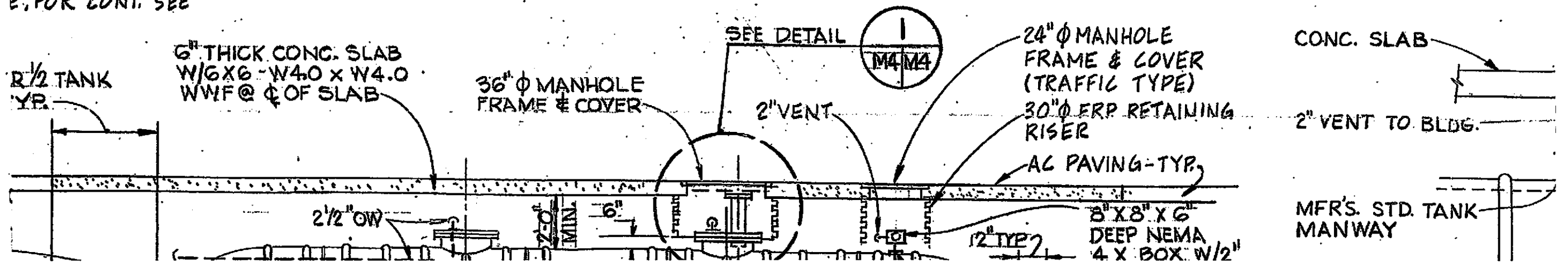
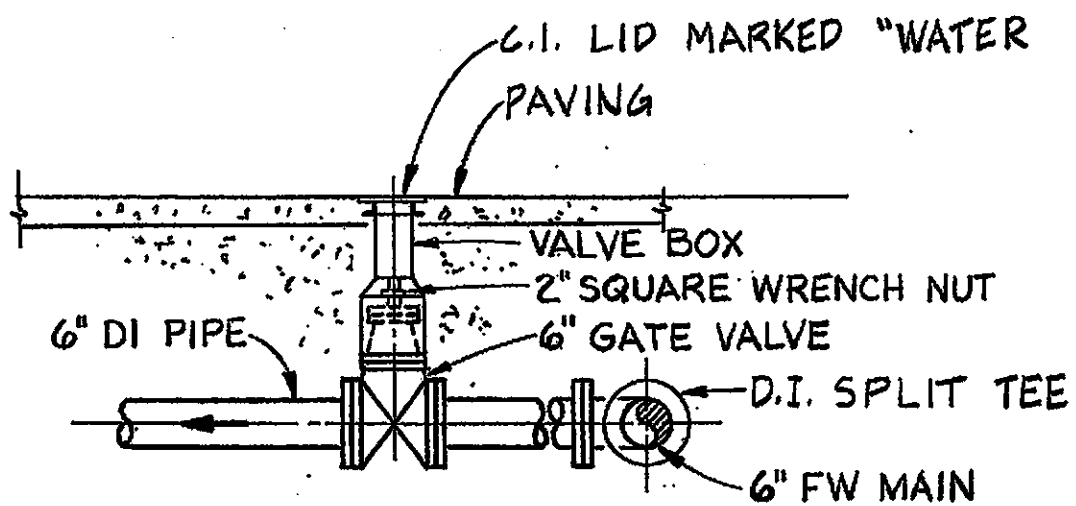
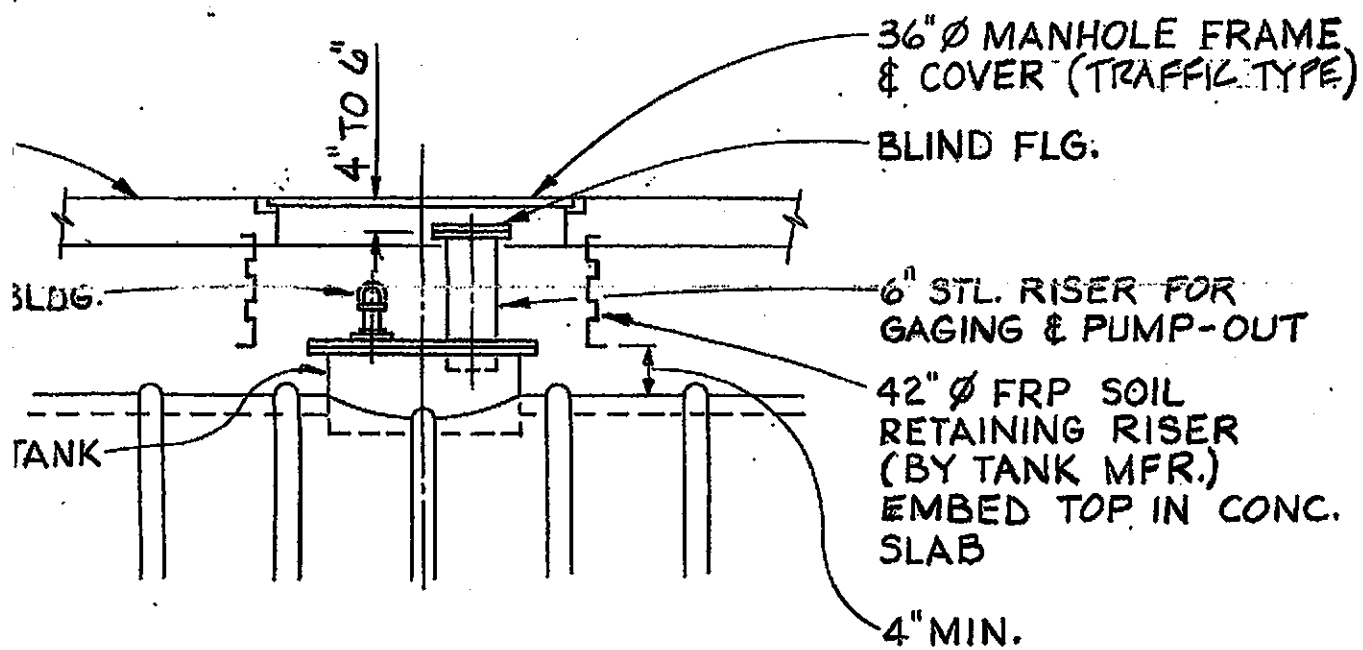


E. FOR CONT. SEE





DETAIL 2  
 $\frac{1}{2}'' = 1'-0''$  MI | M4  
 TYP. 2 PLACES



30.0 FRP RETAINING

# PLAN - BLDG. 44

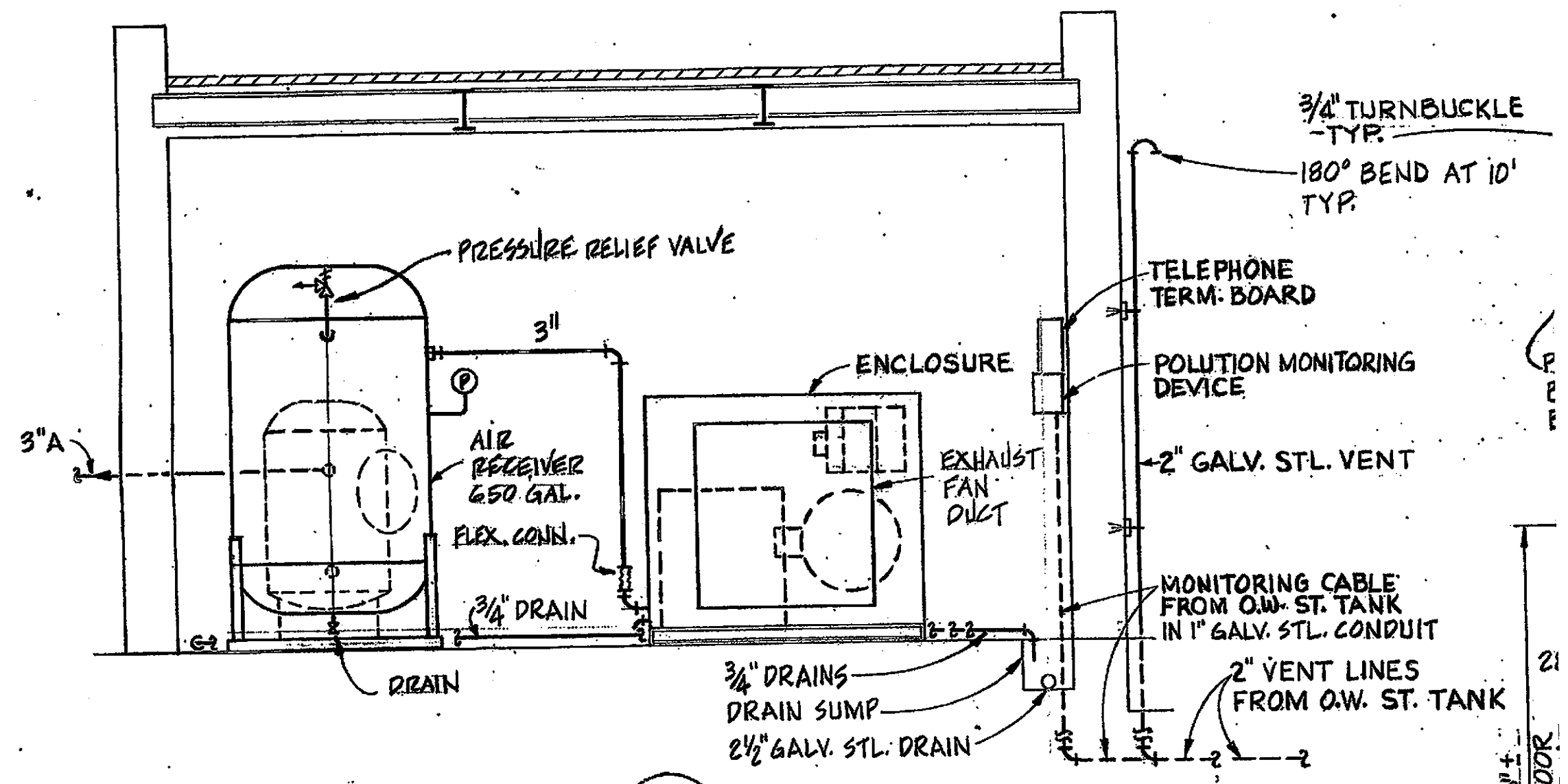
3/8" = 1'-0"

GROUT IN 2 1/2" DRAIN

3/4" DRAINS

EXHAUST DUCT W/BIRDSCREEN

HOLD DOWN STRAP - TYP.



3/4" TURNBUCKLE - TYP.

180° BEND AT 10' TYP.

TELEPHONE TERM. BOARD

POLLUTION MONITORING DEVICE

2" GALV. STL. VENT

MONITORING CABLE FROM O.W. ST. TANK IN 1" GALV. STL. CONDUIT

2" VENT LINES FROM O.W. ST. TANK

PRESSURE RELIEF VALVE

3"

AIR RECEIVER 650 GAL. FLEX. CONN.

3/4" DRAIN

DRAIN

ENCLOSURE

EXHAUST FAN DUCT

3/4" DRAINS DRAIN SUMP

2 1/2" GALV. STL. DRAIN

SECTION B

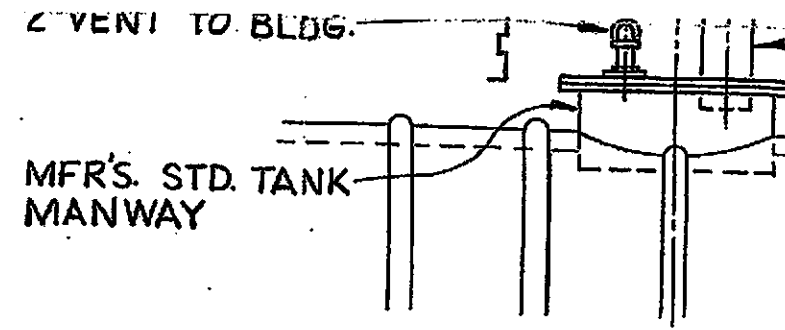
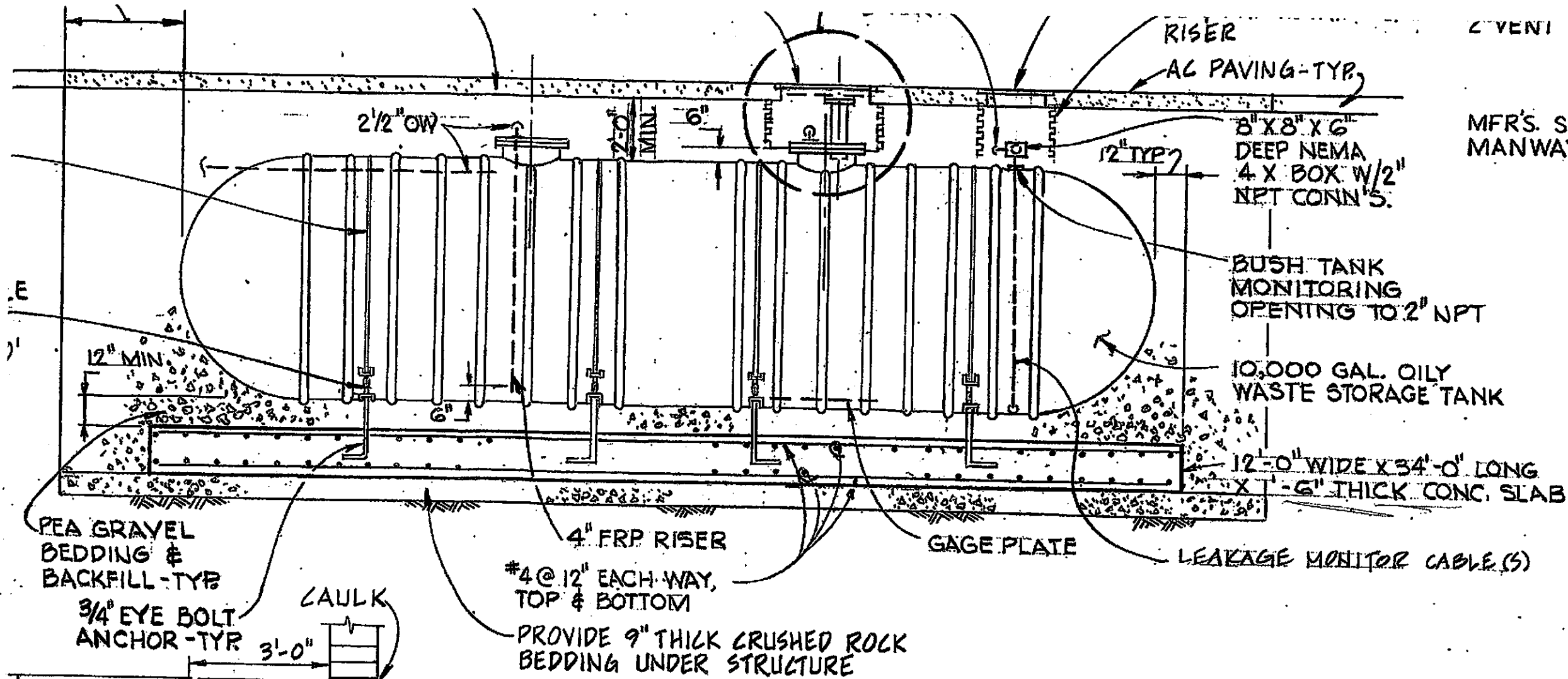
3/8" = 1'-0"

M4 | M4

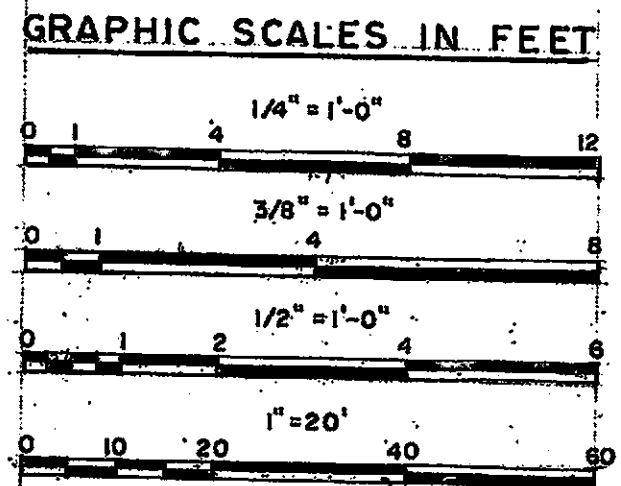
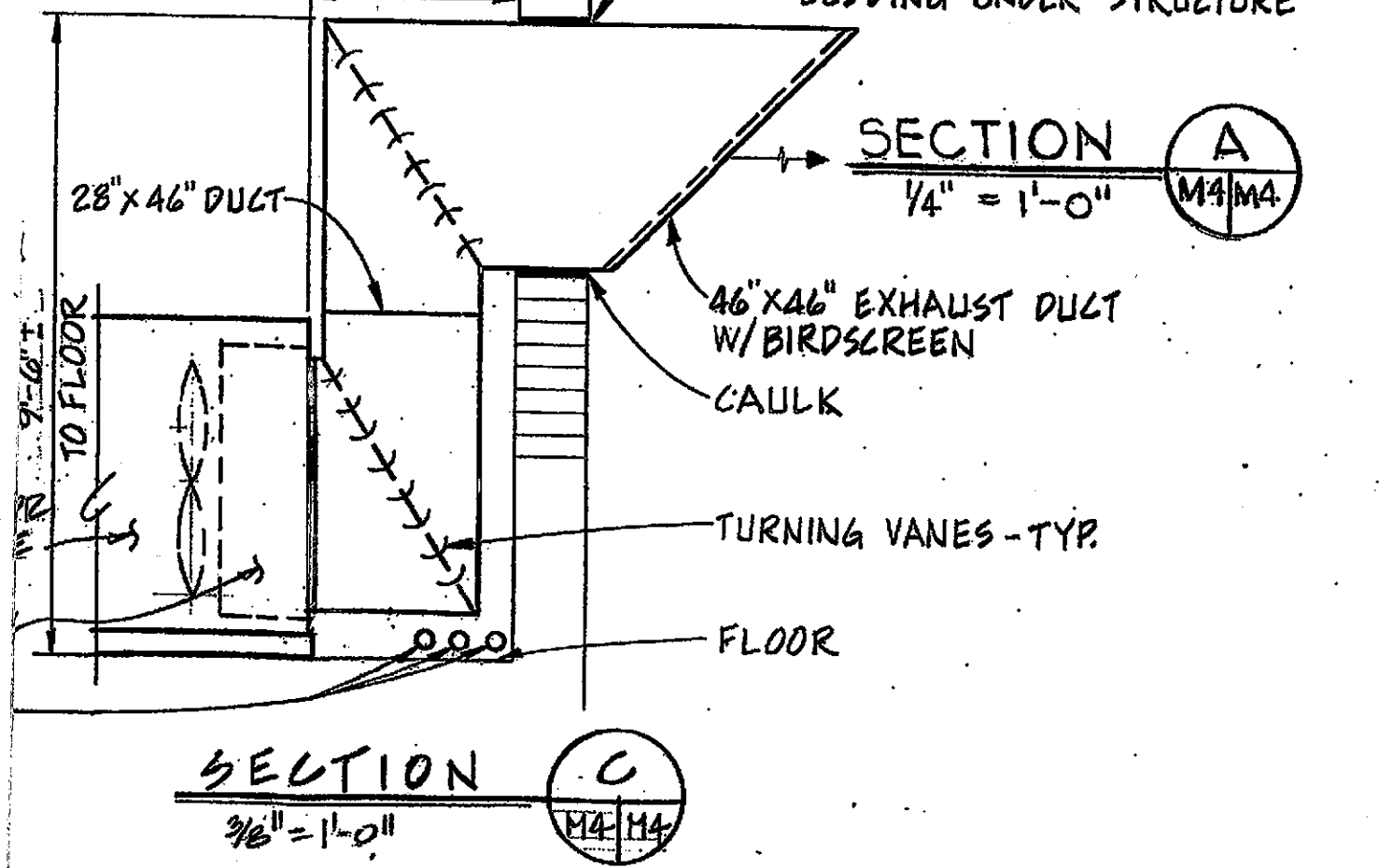
AIR COMPRESSOR ENCLOSURE

AFTER COOLER / OIL COOLER 3/4" DRAINS

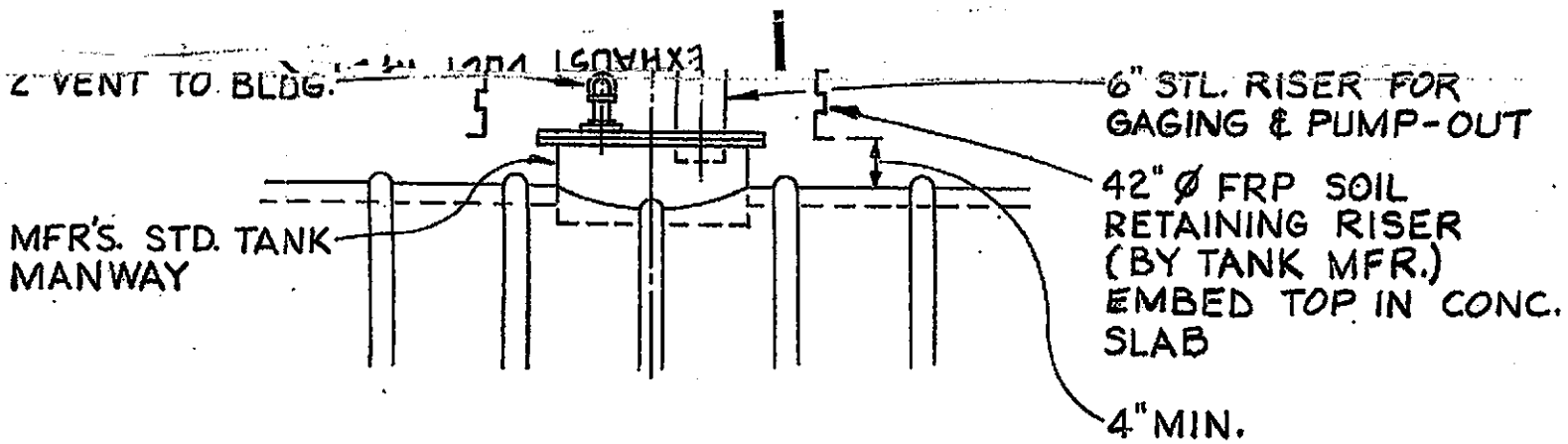
9'-0" ± TO FLOOR



DETAIL  
 1/2" = 1'-0" M4



REV.	DATE	BY	AS-BUILT CONDITIONS
DESIGN FIRM:			
MOFFATT & NICHOL, ENGINEERS LONG BEACH, CALIFORNIA			
U.S. COAST FACILITIES			
U.S. COAST GUARD			
DES. F.S.	DR. GN.	CHK. MR.B.	
SUPVR. JRC	CH. ENGR. JTG		
SUBMITTED BY:			
FIRM MEMBER (TITLE)			
FD & CC (WEST):			
EIC	<i>Jeall John</i>		
RVD	<i>RGT</i>		
<i>Conrad M. Jones</i>			
BRANCH CHIEF			
APPROVED:			
CHIEF, DESIGN SPECIFICATION			
12-85-			
CONST. CONTR			



DETAIL 1  
 1/2" = 1'-0" M4 M4

1/2" NPT

OILY  
 AGE TANK

34'-0" LONG  
 CONC. SLAB

12 CABLE(S)

11  
12  
13  
14  
15  
16  
17  
18  
19  
20  
21  
22  
23  
24  
25  
26  
27  
28  
29  
30  
31  
32  
33  
34  
35  
36  
37  
38  
39  
40  
41  
42  
43  
44  
45  
46  
47  
48  
49  
50

11-2-88		LE	AS-BUILT CONDITIONS SHOWN		
REV.	DATE	BY	DESCRIPTION		APPR.
DESIGN FIRM:			U.S. COAST GUARD SEATTLE, WA.		
MOFFATT & NICHOL, ENGINEERS LONG BEACH, CALIFORNIA			FACILITIES DESIGN & CONSTRUCTION CENTER (WEST)		
DES. ES			U.S. COAST GUARD SUPPORT CENTER ALAMEDA, CALIFORNIA		
DR. GN			SEAWALL & MOORINGS		
CHK. MRB			SHORE PIPING & EQUIPMENT		
SUPVR. JRC			APPROVED: <i>[Signature]</i>		
CH. ENGR. JTG			DATE 10/22/85		
SUBMITTED BY:			SPECIFICATION NO. 12-85-1002		
FIRM MEMBER (TITLE)			DRAWING NUMBER 12-85-1002		
FD & CC (WEST):			CONST. CONTRACT NO. DTCG50-86-C-00064		
EIC <i>[Signature]</i>			SCALE SHOWN		
RVD <i>[Signature]</i>			SHEET 34 OF 54		
BRANCH CHIEF <i>[Signature]</i>			M-4		

ENCLOSURE(2)