



July 25, 2001

Ms. Eva Chu
 Alameda County Environmental Health Division
 1131 Harbor Bay Parkway, 2nd Floor
 Alameda, CA 94502
 via facsimile 510.337.9335

acceptable
 3164 Gold Camp Drive
 Suite 200
 Rancho Cordova, California 95670-6021
 916/638-2085
 FAX: 916/638-8385

Subject: Work Plan to Excavate Hydrocarbon-Impacted Soil at Former Chevron Station #21-0208, 6006 International Boulevard, Oakland, CA.

Ms. Chu:

At the request of Chevron Products Company (Chevron), Delta Environmental Consultants, Inc. Network Associate Gettler-Ryan Inc. (GR) previously proposed to define the extent of hydrocarbon impact at the subject site and excavate impacted soil (GR Report #DG20208C.AC01, *UST Removal Report and Work Plan for Subsurface Investigation*, dated July 2, 2001). This Work Plan was approved in your e-mail dated July 6, 2001. The GeoProbe portion of work has been completed.

A total of 17 GeoProbe borings were advanced at the site to depths up to 10 feet below ground surface. Soil samples were collected from each of the borings at 2.5 feet and 5.5 feet below ground surface (bgs). Grab groundwater samples were collected from seven of the borings. Soil and groundwater samples were analyzed for Total Petroleum Hydrocarbons as gasoline (TPHg), benzene, toluene, ethylbenzene, xylenes (BTEX), methyl tert-butyl ether (MtBE), and lead. Tables summarizing these analytical data are attached.

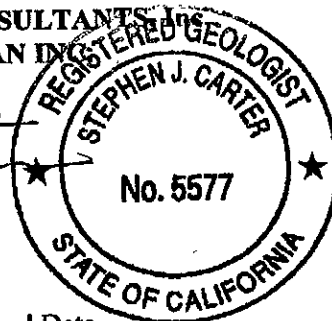
Based on these soil analytical data, GR proposes to excavate impacted soil from the immediate vicinity of the former product line and dispenser island. The proposed lateral extent of the excavation is shown on the attached Figure 1. The excavation will extend vertically to groundwater, which we expect to encounter at approximately 7 feet bgs. Confirming soil samples will be collected from the walls of the excavation, and will be analyzed for TPHg, BTEX, and MtBE.

A diagram of the proposed building footprint is also attached. Please call me at 916.631.1300 if you have questions.

Sincerely,
DELTA ENVIRONMENTAL CONSULTANTS, INC.
 Network Associate GETTLER-RYAN INC.

Stephen J. Carter

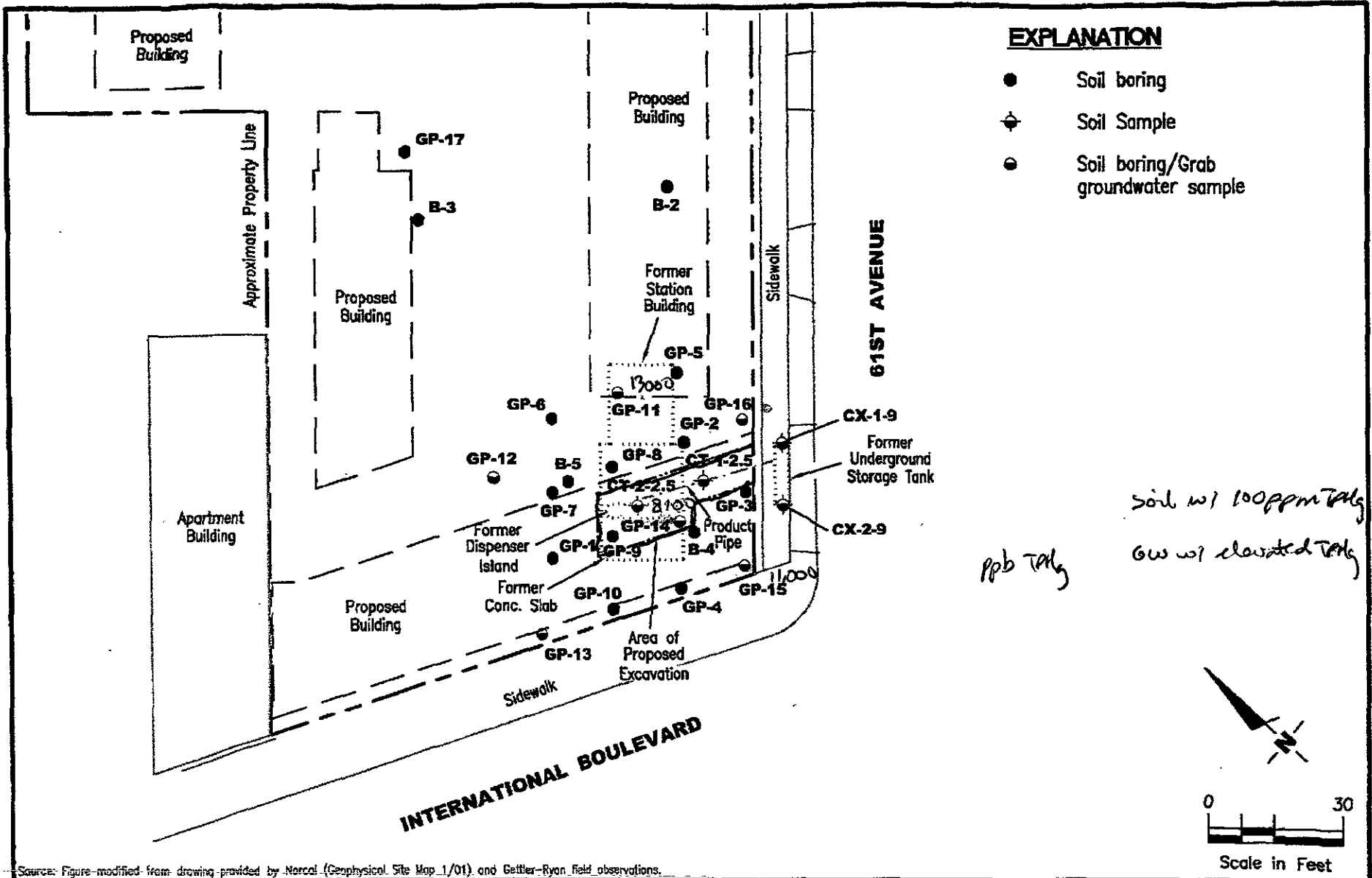
Stephen J. Carter, R.G. 5577
 Senior Geologist



Attachments: Table 1. Soil Analytical Data
 Table 2. Grab Groundwater Analytical Data
 Figure 1. Site Plan
 Sheet A1. Site Plan (Pyatok Associates)

Providing a Competitive Edge

cc: Mr. Tom Bauhs, Chevron Products company, P.O. Box 6004, San Ramon, CA 94583
 Mr. Jim Brownell, Delta Environmental Consultants, Inc., 3164 Gold Camp Drive, Suite 200,
 Rancho Cordova, CA 95670
 Mr. James Coles, Resources for Community Development, 2131 University Avenue, Suite 94704,
 Berkeley, CA 94704



Source: Figure modified from drawing provided by Norcal (Geophysical Site Map 1/01) and Gettler-Ryan field observations.

GETTLER - RYAN INC.
 6747 Sierra Ct., Suite J
 Dublin, CA 94568 (925) 551-7555

SOIL BORING LOCATION MAP
 Former Chevron Service Station No. 21-0208
 6006 International Boulevard
 Oakland, California

FIGURE 1

PROJECT NUMBER DG20208G.4C01	REVIEWED BY	DATE 7/01	REVISED DATE
---------------------------------	-------------	--------------	--------------

TABLE 1. SOIL ANALYTICAL DATA

Former Chevron Station #21-0208

6006 International Boulevard

Oakland, California

Sample ID	Date	Depth (feet)	TPHg (ppm)	Benzene (ppm)	Toluene (ppm)	Ethylbenzene (ppm)	Xylenes (ppm)	MTBE (ppm)	Lead (ppm)
GeoProbe Borings									
GP1-2.5	7/17/2001	2.5	<1.0	<0.0050	<0.0050	<0.0050	<0.0050	<0.050	<6.1
GP1-5.5	7/17/2001	5.5	<1.0	<0.0050	<0.0050	<0.0050	<0.0050	<0.050	<6.2
GP2-2.5	7/17/2001	2.5	<1.0	<0.0050	<0.0050	<0.0050	<0.0050	0.43	<5.4
GP2-5.5	7/17/2001	5.5	110	<0.25	<0.25	<0.25	0.40	<2.5	7.6
GP3-2.5	7/17/2001	2.5	<1.0	<0.0050	<0.0050	<0.0050	<0.0050	<0.050	5.4
GP3-5.5	7/17/2001	5.5	1.1	<0.0050	<0.0050	<0.0050	<0.0050	<0.050	<5.7
GP4-2.5	7/17/2001	2.5	<1.0	<0.0050	<0.0050	<0.0050	<0.0050	<0.050	<6.5
GP4-5.5	7/17/2001	5.5	<1.0	<0.0050	<0.0050	<0.0050	<0.0050	<0.050	<7.1
GP5-2.5	7/17/2001	2.5	<1.0	<0.0050	<0.0050	<0.0050	<0.0050	<0.050	<6.5
GP5-5.5	7/17/2001	5.5	<1.0	<0.0050	<0.0050	<0.0050	<0.0050	<0.050	<6.8
GP6-2.5	7/17/2001	2.5	<1.0	<0.0050	<0.0050	<0.0050	<0.0050	<0.050	18
GP6-5.5	7/17/2001	5.5	<1.0	<0.0050	<0.0050	<0.0050	<0.0050	<0.050	<5.7
GP7-2.5	7/17/2001	2.5	<1.0	<0.0050	<0.0050	<0.0050	<0.0050	<0.050	<6.2
GP7-5.5	7/17/2001	5.5	3.4	<0.0050	<0.0050	<0.0050	0.0073	<0.050	<6.4
GP8-2.5	7/17/2001	2.5	<1.0	<0.0050	<0.0050	<0.0050	<0.0050	<0.050	<5.6
GP8-5.5	7/17/2001	5.5	1.5	<0.0050	<0.0050	<0.0050	<0.0050	<0.050	<5.8
GP9-2.5	7/17/2001	2.5	23	<0.025	<0.025	0.11	0.056	<0.25	11
GP9-5.5	7/17/2001	5.5	150	<0.25	<0.25	<0.25	0.53	<2.5	<6.0
GP10-2.5	7/17/2001	2.5	<1.0	<0.0050	<0.0050	<0.0050	<0.0050	<0.050	7.5
GP10-5.5	7/17/2001	5.5	<1.0	<0.0050	<0.0050	<0.0050	<0.0050	<0.050	<5.7
GP11-2.5	7/17/2001	2.5	<1.0	<0.0050	<0.0050	<0.0050	<0.0050	<0.050	<5.8
GP11-5.5	7/17/2001	5.5	<1.0	<0.0050	<0.0050	<0.0050	<0.0050	<0.050	<5.9
GP12-2.5	7/17/2001	2.5	<1.0	<0.0050	<0.0050	<0.0050	<0.0050	<0.050	<6.6
GP12-5.5	7/17/2001	5.5	<1.0	<0.0050	<0.0050	<0.0050	<0.0050	<0.050	7.6
GP13-2.5	7/17/2001	2.5	<1.0	<0.0050	<0.0050	<0.0050	<0.0050	<0.050	<5.7
GP13-5.5	7/17/2001	5.5	<1.0	<0.0050	<0.0050	<0.0050	<0.0050	<0.050	<5.7
GP14-2.5	7/18/2001	2.5	130	<0.25	<0.25	0.99	0.66	<2.5	<6.6
GP14-5.5	7/18/2001	5.5	150	<0.25	<0.25	<0.25	0.48	<2.5	<6.5
GP15-2.5	7/18/2001	2.5	<1.0	<0.0050	<0.0050	<0.0050	<0.0050	0.13	<6.4
GP15-5.5	7/18/2001	5.5	<1.0	<0.0050	<0.0050	<0.0050	<0.0050	<0.050	<7.2

TABLE 1. SOIL ANALYTICAL DATA
 Former Chevron Station #21-0208
 6006 International Boulevard
 Oakland, California

Sample ID	Date	Depth (feet)	TPHg (ppm)	Benzene (ppm)	Toluene (ppm)	Ethylbenzene (ppm)	Xylenes (ppm)	MTBE (ppm)	Lead (ppm)
GP16-2.5	7/18/2001	2.5	<1.0	<0.0050	<0.0050	<0.0050	<0.0050	<0.050	<6.6
GP-16-5.5	7/18/2001	5.5	<1.0	<0.0050	<0.0050	<0.0050	<0.0050	<0.050	<6.5
GP17-2.5	7/18/2001	2.5	<1.0	<0.0050	<0.0050	<0.0050	<0.0050	<0.050	<7.4
GP17-5.5	7/18/2001	5.5	<1.0	<0.0050	<0.0050	<0.0050	<0.0050	<0.050	<7.1
Composite Samples									
EH0-3	7/18/2001	----	2.5	<0.0050	<0.0050	0.015	0.013	<0.050	<6.9
EH3-6	7/18/2001	----	2.4	<0.0050	<0.0050	0.0054	0.0072	<0.050	<6.4
WH0-3	7/17/2001	----	5.0	<0.025	<0.025	<0.025	<0.025	<0.25	<6.7
WH3-6	7/17/2001	----	4.0	<0.0050	<0.0050	0.0093	0.011	<0.050	<7.2

Explanation:

TPHg = Total Petroleum Hydrocarbons as gasoline
 BTEX = benzene, toluene, ethylbenzene and xylenes
 MTBE = methyl tert-butyl ether
 ppm = parts per million
 ---- = not applicable

Analytical Methods:

TPHG/BTEX/MTBE: EPA Methods/8020M
 Lead: EPA Method 6010

Analytical Laboratory:

Sequoia Analytical (ELAP #2374)

TABLE 2. GRAB GROUNDWATER ANALYTICAL DATA

Former Chevron Station #21-0208

6006 International Boulevard

Oakland, California

Sample ID	Date	TPHg (ppb)	Benzene (ppb)	Toluene (ppb)	Ethylbenzene (ppb)	Xylenes (ppb)	MTBE (ppb)	Dissolved Lead (ppb)
GP11-W	7/17/01	13,000	28	<10	110	57	<50	<75
GP12-W	7/17/01	64	<0.50	<0.50	<0.50	<0.50	<0.50	<75
GP13-W	7/18/01	57	<0.50	<0.50	<0.50	<0.50	<0.50	<75
GP14-W	7/18/01	8,100	100	<2.5	180	24	140	<75
GP15-W	7/18/01	11,000	<25	<25	43	48	<120	<75
GP16-W	7/18/01	970	<0.50	<0.50	4.7	6.0	<2.5	<75
GP17-W	7/18/01	<50	<0.50	<0.50	<0.50	<0.50	<2.5	<75

Explanation:

TPHg = Total Petroleum Hydrocarbons as gasoline

BTEX = benzene, toluene, ethylbenzene and xylenes

MTBE = methyl tert-butyl ether

ppb = parts per billion

Analytical Methods:

TPHG/BTEX/MTBE: EPA Methods 8015m/8020M

Lead: EPA Method 6010

Analytical Laboratory:

Sequoia Analytical (ELAP #2374)

3140 Gold Camp Drive
Suite 170
Rancho Cordova, CA 95670
916.631.1300 - voice 916.631.1317 - fax

Gettler-Ryan Inc.

Fax

To: Eva Chu **From:** Steve Carter

Fax: 510.337.9335 **Pages:** 78

Phone: **Date:** 07/25/01

Re: Chevron #21-0208, Oakland **CC:**

Urgent For Review Please Comment Please Reply Please Recycle

Attached is a letter work pan for excavation of impacted soil at the subject site. Soil and groundwater analytical data for the recent GeoProbe work is also attached. The building footprint is indicated on the GR Site Plan, and a reduced copy of the architect's drawing is also attached. The Architect indicates that the building will be constructed with a 4" slab on grade foundation with a 10 ml vapor barrier. After you have a chance to review our excavation proposal, please call me at 916.631.1300 with questions.

Steve Carter



Project: Project #414
Title: 1st Floor
Location: CA 94612
City: 465-7018
Fax: (510) 465-8379

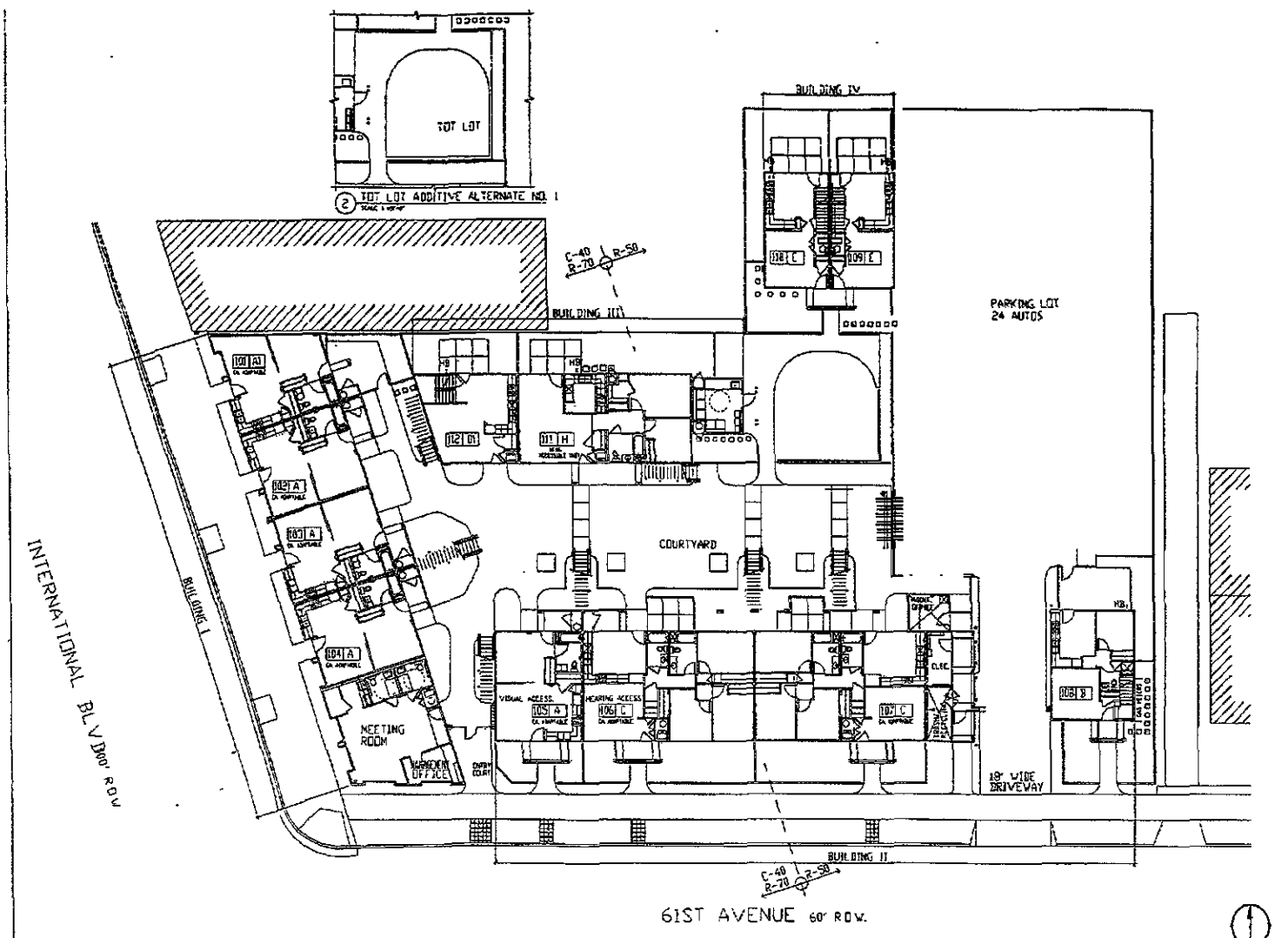
INTERNATIONAL BOULEVARD
SITES
INTERNATIONAL BLVD, OAKLAND,
CA

RESOURCES FOR COMMUNITY DEVELOPMENT
EAST OAKLAND COMMUNITY DEVELOPMENT CORPORATION

SITE PLAN

REVISIONS
NO. DATE
BY
CHECKED BY

SCALE
1" = 1'-0"
SHEET
A1.1
OF 2 SHEETS



INTERNATIONAL BLVD 60' RDW

61ST AVENUE 60' RDW

PARKING LOT
24 AUTOS

18' WIDE
DRIVEWAY

1 SITE PLAN

