

HARSCH
INVESTMENT CORP.

ENVIRONMENTAL
PROTECTION

98 JUN -3 PM 3:07

June 2, 1998

Mr. Larry Seto
Sr. Hazardous Materials Specialist
Environmental Health Services
Environmental Protection
1131 Harbor Bay Parkway, Suite 250
Alameda, CA 94502-6577

RE: Former Shell Site, 2160 Otis Drive, Alameda, CA

Dear Larry:

Pursuant to our meeting of May 7, 1998, enclosed is a copy of the site plan showing the proposed OfficeMax with an overlay of the former Shell Station, including tank locations and future well locations. It is my understanding pursuant to that meeting, upon receipt of this information, I will get a release letter from Environmental Health Services releasing this site for construction of this proposed commercial development. In that this is the final document that will be necessary in order to obtain lease execution, anything that you can do to expedite such letter would be greatly appreciated.

Should you require any further information, please feel free to contact me.

Yours truly,

HARSCH INVESTMENT CORP.



Michael Dosen
Vice President
Bay Area Shopping Centers

MD/krk

Enclosure

cc: Paul Waite, Cambria Environmental Technology, Inc.
A.E. (Alex) Perez, Shell Oil Products Company
Greg Baum, Harsch Investment Corp. In-House Counsel

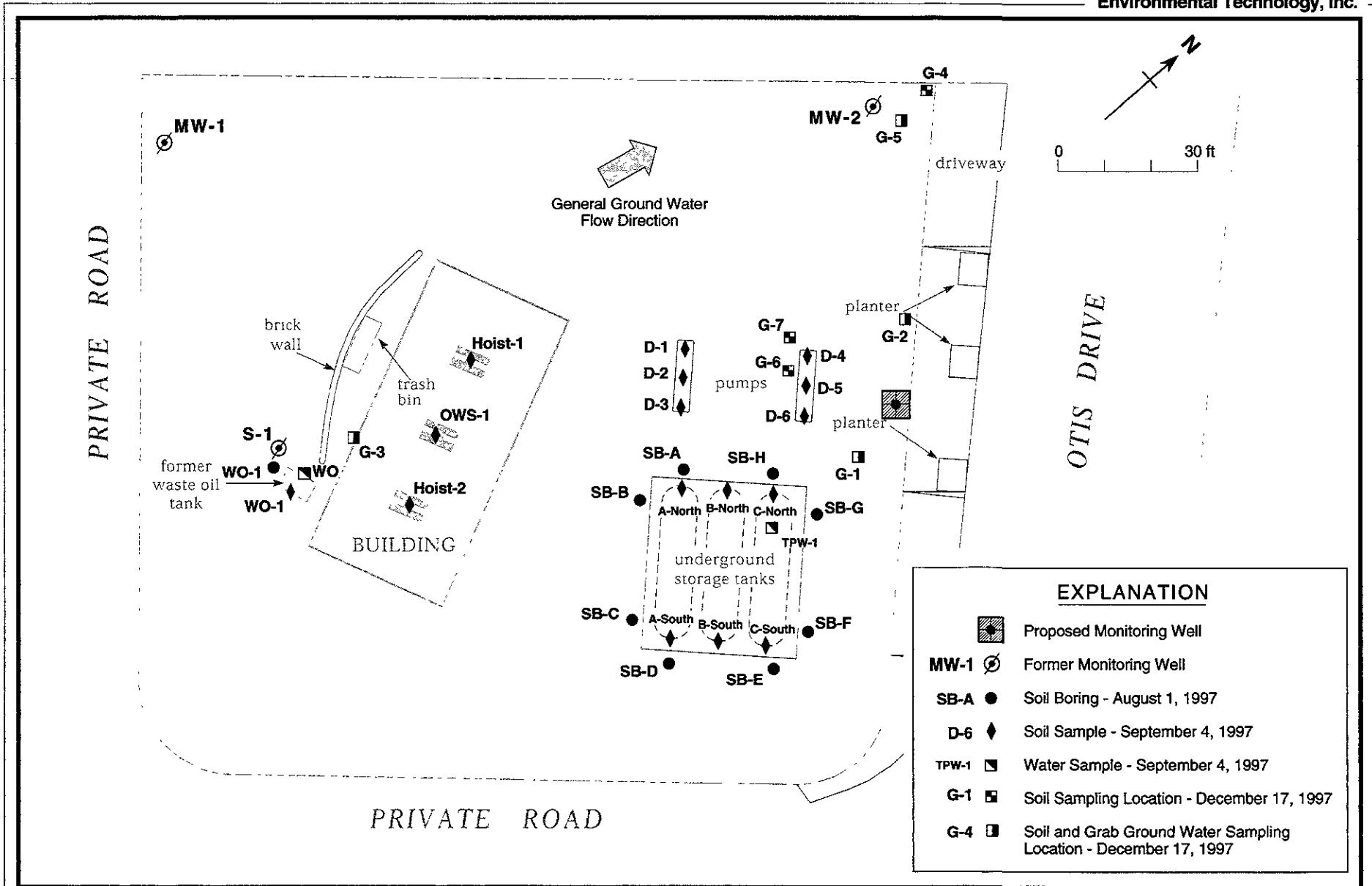
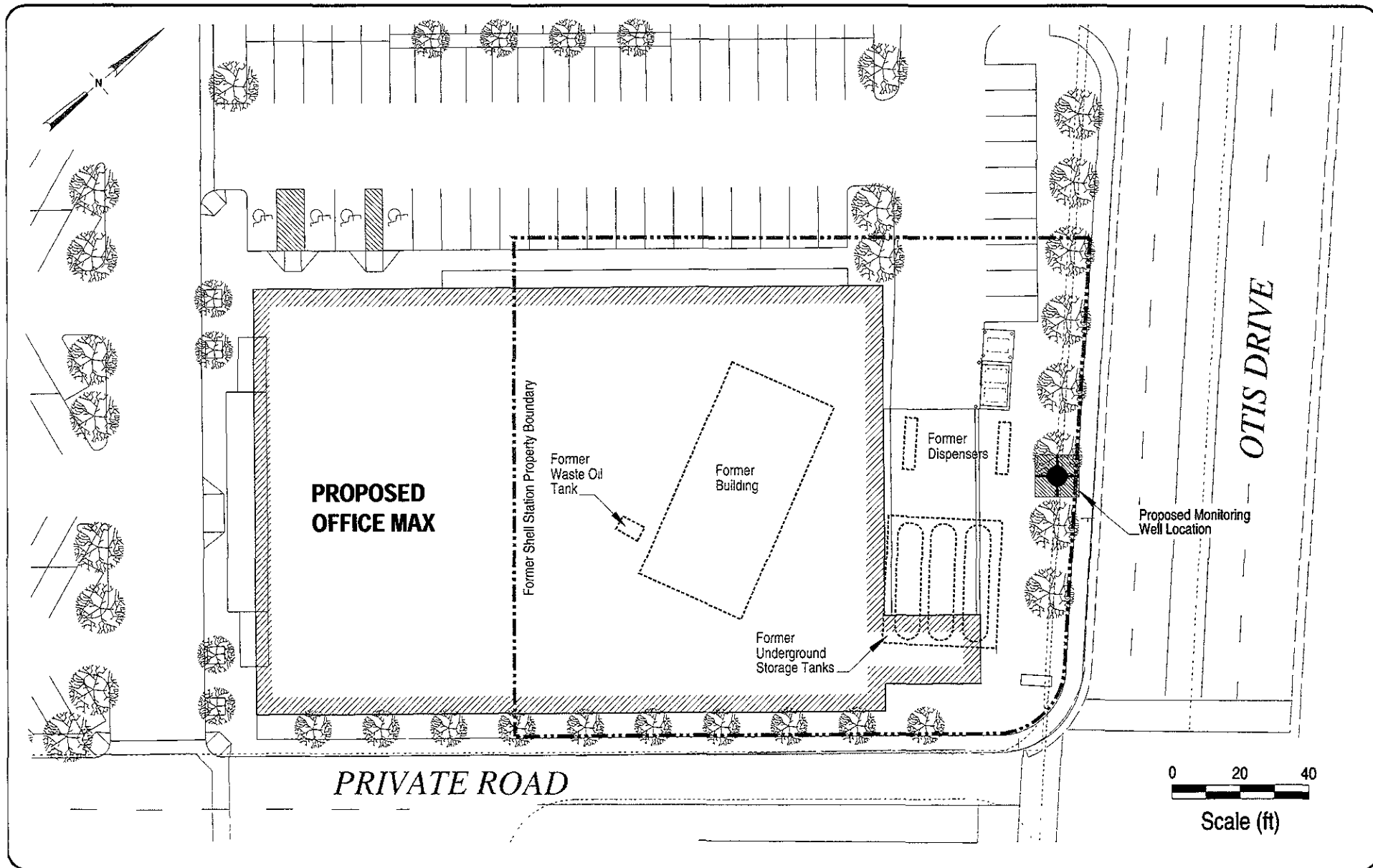


Figure 1. Proposed Monitoring Well Location - Shell Service Station WIC #204-0072-0502, 2160 Otis Drive, Alameda, California



CAMBRIA
Environmental Technology, Inc.

Proposed Office Max Development
2160 Otis Avenue
Alameda, California

Site Plan

FIGURE

2

G:\ALA2160\FIGURES\OVERLAY2.DWG