

GRIBI Associates

Geological and Environmental Consulting Services

FACSIMILE TRANSMITTAL

Date: SEPTEMBER 15, 1999

To: Eva Chu
ALAMEDA COUNTY
ENVIRONMENTAL HEALTH

Fax No.: (510)337-9335

From: JIM GRIBI
Phone: (707)748-7743
Fax: (707)748-7763

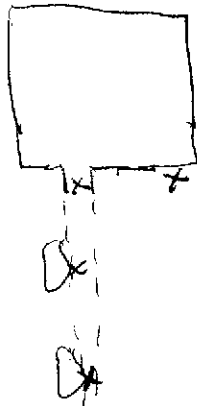
Number of pages, including this transmittal page: 8

Eva,

Please see attached lab results and site plan for Corwood Car Wash site in Dublin.

Thanks!

- collect SS from NE wall @ ~4-5' by 5' (stained soil)
- collect SS from trench
- collect SS in front of each dispenser



- collect grab water sample from pit after purged + recharged
- remove badful sand material w pit.



Acculabs Inc.

Davis

Sample Log 21016

MTBE (Methyl-t-butyl ether) By EPA Method 8020/802

From : CORWOOD CW
 Sampled : 01/31/00
 Received : 01/31/00
 Matrix : Soil

SAMPLE	Date Analyzed	(MRL) $\mu\text{g}/\text{kg}$	Measured Value $\mu\text{g}/\text{kg}$
T-1W (13 FT)	01/31/00	(.050)	<.050
T-2E (13 FT)	02/01/00	(.050)	.17
T-2W (14 FT)	02/01/00	(.050)	.17
SP-1.1,1.2,1.3,1.4	02/01/00	(.15)	<.15
SP-2.1,2.2,2.3,2.4	02/01/00	(.25)	<.25

Approved By:


 Tom Kupa
 Lab Director



Acculabs Inc.

Davis

Sample Log 21016

91016-03

Sample: T-1W (13 FT)

From : CORWOOD CW

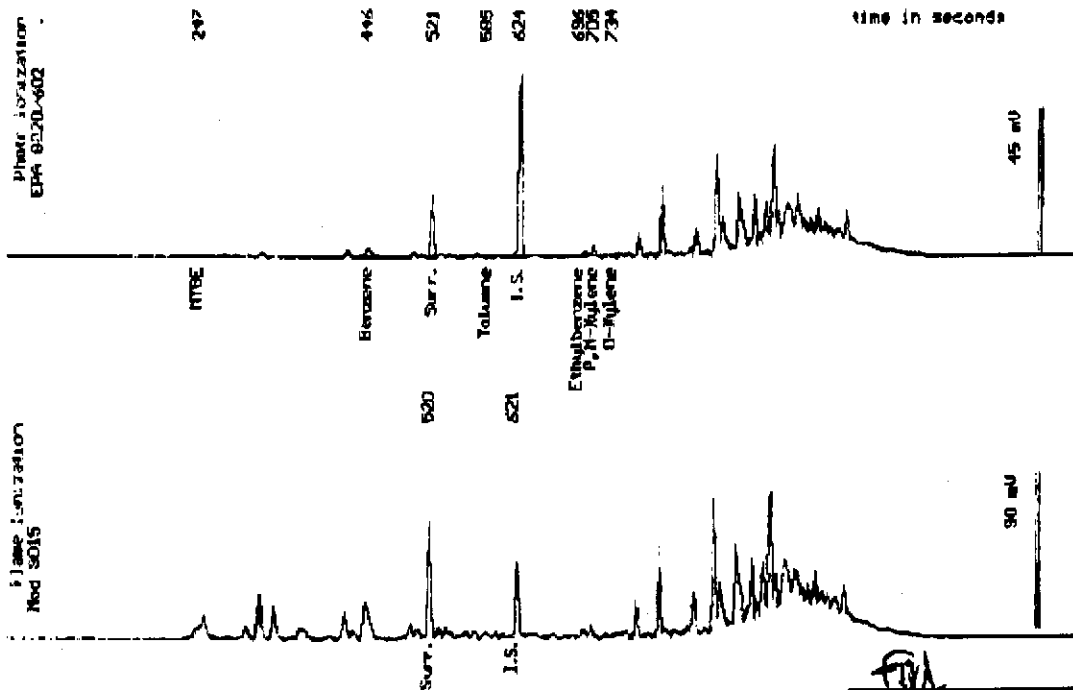
Sampled : 01/31/00

Dilution : 1:1

Matrix : Soil

Run Log : 2187F

Parameter	(MRL) mg/kg	Measured Value mg/kg
Benzene	(.0050)	.012
Toluene	(.0050)	<.0050
Ethylbenzene	(.0050)	<.0050
Total Xylenes	(.0050)	.0092
TPH as Gasoline	(1.0)	2.1
Surrogate Recovery		101 %
* Product is not typical gasoline.		



Date Analyzed: 01-31-00
Column: 0.53mm X 60m Restek Rtx-1301

Stewart Rodolfsky
Senior Chemist



Acculabs Inc.

Davis

Sample Log 21016

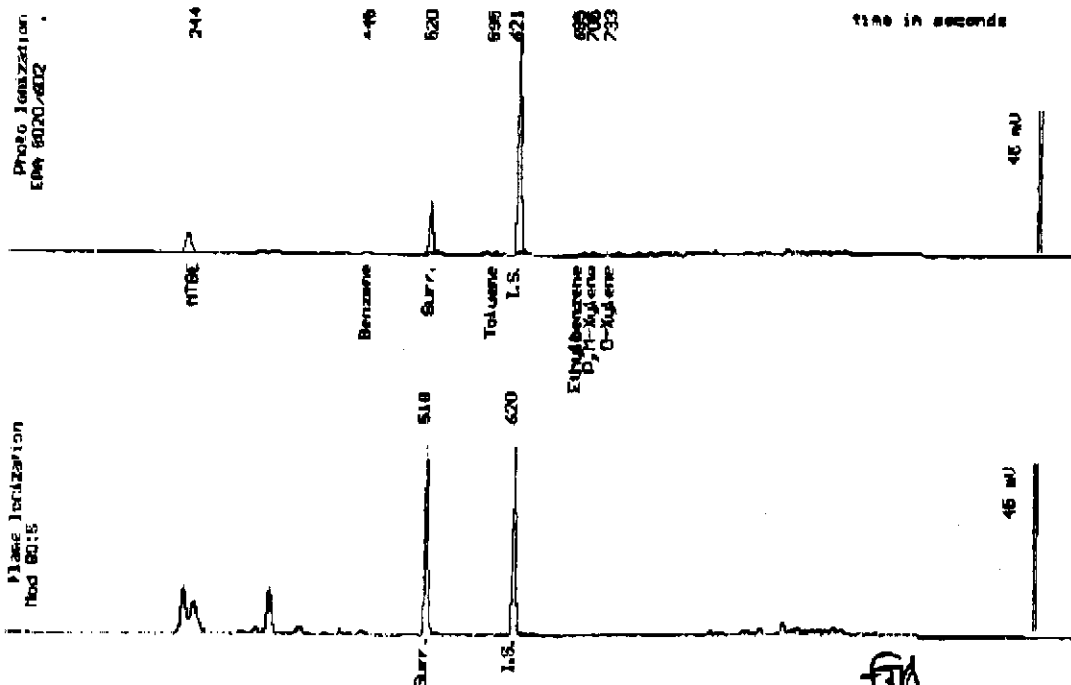
21016-03

Sample: T-2E (13 FT)

From : CORWOOD CW
 Sampled : 01/31/00
 Dilution : 1:1
 Matrix : Soil

Run Log : 2187F

Parameter	(MRL) <small>mg/kg</small>	Measured Value <small>mg/kg</small>
Benzene	(.0050)	<.0050
Toluene	(.0050)	<.0050
Ethylbenzene	(.0050)	<.0050
Total Xylenes	(.0050)	<.0050
TPH as Gasoline	(1.0)	<1.0
Surrogate Recovery		99 %



Date Analyzed: 02-01-00
 Column: 1 D.53mm X 60m Restek Rtx-1301

SA
 Stevan Sedoljky
 Senior Chemist



Acculabs Inc.

Davis

Sample Log 21016

21016-04

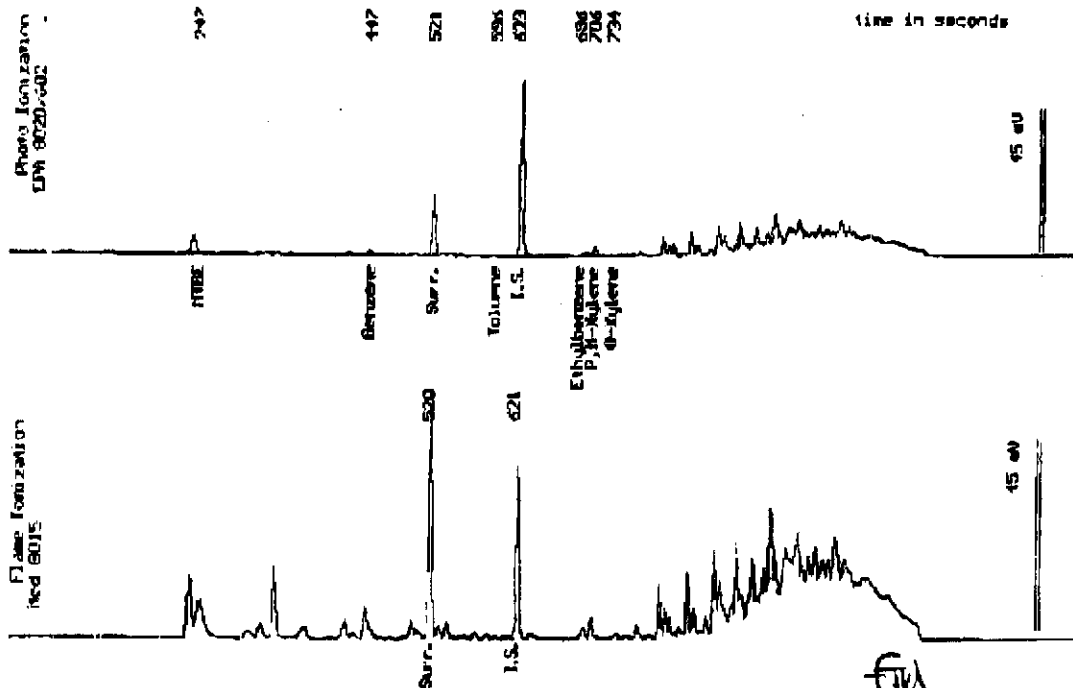
Sample: T-2W (14 FT)

From : CORWOOD CW
 Sampled : 01/31/00
 Dilution : 1:1
 Matrix : Soil

Run Log : 2187F

Parameter	(MRL) $\mu\text{g}/\text{kg}$	Measured Value $\mu\text{g}/\text{kg}$
Benzene	(.0050)	<.0050
Toluene	(.0050)	<.0050
Ethylbenzene	(.0050)	<.0050
Total Xylenes	(.0050)	.0079
TPH as Gasoline	(1.0)	1.3
Surrogate Recovery		99 %

* Product is not typical gasoline.



Date Analyzed: 02-01-00
 Column: N.ORM X 40m Restek Rtx-1301

Stewart Podolsky
 Senior Analyst



Acculabs Inc.

Davis

Sample Log 21016

21016-08

Sample: SP-1.1,1.2,1.3,1.4

From : CORWOOD CW
 Sampled : 01/31/00
 Dilution : 1:3
 Matrix : Soil

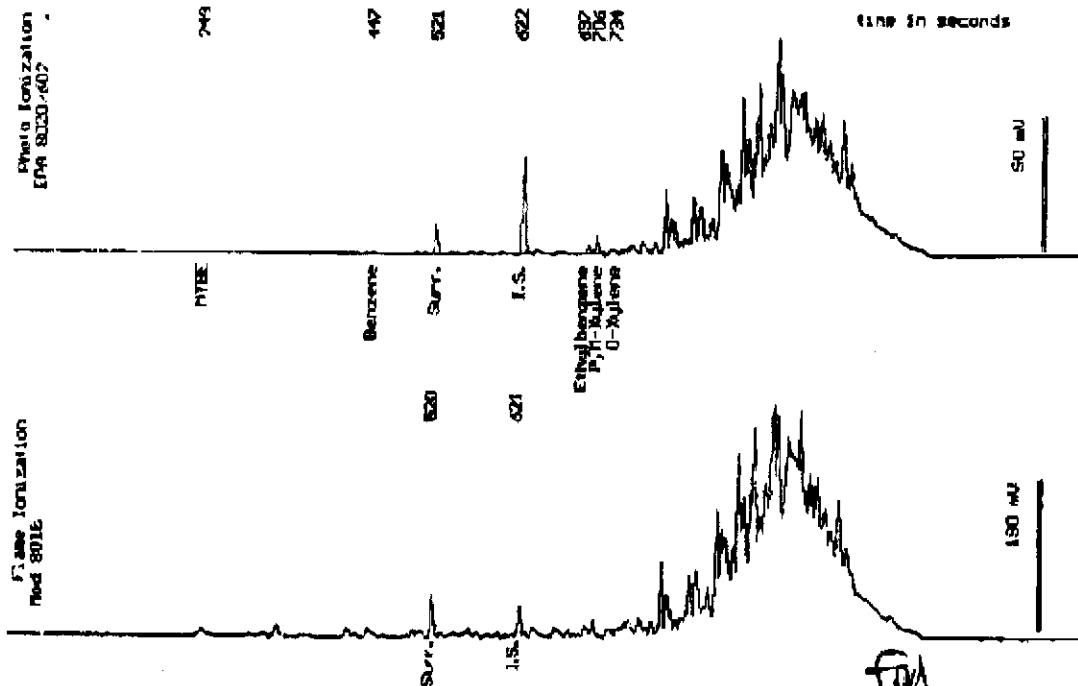
Run Log : 2187F

Parameter	(MRL) $\mu\text{g}/\text{kg}$	Measured Value $\mu\text{g}/\text{kg}$
Benzene	(.015)	.022
Toluene	(.015)	<.015
Ethylbenzene	(.015)	.085
Total Xylenes	(.015)	.20
TPH as Gasoline	(3.0)	84 E

Surrogate Recovery

102 %

E = Value exceeds calibration range. Not typical gasoline product.



Date Analyzed: 02-01-00
 Column: 0.62mm X 50m Restek Rtx-1301

Steven Lindolite
 Senior Chemist



Acculabs Inc.

Davis

Sample Log 21016

AL036-06

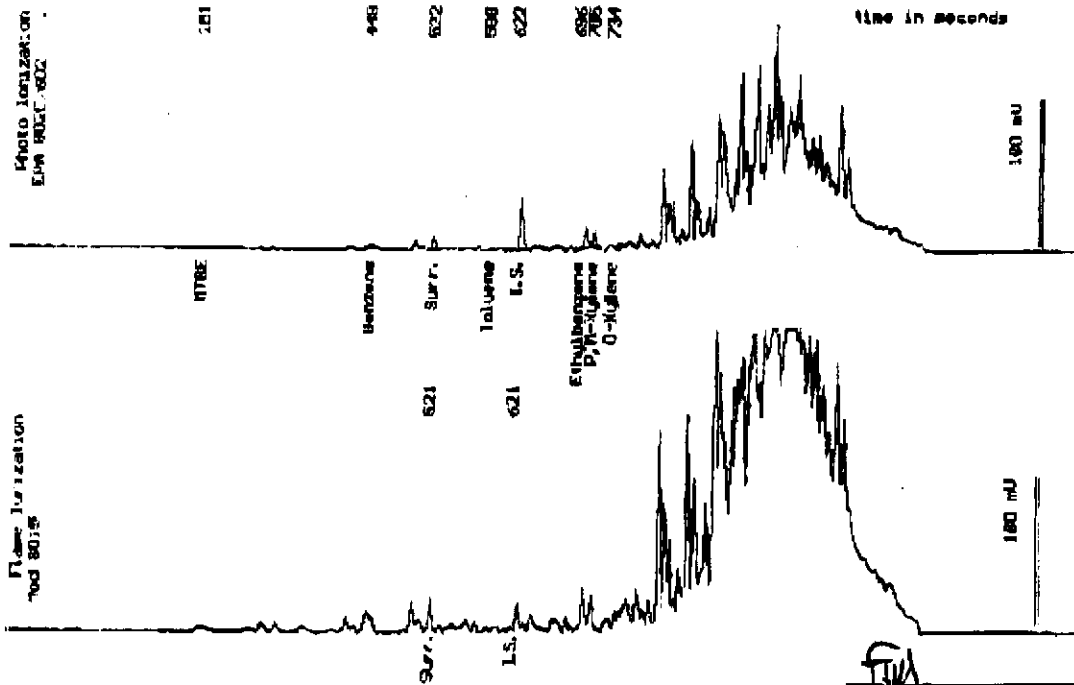
Sample: SP-2.1,2.2,2.3,2.4

From : CORWOOD CW
Sampled : 01/31/00
Dilution : 1:5
Matrix : Soil

Run Log : 2187F

Parameter	(MRL) <small>ug/kg</small>	Measured Value <small>ug/kg</small>
Benzene	(.025)	.055
Toluene	(.025)	.041
Ethylbenzene	(.025)	.76
Total Xylenes	(.025)	.66
TPH as Gasoline	(5.0)	270 E
Surrogate Recovery		109 ‡

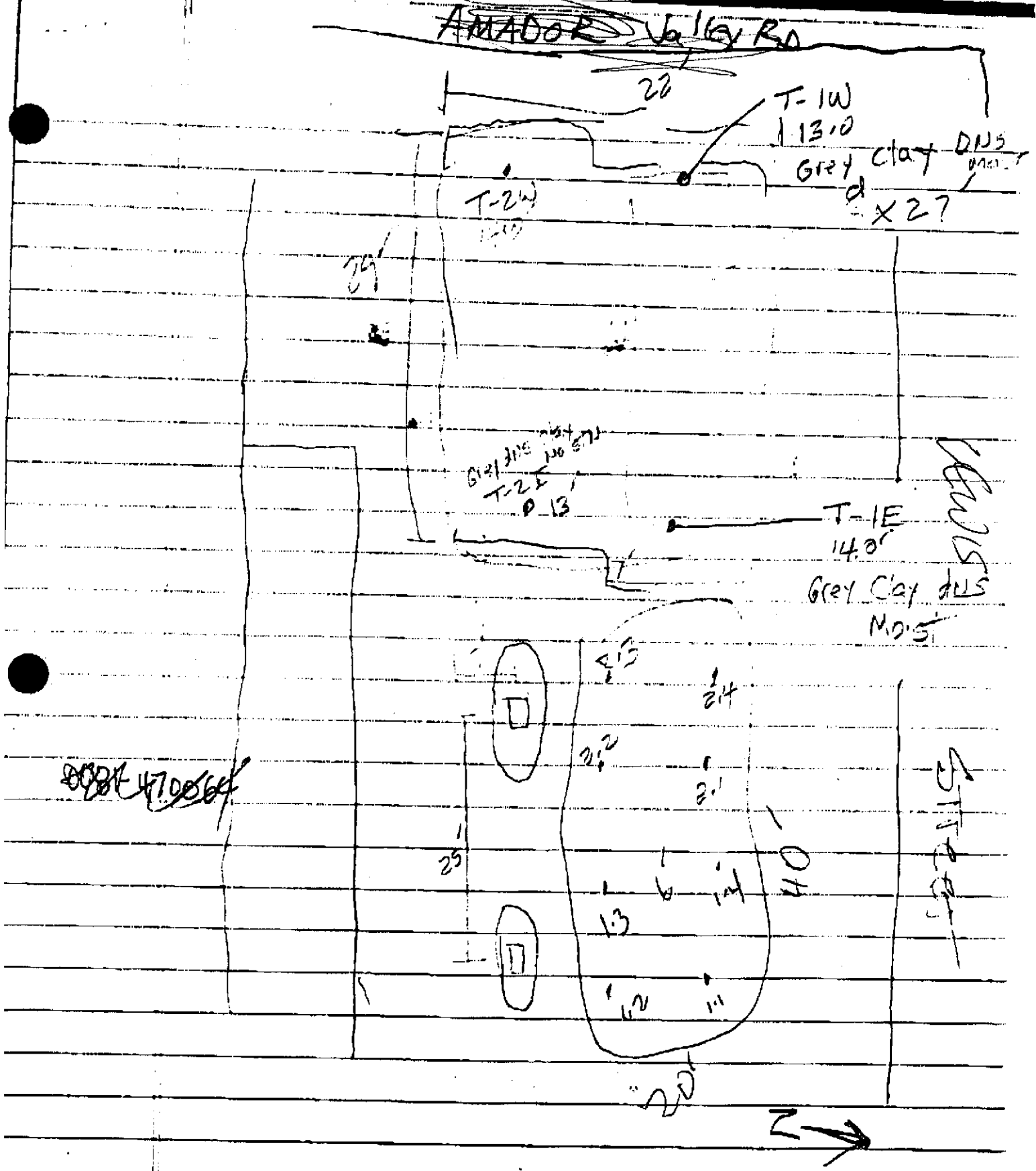
E = Value exceeds calibration range. Not typical gasoline product.



Date Analyzed: 02-01-00
Column: 0.53mm X 60m Restek Rtx-1301

Stewart Podolsky
Senior Chemist

AMADOR Valley Rd



T-1W

13.0

Grey clay dms

Moist

X 27

T-2W

13.0

Grey clay dms
T-2E
13

T-1E

14.0

Grey Clay dms

Moist

470066

470066

470066

