

180'-0"

N 01d 13'02" E
327.68'

S 01d 13'02" W
263.22'

25'-0"
DRIVEWAY

25'-0"
BACKUP

20'-0"
FRONT SETBACK

15'-0"
SIDE SETBACK

18'-0"

8'-0" TR. (C)

5'-0"

S 45d 32'46" W
46.07'

00.84'

S 00d 40'50" E

N 88d 46'58" W
133.47'

DUBLIN BLVD.

ALT
NG

SIDEWALK

PLANTING AREA

PROPOSED
SIGNMENT SIGN

SCARLETT DRIVE

CHABOT CANAL

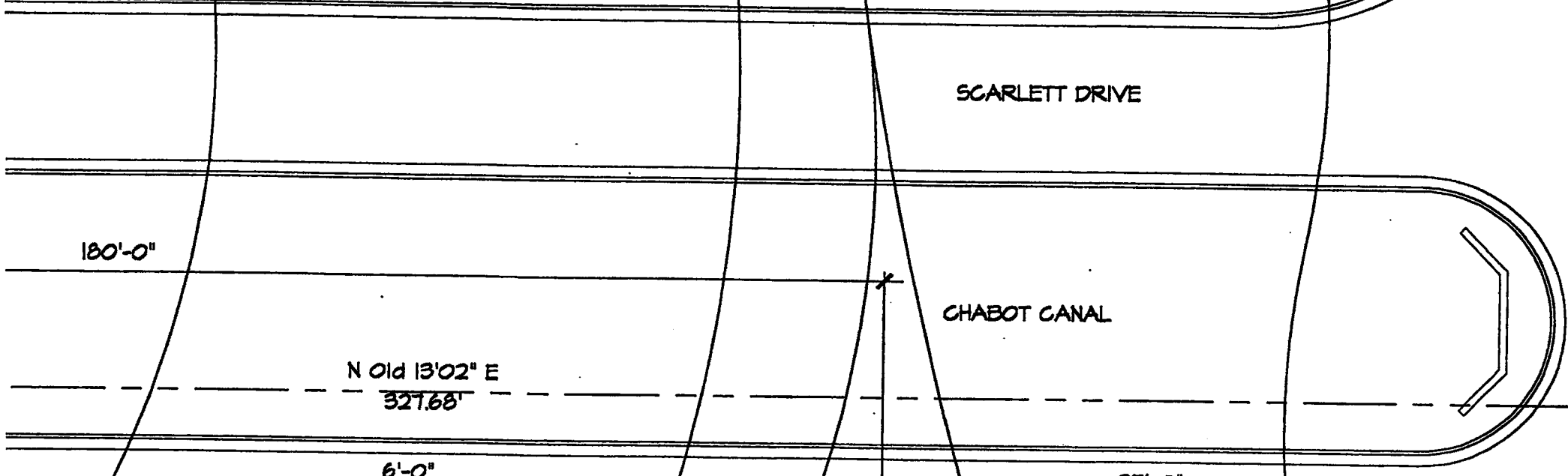
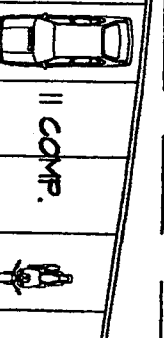
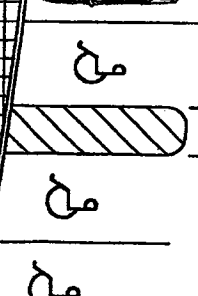
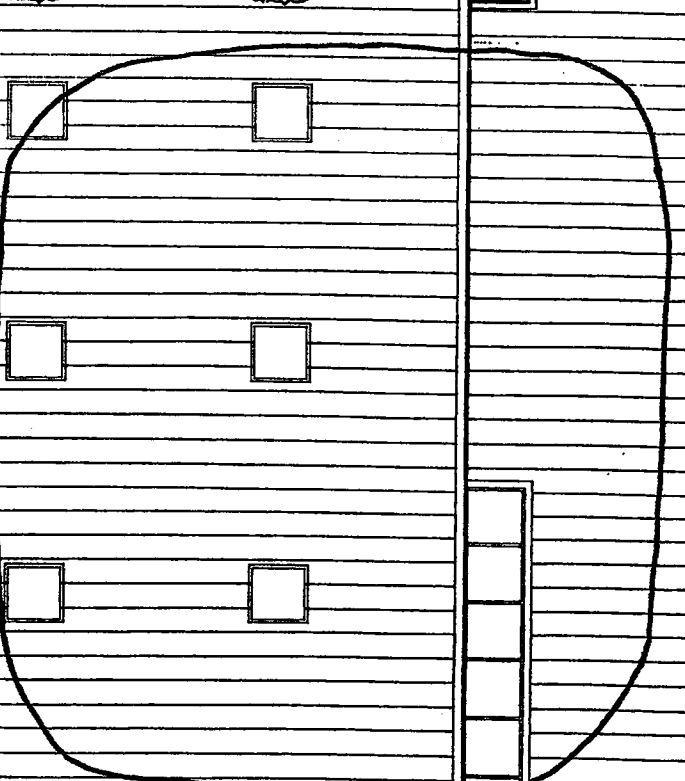
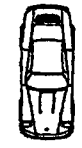
DRIVEWAY

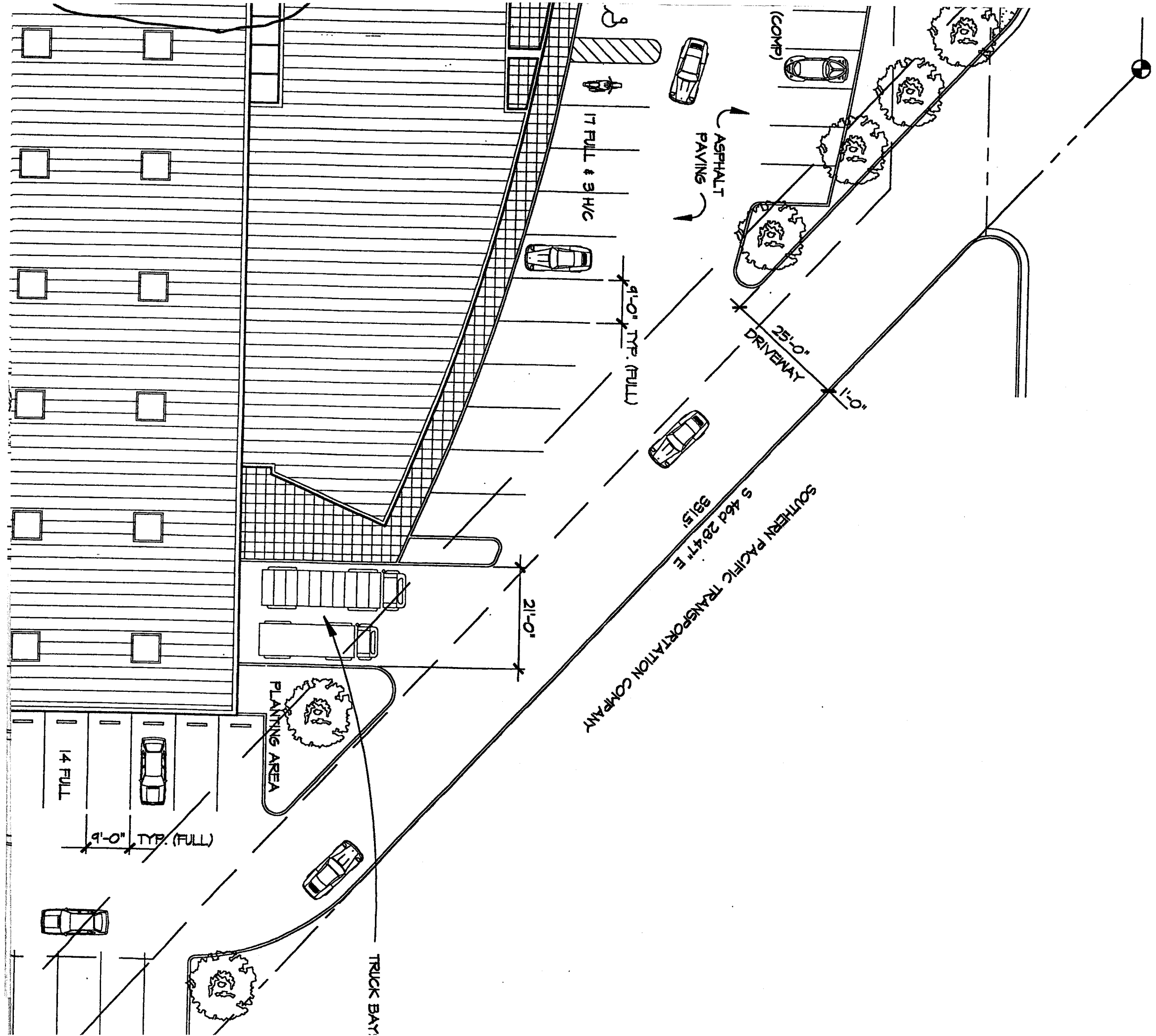
BACKUP

FRONT SETBACK

PLANTING AREA

COMP.





17 FULL & 3 H/C

9'-0" TYP. (FULL)

ASPHALT PAVING

25'-0" DRIVEWAY

1'-0"

SOUTHERN PACIFIC TRANSPORTATION COMPANY
S 464 28'47" E
38'51" S

PLANTING AREA

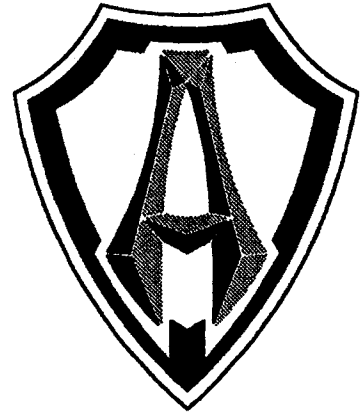
14 FULL

9'-0" TYP. (FULL)

TRUCK BAY

21'-0"

PROJECT



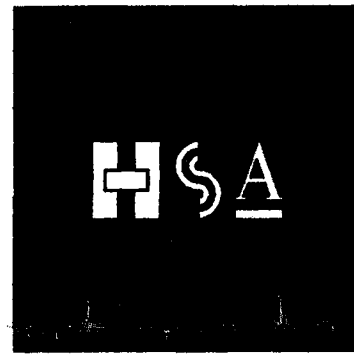
ARLEN NESS MOTORCYCLES
DUBLIN, CALIFORNIA

CLIENT

ARLEN NESS ENTERPRISES

16520 East 14th Street
San Leandro, CA 94578
T 510-276-3395 F 510-276-3534

ARCHITECT

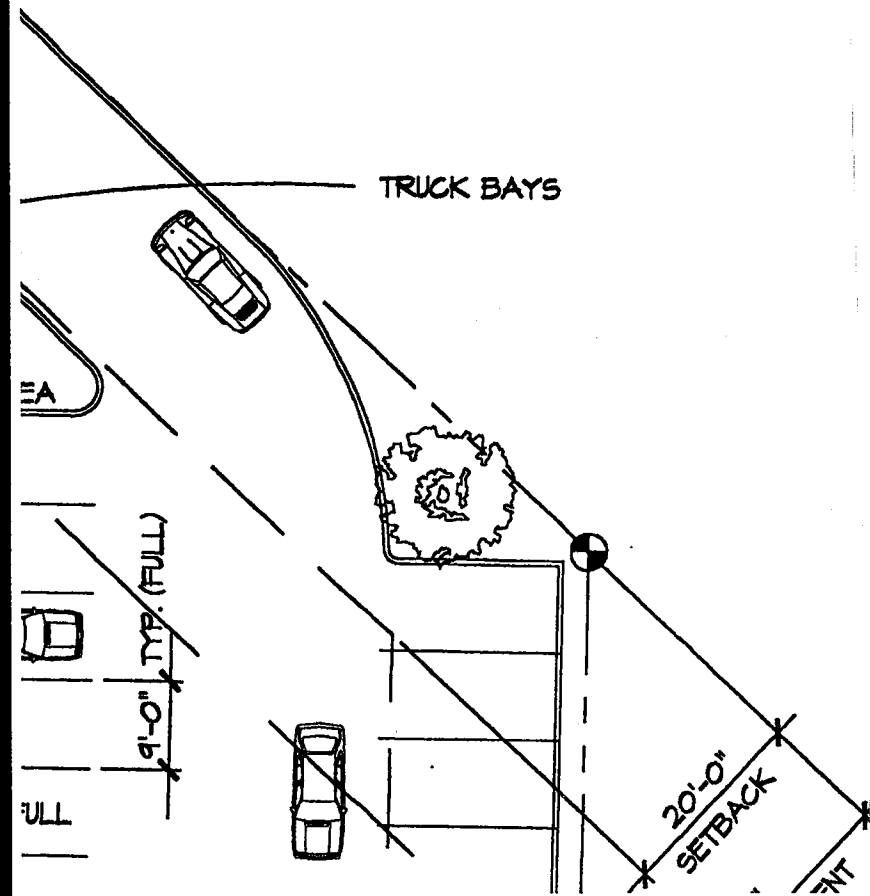


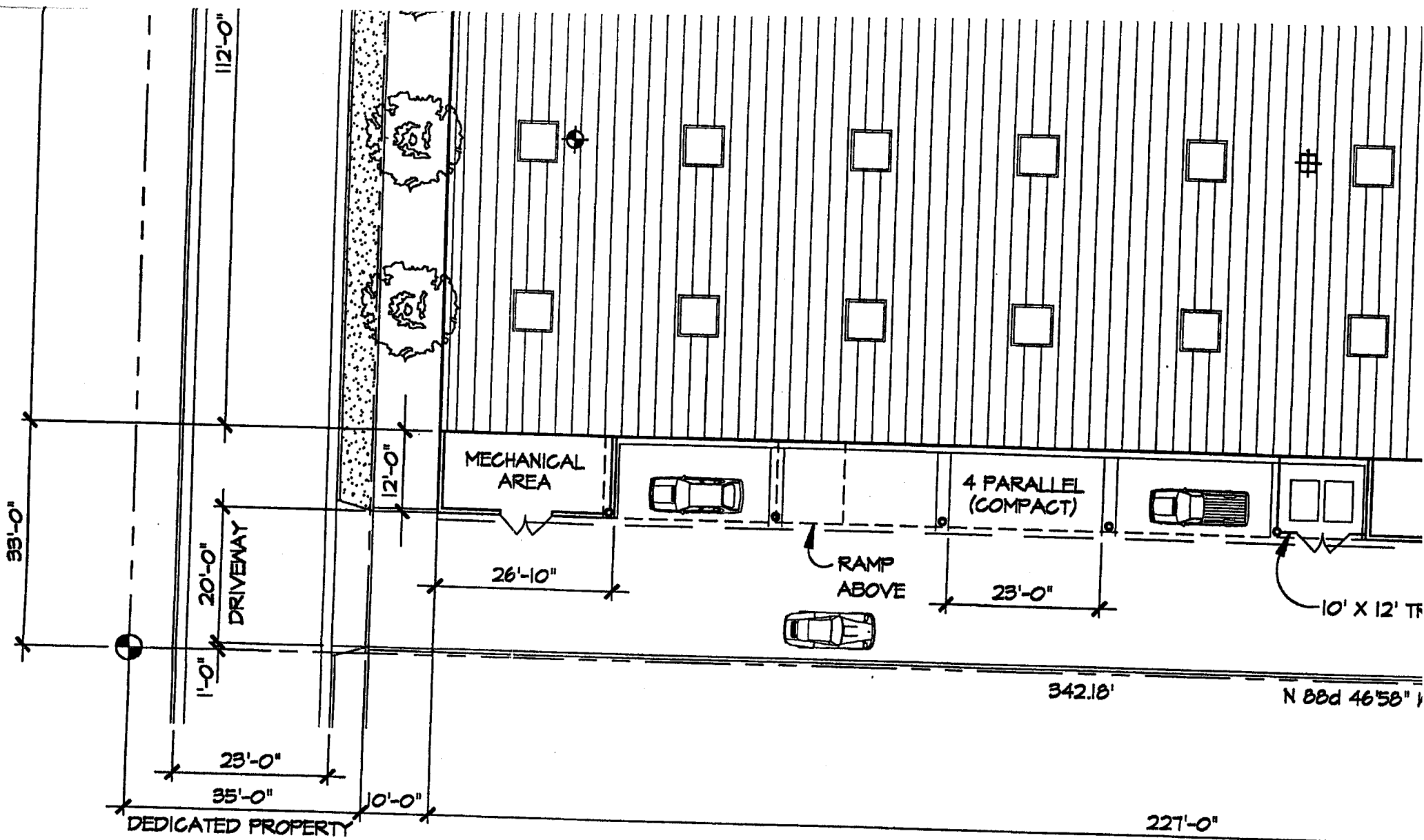
H e r b e r t
S a m o n s k y
A r c h i t e c t s
510-450-9090

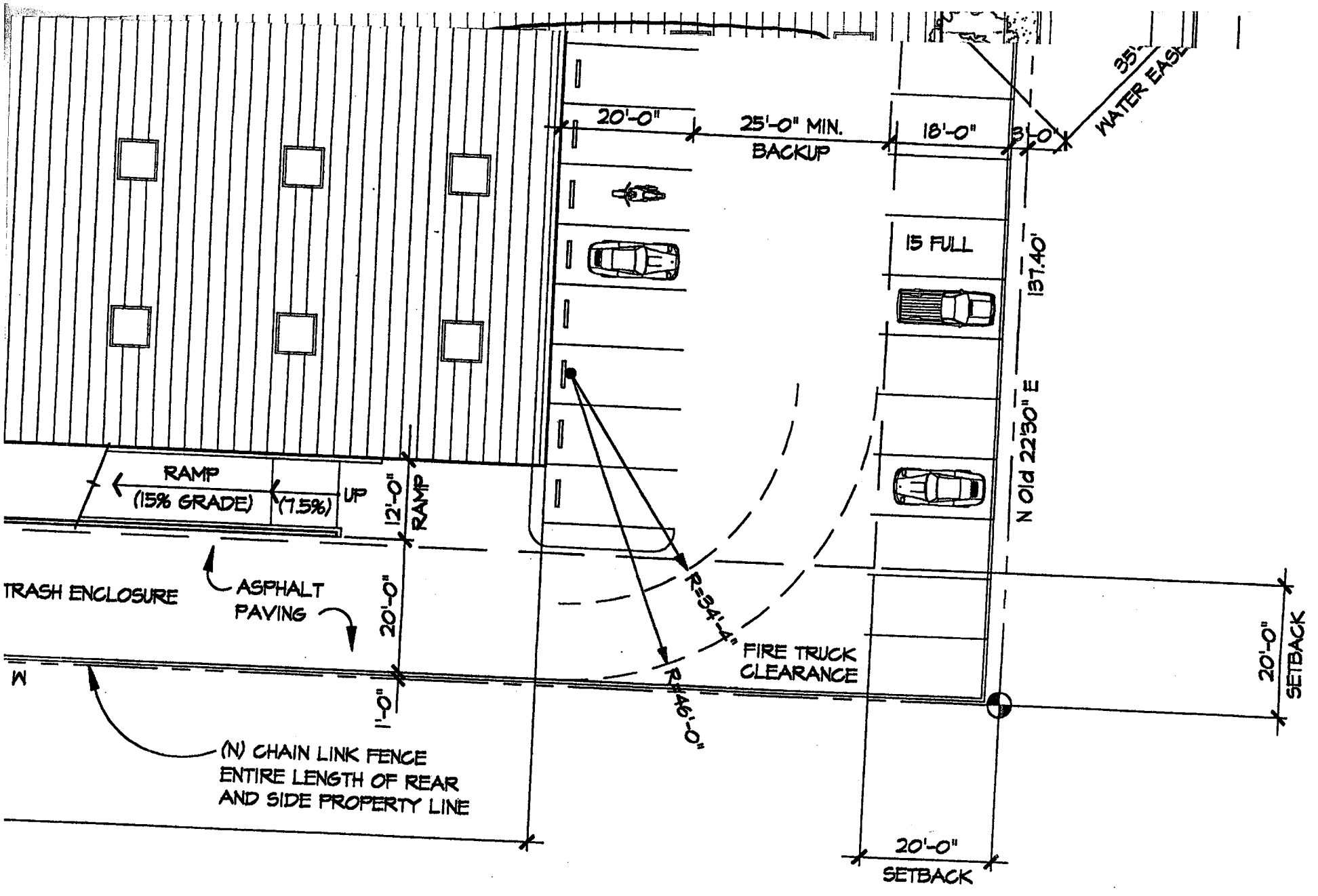
1342 Stanford Avenue Emeryville, California 94608 F 510-450-9090

CONSULTANT

CONSULTANT







UST Excavation



Groundwater Monitoring Well MW-1R
Approximate location of domestic well

Modifications by EnviroNet Consulting
May 1, 1998

BUILDING DATA

LEVEL:	GROSS FLOOR AREA
GROUND FLOOR:	35,200 sq. ft.
SECOND FLOOR:	32,600 sq. ft.
TOTAL BUILDING AREA:	67,800 sq. ft.
SITE AREA:	92,332 sq. ft.
LOT COVERAGE:	73 %
OCCUPANCY:	
MFR. / STORAGE	54,200 sq. ft.
SHOWROOM / DISPLAY	6,300 sq. ft.
OFFICE	3,500 sq. ft.
TOTAL NET OCCUPANCY:	64,000 sq. ft.
PARKING PROVIDED:	
FULL SIZE:	46 spaces
COMPACT:	15 spaces (23%)
HANDICAPPED:	3 spaces
TOTAL PARKING:	64 spaces

↑
SETBACK

ISSUES/REVISIONS

NO.	DATE	DESCRIPTION	DRAWN	CHECK
1	5/01/97	PLANNING APPROVALS	GS	JH

GROSS FLOOR AREA:

35,200 sq. ft.
32,600 sq. ft.

67,800 sq. ft.
92,332 sq. ft. (2.12 acres)
73 %

NET FLOOR AREA:

54,200 sq. ft.
6,300 sq. ft.
3,500 sq. ft.

64,000 sq. ft.

46 spaces
15 spaces (23%)
3 spaces
64 spaces

© COPYRIGHT 1996 "REPRODUCTION OR USE OF ANY MATERIALS HEREIN WITHOUT THE WRITTEN PERMISSION OF HERBERT & SAMONSKY ARCHITECTS VIOLATES THE COPYRIGHT LAWS OF THE UNITED STATES"

SHEET TITLE

SITE PLAN

PROJECT NO.

9628.00

PROJECT NAME

ARLEN NESS MOTORCYCLES

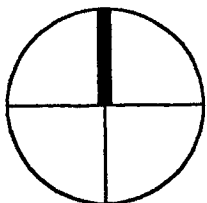
SCALE

1" = 20'

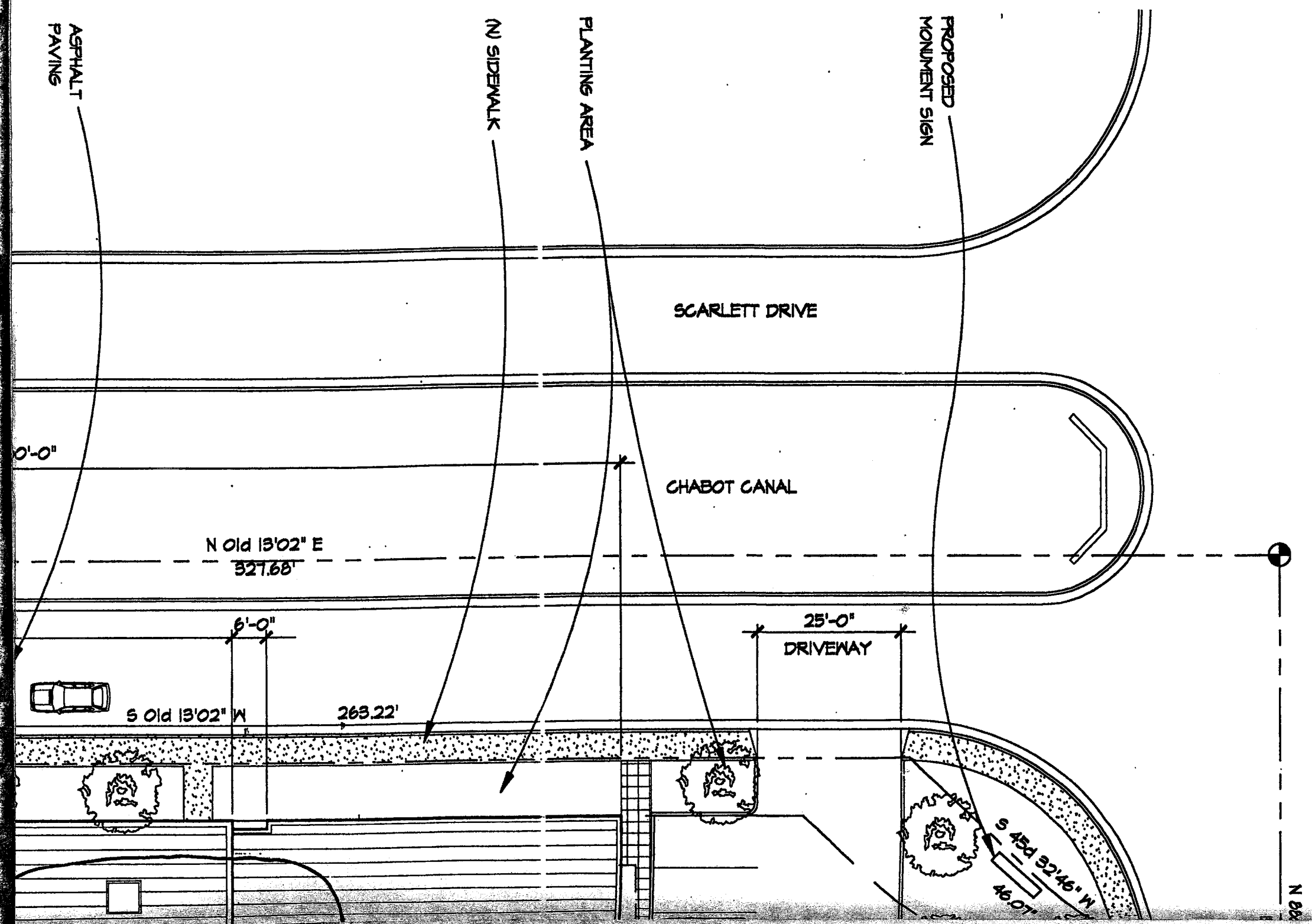


NORTH

SHEET NO.

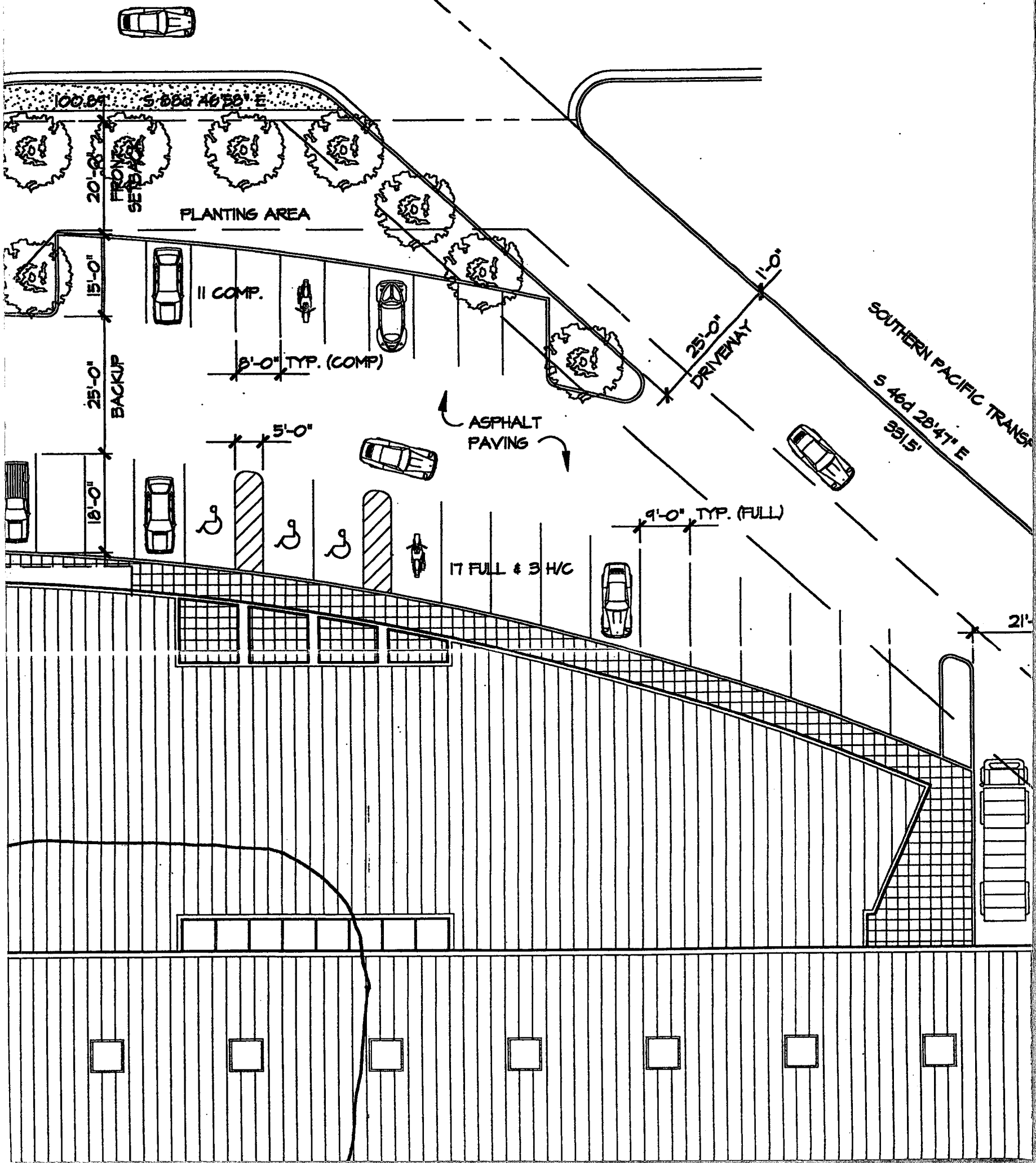


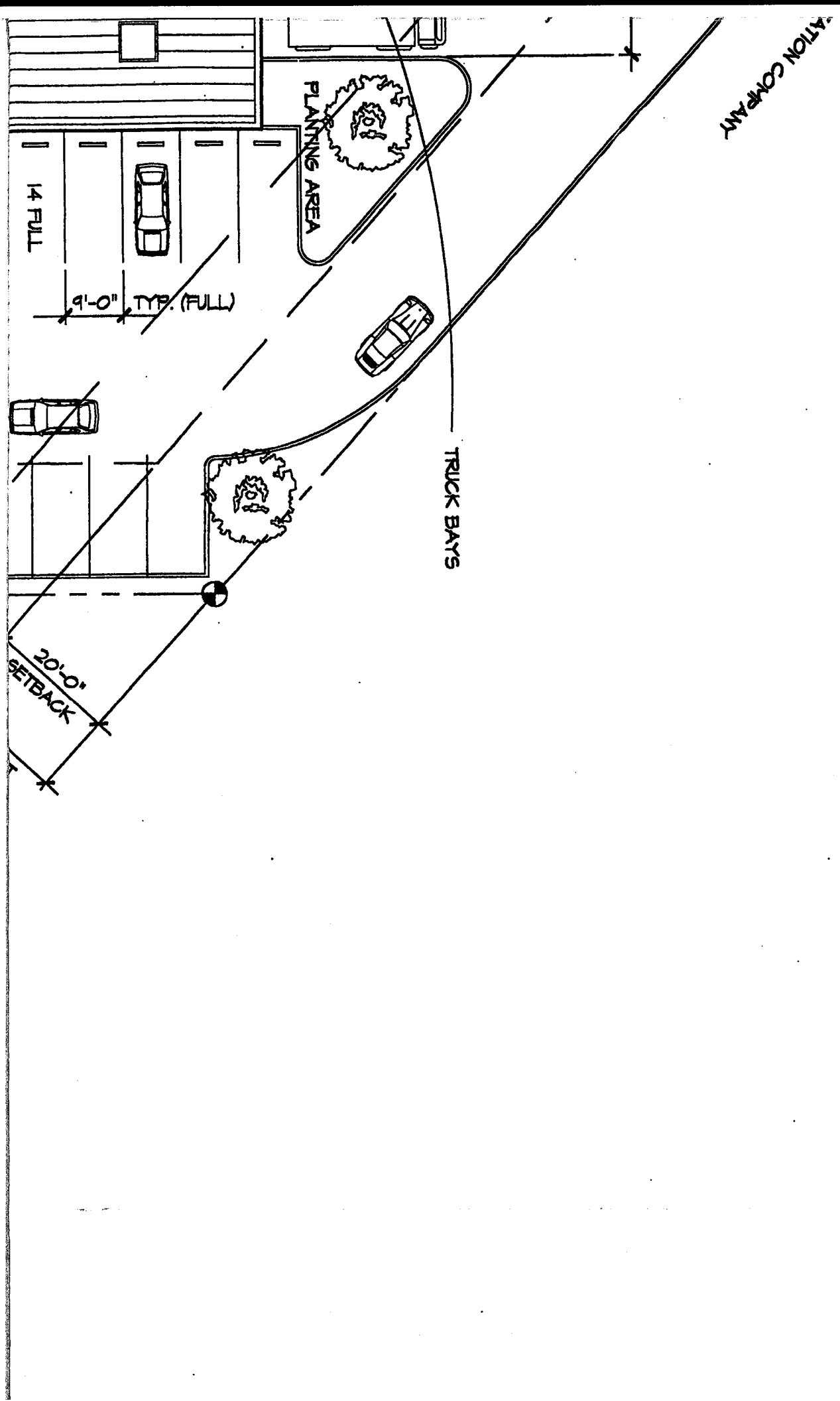
A1.1



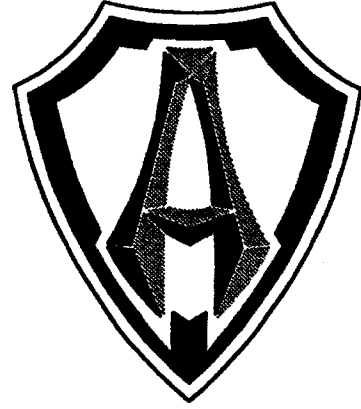
DUBLIN BLVD.

4650' N
33.47'





PROJECT



ARLEN NESS MOTORCYCLES
DUBLIN, CALIFORNIA

CLIENT

ARLEN NESS ENTERPRISES

16520 East 14th Street
San Leandro, CA 94578
T 510-276-3395 F 510-276-3534

ARCHITECT

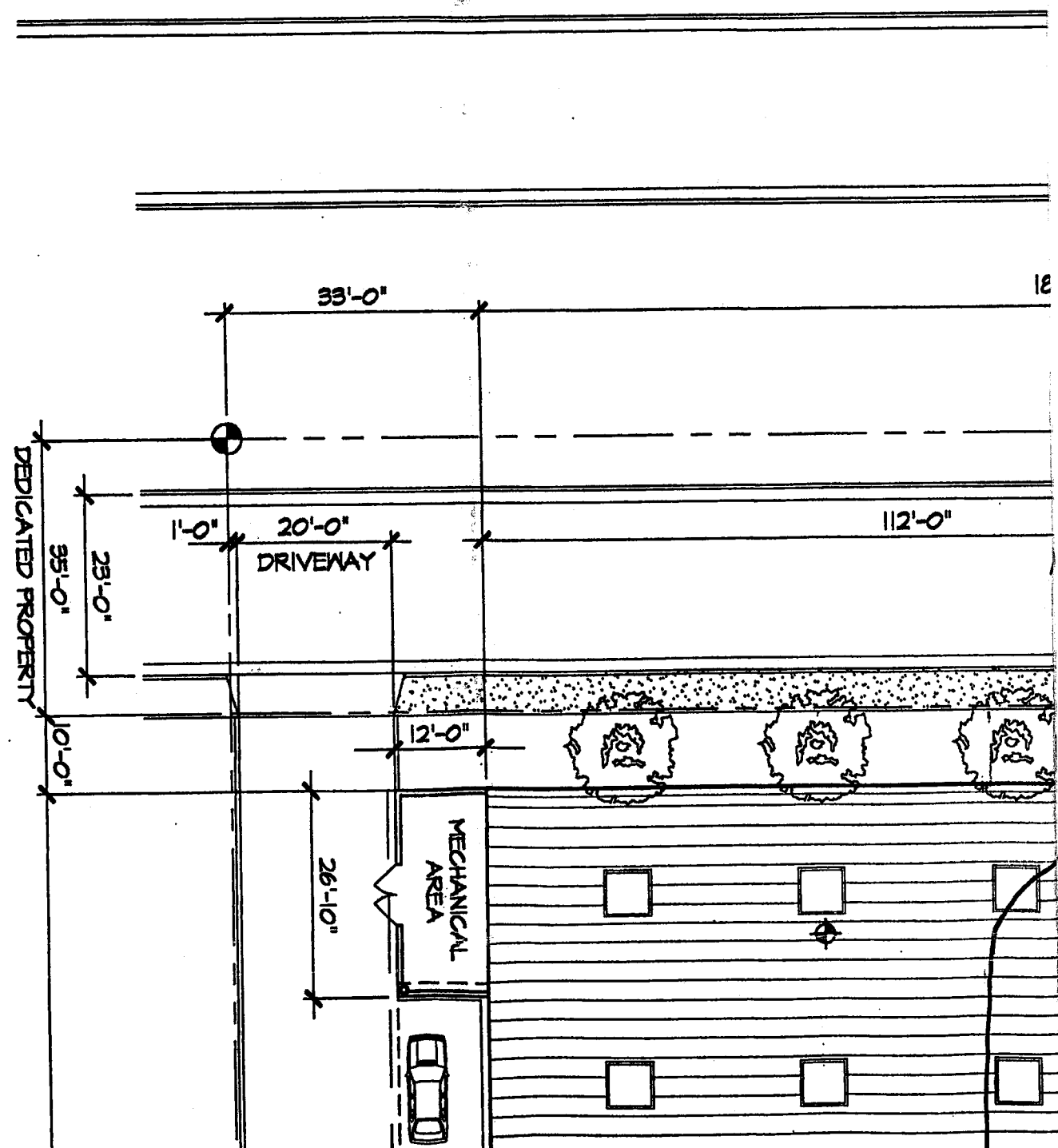


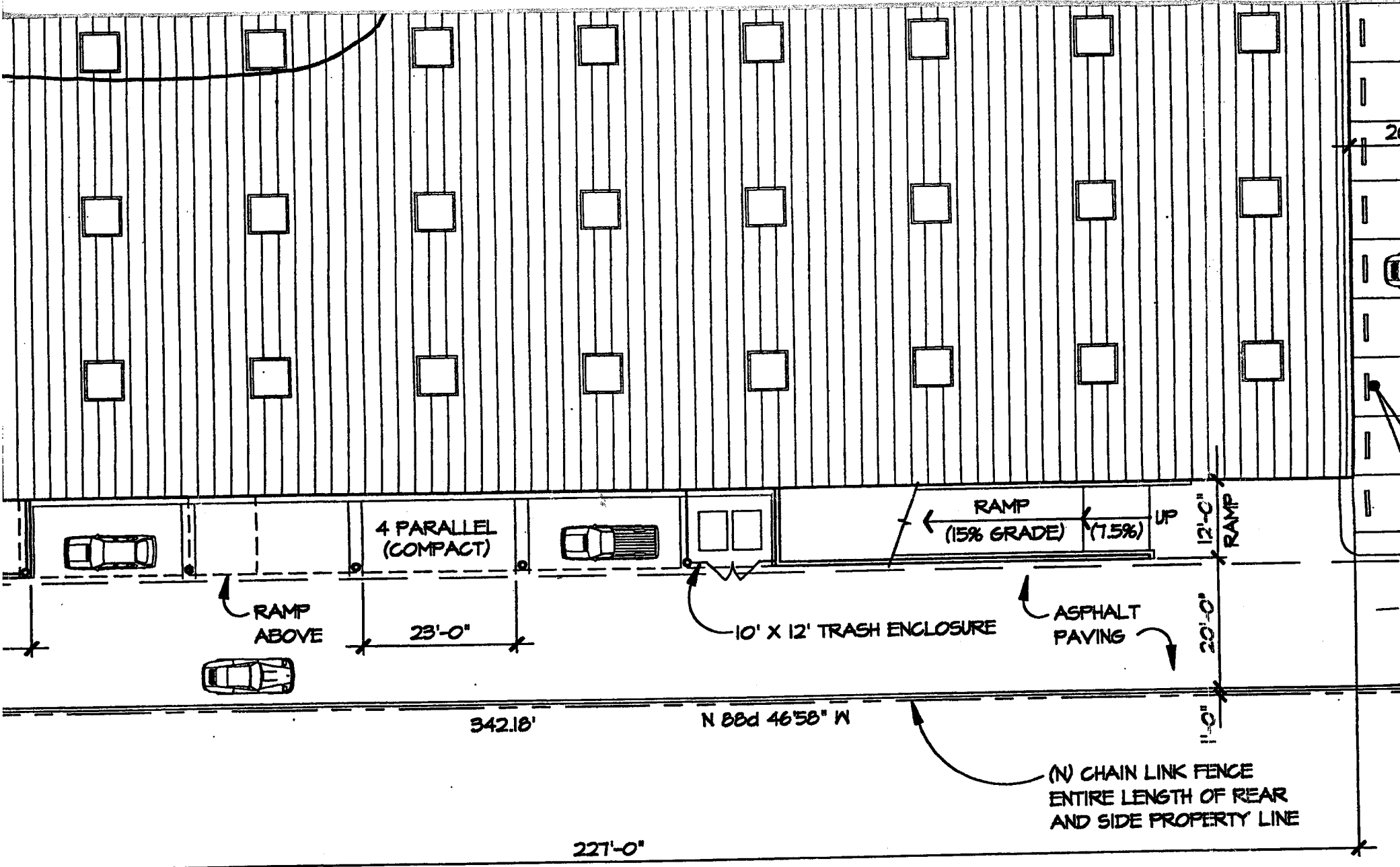
**H e r b e r t
S a m o n s k y
A r c h i t e c t s
510-450-9090**

1342 Stanford Avenue Emeryville, California 94608 F 510-450-9091

CONSULTANT

CONSULTANT



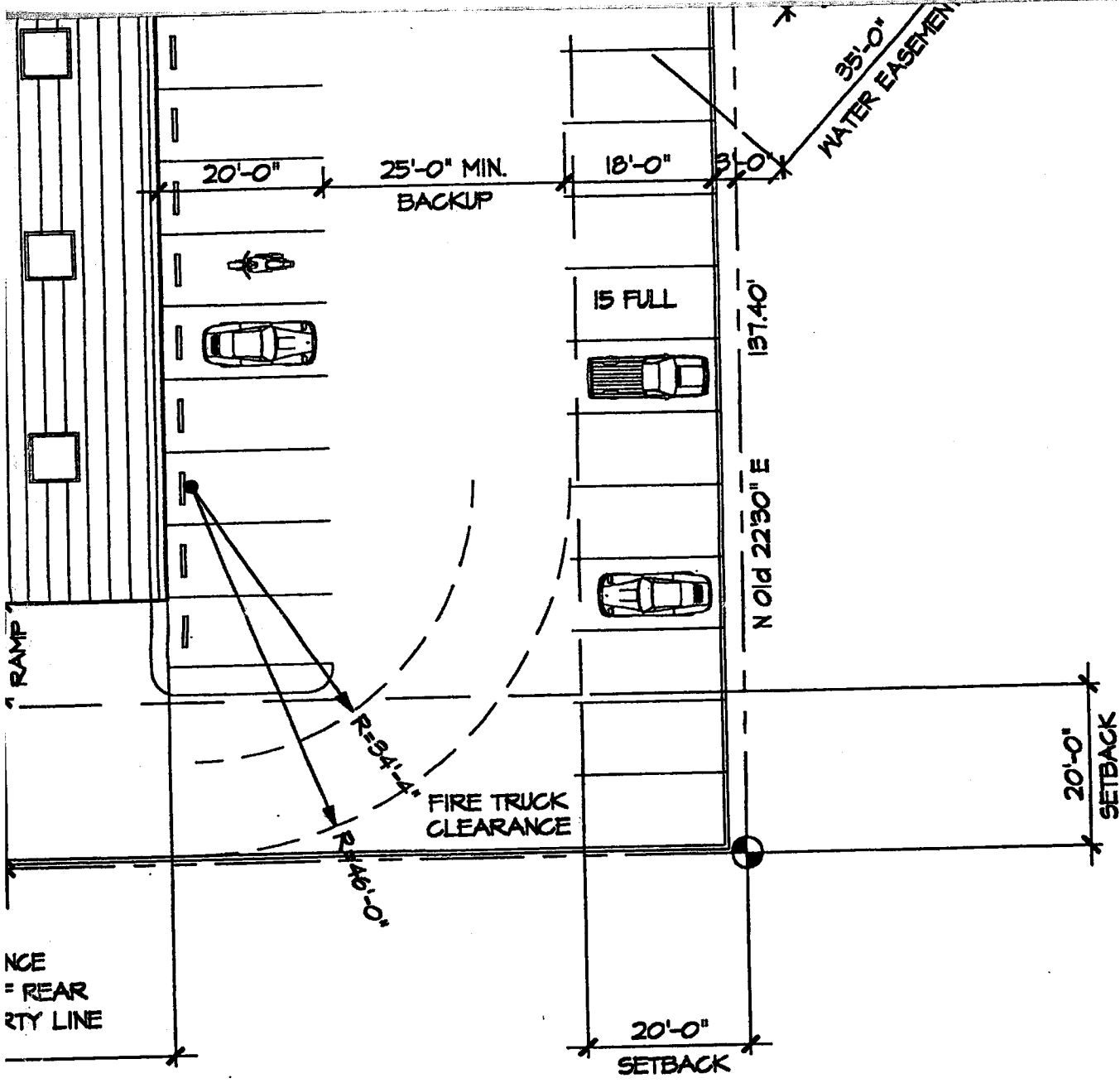


US



Gr

Mo
Ma



UST Excavation



Groundwater Monitoring Well MW-1R

Modifications by EnviroNet Consulting
May 1, 1998

BUILDING DATA

<u>LEVEL:</u>	<u>GROSS FLOOR AREA:</u>
GROUND FLOOR:	35,200 sq. ft.
SECOND FLOOR:	32,600 sq. ft.
TOTAL BUILDING AREA:	67,800 sq. ft.
SITE AREA:	92,332 sq. ft. (2.12 acres)
LOT COVERAGE:	73 %

<u>OCCUPANCY:</u>	<u>NET FLOOR AREA:</u>
MFR. / STORAGE	54,200 sq. ft.
SHOWROOM / DISPLAY	6,300 sq. ft.
OFFICE	3,500 sq. ft.
TOTAL NET OCCUPANCY:	64,000 sq. ft.

<u>PARKING PROVIDED:</u>	
FULL SIZE:	46 spaces
COMPACT:	15 spaces (23%)
HANDICAPPED:	3 spaces
TOTAL PARKING:	64 spaces

ISSUES/REVISIONS

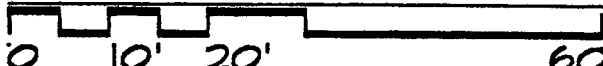
NO.	DATE	DESCRIPTION	DRAWN	CHECK
1	5/01/97	PLANNING APPROVALS	GS	JH

© COPYRIGHT 1996 "REPRODUCTION OR USE OF ANY MATERIALS HEREIN WITHOUT THE WRITTEN PERMISSION OF HERBERT & SAMONSKY ARCHITECTS VIOLATES THE COPYRIGHT LAWS OF THE UNITED STATES"

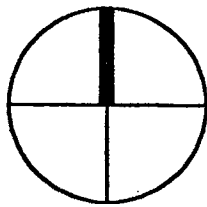
SHEET TITLE

SITE PLAN

PROJECT NO. 9628.00 PROJECT NAME ARLEN NESS MOTORCYCLES

SCALE 1" = 20' 

NORTH SHEET NO.



A1.1