

1990

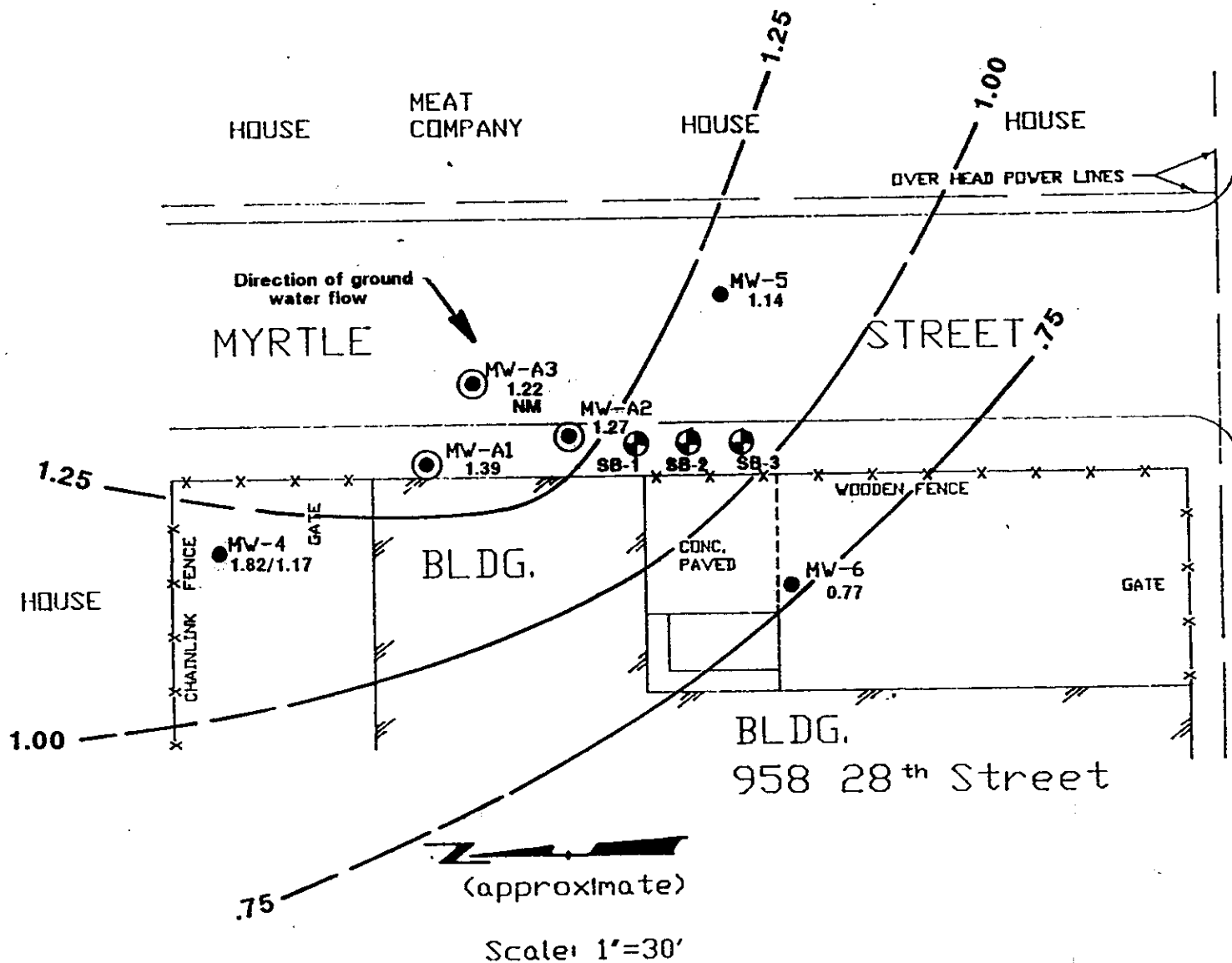
TABLE 1
WATER TABLE ELEVATIONS
MARCH 21, 1990

| Well ID | Top of Casing Elevation(ft) ¹ | Depth (ft) To Water | Depth (ft) To HC Product | Top of Water Table Elevation (ft) | Top of Liquid Elevation (ft) | FP Thickness (ft) |
|-------------------|--|---------------------|--------------------------|-----------------------------------|------------------------------|-------------------|
| MW-A1 | 15.03 | 13.64 | ND | 1.39 | 1.39 | 0 |
| MW-A2 | 14.40 | 13.13 | ND | 1.27 | 1.27 | 0 |
| MW-A3 | 14.58 | 13.26 | ND | 1.22 | 1.22 | 0 |
| MW-4 ² | 15.65 | 14.48 | 13.83 | 1.17 | 1.82 | .65 |
| MW-5 | 14.40 | 13.26 | ND | 1.14 | 1.14 | 0 |
| MW-6 | 14.46 | 13.69 | ND | 0.77 | 0.77 | 0 |

NOTE:

1. Reference elevation is to site standard and not referenced to mean sea level.
 2. Free floating hydrocarbon product = (FP) was detected in MW-4.
- ND = Not detected.





NOTE:

- Free product present in MW-4; top of liquid / top of water elevation listed for MW-4; ground water structure modeled at uncorrected top of water elevation
- Field activities 3/21/90 to 3/22/90.
- Contours dashed where uncertain.

• NM = Not Modeled

LEGEND:

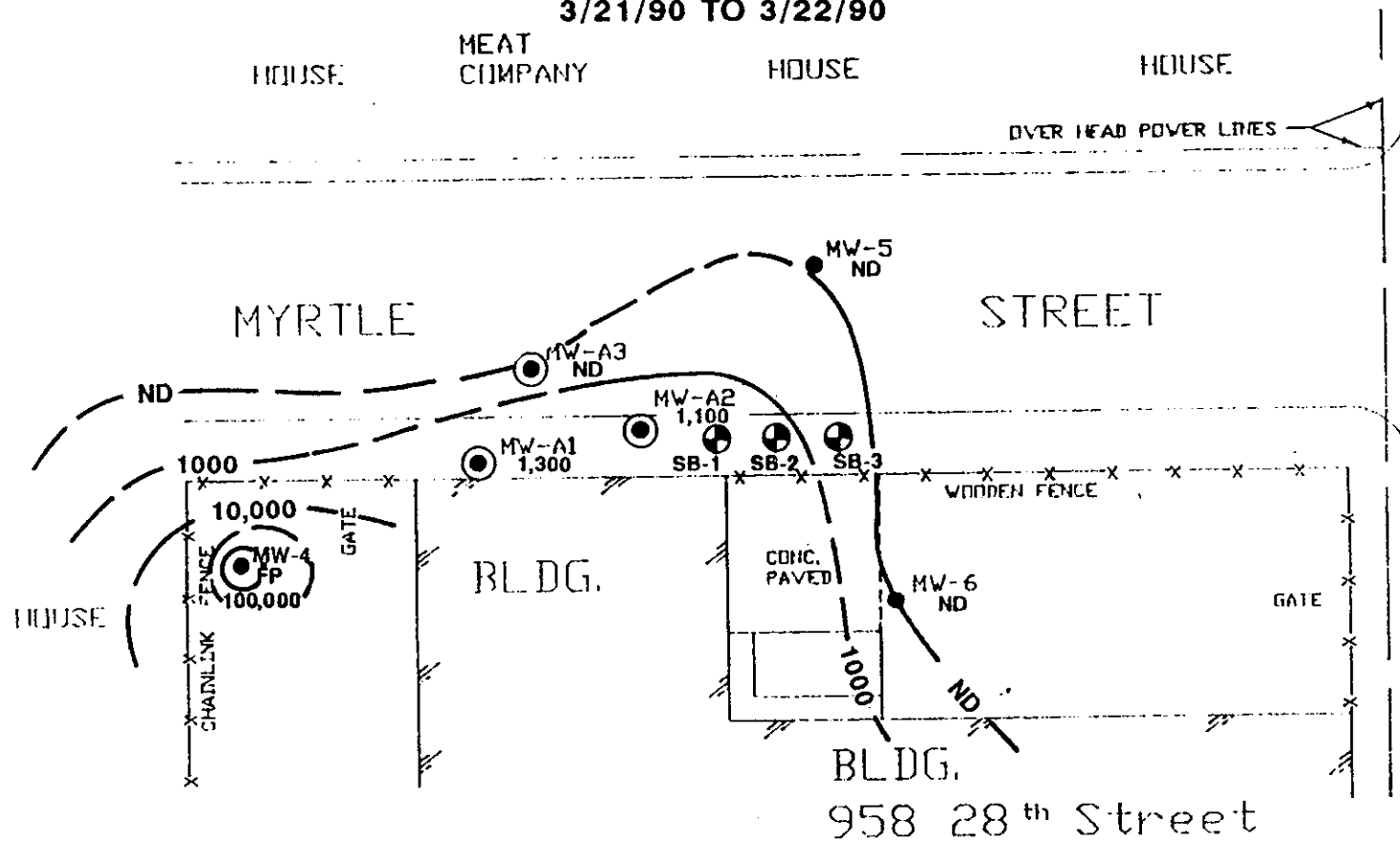
- = Soil borings by RMT March 1990
- ⊙ = Ground water monitoring wells installed by IT corp. February 1989.
- = Ground water monitoring wells installed by RMT; March 1990.

**Ground Water Gradient Map
Former Servisco Facility
(Modeled at Top of Water Elevation)**

| | |
|--------------------------------|----------------------|
| RMT <small>INC.</small> | Dwn by: RAS |
| | Date: MARCH 28, 1990 |
| | Proj # 1660.05/06 |

FIGURE 1

**MAP OF DISSOLVED
TPH CONCENTRATION
IN GROUND WATER
3/21/90 TO 3/22/90**

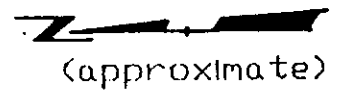


NOTE:

- Concentrations in ug/l
- Method detection limits = 500 ug/l
- Free Product detected in MW-4
- Contours dashed where uncertain.

Legend:

- = Soil borings by RMT March 1990
- = Ground water monitoring wells installed by IT corp. February 1989.
- = Ground water monitoring wells installed by RMT March 1990.



(approximate)

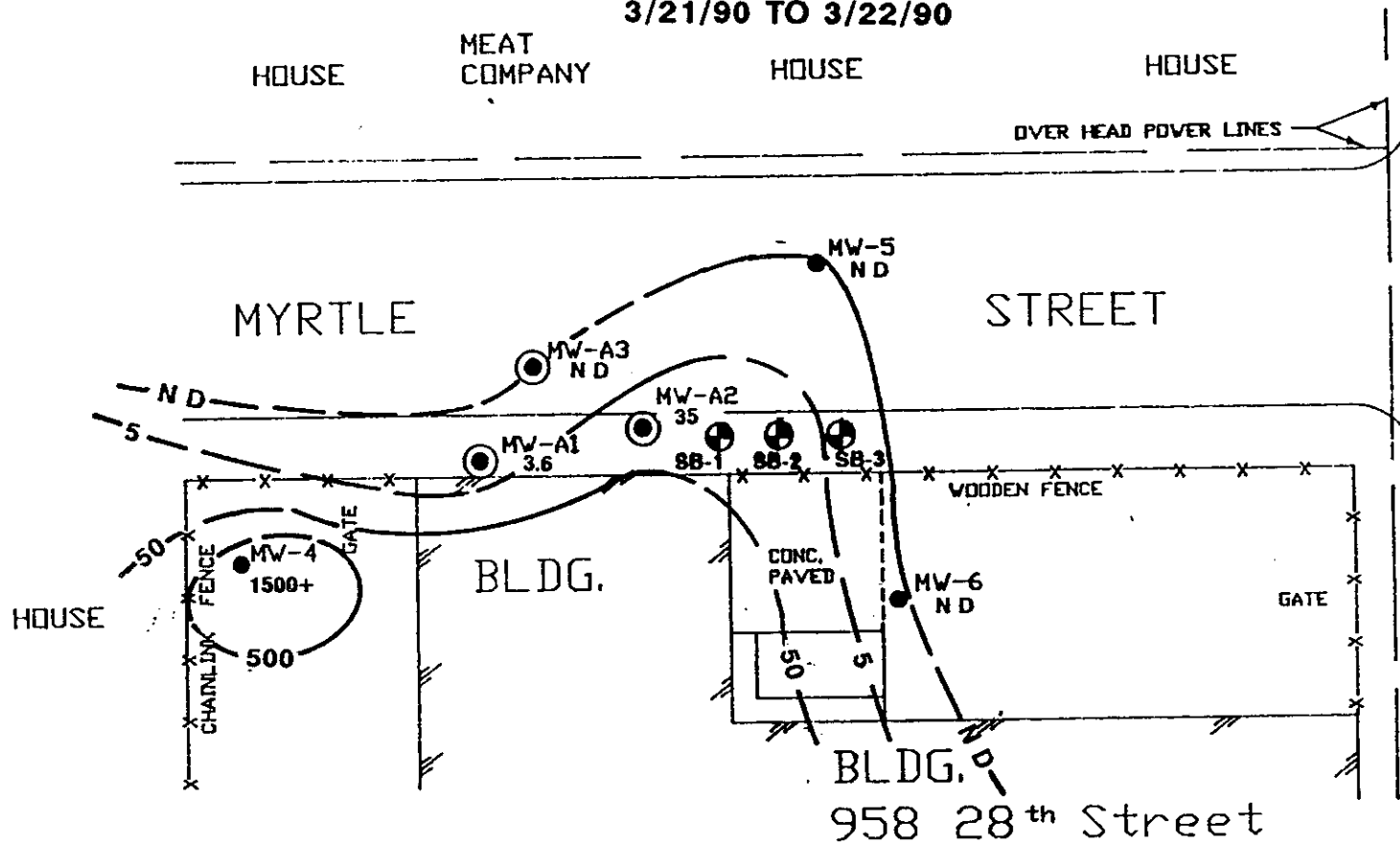
Scale: 1"=30'

Former Servisico Facility

| | |
|-----------------|----------------------|
| RMT INC. | Down by: RAS |
| | Date: MARCH 28, 1990 |
| | Proj # 1660.05/06 |

FIGURE 2

**MAP OF DISSOLVED
BENZENE CONCENTRATION
IN GROUND WATER
3/21/90 TO 3/22/90**



STREET

Note:

- Concentration in ug/l
- Method detection limit .2 ug/l
- Free product was detected in MW-4; concentration represents minimum concentration present.
- Contours dashed where uncertain.

28th

Legend:

- = Soil borings by RMT March 1990
- ⊙ = Ground water monitoring wells installed by IT corp. February 1989.
- = Ground water monitoring wells installed by RMT March 1990.



(approximate)

Scale: 1"=30'

Former Servisco Facility

| | |
|-----------------|----------------------|
| RMT INC. | Dwn by: RAS |
| | Date: MARCH 28, 1990 |
| | Proj# 1660.05/06 |

FIGURE 3

TABLE 6

SITE GROUND WATER MEASUREMENTS SUMMARY

958 - 28th Street
Oakland, California

| Date Installed: DATE/T.O.C. | A1 17-Feb-89 23.00 | A2 17-Feb-89 22.87 | A3 17-Feb-89 23.08 | 4 5-Mar-90 24.13 | 4A 15-Jul-91 24.13 | 5 6-Mar-90 22.89 | 6 5-Mar-90 23.37 | 7 17-Jul-91 21.37 | REMARKS |
|--------------------------------|--------------------------|--------------------------|--------------------------|------------------------|--------------------------|------------------------|------------------------|-------------------------|---|
| 3/21/90 | (13.64) 9.36 | (13.13) 9.74 | (13.26) 9.82 | (14.48) 9.65 | NA | (13.26) 9.63 | (13.69) 9.68 | NA | 0.65 feet of free product in MW-4 |
| 5/16/90 | (14.71) 8.29 | (14.18) 8.69 | (14.33) 8.75 | (13.43) NA | NA | (14.29) 8.60 | (14.71) 8.66 | NA | Free product in MW-4 at 13.34-ft depth |
| [~8:30 a.m.] 11/12/90 | (14.50) 8.50 | (13.06) 9.81 | (14.87) 8.21 | F.P. | NA | (14.20) 8.69 | (14.48) 8.89 | NA | MW-4: Free product; MW-A2: sheen on sfc. |
| [~7:30 a.m.] 11/13/90 | (14.59) 8.41 | (13.15) 9.72 | (14.98) 8.10 | F.P. | NA | (14.60) 8.29 | (14.02) 9.35 | NA | MW-4: free product |
| [~12:00] 2/12/91 | (14.64) 8.36 | (14.08) 8.79 | (14.20) 8.88 | F.P. | NA NA | (14.60) 8.29 | (14.65) 8.72 | NA NA | Replaced cap MW-6 |
| 7/15/91 | (14.24) 8.76 | (14.05) 8.82 | (14.49) 8.59 | NA NA | NA NA | (14.41) 8.48 | (14.50) 8.87 | NA NA | MW-4 abandoned; ~3' free product removed |
| 8/5/91 | (14.62) 8.38 | (14.10) 8.77 | (14.22) 8.86 | NA NA | (15.00) 9.13 | unable to open | (14.60) 8.77 | inaccessible dogs | Wastes disposal: soils |
| [~9:00 a.m.] 8/27/91 | (14.75) 8.25 | (14.36) 8.51 | (14.22) 8.86 | NA NA | (15.13) 9.00 | (14.32) 8.57 | gate locked | (13.00) 8.37 | Wastes disposal: liquids |
| [~9:00 a.m.] 9/23/91 | (15.01) 7.99 | (14.46) 8.41 | (14.60) 8.48 | NA NA | (15.45) 8.68 | (14.46) 8.43 | (15.00) 8.37 | (13.28) 8.09 | |
| Maximum Elev. | 9.36 | 9.81 | 9.82 | 9.65 | 9.13 | 9.63 | 9.68 | 8.37 | |
| Minimum Elev. | 7.99 | 8.41 | 8.10 | 9.65 | 8.68 | 8.29 | 8.37 | 8.09 | |
| Elev. Difference | 1.37 | 1.40 | 1.72 | .00 | .45 | 1.34 | 1.31 | .28 | |

Notes:

1. Wells MW-A1 through MW-A3 installed by IT, Corp.; All other wells installed by RMT, Inc.
2. Well MW-4 readings for November 1990 and July 1991 obscured by presence of free product.
3. Well MW-4 abandoned on July 15, 1991 by RMT, Inc.
4. All elevations reference to MSL as determined by top of casing (T.O.C.) elevations survey by Kier & Wright Civil Engineers & Surveyors; performed on July 19, 1991.