

November 1, 1996

LF 5812.00-000

Ms. Susan Hugo
Senior Hazardous Materials Specialist
Alameda County Health Care Agency
1131 Harbor Bay Parkway
Alameda, California 94502

Subject: Historical Groundwater Elevation Data and Utility Location Map, Broadway
Medical Plaza, 3300 Webster Street, Oakland, California

Dear Ms. Hugo:

Pursuant to your request please find attached a table presenting a summary of historical groundwater elevations and related figures for the Broadway Medical Plaza located at 3300 Webster Street, Oakland, California ("the Site"). In addition, Levine·Fricke·Recon reviewed utility location maps at the City of Oakland Public Works Department and East Bay Municipal Utility District. Copies of the maps for the Site area are attached for your review. The maps indicate that the gas, sanitary sewer, storm drain, and water lines are located at a maximum depth of 11 feet below ground surface (bgs) which is well above the groundwater at the Site (approximately 20 feet bgs). Therefore, the utility lines in Hawthorne Avenue should not affect groundwater flow in the Site vicinity.

If you have any questions or comments, please call me or Kathleen Isaacson, R.G.

Sincerely,



Kimberly A. Brandt
Senior Geologist

Attachment

cc: John Barnard, Esq.

TABLE 1
GROUNDWATER ELEVATIONS
3300 WEBSTER STREET
OAKLAND, CALIFORNIA

Well Number	Top of Casing Elevation (feet -msl)	Groundwater Elevations (feet) 3-Mar-89	Groundwater Elevations (feet) 19-Jul-89	Groundwater Elevations (feet) 9-Jan-90	Groundwater Elevations (feet) 5-Apr-90	Groundwater Elevations (feet) 2-Jul-90	Groundwater Elevations (feet) 3-Oct-90	Groundwater Elevations (feet) 6-Mar-91	Groundwater Elevations (feet) 21-May-91	Groundwater Elevations (feet) 18-Sep-96
LF-1	99.57	73.95	73.91	69.89	70.63	69.93	69.33	69.74	70.71	71.87
LF-2	91.19	69.89 (21.30)	70.09 (21.10)	70.76 (20.43)	69.95 (21.24)	71.17 (20.02)	69.85 (21.34)	69.26 (21.92)	70.25 (20.94)	71.41 (19.78)
LF-3	89.09	70.29	70.3	70.03	70.60	70.10	69.94	69.22	70.29	71.43
LF-4	90.65	69.65	68.66	69.15	69.42	69.35	68.47	67.78	68.72	69.86

msl - mean sea level

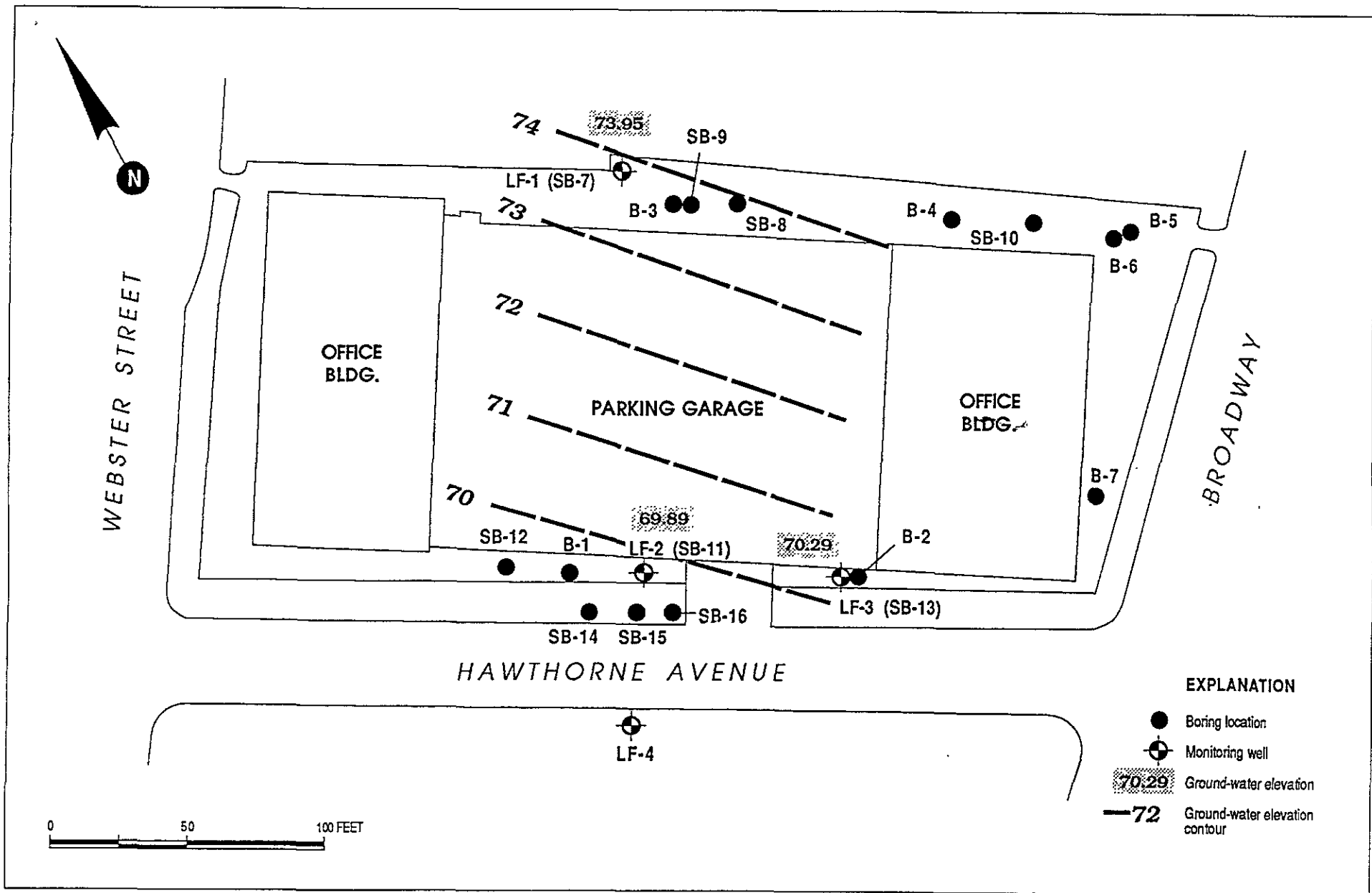


Figure 5 : CONTOURED GROUND-WATER ELEVATIONS, 3 MARCH 1989

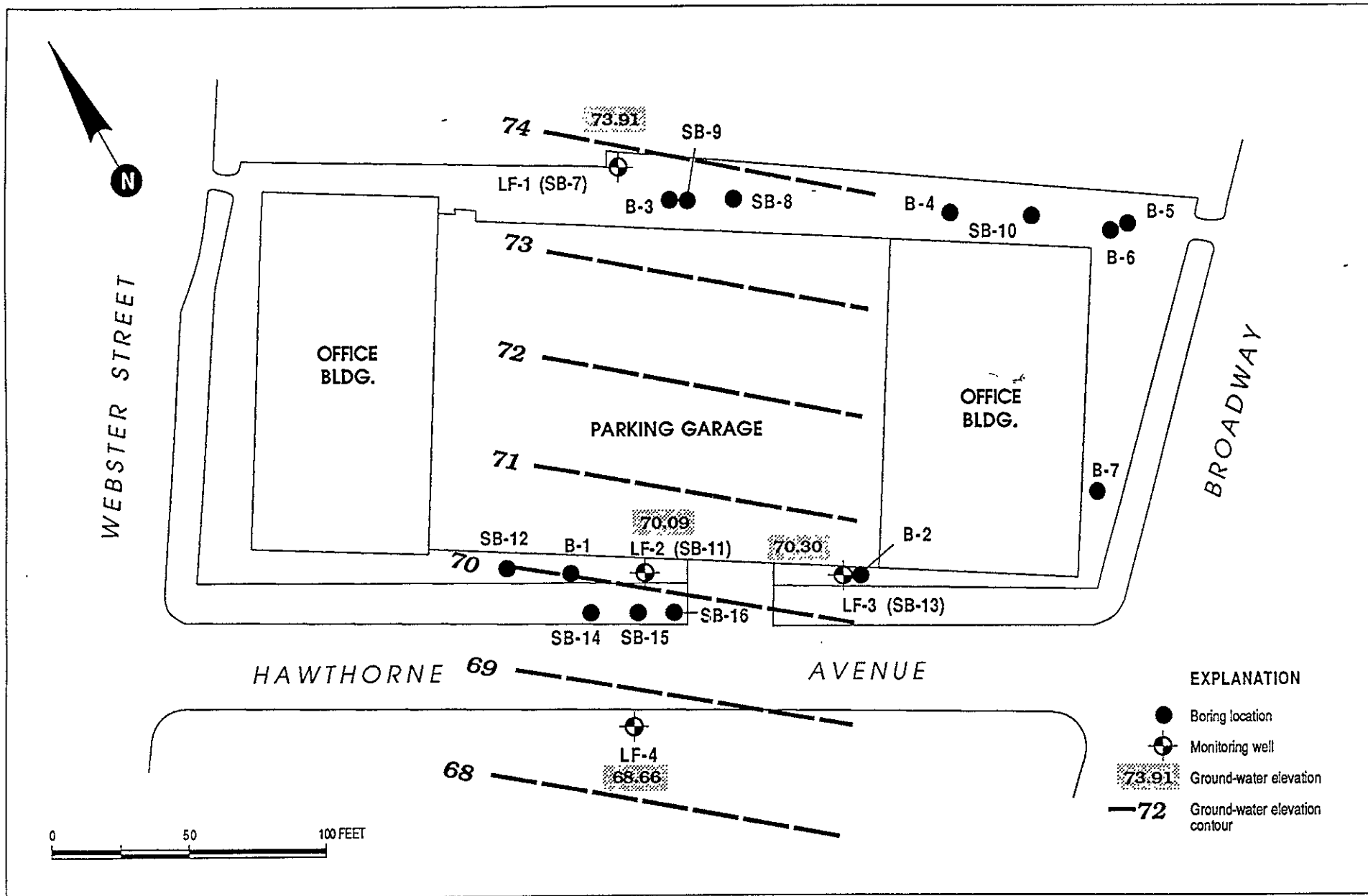


Figure 6 : CONTOURED GROUND-WATER ELEVATIONS, 19 JULY 1989

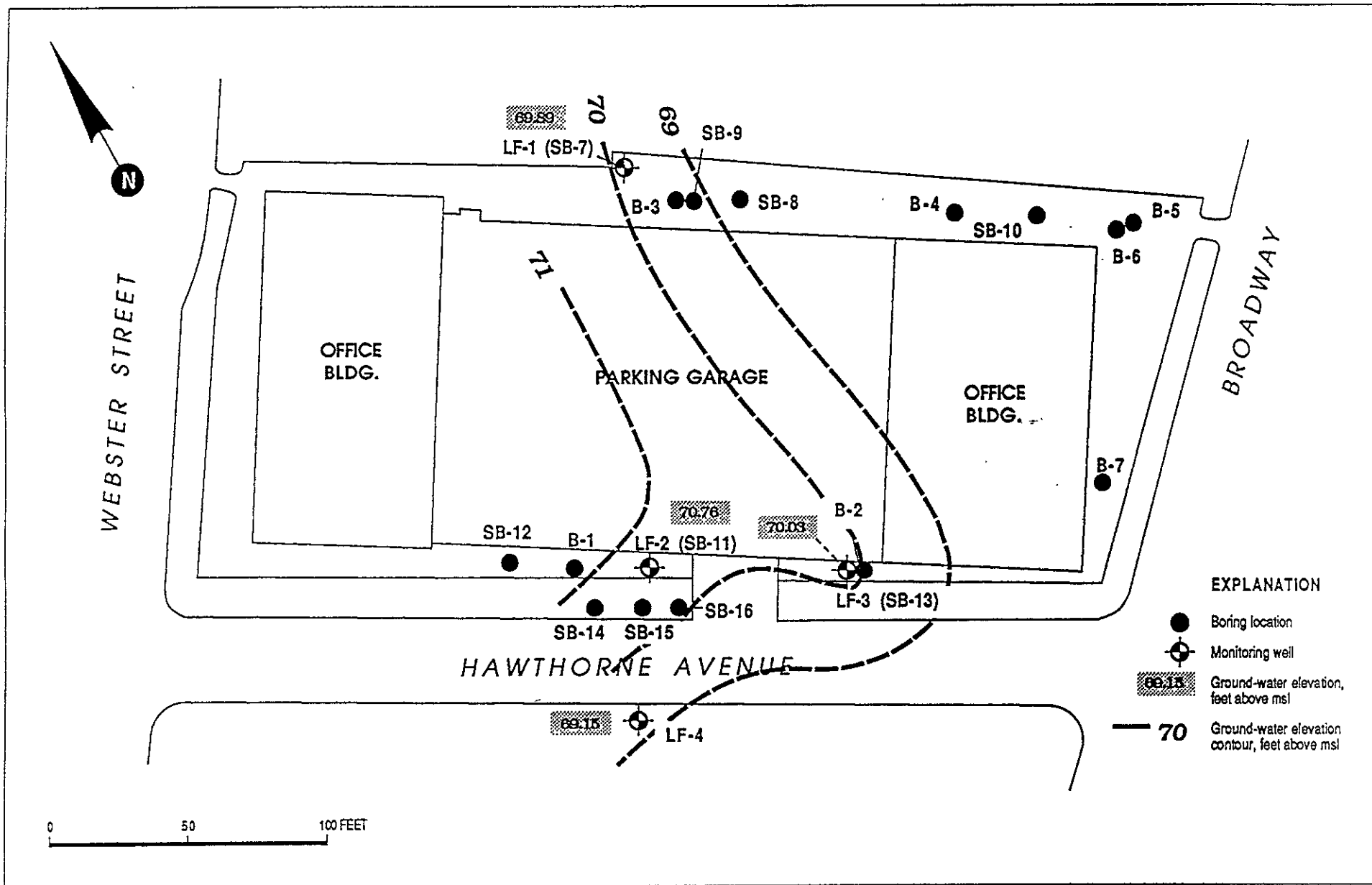


Figure 2 : CONTOURED GROUND-WATERT ELEVATIONS, JANUARY 9, 1990

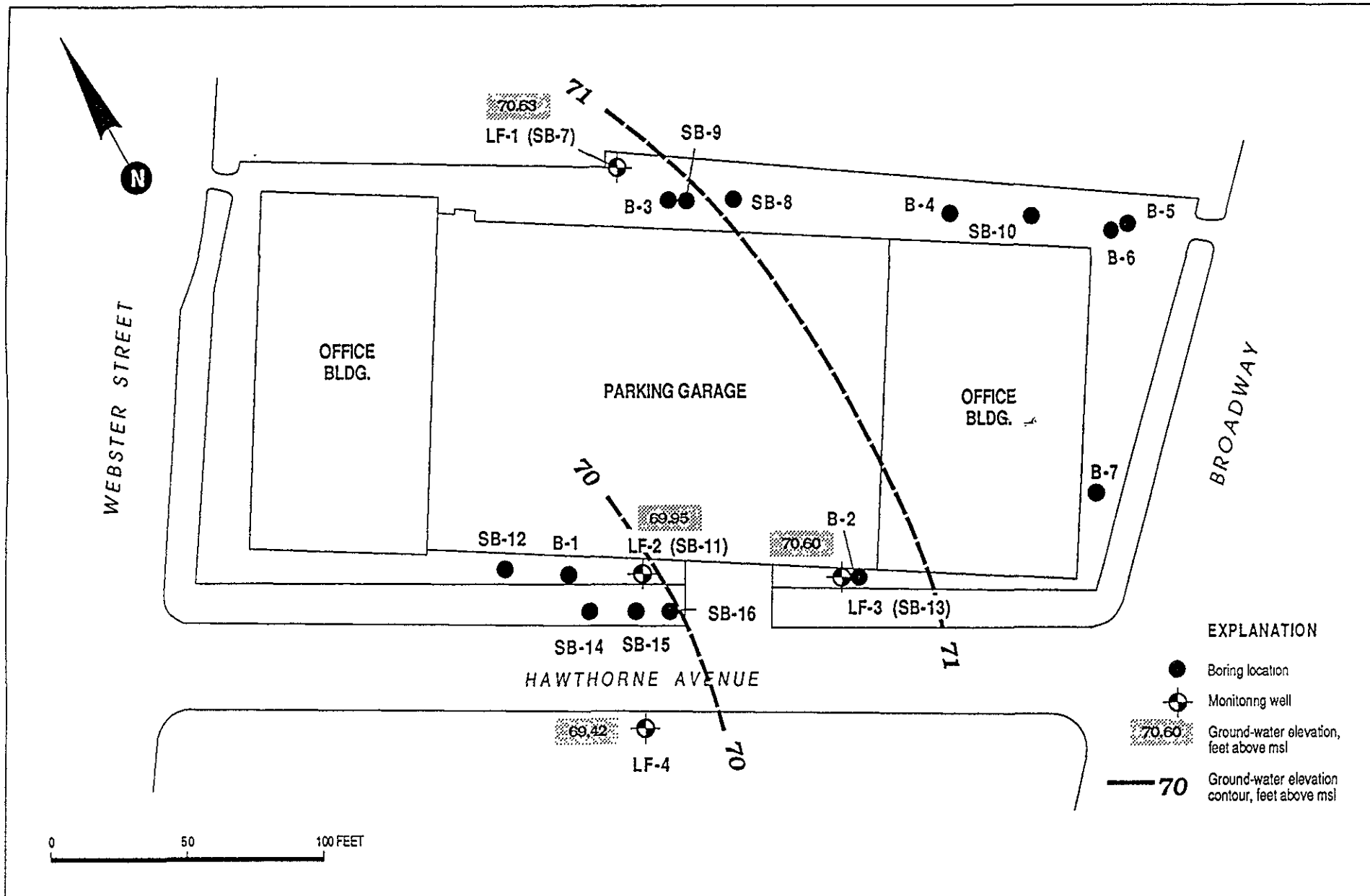


Figure 2 : CONTOURED GROUND-WATER ELEVATIONS, APRIL 5, 1990

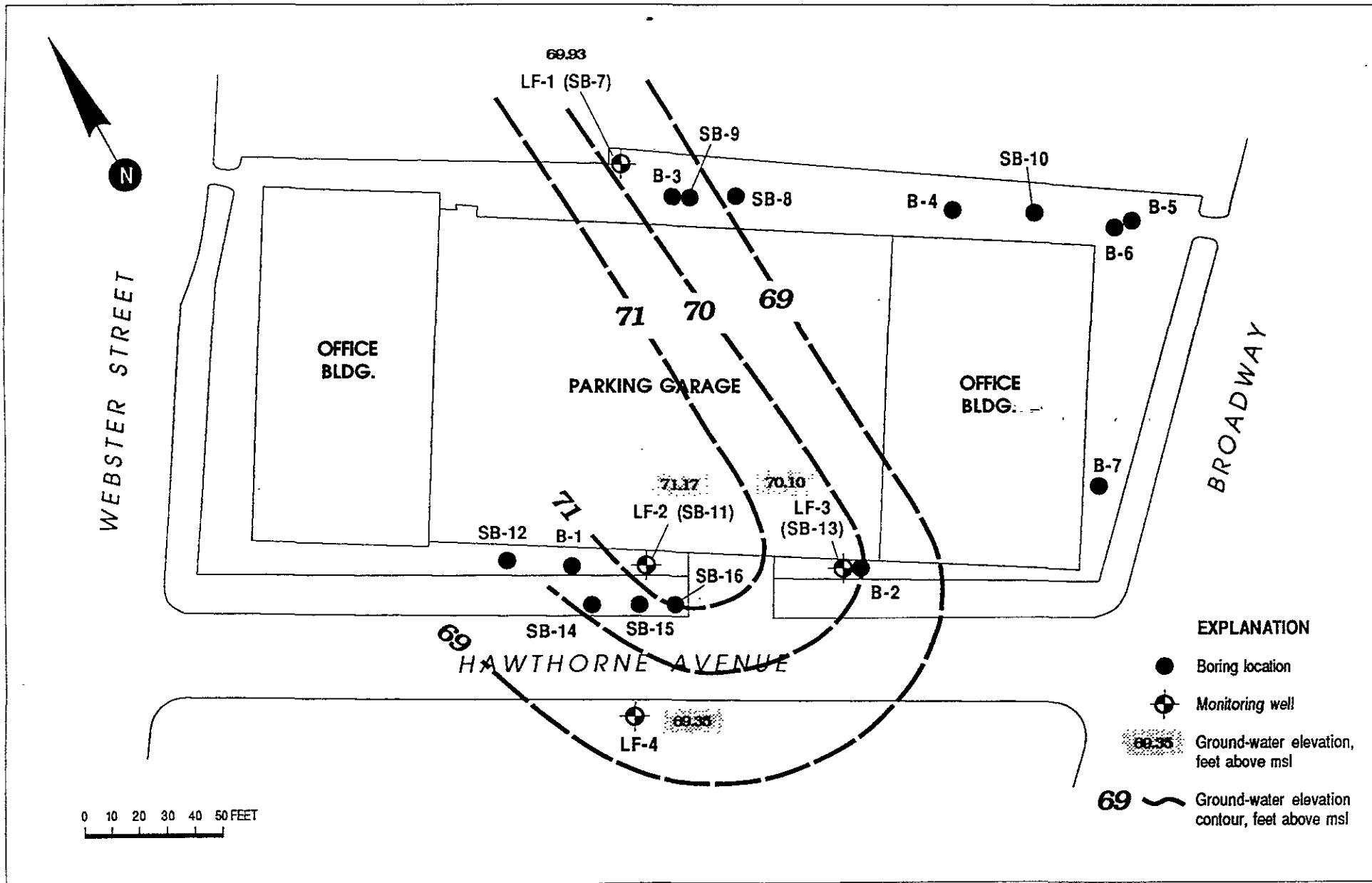


Figure 3 : CONTOURED GROUND-WATER ELEVATIONS, JULY 2, 1990

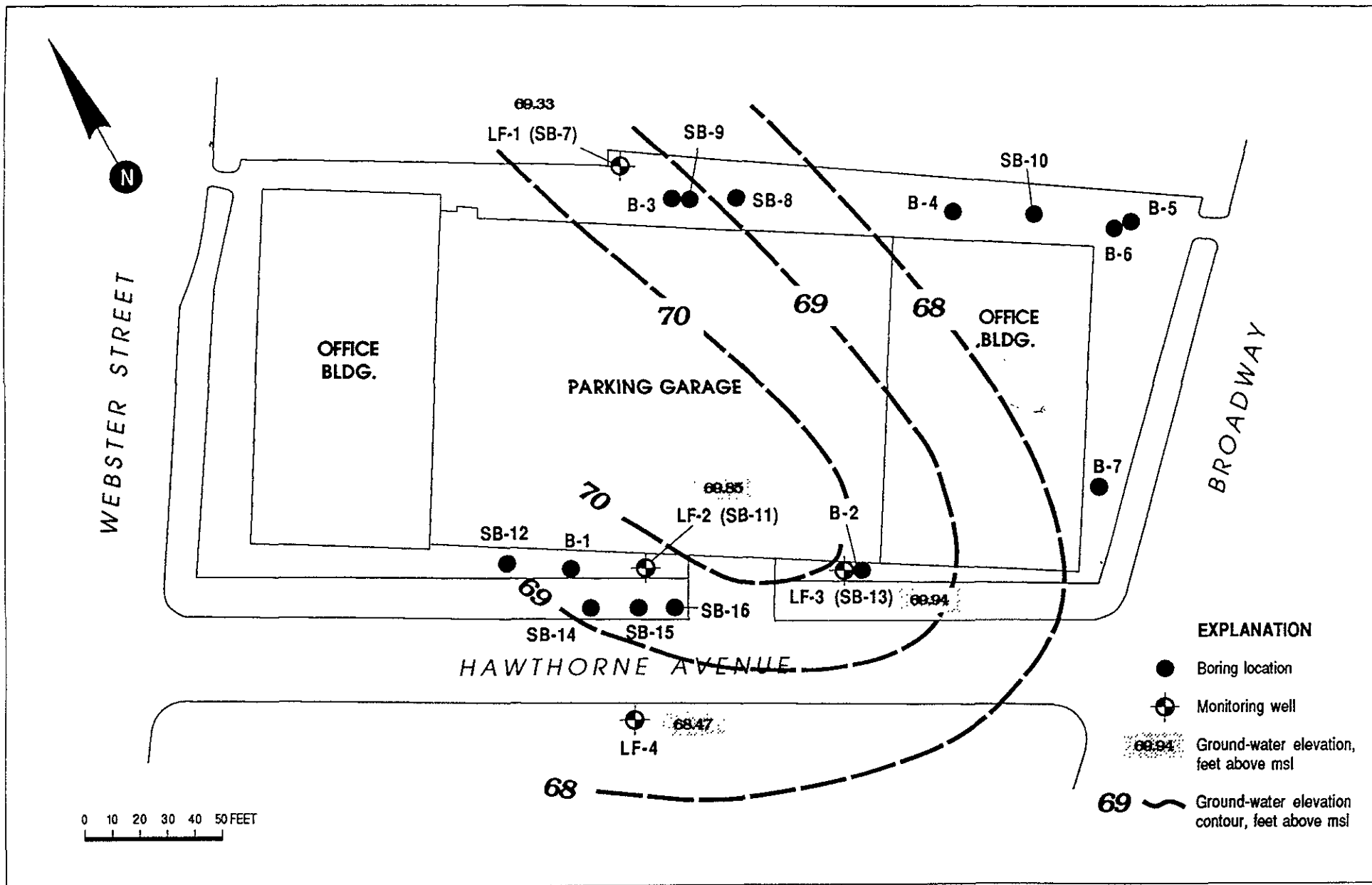


Figure 2 : CONTOURED GROUND-WATER ELEVATIONS, OCTOBER 3, 1990

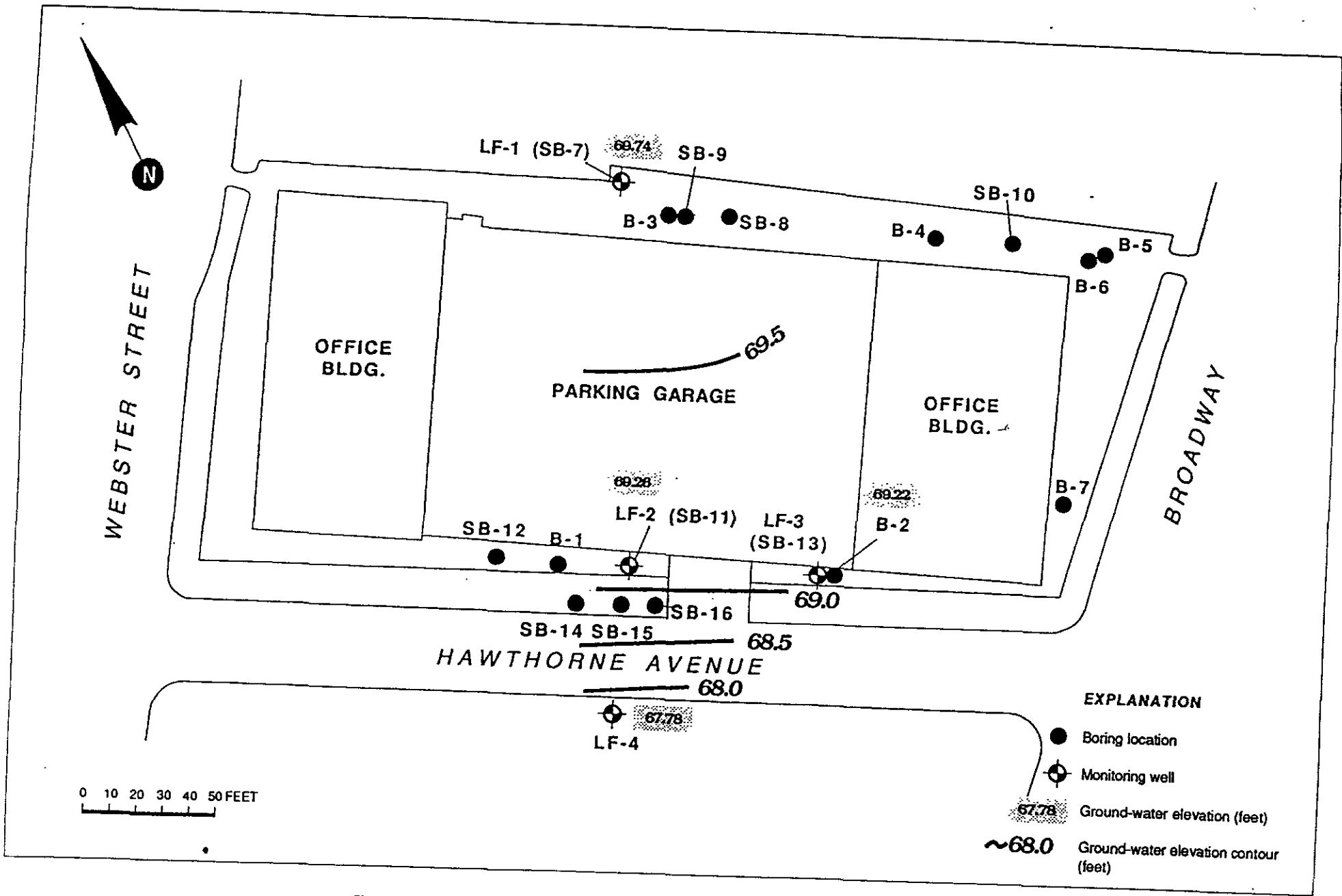


Figure 2 : CONTOURED GROUND-WATER ELEVATIONS, MARCH 6, 1991

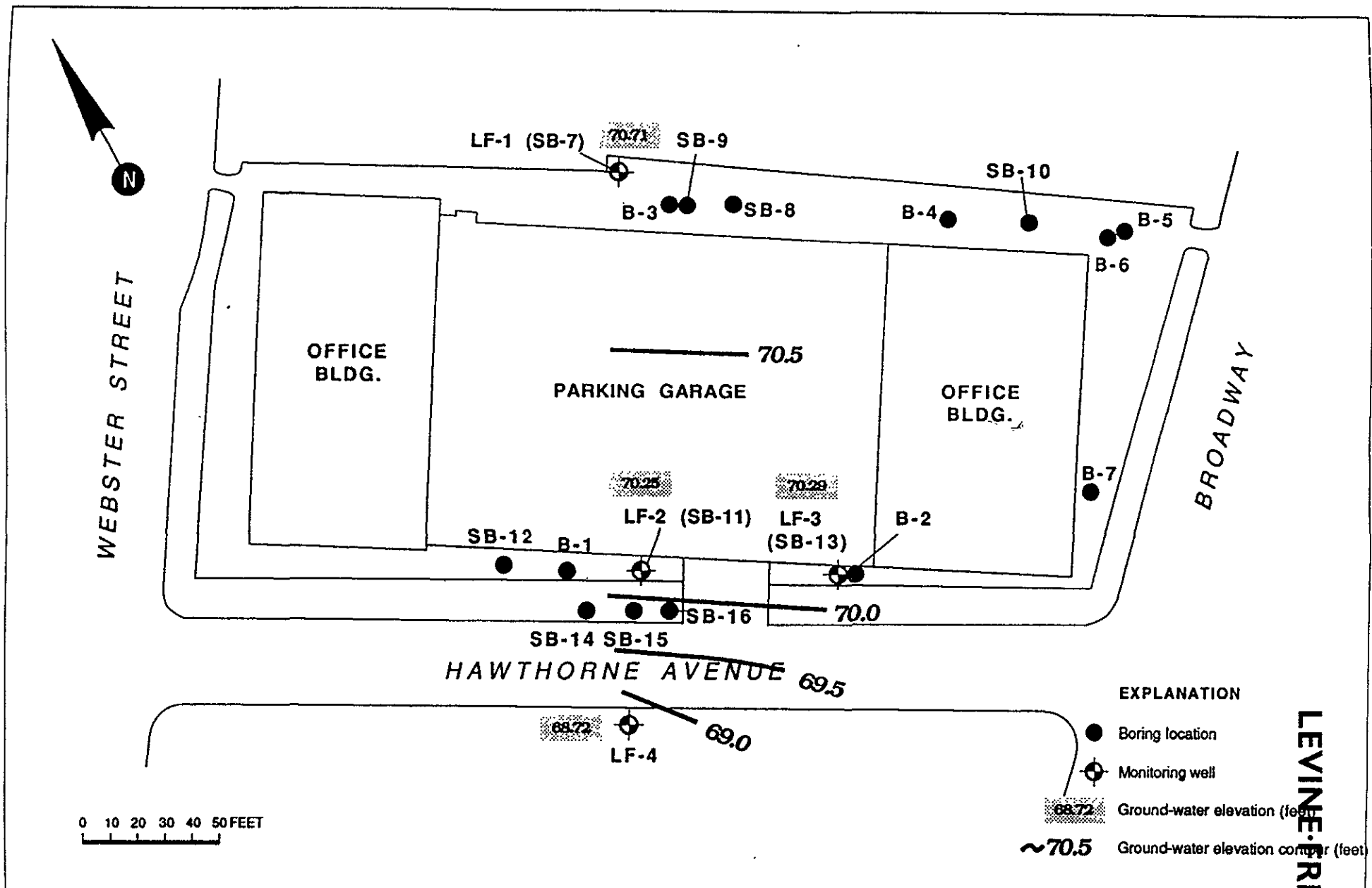


Figure 3 : CONTOURED GROUND-WATER ELEVATIONS, MAY 21, 1991

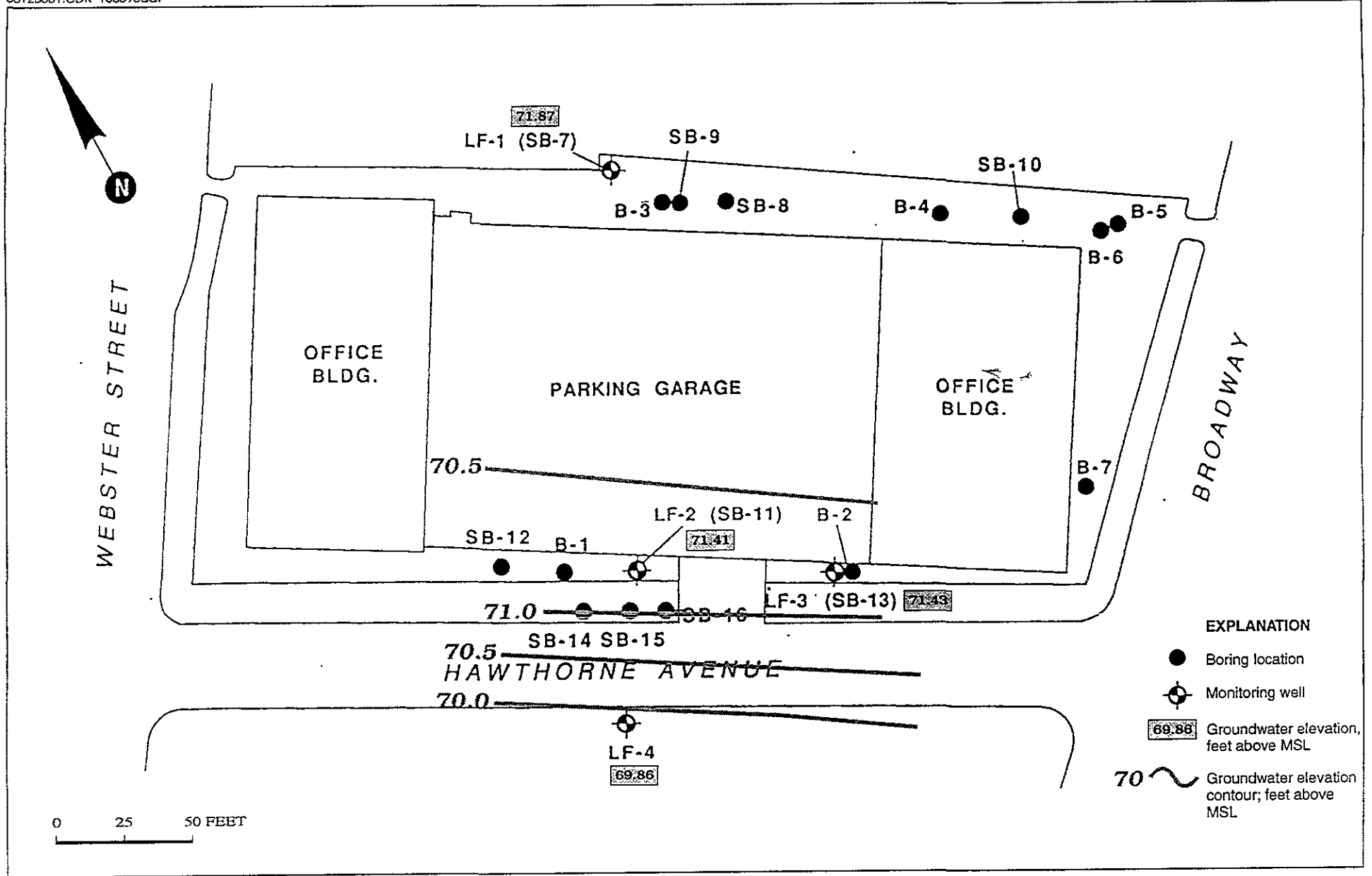
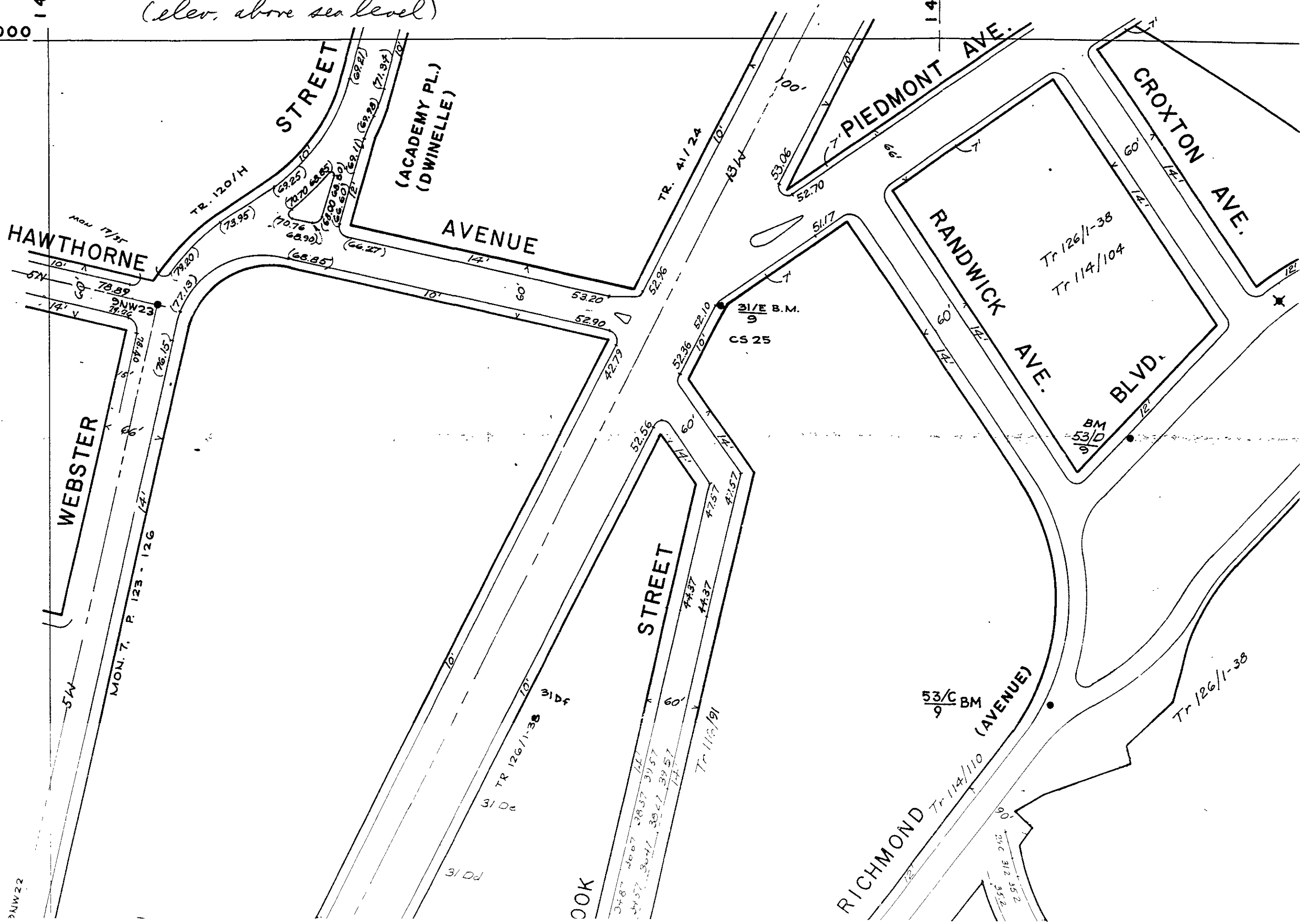


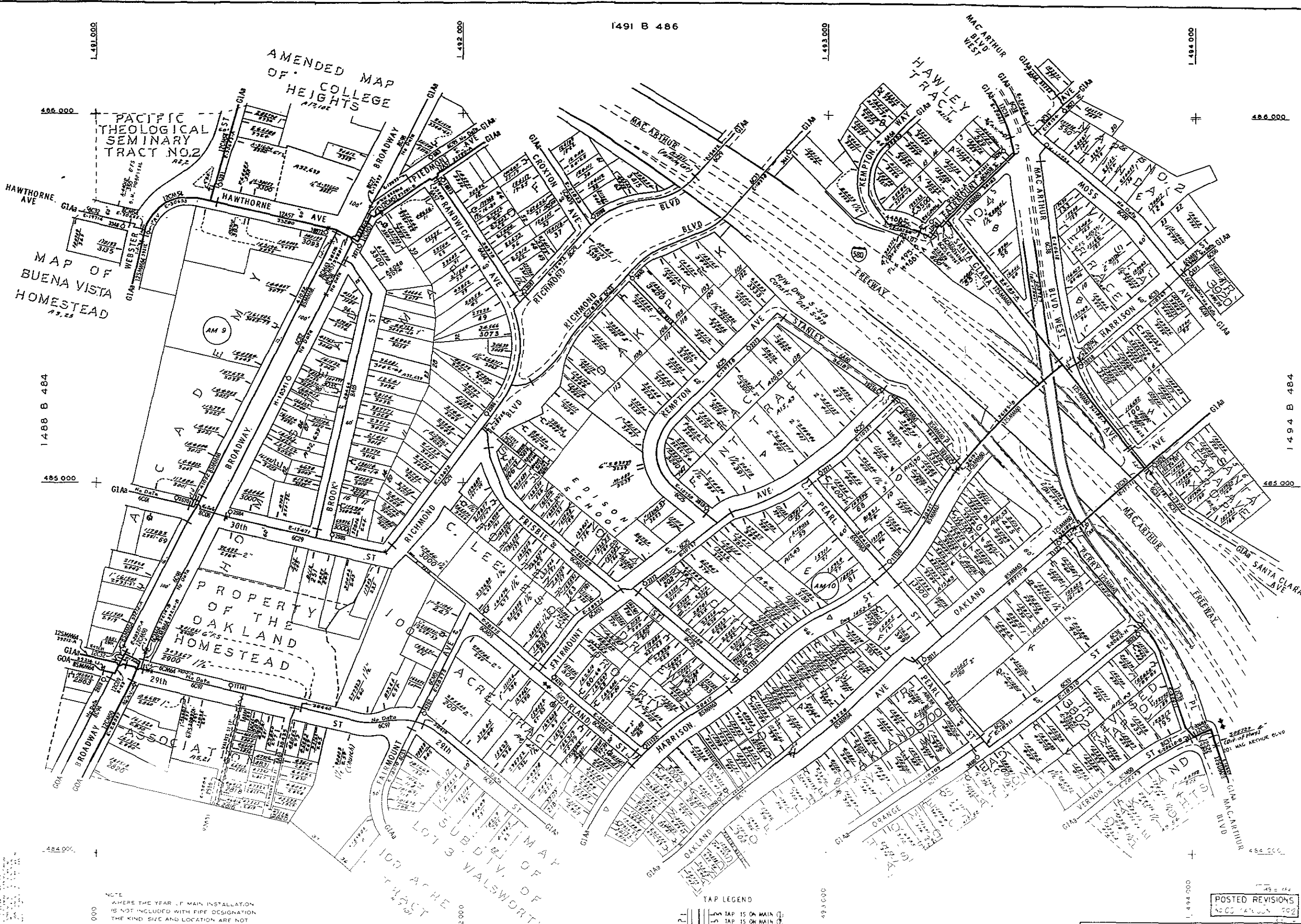
Figure 4 : GROUNDWATER ELEVATIONS, SEPTEMBER 18, 1996

Street Map
 (elev. above sea level)

486 000
 1491 00

1492 0'





MAP OF
BUENA VISTA
HOMESTEAD
19, 23

AMENDED MAP
OF COLLEGE
HEIGHTS
1910

PROPERTY OF THE
OAKLAND
HOMESTEAD

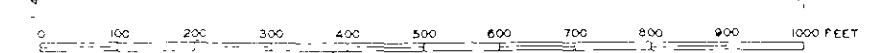
100 ACHÉ TRACT
SUBDIVISION OF
MAP OF WALSORTH

NOTE
WHERE THE YEAR OF MAIN INSTALLATION
IS NOT INCLUDED WITH FIRE DESIGNATION
THE KIND, SIZE AND LOCATION ARE NOT
TO BE RELIED UPON.

TAP LEGEND

- 1-5 TAP IS ON MAIN
- 1-5 TAP IS ON MAIN
- 1-5 TAP IS ON MAIN

1491 B 482
Only those maps on which this layer
appears identify the main tapped.



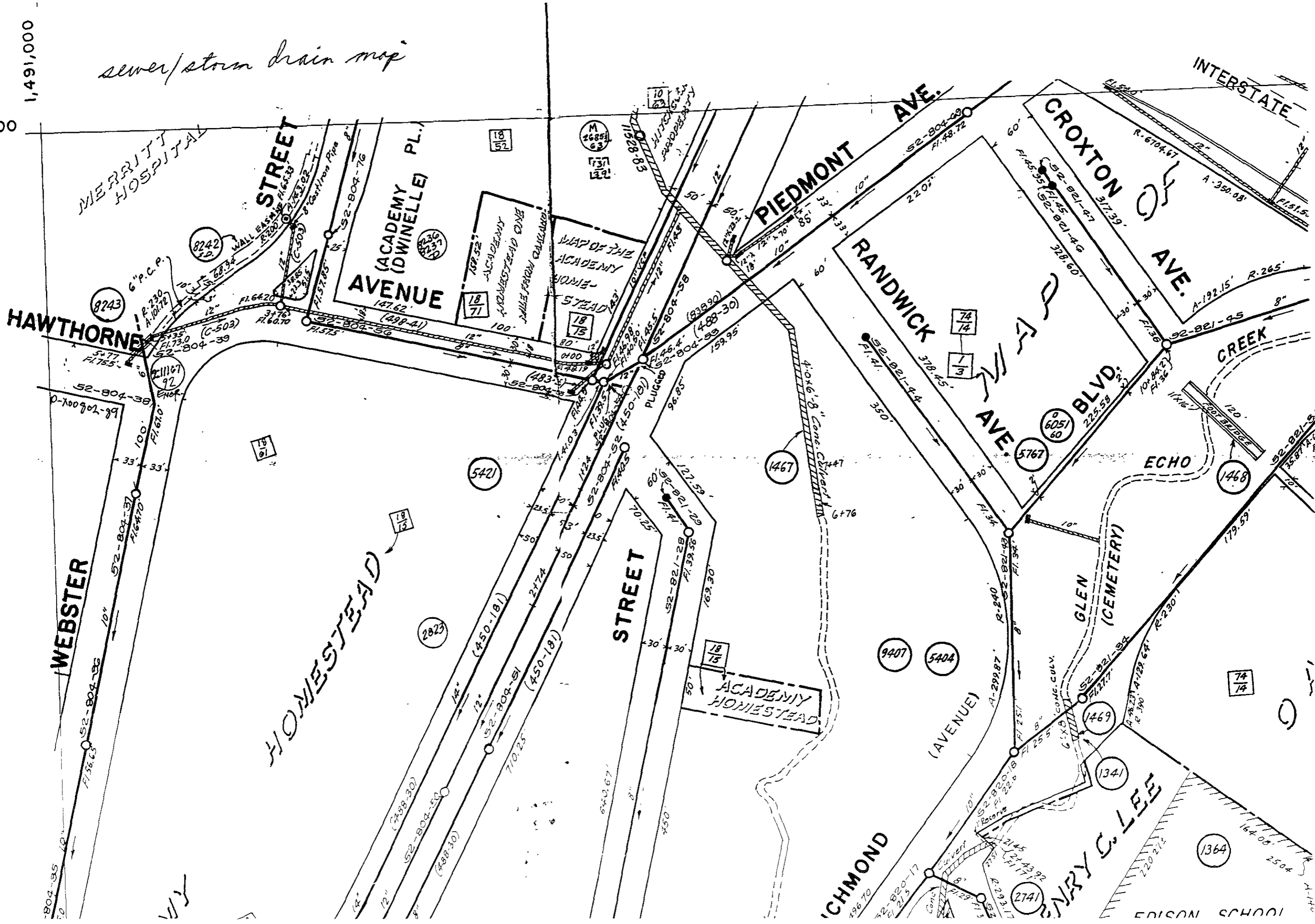
CITY		OAKLAND		STRUCTURE DESIGNATION		NAME		DATE ISSUED		1491 B 484	
COUNTY		ALABAMA		PRESSURE ZONE		CENTRAL		DATE ISSUED		1491 B 484	
USGS OAKLAND WEST				GOA		AGUEDUCT					

POSTED REVISIONS
NO. 001 1491 B 484 202

sewer/storm drain map

1,491,000

486,000



MERRITT HOSPITAL

STREET

ACADEMY (DWINELLE PL.) AVENUE

MAP OF THE ACADEMY HOME STEAD

PIEDMONT AVE.

RANDWICK AVE.

CROXTON AVE.

INTERSTATE

HAWTHORNE STREET

WEBSTER STREET

HOMESTEAD

STREET

ACADEMY HOMESTEAD

BLVD

ECHO CREEK

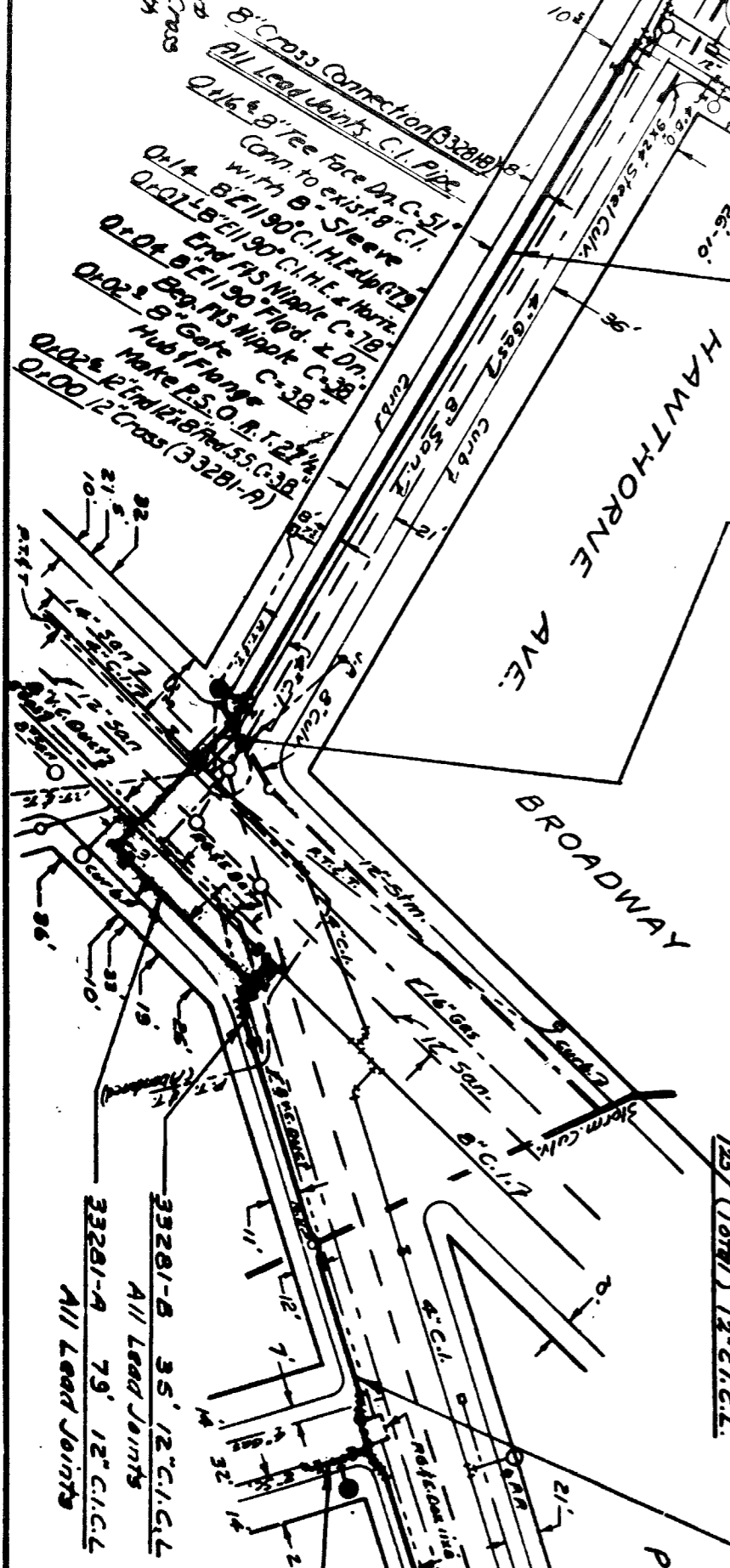
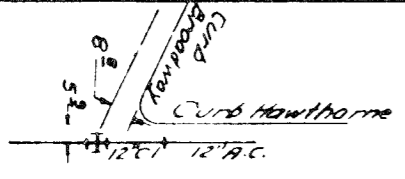
GLEN (CEMETERY)

CHMOND (AVENUE)

EDISON SCHOOL

DATE 1118 1941

NOTE: Marked on curb
return as 7' VIII. Cross
is not at Pk. & with
Broadway.



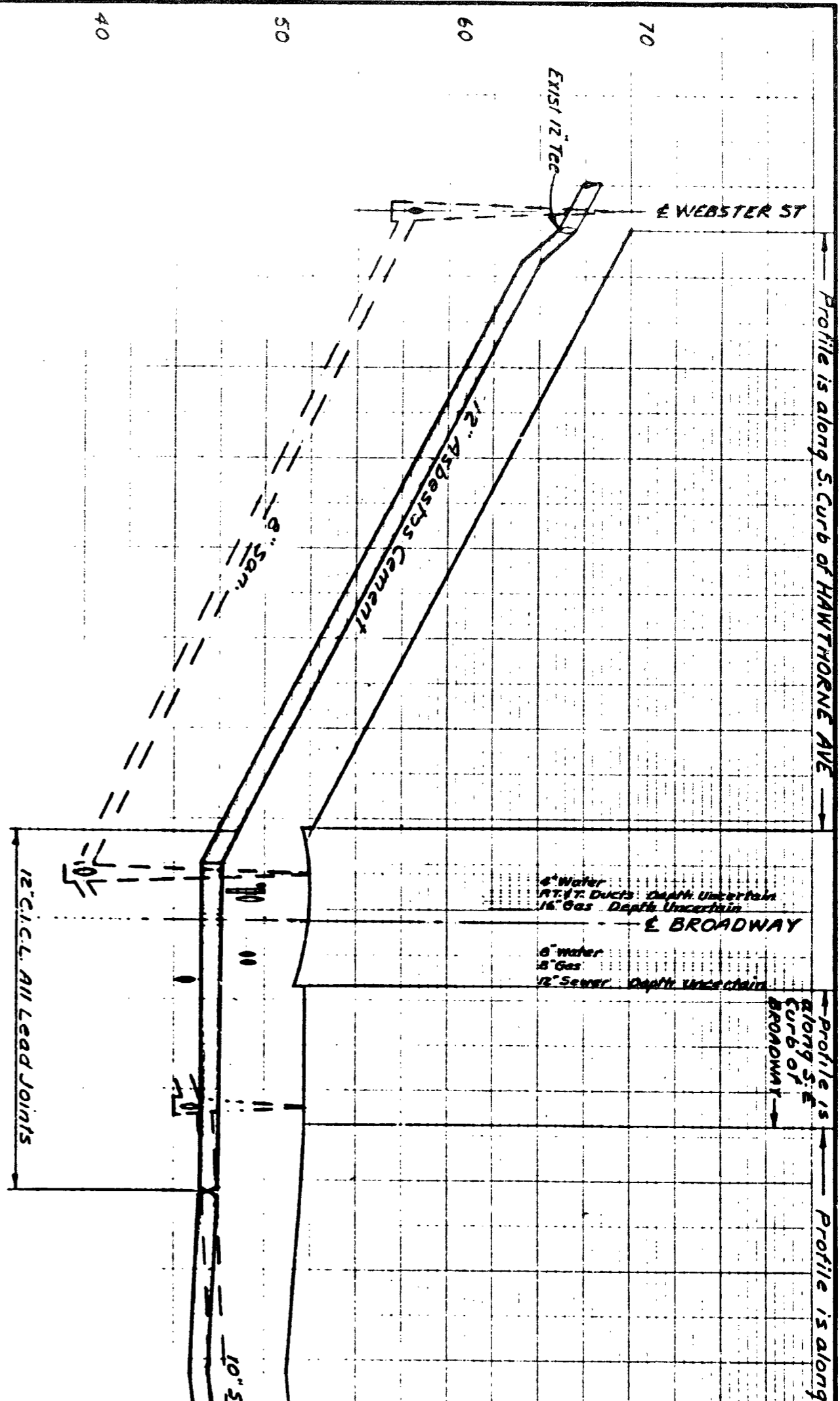
33280
331' 12" Asb. Cem.
0+00 Conn. to exist. 12" Tee (C=48")
0+15' E. 7/8" Webster St.
0+17' 12" Gate C=42"
Make P.S. O.P. T. 40
3+25' 12"x6" Hyd. Tee C=45"
Hyd. Order No. 16972
3+30' 12" Ell 22 1/2" & Dn.
End 12" A.C. (33280)
Beg. 12" C.I. (33281) C=45"

33281
88' 12" C.I.
0+00 12" Ell (Sta. 3+30' - 33280)
0+02' 12" Ell 22 1/2" & Horiz. C=56"
0+04' Storm Drain C=41"
0+12' Street Lights C=31"
14" Sanitary C=6'
0+24' 12"x8" Cross C=65"
Plug both B ends Collars & Rods
(For Location see Detail A)
0+32' 4" C.I. Water C=38"
P.T. & T. C=33"
0+38' Main P.T. & T. C=33"
0+42' 1/6" Gas C.I. C=40"
0+55' 12" Ell 22 1/2" & Dn. C=58"
0+56' P.T. & T. C=25"
12" San. C=82"
0+62' 12" Ell 22 1/2" & Horiz. C=88"

33281-A
79' 12" C.I.C.L.
0+00 12" Tee C=80"
Plug SW end Collars & Rods
0+06' Archbar per Dwg. 851-A
0+08' 12" Ell 11 1/4" & Up C=80"
0+08' 12" Ell 11 1/4" & Horiz. C=43"
0+28' Street Light C=15"
0+56' Street Light C=18"
0+58' P.G.E. Power C=51"
0+78' 12" Cross C=35"
Plug NE Side Collars & Rods

33281-B
2450' (Total) 12" Asb. Cem.
125' (Total) 12" C.I.C.L.

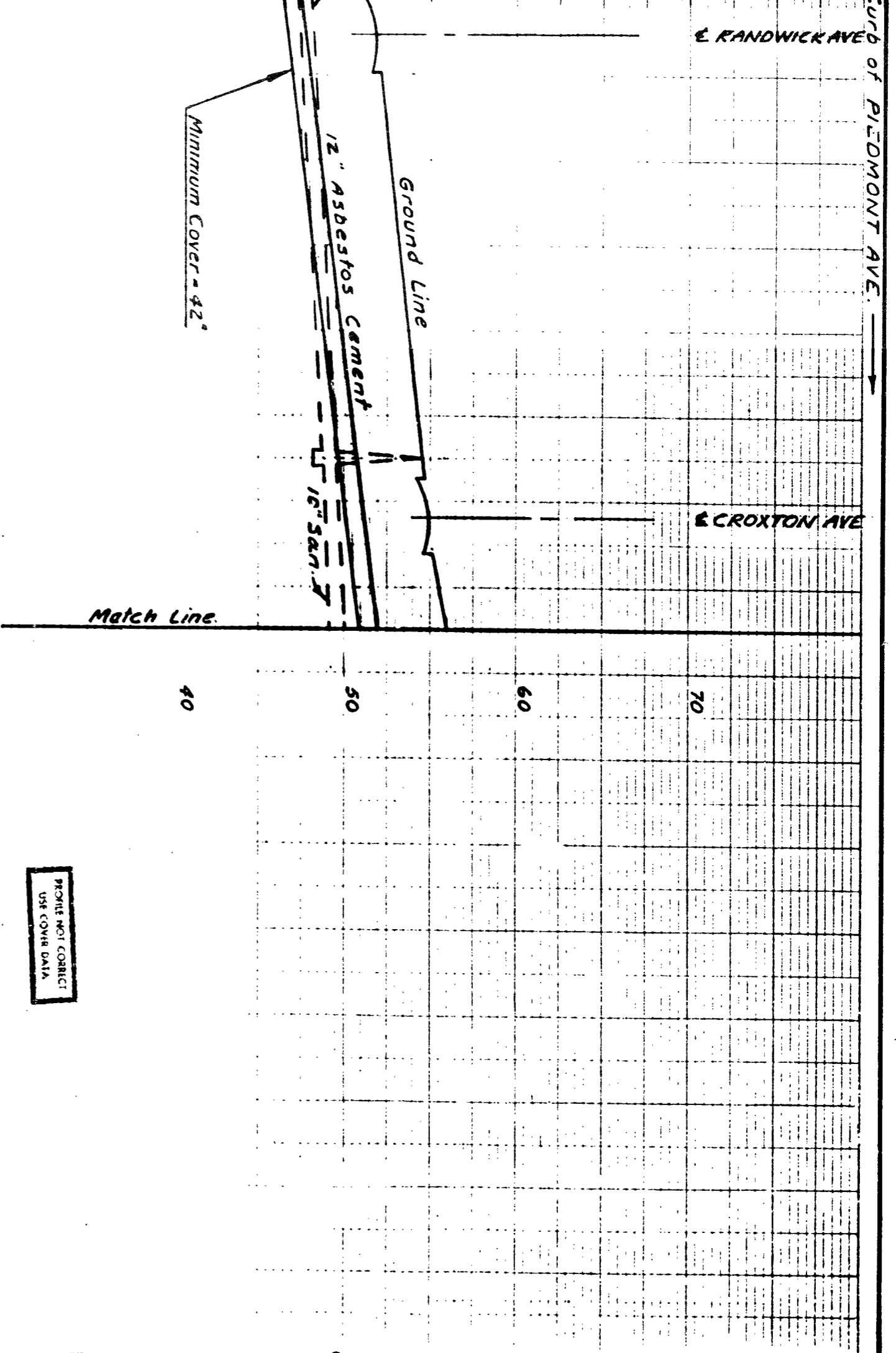
Ground Profile is as shown



Profile is along S. Curb of HAWTHORNE AVE

Profile is along S. Curb of BROADWAY

Profile is along S. Curb of BROADWAY



- Q100 12" Cross (Sta 0+78-33281A)
- Q101 P.G.E. Power C-53"
- Q105 12"E 11 45° C-35"
- Q107 12"E 11 11 1/4° C-35"
- Q118 Signal Light C-19"
- Q135 12" Gate C-41"
- Make P.S. O.R. T.40
- End 12" C.I.C.L.
- Beg 12" A.C.
- 33280-A**
- 2+50-12" AC 125-12" C.I.C.L.
- Q100 12" Gate (Sta 0+35-33281B)
- Q192 M.H. on Storm Drain
- 1127 (2) Traffic Signal C-17"
- 1261 12"E 11 22 1/2° C-48"
- 1266 12"E 11 22 1/2° C-48"
- 1272 12"x6" Tee C-50"
- 1281 12"E 11 22 1/2° C-50"
- 1285 Fire Alarm C-24"
- 1288 12"E 11 22 1/2° C-48"
- 3202 Telephone 1 1/2" Pipe C-18"
- 12" A.C. C-51"
- 4123 2" Gas Main C-16"
- 4137 12"E 11 22 1/2° C-48"
- 4143 12"E 11 22 1/2° C-45"
- 4162 12"x6" Cross C-44"
- Conn to 6" C.I.C.L.
- (See Connection Notes)
- 4163 12"E 11 22 1/2° C-43"
- 4170 12"E 11 22 1/2° C-42"
- 4172 2" Gas
- 4181 E of Croxton Ave.
- 4182 12" Gate C-45"
- Make P.S. O.R. T.40

NOTES:

- 1- Ells 22 1/2 or greater & Tees Anchi
- 2- C.I. Fittings & Valves Bare.
- 3- No 2 Trans. to C.I. Adaptor to be used on 12" Asb. Cem Pipe at fittings.
- 4- Install with 42" Minimum Cover.

- Connection Notes**
- Q109 6" Relayed exist. C.I. to this point
 - Q102 6" Connect to 6" C.I. with 6" Offset C-29"
 - Q102 6" Gate C-47"
 - Q102 6" Offset conn. to 6" C.I.C.L. Make Back O.R. T.20
 - Q102 6" Offset conn. to 6" C.I.C.L. Make Back O.R. T.20
 - Q102 6" Relayed exist. C.I. to this point

- Q100 12"x6" Tee (33280-A)
- Beg. 6" Riser C-51"
- Q103 End 6" Riser C-51"
- Q108 5 1/2" Piedmont Ave. 6" Gate C-51"
- Make Rich O.R. T.20 C-50"
- Q118 6" Hyd. Tee C-50"
- Hyd. Order No. 16979
- Q128 6" 5" Sleeve
- End 6" Asb. Cem.
- Q126 Conn. to 2" S. with Type B Conn. Dog. B.I.C.A. Orders on Street Side Buried with wood

This drawing checked for corrosion control

REVISED - 1-11-57
Alignment Changes

Elevations are to OAKLAND City Datum.

PROTECT NOT CORRECT
USE COVER DATA

Subdiv Title OAKLAND #621

Area AQUEDUCT

Pressure Zone Imp. System 9/8 Size - 33280 & 33281 A-B

Justification Imp. System of Street Improvement (Gaul).

Reference HD-771-A, 90956 & A to H

Paving 33280 - Asphalt/Concrete 1 1/2" A.C. on Concrete Slab. 33281 - 3/4" A.C. on Concrete Slab. 33282 - 1 1/2" A.C. on Concrete Slab. A.C.

Map No H-4-D

Joints Lead Joints at fittings

Make of Pipe Century

Construction By Contract

Contract No 10037

Dwg 1165-A

REVISED AS CONSTRUCTED
Started 1-7-52 in Series 4-17-57
Completed 2-6-57
Checked by E.C.L.
Printed 9-16-57 by L.V.C.

SPECIFICATION NO. 701
SCHEDULE II
SERVICE IMPROVEMENT NO. 2848, 2758.
33280 & A-C, 33281 & A-B, 33282. & A-E

EAST BAY MUNICIPAL UTILITY DISTRICT
OAKLAND, CALIFORNIA

12" ASBESTOS CEMENT MAIN
IN HAWTHORNE AVE. & PIEDMONT AVE.
BETWEEN WEBSTER ST & MONTE VISTA AVE
PIEDMONT

DESIGNED BY W.A. Kelso
DRAWN BY KELSO
CHECKED BY W.A. Kelso
SCALE 1/2" = 50' (1" = 50')

DATE 8-23-56
NO. W-1424-1/3