


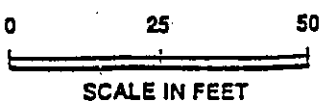



- EXPLANATION**
-  Monitoring well
  -  Soil boring
  -  Proposed monitoring well
  - (70, 0.37) TPH as gasoline and benzene in groundwater (8/30/91) (concentrations in ppb)



	<b>Harding Lawson Associates</b> Engineering and Environmental Services		<b>Site Plan</b> Shell Service Station 5755 Broadway Oakland, California		PLATE <span style="font-size: 2em;"><b>2</b></span>
	DRAWN RHC	JOB NUMBER 4022.218.03	APPROVED <i>RJTB</i>	DATE 10/02/91	REVISED DATE

DRAWING NUMBER 4209-9110

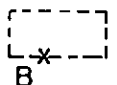
CHECKED BY APPROVED BY

C. Barber 4/23/91

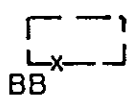
DRAWN BY



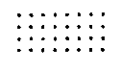
Scale  
0 10 20 Feet



Limits of Soil Excavation  
11/15/91 with Soil  
Sample Location



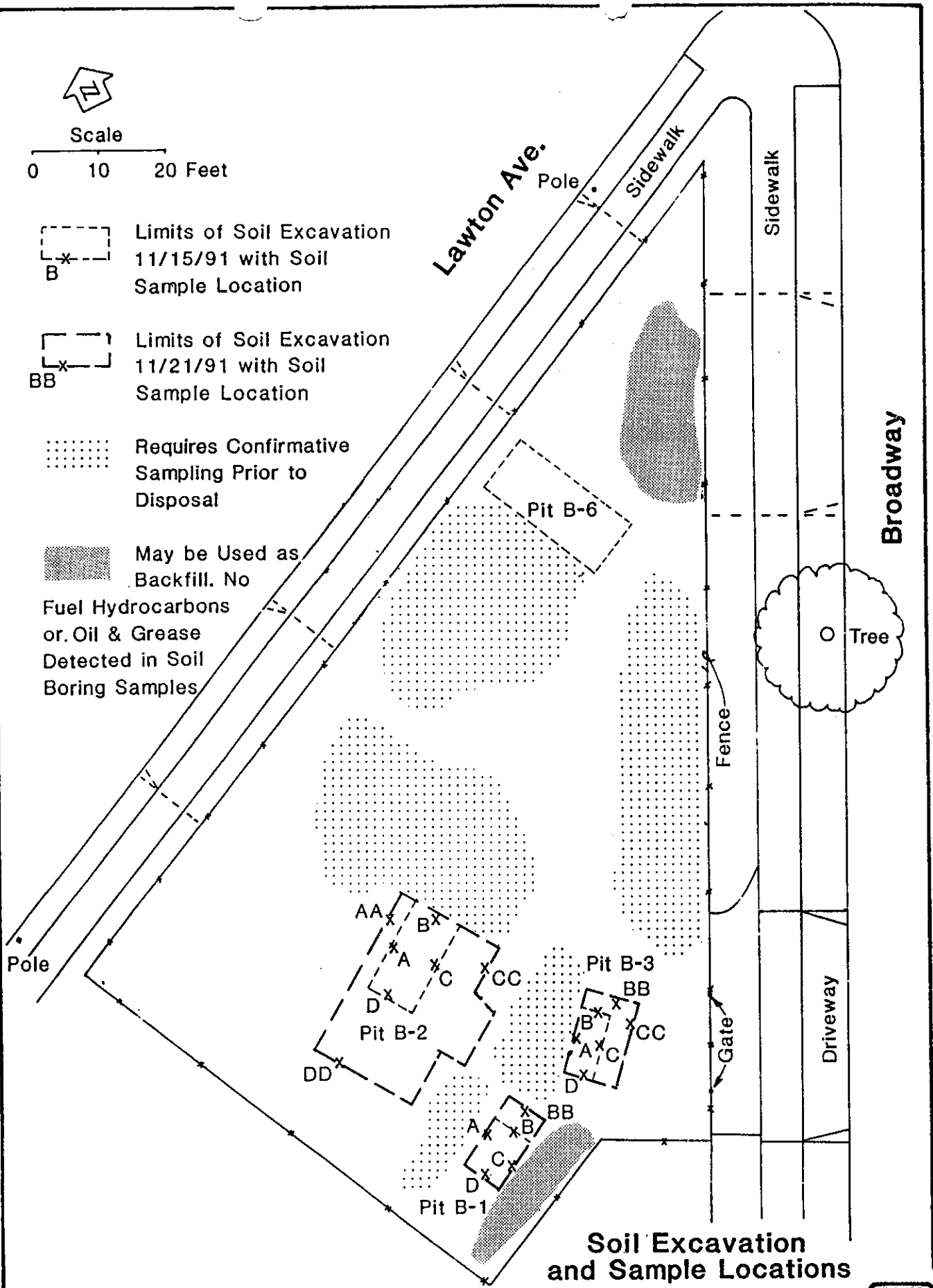
Limits of Soil Excavation  
11/21/91 with Soil  
Sample Location



Requires Confirmative  
Sampling Prior to  
Disposal



May be Used as  
Backfill. No  
Fuel Hydrocarbons  
or Oil & Grease  
Detected in Soil  
Boring Samples

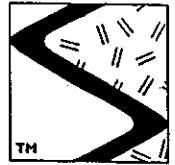


### Soil Excavation and Sample Locations

Broadway at Lawton  
Oakland, CA

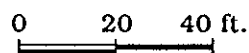
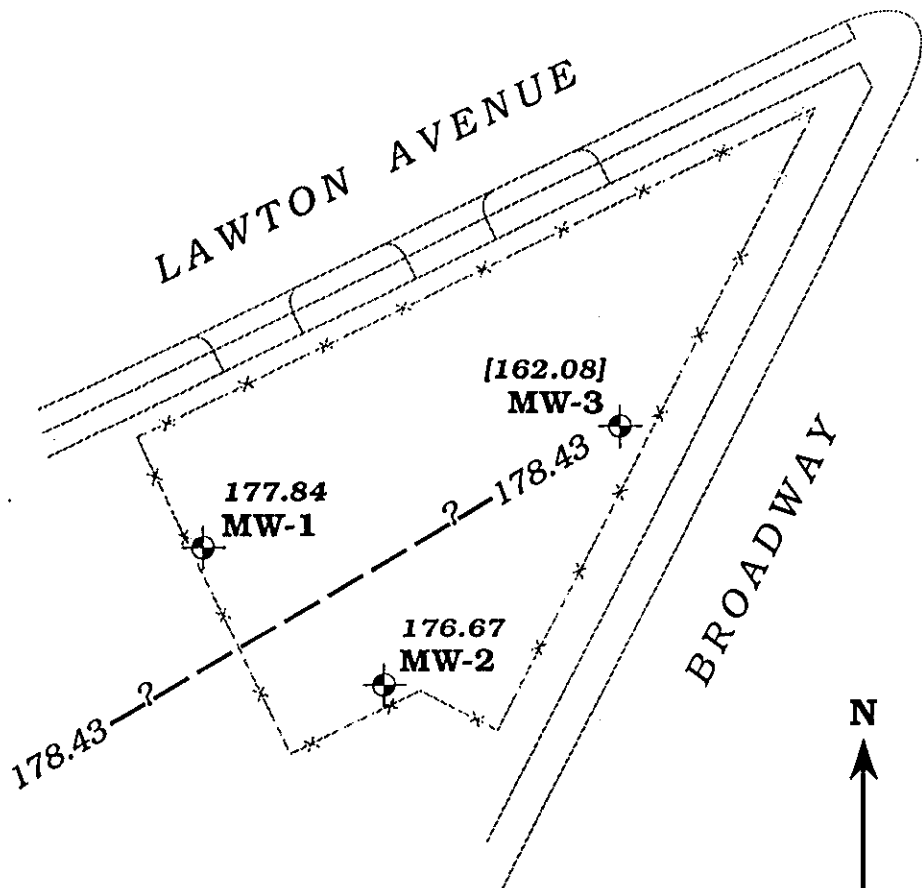


**RIEDEL ENVIRONMENTAL SERVICES, INC.** Richmond, California



SIERRA

Approximate  
ground water  
flow direction



not measured  
**SHELL-3**



**EXPLANATION**


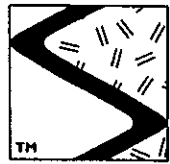
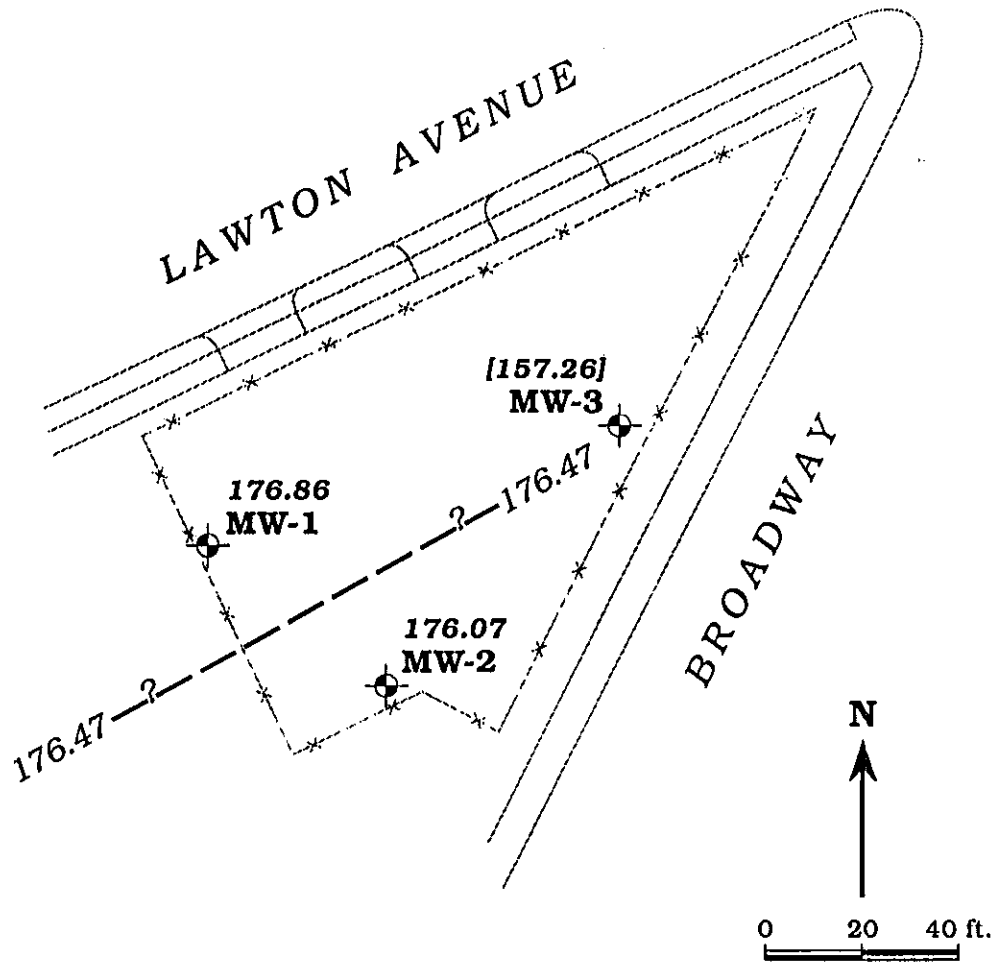
-  **MW-3** Monitoring well
- 176.67** Ground water elevation, in feet
- [162.08]** Ground water elevation not used in contouring
- 178.43** Ground water elevation contour, dashed where inferred, queried where uncertain

Figure 2. Monitoring Well Locations and Ground Water Elevation Contour Map - January 11, 1995 - Former Chevron Service Station #9-3575, 5775 Broadway, Oakland, California



SIERRA

Approximate  
ground water  
flow direction  
(historic)



not measured  
**SHELL-3**



**EXPLANATION**


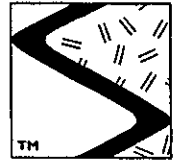
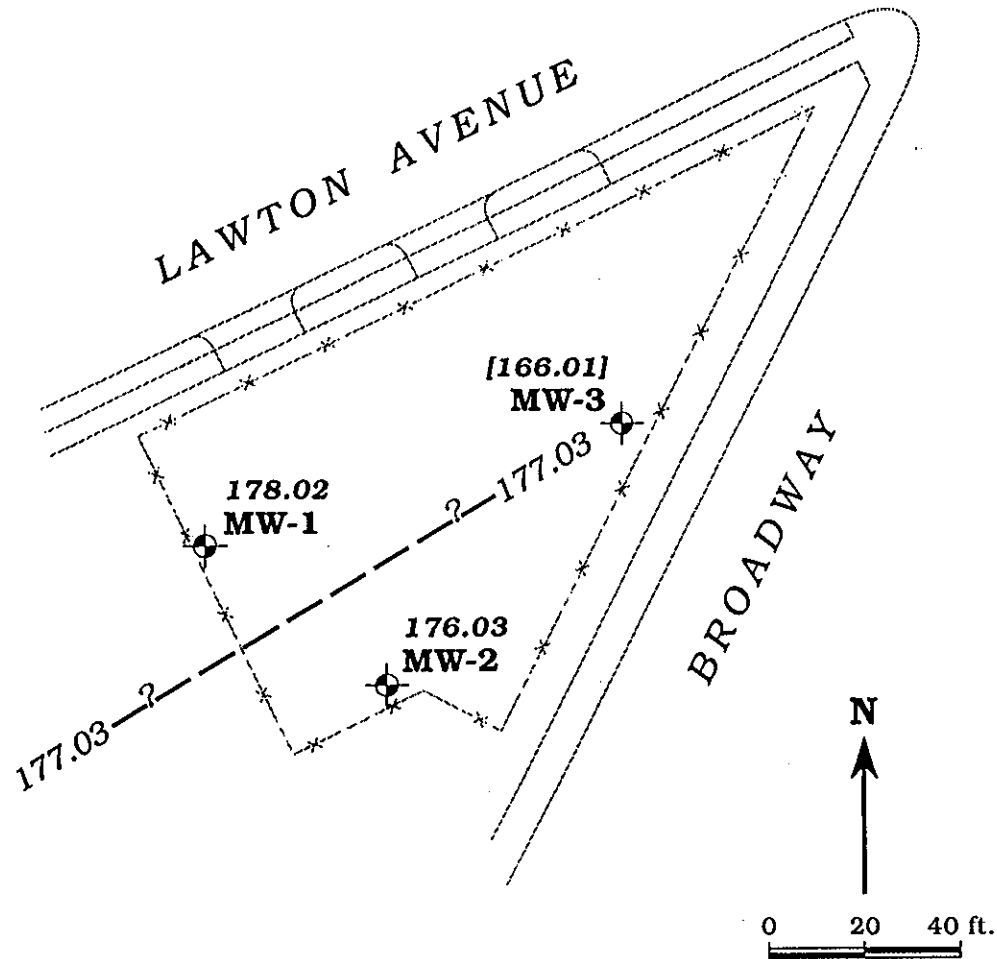
-  **MW-3** Monitoring well
- 176.86** Ground water elevation, in feet
- [157.26]** Ground water elevation not used in contouring
- 176.47** Ground water elevation contour, dashed where inferred, queried where uncertain


Figure 1. Monitoring Well Locations and Ground Water Elevation Contour Map - December 6, 1994 - Former Chevron Service Station #9-3575, 5775 Broadway, Oakland, California



SIERRA

Approximate  
ground water  
flow direction  
(Historic)



not measured  
SHELL-3  



<u>EXPLANATION</u>	
 MW-3	Monitoring well
176.03	Ground water elevation, in feet
[166.01]	Ground water elevation not used in contouring
- 177.03	Ground water elevation contour, dashed where inferred, queried where uncertain

Figure 3. Monitoring Well Locations and Ground Water Elevation Contour Map - February 3, 1995 - Former Chevron Service Station #9-3575, 5775 Broadway, Oakland, California





Table 1. Water Level Data and Ground Water Analytic Results - Former Chevron Service Station #9-3575, 5775 Broadway, Oakland, California (continued)

Well ID/ TOC (ft)	Date	DTW (ft)	GWE (msl)	Product Thickness* (ft)	Analytic Method	TPPH(G) ←	O&G	B	T	ppb			HVOCs	M
										E	X			
MW-2	4/29/93	14.77	175.05	0	---	---	---	---	---	---	---	---	---	---
(cont)	5/21/93	15.59	174.23	0	8015/8020	<50	---	0.6	2	<0.5	2	---	---	---
	6/7/93	15.45	174.37	0	---	---	---	---	---	---	---	---	---	---
	7/14/93	15.79	174.03	0	---	---	---	---	---	---	---	---	---	---
	8/3/93	16.45	173.37	0	8015/8020	87	---	2	5	0.8	5	---	---	---
	9/2/93	16.57	173.25	0	---	---	---	---	---	---	---	---	---	---
	9/28/93	---	---	---	413.2	---	<5,000	---	---	---	---	---	---	---
	10/11/93	17.26	172.56	0	---	---	---	---	---	---	---	---	---	---
	11/2/93	17.05	172.77	0	8015/8020/413.2	<50	<5,000	3	5	2	9	---	---	---
	12/6/93	16.34	173.48	0	---	---	---	---	---	---	---	---	---	---
	1/10/94	15.61	174.21	0	---	---	---	---	---	---	---	---	---	---
	2/1/94	15.06	174.76	0	8015/8020/413.2	<50	<5,000	<0.5	<0.5	<0.5	1	---	---	---
	3/2/94	13.87	175.95	0	---	---	---	---	---	---	---	---	---	---
	4/6/94	15.42	174.40	0	---	---	---	---	---	---	---	---	---	---
	5/4/94	14.74	175.08	0	8015/8020/413.1	<50	<5,000	<0.5	<0.5	<0.5	<0.5	---	---	---
	6/3/94	15.12	174.70	0	---	---	---	---	---	---	---	---	---	---
	7/11/94	15.66	174.16	0	---	---	---	---	---	---	---	---	---	---
	8/3/94	15.52	174.30	0	8015/8020/413.1	<50	<5,000	2.1	5.5	2.2	11	---	---	---
	9/7/94	16.10	173.72	0	---	---	---	---	---	---	---	---	---	---
	10/12/94	16.73	173.09	0	---	---	---	---	---	---	---	---	---	---
	11/3/94	16.89	172.93	0	8015/8020/413.1	<50	<5,000	<0.5	<0.5	<0.5	<0.5	---	---	---
	12/6/94	13.75	176.55	0	---	---	---	---	---	---	---	---	---	---
	1/11/95	13.15	176.67	0	---	---	---	---	---	---	---	---	---	---
	2/3/95	13.79	176.03	0	8015/8020/413.1	<50	<5,000	<0.5	<0.5	<0.5	<0.5	---	---	---
MW-3/ 189.05	11/10/92	33.37	155.68	---	8015/8020/5520F/8010	53	<5,000	1.7	0.6	<0.5	0.8	ND	---	---
	11/25/92	---	---	---	---	<50	<5,000	<0.5	<0.5	<0.5	<0.5	---	---	---
	12/18/92	40.45	148.60	0	---	---	---	---	---	---	---	---	---	---
	1/20/93	33.73	155.32	0	---	---	---	---	---	---	---	---	---	---
	2/16/93	28.34	160.71	0	8015/8020	<50	---	<0.5	<0.5	<0.5	<0.5	---	---	---
	3/16/93	30.11	158.94	0	---	---	---	---	---	---	---	---	---	---
	3/30/93	27.65	161.40	0	6010	---	---	---	---	---	---	---	---	ND <sup>3</sup>
	4/29/93	22.03	167.02	0	---	---	---	---	---	---	---	---	---	---
	5/21/93	18.68	170.37	0	8015/8020	<50	---	0.7	<0.5	<0.5	0.5	---	---	---
	6/7/93	25.60	163.45	0	---	---	---	---	---	---	---	---	---	---
	7/14/93	29.45	159.60	0	---	---	---	---	---	---	---	---	---	---
	8/3/93	28.93	160.12	0	8015/8020	65	---	1	2	0.6	6	---	---	---







Scale

0 10 20 Feet

DRAWING  
NUMBER

CHECKED BY  
APPROVED BY

DRAWN  
BY

⊕ Proposed Monitoring Well Locations

Lawton Ave.

Broadway

Proposed  
Condominiums

MW1

MW3

MW2

Site Map with Proposed  
Monitoring Well Locations  
5775 Broadway, Oakland



RIEDEL ENVIRONMENTAL  
SERVICES, INC. Richmond, California

FIGURE  
1