



Riedel Environmental Services, Inc.

4138 Lakeside Drive, Richmond, CA 94806

Phone: (510) 222-7810

Fax: (510) 222-6868

FACSIMILE TRANSMISSION COVER SHEET

Date: 2/26/92

Number of Pages: 3

Attention: Susan Hugo

From: Gail Jones

Location: ACHA

Our Job Number: 4209-9110

Fax Number: 510 569-4757

Reference: 5775 Broadway
in Oakland

Special Instructions/ Message: 2 Maps

1. Proposed well locations
2. Map showing excavation location, image of Shell well S3, and other well location possibilities for the sake of discussion

I will telephone you at 2:00 pm today.

Thanks
Gail



THE COMPLETE ENVIRONMENTAL SERVICES CONTRACTOR

**24-Hour Emergency Response Hotline
(800) 334-0004**

"Imagineering a Cleaner World"

If all pages are not received, or if copies are illegible, please contact RES at (510) 222-7810. Thank You.

G. Jones 2/26/92



Scale

0 10 20 Feet

DRAWING NUMBER
CHECKED BY
APPROVED BY
DRAWN BY

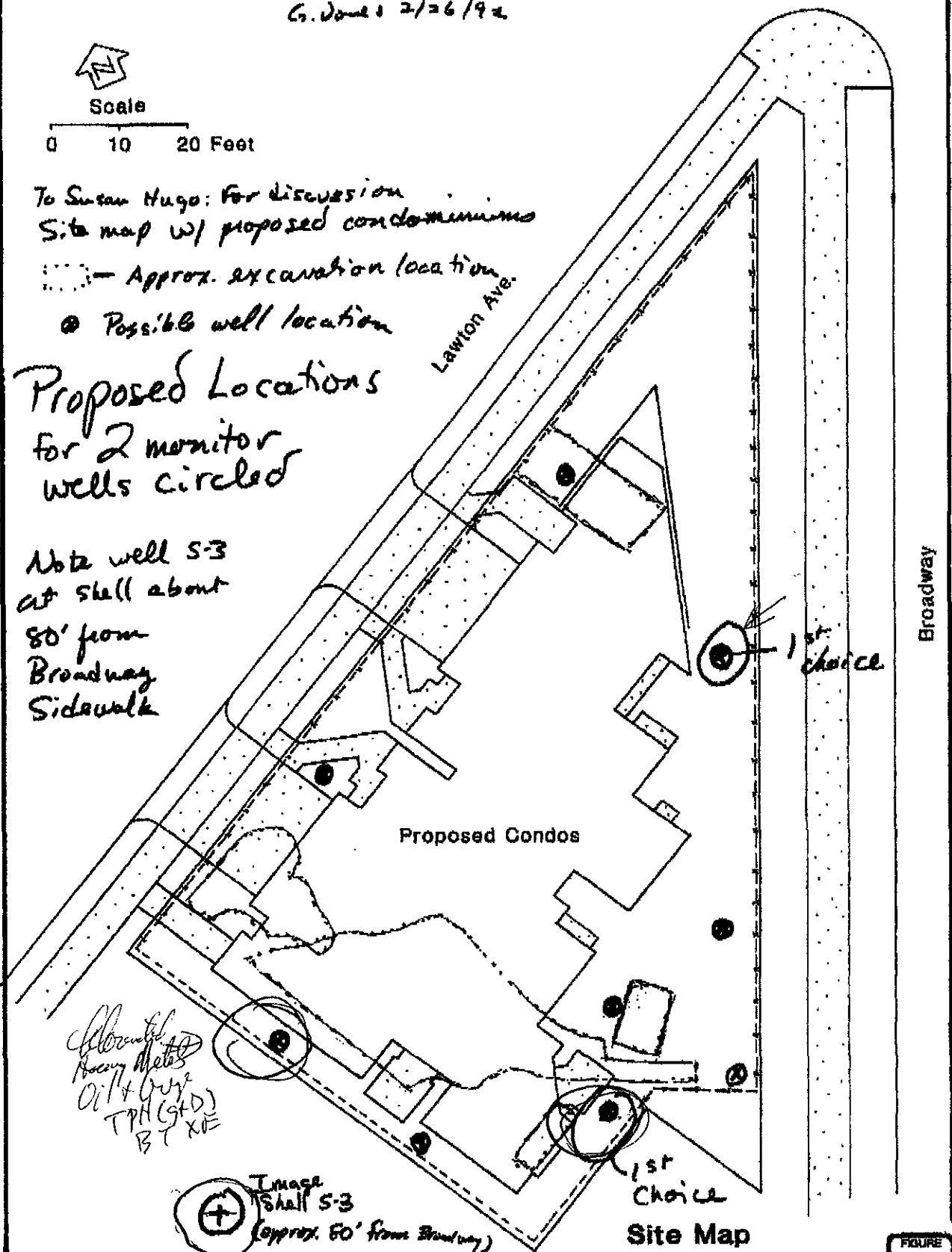
To Susan Hugo: for discussion
Site map w/ proposed condominiums

--- Approx. excavation location

● Possible well location

Proposed Locations
for 2 monitor
wells circled

Note well S-3
at shell about
80' from
Broadway
Sidewalk



Aluminum
Heavy Metals
Oil & Grease
TPH (SLD)
BT XIE

Image Shell S-3
(approx. 80' from Broadway)

1st
Choice

Site Map

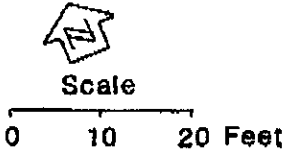


RIEDEL ENVIRONMENTAL
SERVICES, INC. Richmond, California

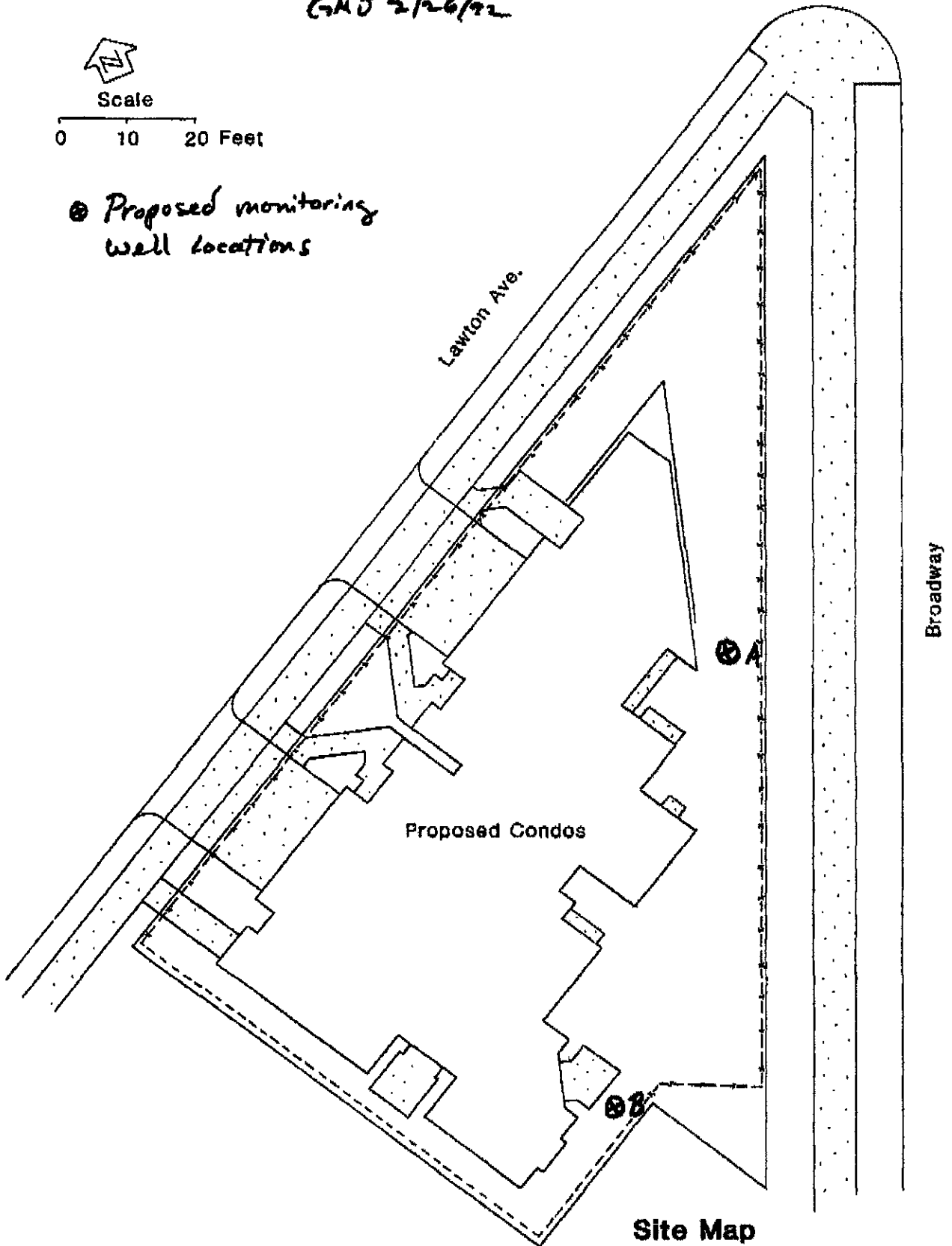
Broadway/Lawton Condos

FIGURE

GMJ 2/26/92



⊗ Proposed monitoring well locations



Site Map
Broadway/Lawton Condos
5775 Broadway

COMMON DIV
5837 5837

LAMP HOLE
191.28 RIM
186.57 E

JOINT POLE
190.02

190.45 RIM
MANHOLE
190.30 TC (P&E)

HOUSE # 5837 LAWTON

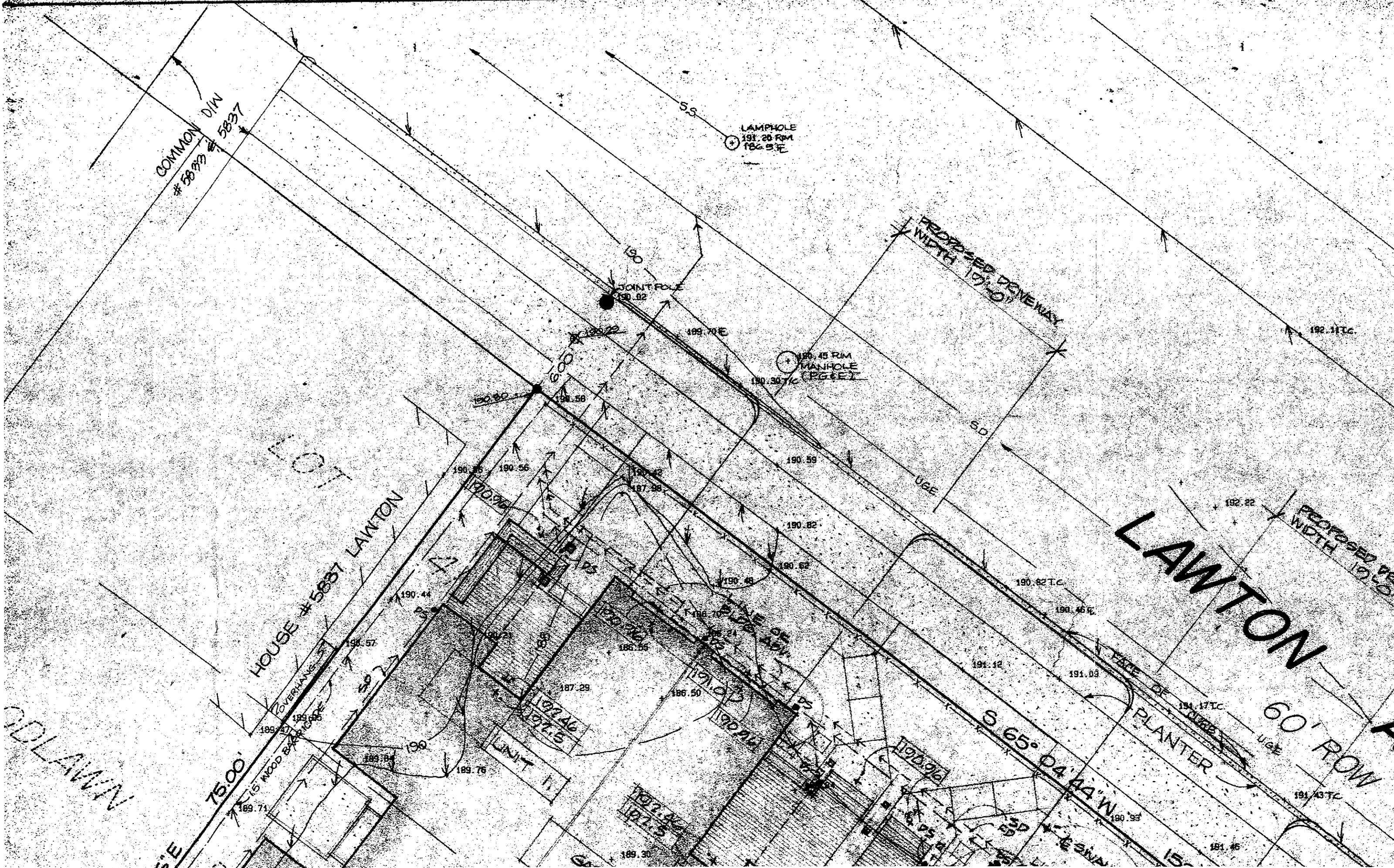
LAWTON

75.00'

S 65° 04' 44" W

60' ROW

ADLAWN





**BROADWAY/
LAWTON
COMMONS**

**CORNER OF:
BROADWAY & LAWTON AVE
OAKLAND, CALIFORNIA**

D
ROBERT C. DAVIDSON
ARCHITECT A.I.A. & ASSOCIATES
5767 BROADWAY
OAKLAND, CALIFORNIA 94612
415-658-7010

BOUNDARY & TOPOGRAPHIC SURVEY

A PORTION OF LOTS 41 AND 42

MAP OF WOODLAWN PARK

CITY OF OAKLAND, COUNTY OF ALAMEDA, STATE OF CALIFORNIA

SCALE 1" = 8 FT. MAY 1990

MORAN ENGINEERING

463 KENTUCKY AVE.

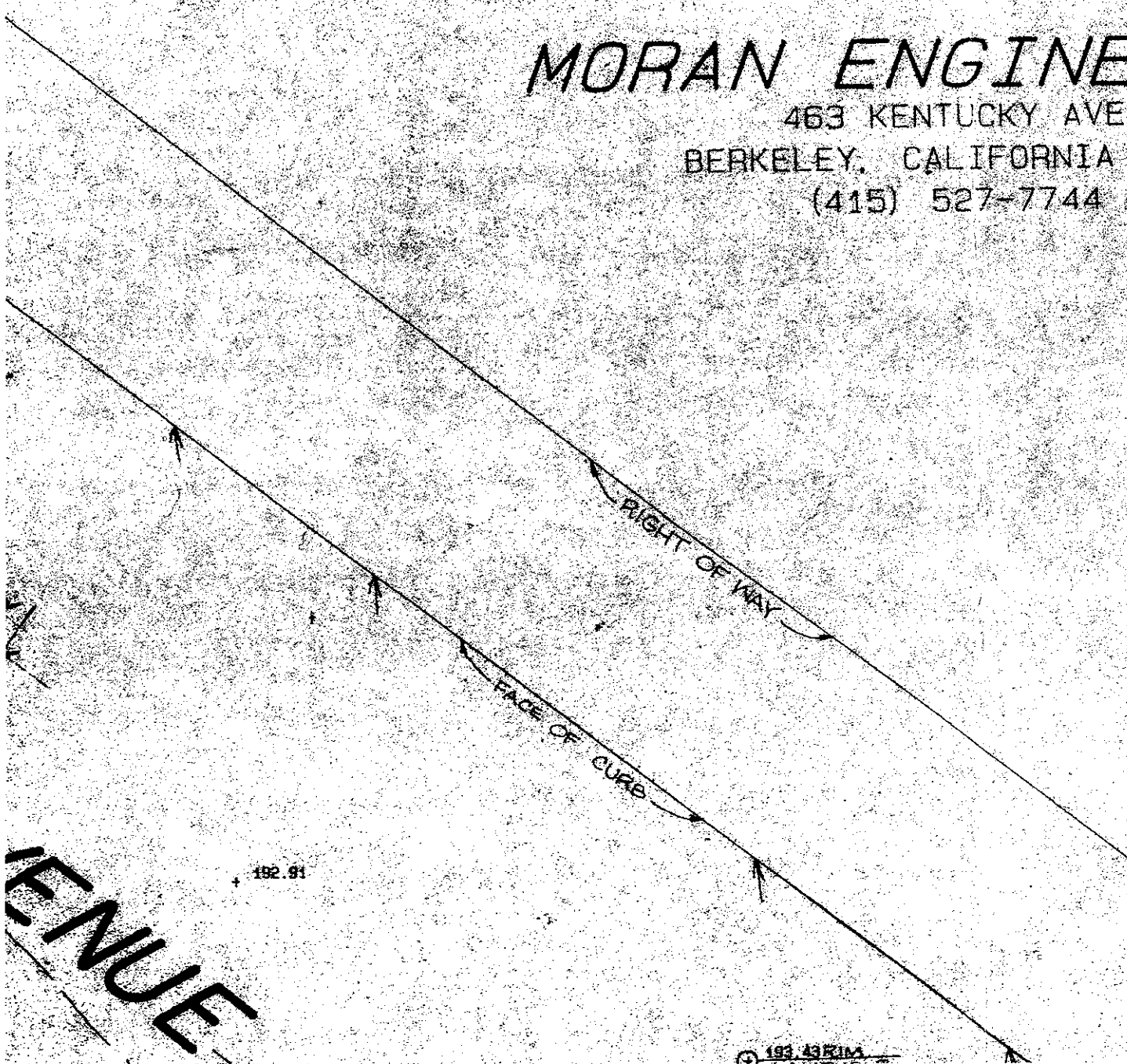
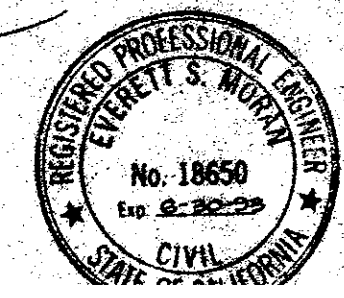
BERKELEY, CALIFORNIA 94707

(415) 527-7744

SURVEYOR'S CERTIFICATE: THIS MAP CORRECTLY REPRESENTS
A SURVEY MADE BY ME OR UNDER MY DIRECTION IN CONFORMANCE
WITH THE REQUIREMENTS OF THE LAND SURVEYOR'S ACT AT THE
REQUEST OF AL KNOLL ON MAY 25
1990.

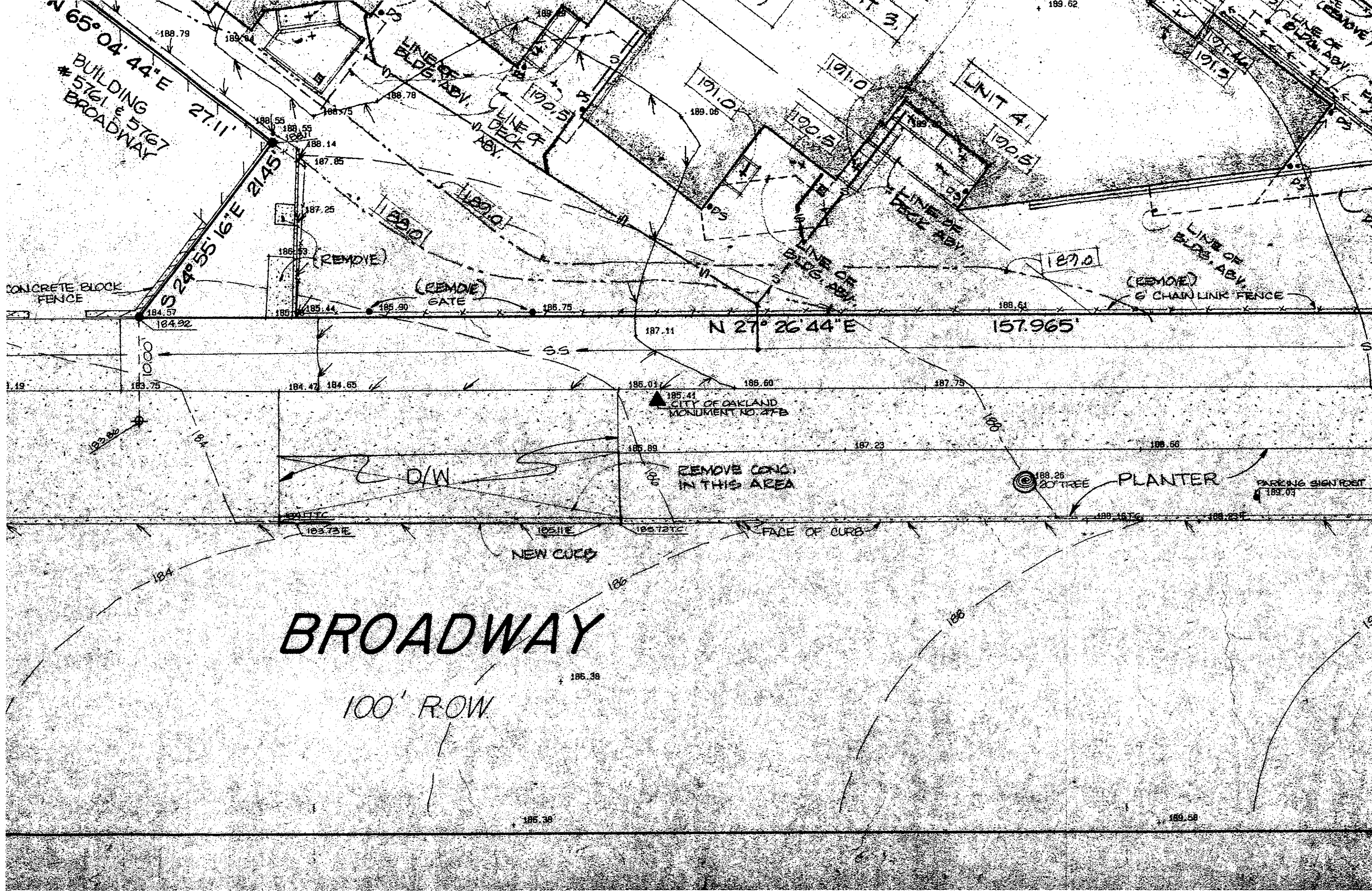
I HEREBY STATE THAT ALL PROVISIONS OF APPLICABLE STATE
LAWS AND LOCAL ORDINANCES HAVE BEEN COMPLIED WITH.

I FURTHER STATE THAT THE PARCEL DELINEATED UPON THIS
SURVEY IS THE SAME AS THAT SHOWN ON THE CURRENT EQUAL
COUNTY ASSESSMENT ROLL \times AS A UNIT.
— AS CONTIGUOUS UNITS.



192.91

193 43RIM



N 65° 04' 44" E
BUILDING # 5761 & BROADWAY

S 24° 55' 16" E 214.5'

LINE OF BLDG. ABV.
LINE OF DECK ABV.
LINE OF BLDG. ABV.
LINE OF DECK ABV.
LINE OF BLDG. ABV.
LINE OF DECK ABV.

UNIT A

CONCRETE BLOCK FENCE

(REMOVE) GATE

(REMOVE) CHAIN LINK FENCE

N 27° 26' 44" E 157.965'

185.44
CITY OF OAKLAND
MONUMENT NO. 27B

REMOVE CONG. IN THIS AREA

188.26
20' TREE

PLANTER

PARKING SIGN POST

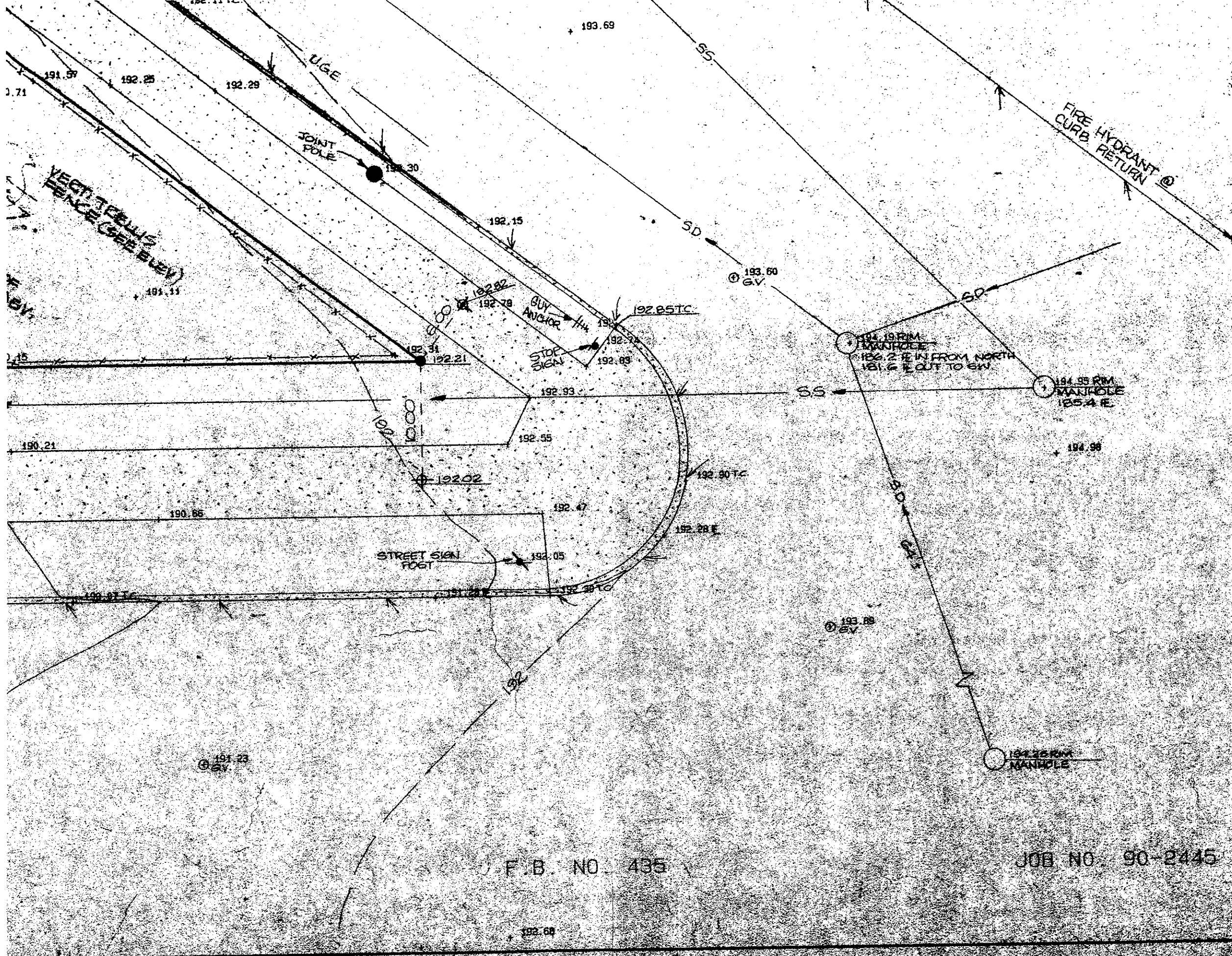
BROADWAY

100' ROW

NEW CURB

FACE OF CURB

D/W



Robert Davis, C.S. 5074

DRAWING CONTENT:
PLOT PLAN

SCALE: 1/8" = 1'-0"

REVISIONS:

JOB NUMBER:
DRAWN:
CHECKED:
SHEET NUMBER:

1

F.B. NO. 435

JOB NO. 90-2445

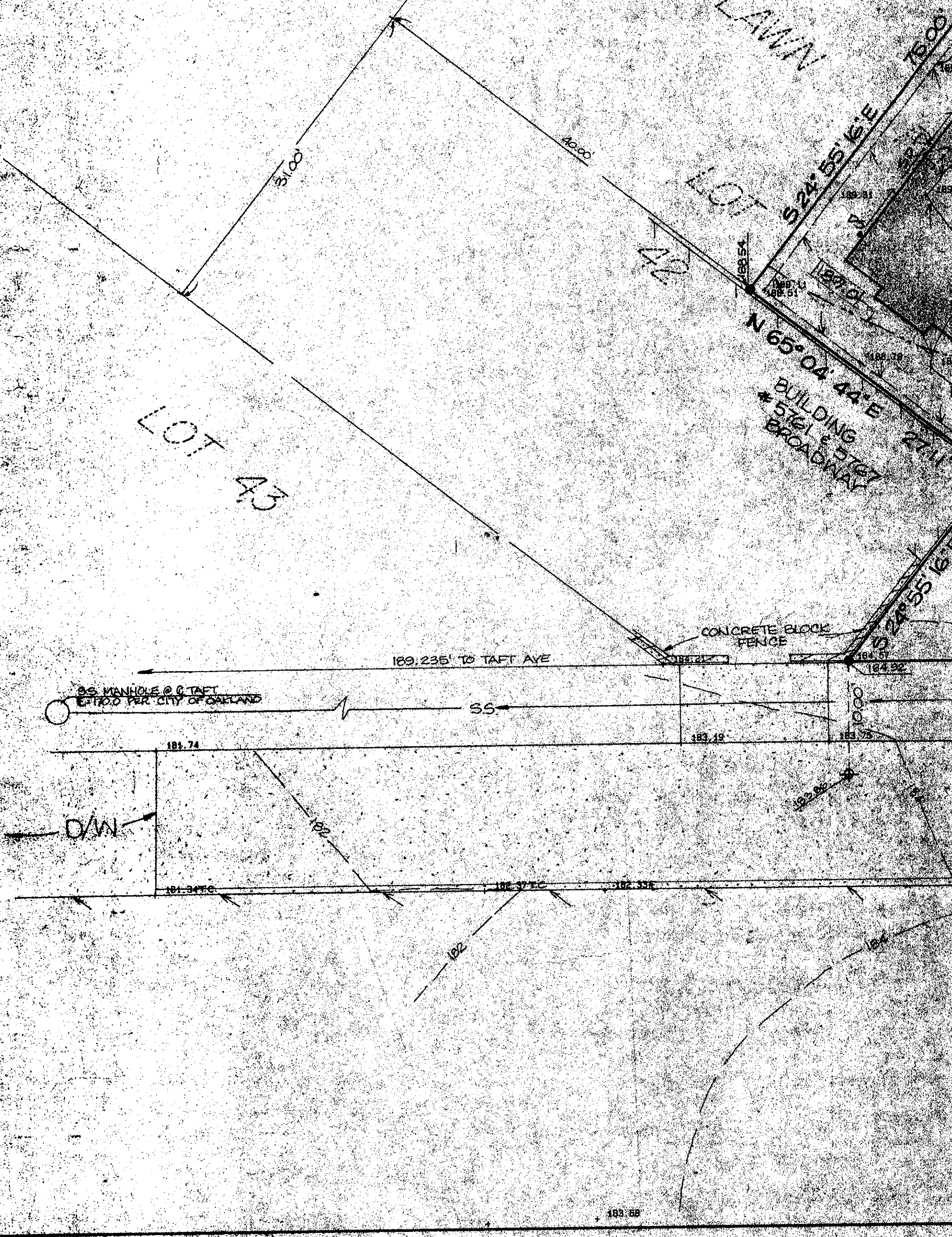
DATE: 7 AUG. 1990

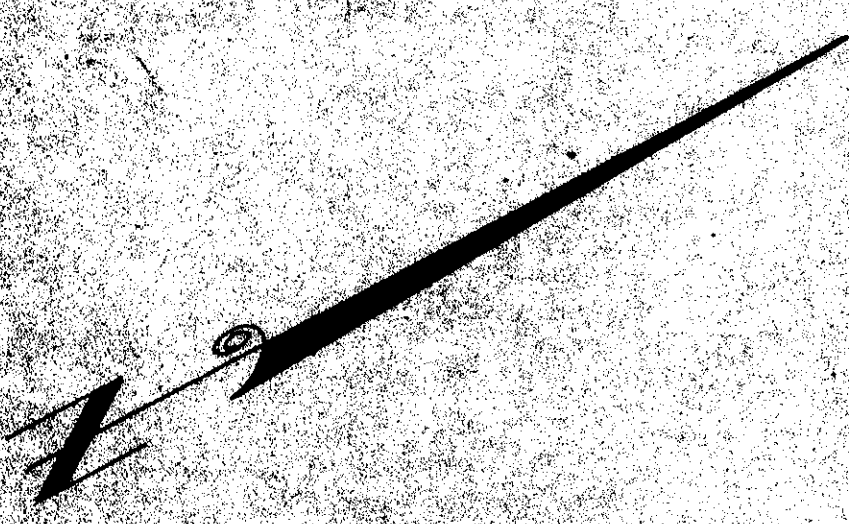


FL	FLOWLINE
SS	SANITARY SEWER
SD	STORM DRAIN
U.E.	UNDERGROUND ELECTRIC
D/W	DRIVEWAY
GV	GAS VALVE

ALL GRADES AND CONTOURS BASED ON CITY OF OAKLAND DATUM.

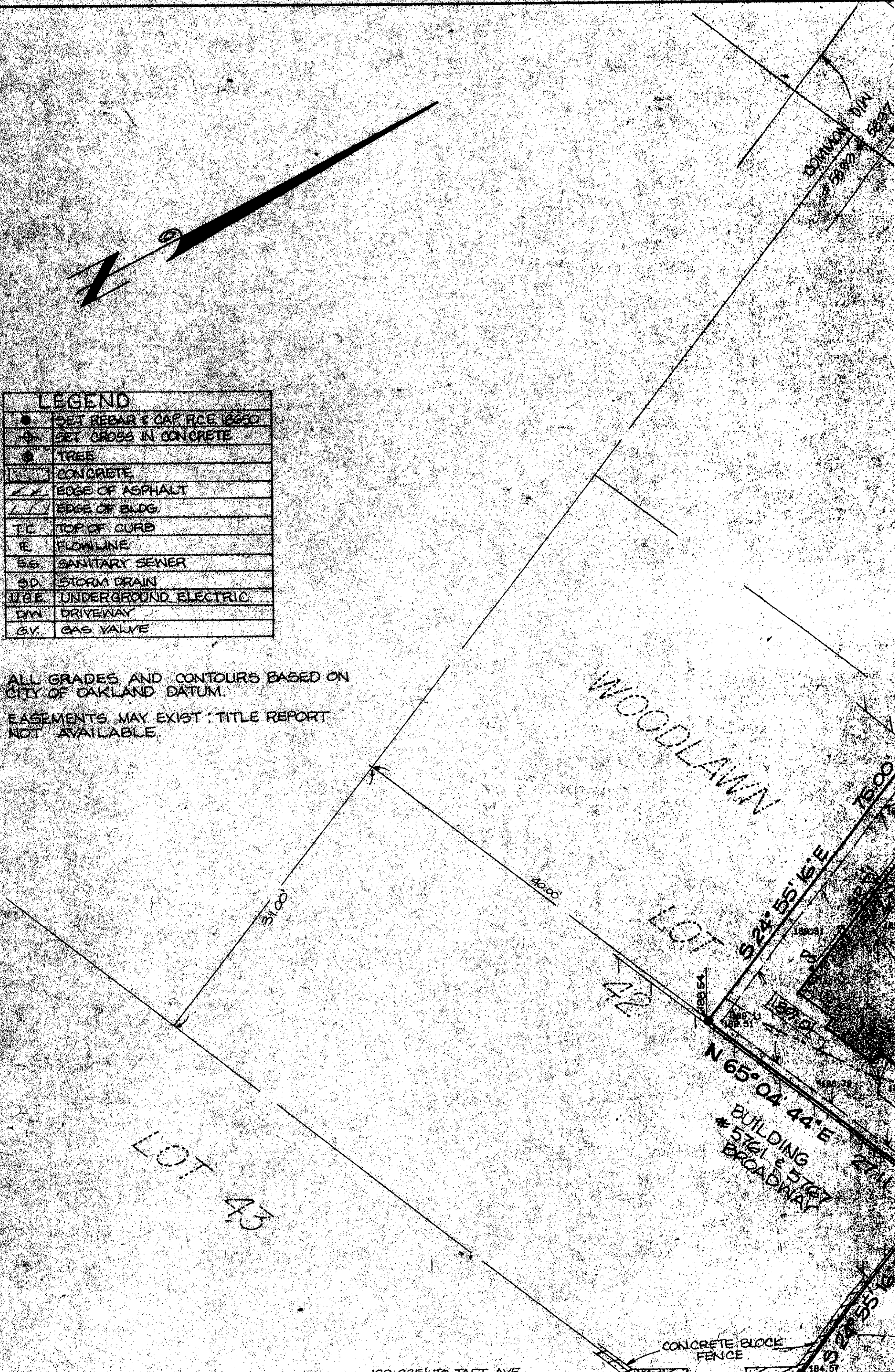
EASEMENTS MAY EXIST; TITLE REPORT NOT AVAILABLE.





LEGEND	
●	SET REBAR & CAP PCE 18650
⊕	SET CROSS IN CONCRETE
●	TREE
▒	CONCRETE
///	EDGE OF ASPHALT
///	EDGE OF BLDG.
TC	TOP OF CURB
FE	FLOWLINE
SS	SANITARY SEWER
SD	STORM DRAIN
UE	UNDERGROUND ELECTRIC
DW	DRIVEWAY
GV	GAS VALVE

ALL GRADES AND CONTOURS BASED ON CITY OF OAKLAND DATUM.
 EASEMENTS MAY EXIST; TITLE REPORT NOT AVAILABLE.



189.235' TO TAFT AVE.