



KAPREALIAN ENGINEERING  
INCORPORATED

TRANSMITTAL PAGE

DATE: 9/10/92

TO: Mr. Scott Seery

Alameda Co. Health Care Services Agency  
Dept. of Environmental Health

FROM: Joel Greger

Number of Pages (including Cover): \_\_\_\_\_

SUBJECT: <sup>historical</sup> ground water flow directions  
Unocal # 6277  
15803 East 14th St.  
San Leandro

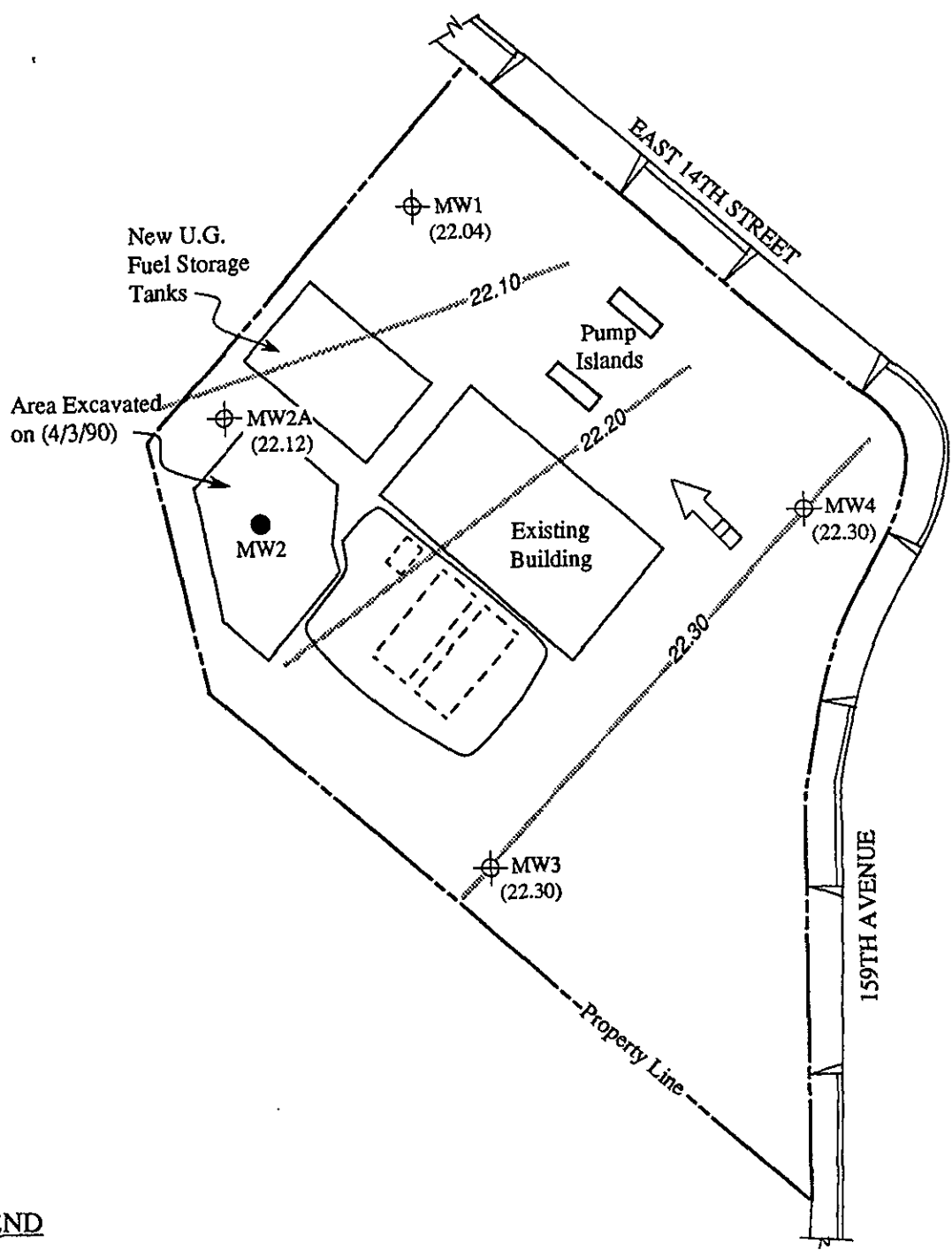
Enclosed please find published and all other flow direction data for the last hydrologic cycle. This data, and the historical published data below, indicate a consistent flow direction to the northwest.

Previous published data: <sup>maps</sup> not included

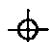


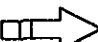
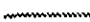
6/10/91	North
3/15/91	NNE
11/15/90	NW
7/25/90	NW
6/25/90	NW
3/29/90	NW
12/12/89	N
9/13/89	NNW

\*\*\*\*\*

If any problems occur in receiving, please  
call the number listed below



**LEGEND**

-  Monitoring well
-  Monitoring well (destroyed 2/1/90)
-  Ground water elevation in feet above Mean Sea Level
-  Direction of ground water flow
-  Contours of ground water elevation

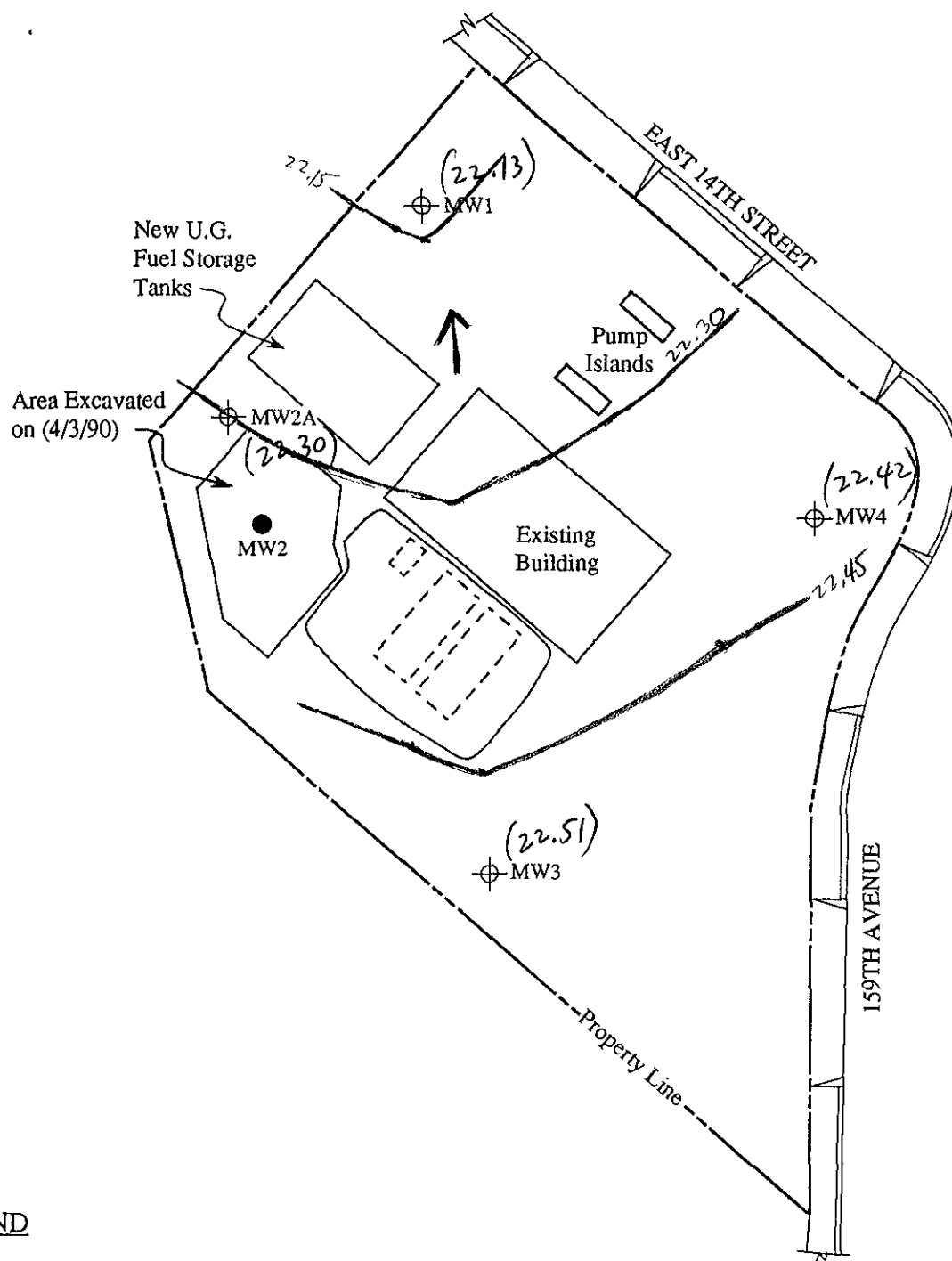


**POTENTIOMETRIC SURFACE MAP FOR THE JULY 20, 1992 MONITORING EVENT**



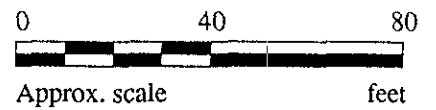
UNOCAL SERVICE STATION #6277  
15803 EAST 14TH STREET  
SAN LEANDRO, CA

FIGURE  
**1**



**LEGEND**

- ⊕ Monitoring well
- Monitoring well (destroyed 2/1/90)
- ( ) Ground water elevation in feet above Mean Sea Level
- ➔ Direction of ground water flow
- Contours of ground water elevation

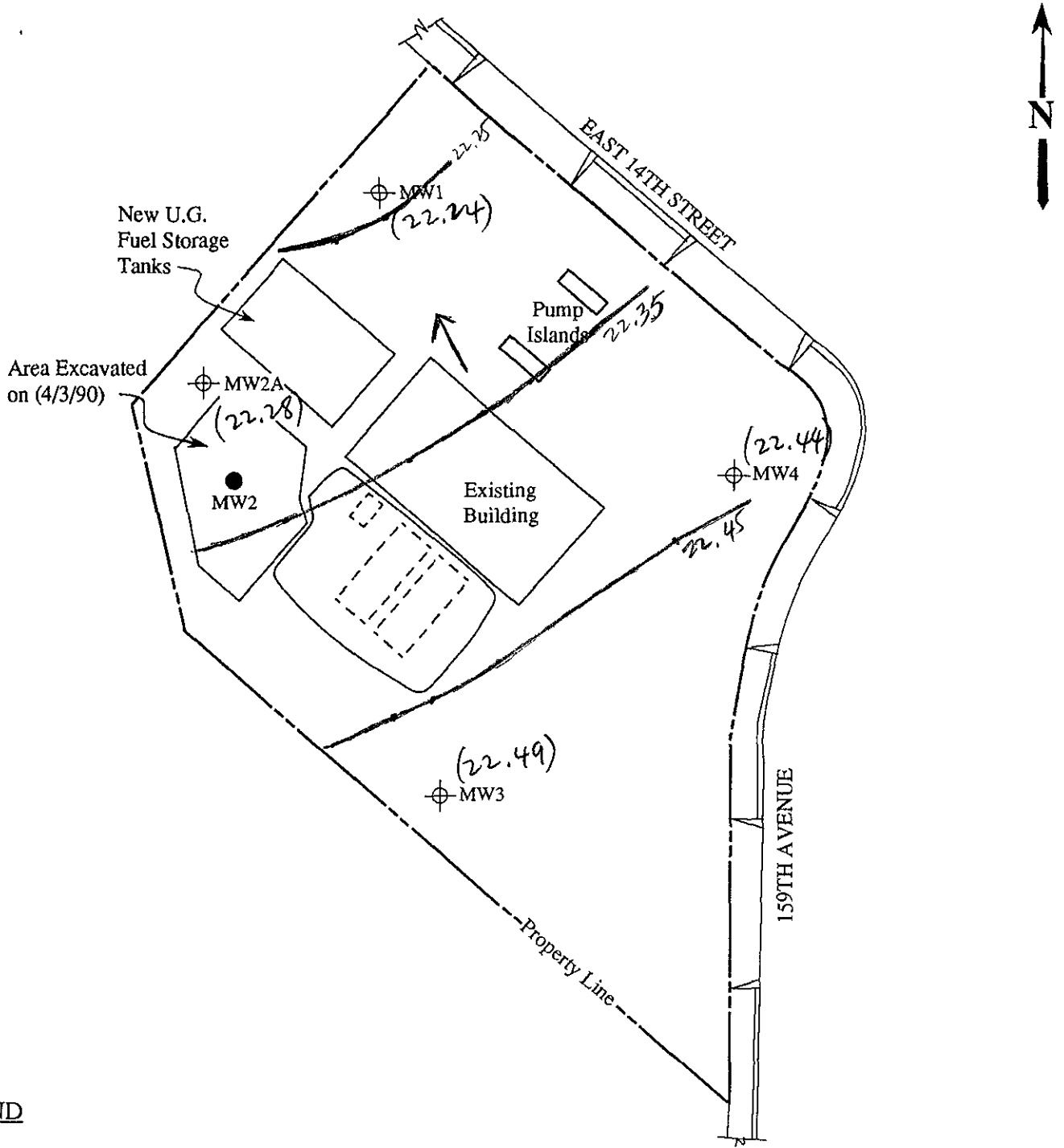


**POTENTIOMETRIC SURFACE MAP FOR THE *June 18, 1992* MONITORING EVENT**

**KAPREALIAN ENGINEERING  
INCORPORATED**

**UNOCAL SERVICE STATION #6277  
15803 EAST 14TH STREET  
SAN LEANDRO, CA**

**FIGURE  
1**



**LEGEND**

- ⊕ Monitoring well
- Monitoring well (destroyed 2/1/90)
- ( ) Ground water elevation in feet above Mean Sea Level
- ➔ Direction of ground water flow
- Contours of ground water elevation

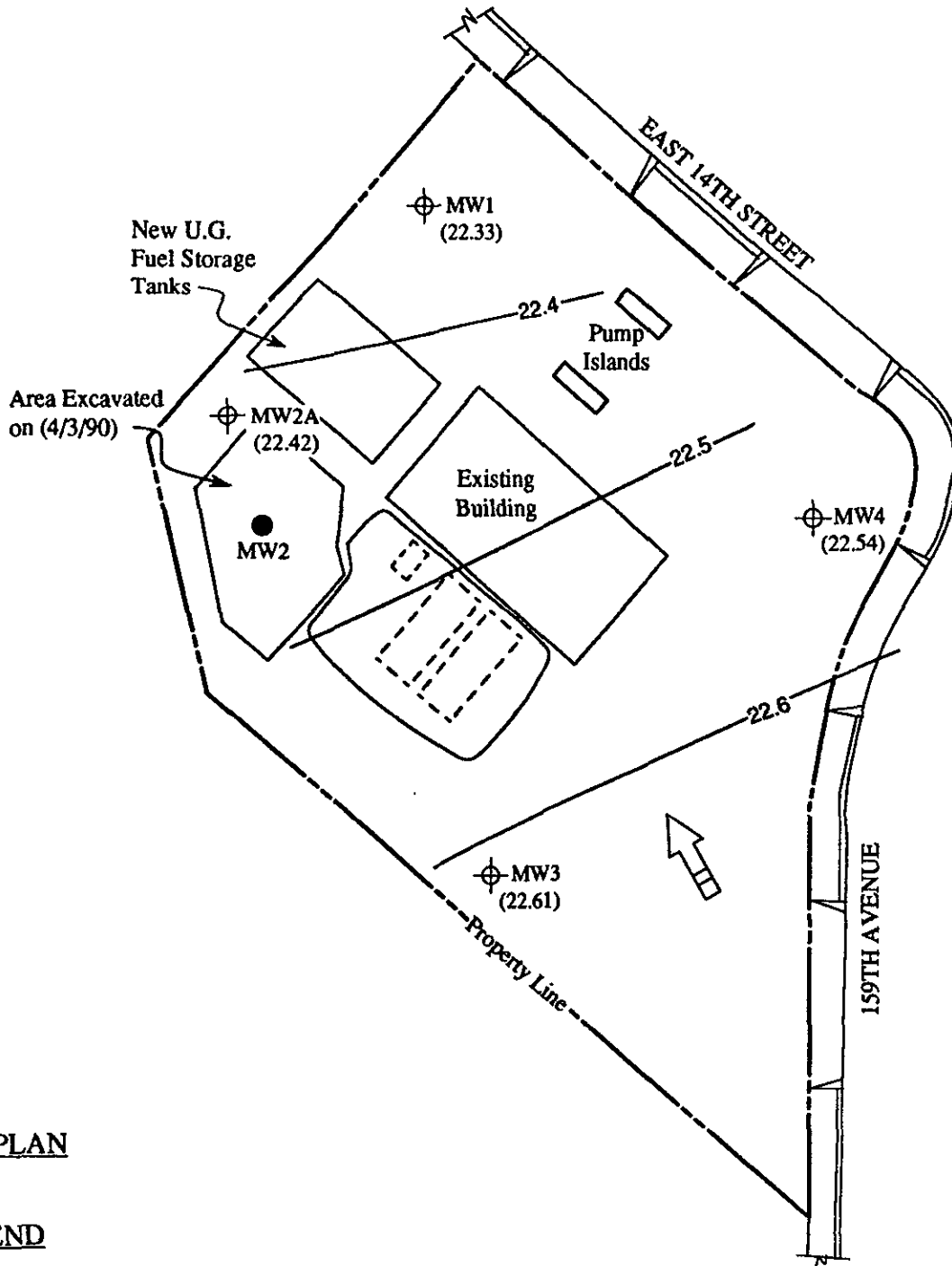


POTENTIOMETRIC SURFACE MAP FOR THE *May 22, 1992* MONITORING EVENT



**UNOCAL SERVICE STATION #6277  
15803 EAST 14TH STREET  
SAN LEANDRO, CA**

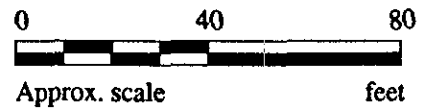
**FIGURE  
1**



**SITE PLAN**

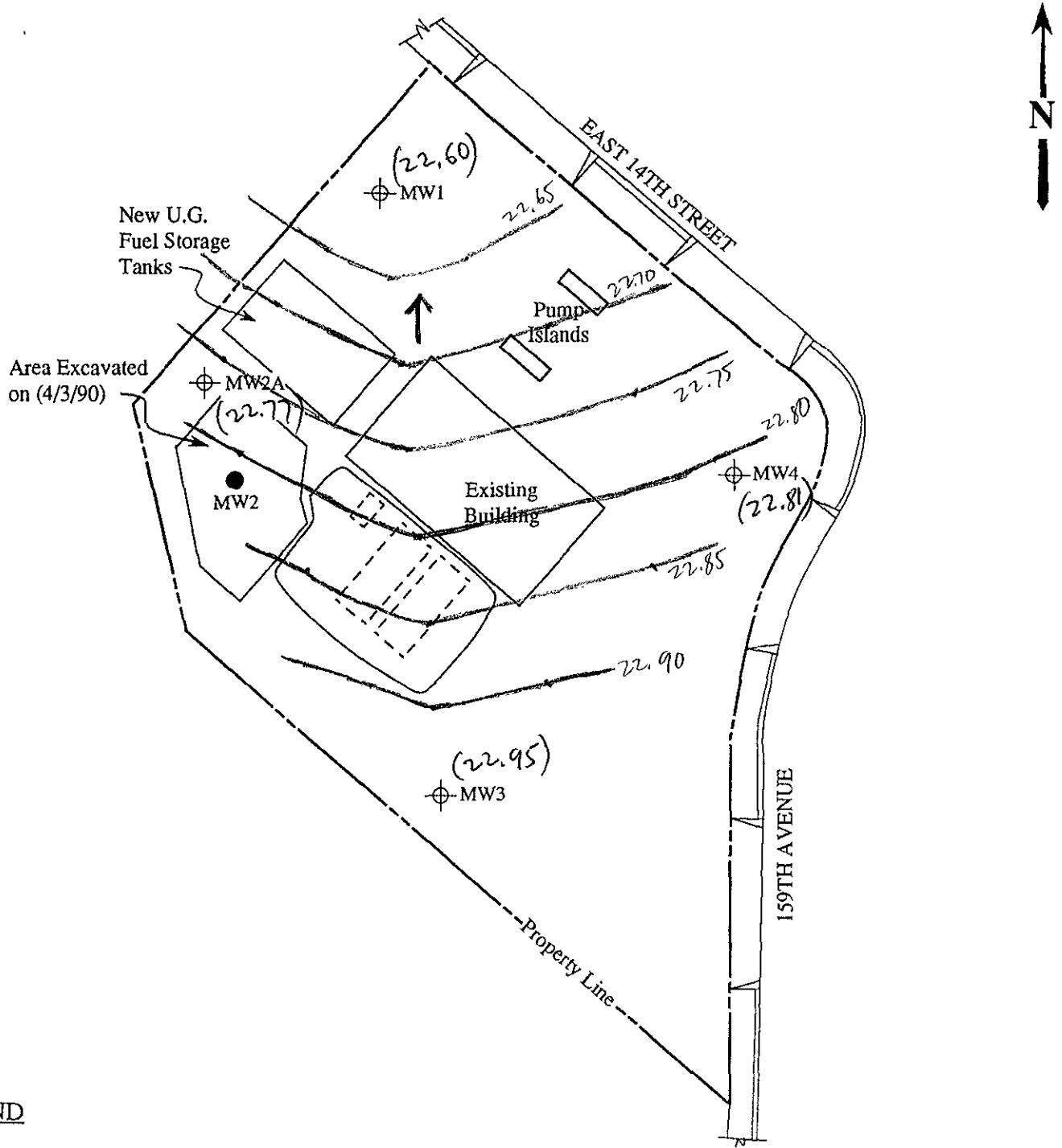
**LEGEND**

- Monitoring well
- Monitoring well (destroyed 2/1/90)
- Ground water elevation in feet above Mean Sea Level on 4/23/92
- Direction of ground water flow
- Contours of ground water elevation



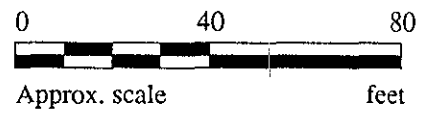
UNOCAL SERVICE STATION #6277  
15803 EAST 14TH STREET  
SAN LEANDRO, CA

FIGURE  
**1**



**LEGEND**

- ⊕ Monitoring well
- Monitoring well (destroyed 2/1/90)
- ( ) Ground water elevation in feet above Mean Sea Level
- ➔ Direction of ground water flow
- Contours of ground water elevation

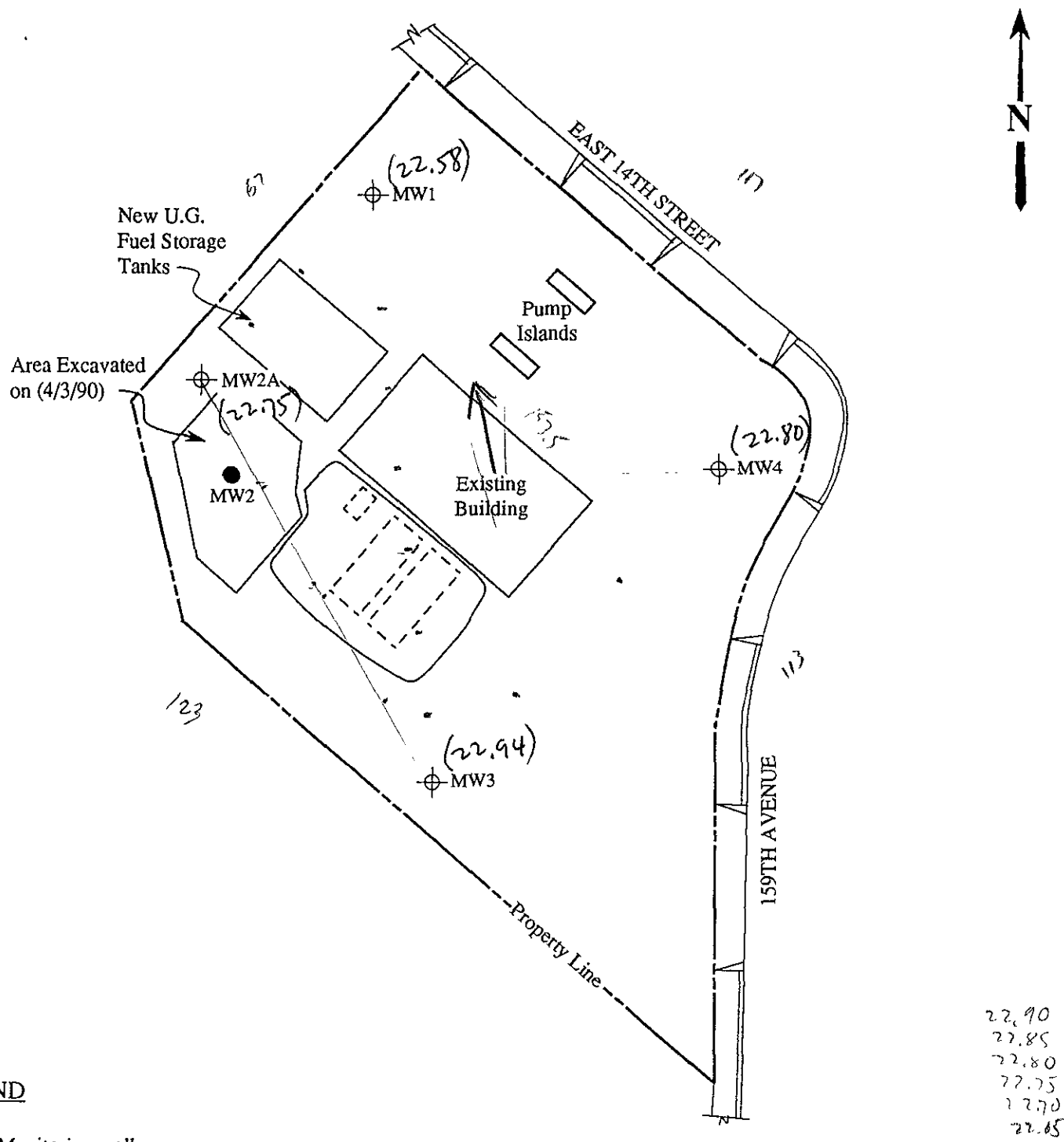


POTENTIOMETRIC SURFACE MAP FOR THE *March 20, 1992* MONITORING EVENT



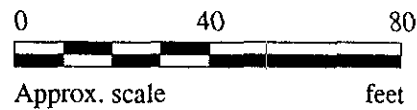
UNOCAL SERVICE STATION #6277  
 15803 EAST 14TH STREET  
 SAN LEANDRO, CA

FIGURE  
**1**



**LEGEND**

- ⊕ Monitoring well
- Monitoring well (destroyed 2/1/90)
- ( ) Ground water elevation in feet above Mean Sea Level
- ➔ Direction of ground water flow
- ..... Contours of ground water elevation



22.90  
22.85  
22.80  
22.75  
22.70  
22.65

**POTENTIOMETRIC SURFACE MAP FOR THE February 26, 1992 MONITORING EVENT**



**UNOCAL SERVICE STATION #6277  
15803 EAST 14TH STREET  
SAN LEANDRO, CA**

**FIGURE  
1**

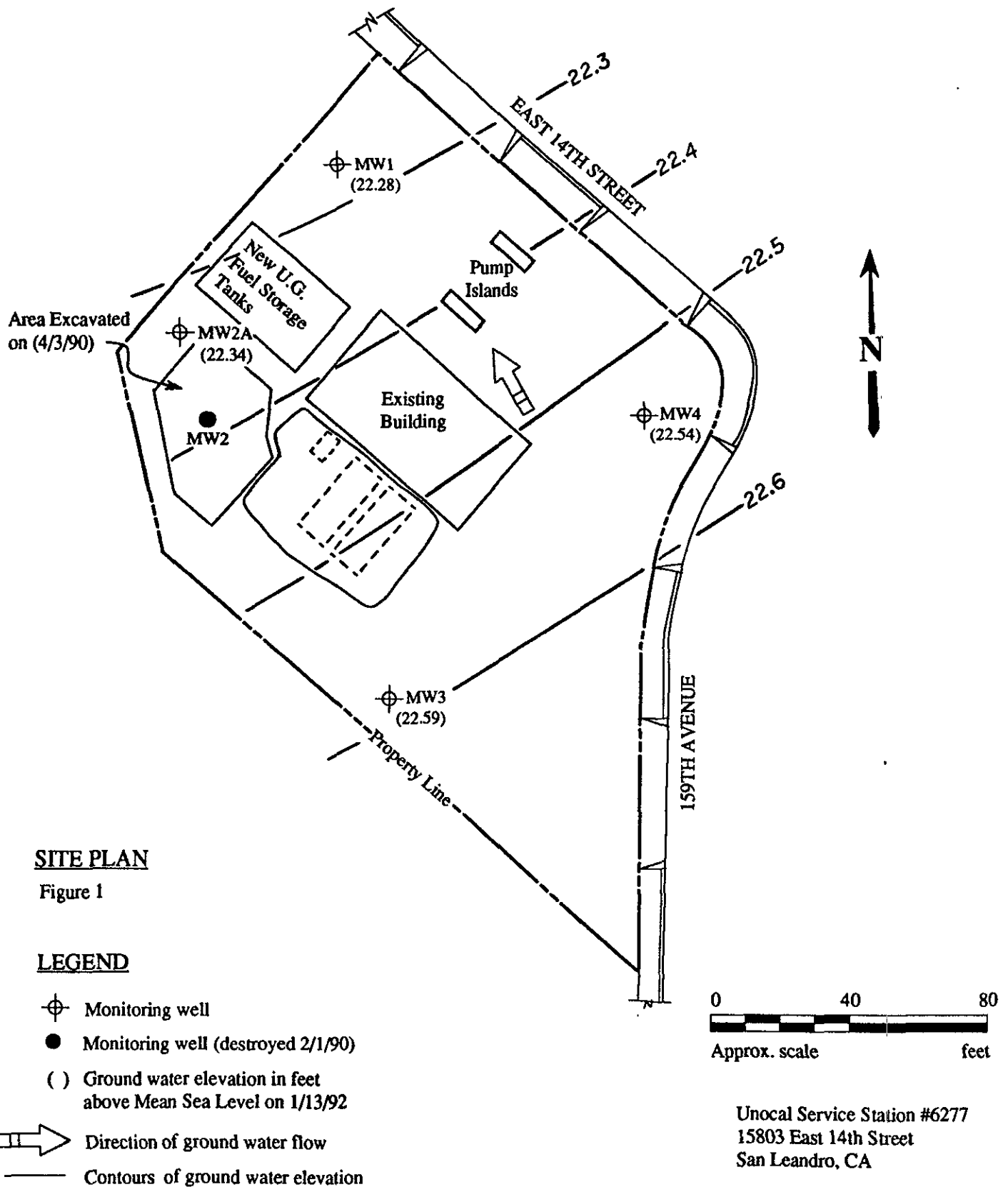


# KAPREALIAN ENGINEERING, INC.

Consulting Engineers

P.O. BOX 996 • BENICIA, CA 94510

(707) 746-6915 • (707) 746-6916 • FAX (707) 746-5581



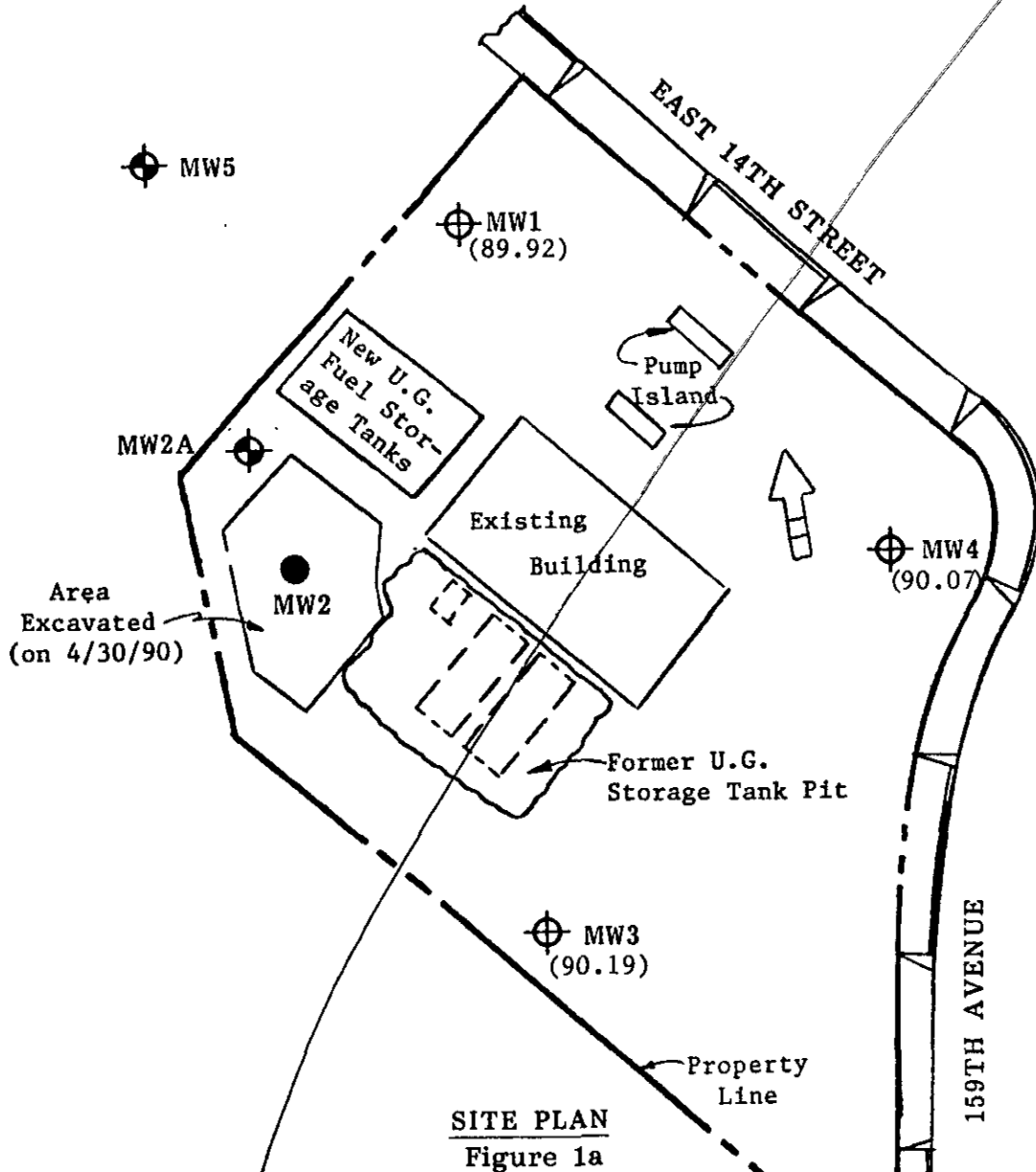




# KAPREALIAN ENGINEERING, INC.





Consulting Engineers

P.O. BOX 996 • BENICIA, CA 94510  
(707) 746-6915 • (707) 746-6916 • FAX: (707) 746-5581

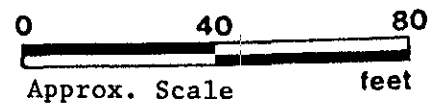


**SITE PLAN**  
Figure 1a

### LEGEND

-  Monitoring Well (proposed)
-  Monitoring Well (existing)
- ( ) Water table elevation in feet on 12/14/90. Top of MW4 well cover assumed 100.00' as datum.
-  Ground water flow direction.
-  Monitoring Well (abandoned 2/1/90)

*This is same exact data as in 12/14/90 map (1-23-91 report)*



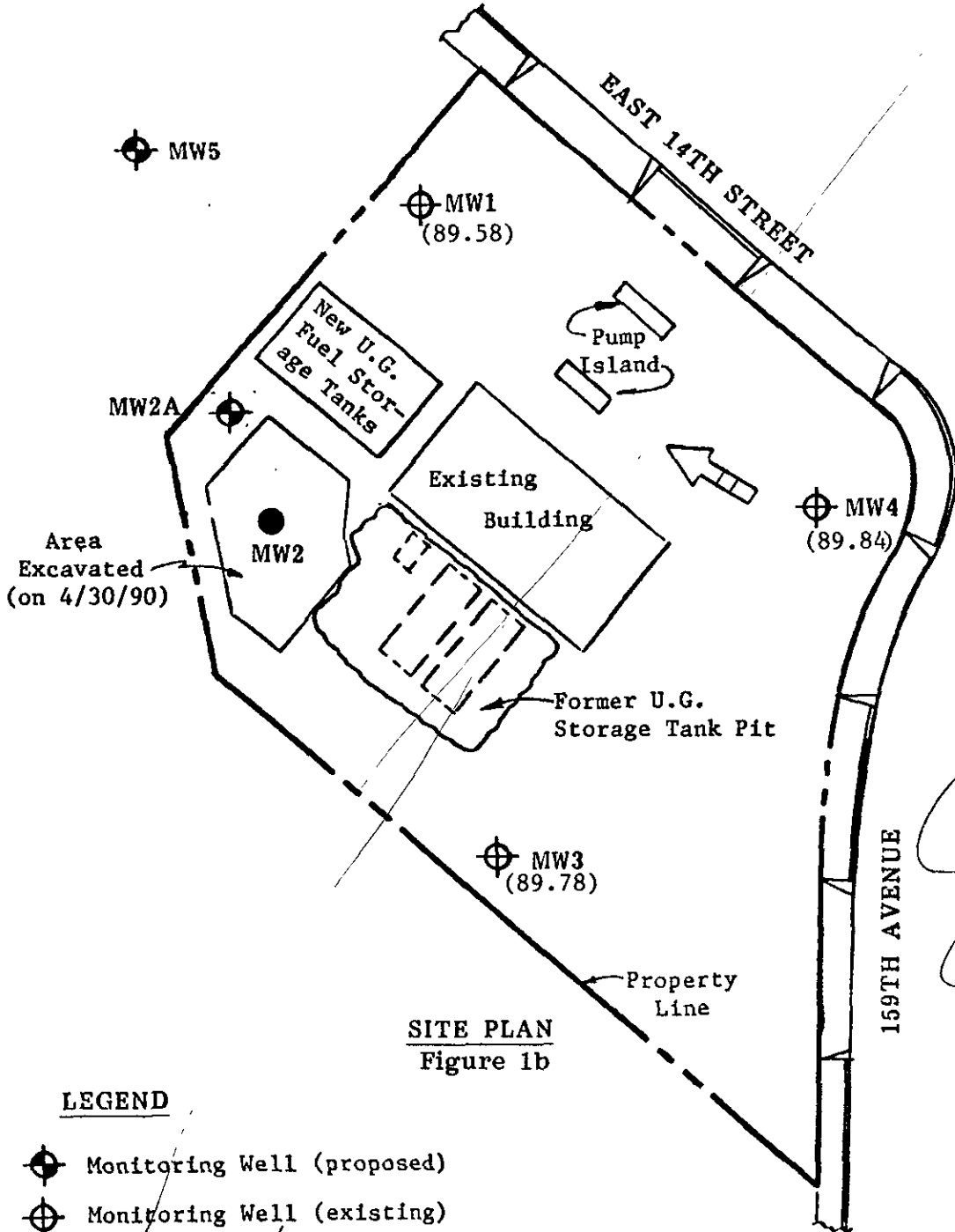
Unocal Service Station #6277  
15803 East 14th Street  
San Leandro, California



# KAPREALIAN ENGINEERING, INC.

Consulting Engineers

P.O. BOX 996 • BENICIA, CA 94510  
(707) 746-6915 • (707) 746-6916 • FAX: (707) 746-5581

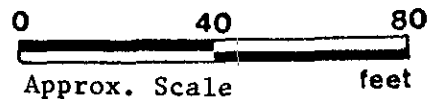


*This is same exact data as in 11/15/90 map. (1-23-91 report)*

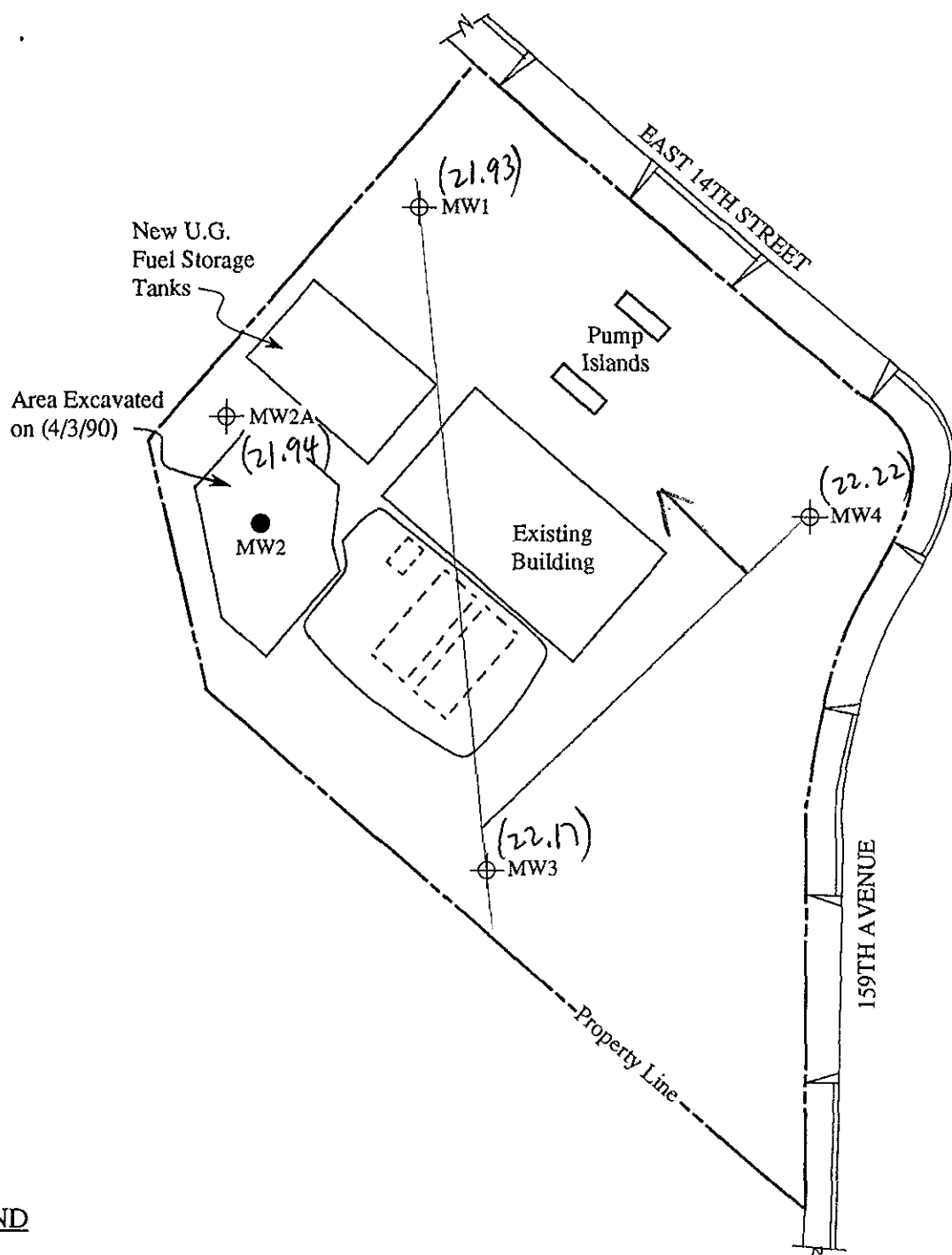
**SITE PLAN**  
Figure 1b

### LEGEND

- Monitoring Well (proposed)
- Monitoring Well (existing)
- Water table elevation in feet on 11/15/90. Top of MW4 well cover assumed 100.00' as datum.
- Ground water flow direction.
- Monitoring Well (abandoned 2/1/90)

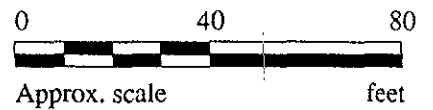


Unocal Service Station #6277  
15803 East 14th Street  
San Leandro, California



**LEGEND**

- ⊕ Monitoring well
- Monitoring well (destroyed 2/1/90)
- ( ) Ground water elevation in feet above Mean Sea Level
- ➔ Direction of ground water flow
- ..... Contours of ground water elevation

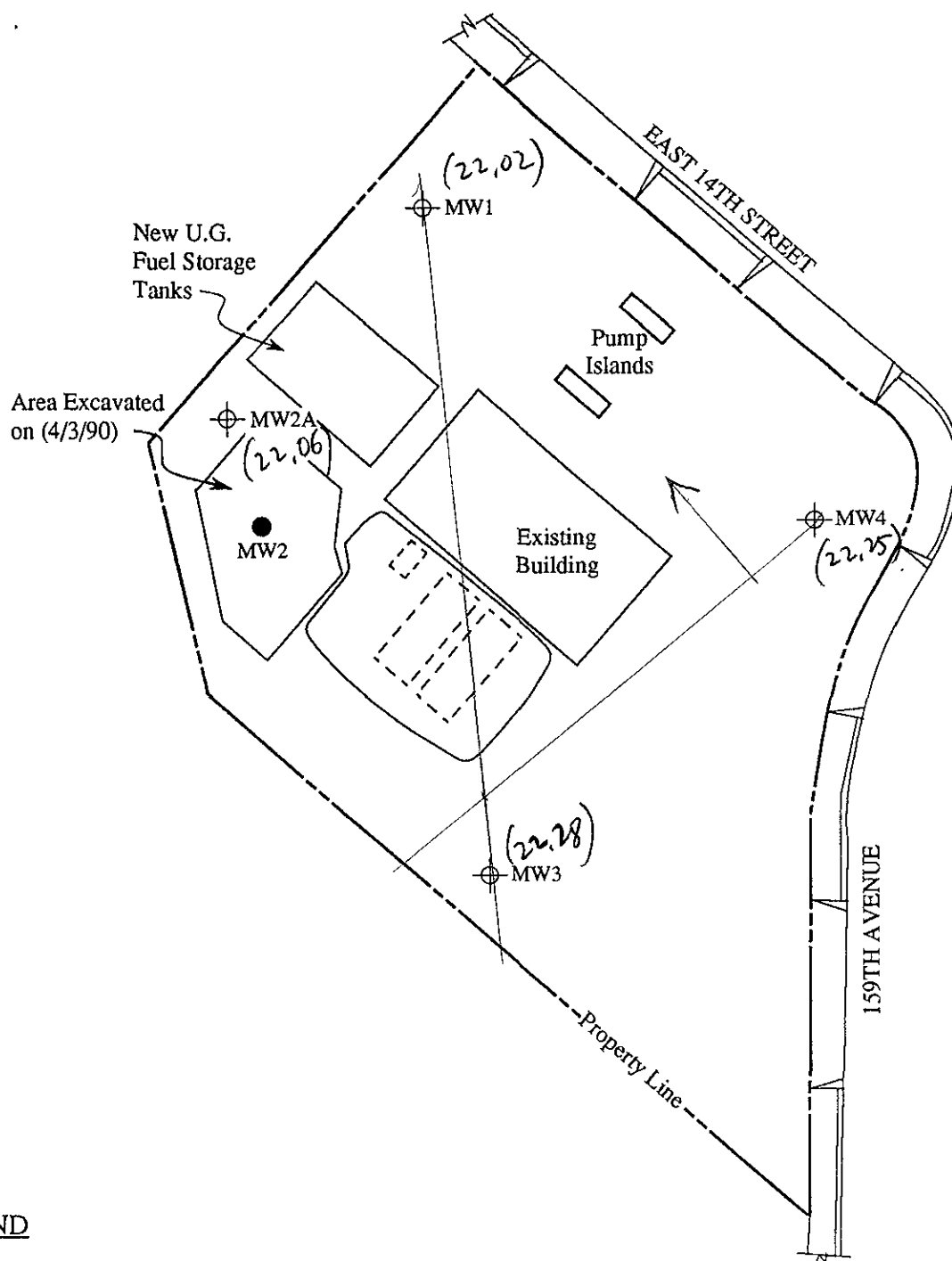


POTENTIOMETRIC SURFACE MAP FOR THE *October 10, 1991* MONITORING EVENT

**KAPREALIAN ENGINEERING  
INCORPORATED**

UNOCAL SERVICE STATION #6277  
15803 EAST 14TH STREET  
SAN LEANDRO, CA

FIGURE  
**1**



**LEGEND**

- ⊕ Monitoring well
- Monitoring well (destroyed 2/1/90)
- ( ) Ground water elevation in feet above Mean Sea Level
- ➡ Direction of ground water flow
- Contours of ground water elevation

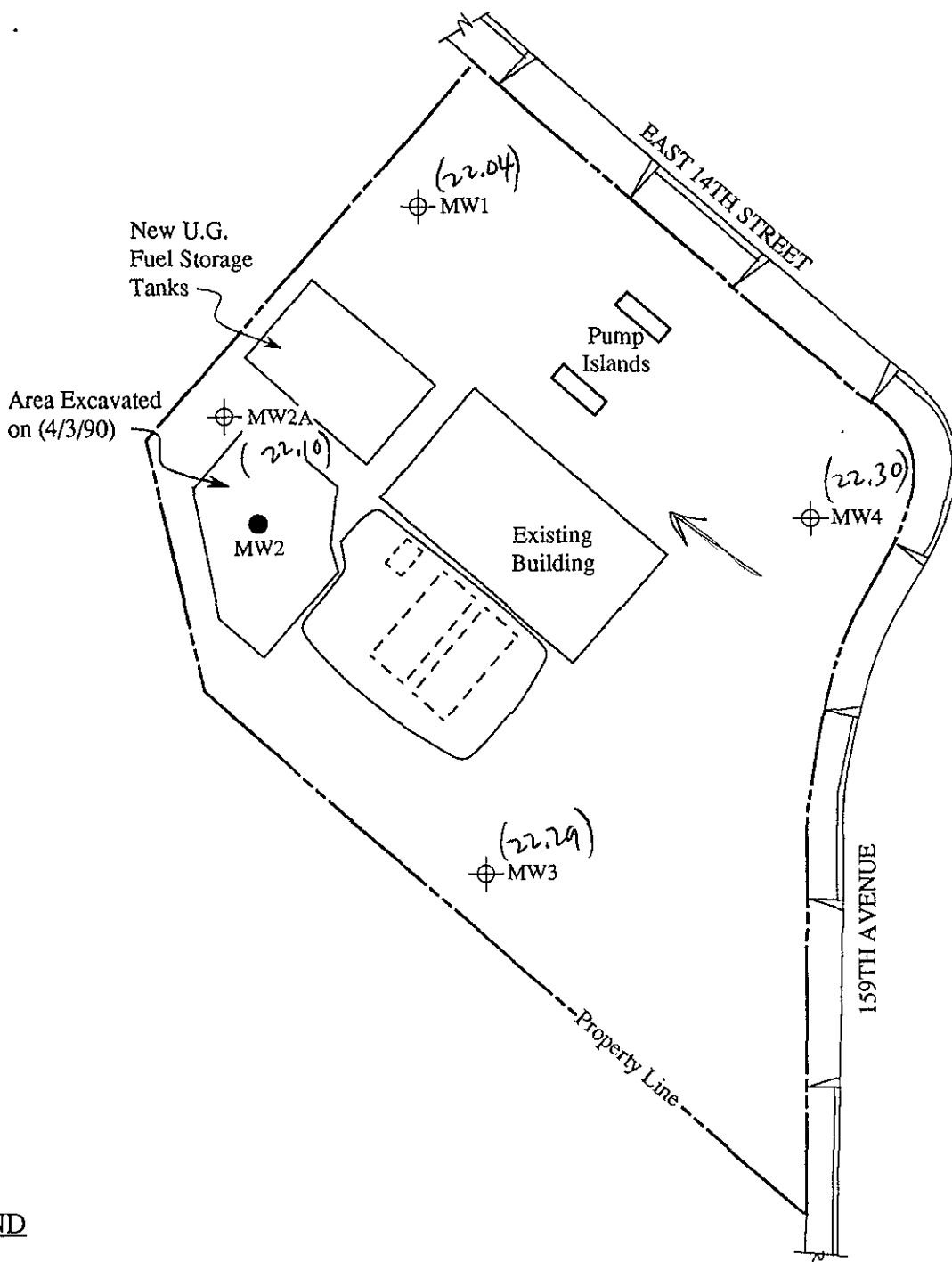


POTENTIOMETRIC SURFACE MAP FOR THE *September 10, 1991* MONITORING EVENT

**KAPREALIAN ENGINEERING  
INCORPORATED**

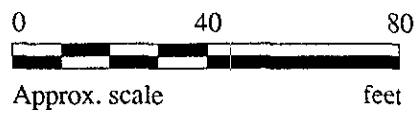
UNOCAL SERVICE STATION #6277  
15803 EAST 14TH STREET  
SAN LEANDRO, CA

FIGURE  
**1**



**LEGEND**

- ⊕ Monitoring well
- Monitoring well (destroyed 2/1/90)
- ( ) Ground water elevation in feet above Mean Sea Level
- ➡ Direction of ground water flow
- ..... Contours of ground water elevation



POTENTIOMETRIC SURFACE MAP FOR THE August 14, 1991 MONITORING EVENT

**KAPREALIAN ENGINEERING  
INCORPORATED**

UNOCAL SERVICE STATION #6277  
15803 EAST 14TH STREET  
SAN LEANDRO, CA

FIGURE  
**1**