

HK2, Inc. / SEMCO 1751 Leslie Street, San Mateo, CA 94402

FAX

Date: 1-14-97
 Number of pages including cover sheet: 5

To: Juliet Shin
(510) 337-9335
 Phone: _____
 Fax phone: _____
 CC: _____

From: MARK DIBERT
 Phone: 415-572-8033
 Fax phone: 415-572-9734

REMARKS: Urgent For your review Reply ASAP Please comment

Boring logs and site map
 (sorry so messy!)

Thanks
 Mark

P.S. Skiing / Boarding
 was great this weekend.
 Talk to you later.

10/4/96 Arrive 8am

BORING NUMBER **B1**

SHEET 1 OF 1

PROJECT WELNER

LOCATION 701 SAW PAVED

CONTRACT NUMBER

#96-0143/0247

LOGGED BY **MARK DHERT**

COORDINATES

SURFACE ELEVATION

DATUM

SAMPLE INFORMATION

STRATA

DESCRIPTION

WELL CONSTRUCTION DETAIL

ELEVATION FEET

DEPTH FEET

LAB SAMPLE

SAMPLE TYPE

BLOW COUNTS

Recovery %

HNU (ppm)

0'-6"

N/A

N/A

Opp

ASPHALT

DRIVE

9.00

①

6"-2'6"

DRIVE

9.15

②

2'6"-4'6"

DRIVE

9.30

③

4'6"-6'6"

4'6"-5'6"

5'6"-6'6"

24"

CLAY (brown)

SAMPLE

9.45

④

6'6"-8'6"

6'6"-7'6"

7'6"-8'6"

20"

CLAY (brown)

SAMPLE

10.00

⑤

8'6"-10'6"

8'6"-9'6"

9'6"-10'6"

24"

MOIST sandy/clay (brown)

SAMPLE

10.15

⑥

10'6"-12'6"

10'6"-11'6"

11'6"-12'6"

24"

rocky/sandy/clay (brown)

SAMPLE

10.30

⑦

12'6"-14'6"

12'6"-13'6"

13'6"-14'6"

24"

Clay (brown)

SAMPLE

10.45

⑧

14'6"-16'6"

15'-15'6"

15'6"-16'6"

18"

Clay (brown)

SAMPLE

11.00

⑨

16'6"-18'6"

16'6"-17'6"

17'6"-18'6"

15"

↓

Clay (brown)

SAMPLE

11.15

⑩

SAMPLE

Resistance @ 18'6"

10M
GWE 9.00' @ 11.00am
DWC = 15.77'

2.83" = TC
12.43" = TC - GWE
18.6" = DWC

12.43
- 2.83
9.60

~~OVERFLOW~~ 10' @ 9:30
GW @ ≈ 2' 300 LITER
DEPTH OF WELL = 17'3"

SUPPLIES:
2 BAG ICE
2 GAL DISTILLED WATER

300A TOTAL
300L

DRILLING CONTRACTOR HK2, Inc.
DRILLING METHOD Push
DRILLING EQUIPMENT SIMCO E
DRILLING STARTED

REMARKS
See key sheet for symbols and abbreviations used above.

WILL USE ABOVE

BORING NUMBER: 52

SHEET 1 OF 1

PROJECT: WETNER - 10/4/96

LOCATION: 701 San Pablo

CONTRACT NUMBER: #96-0193/0247

LOGGED BY: MARK DERT

COORDINATES

SURFACE ELEVATION

DATUM

SAMPLE INFORMATION

DEPTH FEET	LAB SAMPLE	SAMPLE TYPE	BLOW COUNTS	Recovery %	OVEN H2O (ppm)
------------	------------	-------------	-------------	------------	----------------

STRATA

DESCRIPTION

WELL CONSTRUCTION DETAIL	ELEVATION FEET
--------------------------	----------------

- ①
- ②
- ③
- ④
- ⑤
- ⑥
- ⑦
- ⑧
- ⑨
- ⑩

0'4"	NA			NA	Opp	ASPHALT		
4'-2'4"							✓	DRIVE 1:30
2'-4'4"							✓	DRIVE 1:45
4'-6'4"							✓	DRIVE 2:00
6'-8'4"							✓	DRIVE 2:15
8'-10'4"	10'4"-11'4" 9'4"-10'6"			22"		Clayey/Sand Green nodules/discolored		SAMPLE 2:30
10'-12'4"	12'4"-11'4" 11'4"-10'10"			18"		Clayey/Sand note: some discolor (green) in 12'4"-11'4"		SAMPLE 2:45
12'-14'4"							✓	DRIVE 3:00
14'-16'4"							✓	DRIVE 3:15
16'-18'4"							✓	DRIVE 3:30
18'-20'4"							✓	DRIVE 3:45

Resistance @ 18'6"

12/9 @ 10:00 am
 GWC @ 14.49'
 PWC = 17.78'

1.67 TC
 16.16 TC
 19.45 TC-OC

NOA TOTAL
 347 PRESERVIS

16.16
 1.67
 14.49

GWC ≈ DRY
 DEPTH OF WELL ≈ 18'6"

9'4" - 10'4" FIRST
 11'4" - 12'4" SECOND

DRILLING CONTRACTOR: HK2, Inc.
 DRILLING METHOD: Push
 DRILLING EQUIPMENT: SIMCO Earthprobe
 DRILLING STARTED: ENDED

REMARKS: See key sheet for symbols and abbreviations used above.

WELL LOG SYMBOLS

BORING NUMBER **B3**

SHEET 1 OF 1

PROJECT

LOCATION **701 San Pablo Ave.**

CONTRACT NUMBER **#76-0247**

LOGGED BY **Mark Dyer**

COORDINATES
SURFACE ELEVATION

DATUM **10/9**

SAMPLE INFORMATION						STRATA	DESCRIPTION	WELL CONSTRUCTION DETAIL	ELEVATION FEET
DEPTH FEET	LAB SAMPLE	SAMPLE TYPE	BLOW COUNTS	Recovery %	HNu (ppm)				
0'-4"						Concrete	✓ DRIVE		
① 4'-24"							✓ DRIVE		
② 24'-44"							✓ DRIVE		
③ 44'-64"							✓ DRIVE		
④ 64'-84"							✓ DRIVE		
⑤ 84'-104"	104'-9'9"	9'9"-8'9"				Clay green discoloration no odor	✓ SAMPLE	1:00	
⑥ 104'-124"	124'-11'4"	11'4"-10'4"				Clay green discoloration into 11'4" zone no odor	✓ SAMPLE	1:20	
⑦ 124'-144"							✓ DRIVE		
⑧ 144'-164"							✓ DRIVE		
⑨ 164'-184"									
⑩ 184'-204"									

= TC
 = TC - Saw
 = TC - BC

DEPTH OF WELL =
 GWR

WELL LOG SYMBOLS

DRILLING CONTRACTOR **HK2, Inc.**
 DRILLING METHOD **Push**
 DRILLING EQUIPMENT **SIMCO Earthprobe**
 DRILLING STARTED **ENDED**

REMARKS

See key sheet for symbols and abbreviations used above.

Environmental & General Engineering Contractors

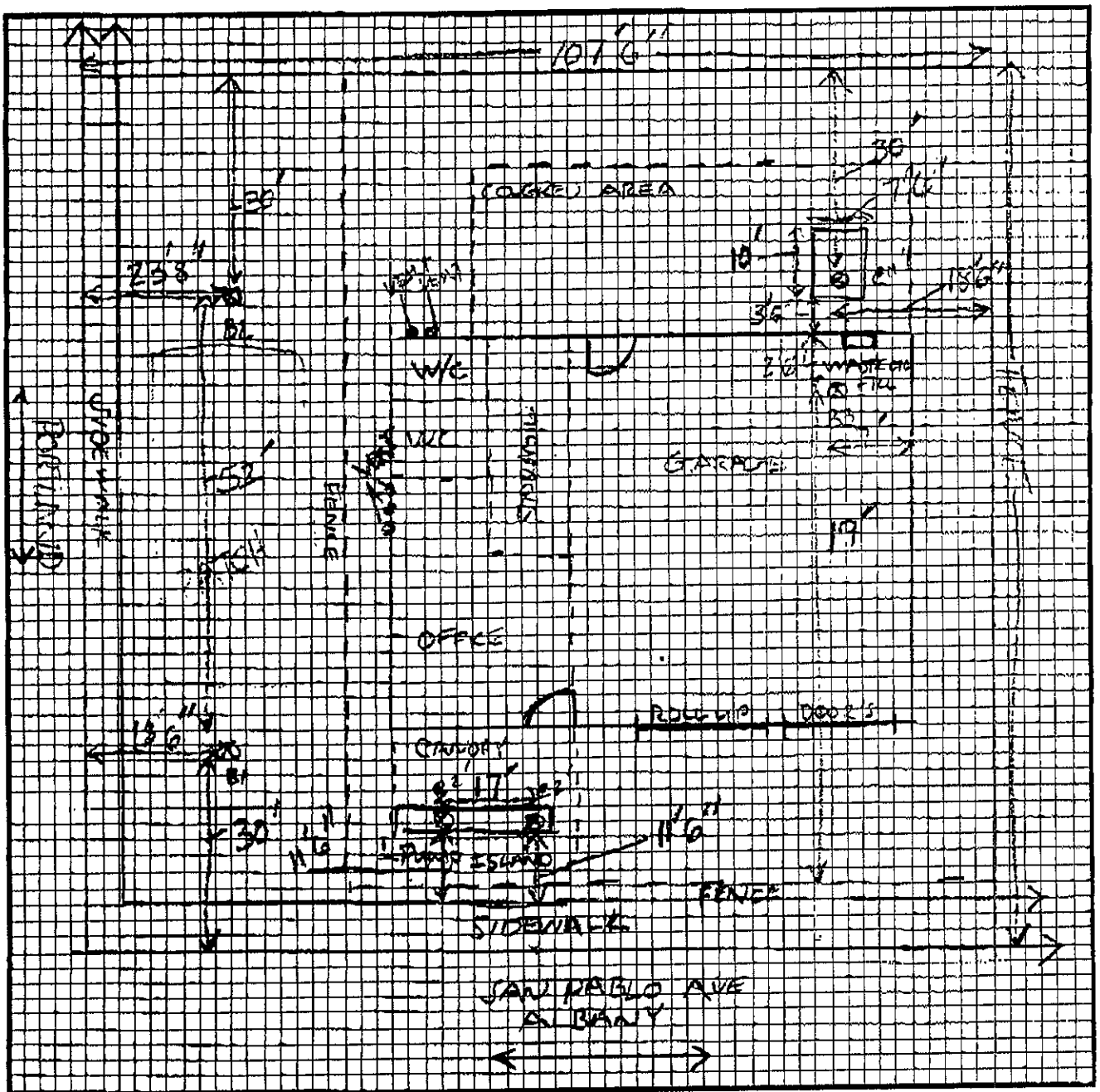
SEMCO
 1741 Leslie Street
 San Mateo, CA 94402
 (415) 572-8033

License No. 449864
 A, B, & C-61/D40
 Hazardous Substance Certificate

SEMCO
 1217 S. 7TH Street
 Modesto, CA 95351
 (209) 524-9653

SITE PLAN

SUBMITTED TO:		DESCRIPTION OF JOB:	
		Job #96-0247	
		Address 701 San Pablo Ave.	
		City Albany	State CA
		Phone	Date 10/2/96





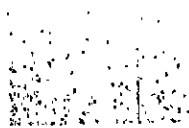
Pattern and color extend through the wear layer for a floor that looks good in tough traffic conditions.



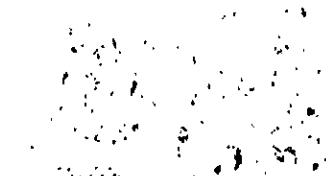
Spills can't sink in and absorb into the floor surface, making cleanup easy.



Rolling loads move easily over the durable vinyl surface.



Welding rods can be used to blend with or accent the welded seam.



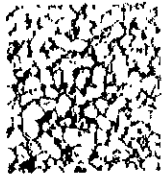
86529 Light Beige SEAGATE



86546 Ivory SEAGATE



86501 Beige SEAGATE



86523 Ecru SEAGATE



86530 Sandstone SEAGATE



86803 Sandstone SUFFIELD



86816 Lavender SUFFIELD



86819 Gray Lilac SUFFIELD



86544 Berry SEAGATE

86815 Floral SUFFIELD



86515 Rose/Beige SEAGATE



86545 Blush SEAGATE

NOTE: Samples pictured do not show all accent colors.

PHYSICAL DATA

Form: 6 ft (1.83 m) wide rolls up to 90 ft. (27.4 m) in length

Gauge: 0.085 in. (2.16 mm) overall (nominal)
0.050 in. (1.27 mm) wear layer (nominal)

Reference Specifications: Fed. Spec. L-F-475A(3), Type II, Grade A
ASTM F 1303, Type II, Grade 1, (Class A backing)
MIL STD 1623D for deck covering (shipboard use)
Products related to these specifications are manufactured to meet or exceed specification requirements.
Backing is suitable for use on all grade levels.

Fire Test Data: ASTM E 648 Critical Radiant Flux — 0.45 watts/cm² or more — Class 1
ASTM E 662 Smoke — 450 or less
Numerical flammability ratings alone may not define product performance under actual fire conditions. They are provided only for use in selection of products to meet the limits specified.

Static Load Limit: ASTM F 970
125 psi (8.79 kg/cm²)

Durability: Superior

Ease of Maintenance: Excellent

Resistance: Excellent

Approximate installed cost per square foot \$2.25 to \$3.00.

