

LIVY FENCE

N 8° 03' 40" E

125

100.58' N 81° 56' 20" W

8x10x7 high steel Enclosure

550 GA W.O. TUB

SOFT DRINK DISP.

DRINKING Fountain

Soft Drink Disp. (Pipe & Cap)

TOP SHAPE FLUOR.

LTS O.H.

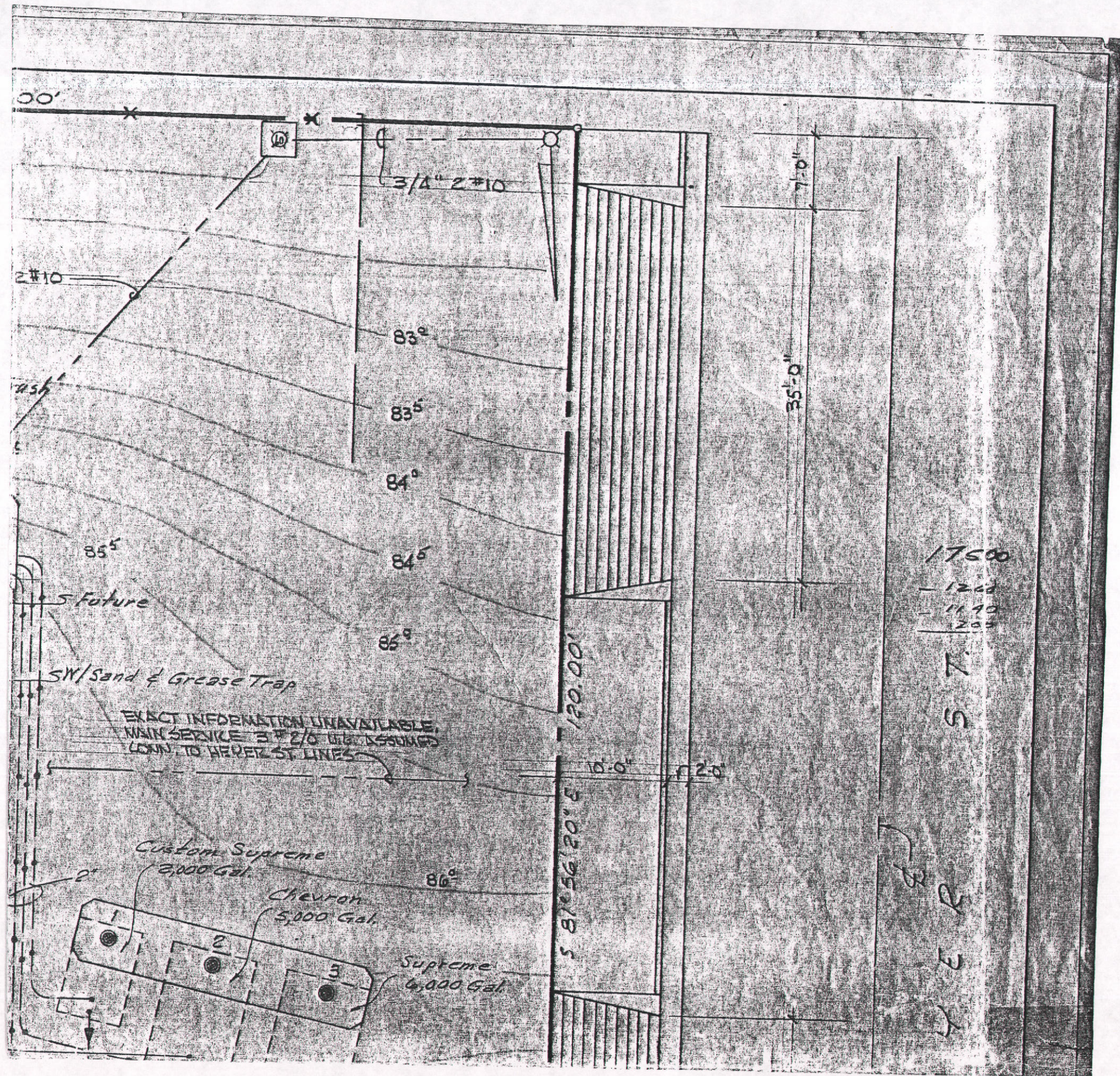
1/2" LUBE ROOM 86"

1 1/2" 4" I.C. O.H. FOR FLUOR. SYSTEM

3/4" 4" I.C. ENCL.

1/2" 2" I.C.

TOP BLK 86"



00'

2#10

45'

85°

5' Future

SW/Sand & Grease Trap

EXACT INFORMATION UNAVAILABLE.
 MAIN SERVICE 3" 2/0 (11" ASSUMED)
 CONN. TO HERTZ ST LINES

Custom Supreme
 2,000 Gal.

Chevron
 5,000 Gal.

Supreme
 6,000 Gal.

83°

83.5°

84°

84.5°

85°

86°

3/4" 2#10

120.00'

5 81° 56' 20" E

10.0'

120'

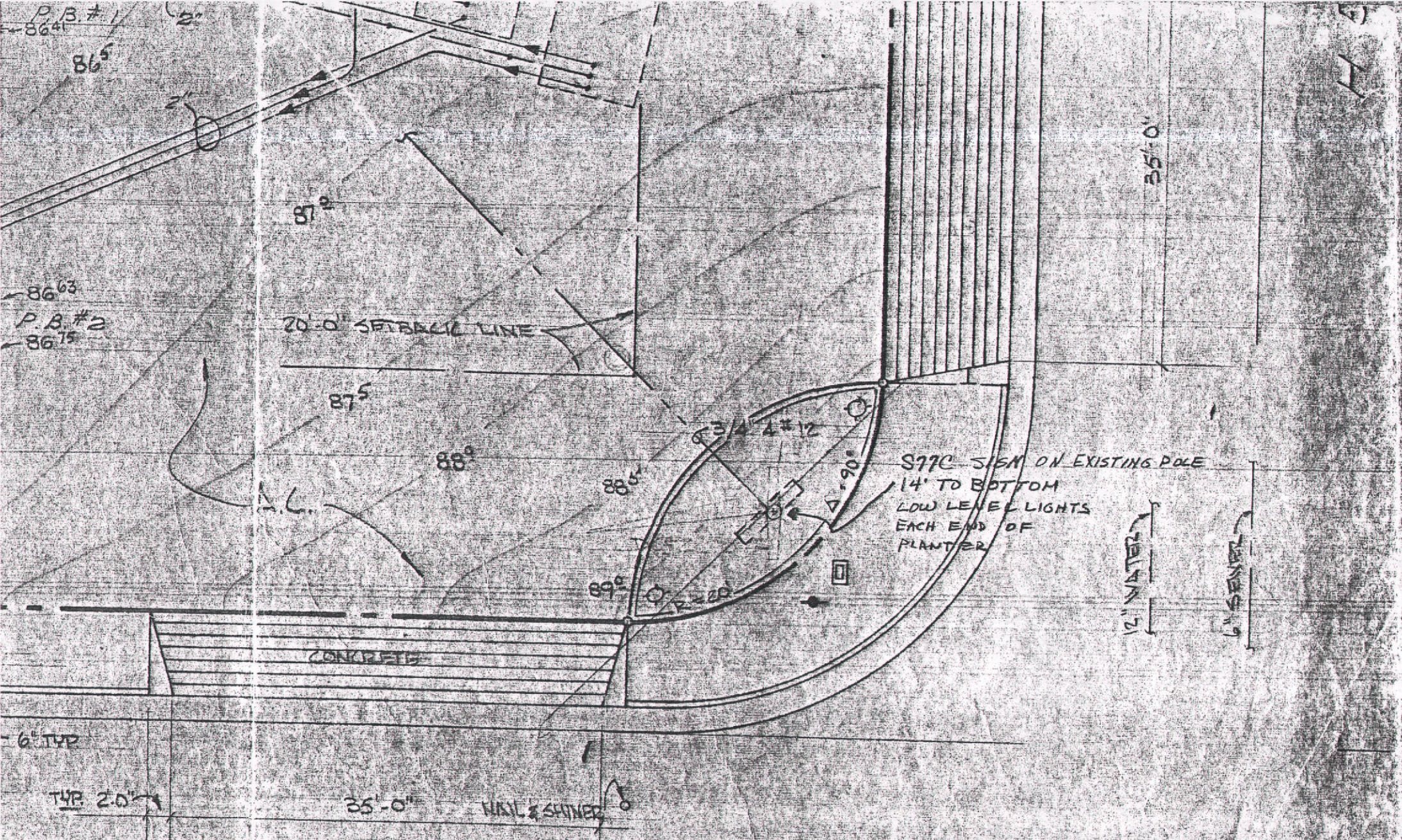
7'-0"

35'-0"

17500
 - 1200
 - 1140
 - 200

W
 S
 T

HERTZ



SERVICE STATION N° 3356
 CENTER & HEYER
 CASTRO VALLEY, CALIF.

STANDARD OIL COMPANY OF CALIFORNIA
 WESTERN OPERATIONS, INC.

- Stub Up & Cap
- ⊥ Air Outlet (1/2" Typ)
- ⊥ Hose Bibb
- Air & Water Dispenser & Cash Box
- Air & Water Disp., Cash Box & Meter
- Air & Water Dispenser - Plain
- Air & Water Dispenser with Meter

REVISIONS			
NO.	DR.	DATE	
5			
4	B.M.	4/7/61	S77C SIGN & LIGHTER BOX 2 LOW LEVEL LIGHTS
3	M.G.	9/30/59	2 New Planters, Soffit Lights New canopy lights
2	AR	11-9-61	Added Hoist
1	U.W.	1-24-60	AS CONTD.

SCALE 1"=10'-0"
 DATE 3-19-60 CK. *[Signature]*
 DR. U.W. AP *[Signature]*