

CINB
R 3000
 Δ 04° 55' 32"
T 129.030
L 257.901'

Y 509762.293
X 1431322.455

Y 509284.207
X 1478227.175
SET CDH N+S

22 RT AC 301+88.93 FOT
CINB - 30+00.00 EC

CINB 32-57.90 PCC

End Wall
AK 32+50

RET WALL
CINB LINE
DCINB 31+35.73 BC

BCINB 32-53.44 PRC

CPN LINE

CPN
R = 5000'
 Δ = 07° 45' 31"
T = 339.052'
L = 677.067'

Y 509953.538
X 1483385.142

DCINB
R = 1500'
 Δ = 04° 29' 47"
T = 53.888'
L = 117.715'

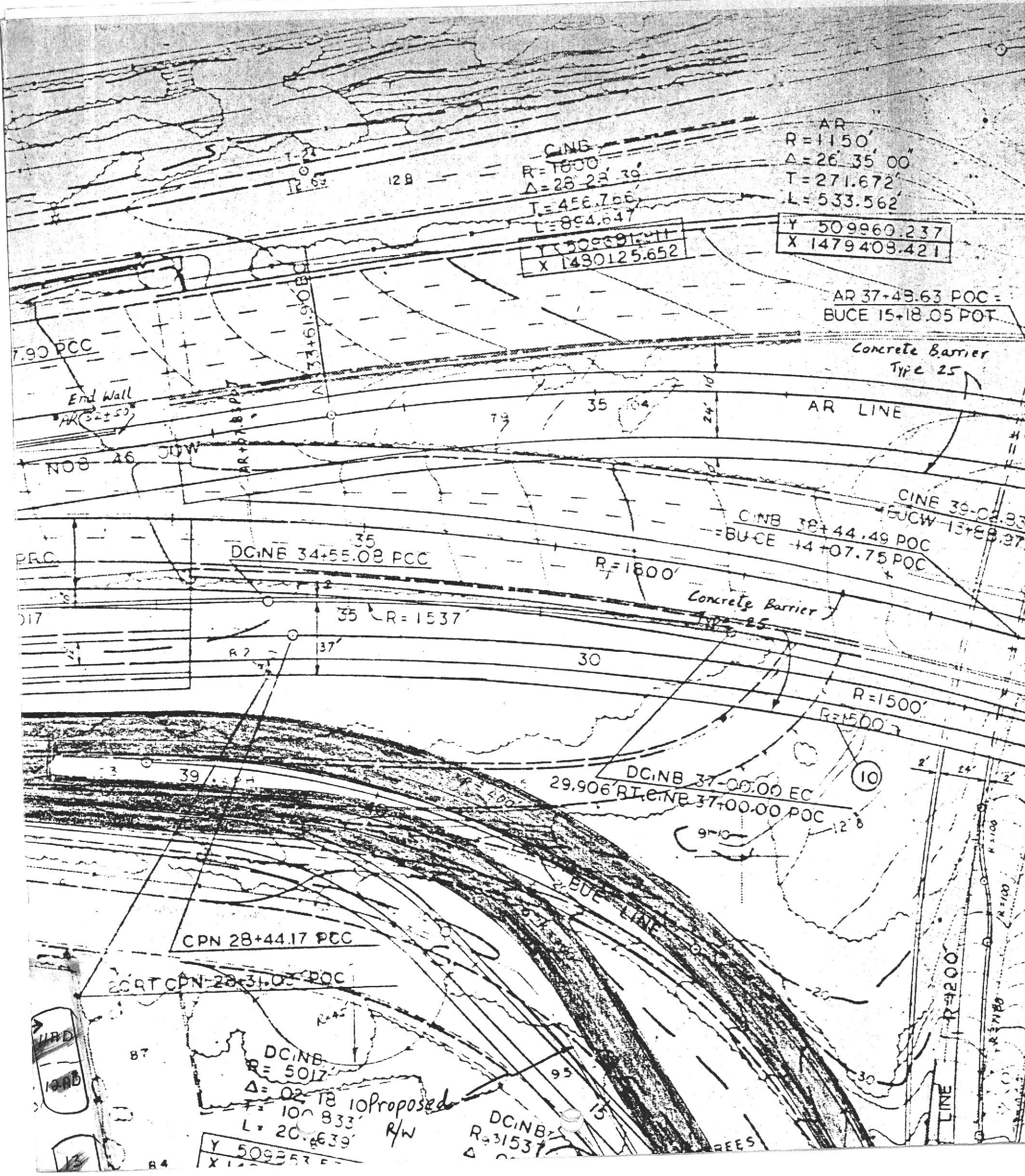
Y 509460.082
X 1476880.931

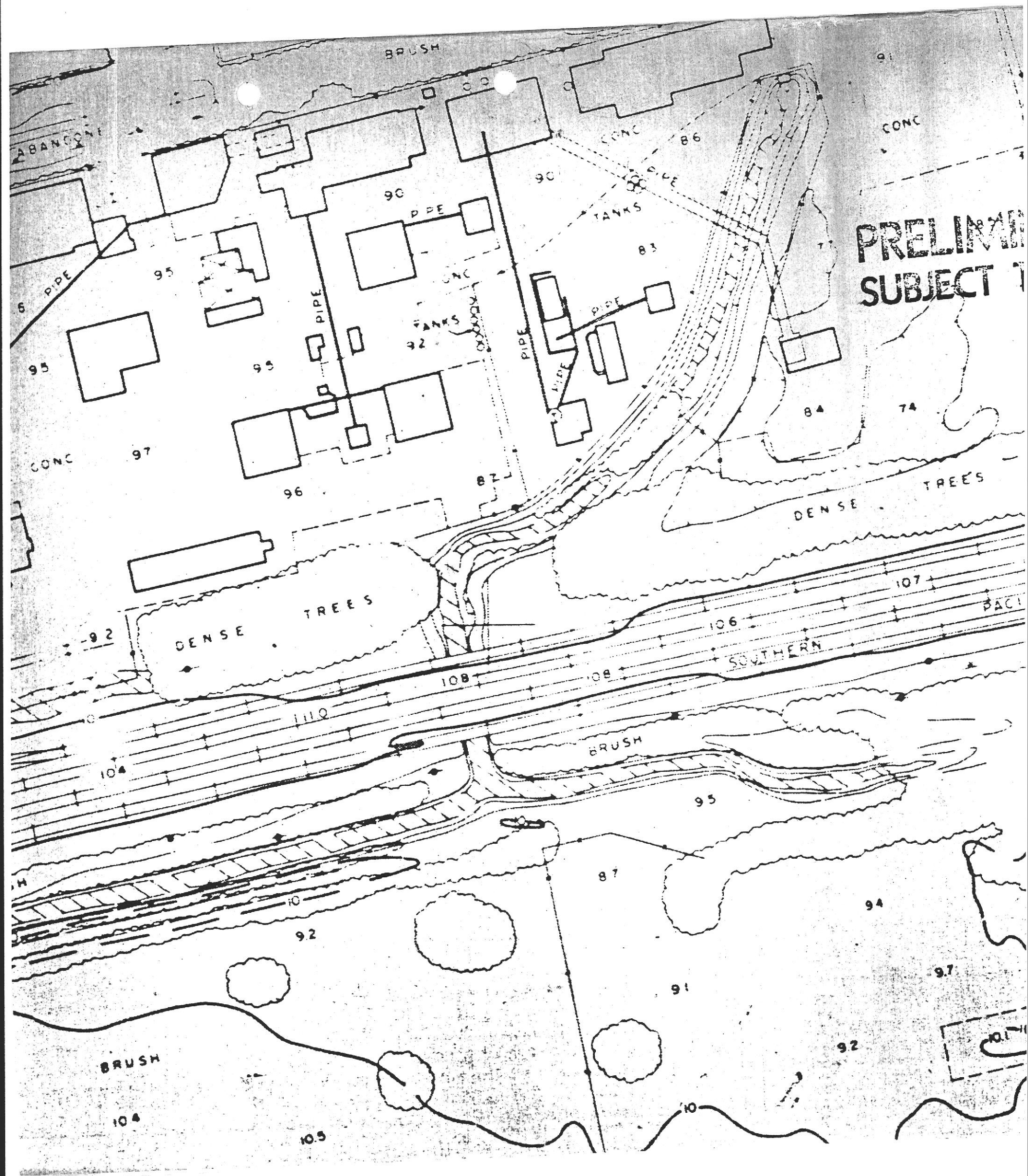
Stockpile
MONITOR WELL WATER SAMPLE

CPN 2

20 RT CPN-28

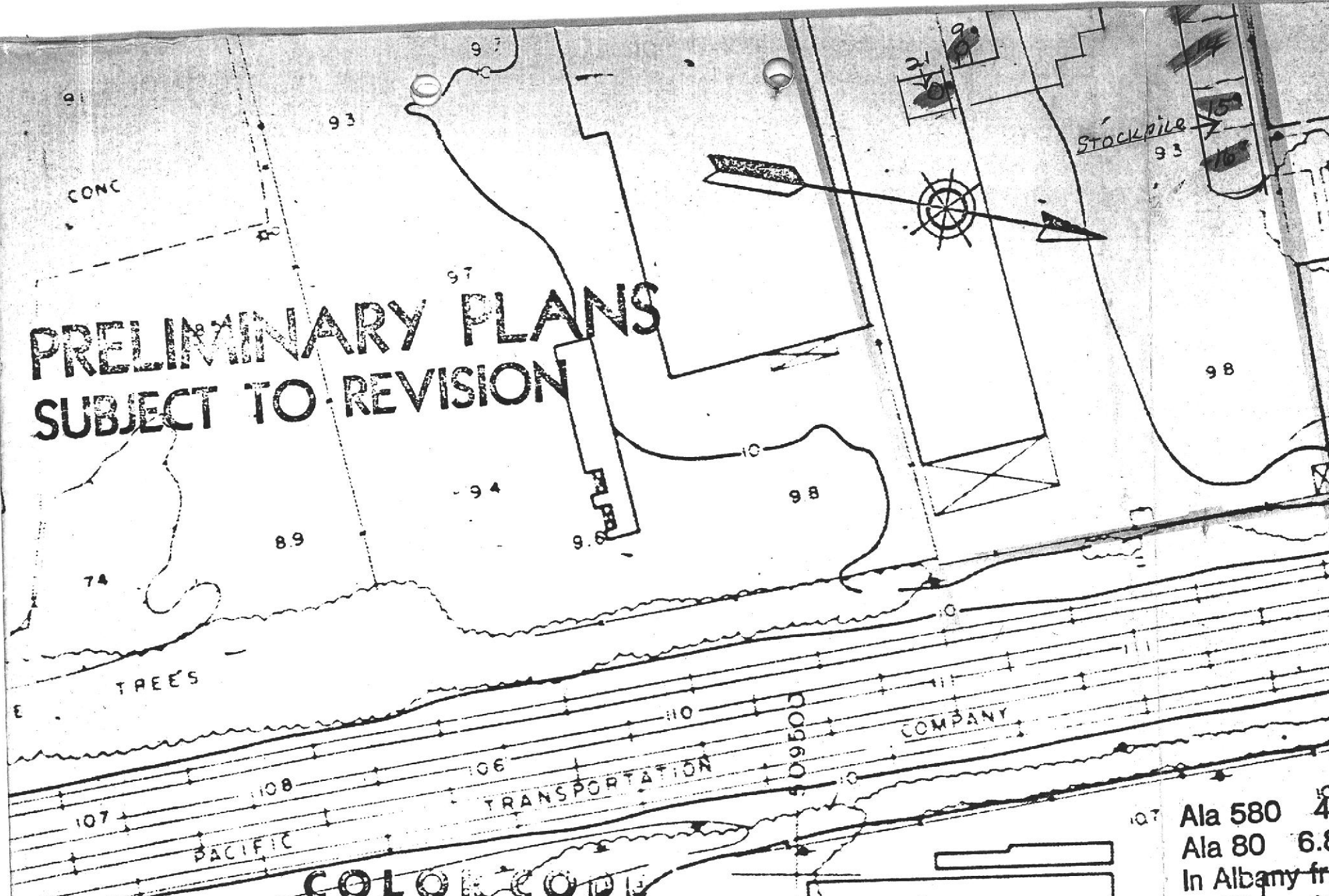
Y
X





PRELIMINARY
SUBJECT 1

PRELIMINARY PLANS SUBJECT TO REVISION



COLOR CODE

- HIGHWAY PAVEMENT
- RAMPS
- FRONTAGE & CROSS RDS.
- EXISTING-ROADS
- SHOULDERS (ROADWAY)
- STRUCTURES (BRIDGE)
- WALLS & MISC. STR.
- CURB AND GUTTER
- SIDEWALKS
- TOP OF CUT SLOPES
- TOE OF FILL SLOPES

Detect
Non Detect
MONITOR Well

WILKINSON SITE
1025 EAST SHORE FWY
ALBANY, CALIFORNIA

Ala 580 47
Ala 80 6.8
In Albany fre
of Gilman to
(Unit 1)
04208-180

COORD
NA

T-31
O
8.33

CPN:
R 1500
Δ 25 38 40
T 341.403
L 671.370
Y 509791.963
X 1479885.684

509783.169
X 1479905.854

BUCE 10+87.78 POC
BUL 21+03.77-EC

Remove Existing Curb
& Railing Replace with
Core Barr Type 25

Concrete Barrier
Type 25

BUL
R=80
Δ=138.15 08
T=209.786
L=193.037

Y 510192.197
X 1476700.142

Remove Existing Curb,
Railing & Stairway

Replace with Core Barr Type 50A

Ala 580 47.3/48.0
Ala 80 6.8/8.0
In Albany from 0.2 MI N
of Gilman to CC. County Line
(Unit 1)
04208-180101

510000

16LT E2A 213+07.26
BUR 20+00.00

30.417 LTR E2A 214+26.62

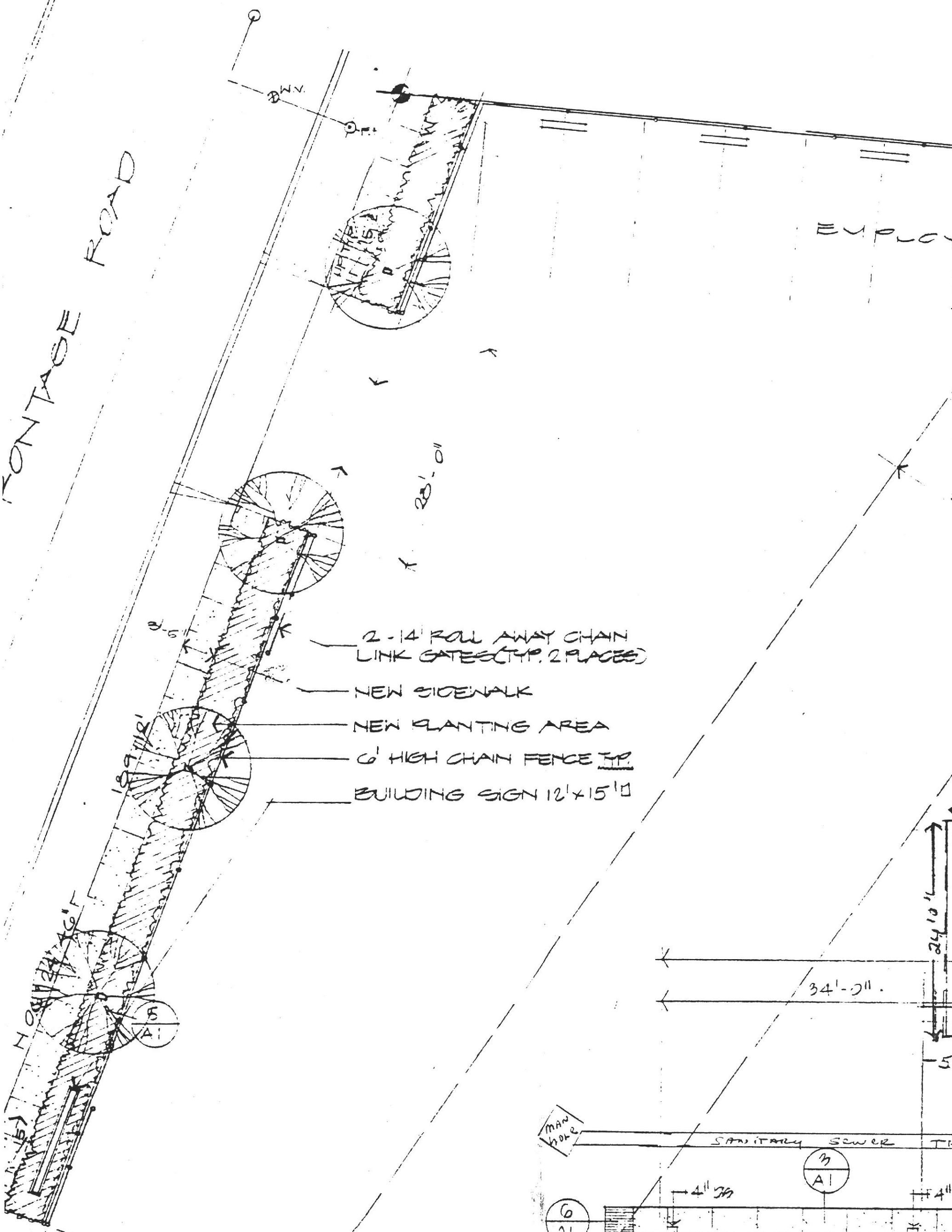
T-43
O
12.15

COORDINATE SYSTEM - CCS
NATIONAL GEODETIC VES
DATE OF 1989

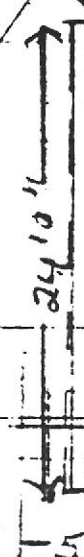
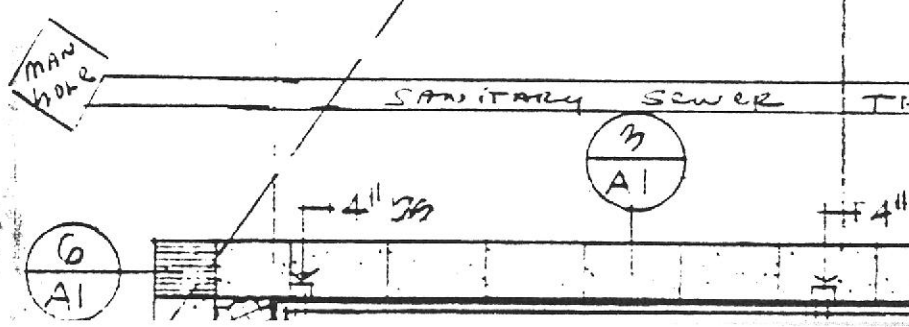
Control
Type

KONTAGE ROAD

EMPLOY



- 2-14' ROLL AWAY CHAIN LINK GATES (TYP. 2 PLACES)
- NEW SIDEWALK
- NEW PLANTING AREA
- 6' HIGH CHAIN FENCE TYP.
- BUILDING SIGN 12' x 15'



1" = 10' 0"

4
AI

S79° 23' 30" N

299.60

19'-0" TYP.

TRASH

1
AI

LANDSCAPE N

Exits shall be illuminated at any time the building is occupied with light having an intensity of not less than one foot candle at floor level. Exit signs shall be placed over every required exit doorway and wherever required to clearly indicate the direction of egress.

Exit doors shall be openable from the inside without the use of a key or any special knowledge or effort, or if the latch is readily distinguishable as locked, may be provided with a durable, conspicuous sign having letters at least one inch high stating, "THIS DOOR TO REMAIN UNLOCKED DURING BUSINESS HOURS."

Provide four (4) 2-A:10-B:C rated fire extinguishers. Locations to be determined by local fire marshal.

Buildings shall be provided with an automatic fire extinguishing system. Design shall be adequate for the intended use but not less than Ordinary Hazard - Group 3. Submit plans and calculations to the City Fire Marshal for approval and permit.

EAST BAY MUNICIPAL UTILITY EASEMENT

PAVED AREA FOR PARKING & TRUCK STORAGE

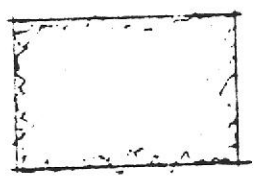
AREA FOR FUTURE IMPROVEMENT

oil

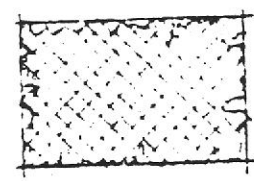
3' WIDE SIDEWALK STRIP & OFFICE AREA TYP. WHERE SHOWN HEAVY BROOM FINISH

220'-0"

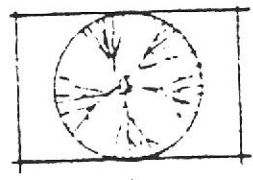
GAS PUMP ISLAND WITH CONCRETE PAD FOR INSTALLATION OF PUMPS AND STORAGE TANKS COORDINATE WITH OWNER



HEDERA BALTICA ALTE W/ RAFFIQULEPIE IN



GLORIOSUS ANCHOR ALTERNATE W/SYSGIEN



A LIQUID AMBOR PAL BRUNUS CERASIFERA FLOWERING PLUM

1. CONTRACTOR TO INSTALL SYSTEM IN ACCORDANCE
2. CONTRACTOR TO COORDINATE WATER IRRIGATION MEASUREMENT WITH OWNER

4" 75

4" 75

PARAPET WALL

4" 75



EXISTING BUILDING

LANDSCAPE NOTES

HEDERA BALTICA ALTERNATE
W/ RAFFICOLEFIE INKA

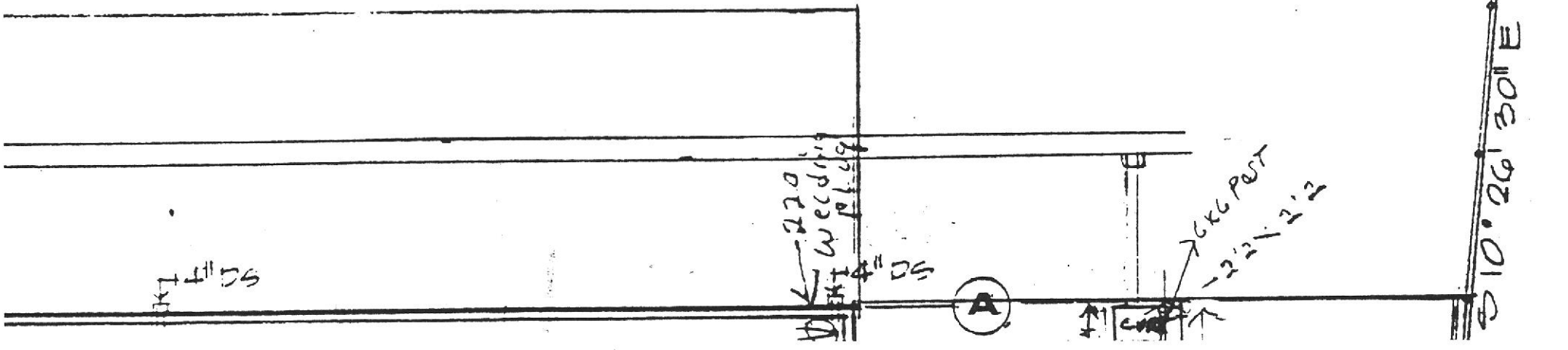
GLORIOSUS ANCHOR BAY
ALTERNATE W/SYSGIEM BUSH CHERRY

6' HIGH CHAIN LINK FENCE
TYP. WHERE SHOWN

A LIQUID AMBOR PALO ALTO AND
BRUNUS CERASIFERA ATROPURPUREA
FLOWERING PLUM

CONTRACTOR TO INSTALL IRRIGATION
SYSTEM IN ACCORDANCE WITH IRRIGATION PLAN

CONTRACTOR TO COORDINATE LOCATION OF
WATER IRRIGATION METER AND TIMER
WITH OWNER



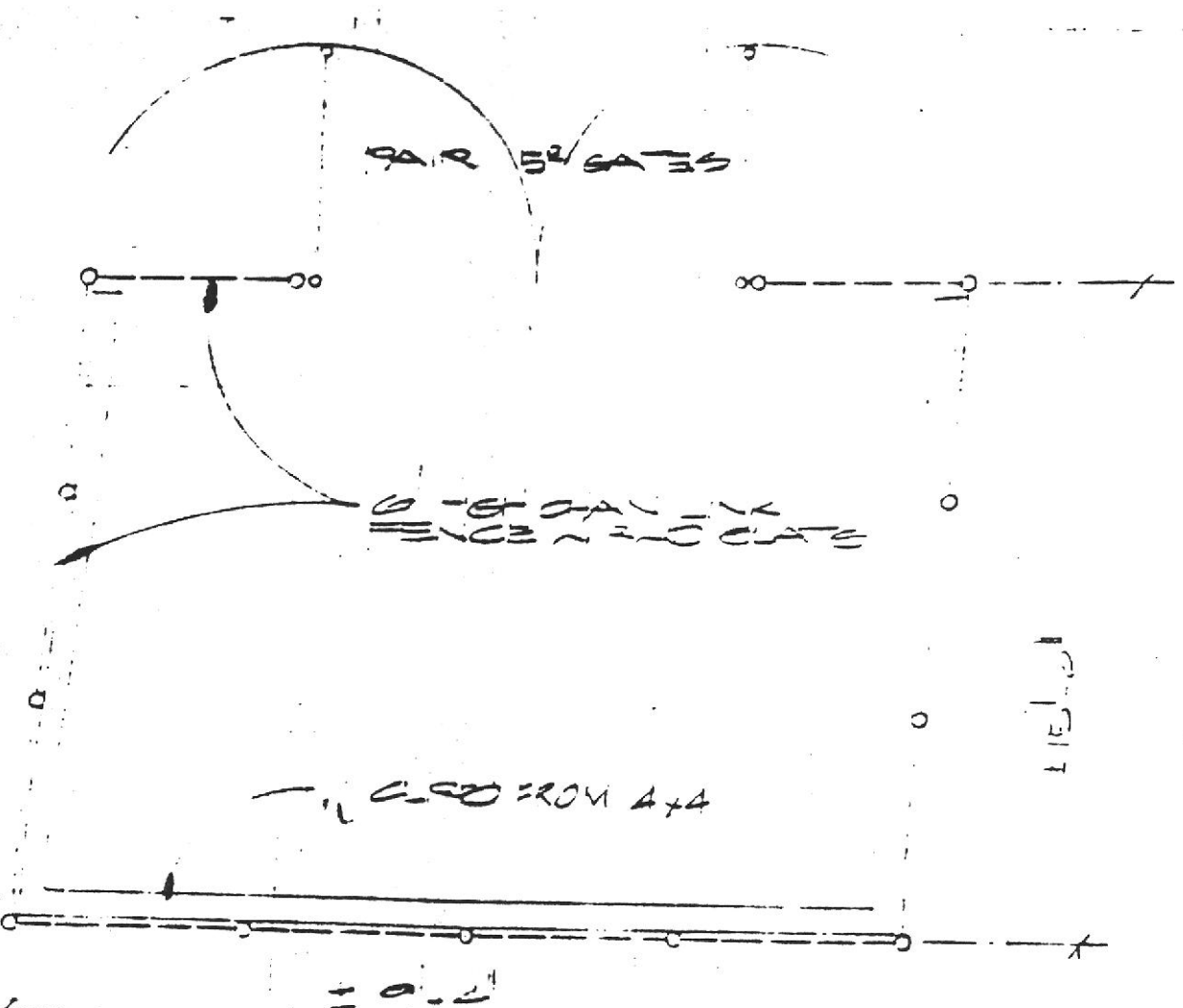
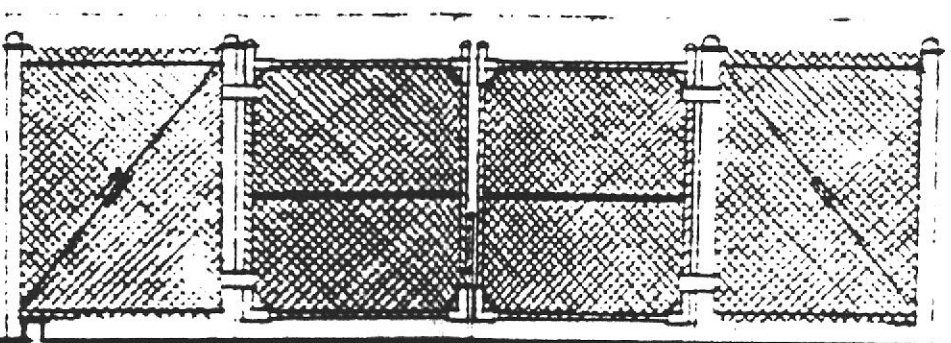
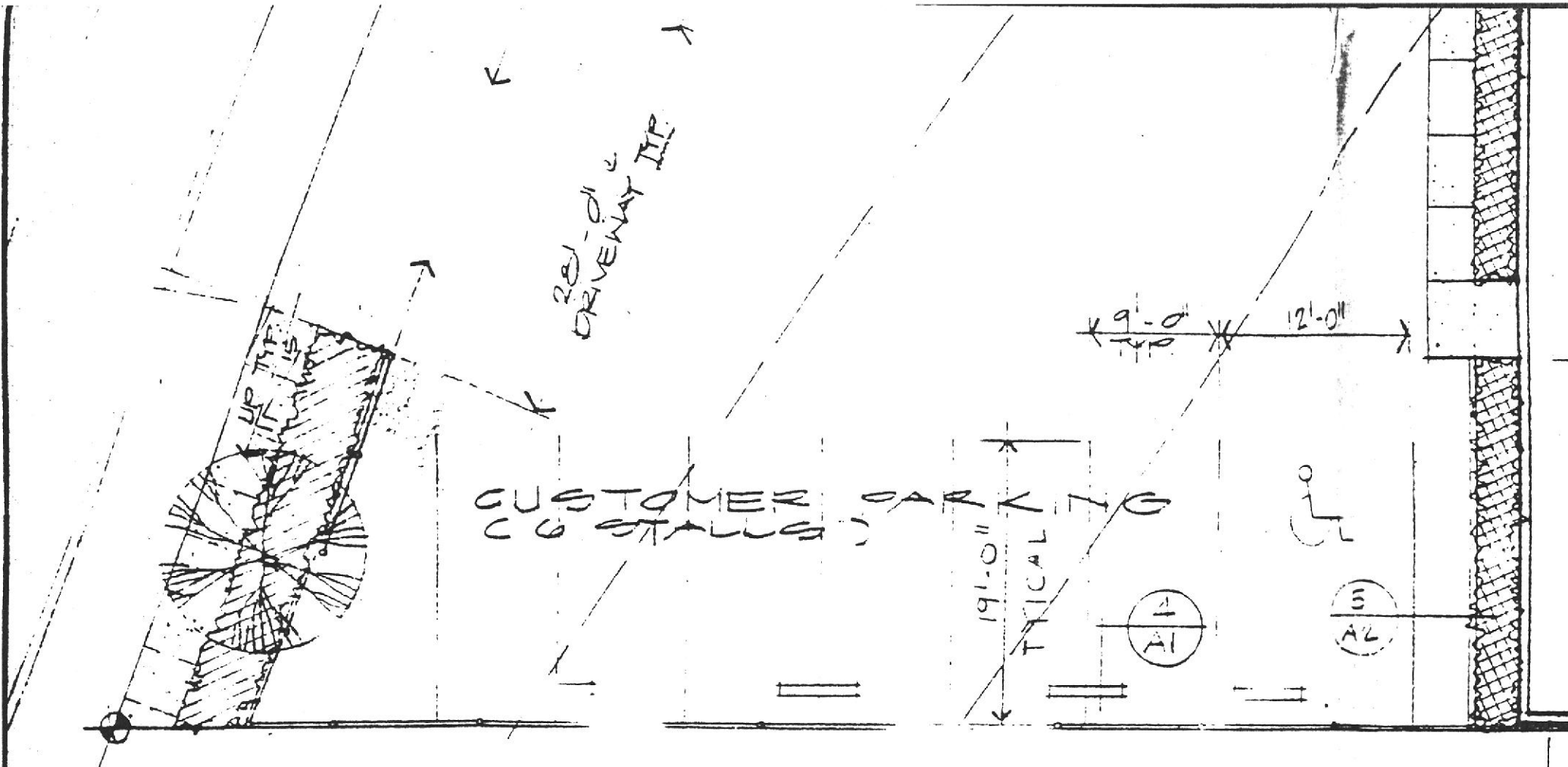
152.24'
S 10° 26' 30" E

SCAFFOLD

2x2x2
W/ 4" DS
PL 1.9

6x6 POST
2x2x2

A



SEEDED OR HEAVY BROOM FINISH/SEE SITE PLAN

TROWED V-S WHERE

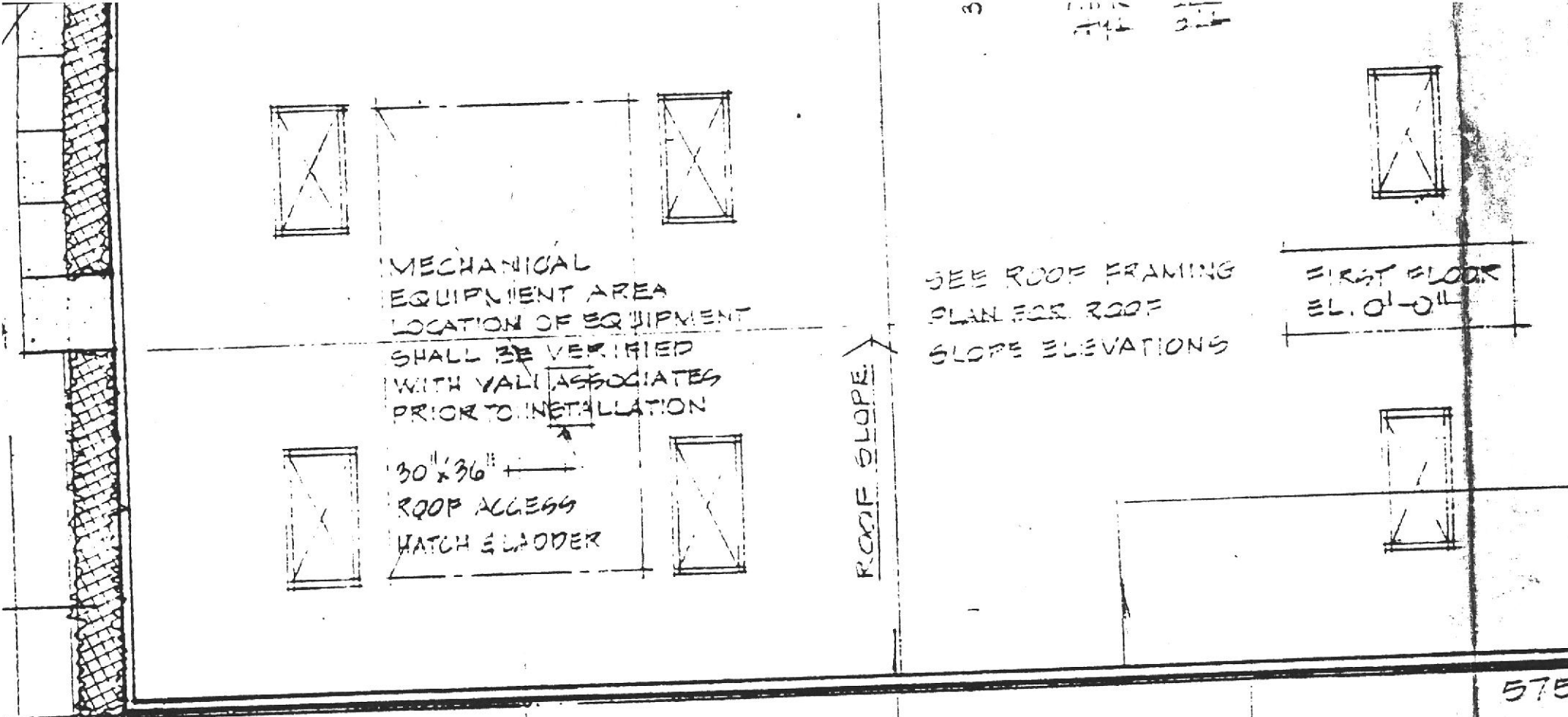
CONTROL JOINT (CJ)

SEEDED OR BROOM FINISH/SEE SITE PLAN

2x4 ROWD W AT 2' ONE 20'-0" O.C. M

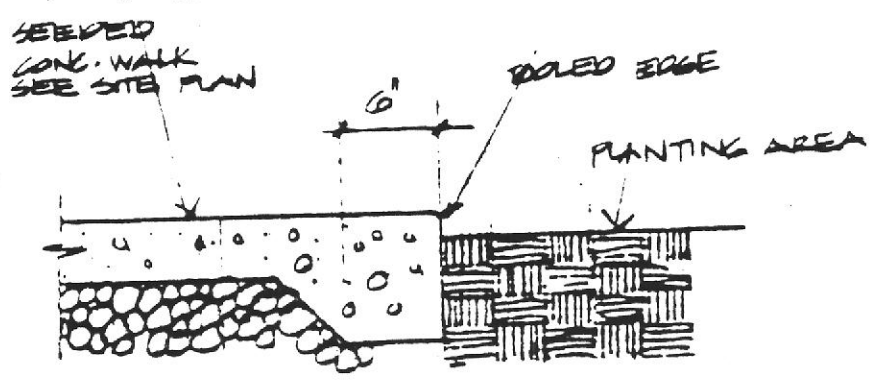
EX3 SIGN JOINT (EJ)

2 JOINTS 1 1/2' = 1'-0"



575

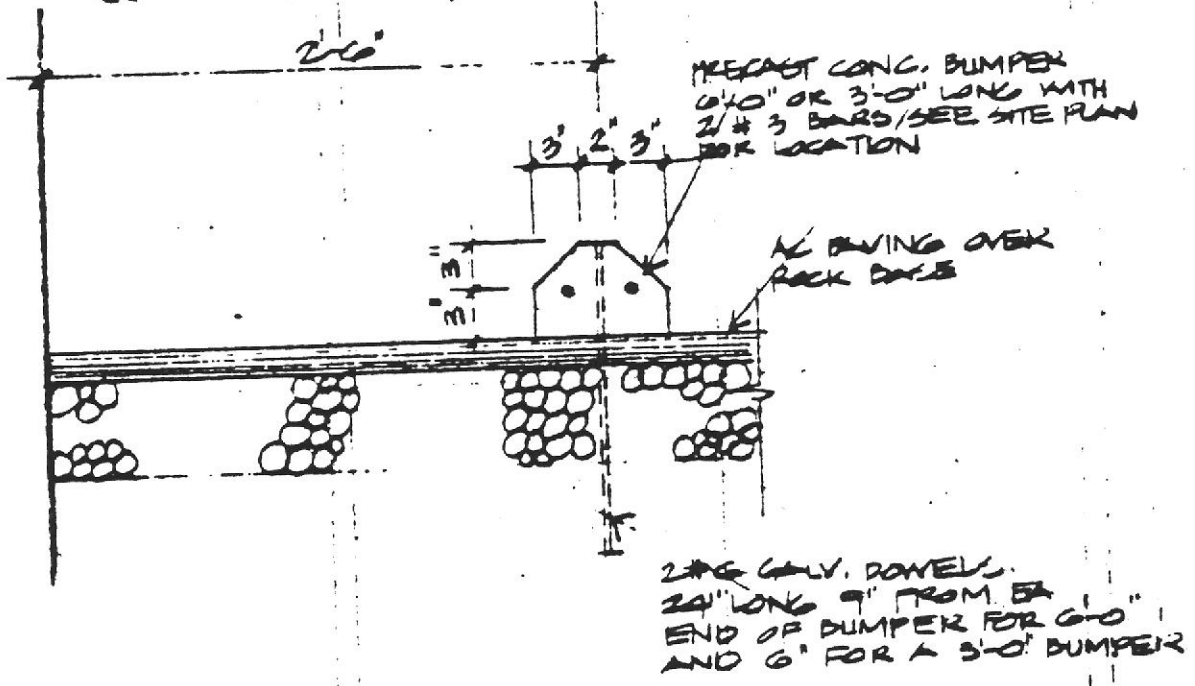
1 2 3 4
EXISTING BUILDING



PLANTER AREA

ROLED V-GROOVE WHERE OCCURS (SEE PLAN)

3 SIDEWALK 1" = 1'-0"



CONC RAMP HENRICHSEN

4 BUMPER 1" = 1'-0"

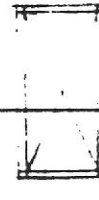
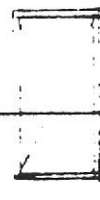
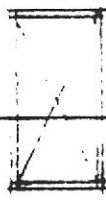
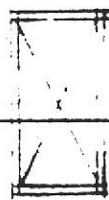
1 1/2" = 1'-0"

TYPICAL 13 PLACES



BUILT UP ROOFING
CONGLAS ND-200 CAP
OR APPROVED EQUAL

ROOF SLOPE



575' 05' 47" W

255.51'

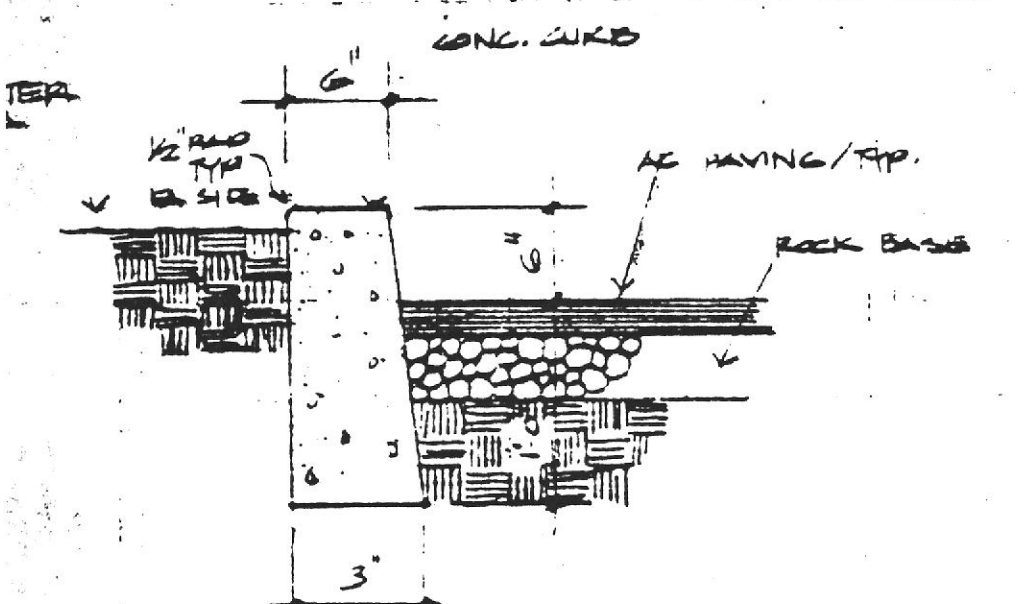
5

6

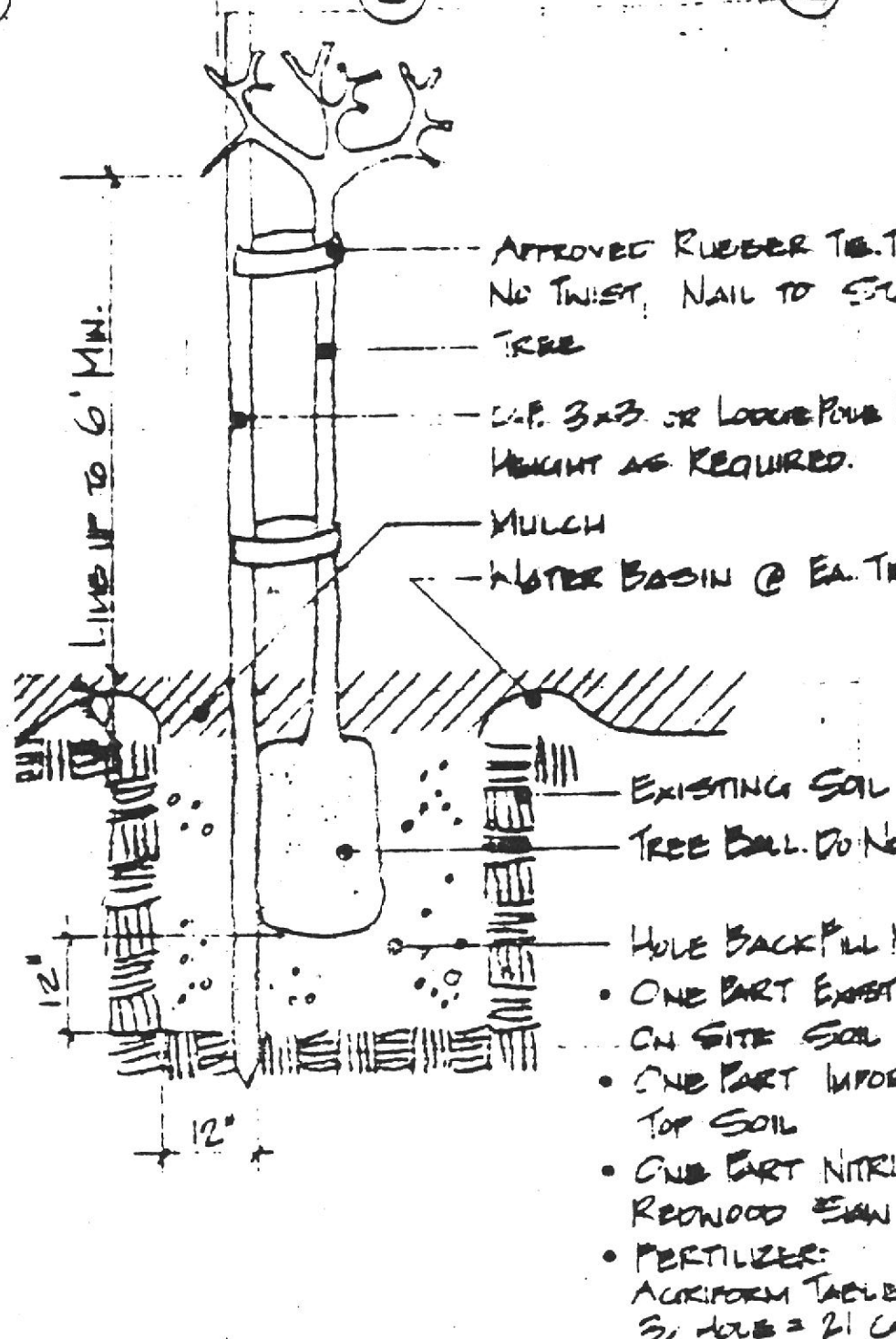
7

8

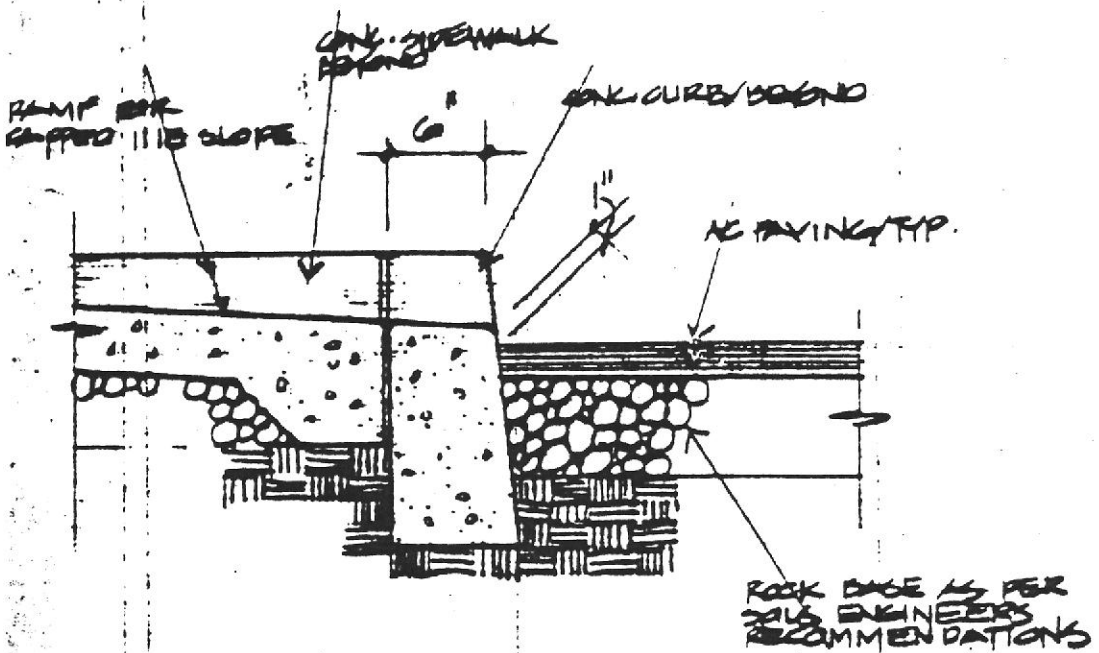
9



5 PLANTER AREA 1" = 1'-0"

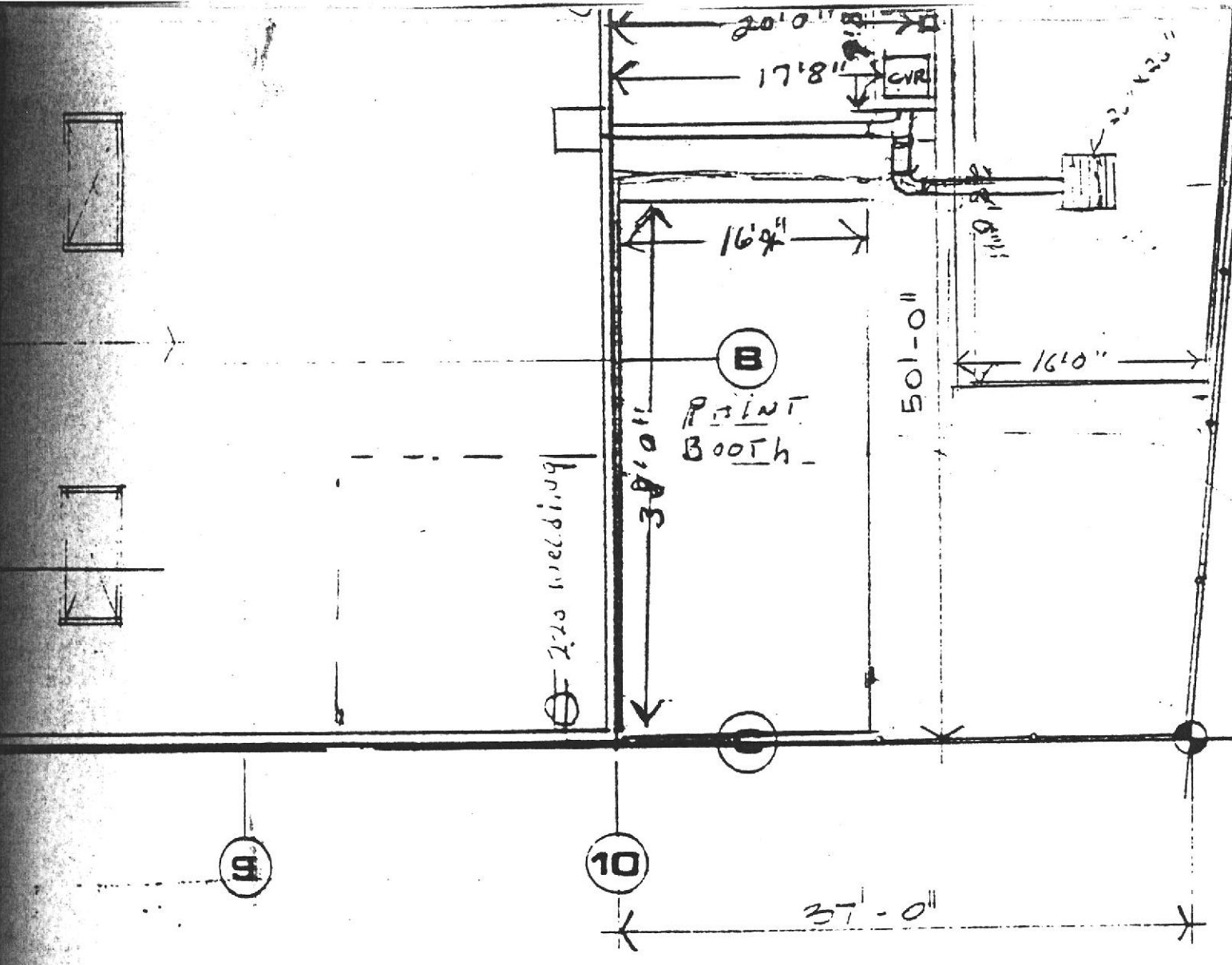


7 LANDSCAPING



6 RAMP 1" = 1'-0"

DETAIL



PLOT PLAN

1" = 10'-0"



APPROVED RUBBER TIE TWO/TREE
NO TWIST, NAIL TO STAKE
TREE

2" P. 3x3 OR LOOSE PINE FINE
MOUNT AS REQUIRED.

MULCH
WATER BASIN @ EA. TREE

- EXISTING SOIL
- TREE BALL DO NOT BREAK

- HOLE BACK FILL MIX
 - ONE PART EXISTING ON SITE SOIL
 - ONE PART IMPORTED TOP SOIL
 - ONE PART NITRIFIED REDWOOD ESWAN CUST
- FERTILIZER:
ACRIFORM TABLETS
3: 100g 2: 1 GRAM

1. MULCH ALL PLANTING AREAS 3" DEEP
USE WILKINSON BARK - GEORGIA FOREST PRODUCTS OR EQUAL

2. PROVIDE AUTOMATIC SPRINKLER IRRIGATION SYSTEM FOR ALL PLANTED AREAS

DETAILS