

WAY

71.82

165.96

165.31

164.98

163.29

162.22

165.31

164.98

163.29

162.22

161.74

166.23

165.5

164.8

163.5

162.85

HOUSE

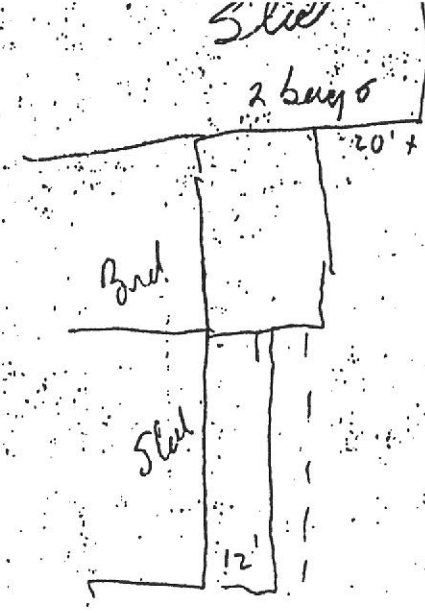
GARAGE

2468
(7787 SF)

BAKERY & LOADING DOCK

25 STORY
(2835 SF)

18996 (FOUNDATION)
20735
(12600 SF)



Crown Line

Existing Edge of Pavement

Water Meter

Transformer Poles

Water Meter

Conc. Wall & Fence

C.P.

166.46

167.16

166.25

165.9

164.52

165.7

165.5

165.8

164.8

48-8

70

6-5

16-8

6-5
(1164
2084 SF)

48-5

RET WALL 48492

RET WALL 52303

Chain Link Fence on Conc. Wall

81349

54654
10400 SF

7855
(4867 SF)

35353
(10705 SF)

83207
5600 SF

PROPOSED COVERED
LOUNGE NO. 10
83833

Location in correct
This should be
moved North about
Taylor
6-7-74

SHED

35584
Moved bldg
25 x 30
or 14 x 21

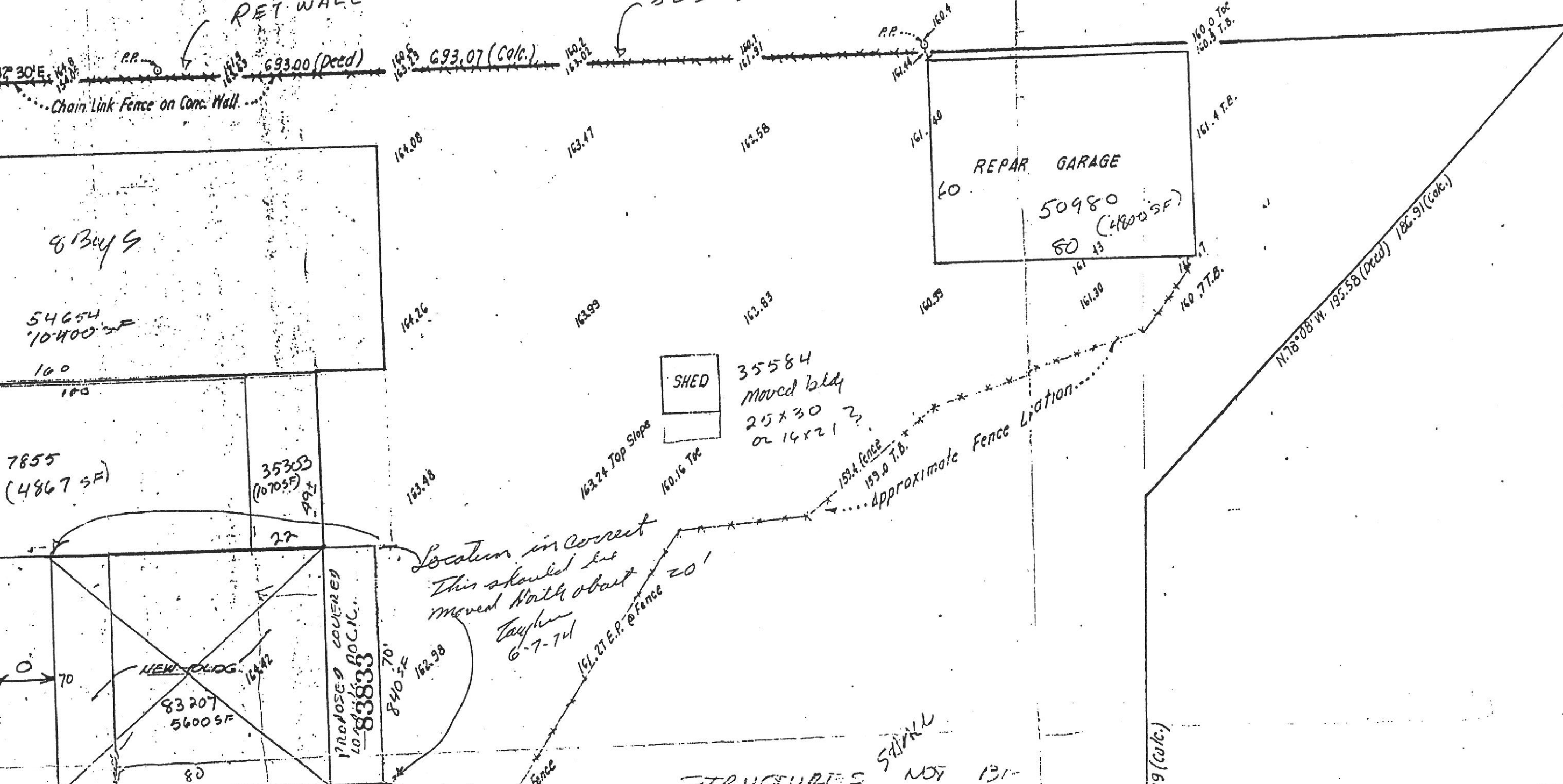
REPAIR GARAGE

50980
80 (4800 SF)

STRUCTURES NOT BUILT

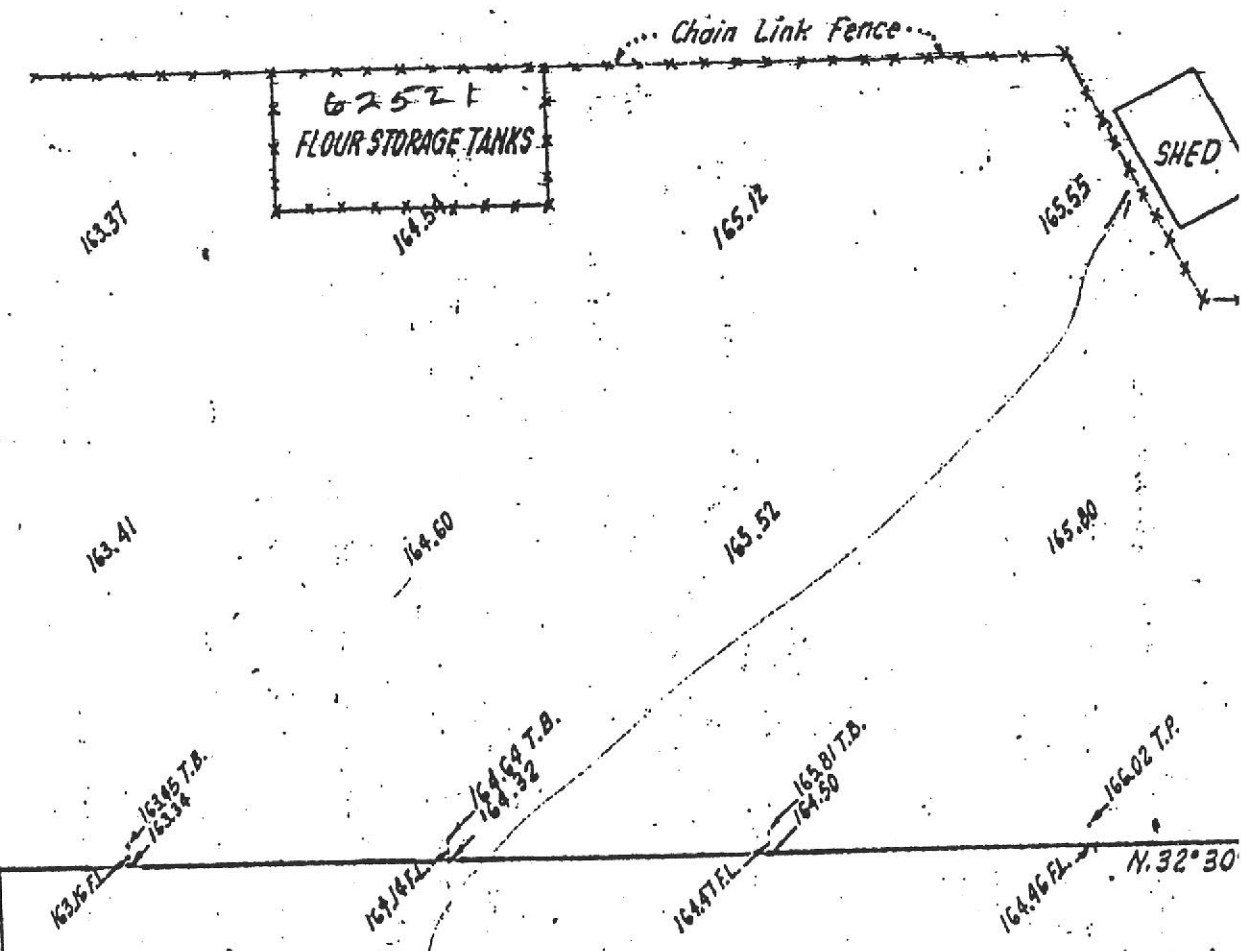
SHALL

39 (Calc.)



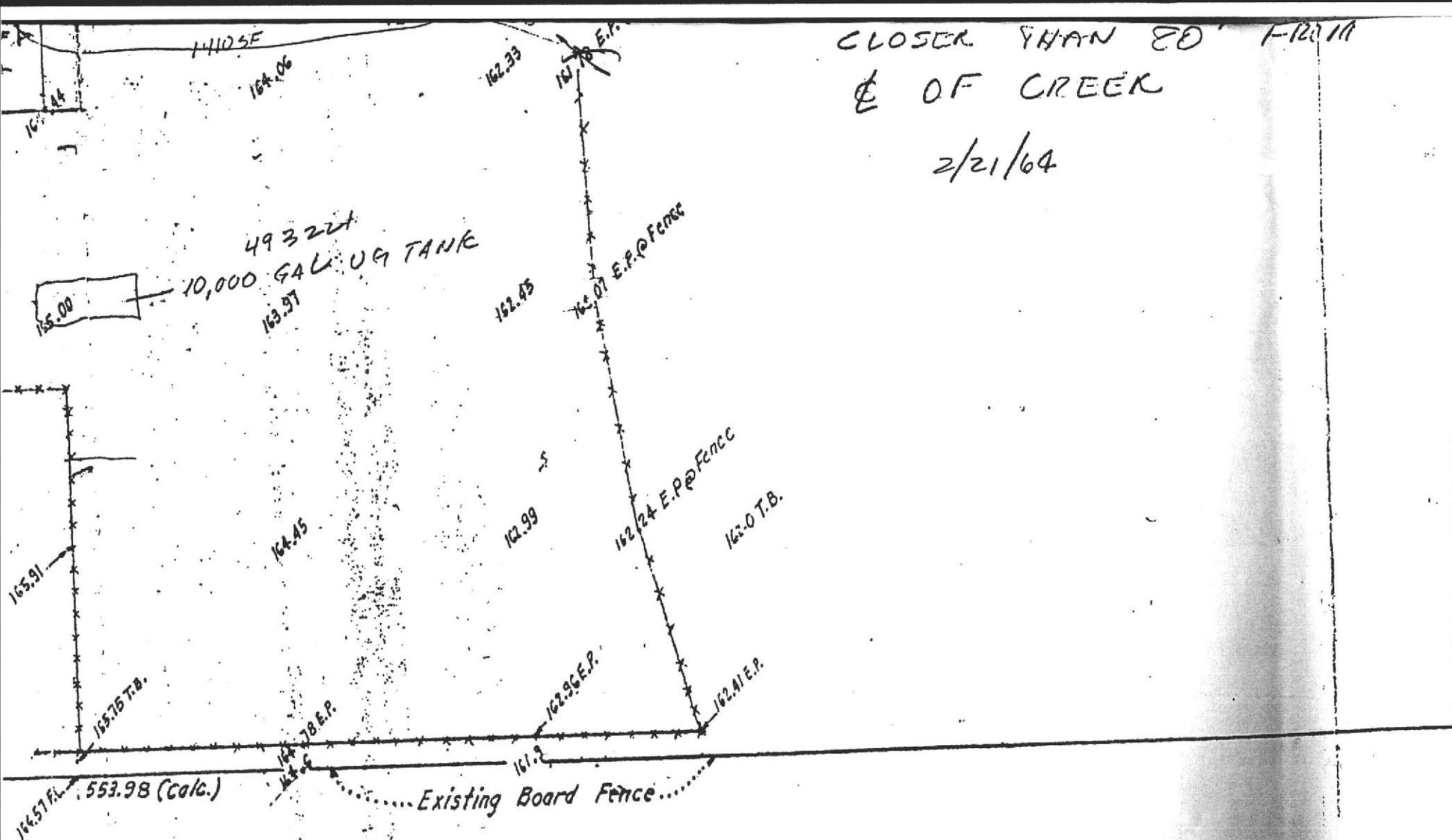
GROVE

68859 ENCLOSURE 92' x 20' 4"
(3720 SF) 34491 CANOPY ENDWALLS CLOSED IN
52251 ENCLOSURE 86' x 22'



BENCH MARK
"a" Cut in top of curb by power pole in front of Presbyterian Church. Elev. 159.80

48528 moved storage Bldg
90524 Demolish dually



CLOSER THAN 20' FROM E. OF CREEK
2/21/64

5.59° 30' W. 236.17 (Deed) 240'

34,753 45157

12000 - 13724
16000 - 11029

0-7-55 ? size ? location ?

RECEIVED
NOV

PRELIMINARY ONLY

Notes re previous points added 6-7-74

CIVIL ENGINEERS, INC.

DRAWN BY E.G.
CHECKED BY
SCALE 1" = 30'
DATE SEPTEMBER, 1963

BOUNDARY & TOPOGRAPHIC MAP

FOR: PURITY STORES

HAYWARD,

CALIFORNIA.