



Environmental
Science &
Engineering, Inc.

FACSIMILE

DATE: 4/9/96 TIME: _____

TO: Mr. Tom Peacock/ FROM: Mac Gader
Ms. Susan Hugo ESE, Inc.
Alameda County EHD 4090 Nelson Avenue, Ste J
Concord, CA 94520

FAX #: (510) 337-9335 JOB #: 6935082

SUBJECT: Well decommissioning - Phoenix/Altair STID #307

Number of Pages

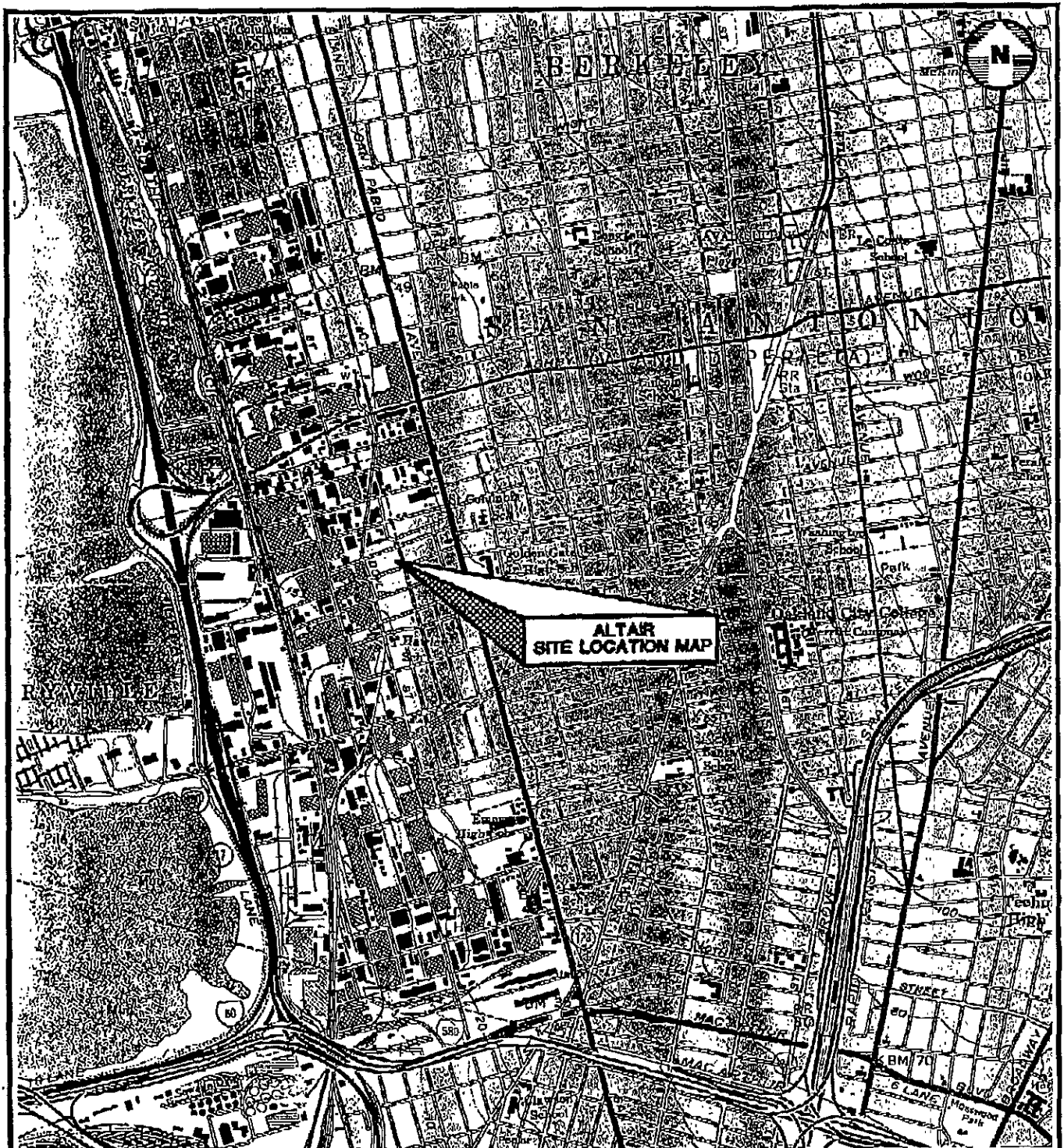
(Including this Cover Sheet)

2

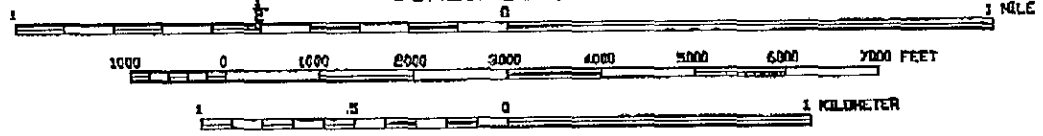
ADDITIONAL MESSAGE:

As discussed yesterday, ESE will
abandon well MW-(PPA) at 1171 Ocean Avenue
in Oakland on 4/11/96. ESE will
begin site work between 1:00 and 2:00 pm.


If you have any questions, please call us immediately at (510) 685-4053.



SCALE 1:24,000



SOURCE: U.S.G.S. 7.5 QUADRANGLE MAP, OAKLAND WEST, CALIF. 1958, PHOTOREVISED 1980.

	Environmental Science & Engineering, Inc.	DATE 06/93	SITE LOCATION MAP	FIGURE NO. 1
	4090 NELSON AVENUE, SUITE J CONCORD, CA 94520	REVISED 10/93		ALT AIR 1171 OCEAN AVENUE OAKLAND, CALIFORNIA

SINGLE FAMILY HOMES

CHURCH

ST. COLUMBIA
CHURCH PARKING
LOT

EVACUATION AREA
FOR LEVEL 1

EVACUATION
AREA FOR LEVEL 2

MARSHALL STREET

FIRE
ESCAPE
APPROX
JULY 1987

#1 2-LEVEL BUILDING
#2 1ST LEVEL-STORE FRONT
WHSE.
#3 2ND LEVEL-OFFICE
ADMINISTRATION
#4
#5
#6
#7
#8
#9
#10
#11
#12
#13
#14
#15
#16
#17
#18
#19
#20
#21
#22
#23
#24
#25
#26
#27
#28
#29
#30
#31
#32
#33
#34
#35
#36
#37
#38
#39
#40
#41
#42
#43
#44
#45
#46
#47
#48
#49
#50
#51
#52
#53
#54
#55
#56
#57
#58
#59
#60
#61
#62
#63
#64
#65
#66
#67
#68
#69
#70
#71
#72
#73
#74
#75
#76
#77
#78
#79
#80
#81
#82
#83
#84
#85
#86
#87
#88
#89
#90
#91
#92
#93
#94
#95
#96
#97
#98
#99
#100

BAYOX INC
1171 OCEAN AVENUE
OAKLAND 94608

UTILITY
EMERGENCY
SHUT OFF

MAIN WATER
SHUT OFF

MAIN WATER
SHUT OFF

OCEAN AVENUE

SINGLE FAMILY HOMES

* NO GAS LINES ARE AT
THIS FACILITY

HAZARDOUS MTL STORAGE

#6 CYLINDER DOCK (PLANT)

LIQUID FILLING
AREA

Specialty
Gas
Dock

HIGH PRESSURE
FILLING AREA
Cylinder Dock

SPRAY
BOOTH

SHOT
BLASTER

N2
TM1100

O2
TM2000

AR
TM6000

#8

CO2

PAINT
STORGE
BIN

Ammonia

Chlorine

UNDER
GROUND

DIESEL
FUEL
TANK

FIRE EXTINGUISHER
LOCATIONS

HYDRANT

