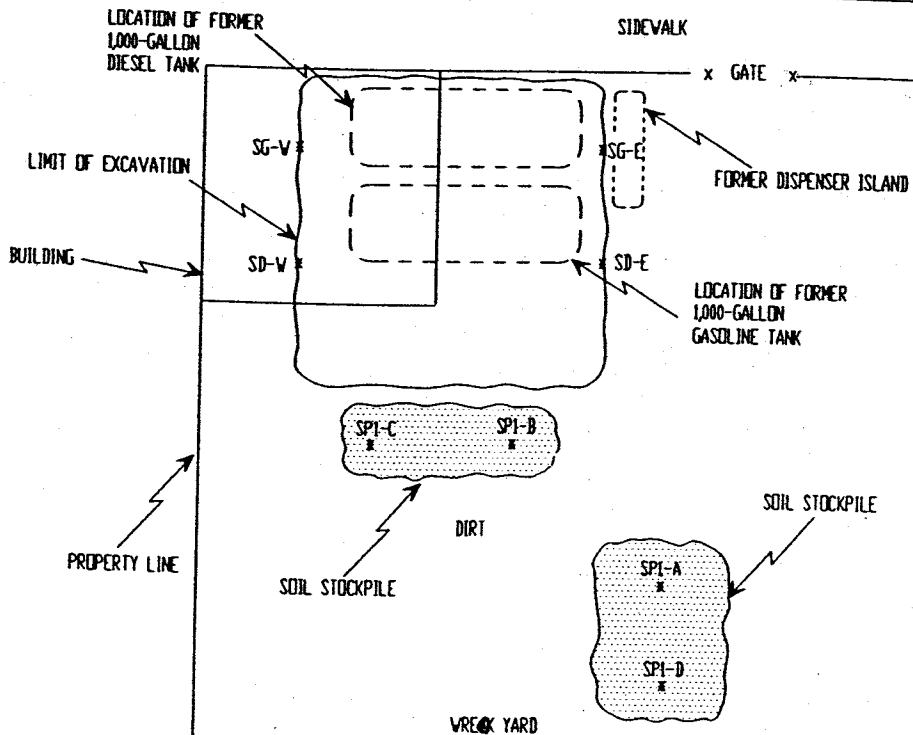
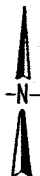


81st Ave



LEGEND

SD-W NAME AND LOCATION OF
* SOIL SAMPLE



0 10
APPROXIMATE IN FEET

TANK PROTECT ENGINEERING

SITE PLAN:
TANK REMOVAL (8/16/96)

ALITA BRAND
968 - 81st AVENUE
OAKLAND, CA 94621

DATE	10/4/96
FIGURE	1
FILE #	383-IN
DRAWN BY	VK
CHECKED BY	

TABLE 1
 SUMMARY OF SOIL SAMPLE ANALYTICAL RESULTS
 (ppm¹)

Sample ID Name	Date	Depth (Feet)	TPHD	TPHG	MTBE	Benzene	Toluene	Ethyl-benzene	Xylenes	Total lead
SD-E	08/16/96	7.5	50	<1.0	<0.05	<0.005	<0.005	<0.005	<0.005	7.5
SD-W	08/16/96	7.5	<1.0	<1.0	<0.05	<0.005	<0.005	<0.005	<0.005	5.0
SG-E	08/16/96	7.5	66	<1.0	<0.05	<0.005	<0.005	<0.005	<0.005	5.2
SG-W	08/16/96	8.0	21	<1.0	<0.05	<0.005	<0.005	<0.005	<0.005	9.1
SP1-A,B,C,D	08/16/96	1.0	340	46 ²	<0.05	<0.005	<0.005	<0.005	<0.005	13

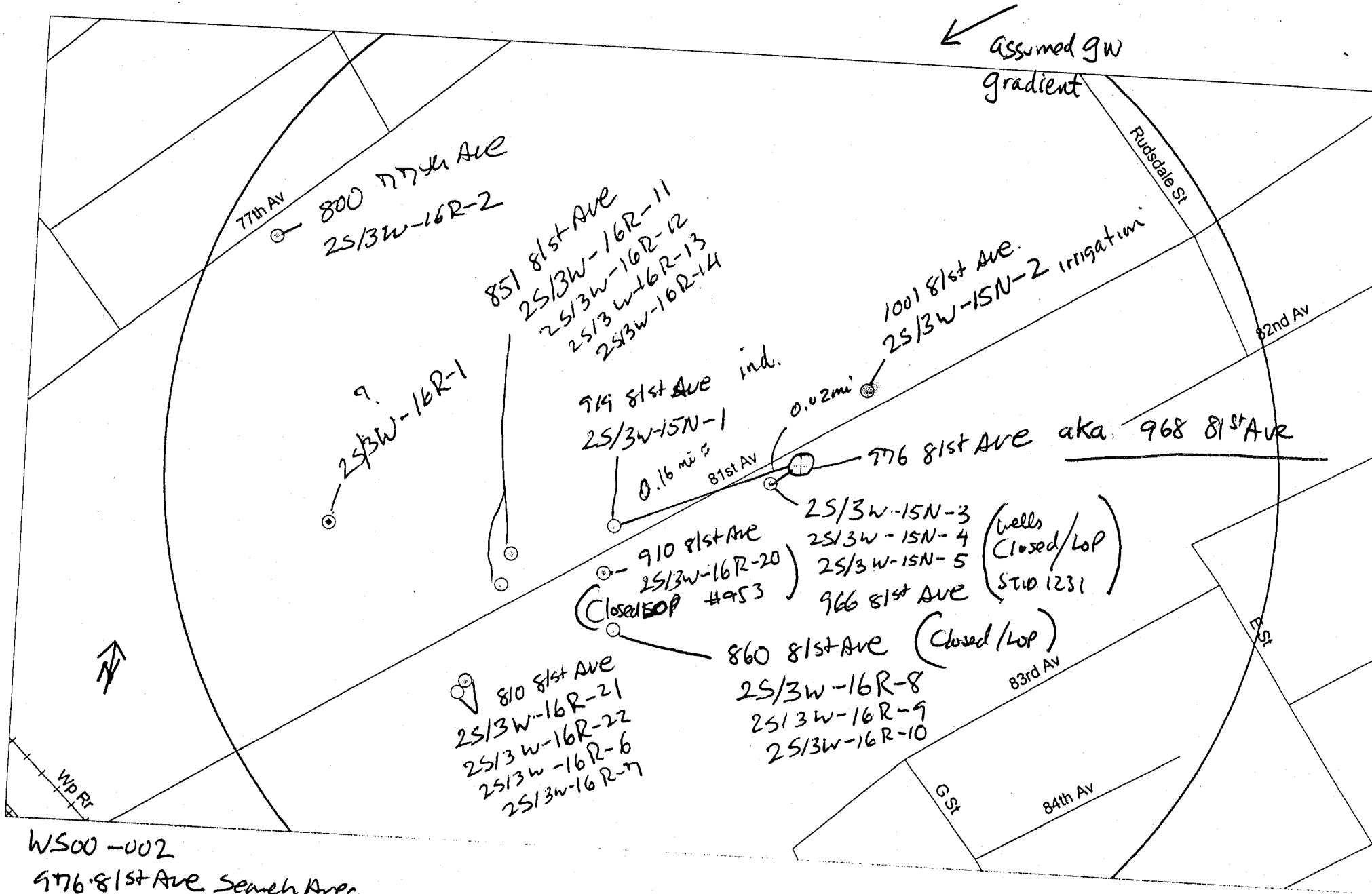
PARTS PER MILLION

TPH-GAS CHROMATOGRAM LAB #HC1520, ALTHOUGH WITHIN THE REPORTING RANGE, DOES NOT MATCH THE TYPICAL GAS PATTERN

TABLE 2
SUMMARY OF GROUNDWATER SAMPLE ANALYTICAL RESULTS
(ppb)¹

Sample ID Name	Date	Depth (Feet)	TPHD	TPHG	MTBE	Benzene	Toluene	Ethyl-benzene	Xylenes	Total lead
WS-1	08/28/96	8.0	8,300	130	<5.0	1.0	<0.5	<0.5	<0.5	<0.005

¹ PARTS PER BILLION



← Assumed gw gradient

77th Av
800 77th Ave
2S/3W-16R-2

851 81st Ave
2S/3W-16R-11
2S/3W-16R-12
2S/3W-16R-13
2S/3W-16R-14

1001 81st Ave
2S/3W-15N-2 irrigation

9.
2S/3W-16R-1

919 81st Ave ind.
2S/3W-15N-1
0.16 mi S

0.02 mi

776 81st Ave aka 968 81st Ave

910 81st Ave
2S/3W-16R-20
(Closed/LOP #4953)

2S/3W-15N-3
2S/3W-15N-4
2S/3W-15N-5
966 81st Ave
(wells Closed/LOP STID 1231)

810 81st Ave
2S/3W-16R-21
2S/3W-16R-22
2S/3W-16R-6
2S/3W-16R-7

860 81st Ave (Closed/LOP)
2S/3W-16R-8
2S/3W-16R-9
2S/3W-16R-10

WS00-002
9776 81st Ave Search Area.