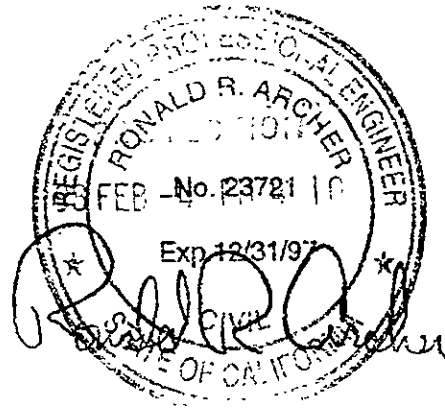


RON ARCHER

CIVIL ENGINEER INC.

CONSULTING • PLANNING • DESIGN • SURVEYING

4133 Mohr Ave., Suite E • Pleasanton, CA 94566
Phone: (510) 462-9372 Fax: (510) 462-4454



OCTOBER 11, 1995

JOB NO 2332

ELEVATIONS OF EXISTING MONITORING WELLS AT THE FORMER CHEVRON ALAMEDA BULK PLANT, LOCATED AT 2001 VERSAILLES AVENUE AT FERNSIDE BOULEVARD, CITY OF ALAMEDA, ALAMEDA COUNTY, CALIFORNIA.

FOR: **BLAINE TECH SERVICES INC.**

BENCHMARK: "FERN"

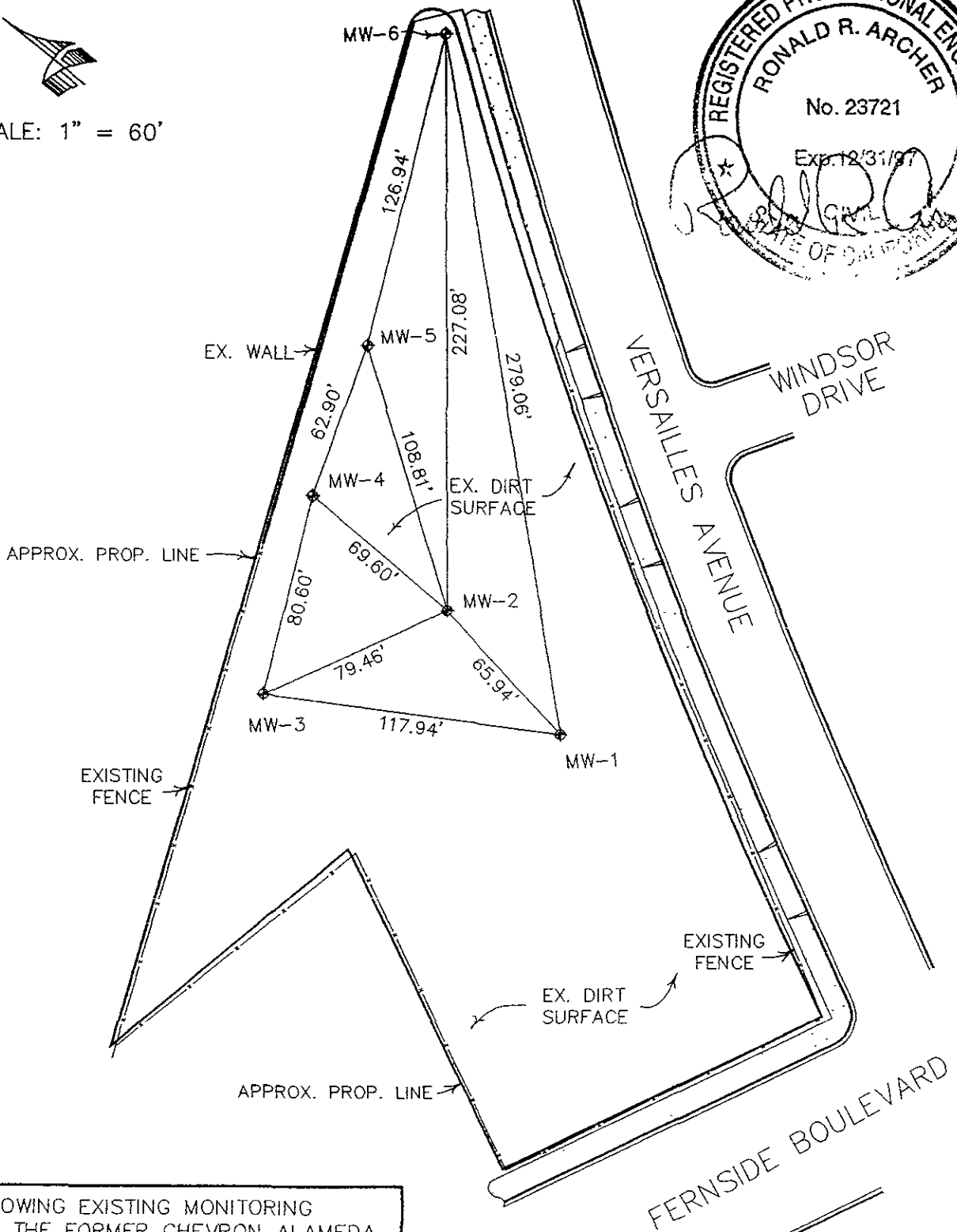
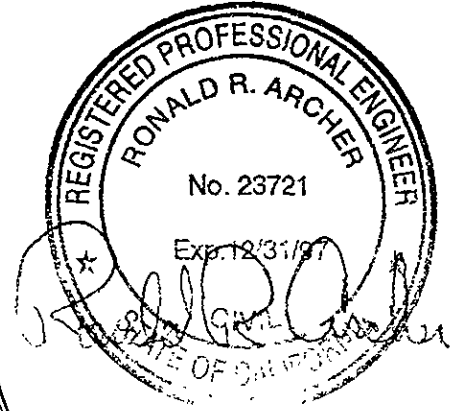
THE TOP OF A U.S.G.S. BRASS DISK SET IN A STANDARD CITY MONUMENT CASING IN THE SIDEWALK, APPROXIMATELY 12 INCHES BELOW GROUND ON THE SOUTHWEST CORNER OF THE INTERSECTION OF FERNSIDE BOULEVARD AND VERSAILLES AVENUE. ELEVATION TAKEN AS 11.584 M.S.L. (N.G.V.D.).

MONITORING WELL DATA TABLE

WELL DESIGNATION	TOP OF PVC LEVATION	GROUND ELEVATION
MW-1	13.60	11.27
MW-2	12.22	9.69
MW-3	14.41	12.31
MW-4	13.70	11.89
MW-5	12.63	10.83
MW-6	13.06	10.74



SCALE: 1" = 60'

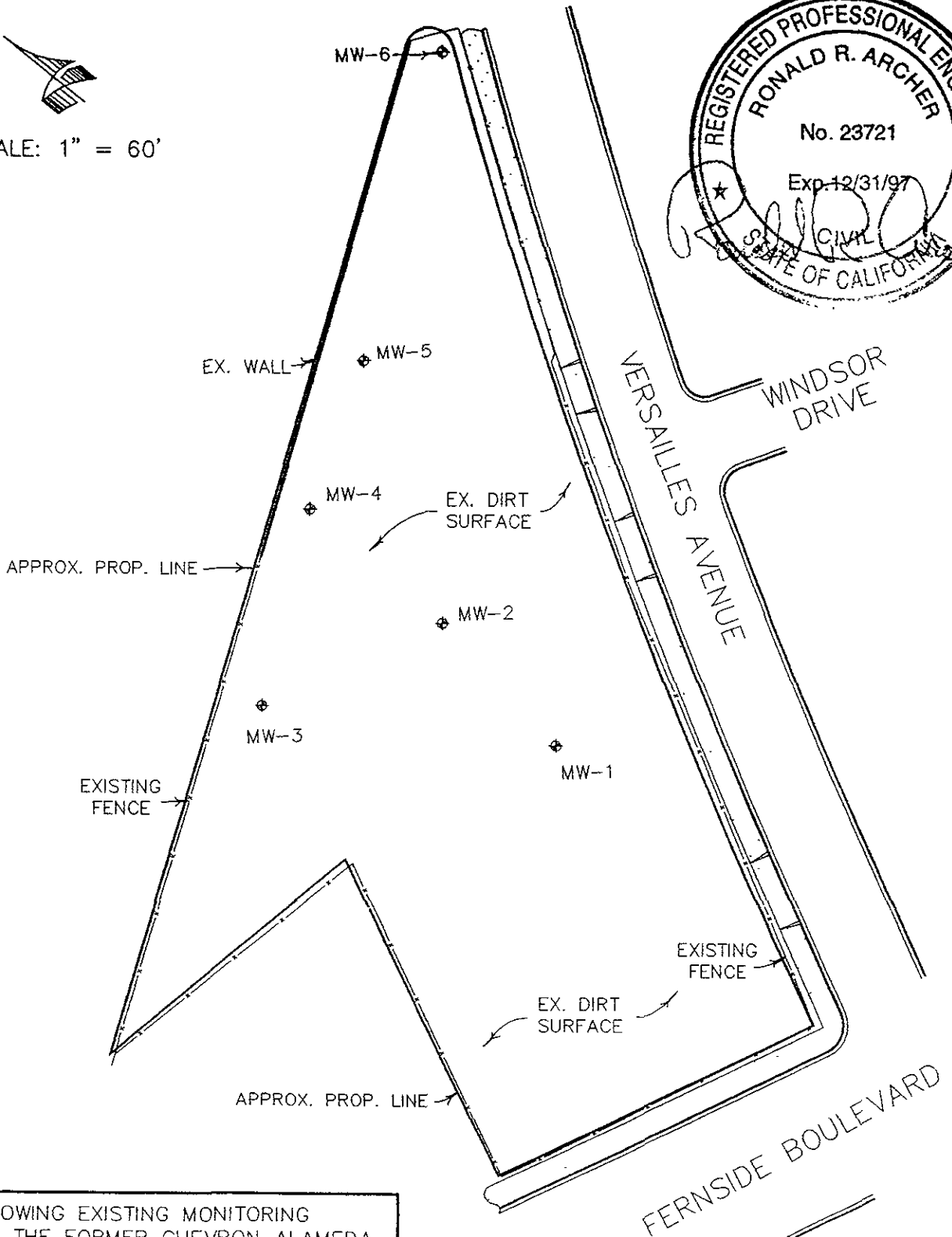


PLAT SHOWING EXISTING MONITORING WELLS AT THE FORMER CHEVRON ALAMEDA BULK PLANT, LOCATED AT 2001 VERSAILLES AVENUE AT FERNSIDE BOULEVARD, CITY OF ALAMEDA, ALAMEDA COUNTY, CALIFORNIA.

FOR: BLAINE TECH SERVICES INC.



SCALE: 1" = 60'



PLAT SHOWING EXISTING MONITORING WELLS AT THE FORMER CHEVRON ALAMEDA BULK PLANT, LOCATED AT 2001 VERSAILLES AVENUE AT FERN SIDE BOULEVARD, CITY OF ALAMEDA, ALAMEDA COUNTY, CALIFORNIA.
FOR: BLAINE TECH SERVICES INC.