

9-14-92



Pile C Coulter Steel

9/14/92



Pile B Coulter Steel

9/14/92



100 yds near railroad track
Coulter Steel
9/14/92 Pile A

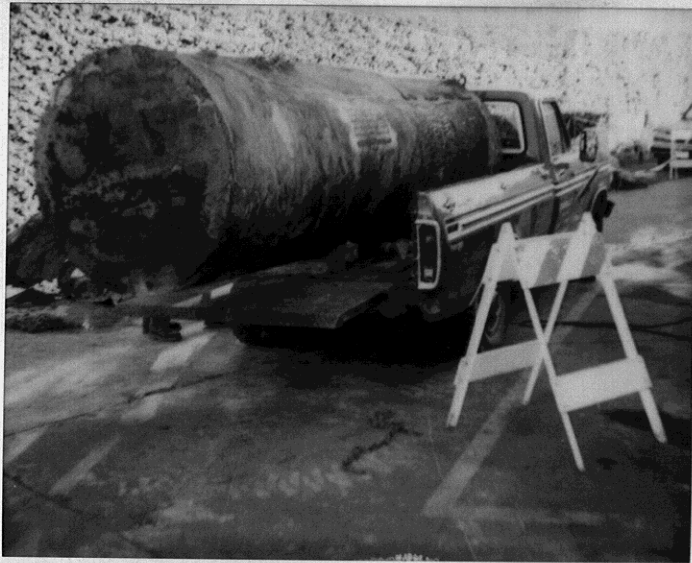
9-14-94



ST101385 1/12/94
tank pit gasoline



1/12/94
1,000 gallon gasoline tank
removed



ST101385
Cutter Steel tank gasoline
1/12/94 removed (1000 gal)