

FAX TRANSMITTAL

To: Susan Hugo

Company: ACEH

From: John Wolf

Company: SCI

Project: Coulter Steel

SCI Job Number: 327.001

Date: 4/1/92

Number of Pages Transmitted: 2 (transmittal included)

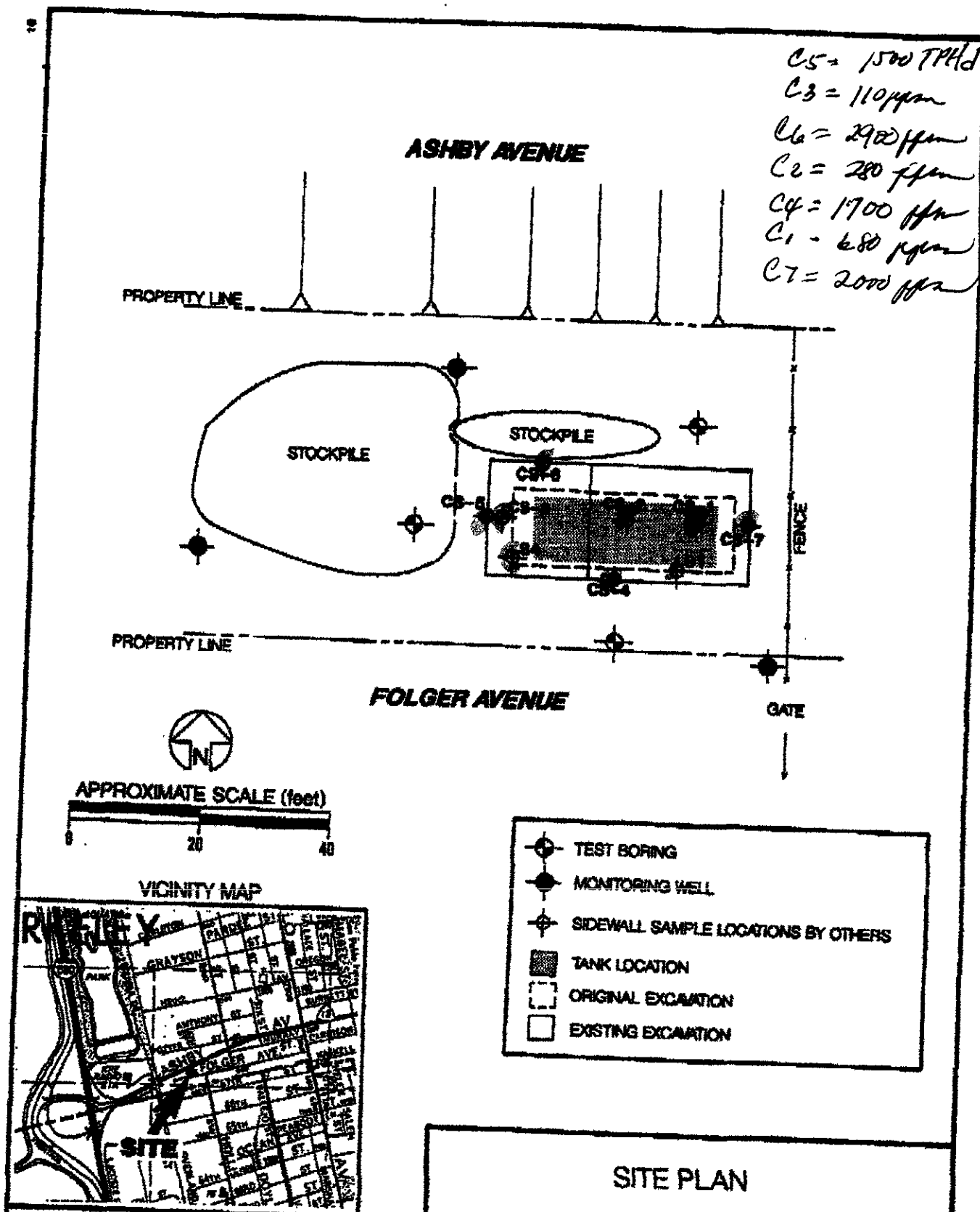
Remarks: Please call if you have any questions

John Wolf
Project Geologist

Subsurface Consultants

171 - 12th Street, Suite 201
Oakland, CA 94607
Telephone: (510) 268-0461
FAX: (510) 268-0137

C5 = 1500 TPH/d
 C3 = 110 ppm
 C6 = 2900 ppm
 C2 = 280 ppm
 C4 = 1700 ppm
 C1 = 680 ppm
 C7 = 2000 ppm



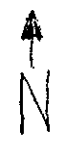
Subsurface Consultants

722 FOLGER AVENUE - BERKELEY, CA.

JOB NUMBER: 727.001 DATE: 3/4/92 APPROVED: *[Signature]*

PLATE 1

EMERGENCY SAFETY MAP



B
A
Y

