

RO 516

C A M B R I A

May 12, 2005

Mr. Don Hwang  
Alameda County Department of Environmental Health  
UST Local Oversight Program  
1131 Harbor Bay Parkway, 2nd Floor  
Alameda, California 94502

RECEIVED  
MAY 10 2005  
CAMBRIA ENVIRONMENTAL TECHNOLOGY, INC.

Re: **Groundwater Monitoring Report - Second Quarter 2005**

Hooshi's Auto Service  
1499 MacArthur Boulevard  
Oakland, California 94602  
Cambria Project No. 129-0741



Dear Mr. Hwang:

On behalf of Ms. Naomi Gatzke, Cambria Environmental Technology, Inc. has prepared this *Groundwater Monitoring Report - Second Quarter 2005* for the above-referenced site. Presented in the report is a summary of the second quarter 2005 activities and results, closure request status, and a description of the anticipated third quarter 2005 activities.

If you have any questions or comments regarding this report, please call me at (510) 420-3314.

Sincerely,  
**Cambria Environmental Technology, Inc.**

Matthew A. Meyers  
Project Geologist

Attachments: *Groundwater Monitoring Report - Second Quarter 2005*

cc: Ms. Naomi Gatzke, 1545 Scenicview Drive, San Leandro, California 94577

**Cambria  
Environmental  
Technology, Inc.**

5900 Hollis Street  
Suite A  
Emeryville, CA 94608  
Tel (510) 420-0700  
Fax (510) 420-9170

## GROUNDWATER MONITORING REPORT - SECOND QUARTER 2005

Hooshi's Auto Service  
1499 MacArthur Boulevard  
Oakland, California 94602  
Cambria Project No. 129-0741

May 12, 2005



### INTRODUCTION

On behalf of Ms. Naomi Gatzke, Cambria Environmental Technology, Inc. (Cambria) has prepared this *Groundwater Monitoring Report – Second Quarter 2005* for the above-referenced site (Figure 1). Presented in this report is a summary of the second quarter 2005 groundwater monitoring activities and results, closure request status, and a description of the anticipated third quarter 2005 activities.

In addition to the information presented in this report, four appendices present supporting information and data. Appendix A contains groundwater monitoring field data sheets for this monitoring event. Appendix B contains the analytical laboratory report for the samples collected and submitted by Muskan Environmental Sampling (MES). Appendix C contains graphs of hydrocarbon concentrations versus time. Appendix D contains GeoTracker electronic delivery confirmation documentation.

### SECOND QUARTER 2005 ACTIVITIES

#### Monitoring Activities

**Field Activities:** On April 6, 2005, MES gauged water levels in the site wells (MW-1 through MW-6) and sampled groundwater in monitoring wells MW-1, MW-2, and MW-5 in accordance with the sampling schedule. Field data sheets are presented as Appendix A. The well gauging data has been submitted to the GeoTracker database (Appendix D).

MES followed Cambria's monitoring procedures and protocols, which consisted of the following. Prior to purging, groundwater levels were gauged in the wells to evaluate groundwater elevation and flow patterns at the site. To facilitate groundwater sampling, MES purged three well-casing volumes prior to sampling. MES recorded groundwater pH, conductivity, and temperature, and evaluated reading stabilization. Groundwater samples were collected using clean, disposable bailers and were decanted into the appropriate containers supplied by the analytical laboratory. Samples were labeled, placed in protective foam sleeves, stored on crushed, water-based ice at or below 4 degrees Celsius and transported under chain-of-custody to the laboratory.

# C A M B R I A

**Sample Analyses:** Groundwater samples were analyzed for total petroleum hydrocarbons as gasoline (TPHg) by modified United States Environmental Protection Agency (EPA) Method SW8015C; and benzene, toluene, ethylbenzene, total xylenes (BTEX), and methyl tertiary-butyl ether (MTBE) by EPA Method SW8021B. The groundwater analytical results are summarized in Table 1. The laboratory analytical report is included as Appendix B. The groundwater analytical results have been submitted to the GeoTracker database (Appendix D).

## Monitoring Results

**Groundwater Flow Direction and Gradient:** Based on field measurements collected on April 6, 2005, groundwater beneath the site generally flows towards the southwest (Figure 1). The groundwater gradient is relatively flat onsite and increases to 0.096 feet/foot towards the southwest corner of the site. Depth to water and groundwater elevation data are presented in Table 1.

**Hydrocarbon Distribution in Groundwater:** Hydrocarbons were detected in the three wells sampled this quarter. The maximum concentration of TPHg was detected in well MW-2 at 21,000 micrograms per liter ( $\mu\text{g/L}$ ). The maximum concentrations of BTEX were also detected in well MW-2 at 400  $\mu\text{g/L}$ , 340  $\mu\text{g/L}$ , 780  $\mu\text{g/L}$ , and 1,700  $\mu\text{g/L}$ , respectively. No MTBE was detected above laboratory detection limits in the sampled monitoring wells. Overall, hydrocarbon concentrations continue to display a decreasing trend (Appendix C).

## CLOSURE REQUEST STATUS

Based on the decreasing concentrations and the stable plume confirmation, Cambria prepared *Closure Request* dated July 21, 2004 and *Clarifications Regarding Closure Request* dated October 6, 2004 for this low risk groundwater site. Although the Alameda County Department of Environmental Health (ACDEH) has not provided a letter commenting on these documents, during phone discussions between Mr. Don Hwang of ACDEH and Matt Meyers of Cambria, Mr. Hwang recommended continuing quarterly monitoring. As a result, Cambria will continue monitoring activities according to the approved monitoring schedule through 2005 pending the ACDEH's review of the above mentioned documents.

Cambria submitted a *Petition for Closure* dated May 6, 2005 to the State Water Resources Control Board (SWRCB) as per their *Site Closure Petition Process - Underground Storage Tank Program Fact Sheet*.

C A M B R I A

**GROUNDWATER MONITORING REPORT - SECOND QUARTER 2005**

**Hooshi's Auto Service  
1499 MacArthur Boulevard  
Oakland, California 94602  
Cambria Project No. 129-0741**

**May 12, 2005**



RECEIVED  
MAY 13 2005  
C E T

*Prepared for:*

Ms. Naomi Gatzke  
1545 Scenicview Drive  
San Leandro, California 94577

*Prepared by:*

Cambria Environmental Technology, Inc.  
5900 Hollis Street, Suite A  
Emeryville, California 94608

*Written by:*



Celina Hernandez  
Senior Staff Geologist

Neal E. Siler, P.G., R.E.A.  
Senior Project Geologist

## ANTICIPATED THIRD QUARTER 2005 ACTIVITIES

### Monitoring Activities

Cambria will gauge water levels in wells MW-1 through MW-6 and collect groundwater samples from wells MW-1, MW-2, and MW-5. Wells MW-1, MW-2, and MW-5 are sampled on a quarterly basis and wells MW-3, MW-4, and MW-6 are sampled on an annual basis (during the fourth quarter). Groundwater samples will be analyzed for TPHg by modified EPA Method SW8015C and BTEX and MTBE by EPA Method SW8021B. Detected MTBE concentrations will be confirmed by EPA Method SW8260B. Cambria will prepare a groundwater monitoring report summarizing the monitoring activities and results.



### Site Closure Activities

Cambria requests a meeting with the ACDEH as soon as possible, to facilitate regulatory closure for the site.

## ATTACHMENTS

Figure 1 – Groundwater Elevation Contour and Hydrocarbon Concentration Map

Table I – Groundwater Elevation and Analytical Data

Appendix A – Groundwater Monitoring Field Data Sheets

Appendix B – Analytical Results for Groundwater Sampling

Appendix C – TPHg and Benzene Concentration Graphs

Appendix D – Electronic Delivery Confirmations

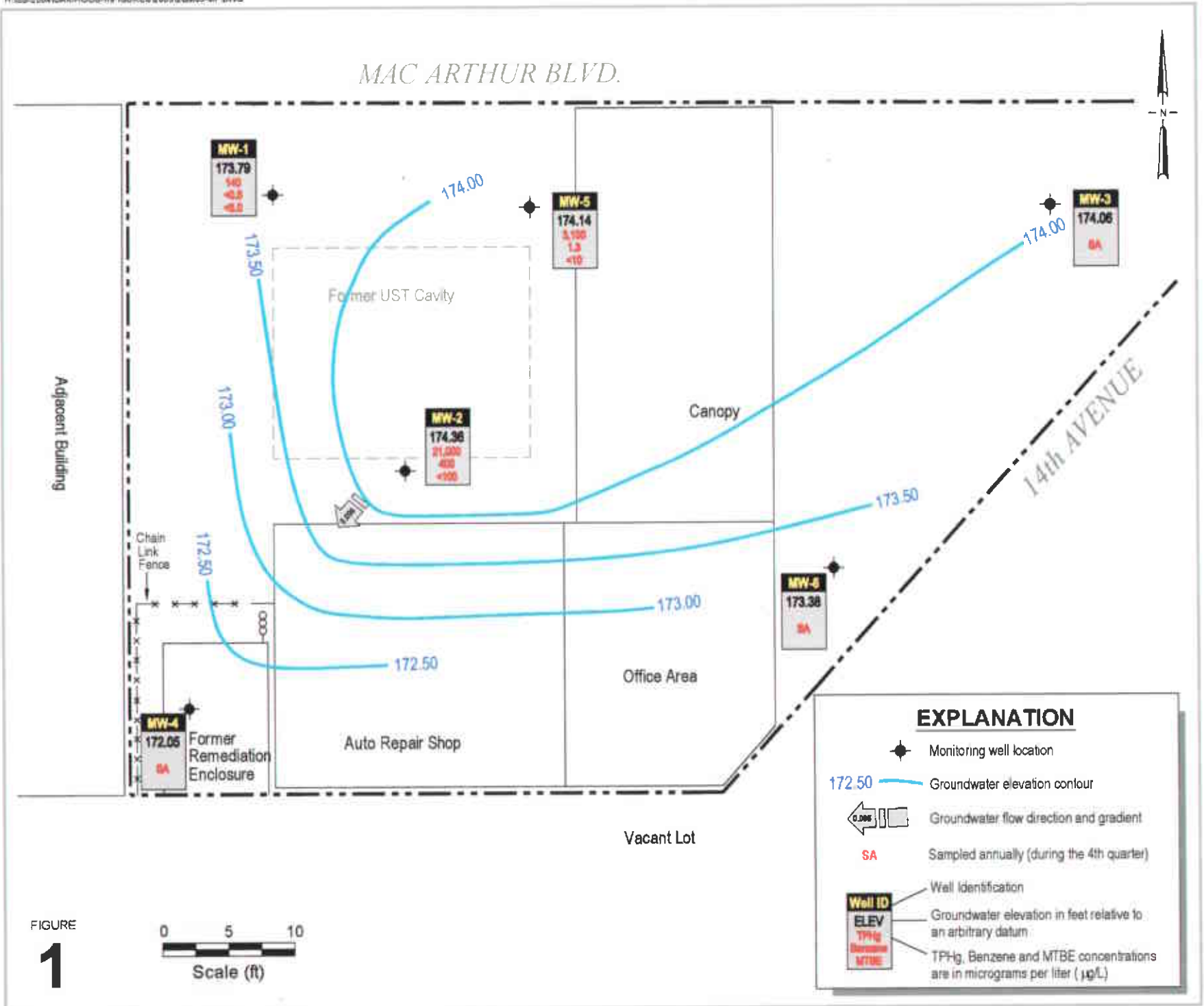
**Hooshi's Auto Service**  
 1499 MacArthur Boulevard  
 Oakland, California

C A M B R I A



**Groundwater Elevation Contour  
 and Hydrocarbon Concentration Map**

April 6, 2005



# CAMBRIA

**Table 1. Groundwater Elevation and Analytical Data - Hooshi's Auto Service, 1499 MacArthur Boulevard, Oakland, California**

Well ID <i>TOC (ft*)</i>	Date	Depth to Groundwater (ft)	Groundwater Elevation (ft**)	SPH Thickness (ft)	TPHg ←	→ (µg/L)					Notes
						Benzene	Toluene	Ethylbenzene	Xylenes	MTBE	
MW-1	1/4/1993	--	--	--	539	130	12	22	13	--	
181.00	4/22/1993	--	--	--	1,130	75	8.0	38	11	--	
	12/27/1994	--	--	--	770	22	6.6	14	21	--	
	6/27/1996	14.11	166.89	--	3,300	260	34	59	170	80	
	12/10/1996	13.71	167.29	--	1,500	84	11	22	32	34	
	5/8/1998	13.85	167.15	--	3,200	300	12	62	36	<120	a
	8/17/1998	14.11	166.89	--	1,700	160	18	32	27	39	a
	11/4/1998	14.28	166.72	--	1,100	11	4.3	3.6	6.5	<50	a
	2/17/1999	13.41	167.59	--	320	200	47	72	75	57	a
	5/27/1999	14.16	166.84	--	2,500	81	12	29	41	<80	a
	8/19/1999	14.18	166.82	--	780	19	<0.5	5.7	4.5	28	a
180.83	11/23/1999	14.43	166.40	--	1,300	24	0.64	1.8	3.3	<100	a
	2/17/2000	13.85	166.98	--	1,300	60	9.1	22	19	22 (16)	a,b
	5/9/2000	14.01	166.82	--	2,700	55	13	19	25	34 (29)	a
	8/15/2000	14.24	166.59	--	--	--	--	--	--	--	
	12/1/2000	8.75	172.08	--	480	6.4	5.9	1.1	3.9	18 (21)	a
180.63	2/8/2001	8.49	172.14	--	64	<0.5	<0.5	<0.5	<0.5	6.1 (5.6)	a,c
	4/9/2001	8.71	171.92	--	--	--	--	--	--	--	
	4/24/2001	7.90	172.73	--	77	<0.5	<0.5	<0.5	<0.5	5.6 (3.7)	c
	8/6/2001	8.83	171.80	--	140	1.7	0.55	<0.5	0.63	5.8 (4.0)	a
	10/22/2001	8.91	171.72	--	120	0.92	<0.5	<0.5	0.59	11(10)	a
	2/1/2002	8.15	172.48	--	<50	<0.5	<0.5	<0.5	<0.5	<5.0	
	4/19/2002	8.63	172.00	--	<50	<0.5	<0.5	<0.5	<0.5	<5.0	
	7/16/2002	8.79	171.84	--	<50	<0.5	<0.5	<0.5	<0.5	<5.0	
	10/3/2002	8.90	171.73	--	110	<0.5	<0.5	<0.5	<0.5	<5.0	f
	1/10/2003	7.93	172.70	--	<50	<0.5	0.74	<0.5	<0.5	<5.0	
	4/21/2003	8.17	172.46	--	<50	<0.5	<0.5	<0.5	<0.5	<5.0	

# CAMBRIA

**Table 1. Groundwater Elevation and Analytical Data - Hooshi's Auto Service, 1499 MacArthur Boulevard, Oakland, California**

Well ID <i>TOC (ft*)</i>	Date	Depth to Groundwater (ft)	Groundwater Elevation (ft**)	SPH Thickness (ft)	TPHg ←	→ (µg/L)					Notes	
						Benzene	Toluene	Ethylbenzene	Xylenes	MTBE		
<i>MW-1 cont'd</i>	7/9/2003	8.92	171.71	--	<50	<0.5	<0.5	<0.5	<0.5	<5.0		
	10/7/2003	9.13	171.50	--	<50	<0.5	<0.5	<0.5	<0.5	<5.0		
	1/22/2004	8.20	172.43	--	<50	<0.5	<0.5	<0.5	<0.5	<5.0		
	4/2/2004	7.09	173.54	--	110	0.52	<0.5	<0.5	<0.5	<5.0	a	
	12/29/2004	6.15	174.48	--	<50	<0.5	<0.5	<0.5	<0.5	<5.0		
	1/27/2005	7.15	173.48	--	<50	<0.5	<0.5	<0.5	<0.5	<5.0		
	4/6/2005	6.84	173.79	--	140	<0.5	0.55	<0.5	0.70	<5.0	c	
<i>MW-2 180.45</i>	1/4/1993	--	--	--	149,000	21,700	25,000	ND	7,760	--		
	4/22/1993	--	--	--	136,300	9,900	15,870	15,300	2,190	--		
	12/27/1994	--	--	--	94,000	11,000	18,000	2,700	16,000	--		
	6/27/1996	12.61	168.64	1.00	--	--	--	--	--	--		
	12/10/1996	11.10	169.55	0.25	--	--	--	--	--	--		
	5/8/1998	10.81	169.66	0.03	--	--	--	--	--	--		
	8/17/1998	12.16	168.31	0.02	--	--	--	--	--	--		
	11/4/1998	12.61	167.86	0.02	--	--	--	--	--	--		
	2/17/1999	9.82	170.66	0.04	--	--	--	--	--	--		
	5/27/1999	11.07	169.48	0.13	--	--	--	--	--	--		
	8/19/1999	12.79	167.68	0.02	--	--	--	--	--	--		
	<i>180.24</i>	11/23/1999	12.14	168.20	0.12	--	--	--	--	--	--	
		2/17/2000	10.01	170.37	0.18	--	--	--	--	--	--	
		5/9/2000	10.88	169.38	0.03	--	--	--	--	--	--	
		8/15/2000	12.28	167.97	0.01	--	--	--	--	--	--	
		12/1/2000	8.03	172.21	--	260,000	1,100	5,000	1,900	17,000	<100	a
		2/8/2001	7.86	172.38	--	2,900	1.7	14	5.0	140	<5.0	c,d
		4/9/2001	7.95	172.29	--	--	--	--	--	--	--	
		4/24/2001	6.90	173.34	--	56,000	360	980	1,000	4,700	<5.0	a,b
8/6/2001		8.15	172.09	--	54,000	680	1,900	1,500	7,800	<200 (<10)	a,b,j	
10/22/2001		8.22	172.02	--	32,000	420	770	1,100	4,100	<250	a,b	
2/1/2002	8.07	172.17	--	26,000	310	490	920	1,600	<1,000	a		
4/19/2002	8.60	171.64	--	16,000	300	240	1,000	990	<100	a		



# CAMBRIA

**Table 1. Groundwater Elevation and Analytical Data - Hooshi's Auto Service, 1499 MacArthur Boulevard, Oakland, California**

Well ID <i>TOC (ft*)</i>	Date	Depth to Groundwater (ft)	Groundwater Elevation (ft**)	SPH Thickness (ft)	TPHg	Benzene → Toluene → Ethylbenzene → Xylenes → MTBE					Notes
						←	←	←	←	←	
<i>MW-2 cont'd</i>	7/16/2002	8.21	172.03	--	5,700	120	18	340	15	<50	a
	10/3/2002	8.14	172.10	--	4,400	44	16	68	20	<25	a
	1/10/2003	6.98	173.26	--	16,000	300	320	580	830	<100	a,b
	4/21/2003	7.25	172.99	--	12,000	350	260	610	380	<50	a
	7/9/2003	7.99	172.25	--	3,300	51	7.4	47	2.8	<17	a
	10/7/2003	8.21	172.03	--	2,400	93	11	34	22	<50	a
	1/22/2004	7.24	173.00	--	5,900	240	130	350	200	<50	a
	4/2/2004	6.29	173.95	--	37,000	840	1,500	1,300	5,900	<500	a
	12/29/2004	5.37	174.87	--	9,300	240	230	330	880	<50	a
	1/27/2005	6.38	173.86	--	37,000	1,200	1,400	1,300	5,200	<250	a
<b>4/6/2005</b>	<b>5.88</b>	<b>174.36</b>	--	<b>21,000</b>	<b>400</b>	<b>340</b>	<b>780</b>	<b>1,700</b>	<b>&lt;100</b>	<b>a</b>	
<i>MW-3 179.94</i>	1/4/1993	--	--	--	1,610	772	14	11	ND	--	
	4/22/1993	--	--	--	3,040	980	34	19	16	--	
	12/27/1994	--	--	--	2,600	180	9.0	7.2	13	--	
	6/27/1996	13.20	166.74	--	2,000	22	2.9	11	7.4	56	
	12/10/1996	13.13	166.81	--	970	<0.5	<0.5	<0.5	<0.5	24	
	5/8/1998	13.03	166.91	--	780	3.7	2.1	1.1	2.4	<32	a
	8/17/1998	13.22	166.72	--	870	2.8	<0.5	<0.5	3.7	<5.0	b,c
	11/4/1998	13.31	166.63	--	770	1.6	4.4	2.0	6.9	<30	c
	2/17/1999	12.89	167.05	--	650	6.2	3.4	1.5	2.6	<5.0	b,c
	5/27/1999	12.32	167.62	--	570	1.5	1.2	0.72	1.1	<20	a
<i>179.55</i>	8/19/1999	13.19	166.75	--	830	<0.5	1.9	<0.5	1.3	<20	c,d
	11/23/1999	13.26	166.29	--	900	<0.5	1.8	0.56	1.4	<20	c,d
	2/17/2000	12.78	166.77	--	250	<0.5	1.5	<0.5	0.62	<5.0	d
	5/9/2000	12.92	166.63	--	690	<0.5	2.1	0.85	1.6	<5.0	a
	8/15/2000	13.19	166.36	--	610	<0.5	2.3	0.75	1.2	<5.0	c,d
	12/1/2000	7.50	172.05	--	120	<0.5	0.90	0.65	0.62	<5.0	c,d
	2/8/2001	7.20	172.35	--	87	<0.5	<0.5	<0.5	<0.5	<5.0	c,d
	4/9/2001	7.33	172.22	--	<50	<0.5	<0.5	<0.5	<0.5	<5.0	
	8/6/2001	7.61	171.94	--	<50	<0.5	<0.5	<0.5	<0.5	<5.0	

# CAMBRIA

**Table 1. Groundwater Elevation and Analytical Data - Hooshi's Auto Service, 1499 MacArthur Boulevard, Oakland, California**

Well ID <i>TOC (ft*)</i>	Date	Depth to Groundwater (ft)	Groundwater Elevation (ft**)	SPH Thickness (ft)	TPHg ←	→ (µg/L)					Notes	
						Benzene	Toluene	Ethylbenzene	Xylenes	MTBE		
<i>MW-3 cont'd</i>	10/22/2001	7.58	171.97	--	<50	<0.5	<0.5	<0.5	<0.5	<5.0		
	2/1/2002	7.53	172.02	--	<50	<0.5	<0.5	<0.5	<0.5	8.5 (8.5)		
	4/19/2002	7.95	171.60	--	<50	<0.5	<0.5	<0.5	<0.5	9.0 (11)		
	7/16/2002	7.68	171.87	--	<50	<0.5	<0.5	<0.5	<0.5	20 (30)		
	10/3/2002	7.78	171.77	--	<50	<0.5	<0.5	<0.5	<0.5	<5.0		
	1/10/2003	6.91	172.64	--	<50	<0.5	<0.5	<0.5	<0.5	19 (16)		
	sampled annually	4/21/2003	7.21	172.34	--	--	--	--	--	--	--	
		7/9/2003	8.05	171.50	--	--	--	--	--	--	--	
		10/7/2003	8.19	171.36	--	<50	<0.5	<0.5	<0.5	<0.5	<5.0	
		1/22/2004	7.13	172.42	--	--	--	--	--	--	--	
		4/2/2004	5.73	173.82	--	--	--	--	--	--	--	
		12/29/2004	4.88	174.67	--	<50	<0.5	<0.5	<0.5	<0.5	<5.0	
		1/27/2005	5.80	173.75	--	--	--	--	--	--	--	
		<b>4/6/2005</b>	<b>5.49</b>	<b>174.06</b>	--	--	--	--	--	--	--	
MW-4	6/27/1996	17.03	163.51	--	720	2	0.5	2.5	23	3.2		
<i>180.54</i>	12/10/1996	8.50	172.04	--	80	2.4	<0.5	<0.5	6.6	<2.0		
	5/8/1998	11.46	169.08	--	<50	0.60	<0.5	<0.5	<0.5	<5.0		
	8/17/1998	13.98	166.56	--	<50	<0.5	<0.5	<0.5	0.5	<5.0		
	11/4/1998	14.36	166.18	--	96	9.7	8.1	4.8	18	<5.0	a	
	2/17/1999	8.39	172.15	--	<50	<0.5	<0.5	<0.5	0.5	<5.0		
	5/27/1999	12.80	167.74	--	<50	<0.5	1.0	<0.5	2.9	<5.0		
	8/19/1999	14.42	166.12	--	<50	<0.5	<0.5	<0.5	<0.5	<5.0		
<i>180.12</i>	11/23/1999	14.63	165.49	--	<50	<0.5	<0.5	<0.5	<0.5	<5.0		
	2/17/2000	8.15	171.97	--	<50	<0.5	<0.5	<0.5	<0.5	<5.0		
	5/9/2000	12.81	167.31	--	<50	<0.5	<0.5	<0.5	<0.5	<5.0		
	8/15/2000	14.29	165.83	--	<50	2.1	<0.5	<0.5	<0.5	<5.0		
	12/1/2000	12.80	167.32	--	81	6.0	8.4	1.0	5.6	<5.0	a	
	2/8/2001	12.57	167.55	--	<50	<0.5	<0.5	<0.5	<0.5	<5.0		
	4/9/2001	12.50	167.62	--	<50	<0.5	<0.5	<0.5	<0.5	<5.0		
	8/6/2001	14.00	166.12	--	59	1.5	<0.5	<0.5	<0.5	<5.0	a	
	10/22/2001	14.05	166.07	--	130	6.3	<0.5	0.88	<0.5	<5.0	a	

# CAMBRIA

**Table 1. Groundwater Elevation and Analytical Data - Hooshi's Auto Service, 1499 MacArthur Boulevard, Oakland, California**

Well ID <i>TOC (ft*)</i>	Date	Depth to Groundwater (ft)	Groundwater Elevation (ft**)	SPH Thickness (ft)	← (µg/L) →						Notes	
					TPHg	Benzene	Toluene	Ethylbenzene	Xylenes	MTBE		
<i>MW-4 cont'd</i>	2/1/2002	13.47	166.65	--	<50	<0.5	<0.5	<0.5	<0.5	<5.0		
	4/19/2002	13.55	166.57	--	<50	<0.5	<0.5	<0.5	<0.5	<5.0		
	7/16/2002	14.05	166.07	--	<50	<0.5	<0.5	<0.5	<0.5	<5.0		
	10/3/2002	13.09	167.03	--	77	2.1	0.51	<0.5	<0.5	<5.0	a	
	1/10/2003	12.04	168.08	--	<50	<0.5	<0.5	<0.5	<0.5	20 (15)	a	
	sampled annually	4/21/2003	12.15	167.97	--	--	--	--	--	--	--	
	7/9/2003	12.90	167.22	--	--	--	--	--	--	--		
	10/7/2003	13.15	166.97	--	<50	<0.5	<0.5	<0.5	<0.5	<5.0		
	1/22/2004	12.09	168.03	--	--	--	--	--	--	--		
	4/2/2004	8.97	171.15	--	--	--	--	--	--	--		
	12/29/2004	7.85	172.27	--	<50	<0.5	<0.5	<0.5	<0.5	<5.0		
	1/27/2005	8.28	171.84	--	--	--	--	--	--	--		
		<b>4/6/2005</b>	<b>8.07</b>	<b>172.05</b>	--	--	--	--	--	--	--	
<b>MW-5</b>	6/27/1996	13.62	166.74	0.16	--	--	--	--	--	--		
<i>180.23</i>	12/10/1996	13.26	167.77	1.00	--	--	--	--	--	--		
	5/8/1998	13.15	167.11	0.04	--	--	--	--	--	--		
	8/17/1998	13.36	166.89	0.02	--	--	--	--	--	--		
	11/4/1998	13.52	166.73	0.02	--	--	--	--	--	--		
	2/17/1999	13.02	167.23	0.02	--	--	--	--	--	--		
	5/27/1999	13.80	166.71	0.35	--	--	--	--	--	--		
	8/19/1999	13.45	166.86	0.10	--	--	--	--	--	--		
<i>180.09</i>	11/23/1999	14.03	166.35	0.36	--	--	--	--	--	--		
	2/17/2000	13.28	167.02	0.26	--	--	--	--	--	--		
	5/9/2000	13.55	166.77	0.29	--	--	--	--	--	--		
	8/15/2000	13.58	166.54	0.04	--	--	--	--	--	--		
	12/1/2000	8.00	172.09	0.00	54,000	240	1,700	870	1,000	<300	c,d	
<i>180.04</i>	2/8/2001	7.88	172.16	0.00	33,000	63	420	120	4,500	<50	a,b	
	4/9/2001	7.97	172.07	0.00	--	--	--	--	--	--		
	4/24/2001	7.00	173.04	0.00	3,200	<1.0	11	7	260	<5.0	c,d	
	8/6/2001	8.17	171.87	--	2,700	11	40	21	240	<5.0	a	
	10/22/2001	8.15	171.89	--	20,000	200	1,200	330	2,900	<100	a,b	

# CAMBRIA

**Table 1. Groundwater Elevation and Analytical Data - Hooshi's Auto Service, 1499 MacArthur Boulevard, Oakland, California**

Well ID <i>TOC (ft*)</i>	Date	Depth to Groundwater (ft)	Groundwater Elevation (ft**)	SPH Thickness (ft)	TPHg	<div style="text-align: center;"> <math>\leftarrow</math> <span style="margin: 0 10px;">Benzene</span> <span style="margin: 0 10px;">Toluene</span> <span style="margin: 0 10px;">Ethylbenzene</span> <span style="margin: 0 10px;">Xylenes</span> <span style="margin: 0 10px;">MTBE</span> <math>\rightarrow</math> </div> (µg/L)					Notes
						<i>MW-5 cont'd</i>	2/1/2002	8.07	171.97	--	
	4/19/2002	8.51	171.53	--	<50	<0.5	<0.5	<0.5	<0.5	<5.0	
	7/16/2002	8.40	171.64	--	<50	<0.5	<0.5	<0.5	1.7	<5.0	
	10/3/2002	8.18	171.86	--	15,000	94	830	460	2,200	<500	a
	1/10/2003	6.95	173.09	--	290	<0.5	1.8	<0.5	17	<5.0	a
	4/21/2003	7.18	172.86	--	<50	<0.5	<0.5	<0.5	<0.5	<5.0	
	7/9/2003	7.95	172.09	--	<50	<0.5	<0.5	<0.5	2.7	<5.0	
	10/7/2003	8.22	171.82	--	9,800	120	340	180	2,000	<50	a
	1/22/2004	7.18	172.86	--	250	<0.5	0.82	<0.5	29	<5.0	d
	4/2/2004	6.23	173.81	--	4,300	6.3	18	59	750	<25	a
	12/29/2004	5.27	174.77	--	72	<0.5	0.78	<0.5	6.5	<5.0	d
	1/27/2005	6.25	173.79	--	3,300	<5.0	22	18	320	<50	a
	4/6/2005	<b>5.90</b>	<b>174.14</b>	--	<b>3,100</b>	<b>1.3</b>	<b>6.9</b>	<b>7.2</b>	<b>100</b>	<b>&lt;10</b>	<b>c,d</b>
MW-6	6/27/1996	18.55	161.48	--	ND	ND	ND	ND	ND	--	
180.03	12/10/1999	11.79	168.24	--	<0.5	<0.5	<0.5	<0.5	<0.5	<2.0	
	5/8/1998	11.62	168.41	--	<50	<0.5	<0.5	<0.5	<0.5	<5.0	
	8/17/1998	12.66	167.37	--	<50	<0.5	<0.5	<0.5	<0.5	<5.0	
	11/4/1998	13.56	166.47	--	68	3.8	3.7	2.8	11	<5.0	a
	2/17/1999	12.91	167.12	--	<50	<0.5	<0.5	<0.5	<0.5	<5.0	
	5/27/1999	13.03	167.00	--	<50	1.0	1.7	0.82	4.9	<5.0	
	8/19/1999	13.10	166.93	--	<50	<0.5	<0.5	<0.5	<0.5	<5.0	
179.63	11/23/1999	13.58	166.05	--	<50	<0.5	<0.5	<0.5	<0.5	<5.0	
	2/17/2000	10.72	168.91	--	<50	<0.5	<0.5	<0.5	<0.5	<5.0	
	5/9/2000	11.71	167.92	--	<50	<0.5	<0.5	<0.5	<0.5	<5.0	
	8/15/2000	12.49	167.14	--	<50	<0.5	<0.5	<0.5	<0.5	<5.0	
	12/1/2000	8.64	170.99	--	<50	<0.5	<0.5	<0.5	<0.5	<5.0	
	2/8/2001	8.20	171.43	--	<50	<0.5	<0.5	<0.5	<0.5	<5.0	
	4/9/2001	8.53	171.10	--	<50	<0.5	<0.5	<0.5	<0.5	<5.0	
	8/6/2001	8.69	170.94	--	<50	<0.5	<0.5	<0.5	<0.5	<5.0	
	10/22/2001	8.75	170.88	--	<50	<0.5	<0.5	<0.5	<0.5	<5.0	
	2/1/2002	8.31	171.32	--	<50	<0.5	<0.5	<0.5	<0.5	<5.0	
	4/19/2002	8.62	171.01	--	<50	<0.5	<0.5	<0.5	<0.5	<5.0	

# CAMBRIA

**Table 1. Groundwater Elevation and Analytical Data - Hooshi's Auto Service, 1499 MacArthur Boulevard, Oakland, California**

Well ID	Date	Depth to Groundwater (ft)	Groundwater Elevation (ft**)	SPH Thickness (ft)	TPHg	Benzene	Toluene	Ethylbenzene	Xylenes	MTBE	Notes
MW-6 cont'd  sampled annually	7/16/2002	8.84	170.79	--	<50	<0.5	<0.5	<0.5	<0.5	<5.0	
	10/3/2002	8.71	170.92	--	<50	<0.5	<0.5	<0.5	<0.5	<5.0	
	1/10/2003	6.99	172.64	--	<50	<0.5	<0.5	<0.5	<0.5	19 (16)	
	4/21/2003	7.15	172.48	--	--	--	--	--	--	--	
	7/9/2003	7.98	171.65	--	--	--	--	--	--	--	
	10/7/2003	8.28	171.35	--	<50	<0.5	<0.5	<0.5	<0.5	<5.0	
	1/22/2004	7.15	172.48	--	--	--	--	--	--	--	
	4/2/2004	6.56	173.07	--	--	--	--	--	--	--	
	12/29/2004	5.63	174.00	--	<50	<0.5	<0.5	<0.5	<0.5	<5.0	
	1/27/2005	6.66	172.97	--	--	--	--	--	--	--	
4/6/2005	6.25	173.38	--	--	--	--	--	--	--		
Trip Blank	5/8/1998	--	--	--	<50	<0.5	<0.5	<0.5	<0.5	<5.0	
	11/4/1998	--	--	--	<50	<0.5	<0.5	<0.5	<0.5	<5.0	
	5/27/1999	--	--	--	<50	<0.5	<0.5	<0.5	<0.5	<5.0	
	11/23/1999	--	--	--	<50	<0.5	<0.5	<0.5	<0.5	<5.0	
	12/1/2000	--	--	--	<50	<0.5	<0.5	<0.5	<0.5	<5.0	

Abbreviations and Methods:

TOC = Top of casing elevation

ft = Measured in feet

SPH = Separate phase hydrocarbons

TPHg = Total petroleum hydrocarbons as gasoline by modified EPA Method 8015

Benzene, toluene, ethylbenzene, and xylenes by EPA Method 8020

MTBE = Methyl tertiary butyl ether by EPA Method 8020

(concentration in parentheses confirmed by EPA Method 8260)

µg/L = Micrograms per liter

-- = Not sampled, not analyzed, or not applicable

ND = Compound not detected, detection limit unknown

\* = Wells surveyed to an arbitrary datum

\*\* = Calculated groundwater elevation corrected for SPH by the relation: Groundwater Elevation = Well Elevation - Depth to Water + (0.8xSPH thickness (ft))

\*\*\* = Due to the air sparge system running during sampling, samples collected on 4/9/01 were anomalous. Well was resampled on 4/24/01 with the air sparge system off.

Notes:

a - The analytical laboratory noted that unmodified or weakly modified gasoline is significant.

b - The analytical laboratory noted lighter than water immiscible sheen is present.

c - The analytical laboratory noted no recognizable pattern.

d - The analytical laboratory noted heavier gasoline range compounds are significant (aged gasoline?)

f - The analytical laboratory noted one to a few isolated non-target peaks present

j - The analytical laboratory noted sample diluted due to high organic content.


**APPENDIX A**

Groundwater Monitoring Field Data Sheets





## WELL GAUGING SHEET

Client: Cambria Environmental Technology						
Site Address: 1499 MacArthur Boulevard Oakland, CA						
Date: 4/6/2005			Signature: 			
Well ID	Time	Depth to SPH	Depth to Water	SPH Thickness	Depth to Bottom	Comments
MW-1	1:25		6.84		20.05	
MW-2	1:35		5.88		19.84	
MW-3	1:20		5.49		19.97	
MW-4	1:10		8.07		19.85	
MW-5	1:30		5.90		14.64	
MW-6	1:15		6.25		20.14	





## WELL SAMPLING FORM

<b>Date:</b>		4/6/2005				
<b>Client:</b>		Cambria Environmental Technology				
<b>Site Address:</b>		1499 MacArthur Boulevard Oakland, CA				
<b>Well ID:</b>		MW-1				
<b>Well Diameter:</b>		2"				
<b>Purging Device:</b>		Disposable Bailer				
<b>Sampling Method:</b>		Disposable Bailer				
<b>Total Well Depth:</b>		20.05	<b>Fe=</b> <b>mg/L</b>			
<b>Depth to Water:</b>		6.84	<b>ORP=</b> <b>mV</b>			
<b>Water Column Height:</b>		13.21	<b>DO=</b> <b>mg/L</b>			
<b>Volume/ft:</b>		0.16				
<b>1 Casing Volume (gal):</b>		2.11	<b>COMMENTS:</b> Turbid			
<b>3 Casing Volumes (gal):</b>		6.34				
<b>TIME:</b>	<b>CASING VOLUME (gal)</b>	<b>TEMP (Celsius)</b>			<b>pH</b>	<b>COND. (microns)</b>
1:43	2.1	24.5	7.14	420		
1:46	4.2	24.7	7.10	455		
1:50	6.3	24.6	7.09	471		
<b>Sample ID:</b>	<b>Date:</b>	<b>Time</b>	<b>Container Type</b>	<b>Preservative</b>	<b>Analytes</b>	<b>Method</b>
MW-1	4/6/2005	1:55	Voa	HCl	TPHg, BTEX, MTBE	8015, 8020, confirm all MTBE hits by 8260
				<b>Signature:</b>		



## WELL SAMPLING FORM

<b>Date:</b>		4/6/2005				
<b>Client:</b>		Cambria Environmental Technology				
<b>Site Address:</b>		1499 MacArthur Boulevard Oakland, CA				
<b>Well ID:</b>		MW-2				
<b>Well Diameter:</b>		2"				
<b>Purging Device:</b>		Disposable Bailer				
<b>Sampling Method:</b>		Disposable Bailer				
<b>Total Well Depth:</b>		19.84	<b>Fe=</b> <b>mg/L</b>			
<b>Depth to Water:</b>		5.88	<b>ORP=</b> <b>mV</b>			
<b>Water Column Height:</b>		13.96	<b>DO=</b> <b>mg/L</b>			
<b>Volume/ft:</b>		0.16				
<b>1 Casing Volume (gal):</b>		2.23	<b>COMMENTS:</b> Black turbid (flakes) no SPH			
<b>3 Casing Volumes (gal):</b>		6.70				
<b>TIME:</b>	<b>CASING VOLUME (gal)</b>	<b>TEMP (Celsius)</b>			<b>pH</b>	<b>COND. (microns)</b>
2:37	2.2	24.8			7.03	815
2:40	4.5	24.8			7.05	829
2:50	6.7	24.7	7.06	842		
<b>Sample ID:</b>	<b>Date:</b>	<b>Time</b>	<b>Container Type</b>	<b>Preservative</b>	<b>Analytes</b>	<b>Method</b>
MW-2	4/6/2005	2:55	Voa	HCl	TPH, BTEX, MTBE	8015, 8020, confirm all MTBE hits by 8260
					<b>Signature:</b>	



## WELL SAMPLING FORM

<b>Date:</b>		4/6/2005				
<b>Client:</b>		Cambria Environmental Technology				
<b>Site Address:</b>		1499 MacArthur Boulevard Oakland, CA				
<b>Well ID:</b>		MW-5				
<b>Well Diameter:</b>		2"				
<b>Purging Device:</b>		Disposable Bailer				
<b>Sampling Method:</b>		Disposable Bailer				
<b>Total Well Depth:</b>		14.64	<b>Fe=</b> mg/L			
<b>Depth to Water:</b>		5.90	<b>ORP=</b> mV			
<b>Water Column Height:</b>		8.74	<b>DO=</b> mg/L			
<b>Volume/ft:</b>		0.16				
<b>1 Casing Volume (gal):</b>		1.40	<b>COMMENTS:</b> Black turbid (flakes), sheen, odor, no measurable SPH			
<b>3 Casing Volumes (gal):</b>		4.20				
<b>TIME:</b>	<b>CASING VOLUME (gal)</b>	<b>TEMP (Celsius)</b>			<b>pH</b>	<b>COND. (microns)</b>
2:15	1.4	24.4			7.13	610
2:17	2.8	24.6	7.10	640		
2:20	4.2	24.7	7.08	644		
<b>Sample ID:</b>	<b>Date:</b>	<b>Time</b>	<b>Container Type</b>	<b>Preservative</b>	<b>Analytes</b>	<b>Method</b>
MW-5	4/6/2005	2:25	Voa	HCl	TPH <sub>g</sub> , BTEX, MTBE	8015, 8020, confirm all MTBE hits by 8260
<b>Signature:</b>						



## DRUM INVENTORY

<b>Client:</b>	Cambria Environmental Technology				
<b>Project:</b>	Hooshi's				
<b>Site Address:</b>	1499 MacArthur Boulevard, Oakland, CA				
<b>Date:</b>	4/6/2005				
<b>ARRIVAL</b>	<b>Amount</b>	<b>SPH</b>	<b>Soil</b>	<b>Water</b>	
<b>COMMENTS (color, type, label markings, location etc.):</b> Three rusted black open top steel drums with non-haz labels. One black open top steel drum with non-haz label marked purge water.	FULL				
	3/4				
	1/2				
	1/4				
	2/3				
	1/3			1	
	3 empty drums				
<b>DEPARTURE</b>	<b>Amount</b>	<b>SPH</b>	<b>Soil</b>	<b>Water</b>	
<b>COMMENTS (color, type, label markings, location etc.):</b> One black open top steel drum with non-haz label marked purge water. Removed three rusted black open top steel drums with non-haz labels.	FULL				
	3/4				
	1/2			1	
	1/4				
	2/3				
	1/3				
	<b>TOTAL</b>			1	

**APPENDIX B**

**Analytical Results for Groundwater Sampling**



# McC Campbell Analytical, Inc.

110 2nd Avenue South, #D7, Pacheco, CA 94553-5560  
Telephone : 925-798-1620 Fax : 925-798-1622  
Website: www.mcccampbell.com E-mail: main@mcccampbell.com

Cambria Env. Technology 5900 Hollis St, Suite A Emeryville, CA 94608	Client Project ID: #129-0741; Hooshi's	Date Sampled: 04/06/05
		Date Received: 04/06/05
	Client Contact: Matt Meyers	Date Reported: 04/13/05
	Client P.O.:	Date Completed: 04/13/05

**WorkOrder: 0504084**

April 13, 2005

Dear Matt:

Enclosed are:

- 1). the results of 3 analyzed samples from your #129-0741; Hooshi's project,
- 2). a QC report for the above samples
- 3). a copy of the chain of custody, and
- 4). a bill for analytical services.

All analyses were completed satisfactorily and all QC samples were found to be within our control limits.

If you have any questions please contact me. McC Campbell Analytical Laboratories strives for excellence in quality, service and cost. Thank you for your business and I look forward to working with you again.

Yours truly,

Angela Rydelius, Lab Manager



# McC Campbell Analytical, Inc.

110 2nd Avenue South, #D7, Pacheco, CA 94553-5560  
Telephone : 925-798-1620 Fax : 925-798-1622  
Website: www.mccampbell.com E-mail: main@mccampbell.com

Cambria Env. Technology  5900 Hollis St, Suite A  Emeryville, CA 94608	Client Project ID: #129-0741; Hooshi's	Date Sampled: 04/06/05
		Date Received: 04/06/05
	Client Contact: Matt Meyers	Date Extracted: 04/08/05
	Client P.O.:	Date Analyzed: 04/08/05

### Gasoline Range (C6-C12) Volatile Hydrocarbons as Gasoline with BTEX and MTBE\*

Extraction method: SW5030B

Analytical methods: SW8021B/8015Cm

Work Order: 0504084

Lab ID	Client ID	Matrix	TPH(g)	MTBE	Benzene	Toluene	Ethylbenzene	Xylenes	DF	% SS
001A	MW-1	W	140,m	ND	ND	0.55	ND	0.70	1	102
002A	MW-2	W	21,000,a	ND<100	400	340	780	1700	20	95
003A	MW-5	W	3100,b,m	ND<10	1.3	6.9	7.2	100	2	110

Reporting Limit for DF =1; ND means not detected at or above the reporting limit	W	50	5.0	0.5	0.5	0.5	0.5	0.5	1	µg/L
	S	NA	NA	NA	NA	NA	NA	NA	1	mg/Kg

\* water and vapor samples and all TCLP & SPLP extracts are reported in µg/L, soil/sludge/solid samples in mg/kg, wipe samples in µg/wipe, product/oil/non-aqueous liquid samples in mg/L.

# cluttered chromatogram; sample peak coelutes with surrogate peak.

+The following descriptions of the TPH chromatogram are cursory in nature and McC Campbell Analytical is not responsible for their interpretation: a) unmodified or weakly modified gasoline is significant; b) heavier gasoline range compounds are significant(aged gasoline?); c) lighter gasoline range compounds (the most mobile fraction) are significant; d) gasoline range compounds having broad chromatographic peaks are significant; biologically altered gasoline?; e) TPH pattern that does not appear to be derived from gasoline (stoddard solvent / mineral spirit?); f) one to a few isolated non-target peaks present; g) strongly aged gasoline or diesel range compounds are significant; h) lighter than water immiscible sheen/product is present; i) liquid sample that contains greater than ~1 vol. % sediment; j) reporting limit raised due to high MTBE content; k) TPH pattern that does not appear to be derived from gasoline (aviation gas). m) no recognizable pattern; n) TPH(g) range non-target isolated peaks subtracted out of the TPH(g) concentration at the client's request.

Angela Rydelius, Lab Manager



QC SUMMARY REPORT FOR SW8021B/8015Cm

W.O. Sample Matrix: Water

QC Matrix: Water

WorkOrder: 0504084

EPA Method: SW8021B/8015Cm		Extraction: SW5030B			BatchID: 15758		Spiked Sample ID: 0504057-002A			
Analyte	Sample	Spiked	MS*	MSD*	MS-MSD*	LCS	LCSD	LCS-LCSD	Acceptance Criteria (%)	
	µg/L	µg/L	% Rec.	% Rec.	% RPD	% Rec.	% Rec.	% RPD	MS / MSD	LCS / LCSD
TPH(btex) <sup>£</sup>	ND	60	93.5	92.9	0.615	95.4	96	0.634	70 - 130	70 - 130
MTBE	ND	10	104	101	3.27	102	101	1.18	70 - 130	70 - 130
Benzene	ND	10	110	111	1.40	104	108	4.05	70 - 130	70 - 130
Toluene	ND	10	105	108	3.02	96.9	103	5.75	70 - 130	70 - 130
Ethylbenzene	ND	10	108	109	0.492	106	106	0	70 - 130	70 - 130
Xylenes	ND	30	95.3	96	0.697	95	95.3	0.350	70 - 130	70 - 130
%SS:	113	10	114	115	1.16	109	110	1.24	70 - 130	70 - 130

All target compounds in the Method Blank of this extraction batch were ND less than the method RL with the following exceptions:

NONE

BATCH 15758 SUMMARY

Sample ID	Date Sampled	Date Extracted	Date Analyzed	Sample ID	Date Sampled	Date Extracted	Date Analyzed
0504084-001A	4/06/05 1:55 PM	4/08/05	4/08/05 7:03 PM	0504084-002A	4/06/05 2:55 PM	4/08/05	4/08/05 7:36 PM

MS = Matrix Spike; MSD = Matrix Spike Duplicate; LCS = Laboratory Control Sample; LCSD = Laboratory Control Sample Duplicate; RPD = Relative Percent Deviation.  
 % Recovery = 100 \* (MS-Sample) / (Amount Spiked); RPD = 100 \* (MS - MSD) / ((MS + MSD) / 2).  
 MS / MSD spike recoveries and / or %RPD may fall outside of laboratory acceptance criteria due to one or more of the following reasons: a) the sample is inhomogenous AND contains significant concentrations of analyte relative to the amount spiked, or b) the spiked sample's matrix interferes with the spike recovery.  
 £ TPH(btex) = sum of BTEX areas from the FID.  
 # cluttered chromatogram, sample peak coelutes with surrogate peak.  
 N/A = not applicable or not enough sample to perform matrix spike and matrix spike duplicate.  
 NR = analyte concentration in sample exceeds spike amount for soil matrix or exceeds 2x spike amount for water matrix or sample diluted due to high matrix or analyte content.

QA/QC Officer





QC SUMMARY REPORT FOR SW8021B/8015Cm

W.O. Sample Matrix: Water

QC Matrix: Water

WorkOrder: 0504084

EPA Method: SW8021B/8015Cm		Extraction: SW5030B			BatchID: 15769		Spiked Sample ID: 0504095-001A			
Analyte	Sample	Spiked	MS*	MSD*	MS-MSD*	LCS	LCSD	LCS-LCSD	Acceptance Criteria (%)	
	µg/L	µg/L	% Rec.	% Rec.	% RPD	% Rec.	% Rec.	% RPD	MS / MSD	LCS / LCSD
TPH(btex) <sup>£</sup>	ND	60	96.9	99.8	2.93	95.2	111	15.7	70 - 130	70 - 130
MTBE	ND	10	95.2	97.5	2.36	99.6	93.5	6.35	70 - 130	70 - 130
Benzene	ND	10	110	115	3.90	112	113	1.09	70 - 130	70 - 130
Toluene	ND	10	107	111	3.72	109	108	0.998	70 - 130	70 - 130
Ethylbenzene	ND	10	109	112	2.40	111	108	2.25	70 - 130	70 - 130
Xylenes	ND	30	96	96.7	0.692	96	96.3	0.347	70 - 130	70 - 130
%SS:	117	10	110	116	5.15	113	114	1.40	70 - 130	70 - 130

All target compounds in the Method Blank of this extraction batch were ND less than the method RL with the following exceptions:

NONE

BATCH 15769 SUMMARY

Sample ID	Date Sampled	Date Extracted	Date Analyzed	Sample ID	Date Sampled	Date Extracted	Date Analyzed
0504084-003A	4/06/05 2:25 PM	4/08/05	4/08/05 8:09 PM				

MS = Matrix Spike; MSD = Matrix Spike Duplicate; LCS = Laboratory Control Sample; LCSD = Laboratory Control Sample Duplicate; RPD = Relative Percent Deviation.

% Recovery = 100 \* (MS-Sample) / (Amount Spiked); RPD = 100 \* (MS - MSD) / ((MS + MSD) / 2).

MS / MSD spike recoveries and / or %RPD may fall outside of laboratory acceptance criteria due to one or more of the following reasons: a) the sample is inhomogenous AND contains significant concentrations of analyte relative to the amount spiked, or b) the spiked sample's matrix interferes with the spike recovery.

£ TPH(btex) = sum of BTEX areas from the FID.

# cluttered chromatogram; sample peak coelutes with surrogate peak.

N/A = not applicable or not enough sample to perform matrix spike and matrix spike duplicate.

NR = analyte concentration in sample exceeds spike amount for soil matrix or exceeds 2x spike amount for water matrix or sample diluted due to high matrix or analyte content.

QA/QC Officer

**McC Campbell Analytical, Inc.**



110 Second Avenue South, #D7  
 Pacheco, CA 94553-5560  
 (925) 798-1620

**CHAIN-OF-CUSTODY RECORD**

WorkOrder: 0504084

ClientID: CETE

**Report to:**

Matt Meyers  
 Cambria Env. Technology  
 5900 Hollis St, Suite A  
 Emeryville, CA 94608

TEL: (510) 420-0700  
 FAX: (510) 420-9170  
 ProjectNo: #129-0741; Hooshi's  
 PO:

**Bill to:**

Accounts Payable  
 Cambria Env. Technology  
 5900 Hollis St, Ste. A  
 Emeryville, CA 94608

Requested TAT:

5 days

*Date Received:* 04/06/2005

*Date Printed:* 04/06/2005

Sample ID	ClientSampID	Matrix	Collection Date	Hold	Requested Tests (See legend below)														
					1	2	3	4	5	6	7	8	9	10	11	12	13	14	15
0504084-001	MW-1	Water	4/6/05 1:55:00 PM	<input type="checkbox"/>	A	A													
0504084-002	MW-2	Water	4/6/05 2:55:00 PM	<input type="checkbox"/>	A														
0504084-003	MW-5	Water	4/6/05 2:25:00 PM	<input type="checkbox"/>	A														

Test Legend:

1	G-MBTX_W	2	PREF REPORT	3		4		5	
6		7		8		9		10	
11		12		13		14		15	

Prepared by: Melissa Valles

**Comments:**

NOTE: Samples are discarded 60 days after results are reported unless other arrangements are made. Hazardous samples will be returned to client or disposed of at client expense.

etc

0504084

**McCAMPBELL ANALYTICAL, INC.**  
 110 1<sup>st</sup> AVENUE SOUTH, #D7  
 PACHECO, CA 94553-5560  
 Website: [www.mccampbell.com](http://www.mccampbell.com) Email: [main@mccampbell.com](mailto:main@mccampbell.com)  
 Telephone: (925) 798-1620 Fax: (925) 798-1622

**CHAIN OF CUSTODY RECORD**  
 TURN AROUND TIME  RUSH  24 HR  48 HR  72 HR  5 DA  
 EDF Required? (Yes) No

Report To: Matt Meyers Bill To: Cambria Environmental Technology  
 Company: Cambria Environmental Technology  
 5900 Hollis St. Ste A  
 Emeryville, CA 94608 E-Mail: [mmevers@cambria-env.com](mailto:mmevers@cambria-env.com)  
 Tele: (510) 420-3314 Fax: (510) 420-9170  
 Project #: 129-0741 Project Name: Hooshis  
 Project Location: 1499 MacArthur Blvd. Oakland, CA  
 Sampler Signature: Muskan Environmental Sampling

Analysis Request										Other	Comment	
MTBE / BTEX & TPH as Gas (802 / 8021 + 8015)												Filter Samples for Metal analysis: Yes / No
MTBE / BTEX ONLY (EPA 602 / 8021)												
TPH as Diesel / Motor Oil (8015)												
Total Petroleum Oil & Grease (1664 / 5520 E/B&F)												
Total Petroleum Hydrocarbons (418.1)												
EPA 502.2 / 601 / 8010 / 8021 (HVOCs)												
EPA 505 / 608 / 8081 (CI Pesticides)												
EPA 608 / 8082 PCB's ONLY; Aroclors / Congeners												
EPA 507 / 8141 (NP Pesticides)												
EPA 515 / 8151 (Acidic CI Herbicides)												
EPA 524.2 / 624 / 8260 (VOCs)												
Fuel Additives (MTBE, ETBE, TAME, DPE, TBA, 1,2 - DCA, 1,2 - EDI, ethanol) by 8260B												
TPHg by 8015 M												
VOCs and fuel additives by 8260												
TPHg / BTEX & MTBE by (8015 / 8020)												
confirm all MTBEs by 8260												

+  
+  
+  
✓

SAMPLE ID (Field Point Name)	LOCATION	SAMPLING		# Containers	Type Containers	MATRIX					METHOD PRESERVED									
		Date	Time			Water	Soil	Air	Sludge	Other	ICE	HCL	HNO <sub>3</sub>	Other						
MW-1		4-6-05	1:55	3	✓	X					X	X								
MW-2			2:55	3	✓	X					X	X								
MW-5			2:25	3	✓	X					X	X								
TB		*		1	*	X					X	X								

ICE?   
 GOOD CONDITION   
 HEAD SPACE ABSENT   
 DECHLORINATED IN LAB   
 PRESERVATION  VOCs  O&G  METALS  OTHER   
 APPROPRIATE CONTAINERS   
 PRESERVED IN LAB

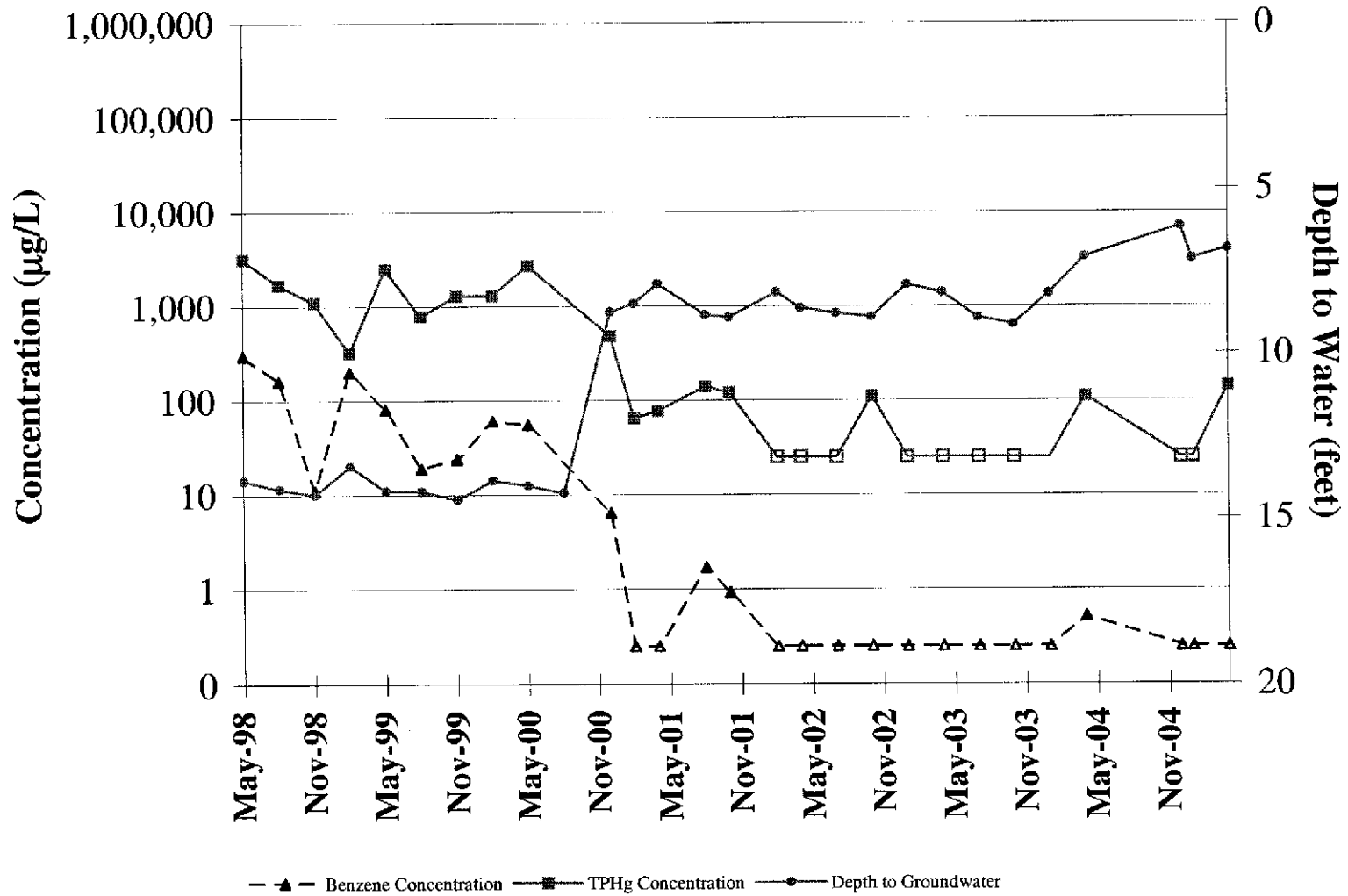
Relinquished By: *[Signature]* Date: 4/6/05 Time: 4pm Received By: *[Signature]*  
 Relinquished By: \_\_\_\_\_ Date: \_\_\_\_\_ Time: \_\_\_\_\_ Received By: \_\_\_\_\_

Hold

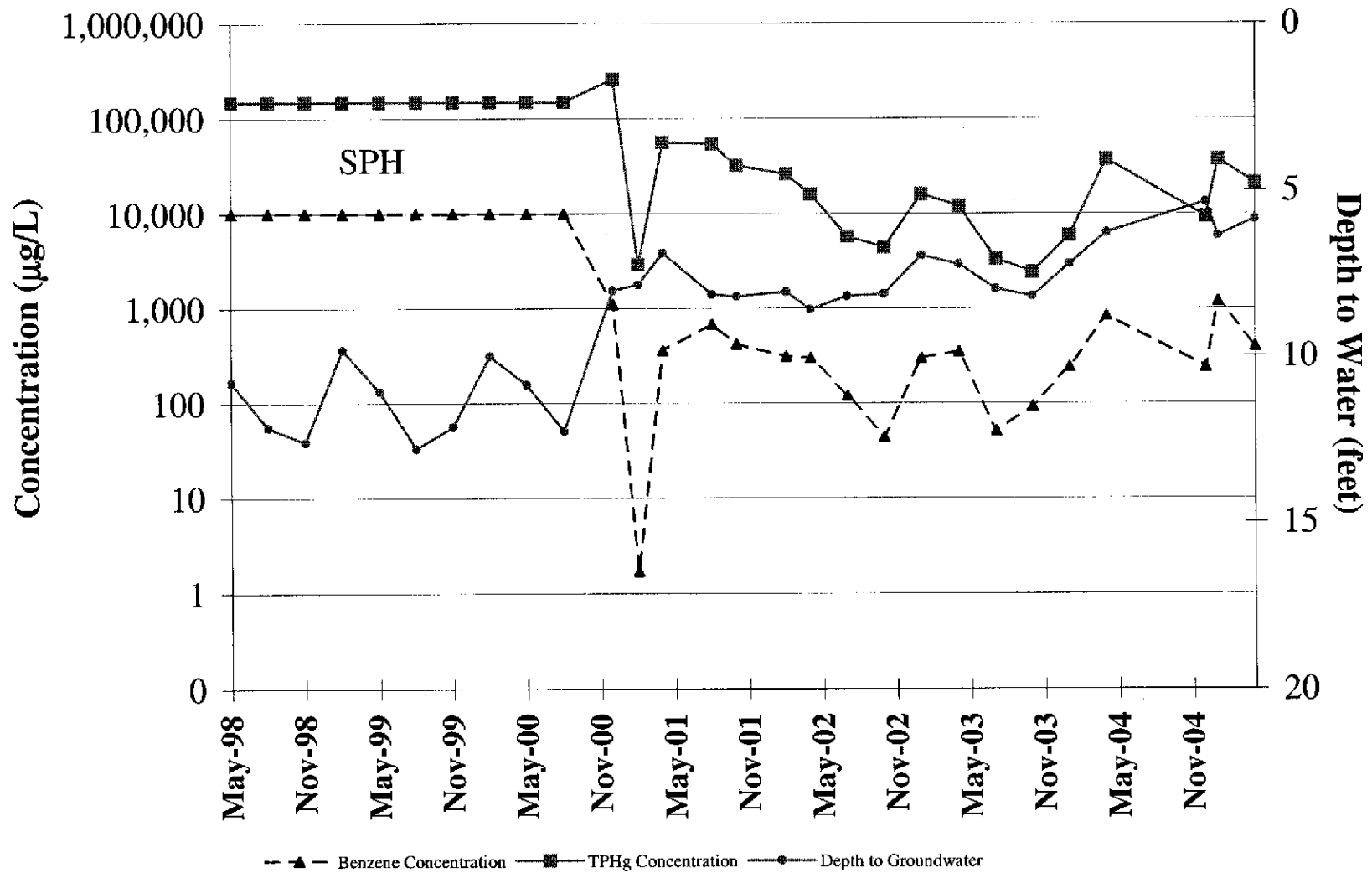
## **APPENDIX C**

**TPHg and Benzene Concentration Graphs**

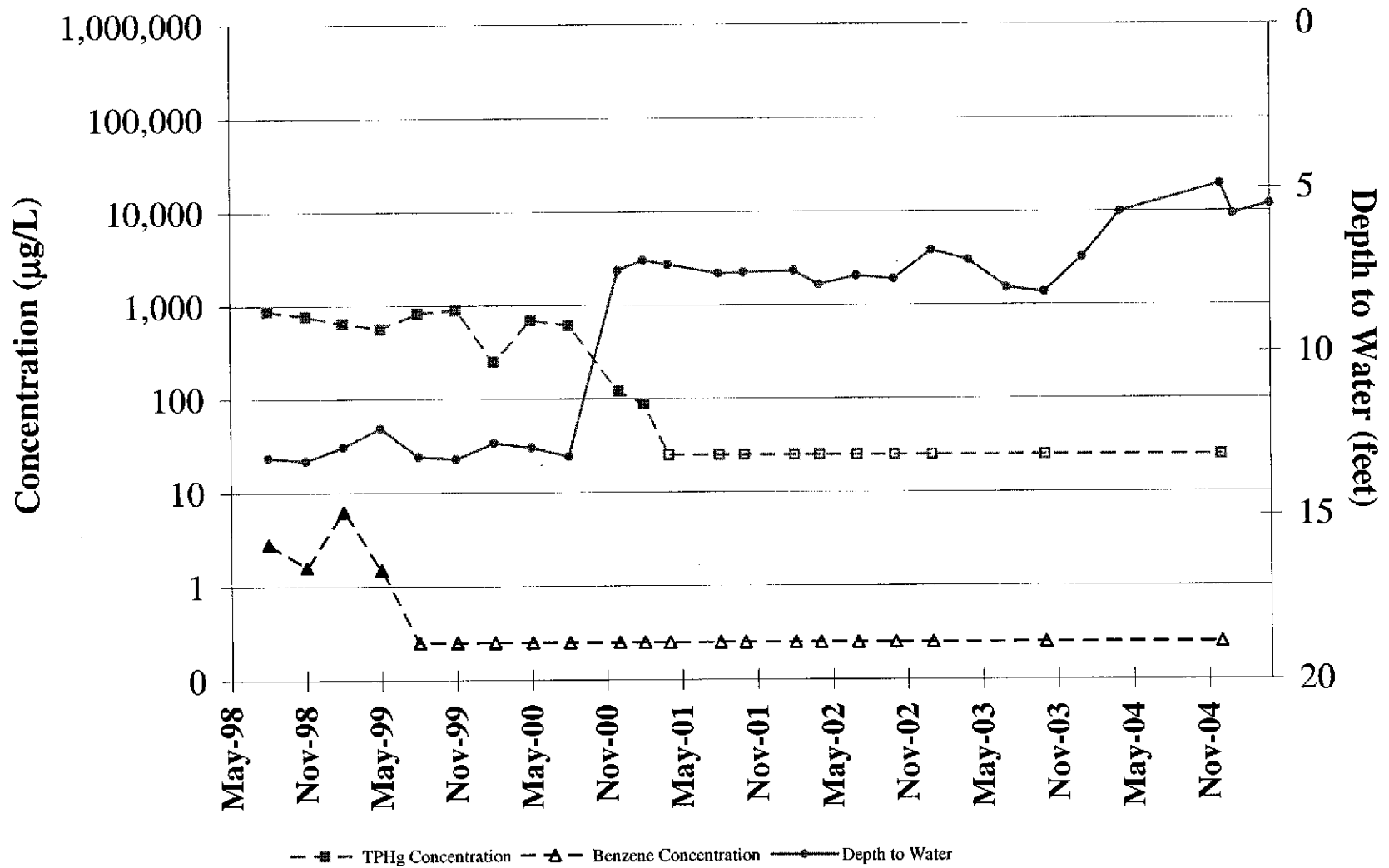
## TPHg and Benzene Concentration Trend Well MW-1



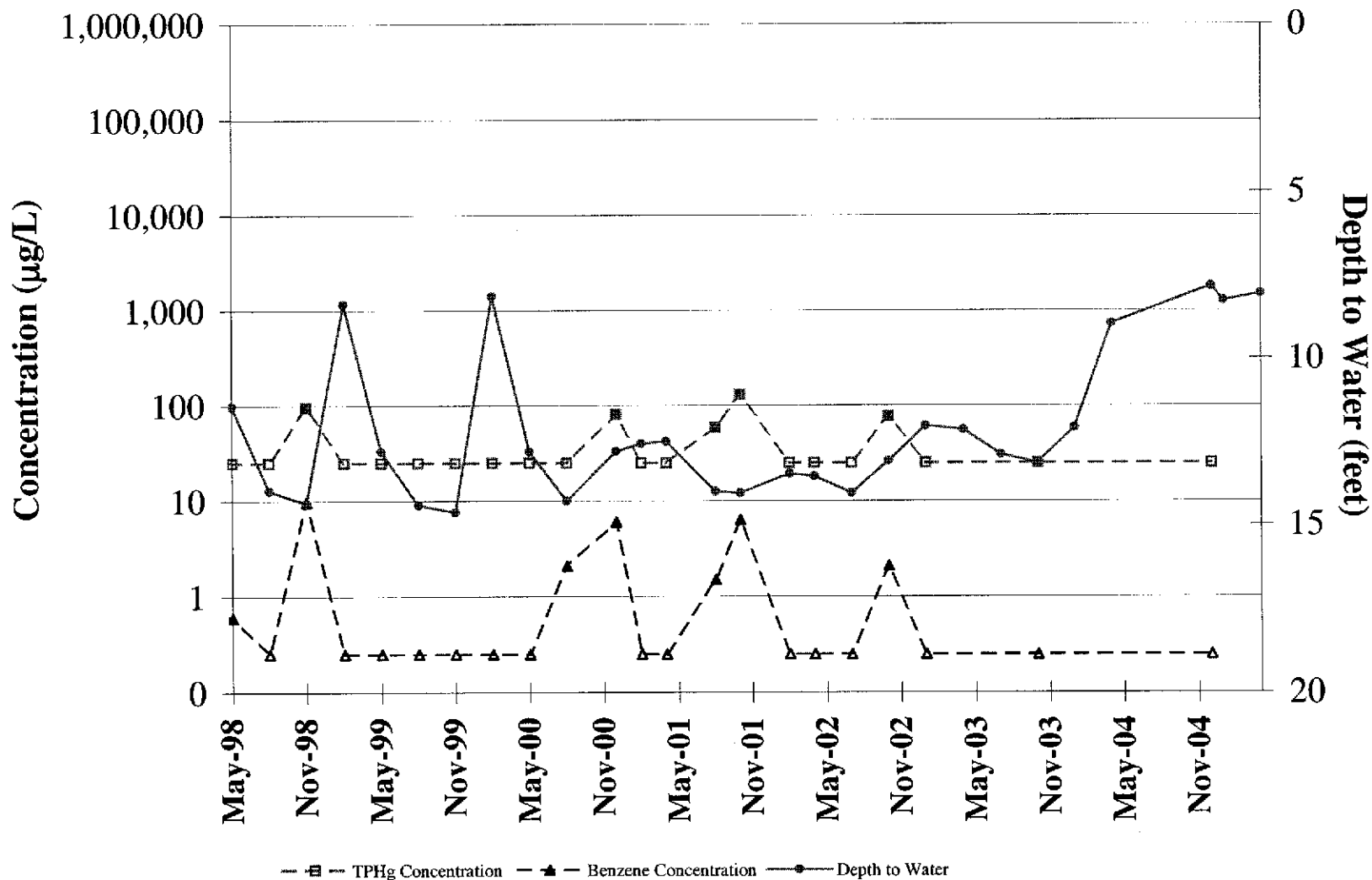
## TPHg and Benzene Concentration Trend Well MW-2



## TPHg and Benzene Concentration Trend Well MW-3

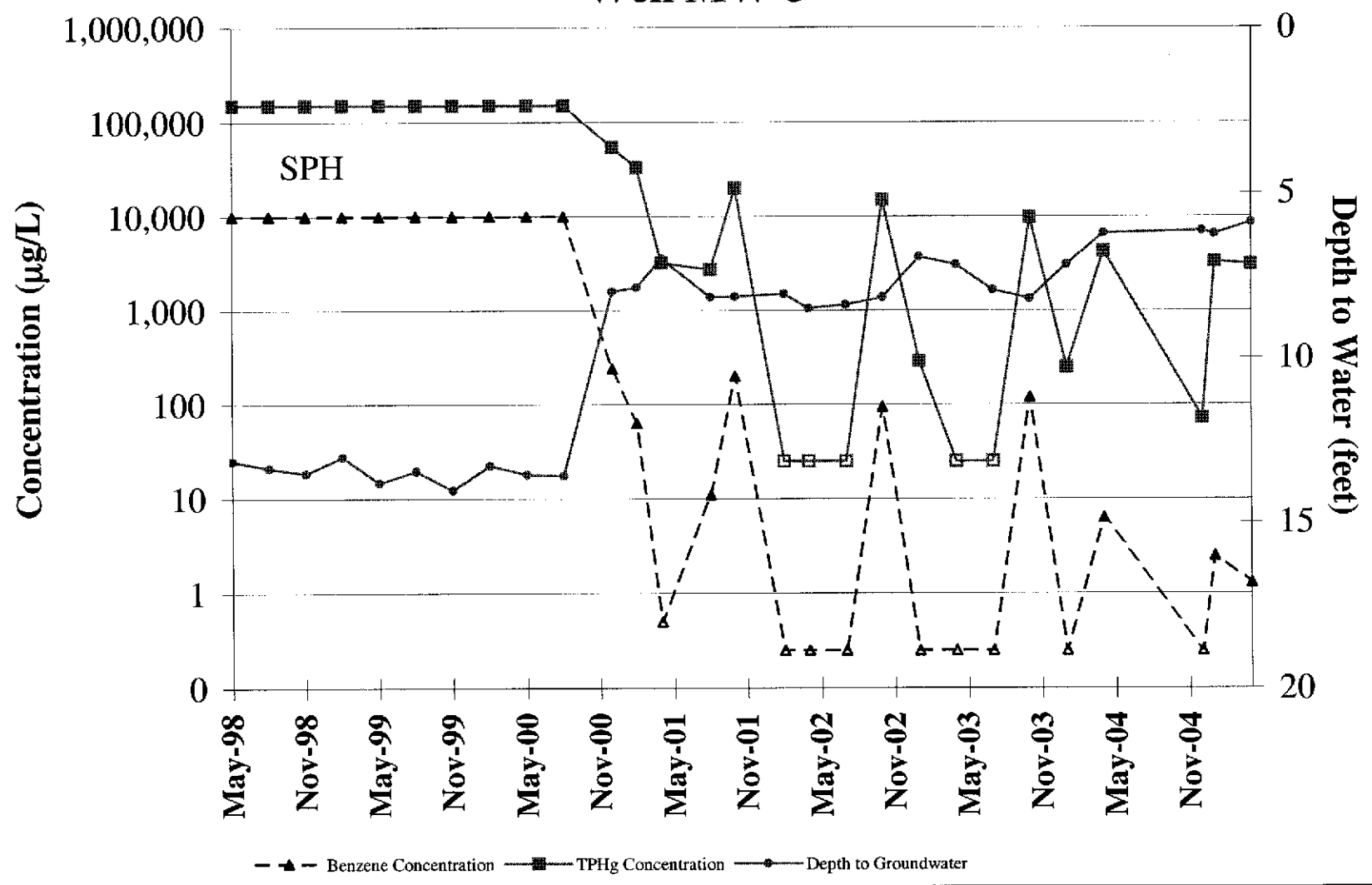


## TPHg and Benzene Concentration Trend Well MW-4





## TPHg and Benzene Concentration Trend Well MW-5



## **APPENDIX D**

### **Electronic Delivery Confirmations**

201

## Electronic Submittal Information

[Main Menu](#) | [View/Add Facilities](#) | [Upload EDD](#) | [Check EDD](#)

### UPLOADING A GEO\_WELL FILE

**Processing is complete. No errors were found!**  
**Your file has been successfully submitted!**

**Submittal Title:** 2nd Qtr 2005 GW Depth Data for 1499 MacArthur Blvd.,  
Oakland

**Submittal Date/Time:** 5/10/2005 3:26:11 PM

**Confirmation  
Number:** 4802845597

[Back to Main Menu](#)

Logged in as CAMBRIA-EM (AUTH\_RP)

[CONTACT SITE ADMINISTRATOR.](#)

## Electronic Submittal Information

[Main Menu](#) | 
 [View/Add Facilities](#) | 
 [Upload EDD](#) | 
 [Check EDD](#)

Your EDF file has been successfully uploaded!

**Confirmation Number:** 9252736568  
**Date/Time of Submittal:** 5/10/2005 3:25:03 PM  
**Facility Global ID:** T0600100714  
**Facility Name:** HOOSHI'S AUTO SERVICE  
**Submittal Title:** 2nd Qtr 2005 GW Analytical Data  
**Submittal Type:** GW Monitoring Report

[Click here to view the detections report for this upload.](#)

<b>HOOSHI'S AUTO SERVICE</b> 1499 MACARTHUR BLVD OAKLAND, CA 94602	<b>Regional Board - Case #: 01-0777</b> SAN FRANCISCO BAY RWQCB (REGION 2) - (BG) <b>Local Agency (lead agency) - Case #: 3597</b> ALAMEDA COUNTY LOP																				
<table style="width: 100%; border-collapse: collapse;"> <thead> <tr> <th style="text-align: left; border-bottom: 1px solid black;">CONF #</th> <th style="text-align: left; border-bottom: 1px solid black;">TITLE</th> <th style="text-align: left; border-bottom: 1px solid black;">QUARTER</th> </tr> </thead> <tbody> <tr> <td>9252736568</td> <td>2nd Qtr 2005 GW Analytical Data</td> <td>Q2 2005</td> </tr> <tr> <td style="border-top: 1px solid black;"><b>SUBMITTED BY</b></td> <td style="border-top: 1px solid black;"><b>SUBMIT DATE</b></td> <td style="border-top: 1px solid black;"><b>STATUS</b></td> </tr> <tr> <td style="border-top: 1px solid black;">Matt Meyers</td> <td style="border-top: 1px solid black;">5/10/2005</td> <td style="border-top: 1px solid black;">PENDING REVIEW</td> </tr> </tbody> </table>	CONF #	TITLE	QUARTER	9252736568	2nd Qtr 2005 GW Analytical Data	Q2 2005	<b>SUBMITTED BY</b>	<b>SUBMIT DATE</b>	<b>STATUS</b>	Matt Meyers	5/10/2005	PENDING REVIEW									
CONF #	TITLE	QUARTER																			
9252736568	2nd Qtr 2005 GW Analytical Data	Q2 2005																			
<b>SUBMITTED BY</b>	<b>SUBMIT DATE</b>	<b>STATUS</b>																			
Matt Meyers	5/10/2005	PENDING REVIEW																			
<p><b>SAMPLE DETECTIONS REPORT</b></p> <table style="width: 100%; border-collapse: collapse;"> <tr> <td># FIELD POINTS SAMPLED</td> <td style="text-align: right;">3</td> </tr> <tr> <td># FIELD POINTS WITH DETECTIONS</td> <td style="text-align: right;">3</td> </tr> <tr> <td># FIELD POINTS WITH WATER SAMPLE DETECTIONS ABOVE MCL</td> <td style="text-align: right;">3</td> </tr> <tr> <td>SAMPLE MATRIX TYPES</td> <td style="text-align: right;">WATER</td> </tr> </table>		# FIELD POINTS SAMPLED	3	# FIELD POINTS WITH DETECTIONS	3	# FIELD POINTS WITH WATER SAMPLE DETECTIONS ABOVE MCL	3	SAMPLE MATRIX TYPES	WATER												
# FIELD POINTS SAMPLED	3																				
# FIELD POINTS WITH DETECTIONS	3																				
# FIELD POINTS WITH WATER SAMPLE DETECTIONS ABOVE MCL	3																				
SAMPLE MATRIX TYPES	WATER																				
<p><b>METHOD QA/QC REPORT</b></p> <table style="width: 100%; border-collapse: collapse;"> <tr> <td>METHODS USED</td> <td style="text-align: right;">SW8021F</td> </tr> <tr> <td>TESTED FOR REQUIRED ANALYTES?</td> <td style="text-align: right;">N</td> </tr> <tr> <td colspan="2">MISSING PARAMETERS NOT TESTED:</td> </tr> <tr> <td colspan="2">- SW8021F REQUIRES ETBE TO BE TESTED</td> </tr> <tr> <td colspan="2">- SW8021F REQUIRES TAME TO BE TESTED</td> </tr> <tr> <td colspan="2">- SW8021F REQUIRES DIPE TO BE TESTED</td> </tr> <tr> <td colspan="2">- SW8021F REQUIRES TBA TO BE TESTED</td> </tr> <tr> <td colspan="2">- SW8021F REQUIRES DCA12 TO BE TESTED</td> </tr> <tr> <td colspan="2">- SW8021F REQUIRES EDB TO BE TESTED</td> </tr> <tr> <td>LAB NOTE DATA QUALIFIERS</td> <td style="text-align: right;">N</td> </tr> </table>		METHODS USED	SW8021F	TESTED FOR REQUIRED ANALYTES?	N	MISSING PARAMETERS NOT TESTED:		- SW8021F REQUIRES ETBE TO BE TESTED		- SW8021F REQUIRES TAME TO BE TESTED		- SW8021F REQUIRES DIPE TO BE TESTED		- SW8021F REQUIRES TBA TO BE TESTED		- SW8021F REQUIRES DCA12 TO BE TESTED		- SW8021F REQUIRES EDB TO BE TESTED		LAB NOTE DATA QUALIFIERS	N
METHODS USED	SW8021F																				
TESTED FOR REQUIRED ANALYTES?	N																				
MISSING PARAMETERS NOT TESTED:																					
- SW8021F REQUIRES ETBE TO BE TESTED																					
- SW8021F REQUIRES TAME TO BE TESTED																					
- SW8021F REQUIRES DIPE TO BE TESTED																					
- SW8021F REQUIRES TBA TO BE TESTED																					
- SW8021F REQUIRES DCA12 TO BE TESTED																					
- SW8021F REQUIRES EDB TO BE TESTED																					
LAB NOTE DATA QUALIFIERS	N																				
<p><b>QA/QC FOR 8021/8260 SERIES SAMPLES</b></p> <table style="width: 100%; border-collapse: collapse;"> <tr> <td>TECHNICAL HOLDING TIME VIOLATIONS</td> <td style="text-align: right;">0</td> </tr> <tr> <td>METHOD HOLDING TIME VIOLATIONS</td> <td style="text-align: right;">0</td> </tr> <tr> <td>LAB BLANK DETECTIONS ABOVE REPORTING DETECTION LIMIT</td> <td style="text-align: right;">0</td> </tr> <tr> <td>LAB BLANK DETECTIONS</td> <td style="text-align: right;">0</td> </tr> <tr> <td colspan="2">DO ALL BATCHES WITH THE 8021/8260 SERIES INCLUDE THE FOLLOWING?</td> </tr> <tr> <td>- LAB METHOD BLANK</td> <td style="text-align: right;">Y</td> </tr> <tr> <td>- MATRIX SPIKE</td> <td style="text-align: right;">Y</td> </tr> <tr> <td>- MATRIX SPIKE DUPLICATE</td> <td style="text-align: right;">Y</td> </tr> <tr> <td>- BLANK SPIKE</td> <td style="text-align: right;">Y</td> </tr> <tr> <td>- SURROGATE SPIKE - NON-STANDARD SURROGATE USED</td> <td style="text-align: right;">Y</td> </tr> </table>		TECHNICAL HOLDING TIME VIOLATIONS	0	METHOD HOLDING TIME VIOLATIONS	0	LAB BLANK DETECTIONS ABOVE REPORTING DETECTION LIMIT	0	LAB BLANK DETECTIONS	0	DO ALL BATCHES WITH THE 8021/8260 SERIES INCLUDE THE FOLLOWING?		- LAB METHOD BLANK	Y	- MATRIX SPIKE	Y	- MATRIX SPIKE DUPLICATE	Y	- BLANK SPIKE	Y	- SURROGATE SPIKE - NON-STANDARD SURROGATE USED	Y
TECHNICAL HOLDING TIME VIOLATIONS	0																				
METHOD HOLDING TIME VIOLATIONS	0																				
LAB BLANK DETECTIONS ABOVE REPORTING DETECTION LIMIT	0																				
LAB BLANK DETECTIONS	0																				
DO ALL BATCHES WITH THE 8021/8260 SERIES INCLUDE THE FOLLOWING?																					
- LAB METHOD BLANK	Y																				
- MATRIX SPIKE	Y																				
- MATRIX SPIKE DUPLICATE	Y																				
- BLANK SPIKE	Y																				
- SURROGATE SPIKE - NON-STANDARD SURROGATE USED	Y																				

**WATER SAMPLES FOR 8021/8260 SERIES**

MATRIX SPIKE / MATRIX SPIKE DUPLICATE(S) % RECOVERY BETWEEN 65-135%	Y
MATRIX SPIKE / MATRIX SPIKE DUPLICATE(S) RPD LESS THAN 30%	Y
SURROGATE SPIKES % RECOVERY BETWEEN 85-115%	N
BLANK SPIKE / BLANK SPIKE DUPLICATES % RECOVERY BETWEEN 70-130%	Y

**SOIL SAMPLES FOR 8021/8260 SERIES**

MATRIX SPIKE / MATRIX SPIKE DUPLICATE(S) % RECOVERY BETWEEN 65-135%	n/a
MATRIX SPIKE / MATRIX SPIKE DUPLICATE(S) RPD LESS THAN 30%	n/a
SURROGATE SPIKES % RECOVERY BETWEEN 70-125%	n/a
BLANK SPIKE / BLANK SPIKE DUPLICATES % RECOVERY BETWEEN 70-130%	n/a

**FIELD QC SAMPLES**

<u>SAMPLE</u>	<u>COLLECTED</u>	<u>DETECTIONS &gt; REPD</u>
QCTB SAMPLES	N	0
QCEB SAMPLES	N	0
QCAB SAMPLES	N	0

Logged in as CAMBRIA-EM (AUTH\_RP)

CONTACT SITE ADMINISTRATOR.

## Electronic Submittal Information

[Main Menu](#) | [View/Add Facilities](#) | [Upload EDD](#) | [Check EDD](#)

### UPLOADING A GEO\_REPORT FILE

**YOUR DOCUMENT UPLOAD WAS SUCCESSFUL!**

**Facility Name:** HOOSHI'S AUTO SERVICE  
**Global ID:** T0600100714  
**Title:** Groundwater Monitoring Report - Second Quarter 2005  
**Document Type:** Monitoring Report - Quarterly  
**Submittal Type:** GEO\_REPORT  
**Submittal Date/Time:** 5/12/2005 10:47:30 AM  
**Confirmation Number:** 9866836369

**[Click here to view the document.](#)**

[Back to Main Menu](#)

Logged in as CAMBRIA-EM (AUTH\_RP)

[CONTACT SITE ADMINISTRATOR.](#)