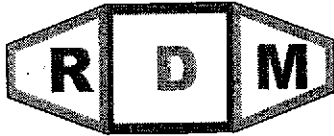


Ro - 498

Increase MTBE trend in off-site wells Mw-10 and Mw-11



Environmental

Add Well Mw-9 to next sampling event, conduct on  
Senior Annual basis

1704 Via Riata, Roseville, CA 95747

Tel: (916) 771-7098, FAX: (916) 771-4584

February 5, 2002

Ms. Eva Chu  
Alameda County  
Environmental Health Department  
470 27<sup>th</sup> Street, Room 322  
Oakland, CA 94612

FEB 11 2002

Subject: *Quarterly Ground Water Monitoring and  
Remediation System Status Report, Fourth Quarter 2001*  
Beacon Station No. 3721  
44 Lewelling Boulevard  
San Lorenzo, California  
Doulos Project No. 00-3721

Dear Ms. Chu:

This report describes quarterly ground water monitoring and remediation system activities conducted during the **Fourth Quarter 2001**.

### STATUS OF GROUND WATER MONITORING

RDM Environmental (RDM) has been authorized by Ultramar Inc. to perform quarterly ground water monitoring and remediation system oversight for the subject site. This report describes quarterly ground water monitoring and remediation system status for the **Fourth Quarter 2001**.

Cumulative ground water sampling information is summarized in Table 1. A site location map, site detail map, ground water elevation map and concentration map are shown on Figures 1 through 4, respectively. The site history is included in Enclosure A, the quarterly monitoring data sheets are included in Enclosure B and the ground water analytical results are included in Enclosure C.

- Local ground water flows towards recovery well RW-1 and historical ground water flow direction is to the southwest.

### Work Performed During the Fourth Quarter 2001:

- Doulos Environmental Inc. performed ground water sampling on **November 7, 2001**
- RDM conducted operation and maintenance on the remediation system.

### STATUS OF REMEDIATION SYSTEM

Operation and maintenance is performed bi-monthly by RDM on a remediation system consisting of ground water treatment, soil vapor extraction (SVE) and air sparging components. Details of system performance and cumulative totals are tabulated in Tables 2 through 4. A process flow diagram showing details of the system is shown as Figure 5.

**Operation & Maintenance Site Visits:**

- Operation and maintenance site visits were conducted for the **Fourth Quarter 2001** on:
  - **October 8 and 19, 2001**
  - **November 2 and 23, 2001**
  - **December 13 and 27, 2001**

**Ground Water Extraction System Performance:**

- The ground water treatment system operated intermittently during the **Fourth Quarter 2001**.
- During the **Fourth Quarter 2001**, the ground water system processed **197,740** gallons.
- As of **December 27, 2001**, the ground water system has processed approximately **556,120** gallons.
- The ground water system performance data is included in Table 2 and the remediation system analytical results are included in Enclosure D.
- Ground water is extracted from recovery well RW-1.

**Soil Vapor Extraction System Performance:**

- The SVE system operated continuously during the **Fourth Quarter 2001**.
- During the **Fourth Quarter 2001**, the SVE system removed **19.1** pounds of vapor equivalent gasoline.
- As of **December 13, 2001**, the SVE system has removed approximately **78.8** pounds (**12.9** gallons) of vapor equivalent gasoline.
- The SVE analytical results are summarized in Table 3 and the SVE system performance data is included in Table 4. The remediation system analytical results are included in Enclosure D.
- Soil vapor extraction is currently being conducted on wells MW-3 and RW-1.

**Air Sparging System Performance:**

- The air sparging system operated continuously during the **Fourth Quarter 2001**.
- Air sparging is currently being conducted on monitoring wells MW-2 and MW-4 and air sparging wells AS-1, AS-2 and AS-3.
- The air compressor is on a 50/50 duty cycle.

**CONCLUSIONS/RECOMMENDATIONS**

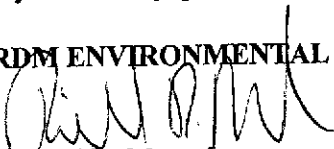
RDM recommends continued operation of the remediation system and quarterly ground water monitoring.

The interpretations contained in this report represent our professional opinions and are based, in part, on information supplied by the client. These opinions are based on currently available information and are arrived at in accordance with currently accepted hydrogeologic and engineering practices at this time and location. Other than this, no warranty is implied or intended.

Ms. Eva Chu  
Alameda County Environmental Health Department  
February 5, 2002  
Page 3

If you have any questions concerning this project, please contact Richard Munsch at (916) 771-7099.

RDM ENVIRONMENTAL

  
Richard D. Munsch  
Project Manager

  
Michael G. Lee, P.E.  
California Registered Civil Engineer No. C055795



RDM (3721 4Q GWM 11-7-01)

cc: Mr. Joe Aldridge – Ultramar Inc. *685 W. 3rd* *Handbook 93230*  
Ms. Susan Keach – Oro Loma Sanitary District  
Mr. Steven Ritchie – California Regional Water Quality Control Board  
San Francisco Bay Region

**Enclosures:**

- Enclosure A: Site Background Information
- Enclosure B: Ground Water Sampling Information
- Enclosure C: Ground Water Monitoring Analytical Results
- Enclosure D: Remediation System Analytical Results

TABLE 1

## GROUND WATER MONITORING DATA

Beacon Station No. 3721  
44 Lewelling Boulevard  
San Lorenzo, California

Monitoring Well	Date	Top of Riser Elevation (ft)	Depth to Water (ft)	Ground Water Elevation (ft)	Benzene (µg/L)	Toluene (µg/L)	Ethyl-benzene (µg/L)	Total Xylenes (µg/L)	TPH as gasoline (µg/L)	MTBE (µg/L)	Comments
MW-1	02/18/92	43.67	16.42	27.25	NS	NS	NS	NS	NS	NS	
	05/14/92		17.28	26.39	NS	NS	NS	NS	NS	NS	
	05/15/92		NM	NC	2,000	47	1,200	400	41,000	NA	
	08/27/92		19.48	24.19	NS	NS	NS	NS	NS	NS	
	08/28/92		NM	NC	3,800	54	850	970	110,000	NA	
	11/19/92		20.57	23.10	200	<5.0	90	140	3,600	NA	
	02/03/93		15.91	27.76	180	22	79	130	3,000	NA	
	06/23/93		16.21	27.46	2,400	74	650	510	12,000	NA	No free product or sheen
	09/22/93		17.85	25.82	3,000	290	1,100	1,200	23,000	NA	No free product or sheen
	01/24/94		17.91	25.76	2,400	280	1,100	1,700	18,000	NA	
	04/07/94		16.94	26.73	4,200	820	1,600	2,100	20,000	NA	No free product or sheen
	06/07/94		17.20	26.47	1,800	510	1,100	1,600	26,000	NA	No free product or sheen
	09/28/94		18.73	24.94	1,700	210	970	870	18,000	NA	No free product or sheen
	12/14/94		17.56	26.11	4,400	2,400	2,300	4,300	31,000	NA	Product sheen
	03/15/95		14.92	28.75	830	310	840	1,200	17,000	NA	Product sheen
	06/13/95		15.38	28.29	1,300	99	1,500	1,100	22,000	NA	No free product or sheen
	09/28/95		16.75	26.92	580	<25	780	410	8,800	NA	No free product or sheen
	12/28/95		17.28	26.39	4.9	<1.3	<1.3	290	4,800	74	No free product or sheen
	01/30/96		NM	NC	17	7.1	20	45	1,500	63	Not measured
	03/12/96		14.13	29.54	<0.5	<0.5	<0.5	<0.5	110	44	No free product or sheen
	06/11/96		14.90	28.77	48	0.9	37	26	600	75	No free product or sheen
	10/02/96		16.31	27.36	16	<0.5	6	0.92	210	11	No free product or sheen
	01/28/97		12.99	30.68	<0.5	<0.5	<0.5	<0.5	150	160	No free product or sheen
	05/20/97		15.28	28.39	<2.5	<2.5	<2.5	<2.5	680	640	No free product or sheen
	08/18/97		16.74	26.93	<2.5	<2.5	<2.5	<2.5	<250	540	No free product or sheen
	09/29/97		NM	NC	NS	NS	NS	NS	NS	NS	Not measured
	11/05/97		17.45	26.22	2.8	<2.5	<2.5	<2.5	<250	400/390 <sup>b</sup>	No free product or sheen
	03/31/98		12.47	31.20	260	13	110	150	3,300	7,900	No free product or sheen
	05/26/98		13.69	29.98	NS	NS	NS	NS	NS	NS	No free product or sheen

TABLE 1

GROUND WATER MONITORING DATA

Beacon Station No. 3721  
 44 Lewelling Boulevard  
 San Lorenzo, California

Monitoring Well	Date	Top of Riser Elevation (ft)	Depth to Water (ft)	Ground Water Elevation (ft)	Benzene (µg/L)	Toluene (µg/L)	Ethyl-benzene (µg/L)	Total Xylenes (µg/L)	TPH as gasoline (µg/L)	MTBE (µg/L)	Comments
MW-1	05/28/98	43.67	NM	NC	120	<10	39	55	7,800	9,300	No free product or sheen
(Cont.)	08/19/98		14.58	29.09	12	<2.5	6.0 <sup>c</sup>	3.8 <sup>c</sup>	<250 <sup>c</sup>	2,200	No free product or sheen
	11/17/98		15.39	28.28	8.3	<2.5	9.2	7.6	860	4,200	No free product or sheen
	02/18/99		13.52	30.15	2.7	<2.5	<2.5	3.9	310	4,200	No free product or sheen
	06/24/99		15.02	28.65	10	<2.5	12	6.5	860	3,400	No free product or sheen
	08/30/99		15.87	27.80	2.0	<0.5	3.9	2.0	140	2,800	No free product or sheen
	11/09/99		16.65	27.02	<0.5	<0.5	3.1	2.0	170	1,500	No free product or sheen
	03/22/00		13.96	29.71	2.8	<2.0	3.6	<2.0	<200	1,200	No free product or sheen
	06/12/00		15.23	28.44	1.3	<1.0	<1.0	<1.0	190	640	No free product or sheen
	11/15/00		17.05	26.62	<1.0	<0.1	<1.0	<1.0	240	960	No free product or sheen
	02/26/01		15.46	28.21	1.2	<1.0	<1.0	<1.0	<100	2,800	No free product or sheen
	05/21/01		16.22	27.45	<2.0	<2.0	<2.0	<2.0	<200	540	No free product or sheen
	09/05/01		11.25	32.42	7.0	<2.0	<2.0	<2.0	<200	550	No free product or sheen
	11/07/01		18.01	25.66	<2.0	<2.0	<2.0	<2.0	290	750	No free product or sheen



TABLE 1

## GROUND WATER MONITORING DATA

Beacon Station No. 3721  
44 Lewelling Boulevard  
San Lorenzo, California

Monitoring Well	Date	Top of Riser Elevation (ft)	Depth to Water (ft)	Ground Water Elevation (ft)	Benzene (µg/L)	Toluene (µg/L)	Ethyl-benzene (µg/L)	Total Xylenes (µg/L)	TPH as gasoline (µg/L)	MTBE (µg/L)	Comments
MW-2	02/18/92	43.09	16.65	26.44	<0.5	<0.5	1.9	<0.5	1,600	NA	
	05/14/92		16.64	26.45	1.2	1	1.3	<0.5	740	NA	
	08/27/92		16.61	26.28	6.5	1.1	0.6	<0.5	1,400	NA	
	11/19/92		19.91	23.18	<0.5	<0.5	2.7	<0.5	360	NA	
	02/03/93		15.23	27.86	1.2	1.6	4.5	6.4	590	NA	
	06/23/93		15.55	27.54	<0.5	<0.5	0.52	0.5	160	NA	No free product or sheen
	09/22/93		17.22	25.87	<0.5	0.59	1.2	0.59	290	NA	No free product or sheen
	01/24/94		17.20	25.89	<0.5	<0.5	0.68	<0.5	330	NA	
	04/07/94		16.26	26.83	<0.5	<0.5	<0.5	4.4	490	NA	No free product or sheen
	06/07/94		16.46	26.63	<0.5	<0.5	1.5	<0.5	550	NA	No free product or sheen
	09/28/94		18.06	25.03	<0.5	<0.5	<0.5	<0.5	190	NA	No free product or sheen
	12/14/94		16.86	26.23	7.2	0.84	<0.5	<0.5	1,400	NA	No free product or sheen
	03/15/95		14.08	29.01	39	<0.5	0.53	<0.5	730	NA	No free product or sheen
	06/13/95		14.67	28.42	8.3	<0.5	<0.5	<0.5	750 <sup>a</sup>	NA	No free product or sheen
	09/28/95		16.07	27.02	<0.5	<0.5	<0.5	<0.5	670 <sup>a</sup>	NA	No free product or sheen
	12/28/95		16.46	26.63	9.5	<5.0	<5.0	5.2	3,100	4,600	No free product or sheen
	03/12/96		13.11	29.98	<1.3	<1.3	<1.3	<1.3	710	3,200	No free product or sheen
	06/11/96		14.14	28.95	1.6	<1.3	<1.3	<1.3	1,900 <sup>a</sup>	5,100	No free product or sheen
	10/02/96		15.71	27.38	<2.5	<2.5	<2.5	<2.5	2,800	7,900	No free product or sheen
	01/28/97		12.05	31.04	<0.5	<0.5	<0.5	<0.5	130	210	No free product or sheen
	05/20/97		14.65	28.44	120	16	<2.5	4.0	1,400	390	No free product or sheen
	08/18/97		16.00	27.09	<2.5	<2.5	<2.5	<2.5	<250	2,000	No free product or sheen
	09/29/97		NM	NC	NS	NS	NS	NS	NS	NS	Not measured
	11/05/97		16.75	26.34	<2.5	<2.5	<2.5	<2.5	<250	2,900/2,900 <sup>b</sup>	No free product or sheen
	03/31/98		11.54	31.55	<0.5	<0.5	<0.5	<0.5	<10,000	85,000	No free product or sheen
	05/26/98		12.78	30.31	NS	NS	NS	NS	NS	NS	No free product or sheen
	05/28/98		NM	NC	<500	<500	<500	<500	<50,000	97,000	No free product or sheen
	08/19/98		14.40	28.69	<0.5	<0.5	<0.5	<0.5	210	22,000	No free product or sheen
	11/17/98		15.18	27.91	<0.5	<0.5	<0.5	<0.5	<50	17,000	No free product or sheen

TABLE 1

GROUND WATER MONITORING DATA

Beacon Station No. 3721  
 44 Lewelling Boulevard  
 San Lorenzo, California

Monitoring Well	Date	Top of Riser Elevation (ft)	Depth to Water (ft)	Ground Water Elevation (ft)	Benzene (µg/L)	Toluene (µg/L)	Ethyl-benzene (µg/L)	Total Xylenes (µg/L)	TPH as gasoline (µg/L)	MTBE (µg/L)	Comments
MW-2	02/18/99	43.09	14.07	29.02	<0.5	<0.5	<0.5	<0.5	<50	13,000	No free product or sheen
(Cont.)	06/24/99		14.70	28.39	<15	<0.5	<0.5	<0.5	180	39,000	No free product or sheen
	08/30/99		15.46	27.63	<25	<25	<25	<25	<2,500	18,000	No free product or sheen
	11/09/99		16.03	27.06	<5.0	<5.0	<5.0	<5.0	<500	14,000	No free product or sheen
	03/22/00		13.05	30.04	<5.0	<5.0	<5.0	<5.0	<500	54,000	No free product or sheen
	06/12/00		14.50	28.59	<20	<20	<20	<20	<2,000	53,000	No free product or sheen
	11/15/00		16.28	26.81	<50	<50	<50	<50	<5,000	35,000	No free product or sheen
	02/26/01		14.98	28.11	<20	<20	<20	<20	<2,000	2,800	No free product or sheen
	05/21/01		15.45	27.64	<25	<25	<25	<25	<5,000	20,000	No free product or sheen
	09/05/01		15.17	27.92	<20	<20	<20	<20	<2,000	12,000	No free product or sheen
	11/07/01		17.05	26.04	<20	<20	<20	<20	<2,000	7,600	No free product or sheen

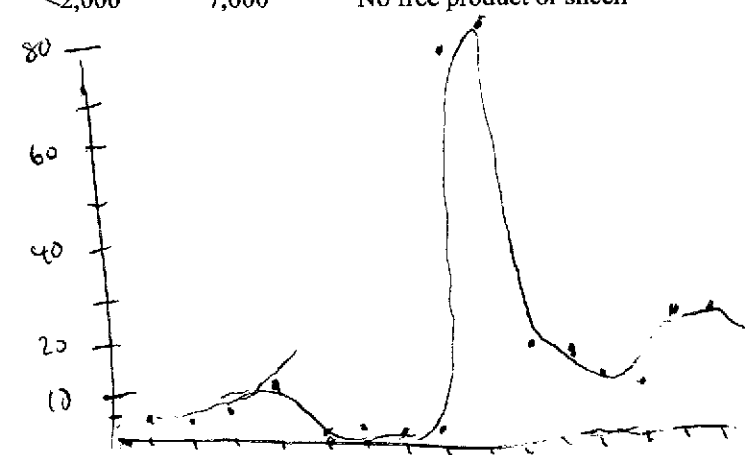
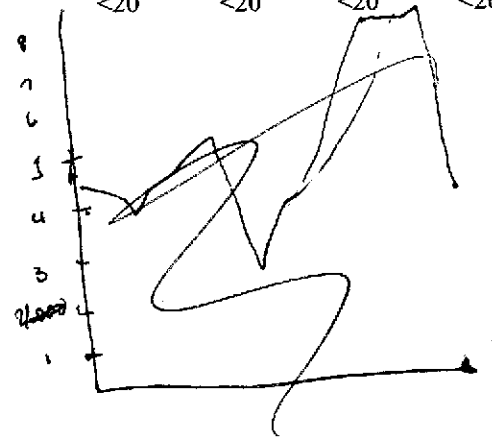


TABLE 1

## GROUND WATER MONITORING DATA

Beacon Station No. 3721  
44 Lewelling Boulevard  
San Lorenzo, California

Monitoring Well	Date	Top of Riser Elevation (ft)	Depth to Water (ft)	Ground Water Elevation (ft)	Benzene (µg/L)	Toluene (µg/L)	Ethyl-benzene (µg/L)	Total Xylenes (µg/L)	TPH as gasoline (µg/L)	MTBE (µg/L)	Comments
MW-3	02/18/92	43.10	16.89	26.21	NS	NS	NS	NS	NS	NS	
	05/14/92		16.60	26.50	NS	NS	NS	NS	NS	NS	
	05/15/92		NM	NC	6,300	5,900	1,700	6,100	160,000	NA	
	08/27/92		18.96	24.14	NS	NS	NS	NS	NS	NS	
	08/28/92		NM	NC	2,500	40,000	6,700	44,000	1,300,000	NA	
	11/18/92		20.38	23.01	NS	NS	NS	NS	NS	NS	
	11/19/92		NM	NC	NS	NS	NS	NS	NS	NS	
	02/03/93		15.43	27.67	7,200	11,000	2,900	13,000	82,000	NA	
	06/23/93		15.67	27.43	3,200	5,300	2,500	9,100	61,000	NA	Product sheen
	09/22/93		17.20	25.90	12,000	14,000	3,900	18,000	94,000	NA	No free product or sheen
	01/24/94		17.35	25.75	14,000	17,000	4,200	14,000	110,000	NA	
	04/07/94		14.48	28.62	6,500	1,800	1,700	4,100	28,000	NA	No free product or sheen
	06/07/94		13.37	29.73	6,400	2,300	1,500	3,500	27,000	NA	Product sheen
	09/28/94		18.05	25.05	7,400	4,300	1,500	4,600	40,000	NA	No free product or sheen
	12/14/94		16.92	26.18	17,000	21,000	3,900	22,000	140,000	NA	Product sheen
	03/15/95		14.22	28.88	4,900	1,900	1,800	7,100	58,000	NA	Product sheen
	06/13/95		14.49	28.61	7,200	2,900	1,200	4,600	44,000	NA	Product sheen
	09/28/95		15.17	27.93	5,600	2,100	1,900	6,900	30,000	NA	No free product or sheen
	12/28/95		15.45	27.65	32	5.8	18	4,700	16,000	360	No free product or sheen
	01/30/96		NM	NC	850	800	190	1,700	8,700	430	Not measured
	03/12/96		11.35	31.75	48	64	5.3	630	2,400	97	No free product or sheen
	06/11/96		Dry	Dry	NS	NS	NS	NS	NS	NS	Dry
	10/02/96		Dry	Dry	NS	NS	NS	NS	NS	NS	Dry
	01/28/97		Dry	Dry	NS	NS	NS	NS	NS	NS	Dry
	05/20/97		Dry	Dry	NS	NS	NS	NS	NS	NS	Plugged at 14 feet
	07/10/97		NM	NC	<0.50	<0.50	<0.50	4.8	300	40	Not measured
	08/18/97		16.05	27.05	480	8.4	100	230	3,600	170	No free product or sheen
	09/29/97		NM	NC	740	8.6	160	240	3500	210	Not measured
	11/05/97		16.78	26.32	870	15	180	210	4,100	240/210 <sup>b</sup>	No free product or sheen



TABLE 1

## GROUND WATER MONITORING DATA

Beacon Station No. 3721  
44 Lewelling Boulevard  
San Lorenzo, California

Monitoring Well	Date	Top of Riser Elevation (ft)	Depth to Water (ft)	Ground Water Elevation (ft)	Benzene (µg/L)	Toluene (µg/L)	Ethyl-benzene (µg/L)	Total Xylenes (µg/L)	TPH as gasoline (µg/L)	MTBE (µg/L)	Comments
MW-3	03/31/98	43.10	11.55	31.55	1,800	600	410	1,400	12,000	510	No free product or sheen
(Cont.)	05/26/98		12.80	30.30	NS	NS	NS	NS	NS	NS	No free product or sheen
	05/28/98		NM	NC	1,500	400	280	870	6,500	480	No free product or sheen
	08/19/98		14.27	28.83	130	11	24	60	1,400	140	No free product or sheen
	11/17/98		15.11	27.99	48	3.5	9.9	14	510	120	No free product or sheen
	02/18/99		13.30	29.80	67	28	24	81	690	88	No free product or sheen
	06/24/99		14.44	28.66	27	21	8.6	32	540	61	No free product or sheen
	08/30/99		15.05	28.05	12	12	3.2	13	250	50	No free product or sheen
	11/09/99		15.72	27.38	9.8	5.3	3.4	10	230	48	No free product or sheen
	03/22/00		13.21	29.89	180	47	46	100	1,500	80	No free product or sheen
	06/12/00		14.31	28.79	100	6.2	20	25	920	76	No free product or sheen
	11/15/00		16.13	26.97	280	5.0	21	20	1,100	140	No free product or sheen
	02/26/01		14.48	28.62	14	4.3	3.1	11	140	230	No free product or sheen
	05/21/01		15.30	27.80	36	0.72	1.0	2.2	510	280	No free product or sheen
	09/05/01		16.10	27.00	59	0.53	0.75	0.57	390	620	No free product or sheen
	11/07/01		17.40	25.70	170	2.3	4.9	4.8	830	900	No free product or sheen



TABLE 1

## GROUND WATER MONITORING DATA

Beacon Station No. 3721  
44 Lewelling Boulevard  
San Lorenzo, California

Monitoring Well	Date	Top of Riser Elevation (ft)	Depth to Water (ft)	Ground Water Elevation (ft)	Benzene (µg/L)	Toluene (µg/L)	Ethyl-benzene (µg/L)	Total Xylenes (µg/L)	TPH as gasoline (µg/L)	MTBE (µg/L)	Comments
MW-4	02/18/92	44.66	18.51	26.15	<0.5	<0.5	12	21	5,100	NA	
	05/14/92		18.22	26.44	<0.5	5.6	1.8	2.2	4,600	NA	
	08/27/92		20.47	24.19	NS	NS	NS	NS	NS	NS	
	08/28/92		NM	NC	6.6	1.3	1.6	3.1	1,700	NA	
	11/19/92		21.58	23.08	<0.5	<0.5	<0.5	<0.5	400	NA	
	02/03/93		16.98	27.68	<0.5	<0.5	<0.5	<0.5	1,100	NA	
	06/23/93		17.23	27.43	<0.5	<0.5	<0.5	<0.5	120	NA	No free product or sheen
	09/22/93		18.83	25.83	<0.5	<0.5	<0.5	<0.5	110	NA	No free product or sheen
	01/24/94		18.86	25.80	<0.5	<0.5	<0.5	<0.5	260	NA	
	04/07/94		17.90	26.76	<0.5	<0.5	<0.5	<0.5	430	NA	No free product or sheen
	06/07/94		18.08	26.58	<0.5	<0.5	<0.5	<0.5	150	NA	No free product or sheen
	09/28/94		19.70	24.96	<0.5	<0.5	<0.5	<0.5	75	NA	No free product or sheen
	12/14/94		18.55	26.11	<0.5	<0.5	<0.5	<0.5	160	NA	No free product or sheen
	03/15/95		16.14	28.52	<0.5	<0.5	<0.5	<0.5	500	NA	No free product or sheen
	06/13/95		16.41	28.25	<0.5	<0.5	<0.5	<0.5	210 <sup>a</sup>	NA	No free product or sheen
	09/28/95		17.88	26.78	<0.5	<0.5	<0.5	<0.5	140 <sup>a</sup>	NA	No free product or sheen
	12/28/95		17.81	26.85	<0.5	<0.5	<0.5	<0.5	510 <sup>a</sup>	<5.0	No free product or sheen
	03/12/96		14.77	29.89	<0.5	<0.5	<0.5	<0.5	<50	<5.0	No free product or sheen
	06/11/96		15.88	28.78	<0.5	<0.5	<0.5	<0.5	50 <sup>a</sup>	<5.0	No free product or sheen
	10/02/96		17.40	27.26	<0.5	<0.5	<0.5	<0.5	<50	<5.0	No free product or sheen
	01/28/97		14.11	30.55	<0.5	<0.5	<0.5	<0.5	270 <sup>a</sup>	<5.0	No free product or sheen
	05/20/97		16.24	28.42	<0.5	<0.5	<0.5	<0.5	<50	<5.0	No free product or sheen
	08/18/97		17.59	27.07	<0.5	<0.5	<0.5	<0.5	<50	<5.0	No free product or sheen
	09/29/97		NM	NC	NS	NS	NS	NS	NS	NS	Not measured
	11/05/97		18.24	26.42	<0.5	<0.5	<0.5	<0.5	<50	<5.0/<0.5 <sup>b</sup>	No free product or sheen
	03/31/98		13.61	31.05	<0.5	<0.5	<0.5	<0.5	110	<5.0	No free product or sheen
	05/26/98		14.78	29.88	NS	NS	NS	NS	NS	NS	No free product or sheen
	05/28/98		NM	NC	<0.5	<0.5	<0.5	<0.5	94	<5.0	No free product or sheen
	08/19/98		16.15	28.51	<0.5 <sup>c</sup>	<0.5 <sup>c</sup>	<0.5 <sup>c</sup>	<0.5 <sup>c</sup>	120 <sup>c</sup>	46 <sup>c</sup>	No free product or sheen

TABLE 1

GROUND WATER MONITORING DATA

Beacon Station No. 3721  
 44 Lewelling Boulevard  
 San Lorenzo, California

Monitoring Well	Date	Top of Riser Elevation (ft)	Depth to Water (ft)	Ground Water Elevation (ft)	Benzene (µg/L)	Toluene (µg/L)	Ethyl-benzene (µg/L)	Total Xylenes (µg/L)	TPH as gasoline (µg/L)	MTBE (µg/L)	Comments
MW-4	11/17/98	44.66	16.93	27.73	1.3	<0.5	<0.5	<0.5	<50	780	No free product or sheen
(Cont.)	02/18/99		15.30	29.36	8.2	<0.5	<0.5	<0.5	130	240	No free product or sheen
	06/24/99		16.35	28.31	<1.0	<0.5	<0.5	<0.5	<50	2,100	No free product or sheen
	08/30/99		17.12	27.54	NS	NS	NS	NS	NS	NS	Not sampled
	11/09/99		17.60	27.06	<0.5	<0.5	<0.5	<0.5	<50	2,500	No free product or sheen
	03/22/00		14.98	29.68	<0.5	<0.5	<0.5	<0.5	69	12,000	No free product or sheen
	06/12/00		16.26	28.40	<20	<20	<20	<20	<2,000	17,000	No free product or sheen
	11/15/00		17.98	26.68	<1.0	<1.0	<1.0	<1.0	<100	17,000	No free product or sheen
	02/26/01		16.31	28.35	NS	NS	NS	NS	NS	NS	Not Sampled
	05/21/01		17.15	27.51	<25	<25	<25	<25	<5,000	13,000	No free product or sheen
	09/05/01		18.22	26.44	NS	NS	NS	NS	NS	NS	Not Sampled
	11/07/01		19.01	25.65	<10	<10	<10	<10	<1,000	3,800	No free product or sheen



TABLE 1

## GROUND WATER MONITORING DATA

Beacon Station No. 3721  
44 Lewelling Boulevard  
San Lorenzo, California

Monitoring Well	Date	Top of Riser Elevation (ft)	Depth to Water (ft)	Ground Water Elevation (ft)	Benzene (µg/L)	Toluene (µg/L)	Ethyl-benzene (µg/L)	Total Xylenes (µg/L)	TPH as gasoline (µg/L)	MTBE (µg/L)	Comments
MW-5	02/18/92	43.79	17.37	26.42	<0.5	<0.5	<0.5	<0.5	<50	NA	
	05/14/92		17.29	26.50	<0.5	<0.05	<0.5	<0.5	<50	NA	
	08/27/92		22.18	21.61	<0.5	<0.5	<0.5	<0.5	<50	NA	
	11/19/92		20.68	23.11	<0.5	<0.5	<0.5	<0.5	<50	NA	
	02/03/93		15.91	27.88	3.0	2.7	8.0	9.9	55	NA	
	06/23/93		16.24	27.55	<0.5	<0.5	<0.5	<0.5	<50	NA	No free product or sheen
	09/22/93		17.93	25.86	0.66	1.1	<0.5	0.6	<50	NA	No free product or sheen
	01/24/94		17.82	25.97	<0.5	<0.5	<0.5	<0.5	<50	NA	
	04/07/94		16.91	26.88	<0.5	<0.5	<0.5	<0.5	<50	NA	No free product or sheen
	06/07/94		17.10	26.69	<0.5	<0.5	<0.5	<0.5	<50	NA	No free product or sheen
	09/28/94		18.73	25.06	<0.5	<0.5	<0.5	<0.5	<50	NA	No free product or sheen
	12/14/94		17.53	26.26	<0.5	<0.5	<0.5	<0.5	<50	NA	No free product or sheen
	03/15/95		14.96	28.83	<0.5	<0.5	<0.5	<0.5	<50	NA	No free product or sheen
	06/13/95		15.30	28.49	<0.5	0.52	<0.5	<0.5	<50	NA	No free product or sheen
	09/28/95		16.74	27.05	<0.5	<0.5	<0.5	<0.5	<50	NA	No free product or sheen
	12/28/95		15.10	28.69	<0.5	<0.5	<0.5	<0.5	120	<5.0	No free product or sheen
	03/12/96		13.67	30.12	<0.5	<0.5	<0.5	<0.5	<50	9	No free product or sheen
	06/11/96		14.88	28.91	<0.5	<0.5	<0.5	<0.5	<50	<5.0	No free product or sheen
	10/02/96		16.42	27.37	<0.5	<0.5	<0.5	<0.5	<50	<5.0	No free product or sheen
	01/28/97		12.83	30.96	<0.5	<0.5	<0.5	<0.5	<50	<5.0	No free product or sheen
	05/20/97		15.33	28.46	<0.5	<0.5	<0.5	<0.5	<50	<5.0	No free product or sheen
	08/18/97		16.69	27.10	<0.5	<0.5	<0.5	<0.5	<50	<5.0	No free product or sheen
	09/29/97		NM	NC	NS	NS	NS	NS	NS	NS	Not measured
	11/05/97		17.37	26.42	<0.5	<0.5	<0.5	<0.5	<50	<5.0/<0.5 <sup>b</sup>	No free product or sheen
	03/31/98		12.40	31.39	<0.5	<0.5	<0.5	<0.5	<50	<5.0	No free product or sheen
	05/26/98		13.62	30.17	NS	NS	NS	NS	NS	NS	No free product or sheen
	05/28/98		NM	NC	<0.5	<0.5	<0.5	<0.5	<50	<5.0	No free product or sheen
	08/19/98		15.19	28.60	<0.5	<0.5	<0.5	<0.5	<50	7	No free product or sheen
	11/17/98		15.89	27.90	<0.5	<0.5	<0.5	<0.5	<50	6	No free product or sheen

TABLE 1

## GROUND WATER MONITORING DATA

Beacon Station No. 3721  
44 Lewelling Boulevard  
San Lorenzo, California

Monitoring Well	Date	Top of Riser Elevation (ft)	Depth to Water (ft)	Ground Water Elevation (ft)	Benzene (µg/L)	Toluene (µg/L)	Ethyl-benzene (µg/L)	Total Xylenes (µg/L)	TPH as gasoline (µg/L)	MTBE (µg/L)	Comments
MW-5	02/18/99	43.79	14.23	29.56	<0.5	<0.5	<0.5	<0.5	<50	<5.0	No free product or sheen
(Cont.)	06/24/99		15.29	28.50	NS	NS	NS	NS	NS	NS	Not sampled
	08/30/99		16.07	27.72	NS	NS	NS	NS	NS	NS	Not sampled
	11/09/99		16.61	27.18	NS	NS	NS	NS	NS	NS	Not sampled
	03/22/00		13.81	29.98	<0.5	<0.5	<0.5	<0.5	<50	<5.0	No free product or sheen
	06/12/00		15.08	28.71	NS	NS	NS	NS	NS	NS	Not sampled
	11/15/00		16.71	27.08	NS	NS	NS	NS	NS	NS	Not Sampled
	02/26/01		15.05	28.74	NS	NS	NS	NS	NS	NS	Not Sampled
	05/21/01		15.91	27.88	NS	NS	NS	NS	NS	NS	Not Sampled
	09/05/01		16.99	26.80	NS	NS	NS	NS	NS	NS	Not Sampled
	11/07/01		17.51	26.28	NS	NS	NS	NS	NS	NS	Not Sampled

TABLE 1

## GROUND WATER MONITORING DATA

Beacon Station No. 3721  
44 Lewelling Boulevard  
San Lorenzo, California

Monitoring Well	Date	Top of Riser Elevation (ft)	Depth to Water (ft)	Ground Water Elevation (ft)	Benzene (µg/L)	Toluene (µg/L)	Ethyl-benzene (µg/L)	Total Xylenes (µg/L)	TPH as gasoline (µg/L)	MTBE (µg/L)	Comments
MW-6	02/18/92	42.47	15.87	26.60	4.8	<0.5	<0.5	<0.5	370	NA	
	05/14/92		16.04	26.43	<0.5	<0.5	<0.5	<0.5	120	NA	
	08/27/92		18.17	24.30	1.2	<0.5	<0.5	<0.5	<50	NA	
	11/19/92		19.30	23.17	1.3	<0.5	1	1.1	66	NA	
	02/03/93		14.60	27.87	1.9	2.6	23	12	100	NA	
	06/23/93		15.00	27.47	<0.5	<0.5	<0.5	<0.5	<50	NA	No free product or sheen
	09/22/93		16.66	25.81	2.2	3.8	0.53	2.7	81	NA	No free product or sheen
	01/24/94		16.52	25.95	<0.5	<0.5	<0.5	<0.5	98	NA	
	04/07/94		15.70	26.77	0.71	<0.5	<0.5	<0.5	150	NA	No free product or sheen
	06/07/94		15.88	26.59	<0.5	<0.5	<0.5	<0.5	180	NA	No free product or sheen
	09/28/94		17.51	24.96	<0.5	<0.5	<0.5	<0.5	100	NA	No free product or sheen
	12/14/94		16.27	26.20	<0.5	<0.5	<0.5	<0.5	140	NA	No free product or sheen
	03/15/95		13.52	28.95	<0.5	<0.5	<0.5	<0.5	110	NA	No free product or sheen
	06/13/95		13.96	28.51	<0.5	0.87	<0.5	<0.5	150 <sup>a</sup>	NA	No free product or sheen
	09/28/95		15.61	26.86	0.78	<0.5	<0.5	<0.5	<50	NA	No free product or sheen
	12/28/95		15.54	26.93	<0.5	<0.5	<0.5	6.3	410	70	No free product or sheen
	01/30/96		NM	NC	1.0	<0.5	<0.5	11	81	46	Not measured
	03/12/96		11.88	30.59	<0.5	<0.5	<0.5	<0.5	<50	7	No free product or sheen
	06/11/96		13.52	28.95	<0.5	<0.5	<0.5	<0.5	<50	<5.0	No free product or sheen
	10/02/96		15.10	27.37	<0.5	<0.5	<0.5	<0.5	<50	<5.0	No free product or sheen
	01/28/97		11.18	31.29	<0.5	<0.5	<0.5	<0.5	<50	<5.0	No free product or sheen
	05/20/97		14.00	28.47	<0.5	<0.5	<0.5	<0.5	<50	<5.0	No free product or sheen
	08/18/97		15.54	26.93	<0.5	<0.5	<0.5	<0.5	<50	<5.0	No free product or sheen
	09/29/97		NM	NC	NS	NS	NS	NS	NS	NS	Not measured
	11/05/97		16.25	26.22	<0.5	<0.5	<0.5	<0.5	<50	<5.0/2.8 <sup>b</sup>	No free product or sheen
	03/31/98		10.60	31.87	<0.5	<0.5	<0.5	<0.5	<50	<5.0	No free product or sheen
	05/26/98		12.01	30.46	NS	NS	NS	NS	NS	NS	No free product or sheen
	05/28/98		NM	NC	<0.5	<0.5	<0.5	<0.5	<50	<5.0	No free product or sheen
	08/19/98		13.60	28.87	<0.5	<0.5	<0.5	<0.5	<50	<5.0	No free product or sheen

TABLE 1

## GROUND WATER MONITORING DATA

Beacon Station No. 3721  
44 Lewelling Boulevard  
San Lorenzo, California

Monitoring Well	Date	Top of Riser Elevation (ft)	Depth to Water (ft)	Ground Water Elevation (ft)	Benzene (µg/L)	Toluene (µg/L)	Ethyl-benzene (µg/L)	Total Xylenes (µg/L)	TPH as gasoline (µg/L)	MTBE (µg/L)	Comments
MW-6	11/17/98	42.47	14.53	27.94	<0.5	<0.5	<0.5	<0.5	<50	<5.0	No free product or sheen
(Cont.)	02/18/99		12.39	30.08	<0.5	<0.5	<0.5	<0.5	<50	<5.0	No free product or sheen
	06/24/99		13.89	28.58	NS	NS	NS	NS	NS	NS	Not sampled
	08/30/99		14.75	27.72	NS	NS	NS	NS	NS	NS	Not sampled
	11/09/99		15.18	27.29	NS	NS	NS	NS	NS	NS	Not sampled
	03/22/00		12.30	30.17	<0.5	<0.5	<0.5	<0.5	<50	<5.0	No free product or sheen
	06/12/00		13.69	28.78	NS	NS	NS	NS	NS	NS	Not sampled
	11/15/00		15.73	26.74	NS	NS	NS	NS	NS	NS	Not Sampled
	02/26/01		14.42	28.05	NS	NS	NS	NS	NS	NS	Not Sampled
	05/21/01		15.23	27.24	NS	NS	NS	NS	NS	NS	Not Sampled
	09/05/01		16.31	26.16	NS	NS	NS	NS	NS	NS	Not Sampled
	11/07/01		17.01	25.46	NS	NS	NS	NS	NS	NS	Not Sampled

TABLE 1

## GROUND WATER MONITORING DATA

Beacon Station No. 3721

44 Lewelling Boulevard

San Lorenzo, California

Monitoring Well	Date	Top of Riser Elevation (ft)	Depth to Water (ft)	Ground Water Elevation (ft)	Benzene (µg/L)	Toluene (µg/L)	Ethyl-benzene (µg/L)	Total Xylenes (µg/L)	TPH as gasoline (µg/L)	MTBE (µg/L)	Comments
MW-7	02/18/92	41.54	15.51	26.03	16	<0.5	10	16	670	NA	
	05/14/92		15.41	26.13	44	<0.5	38	88	1,500	NA	
	08/27/92		17.45	24.09	400	5.8	290	1,400	23,000	NA	
	11/19/92		18.54	23.00	29	<0.5	10	53	330	NA	
	02/03/93		14.10	27.44	200	<0.5	110	480	2,000	NA	
	06/23/93		14.33	27.21	20	<0.5	16	16	280	NA	No free product or sheen
	09/22/93		15.92	25.62	71	2.2	33	210	860	NA	No free product or sheen
	01/24/94		16.07	25.47	61	<1.3	10	160	900	NA	
	04/07/94		15.10	26.44	53	<0.5	7.1	49	630	NA	
	06/07/94		15.16	26.38	55	<0.5	14	24	730	NA	No free product or sheen
	09/28/94		16.82	24.72	21	<0.5	2.3	3.1	300	NA	No free product or sheen
	12/14/94		15.75	25.79	19	<0.5	3.3	32	430	NA	No free product or sheen
	03/15/95		14.00	27.54	0.88	<0.5	<0.5	<0.5	70	NA	No free product or sheen
	06/13/95		13.44	28.10	7.3	0.79	7.6	8.9	190	NA	No free product or sheen
	09/28/95		14.84	26.70	1.5	<0.5	1.2	0.84	60	NA	No free product or sheen
	12/28/95		14.55	26.99	<0.5	<0.5	0.91	0.69	60	10	No free product or sheen
	03/12/96		11.88	29.66	<0.5	<0.5	<0.5	<0.5	<50	11	No free product or sheen
	06/11/96		13.52	28.58	<0.5	<0.5	<0.5	<0.5	79	16	No free product or sheen
	10/02/96		14.50	27.04	<0.5	<0.5	<0.5	<0.5	<50	26	No free product or sheen
	01/28/97		11.08	30.46	<0.5	<0.5	<0.5	<0.5	<50	13	No free product or sheen
	05/20/97		13.46	28.08	<0.5	0.85	<0.5	<0.5	78	40	No free product or sheen
	08/18/97		14.95	26.59	<0.5	<0.5	<0.5	<0.5	<50	18	No free product or sheen
	09/29/97		NM	NC	NS	NS	NS	NS	NS	NS	Not measured
	11/05/97		15.43	26.11	<0.5	<0.5	<0.5	<0.5	<50	8.9/8.0 <sup>b</sup>	No free product or sheen
	03/31/98		10.25	31.29	<0.5	<0.5	<0.5	1.3	<5.0	6	No free product or sheen
	05/26/98		11.45	30.09	NS	NS	NS	NS	NS	NS	No free product or sheen
	05/28/98		NM	NC	<0.5	<0.5	<0.5	<0.5	<50	10	No free product or sheen
	08/19/98		13.08	28.46	<0.5	<0.5	<0.5	<0.5	<50	27	No free product or sheen
	11/17/98		13.93	27.61	<0.5	<0.5	<0.5	<0.5	<50	30	No free product or sheen



TABLE 1

## GROUND WATER MONITORING DATA

Beacon Station No. 3721  
44 Lewelling Boulevard  
San Lorenzo, California

Monitoring Well	Date	Top of Riser Elevation (ft)	Depth to Water (ft)	Ground Water Elevation (ft)	Benzene (µg/L)	Toluene (µg/L)	Ethyl-benzene (µg/L)	Total Xylenes (µg/L)	TPH as gasoline (µg/L)	MTBE (µg/L)	Comments
MW-7	02/18/99	41.54	12.16	29.38	<0.5	<0.5	<0.5	<0.5	51	22	No free product or sheen
(Cont.)	06/24/99		13.35	28.19	NS	NS	NS	NS	NS	NS	Not sampled
	08/30/99		14.23	27.31	NS	NS	NS	NS	NS	NS	Not sampled
	11/09/99		14.60	26.94	<0.5	<0.5	<0.5	<0.5	<50	16	No free product or sheen
	03/22/00		11.91	29.63	<0.5	<0.5	<0.5	<0.5	<50	18	No free product or sheen
	06/12/00		13.28	28.26	NS	NS	NS	NS	NS	NS	Not sampled
	11/15/00		15.12	26.42	<0.5	<0.5	<0.5	<0.5	<50	17	No free product or sheen
	02/26/01		13.46	28.08	NS	NS	NS	NS	NS	NS	Not Sampled
	05/21/01		14.31	27.23	NS	NS	NS	NS	NS	NS	Not Sampled
	09/05/01		15.42	26.12	NS	NS	NS	NS	NS	NS	Not Sampled
	11/07/01		16.18	25.36	<0.5	<0.5	<0.5	<0.5	<50	5.4	Not Sampled

TABLE 1

## GROUND WATER MONITORING DATA

Beacon Station No. 3721  
44 Lewelling Boulevard  
San Lorenzo, California

Monitoring Well	Date	Top of Riser Elevation (ft)	Depth to Water (ft)	Ground Water Elevation (ft)	Benzene (µg/L)	Toluene (µg/L)	Ethyl-benzene (µg/L)	Total Xylenes (µg/L)	TPH as gasoline (µg/L)	MTBE (µg/L)	Comments
MW-8	02/18/92	42.26	16.57	25.69	<0.5	<0.5	9.5	<0.5	1,200	NA	
	05/14/92		16.24	26.02	<0.5	<0.5	<0.5	<0.5	130	NA	
	08/27/92		18.28	23.98	<0.5	<0.5	<0.5	<0.5	140	NA	
	11/19/92		19.32	22.94	<0.5	<0.5	2.0	<0.5	320	NA	
	02/03/93		14.87	27.39	<0.5	<0.5	<0.5	<0.5	<50	NA	
	06/23/93		15.18	27.08	<0.5	<0.5	<0.5	<0.5	<50	NA	No free product or sheen
	09/22/93		18.79	23.47	<0.5	0.67	<0.5	<0.5	<50	NA	No free product or sheen
	01/24/94		17.06	25.20	<0.5	<0.5	<0.5	<0.5	290	NA	
	04/07/94		15.95	26.31	<0.5	<0.5	<0.5	<0.5	<50	NA	No free product or sheen
	06/07/94		15.10	27.16	<0.5	<0.5	<0.5	<0.5	<50	NA	No free product or sheen
	09/28/94		17.63	24.63	<0.5	<0.5	<0.5	<0.5	<50	NA	No free product or sheen
	12/14/94		16.66	25.60	<0.5	<0.5	<0.5	<0.5	<50	NA	No free product or sheen
	03/15/95		14.30	27.96	<0.5	<0.5	<0.5	<0.5	<50	NA	No free product or sheen
	06/13/95		14.37	27.89	<0.5	<0.5	<0.5	<0.5	<50	NA	No free product or sheen
	09/28/95		15.62	26.64	NS	NS	NS	NS	NS	NA	No free product or sheen
	12/28/95		15.62	26.64	<0.5	<0.5	<0.5	<0.5	<50	<5.0	No free product or sheen
	03/12/96		12.75	29.51	<0.5	<0.5	<0.5	<0.5	<50	<5.0	No free product or sheen
	06/11/96		13.94	28.32	<0.5	<0.5	<0.5	<0.5	<50	<5.0	No free product or sheen
	10/02/96		15.41	26.85	<0.5	<0.5	<0.5	<0.5	<50	<5.0	No free product or sheen
	01/28/97		12.30	29.96	<0.5	<0.5	<0.5	<0.5	<50	<5.0	No free product or sheen
	05/20/97		14.42	27.84	<0.5	<0.5	<0.5	<0.5	<50	<5.0	No free product or sheen
	08/18/97		16.16	26.10	<0.5	<0.5	<0.5	<0.5	<50	<5.0	No free product or sheen
	09/29/97		NM	NC	NS	NS	NS	NS	NS	NS	Not measured
	11/05/97		16.25	26.01	<0.5	<0.5	<0.5	<0.5	<50	<5.0/<0.5 <sup>b</sup>	No free product or sheen
	03/31/98		11.49	30.77	<0.5	<0.5	<0.5	<0.5	<50	<5.0	No free product or sheen
	05/26/98		12.60	29.66	NS	NS	NS	NS	NS	NS	No free product or sheen
	05/28/98		NM	NC	<0.5	<0.5	<0.5	<0.5	<50	<5.0	No free product or sheen
	08/19/98		14.15	28.11	<0.5	<0.5	<0.5	<0.5	<50	<5.0	No free Product or sheen
	11/17/98		14.98	27.28	<0.5	<0.5	<0.5	<0.5	<50	<5.0	No free product or sheen

TABLE 1

## GROUND WATER MONITORING DATA

Beacon Station No. 3721  
44 Lewelling Boulevard  
San Lorenzo, California

Monitoring Well	Date	Top of Riser Elevation (ft)	Depth to Water (ft)	Ground Water Elevation (ft)	Benzene (µg/L)	Toluene (µg/L)	Ethyl-benzene (µg/L)	Total Xylenes (µg/L)	TPH as gasoline (µg/L)	MTBE (µg/L)	Comments
MW-8	02/18/99	42.26	13.41	28.85	<0.5	<0.5	<0.5	<0.5	<50	<5.0	No free product or sheen
(Cont.)	06/24/99		14.35	27.91	NS	NS	NS	NS	NS	NS	Not sampled
	08/30/99		15.16	27.10	NS	NS	NS	NS	NS	NS	Not sampled
	11/09/99		15.61	26.65	NS	NS	NS	NS	NS	NS	Not sampled
	03/22/00		13.17	29.09	<0.5	<0.5	<0.5	<0.5	<50	<5.0	No free product or sheen
	06/12/00		14.19	28.07	NS	NS	NS	NS	NS	NS	Not sampled
	11/15/00		16.04	26.22	NS	NS	NS	NS	NS	NS	Not Sampled
	02/26/01		12.99	29.27	NS	NS	NS	NS	NS	NS	Not Sampled
	05/21/01		13.86	28.40	NS	NS	NS	NS	NS	NS	Not Sampled
	09/05/01		14.91	27.35	NS	NS	NS	NS	NS	NS	Not Sampled
	11/07/01		15.62	26.64	NS	NS	NS	NS	NS	NS	Not Sampled

TABLE 1

## GROUND WATER MONITORING DATA

Beacon Station No. 3721  
44 Lewelling Boulevard  
San Lorenzo, California

Monitoring Well	Date	Top of Riser Elevation (ft)	Depth to Water (ft)	Ground Water Elevation (ft)	Benzene (µg/L)	Toluene (µg/L)	Ethyl-benzene (µg/L)	Total Xylenes (µg/L)	TPH as gasoline (µg/L)	MTBE (µg/L)	Comments
MW-9	02/18/92	44.94	18.87	26.07	<0.5	<0.5	<0.5	<0.5	<50	NA	
	05/14/92		18.55	26.39	<0.5	<0.5	<0.5	<0.5	<50	NA	
	08/27/92		20.80	24.14	<0.5	<0.5	<0.5	<0.5	<50	NA	
	11/19/92		21.90	23.04	<0.5	<0.5	<0.5	1.3	<50	NA	
	02/03/93		17.25	27.69	<0.5	<0.5	<0.5	<0.5	<50	NA	
	06/23/93		17.61	27.33	<0.5	<0.5	<0.5	<0.5	<50	NA	No free product or sheen
	09/22/93		19.18	25.76	<0.5	<0.5	<0.5	<0.5	<50	NA	No free product or sheen
	01/24/94		19.17	25.77	<0.5	<0.5	<0.5	<0.5	<50	NA	
	04/07/94		18.23	26.71	<0.5	<0.5	<0.5	<0.5	<50	NA	No free product or sheen
	06/07/94		18.40	26.54	<0.5	<0.5	<0.5	<0.5	<50	NA	No free product or sheen
	09/28/94		20.01	24.93	<0.5	<0.5	<0.5	<0.5	<50	NA	No free product or sheen
	12/14/94		18.88	26.06	<0.5	<0.5	<0.5	<0.5	<50	NA	No free product or sheen
	03/15/95		16.24	28.70	<0.5	<0.5	<0.5	<0.5	<50	NA	No free product or sheen
	06/13/95		16.75	28.19	<0.5	<0.5	<0.5	<0.5	<50	NA	No free product or sheen
	09/28/95		18.04	26.90	<0.5	<0.5	<0.5	<0.5	<50	NA	No free product or sheen
	12/28/95		17.87	27.07	<0.5	<0.5	<0.5	<0.5	<50	<5.0	No free product or sheen
	03/12/96		NM	NC	NS	NS	NS	NS	NS	NS	Not measured
	06/11/96		16.26	28.68	<0.5	<0.5	<0.5	<0.5	<50	<5.0	No free product or sheen
	10/02/96		17.74	27.20	<0.5	<0.5	<0.5	<0.5	<50	<5.0	No free product or sheen
	01/28/97		14.51	30.43	<0.5	<0.5	<0.5	<0.5	<50	<5.0	No free product or sheen
	05/20/97		16.73	28.21	<0.5	<0.5	<0.5	<0.5	<50	<5.0	No free product or sheen
	08/18/97		NM	NC	NS	NS	NS	NS	NS	NS	Not measured
	09/29/97		NM	NC	NS	NS	NS	NS	NS	NS	Not measured
	11/05/97		18.61	26.33	<0.5	<0.5	<0.5	<0.5	<50	<5.0/<0.5 <sup>b</sup>	No free product or sheen
	03/31/98		NM	NC	NS	NS	NS	NS	NS	NS	Not measured
	05/26/98		15.28	29.66	NS	NS	NS	NS	NS	NS	No free product or sheen
	05/28/98		NM	NC	NS	NS	NS	NS	NS	NS	Not measured
	08/19/98		16.55	28.39	<0.5	<0.5	<0.5	<0.5	<50	<5.0	No free product or sheen
	11/17/98		17.32	27.62	<0.5	<0.5	<0.5	<0.5	<50	<5.0	No free product or sheen

TABLE 1

## GROUND WATER MONITORING DATA

Beacon Station No. 3721  
44 Lewelling Boulevard  
San Lorenzo, California

Monitoring Well	Date	Top of Riser Elevation (ft)	Depth to Water (ft)	Ground Water Elevation (ft)	Benzene (µg/L)	Toluene (µg/L)	Ethyl-benzene (µg/L)	Total Xylenes (µg/L)	TPH as gasoline (µg/L)	MTBE (µg/L)	Comments
MW-9	02/18/99	44.94	15.74	29.20	<0.5	<0.5	<0.5	<0.5	<50	<5.0	No free product or sheen
(Cont.)	06/24/99		16.73	28.21	NS	NS	NS	NS	NS	NS	Not sampled
	08/30/99		17.48	27.46	NS	NS	NS	NS	NS	NS	Not sampled
	11/09/99		17.98	26.96	NS	NS	NS	NS	NS	NS	Not sampled
	03/22/00		15.46	29.48	<0.5	<0.5	<0.5	<0.5	<50	<5.0	No free product or sheen
	06/12/00		16.70	28.24	NS	NS	NS	NS	NS	NS	Not sampled
	11/15/00		18.65	26.29	NS	NS	NS	NS	NS	NS	Not Sampled
	02/26/01		14.80	30.14	NS	NS	NS	NS	NS	NS	Not Sampled
	05/21/01		15.68	29.26	NS	NS	NS	NS	NS	NS	Not Sampled
	09/05/01		16.70	28.24	NS	NS	NS	NS	NS	NS	Not Sampled
	11/07/01		17.23	27.71	NS	NS	NS	NS	NS	NS	Not Sampled

TABLE 1

## GROUND WATER MONITORING DATA

Beacon Station No. 3721  
44 Lewelling Boulevard  
San Lorenzo, California

Monitoring Well	Date	Top of Riser Elevation (ft)	Depth to Water (ft)	Ground Water Elevation (ft)	Benzene (µg/L)	Toluene (µg/L)	Ethyl-benzene (µg/L)	Total Xylenes (µg/L)	TPH as gasoline (µg/L)	MTBE (µg/L)	Comments
MW-10	02/18/92	42.34	16.63	25.71	110	57	440	53	18,000	NA	
	05/14/92		15.25	27.09	NS	NS	NS	NS	NS	NS	
	05/15/92		NM	NC	24	9.8	97	<0.5	8,500	NA	
	08/27/92		18.35	23.99	NS	NS	NS	NS	NS	NS	
	08/29/92		NM	NC	20	2.8	40	3.5	9,600	NA	
	11/19/92		19.43	22.91	36	21	330	31	5,700	NA	
	02/03/93		15.01	27.33	15	4.6	36	9.6	2,200	NA	
	06/23/93		15.30	27.04	21	24	540	45	8,100	NA	No free product or sheen
	09/22/93		16.90	25.44	22	17	350	16	6,200	NA	No free product or sheen
	01/24/94		NM	NC	NS	NS	NS	NS	NS	NA	Not measured
	04/07/94		15.97	26.37	6.4	2.9	150	4.7	4,000	NA	No free product or sheen
	06/07/94		16.04	26.30	5.6	<2.5	150	5.7	6,700	NA	No free product or sheen
	09/28/94		17.69	24.65	2.2	2.6	110	44	5,700	NA	No free product or sheen
	12/14/94		16.65	25.69	<1.3	<1.3	77	27	3,500	NA	No free product or sheen
	03/15/95		14.08	28.26	<5.0	6.7	150	23	7,200	NA	No free product or sheen
	06/13/95		14.49	27.85	9	48	610	130	8,400	NA	No free product or sheen
	09/28/95		15.81	26.53	22	17	360	24	6,300	NA	No free product or sheen
	12/28/95		15.46	26.88	4.4	5.6	340	11	5,000	37	No free product or sheen
	03/12/96		12.62	29.72	1.4	5.9	41	73	4,500	120	No free product or sheen
	06/11/96		14.40	27.94	<5.0	25	350	81	7,500	<25	No free product or sheen
	10/02/96		15.47	26.87	18	<2.5	<2.5	<2.5	2,600	<25	No free product or sheen
	01/28/97		15.69	26.65	5.9	<2.5	29	19	2,800	<25	No free product or sheen
	05/20/97		14.48	27.86	<20	34	290	74	6,000	<100	No free product or sheen
	08/18/97		15.91	26.43	<20	7.7	94	15	5,900	<50	No free product or sheen
	09/29/97		NM	NC	NS	NS	NS	NS	NS	NS	Not measured
	11/05/97		16.32	26.02	1.1	0.86	47	1.6	5,400	<50/2.3 <sup>b</sup>	No free product or sheen
	03/31/98		12.25	30.09	56	180	1,400	3,700	20,000	250	No free product or sheen
	05/26/98		12.97	29.37	NS	NS	NS	NS	NS	NS	No free product or sheen
	05/28/98		NM	NC	76	200	1,600	3,900	16,000	190	No free product or sheen

TABLE 1

## GROUND WATER MONITORING DATA

Beacon Station No. 3721  
 44 Lewelling Boulevard  
 San Lorenzo, California

Monitoring Well	Date	Top of Riser Elevation (ft)	Depth to Water (ft)	Ground Water Elevation (ft)	Benzene (µg/L)	Toluene (µg/L)	Ethyl-benzene (µg/L)	Total Xylenes (µg/L)	TPH as gasoline (µg/L)	MTBE (µg/L)	Comments
MW-10	08/19/98	42.34	14.27	28.07	95	160	1,300	1,700	14,000	<100	No free product or sheen
(Cont.)	11/17/98		15.08	27.26	82	64	590	150	7500	290	No free product or sheen
	02/18/99		13.61	28.73	41	16	270	79	4,700	<100	No free product or sheen
	06/24/99		14.50	27.84	27	74	280	160	9,400	300	No free product or sheen
	08/30/99		15.26	27.08	15	33	160	33	8,500	290	No free product or sheen
	11/09/99		15.72	26.62	3.9	11	60	14	7,600	120	No free product or sheen
	03/22/00		13.40	28.94	3.5	33	360	320	5,800	160	No free product or sheen
	06/12/00		14.42	27.92	4.3	47	370	210	7,200	270	No free product or sheen
	11/15/00		16.75	25.59	0.54	2.2	3.8	7.3	4,400	420	No free product or sheen
	02/26/01		14.73	27.61	<1.0	2.5	24	13	5,000	860	No free product or sheen
	05/21/01		15.25	27.09	<0.5	3.2	4.1	12	3,500	530	No free product or sheen
	09/05/01		16.35	25.99	<2.0	<2.0	<2.0	4.1	3,400	770	No free product or sheen
	11/07/01		17.05	25.29	<0.5	0.64	0.75	2.7	3,600	790	No free product or sheen

TABLE 1

## GROUND WATER MONITORING DATA

Beacon Station No. 3721  
44 Lewelling Boulevard  
San Lorenzo, California

Monitoring Well	Date	Top of Riser Elevation (ft)	Depth to Water (ft)	Ground Water Elevation (ft)	Benzene (µg/L)	Toluene (µg/L)	Ethyl-benzene (µg/L)	Total Xylenes (µg/L)	TPH as gasoline (µg/L)	MTBE (µg/L)	Comments
MW-11	02/18/92	45.00	17.00	28.00	<0.5	<0.5	<0.5	<0.5	2,400	NA	
	05/14/92		19.02	25.98	<0.5	1.9	1.3	0.7	1,600	NA	
	08/27/92		21.13	23.87	15	2	0.6	1.2	2,100	NA	
	11/19/92		17.91	27.09	<0.5	<0.5	<0.5	<0.5	490	NA	
	02/03/92		17.91	27.09	<0.5	<0.5	0.55	<0.5	500	NA	
	06/23/93		18.14	26.86	<0.5	<0.5	<0.5	<0.5	350	NA	No free product or sheen
	09/22/93		19.63	25.37	<0.5	0.65	<0.5	0.71	200	NA	No free product or sheen
	01/24/94		19.79	25.21	<0.5	<0.5	<0.5	<0.5	450	NA	
	04/07/94		18.78	26.22	<0.5	<0.5	<0.5	<0.5	500	NA	No free product or sheen
	06/07/94		18.88	26.12	<0.5	<0.5	<0.5	0.64	560	NA	No free product or sheen
	09/28/94		20.45	24.55	<0.5	<0.5	<0.5	<0.5	600	NA	No free product or sheen
	12/14/94		19.45	25.55	<0.5	<0.5	<0.5	<0.5	340	NA	No free product or sheen
	03/15/95		17.32	27.68	<0.5	<0.5	<0.5	<0.5	340	NA	No free product or sheen
	06/13/95		17.43	27.57	<0.5	<0.5	<0.5	<0.5	210 <sup>a</sup>	NA	No free product or sheen
	09/28/95		18.67	26.33	4.1	0.5	<0.5	<0.5	93	NA	No free product or sheen
	12/28/95		18.31	26.69	<0.5	<0.5	<0.5	<0.5	380 <sup>a</sup>	<5.0	No free product or sheen
	03/12/96		15.89	29.11	<0.5	<0.5	<0.5	<0.5	110	<5.0	No free product or sheen
	06/11/96		16.98	28.02	<0.5	<0.5	<0.5	<0.5	400 <sup>a</sup>	<5.0	No free product or sheen
	10/02/96		18.20	26.80	<0.5	<0.5	<0.5	<0.5	<50	<5.0	No free product or sheen
	01/28/97		12.53	32.47	<0.5	<0.5	<0.5	<0.5	110 <sup>a</sup>	<5.0	No free product or sheen
	05/20/97		17.36	27.64	<0.5	<0.5	<0.5	<0.5	330	<5.0	No free product or sheen
	08/18/97		18.84	26.16	<0.5	<0.5	<0.5	<0.5	<50	<5.0	No free product or sheen
	09/29/97		NM	NC	NS	NS	NS	NS	NS	NS	Not measured
	11/05/97		NM	NC	NS	NS	NS	NS	NS	NS	Not measured
	03/31/98		15.39	29.61	<0.5	2.8	12	16	460	<5.0	No free product or sheen
	05/26/98		16.25	28.75	NS	NS	NS	NS	NS	NS	No free product or sheen
	05/28/98		NM	NC	14	24	88	75	1,100	24	No free product or sheen
	08/19/98		17.30	27.70	16	9.6	69	17	1,200	6	No free product or sheen
	11/17/98		18.05	26.95	15	4.4	14	<0.5	580	21	No free product or sheen



TABLE 1

## GROUND WATER MONITORING DATA

Beacon Station No. 3721  
44 Lewelling Boulevard  
San Lorenzo, California

Monitoring Well	Date	Top of Riser Elevation (ft)	Depth to Water (ft)	Ground Water Elevation (ft)	Benzene (µg/L)	Toluene (µg/L)	Ethyl-benzene (µg/L)	Total Xylenes (µg/L)	TPH as gasoline (µg/L)	MTBE (µg/L)	Comments
MW-11	02/18/99	45.00	16.87	28.13	8.0	<0.5	1.4	<0.5	390	44	No free product or sheen
(Cont.)	06/24/99		17.50	27.50	4.6	<0.5	0.66	<0.5	610	59	No free product or sheen
	08/30/99		18.19	26.81	NS	NS	NS	NS	NS	NS	Not sampled
	11/09/99		18.64	26.36	0.87	<0.5	<0.5	<0.5	250	66	No free product or sheen
	03/22/00		16.52	28.48	<0.5	<0.5	<0.5	<0.5	330	100	No free product or sheen
	06/12/00		17.44	27.56	<0.5	<0.5	<0.5	<0.5	52	49	No free product or sheen
	11/15/00		19.07	25.93	<0.5	<0.5	<0.5	<0.5	<50	1.8	
	02/26/01		17.80	27.20	NS	NS	NS	NS	NS	NS	Not Sampled
	05/21/01		18.23	26.77	<0.5	<0.5	<0.5	<0.5	<50	30	No free product or sheen
	09/05/01		19.21	25.79	NS	NS	NS	NS	NS	NS	Not Sampled
	11/07/01		19.80	25.20	<0.5	<0.5	<0.5	<0.5	360	330	No free product or sheen

TABLE 1

## GROUND WATER MONITORING DATA

Beacon Station No. 3721  
44 Lewelling Boulevard  
San Lorenzo, California

Monitoring Well	Date	Top of Riser Elevation (ft)	Depth to Water (ft)	Ground Water Elevation (ft)	Benzene (µg/L)	Toluene (µg/L)	Ethyl-benzene (µg/L)	Total Xylenes (µg/L)	TPH as gasoline (µg/L)	MTBE (µg/L)	Comments
RW-1	05/14/92	43.17	16.88	26.29	NS	NS	NS	NS	NS	NS	
	05/15/92		NM	NC	270	62	29	140	790	NA	
	08/27/92		19.05	24.12	1,300	200	68	810	24,000	NA	
	11/19/92		21.11	22.07	NS	NS	NS	NS	NS	NS	
	02/03/92		15.48	27.69	71	35	22	110	620	NA	
	06/23/93		28.25	14.92	30	33	9.8	35	220	NA	No free product or sheen
	09/22/93		17.83	25.34	800	400	170	910	4,100	NA	No free product or sheen
	01/24/94		24.00	19.17	33	6	6.9	23	190	NA	
	04/07/94		16.05	27.12	110	57	32	260	1,500	NA	No free product or sheen
	06/07/94		16.00	27.17	130	51	45	180	1,700	NA	No free product or sheen
	09/28/94		18.35	24.82	54	9.2	12	29	350	NA	No free product or sheen
	12/14/94		19.50	23.67	6.8	2.1	1.2	3.4	79	NA	No free product or sheen
	03/15/95		17.00	26.17	NS	NS	NS	NS	NS	NS	No free product or sheen
	04/10/95		NM	NC	54	11	11	69	410	NA	Not measured
	06/13/95		14.95	28.22	1,600	780	340	1,400	8,200	NA	No free product or sheen
	09/28/95		27.63	15.54	<0.5	<0.5	<0.5	<0.5	<50	NA	No free product or sheen
	12/28/95		14.54	28.63	<0.5	<0.5	<0.5	<0.5	<50	<5.0	No free product or sheen
	03/12/96		11.02	32.15	<0.5	<0.5	<0.5	<0.5	86	110	No free product or sheen
	06/11/96		14.52	28.65	38	11	4.7	50	230	68	No free product or sheen
	10/02/96		15.53	27.64	68	29	14	75	360	47	No free product or sheen
	01/28/97		12.59	30.58	0.77	<0.5	<0.5	<0.5	<50	9	No free product or sheen
	05/20/97		14.85	28.32	<0.5	<0.5	<0.5	<0.5	<50	32	No free product or sheen
	08/18/97		16.19	26.98	25	<0.5	<0.5	3.6	220	170	No free product or sheen
	09/29/97		NM	NC	240	2.8	51	55	900	230	Not measured
	11/05/97		16.95	26.22	340	3.2	59	78	1,300	240/220 <sup>b</sup>	No free product or sheen
	03/31/98		11.85	31.32	450	130	200	940	4,100	4,100	No free product or sheen
	05/26/98		13.13	30.04	NS	NS	NS	NS	NS	NS	No free product or sheen
	05/28/98		NM	NC	830	210	170	720	17,000	14,000	No free product or sheen
	08/19/98		14.70	28.47	20	<2.5	7.1	15	540	2,100	No free product or sheen

TABLE 1

## GROUND WATER MONITORING DATA

Beacon Station No. 3721  
44 Lewelling Boulevard  
San Lorenzo, California

Monitoring Well	Date	Top of Riser Elevation (ft)	Depth to Water (ft)	Ground Water Elevation (ft)	Benzene (µg/L)	Toluene (µg/L)	Ethyl-benzene (µg/L)	Total Xylenes (µg/L)	TPH as gasoline (µg/L)	MTBE (µg/L)	Comments
RW-1	11/17/98	43.17	15.54	27.63	7.8	<2.5	5.6	<2.5	630	730	No free product or sheen
(cont)	02/18/99		13.75	29.42	6.7	1.6	3.2	15	180	100	No free product or sheen
	06/24/99		14.96	28.21	<0.5	<0.5	<0.5	<0.5	<50	42	No free product or sheen
	08/30/99		15.75	27.42	<0.5	<0.5	<0.5	<0.5	<50	79	No free product or sheen
	11/09/99		17.45	25.72	<0.5	<0.5	<0.5	<0.5	<50	78	No free product or sheen
	03/22/00		13.51	29.66	1.2	<0.5	<0.5	<0.5	<50	17	No free product or sheen
	06/12/00		13.65	29.52	<0.5	<0.5	<0.5	1.0	<50	40	No free product or sheen
	11/15/00		29.45	13.72	<0.5	<0.5	<0.5	<0.5	<50	290	No free product or sheen
	02/26/01		28.40	14.77	<0.5	<0.5	<0.5	<0.5	<50	360	No free product or sheen
	05/21/01		43.17	27.81	4.1	1.6	1.8	23	100	170	No free product or sheen
	09/05/01		26.90	16.27	33	<0.5	<0.5	<0.5	73	310	No free product or sheen
	11/07/01		28.41	14.76	<0.5	<0.5	<0.5	<0.5	<50	240	No free product or sheen

<sup>a</sup> Product is not typical gasoline.

<sup>b</sup> MTBE by EPA Method 8020/EPA Method 8260.

<sup>c</sup> Constituents by EPA Method 8260.

Top of Riser Elevations = Elevations surveyed by Aegis Environmental and are assumed relative to mean sea level.

TPH = Total petroleum hydrocarbons.

MTBE = Methyl tertiary butyl ether.

µg/L = Micrograms per liter.

NS = Not sampled.

NM = Not measured.

NC = Not calculated.

NA = Not analyzed.

Note: Aegis Environmental, Inc. collected data prior to June 23, 1993.

Table 2  
Ground Water System Performance Data Sheet  
Beacon Station No. 3721

Site Visit (Date)	Totalizer	Change in Totalizer	Sample ID	Concentrations in Micrograms per liter ( µg/L)						ppm		pH
				Benzene	Toluene	Ethyl - Benzene	Total Xylenes	TPHg <sup>a</sup>	MTBE <sup>b</sup>	COD <sup>c</sup>	TSS <sup>d</sup>	
10/4/00	190,140	0	NS	NS	NS	NS	NS	NS	NS	NS	NS	NS
10/17/00	190,140	0	NS	NS	NS	NS	NS	NS	NS	NS	NS	NS
11/10/00	190,440	300	NS	NS	NS	NS	NS	NS	NS	NS	NS	NS
11/29/00	200,600	10,460	Influent	14	<0.5	<0.5	1.1	96	NA	NA	NA	NA
			Dat-Eff	<0.5	<0.5	<0.5	<0.5	<50	NA	NA	NA	NA
			Mid-1	<0.5	<0.5	<0.5	<0.5	<50	NA	NA	NA	NA
			Mid-2	<0.5	<0.5	<0.5	<0.5	<50	NA	NA	NA	NA
			Effluent	<0.5	<0.5	<0.5	<0.5	<50	NA	NA	NA	NA
12/7/00	201,010	410	Influent	14	<0.5	<0.5	<0.5	56	NA	NA	NA	NA
			Dat-Eff	<0.5	<0.5	<0.5	<0.5	<50	NA	NA	NA	NA
			Mid-1	<0.5	<0.5	<0.5	<0.5	<50	NA	NA	NA	NA
			Mid-2	<0.5	<0.5	<0.5	<0.5	<50	NA	NA	NA	NA
			Effluent	<0.5	<0.5	<0.5	<0.5	<50	NA	NA	NA	NA
12/20/00	218,900	17,890	NS	NS	NS	NS	NS	NS	NS	NS	NS	
01/04/01	218,970	70	NS	NS	NS	NS	NS	NS	NS	NS	NS	
01/19/01	110	100	Influent	<0.5	<0.5	<0.5	<0.5	<50	NA	NA	NA	NA
			Dat-Eff	<0.5	<0.5	<0.5	<0.5	<50	NA	NA	NA	NA
			Mid-1	<0.5	<0.5	<0.5	<0.5	<50	NA	NA	NA	NA
			Mid-2	<0.5	<0.5	<0.5	<0.5	<50	NA	NA	NA	NA
			Effluent	<0.5	<0.5	<0.5	<0.5	<50	NA	NA	NA	NA
02/15/01	12,730	12,620	NS	NS	NS	NS	NS	NS	NS	NS	NS	
02/23/01	21,900	9,170	Influent	<0.5	<0.5	<0.5	<0.5	<50	240	NA	NA	NA
			Dat-Eff	<0.5	<0.5	<0.5	<0.5	<50	1.8	NA	NA	NA
			Mid-1	<0.5	<0.5	<0.5	<0.5	<50	7.3	NA	NA	NA
			Mid-2	<0.5	<0.5	<0.5	<0.5	<50	<0.5	NA	NA	NA
			Effluent	<0.5	<0.5	<0.5	<0.5	<50	1.4	<10	5.0	7.63

Table 2  
Ground Water System Performance Data Sheet  
Beacon Station No. 3721

Site Visit (Date)	Totalizer	Change in Totalizer	Sample ID	Concentrations in Micrograms per liter ( µg/L)						ppm		pH
				Benzene	Toluene	Ethyl - Benzene	Total Xylenes	TPHg <sup>a</sup>	MTBE <sup>b</sup>	COD <sup>c</sup>	TSS <sup>d</sup>	
03/01/01	22,260	360	Influent	<0.5	<0.5	<0.5	<0.5	<50	NA	NA	NA	NA
			Dat-Eff	<0.5	<0.5	<0.5	<0.5	<50	NA	NA	NA	NA
			Mid-1	<0.5	<0.5	<0.5	<0.5	<50	NA	NA	NA	NA
			Mid-2	<0.5	<0.5	<0.5	<0.5	<50	NA	NA	NA	NA
			Effluent	<0.5	<0.5	<0.5	<0.5	<50	NA	<10	<5.0	7.49
03/23/01	50,000	27,740	NS	NS	NS	NS	NS	NS	NS	NS	NS	NS
04/05/01	118,900	68,900	Influent	<0.5	<0.5	<0.5	<0.5	<50	320	NA	NA	NA
			Dat-Eff	<0.5	<0.5	<0.5	<0.5	<50	<5.0	NA	NA	NA
			Mid-1	<0.5	<0.5	<0.5	<0.5	<50	65	NA	NA	NA
			Mid-2	<0.5	<0.5	<0.5	<0.5	<50	9.2	NA	NA	NA
			Effluent	<0.5	<0.5	<0.5	<0.5	<50	<5.0	<10	<5.0	7.79
04/18/01	140,190	21,290	NS	NS	NS	NS	NS	NS	NS	NS	NS	NS
05/15/01	159,810	19,620	NS	NS	NS	NS	NS	NS	NS	NS	NS	NS
05/21/01	172,540	12,730	Influent	3.8	1.4	1.3	16	67	NA	NA	NA	NA
			Dat-Eff	<0.5	<0.5	<0.5	<0.5	<50	NA	NA	NA	NA
			Mid-1	<0.5	<0.5	<0.5	<0.5	<50	NA	NA	NA	NA
			Mid-2	<0.5	<0.5	<0.5	<0.5	<50	NA	NA	NA	NA
			Effluent	<0.5	<0.5	<0.5	<0.5	<50	NA	<10	<5.0	7.90
06/05/01	185,810	13,270	NS	NS	NS	NS	NS	NS	NS	NS	NS	NS
06/21/01	185,830	20	Influent	2.9	<0.5	<0.5	<0.5	<50	NA	NA	NA	NA
			Dat-Eff	<0.5	<0.5	<0.5	<0.5	<50	NA	NA	NA	NA
			Mid-1	<0.5	<0.5	<0.5	<0.5	<50	NA	NA	NA	NA
			Mid-2	<0.5	<0.5	<0.5	<0.5	<50	NA	NA	NA	NA
			Effluent	<0.5	<0.5	<0.5	<0.5	<50	NA	<10	<5.0	7.44

Table 2  
Ground Water System Performance Data Sheet  
Beacon Station No. 3721

Site Visit (Date)	Totalizer	Change in Totalizer	Sample ID	Concentrations in Micrograms per liter ( µg/L)						ppm		pH
				Benzene	Toluene	Ethyl - Benzene	Total Xylenes	TPHg <sup>a</sup>	MTBE <sup>b</sup>	COD <sup>c</sup>	TSS <sup>d</sup>	
07/05/01	186,000	170	Influent	3.6	<0.5	<0.5	<0.5	<50	290	NA	NA	NA
			Dat-Eff	<0.5	<0.5	<0.5	<0.5	100	8.3	NA	NA	NA
			Mid-1	<0.5	<0.5	<0.5	<0.5	<50	47	NA	NA	NA
			Mid-2	<0.5	<0.5	<0.5	<0.5	<50	12	NA	NA	NA
			Effluent	<0.5	<0.5	<0.5	<0.5	<50	<5.0	<10	<5.0	6.99
07/16/01	NM	NM	NS	NS	NS	NS	NS	NS	NS	NS	NS	NS
08/17/01	186,040	40	NS	NS	NS	NS	NS	NS	NS	NS	NS	NS
08/24/01	207,160	21,120	Influent	8.5	<0.5	<0.5	1.4	<50	370	NA	NA	NA
			Dat-Eff	<0.5	<0.5	<0.5	<0.5	100	62	NA	NA	NA
			Mid-1	<0.5	<0.5	<0.5	<0.5	<50	90	NA	NA	NA
			Mid-2	<0.5	<0.5	<0.5	<0.5	<50	25	NA	NA	NA
			Effluent	<0.5	<0.5	<0.5	<0.5	<50	<5.0	<10	<5.0	7.79
09/06/01	233,430	26,270	Influent	66	0.93	<0.5	6.3	150	650	NA	NA	NA
			Dat-Eff	<0.5	<0.5	<0.5	<0.5	<50	6.0	NA	NA	NA
			Mid-1	<0.5	<0.5	<0.5	<0.5	<50	67	NA	NA	NA
			Mid-2	<0.5	<0.5	<0.5	<0.5	<50	24	NA	NA	NA
			Effluent	<0.5	<0.5	<0.5	<0.5	<50	<5.0	<10	<5.0	7.62
09/29/01	239,410	5,980	NS	NS	NS	NS	NS	NS	NS	NS	NS	
10/08/01	273,690	34,280	NS	NS	NS	NS	NS	NS	NS	NS	NS	
10/19/01	273,800	110	NS	NS	NS	NS	NS	NS	NS	NS	NS	
11/02/01	352,260	78,460	NS	NS	NS	NS	NS	NS	NS	NS	NS	
11/23/01	394,260	42,000	Influent	22	<2.0	<2.0	<2.0	<200	630	NA	NA	NA
			Dat-Eff	<0.5	<0.5	<0.5	<0.5	<50	<5.0	NA	NA	NA
			Mid-1	<0.5	<0.5	<0.5	<0.5	<50	31	NA	NA	NA
			Mid-2	<0.5	<0.5	<0.5	<0.5	<50	<5.0	NA	NA	NA
			Effluent	<0.5	<0.5	<0.5	<0.5	<50	<5.0	<10	<5.0	9.07/7.82**

Table 2  
Ground Water System Performance Data Sheet  
Beacon Station No. 3721

Site Visit (Date)	Totalizer	Change in Totalizer	Sample ID	Concentrations in Micrograms per liter ( µg/L)						ppm		pH
				Benzene	Toluene	Ethyl - Benzene	Total Xylenes	TPHg <sup>a</sup>	MTBE <sup>b</sup>	COD <sup>c</sup>	TSS <sup>d</sup>	
12/13/01	400,690	6,430	Influent	5.7	<1.0	<1.0	<1.0	<100	370	NA	NA	NA
			Dat-Eff	<0.5	<0.5	<0.5	<0.5	<50	<5.0	NA	NA	NA
			Mid-1	<0.5	<0.5	<0.5	<0.5	<50	31	NA	NA	NA
			Mid-2	<0.5	<0.5	<0.5	<0.5	<50	<5.0	NA	NA	NA
			Effluent	<0.5	<0.5	<0.5	<0.5	<50	<5.0	<10	NA	7.66**
12/27/01	437,150	36,460	NS	NS	NS	NS	NS	NS	NS	NS	NS	NS

Total Gallons Treated = (totalizer reading + 218,970 gallons)

\* = changed out totalizer

\*\* = Field Measurements

ppm = parts per million

Notes:

a) Total Petroleum Hydrocarbon as gasoline

b) Methyl-t-butyl ether

c) C.O.D. = Chemical oxygen demand.

d) T.S.S. = Total suspended solids.

**TABLE 3**  
**SVE SYSTEM ANALYTICAL RESULTS**  
 Beacon Staton No. 3721  
 44 Lewelling Boulevard  
 San Lorenzo, California

Sample I.D.	Date	Benzene (ppmv)	Toluene (ppmv)	Ethyl-benzene (ppmv)	Total Xylenes (ppmv)	TPH as gasoline (ppmv)	MTBE (ppmv)
Influent	4/7/00	<0.05	<0.05	<0.05	<0.05	<5.0	NA
Mid Air	4/7/00	<0.05	<0.05	<0.05	<0.05	<5.0	NA
Effluent	4/7/00	<0.05	<0.05	<0.05	<0.05	<5.0	NA
Influent	5/10/00	<0.05	<0.05	<0.05	<0.05	<5.0	NA
Mid Air	5/10/00	<0.05	<0.05	<0.05	<0.05	<5.0	NA
Effluent	5/10/00	<0.05	<0.05	<0.05	<0.05	<5.0	NA
Influent	6/8/00	<0.05	<0.05	<0.05	<0.05	<5.0	NA
Mid Air	6/8/00	<0.05	<0.05	<0.05	<0.05	<5.0	NA
Effluent	6/8/00	<0.05	<0.05	<0.05	<0.05	<5.0	NA
Influent	11/29/00	<0.05	<0.05	<0.05	<0.05	<5.0	NA
Mid Air	11/29/00	<0.05	<0.05	<0.05	<0.05	<5.0	NA
Effluent	11/29/00	<0.05	<0.05	<0.05	<0.05	<5.0	NA
Influent	12/7/00	<0.05	<0.05	<0.05	<0.05	<5.0	<0.10
Mid Air	12/7/00	<0.05	<0.05	<0.05	<0.05	<5.0	<0.10
Effluent	12/7/00	<0.05	<0.05	<0.05	<0.05	<5.0	<0.10
Influent	1/19/01	<0.05	<0.05	<0.05	<0.05	<5.0	<0.10
Mid Air	1/19/01	<0.05	<0.05	<0.05	0.053	<5.0	<0.10
Effluent	1/19/01	<0.05	<0.05	<0.05	0.071	<5.0	<0.10
Influent	2/23/01	<0.05	<0.05	<0.05	<0.05	<5.0	<0.10
Mid Air	2/23/01	<0.05	<0.05	<0.05	<0.05	<5.0	<0.10
Effluent	2/23/01	<0.05	<0.05	<0.05	<0.05	<5.0	<0.10
Influent	3/1/01	<0.05	<0.05	<0.05	<0.05	<5.0	<0.10
Mid Air	3/1/01	<0.05	<0.05	<0.05	<0.05	<5.0	<0.10
Effluent	3/1/01	<0.05	<0.05	<0.05	0.055	<5.0	<0.10
Influent	4/5/01	<0.05	<0.05	<0.05	<0.05	<5.0	<0.10
Mid Air	4/5/01	<0.05	<0.05	<0.05	<0.05	<5.0	<0.10
Effluent	4/5/01	<0.05	<0.05	<0.05	<0.05	<5.0	<0.10
Influent	5/21/01	<0.05	<0.05	<0.05	<0.05	<5.0	<0.10
Mid Air	5/21/01	<0.05	<0.05	<0.05	<0.05	<5.0	<0.10
Effluent	5/21/01	<0.05	<0.05	<0.05	<0.05	<5.0	<0.10



**TABLE 3**  
**SVE SYSTEM ANALYTICAL RESULTS**

Beacon Staton No. 3721  
44 Lewelling Boulevard  
San Lorenzo, California

Sample I.D.	Date	Benzene (ppmv)	Toluene (ppmv)	Ethyl-benzene (ppmv)	Total Xylenes (ppmv)	TPH as gasoline (ppmv)	MTBE (ppmv)
Influent	6/21/01	<0.05	<0.05	<0.05	<0.05	5.3	<0.10
Mid Air	6/21/01	<0.05	<0.05	<0.05	<0.05	8.4	<0.10
Effluent	6/21/01	<0.05	<0.05	<0.05	<0.05	<5.0	<0.10
Influent	7/5/01	<0.05	<0.05	<0.05	<0.05	<5.0	<0.10
Mid Air	7/5/01	<0.05	<0.05	<0.05	<0.05	<5.0	<0.10
Effluent	7/5/01	<0.05	<0.05	<0.05	<0.05	<5.0	<0.10
Influent	8/24/01	<0.05	<0.05	<0.05	<0.05	<5.0	<0.10
Mid Air	8/24/01	<0.05	<0.05	<0.05	<0.05	<5.0	<0.10
Effluent	8/24/01	<0.05	<0.05	<0.05	0.066	<5.0	<0.10
Influent	9/6/01	<0.05	<0.05	<0.05	<0.05	<5.0	<0.10
Mid Air	9/6/01	<0.05	<0.05	<0.05	<0.05	<5.0	<0.10
Effluent	9/6/01	<0.05	<0.05	<0.05	<0.05	<5.0	<0.10
Influent	11/23/01	<0.05	<0.05	<0.05	<0.05	<5.0	NA
Mid Air	11/23/01	<0.05	<0.05	<0.05	<0.05	<5.0	NA
Effluent	11/23/01	<0.05	<0.05	<0.05	<0.05	<5.0	NA
Influent	12/13/01	<0.05	<0.05	<0.05	<0.05	<5.0	NA
Mid Air	12/13/01	<0.05	<0.05	<0.05	<0.05	<5.0	NA
Effluent	12/13/01	<0.05	<0.05	<0.05	<0.05	<5.0	NA

MTBE = methyl-t-butyl ether  
TPH = Total Petroleum Hydrocarbons  
ppmv = parts per million by volume  
NA = not analyzed

TABLE 4

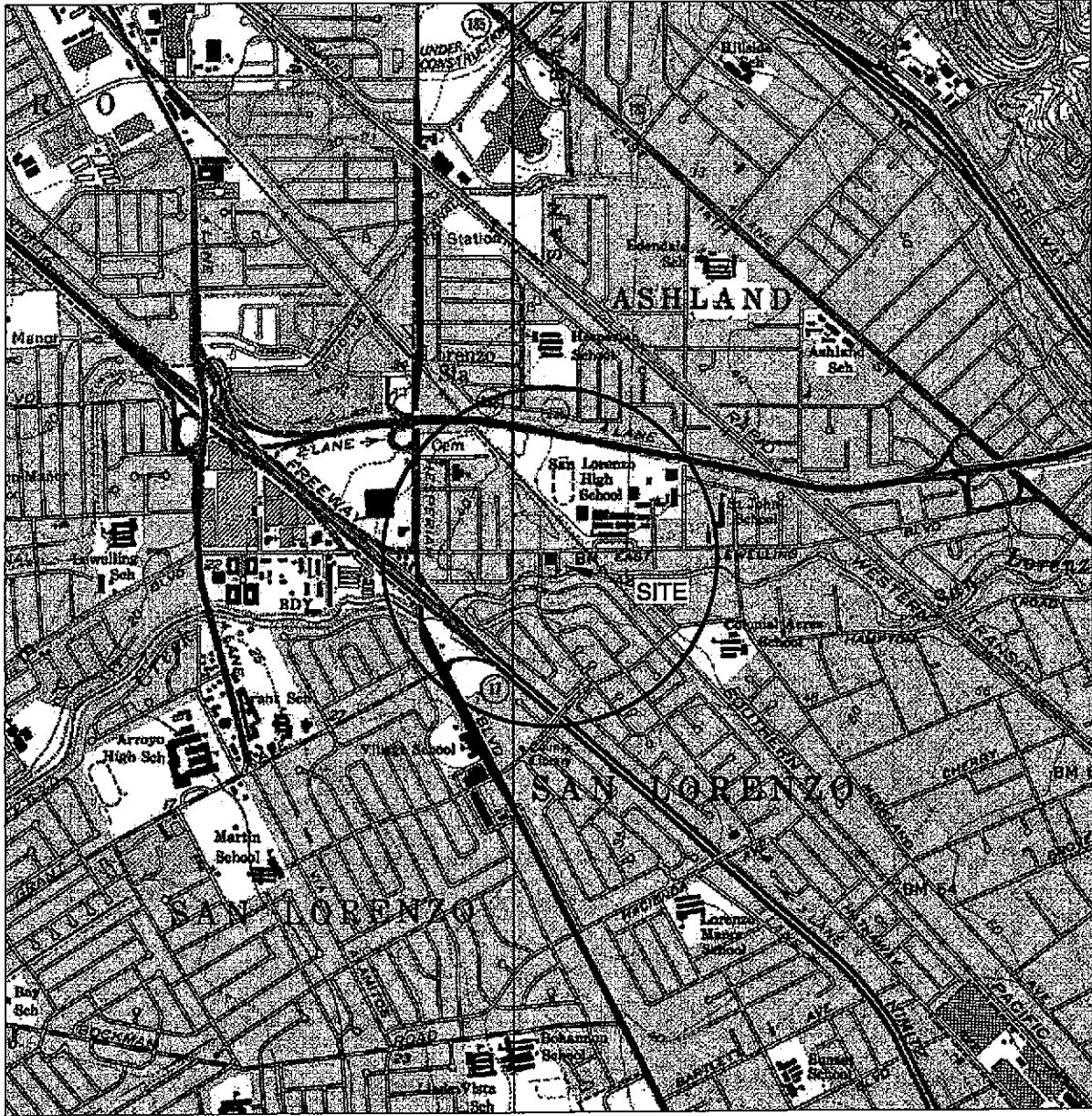
## SVE SYSTEM MONITORING

Beacon Station No. 3721  
44 Lewelling Boulevard  
San Lorenzo, California

Date	Inlet Flow Rate (ft <sup>3</sup> /min)	Stack Flow Rate (ft <sup>3</sup> /min)	SVE TPH Influent (ppmv)	SVE TPH Effluent (ppmv)	SVE Benzene Influent (ppmv)	SVE Benzene Effluent (ppmv)	SVE TPH Extraction Rate (lbs/day)	SVE TPH Mass Emission (lbs/day)	SVE	SVE	Cumulative Volume of Processed Air (cubic feet)	Cumulative TPH Extraction (lbs)	Cumulative TPH Extraction (lbs)	Total Hours Operated	Change in Hours of Operation
									Benzene Extraction Rate (lbs/day)	Benzene Emission Rate (lbs/day)					
04/07/00	105	105	<5.0	<5.0	<0.05	<0.05	<0.18	<0.18	<0.002	<0.002	5.53 E+05	0.7	NA	15,346	88
05/10/00	124	124	<5.0	<5.0	<0.05	<0.05	<0.21	<0.21	<0.002	<0.002	5.88 E+06	6.5	7.2	16,138	792
06/08/00	124	124	<5.0	<5.0	<0.05	<0.05	<0.21	<0.21	<0.002	<0.002	5.17 E+06	3.1	10.3	16,834	696
11/29/00	140	140	<5.0	<5.0	<0.05	<0.05	<0.24	<0.24	<0.002	<0.002	2.34 E+07	14.0	24.3	19,619	2,785
12/07/00	140	140	<5.0	<5.0	<0.05	<0.05	<0.24	<0.24	<0.002	<0.002	1.61 E+06	1.0	25.2	19,811	192
01/19/01	170	170	<5.0	<5.0	<0.05	<0.05	<0.29	<0.29	<0.002	<0.002	1.05 E+07	6.3	31.5	20,841	1,030
02/23/01	130	130	<5.0	<5.0	<0.05	<0.05	<0.22	<0.22	<0.002	<0.002	6.52 E+06	3.9	35.4	21,677	836
03/01/01	209	209	<5.0	<5.0	<0.05	<0.05	<0.36	<0.36	<0.003	<0.003	1.83 E+06	1.1	36.5	21,823	146
04/05/01	205	205	<5.0	<5.0	<0.05	<0.05	<0.35	<0.35	<0.003	<0.003	1.03 E+07	6.2	42.7	22,661	838
05/21/01	220	220	<5.0	<5.0	<0.05	<0.05	<0.38	<0.38	<0.003	<0.003	6.17 E+06	3.7	46.4	23,128	468
06/21/01	240	240	5.3	<5.0	<0.05	<0.05	<0.44	<0.41	<0.003	<0.003	1.06 E+07	6.7	53.1	23,864	735
07/05/01	220	220	<5.0	<5.0	<0.05	<0.05	<0.38	<0.38	<0.003	<0.003	4.38 E+06	2.6	55.7	24,196	332
08/24/01	220	220	<5.0	<5.0	<0.05	<0.05	<0.38	<0.38	<0.003	<0.003	2.16 E+06	1.3	57.0	24,359	163
09/29/01	240	240	<5.0	<5.0	<0.05	<0.05	<0.41	<0.41	<0.003	<0.003	4.42 E+06	2.6	59.7	24,666	307
11/23/01	230	230	<5.0	<5.0	<0.05	<0.05	<0.40	<0.40	<0.003	<0.003	2.58 E+07	15.5	75.1	26,537	1,871
12/13/01	210	210	<5.0	<5.0	<0.05	<0.05	<0.36	<0.36	<0.003	<0.003	6.05 E+06	3.6	78.8	27,017	480

TPH = Total petroleum hydrocarbons.

ppmv = Parts per million by volume.



R.2 W.

GENERAL NOTES:  
 BASE MAP FROM U.S.G.S.  
 HAYWARD, CA.  
 7.5 MINUTE TOPOGRAPHIC  
 PHOTOREVISED 1980



QUADRANGLE LOCATION

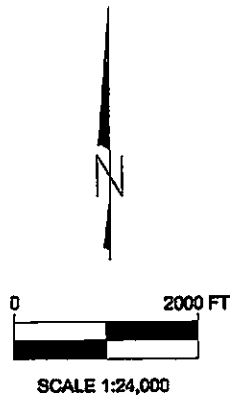


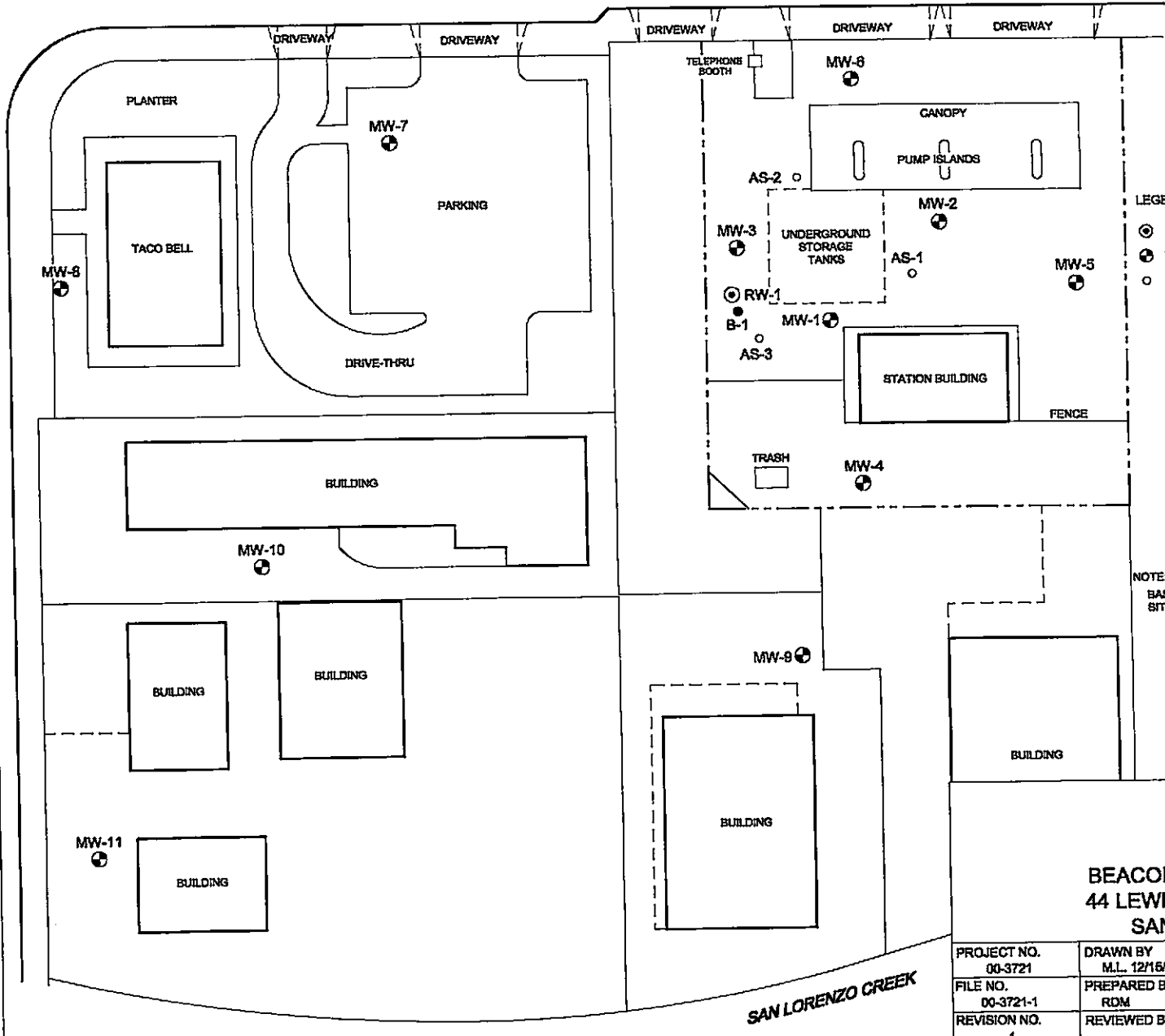
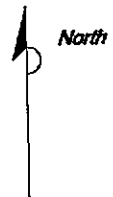
FIGURE 1  
 SITE LOCATION MAP

BEACON STATION NO. 3721  
 44 LEWELLING BOULEVARD  
 SAN LORENZO, CA.

PROJECT NO. 00-3721	DRAWN BY M.L. 12/18/00
FILE NO. 00-3721-1A	PREPARED BY RDM
REVISION NO. 1	REVIEWED BY



LEWELLING BOULEVARD



- LEGEND:
- ⊙ RW-1 RECOVERY WELL LOCATION
  - ⊕ MW-1 MONITORING WELL LOCATION
  - AS-1 AIR SPARGING WELL LOCATION

NOTE:  
 BASE MAP ADAPTED FROM RESNA FIGURE DATED 1/8/82  
 SITE DIMENSIONS AND FACILITY LOCATIONS NOT VERIFIED



FIGURE 2  
 SITE MAP

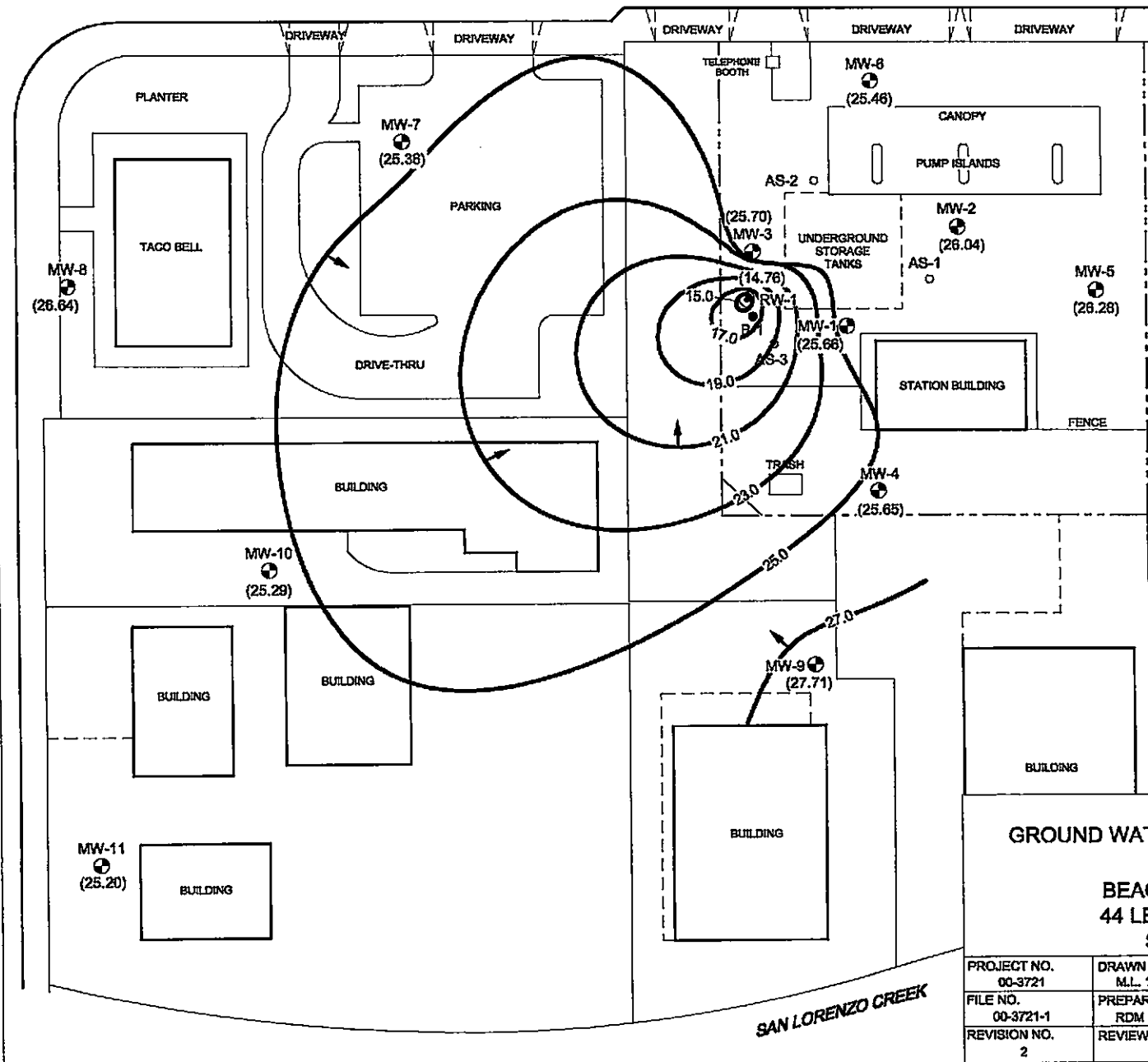
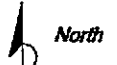
BEACON STATION NO. 3721  
 44 LEWELLING BOULEVARD  
 SAN LORENZO, CA.

PROJECT NO. 00-3721	DRAWN BY M.L. 12/16/00
FILE NO. 00-3721-1	PREPARED BY RDM
REVISION NO. 1	REVIEWED BY



SAN LORENZO CREEK

LEWELLING BOULEVARD



- LEGEND:
- ⊙ RW-1 RECOVERY WELL LOCATION
  - ⊕ MW-1 MONITORING WELL LOCATION
  - AS-1 AIR SPARGING WELL LOCATION
  - (28.62) GROUND WATER ELEVATION ASSUMED RELATIVE TO MEAN SEA LEVEL
  - 27.5 — WATER TABLE CONTOUR ASSUMED RELATIVE TO MEAN SEA LEVEL
  - ← GROUND WATER FLOW DIRECTION

NOTE:  
 BASE MAP ADAPTED FROM RESNA FIGURE DATED 1/8/92  
 SITE DIMENSIONS AND FACILITY LOCATIONS NOT VERIFIED

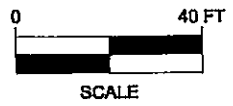


FIGURE 3  
 GROUND WATER ELEVATION CONTOUR MAP  
 11/7/01

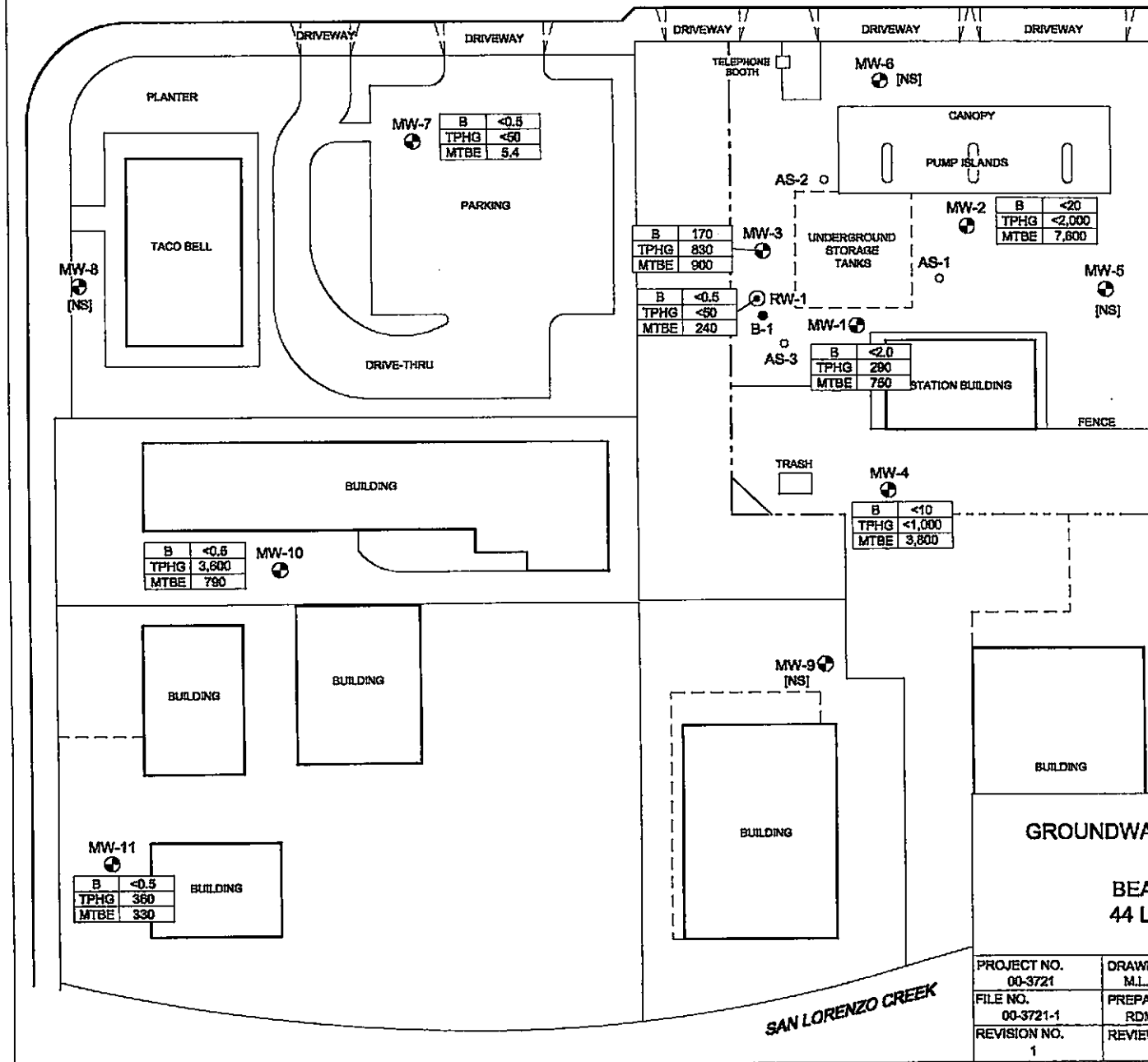
BEACON STATION NO. 3721  
 44 LEWELLING BOULEVARD  
 SAN LORENZO, CA.

PROJECT NO. 00-3721	DRAWN BY M.L. 1/18/02
FILE NO. 00-3721-1	PREPARED BY RDM
REVISION NO. 2	REVIEWED BY



SAN LORENZO CREEK

LEWELLING BOULEVARD



LEGEND:

- ⊕ RW-1 RECOVERY WELL LOCATION
- ⊙ MW-1 MONITORING WELL LOCATION
- AS-1 AIR SPARGING WELL LOCATION

B	<0.5	BENZENE CONCENTRATION IN MICROGRAMS PER LITER (ug/L)
TPHG	<50	TOTAL PETROLEUM HYDROCARBONS AS GASOLINE IN ug/L
MTBE	<5.0	METHYL TERTIARY BUTYL ETHER IN ug/L
NS		NOT SAMPLED

NOTE:  
BASE MAP ADAPTED FROM RESNA FIGURE DATED 1/8/02  
SITE DIMENSIONS AND FACILITY LOCATIONS NOT VERIFIED

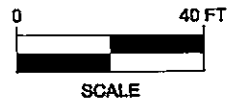


FIGURE 4  
GROUNDWATER ANALYTICAL SUMMARY  
11/7/01

BEACON STATION NO. 3721  
44 LEWELLING BOULEVARD  
SAN LORENZO, CA.

PROJECT NO. 00-3721	DRAWN BY M.L. 1/10/02
FILE NO. 00-3721-1	PREPARED BY RDM
REVISION NO. 1	REVIEWED BY





## HISTORICAL BACKGROUND INFORMATION

Beacon Station No. 3721  
44 Lewelling Boulevard  
San Lorenzo, California

### PRE - ULTRAMAR INC.

- April 1987 - Three underground gasoline storage tanks were excavated and removed. Samples collected from beneath the former tanks indicated that hydrocarbons were present in the soil.
- May 1987 - Conoco installed three monitoring wells (MW-1 through MW-3). Hydrocarbons were detected in soil and ground-water samples collected from the wells. The site has been on a monitoring program since May 1987.
- December 1988 - Four additional wells (MW-4 through MW-7) were installed. Dissolved-phase hydrocarbons were detected in the new wells.
- September 1989 - Two additional wells (MW-8 and MW-9) were installed.

### ULTRAMAR INC.

- July 1990 - Ultramar Inc purchased the site from Conoco. The monitoring program has continued
- March 14, 1991 - Work Plan for additional assessment submitted.
- October 1991 - Drilled two additional offsite wells (MW-10 and MW-11) southwest of the site and one onsite recovery well (RW-1).
- November 1991 - Performed ground-water pump test and vapor extraction test.
- April 1992 - Ultramar submitted an Interim Remediation Plan.
- June 1992 - Interim Remediation Plan was approved.
- March 1993 - Installed the subsurface piping for the remediation system.
- April 1993 - Completed installation of ground-water remediation system.
- June 1993 - Began operation.
- April 1993 - The ground-water extraction system began operation.
- March 1994 - The vapor extraction system began operation.
- June 8, 1994 - Obtained the Permit to Operate for the vapor extraction system.
- December 1995 - Installed an air sparging system.
- January 1997 - Discontinued to operate the remediation system. Approximately 1,184,392 gallons of ground water have been removed, treated, and discharged. Approximately 103 gallons of hydrocarbons have been removed the vapor extraction system.

**CONTINUED NEXT PAGE**



## HISTORICAL BACKGROUND INFORMATION

Beacon Station No. 3721  
44 Lewelling Boulevard  
San Lorenzo, California

### ULTRAMAR INC. (continued)

- October 1997 - Drilled confirmation borings. Results indicate soil clean.
- June 1998 - The air sparging system was restarted.
- July 1999 - The ground water system was restarted.
- April 3, 2000 – The soil vapor extraction system was restarted.
- During early July 2001, the station piping, dispensers, and tank top were upgraded. Details of the line sampling and over-excavation activities are included in the Doulos report entitled *Product Line and Excavation Sampling Results Report*, dated October 1, 2001.

**ENCLOSURE B**

Ground Water Sampling Information

DOULOS ENVIRONMENTAL, INC.  
GROUNDWATER/LIQUID LEVEL DATA  
(measurements in feet)

Project Address: Beacon # 3721 44 Leweling Blvd.  
San Lorenzo, Ca.

Date: 11-7-01

Project No.: 3721-67

Recorded by: \_\_\_\_\_

Well No.	Time	Well Elev. TOC	Depth to Groundwater	Measured Total Depth	Groundwater Elevation	Depth to Product	Product Thickness	Comments
MW-1	2:03		18.01	33.64				
MW-2	2:14		17.05	34.35				
MW-3	1:59		17.40	34.23				
MW-4	2:10		19.01	24.45				
MW-5	2:17		17.51	29.31				
MW-6	1:56		17.01	28.43				
MW-7	1:50		16.18	24.17				
MW-8	1:40		15.62	22.99				
MW-9	1:54		17.23	23.57				
MW-10	1:36		17.05	29.40				
MW-11	1:34		19.80	29.34				
RW-1	1:30		28.41	34.11				PUMPING

Notes:

Client: Ultramar  
 Site: Beacon #3721  
44 Lewelling Blvd.  
San Lorenzo,

Sampling Date: 11-7-01  
 Project No.: \_\_\_\_\_  
 Well Designation: MW-1

Is setup of traffic control devices required?  NO  YES time: \_\_\_\_\_ hours  
 Is there standing water in the well box?  NO  YES Above TOC \_\_\_\_\_ Below TOC \_\_\_\_\_  
 Is top of casing cut level?  NO  YES If no, see remarks \_\_\_\_\_  
 Is well cap sealed and locked?  NO  YES If no, see remarks \_\_\_\_\_  
 Height of well casing riser (in inches): 10  
 Well cover type: 8" or 12" UV \_\_\_\_\_ 12" EMCO \_\_\_\_\_ 8" or 12" BK \_\_\_\_\_ 8" Christy \_\_\_\_\_  
 12" Christy \_\_\_\_\_ 8" M&D \_\_\_\_\_ 12" M&D \_\_\_\_\_ 12" DWP \_\_\_\_\_  
 12" CNI  36" CNI \_\_\_\_\_ 12" Pomeco \_\_\_\_\_ Other: \_\_\_\_\_  
 General condition of wellhead assembly: Excellent \_\_\_\_\_ Good  Fair \_\_\_\_\_ Poor \_\_\_\_\_

Purging Equipment: \_\_\_\_\_ 2" disposable bailer \_\_\_\_\_ Submersible pump  
 \_\_\_\_\_ 2" PVC bailer \_\_\_\_\_ Dedicated bailer  
 \_\_\_\_\_ 4" PVC bailer \_\_\_\_\_ Centrifugal pump  
 Sampled with: Disposable bailer  Teflon bailer \_\_\_\_\_ Disposable Tubing \_\_\_\_\_

Well Diameter: 2"  4" \_\_\_\_\_ 6" \_\_\_\_\_ 8" \_\_\_\_\_  
 Purge Vol. Multiplier: 0.16 \_\_\_\_\_ 0.65 \_\_\_\_\_ 1.47 \_\_\_\_\_ 2.61 gal/ft.

Initial Measurement Recharge Measurement  
 Time: 2:03 Time: 4:23 Calculated purge: 10.0  
 Depth of well: 33.64 Depth to water: 20.30 Actual purge: 10.0  
 Depth to water: 18.01

Start purge: 4:15 Sampling time: 4:25

Time	Temperature	E.C.	pH	Turbidity	Volume
4:16	64.1	881	7.60		1
4:17	65.0	870	7.53		2
4:17	65.3	810	7.50		3
4:18	66.0	803	7.41		4

Sample appearance: Clean Lock: 3753

Equipment replaced: (check all that apply) Note condition of replaced item(s)  
 2" Locking Cap: \_\_\_\_\_ Lock: \_\_\_\_\_ 7/32 Allenhead: \_\_\_\_\_  
 4" Locking Cap: \_\_\_\_\_ Lock-Dolphin: \_\_\_\_\_ 9/16 Bolt: \_\_\_\_\_  
 6" Locking Cap: \_\_\_\_\_ Pinned Allenhead (DWP): \_\_\_\_\_

Remarks: \_\_\_\_\_

Signature: \_\_\_\_\_

Client: Ultramar
Site: Beacon #3721
44 Lewelling Blvd.
San Lorenzo,

Sampling Date: 11-7-01
Project No.:
Well Designation: MU-9

Is setup of traffic control devices required?
Is there standing water in the well box?
Is top of casing cut level?
Is well cap sealed and locked?

NO YES
NO YES
NO YES
NO YES

time: hours
Above TOC Below TOC
If no, see remarks
If no, see remarks

Height of well casing riser (in inches): 4
Well cover type: 8" or 12" UV 12" EMCO 8" or 12" BK 8" Christy
12" Christy 8" M&D 12" M&D 12" DWP
12" CNI 36" CNI 12" Pomeco Other:
General condition of wellhead assembly: Excellent Good X Fair Poor

Purging Equipment: 2" disposable bailer Submersible pump
2" PVC bailer Dedicated bailer
4" PVC bailer Centrifugal pump X
Sampled with: Disposable bailer X Teflon bailer Disposable Tubing

Well Diameter: 2" X 4" 6" 8"
Purge Vol. Multiplier: 0.16 0.65 1.47 2.61 gal/ft.

Initial Measurement Recharge Measurement
Time: 2:14 Time: 4:41 Calculated purge: 11.0
Depth of well: 34.35 Depth to water: 18.90 Actual purge: 11.0
Depth to water: 17.05

Start purge: 4:30 Sampling time: 4:42

Table with 6 columns: Time, Temperature, E.C., pH, Turbidity, Volume. Rows contain data for times 4:31, 4:32, 4:33, 4:34.

Sample appearance: clear Lock: 3753

Equipment replaced: (check all that apply) Note condition of replaced item(s)
2" Locking Cap: Lock: 7/32 Allenhead:
4" Locking Cap: Lock-Dolphin: 9/16 Bolt:
6" Locking Cap: Pinned Allenhead (DWP):

Remarks:

Signature:

Client: Ultramar

Sampling Date: 11-7-01

Site: Beacon #3721

Project No.: \_\_\_\_\_

44 Lewelling Blvd.

Well Designation: MU-3

San Lorenzo,

Is setup of traffic control devices required?  NO  YES

Is there standing water in the well box?  NO  YES

Is top of casing cut level?  NO  YES

Is well cap sealed and locked?  NO  YES

Height of well casing riser (in inches): 10

time: \_\_\_\_\_ hours

Above TOC \_\_\_\_\_ Below TOC \_\_\_\_\_

If no, see remarks

If no, see remarks

Well cover type: 8" or 12" UV \_\_\_\_\_ 12" EMCO \_\_\_\_\_ 8" or 12" BK \_\_\_\_\_ 8" Christy \_\_\_\_\_

12" Christy \_\_\_\_\_ 8" M&D \_\_\_\_\_ 12" M&D \_\_\_\_\_ 12" DWP \_\_\_\_\_

12" CNI  36" CNI \_\_\_\_\_ 12" Pomeco \_\_\_\_\_ Other: \_\_\_\_\_

General condition of wellhead assembly: Excellent \_\_\_\_\_ Good  Fair \_\_\_\_\_ Poor \_\_\_\_\_

Purging Equipment: \_\_\_\_\_ 2" disposable bailer \_\_\_\_\_ Submersible pump

\_\_\_\_\_ 2" PVC bailer \_\_\_\_\_ Dedicated bailer

\_\_\_\_\_ 4" PVC bailer  Centrifugal pump

Sampled with: Disposable bailer  Teflon bailer \_\_\_\_\_ Disposable Tubing \_\_\_\_\_

Well Diameter: 2"  4" \_\_\_\_\_ 6" \_\_\_\_\_ 8" \_\_\_\_\_

Purge Vol. Multiplier: 0.16 \_\_\_\_\_ 0.65 \_\_\_\_\_ 1.47 \_\_\_\_\_ 2.61 gal/ft.

Initial Measurement

Recharge Measurement

Time: 1:59

Time: 3:45

Calculated purge: 10.7

Depth of well: 34.23

Depth to water: 18.91

Actual purge: 10.7

Depth to water: 17.40

Start purge: 3:30

Sampling time: 3:46

Time	Temperature	E.C.	pH	Turbidity	Volume
3:31	65.8	998	7.41		1
3:32	66.1	991	7.36		2
3:33	67.8	982	7.31		3
3:33	67.1	970	7.30		4

Sample appearance: clear

Lock: 3783

Equipment replaced: (check all that apply)

Note condition of replaced item(s)

2" Locking Cap: \_\_\_\_\_

Lock: \_\_\_\_\_ 7/32 Allenhead: \_\_\_\_\_

4" Locking Cap: \_\_\_\_\_

Lock-Dolphin: \_\_\_\_\_ 9/16 Bolt: \_\_\_\_\_

6" Locking Cap: \_\_\_\_\_

Pinned Allenhead (DWP): \_\_\_\_\_

Remarks: \_\_\_\_\_

Signature: \_\_\_\_\_

Client: Ultramar

Sampling Date: 11-7-01

Site: Beacon #3721

Project No.:

44 Lewelling Blvd.

Well Designation: MW-4

San Lorenzo,

Is setup of traffic control devices required?

NO YES

time: \_\_\_\_\_ hours

Is there standing water in the well box?

NO YES

Above TOC Below TOC

Is top of casing cut level?

NO YES

If no, see remarks

Is well cap sealed and locked?

NO YES

If no, see remarks

Height of well casing riser (in inches): 9

Well cover type: 8" or 12" UV 12" EMCO 8" or 12" BK X 8" Christy

12" Christy 8" M&D 12" M&D 12" DWP

12" CNI 36" CNI 12" Pomeco Other:

General condition of wellhead assembly: Excellent Good X Fair Poor

Purging Equipment: 2" disposable bailer Submersible pump

2" PVC bailer Dedicated bailer

4" PVC bailer X Centrifugal pump

Sampled with: Disposable bailer X Teflon bailer Disposable Tubing

Well Diameter: 2" X 4" 6" 8"

Purge Vol. Multiplier: 0.16 0.65 1.47 2.61 gal/ft.

Initial Measurement

Recharge Measurement

Time: 2:10

Time: 4:10

Calculated purge: 3.4

Depth of well: 24.45

Depth to water: 21.10

Actual purge: 3.4

Depth to water: 19.01

Start purge: 3:54

Sampling time: 4:11

Time	Temperature	E.C.	pH	Turbidity	Volume
3:55	64.8	816	7.33		1
3:56	65.0	810	7.30		2
3:56	65.1	798	7.25		3
3:57	65.6	791	7.26		4

Sample appearance: clean

Lock: [Signature]

Equipment replaced: (check all that apply)

Note condition of replaced item(s)

2" Locking Cap: \_\_\_\_\_

Lock: \_\_\_\_\_ 7/32 Allenhead: \_\_\_\_\_

4" Locking Cap: \_\_\_\_\_

Lock-Dolphin: \_\_\_\_\_ 9/16 Bolt: \_\_\_\_\_

6" Locking Cap: \_\_\_\_\_

Pinned Allenhead (DWP): \_\_\_\_\_

Remarks: \_\_\_\_\_

Signature: \_\_\_\_\_

Client: Ultramar  
 Site: Beacon #3721  
44 Lewelling Blvd.  
San Lorenzo,

Sampling Date: 11-7-01  
 Project No.: \_\_\_\_\_  
 Well Designation: MU-7

Is setup of traffic control devices required?  NO  YES  
 Is there standing water in the well box?  NO  YES  
 Is top of casing cut level?  NO  YES  
 Is well cap sealed and locked?  NO  YES  
 Height of well casing riser (in inches): 3  
 Well cover type: 8" or 12" UV \_\_\_\_\_ 12" EMCO \_\_\_\_\_ 8" or 12" BK \_\_\_\_\_ 8" Christy \_\_\_\_\_  
 12" Christy \_\_\_\_\_ 8" M&D \_\_\_\_\_ 12" M&D \_\_\_\_\_ 12" DWP   
 12" CNI \_\_\_\_\_ 36" CNI \_\_\_\_\_ 12" Pomeco \_\_\_\_\_ Other: \_\_\_\_\_  
 General condition of wellhead assembly: Excellent \_\_\_\_\_ Good  Fair \_\_\_\_\_ Poor \_\_\_\_\_

Purging Equipment: \_\_\_\_\_ 2" disposable bailer \_\_\_\_\_ Submersible pump  
 \_\_\_\_\_ 2" PVC bailer \_\_\_\_\_ Dedicated bailer  
 \_\_\_\_\_ 4" PVC bailer  Centrifugal pump  
 Sampled with: Disposable bailer  Teflon bailer \_\_\_\_\_ Disposable Tubing \_\_\_\_\_

Well Diameter: 2"  4" \_\_\_\_\_ 6" \_\_\_\_\_ 8" \_\_\_\_\_  
 Purge Vol. Multiplier: 0.16 \_\_\_\_\_ 0.65 \_\_\_\_\_ 1.47 \_\_\_\_\_ 2.61 gal/ft.  
Initial Measurement Recharge Measurement  
 Time: 1:50 Time: 3:22 Calculated purge: 5.1  
 Depth of well: 24.17 Depth to water: 17.91 Actual purge: 5.1  
 Depth to water: 16.18

Start purge: 3:11 Sampling time: 3:23

Time	Temperature	E.C.	pH	Turbidity	Volume
3:11	65.1	610	7.16		1
3:12	66.0	598	7.10		2
3:13	66.7	596	7.09		3
3:14	66.8	590	7.08		4

Sample appearance: clear Lock: Dolphin

Equipment replaced: (check all that apply) Note condition of replaced item(s)  
 2" Locking Cap: \_\_\_\_\_ Lock: \_\_\_\_\_ 7/32 Allenhead: \_\_\_\_\_  
 4" Locking Cap: \_\_\_\_\_ Lock-Dolphin: \_\_\_\_\_ 9/16 Bolt: \_\_\_\_\_  
 6" Locking Cap: \_\_\_\_\_ Pinned Allenhead (DWP): \_\_\_\_\_

Remarks: \_\_\_\_\_  
 \_\_\_\_\_

Signature: \_\_\_\_\_



Client: Ultramar  
 Site: Beacon #3721  
44 Lewelling Blvd.  
San Lorenzo,

Sampling Date: 11-7-01  
 Project No.: \_\_\_\_\_  
 Well Designation: MW-10

Is setup of traffic control devices required?  NO YES  
 Is there standing water in the well box?  NO YES  
 Is top of casing cut level?  NO  YES  
 Is well cap sealed and locked?  NO  YES  
 Height of well casing riser (in inches): 10  
 Well cover type: 8" or 12" UV \_\_\_\_\_ 12" EMCO \_\_\_\_\_ 8" or 12" BK  8" Christy \_\_\_\_\_  
 12" Christy \_\_\_\_\_ 8" M&D \_\_\_\_\_ 12" M&D \_\_\_\_\_ 12" DWP \_\_\_\_\_  
 12" CNI \_\_\_\_\_ 36" CNI \_\_\_\_\_ 12" Pomeco \_\_\_\_\_ Other: \_\_\_\_\_  
 General condition of wellhead assembly: Excellent \_\_\_\_\_ Good  Fair \_\_\_\_\_ Poor \_\_\_\_\_

Purging Equipment: \_\_\_\_\_ 2" disposable bailer \_\_\_\_\_ Submersible pump  
 \_\_\_\_\_ 2" PVC bailer \_\_\_\_\_ Dedicated bailer  
 \_\_\_\_\_ 4" PVC bailer  Centrifugal pump  
 Sampled with: Disposable bailer  Teflon bailer \_\_\_\_\_ Disposable Tubing \_\_\_\_\_

Well Diameter: 2"  4" \_\_\_\_\_ 6" \_\_\_\_\_ 8" \_\_\_\_\_  
 Purge Vol. Multiplier: 0.16 \_\_\_\_\_ 0.65 \_\_\_\_\_ 1.47 \_\_\_\_\_ 2.61 gal/ft.  
Initial Measurement Recharge Measurement  
 Time: 1:36 Time: 3:00 Calculated purge: 7.9  
 Depth of well: 29.40 Depth to water: 18.90 Actual purge: 7.9  
 Depth to water: 17.05

Start purge: 2:40 Sampling time: 3:01

Time	Temperature	E.C.	pH	Turbidity	Volume
2:41	65.3	1119	7.50		1
2:42	65.6	1117	7.41		2
2:43	66.1	1116	7.33		3
2:45	66.7	1101	7.30		4

Sample appearance: Clean Lock: Dolphin

Equipment replaced: (check all that apply) Note condition of replaced item(s)  
 2" Locking Cap: \_\_\_\_\_ Lock: \_\_\_\_\_ 7/32 Allenhead: \_\_\_\_\_  
 4" Locking Cap: \_\_\_\_\_ Lock-Dolphin: \_\_\_\_\_ 9/16 Bolt: \_\_\_\_\_  
 6" Locking Cap: \_\_\_\_\_ Pinned Allenhead (DWP): \_\_\_\_\_

Remarks: \_\_\_\_\_  
 \_\_\_\_\_

Signature: \_\_\_\_\_

Client: Ultramar  
 Site: Beacon #3721  
44 Lewelling Blvd.  
San Lorenzo,

Sampling Date: 11-7-01  
 Project No.: \_\_\_\_\_  
 Well Designation: MW-11

Is setup of traffic control devices required?  NO  YES time: \_\_\_\_\_ hours  
 Is there standing water in the well box?  NO  YES Above TOC Below TOC  
 Is top of casing cut level?  NO  YES If no, see remarks  
 Is well cap sealed and locked?  NO  YES If no, see remarks  
 Height of well casing riser (in inches): 10  
 Well cover type: 8" or 12" UV \_\_\_\_\_ 12" EMCO \_\_\_\_\_ 8" or 12" BK  8" Christy \_\_\_\_\_  
 12" Christy \_\_\_\_\_ 8" M&D \_\_\_\_\_ 12" M&D \_\_\_\_\_ 12" DWP \_\_\_\_\_  
 12" CNI \_\_\_\_\_ 36" CNI \_\_\_\_\_ 12" Pomeco \_\_\_\_\_ Other: \_\_\_\_\_  
 General condition of wellhead assembly: Excellent \_\_\_\_\_ Good  Fair \_\_\_\_\_ Poor \_\_\_\_\_

Purging Equipment: \_\_\_\_\_ 2" disposable bailer \_\_\_\_\_ Submersible pump  
 \_\_\_\_\_ 2" PVC bailer \_\_\_\_\_ Dedicated bailer  
 \_\_\_\_\_ 4" PVC bailer \_\_\_\_\_ Centrifugal pump  
 Sampled with: Disposable bailer  Teflon bailer \_\_\_\_\_ Disposable Tubing \_\_\_\_\_

Well Diameter: 2"  4" \_\_\_\_\_ 6" \_\_\_\_\_ 8" \_\_\_\_\_  
 Purge Vol. Multiplier: 0.16 0.65 1.47 2.61 gal/ft.

Initial Measurement Recharge Measurement  
 Time: 1:34 Time: 2:33 Calculated purge: 6.1  
 Depth of well: 29.34 Depth to water: 20.80 Actual purge: 6.1  
 Depth to water: 19.80

Start purge: 2:25 Sampling time: 2:35

Time	Temperature	E.C.	pH	Turbidity	Volume
2:26	66.3	817	7.33		1
2:27	65.8	810	7.27		2
2:28	65.9	751	7.27		3
2:29	65.3	746	7.28		4

Sample appearance: Clear Lock: [Signature]

Equipment replaced: (check all that apply) Note condition of replaced item(s)  
 2" Locking Cap: \_\_\_\_\_ Lock: \_\_\_\_\_ 7/32 Allenhead: \_\_\_\_\_  
 4" Locking Cap: \_\_\_\_\_ Lock-Dolphin: \_\_\_\_\_ 9/16 Bolt: \_\_\_\_\_  
 6" Locking Cap: \_\_\_\_\_ Pinned Allenhead (DWP): \_\_\_\_\_

Remarks: \_\_\_\_\_

Signature: \_\_\_\_\_

Client: Ultramar  
 Site: Beacon #3721  
44 Lewelling Blvd.  
San Lorenzo,

Sampling Date: 11-7-01  
 Project No.: \_\_\_\_\_  
 Well Designation: RW-1

Is setup of traffic control devices required?  NO YES  
 Is there standing water in the well box?  NO YES  
 Is top of casing cut level? NO  YES  
 Is well cap sealed and locked? NO  YES  
 Height of well casing riser (in inches): 10  
 Well cover type: 8" or 12" UV \_\_\_\_\_ 12" EMCO \_\_\_\_\_ 8" or 12" BK \_\_\_\_\_ 8" Christy \_\_\_\_\_  
 12" Christy \_\_\_\_\_ 8" M&D \_\_\_\_\_ 12" M&D \_\_\_\_\_ 12" DWP \_\_\_\_\_  
 12" CNI \_\_\_\_\_ 36" CNI  12" Pomeco \_\_\_\_\_ Other: \_\_\_\_\_  
 General condition of wellhead assembly: Excellent \_\_\_\_\_ Good \_\_\_\_\_ Fair \_\_\_\_\_ Poor \_\_\_\_\_

Purging Equipment: \_\_\_\_\_ 2" disposable bailer \_\_\_\_\_  Submersible pump  
 \_\_\_\_\_ 2" PVC bailer \_\_\_\_\_ Dedicated bailer  
 \_\_\_\_\_ 4" PVC bailer \_\_\_\_\_ Centrifugal pump  
 Sampled with: Disposable bailer  SP Teflon bailer \_\_\_\_\_ Disposable Tubing \_\_\_\_\_

Well Diameter: 2" \_\_\_\_\_ 4" \_\_\_\_\_ 6"  8" \_\_\_\_\_  
 Purge Vol. Multiplier: 0.16 \_\_\_\_\_ 0.65 \_\_\_\_\_ 1.47 \_\_\_\_\_ 2.61 gal/ft.

Initial Measurement Time: 1:30 Recharge Measurement Time: NA Calculated purge: \_\_\_\_\_  
 Depth of well: 34.11 Depth to water: NA Actual purge: NA  
 Depth to water: 28.41

Start purge: NA Sampling time: 3:50

Time	Temperature	E.C.	pH	Turbidity	Volume

Sample appearance: Clear Lock: NA

Equipment replaced: (check all that apply) Note condition of replaced item(s)  
 2" Locking Cap: \_\_\_\_\_ Lock: \_\_\_\_\_ 7/32 Allenhead: \_\_\_\_\_  
 4" Locking Cap: \_\_\_\_\_ Lock-Dolphin: \_\_\_\_\_ 9/16 Bolt: \_\_\_\_\_  
 6" Locking Cap: \_\_\_\_\_ Pinned Allenhead (DWP): \_\_\_\_\_

Remarks: \_\_\_\_\_  
 \_\_\_\_\_

Signature: \_\_\_\_\_

**ENCLOSURE C**

Ground Water Monitoring  
Analytical Results



Report Number : 23325

Date : 11/20/2001

Richard Munsch  
Doulos Environmental  
1704 Via Riata  
Roseville, CA 95747

Subject : 8 Water Samples  
Project Name : SAN LORENZO 3721  
Project Number :  
P.O. Number : 3721-67

Dear Mr. Munsch,

Chemical analysis of the samples referenced above has been completed. Summaries of the data are contained on the following pages. Sample(s) were received under documented chain-of-custody. US EPA protocols for sample storage and preservation were followed.

Kiff Analytical is certified by the State of California (# 2236). If you have any questions regarding procedures or results, please call me at 530-297-4800.

Sincerely,

A handwritten signature in black ink that reads "Joel Kiff". The signature is written in a cursive style with a large initial "J".

Joel Kiff



Report Number : 23325

Date : 11/20/2001

Project Name : SAN LORENZO 3721

Project Number :

Sample : MW-1

Matrix : Water

Lab Number : 23325-01

Sample Date :11/7/2001

Parameter	Measured Value	Method Reporting Limit	Units	Analysis Method	Date Analyzed
Benzene	< 2.0	2.0	ug/L	EPA 8260B	11/15/2001
Toluene	< 2.0	2.0	ug/L	EPA 8260B	11/15/2001
Ethylbenzene	< 2.0	2.0	ug/L	EPA 8260B	11/15/2001
Total Xylenes	< 2.0	2.0	ug/L	EPA 8260B	11/15/2001
Methyl-t-butyl ether (MTBE)	750	2.0	ug/L	EPA 8260B	11/15/2001
TPH as Gasoline	290	200	ug/L	EPA 8260B	11/15/2001
Toluene - d8 (Surr)	100		% Recovery	EPA 8260B	11/15/2001
4-Bromofluorobenzene (Surr)	94.7		% Recovery	EPA 8260B	11/15/2001

Sample : MW-2

Matrix : Water

Lab Number : 23325-02

Sample Date :11/7/2001

Parameter	Measured Value	Method Reporting Limit	Units	Analysis Method	Date Analyzed
Benzene	< 20	20	ug/L	EPA 8260B	11/15/2001
Toluene	< 20	20	ug/L	EPA 8260B	11/15/2001
Ethylbenzene	< 20	20	ug/L	EPA 8260B	11/15/2001
Total Xylenes	< 20	20	ug/L	EPA 8260B	11/15/2001
Methyl-t-butyl ether (MTBE)	7600	20	ug/L	EPA 8260B	11/15/2001
TPH as Gasoline	< 2000	2000	ug/L	EPA 8260B	11/15/2001
Toluene - d8 (Surr)	102		% Recovery	EPA 8260B	11/15/2001
4-Bromofluorobenzene (Surr)	114		% Recovery	EPA 8260B	11/15/2001

Approved By:  Joel Kiff



Report Number : 23325

Date : 11/20/2001

Project Name : SAN LORENZO 3721

Project Number :

Sample : MW-3

Matrix : Water

Lab Number : 23325-03

Sample Date : 11/7/2001

Parameter	Measured Value	Method Reporting Limit	Units	Analysis Method	Date Analyzed
Benzene	170	2.0	ug/L	EPA 8260B	11/15/2001
Toluene	2.3	2.0	ug/L	EPA 8260B	11/15/2001
Ethylbenzene	4.9	2.0	ug/L	EPA 8260B	11/15/2001
Total Xylenes	4.8	2.0	ug/L	EPA 8260B	11/15/2001
Methyl-t-butyl ether (MTBE)	900	2.0	ug/L	EPA 8260B	11/15/2001
TPH as Gasoline	830	200	ug/L	EPA 8260B	11/15/2001
Toluene - d8 (Surr)	100		% Recovery	EPA 8260B	11/15/2001
4-Bromofluorobenzene (Surr)	95.7		% Recovery	EPA 8260B	11/15/2001

Sample : MW-4

Matrix : Water

Lab Number : 23325-04

Sample Date : 11/7/2001

Parameter	Measured Value	Method Reporting Limit	Units	Analysis Method	Date Analyzed
Benzene	< 10	10	ug/L	EPA 8260B	11/15/2001
Toluene	< 10	10	ug/L	EPA 8260B	11/15/2001
Ethylbenzene	< 10	10	ug/L	EPA 8260B	11/15/2001
Total Xylenes	< 10	10	ug/L	EPA 8260B	11/15/2001
Methyl-t-butyl ether (MTBE)	3800	10	ug/L	EPA 8260B	11/15/2001
TPH as Gasoline	< 1000	1000	ug/L	EPA 8260B	11/15/2001
Toluene - d8 (Surr)	102		% Recovery	EPA 8260B	11/15/2001
4-Bromofluorobenzene (Surr)	114		% Recovery	EPA 8260B	11/15/2001

Approved By:  Joel Kiff



Report Number : 23325

Date : 11/20/2001

Project Name : **SAN LORENZO 3721**

Project Number :

Sample : **MW-7**

Matrix : Water

Lab Number : 23325-05

Sample Date :11/7/2001

Parameter	Measured Value	Method Reporting Limit	Units	Analysis Method	Date Analyzed
<b>Benzene</b>	<b>&lt; 0.50</b>	0.50	ug/L	EPA 8260B	11/15/2001
<b>Toluene</b>	<b>&lt; 0.50</b>	0.50	ug/L	EPA 8260B	11/15/2001
<b>Ethylbenzene</b>	<b>&lt; 0.50</b>	0.50	ug/L	EPA 8260B	11/15/2001
<b>Total Xylenes</b>	<b>&lt; 0.50</b>	0.50	ug/L	EPA 8260B	11/15/2001
<b>Methyl-t-butyl ether (MTBE)</b>	<b>5.4</b>	0.50	ug/L	EPA 8260B	11/15/2001
<b>TPH as Gasoline</b>	<b>&lt; 50</b>	50	ug/L	EPA 8260B	11/15/2001
Toluene - d8 (Surr)	99.8		% Recovery	EPA 8260B	11/15/2001
4-Bromofluorobenzene (Surr)	94.0		% Recovery	EPA 8260B	11/15/2001

Sample : **MW-10**

Matrix : Water

Lab Number : 23325-06

Sample Date :11/7/2001

Parameter	Measured Value	Method Reporting Limit	Units	Analysis Method	Date Analyzed
<b>Benzene</b>	<b>&lt; 0.50</b>	0.50	ug/L	EPA 8260B	11/15/2001
<b>Toluene</b>	<b>0.64</b>	0.50	ug/L	EPA 8260B	11/15/2001
<b>Ethylbenzene</b>	<b>0.75</b>	0.50	ug/L	EPA 8260B	11/15/2001
<b>Total Xylenes</b>	<b>2.7</b>	0.50	ug/L	EPA 8260B	11/15/2001
<b>Methyl-t-butyl ether (MTBE)</b>	<b>790</b>	2.0	ug/L	EPA 8260B	11/17/2001
<b>TPH as Gasoline</b>	<b>3600</b>	50	ug/L	EPA 8260B	11/15/2001
Toluene - d8 (Surr)	102		% Recovery	EPA 8260B	11/15/2001
4-Bromofluorobenzene (Surr)	93.7		% Recovery	EPA 8260B	11/15/2001

Approved By:  Joel Kiff





Report Number : 23325

Date : 11/20/2001

Project Name : **SAN LORENZO 3721**

Project Number :

Sample : **MW-11**

Matrix : Water

Lab Number : 23325-07

Sample Date :11/7/2001

Parameter	Measured Value	Method Reporting Limit	Units	Analysis Method	Date Analyzed
<b>Benzene</b>	< 0.50	0.50	ug/L	EPA 8260B	11/17/2001
<b>Toluene</b>	< 0.50	0.50	ug/L	EPA 8260B	11/17/2001
<b>Ethylbenzene</b>	< 0.50	0.50	ug/L	EPA 8260B	11/17/2001
<b>Total Xylenes</b>	< 0.50	0.50	ug/L	EPA 8260B	11/17/2001
<b>Methyl-t-butyl ether (MTBE)</b>	330	0.50	ug/L	EPA 8260B	11/17/2001
<b>TPH as Gasoline</b>	360	50	ug/L	EPA 8260B	11/17/2001
Toluene - d8 (Surr)	101		% Recovery	EPA 8260B	11/17/2001
4-Bromofluorobenzene (Surr)	82.9		% Recovery	EPA 8260B	11/17/2001

Sample : **RW-1**

Matrix : Water

Lab Number : 23325-08

Sample Date :11/7/2001

Parameter	Measured Value	Method Reporting Limit	Units	Analysis Method	Date Analyzed
<b>Benzene</b>	< 0.50	0.50	ug/L	EPA 8260B	11/15/2001
<b>Toluene</b>	< 0.50	0.50	ug/L	EPA 8260B	11/15/2001
<b>Ethylbenzene</b>	< 0.50	0.50	ug/L	EPA 8260B	11/15/2001
<b>Total Xylenes</b>	< 0.50	0.50	ug/L	EPA 8260B	11/15/2001
<b>Methyl-t-butyl ether (MTBE)</b>	240	0.50	ug/L	EPA 8260B	11/15/2001
<b>TPH as Gasoline</b>	< 50	50	ug/L	EPA 8260B	11/15/2001
Toluene - d8 (Surr)	102		% Recovery	EPA 8260B	11/15/2001
4-Bromofluorobenzene (Surr)	113		% Recovery	EPA 8260B	11/15/2001

Approved By:  Joel Kiff

Report Number : 23325

Date : 11/20/2001

Project Name : **SAN LORENZO 3721**

Project Number :

23325 Quality Control Data - Method Blank

Parameter	Measured Value	Method Reporting Limit	Units	Analysis Method	Date Analyzed
<b>Benzene</b>	<b>&lt; 0.50</b>	0.50	ug/L	EPA 8260B	11/15/2001
<b>Toluene</b>	<b>&lt; 0.50</b>	0.50	ug/L	EPA 8260B	11/15/2001
<b>Ethylbenzene</b>	<b>&lt; 0.50</b>	0.50	ug/L	EPA 8260B	11/15/2001
<b>Total Xylenes</b>	<b>&lt; 0.50</b>	0.50	ug/L	EPA 8260B	11/15/2001
<b>Methyl-t-butyl ether (MTBE)</b>	<b>&lt; 0.50</b>	0.50	ug/L	EPA 8260B	11/15/2001
<b>TPH as Gasoline</b>	<b>&lt; 50</b>	50	ug/L	EPA 8260B	11/15/2001
Toluene - d8 (Surr)	101		% Recovery	EPA 8260B	11/15/2001
4-Bromofluorobenzene (Surr)	104		% Recovery	EPA 8260B	11/15/2001

Approved By:  Joel Kiff

Report Number : 23325

Date : 11/20/2001

QC Report : Matrix Spike/ Matrix Spike Duplicate

Project Name : **SAN LORENZO 3721**

Project Number :

Parameter	Spiked Sample	Sample Value	Spike Level	Spike Dup. Level	Spiked Sample Value	Duplicate Spiked Sample Value	Units	Analysis Method	Date Analyzed	Spiked Sample Percent Recov.	Duplicate Spiked Sample Percent Recov.	Relative Percent Diff.	Spiked Sample Percent Recov. Limit	Relative Percent Diff. Limit
Spike Recovery Data														
Benzene	23192-01	10	19.7	20.1	28.1	28.1	ug/L	EPA 8260B	11/15/200	90.3	88.6	1.89	70-130	25
Toluene	23192-01	0.85	19.7	20.1	19.8	19.7	ug/L	EPA 8260B	11/15/200	96.4	93.9	2.65	70-130	25
Tert-Butanol	23192-01	22	98.4	100	126	126	ug/L	EPA 8260B	11/15/200	105	104	1.56	70-130	25
Methyl-t-Butyl Ether	23192-01	220	19.7	20.1	260	259	ug/L	EPA 8260B	11/15/200	197	188	4.47	70-130	25

Approved By:  Joel Kiff

KIFF ANALYTICAL, LLC

720 Olive Drive, Suite D Davis, CA 95616 530-297-4800

Report Number : 23325

Date : 11/20/2001

**QC Report : Laboratory Control Sample (LCS)**

Project Name : **SAN LORENZO 3721**

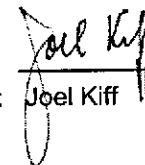
Project Number :

Parameter	Spike Level	Units	Analysis Method	Date Analyzed	LCS Percent Recov.	LCS Percent Recov. Limit
Benzene	19.3	ug/L	EPA 8260B	11/15/200	112	70-130
Toluene	19.3	ug/L	EPA 8260B	11/15/200	107	70-130
Tert-Butanol	96.6	ug/L	EPA 8260B	11/15/200	107	70-130
Methyl-t-Butyl Ether	19.3	ug/L	EPA 8260B	11/15/200	106	70-130

KIFF ANALYTICAL, LLC

720 Olive Drive, Suite D Davis, CA 95616 530-297-4800

Approved By:

  
Joel Kiff



**ENCLOSURE D**

Remediation System Analytical Results



Report Number : 23542

Date : 12/5/2001

Richard Munsch  
RDM Environmental  
1704 Via Riata  
Roseville, CA 95747

Subject : 5 Water Samples  
Project Name : 3721  
Project Number : 3721  
P.O. Number : 3721-66

Dear Mr. Munsch,

Chemical analysis of the samples referenced above has been completed. Summaries of the data are contained on the following pages. Sample(s) were received under documented chain-of-custody. US EPA protocols for sample storage and preservation were followed.

Kiff Analytical is certified by the State of California (# 2236). If you have any questions regarding procedures or results, please call me at 530-297-4800.

Sincerely,

A handwritten signature in black ink that reads "Joel Kiff". The signature is written in a cursive style with a large initial "J".

Joel Kiff



Report Number : 23542

Date : 12/5/2001

Project Name : 3721

Project Number : 3721

Sample : H2O-Inf

Matrix : Water

Lab Number : 23542-01

Sample Date : 11/23/2001

Parameter	Measured Value	Method Reporting Limit	Units	Analysis Method	Date Analyzed
Benzene	22	2.0	ug/L	EPA 8260B	11/30/2001
Toluene	< 2.0	2.0	ug/L	EPA 8260B	11/30/2001
Ethylbenzene	< 2.0	2.0	ug/L	EPA 8260B	11/30/2001
Total Xylenes	< 2.0	2.0	ug/L	EPA 8260B	11/30/2001
Methyl-t-butyl ether (MTBE)	630	20	ug/L	EPA 8260B	11/30/2001
TPH as Gasoline	< 200	200	ug/L	EPA 8260B	11/30/2001
Toluene - d8 (Surr)	96.9		% Recovery	EPA 8260B	11/30/2001
4-Bromofluorobenzene (Surr)	91.2		% Recovery	EPA 8260B	11/30/2001

Sample : H2O-DAT-Eff

Matrix : Water

Lab Number : 23542-02

Sample Date : 11/23/2001

Parameter	Measured Value	Method Reporting Limit	Units	Analysis Method	Date Analyzed
Benzene	< 0.50	0.50	ug/L	EPA 8260B	11/30/2001
Toluene	< 0.50	0.50	ug/L	EPA 8260B	11/30/2001
Ethylbenzene	< 0.50	0.50	ug/L	EPA 8260B	11/30/2001
Total Xylenes	< 0.50	0.50	ug/L	EPA 8260B	11/30/2001
Methyl-t-butyl ether (MTBE)	< 5.0	5.0	ug/L	EPA 8260B	11/30/2001
TPH as Gasoline	< 50	50	ug/L	EPA 8260B	11/30/2001
Toluene - d8 (Surr)	100		% Recovery	EPA 8260B	11/30/2001
4-Bromofluorobenzene (Surr)	93.0		% Recovery	EPA 8260B	11/30/2001

Approved By:  Joel Kiff





Report Number : 23542

Date : 12/5/2001

Project Name : 3721

Project Number : 3721

Sample : H2O-MID1

Matrix : Water

Lab Number : 23542-03

Sample Date : 11/23/2001

Parameter	Measured Value	Method Reporting Limit	Units	Analysis Method	Date Analyzed
Benzene	< 0.50	0.50	ug/L	EPA 8260B	11/30/2001
Toluene	< 0.50	0.50	ug/L	EPA 8260B	11/30/2001
Ethylbenzene	< 0.50	0.50	ug/L	EPA 8260B	11/30/2001
Total Xylenes	< 0.50	0.50	ug/L	EPA 8260B	11/30/2001
Methyl-t-butyl ether (MTBE)	31	5.0	ug/L	EPA 8260B	11/30/2001
TPH as Gasoline	< 50	50	ug/L	EPA 8260B	11/30/2001
Toluene - d8 (Surr)	99.2		% Recovery	EPA 8260B	11/30/2001
4-Bromofluorobenzene (Surr)	93.0		% Recovery	EPA 8260B	11/30/2001

Sample : H2O-Eff

Matrix : Water

Lab Number : 23542-04

Sample Date : 11/23/2001

Parameter	Measured Value	Method Reporting Limit	Units	Analysis Method	Date Analyzed
Benzene	< 0.50	0.50	ug/L	EPA 8260B	12/1/2001
Toluene	< 0.50	0.50	ug/L	EPA 8260B	12/1/2001
Ethylbenzene	< 0.50	0.50	ug/L	EPA 8260B	12/1/2001
Total Xylenes	< 0.50	0.50	ug/L	EPA 8260B	12/1/2001
Methyl-t-butyl ether (MTBE)	< 5.0	5.0	ug/L	EPA 8260B	12/1/2001
TPH as Gasoline	< 50	50	ug/L	EPA 8260B	12/1/2001
Toluene - d8 (Surr)	98.3		% Recovery	EPA 8260B	12/1/2001
4-Bromofluorobenzene (Surr)	106		% Recovery	EPA 8260B	12/1/2001

Approved By:  Joel Kiff



Report Number : 23542

Date : 12/5/2001

Project Name : 3721

Project Number : 3721

Sample : H2O-MID2

Matrix : Water

Lab Number : 23542-05

Sample Date :11/23/2001

Parameter	Measured Value	Method Reporting Limit	Units	Analysis Method	Date Analyzed
<b>Benzene</b>	<b>&lt; 0.50</b>	0.50	ug/L	EPA 8260B	11/30/2001
<b>Toluene</b>	<b>&lt; 0.50</b>	0.50	ug/L	EPA 8260B	11/30/2001
<b>Ethylbenzene</b>	<b>&lt; 0.50</b>	0.50	ug/L	EPA 8260B	11/30/2001
<b>Total Xylenes</b>	<b>&lt; 0.50</b>	0.50	ug/L	EPA 8260B	11/30/2001
<b>Methyl-t-butyl ether (MTBE)</b>	<b>&lt; 5.0</b>	5.0	ug/L	EPA 8260B	11/30/2001
<b>TPH as Gasoline</b>	<b>&lt; 50</b>	50	ug/L	EPA 8260B	11/30/2001
Toluene - d8 (Surr)	97.4		% Recovery	EPA 8260B	11/30/2001
4-Bromofluorobenzene (Surr)	106		% Recovery	EPA 8260B	11/30/2001

Approved By:  Joel Kiff

**Analysis Report: Chemical Oxygen Demand, EPA Method 410.4**

**Client: Joel Kiff**  
720 Olive Drive,  
Suite D  
Davis, CA 95616

**Project No.:** 3721  
**Contact:** Joel Kiff  
**Phone:** (530)297-4800

**Project:** 3721

**Date Sampled:** 11/23/2001  
**Date Received:** 11/27/2001  
**Date Extracted:** N/A  
**Date Analyzed:** 12/02/2001  
**Date Reported:** 12/03/2001

**Lab Contact:** James Liang  
**Lab ID No.:** T3570  
**Job No.:** 843570  
**COC Log No.:** 23542  
**Batch No.:** W011128C  
**Instrument ID:** UV002  
**Analyst ID:** PONGC  
**Matrix:** WA

---

**ANALYTICAL RESULTS**

---

Lab / Client ID Analyte	CAS No.	Results (mg/L)	Rep. Limit (mg/L)	Dilution (factor)
1A / H2O-Eff Chemical Oxygen Demand	N/A	ND	10	1.0

**ND = Not detected at or above indicated Reporting Limit**

**Analysis Report: pH, EPA Method 9040**

**Client: Joel Kiff**  
 720 Olive Drive,  
 Suite D  
 Davis, CA 95616

**Project No.: 3721**  
**Contact: Joel Kiff**  
**Phone: (530)297-4800**

**Project: 3721**

**Date Sampled: 11/23/2001**  
**Date Received: 11/27/2001**  
**Date Extracted: N/A**  
**Date Analyzed: 11/28/2001**  
**Date Reported: 12/03/2001**

**Lab Contact: James Liang**  
**Lab ID No.: T3570**  
**Job No.: 843570**  
**COC Log No.: 23542**  
**Batch No.: W01112BC**  
**Instrument ID: PH002**  
**Analyst ID: PONGC**  
**Matrix: WA**

**ANALYTICAL RESULTS**

Lab / Client ID Analyte	CAS No.	Value (Standard Units)
1B / H2O-Eff pH	N/A	9.07

**Analysis Report: Total Suspended Solids, EPA Method 160.2**

**Client: Joel Kiff**  
 720 Olive Drive,  
 Suite D  
 Davis, CA 95616

**Project No. : 3721**  
**Contact: Joel Kiff**  
**Phone: (530)297-4800**

**Project: 3721**

**Lab Contact: James Liang**  
**Lab ID No. : T3570**  
**Job No. : 843570**  
**COC Log No. : 23542**  
**Batch No. : W011128C**  
**Instrument ID: BA005**  
**Analyst ID: PONGC**  
**Matrix: WA**

**Date Sampled: 11/23/2001**  
**Date Received: 11/27/2001**  
**Date Extracted: N/A**  
**Date Analyzed: 11/29/2001**  
**Date Reported: 12/03/2001**

**ANALYTICAL RESULTS**

Lab / Client ID Analyte	CAS No.	Results (mg/L)	Rep. Limit (mg/L)
1B / H2O-Eff Total Suspended Solids	N/A	ND	5.0

ND = Not detected at or above indicated Reporting Limit



720 Olive Drive, Suite D  
 Davis, CA 95616  
 Lab: 530.297.4800  
 Fax: 530.297.4803

Lab No. 23542

Page 1 of 1

Project Manager: Richard Munnich Phone No.: (916) 771-7098

Company/Address: RDM Environmental FAX No.: (916) 771-4594

Project Number: 3721 P.O. No.: 3721-60 Email Address: \_\_\_\_\_  
 .pdf  .xls  .doc  other

Project Name: 3721 Sample Signature: [Signature]

Project Location: San Lorenzo

**Chain-of-Custody Record and Analysis Request**

**Analysis Request**

Sample Designation	Sampling		Container			Preservative				Matrix		BTEX (8021B)	BTEX/TPH Gas/MTBB (8021B/M8015)	TPH as Diesel (M8015)	TPH as Motor Oil (M8015)	TPH Gas/BTEX/MTBE (8260B)	5 Oxygenates/TPH Gas/BTEX (8260B)	7 Oxygenates/TPH Gas/BTEX (8260B)	5 Oxygenates (8260B)	7 Oxygenates (8260B)	Lead Scav. (1,2 DCA & 1,2 EDB - 8260B)	EPA 8260B (Full List)	Volatile Halocarbons (EPA 8260B)	Lead (7421/239.2)	TOTAL (X) W.E.T. (X)	S.O.P.	Ph, TSS	TAT	For Lab Use Only		
	Date	Time	40 ml VOA	SLEEVE		HCl	HNO <sub>3</sub>	ICE	NONE	WATER	SOIL																				
H <sub>2</sub> O - Inf	11/23/01					X	X			W		X																			-01
H <sub>2</sub> O - PAT-ETP	11/23/01					X	X			W		X																			-02
H <sub>2</sub> O - MID1	11/23/01					X	X			W		X																			-03
H <sub>2</sub> O - ETP	11/23/01					X	X	X	X	W		X													X	X				-04	

Relinquished by: [Signature] Date: \_\_\_\_\_ Time: \_\_\_\_\_ Received by: \_\_\_\_\_  
 Relinquished by: \_\_\_\_\_ Date: \_\_\_\_\_ Time: \_\_\_\_\_ Received by: \_\_\_\_\_  
 Relinquished by: \_\_\_\_\_ Date: 11/26/01 Time: 1651 Received by Laboratory: [Signature] / KIFF Analytical  
 Remarks: STAT  
 Bill to: Ultramar Inc. / [Signature]



Report Number : 23888

Date : 12/27/2001

Richard Munsch  
RDM Environmental  
1704 Via Riata  
Roseville, CA 95747

Subject : 5 Water Samples  
Project Name : 3721  
Project Number : 3721  
P.O. Number : 3721-66

Dear Mr. Munsch,

Chemical analysis of the samples referenced above has been completed. Summaries of the data are contained on the following pages. Sample(s) were received under documented chain-of-custody. US EPA protocols for sample storage and preservation were followed.

Kiff Analytical is certified by the State of California (# 2236). If you have any questions regarding procedures or results, please call me at 530-297-4800.

Sincerely,



Joel Kiff



Report Number : 23888

Date : 12/27/2001

Project Name : 3721

Project Number : 3721

Sample : H20-INF

Matrix : Water

Lab Number : 23888-01

Sample Date :12/13/2001

Parameter	Measured Value	Method Reporting Limit	Units	Analysis Method	Date Analyzed
Benzene	5.7	1.0	ug/L	EPA 8260B	12/23/2001
Toluene	< 1.0	1.0	ug/L	EPA 8260B	12/23/2001
Ethylbenzene	< 1.0	1.0	ug/L	EPA 8260B	12/23/2001
Total Xylenes	< 1.0	1.0	ug/L	EPA 8260B	12/23/2001
Methyl-t-butyl ether (MTBE)	370	10	ug/L	EPA 8260B	12/23/2001
TPH as Gasoline	< 100	100	ug/L	EPA 8260B	12/23/2001
Toluene - d8 (Surr)	98.8		% Recovery	EPA 8260B	12/23/2001
4-Bromofluorobenzene (Surr)	107		% Recovery	EPA 8260B	12/23/2001

Sample : H20-DAT-EFF

Matrix : Water

Lab Number : 23888-02

Sample Date :12/13/2001

Parameter	Measured Value	Method Reporting Limit	Units	Analysis Method	Date Analyzed
Benzene	< 0.50	0.50	ug/L	EPA 8260B	12/17/2001
Toluene	< 0.50	0.50	ug/L	EPA 8260B	12/17/2001
Ethylbenzene	< 0.50	0.50	ug/L	EPA 8260B	12/17/2001
Total Xylenes	< 0.50	0.50	ug/L	EPA 8260B	12/17/2001
Methyl-t-butyl ether (MTBE)	< 5.0	5.0	ug/L	EPA 8260B	12/17/2001
TPH as Gasoline	< 50	50	ug/L	EPA 8260B	12/17/2001
Toluene - d8 (Surr)	99.6		% Recovery	EPA 8260B	12/17/2001
4-Bromofluorobenzene (Surr)	104		% Recovery	EPA 8260B	12/17/2001

Approved By:  Joel Kiff





Report Number : 23888

Date : 12/27/2001

Project Name : 3721

Project Number : 3721

Sample : H20-MID 1

Matrix : Water

Lab Number : 23888-03

Sample Date :12/13/2001

Parameter	Measured Value	Method Reporting Limit	Units	Analysis Method	Date Analyzed
Benzene	< 0.50	0.50	ug/L	EPA 8260B	12/23/2001
Toluene	< 0.50	0.50	ug/L	EPA 8260B	12/23/2001
Ethylbenzene	< 0.50	0.50	ug/L	EPA 8260B	12/23/2001
Total Xylenes	< 0.50	0.50	ug/L	EPA 8260B	12/23/2001
Methyl-t-butyl ether (MTBE)	31	5.0	ug/L	EPA 8260B	12/23/2001
TPH as Gasoline	< 50	50	ug/L	EPA 8260B	12/23/2001
Toluene - d8 (Surr)	101		% Recovery	EPA 8260B	12/23/2001
4-Bromofluorobenzene (Surr)	97.9		% Recovery	EPA 8260B	12/23/2001

Sample : H10-MID 2

Matrix : Water

Lab Number : 23888-04

Sample Date :12/13/2001

Parameter	Measured Value	Method Reporting Limit	Units	Analysis Method	Date Analyzed
Benzene	< 0.50	0.50	ug/L	EPA 8260B	12/17/2001
Toluene	< 0.50	0.50	ug/L	EPA 8260B	12/17/2001
Ethylbenzene	< 0.50	0.50	ug/L	EPA 8260B	12/17/2001
Total Xylenes	< 0.50	0.50	ug/L	EPA 8260B	12/17/2001
Methyl-t-butyl ether (MTBE)	< 5.0	5.0	ug/L	EPA 8260B	12/17/2001
TPH as Gasoline	< 50	50	ug/L	EPA 8260B	12/17/2001
Toluene - d8 (Surr)	99.7		% Recovery	EPA 8260B	12/17/2001
4-Bromofluorobenzene (Surr)	104		% Recovery	EPA 8260B	12/17/2001

Approved By:  Joel Kiff



Report Number : 23888

Date : 12/27/2001

Project Name : 3721

Project Number : 3721

Sample : H20-EFF

Matrix : Water

Lab Number : 23888-05

Sample Date :12/13/2001

Parameter	Measured Value	Method Reporting Limit	Units	Analysis Method	Date Analyzed
Benzene	< 0.50	0.50	ug/L	EPA 8260B	12/17/2001
Toluene	< 0.50	0.50	ug/L	EPA 8260B	12/17/2001
Ethylbenzene	< 0.50	0.50	ug/L	EPA 8260B	12/17/2001
Total Xylenes	< 0.50	0.50	ug/L	EPA 8260B	12/17/2001
Methyl-t-butyl ether (MTBE)	< 5.0	5.0	ug/L	EPA 8260B	12/17/2001
TPH as Gasoline	< 50	50	ug/L	EPA 8260B	12/17/2001
Toluene - d8 (Surr)	99.4		% Recovery	EPA 8260B	12/17/2001
4-Bromofluorobenzene (Surr)	103		% Recovery	EPA 8260B	12/17/2001

Approved By:  Joel Kiff

Report Number : 23888

Date : 12/27/2001

**QC Report : Method Blank Data**

Project Name : **3721**

Project Number : **3721**

<u>Parameter</u>	<u>Measured Value</u>	<u>Method Reporting Limit</u>	<u>Units</u>	<u>Analysis Method</u>	<u>Date Analyzed</u>
Benzene	< 0.50	0.50	ug/L	EPA 8260B	12/16/2001
Toluene	< 0.50	0.50	ug/L	EPA 8260B	12/16/2001
Ethylbenzene	< 0.50	0.50	ug/L	EPA 8260B	12/16/2001
Total Xylenes	< 0.50	0.50	ug/L	EPA 8260B	12/16/2001
Methyl-t-butyl ether (MTBE)	< 5.0	5.0	ug/L	EPA 8260B	12/16/2001
TPH as Gasoline	< 50	50	ug/L	EPA 8260B	12/16/2001
Toluene - d8 (Surr)	97.0		%	EPA 8260B	12/16/2001
4-Bromofluorobenzene (Surr)	106		%	EPA 8260B	12/16/2001
Benzene	< 0.50	0.50	ug/L	EPA 8260B	12/16/2001
Toluene	< 0.50	0.50	ug/L	EPA 8260B	12/16/2001
Ethylbenzene	< 0.50	0.50	ug/L	EPA 8260B	12/16/2001
Total Xylenes	< 0.50	0.50	ug/L	EPA 8260B	12/16/2001
Methyl-t-butyl ether (MTBE)	< 5.0	5.0	ug/L	EPA 8260B	12/16/2001
TPH as Gasoline	< 50	50	ug/L	EPA 8260B	12/16/2001
Toluene - d8 (Surr)	99.8		%	EPA 8260B	12/16/2001
4-Bromofluorobenzene (Surr)	104		%	EPA 8260B	12/16/2001

<u>Parameter</u>	<u>Measured Value</u>	<u>Method Reporting Limit</u>	<u>Units</u>	<u>Analysis Method</u>	<u>Date Analyzed</u>
------------------	-----------------------	-------------------------------	--------------	------------------------	----------------------

Approved By:  \_\_\_\_\_  
Joel Kiff

KIFF ANALYTICAL, LLC

720 Olive Drive, Suite D Davis, CA 95616 530-297-4800

Report Number : 23888

Date : 12/27/2001

**QC Report : Matrix Spike/ Matrix Spike Duplicate**

Project Name : **3721**

Project Number : **3721**

Parameter	Spiked Sample	Sample Value	Spike Level	Spike Dup. Level	Spiked Sample Value	Duplicate Spiked Sample Value	Units	Analysis Method	Date Analyzed	Spiked Sample Percent Recov.	Duplicate Spiked Sample Percent Recov.	Relative Percent Diff.	Spiked Sample Percent Recov. Limit	Relative Percent Diff. Limit
Benzene	23880-23	<0.50	19.2	19.7	19.6	20.1	ug/L	EPA 8260B	12/17/2001	102	102	0.464	70-130	25
Toluene	23880-23	<0.50	19.2	19.7	19.9	20.2	ug/L	EPA 8260B	12/17/2001	104	102	1.33	70-130	25
Tert-Butanol	23880-23	8.2	95.9	98.6	110	116	ug/L	EPA 8260B	12/17/2001	106	109	2.79	70-130	25
Methyl-t-Butyl Ether	23880-23	16	19.2	19.7	32.9	33.4	ug/L	EPA 8260B	12/17/2001	86.6	86.4	0.326	70-130	25
Benzene	23861-02	<0.50	40.0	40.0	48.6	47.7	ug/L	EPA 8260B	12/16/2001	121	119	1.77	70-130	25
Toluene	23861-02	<0.50	40.0	40.0	49.2	48.5	ug/L	EPA 8260B	12/16/2001	123	121	1.47	70-130	25
Tert-Butanol	23861-02	<5.0	200	200	227	228	ug/L	EPA 8260B	12/16/2001	114	114	0.228	70-130	25
Methyl-t-Butyl Ether	23861-02	<0.50	40.0	40.0	50.4	50.1	ug/L	EPA 8260B	12/16/2001	126	125	0.617	70-130	25

Approved By:  \_\_\_\_\_  
 Joel Kiff

KIFF ANALYTICAL, LLC

720 Olive Drive, Suite D Davis, CA 95616 530-297-4800

Report Number : 23888

Date : 12/27/2001

QC Report : Laboratory Control Sample (LCS)

Project Name : 3721

Project Number : 3721

Parameter	Spike Level	Units	Analysis Method	Date Analyzed	LCS Percent Recov.	LCS Percent Recov. Limit
Benzene	20.0	ug/L	EPA 8260B	12/17/200	104	70-130
Toluene	20.0	ug/L	EPA 8260B	12/17/200	105	70-130
Tert-Butanol	100	ug/L	EPA 8260B	12/17/200	109	70-130
Methyl-t-Butyl Ether	20.0	ug/L	EPA 8260B	12/17/200	91.7	70-130
Benzene	40.0	ug/L	EPA 8260B	12/16/200	103	70-130
Toluene	40.0	ug/L	EPA 8260B	12/16/200	104	70-130
Tert-Butanol	200	ug/L	EPA 8260B	12/16/200	101	70-130
Methyl-t-Butyl Ether	40.0	ug/L	EPA 8260B	12/16/200	106	70-130

KIFF ANALYTICAL, LLC

720 Olive Drive, Suite D Davis, CA 95616 530-297-4800

Approved By:  Joel Kiff

**Analysis Report: Chemical Oxygen Demand, EPA Method 410.4**

**Client: Joel Kiff**  
 720 Olive Drive,  
 Suite D  
 Davis, CA 95616

**Project No.:** 3721  
**Contact:** Joel Kiff  
**Phone:** (530)297-4800

**Project:** 3721

**Date Sampled:** 12/13/2001  
**Date Received:** 12/17/2001  
**Date Extracted:** N/A  
**Date Analyzed:** 12/18/2001  
**Date Reported:** 12/26/2001

**Lab Contact:** James Liang  
**Lab ID No.:** T4104  
**Job No.:** 844104  
**COC Log No.:** 23888  
**Batch No.:** W011217W  
**Instrument ID:** UV002  
**Analyst ID:** CHARLESS  
**Matrix:** WA

**ANALYTICAL RESULTS**

Lab / Client ID Analyte	CAS No.	Results (mg/L)	Rep. Limit (mg/L)	Dilution (factor)
1A / H2O-EFF Chemical Oxygen Demand	N/A	ND	10	1.0

**ND = Not detected at or above indicated Reporting Limit**





Report Number : 23540

Date : 12/3/2001

Richard Munsch  
RDM Environmental  
1704 Via Riata  
Roseville, CA 95747

Subject : 4 Air Samples  
Project Name : 3721  
Project Number : 3721  
P.O. Number : 3721-66

Dear Mr. Munsch,

Chemical analysis of the samples referenced above has been completed. Summaries of the data are contained on the following pages. Sample(s) were received under documented chain-of-custody. US EPA protocols for sample storage and preservation were followed.

Kiff Analytical is certified by the State of California (# 2236). If you have any questions regarding procedures or results, please call me at 530-297-4800.

Sincerely,

A handwritten signature in black ink that reads "Joel Kiff". The signature is written in a cursive style with a large, looped initial "J".

Joel Kiff





Report Number : 23540

Date : 12/3/2001

Project Name : 3721

Project Number : 3721

Sample : Air-Inf

Matrix : Air

Lab Number : 23540-01

Sample Date :11/23/2001

Parameter	Measured Value	Method Reporting Limit	Units	Analysis Method	Date Analyzed
Benzene	< 0.050	0.050	Molar ppm	EPA 8260B	11/26/2001
Toluene	< 0.050	0.050	Molar ppm	EPA 8260B	11/26/2001
Ethylbenzene	< 0.050	0.050	Molar ppm	EPA 8260B	11/26/2001
Total Xylenes	< 0.050	0.050	Molar ppm	EPA 8260B	11/26/2001
TPH as Gasoline	< 5.0	5.0	Molar ppm	EPA 8260B	11/26/2001
Toluene - d8 (Surr)	99.4		% Recovery	EPA 8260B	11/26/2001
4-Bromofluorobenzene (Surr)	105		% Recovery	EPA 8260B	11/26/2001

Sample : Air-MID

Matrix : Air

Lab Number : 23540-02

Sample Date :11/23/2001

Parameter	Measured Value	Method Reporting Limit	Units	Analysis Method	Date Analyzed
Benzene	< 0.050	0.050	Molar ppm	EPA 8260B	11/26/2001
Toluene	< 0.050	0.050	Molar ppm	EPA 8260B	11/26/2001
Ethylbenzene	< 0.050	0.050	Molar ppm	EPA 8260B	11/26/2001
Total Xylenes	< 0.050	0.050	Molar ppm	EPA 8260B	11/26/2001
TPH as Gasoline	< 5.0	5.0	Molar ppm	EPA 8260B	11/26/2001
Toluene - d8 (Surr)	99.5		% Recovery	EPA 8260B	11/26/2001
4-Bromofluorobenzene (Surr)	104		% Recovery	EPA 8260B	11/26/2001

Approved By:  Joel Kiff



Report Number : 23540

Date : 12/3/2001

Project Name : 3721

Project Number : 3721

Sample : Air-Eff

Matrix : Air

Lab Number : 23540-03

Sample Date :11/23/2001

Parameter	Measured Value	Method Reporting Limit	Units	Analysis Method	Date Analyzed
Benzene	< 0.050	0.050	Molar ppm	EPA 8260B	11/26/2001
Toluene	< 0.050	0.050	Molar ppm	EPA 8260B	11/26/2001
Ethylbenzene	< 0.050	0.050	Molar ppm	EPA 8260B	11/26/2001
Total Xylenes	< 0.050	0.050	Molar ppm	EPA 8260B	11/26/2001
TPH as Gasoline	< 5.0	5.0	Molar ppm	EPA 8260B	11/26/2001
Toluene - d8 (Surr)	99.4		% Recovery	EPA 8260B	11/26/2001
4-Bromofluorobenzene (Surr)	103		% Recovery	EPA 8260B	11/26/2001

Sample : DAT-Eff

Matrix : Air

Lab Number : 23540-04

Sample Date :11/23/2001

Parameter	Measured Value	Method Reporting Limit	Units	Analysis Method	Date Analyzed
Benzene	< 0.050	0.050	Molar ppm	EPA 8260B	11/26/2001
Toluene	< 0.050	0.050	Molar ppm	EPA 8260B	11/26/2001
Ethylbenzene	< 0.050	0.050	Molar ppm	EPA 8260B	11/26/2001
Total Xylenes	< 0.050	0.050	Molar ppm	EPA 8260B	11/26/2001
TPH as Gasoline	< 5.0	5.0	Molar ppm	EPA 8260B	11/26/2001
Toluene - d8 (Surr)	99.9		% Recovery	EPA 8260B	11/26/2001
4-Bromofluorobenzene (Surr)	102		% Recovery	EPA 8260B	11/26/2001

Approved By:  Joel Kiff





Report Number : 23885

Date : 12/20/01

Richard Munsch  
RDM Environmental  
1704 Via Riata  
Roseville, CA 95747

Subject : 3 Air Samples  
Project Name : 3721  
Project Number : 3721  
P.O. Number : 3721-66

Dear Mr. Munsch,

Chemical analysis of the samples referenced above has been completed. Summaries of the data are contained on the following pages. Sample(s) were received under documented chain-of-custody. US EPA protocols for sample storage and preservation were followed.

Kiff Analytical is certified by the State of California (# 2236). If you have any questions regarding procedures or results, please call me at 530-297-4800.

Sincerely,

A handwritten signature in black ink that reads "Joel Kiff". The signature is stylized and cursive.

Joel Kiff



Report Number : 23885

Date : 12/20/01

Project Name : 3721

Project Number : 3721

Sample : SVE-INF

Matrix : Air

Lab Number : 23885-01

Sample Date :12/13/01

Parameter	Measured Value	Method Reporting Limit	Units	Analysis Method	Date Analyzed
Benzene	< 0.050	0.050	Molar ppm	EPA 8260B	12/14/01
Toluene	< 0.050	0.050	Molar ppm	EPA 8260B	12/14/01
Ethylbenzene	< 0.050	0.050	Molar ppm	EPA 8260B	12/14/01
Total Xylenes	< 0.050	0.050	Molar ppm	EPA 8260B	12/14/01
TPH as Gasoline	< 5.0	5.0	Molar ppm	EPA 8260B	12/14/01
Toluene - d8 (Surr)	104		% Recovery	EPA 8260B	12/14/01
4-Bromofluorobenzene (Surr)	117		% Recovery	EPA 8260B	12/14/01

Sample : SVE-MID

Matrix : Air

Lab Number : 23885-02

Sample Date :12/13/01

Parameter	Measured Value	Method Reporting Limit	Units	Analysis Method	Date Analyzed
Benzene	< 0.050	0.050	Molar ppm	EPA 8260B	12/14/01
Toluene	< 0.050	0.050	Molar ppm	EPA 8260B	12/14/01
Ethylbenzene	< 0.050	0.050	Molar ppm	EPA 8260B	12/14/01
Total Xylenes	< 0.050	0.050	Molar ppm	EPA 8260B	12/14/01
TPH as Gasoline	< 5.0	5.0	Molar ppm	EPA 8260B	12/14/01
Toluene - d8 (Surr)	98.4		% Recovery	EPA 8260B	12/14/01
4-Bromofluorobenzene (Surr)	93.7		% Recovery	EPA 8260B	12/14/01

Approved By:  Joel Kiff



Report Number : 23885

Date : 12/20/01

Project Name : 3721

Project Number : 3721


Sample : SVE-EFF

Matrix : Air

Lab Number : 23885-03

Sample Date :12/13/01

Parameter	Measured Value	Method Reporting Limit	Units	Analysis Method	Date Analyzed
Benzene	< 0.050	0.050	Molar ppm	EPA 8260B	12/14/01
Toluene	< 0.050	0.050	Molar ppm	EPA 8260B	12/14/01
Ethylbenzene	< 0.050	0.050	Molar ppm	EPA 8260B	12/14/01
Total Xylenes	< 0.050	0.050	Molar ppm	EPA 8260B	12/14/01
TPH as Gasoline	< 5.0	5.0	Molar ppm	EPA 8260B	12/14/01
Toluene - d8 (Surr)	95.7		% Recovery	EPA 8260B	12/14/01
4-Bromofluorobenzene (Surr)	117		% Recovery	EPA 8260B	12/14/01

Approved By:  Joel Kiff

