



RO 495
6

Denis L. Brown

Shell Oil Products US

HSE – Environmental Services
20945 S. Wilmington Ave.
Carson, CA 90810-1039

Tel (707) 865 0251

Fax (707) 865 2542

Email denis.l.brown@shell.com

June 7, 2005

Rob Weston
~~Lawrence Seto~~

Alameda County Health Care Services Agency
1131 Harbor Bay Parkway, Suite 250
Alameda, CA 94502-6577

Re: Dispenser and Piping Upgrade Sampling Report
Shell Service Station
29 Wildwood Avenue
Piedmont, California
SAP # 135765
Incident No: 98995822

Alameda County
JUN 10 2005
Environmental Health

Dear Mr. Seto:

Attached for your review and comment is a copy of the *Dispenser and Piping Upgrade Sampling Report* for the above referenced site. Upon information and belief, I declare, under penalty of perjury, that the information contained in the attached document is true and correct.

If you have any questions or concerns, please call me at (707) 865-0251.

Sincerely,

Denis L. Brown
Sr. Environmental Engineer

Lawrence Seto
Senior Hazardous Materials Specialist
Department of Environmental Health
Alameda County Health Care Services Agency
1131 Harbor Bay Parkway, 2nd Floor
Alameda, California 94502

Re: **Dispenser and Piping Upgrade Sampling Report**

Shell Service Station
29 Wildwood Avenue
Piedmont, California
SAP # 135765
Cambria Project #207-0687-001
ACEH Case #1107

Alameda County
JUN 10 2005
Environmental Health



Dear Mr. Seto:

On behalf of Equilon Enterprises LLC dba Shell Oil Products US (Shell), Cambria Environmental Technology, Inc. (Cambria) is submitting this *Dispenser and Piping Upgrade Sampling Report* which presents the results of soil sampling conducted during station upgrade activities at the referenced site. Presented below are a summary of site conditions, sampling activities, and analytical results.

SITE CONDITIONS

Site Location: This active Shell station is located at the Wildwood Avenue and Grand Avenue intersection in Piedmont, California (Figure 1). The site is surrounded primarily by commercial and residential properties. The site contains three product underground storage tanks (USTs), one 550-gallon waste oil UST, and two dispenser islands.

SAMPLING ACTIVITIES AND SAMPLE ANALYSIS

Personnel Present: Lawrence Seto, Senior Hazardous Materials Specialist, Department of Environmental, Health, Alameda County Health Care Services Agency (ACHCSA) (April 5 and 29, 2005).
Andy Ellsmore, Staff Geologist, Cambria (April 5, 2005).
Steward Dalie, Senior Staff Geologist, Cambria (April 29, 2005).

**Cambria
Environmental
Technology, Inc.**

5900 Hollis Street
Suite A
Emeryville, CA 94608
Tel (510) 420-0700
Fax (510) 420-9170

Sample Dates: April 5, 2005 and April 29, 2005.

Sampling Requirements: As Mr. Seto directed during field activities on April 5 and 29, 2005, one soil sample was collected beneath each of the two dispensers and at selected piping locations. Samples were collected at a minimum of 2 feet into native soil (Figure 2). Attachment A presents Cambria's standard procedures for dispenser and piping sampling.


Dispenser Soil Sampling: As Mr. Seto directed on April 5, 2005, two dispenser soil samples were collected at depths of 3 feet below grade (fbg) (Figure 2). Field indications of hydrocarbons, including staining and odor, were observed in both dispenser areas. A pink-colored viscous product was observed in the Dispenser 1/2 excavation. This pink liquid was not observed during piping sampling on April 29, 2005. Due to subsurface piping and conduit restrictions, over-excavation was not conducted at this location (Figure 2).

Product Piping Soil Sampling: As Mr. Seto directed on April 29, 2005, three product piping soil samples were collected at depths of 5 fbg (Figure 2). Field indications of hydrocarbons, including staining and odor, were observed in the vicinity of the P-2-5 sample location. No over-excavation was conducted at this location.

Sample Analyses: State-certified Kiff Analytical Laboratories (Kiff) of Davis, California analyzed the two dispenser soil samples for total petroleum hydrocarbons as gasoline (TPHg), benzene, toluene, ethyl benzene, and xylenes (BTEX), and methyl tert-butyl ether (MTBE) by EPA Method 8260B. In an attempt to identify the pink-colored viscous product, Kiff also analyzed the soil sample collected from the Dispenser 1/2 for total petroleum hydrocarbons as diesel (TPHd) by EPA Method 8015M. State-certified Severn Trent Laboratories Inc. of Pleasanton, California analyzed the product piping soil samples for TPHg, BTEX, and MTBE. Table 1 summarizes laboratory analytical results. Attachment B presents laboratory analytical reports and chain of custody records.

Waste Handling: Upgrade activities generated approximately 47 tons of soil. To characterize stockpiled soil for disposal, one four-point composite sample was collected and analyzed for TPHg and BTEX by EPA Method 8260B and for total lead by EPA Method 6010B. The stockpile was transported from the site to Forward Landfill in Manteca, California for disposal on May 13, 2005. The soil disposal confirmation is included as Attachment C.

ANALYTICAL RESULTS



TPHg was detected in three soil samples at a maximum concentration of 610 parts per million (ppm) in soil sample P-2-5. TPHd was detected in two soil samples at a maximum concentration of 890 ppm in sample D-1-3.0. The pink fluid was observed at this sample location during sampling activities. From the field observations and laboratory analysis, the identity of the fluid remains unclear. Benzene was detected in one soil sample at a concentration of 0.068 ppm in sample D-1-3.0. Ethylbenzene, total xylenes, and MTBE were detected at maximum concentrations of 8.0 ppm, 0.66 ppm, and 0.18 ppm, respectively, in sample D-1-3.0. Toluene was not detected in any of the samples collected during these activities. Table 1 summarizes laboratory analytical results. The certified analytical reports are included in Attachment B.

CONCLUSIONS

This site is an open ACHCSA leaking underground fuel tank case under Mr. Jerry Wickham's oversight. In Cambria's April 6, 1998 *Dispenser Soil Sampling Report*, TPHg was reported at a concentration of 1,600 ppm for one soil sample collected from beneath Dispenser 3/4; benzene at 6.3 ppm; toluene at 24 ppm; ethylbenzene at 18 ppm; xylenes at 160 ppm; and MTBE at 36 ppm (Table 1).

Comparison of current soil results to the previous 1998 soil sampling results indicate that maximum gasoline and BTEX concentrations have decreased. As a result, it appears that the currently detected hydrocarbon soil impacts have resulted from a previous release, and not from a new release.

Based on these soil sampling results, Cambria does not recommend any additional soil investigation or remediation in the dispenser and piping areas.

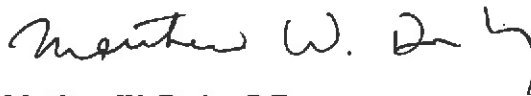
CLOSING

Please call David Gibbs (510) 420-3363 if you have any questions or comments.

Sincerely,
Cambria Environmental Technology, Inc.



David M. Gibbs, P.G.
Project Geologist



Matthew W. Derby, P.E.
Senior Project Engineer



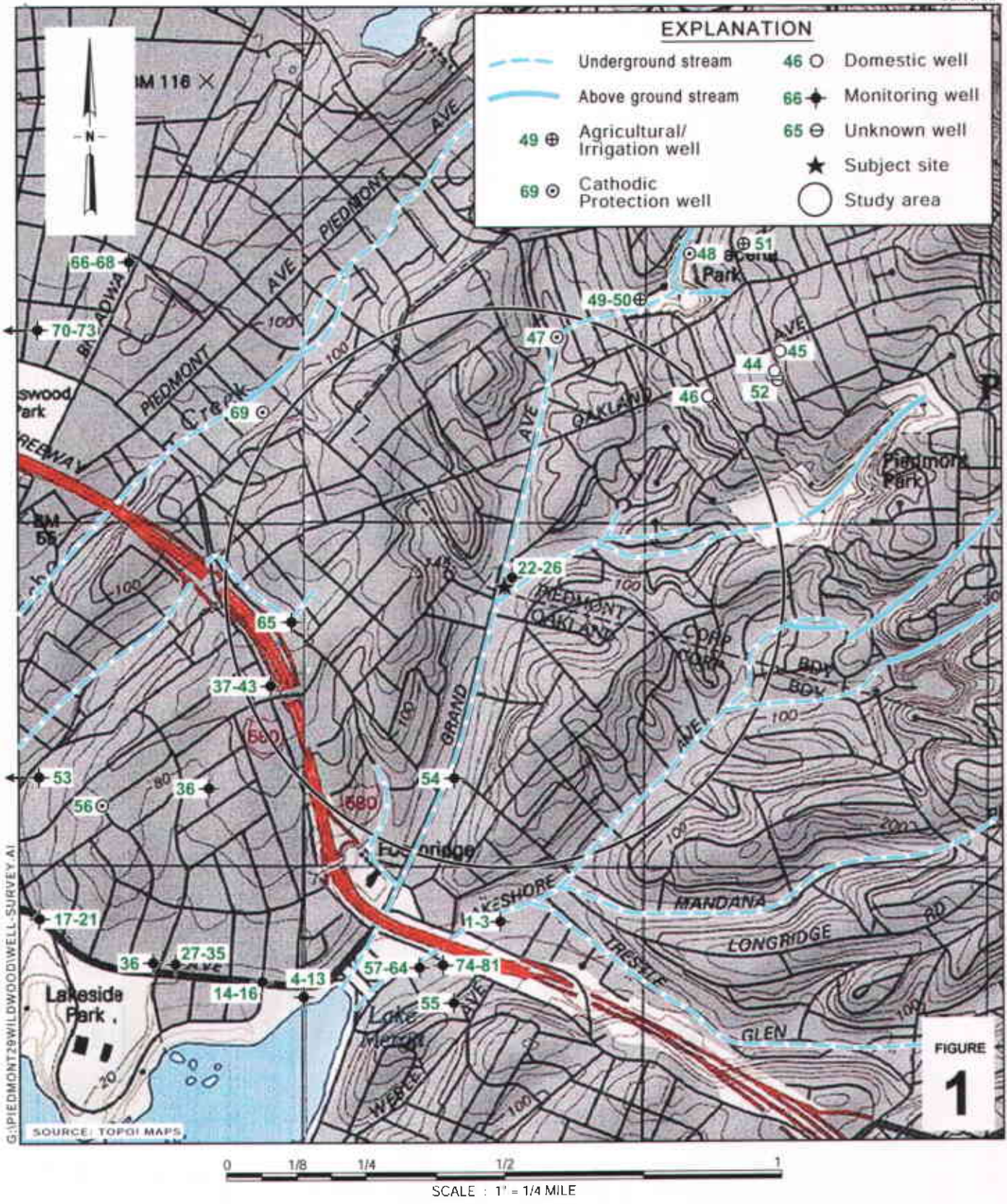
Figures: 1 - Vicinity Map/Area Well Survey
 2 - Soil Sample Location Map

Table: 1 - Historic Soil Analytical Data - TPHg, TPHd, BTEX, and MTBE

Attachments: A - Standard Piping and Dispenser Removal Sampling Procedures
 B - Certified Laboratory Analytical Reports
 C - Soil Stockpile Disposal Documentation

cc: Denis Brown, Shell Oil Products US, 20945 S. Wilmington Ave., Carson, CA 90810
 William Merchant, Shell Oil Products US, 9141 E. Stockton Blvd., Suite #250-321, Elk
 Grove, CA 95624
 Jerry Wickham, Alameda County Health Care Services Agency, 1131 Harbor Bay
 Parkway, 2nd Floor, Room 250, Alameda, CA, 94502-6577

G:\Piedmont 29 Wildwood\2005 Upgrades\Report\29 Wildwood Upgrade RPT.doc



Shell-branded Service Station
 29 Wildwood Avenue
 Piedmont, California
 Incident #98995822

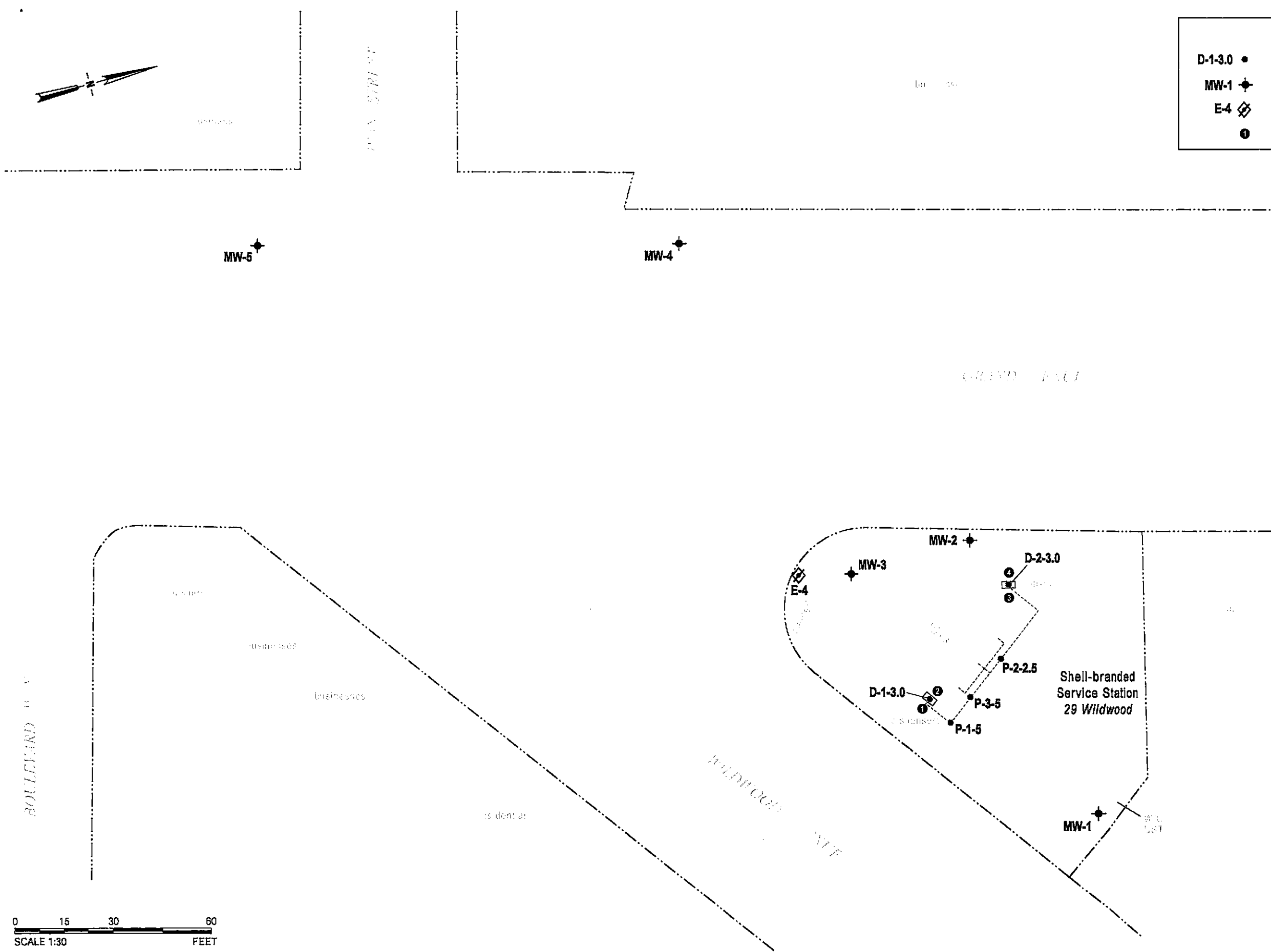


C A M B R I A

Vicinity/Area Well Survey Map

1/2 Mile Radius

EXPLANATION	
D-1-3.0 •	Soil sample location
MW-1 ◆	Monitoring well
E-4 ◻	Destroyed flowing artesian monitoring well
①	Dispenser number



G:\PIEDMONT29WILDWOOD\FIGURES\SITE_PLAN-6-05.A1

SCALE 1:30
0 15 30 60
FEET



FIGURE
2

Shell-branded Service Station
 29 Wildwood Avenue
 Piedmont, California
 Incident #98995822

Table 1. Historic Soil Analytical Data - TPHg, TPHd, BTEX, and MTBE - 29 Wildwood, Piedmont, California Incident #98995822

Sample ID	Sample Depth (fbg)	Sample Date	TPHg	TPHd	parts per million			Total Xylenes	MTBE
					Benzene	Toluene	Ethyl- benzene		
<i>1998 Upgrade Sampling</i>									
D-2	2.0	3/3/1998	1,600^a	--	6.3^b	24^b	18^b	160^b	36^c
<i>2005 Upgrade Sampling</i>									
D-1-3.0	3.0	4/5/2005	500	890	0.068	<0.050	8.0	0.66	0.18
D-2-3.0	3.0	4/5/2005	<1.0	9.3	<0.0050	<0.0050	<0.0050	<0.0050	<0.0050
P-1-5	5.0	4/29/2005	<1.0	--	<0.0050	<0.0050	<0.0050	<0.0050	<0.0050
P-2-5	5.0	4/29/2005	610	--	<0.50	<0.50	7.8	<0.50	<0.50
P-3-5	5.0	4/29/2005	51	--	<0.50	<0.50	<0.50	<0.50	<0.50

Abbreviations and Notes:

a: TPHg = Total petroleum hydrocarbons as gasoline by modified EPA Method 8015.

b: Benzene, ethylbenzene, toluene, and total xylenes analyzed by EPA Method 8020

c: MTBE = Methyl tert-butyl ether by EPA Method 8020.

TPHg = Total petroleum hydrocarbons as gasoline, analyzed by modified EPA Method 8260B.

TPHd = Total petroleum hydrocarbons as diesel, analyzed by EPA 8015M

Benzene, toluene, ethylbenzene, and total xylenes analyzed by EPA Method 8260B.

MTBE = Methyl tertiary-butyl ether, analyzed by EPA Methods 8260B.

-- = not sampled

fbg = Feet below grade.

<n = Below laboratory reporting limit of n ppm.

ATTACHMENT A

Standard Piping and Dispenser Removal Sampling Procedures

CAMBRIA

STANDARD PIPING AND DISPENSER REMOVAL SAMPLING PROCEDURES

Cambria Environmental Technology, Inc. (Cambria) has developed standard operating procedures for collecting soil samples during petroleum dispenser and piping removal. These procedures ensure that the samples are collected, handled, and documented in compliance with California Administration Code Title 23: Waters; Chapter 3: Water Resources Control Board; Subchapter 16: Underground Storage Tank Regulations (Title 23). Cambria's sampling procedures are based on guidelines contained in the California State Regional Water Quality Control Board Tri-Regional Staff Recommendations for Preliminary Evaluation and Investigation of Underground Tank Sites dated August 10, 1990.

Piping and Dispenser Removal Sampling

The objective of sample collection during routine dispenser and piping removals is to determine whether hydrocarbons or other stored chemicals have leaked to the subsurface. We collect one soil sample from the native soil beneath each dispenser unit, at each piping elbow, and at every 20 ft of product piping, as applicable.

The soil samples are collected in steam cleaned brass or steel tubes from either a driven split-spoon type sampler or the bucket of a backhoe. When a backhoe is used, approximately three inches of soil are scraped from the surface and the tube is driven into the exposed soil.

Upon removal from the split-spoon sampler or the backhoe, the samples are trimmed flush, capped with Teflon sheets and plastic end caps, labeled, logged and refrigerated for delivery under chain of custody to a State certified analytic laboratory.

ATTACHMENT B

Certified Laboratory Analytical Reports

Dispenser Sample Analytical Results



Report Number : 43126

Date : 4/8/2005

Martin Wills
Cambria Environmental Technology, Inc.
5900 Hollis Street, Suite A
Emeryville, CA

Subject : 2 Soil Samples
Project Name : 29 Wildwood Avenue, Piedmont, CA
Project Number : 207-0687-001
P.O. Number : 135765

Dear Mr. Wills,

Chemical analysis of the samples referenced above has been completed. Summaries of the data are contained on the following pages. Sample(s) were received under documented chain-of-custody. US EPA protocols for sample storage and preservation were followed.

Kiff Analytical is certified by the State of California (# 2236). If you have any questions regarding procedures or results, please call me at 530-297-4800.

Sincerely,

A handwritten signature in black ink, appearing to read "Joel Kiff".

Joel Kiff



Report Number : 43126

Date : 4/8/2005

Subject : 2 Soil Samples
Project Name : 29 Wildwood Avenue, Piedmont, CA
Project Number : 207-0687-001
P.O. Number : 135765

Case Narrative

Hydrocarbons reported as TPH as Diesel do not exhibit a typical Diesel chromatographic pattern for sample D-2-3.0. These hydrocarbons are higher boiling than typical diesel fuel.

Approved By:

A handwritten signature in black ink, appearing to read "Jde Kiff".

Jde Kiff



Report Number : 43126

Date : 4/8/2005

Project Name : 29 Wildwood Avenue, Piedmont, CA

Project Number : 207-0687-001

Sample : D-1-3.0

Matrix : Soil

Lab Number : 43126-01

Sample Date :4/5/2005

Parameter	Measured Value	Method Reporting Limit	Units	Analysis Method	Date Analyzed
Benzene	0.068	0.050	mg/Kg	EPA 8260B	4/7/2005
Toluene	< 0.050	0.050	mg/Kg	EPA 8260B	4/7/2005
Ethylbenzene	8.0	0.050	mg/Kg	EPA 8260B	4/7/2005
Total Xylenes	0.66	0.050	mg/Kg	EPA 8260B	4/7/2005
Methyl-t-butyl ether (MTBE)	0.18	0.050	mg/Kg	EPA 8260B	4/7/2005
TPH as Gasoline	500	5.0	mg/Kg	EPA 8260B	4/7/2005
Toluene - d8 (Surr)	97.7		% Recovery	EPA 8260B	4/7/2005
4-Bromofluorobenzene (Surr)	106		% Recovery	EPA 8260B	4/7/2005
TPH as Diesel	890	1.0	mg/Kg	M EPA 8015	4/8/2005
1-Chlorooctadecane (Diesel Surrogate)	105		% Recovery	M EPA 8015	4/8/2005

Sample : D-2-3.0

Matrix : Soil

Lab Number : 43126-02

Sample Date :4/5/2005

Parameter	Measured Value	Method Reporting Limit	Units	Analysis Method	Date Analyzed
Benzene	< 0.0050	0.0050	mg/Kg	EPA 8260B	4/6/2005
Toluene	< 0.0050	0.0050	mg/Kg	EPA 8260B	4/6/2005
Ethylbenzene	< 0.0050	0.0050	mg/Kg	EPA 8260B	4/6/2005
Total Xylenes	< 0.0050	0.0050	mg/Kg	EPA 8260B	4/6/2005
Methyl-t-butyl ether (MTBE)	< 0.0050	0.0050	mg/Kg	EPA 8260B	4/6/2005
TPH as Gasoline	< 1.0	1.0	mg/Kg	EPA 8260B	4/6/2005
Toluene - d8 (Surr)	97.5		% Recovery	EPA 8260B	4/6/2005
4-Bromofluorobenzene (Surr)	101		% Recovery	EPA 8260B	4/6/2005
TPH as Diesel	9.3	1.0	mg/Kg	M EPA 8015	4/8/2005
1-Chlorooctadecane (Diesel Surrogate)	114		% Recovery	M EPA 8015	4/8/2005

Approved By:


Joel Kiff

Report Number : 43126

Date : 4/8/2005

QC Report : Method Blank Data

Project Name : **29 Wildwood Avenue, Piedmont, CA**

Project Number : **207-0687-001**

<u>Parameter</u>	<u>Measured Value</u>	<u>Method Reporting Limit</u>	<u>Units</u>	<u>Analysis Method</u>	<u>Date Analyzed</u>
TPH as Diesel	< 1.0	1.0	mg/Kg	M EPA 8015	4/6/2005
1-Chlorooctadecane (Diesel Surrogate)	107		%	M EPA 8015	4/6/2005
Benzene	< 0.0050	0.0050	mg/Kg	EPA 8260B	4/6/2005
Toluene	< 0.0050	0.0050	mg/Kg	EPA 8260B	4/6/2005
Ethylbenzene	< 0.0050	0.0050	mg/Kg	EPA 8260B	4/6/2005
Total Xylenes	< 0.0050	0.0050	mg/Kg	EPA 8260B	4/6/2005
Methyl-t-butyl ether (MTBE)	< 0.0050	0.0050	mg/Kg	EPA 8260B	4/6/2005
TPH as Gasoline	< 1.0	1.0	mg/Kg	EPA 8260B	4/6/2005
Toluene - d8 (Surr)	101		%	EPA 8260B	4/6/2005
4-Bromofluorobenzene (Surr)	102		%	EPA 8260B	4/6/2005

<u>Parameter</u>	<u>Measured Value</u>	<u>Method Reporting Limit</u>	<u>Units</u>	<u>Analysis Method</u>	<u>Date Analyzed</u>
------------------	-----------------------	-------------------------------	--------------	------------------------	----------------------

KIFF ANALYTICAL, LLC

2795 2nd St, Suite 300 Davis, CA 95616 530-297-4800

Approved By:  Joel Kiff

QC Report : Matrix Spike/ Matrix Spike Duplicate

Project Name : 29 Wildwood Avenue,

Project Number : 207-0687-001

Parameter	Spiked Sample	Sample Value	Spike Level	Spike Dup. Level	Spiked Sample Value	Duplicate Spiked Sample Value	Units	Analysis Method	Date Analyzed	Spiked Sample Percent Recov.	Duplicate Spiked Sample Percent Recov.	Relative Percent Diff.	Spiked Sample Percent Recov. Limit	Relative Percent Diff. Limit
Benzene	43126-02	<0.0050	0.0367	0.0382	0.0321	0.0321	mg/Kg	EPA 8260B	4/6/05	87.6	83.9	4.24	70-130	25
Toluene	43126-02	<0.0050	0.0367	0.0382	0.0311	0.0287	mg/Kg	EPA 8260B	4/6/05	84.9	75.0	12.3	70-130	25
Tert-Butanol	43126-02	0.11	0.183	0.191	0.258	0.272	mg/Kg	EPA 8260B	4/6/05	82.6	86.6	4.69	70-130	25
Methyl-t-Butyl Ether	43126-02	<0.0050	0.0367	0.0382	0.0327	0.0332	mg/Kg	EPA 8260B	4/6/05	89.1	86.8	2.66	70-130	25
TPH as Diesel	43129-01	1.1	20.0	20.0	19.7	20.0	mg/Kg	M EPA 8015	4/6/05	93.6	94.8	1.30	60-140	25

Approved By:  Joel Kiff

KIFF ANALYTICAL, LLC

2795 2nd St, Suite 300 Davis, CA 95616 530-297-4800

Report Number : 43126

Date : 4/8/2005

QC Report : Laboratory Control Sample (LCS)

Project Name : **29 Wildwood Avenue,**

Project Number : **207-0687-001**

Parameter	Spike Level	Units	Analysis Method	Date Analyzed	LCS Percent Recov.	LCS Percent Recov. Limit
Benzene	0.0377	mg/Kg	EPA 8260B	4/6/05	95.8	70-130
Toluene	0.0377	mg/Kg	EPA 8260B	4/6/05	103	70-130
Tert-Butanol	0.189	mg/Kg	EPA 8260B	4/6/05	95.7	70-130
Methyl-t-Butyl Ether	0.0377	mg/Kg	EPA 8260B	4/6/05	91.0	70-130
TPH as Diesel	20.0	mg/Kg	M EPA 8015	4/6/05	103	70-130

KIFF ANALYTICAL, LLC

2795 2nd St, Suite 300 Davis, CA 95616 530-297-4800

Approved By:

Joel Kiff



SHELL Chain Of Custody Record

43126

720 Olive Drive, Suite D

Davis, CA 95616

(530) 297-4800 (530) 297-4803 fax

Shell Project Manager to be Invoiced:

- SCIENCE & ENGINEERING
- TECHNICAL SERVICES
- CRMT HOUSTON

Jeff Miller

INCIDENT NUMBER (S&E ONLY)

SAP/CRMT NUMBER (S/CRMT)

1 3 5 7 6 5

DATE: 4/5/05

PAGE: 1 of 1

SAMPLING COMPANY: Cambria Environmental		LOG CODE: CETO	SITE ADDRESS (Street and City): 29 Wildwood Avenue, Piedmont, CA		GLOBAL ID NO.: T0600101246
ADDRESS: 5900 Hollis Street, Suite A, Emeryville, CA 94608		EDF DELIVERABLE TO (Responsible Party or Designee): shelloaklandedf@cambria-env.com		PHONE NO.:	E-MAIL:
PROJECT CONTACT (Hardcopy or PDF Report to): Martin Wills		SAMPLER NAME(S) Andy Ellsmore		CONSULTANT PROJECT NO.: 207-0687-001	
TELEPHONE: 510-420-3342	FAX: 510-420-9170	E-MAIL: mwills@cambria-env.com		LAB USE ONLY	

TURNAROUND TIME (BUSINESS DAYS):
 10 DAYS 5 DAYS 72 HOURS 48 HOURS 24 HOURS LESS THAN 24 HOURS

LA - RWQCB REPORT FORMAT UST AGENCY:

GC/MS MTBE CONFIRMATION: HIGHEST _____ HIGHEST per BORING _____ ALL _____

SPECIAL INSTRUCTIONS OR NOTES: CHECK BOX IF EDD IS NOT NEEDED

cc: asellsmore@cambria-env.com

REQUESTED ANALYSIS

LAB USE ONLY	Field Sample Identification	SAMPLING		MATRIX	NO. OF CONT.	TPH - Gas, Purgeable	BTEX	MTBE (8021B - 5ppb RL)	MTBE (8260B - 0.5ppb RL)	Oxygenates (5) by (8260B)	Ethanol (8260B)	Methanol	EDB & 1,2-DCA (8260B)	EPA 5035 Extraction for Volatiles	VOCs Halogenated/Aromatic (8021B)	TRPH (418.1)	Vapor VOCs BTEX / MTBE (TO-15)	Vapor VOCs Full List (TO-15)	Vapor TPH (ASTM 3416m)	Vapor Fixed Gases (ASTM D1946)	Test for Disposal (4B-)	TPH - Diesel, Extractable (8015m)	MTBE (8260B) Confirmation, See Note	FIELD NOTES: Container/Preservative or PID Readings or Laboratory Notes
		DATE	TIME																					
✓	D-1-3.0	4/5/05	14:30	Soil	1	X	X	X																ON ICE
✓	D-2-3.0	4/5/05	15:15	Soil	1	X	X	X																TEMPERATURE ON RECEIPT °

Relinquished by: (Signature)	Received by: (Signature)	Date: 4/5/05	Time: 16:30
Relinquished by: (Signature)	Received by: (Signature)	Date: 4/6/05	Time: 9:20
Relinquished by: (Signature)	Received by: (Signature)	Date: 04/06/05	Time: 0920

C&C Graphic (714) 855-9702

Cambria Environmental Emeryville

May 09, 2005

5900 Hollis Street, Ste. A
Emeryville, CA 94608

Attn.: Martin Wills

Project#: 207-0687-001

Project: SAP #135765

Site: 29 Wildwood Avenue, Piedmont, CA

Attached is our report for your samples received on 04/29/2005 12:25

This report has been reviewed and approved for release. Reproduction of this report is permitted only in its entirety.

Please note that any unused portion of the samples will be discarded after 06/13/2005 unless you have requested otherwise.

We appreciate the opportunity to be of service to you. If you have any questions,

You can also contact me via email. My email address is: mbrewer@stl-inc.com

Sincerely,



Melissa Brewer
Project Manager

Severn Trent Laboratories, Inc.

STL San Francisco * 1220 Quarry Lane, Pleasanton, CA 94566

Tel 925 484 1919 Fax 925 484 1096 * www.stl-inc.com * CA DHS ELAP# 2496

Gas/BTEX/MTBE by 8260B (C6-C12)

Cambria Environmental Emeryville

Attn.: Martin Wills

5900 Hollis Street, Ste. A

Emeryville, CA 94608

Phone: (510) 420-3342 Fax: (510) 420-9170

Project: 207-0687-001

SAP #135765

Received: 04/29/2005 12:25

Site: 29 Wildwood Avenue, Piedmont, CA

Samples Reported

Sample Name	Date Sampled	Matrix	Lab #
P-1-5	04/29/2005 10:30	Soil	1

Severn Trent Laboratories, Inc.

STL San Francisco * 1220 Quarry Lane, Pleasanton, CA 94566

Tel 925 484 1919 Fax 925 484 1096 * www.stl-inc.com * CA DHS ELAP# 2496

05/06/2005 18:01

Gas/BTEX/MTBE by 8260B (C6-C12)

Cambria Environmental Emeryville

Attn.: Martin Wills

5900 Hollis Street, Ste. A

Emeryville, CA 94608

Phone: (510) 420-3342 Fax: (510) 420-9170

Project: 207-0687-001

SAP #135765

Received: 04/29/2005 12:25

Site: 29 Wildwood Avenue, Piedmont, CA

Prep(s):	5030B	Test(s):	8260B
Sample ID:	P-1-5	Lab ID:	2005-04-0896 - 1
Sampled:	04/29/2005 10:30	Extracted:	5/6/2005 03:10
Matrix:	Soil	QC Batch#:	2005/05/05-2C.69

Compound	Conc.	RL	Unit	Dilution	Analyzed	Flag
Gasoline [Shell]	ND	1.0	mg/Kg	1.00	05/06/2005 03:10	
Benzene	ND	0.0050	mg/Kg	1.00	05/06/2005 03:10	
Toluene	ND	0.0050	mg/Kg	1.00	05/06/2005 03:10	
Ethyl benzene	ND	0.0050	mg/Kg	1.00	05/06/2005 03:10	
Total xylenes	ND	0.0050	mg/Kg	1.00	05/06/2005 03:10	
Methyl tert-butyl ether (MTBE)	ND	0.0050	mg/Kg	1.00	05/06/2005 03:10	
Surrogate(s)						
1,2-Dichloroethane-d4	98.1	42-124	%	1.00	05/06/2005 03:10	
Toluene-d8	115.1	75-116	%	1.00	05/06/2005 03:10	

Severn Trent Laboratories, Inc.

STL San Francisco * 1220 Quarry Lane, Pleasanton, CA 94566

Tel 925 484 1919 Fax 925 484 1096 * www.stl-inc.com * CA DHS ELAP# 2496

05/06/2005 18:01

Gas/BTEX/MTBE by 8260B (C6-C12)

Cambria Environmental Emeryville

Attn.: Martin Wills

5900 Hollis Street, Ste. A

Emeryville, CA 94608

Phone: (510) 420-3342 Fax: (510) 420-9170

Project: 207-0687-001

SAP #135765

Received: 04/29/2005 12:25

Site: 29 Wildwood Avenue, Piedmont, CA

Batch QC Report			
Prep(s): 5030B			Test(s): 8260B
Method Blank	Soil		QC Batch # 2005/05/05-2C.69
MB: 2005/05/05-2C.69-049			Date Extracted: 05/05/2005 18:49

Compound	Conc.	RL	Unit	Analyzed	Flag
Gasoline [Shell]	ND	1.0	mg/Kg	05/05/2005 18:49	
Methyl tert-butyl ether (MTBE)	ND	0.0050	mg/Kg	05/05/2005 18:49	
Benzene	ND	0.0050	mg/Kg	05/05/2005 18:49	
Toluene	ND	0.0050	mg/Kg	05/05/2005 18:49	
Ethyl benzene	ND	0.0050	mg/Kg	05/05/2005 18:49	
Total xylenes	ND	0.0050	mg/Kg	05/05/2005 18:49	
Surrogates(s)					
1,2-Dichloroethane-d4	94.4	42-124	%	05/05/2005 18:49	
Toluene-d8	102.4	75-116	%	05/05/2005 18:49	

Gas/BTEX/MTBE by 8260B (C6-C12)

Cambria Environmental Emeryville

Attn.: Martin Wills

5900 Hollis Street, Ste. A

Emeryville, CA 94608

Phone: (510) 420-3342 Fax: (510) 420-9170

Project: 207-0687-001

SAP #135765

Received: 04/29/2005 12:25

Site: 29 Wildwood Avenue, Piedmont, CA

Batch QC Report									
Prep(s): 5030B					Test(s): 8260B				
Laboratory Control Spike			Soil			QC Batch # 2005/05/05-2C.69			
LCS		2005/05/05-2C.69-058		Extracted: 05/05/2005		Analyzed: 05/05/2005 17:58			
LCSD									

Compound	Conc. mg/Kg		Exp.Conc.	Recovery %		RPD	Ctrl.Limits %		Flags	
	LCS	LCSD		LCS	LCSD		%	Rec.	RPD	LCS
Methyl tert-butyl ether (MTBE)	0.0524		0.05	104.8			65-165	20		
Benzene	0.0518		0.05	103.6			69-129	20		
Toluene	0.0527		0.05	105.4			70-130	20		
Surrogates(s)										
1,2-Dichloroethane-d4	475		500	95.0			42-124			
Toluene-d8	556		500	111.2			75-116			

Severn Trent Laboratories, Inc.

STL San Francisco * 1220 Quarry Lane, Pleasanton, CA 94566

Tel 925 484 1919 Fax 925 484 1096 * www.stl-inc.com * CA DHS ELAP# 2496

05/06/2005 18:01

Gas/BTEX/MTBE by 8260B (C6-C12)

Cambria Environmental Emeryville

Attn.: Martin Wills

5900 Hollis Street, Ste. A

Emeryville, CA 94608

Phone: (510) 420-3342 Fax: (510) 420-9170

Project: 207-0687-001

SAP #135765

Received: 04/29/2005 12:25

Site: 29 Wildwood Avenue, Piedmont, CA

Batch QC Report			
Prep(s):	5030B	Test(s):	8260B
Matrix Spike (MS / MSD)		Soil	QC Batch # 2005/05/05-2C.69
MS/MSD		Lab ID:	2005-04-0752 - 014
MS:	2005/05/05-2C.69-041	Extracted:	05/05/2005
		Analyzed:	05/05/2005 19:41
		Dilution:	1.00
MSD:	2005/05/05-2C.69-054	Extracted:	05/05/2005
		Analyzed:	05/05/2005 20:00
		Dilution:	1.00

Compound	Conc. mg/Kg			Spk.Level mg/Kg	Recovery %			Limits %		Flags	
	MS	MSD	Sample		MS	MSD	RPD	Rec.	RPD	MS	MSD
Methyl tert-butyl ether	0.0356	0.0358	ND	0.045955	77.5	75.6	2.5	65-165	20		
Benzene	0.0386	0.0491	ND	0.045955	84.0	103.7	21.0	69-129	20		R1
Toluene	0.0401	0.0466	ND	0.045955	87.3	98.4	12.0	70-130	20		
Surrogate(s)											
1,2-Dichloroethane-d4	451	414		500	90.2	82.8		42-124			
Toluene-d8	523	541		500	104.6	108.2		75-116			

Gas/BTEX/MTBE by 8260B (C6-C12)

Cambria Environmental Emeryville

Attn.: Martin Wills

5900 Hollis Street, Ste. A

Emeryville, CA 94608

Phone: (510) 420-3342 Fax: (510) 420-9170

Project: 207-0687-001

SAP #135765

Received: 04/29/2005 12:25

Site: 29 Wildwood Avenue, Piedmont, CA

Legend and Notes

Result Flag

R1

Analyte RPD was out of QC limits.

Gas/BTEXFuel Oxygenates by 8260B (High Level)

Cambria Environmental Emeryville

Attn.: Martin Wills

5900 Hollis Street, Ste. A

Emeryville, CA 94608

Phone: (510) 420-3342 Fax: (510) 420-9170

Project: 207-0687-001

SAP #135765

Received: 04/29/2005 12:25

Site: 29 Wildwood Avenue, Piedmont, CA

Samples Reported

Sample Name	Date Sampled	Matrix	Lab #
P-2-5	04/29/2005 10:45	Soil	2
P-3-5	04/29/2005 11:30	Soil	3

Severn Trent Laboratories, Inc.

STL San Francisco * 1220 Quarry Lane, Pleasanton, CA 94566

Tel 925 484 1919 Fax 925 484 1096 * www.stl-inc.com * CA DHS ELAP# 2496

05/09/2005 10:42

Gas/BTEXFuel Oxygenates by 8260B (High Level)

Cambria Environmental Emeryville

Attn.: Martin Wills

5900 Hollis Street, Ste. A

Emeryville, CA 94608

Phone: (510) 420-3342 Fax: (510) 420-9170

Project: 207-0687-001

SAP #135765

Received: 04/29/2005 12:25

Site: 29 Wildwood Avenue, Piedmont, CA

Prep(s): 5030B	Test(s): 8260B
Sample ID: P-2-5	Lab ID: 2005-04-0896 -2
Sampled: 04/29/2005 10:45	Extracted: 5/6/2005 01:32
Matrix: Soil	QC Batch#: 2005/05/04-3B.69
Analysis Flag: L2 (See Legend and Note Section)	

Compound	Conc.	RL	Unit	Dilution	Analyzed	Flag
Gasoline [Shell]	610	50	mg/Kg	1.00	05/06/2005 01:32	Q1
Benzene	ND	0.50	mg/Kg	1.00	05/06/2005 01:32	
Toluene	ND	0.50	mg/Kg	1.00	05/06/2005 01:32	
Ethyl benzene	7.8	0.50	mg/Kg	1.00	05/06/2005 01:32	
Total xylenes	ND	0.50	mg/Kg	1.00	05/06/2005 01:32	
Methyl tert-butyl ether (MTBE)	ND	0.50	mg/Kg	1.00	05/06/2005 01:32	
Surrogate(s)						
1,2-Dichloroethane-d4	103.4	53-129	%	1.00	05/06/2005 01:32	
Toluene-d8	105.4	47-136	%	1.00	05/06/2005 01:32	

Gas/BTEXFuel Oxygenates by 8260B (High Level)

Cambria Environmental Emeryville

Attn.: Martin Wills

5900 Hollis Street, Ste. A
Emeryville, CA 94608
Phone: (510) 420-3342 Fax: (510) 420-9170

Project: 207-0687-001
SAP #135765

Received: 04/29/2005 12:25

Site: 29 Wildwood Avenue, Piedmont, CA

Prep(s): 5030B	Test(s): 8260B
Sample ID: P-3-5	Lab ID: 2005-04-0896 - 3
Sampled: 04/29/2005 11:30	Extracted: 5/6/2005 01:52
Matrix: Soil	QC Batch#: 2005/05/04-3B.69
Analysis Flag: L2 (See Legend and Note Section)	

Compound	Conc.	RL	Unit	Dilution	Analyzed	Flag
Gasoline [Shell]	51	50	mg/Kg	1.00	05/06/2005 01:52	Q1
Benzene	ND	0.50	mg/Kg	1.00	05/06/2005 01:52	
Toluene	ND	0.50	mg/Kg	1.00	05/06/2005 01:52	
Ethyl benzene	ND	0.50	mg/Kg	1.00	05/06/2005 01:52	
Total xylenes	ND	0.50	mg/Kg	1.00	05/06/2005 01:52	
Methyl tert-butyl ether (MTBE)	ND	0.50	mg/Kg	1.00	05/06/2005 01:52	
Surrogate(s)						
1,2-Dichloroethane-d4	94.1	53-129	%	200.00	05/06/2005 01:52	
Toluene-d8	106.3	47-136	%	200.00	05/06/2005 01:52	

Gas/BTEXFuel Oxygenates by 8260B (High Level)

Cambria Environmental Emeryville

Attn.: Martin Wills

5900 Hollis Street, Ste. A

Emeryville, CA 94608

Phone: (510) 420-3342 Fax: (510) 420-9170

Project: 207-0687-001

SAP #135765

Received: 04/29/2005 12:25

Site: 29 Wildwood Avenue, Piedmont, CA

Batch QC Report

Prep(s): 5030B

Method Blank

MB: 2005/05/04-3B.69-037

Soil

Test(s): 8260B

QC Batch # 2005/05/04-3B.69

Date Extracted: 05/04/2005 14:37

Compound	Conc.	RL	Unit	Analyzed	Flag
Gasoline [Shell]	ND	50	mg/Kg	05/04/2005 14:37	
Benzene	ND	0.50	mg/Kg	05/04/2005 14:37	
Toluene	ND	0.50	mg/Kg	05/04/2005 14:37	
Ethyl benzene	ND	0.50	mg/Kg	05/04/2005 14:37	
Total xylenes	ND	0.50	mg/Kg	05/04/2005 14:37	
Methyl tert-butyl ether (MTBE)	ND	0.50	mg/Kg	05/04/2005 14:37	
Surrogates(s)					
1,2-Dichloroethane-d4	98.0	53-129	%	05/04/2005 14:37	
Toluene-d8	113.6	47-136	%	05/04/2005 14:37	

Gas/BTEX Fuel Oxygenates by 8260B (High Level)

Cambria Environmental Emeryville

Attn.: Martin Wills

5900 Hollis Street, Ste. A

Emeryville, CA 94608

Phone: (510) 420-3342 Fax: (510) 420-9170

Project: 207-0687-001

SAP #135765

Received: 04/29/2005 12:25

Site: 29 Wildwood Avenue, Piedmont, CA

Batch QC Report

Prep(s): 5030B

Test(s): 8260B

Laboratory Control Spike

Soil

QC Batch # 2005/05/04-3B.69

LCS 2005/05/04-3B.69-057

Extracted: 05/04/2005

Analyzed: 05/04/2005 13:57

LCSD 2005/05/04-3B.69-017

Extracted: 05/04/2005

Analyzed: 05/04/2005 14:17

Compound	Conc. mg/Kg		Exp. Conc.	Recovery %		RPD	Ctrl. Limits %		Flags	
	LCS	LCSD		LCS	LCSD		%	Rec.	RPD	LCS
Benzene	9.48	10.3	10	94.8	103.0	8.3	69-129	20		
Toluene	9.47	9.72	10	94.7	97.2	2.6	70-130	20		
Methyl tert-butyl ether (MTBE)	8.25	9.75	10	82.5	97.5	16.7	65-165	20		
Surrogates(s)										
1,2-Dichloroethane-d4	237	252	250	94.8	100.8		53-129			
Toluene-d8	259	274	250	103.6	109.6		47-136			

Severn Trent Laboratories, Inc.

STL San Francisco * 1220 Quarry Lane, Pleasanton, CA 94566

Tel 925 484 1919 Fax 925 484 1096 * www.stl-inc.com * CA DHS ELAP# 2496

05/09/2005 10:42

Gas/BTEXFuel Oxygenates by 8260B (High Level)

Cambria Environmental Emeryville

Attn.: Martin Wills

5900 Hollis Street, Ste. A

Emeryville, CA 94608

Phone: (510) 420-3342 Fax: (510) 420-9170

Project: 207-0687-001

SAP #135765

Received: 04/29/2005 12:25

Site: 29 Wildwood Avenue, Piedmont, CA

Legend and Notes

Analysis Flag

L2

Reporting limits were raised due to high level of analyte present in the sample.

Result Flag

Q1

Quantit. of unknown hydrocarbon(s) in sample based on gasoline.

114649

720 Olive Drive, Suite D
Davis, CA 95616

Shell Project Manager to be invoiced:
2005-04-0896
John Miller Bill Merchant

INCIDENT NUMBER (S&E ONLY)

SAP or CRMT NUMBER (TS/CRMT)

DATE: 4/29/05

PAGE: 1 of 1

(530) 297-4800 (530) 297-4803 fax

Cambria Environmental
5900 Hollis Street, Suite A, Emeryville, CA 94608

Martin Wills
510-420-9942
510-420-9170
mwills@cambria-env.com

CETO

29 Wildwood Avenue, Piedmont, CA

shelloaklandceti@cambria-env.com

Apply Etomaze Stu Decker

T0600101246

307-0687-001

TURNAROUND TIME (BUSINESS DAYS):
 1 DAY 5 DAYS 7 HOURS 48 HOURS 24 HOURS LESS THAN 24 HOURS

LA - RWQCB REPORT FORMAT UST AGENCY

GCMS MTRB CONFIRMATION HIGHEST _____ HIGHEST per BORING _____ ALL _____

SPECIAL INSTRUCTIONS OR NOTES: CHECK BOX IF EDO IS NOT NEEDED

cc: jmill@cambr-enu.com
mwills

REQUESTED ANALYSIS

LAB USE ONLY	Field Sample Identification	SAMPLING		MATRIX	NO. OF CONT.	TPH - Gas, Purgeable (8260)	BTEX	MTBE (80218 - 5ppb RL) (8260)	MTBE (8260B - 0.5ppb RL)	Oxydantes (8) by (8260B)	Ethanol (8260B)	Methanol	EDB & 1,2-DCA (8360)	EPA 505 Extraction for Volatiles	VOCs Halogenated/Aromatic (8021B)	TRPH (418.1)	Vapor VOCs BTEX / MTBE (TO-15)	Vapor VOCs Full List (TO-15)	Vapor TPH (ASTM 3475m)	Vapor Fixed Gases (ASTM D1946)	Test for Disposal (4B)	TPH - Diesel Extractable (8615m)	MTBE (8260B) Confirmation, See Note	TEMPERATURE OR RECOVERY	FIELD NOTES: Container/Preservative or PID Readings or Laboratory Notes	
		DATE	TIME																							
	P-1-5	4/29/05	10:30	Soil	1	X	X	X																	17	ON ICE
	P-2-5	1	10:45		1	X	X	X																		
	P-3-5	1	11:30		1	X	X	X																		

Released by: (Signature) [Signature]

Received by: (Signature) [Signature]

Date: 4/29/05

Time: 13:58

Released by: (Signature) [Signature]

Received by: (Signature) [Signature]

Date: 4/29/05

Time: 12:25

Released by: (Signature) [Signature]

Received by: (Signature) [Signature]

Date: 4/29/05

Time: 13:58

Soil Disposal Analytical Results

Cambria Environmental Emeryville

May 03, 2005

5900 Hollis Street, Ste. A
Emeryville, CA 94608

Attn.: Martin Wills

Project#: 207-0687-001

Project: Shell SAP Number 135765

Site: 29 Wildwood Avenue, Piedmont, CA

Attached is our report for your samples received on 04/29/2005 12:25


This report has been reviewed and approved for release. Reproduction of this report is permitted only in its entirety.

Please note that any unused portion of the samples will be discarded after 06/13/2005 unless you have requested otherwise.

We appreciate the opportunity to be of service to you. If you have any questions,

You can also contact me via email. My email address is: mbrewer@stl-inc.com

Sincerely,



Melissa Brewer
Project Manager

Severn Trent Laboratories, Inc.

STL San Francisco * 1220 Quarry Lane, Pleasanton, CA 94566

Tel 925 484 1919 Fax 925 484 1096 * www.stl-inc.com * CA DHS ELAP# 2496

Gas/BTEX Fuel Oxygenates by 8260B (C6-C12)

Cambria Environmental Emeryville

Attn.: Martin Wills

5900 Hollis Street, Ste. A

Emeryville, CA 94608

Phone: (510) 420-3342 Fax: (510) 420-9170

Project: 207-0687-001

Shell SAP Number 135765

Received: 04/29/2005 12:25

Site: 29 Wildwood Avenue, Piedmont, CA

Samples Reported

Sample Name	Date Sampled	Matrix	Lab #
SP-1	04/29/2005 12:30	Soil	1

Severn Trent Laboratories, Inc.

STL San Francisco * 1220 Quarry Lane, Pleasanton, CA 94566

Tel 925 484 1919 Fax 925 484 1096 * www.stl-inc.com * CA DHS ELAP# 2496

05/02/2005 16:03

Gas/BTEX Fuel Oxygenates by 8260B (C6-C12)

Cambria Environmental Emeryville

Attn.: Martin Wills

5900 Hollis Street, Ste. A

Emeryville, CA 94608

Phone: (510) 420-3342 Fax: (510) 420-9170

Project: 207-0687-001

Shell SAP Number 135765

Received: 04/29/2005 12:25

Site: 29 Wildwood Avenue, Piedmont, CA

Prep(s): 5030B	Test(s): 8260B
Sample ID: SP-1	Lab ID: 2005-04-0880 - 1
Sampled: 04/29/2005 12:30	Extracted: 5/1/2005 19:19
Matrix: Soil	QC Batch#: 2005/05/01-2A.69
Analysis Flag: L2 (See Legend and Note Section)	

Compound	Conc.	RL	Unit	Dilution	Analyzed	Flag
Gasoline [Shell]	30	4.7	mg/Kg	4.67	05/01/2005 19:19	Q1
Benzene	ND	0.023	mg/Kg	4.67	05/01/2005 19:19	
Toluene	ND	0.023	mg/Kg	4.67	05/01/2005 19:19	
Ethyl benzene	ND	0.023	mg/Kg	4.67	05/01/2005 19:19	
Total xylenes	ND	0.023	mg/Kg	4.67	05/01/2005 19:19	
Surrogate(s)						
1,2-Dichloroethane-d4	102.2	76-124	%	4.67	05/01/2005 19:19	
Toluene-d8	91.9	75-116	%	4.67	05/01/2005 19:19	

Gas/BTEX Fuel Oxygenates by 8260B (C6-C12)

Cambria Environmental Emeryville

Attn.: Martin Wills

5900 Hollis Street, Ste. A
Emeryville, CA 94608
Phone: (510) 420-3342 Fax: (510) 420-9170

Project: 207-0687-001
Shell SAP Number 135765

Received: 04/29/2005 12:25

Site: 29 Wildwood Avenue, Piedmont, CA

Batch QC Report			
Prep(s): 5030B			Test(s): 8260B
Method Blank	Soil		QC Batch # 2005/05/01-2A.69
MB: 2005/05/01-2A.69-017			Date Extracted: 05/01/2005 17:17

Compound	Conc.	RL	Unit	Analyzed	Flag
Gasoline [Shell]	ND	1.0	mg/Kg	05/01/2005 17:17	
Benzene	ND	0.0050	mg/Kg	05/01/2005 17:17	
Toluene	ND	0.0050	mg/Kg	05/01/2005 17:17	
Ethyl benzene	ND	0.0050	mg/Kg	05/01/2005 17:17	
Total xylenes	ND	0.0050	mg/Kg	05/01/2005 17:17	
Surrogates(s)					
1,2-Dichloroethane-d4	101.2	76-124	%	05/01/2005 17:17	
Toluene-d8	102.4	75-116	%	05/01/2005 17:17	

Gas/BTEX Fuel Oxygenates by 8260B (C6-C12)

Cambria Environmental Emeryville

Attn.: Martin Wills

5900 Hollis Street, Ste. A

Emeryville, CA 94608

Phone: (510) 420-3342 Fax: (510) 420-9170

Project: 207-0687-001

Shell SAP Number 135765

Received: 04/29/2005 12:25

Site: 29 Wildwood Avenue, Piedmont, CA

Batch QC Report			
Prep(s): 5030B			Test(s): 8260B
Laboratory Control Spike		Soil	QC Batch # 2005/05/01-2A.69
LCS 2005/05/01-2A.69-048		Extracted: 05/01/2005	Analyzed: 05/01/2005 18:48
LCSD			

Compound	Conc. mg/Kg		Exp.Conc.	Recovery %		RPD %	Ctrl.Limits %		Flags	
	LCS	LCSD		LCS	LCSD		Rec.	RPD	LCS	LCSD
Benzene	0.0557		0.05	111.4			69-129	20		
Toluene	0.0600		0.05	120.0			70-130	20		
Surrogates(s)										
1,2-Dichloroethane-d4	484		500	96.8			76-124			
Toluene-d8	464		500	92.8			75-116			

Severn Trent Laboratories, Inc.

STL San Francisco * 1220 Quarry Lane, Pleasanton, CA 94566

Tel 925 484 1919 Fax 925 484 1096 * www.stl-inc.com * CA DHS ELAP# 2496

05/02/2005 16:03

Gas/BTEX Fuel Oxygenates by 8260B (C6-C12)

Cambria Environmental Emeryville

Attn.: Martin Wills

5900 Hollis Street, Ste. A

Emeryville, CA 94608

Phone: (510) 420-3342 Fax: (510) 420-9170

Project: 207-0687-001

Shell SAP Number 135765

Received: 04/29/2005 12:25

Site: 29 Wildwood Avenue, Piedmont, CA

Batch QC Report			
Prep(s):	5030B	Test(s):	8260B
Matrix Spike (MS / MSD)		Soil	QC Batch # 2005/05/01-2A.69
MS/MSD		Lab ID:	2005-04-0707 - 004
MS: 2005/05/01-2A.69-058		Extracted: 05/01/2005	Analyzed: 05/01/2005 19:58
			Dilution: 1.00
MSD: 2005/05/01-2A.69-018		Extracted: 05/01/2005	Analyzed: 05/01/2005 20:18
			Dilution: 1.00

Compound	Conc. mg/Kg			Spk.Level mg/Kg	Recovery %			Limits %		Flags	
	MS	MSD	Sample		MS	MSD	RPD	Rec.	RPD	MS	MSD
Benzene	0.0648	0.0591	ND	0.05	129.6	123.9	4.5	69-129	20	M4	
Toluene	0.0643	0.0648	ND	0.05	128.6	135.8	5.4	70-130	20		M4
Surrogate(s)											
1,2-Dichloroethane-d4	513	475		500	102.6	95.0		76-124			
Toluene-d8	515	544		500	103.0	108.8		75-116			

Severn Trent Laboratories, Inc.

STL San Francisco * 1220 Quarry Lane, Pleasanton, CA 94566

Tel 925 484 1919 Fax 925 484 1096 * www.stl-inc.com * CA DHS ELAP# 2496

05/02/2005 16:03

Gas/BTEX Fuel Oxygenates by 8260B (C6-C12)

Cambria Environmental Emeryville

Attn.: Martin Wills

5900 Hollis Street, Ste. A

Emeryville, CA 94608

Phone: (510) 420-3342 Fax: (510) 420-9170

Project: 207-0687-001

Shell SAP Number 135765

Received: 04/29/2005 12:25

Site: 29 Wildwood Avenue, Piedmont, CA

Legend and Notes

Analysis Flag

L2

Reporting limits were raised due to high level of analyte present in the sample.

Result Flag

M4

MS/MSD spike recoveries were above acceptance limits. See blank spike (LCS).

Q1

Quantit. of unknown hydrocarbon(s) in sample based on gasoline.

Total Lead

Cambria Environmental Emeryville

Attn.: Martin Wills

5900 Hollis Street, Ste. A

Emeryville, CA 94608

Phone: (510) 420-3342 Fax: (510) 420-9170

Project: 207-0687-001

Shell SAP Number 135765

Received: 04/29/2005 12:25

Site: 29 Wildwood Avenue, Piedmont, CA

Samples Reported

Sample Name	Date Sampled	Matrix	Lab #
SP-1	04/29/2005 12:30	Soil	1

Severn Trent Laboratories, Inc.

STL San Francisco * 1220 Quarry Lane, Pleasanton, CA 94566

Tel 925 484 1919 Fax 925 484 1096 * www.stl-inc.com * CA DHS ELAP# 2496

05/02/2005 20:01

Page 1 of 4

Total Lead

Cambria Environmental Emeryville
Attn.: Martin Wills

5900 Hollis Street, Ste. A
Emeryville, CA 94608
Phone: (510) 420-3342 Fax: (510) 420-9170

Project: 207-0687-001
Shell SAP Number 135765

Received: 04/29/2005 12:25

Site: 29 Wildwood Avenue, Piedmont, CA

Prep(s): 3050B	Test(s): 6010B
Sample ID: SP-1	Lab ID: 2005-04-0880 - 1
Sampled: 04/29/2005 12:30	Extracted: 4/29/2005 14:53
Matrix: Soil	QC Batch#: 2005/04/29-05.15

Compound	Conc.	RL	Unit	Dilution	Analyzed	Flag
Lead	11	1.0	mg/Kg	1.00	05/02/2005 14:18	

Total Lead

Cambria Environmental Emeryville

Attn.: Martin Wills

5900 Hollis Street, Ste. A

Emeryville, CA 94608

Phone: (510) 420-3342 Fax: (510) 420-9170

Project: 207-0687-001

Shell SAP Number 135765

Received: 04/29/2005 12:25

Site: 29 Wildwood Avenue, Piedmont, CA

Batch QC Report		
Prep(s): 3050B		Test(s): 6010B
Method Blank	Soil	QC Batch # 2005/04/29-05-15
MB: 2005/04/29-05-15-035		Date Extracted: 04/29/2005 14:53

Compound	Conc.	RL	Unit	Analyzed	Flag
Lead	ND	1.0	mg/Kg	05/02/2005 12:39	

Total Lead

Cambria Environmental Emeryville

Attn.: Martin Wills

5900 Hollis Street, Ste. A

Emeryville, CA 94608

Phone: (510) 420-3342 Fax: (510) 420-9170

Project: 207-0687-001

Shell SAP Number 135765

Received: 04/29/2005 12:25

Site: 29 Wildwood Avenue, Piedmont, CA

Batch QC Report										
Prep(s): 3050B						Test(s): 6010B				
Laboratory Control Spike				Soil			QC Batch # 2005/04/29-05:15			
LCS	2005/04/29-05.15-036			Extracted: 04/29/2005			Analyzed: 05/02/2005 12:42			
LCSD	2005/04/29-05.15-037			Extracted: 04/29/2005			Analyzed: 05/02/2005 12:57			
Compound	Conc. mg/Kg		Exp.Conc.	Recovery %		RPD	Ctrl.Limits %		Flags	
	LCS	LCSD		LCS	LCSD		%	Rec.	RPD	LCS
Lead	104	103	100.0	104.0	103.0	1.0	80-120	20		

SHELL Chain Of Custody Record

114647

720 Oliva Drive, Suite D
Davis, CA 95616

(530) 297-4800 (530) 297-4803 fax

Shell Project Manager to be Invoiced:
 SCIENCE & ENGINEERING
 TECHNICAL SERVICES
 CRM/HOUSTON
2005-04-0880
~~John Miller~~ **Bill Merchant**

INCIDENT NUMBER (S&E ONLY)				
DATE: 4/29/05				
PAGE: 1 of 2				
SAP ID - CRM NUMBER (EXCRM)				
1	3	5	7	6 5

CAMSERIAL NUMBER Cambria Environmental		COI CODE CETO	SITE ADDRESS (Street and City) 29 Wildwood Avenue, Piedmont, CA		GLOBAL ID NO. T0600101246
ADDRESS 5000 Hollis Street, Suite A, Emeryville, CA 94608		M/F (M/FEMALE, F/M MALE) or (F/M) (F/M) or (F/M) (F/M) or (F/M) (F/M)		PHONE NO.	CONTRACT PROJECT NO. 207-0687-001
PROJECT CONTACT (Site occupier or PCF (input to)) Martin Wills		PROJECT CONTACT (Email) shell@oklandedf@cambria-env.com		LAB USE ONLY	
TELEPHONE 510-420-3342	FAX 510-420-9170	EMAIL mwills@cambria-env.com		LAB USE ONLY	

TURNAROUND TIME (BUSINESS DAYS)
 10 DAYS 5 DAYS 72 HOURS 48 HOURS 24 HOURS LESS THAN 24 HOURS

LA - PACCB REPORT FORMAT USE AGENCY:

ODMS MTEB CONFIRMATION: HIGHEST _____ HIGHEST per BORING _____ ALL _____

SPECIAL INSTRUCTIONS OR NOTES: CHECK BOX IF ADD IS NOT NEEDED

cc: awillmore@cambria-env.com
mwills

REQUESTED ANALYSIS												FIELD NOTES: Container/Preservative or PID Readings or Laboratory Notes						
TPH - Gas, Purgeable	BTEX	MTBE (4021A - 5ppb FL)	MTBE (4250B - 0.5ppb FL)	Oxygenates (S) by (4250B)	Ethanol (4250B)	Methanol	EDB & 1,2-DCA (4250B)	EPA 5035 Extraction for Volatiles	VOCs Halogenated/Aromatic (4021B)	TRPH (414.1)	Vapor VOCs: BTEX / MTBE (TO-15)		Vapor VOCs: Full List (TO-15)	Vapor TPH (ASTM 9416m)	Vapor Fined Gases (ASTM D1945)	Test for Disposal (see sheet)	TPH - Diesel, Extractable (4015m)	MTBE (4200B) Confirmation, See Note
																		ON ICE
																		TEMPERATURE ON RECEIPT OF

LAB USE ONLY	Field Sample Identification	SAMPLING		MATRIX	NO. OF CONT.	TPH	BTEX	MTBE (4021A - 5ppb FL)	MTBE (4250B - 0.5ppb FL)	Oxygenates (S) by (4250B)	Ethanol (4250B)	Methanol	EDB & 1,2-DCA (4250B)	EPA 5035 Extraction for Volatiles	VOCs Halogenated/Aromatic (4021B)	TRPH (414.1)	Vapor VOCs: BTEX / MTBE (TO-15)	Vapor VOCs: Full List (TO-15)	Vapor TPH (ASTM 9416m)	Vapor Fined Gases (ASTM D1945)	Test for Disposal (see sheet)	TPH - Diesel, Extractable (4015m)	MTBE (4200B) Confirmation, See Note	TEMPERATURE ON RECEIPT OF
		DATE	TIME																					
	SP-1A	4/29/05	12:30	Soil	1	X	X																	14
	SP-1B	↓	↓	↓	↓	X	X																	SP-1
	SP-1C	↓	↓	↓	↓	X	X																	SP-1
	SP-1D	↓	↓	↓	↓	X	X																	SP-1

Requested by (Signature) <i>[Signature]</i>	Received by (Signature) <i>[Signature]</i>	Date 4/29/05	Time 12:25
Requested by (Signature) <i>[Signature]</i>	Received by (Signature) <i>[Signature]</i>	Date 4/29/05	Time 13:58

This information is business proprietary and confidential and must not be divulged or shared outside the company. The use of this information is strictly for the purpose of doing business with the Centralized Residual Management Team (CRMT). Upon termination of the relationship with the CRMT, this information is not to be forwarded, duplicated, shared or used for any purpose other than for the documentation of past actions.

RESIDUAL MANAGEMENT PROCEDURE

ISSUED DATE: 08/01/01
CANCELS ISSUE:
ISSUED BY: LRR

RESIDUAL STREAM: SOIL WITH UNLEADED GASOLINE
VENDOR: ALLIED-BFI
LOCATION: ALLIED WASTE - MANTECA
9999 SOUTH AUSTIN ROAD
MANTECA, CA. 95336

CALIFORNIA - TRANSPORTATION AND RETAIL

BTEX - EPA 8021B/8260B (IF BENZENE IS > OR = TO 10 MG/KG THEN TCLP BENZENE IS REQUIRED)

CAM METALS = TTLC METALS - LEAD ONLY

STLC ON ALL TTLC METALS 10 TIMES STLC MAXIMUM

TTLC LEAD => 13 MG/KG REQUIRES ORGANIC LEAD ANALYSIS

IF ANY TTLC TOTAL METAL IS > OR = TO 20 TIMES TCLP REGULATORY LEVELS, TCLP IS REQUIRED

TOTAL PETROLEUM HYDROCARBONS, METHOD 418.1 OR 8015 - GASOLINE

~~418.1 METHOD 8260B (GC/MS)~~

AQUATIC BIOASSAY (FISH TOX) IS ONLY TO BE RUN ON SAMPLES > OR = TO 5000 PPM TPH. AQUATIC BIOASSAY (FISH TOX) = PART 800 OF STANDARD METHODS FOR THE EXAMINATION OF WATER AND WASTEWATER (15TH EDITION)

LABORATORY INSTRUCTIONS (MINIMUM GUIDELINES ONLY)

-ALTERNATE APPROVED TEST METHODS PER SW846 ARE ALSO ACCEPTABLE

-ALL REQUIRED TESTS ON COMPOSITE (MAX 4:1)

-LABORATORY IS TO SUPPLY QA/QC INFORMATION WITH ALL ANALYTICAL REPORTS

~~-MAIL OR FAX ALL ANALYSIS TO THE CENTRALIZED RESIDUAL MANAGEMENT TEAM~~

PROCEDURE ORIGINAL DATE: 08/01/01
PROCEDURE REVISED DATE: 08/01/01

2005-04-0880

ATTACHMENT C

Soil Stockpile Disposal Documentation



Hazardous Waste Hauler (Registration #2843)

8896 Elder Creek Rd. • Sacramento, CA 95828 • FAX (916) 381-1573

Disposal Confirmation

Request for Transportation Received: 05/03/05

Consultant Information

Company: Cambria
 Contact: Ron Barone
 Phone: 510-420-3308
 Fax: 510-420-9170

Site Information

Station #: _____
 Street Address: 29 Wildwood Ave.
 City, State, ZIP: Piedmont, Ca

Customer: Shell Oil Company
 RIPR #: 44423
 SAP # / Location: 135765
 Incident #: NA
 Location / WIC #: NA
 Environmental Engineer: Bill Merchant
 RESA-0023-LDC

Material Description: Soil
 Estimated Quantity: 50 cy
 Service Requested Date: ASAP

Disposal Facility: Forward Landfill
 Contact: Scott
 Phone: 800 204-4242
 Approval #: 5474
 Date of Disposal: 05/13/05
 Actual Tonnage: 46.65 TONS

Transporter: Manley & Sons Trucking, Inc.
 Contact: Alayna A Rowe
 Phone: 916 381-6864
 Fax: 916 381-1573
 Invoice: 200505-18
 Date of Invoice: 05/17/05