



ENVIRONMENTAL HEALTH SERVICES
ENVIRONMENTAL PROTECTION
1131 Harbor Bay Parkway, Suite 250
Alameda, CA 94502-6577
(510) 567-6700
FAX (510) 337-9335

NOTIFICATION OF POTENTIAL CASE CLOSURE
SHELL#13-5692
April 16, 2013

Site Location: 610 Market Street, Oakland, CA 94607
Fuel Leak Case RO0000493 and GeoTracker Global ID T0600102121

Summary – This fact sheet has been prepared to inform community members and other interested parties of potential case closure for a fuel leak case at the Shell-branded service station located at 610 Market Street in Oakland, California (see attached aerial photograph on back). Currently, the station includes a kiosk, three gasoline underground storage tanks (USTs), two dispenser islands, and a car wash. Surrounding land use is mixed residential and commercial.

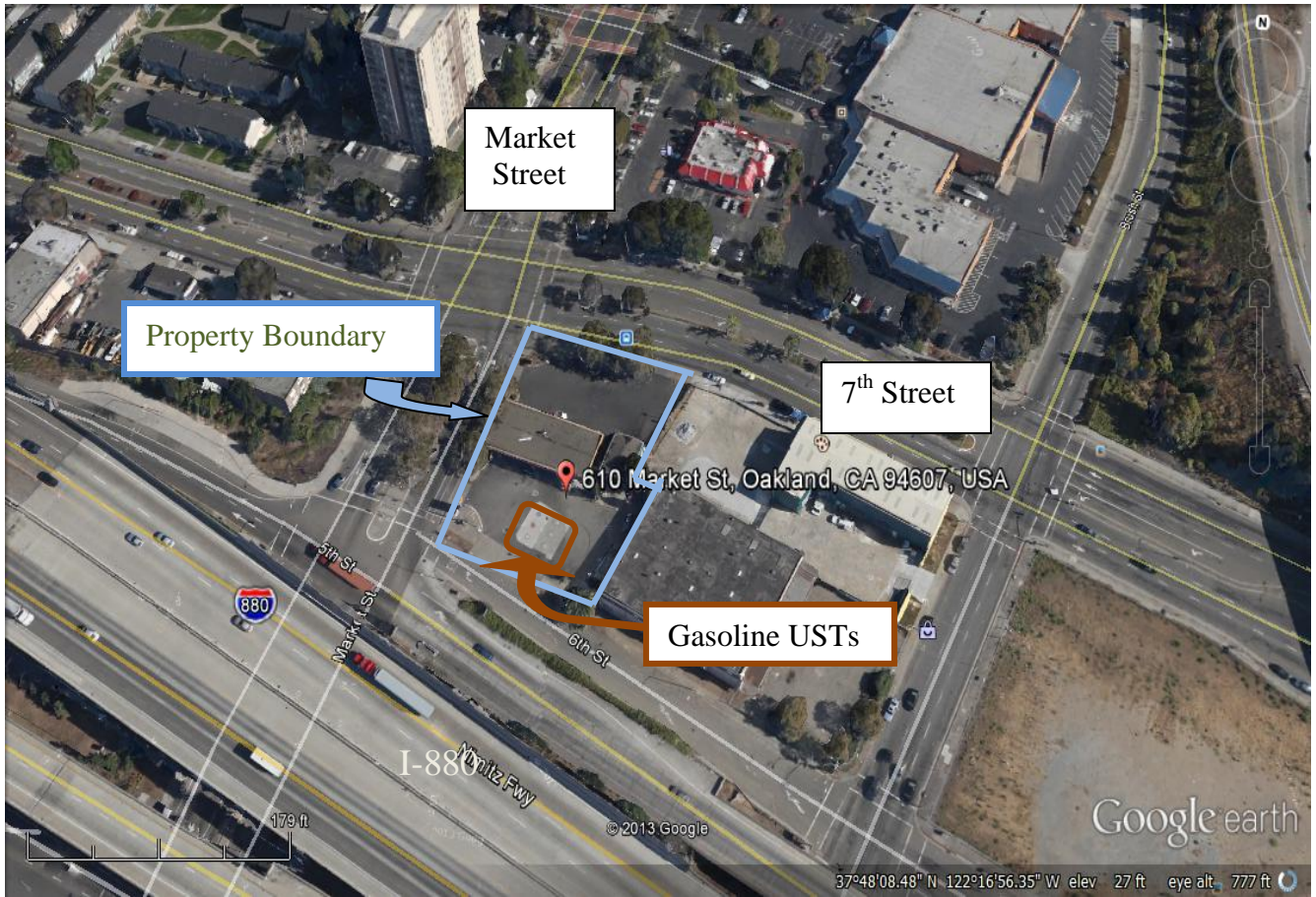
Petroleum hydrocarbons were first detected at the site during the replacement of gasoline dispensers and associated piping in 1995. Soil samples collected during the dispenser and piping replacement contained up to 2,700 parts per million (ppm) total petroleum hydrocarbons as gasoline (TPHg) and 0.7 ppm benzene. Approximately 48 cubic yards of petroleum-impacted soil was excavated and removed from the site during and following the dispenser and piping upgrades.

Site investigation activities to define the extent of petroleum hydrocarbons in soil and groundwater have included the advancement of six exploratory soil borings and installation of nine groundwater monitoring wells. Mobile dual-phase extraction (DPE) and groundwater extraction were conducted from March 2000 to January 2003. Pilot tests of DPE and soil vapor extraction were performed in 2001. A groundwater extraction system operated at the site from February 2003 to November 2006. The groundwater extraction system removed approximately 2,228,010 gallons of water that contained an estimated 48 pounds of TPHg and 140 pounds of MTBE. Groundwater monitoring was conducted at the site from December 1998 through December 2012.

The soil and groundwater data indicate that a plume containing tert butyl alcohol (TBA) and other dissolved petroleum hydrocarbons likely extends from the Shell site southwest beneath 6th Street. However, the highest concentrations of petroleum hydrocarbons and fuel oxygenates in soil and groundwater remain on site. The plume appears to be shrinking in size and residual petroleum hydrocarbons in soil and groundwater are expected to biodegrade over time. The site has been evaluated in accordance with the State Water Resources Control Board Low-Threat Closure Policy. Site investigation and cleanup activities have been completed and it does not appear that the fuel release presents a risk to human health for nearby residents or site workers. Therefore, ACEH is considering potential closure of the fuel leak case.

Next Step – The public is invited to review and comment on the potential closure of the fuel leak case. The entire case file can be viewed over the Internet on the ACEH website (<http://www.acgov.org/aceh/lop/ust.htm>) or the State of California Water Resources Control Board GeoTracker website (<http://geotracker.swrcb.ca.gov>). Please send written comments to Jerry Wickham at the address below; all comments will be forwarded to the responsible parties. **Comments received by June 20, 2013** will be considered and responded to prior to a final determination on the proposed case closure.

Additional information: Contact Jerry Wickham of the Alameda County Department of Environmental Health, 1131 Harbor Bay Parkway, Alameda, CA 94502 at 510-567-6791 or by email at jerry.wickham@acgov.org



610 Market Street, Oakland, CA (Google, 2013)