



**RECEIVED**  
9:08 am, Aug 21, 2008  
**Alameda County  
Environmental Health**

*Southern California  
Northern California  
Pacific Northwest  
Southwest  
Texas  
Montana*

August 20, 2008  
ERI 201003MM.L34

Mo Mashhoon  
Mash Petroleum, Inc.  
428 13th Street, 10th Floor  
Oakland, California 94612

**SUBJECT** Notification of Schedule Change for Upcoming Environmental Activities  
Former Exxon Service Station 73006  
720 High Street, Oakland, California

Mr. Mashoon:

At the request of ExxonMobil Environmental Services Company, on behalf of ExxonMobil Oil Corporation (ExxonMobil), Environmental Resolutions, Inc. (ERI) is notifying you of a schedule change for upcoming environmental activities at the subject site. As part of the ongoing environmental investigation at the subject site, ERI is advancing three off-site hand-auger soil borings (HA1 through HA3). The proposed boring locations are shown on Plate 1. Work is being performed at the direction of the Alameda County Health Care Services Agency Department of Environmental Health. This work was anticipated to occur August 18 and August 19, 2008. A project orientation meeting and utility mark-out activities were scheduled for August 13, 2008, at 9:00 A.M.

Due to encroachment permitting delays, field activities have been rescheduled and will occur August 28 and 29, 2008. A project orientation meeting and utility mark-out activities are scheduled for August 21, 2008.

Soil cuttings and rinsate water from drilling activities will be placed in 55-gallon drums and stored at the site pending characterization and disposal. Upon receipt of laboratory analytical results of soil samples from the drums, ERI will coordinate with ExxonMobil for disposal of the soil and water. ERI appreciates your cooperation to ensure that field work occurs safely and efficiently, and will minimize disruptions to station operations during the field work. Please note, however, that the location of hand-auger boring HA1 will necessitate closure of the southwest driveway for approximately 8 hours as shown on the approved Traffic Control Plan.

Please call Ms. Paula Sime, ERI's project manager for this site, at (707) 766-2000 with any questions regarding the work.

Sincerely,  
Environmental Resolutions, Inc.

*Rebekah A. Westrup*  
**SCANNED IMAGE**

Rebekah A. Westrup  
Senior Staff Geologist

*Paula Sime*  
**SCANNED IMAGE**

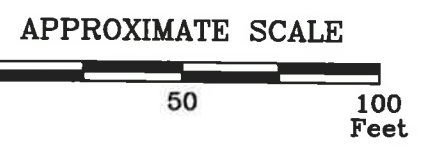
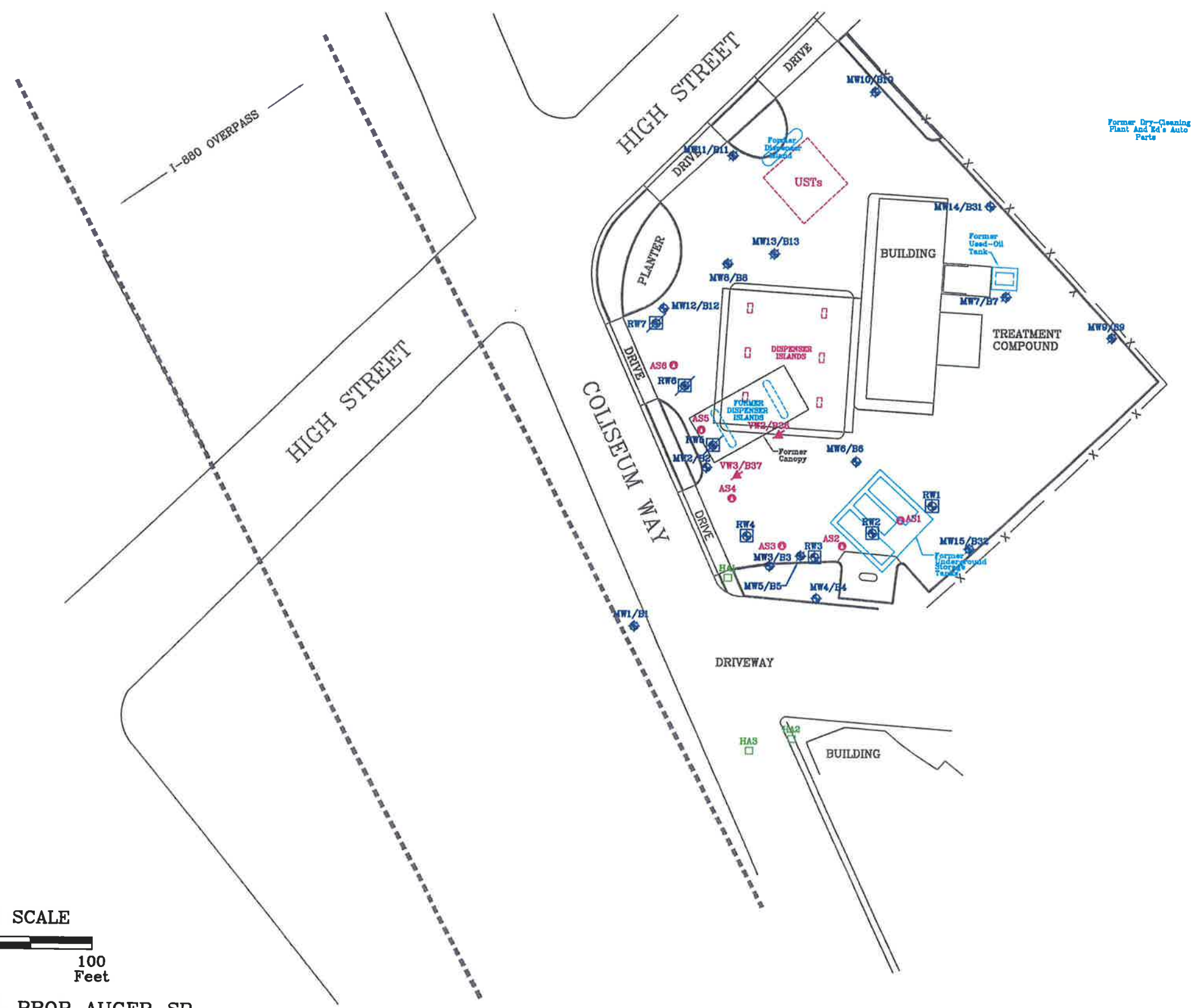
Paula Sime  
Project Manager

**Environmental Resolutions, Inc.**

Attachments:

Plate 1 Proposed Hand-Auger Location Map  
Traffic Control Plan

cc: Ms. Jennifer C. Sedlachek, ExxonMobil Environmental Services Company  
Ms. Barbara Jakub P.G., Alameda County Health Care Services Agency, Department of  
Environmental Health  
Mr. Mansour Sepehr, Ph.D., P.E., SOMA Environmental Engineering, Incorporated



FN 2010 08 TR1 PROP AUGER\_SP



### PROPOSED HAND-AUGER LOCATION MAP

FORMER  
EXXON SERVICE STATION 73006  
720 High Street  
Oakland, California

#### EXPLANATION

- MW14 Groundwater Monitoring Well
- AS6 Air Sparge Well
- RW4 Recovery Well
- MW16 Destroyed Groundwater Monitoring Well
- VW3/B37 Soil Vapor Extraction Well
- HAS Proposed Hand Auger
- RW Destroyed Recovery Well

PROJECT NO.  
2010

PLATE  
1

# TRAFFIC CONTROL PLAN - COLISEUM WAY @ HIGH STREET ( LOCATION 3)

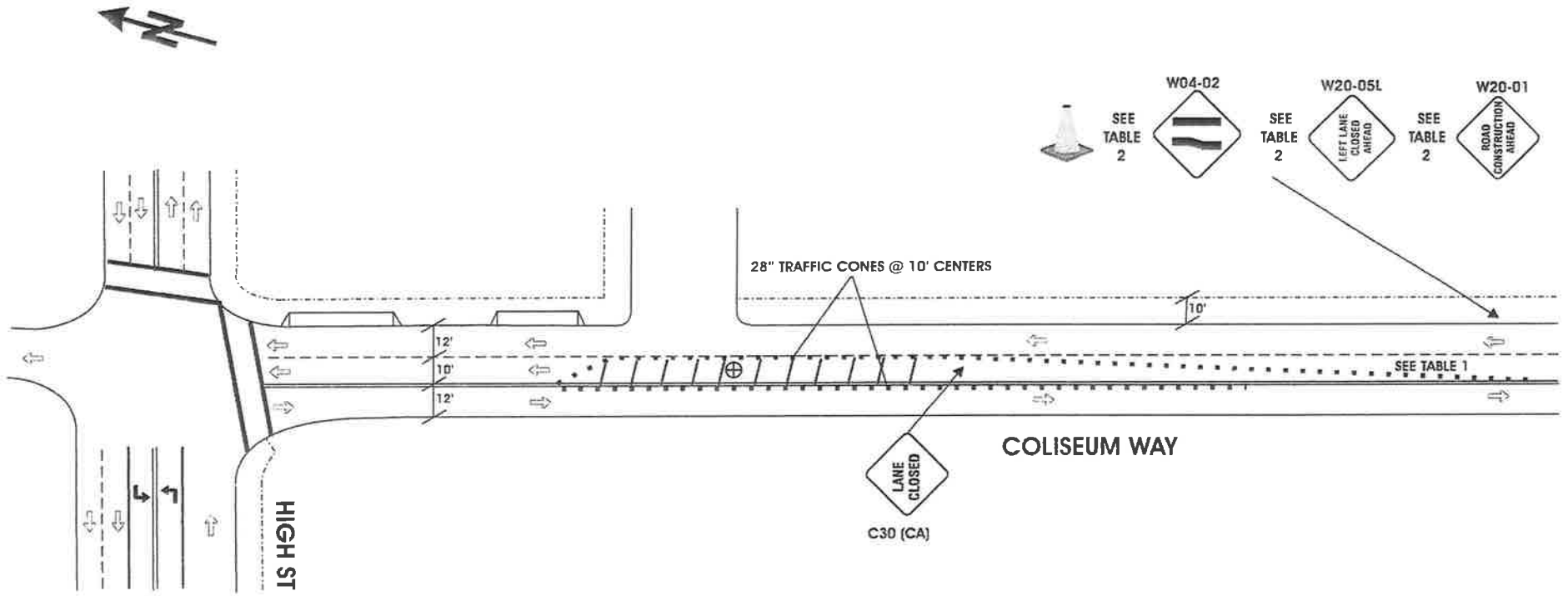


TABLE 1 - Typical Application Taper - Cones

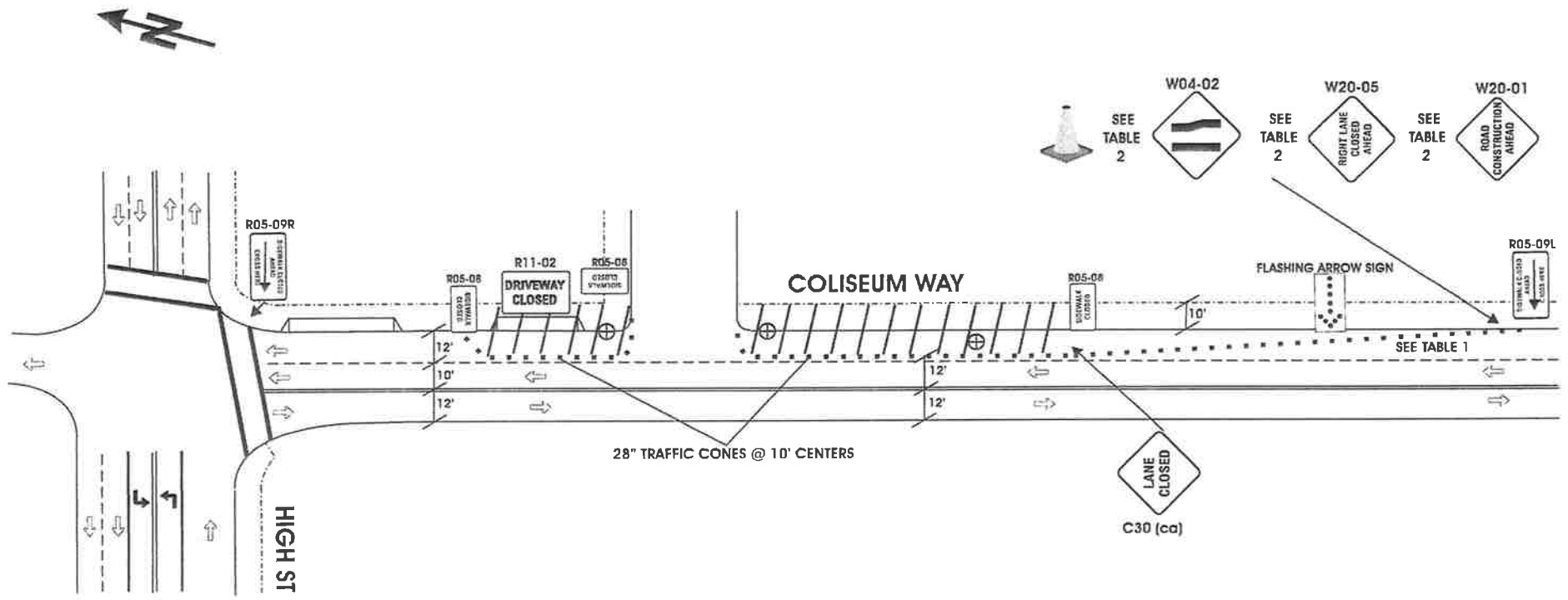
Approach Speed (MPH)	taper length (feet)	# of cones for taper (feet)	spacing cones along taper (ft)
0 - 25	125	6	25
26 - 40	320	9	40
41 - 50	600	13	50

TABLE 2 - Typical Application Signs

Approach Speed (MPH)	between signs (feet) A first sign	between signs (feet) B second sign	between signs (feet) C third sign
Urban low / moderate speeds	100	100	100
Urban high speeds	350	350	350
Rural	500	500	500
Freeway	1000	1500	2640

PREPARED BY: ROBERT SCULLY  
 HIGHWAY TECHNOLOGIES, INC.  
 1277 OLD BAYSHORE HWY.  
 SAN JOSE CA. 95112  
 (408) 295-8210  
 (408) 998-5939 FAX  
 C-31 C-32 CONTRACTORS LIC. 796782

# TRAFFIC CONTROL PLAN - COLISEUM WAY @ HIGH STREET ( LOCATIONS 1, 2, & 4 )



**TABLE 1 - Typical Application Taper - Cones**

Approach Speed (MPH)	taper length (feet)	# of cones for taper (feet)	spacing cones along taper (ft)
0 - 25	125	6	25
26 - 40	320	9	40
41 - 50	600	13	50

0 - 25  
26 - 40  
41 - 50

125  
320  
600

6  
9  
13

25  
40  
50

**TABLE 2 - Typical Application Signs**

Approach Speed (MPH)	between signs (feet) A first sign	between signs (feet) B second sign	between signs (feet) C third sign
Urban low / moderate speeds	100	100	100
Urban high speeds	350	350	350
Rural	500	500	500
Freeway	1000	1500	2640

Urban low / moderate speeds  
Urban high speeds  
Rural  
Freeway

100  
350  
500  
1000

100  
350  
500  
1500

100  
350  
500  
2640

PREPARED BY: ROBERT SCULLY  
HIGHWAY TECHNOLOGIES, INC.  
1277 OLD BAYSHORE HWY.  
SAN JOSE CA. 95112  
(408) 295-8210  
(408) 998-5939 FAX  
C-31 C-32 CONTRACTORS LIC. 796782