

C A M B R I A

484

May 7, 2003

Mr. Barney Chan  
Alameda County Department of Environmental Health  
UST Local Oversight Program  
1131 Harbor Bay Parkway, Suite 250  
Alameda, California 94502-6577

Re: **First Quarter 2003 Monitoring Report**  
Former ARCO Service Station (Bo Gin)  
706 Harrison Street  
Oakland, California  
STID 3749  
Cambria Project #230-0116

Alameda County  
MAY 13 2003  
Environmental Health



Dear Mr. Chan:

On behalf of Mr. Bo K. Gin, Cambria Environmental Technology, Inc. (Cambria) is submitting this first quarter 2003 groundwater monitoring report for the above-referenced site. Presented in the report are the first quarter 2003 activities and results and the anticipated second quarter 2003 activities.

If you have any questions or comments regarding this report, please call me at (510) 420-3314.

Sincerely,  
**Cambria Environmental Technology, Inc.**

A handwritten signature in black ink, appearing to read 'Matthew A. Meyers', with a stylized flourish at the end.

Matthew A. Meyers  
Senior Staff Geologist

Attachments: First Quarter 2003 Monitoring Report

cc: Mr. Bo K. Gin, 342 Lester Avenue, Oakland, California 94606

**Cambria  
Environmental  
Technology, Inc.**

5900 Hollis Street  
Suite A  
Emeryville, CA 94608  
Tel (510) 420-0700  
Fax (510) 420-9170

179

C A M B R I A

**FIRST QUARTER 2003 MONITORING REPORT**

**Former ARCO Service Station (Bo Gin)  
706 Harrison Street  
Oakland, California  
STID 3749  
Cambria Project #230-0116**



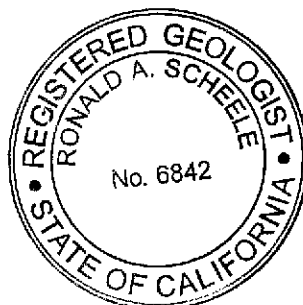
**May 7, 2003**

*Prepared for:*

Mr. Bo K. Gin  
342 Lester Avenue  
Oakland, California 94606

*Prepared by:*

Cambria Environmental Technology, Inc.  
5900 Hollis Street, Suite A  
Emeryville, California 94608



Matthew A. Meyers  
Senior Staff Geologist

Ron Scheele, R.G.  
Associate Geologist

**Cambria  
Environmental  
Technology, Inc.**

5900 Hollis Street  
Suite A  
Emeryville, CA 94608  
Tel (510) 420-0700  
Fax (510) 420-9170

## FIRST QUARTER 2003 MONITORING REPORT

Former ARCO Service Station (Bo Gin)  
706 Harrison Street  
Oakland, California  
STID 3749  
Cambria Project #230-0116

May 7, 2003



### INTRODUCTION

On behalf of Mr. Bo K. Gin, Cambria Environmental Technology, Inc. (Cambria) is submitting this first quarter 2003 groundwater monitoring report for the above-referenced site. Presented below are the first quarter 2003 activities and results and the anticipated second quarter 2003 activities.

### FIRST QUARTER 2003 ACTIVITIES

#### Monitoring Activities

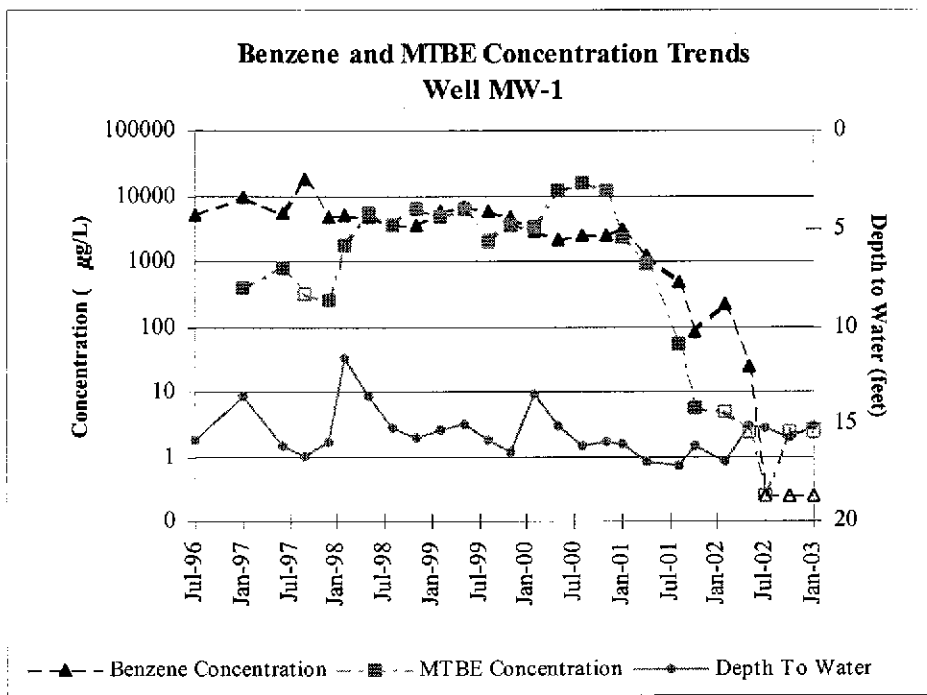
*Field Activities:* On January 23, 2003, Cambria conducted quarterly monitoring and sampling activities. Cambria gauged groundwater levels in monitoring wells MW-1 through MW-7 (see Figure 1). Groundwater samples were collected from wells MW-1 through MW-7. Field Data Sheets are presented as Attachment A. The well gauging data has been submitted to the Geotracker database. See Appendix D for the Electronic Delivery confirmations.

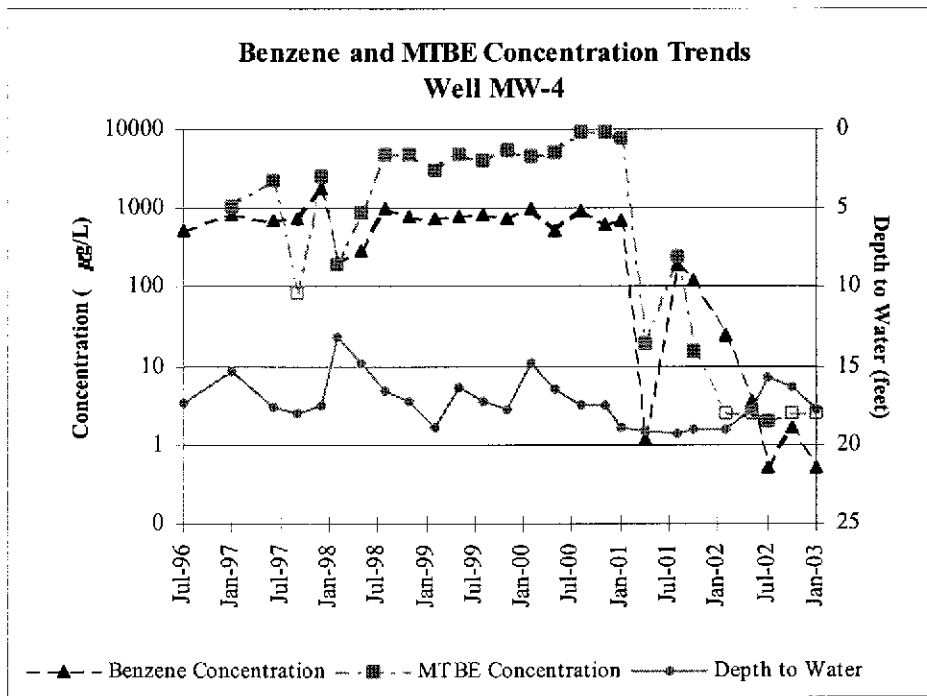
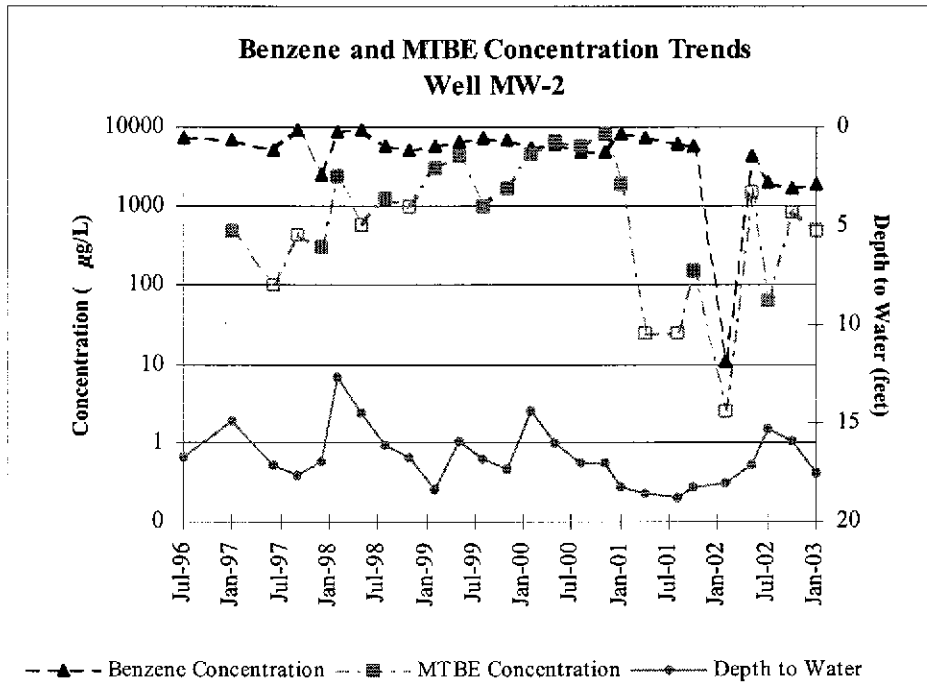
*Sample Analyses:* Groundwater samples were analyzed for total petroleum hydrocarbons as gasoline (TPHg) by modified EPA Method 8015; benzene, toluene, ethylbenzene, and xylenes (BTEX), and methyl tertiary butyl ether (MTBE) by EPA Method 8021B. The laboratory analytical report is included as Attachment B. Groundwater analytical results are shown on Table 1 and summarized on Figure 1. The groundwater sampling results have been submitted to the Geotracker database. See Appendix D for the Electronic Delivery confirmations.

**Monitoring Results**


**Groundwater Gradient:** Based on depth-to-water measurements collected during Cambria's January 23, 2003 site visit, groundwater in the southern portion of the site flows toward the south-southwest at a rate of 0.017 ft/ft and in the northern portion of the site flows north at a rate of 0.029 ft/ft (Figure 1). This split gradient has been observed during previous first quarter monitoring events.

**Hydrocarbon Distribution in Groundwater:** Hydrocarbon concentrations were detected in five of the seven monitoring wells sampled this quarter. Maximum TPHg and benzene concentrations were detected in well MW-2 at 40,000 and 1,900 micrograms per liter ( $\mu\text{g/L}$ ), respectively. MTBE was not detected in any of the wells sampled during the first quarter sampling event. Overall, hydrocarbon concentrations were similar to or less than the previous quarter, except for the very low benzene concentrations detected in wells MW-5, MW-6, and MW-7. These single constituent, low-level detections in previously clean wells may possibly be due to an undetected constituent (i.e. TCE) that eludes at or close to the same time as benzene on a gas chromatogram. Further laboratory analysis using a mass spectrometer would be needed to confirm this possibility. Wells MW-1, MW-2, and MW-4 continue to exhibit decreasing benzene and MTBE concentration trends as shown in the graphs below and in Attachment C. Please note that benzene and MTBE have been below laboratory detection limits in MW-1 the last three sampling events as indicated by the unshaded boxes.





### Corrective Action Activities



*System Evaluation:* As requested by Barney Chan of the Alameda County Department of Environmental Health (ACDEH), Cambria sampled vapor wells VW-3 and VW-4 to determine the groundwater concentrations in the southwest UST cavity and to evaluate whether air sparging is still warranted. On March 6, 2003, Cambria collected groundwater samples from vapor wells VW-3 and VW-4 while the air sparge (AS) system was operating. On March 17, 2003, the AS system was turned off and on March 25, 2003, groundwater samples were again collected from vapor wells VW-3 and VW-4 to see if groundwater concentrations would rebound.

*Sample Analyses:* Vapor well groundwater samples were analyzed for TPHg by modified EPA Method 8015 and BTEX and MTBE by EPA Method 8021B. The laboratory analytical report is included as Attachment B. Vapor well groundwater analytical results are shown on Table 1.

### System Evaluation Results

No hydrocarbon or MTBE concentrations were detected in vapor wells VW-3 or VW-4 sampled on March 6 and 25, 2003. Since hydrocarbon and MTBE concentrations were below detection limits in groundwater within the southwest UST excavation, Cambria has discontinued air sparging operations and recommends no further sampling of these vapor wells.

## ANTICIPATED SECOND QUARTER 2003 ACTIVITIES

### Monitoring Activities

Cambria will gauge water levels in all wells and collect groundwater samples from wells MW-1, MW-2, and MW-4. As per ACDEH's letter dated February 25, 2003, the well sampling schedule has been revised so that wells MW-1, MW-2, and MW-4 are sampled on a quarterly basis and wells MW-3, MW-5, MW-6, and MW-7 are sampled on a semi-annual basis during the first and third quarters. Groundwater samples will be analyzed for TPHg by Modified EPA Method 8015, and BTEX and MTBE by EPA Method 8021. Any samples containing MTBE will be confirmed by EPA Method 8260. Cambria will prepare a groundwater monitoring report summarizing the monitoring activities and results.

**Corrective Action Activities**

Cambria will prepare and submit a work plan that will propose the drilling of several soil borings to enable the collection of groundwater and soil vapor samples in the former 6,000-gallon UST cavity and in the vicinity of MW-2. The work plan will also include hydrogeologic cross-sections, hydrocarbon mass estimates, and a utility survey.

**ATTACHMENTS**

Figure 1 – Groundwater Elevation Contour Map

Table 1 – Groundwater Elevations and Analytical Data

Attachment A – Groundwater Monitoring Field Data Sheets

Attachment B – Laboratory Analytical Report

Attachment C – Benzene and MTBE Concentration Graphs

Attachment D – Electronic Delivery Confirmations

### EXPLANATION

- Monitoring Well Location
- Dual Well, SVE/Sparging Well
- SVE Well

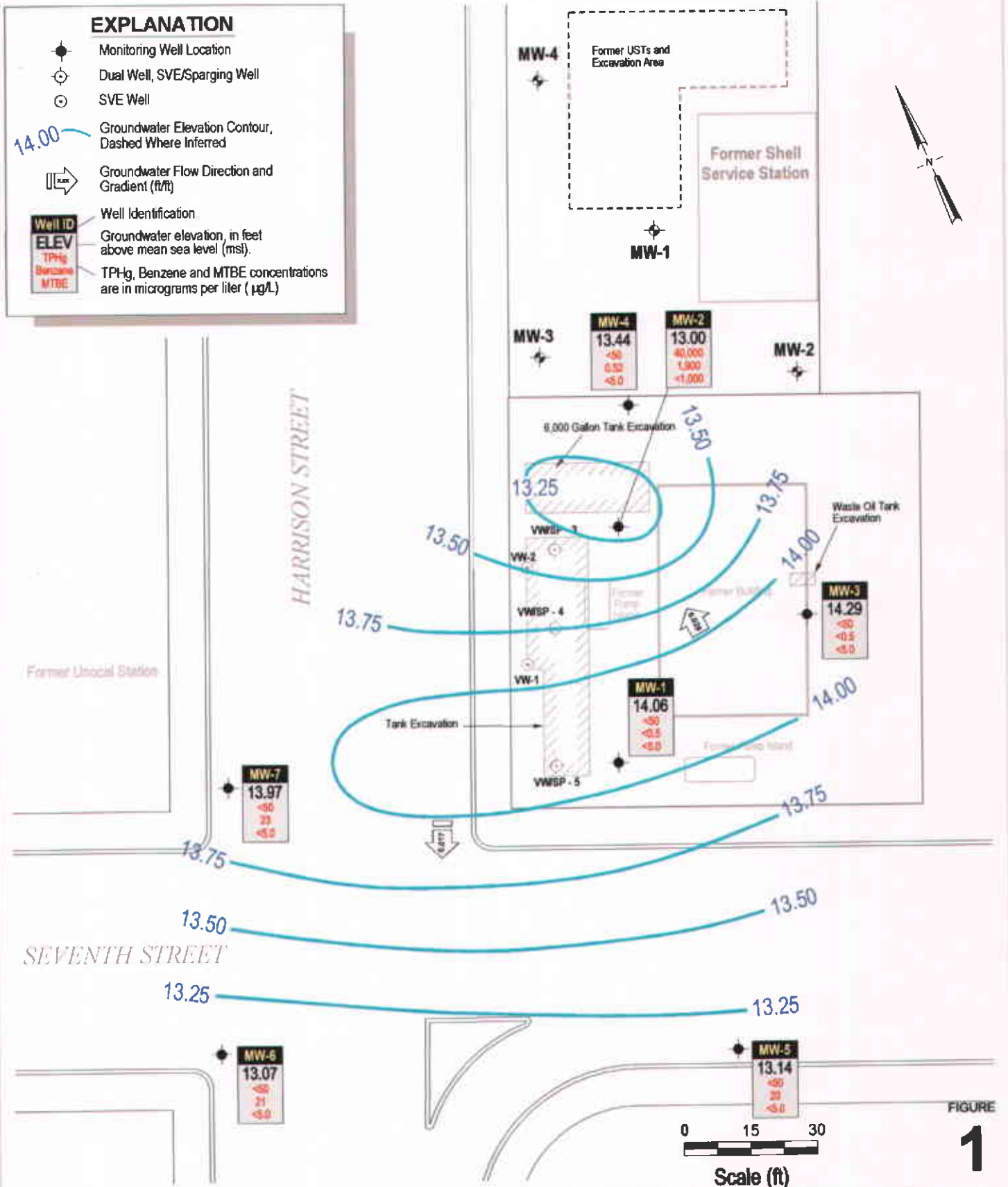
14.00 Groundwater Elevation Contour, Dashed Where Inferred

Groundwater Flow Direction and Gradient (ft/ft)

Well Identification

Groundwater elevation, in feet above mean sea level (msl).

TPHg, Benzene and MTBE concentrations are in micrograms per liter ( $\mu\text{g/L}$ )



H:\88-2004\04A\G-1\WP\04UREN\1\0401-1-A\FP-DWG

FIGURE

# 1

**Former Arco Station**  
 706 Harrison Street  
 Oakland, California



C A M B R I A

**Groundwater Elevation Contour Map**  
 January 23, 2003



# CAMBRIA

**Table 1. Groundwater Elevations and Analytical Data: Former ARCO Station - 706 Harrison Street, Oakland, California**

Well ID	TOC	Monitoring Frequency	Date Sampled	Depth to Water (ft)	Groundwater Elevation (ft-msl)	TPHg (µg/L)	Benzene (µg/L)	Toluene (µg/L)	Ethylbenzene (µg/L)	Xylenes (µg/L)	MTBE (8020) (µg/L)	MTBE (8260) (µg/L)	Notes
MW-1			8/13/93	17.40	11.75	20,000	8,500	640	280	440	-	-	
			12/14/93	17.27	11.88	17,000	9,200	1,200	4,400	540	-	-	
		Quarterly	4/15/94	17.00	12.15	9,500	3,600	530	160	280	-	-	
			12/29/94	16.40	12.75	-	-	-	-	-	-	-	
			7/19/96	15.83	13.32	17,000	5,200	1,100	330	530	-	-	sheen/odor
			1/27/97	13.58	15.57	30,000	9,800	1,300	790	880	400	-	b, sheen/odor
			6/18/97	16.11	13.04	19,000	5,600	1,400	510	770	1,200	800	a, b
			9/18/97	16.62	12.53	48,000	18,000	4,400	1,000	1,700	<640	-	b
			12/10/97	15.93	13.22	22,000	4,900	1,300	580	650	460	260	a, b, odor
			2/18/98	11.56	17.59	16,000	5,000	750	400	780	1,800	-	b
			5/12/98	13.53	15.62	19,000	4,600	810	450	770	5,500	-	b, c
			8/18/98	15.19	13.96	12,000	3,600	1,300	300	570	5,100	3,700	a, b
			11/24/98	15.67	13.48	13,000	3,600	890	330	380	6,100	-	b
			2/4/99	15.31	13.84	20,000	5,900	830	450	500	4,900	-	b
			5/18/99	14.95	14.20	23,000	7,000	1,600	520	830	6,100	-	b
			8/27/99	15.84	13.31	19,000	5,800	1,700	410	710	1,800	2,100	a, b
			11/18/99	16.39	12.76	20,000	4,900	630	410	580	4,900	3,600	b
			2/29/00	13.43	15.72	12,000	2,800	24	290	170	3,100	3,400	a
			5/25/00	15.08	14.07	12,000	2,200	120	330	260	9,100	12,000	a, b
			8/9/00	16.09	13.06	13,000	2,500	44	310	140	16,000	-	b
			11/9/00	15.90	13.25	11,000	2,500	140	380	150	11,000	12,000	b
			1/29/01	16.05	13.10	9,600	3,100	100	77	200	2,600	2,400	b
			4/16/01	16.90	12.25	3,300	1,200	4.4	2.7	28	900	940	b
			8/14/01	17.13	12.02	2,000	500	3.4	24	7.8	68	53	a
			10/22/01	16.11	13.04	220	83	0.63	2.8	<0.5	<10	5.7	a
			2/1/02	16.93	12.22	640	220	1.7	4.7	0.57	<10	-	a
			5/10/02	15.09	14.06	230	26	0.97	<0.5	<0.5	<5.0	-	a
			7/8/02	15.20	13.95	<50	<0.5	<0.5	<0.5	<0.5	<5.0	<0.5	
			10/2/02	15.70	13.45	<50	<0.5	<0.5	<0.5	<0.5	<5.0	-	
			1/23/03	15.09	14.06	<50	<0.5	<0.5	<0.5	<0.5	<5.0	-	

# CAMBRIA

**Table 1. Groundwater Elevations and Analytical Data:** Former ARCO Station - 706 Harrison Street, Oakland, California

Well ID	TOC Monitoring Frequency	Date Sampled	Depth to Water (ft)	Groundwater Elevation (ft-msl)	TPHg (µg/L)	Benzene (µg/L)	Toluene (µg/L)	Ethylbenzene (µg/L)	Xylenes (µg/L)	MTBE (8020) (µg/L)	MTBE (8260) (µg/L)	Notes
MW-2		8/13/93	17.05	13.46	34,000	6,800	10,000	740	3,900	-	-	
30.5I		12/14/93	18.28	12.23	16,000	3,200	4,200	500	1,700	-	-	
Quarterly		4/15/94	18.10	12.41	23,000	2,500	4,200	470	1,800	-	-	
		12/29/94	17.40	13.11	-	-	-	-	-	-	-	
		7/19/96	16.72	13.79	90,000	7,300	14,000	1,600	7,300	-	-	odor
		1/27/97	14.89	15.62	63,000	7,100	13,000	1,600	7,100	500	-	b, odor
		6/18/97	17.12	13.39	52,000	5,100	10,000	1,400	6,000	<200	-	b
		9/18/97	17.63	12.88	110,000	9,400	23,000	2,600	13,000	<890	-	b, sheen/odor
		12/10/97	16.98	13.53	39,000	2,600	5,300	940	3,900	780	320	b, odor
		2/18/98	12.61	17.90	85,000	9,000	19,000	2,300	11,000	2,400	-	b
		5/12/98	14.45	16.06	110,000	9,500	21,000	2,500	12,000	<1,200	-	b
		8/18/98	16.14	14.37	64,000	6,000	13,000	1,700	7,800	2,000	1,300	a, b
		11/24/98	16.70	13.81	78,000	5,300	14,000	2,300	11,000	<2,000	-	b, g
		2/4/99	18.39	12.12	66,000	5,800	16,000	2,600	12,000	3,000	-	b, g
		5/18/99	15.90	14.61	78,000	6,700	17,000	2,400	10,000	4,300	-	b
		8/27/99	16.79	13.72	91,000	7,400	17,000	2,300	11,000	1,200	1,000	a, b
		11/18/99	17.32	13.19	180,000	7,000	20,000	3,300	16,000	<6,000	1,700	b, g
		2/29/00	14.37	16.14	86,000	5,500	13,000	2,000	9,500	3,500	4,700	a
		5/25/00	16.01	14.50	110,000	6,300	14,000	2,400	10,000	7,500	6,500	a, b, g
		8/9/00	17.02	13.49	77,000	5,000	13,000	2,000	8,600	5,900	-	b
		11/9/00	17.00	13.51	70,000	4,800	12,000	1,900	8,000	9,400	8,300	b
		1/29/01	18.31	12.20	110,000	8,200	21,000	2,800	13,000	2,500	1,900	b, g
		4/16/01	18.59	11.92	97,000	7,400	15,000	2,500	12,000	<3,000	<50	b, g
		8/14/01	18.74	11.77	97,000	6,200	14,000	2,400	13,000	<250	<50	a, j
		10/22/01	18.27	12.24	71,000	5,900	15,000	2,400	12,000	<1,400	150	a
		2/1/02	18.05	12.46	1,400	11	88	44	210	<5.0	-	a
		5/10/02	17.15	13.36	97,000	4,500	15,000	2,500	12,000	<3,000	-	a, g
		7/8/02	15.30	15.21	42,000	2,100	6,500	2,200	8,800	<1,000	65	a
		10/2/02	15.89	14.62	70,000	1,700	5,700	1,900	8,300	<1,700	-	a
		1/23/03	17.51	13.00	40,000	1,900	7,800	1,200	5,600	<1,000	-	a

# CAMBRIA

**Table 1. Groundwater Elevations and Analytical Data:** Former ARCO Station - 706 Harrison Street, Oakland, California

Well ID		Depth to	Groundwater								
TOC		Water	Elevation	TPHg	Benzene	Toluene	Ethylbenzene	Xylenes	MTBE (8020)	MTBE (8260)	
Monitoring	Date Sampled	(ft)	(ft-msl)	(µg/L)	(µg/L)	(µg/L)	(µg/L)	(µg/L)	(µg/L)	(µg/L)	Notes
Frequency											
MW-3	8/13/93	17.05	12.72	<50	<0.50	<0.50	<0.50	<1.5	-	-	
29.77	12/14/93	17.70	12.07	<50	<0.50	<0.50	<0.50	<1.5	-	-	
Semi-annually	4/15/94	17.40	12.37	<50	<0.5	<0.5	<0.5	<0.5	-	-	
	12/29/94	16.80	12.97	-	-	-	-	-	-	-	
	7/19/96	16.28	13.49	<50	<0.5	<0.5	<0.5	<0.5	-	-	
	1/27/97	13.83	15.94	<50	<0.5	<0.5	<0.5	<0.5	<5.0	-	
	6/18/97	16.53	13.24	<50	<0.5	<0.5	<0.5	<0.5	<5.0	-	
	9/18/97	17.07	12.70	<50	<0.5	<0.5	<0.5	<0.5	<5.0	-	
	12/10/97	16.15	13.62	<50	<0.5	<0.5	<0.5	<0.5	<5.0	-	
	2/18/98	11.80	17.97	<50	<0.5	<0.5	<0.5	<0.5	<5.0	-	
	5/12/98	13.85	15.92	<50	<0.5	<0.5	<0.5	<0.5	<5.0	-	
	8/18/98	15.57	14.20	<50	<0.5	<0.5	<0.5	<0.5	<5.0	-	
	11/24/98	16.04	13.73	<50	<0.5	<0.5	<0.5	<0.5	<5.0	-	
	2/4/99	17.80	11.97	<50	<0.5	<0.5	<0.5	<0.5	<5.0	-	
	5/18/99	15.29	14.48	<50	<0.5	<0.5	<0.5	<0.5	<5.0	-	
	8/27/99	16.15	13.62	<50	<0.5	<0.5	<0.5	<0.5	<5.0	-	
	11/18/99	16.77	13.00	-	-	-	-	-	-	-	
	2/29/00	13.71	16.06	<50	2	<0.5	<0.5	<0.5	<5.0	-	
	5/25/00	15.46	14.31	-	-	-	-	-	-	-	
	8/9/00	16.46	13.31	<50	<0.5	<0.5	<0.5	<0.5	<5.0	-	
	11/9/00	16.25	13.52	-	-	-	-	-	-	-	
	1/29/01	16.52	13.25	<50	<0.5	<0.5	<0.5	<0.5	<5.0	-	
	4/16/01	16.95	12.82	-	-	-	-	-	-	-	
	8/14/01	17.11	12.66	<50	<0.5	<0.5	<0.5	<0.5	<5.0	-	
	10/22/01	16.50	13.27	-	-	-	-	-	-	-	
	2/1/02	16.90	12.87	<50	<0.5	<0.5	<0.5	<0.5	<5.0	-	
	5/10/02	15.03	14.74	-	-	-	-	-	-	-	
	7/8/02	14.45	15.32	<50	<0.5	<0.5	<0.5	<0.5	<5.0	-	
	10/2/02	15.03	14.74	-	-	-	-	-	-	-	
	1/23/03	15.48	14.29	<50	<0.5	<0.5	<0.5	<0.5	<5.0	-	

# CAMBRIA

**Table 1. Groundwater Elevations and Analytical Data:** Former ARCO Station - 706 Harrison Street, Oakland, California

Well ID	TOC	Monitoring Frequency	Date Sampled	Depth to Water (ft)	Groundwater Elevation (ft-msl)	TPHg (µg/L)	Benzene (µg/L)	Toluene (µg/L)	Ethylbenzene (µg/L)	Xylenes (µg/L)	MTBE (8020) (µg/L)	MTBE (8260) (µg/L)	Notes
MW-4			12/16/94	18.10	13.08	2,500	32	6.5	4.5	17	-	-	
31.18			12/29/94	17.95	13.23	-	-	-	-	-	-	-	
Quarterly			7/19/96	17.38	13.80	3,300	520	39	67	60	-	-	
			1/27/97	15.25	15.93	4,500	860	55	100	91	1,100	-	b
			6/18/97	17.61	13.57	2,700	700	52	81	76	2,200	2,300	a, b
			9/18/97	18.01	13.17	3,900	760	38	56	64	<170	-	b
			12/10/97	17.45	13.73	12,000	1,800	120	210	210	2,900	2,600	a, b
			2/18/98	13.09	18.09	1,700	210	8	6.7	16	200	-	b
			5/12/98	14.78	16.40	2,100	300	15	36	34	920	-	b, c
			8/18/98	16.59	14.59	4,700	1,000	130	110	150	5,200	4,900	a, b
			11/24/98	17.18	14.00	3,000	810	44	76	94	4,800	-	b
			2/4/99	18.90	12.28	2,800	770	50	69	69	3,100	-	b
			5/18/99	16.30	14.88	4,000	780	57	7.7	79	4,800	-	b
			8/27/99	17.21	13.97	4,100	870	51	74	99	3,300	4,100	a, b
			11/18/99	17.77	13.41	3,000	760	43	67	65	5,100	5,400	b
			2/29/00	14.85	16.33	4,600	1,000	64	94	170	4,100	4,600	a
			5/25/00	16.45	14.73	2,600	540	39	59	41	3,500	5,300	b
			8/9/00	17.47	13.71	4,400	930	66	98	79	9,400	-	b
			11/9/00	17.45	13.73	4,200	630	34	54	44	7,800	9,400	b
			1/29/01	18.90	12.28	3,100	710	34	66	51	9,400	8,000	b
			4/16/01	19.17	12.01	160	1.2	1.3	<0.5	12	22	20	b
			8/14/01	19.20	11.98	1,700	190	11	35	13	300	250	b
			10/22/01	18.95	12.23	1,100	120	3.7	29	7.9	<25	16	a
			2/1/02	19.05	12.13	2,600	25	43	21	280	<5.0	-	a
			5/10/02	17.69	13.49	490	3.5	2.0	2.1	2.2	<5.0	-	a
			7/8/02	15.75	15.43	170	0.51	0.62	1.6	1.2	<5.0	2.0	m
			10/2/02	16.30	14.88	240	1.7	2.0	2.2	0.88	<5.0	-	a
			1/23/03	17.74	13.44	<50	0.52	4.1	<0.5	1.9	<5.0	-	

# CAMBRIA

**Table 1. Groundwater Elevations and Analytical Data:** Former ARCO Station - 706 Harrison Street, Oakland, California

Well ID		Depth to	Groundwater								
TOC		Water	Elevation	TPHg	Benzene	Toluene	Ethylbenzene	Xylenes	MTBE (8020)	MTBE (8260)	Notes
Monitoring	Date Sampled	(ft)	(ft-msl)	(µg/L)	(µg/L)	(µg/L)	(µg/L)	(µg/L)	(µg/L)	(µg/L)	
MW-5	12/16/94	16.07	11.97	<50	1.1	<0.5	<0.5	2.4	-	-	
28.04	12/29/94	16.10	11.94	-	-	-	-	-	-	-	
Semi-annually	7/19/96	15.49	12.55	<50	<0.5	<0.5	<0.5	<0.5	-	-	
	1/27/97	13.60	14.44	<50	<0.5	<0.5	<0.5	<0.5	<5.0	-	
	6/18/97	15.55	12.49	<50	<0.5	<0.5	<0.5	<0.5	<5.0	-	
	9/18/97	16.16	11.88	<50	<0.5	<0.5	<0.5	<0.5	<5.0	-	
	12/10/97	15.41	12.63	<50	<0.5	<0.5	<0.5	<0.5	<5.0	-	
	2/18/98	10.93	17.11	<50	<0.5	<0.5	<0.5	<0.5	<5.0	-	
	5/12/98	13.25	14.79	<50	<0.5	<0.5	<0.5	<0.5	<5.0	-	
	8/18/98	14.75	13.29	<50	<0.5	<0.5	<0.5	<0.5	<5.0	-	
	11/24/98	15.15	12.89	<50	<0.5	<0.5	<0.5	<0.5	<5.0	-	
	2/4/99	14.61	13.43	<50	<0.5	<0.5	<0.5	<0.5	<5.0	-	
	5/18/99	14.15	13.89	<50	<0.5	<0.5	<0.5	<0.5	<5.0	-	
	8/27/99	15.43	12.61	<50	<0.5	<0.5	<0.5	<0.5	<5.0	-	
	11/18/99	15.97	12.07	-	-	-	-	-	-	-	
	2/29/00	13.16	14.88	<50	<0.5	<0.5	<0.5	<0.5	<5.0	-	
	5/25/00	14.72	13.32	-	-	-	-	-	-	-	
	8/9/00	15.68	12.36	<50	<0.5	<0.5	<0.5	<0.5	<5.0	-	
	11/9/00	15.39	12.65	-	-	-	-	-	-	-	
	1/29/01	15.97	12.07	<50	<0.5	<0.5	<0.5	<0.5	<5.0	-	
	4/16/01	16.24	11.80	-	-	-	-	-	-	-	
	8/14/01	17.39	10.65	<50	<0.5	<0.5	<0.5	<0.5	<5.0	-	
	10/22/01	15.90	12.14	-	-	-	-	-	-	-	
	2/1/02	16.55	11.49	<50	<0.5	<0.5	<0.5	<0.5	<5.0	-	
	5/10/02	15.12	12.92	-	-	-	-	-	-	-	
	7/8/02	15.92	12.12	<50	<0.5	<0.5	<0.5	<0.5	<5.0	-	
	10/2/02	16.42	11.62	-	-	-	-	-	-	-	
	1/23/03	14.90	13.14	<50	20	<0.5	<0.5	<0.5	<5.0	-	

# CAMBRIA

**Table 1. Groundwater Elevations and Analytical Data: Former ARCO Station - 706 Harrison Street, Oakland, California**

Well ID		Depth to	Groundwater								
TOC		Water	Elevation	TPHg	Benzene	Toluene	Ethylbenzene	Xylenes	MTBE (8020)	MTBE (8260)	Notes
Monitoring	Date Sampled	(ft)	(ft-msl)	(µg/L)	(µg/L)	(µg/L)	(µg/L)	(µg/L)	(µg/L)	(µg/L)	
Frequency											
MW-6	12/16/94	17.74	11.36	-	-	-	-	-	-	-	
29.10	12/29/94	17.40	11.70	-	-	-	-	-	-	-	
Semi-annually	7/19/96	16.60	12.50	<50	<0.5	<0.5	<0.5	<0.5	-	-	
	1/27/97	14.88	14.22	<50	<0.5	<0.5	<0.5	<0.5	<5.0	-	
	6/18/97	16.73	12.37	51	22	<0.5	<0.5	<0.5	<5.0	-	c
	9/18/97	17.24	11.86	<50	<0.5	<0.5	<0.5	<0.5	<5.0	-	
	12/10/97	16.56	12.54	<50	<0.5	<0.5	<0.5	<0.5	<5.0	-	
	2/18/98	12.93	16.17	<50	<0.5	<0.5	<0.5	<0.5	<5.0	-	
	5/12/98	14.35	14.75	<50	<0.5	<0.5	<0.5	<0.5	<5.0	-	
	8/18/98	15.94	13.16	<50	<0.5	<0.5	<0.5	<0.5	<5.0	-	
	11/24/98	16.46	12.64	<50	<0.5	<0.5	<0.5	<0.5	<5.0	-	
	2/4/99	18.25	10.85	<50	<0.5	<0.5	<0.5	<0.5	<5.0	-	
	5/18/99	15.73	13.37	<50	<0.5	<0.5	<0.5	<0.5	<5.0	-	
	8/27/99	15.64	13.46	<50	<0.5	<0.5	<0.5	<0.5	<5.0	-	
	11/18/99	17.04	12.06	-	-	-	-	-	-	-	
	2/29/00	14.55	14.55	<50	<0.5	<0.5	<0.5	<0.5	<5.0	-	
	5/25/00	15.86	13.24	-	-	-	-	-	-	-	
	8/9/00	16.80	12.30	<50	<0.5	<0.5	<0.5	<0.5	<5.0	-	
	11/9/00	16.60	12.50	-	-	-	-	-	-	-	
	1/29/01	17.00	12.10	<50	<0.5	<0.5	<0.5	<0.5	<5.0	-	
	4/16/01	17.15	11.95	-	-	-	-	-	-	-	
	8/14/01	17.30	11.80	<50	<0.5	<0.5	<0.5	<0.5	<5.0	-	
	10/22/01	17.13	11.97	-	-	-	-	-	-	-	
	2/1/02	16.57	12.53	70	37	<0.5	<0.5	<0.5	<5.0	-	a
	5/10/02	15.25	13.85	-	-	-	-	-	-	-	
	7/8/02	15.79	13.31	<50	<0.5	<0.5	<0.5	<0.5	<5.0	-	
	10/2/02	16.38	12.72	-	-	-	-	-	-	-	
	1/23/03	16.03	13.07	<50	21	<0.5	<0.5	<0.5	<5.0	-	

# CAMBRIA

**Table 1. Groundwater Elevations and Analytical Data: Former ARCO Station - 706 Harrison Street, Oakland, California**

Well ID	TOC Monitoring Frequency	Date Sampled	Depth to Water (ft)	Groundwater Elevation (ft-msl)	TPHg (µg/L)	Benzene (µg/L)	Toluene (µg/L)	Ethylbenzene (µg/L)	Xylenes (µg/L)	MTBE (8020) (µg/L)	MTBE (8260) (µg/L)	Notes
MW-7		12/16/94	17.07	12.60	<50	<0.5	<0.5	<0.5	<0.5	<5.0	-	
29.67		12/29/94	17.65	12.02	-	-	-	-	-	-	-	
Semi-annually		7/19/96	16.44	13.23	<50	<0.5	<0.5	<0.5	<0.5	<5.0	-	
		1/27/97	15.09	14.58	<50	<0.5	<0.5	<0.5	<0.5	<5.0	-	
		6/18/97	16.59	13.08	73	<0.5	0.55	<0.5	<0.5	<5.0	-	d
		9/18/97	17.06	12.61	94	<0.5	<0.5	<0.5	<0.5	<5.0	-	e, f
		12/10/97	16.58	13.09	<50	<0.5	<0.5	<0.5	<0.5	<5.0	-	
		2/18/98	12.60	17.07	<50	<0.5	<0.5	<0.5	<0.5	<5.0	-	
		5/12/98	14.81	14.86	<50	<0.5	<0.5	<0.5	<0.5	<5.0	-	
		8/18/98	15.67	14.00	<50	<0.5	<0.5	<0.5	<0.5	<5.0	-	
		11/24/98	16.30	13.37	200	<0.5	<0.5	<0.5	<0.5	<5.0	-	d
		2/4/99	15.99	13.68	<50	<0.5	<0.5	<0.5	<0.5	<5.0	-	
		5/18/99	15.42	14.25	200	<0.5	<0.5	<0.5	<0.5	<5.0	-	d
		8/27/99	16.35	13.32	140	<0.5	<0.5	<0.5	<0.5	<5.0	-	
		11/18/99	16.81	12.86	--	--	--	--	--	--	--	
		2/29/00	14.16	15.51	100	<0.5	<0.5	<0.5	<0.5	<5.0	-	f
		5/25/00	15.54	14.13	--	--	--	--	--	--	--	
		8/9/00	16.56	13.11	<50	<0.5	<0.5	<0.5	<0.5	<5.0	-	
		11/9/00	16.45	13.22	-	-	-	-	-	-	-	
		1/29/01	16.92	12.75	<50	<0.5	<0.5	<0.5	<0.5	<5.0	-	
		4/16/01	17.03	12.64	-	-	-	-	-	-	-	
		8/14/01	17.27	12.40	<50	<0.5	<0.5	<0.5	<0.5	<5.0	-	
		10/22/01	16.95	12.72	-	-	-	-	-	-	-	
		2/1/02	16.14	13.53	<50	<0.5	<0.5	<0.5	<0.5	<5.0	-	
		5/10/02	15.30	14.37	-	-	-	-	-	-	-	
		7/8/02	15.73	13.94	<50	<0.5	<0.5	<0.5	<0.5	<5.0	-	
		10/2/02	16.24	13.43	-	-	-	-	-	-	-	
		1/23/03	15.70	13.97	<50	23	<0.5	<0.5	<0.5	<5.0	-	
VW-3		3/6/03	--	--	<50	<0.5	<0.5	<0.5	<0.5	<5.0	-	i
--		3/25/03	--	--	<50	<0.5	<0.5	<0.5	<0.5	<5.0	-	i
VW-4		3/6/03	--	--	<50	<0.5	<0.5	<0.5	<0.5	<5.0	-	
--		3/25/03	--	--	<50	<0.5	<0.5	<0.5	<0.5	<5.0	-	
Trip Blank		11/9/00	-	-	<50	<0.5	<0.5	<0.5	<0.5	<5.0	-	

# CAMBRIA

**Table 1. Groundwater Elevations and Analytical Data:** Former ARCO Station - 706 Harrison Street, Oakland, California

Well ID	TOC	Monitoring	Frequency	Date Sampled	Depth to Water (ft)	Groundwater Elevation (ft-msl)	TPHg (µg/L)	Benzene (µg/L)	Toluene (µg/L)	Ethylbenzene (µg/L)	Xylenes (µg/L)	MTBE (8020) (µg/L)	MTBE (8260) (µg/L)	Notes
<b>Abbreviations and Analyses:</b>							<b>Notes</b>							
TPHg = Total petroleum hydrocarbons as gasoline by modified EPA Method 8015							a = Analytical laboratory notes that unmodified or weakly modified gasoline is significant.							
Benzene, ethylbenzene, toluene and xylenes by EPA Method 8020.							b = Analytical laboratory notes that heavier gasoline range compounds are significant.							
MTBE = Methyl tertiary butyl ether by EPA Method 8020 and/or 8260.							c = Analytical laboratory notes that lighter gasoline range compounds are significant.							
µg/L = Micrograms per liter							d = Analytical laboratory notes that isolated peaks are present.							
TOC = Top of casing elevation with respect to mean sea level							e = Analytical laboratory notes that heavier gasoline range compounds are significant.							
- = not sampled							f = Analytical laboratory notes hydrocarbons with no recognizable patterns are present.							
Data prior to 12/16/94 provided by previous consultant.							g = Analytical laboratory notes lighter than water immiscible sheen is present.							
							j = Sample diluted due to high organic content.							
							i = Sample contains greater than ~2 vol. % sediment.							



C A M B R I A



**ATTACHMENT A**

Groundwater Monitoring Field Data Sheets

WELL DEPTH MEASUREMENTS

Well ID	Time	Product Depth	Water Depth	Product Thickness	Well Depth	Comments
MW-1	12:10		15.09		24.20	
MW-2	12:05		17.51		25.50	
MW-3	11:55		15.48		27.55	
MW-4	12:00		17.74		25.40	
MW-5	11:30		14.90		27.80	
MW-6	11:40		16.03		25.85	
MW-7	11:45		15.70		27.50	

Project Name: Bo Gin

Project Number: 230-0116

Measured By: L. Hill

Date: 1-23-03

WELL SAMPLING FORM

Project Name: <b>Bo Gin</b>	Cambria Mgr: <b>RAS</b>	Well ID: <b>MW-1</b>
Project Number: <b>230-0116</b>	Date: <b>1-23-03</b>	Well Yield:
Site Address: <b>706 Harrison St. Oakland, Ca</b>	Sampling Method: <b>Disposable Bailer</b>	Well Diameter: <b>2" pvc</b>
		Technician(s): <b>SO</b>
Initial Depth to Water: <b>15.09</b>	Total Well Depth: <b>24.20</b>	Water Column Height: <b>9.11</b>
Volume/ft: <b>0.16</b>	1 Casing Volume: <b>1.45</b>	3 Casing Volumes: <b>4.37</b>
Purging Device: <b>Disposable bailer</b>	Did Well Dewater?: <b>no</b>	Total Gallons Purged: <b>4</b>
Start Purge Time: <b>12:30</b>	Stop Purge Time: <b>1:44</b>	Total Time: <b>14 mins</b>

1 Casing Volume = Water column height x Volume/ ft.

Well Diam.	Volume/ft (gallons)
2"	0.16
4"	0.65
6"	1.47

Time	Casing Volume	Temp. (°C)	pH	Cond. (uS)	Comments
<b>12:35</b>	<b>1.5</b>	<b>19.1</b>	<b>7.09</b>	<b>742</b>	
<b>12:40</b>	<b>3</b>	<b>18.7</b>	<b>7.13</b>	<b>920</b>	
<b>12:45</b>	<b>4</b>	<b>18.5</b>	<b>7.15</b>	<b>984</b>	

Fe = mg/L      ORP = mV      DO = mg/L

Sample ID	Date	Time	Container Type	Preservative	Analytes	Analytic Method
<b>MW-1</b>	<b>1-23-03</b>	<b>12:50</b>	<b>SVOC</b>	<b>HCl</b>	<b>TPH, BTEX, MTBE</b>	<b>8015/8020</b>

WELL SAMPLING FORM

1

Project Name: <u>Bo Gin</u>	Cambria Mgr: <u>RAS</u>	Well ID: <u>MW-2</u>
Project Number: <u>230-0116</u>	Date: <u>1-23-03</u>	Well Yield:
Site Address: <u>706 Harrison St. Oakland, Ca</u>	Sampling Method: <u>Disposable Bailer</u>	Well Diameter: <u>2" pvc</u>
		Technician(s): <u>SA</u>
Initial Depth to Water: <u>17.51</u>	Total Well Depth: <u>25.50</u>	Water Column Height: <u>7.99</u>
Volume/ft: <u>0.16</u>	1 Casing Volume: <u>1.27</u>	3 Casing Volumes: <u>3.83</u>
Purging Device: <u>Disposable bailer</u>	Did Well Dewater?: <u>no</u>	Total Gallons Purged: <u>4</u>
Start Purge Time: <u>1:20</u>	Stop Purge Time: <u>1:24</u>	Total Time: <u>14 mins</u>

1 Casing Volume = Water column height x Volume/ft.

Well Diam.	Volume/ft (gallons)
2"	0.16
4"	0.65
6"	1.47

Time	Casing Volume	Temp. (°C)	pH	Cond. (uS)	Comments
<u>1:15</u>	<u>1.5</u>	<u>18.9</u>	<u>7.28</u>	<u>620</u>	
<u>1:20</u>	<u>3</u>	<u>18.9</u>	<u>7.15</u>	<u>645</u>	
<u>1:25</u>	<u>4</u>	<u>18.8</u>	<u>7.17</u>	<u>718</u>	

Fe = mg/L      ORP = mV      DO = mg/L

Sample ID	Date	Time	Container Type	Preservative	Analytes	Analytic Method
<u>MW-2</u>	<u>1-23-03</u>	<u>1:30</u>	<u>BVOA</u>	<u>HCl</u>	<u>TPM<sub>5</sub> BTEX MTBE</u>	<u>8015/8020</u>

WELL SAMPLING FORM

Project Name: <u>Bo Gin</u>	Cambria Mgr: <u>RAS</u>	Well ID: <u>MW-3</u>
Project Number: <u>230-0116</u>	Date: <u>1-23-03</u>	Well Yield:
Site Address: <u>706 Harrison St. Oakland, Ca</u>	Sampling Method: <u>Disposable Bailer</u>	Well Diameter: <u>2" pvc</u>
		Technician(s): <u>SA</u>
Initial Depth to Water: <u>15.48</u>	Total Well Depth: <u>27.55</u>	Water Column Height: <u>12.07</u>
Volume/ft: <u>0.16</u>	1 Casing Volume: <u>1.93</u>	3 Casing Volumes: <u>5.79</u>
Purging Device: <u>Disposable bailer</u>	Did Well Dewater?: <u>no</u>	Total Gallons Purged: <u>6</u>
Start Purge Time: <u>2:10</u>	Stop Purge Time: <u>2:24</u>	Total Time: <u>14 mins</u>

1 Casing Volume = Water column height x Volume/ft.

Well Diam.	Volume/ft (gallons)
2"	0.16
4"	0.65
6"	1.47

Time	Casing Volume	Temp. (°C)	pH	Cond. (uS)	Comments
<u>2:15</u>	<u>2</u>	<u>18.4</u>	<u>7.44</u>	<u>847</u>	
<u>2:20</u>	<u>4</u>	<u>18.7</u>	<u>7.25</u>	<u>1024</u>	
<u>2:25</u>	<u>6</u>	<u>18.8</u>	<u>7.21</u>	<u>1070</u>	

Fe =                      mg/L                      ORP =                      mV                      DO =                      mg/L

Sample ID	Date	Time	Container Type	Preservative	Analytes	Analytic Method
<u>MW-3</u>	<u>1-23-03</u>	<u>2:30</u>	<u>BVOA</u>	<u>HCl</u>	<u>TPM<sub>5</sub> BTEX MTBE</u>	<u>8015/8020</u>

WELL SAMPLING FORM

Project Name: <b>Bo Gin</b>	Cambria Mgr: <b>RAS</b>	Well ID: <b>MW-4</b>
Project Number: <b>230-0116</b>	Date: <b>1-23-03</b>	Well Yield:
Site Address: <b>706 Harrison St. Oakland, Ca</b>	Sampling Method: <b>Disposable Bailer</b>	Well Diameter: <b>2" pvc</b>
		Technician(s): <b>SA</b>
Initial Depth to Water: <b>17.74</b>	Total Well Depth: <b>25.40</b>	Water Column Height: <b>7.66</b>
Volume/ft: <b>0.16</b>	1 Casing Volume: <b>1.22</b>	3 Casing Volumes: <b>3.66</b>
Purging Device: <b>Disposable bailer</b>	Did Well Dewater?: <b>no</b>	Total Gallons Purged: <b>4</b>
Start Purge Time: <b>1:40</b>	Stop Purge Time: <b>1:54</b>	Total Time: <b>14 mins</b>

1 Casing Volume = Water column height x Volume/ft.

Well Diam.	Volume/ft (gallons)
2"	0.16
4"	0.65
6"	1.47

Time	Casing Volume	Temp. (°C)	pH	Cond. (uS)	Comments
<b>1:45</b>	<b>1.5</b>	<b>19.3</b>	<b>7.18</b>	<b>1112</b>	
<b>1:50</b>	<b>3</b>	<b>18.8</b>	<b>7.15</b>	<b>1195</b>	
<b>1:55</b>	<b>4</b>	<b>18.5</b>	<b>7.11</b>	<b>1242</b>	

Fe =                      mg/L                      ORP =                      mV                      DO =                      mg/L

Sample ID	Date	Time	Container Type	Preservative	Analytes	Analytic Method
<b>MW-4</b>	<b>1-23-03</b>	<b>2:00</b>	<b>3Voa</b>	<b>HCl</b>	<b>TPM, BTEX MTBE</b>	<b>8015/8020</b>

WELL SAMPLING FORM

Project Name: <b>Bo Gin</b>	Cambria Mgr: <b>RAS</b>	Well ID: <b>MW-5</b>
Project Number: <b>230-0116</b>	Date: <b>1-23-03</b>	Well Yield:
Site Address: <b>706 Harrison St. Oakland, Ca</b>	Sampling Method: <b>Disposable Bailer</b>	Well Diameter: <b>2" pvc</b>
		Technician(s): <b>SA</b>
Initial Depth to Water: <b>14.90</b>	Total Well Depth: <b>27.80</b>	Water Column Height: <b>12.9</b>
Volume/ft: <b>0.16</b>	1 Casing Volume: <b>2.06</b>	3 Casing Volumes: <b>6.18</b>
Purging Device: <b>Disposable bailer</b>	Did Well Dewater?: <b>no</b>	Total Gallons Purged: <b>6</b>
Start Purge Time: <b>2:40</b>	Stop Purge Time: <b>2:54</b>	Total Time: <b>14 mins</b>

1 Casing Volume = Water column height x Volume/ft.

Well Diam.	Volume/ft (gallons)
2"	0.16
4"	0.65
6"	1.47

Time	Casing Volume	Temp. (°C)	pH	Cond. (uS)	Comments
<b>2:45</b>	<b>2</b>	<b>19.1</b>	<b>7.05</b>	<b>614</b>	
<b>2:50</b>	<b>4</b>	<b>19.2</b>	<b>7.08</b>	<b>570</b>	
<b>2:55</b>	<b>6</b>	<b>19.2</b>	<b>7.10</b>	<b>595</b>	

Fe =                      mg/L                      ORP =                      mV                      DO =                      mg/L

Sample ID	Date	Time	Container Type	Preservative	Analytes	Analytic Method
<b>MW-5</b>	<b>1-23-03</b>	<b>3:00</b>	<b>BVOA</b>	<b>HCl</b>	<b>TPM<sub>5</sub> BTEX MTBE</b>	<b>8015/8020</b>

WELL SAMPLING FORM

Project Name: <b>Bo Gin</b>	Cambria Mgr: <b>RAS</b>	Well ID: <b>MW-6</b>
Project Number: <b>230-0116</b>	Date: <b>1-23-03</b>	Well Yield:
Site Address: <b>706 Harrison St. Oakland, Ca</b>	Sampling Method: <b>Disposable Bailer</b>	Well Diameter: <b>2" pvc</b>
		Technician(s): <b>SA</b>
Initial Depth to Water: <b>16.03</b>	Total Well Depth: <b>25.85</b>	Water Column Height: <b>9.82</b>
Volume/ft: <b>0.16</b>	1 Casing Volume: <b>1.57</b>	3 Casing Volumes: <b>4.71</b>
Purging Device: <b>Disposable bailer</b>	Did Well Dewater?: <b>NO</b>	Total Gallons Purged: <b>5</b>
Start Purge Time: <b>3:10</b>	Stop Purge Time: <b>3:24</b>	Total Time: <b>14 mins</b>

1 Casing Volume = Water column height x Volume/ ft.

Well Diam.	Volume/ft (gallons)
2"	0.16
4"	0.65
6"	1.47

Time	Casing Volume	Temp. (°C)	pH	Cond. (uS)	Comments
<b>3:15</b>	<b>15</b>	<b>18.9</b>	<b>7.28</b>	<b>1095</b>	
<b>3:20</b>	<b>3</b>	<b>18.8</b>	<b>7.35</b>	<b>872</b>	
<b>3:25</b>	<b>5</b>	<b>18.9</b>	<b>7.31</b>	<b>740</b>	

Fe =                      mg/L                      ORP =                      mV                      DO =                      mg/L

Sample ID	Date	Time	Container Type	Preservative	Analytes	Analytic Method
<b>MW-6</b>	<b>1-23-03</b>	<b>3:30</b>	<b>BVOA</b>	<b>HCl</b>	<b>TPH, BTEX MTBE</b>	<b>8015/8020</b>



WELL SAMPLING FORM

Project Name: <u>Bo Gin</u>	Cambria Mgr: <u>RAS</u>	Well ID: <u>MW-7</u>
Project Number: <u>230-0116</u>	Date: <u>1-23-03</u>	Well Yield:
Site Address: <u>706 Harrison St. Oakland, Ca</u>	Sampling Method: <u>Disposable Bailer</u>	Well Diameter: <u>2" pvc</u>
		Technician(s): <u>SA</u>
Initial Depth to Water: <u>15.70</u>	Total Well Depth: <u>27.50</u>	Water Column Height: <u>11.80</u>
Volume/ft: <u>0.16</u>	1 Casing Volume: <u>1.88</u>	3 Casing Volumes: <u>5.66</u>
Purging Device: <u>Disposable bailer</u>	Did Well Dewater?: <u>NO</u>	Total Gallons Purged: <u>6</u>
Start Purge Time: <u>3:40</u>	Stop Purge Time: <u>3:54</u>	Total Time: <u>14 mins</u>

1 Casing Volume = Water column height x Volume/ft.

Well Diam.	Volume/ft (gallons)
2"	0.16
4"	0.65
6"	1.47

Time	Casing Volume	Temp. (°C)	pH	Cond. (uS)	Comments
<u>3:45</u>	<u>2</u>	<u>18.7</u>	<u>7.29</u>	<u>1271</u>	
<u>3:50</u>	<u>4</u>	<u>18.8</u>	<u>7.30</u>	<u>1495</u>	
<u>3:55</u>	<u>6</u>	<u>18.9</u>	<u>7.34</u>	<u>1520</u>	

Fe =                      mg/L                      ORP =                      mV                      DO =                      mg/L

Sample ID	Date	Time	Container Type	Preservative	Analytes	Analytic Method
<u>MW-7</u>	<u>1-23-03</u>	<u>4:00</u>	<u>BVOA</u>	<u>HCl</u>	<u>TPM<sub>3</sub> BTEX MTBE</u>	<u>8015/8020</u>

C A M B R I A



**ATTACHMENT B**

Laboratory Analytical Report



McC Campbell Analytical Inc.

110 2nd Avenue South, #D7, Pacheco, CA 94553-5560  
Telephone : 925-798-1620 Fax : 925-798-1622  
<http://www.mccampbell.com> E-mail: [main@mccampbell.com](mailto:main@mccampbell.com)

Cambria Env. Technology 6262 Hollis St. Emeryville, CA 94608	Client Project ID: #230-0116; BoGin	Date Sampled: 01/23/03
		Date Received: 01/24/03
	Client Contact: Ron Scheele	Date Reported: 01/29/03
	Client P.O.:	Date Completed: 01/29/03

**WorkOrder: 0301312**

January 29, 2003

Dear Ron:

Enclosed are:

- 1). the results of 7 analyzed samples from your **#230-0116; BoGin project**,
- 2). a QC report for the above samples
- 3). a copy of the chain of custody, and
- 4). a bill for analytical services.

All analyses were completed satisfactorily and all QC samples were found to be within our control limits.

If you have any questions please contact me. McC Campbell Analytical Laboratories strives for excellence in quality, service and cost. Thank you for your business and I look forward to working with you again.

Yours truly,

Angela Rydelius, Lab Manager



McC Campbell Analytical Inc.

110 2nd Avenue South, #D7, Pacheco, CA 94553-5560  
 Telephone : 925-798-1620 Fax : 925-798-1622  
 http://www.mcccampbell.com E-mail: main@mcccampbell.com

Cambria Env. Technology  6262 Hollis St.  Emeryville, CA 94608	Client Project ID: #230-0116; BoGin	Date Sampled: 01/23/03
		Date Received: 01/24/03
	Client Contact: Ron Scheele	Date Extracted: 01/24/03-01/27/03
	Client P.O.:	Date Analyzed: 01/24/03-01/27/03

**Gasoline Range (C6-C12) Volatile Hydrocarbons as Gasoline with BTEX and MTBE\***

Extraction method: SW5030B

Analytical methods: SW8021B/8015Cm

Work Order: 0301312

Lab ID	Client ID	Matrix	TPH(g)	MTBE	Benzene	Toluene	Ethylbenzene	Xylenes	DF	% SS
001A	MW-1	W	ND	ND	ND	ND	ND	ND	1	97.2
002A	MW-2	W	40,000,a	ND<1000	1900	7800	1200	5600	200	117
003A	MW-3	W	ND	ND	ND	ND	ND	ND	1	117
004A	MW-4	W	ND	ND	0.52	4.1	ND	1.9	1	112
005A	MW-5	W	ND	ND	20	ND	ND	ND	1	113
006A	MW-6	W	ND	ND	21	ND	ND	ND	1	116
007A	MW-7	W	ND	ND	23	ND	ND	ND	1	118

Reporting Limit for DF =1; ND means not detected at or above the reporting limit	W	50	5.0	0.5	0.5	0.5	0.5	1	µg/L
	S	NA	NA	NA	NA	NA	NA	1	mg/Kg

\*water and vapor samples are reported in µg/L, soil and sludge samples in mg/kg, wipe samples in µg/wipe, and TCLP extracts in µg/L.  
 # cluttered chromatogram; sample peak coelutes with surrogate peak.  
 +The following descriptions of the TPH chromatogram are cursory in nature and McC Campbell Analytical is not responsible for their interpretation: a) unmodified or weakly modified gasoline is significant; b) heavier gasoline range compounds are significant(aged gasoline?); c) lighter gasoline range compounds (the most mobile fraction) are significant; d) gasoline range compounds having broad chromatographic peaks are significant; biologically altered gasoline?; e) TPH pattern that does not appear to be derived from gasoline (stoddard solvent / mineral spirit?); f) one to a few isolated non-target peaks present; g) strongly aged gasoline or diesel range compounds are significant; h) lighter than water immiscible sheen/product is present; i) liquid sample that contains greater than ~2 vol. % sediment; j) reporting limit raised due to high MTBE content; k) TPH pattern that does not appear to be derived from gasoline (aviation gas). m) no recognizable pattern.

DHS Certification No. 1644

Angela Rydelius, Lab Manager



McC Campbell Analytical Inc.

110 2nd Avenue South, #D7, Pacheco, CA 94553-5560  
 Telephone : 925-798-1620 Fax : 925-798-1622  
 http://www.mccampbell.com E-mail: main@mccampbell.com

### QC SUMMARY REPORT FOR SW8021B/8015Cm

Matrix: W

WorkOrder: 0301312

EPA Method: SW8021B/8015Cm		Extraction: SW5030B		BatchID: 5715		Spiked Sample ID: 0301312-001A				
Compound	Sample	Spiked	MS*	MSD*	MS-MSD*	LCS	LCSD	LCS-LCSD	Acceptance Criteria (%)	
	µg/L	µg/L	% Rec.	% Rec.	% RPD	% Rec.	% Rec.	% RPD	Low	High
TPH(gas)	ND	60	107	110	2.63	111	111	0.303	80	120
MTBE	ND	10	106	103	2.61	94.7	96	1.33	80	120
Benzene	ND	10	111	112	1.37	110	110	0.375	80	120
Toluene	ND	10	107	109	1.81	110	109	0.430	80	120
Ethylbenzene	ND	10	104	107	2.21	108	107	0.733	80	120
Xylenes	ND	30	100	107	6.45	110	110	0	80	120
%SS:	97.2	100	94	94.8	0.897	94.5	95.8	1.39	80	120

All target compounds in the Method Blank of this extraction batch were ND less than the method RL with the following exceptions:  
 NONE

MS = Matrix Spike; MSD = Matrix Spike Duplicate; LCS = Laboratory Control Sample; LCSD = Laboratory Control Sample Duplicate; RPD = Relative Percent Deviation.

N/A = not enough sample to perform matrix spike and matrix spike duplicate.

NR = analyte concentration in sample exceeds spike amount for soil matrix or exceeds 2x spike amount for water matrix or sample diluted due to high matrix or analyte content.

% Recovery =  $100 * (MS - Sample) / (Amount\ Spiked)$ ; RPD =  $100 * (MS - MSD) / (MS + MSD) * 2$ .

\* MS and / or MSD spike recoveries may not be near 100% or the RPDs near 0% if: a) the sample is inhomogenous AND contains significant concentrations of analyte relative to the amount spiked, or b) if that specific sample matrix interferes with spike recovery.

**McC Campbell Analytical Inc.**



110 Second Avenue South, #D7  
 Pacheco, CA 94553-5560  
 (925) 798-1620

**CHAIN-OF-CUSTODY RECORD**

WorkOrder: 0301312

Client:

Cambria Env. Technology  
 6262 Hollis St.  
 Emeryville, CA 94608

TEL: (510) 450-1983  
 FAX: (510) 450-8295  
 ProjectNo: #230-0116; BoGin  
 PO:

Date Received: 1/24/03

Date Printed: 1/24/03

Sample ID	ClientSampID	Matrix	Collection Date	Hold	Requested Tests			
					8021B/8015			
0301312-001	MW-1	Water	1/23/03 12:50:00 PM		A			
0301312-002	MW-2	Water	1/23/03 1:30:00 PM		A			
0301312-003	MW-3	Water	1/23/03 2:30:00 PM		A			
0301312-004	MW-4	Water	1/23/03 2:00:00 PM		A			
0301312-005	MW-5	Water	1/23/03 3:00:00 PM		A			
0301312-006	MW-6	Water	1/23/03 3:30:00 PM		A			
0301312-007	MW-7	Water	1/23/03 4:00:00 PM		A			

Prepared by: Maria Venegas

Comments:

NOTE: Samples are discarded 60 days after results are reported unless other arrangements are made. Hazardous samples will be returned to client or disposed of at client expense.

0301312

**McCAMPBELL ANALYTICAL INC.**

110 2<sup>nd</sup> AVENUE SOUTH, #D7  
PACHECO, CA 94553-5560

Telephone: (925) 798-1620

Fax: (925) 798-1622

**CHAIN OF CUSTODY RECORD**

TURN AROUND TIME:

RUSH 24 HOUR 48 HOUR 5 DAY

EDF Required?  Yes  No

Report To: **Ron Scheels** Bill To: **Cambria Env. Tech**

Company: Cambria Environmental Technology Inc.

6262 Hollis Street

Emeryville, CA 94608

E-mail:

Tele: 510-450-1983

Fax: 510-450-8295

Project #: **230-0116**

Project Name: **BoGin**

Project Location: **706 Harrison St. Oakland, Ca**

Sampler Signature: *R. Hill*

**Analysis Request**

**Other**

**Comments**

BTEX & TPH as Gas (602/8020 + 8015)/ MTBE	
TPH as Diesel (8015)	
Total Petroleum Oil & Grease (5520 E&F/B&F)	
Total Petroleum Hydrocarbons (418.1)	
EPA 601 / 8010	
BTEX ONLY (EPA 602 / 8020)	
EPA 608 / 8080	
EPA 608 / 8080 PCB's ONLY	
EPA 624 / 8240 / 8260	
EPA 625 / 8270	
PAH's / PNA's by EPA 625 / 8270 / 8310	
CAM-17 Metals	
LUFT 5 Metals	
Lead (7240/7421/239.2/6010)	
RCI	

confirm all MTBE hits w/EPA method 8260

SAMPLE ID (Field Point Name)	LOCATION	SAMPLING		# Containers	Type Containers	MATRIX					METHOD PRESERVED								
		Date	Time			Water	Soil	Air	Sludge	Other	Ice	HCl	HNO <sub>3</sub>	Other					
+ MW-1		1-23-03	12:50	3	VOG	X					X	X		X					
+ MW-2		1-23-03	1:30	3	VOG	X					X	X		X					
+ MW-3		1-23-03	2:30	3	VOG	X					X	X		X					
+ MW-4		1-23-03	2:00	3	VOG	X					X	X		X					
+ MW-5		1-23-03	3:00	3	VOG	X					X	X		X					
+ MW-6		1-23-03	3:30	3	VOG	X					X	X		X					
+ MW-7		1-23-03	4:00	3	VOG	X					X	X		X					

Relinquished By: *R. Hill* Date: 1-24-03 Time: 5:00 Received By: Secure location

Relinquished By: *[Signature]* Date: 1/24/03 Time: 10:30am Received By: *[Signature]* 240

Relinquished By: *HAROLD 240* Date: 1-24 Time: 1420 Received By: *[Signature]*

Remarks:

ICEP:  GOOD CONDITION  HEAD SPACE ABSENT  DECHLORINATED IN LAB

PRESERVATION APPROPRIATE  CONTAINERS PRESERVED IN LAB

VOG  OAG  METALS  OTHER



McC Campbell Analytical Inc.

110 2nd Avenue South, #D7, Pacheco, CA 94553-5560  
Telephone : 925-798-1620 Fax : 925-798-1622  
<http://www.mccampbell.com> E-mail: [main@mccampbell.com](mailto:main@mccampbell.com)

Cambria Env. Technology 5900 Hollis St, Suite A Emeryville, CA 94608	Client Project ID: #230-0116; Bo Gin	Date Sampled: 03/06/03
		Date Received: 03/07/03
	Client Contact: Matt Meyers	Date Reported: 03/11/03
	Client P.O.:	Date Completed: 03/11/03

**WorkOrder: 0303098**

March 11, 2003

Dear Matt:

Enclosed are:

- 1). the results of 2 analyzed samples from your #230-0116; Bo Gin project,
- 2). a QC report for the above samples
- 3). a copy of the chain of custody, and
- 4). a bill for analytical services.

All analyses were completed satisfactorily and all QC samples were found to be within our control limits.

If you have any questions please contact me. McC Campbell Analytical Laboratories strives for excellence in quality, service and cost. Thank you for your business and I look forward to working with you again.

Yours truly,

Angela Rydelius, Lab Manager







**QC SUMMARY REPORT FOR SW8021B/8015Cm**

Matrix: W

WorkOrder: 0303098

EPA Method: SW8021B/8015Cm		Extraction: SW5030B		BatchID: 6096		Spiked Sample ID: 0303098-001A				
Compound	Sample	Spiked	MS*	MSD*	MS-MSD*	LCS	LCSD	LCS-LCSD	Acceptance Criteria (%)	
	µg/L	µg/L	% Rec.	% Rec.	% RPD	% Rec.	% Rec.	% RPD	Low	High
TPH(gas)	ND	60	115	106	8.84	109	114	4.64	80	120
MTBE	ND	10	88.5	86.9	1.81	90	86.7	3.65	80	120
Benzene	ND	10	115	115	0.322	96.7	95.4	1.32	80	120
Toluene	ND	10	111	110	0.940	91.2	90.9	0.410	80	120
Ethylbenzene	ND	10	116	118	1.72	93.3	91.5	1.97	80	120
Xylenes	ND	30	120	117	2.82	91.7	88	4.08	80	120
%SS:	110	100	109	109	0.695	101	95.5	5.33	80	120

All target compounds in the Method Blank of this extraction batch were ND less than the method RL with the following exceptions:  
 NONE

MS = Matrix Spike; MSD = Matrix Spike Duplicate; LCS = Laboratory Control Sample; LCSD = Laboratory Control Sample Duplicate; RPD = Relative Percent Deviation.

N/A = not enough sample to perform matrix spike and matrix spike duplicate.

NR = analyte concentration in sample exceeds spike amount for soil matrix or exceeds 2x spike amount for water matrix or sample diluted due to high matrix or analyte content.

% Recovery =  $100 * (MS - Sample) / (Amount\ Spiked)$ ; RPD =  $100 * (MS - MSD) / (MS + MSD) * 2$ .

\* MS and / or MSD spike recoveries may not be near 100% or the RPDs near 0% if: a) the sample is inhomogenous AND contains significant concentrations of analyte relative to the amount spiked, or b) if that specific sample matrix interferes with spike recovery.

**McC Campbell Analytical Inc.**



110 Second Avenue South, #D7  
Pacheco, CA 94553-5560  
(925) 798-1620

**CHAIN-OF-CUSTODY RECORD**

WorkOrder: 0303098

**Client:**

Cambria Env. Technology  
5900 Hollis St, Suite A  
Emeryville, CA 94608

TEL: (510) 450-1983  
FAX: (510) 450-8295  
ProjectNo: #230-0116; Bo Gin  
PO:

Date Received: 3/7/03

Date Printed: 3/7/03

Sample ID	ClientSampID	Matrix	Collection Date	Hold	<>	8021B/8015	Requested Tests
0303098-001	VW-4	Water	3/6/03 1:50:00 PM		A	A	
0303098-002	VW-3	Water	3/6/03 2:00:00 PM			A	

Prepared by: Melissa Valles

**Comments:**

NOTE: Samples are discarded 60 days after results are reported unless other arrangements are made. Hazardous samples will be returned to client or disposed of at client expense.

0303098

**McCAMPBELL ANALYTICAL INC.**

110 2<sup>nd</sup> AVENUE SOUTH, #D7  
PACHECO, CA 94553-5560

Telephone: (925) 798-1620

Fax: (925) 798-1622

**CHAIN OF CUSTODY RECORD**

TURN AROUND TIME:

RUSH 24 HOUR 48 HOUR 5 DAY

EDF Required?  Yes  No

Report To: Matt Meyers Bill To: SAME  
Company: Cambria Environmental Technology, Inc.  
5900 Hollis Street Suite A  
Emeryville, Ca 94608 E-mail: mmeyers@cambria-env.com  
Tele: 510 420-3314 Fax: 510 420-9170  
Project #: 230-0116 Project Name: Bo Gin  
Project Location: 706 Harrison Street, Oakland, Ca  
Sampler Signature: *[Signature]*

Analysis Request Other Comments

SAMPLE ID (Field Point Name)	LOCATION	SAMPLING		# Containers	Type Containers	MATRIX					METHOD PRESERVED				BTEX & TPH as Gas (602/8020 + 801.5) MTBE	TPH as Diesel (801.5)	Total Petroleum Oil & Grease (5520 E&F/B&F)	Total Petroleum Hydrocarbons (41 & 1)	EPA 601 / 8010	BTEX ONLY (EPA 602 / 8020)	EPA 608 / 8080	EPA 608 / 8080 PCB's ONLY	EPA 624 / 8240 / 8260	EPA 625 / 8270	PAH's / PNA's by EPA 625 / 8270 / 8310	CAM-17 Metals	LUFT 5 Metals	Lead (7240/7421/7239.2/6010)	RCI	<i>[Handwritten]</i>				
		Date	Time			Water	Soil	Air	Sludge	Other	Ice	HCl	HNO <sub>3</sub>	Other																				
VW-4	Well	3/6/03	1:50p	4	V	X					X	X																						
VW-3	Well	3/6/03	2:00p	4	V	X					X	X																						

ICPA\*  PRESERVATION APPROPRIATE CONTAINERS PRESERVED IN LAB  
VOLAS  OAG  METALS  OTHER

Relinquished By: *[Signature]* Date: 3/6/03 Time: 7pm Received By: *[Signature]*  
Relinquished By: *[Signature]* Date: 3/7 Time: 2:45 Received By: *[Signature]*

Remarks: Analyze MTBE by EPA 8260. If there's a hit for mthd by 8020  
Please email results.



McC Campbell Analytical Inc.

110 2nd Avenue South, #D7, Pacheco, CA 94553-5560  
Telephone : 925-798-1620 Fax : 925-798-1622  
<http://www.mccampbell.com> E-mail: [main@mccampbell.com](mailto:main@mccampbell.com)

Cambria Env. Technology 5900 Hollis St, Suite A Emeryville, CA 94608	Client Project ID: #230-0116; Bo Gin	Date Sampled: 03/25/03
		Date Received: 03/26/03
	Client Contact: Matt Meyers	Date Reported: 04/01/03
	Client P.O.:	Date Completed: 04/01/03

**WorkOrder: 0303452**

April 01, 2003

Dear Matt:

Enclosed are:

- 1). the results of 2 analyzed samples from your #230-0116; Bo Gin project,
- 2). a QC report for the above samples
- 3). a copy of the chain of custody, and
- 4). a bill for analytical services.

All analyses were completed satisfactorily and all QC samples were found to be within our control limits.

If you have any questions please contact me. McC Campbell Analytical Laboratories strives for excellence in quality, service and cost. Thank you for your business and I look forward to working with you again.

Yours truly,

Angela Rydelius, Lab Manager





**QC SUMMARY REPORT FOR SW8021B/8015Cm**

Matrix: W

WorkOrder: 0303452

EPA Method: SW8021B/8015Cm		Extraction: SW5030B		BatchID: 6331			Spiked Sample ID: N/A			
Compound	Sample	Spiked	MS*	MSD*	MS-MSD*	LCS	LCSD	LCS-LCSD	Acceptance Criteria (%)	
	µg/L	µg/L	% Rec.	% Rec.	% RPD	% Rec.	% Rec.	% RPD	Low	High
TPH(gas)	N/A	60	N/A	N/A	N/A	94.9	94.8	0.0628	80	120
MTBE	N/A	10	N/A	N/A	N/A	99	113	12.9	80	120
Benzene	N/A	10	N/A	N/A	N/A	115	119	3.09	80	120
Toluene	N/A	10	N/A	N/A	N/A	112	116	2.66	80	120
Ethylbenzene	N/A	10	N/A	N/A	N/A	116	118	2.37	80	120
Xylenes	N/A	30	N/A	N/A	N/A	113	117	2.90	80	120
%SS:	N/A	100	N/A	N/A	N/A	91.5	91.8	0.356	80	120

All target compounds in the Method Blank of this extraction batch were ND less than the method RL with the following exceptions:  
 NONE

MS = Matrix Spike; MSD = Matrix Spike Duplicate; LCS = Laboratory Control Sample; LCSD = Laboratory Control Sample Duplicate; RPD = Relative Percent Deviation.

N/A = not enough sample to perform matrix spike and matrix spike duplicate.

NR = analyte concentration in sample exceeds spike amount for soil matrix or exceeds 2x spike amount for water matrix or sample diluted due to high matrix or analyte content.

$\% \text{ Recovery} = 100 * (\text{MS} - \text{Sample}) / (\text{Amount Spiked}); \text{RPD} = 100 * (\text{MS} - \text{MSD}) / (\text{MS} + \text{MSD}) * 2.$

\* MS and / or MSD spike recoveries may not be near 100% or the RPDs near 0% if: a) the sample is inhomogenous AND contains significant concentrations of analyte relative to the amount spiked, or b) if that specific sample matrix interferes with spike recovery.



### QC SUMMARY REPORT FOR SW8021B/8015Cm

Matrix: W

WorkOrder: 0303452

EPA Method: SW8021B/8015Cm		Extraction: SW5030B		BatchID: 6333			Spiked Sample ID: N/A			
Compound	Sample	Spiked	MS*	MSD*	MS-MSD*	LCS	LCSD	LCS-LCSD	Acceptance Criteria (%)	
	µg/L	µg/L	% Rec.	% Rec.	% RPD	% Rec.	% Rec.	% RPD	Low	High
TPH(gas)	N/A	60	N/A	N/A	N/A	110	111	0.564	80	120
MTBE	N/A	10	N/A	N/A	N/A	94.9	94.4	0.525	80	120
Benzene	N/A	10	N/A	N/A	N/A	102	96.1	6.38	80	120
Toluene	N/A	10	N/A	N/A	N/A	97.5	90.8	7.12	80	120
Ethylbenzene	N/A	10	N/A	N/A	N/A	96	90.3	6.10	80	120
Xylenes	N/A	30	N/A	N/A	N/A	89	84	5.78	80	120
%SS:	N/A	100	N/A	N/A	N/A	87.9	83.3	5.30	80	120

All target compounds in the Method Blank of this extraction batch were ND less than the method RL with the following exceptions:  
 NONE

MS = Matrix Spike; MSD = Matrix Spike Duplicate; LCS = Laboratory Control Sample; LCSD = Laboratory Control Sample Duplicate; RPD = Relative Percent Deviation.

N/A = not enough sample to perform matrix spike and matrix spike duplicate.

NR = analyte concentration in sample exceeds spike amount for soil matrix or exceeds 2x spike amount for water matrix or sample diluted due to high matrix or analyte content.

% Recovery =  $100 * (MS - Sample) / (Amount Spiked)$ ; RPD =  $100 * (MS - MSD) / (MS + MSD) * 2$ .

\* MS and / or MSD spike recoveries may not be near 100% or the RPDs near 0% if: a) the sample is inhomogenous AND contains significant concentrations of analyte relative to the amount spiked, or b) if that specific sample matrix interferes with spike recovery.



**McC Campbell Analytical Inc.**



110 Second Avenue South, #D7  
Pacheco, CA 94553-5560  
(925) 798-1620

**CHAIN-OF-CUSTODY RECORD**

WorkOrder: 0303452

**Client:**

Cambria Env. Technology  
5900 Hollis St, Suite A  
Emeryville, CA 94608

TEL: (510) 450-1983  
FAX: (510) 450-8295  
ProjectNo: #230-0116; Bo Gin  
PO:

Date Received: 3/26/03  
Date Printed: 3/26/03

Sample ID	ClientSampleID	Matrix	Collection Date	Hold	<>	8021B/8015	Requested Tests
0303452-001	VW-3	Water	3/25/03 2:00:00 PM		A	A	
0303452-002	VW-4	Water	3/25/03 2:15:00 PM			A	

Prepared by: Maria Venegas

**Comments:**

NOTE: Samples are discarded 60 days after results are reported unless other arrangements are made. Hazardous samples will be returned to client or disposed of at client expense.

0363452

McCAMPBELL ANALYTICAL INC.

110 2<sup>nd</sup> AVENUE SOUTH, #D7  
PACHECO, CA 94553-5560

Telephone: (925) 798-1620

Fax: (925) 798-1622

CHAIN OF CUSTODY RECORD

TURN AROUND TIME:

RUSH 24 HOUR 48 HOUR 5 DAY

EDF Required?  Yes  No

Report To: MATT MEYERS Bill To: SAME  
Company: Cambria Environmental Technology Inc.  
5900 Hollis Street STE-A  
Emeryville, CA 94608 E-mail: MMeyers@Cambria-env.com  
Tele: 510-420-3314 Fax: 510-420-9170  
Project #: 230-0116 Project Name: BO GIN  
Project Location: 706 HARRISON ST OAKLAND  
Sampler Signature: [Signature]

Analysis Request

Other

Comments

SAMPLE ID (Field Point Name)	LOCATION	SAMPLING		# Containers	Type Containers	MATRIX					METHOD PRESERVED								
		Date	Time			Water	Soil	Air	Sludge	Other	Ice	HCl	HNO <sub>3</sub>	Other					
+99 VW-3	BOGIN	3/25/03	2pm	4	VOL X							X	X						
VW-4	BOGIN	3/25/03	2:15pm	4	VOL X							X	X						

BTEX & TPH as Gas (602/8020 + 8015)/MTBE	TPH as Diesel (8015)	Total Petroleum Oil & Grease (5320 E&F/B&F)	Total Petroleum Hydrocarbons (418.1)	EPA 601 / 8010	BTEX ONLY (EPA 602 / 8020)	EPA 608 / 8080	EPA 608 / 8080 PCB's ONLY	EPA 624 / 8240 / 8260	EPA 625 / 8270	PAH's / PNA's by EPA 625 / 8270 / 8310	CAM-17 Metals	LUFT 5 Metals	Lead (7240/7421/239.2/6010)	RCI
--	----------------------	---	--------------------------------------	----------------	----------------------------	----------------	---------------------------	-----------------------	----------------	--	---------------	---------------	-----------------------------	-----

ICEM  PRESERVATION   
 CONTAINERS  RESERVED IN LAB   
 VOAS | O&G | METALS | OTHER

Relinquished By: [Signature] Date: 3/25/03 Time: 4pm Received By: Sealed location  
 Relinquished By: #218 Date: 3/26/03 Time: 11:05 Received By: [Signature] #218 ULTRA EX  
 Relinquished By: [Signature] Date: 3/26/03 Time: 12:30 Received By: [Signature]

Remarks: CONFIRM MTBE DETECTIONS BY EPA 8260.

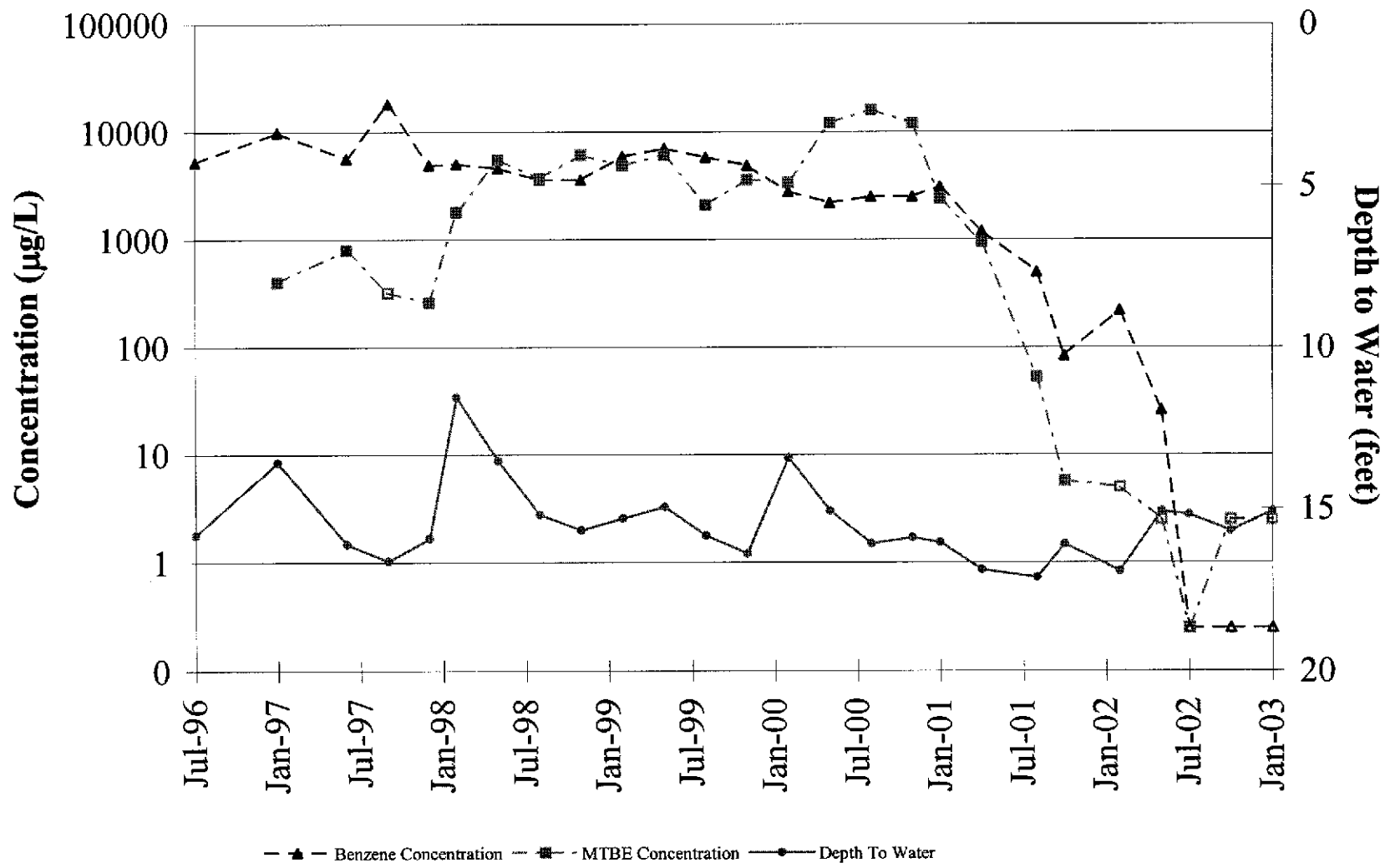
C A M B R I A



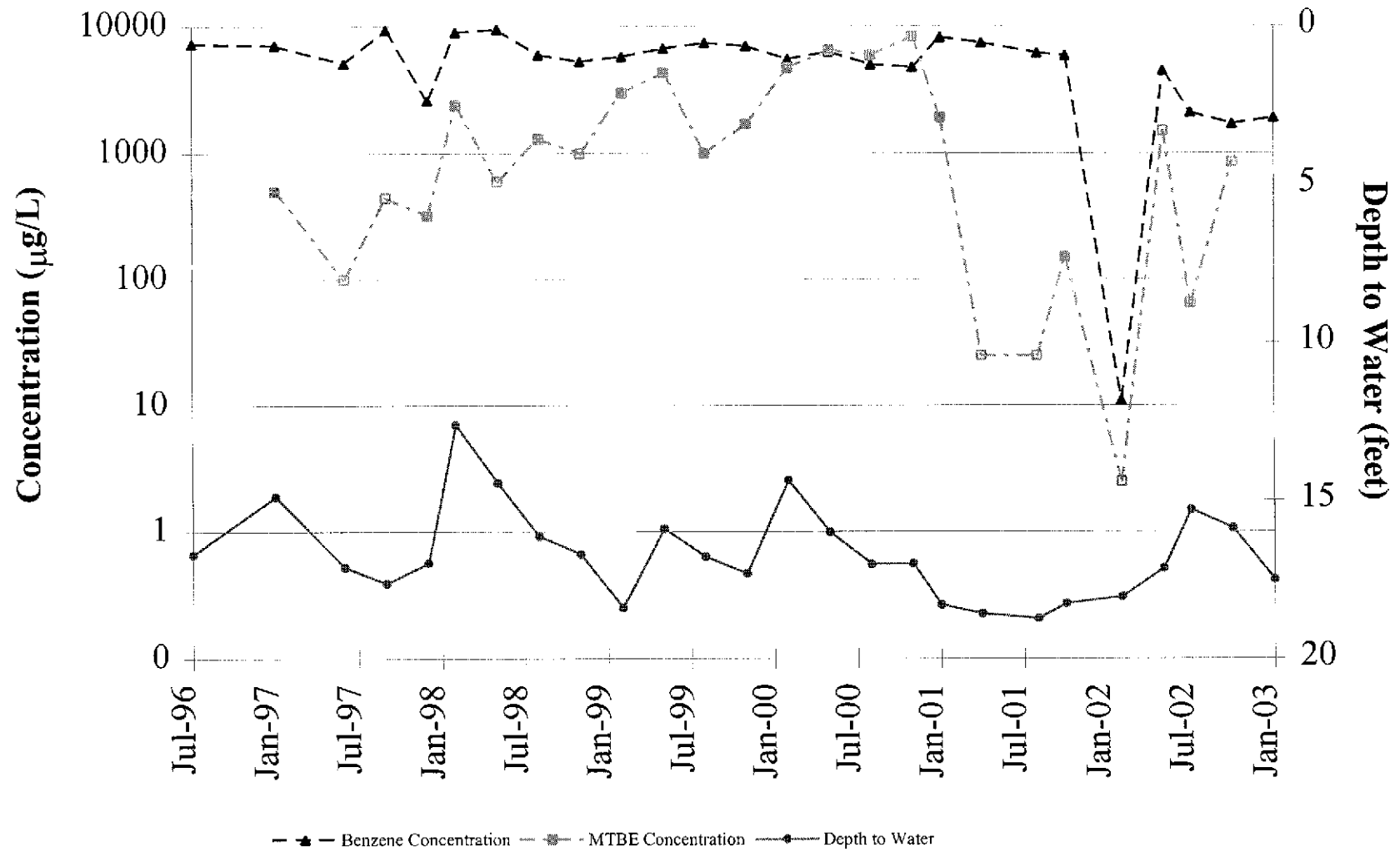
**ATTACHMENT C**

Benzene and MTBE Concentration Graphs

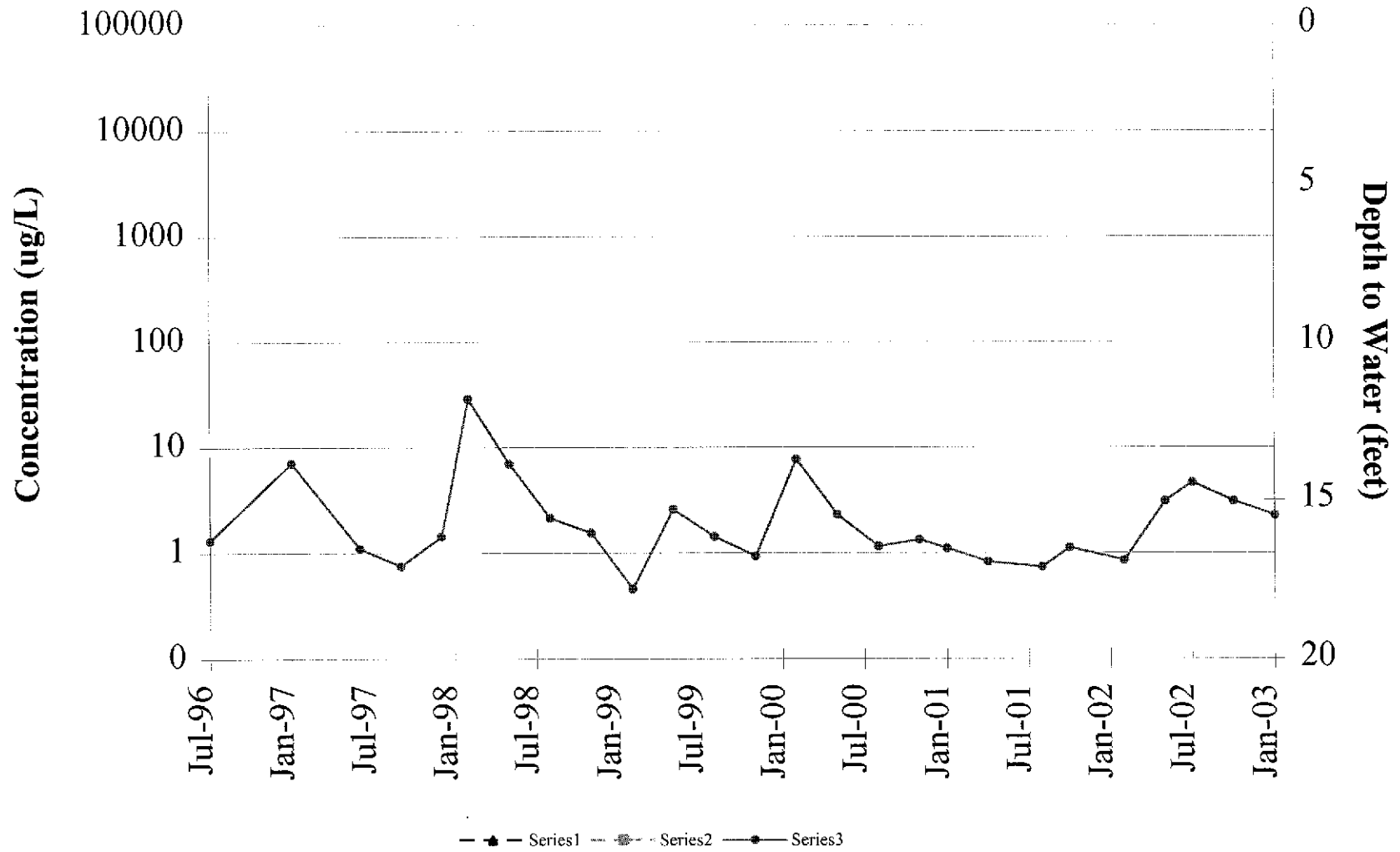
## Benzene and MTBE Concentration Trends Well MW-1



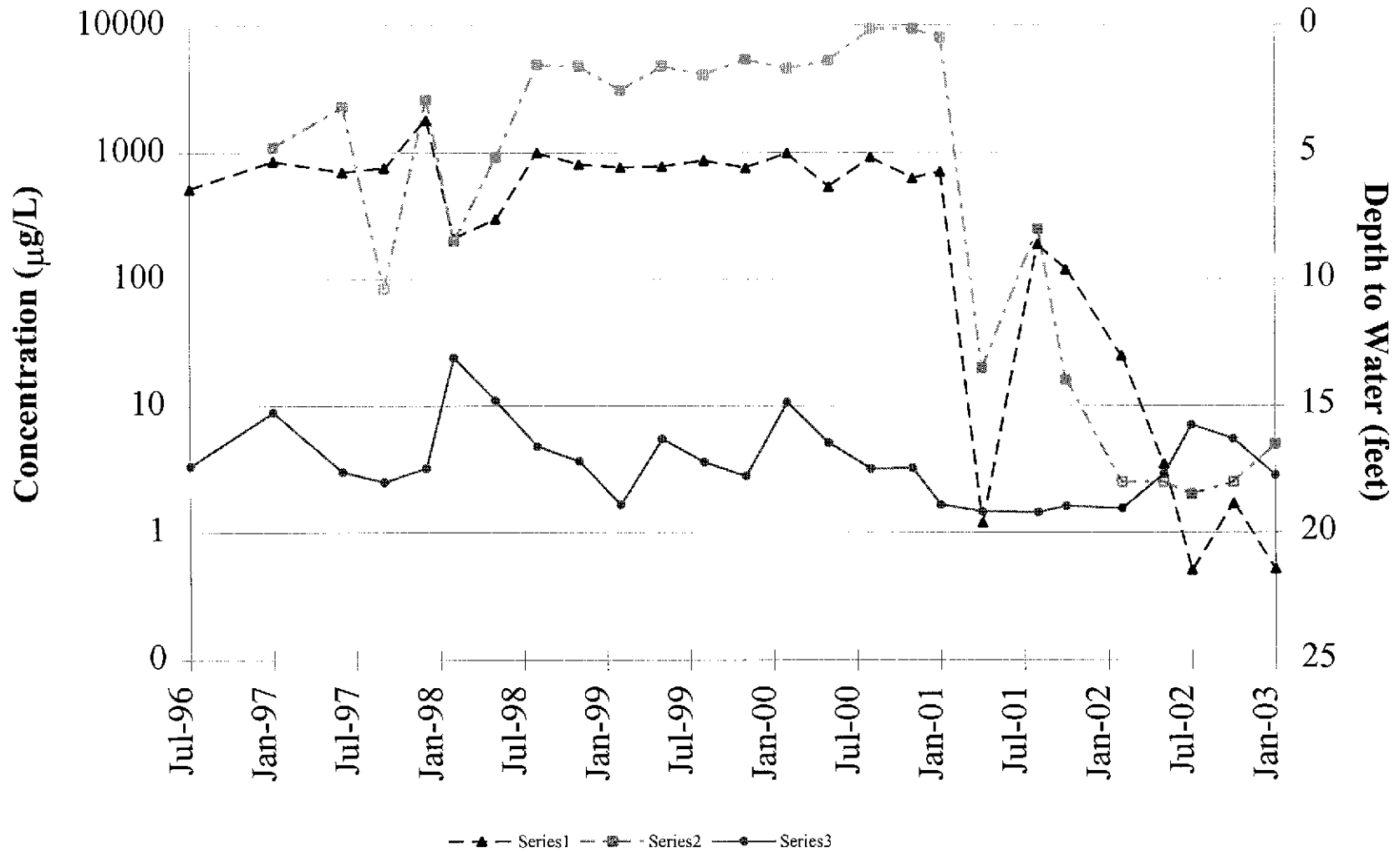
## Benzene and MTBE Concentration Trends Well MW-2



# Benzene and MTBE Concentration Trends Well MW-3



## Benzene and MTBE Concentration Trends Well MW-4



C A M B R I A



**ATTACHMENT D**

Electronic Delivery Confirmations



## AB2886 Electronic Delivery

[Main Menu](#) | [View/Add Facilities](#) | [Upload EDD](#) | [Check EDD](#)

Your EDF file has been successfully uploaded!

**Confirmation Number:** 9626154780

**Date/Time of Submittal:** 4/9/2003 11:16:46 AM

**Facility Global ID:** T0600100985

**Facility Name:** OAKLAND AUTO PARTS

**Submittal Title:** 1st Qtr 2003 Groundwater Sampling Results

**Submittal Type:** GW Monitoring Report

Logged in as CAMBRIA-EM (AUTH\_RP)

CONTACT SITE ADMINISTRATOR.

## AB2886 Electronic Delivery

[Main Menu](#) | [View/Add Facilities](#) | [Upload EDD](#) | [Check EDD](#)

### UPLOADING A GEO\_WELL FILE

**Processing is complete. No errors were found!  
Your file has been successfully submitted!**

**Submittal Title:** 1st Qtr 2003, Groundwater Depths for Bo Gin Site

**Submittal Date/Time:** 4/9/2003 11:22:54 AM

**Confirmation Number:** 2503819108

[Back to Main Menu](#)

Logged in as CAMBRIA-EM (AUTH\_RP)

[CONTACT SITE ADMINISTRATOR.](#)