



Miller Environmental Company, Inc.

Engineering • Geology • Construction

December 9, 1992

Alameda County Environmental Health
80 Swan Way, Room 200
Oakland, CA 94621

Attn: **Jennifer Eberle**

Re: **STID 3749**

Dear Jennifer:

Per our telephone conversation today, I am sending you copies of the analytical results for the Bo Gin/Oakland Auto Parts project at 706 Harrison St., Oakland, CA.

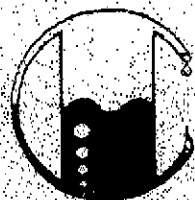
Sincerely,
Miller Environmental Co., Inc.

Darin J. Reinholdt

Darin J. Reinholdt

870 ppm TPH-g } B11-10' (deepest
.43 ppm benz } sample)

300 ppm waste oil SP3



MOBILE CHEM LABS INC.

5021 Blum Road, Suite 3 • Martinez, CA 94553
 Phone (415) 372-3700 • Fax (415) 372-6955

1223\012168

Miller Environmental Company
 999 Anderson Drive, #120
 San Rafael, CA 94901
 Attn: Darin Reinhardt
 Project Manager

Date Sampled: 09-28-92
 Date Received: 09-28-92
 Date Analyzed: 10-08-92

Sample Number

092565

Sample Description

Oakland Auto
 BEI-3 SOIL

ANALYSIS

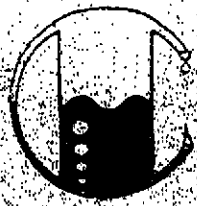
	Detection Limit	Sample Results
	ppm	ppm
Total Petroleum Hydrocarbons as Gasoline	1.0	<1.0
Benzene	0.005	<0.005
Toluene	0.005	<0.005
Xylenes	0.005	<0.005
Ethylbenzene	0.005	<0.005

QA/QC: Sample blank is none detected

Note: Analysis was performed using EPA methods 5030 and TPH
 LUFT with method 8020 used for BTX distinction.
 (ppm) = (mg/kg)

MOBILE CHEM LABS

Ronald G. Evans
 Lab Director



MOBILE CHEM LABS INC.

5021 Blum Road, Suite 3 • Martinez, CA 94553
Phone (415) 372-3700 • Fax (415) 372-6955

1223\012168

Miller Environmental Company
999 Anderson Drive, #120
San Rafael, CA 94901
Attn: Darin Reinholdt
Project Manager

Date Sampled: 09-28-92
Date Received: 09-28-92
Date Analyzed: 10-08-92

Sample Number

092566

Sample Description

Oakland Auto
#11-5 SOIL

ANALYSIS

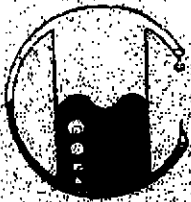
	<u>Detection Limit</u>	<u>Sample Results</u>
	ppm	ppm
Total Petroleum Hydrocarbons as Gasoline	1.0	<1.0
Benzene	0.005	<0.005
Toluene	0.005	<0.005
Xylenes	0.005	<0.005
Ethylbenzene	0.005	<0.005

QA/QC: Sample blank is none detected

Note: Analysis was performed using EPA methods 5030 and TPH LUFT with method 8020 used for BTX distinction.
(ppm) = (mg/kg)

MOBILE CHEM LABS

Ronald G. Evans
Lab Director



MOBILE CHEM LABS INC.

5021 Blum Road, Suite 3 • Martinez, CA 94553
 Phone (415) 372-3700 • Fax (415) 372-6955

1223\012168

Miller Environmental Company
 999 Anderson Drive, #120
 San Rafael, CA 94901
 Attn: Darin Reinhardt
 Project Manager

Date Sampled: 09-28-92
 Date Received: 09-28-92
 Date Analyzed: 10-08-92

Sample Number

092567

Sample Description

Oakland Auto
 5th-6' SOIL

ANALYSIS

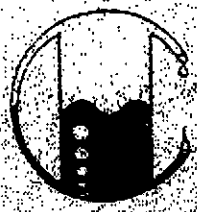
	Detection Limit	Sample Results
	ppm	ppm
Total Petroleum Hydrocarbons as Gasoline	1.0	1.9
Benzene	0.005	0.014
Toluene	0.005	0.017
Xylenes	0.005	0.14
Ethylbenzene	0.005	0.15

QA/QC: Sample blank is none detected

Note: Analysis was performed using EPA methods 5030 and TPH
 LUFT with method 8020 used for BTX distinction.
 (ppm) = (mg/kg)

MOBILE CHEM LABS

Ronald G. Evans
 Lab Director



MOBILE CHEM LABS INC.

5021 Blum Road, Suite 3 • Martinez, CA 94553
Phone (415) 372-3700 • Fax (415) 372-6955

1223\012168

Miller Environmental Company
999 Anderson Drive, #120
San Rafael, CA 94901
Attn: Darin Reinhardt
Project Manager

Date Sampled: 09-28-92
Date Received: 09-28-92
Date Analyzed: 10-08-92

Sample Number

092568

Sample Description

Oakland Auto
BH1-10' SOIL

ANALYSIS

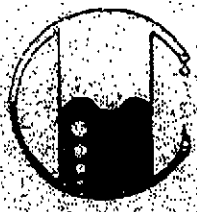
	Detection Limit	Sample Results
	ppm	ppm
Total Petroleum Hydrocarbons as Gasoline	1.0	870
Benzene	0.005	0.43
Toluene	0.005	15
Xylenes	0.005	120
Ethylbenzene	0.005	19

QA/QC: Sample blank is none detected
Duplicate Deviation is 12.6%

Note: Analysis was performed using EPA methods 5030 and TPH LUFT with method 8020 used for BTX distinction.
(ppm) = (mg/kg)

MOBILE CHEM LABS

Ronald C. Evans
Lab Director



MOBILE CHEM LABS INC.

5021 Blum Road Suite 3 • Martinez, CA 94553
Phone (415) 372-3700 • Fax (415) 372-6955

1223\012168

Miller Environmental Company
999 Anderson Drive, #120
San Rafael, CA 94901
Attn: Darin Reinholdt
Project Manager

Date Sampled: 09-28-92
Date Received: 09-28-92
Date Analyzed: 10-08-92

Sample Number

092569

Sample Description

Oakland Auto
SP1 SOIL

ANALYSIS

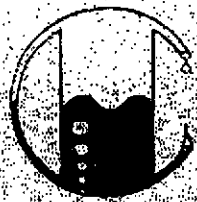
	<u>Detection Limit</u>	<u>Sample Results</u>
	ppm	ppm
Total Petroleum Hydrocarbons as Gasoline	1.0	<1.0
Benzene	0.005	<0.005
Toluene	0.005	<0.005
Xylenes	0.005	<0.005
Ethylbenzene	0.005	<0.005

QA/QC: Sample blank is none detected

Note: Analysis was performed using EPA methods 5030 and TSP
LUFT with method 8020 used for BTK distinction.
(ppm) = (mg/kg)

MOBILE CHEM LABS

Ronald G. Evans
Lab Director



MOBILE CHEM LABS INC.

5021 Blum Road, Suite 3 • Martinez, CA 94553
Phone (415) 372-3700 • Fax (415) 372-6955

1223\012168

Miller Environmental Company
999 Anderson Drive, #120
San Rafael, CA 94901
Attn: Darin Reinholdt
Project Manager

Date Sampled: 09-28-92
Date Received: 09-28-92
Date Analyzed: 10-08-92

Sample Number

092570

Sample Description

Oakland Auto
SP3 SOIL

ANALYSIS

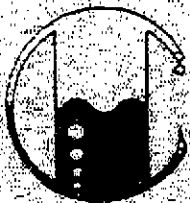
	<u>Detection Limit</u>	<u>Sample Results</u>
	ppm	ppm
Total Petroleum Hydrocarbons as Gasoline	1.0	<1.0
Benzene	0.005	<0.005
Toluene	0.005	<0.005
Xylenes	0.005	<0.005
Ethylbenzene	0.005	<0.005

QA/QC: Sample blank is none detected

Note: Analysis was performed using EPA methods 5030 and TPH LUFT with method 8020 used for BTX distinction.
(ppm) = (mg/kg)

MOBILE CHEM LABS

Ronald G. Evans
Lab Director



MOBILE CHEM LABS INC.

5021 Blum Road, Suite 3 • Martinez, CA 94553
 Phone (415) 372-3700 • Fax (415) 372-6955

1223\012168

Miller Environmental
 999 Anderson Drive, #120
 San Rafael, CA 94901
 Attn: Darin Reinholdt
 Project Manager

Date Sampled: 09-28-92
 Date Received: 09-28-92
 Date Analyzed: 10-12-92

Sample Number	Sample Description	Detection Limit ppm	SOIL Gravimetric Waste Oil as Petroleum Oil ppm
---------------	--------------------	------------------------	--

Oakland Auto

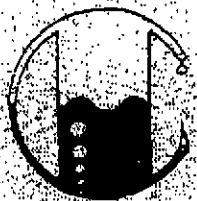
092570	SP3	10	300
--------	-----	----	-----

QA/QC: Freon Blank is none detected.
 Spike Recovery is 105%
 Duplicate Deviation is 9%

Note: Analysis was performed using EPA extraction method 3550
 with Trichlorotrifluoroethane as solvent, and gravimetric
 determination by standard methods 5520
 (ppm) = (mg/kg)

MOBILE CHEM LABS

Ronald G. Evans
 Lab Director



MOBILE CHEM LABS INC.

5021 Blum Road, Suite 3 • Martinez, CA 94553
Phone (415) 372-3700 • Fax (415) 372-6955

1223\012168

Miller Environmental Company
999 Anderson Drive, #120
San Rafael, CA 94901
Attn: Darin Reinholdt
Project Manager

Date Sampled: 09-28-92
Date Received: 09-28-92
Date Analyzed: 10-08-92

Sample Number

092571

Sample Description

Oakland Auto
SP2A SOIL

ANALYSIS

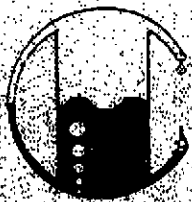
	<u>Detection Limit</u>	<u>Sample Results</u>
	ppm	ppm
Total Petroleum Hydrocarbons as Gasoline	1.0	<1.0
Benzene	0.005	<0.005
Toluene	0.005	<0.005
Xylenes	0.005	<0.005
Ethylbenzene	0.005	<0.005

QA/QC: Sample blank is none detected

Note: Analysis was performed using EPA methods 5030 and TPH LUFT with method 8020 used for BTX distinction.
(ppm) = (mg/kg)

MOBILE CHEM LABS

Ronald G. Evans
Lab Director



MOBILE CHEM LABS INC.

5021 Blum Road, Suite 3 • Martinez, CA 94553
 Phone (415) 372-3700 • Fax (415) 372-6955

1223\012168

Miller Environmental Company
 999 Anderson Drive, #120
 San Rafael, CA 94901
 Attn: Darin Reinhardt
 Project Manager

Date Sampled: 09-28-92
 Date Received: 09-28-92
 Date Analyzed: 10-08-92

Sample Number

092572

Sample Description

Oakland Auto
 SP2E SOIL

ANALYSIS

	Detection Limit	Sample Results
	ppm	ppm
Total Petroleum Hydrocarbons as Gasoline	1.0	<1.0
Benzene	0.005	<0.005
Toluene	0.005	<0.005
Xylenes	0.005	<0.005
Ethylbenzene	0.005	<0.005

QA/QC: Sample blank is none detected
 Spike Recovery is 89%

Note: Analysis was performed using EPA methods 5030 and TPH
 LUFT with method 8020 used for BTX distinction.
 (ppm) = (mg/kg)

MOBILE CHEM LABS

Ronald G. Evans
 Lab Director