

Rec'd 2/14/01

0.3



3164 Gold Camp Drive
Suite 200
Rancho Cordova, CA 95670-6021
U.S.A.
916/638-2085
FAX: 916/638-8385

February 6, 2001

check historical analytical results to see
if some of the wells can be removed
from the semi annual sampling program

Ms. Eva Chu
Alameda County Health Cares Services
Environmental Health Services
1131 Harbor Bay Parkway, Suite 250
Alameda, CA 94502-6577

Subject: *Revised Monitoring and Sampling*
Chevron Station No. 9-1924
4904 Southfront Road
Livermore, California
Delta Project No. DG91-924

Dear Ms. Chu:

Livermore
Delta Environmental Consultants, Inc. (Delta) on behalf of Chevron Products Company (Chevron) request a modification to the current monitoring and sampling program at the subject site located at 4904 Southfront Road, ~~Alameda~~, California (Figure 1). Upon review of historical groundwater monitoring and sampling data for the site, Delta proposes the following changes. Groundwater monitoring wells C-5, C-7 through C-9, C-11 through C-14, C-16 and C-19 through C-21 be monitored and sampled on a semi-annual basis (second and fourth quarters). Groundwater monitoring wells C-17 and C-18 be monitored on an annual basis (second quarter). Groundwater monitoring wells C-1 and C-10 be discontinued from the monitoring and sampling program. Groundwater monitoring wells and site features are illustrated on Figure 2.

Groundwater samples collected would be analyzed for BTEX and MTBE by EPA Method 8021B and TPH as gasoline by EPA Method 8015 Modified during each sampling event as outline previously. During the annual event all groundwater monitoring wells in the program would be analyzed for BTEX and TPH as gasoline by previously mentioned methods and fuel oxygenates (TBA, MTBE, ETBE, DIPE and TAME) by EPA Method 8260B. During each event, depth to water measurements would be collected to be used for generation of a groundwater elevation contour map. No changes would be made to the reporting schedule.

Ms. Eva Chu
Alameda County Health Cares Services
February 6, 2001
Page 2 of 2

The interpretations contained in this document represent our professional opinions and are based, in part, on information supplied by the client. These opinions are based on currently available information and are arrived at in accordance with currently accepted hydrogeologic and engineering practices at this time and location. Other than this, no warranty is implied or intended.

If you have any questions regarding this letter, please contact Will Speth at (916) 536-2612.

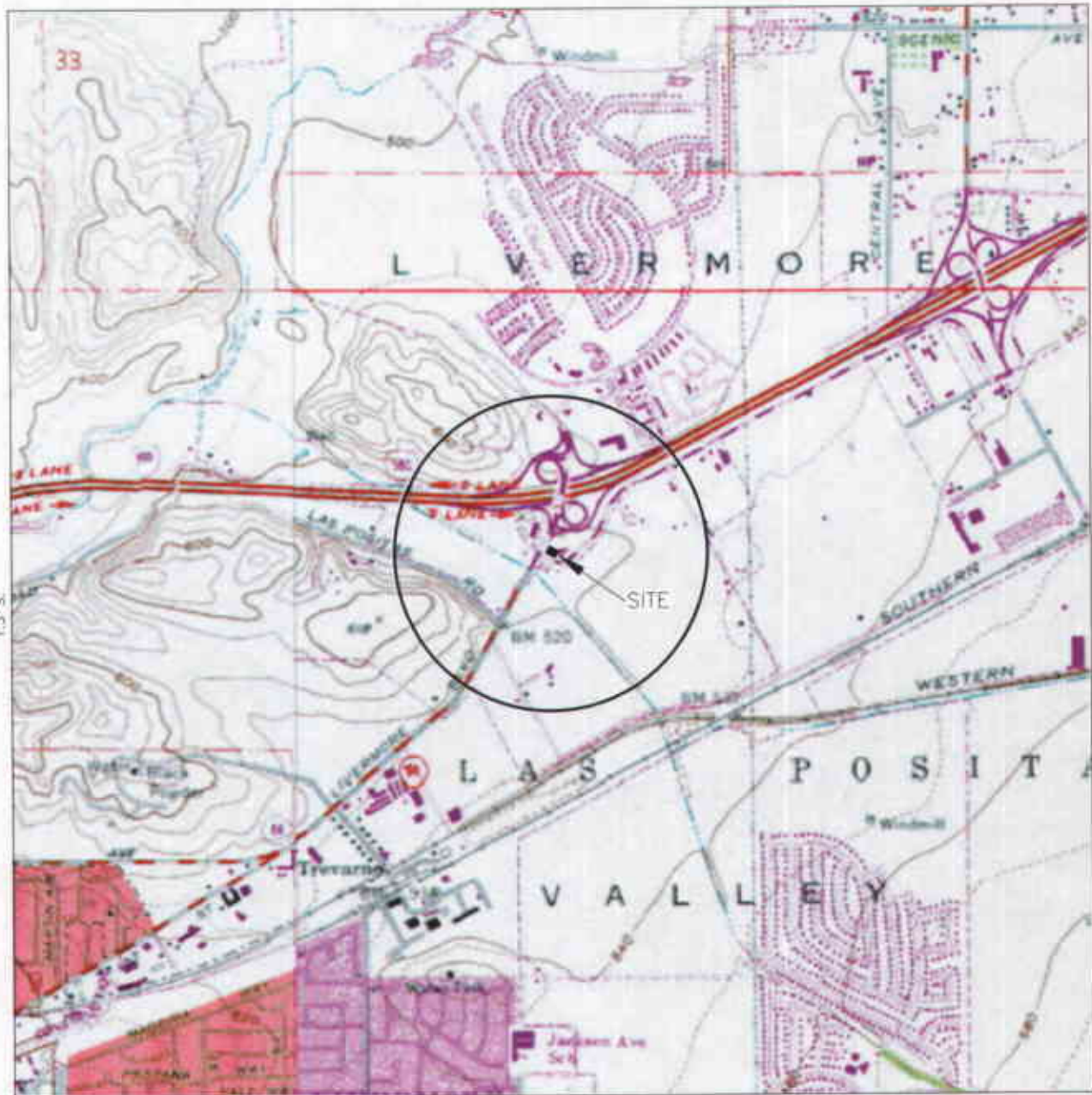
DELTA ENVIRONMENTAL CONSULTANTS, INC.



J. William Speth
Project Manager

JWS (CI001.91924.doc)

cc: Mr. Tom Bauhs – Chevron Products Company
Mr. Jim Brownell – Delta Environmental Consultants, Inc.
Ms. Deanna Harding – Gettler-Ryan Inc.
Mr. Greg Gurss – Gettler-Ryan Inc.



GENERAL NOTES:
 BASE MAP FROM U.S.G.S.
 ALTAMONT, CA.
 7.5 MINUTE TOPOGRAPHIC
 PHOTOREVISED 1980



QUADRANGLE LOCATION



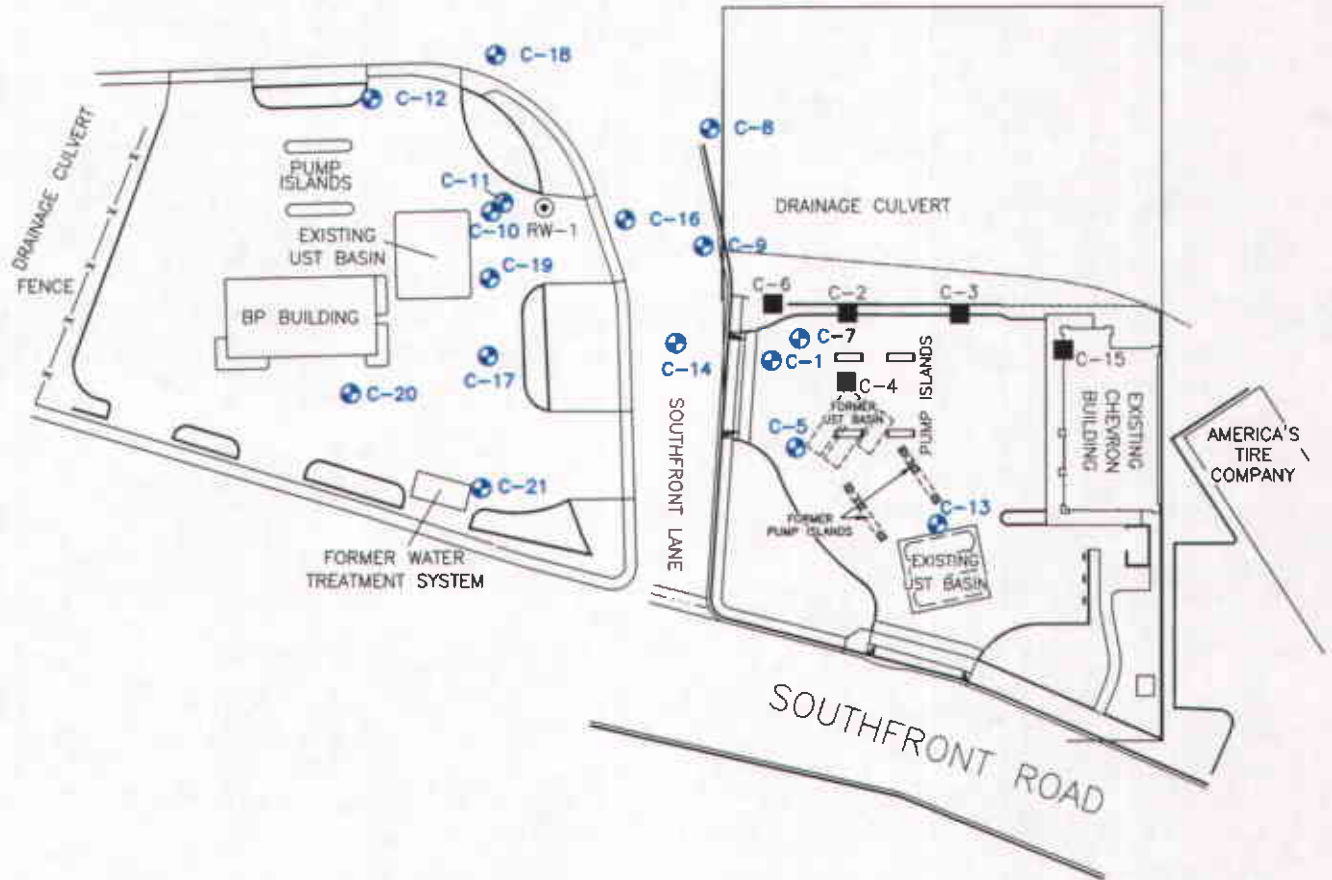
SCALE 1:24,000

FIGURE 1
 SITE TOPOGRAPHIC MAP
 CHEVRON STATION NO. 9-1924
 4904 SOUTHFRONT ROAD
 LIVERMORE, CA.

PROJECT NO. DG91-924	DRAWN BY M.L. B/11/00
FILE NO. DG91924C	PREPARED BY JWS
REVISION NO. 1	REVIEWED BY



FIRST STREET (HIGHWAY 84)



NOTE: SITE MAP ADAPTED FROM GROUNDWATER TECHNOLOGY FIGURES. SITE DIMENSIONS AND FACILITY LOCATIONS NOT VERIFIED.

LEGEND:

- C-1 CHEVRON MONITORING WELL
- C-2 DESTROYED MONITORING WELL LOCATION
- RW-1 RECOVERY WELL LOCATION

FIGURE 2

SITE MAP

CHEVRON STATION NO. 9-1924
4904 SOUTHFRONT ROAD
LIVERMORE, CALIFORNIA

PROJECT NO. D091-924	DRAWN BY TLA 8/11/00
FILE NO. DG 9-1924-A	PREPARED BY JWS
REVISION NO. 1	REVIEWED BY

