

RD 469



Shell Oil Products US

October 22, 2003

Mr. Don Hwang
Alameda County Health Care Services Agency
1131 Harbor Bay Parkway, Suite 250
Alameda, California 94502-6577

Alameda County

OCT 29 2003

Environmental Health

Subject: Shell-branded Service Station
6039 College Avenue
Oakland, California

Dear Mr. Hwang:

Attached for your review and comment is a copy of the *Third Quarter 2003 Monitoring Report* for the above referenced site. Upon information and belief, I declare, under penalty of perjury, that the information contained in the attached document is true and correct.

As always, please feel free to contact me directly at (559) 645-9306 with any questions or concerns.

Sincerely,

Shell Oil Products US

Karen Petryna

Karen Petryna
Sr. Environmental Engineer

October 22, 2003

Mr. Don Hwang
Alameda County Health Care Services Agency
1131 Harbor Bay Parkway, Suite 250
Alameda, California 94502-6577

Re: Third Quarter 2003 Monitoring Report
Shell-branded Service Station
6039 College Avenue
Oakland, California
Incident #98995745
Cambria Project #245-0503-002



Dear Mr. Hwang:

On behalf of Equilon Enterprises LLC dba Shell Oil Products US, Cambria Environmental Technology, Inc. (Cambria) is submitting this groundwater monitoring report in accordance with the reporting requirements of 23 CCR 2652d.

THIRD QUARTER 2003 ACTIVITIES


Groundwater Monitoring: Blaine Tech Services, Inc. (Blaine) of San Jose, California gauged water levels, sampled select wells, calculated groundwater elevations, and compiled the analytical data. Cambria prepared a vicinity map which includes previously submitted well survey information (Figure 1) and a groundwater elevation contour map (Figure 2). Blaine's report, including the laboratory report and supporting field documents, is included as Attachment A.

Separate-Phase and Dissolved-Phase Hydrocarbon Removal: Cambria initiated weekly extraction of separate-phase hydrocarbons (SPH) and dissolved-phase hydrocarbons at this site in September 1999. Between September 22 and November 10, 1999, Advanced Cleanup Technologies, Inc. of Benicia, California extracted SPH and groundwater from wells MW-3 and MW-4 with a vacuum truck. Beginning November 10, 1999, Blaine took over the weekly purging events as the volume of groundwater and SPH removed each week was not sufficient to warrant using a vacuum truck. Due to the absence of SPH in MW-4, weekly purging events by Blaine were discontinued on June 8, 2000. After SPH reappeared in the second and third quarters

**Cambria
Environmental
Technology, Inc.**

5900 Hollis Street
Suite A
Emeryville, CA 94608
Tel (510) 420-0700
Fax (510) 420-9170

of 2001, Cambria reinstated monthly extraction using a vacuum truck in December 2001. No SPH has been detected since the third quarter of 2001. Table 1 includes field data collected from vacuum truck operations and Blaine purging.



Subsurface Investigation: As requested in Alameda County Health Care Services Agency's (ACHCSA's) March 21, 2003 letter, on May 2, 2003, Cambria submitted an amendment to the January 6, 2002 *Subsurface Investigation Work Plan*. The amended work plan includes a total of nine soil borings to further define the extent of the methyl tertiary butyl ether plume southwest of the site and to determine whether off-site utility trenches provide preferential pathways for chemical migration. In an August 19, 2003 letter, ACHCSA requested that Cambria provide additional information in order to evaluate the proposed soil and groundwater borings. As agreed, Cambria will submit the requested information to ACHCSA no later than November 3, 2003.

Additional Groundwater Sample Analysis: As requested in ACHCSA's March 21, 2003 letter, samples collected in the second quarter of 2003 were analyzed additionally for tert-amyl methyl ether, ethyl tert-butyl ether, di-isopropyl ether, tert-butyl alcohol (TBA), ethanol, ethylene dibromide and ethylene dichloride. TBA was detected in all of the samples and was added to the quarterly monitoring scope. Analytical results for TBA are summarized on Table 2.

ANTICIPATED FOURTH QUARTER 2003 ACTIVITIES

Groundwater Extraction (GWE): Monthly mobile GWE using wells MW-3 and MW-4 will continue through the fourth quarter of 2003.

Groundwater Monitoring: Blaine will measure for detected SPH, gauge all wells, sample selected site wells if no SPH are present, and tabulate the data. Cambria will prepare a quarterly monitoring report.

Subsurface Investigation: Upon approval of Cambria's May 2, 2003 *Subsurface Investigation Work Plan Amendment*, Cambria will schedule drilling and obtain the required permits.

CLOSING

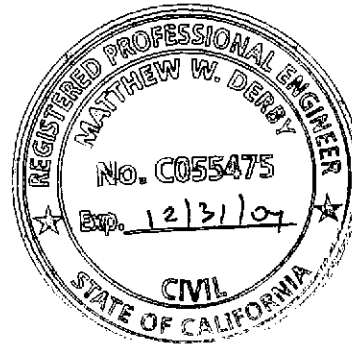
We appreciate the opportunity to work with you on this project. Please call Melody Munz at (510) 420-3324 if you have any questions or comments.

Sincerely,
Cambria Environmental Technology, Inc



Melody Munz
Project Engineer

Matthew W. Derby, P.E.
Senior Project Engineer



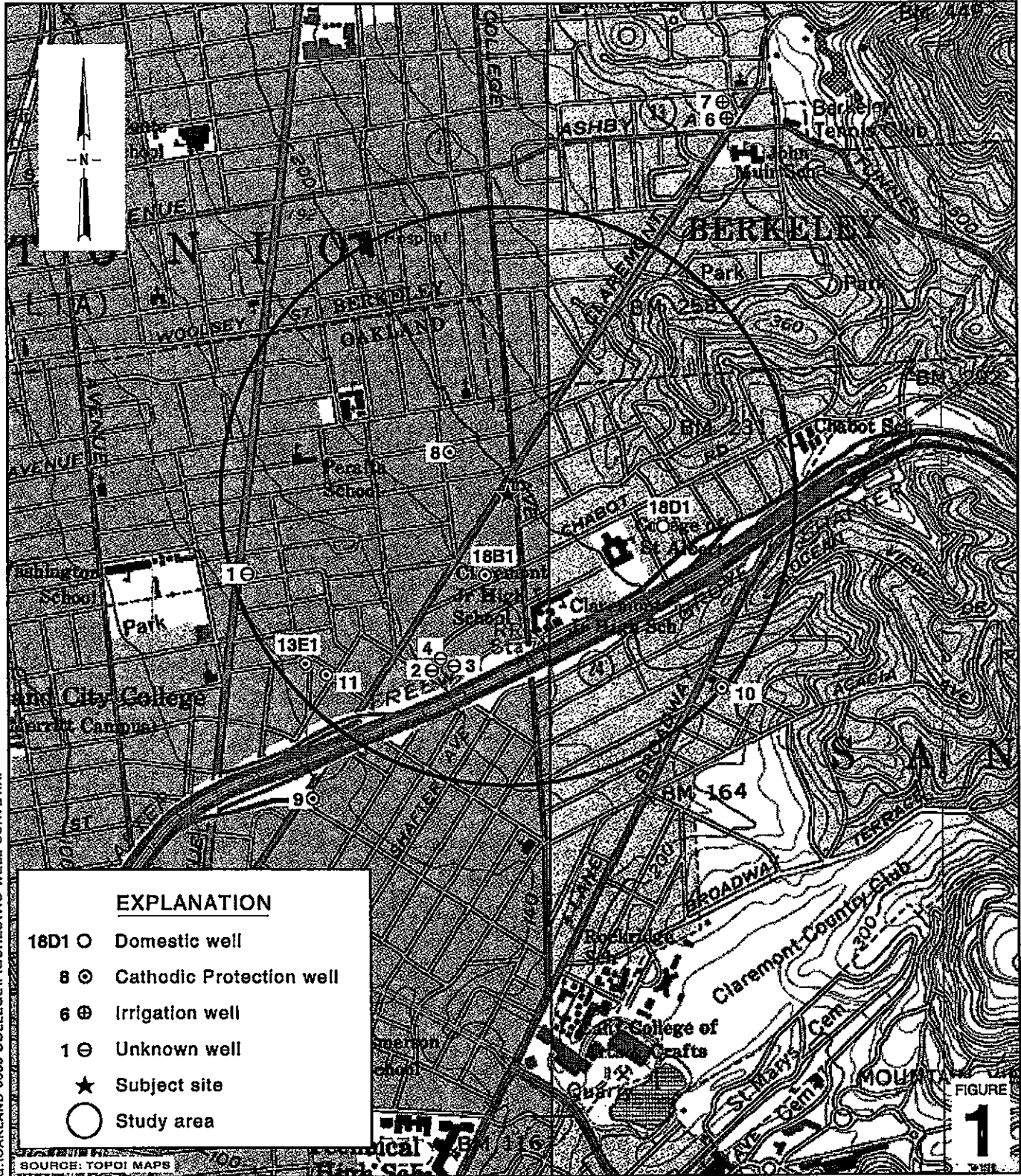
Figures: 1 - Vicinity/Area Well Survey Map
2 - Groundwater Elevation Contour Map

Tables: 1 - Groundwater Extraction – Mass Removal Data
2 - Groundwater Analytical Data - Oxygenates

Attachment: A - Blaine Groundwater Monitoring Report and Field Notes

cc: Karen Petryna, Shell Oil Products US, P.O. Box 7869, Burbank, CA 91510-7869
Russell J. Bruzzone, Inc., 899 Hope Lane, Lafayette, CA 94549
Montrose Investment Co., 242 Rivera Circle, Greenbrae Marina, Larkspur, CA 94939
Attn: Jim Graham

G:\Oakland 6039 College\QM\3q03\3q03qm.doc



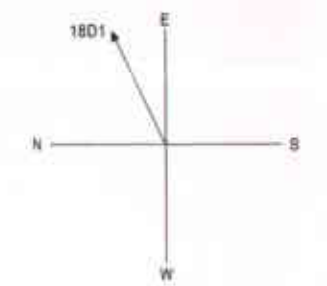
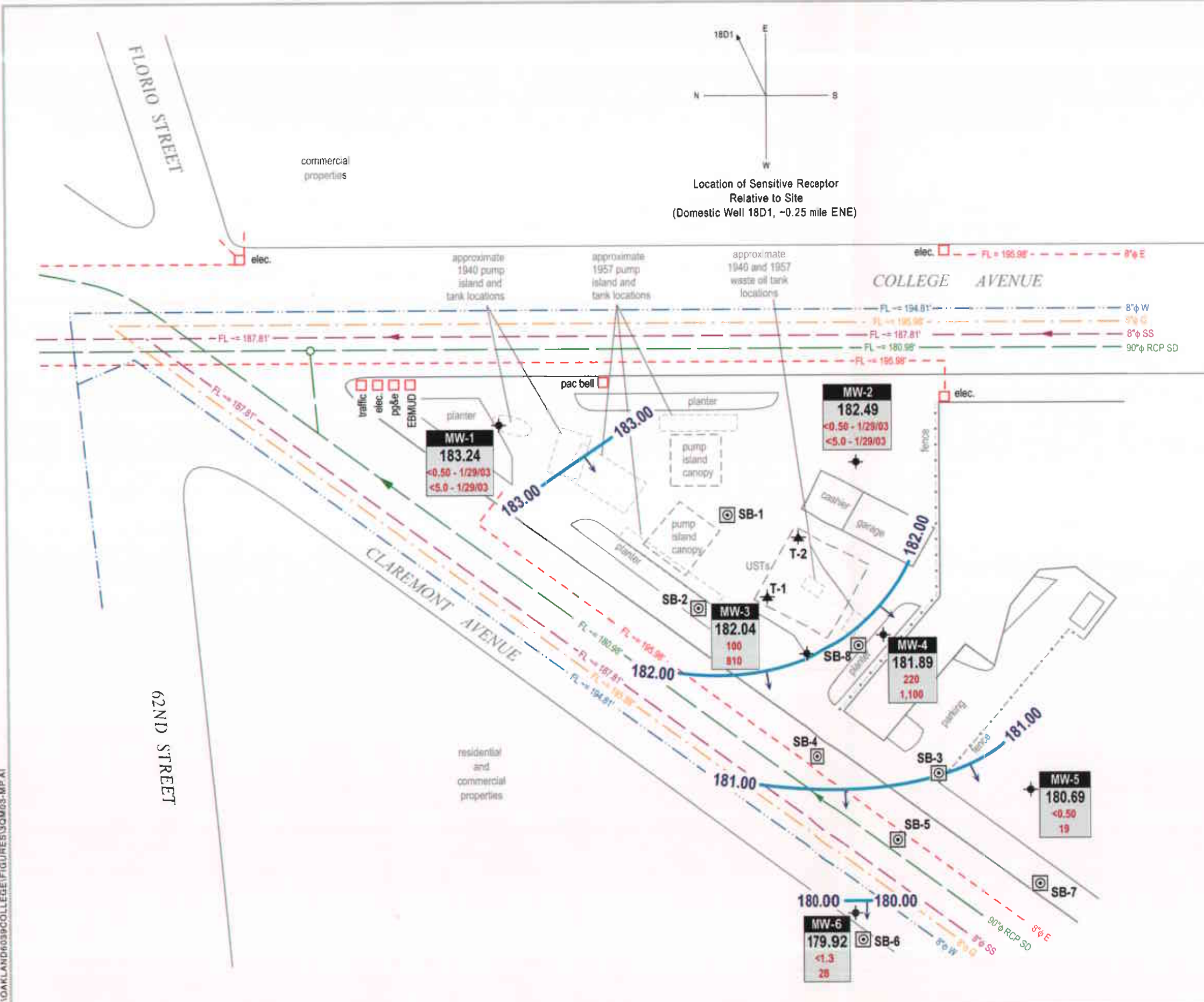
G:\OAKLAND 8039 COLLEGEFIGURES\VIC-WELL-SURVEY.A1

Shell-branded Service Station
 6039 College Avenue
 Oakland, California
 Incident #98995745



**Vicinity / Area Well
 Survey Map**
 1/2 Mile Radius

G:\OAKLAND\039\COLLEGE\FIGURES\30M03-MP.A1



Location of Sensitive Receptor
Relative to Site
(Domestic Well 18D1, ~0.25 mile ENE)

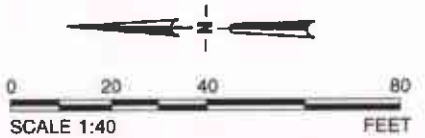
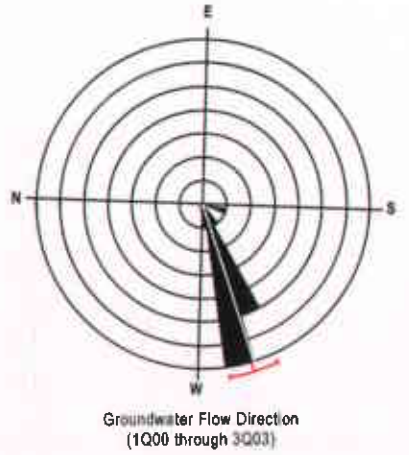
EXPLANATION

- SB-1 Proposed soil boring location
- MW-1 Monitoring well location
- T-1 Tank backfill well
- 8" ϕ SD Storm drain line
- 8" ϕ SS Sanitary sewer line
- 8" ϕ W Water main
- 8" ϕ G Gas line
- 8" ϕ E Electrical line
- Flow direction indicator
- Utility access point
- Groundwater flow direction
- XX.XX Groundwater elevation contour, in feet above mean sea level (msl) approximately located; dashed where inferred

Well	ELEV	Benzene	MTBE
MW-1	183.24	<0.50	1/29/03
MW-2	182.49	<0.50	1/29/03
MW-3	182.04	100	810
MW-4	181.89	220	1,100
MW-5	180.69	<0.50	19
MW-6	179.92	<1.3	25

Well designation
Groundwater elevation, in feet above msl
Benzene and MTBE concentrations are in parts per billion and are analyzed by EPA Method 8260.

FL = Flow line (Estimated flow line elevations based on curb elevations and utility information provided by City of Oakland)



Groundwater Elevation Contour Map

August 27, 2003



C A M B R I A

Shell-branded Service Station
6039 College Avenue
Oakland, California
Incident #98995745

FIGURE
2

Table 1: Groundwater Extraction - Mass Removal Data - Shell-branded Service Station, Incident #98995745, 6039 College Avenue, Oakland, California

Date Purged	Well ID	Volume Pumped (gal)	Cumulative Volume Pumped (gal)	Date Sampled	TPPH			Benzene			MTBE		
					TPPH Concentration (ppb)	TPPH Removed (pounds)	TPPH To Date (pounds)	Benzene Concentration (ppb)	Benzene Removed (pounds)	Benzene To Date (pounds)	MTBE Concentration (ppb)	MTBE Removed (pounds)	MTBE To Date (pounds)
09/22/99	MW-3	115	115	08/31/99	1,550	0.00149	0.00149	232	0.00022	0.00022	4,620	0.00443	0.00443
10/06/99	MW-3	40	155	08/31/99	1,550	0.00052	0.00200	232	0.00008	0.00030	4,620	0.00154	0.00598
10/14/99	MW-3	50	205	08/31/99	1,550	0.00065	0.00265	232	0.00010	0.00040	4,620	0.00193	0.00790
10/18/99	MW-3	30	235	08/31/99	1,550	0.00039	0.00304	232	0.00006	0.00045	4,620	0.00116	0.00906
10/29/99	MW-3	30	265	08/31/99	1,550	0.00039	0.00343	232	0.00006	0.00051	4,620	0.00116	0.01022
11/03/99	MW-3	30	295	08/31/99	1,550	0.00039	0.00382	232	0.00006	0.00057	4,620	0.00116	0.01137
11/10/99	MW-3	30	325	08/31/99	1,550	0.00039	0.00420	232	0.00006	0.00063	4,620	0.00116	0.01253
11/19/99	MW-3	169	494	08/31/99	1,550	0.00219	0.00639	232	0.00033	0.00096	4,620	0.00652	0.01904
11/24/99	MW-3	160	654	08/31/99	1,550	0.00207	0.00846	232	0.00031	0.00127	4,620	0.00617	0.02521
12/02/99	MW-3	200	854	08/31/99	1,550	0.00259	0.01105	232	0.00039	0.00165	4,620	0.00771	0.03292
12/10/99	MW-3	60	914	08/31/99	1,550	0.00078	0.01182	232	0.00012	0.00177	4,620	0.00231	0.03524
12/17/99	MW-3	150	1,064	08/31/99	1,550	0.00194	0.01376	232	0.00029	0.00206	4,620	0.00578	0.04102
01/03/00	MW-3	0	1,064	08/31/99	1,550	0.00000	0.01376	232	0.00000	0.00206	4,620	0.00000	0.04102
01/07/00	MW-3	0	1,064	08/31/99	1,550	0.00000	0.01376	232	0.00000	0.00206	4,620	0.00000	0.04102
01/13/00	MW-3	360	1,424	08/31/99	1,550	0.00466	0.01842	232	0.00070	0.00276	4,620	0.01388	0.05490
01/21/00	MW-3	40	1,464	08/31/99	1,550	0.00052	0.01894	232	0.00008	0.00283	4,620	0.00154	0.05644
01/25/00	MW-3	80	1,544	08/31/99	1,550	0.00103	0.01997	232	0.00015	0.00299	4,620	0.00308	0.05952
02/01/00	MW-3	165	1,709	08/31/99	1,550	0.00213	0.02210	232	0.00032	0.00331	4,620	0.00636	0.06588
02/11/00	MW-3	24	1,733	02/11/00	10,900	0.00218	0.02429	1,030	0.00021	0.00351	19,300	0.00387	0.06975
02/15/00	MW-3	150	1,883	02/11/00	10,900	0.01364	0.03793	1,030	0.00129	0.00480	19,300	0.02416	0.09391
02/23/00	MW-3	100	1,983	02/11/00	10,900	0.00910	0.04703	1,030	0.00086	0.00566	19,300	0.01610	0.11001
03/02/00	MW-3	168	2,151	02/11/00	10,900	0.01528	0.06231	1,030	0.00144	0.00711	19,300	0.02706	0.13707
03/10/00	MW-3	270	2,421	02/11/00	10,900	0.02456	0.08686	1,030	0.00232	0.00943	19,300	0.04348	0.18055
03/15/00	MW-3	96	2,517	02/11/00	10,900	0.00873	0.09559	1,030	0.00083	0.01025	19,300	0.01546	0.19601
03/21/00	MW-3	100	2,617	02/11/00	10,900	0.00910	0.10469	1,030	0.00086	0.01111	19,300	0.01610	0.21211
03/27/00	MW-3	100	2,717	02/11/00	10,900	0.00910	0.11378	1,030	0.00086	0.01197	19,300	0.01610	0.22822
04/07/00	MW-3	160	2,877	02/11/00	10,900	0.01455	0.12834	1,030	0.00138	0.01335	19,300	0.02577	0.25399

Table 1: Groundwater Extraction - Mass Removal Data - Shell-branded Service Station, Incident #98995745, 6039 College Avenue, Oakland, California

Date Purged	Well ID	Volume Pumped (gal)	Cumulative Volume Pumped (gal)	Date Sampled	TPPH			Benzene			MTBE		
					TPPH Concentration (ppb)	TPPH Removed (pounds)	TPPH To Date (pounds)	Benzene Concentration (ppb)	Benzene Removed (pounds)	Benzene To Date (pounds)	MTBE Concentration (ppb)	MTBE Removed (pounds)	MTBE To Date (pounds)
04/13/00	MW-3	120	2,997	02/11/00	10,900	0.01091	0.13925	1,030	0.00103	0.01438	19,300	0.01933	0.27331
04/18/00	MW-3	180	3,177	02/11/00	10,900	0.01637	0.15562	1,030	0.00155	0.01593	19,300	0.02899	0.30230
04/26/00	MW-3	225	3,402	02/11/00	10,900	0.02046	0.17609	1,030	0.00193	0.01786	19,300	0.03624	0.33853
05/04/00	MW-3	160	3,562	02/11/00	10,900	0.01455	0.19064	1,030	0.00138	0.01923	19,300	0.02577	0.36430
05/09/00	MW-3	180	3,742	02/11/00	10,900	0.01637	0.20701	1,030	0.00155	0.02078	19,300	0.02899	0.39329
05/17/00	MW-3	138	3,880	02/11/00	10,900	0.01255	0.21956	1,030	0.00119	0.02197	19,300	0.02222	0.41551
05/22/00	MW-3	200	4,080	02/11/00	10,900	0.01819	0.23775	1,030	0.00172	0.02369	19,300	0.03221	0.44772
06/01/00	MW-3	120	4,200	02/11/00	10,900	0.01091	0.24867	1,030	0.00103	0.02472	19,300	0.01933	0.46705
06/08/00	MW-3	170	4,370	02/11/00	10,900	0.01546	0.26413	1,030	0.00146	0.02618	19,300	0.02738	0.49443
11/05/01	MW-3	100	4,470	07/30/01	2,700	0.00225	0.26638	250	0.00021	0.02639	5,200	0.00434	0.49877
12/05/01	MW-3	500	4,970	07/30/01	2,700	0.01126	0.27765	250	0.00104	0.02743	5,200	0.02170	0.52046
01/25/02	MW-3	500	5,470	12/12/01	<10,000	0.02086	0.29851	720	0.00300	0.03043	6,600	0.02754	0.54800
02/13/02	MW-3	411	5,881	01/31/02	11,000	0.03772	0.33623	750	0.00257	0.03301	5,800	0.01989	0.56789
03/13/02	MW-3	783	6,664	01/31/02	11,000	0.07187	0.40810	750	0.00490	0.03791	5,800	0.03790	0.60578
04/17/02	MW-3	300	6,964	01/31/02	11,000	0.02754	0.43564	750	0.00188	0.03978	5,800	0.01452	0.62030
05/15/02	MW-3	215	7,179	01/31/02	11,000	0.01973	0.45538	750	0.00135	0.04113	5,800	0.01041	0.63071
06/14/02	MW-3	385	7,564	05/31/02	5,100	0.01638	0.47176	410	0.00132	0.04245	3,600	0.01157	0.64227
07/12/02	MW-3	300	7,864	05/31/02	5,100	0.01277	0.48453	410	0.00103	0.04347	3,600	0.00901	0.65129
08/16/02	MW-3	100	7,964	07/25/02	2,100	0.00175	0.48628	170	0.00014	0.04362	2,600	0.00217	0.65346
09/18/02	MW-3	229	8,193	07/25/02	2,100	0.00401	0.49029	170	0.00032	0.04394	2,600	0.00497	0.65842
10/29/02	MW-3	151	8,344	07/25/02	2,100	0.00265	0.49294	170	0.00021	0.04415	2,600	0.00328	0.66170
11/18/02	MW-3	81	8,425	07/25/02	2,100	0.00142	0.49436	170	0.00011	0.04427	2,600	0.00176	0.66346
12/21/02	MW-3	459	8,884	11/26/02	510	0.00195	0.49631	26	0.00010	0.04437	940	0.00360	0.66706
01/15/03	MW-3	619	9,503	11/26/02	510	0.00263	0.49894	26	0.00013	0.04450	940	0.00486	0.67191
02/18/03	MW-3	470	9,973	01/29/03	6,000	0.02353	0.52248	460	0.00180	0.04631	3,500	0.01373	0.68564
04/29/03	MW-3	350	10,323	01/29/03	6,000	0.01752	0.54000	460	0.00134	0.04765	3,500	0.01022	0.69586
05/27/03	MW-3	300	10,623	01/29/03	6,000	0.01502	0.55502	460	0.00115	0.04880	3,500	0.00876	0.70462

Table 1: Groundwater Extraction - Mass Removal Data - Shell-branded Service Station, Incident #98995745, 6039 College Avenue, Oakland, California

Date Purged	Well ID	Volume Pumped (gal)	Cumulative Volume Pumped (gal)	Date Sampled	TPPH			Benzene			MTBE		
					TPPH Concentration (ppb)	TPPH Removed (pounds)	TPPH To Date (pounds)	Benzene Concentration (ppb)	Benzene Removed (pounds)	Benzene To Date (pounds)	MTBE Concentration (ppb)	MTBE Removed (pounds)	MTBE To Date (pounds)
06/30/03	MW-3	450	11,073	06/03/03	5,300	0.01990	0.57492	350	0.00131	0.05012	2,200	0.00826	0.71288
08/02/03	MW-3	200	11,273	06/03/03	5,300	0.00885	0.58376	350	0.00058	0.05070	2,200	0.00367	0.71655
09/08/03	MW-3	200	11,473	06/03/03	5,300	0.00885	0.59261	350	0.00058	0.05128	2,200	0.00367	0.72023
09/22/99	MW-4	100	100	11/03/97	32,000	0.02670	0.02670	1,100	0.00092	0.00092	78,000	0.06509	0.06509
10/06/99	MW-4	60	160	11/03/97	32,000	0.01602	0.04272	1,100	0.00055	0.00147	78,000	0.03905	0.10414
10/14/99	MW-4	30	190	11/03/97	32,000	0.00801	0.05073	1,100	0.00028	0.00174	78,000	0.01953	0.12366
10/18/99	MW-4	30	220	11/03/97	32,000	0.00801	0.05874	1,100	0.00028	0.00202	78,000	0.01953	0.14319
10/29/99	MW-4	30	250	11/03/97	32,000	0.00801	0.06675	1,100	0.00028	0.00229	78,000	0.01953	0.16271
11/03/99	MW-4	30	280	11/03/97	32,000	0.00801	0.07477	1,100	0.00028	0.00257	78,000	0.01953	0.18224
11/10/99	MW-4	30	310	11/03/97	32,000	0.00801	0.08278	1,100	0.00028	0.00285	78,000	0.01953	0.20177
11/19/99	MW-4	0	310	11/03/97	32,000	0.00000	0.08278	1,100	0.00000	0.00285	78,000	0.00000	0.20177
11/24/99	MW-4	0	310	11/03/97	32,000	0.00000	0.08278	1,100	0.00000	0.00285	78,000	0.00000	0.20177
12/02/99	MW-4	0	310	11/03/97	32,000	0.00000	0.08278	1,100	0.00000	0.00285	78,000	0.00000	0.20177
12/10/99	MW-4	0	310	11/03/97	32,000	0.00000	0.08278	1,100	0.00000	0.00285	78,000	0.00000	0.20177
12/17/99	MW-4	0	310	11/03/97	32,000	0.00000	0.08278	1,100	0.00000	0.00285	78,000	0.00000	0.20177
01/03/00	MW-4	0	310	11/03/97	32,000	0.00000	0.08278	1,100	0.00000	0.00285	78,000	0.00000	0.20177
01/07/00	MW-4	0	310	11/03/97	32,000	0.00000	0.08278	1,100	0.00000	0.00285	78,000	0.00000	0.20177
01/13/00	MW-4	350	660	11/03/97	32,000	0.09346	0.17623	1,100	0.00321	0.00606	78,000	0.22780	0.42957
01/21/00	MW-4	40	700	11/03/97	32,000	0.01068	0.18691	1,100	0.00037	0.00643	78,000	0.02603	0.45560
01/25/00	MW-4	100	800	11/03/97	32,000	0.02670	0.21362	1,100	0.00092	0.00734	78,000	0.06509	0.52069
02/01/00	MW-4	165	965	11/03/97	32,000	0.04406	0.25767	1,100	0.00151	0.00886	78,000	0.10739	0.62808
02/11/00	MW-4	19	984	02/11/00	47,200	0.00748	0.26516	905	0.00014	0.00900	27,400	0.00434	0.63242
02/15/00	MW-4	100	1,084	02/11/00	47,200	0.03939	0.30454	905	0.00076	0.00976	27,400	0.02286	0.65529
02/23/00	MW-4	100	1,184	02/11/00	47,200	0.03939	0.34393	905	0.00076	0.01051	27,400	0.02286	0.67815
03/02/00	MW-4	270	1,454	02/11/00	47,200	0.10634	0.45027	905	0.00204	0.01255	27,400	0.06173	0.73988
03/10/00	MW-4	220	1,674	02/11/00	47,200	0.08665	0.53692	905	0.00166	0.01421	27,400	0.05030	0.79018

Table 1: Groundwater Extraction - Mass Removal Data - Shell-branded Service Station, Incident #98995745, 6039 College Avenue, Oakland, California

Date Purged	Well ID	Volume Pumped (gal)	Cumulative Volume Pumped (gal)	Date Sampled	TPPH			Benzene			MTBE		
					TPPH Concentration (ppb)	TPPH Removed (pounds)	TPPH To Date (pounds)	Benzene Concentration (ppb)	Benzene Removed (pounds)	Benzene To Date (pounds)	MTBE Concentration (ppb)	MTBE Removed (pounds)	MTBE To Date (pounds)
03/15/00	MW-4	96	1,770	02/11/00	47,200	0.03781	0.57473	905	0.00072	0.01494	27,400	0.02195	0.81213
03/21/00	MW-4	100	1,870	02/11/00	47,200	0.03939	0.61411	905	0.00076	0.01569	27,400	0.02286	0.83499
03/27/00	MW-4	100	1,970	02/11/00	47,200	0.03939	0.65350	905	0.00076	0.01645	27,400	0.02286	0.85786
04/07/00	MW-4	113	2,083	02/11/00	47,200	0.04451	0.69800	905	0.00085	0.01730	27,400	0.02584	0.88369
04/13/00	MW-4	110	2,193	02/11/00	47,200	0.04332	0.74133	905	0.00083	0.01813	27,400	0.02515	0.90884
04/18/00	MW-4	225	2,418	02/11/00	47,200	0.08862	0.82994	905	0.00170	0.01983	27,400	0.05144	0.96029
04/26/00	MW-4	315	2,733	02/11/00	47,200	0.12406	0.95401	905	0.00238	0.02221	27,400	0.07202	1.03231
05/04/00	MW-4	150	2,883	02/11/00	47,200	0.05908	1.01308	905	0.00113	0.02334	27,400	0.03430	1.06660
05/09/00	MW-4	315	3,198	02/11/00	47,200	0.12406	1.13715	905	0.00238	0.02572	27,400	0.07202	1.13862
05/17/00	MW-4	270	3,468	02/11/00	47,200	0.10634	1.24349	905	0.00204	0.02776	27,400	0.06173	1.20035
05/22/00	MW-4	200	3,668	02/11/00	47,200	0.07877	1.32226	905	0.00151	0.02927	27,400	0.04573	1.24608
06/05/00	MW-4	125	3,793	02/11/00	47,200	0.04923	1.37149	905	0.00094	0.03021	27,400	0.02858	1.27466
06/08/00	MW-4	170	3,963	02/11/00	47,200	0.06696	1.43845	905	0.00128	0.03150	27,400	0.03887	1.31353
11/05/01	MW-4*	0	3,963	07/30/01	6,700	0.00000	1.43845	260	0.00000	0.03150	3,900	0.00000	1.31353
12/05/01	MW-4	850	4,813	07/30/01	6,700	0.04752	1.48597	260	0.00184	0.03334	3,900	0.02766	1.34119
01/25/02	MW-4	578	5,391	12/12/01	15,000	0.07235	1.55831	1,300	0.00627	0.03961	20,000	0.09646	1.43765
02/13/02	MW-4	500	5,891	01/31/02	12,000	0.05007	1.60838	1,500	0.00626	0.04587	12,000	0.05007	1.48772
03/13/02	MW-4	300	6,191	01/31/02	12,000	0.03004	1.63842	1,500	0.00375	0.04962	12,000	0.03004	1.51776
04/17/02	MW-4	309	6,500	01/31/02	12,000	0.03094	1.66936	1,500	0.00387	0.05349	12,000	0.03094	1.54870
05/15/02	MW-4	291	6,791	01/31/02	12,000	0.02914	1.69850	1,500	0.00364	0.05713	12,000	0.02914	1.57784
06/14/02	MW-4	200	6,991	05/31/02	8,200	0.01368	1.71218	1,100	0.00184	0.05897	8,100	0.01352	1.59135
07/12/02	MW-4	263	7,254	05/31/02	8,200	0.01800	1.73018	1,100	0.00241	0.06138	8,100	0.01778	1.60913
08/16/02	MW-4	322	7,576	07/25/02	3,300	0.00887	1.73905	290	0.00078	0.06216	2,600	0.00699	1.61612
09/18/02	MW-4	150	7,726	07/25/02	3,300	0.00413	1.74318	290	0.00036	0.06253	2,600	0.00325	1.61937
10/29/02	MW-4	100	7,826	07/25/02	3,300	0.00275	1.74593	290	0.00024	0.06277	2,600	0.00217	1.62154
11/18/02	MW-4	200	8,026	07/25/02	3,300	0.00551	1.75144	290	0.00048	0.06325	2,600	0.00434	1.62588
12/21/02	MW-4	400	8,426	11/26/02	1,400	0.00467	1.75611	89	0.00030	0.06355	770	0.00257	1.62845

Table 1: Groundwater Extraction - Mass Removal Data - Shell-branded Service Station, Incident #98995745, 6039 College Avenue, Oakland, California

Date Purged	Well ID	Volume Pumped (gal)	Cumulative Volume Pumped (gal)	Date Sampled	TPPH			Benzene			MTBE		
					TPPH Concentration (ppb)	TPPH Removed (pounds)	TPPH To Date (pounds)	Benzene Concentration (ppb)	Benzene Removed (pounds)	Benzene To Date (pounds)	MTBE Concentration (ppb)	MTBE Removed (pounds)	MTBE To Date (pounds)
01/15/03	MW-4	400	8,826	11/26/02	1,400	0.00467	1.76078	89	0.00030	0.06385	770	0.00257	1.63102
02/18/03	MW-4	600	9,426	01/29/03	7,400	0.03705	1.79783	1,400	0.00701	0.07086	8,900	0.04456	1.67558
04/29/03	MW-4	384	9,810	01/29/03	7,400	0.02371	1.82154	1,400	0.00449	0.07534	8,900	0.02852	1.70410
05/27/03	MW-4	196	10,006	01/29/03	7,400	0.01210	1.83365	1,400	0.00229	0.07763	8,900	0.01456	1.71865
06/30/03	MW-4	207	10,213	06/03/03	5,600	0.00967	1.84332	990	0.00171	0.07934	3,700	0.00639	1.72504
08/02/03	MW-4	193	10,406	06/03/03	5,600	0.00902	1.85234	990	0.00159	0.08094	3,700	0.00596	1.73100
09/08/03	MW-4	193	10,599	06/03/03	5,600	0.00902	1.86136	990	0.00159	0.08253	3,700	0.00596	1.73696
Total Gallons Extracted:		22,072			Total Pounds Removed:		2.45397	Total Pounds Removed:		0.13381	Total Pounds Removed:		2.45719
					Total Gallons Removed:		0.40229			0.01833			0.39632

Abbreviations & Notes:

TPPH = Total purgeable hydrocarbons as gasoline

MtBE = Methyl tert-butyl ether

ppb = Parts per billion

gal = Gallon

Mass removed based on the formula: volume extracted (gal) x Concentration (µg/L) x (g/10⁶µg) x (pound/453.6g) x (3.785 L/gal)

Volume removal data based on the formula: density (in gms/cc) x 9.339 (ccxlbs/gmsxgals)

TPPH, benzene analyzed by EPA Method 8015/8020

MTBE analyzed by EPA Method 8260 in bold font, all other MTBE analyzed by EPA Method 8020

Concentrations based on most recent groundwater monitoring results

Groundwater extracted by vacuum trucks provided by ACTI between September 22, 1999 and November 10, 1999, and from November 5, 2001 through December 5, 2001, and by Blaine Tech Services from November 19, 1999 to June 8, 2000.

Groundwater extracted by vacuum trucks provided by Onyx Industrial from January 25, 2002 and on. Water disposed of at a Martinez refinery.

* = Well dry.

Table 2. Groundwater Analytical Data - Oxygenates - Shell-branded Service Station, Incident #98995745, 6039 College Avenue, Oakland, California

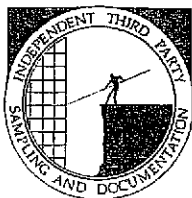
Sample ID	Date Sampled	MTBE	DIPE	ETBE	TAME	TBA	1,2 DCA	EDB	Ethanol
		(Concentrations in ppb)							
MW-3	12/12/01	6,600	<100	<100	<100	<1,000	---	---	<1,000
	06/03/03	2,200	<100	<100	<100	920	<25	<25	<2,500
	08/27/03	810	---	---	---	460	---	---	---
MW-4	06/03/03	3,700	<40	<40	<40	760	<10	<10	<1,000
	08/27/03	1,100	---	---	---	380	---	---	---
MW-5	06/03/03	120	<10	<10	<10	2,200	<2.5	<2.5	<250
	08/27/03	19	---	---	---	180	---	---	---
MW-6	12/12/01	2,100	<5.0	<5.0	<5.0	97	---	---	<500
	06/03/03	69	<2.0	<2.0	<2.0	970	<0.50	<0.50	<50
	08/27/03	28	---	---	---	880	---	---	---

Abbreviations:

MTBE = Methyl tert-butyl ether, analyzed by EPA Method 8260
 DIPE = Di-isopropyl ether, analyzed by EPA Method 8260
 ETBE = Ethyl tert-butyl ether, analyzed by EPA Method 8260
 TAME = Tert-amyl methyl ether, analyzed by EPA Method 8260
 TBA = Tert-butyl alcohol, analyzed by EPA Method 8260
 1,2-DCA = 1,2-dichloroethane, analyzed by EPA Method 8260
 EDB = Ethylene dibromide, analyzed by EPA Method 8260
 Ethanol analyzed by EPA Method 8260
 ppb = Parts per billion
 --- = Not analyzed

ATTACHMENT A
Blaine Groundwater Monitoring Report
and Field Notes

BLAINE
TECH SERVICES, INC.



1680 ROGERS AVENUE
SAN JOSE, CA 95112-1105
(408) 573-7771 FAX
(408) 573-0555 PHONE
CONTRACTOR'S LICENSE #746684
www.blainetech.com

September 24, 2003

Karen Petryna
Shell Oil Products US
P.O. Box 7869
Burbank, CA 91510-7869

Third Quarter 2003 Groundwater Monitoring at
Shell-branded Service Station
6039 College Avenue
Oakland, CA

Monitoring performed on August 27, 2003

Groundwater Monitoring Report **030827-MD-1**

This report covers the routine monitoring of groundwater wells at this Shell-branded facility. In accordance with standard procedures that conform to Regional Water Quality Control Board requirements, routine field data collection includes depth to water, total well depth, thickness of any separate immiscible layer, water column volume, calculated purge volume (if applicable), elapsed evacuation time (if applicable), total volume of water removed (if applicable), and standard water parameter instrument readings. Sample material is collected, contained, stored, and transported to the laboratory in conformance with EPA standards. Purgewater (if applicable) is, likewise, collected and transported to the Martinez Refining Company.

Basic field information is presented alongside analytical values excerpted from the laboratory report in the cumulative table of **WELL CONCENTRATIONS**. The full analytical report for the most recent samples and the field data sheets are attached to this report.

At a minimum, Blaine Tech Services, Inc. field personnel are certified on completion of a forty-hour Hazardous Materials and Emergency Response training course per 29 CFR 1910.120. Field personnel are also enrolled in annual eight-hour refresher courses.

Blaine Tech Services, Inc. conducts sampling and documentation assignments of this type as an independent third party. Our activities at this site consisted of objective data and sample collection only. No interpretation of analytical results, defining of hydrological conditions or formulation of recommendations was performed.

Please call if you have any questions.

Yours truly,

Leon Gearhart
Project Coordinator

LG/jt

attachments: Cumulative Table of WELL CONCENTRATIONS
Certified Analytical Report
Field Data Sheets

cc: Anni Kreml
Cambria Environmental Technology, Inc.
5900 Hollis Street, Suite A
Oakland, CA 94608

WELL CONCENTRATIONS
Shell-branded Service Station
6039 College Avenue
Oakland, CA

Well ID	Date	TPPH (ug/L)	TEPH (ug/L)	B (ug/L)	T (ug/L)	E (ug/L)	X (ug/L)	MTBE 8020 (ug/L)	MTBE 8260 (ug/L)	TOC (MSL)	Depth to Water (ft.)	Depth to SPH (ft.)	GW Elevation (MSL)	SPH Thickness (ft.)	DO (ppm)
MW-1	02/15/1990	95	650	ND	0.67	0.37	3.2	NA	NA	195.89	17.73	NA	178.16	NA	NA
MW-1	04/19/1990	NA	NA	NA	NA	NA	NA	NA	NA	195.89	18.51	NA	177.38	NA	NA
MW-1	05/14/1990	95	ND	0.7	0.57	0.71	3.5	NA	NA	195.89	18.92	NA	176.97	NA	NA
MW-1	06/21/1990	NA	NA	NA	NA	NA	NA	NA	NA	195.89	18.21	NA	177.68	NA	NA
MW-1	09/12/1990	ND	84	ND	ND	ND	ND	NA	NA	195.89	19.81	NA	176.08	NA	NA
MW-1	11/27/1990	NA	NA	NA	NA	NA	NA	NA	NA	195.89	20.39	NA	175.50	NA	NA
MW-1	03/08/1991	ND	50	ND	ND	ND	ND	NA	NA	195.89	16.85	NA	179.04	NA	NA
MW-1	06/03/1991	ND	ND	ND	ND	ND	ND	NA	NA	195.89	17.82	NA	178.07	NA	NA
MW-1	08/30/1991	16.85	520	ND	ND	ND	ND	NA	NA	195.89	19.87	NA	176.02	NA	NA
MW-1	11/22/1991	<50	<50	<0.5	<0.5	<0.5	<0.5	NA	NA	195.89	20.58	NA	175.31	NA	NA
MW-1	03/18/1992	<30	<50	<0.3	<0.3	<0.3	<0.3	NA	NA	195.89	13.55	NA	182.34	NA	NA
MW-1	05/28/1992	<50	<50	<0.5	<0.5	<0.5	<0.5	NA	NA	195.89	17.08	NA	178.81	NA	NA
MW-1	08/19/1992	<50	<50	<0.5	<0.5	<0.5	<0.5	NA	NA	195.89	19.07	NA	176.82	NA	NA
MW-1	11/17/1992	<50	<50	<0.5	<0.5	<0.5	<0.5	NA	NA	195.89	20.11	NA	175.78	NA	NA
MW-1	02/12/1993	<50	<50	<0.5	<0.5	<0.5	<0.5	NA	NA	195.89	12.10	NA	183.79	NA	NA
MW-1	06/10/1993	<50	NA	<0.5	<0.5	<0.5	<0.5	NA	NA	195.89	14.87	NA	181.02	NA	NA
MW-1	08/18/1993	<50	NA	<0.5	<0.5	<0.5	<0.5	NA	NA	195.89	16.90	NA	178.99	NA	NA
MW-1	11/19/1993	<50	NA	<0.5	<0.5	<0.5	<0.5	NA	NA	195.89	19.72	NA	176.17	NA	NA
MW-1	02/28/1994	<50	NA	<0.5	<0.5	<0.5	1.7	NA	NA	195.89	15.08	NA	180.81	NA	NA
MW-1	05/04/1994	<50	NA	<0.5	<0.5	<0.5	<0.5	NA	NA	195.89	17.20	NA	178.69	NA	NA
MW-1	08/10/1994	<50	NA	<0.5	<0.5	<0.5	<0.5	NA	NA	195.89	18.76	NA	177.13	NA	NA
MW-1	11/08/1994	<50	NA	<0.5	<0.5	<0.5	<0.5	NA	NA	195.89	16.00	NA	179.89	NA	NA
MW-1	02/01/1995	<50	NA	<0.5	<0.5	<0.5	<0.5	NA	NA	195.89	10.18	NA	185.71	NA	NA
MW-1	05/10/1995	<50	NA	<0.5	<0.5	<0.5	<0.5	NA	NA	195.89	11.88	NA	184.01	NA	NA
MW-1	08/24/1995	<50	NA	<0.5	<0.5	<0.5	<0.5	NA	NA	195.89	15.60	NA	180.29	NA	NA
MW-1	11/10/1995	<50	NA	<0.5	<0.5	<0.5	<0.5	NA	NA	195.89	18.24	NA	177.65	NA	NA
MW-1	02/24/1996	<50	NA	<0.5	<0.5	<0.5	<0.5	NA	NA	195.89	9.88	NA	186.01	NA	NA

WELL CONCENTRATIONS
Shell-branded Service Station
6039 College Avenue
Oakland, CA

Well ID	Date	TPPH (ug/L)	TEPH (ug/L)	B (ug/L)	T (ug/L)	E (ug/L)	X (ug/L)	MTBE 8020 (ug/L)	MTBE 8260 (ug/L)	TOC (MSL)	Depth to Water (ft)	Depth to SPH (ft)	GW Elevation (MSL)	SPH Thickness (ft)	DO (ppm)
MW-1	05/22/1996	<50	NA	<0.5	<0.5	<0.5	<0.5	<2.5	NA	195.89	12.24	NA	183.65	NA	NA
MW-1	08/19/1996	<50	NA	<0.5	<0.5	<0.5	<0.5	<2.5	NA	195.89	15.86	NA	180.03	NA	NA
MW-1	12/05/1996	160	NA	7.3	8.2	5.5	23	<2.5	NA	195.89	16.21	NA	179.68	NA	NA
MW-1	01/08/1997	<50	NA	<0.50	<0.50	<0.50	<0.50	<2.5	NA	195.89	9.73	NA	186.16	NA	NA
MW-1	02/20/1997	<50	NA	<0.50	<0.50	<0.50	<0.50	<2.5	NA	195.89	11.60	NA	184.29	NA	NA
MW-1	05/30/1997	NA	NA	NA	NA	NA	NA	NA	NA	195.89	15.02	NA	180.87	NA	NA
MW-1	08/18/1997	NA	NA	NA	NA	NA	NA	NA	NA	195.89	17.20	NA	178.69	NA	NA
MW-1	11/03/1997	NA	NA	NA	NA	NA	NA	NA	NA	195.89	16.02	NA	179.87	NA	NA
MW-1	01/20/1998	NA	NA	NA	NA	NA	NA	NA	NA	195.89	9.35	NA	186.54	NA	NA
MW-1	06/05/1998	NA	NA	NA	NA	NA	NA	NA	NA	195.89	11.75	NA	184.14	NA	NA
MW-1	07/23/1998	NA	NA	NA	NA	NA	NA	NA	NA	195.89	13.32	NA	182.57	NA	NA
MW-1	11/19/1998	NA	NA	NA	NA	NA	NA	NA	NA	195.89	14.01	NA	181.88	NA	NA
MW-1	02/03/1999	NA	NA	NA	NA	NA	NA	NA	NA	195.89	15.62	NA	180.27	NA	NA
MW-1	06/04/1999	NA	NA	NA	NA	NA	NA	NA	NA	195.89	14.72	NA	181.17	NA	NA
MW-1	08/31/1999	NA	NA	NA	NA	NA	NA	NA	NA	195.89	17.00	NA	178.89	NA	NA
MW-1	12/10/1999	NA	NA	NA	NA	NA	NA	NA	NA	195.89	18.36	NA	177.53	NA	NA
MW-1	02/11/2000	NA	NA	NA	NA	NA	NA	NA	NA	195.89	15.09	NA	180.80	NA	NA
MW-1	05/04/2000	NA	NA	NA	NA	NA	NA	NA	NA	195.89	12.97	NA	182.92	NA	NA
MW-1	08/31/2000	NA	NA	NA	NA	NA	NA	NA	NA	195.89	15.02	NA	180.87	NA	NA
MW-1	11/30/2000	NA	NA	NA	NA	NA	NA	NA	NA	195.89	12.90	NA	182.99	NA	NA
MW-1	02/13/2001	NA	NA	NA	NA	NA	NA	NA	NA	195.89	14.28	NA	181.61	NA	NA
MW-1	05/29/2001	NA	NA	NA	NA	NA	NA	NA	NA	195.89	16.04	NA	179.85	NA	NA
MW-1	07/30/2001	NA	NA	NA	NA	NA	NA	NA	NA	195.89	17.53	NA	178.36	NA	NA
MW-1	12/12/2001	NA	NA	NA	NA	NA	NA	NA	NA	195.89	14.79	NA	181.10	NA	NA
MW-1	01/31/2002	<50	NA	<0.50	<0.50	<0.50	<0.50	NA	<5.0	195.89	13.71	NA	182.18	NA	NA
MW-1	05/31/2002	NA	NA	NA	NA	NA	NA	NA	NA	195.89	15.63	NA	180.26	NA	NA
MW-1	07/25/2002	NA	NA	NA	NA	NA	NA	NA	NA	195.89	17.08	NA	178.81	NA	NA

WELL CONCENTRATIONS
Shell-branded Service Station
6039 College Avenue
Oakland, CA

Well ID	Date	TPPH (ug/L)	TEPH (ug/L)	B (ug/L)	T (ug/L)	E (ug/L)	X (ug/L)	MTBE 8020 (ug/L)	MTBE 8260 (ug/L)	TOC (MSL)	Depth to Water (ft.)	Depth to SPH (ft.)	GW Elevation (MSL)	SPH Thickness (ft.)	DO (ppm)
---------	------	----------------	----------------	-------------	-------------	-------------	-------------	------------------------	------------------------	--------------	----------------------------	--------------------------	--------------------------	---------------------------	-------------

MW-1	11/26/2002	NA	NA	NA	NA	NA	NA	NA	NA	200.56	19.30	NA	181.26	NA	NA
MW-1	01/29/2003	<50	NA	<0.50	<0.50	<0.50	<0.50	NA	<5.0	200.56	13.90	NA	186.66	NA	NA
MW-1	06/03/2003	NA	NA	NA	NA	NA	NA	NA	NA	200.56	15.30	NA	185.26	NA	NA
MW-1	08/27/2003	NA	NA	NA	NA	NA	NA	NA	NA	200.56	17.32	NA	183.24	NA	NA

MW-2	02/15/1990	ND	560	ND	ND	ND	ND	NA	NA	194.27	16.90	NA	177.37	NA	NA
MW-2	04/19/1990	NA	NA	NA	NA	NA	NA	NA	NA	194.27	17.69	NA	176.58	NA	NA
MW-2	05/14/1990	ND	ND	ND	ND	ND	ND	NA	NA	194.27	18.01	NA	176.26	NA	NA
MW-2	06/21/1990	NA	NA	NA	NA	NA	NA	NA	NA	194.27	17.39	NA	176.88	NA	NA
MW-2	09/12/1990	ND	ND	ND	ND	ND	ND	NA	NA	194.27	19.00	NA	175.27	NA	NA
MW-2	11/27/1990	ND	ND	ND	ND	ND	ND	NA	NA	194.27	19.44	NA	174.83	NA	NA
MW-2	03/08/1991	ND	ND	ND	ND	ND	ND	NA	NA	194.27	15.96	NA	178.31	NA	NA
MW-2	06/03/1991	ND	ND	ND	ND	ND	ND	NA	NA	194.27	17.00	NA	177.27	NA	NA
MW-2	08/30/1991	ND	ND	ND	ND	ND	ND	NA	NA	194.27	18.95	NA	175.32	NA	NA
MW-2	11/22/1991	<50	<50	<0.5	<0.5	<0.5	<0.5	NA	NA	194.27	19.55	NA	174.72	NA	NA
MW-2	03/18/1992	<30	NA	<0.3	<0.3	<0.3	<0.3	NA	NA	194.27	12.91	NA	181.36	NA	NA
MW-2	05/28/1992	<50	NA	<0.5	<0.5	<0.5	<0.5	NA	NA	194.27	16.25	NA	178.02	NA	NA
MW-2	08/19/1992	<50	NA	<0.5	2	1.2	1.9	NA	NA	194.27	18.21	NA	176.06	NA	NA
MW-2	11/17/1992	<50	NA	<0.5	2	1.2	1.9	NA	NA	194.27	19.15	NA	175.12	NA	NA
MW-2	02/12/1993	<50	NA	<0.5	<0.5	<0.5	<0.5	NA	NA	194.27	11.60	NA	182.67	NA	NA
MW-2	06/10/1993	<50	NA	<0.5	<0.5	<0.5	<0.5	NA	NA	194.27	14.14	NA	180.13	NA	NA
MW-2	08/18/1993	<50	NA	<0.5	<0.5	<0.5	<0.5	NA	NA	194.27	16.10	NA	178.17	NA	NA
MW-2	11/19/1993	<50	NA	<0.5	<0.5	<0.5	<0.5	NA	NA	194.27	18.77	NA	175.50	NA	NA
MW-2	02/28/1994	<50	NA	<0.5	<0.5	<0.5	1.6	NA	NA	194.27	14.35	NA	179.92	NA	NA
MW-2	05/04/1994	<50	NA	<0.5	<0.5	<0.5	<0.5	NA	NA	194.27	16.34	NA	177.93	NA	NA
MW-2	08/10/1994	<50	NA	<0.5	<0.5	<0.5	<0.5	NA	NA	194.27	15.79	NA	178.48	NA	NA
MW-2	11/08/1994	<50	NA	<0.5	<0.5	<0.5	<0.5	NA	NA	194.27	15.04	NA	179.23	NA	NA

WELL CONCENTRATIONS
Shell-branded Service Station
6039 College Avenue
Oakland, CA

Well ID	Date	TPPH (ug/L)	TEPH (ug/L)	B (ug/L)	T (ug/L)	E (ug/L)	X (ug/L)	MTBE 8020 (ug/L)	MTBE 8260 (ug/L)	TOC (MSL)	Depth to Water (ft.)	Depth to SPH (ft.)	GW Elevation (MSL)	SPH Thickness (ft.)	DO (ppm)
MW-2	02/01/1995	<50	NA	<0.5	<0.5	<0.5	<0.5	NA	NA	194.27	10.08	NA	184.19	NA	NA
MW-2	05/10/1995	<50	NA	<0.5	<0.5	<0.5	<0.5	NA	NA	194.27	11.68	NA	182.59	NA	NA
MW-2	08/24/1995	<50	NA	<0.5	<0.5	<0.5	<0.5	NA	NA	194.27	14.94	NA	179.33	NA	NA
MW-2	11/10/1995	<50	NA	1.7	0.8	1.4	4.9	NA	NA	194.27	13.36	NA	180.91	NA	NA
MW-2	02/24/1996	<50	NA	<0.5	<0.5	<0.5	<0.5	NA	NA	194.27	9.90	NA	184.37	NA	NA
MW-2	05/22/1996	<50	NA	<0.5	<0.5	<0.5	<0.5	<2.5	NA	194.27	11.80	NA	182.47	NA	NA
MW-2	08/19/1996	<50	NA	<0.5	<0.5	<0.5	<0.5	<2.5	NA	194.27	15.08	NA	179.19	NA	NA
MW-2	12/05/1996	<50	NA	1.5	1.6	1.2	5.2	<2.5	NA	194.27	15.16	NA	179.11	NA	NA
MW-2	01/08/1997	<50	NA	<0.50	<0.50	<0.50	<0.50	<2.5	NA	194.27	9.76	NA	184.51	NA	NA
MW-2	02/20/1997	<50	NA	<0.50	<0.50	<0.50	<0.50	<2.5	NA	194.27	11.47	NA	182.80	NA	NA
MW-2	05/30/1997	NA	NA	NA	NA	NA	NA	NA	NA	194.27	14.30	NA	179.97	NA	NA
MW-2	08/18/1997	NA	NA	NA	NA	NA	NA	NA	NA	194.27	16.33	NA	177.94	NA	NA
MW-2	11/03/1997	NA	NA	NA	NA	NA	NA	NA	NA	194.27	15.54	NA	178.73	NA	NA
MW-2	01/20/1998	NA	NA	NA	NA	NA	NA	NA	NA	194.27	9.43	NA	184.84	NA	NA
MW-2	06/05/1998	NA	NA	NA	NA	NA	NA	NA	NA	194.27	11.45	NA	182.82	NA	NA
MW-2	07/23/1998	NA	NA	NA	NA	NA	NA	NA	NA	194.27	12.71	NA	181.56	NA	NA
MW-2	11/19/1998	NA	NA	NA	NA	NA	NA	NA	NA	194.27	13.98	NA	180.29	NA	NA
MW-2	02/03/1999	NA	NA	NA	NA	NA	NA	NA	NA	194.27	15.01	NA	179.26	NA	NA
MW-2	06/04/1999	NA	NA	NA	NA	NA	NA	NA	NA	194.27	13.93	NA	180.34	NA	NA
MW-2	08/31/1999	NA	NA	NA	NA	NA	NA	NA	NA	194.27	16.22	NA	178.05	NA	NA
MW-2	12/10/1999	NA	NA	NA	NA	NA	NA	NA	NA	194.27	17.58	NA	176.69	NA	NA
MW-2	02/11/2000	NA	NA	NA	NA	NA	NA	NA	NA	194.27	14.10	NA	180.17	NA	NA
MW-2	05/04/2000	NA	NA	NA	NA	NA	NA	NA	NA	194.27	12.72	NA	181.55	NA	NA
MW-2	08/31/2000	NA	NA	NA	NA	NA	NA	NA	NA	194.27	14.39	NA	179.88	NA	NA
MW-2	11/30/2000	NA	NA	NA	NA	NA	NA	NA	NA	194.27	17.00	NA	177.27	NA	NA
MW-2	02/13/2001	NA	NA	NA	NA	NA	NA	NA	NA	194.27	13.58	NA	180.69	NA	NA
MW-2	05/29/2001	NA	NA	NA	NA	NA	NA	NA	NA	194.27	15.26	NA	179.01	NA	NA

WELL CONCENTRATIONS
Shell-branded Service Station
6039 College Avenue
Oakland, CA

Well ID	Date	TPPH (ug/L)	TEPH (ug/L)	B (ug/L)	T (ug/L)	E (ug/L)	X (ug/L)	MTBE 8020 (ug/L)	MTBE 8260 (ug/L)	TOC (MSL)	Depth to Water (ft.)	Depth to SPH (ft.)	GW Elevation (MSL)	SPH Thickness (ft.)	DO (ppm)
---------	------	----------------	----------------	-------------	-------------	-------------	-------------	------------------------	------------------------	--------------	----------------------------	--------------------------	--------------------------	---------------------------	-------------

MW-2	07/30/2001	NA	NA	NA	NA	NA	NA	NA	NA	194.27	16.67	NA	177.60	NA	NA
MW-2	12/12/2001	NA	NA	NA	NA	NA	NA	NA	NA	194.27	13.91	NA	180.36	NA	NA
MW-2	01/31/2002	<50	NA	<0.50	<0.50	<0.50	<0.50	NA	<5.0	194.27	12.96	NA	181.31	NA	NA
MW-2	05/31/2002	NA	NA	NA	NA	NA	NA	NA	NA	194.27	14.85	NA	179.42	NA	NA
MW-2	07/25/2002	NA	NA	NA	NA	NA	NA	NA	NA	194.27	16.24	NA	178.03	NA	NA
MW-2	11/26/2002	NA	NA	NA	NA	NA	NA	NA	NA	198.95	18.35	NA	180.60	NA	NA
MW-2	01/29/2003	<50	NA	<0.50	<0.50	<0.50	<0.50	NA	<5.0	198.95	13.19	NA	185.76	NA	NA
MW-2	06/03/2003	NA	NA	NA	NA	NA	NA	NA	NA	198.95	14.53	NA	184.42	NA	NA
MW-2	08/27/2003	NA	NA	NA	NA	NA	NA	NA	NA	198.95	16.46	NA	182.49	NA	NA

MW-3	02/15/1990	4,700	3,100	320	29	110	33	NA	NA	192.52	15.81	NA	176.71	NA	NA
MW-3	04/19/1990	NA	NA	NA	NA	NA	NA	NA	NA	192.52	16.57	NA	175.95	NA	NA
MW-3	05/14/1990	1,400	60	130	8.6	40	17	NA	NA	192.52	16.97	NA	175.55	NA	NA
MW-3	06/21/1990	NA	NA	NA	NA	NA	NA	NA	NA	192.52	16.27	NA	176.25	NA	NA
MW-3	09/12/1990	2,000	1,500	58	5.8	16	15	NA	NA	192.52	18.78	NA	173.74	NA	NA
MW-3	11/27/1990	540	240	18	1.5	8.7	2.5	NA	NA	192.52	18.27	NA	174.25	NA	NA
MW-3	03/08/1991	3,400	2,100	630	33	270	18	NA	NA	192.52	14.86	NA	177.66	NA	NA
MW-3	06/03/1991	1,700	690a	260	13	98	24	NA	NA	192.52	15.84	NA	176.68	NA	NA
MW-3	08/30/1991	870	370a	44	6.1	10	2.9	NA	NA	192.52	17.79	NA	174.73	NA	NA
MW-3	11/22/1991	310	140	18	1.2	3.3	2.9	NA	NA	192.52	18.40	NA	174.12	NA	NA
MW-3	03/18/1992	67,100	1,900	620	28	220	38	NA	NA	192.52	12.03	NA	180.49	NA	NA
MW-3	05/28/1992	2,300	1,100a	200	9	71	17	NA	NA	192.52	15.16	NA	177.36	NA	NA
MW-3	08/19/1992	5,700	1,000a	71	77	52	130	NA	NA	192.52	17.03	NA	175.49	NA	NA
MW-3	11/17/1992	3,600	160a	16	8.6	24	50	NA	NA	192.52	17.94	NA	174.58	NA	NA
MW-3	02/12/1993	4,700	560a	820	58	130	77	NA	NA	192.52	9.16	NA	183.36	NA	NA
MW-3	06/10/1993	2,200	NA	310	23	89	23	NA	NA	192.52	13.20	NA	179.32	NA	NA
MW-3	08/18/1993	260	NA	27	2	7	2.2	NA	NA	192.52	14.93	NA	177.59	NA	NA

WELL CONCENTRATIONS
Shell-branded Service Station
6039 College Avenue
Oakland, CA

Well ID	Date	TPPH (ug/L)	TEPH (ug/L)	B (ug/L)	T (ug/L)	E (ug/L)	X (ug/L)	MTBE 8020 (ug/L)	MTBE 8260 (ug/L)	TOC (MSL)	Depth to Water (ft.)	Depth to SPH (ft.)	GW Elevation (MSL)	SPH Thickness (ft.)	DO (ppm)
MW-3	11/19/1993	1,500a	NA	24	54	37	17	NA	NA	192.52	17.58	NA	174.94	NA	NA
MW-3	02/28/1994	2,700	NA	65	5.2	16	6.3	NA	NA	192.52	13.30	NA	179.22	NA	NA
MW-3	05/04/1994	780	NA	120	7.5	21	6.9	NA	NA	192.52	15.25	NA	177.27	NA	NA
MW-3	08/10/1994	920	NA	20	2.3	3	2.2	NA	NA	192.52	16.63	NA	175.89	NA	NA
MW-3	11/08/1994	1,300	NA	180	16	7	12	NA	NA	192.52	13.88	NA	178.64	NA	NA
MW-3	02/01/1995	1,400	NA	210	8.5	11	8.7	NA	NA	192.52	9.25	NA	183.27	NA	NA
MW-3	05/10/1995	460	NA	97	10	1	19	NA	NA	192.52	10.76	NA	181.74	NA	NA
MW-3	08/24/1995	640	NA	68	21	14	19	NA	NA	192.52	13.90	NA	178.62	NA	NA
MW-3	11/10/1995	350	NA	15	2.3	1.2	2.5	NA	NA	192.52	16.20	NA	176.32	NA	NA
MW-3	02/24/1996	3,300	NA	240	53	38	55	NA	NA	192.52	8.93	NA	183.59	NA	NA
MW-3	05/22/1996	1,300	NA	110	15	<10	<10	3,500	NA	192.52	10.86	NA	181.66	NA	NA
MW-3	08/19/1996	350	NA	15	3.3	3.4	3.3	340	NA	192.52	13.97	NA	178.55	NA	NA
MW-3	12/05/1996	290	NA	12	7.6	5.4	16	370	NA	192.52	14.06	NA	178.46	NA	NA
MW-3	02/20/1997	980	NA	69	7.9	14	15	3,200	NA	192.52	10.60	NA	181.92	NA	NA
MW-3	05/30/1997	NA	NA	NA	NA	NA	NA	NA	NA	192.52	13.26	NA	179.26	NA	NA
MW-3	08/18/1997	NA	NA	NA	NA	NA	NA	NA	NA	192.52	15.21	NA	177.31	NA	NA
MW-3	11/03/1997	NA	NA	NA	NA	NA	NA	NA	NA	192.52	14.49	NA	178.03	NA	NA
MW-3	01/20/1998	3,100	NA	360	1,000	73	420	59,000	NA	192.52	8.43	NA	184.09	NA	NA
MW-3	06/05/1998	NA	NA	NA	NA	NA	NA	NA	NA	192.52	10.55	NA	181.97	NA	NA
MW-3	07/23/1998	NA	NA	NA	NA	NA	NA	NA	NA	192.52	11.80	NA	180.72	NA	NA
MW-3	11/19/1998	NA	NA	NA	NA	NA	NA	NA	NA	192.52	11.97	NA	180.55	NA	NA
MW-3	02/03/1999	<10,000	NA	840	131	<100	316	27,600	NA	192.52	13.55	NA	178.97	NA	2.3
MW-3	06/04/1999	NA	NA	NA	NA	NA	NA	NA	NA	192.52	12.90	NA	179.62	NA	NA
MW-3	08/31/1999	1,550	NA	232	<10.0	125	293	4,620	2,460b	192.52	14.99	NA	177.53	NA	3.4
MW-3	12/10/1999	NA	NA	NA	NA	NA	NA	NA	NA	192.52	16.35	NA	176.17	NA	NA
MW-3	02/11/2000	10,900	NA	1,030	<50.0	308	1,000	19,300	NA	192.52	12.85	NA	179.67	NA	1.0
MW-3	05/04/2000	NA	NA	NA	NA	NA	NA	NA	NA	192.52	17.05	NA	175.47	NA	NA

WELL CONCENTRATIONS
Shell-branded Service Station
6039 College Avenue
Oakland, CA

Well ID	Date	TPPH (ug/L)	TEPH (ug/L)	B (ug/L)	T (ug/L)	E (ug/L)	X (ug/L)	MTBE 8020 (ug/L)	MTBE 8260 (ug/L)	TOC (MSL)	Depth to Water (ft)	Depth to SPH (ft)	GW Elevation (MSL)	SPH Thickness (ft)	DO (ppm)
---------	------	----------------	----------------	-------------	-------------	-------------	-------------	------------------------	------------------------	--------------	---------------------------	-------------------------	--------------------------	--------------------------	-------------

MW-3	08/31/2000	2,560	NA	165	7.19	77.6	183	4,090	NA	192.52	14.26	NA	178.26	NA	c
MW-3	11/30/2000	NA	NA	NA	NA	NA	NA	NA	NA	192.52	15.75	NA	176.77	NA	NA
MW-3	02/13/2001	5,880	NA	563	<50.0	282	472	8,960	NA	192.52	13.05	NA	179.47	NA	3.6
MW-3	05/29/2001	1,800	NA	130	<5.0	84	100	NA	1,900	192.52	13.84	NA	178.68	NA	NA
MW-3	07/30/2001	2,700	NA	250	8.8	130	120	NA	5,200	192.52	15.46	NA	177.06	NA	NA
MW-3	12/12/2001	<10,000	NA	720	<100	260	260	NA	6,600	192.52	12.93	NA	179.59	NA	NA
MW-3	01/31/2002	11,000	NA	750	14	570	510	NA	5,800	192.52	11.88	NA	180.64	NA	NA
MW-3	05/31/2002	5,100	NA	410	8.6	300	190	NA	3,600	192.52	13.65	NA	178.87	NA	NA
MW-3	07/25/2002	2,100	NA	170	<10	73	33	NA	2,600	192.52	15.04	NA	177.48	NA	NA
MW-3	11/26/2002	510	NA	26	<2.0	<2.0	2.1	NA	940	197.18	17.15	NA	180.03	NA	NA
MW-3	01/29/2003	6,000	NA	460	8.5	250	87	NA	3,500	197.18	12.21	NA	184.97	NA	NA
MW-3	06/03/2003	5,300	NA	350	<25	130	51	NA	2,200	197.18	13.40	NA	183.78	NA	NA
MW-3	08/27/2003	700 a	NA	100	<5.0	20	<10	NA	810	197.18	15.14	NA	182.04	NA	NA

MW-4	02/15/1990	ND	1,200	ND	ND	ND	ND	NA	NA	193.37	16.73	NA	176.65	NA	NA
MW-4	04/19/1990	NA	NA	NA	NA	NA	NA	NA	NA	193.37	17.48	NA	175.89	NA	NA
MW-4	05/14/1990	650	350	160	7	1.9	3.1	NA	NA	193.37	17.88	NA	175.49	NA	NA
MW-4	06/21/1990	NA	NA	NA	NA	NA	NA	NA	NA	193.37	17.18	NA	176.19	NA	NA
MW-4	09/12/1990	440	260	91	1.1	0.75	0.79	NA	NA	193.37	17.85	NA	175.52	NA	NA
MW-4	11/27/1990	470	2,400	64	1.2	0.8	2.7	NA	NA	193.37	19.16	NA	174.21	NA	NA
MW-4	03/08/1991	1,100	2,600	330	3.5	88	5.8	NA	NA	193.37	15.77	NA	177.60	NA	NA
MW-4	06/03/1991	670	1,100	240	2.3	1.6	2.3	NA	NA	193.37	16.77	NA	176.60	NA	NA
MW-4	08/30/1991	570	280	64	1.8	0.9	0.9	NA	NA	193.37	18.71	NA	174.66	NA	NA
MW-4	11/22/1991	NA	NA	NA	NA	NA	NA	NA	NA	193.37	NA	NA	NA	NA	NA
MW-4	01/15/1992	NA	NA	NA	NA	NA	NA	NA	NA	193.37	NA	NA	NA	NA	NA
MW-4	02/15/1992	NA	NA	NA	NA	NA	NA	NA	NA	193.37	NA	NA	NA	NA	NA
MW-4	03/18/1992	NA	NA	NA	NA	NA	NA	NA	NA	193.37	13.15	NA	180.41	0.24	NA

WELL CONCENTRATIONS
Shell-branded Service Station
6039 College Avenue
Oakland, CA

Well ID	Date	TPPH (ug/L)	TEPH (ug/L)	B (ug/L)	T (ug/L)	E (ug/L)	X (ug/L)	MTBE 8020 (ug/L)	MTBE 8260 (ug/L)	TOC (MSL)	Depth to Water (ft)	Depth to SPH (ft)	GW Elevation (MSL)	SPH Thickness (ft)	DO (ppm)
MW-4	04/29/1992	NA	NA	NA	NA	NA	NA	NA	NA	193.37	NA	NA	NA	NA	NA
MW-4	05/28/1992	NA	NA	NA	NA	NA	NA	NA	NA	193.37	16.22	NA	177.25	0.12	NA
MW-4	08/19/1992	NA	NA	NA	NA	NA	NA	NA	NA	193.37	18.05	NA	175.39	0.09	NA
MW-4	11/17/1992	NA	NA	NA	NA	NA	NA	NA	NA	193.37	18.89	NA	174.48	NA	NA
MW-4	02/12/1993	NA	NA	NA	NA	NA	NA	NA	NA	193.37	11.78	NA	181.59	<0.01	NA
MW-4	06/10/1993	NA	NA	NA	NA	NA	NA	NA	NA	193.37	14.20	NA	179.17	0.02	NA
MW-4	08/18/1993	NA	NA	NA	NA	NA	NA	NA	NA	193.37	15.95	NA	177.43	0.01	NA
MW-4	11/19/1993	NA	NA	NA	NA	NA	NA	NA	NA	193.37	18.48	NA	174.90	0.01	NA
MW-4	02/28/1994	NA	NA	NA	NA	NA	NA	NA	NA	193.37	14.60	NA	178.77	0.01	NA
MW-4	05/04/1994	NA	NA	NA	NA	NA	NA	NA	NA	193.37	16.15	NA	177.22	<0.01	NA
MW-4	08/10/1994	NA	NA	NA	NA	NA	NA	NA	NA	193.37	17.58	NA	175.81	0.02	NA
MW-4	11/10/1994	NA	NA	NA	NA	NA	NA	NA	NA	193.37	15.05	NA	178.36	0.05	NA
MW-4	02/01/1995	NA	NA	NA	NA	NA	NA	NA	NA	193.37	10.71	NA	182.69	0.04	NA
MW-4	05/10/1995	NA	NA	NA	NA	NA	NA	NA	NA	193.37	11.90	NA	181.52	0.06	NA
MW-4	08/24/1995	NA	NA	NA	NA	NA	NA	NA	NA	193.37	14.97	NA	178.42	0.02	NA
MW-4	11/10/1995	4,700	NA	100	22	23	38	NA	NA	193.37	17.27	NA	176.10	<0.01	NA
MW-4	02/24/1996	NA	NA	NA	NA	NA	NA	NA	NA	193.37	10.44	NA	182.95	0.03	NA
MW-4	05/22/1996	NA	NA	NA	NA	NA	NA	NA	NA	193.37	11.88	NA	181.51	0.03	NA
MW-4	08/19/1996	NA	NA	NA	NA	NA	NA	NA	NA	193.37	15.23	NA	178.16	0.02	NA
MW-4	12/05/1996	NA	NA	NA	NA	NA	NA	NA	NA	193.37	14.70	NA	178.69	0.02	NA
MW-4	01/08/1997	<10,000	NA	<100	<100	<100	<100	24,000	NA	193.37	11.60	NA	181.79	0.02	NA
MW-4	02/20/1997	<10,000	NA	490	<100	<100	<100	59,000	NA	193.37	11.91	NA	181.46	NA	NA
MW-4	05/30/1997	<2,000	NA	72	<20	<20	<20	6,100	NA	193.37	14.68	NA	178.69	NA	NA
MW-4	08/18/1997	<5,000	NA	150	570	<50	130	31,000	NA	193.37	15.07	NA	178.30	NA	NA
MW-4	11/03/1997	32,000	NA	1,100	6,100	640	3,600	78,000	NA	193.37	15.87	NA	177.50	NA	NA
MW-4	01/20/1998	NA	NA	NA	NA	NA	NA	NA	NA	193.37	10.25	NA	183.62	0.62	NA
MW-4	06/05/1998	NA	NA	NA	NA	NA	NA	NA	NA	193.37	11.62	NA	181.80	0.06	NA

WELL CONCENTRATIONS
Shell-branded Service Station
6039 College Avenue
Oakland, CA

Well ID	Date	TPPH (ug/L)	TEPH (ug/L)	B (ug/L)	T (ug/L)	E (ug/L)	X (ug/L)	MTBE 8020 (ug/L)	MTBE 8260 (ug/L)	TOC (MSL)	Depth to Water (ft)	Depth to SPH (ft)	GW Elevation (MSL)	SPH Thickness (ft)	DO (ppm)
---------	------	----------------	----------------	-------------	-------------	-------------	-------------	------------------------	------------------------	--------------	---------------------------	-------------------------	--------------------------	--------------------------	-------------

MW-4	07/23/1998	NA	NA	NA	NA	NA	NA	NA	NA	193.37	13.93	NA	179.51	0.09	NA
MW-4	11/19/1998	NA	NA	NA	NA	NA	NA	NA	NA	193.37	14.07	14.03	179.33	0.04	NA
MW-4	12/09/1998	NA	NA	NA	NA	NA	NA	NA	NA	193.37	15.84	15.81	177.55	0.03	NA
MW-4	02/03/1999	NA	NA	NA	NA	NA	NA	NA	NA	193.37	15.58	15.55	177.81	0.03	NA
MW-4	06/04/1999	NA	NA	NA	NA	NA	NA	NA	NA	193.37	14.04	14.02	179.35	0.02	NA
MW-4	08/31/1999	NA	NA	NA	NA	NA	NA	NA	NA	193.37	16.15	16.12	177.24	0.03	NA
MW-4	12/10/1999	NA	NA	NA	NA	NA	NA	NA	NA	193.37	17.41	17.31	176.04	0.10	NA
MW-4	02/11/2000	47,200	NA	905	<200	479	3,690	27,400	30,300b	193.37	14.82	NA	178.55	NA	0.6
MW-4	05/04/2000	30,800	NA	1,650	<100	574	3,310	28,600	31,200b	193.37	12.64	NA	180.73	NA	2.1
MW-4	08/31/2000	5,470	NA	366	<10.0	296	834	3,950	NA	193.37	16.47	NA	176.90	NA	c
MW-4	11/30/2000	20,700	NA	525	<50.0	447	1,570	2,440	4,280b	193.37	17.67	NA	175.70	NA	3.3
MW-4	02/13/2001	16,200	NA	909	<50.0	514	2,390	21,300	20,300	193.37	13.30	NA	180.07	NA	2.4
MW-4	05/29/2001	Well Inaccessible		NA	NA	NA	NA	NA	NA	193.37	NA	NA	NA	NA	NA
MW-4	05/31/2001	NA	NA	NA	NA	NA	NA	NA	NA	193.37	15.08	15.03	178.33	0.05	NA
MW-4	07/30/2001	6,700	NA	260	5.7	190	280	NA	3,900	193.37	16.29	16.28	177.09	0.01	NA
MW-4	12/12/2001	15,000	NA	1,300	<50	520	990	NA	20,000	193.37	13.81	NA	179.56	NA	NA
MW-4	01/31/2002	12,000	NA	1,500	<25	570	800	NA	12,000	193.37	12.80	NA	180.57	NA	NA
MW-4	05/31/2002	8,200	NA	1,100	<20	380	340	NA	8,100	193.37	14.59	NA	178.78	NA	NA
MW-4	07/25/2002	3,300	NA	290	<10	98	74	NA	2,600	193.37	15.94	NA	177.43	NA	NA
MW-4	11/26/2002	1,400	NA	89	2.9	14	14	NA	770	198.03	18.10	NA	179.93	NA	NA
MW-4	01/29/2003	7,400	NA	1,400	<20	140	200	NA	8,900	198.03	13.08	NA	184.95	NA	NA
MW-4	06/03/2003	5,600	NA	990	<10	110	53	NA	3,700	198.03	14.29	NA	183.74	NA	NA
MW-4	08/27/2003	1,500	NA	220	<10	31	<20	NA	1,100	198.03	16.14	NA	181.89	NA	NA

MW-5	08/30/1991	ND	80	ND	ND	ND	ND	NA	NA	190.35	16.74	NA	173.61	NA	NA
MW-5	11/22/1991	<50	<50	<0.5	<0.5	<0.5	<0.5	NA	NA	190.35	17.27	NA	173.08	NA	NA
MW-5	03/18/1992	<30	<50	<0.3	<0.3	<0.3	<0.3	NA	NA	190.35	11.28	NA	179.07	NA	NA

WELL CONCENTRATIONS
Shell-branded Service Station
6039 College Avenue
Oakland, CA

Well ID	Date	TPPH (ug/L)	TEPH (ug/L)	B (ug/L)	T (ug/L)	E (ug/L)	X (ug/L)	MTBE 8020 (ug/L)	MTBE 8260 (ug/L)	TOC (MSL)	Depth to Water (ft.)	Depth to SPH (ft.)	GW Elevation (MSL)	SPH Thickness (ft.)	DO (ppm)
MW-5	05/28/1992	Well Inaccessible		NA	NA	NA	NA	NA	NA	190.35	NA	NA	NA	NA	NA
MW-5	08/19/1992	<50	<50	<0.5	<0.5	<0.5	<0.5	NA	NA	190.35	15.99	NA	174.36	NA	NA
MW-5	11/17/1992	<50	<50	<0.5	<0.5	<0.5	<0.5	NA	NA	190.35	16.84	NA	173.51	NA	NA
MW-5	02/12/1993	<50	<50	<0.5	<0.5	<0.5	<0.5	NA	NA	190.35	10.30	NA	180.05	NA	NA
MW-5	06/10/1993	<50	NA	<0.5	<0.5	<0.5	<0.5	NA	NA	190.35	12.36	NA	177.99	NA	NA
MW-5	08/18/1993	<50	NA	<0.5	<0.5	<0.5	<0.5	NA	NA	190.35	14.02	NA	176.33	NA	NA
MW-5	11/19/1993	<50	NA	<0.5	<0.5	<0.5	<0.5	NA	NA	190.35	16.50	NA	173.85	NA	NA
MW-5	02/28/1994	<50	NA	<0.5	<0.5	<0.5	<0.5	NA	NA	190.35	12.55	NA	177.80	NA	NA
MW-5	05/04/1994	<50	NA	<0.5	<0.5	<0.5	<0.5	NA	NA	190.35	14.27	NA	176.08	NA	NA
MW-5	08/10/1994	70a	NA	<0.5	<0.5	<0.5	<0.5	NA	NA	190.35	15.60	NA	174.75	NA	NA
MW-5	11/08/1994	<50	NA	<0.5	<0.5	<0.5	<0.5	NA	NA	190.35	12.85	NA	177.50	NA	NA
MW-5	02/01/1995	<50	NA	<0.5	<0.5	<0.5	<0.5	NA	NA	190.35	8.98	NA	181.37	NA	NA
MW-5	05/10/1995	<50	NA	<0.5	<0.5	<0.5	<0.5	NA	NA	190.35	10.16	NA	180.19	NA	NA
MW-5	08/24/1995	<50	NA	<0.5	<0.5	<0.5	<0.5	NA	NA	190.35	12.98	NA	177.37	NA	NA
MW-5	11/10/1995	<50	NA	<0.5	<0.5	<0.5	<0.5	NA	NA	190.35	15.12	NA	175.23	NA	NA
MW-5	02/24/1996	NA	NA	NA	NA	NA	NA	NA	NA	190.35	NA	NA	NA	NA	NA
MW-5	05/22/1996	<2,000	NA	<20	<20	<20	<20	NA	NA	190.35	10.10	NA	180.25	NA	NA
MW-5	08/19/1996	<2,500	NA	<25	<25	<25	<25	NA	NA	190.35	13.09	NA	177.26	NA	NA
MW-5	12/05/1996	<500	NA	<5.0	<5.0	<5.0	<5.0	NA	NA	190.35	13.31	NA	177.04	NA	NA
MW-5	02/20/1997	<1,000	NA	<10	<10	<10	<10	NA	NA	190.35	9.55	NA	180.80	NA	NA
MW-5	05/30/1997	NA	NA	NA	NA	NA	NA	NA	NA	190.35	12.40	NA	177.95	NA	NA
MW-5	08/18/1997	NA	NA	NA	NA	NA	NA	NA	NA	190.35	14.19	NA	176.16	NA	NA
MW-5	11/03/1997	NA	NA	NA	NA	NA	NA	NA	NA	190.35	13.66	NA	176.69	NA	NA
MW-5	01/20/1998	<50	NA	<0.50	<0.50	<0.50	<0.50	1,600	NA	190.35	8.06	NA	182.29	NA	NA
MW-5	06/05/1998	NA	NA	NA	NA	NA	NA	NA	NA	190.35	9.95	NA	180.40	NA	NA
MW-5	07/23/1998	NA	NA	NA	NA	NA	NA	NA	NA	190.35	11.10	NA	179.25	NA	NA
MW-5	11/19/1998	NA	NA	NA	NA	NA	NA	NA	NA	190.35	12.21	NA	178.14	NA	NA

WELL CONCENTRATIONS
Shell-branded Service Station
6039 College Avenue
Oakland, CA

Well ID	Date	TPPH (ug/L)	TEPH (ug/L)	B (ug/L)	T (ug/L)	E (ug/L)	X (ug/L)	MTBE 8020 (ug/L)	MTBE 8260 (ug/L)	TOC (MSL)	Depth to Water (ft.)	Depth to SPH (ft.)	GW Elevation (MSL)	SPH Thickness (ft.)	DO (ppm)
MW-5	02/03/1999	<500	NA	<5.00	<5.00	<5.00	<5.00	2850	NA	190.35	12.99	NA	177.36	NA	2.4
MW-5	06/04/1999	NA	NA	NA	NA	NA	NA	NA	NA	190.35	12.08	NA	178.27	NA	NA
MW-5	08/31/1999	<50.0	NA	<0.500	<0.500	<0.500	<0.500	4,260	NA	190.35	14.05	NA	176.30	NA	2.7
MW-5	12/10/1999	NA	NA	NA	NA	NA	NA	NA	NA	190.35	15.41	NA	174.94	NA	NA
MW-5	02/11/2000	<50.0	NA	<0.500	<0.500	<0.500	<0.500	<2.50	NA	190.35	12.42	NA	177.93	NA	1.7
MW-5	05/04/2000	NA	NA	NA	NA	NA	NA	NA	NA	190.35	11.13	NA	179.22	NA	NA
MW-5	08/31/2000	<500	NA	<5.00	<5.00	<5.00	<5.00	13,000	15,700b	190.35	13.53	NA	176.82	NA	c
MW-5	11/30/2000	NA	NA	NA	NA	NA	NA	NA	NA	190.35	14.65	NA	175.70	NA	NA
MW-5	02/13/2001	<50.0	NA	<0.500	<0.500	<0.500	<0.500	2,440	NA	190.35	12.05	NA	178.30	NA	4.1
MW-5	05/29/2001	<500	NA	<5.0	<5.0	<5.0	<5.0	NA	1,300	190.35	13.26	NA	177.09	NA	NA
MW-5	07/30/2001	<50	NA	<0.50	<0.50	<0.50	<0.50	NA	310	190.35	14.49	NA	175.86	NA	NA
MW-5	12/12/2001	<200	NA	<2.0	<2.0	<2.0	<2.0	NA	350	190.35	12.08	NA	178.27	NA	NA
MW-5	01/31/2002	61	NA	<0.50	<0.50	<0.50	<0.50	NA	280	190.35	11.29	NA	179.06	NA	NA
MW-5	05/31/2002	<50	NA	<0.50	<0.50	<0.50	<0.50	NA	130	190.35	12.75	NA	177.60	NA	NA
MW-5	07/25/2002	<50	NA	<0.50	<0.50	<0.50	<0.50	NA	190	190.35	14.12	NA	176.23	NA	NA
MW-5	11/26/2002	Unable to sample		NA	NA	NA	NA	NA	NA	195.01	16.17	NA	178.84	NA	NA
MW-5	12/06/2002	<50	NA	<0.50	<0.50	<0.50	<0.50	NA	24	195.01	16.39	NA	178.62	NA	NA
MW-5	01/29/2003	<50	NA	<0.50	<0.50	<0.50	<0.50	NA	100	195.01	11.20	NA	183.81	NA	NA
MW-5	06/03/2003	<250	NA	<2.5	<2.5	<2.5	<5.0	NA	120	195.01	12.53	NA	182.48	NA	NA
MW-5	08/27/2003	<50	NA	<0.50	<0.50	<0.50	<1.0	NA	19	195.01	14.32	NA	180.69	NA	NA
MW-6	09/21/1993	<50	<50	<0.5	<0.5	<0.5	<0.5	NA	NA	189.05	14.64	NA	174.41	NA	NA
MW-6	11/19/1993	NA	NA	NA	NA	NA	NA	NA	NA	189.05	NA	NA	NA	NA	NA
MW-6	02/28/1994	98a	NA	<0.5	<0.5	<0.5	<0.5	NA	NA	189.05	12.18	NA	176.87	NA	NA
MW-6	05/04/1994	<50	NA	<0.5	<0.5	<0.5	<0.5	NA	NA	189.05	13.62	NA	175.43	NA	NA
MW-6	08/10/1994	80a	NA	<0.5	<0.5	<0.5	<0.5	NA	NA	189.05	14.98	NA	174.07	NA	NA
MW-6	11/08/1994	NA	NA	NA	NA	NA	NA	NA	NA	189.05	12.20	NA	176.85	NA	NA

WELL CONCENTRATIONS
Shell-branded Service Station
6039 College Avenue
Oakland, CA

Well ID	Date	TPPH (ug/L)	TEPH (ug/L)	B (ug/L)	T (ug/L)	E (ug/L)	X (ug/L)	MTBE 8020 (ug/L)	MTBE 8260 (ug/L)	TOC (MSL)	Depth to Water (ft)	Depth to SPH (ft)	GW Elevation (MSL)	SPH Thickness (ft)	DO (ppm)
MW-6	02/01/1995	120	NA	3.5	21	3.4	22	NA	NA	189.05	8.70	NA	180.35	NA	NA
MW-6	05/10/1995	NA	NA	NA	NA	NA	NA	NA	NA	189.05	9.86	NA	179.19	NA	NA
MW-6	08/24/1995	80	NA	<0.5	<0.5	1.8	2.4	NA	NA	189.05	12.46	NA	176.59	NA	NA
MW-6	11/10/1995	<50	NA	<0.5	<0.5	<0.5	<0.5	NA	NA	189.05	14.56	NA	174.49	NA	NA
MW-6	11/10/1995	60	NA	<0.5	<0.5	<0.5	<0.5	NA	NA	189.05	14.56	NA	174.49	NA	NA
MW-6	02/24/1996	NA	NA	NA	NA	NA	NA	NA	NA	189.05	NA	NA	NA	NA	NA
MW-6	05/22/1996	<50	NA	<0.5	<0.5	<0.5	<0.5	290	NA	189.05	10.23	NA	178.82	NA	NA
MW-6	08/19/1996	<1,250	NA	<12	<12	<12	<12	1,100	NA	189.05	12.61	NA	176.44	NA	NA
MW-6	12/05/1996	<125	NA	<1.2	<1.2	<1.2	<1.2	440	NA	189.05	12.47	NA	176.58	NA	NA
MW-6	02/20/1997	<100	NA	<1.0	<1.0	<1.0	<1.0	480	NA	189.05	9.85	NA	179.20	NA	NA
MW-6	05/30/1997	NA	NA	NA	NA	NA	NA	NA	NA	189.05	11.96	NA	177.09	NA	NA
MW-6	08/18/1997	NA	NA	NA	NA	NA	NA	NA	NA	189.05	13.65	NA	175.40	NA	NA
MW-6	11/03/1997	NA	NA	NA	NA	NA	NA	NA	NA	189.05	NA	NA	NA	NA	NA
MW-6	01/20/1998	<50	NA	<0.50	<0.50	<0.50	<0.50	340	NA	189.05	7.76	NA	181.29	NA	NA
MW-6	06/05/1998	NA	NA	NA	NA	NA	NA	NA	NA	189.05	9.85	NA	179.20	NA	NA
MW-6	07/23/1998	NA	NA	NA	NA	NA	NA	NA	NA	189.05	10.99	NA	178.06	NA	NA
MW-6	11/19/1998	NA	NA	NA	NA	NA	NA	NA	NA	189.05	11.36	NA	177.69	NA	NA
MW-6	02/03/1999	Well Inaccessible		NA	NA	NA	NA	NA	NA	189.05	NA	NA	NA	NA	NA
MW-6	06/04/1999	Well Inaccessible		NA	NA	NA	NA	NA	NA	189.05	NA	NA	NA	NA	NA
MW-6	06/22/1999	<5,000	NA	<50.0	<50.0	<50.0	<50.0	2,800	NA	189.05	12.15	NA	176.90	NA	2.1
MW-6	08/31/1999	<50.0	NA	<0.500	<0.500	<0.500	<0.500	3,390	NA	189.05	13.62	NA	175.43	NA	2.5
MW-6	12/10/1999	NA	NA	NA	NA	NA	NA	NA	NA	189.05	14.98	NA	174.07	NA	NA
MW-6	02/11/2000	<50.0	NA	<0.500	<0.500	<0.500	<0.500	<2.50	NA	189.05	12.00	NA	177.05	NA	1.1
MW-6	05/04/2000	NA	NA	NA	NA	NA	NA	NA	NA	189.05	10.94	NA	178.11	NA	NA
MW-6	08/31/2000	<250	NA	<2.50	<2.50	<2.50	<2.50	4,460	NA	189.05	13.19	NA	175.86	NA	c
MW-6	11/30/2000	NA	NA	NA	NA	NA	NA	NA	NA	189.05	14.28	NA	174.77	NA	NA
MW-6	02/13/2001	Well Inaccessible		NA	NA	NA	NA	NA	NA	189.05	NA	NA	NA	NA	NA

WELL CONCENTRATIONS
Shell-branded Service Station
6039 College Avenue
Oakland, CA

Well ID	Date	TPPH (ug/L)	TEPH (ug/L)	B (ug/L)	T (ug/L)	E (ug/L)	X (ug/L)	MTBE 8020 (ug/L)	MTBE 8260 (ug/L)	TOC (MSL)	Depth to Water (ft.)	Depth to SPH (ft.)	GW Elevation (MSL)	SPH Thickness (ft.)	DO (ppm)
---------	------	----------------	----------------	-------------	-------------	-------------	-------------	------------------------	------------------------	--------------	----------------------------	--------------------------	--------------------------	---------------------------	-------------

MW-6	02/16/2001	<500	NA	<5.00	<5.00	<5.00	<5.00	3,910	NA	189.05	12.10	NA	176.95	NA	3.8
MW-6	05/29/2001	<500	NA	<5.0	<5.0	<5.0	<5.0	NA	2,000	189.05	12.94	NA	176.11	NA	NA
MW-6	07/30/2001	<500	NA	<5.0	<5.0	<5.0	<5.0	NA	2,700	189.05	14.10	NA	174.95	NA	NA
MW-6	12/12/2001	<500	NA	<5.0	<5.0	<5.0	<5.0	NA	2,100	189.05	12.11	NA	176.94	NA	NA
MW-6	01/31/2002	<500	NA	<5.0	<5.0	<5.0	<5.0	NA	2,000	189.05	11.16	NA	177.89	NA	NA
MW-6	05/31/2002	<500	NA	<5.0	<5.0	<5.0	<5.0	NA	1,800	189.05	12.52	NA	176.53	NA	NA
MW-6	07/25/2002	<500	NA	<5.0	<5.0	<5.0	<5.0	NA	1,800	189.05	13.68	NA	175.37	NA	NA
MW-6	11/26/2002	Well Inaccessible		NA	NA	NA	NA	NA	NA	193.75	NA	NA	NA	NA	NA
MW-6	12/06/2002	<50	NA	<0.50	<0.50	<0.50	<0.50	NA	280	193.75	16.01	NA	177.74	NA	NA
MW-6	01/29/2003	Well Inaccessible		NA	NA	NA	NA	NA	NA	193.75	NA	NA	NA	NA	NA
MW-6	02/05/2003	<50	NA	<0.50	<0.50	<0.50	<0.50	NA	120	193.75	11.71	NA	182.04	NA	NA
MW-6	06/03/2003	<50	NA	<0.50	<0.50	<0.50	<1.0	NA	69	193.75	12.33	NA	181.42	NA	NA
MW-6	08/27/2003	130	NA	<1.3	<1.3	<1.3	<2.5	NA	28	193.75	13.83	NA	179.92	NA	NA

T-1	05/30/1997	NA	NA	NA	NA	NA	NA	NA	NA	NA	Dry	NA	NA	NA	NA
T-1	08/18/1997	NA	NA	NA	NA	NA	NA	NA	NA	NA	Dry	NA	NA	NA	NA
T-1	11/03/1997	NA	NA	NA	NA	NA	NA	NA	NA	NA	Dry	NA	NA	NA	NA
T-1	01/20/1998	NA	NA	NA	NA	NA	NA	NA	NA	NA	Dry	NA	NA	NA	NA
T-1	06/05/1998	NA	NA	NA	NA	NA	NA	NA	NA	NA	Dry	NA	NA	NA	NA
T-1	07/23/1998	NA	NA	NA	NA	NA	NA	NA	NA	NA	Dry	NA	NA	NA	NA
T-1	11/19/1998	NA	NA	NA	NA	NA	NA	NA	NA	NA	Dry	NA	NA	NA	NA
T-1	02/03/1999	NA	NA	NA	NA	NA	NA	NA	NA	NA	Dry	NA	NA	NA	NA
T-1	06/04/1999	NA	NA	NA	NA	NA	NA	NA	NA	NA	Dry	NA	NA	NA	NA
T-1	08/31/1999	NA	NA	NA	NA	NA	NA	NA	NA	NA	Dry	NA	NA	NA	NA
T-1	12/10/1999	NA	NA	NA	NA	NA	NA	NA	NA	NA	Dry	NA	NA	NA	NA
T-1	02/11/2000	NA	NA	NA	NA	NA	NA	NA	NA	NA	Dry	NA	NA	NA	NA
T-1	05/04/2000	NA	NA	NA	NA	NA	NA	NA	NA	NA	Dry	NA	NA	NA	NA

WELL CONCENTRATIONS
Shell-branded Service Station
6039 College Avenue
Oakland, CA

Well ID	Date	TPPH (ug/L)	TEPH (ug/L)	B (ug/L)	T (ug/L)	E (ug/L)	X (ug/L)	MTBE 8020 (ug/L)	MTBE 8260 (ug/L)	TOC (MSL)	Depth to Water (ft.)	Depth to SPH (ft.)	GW Elevation (MSL)	SPH Thickness (ft.)	DO (ppm)
---------	------	----------------	----------------	-------------	-------------	-------------	-------------	------------------------	------------------------	--------------	----------------------------	--------------------------	--------------------------	---------------------------	-------------

T-1	08/31/2000	NA	NA	NA	NA	NA	NA	NA	NA	NA	Dry	NA	NA	NA	NA
T-1	11/30/2000	NA	NA	NA	NA	NA	NA	NA	NA	NA	Dry	NA	NA	NA	NA
T-1	02/13/2001	NA	NA	NA	NA	NA	NA	NA	NA	NA	Dry	NA	NA	NA	NA
T-1	05/29/2001	NA	NA	NA	NA	NA	NA	NA	NA	NA	Dry	NA	NA	NA	NA
T-1	07/30/2001	NA	NA	NA	NA	NA	NA	NA	NA	NA	Dry	NA	NA	NA	NA
T-1	12/12/2001	NA	NA	NA	NA	NA	NA	NA	NA	NA	Dry	NA	NA	NA	NA
T-1	01/31/2002	NA	NA	NA	NA	NA	NA	NA	NA	NA	Dry	NA	NA	NA	NA
T-1	05/22/2002 d	NA	NA	NA	NA	NA	NA	NA	NA	198.07	NA	NA	NA	NA	NA

T-2	05/30/1997	NA	NA	NA	NA	NA	NA	NA	NA	NA	Dry	NA	NA	NA	NA
T-2	08/18/1997	NA	NA	NA	NA	NA	NA	NA	NA	NA	Dry	NA	NA	NA	NA
T-2	11/03/1997	NA	NA	NA	NA	NA	NA	NA	NA	NA	Dry	NA	NA	NA	NA
T-2	01/20/1998	NA	NA	NA	NA	NA	NA	NA	NA	NA	Dry	NA	NA	NA	NA
T-2	06/05/1998	NA	NA	NA	NA	NA	NA	NA	NA	NA	Dry	NA	NA	NA	NA
T-2	07/23/1998	NA	NA	NA	NA	NA	NA	NA	NA	NA	Dry	NA	NA	NA	NA
T-2	11/19/1998	NA	NA	NA	NA	NA	NA	NA	NA	NA	Dry	NA	NA	NA	NA
T-2	02/03/1999	NA	NA	NA	NA	NA	NA	NA	NA	NA	Dry	NA	NA	NA	NA
T-2	06/04/1999	NA	NA	NA	NA	NA	NA	NA	NA	NA	Dry	NA	NA	NA	NA
T-2	08/31/1999	NA	NA	NA	NA	NA	NA	NA	NA	NA	Dry	NA	NA	NA	NA
T-2	12/10/1999	NA	NA	NA	NA	NA	NA	NA	NA	NA	Dry	NA	NA	NA	NA
T-2	02/11/2000	NA	NA	NA	NA	NA	NA	NA	NA	NA	Dry	NA	NA	NA	NA
T-2	05/04/2000	NA	NA	NA	NA	NA	NA	NA	NA	NA	Dry	NA	NA	NA	NA
T-2	08/31/2000	NA	NA	NA	NA	NA	NA	NA	NA	NA	Dry	NA	NA	NA	NA
T-2	11/30/2000	NA	NA	NA	NA	NA	NA	NA	NA	NA	7.50	NA	NA	NA	NA
T-2	02/13/2001	NA	NA	NA	NA	NA	NA	NA	NA	NA	Dry	NA	NA	NA	NA
T-2	05/29/2001	NA	NA	NA	NA	NA	NA	NA	NA	NA	Dry	NA	NA	NA	NA
T-2	07/30/2001	NA	NA	NA	NA	NA	NA	NA	NA	NA	Dry	NA	NA	NA	NA

WELL CONCENTRATIONS
Shell-branded Service Station
6039 College Avenue
Oakland, CA

Well ID	Date	TPPH (ug/L)	TEPH (ug/L)	B (ug/L)	T (ug/L)	E (ug/L)	X (ug/L)	MTBE 8020 (ug/L)	MTBE 8260 (ug/L)	TOC (MSL)	Depth to Water (ft)	Depth to SPH (ft)	GW Elevation (MSL)	SPH Thickness (ft)	DO (ppm)
T-2	12/12/2001	NA	NA	NA	NA	NA	NA	NA	NA	NA	Dry	NA	NA	NA	NA
T-2	01/31/2002	NA	NA	NA	NA	NA	NA	NA	NA	NA	Dry	NA	NA	NA	NA
T-2	05/22/2002 d	NA	NA	NA	NA	NA	NA	NA	NA	198.47	NA	NA	NA	NA	NA

Abbreviations:

TPPH = Total petroleum hydrocarbons as gasoline by EPA Method 8260B; prior to May 29, 2001, analyzed by EPA Method 8015.

TEPH = Total petroleum hydrocarbons as diesel by modified EPA Method 8015.

BTEX = Benzene, toluene, ethylbenzene, xylenes by EPA Method 8260B; prior to May 29, 2001, analyzed by EPA Method 8020.

MTBE = Methyl-tertiary-butyl ether

TOC = Top of Casing Elevation

SPH = Separate-Phase Hydrocarbons

GW = Groundwater

DO = Dissolved Oxygen

ug/L = Parts per billion

ppm = Parts per million

MSL = Mean sea level

ft = Feet

<n = Below detection limit

NA = Not applicable

ND = Not detected at or above the minimum quantitation limits.

WELL CONCENTRATIONS
Shell-branded Service Station
6039 College Avenue
Oakland, CA

Well ID	Date	TPPH (ug/L)	TEPH (ug/L)	B (ug/L)	T (ug/L)	E (ug/L)	X (ug/L)	MTBE 8020 (ug/L)	MTBE 8260 (ug/L)	TOC (MSL)	Depth to Water (ft)	Depth to SPH (ft)	GW Elevation (MSL)	SPH Thickness (ft)	DO (ppm)
---------	------	----------------	----------------	-------------	-------------	-------------	-------------	------------------------	------------------------	--------------	---------------------------	-------------------------	--------------------------	--------------------------	-------------

Notes:

a = Chromatogram patterns indicate an unidentified hydrocarbon/Hydrocarbon does not match pattern of laboratory's standard.

b = Sample was analyzed outside the EPA recommended holding time.

c = DO Readings not taken this event.

d = Survey date only.

Site surveyed May 22, 2002, by Virgil Chavez Land Surveying of Vallejo, California.

When separate-phase hydrocarbons are present, ground water elevation is adjusted using the relation:

Corrected ground water elevation = Top-of-casing elevation - depth to water + (0.8 x hydrocarbon thickness).

Blaine Tech Services, Inc.

September 10, 2003

1680 Rogers Avenue
San Jose, CA 95112-1105
Attn.: Leon Gearhart
Project#: 030827-MD1
Project: 98995745
Site: 6039 College Avenue, Oakland

Dear Mr. Gearhart,

Attached is our report for your samples received on 08/27/2003 15:07
This report has been reviewed and approved for release. Reproduction of this report
is permitted only in its entirety.

Please note that any unused portion of the samples will be discarded after
10/11/2003 unless you have requested otherwise.

We appreciate the opportunity to be of service to you. If you have any questions,
please call me at (925) 484-1919.

You can also contact me via email. My email address is: tgranicher@stl-inc.com

Sincerely,



Tod Granicher
Project Manager

Gas/BTEX Fuel Oxygenates by 8260B (C6-C12)

Blaine Tech Services, Inc.

Attn.: Leon Gearhart

1680 Rogers Avenue
San Jose, CA 95112-1105
Phone: (408) 573-0555 Fax: (408) 573-7771Project: 030827-MD1
98995745

Received: 08/27/2003 15:07

Site: 6039 College Avenue, Oakland

Samples Reported

Sample Name	Date Sampled	Matrix	Lab #
MW-3	08/27/2003 10:55	Water	1
MW-4	08/27/2003 11:25	Water	2
MW-5	08/27/2003 10:30	Water	3
MW-6	08/27/2003 10:05	Water	4

Severn Trent Laboratories, Inc.

STL San Francisco * 1220 Quarry Lane, Pleasanton, CA 94566

Tel 925 484 1919 Fax 925 484 1096 * www.stl-inc.com * CA DHS ELAP# 2496

09/10/2003 16:03

Gas/BTEX Fuel Oxygenates by 8260B (C6-C12)

Blaine Tech Services, Inc.

Attn.: Leon Gearhart

1680 Rogers Avenue

San Jose, CA 95112-1105

Phone: (408) 573-0555 Fax: (408) 573-7771

Project: 030827-MD1
98995745

Received: 08/27/2003 15:07

Site: 6039 College Avenue, Oakland

Prep(s): 5030B	Test(s): 8260FAB
Sample ID: MW-3	Lab ID: 2003-08-0846 - 1
Sampled: 08/27/2003 10:55	Extracted: 9/4/2003 11:37
Matrix: Water	QC Batch#: 2003/09/04-01.68
Analysis Flag: o (See Legend and Note Section)	

Compound	Conc.	RL	Unit	Dilution	Analyzed	Flag
Gasoline	700	500	ug/L	10.00	09/04/2003 11:37	g
Benzene	100	5.0	ug/L	10.00	09/04/2003 11:37	
Toluene	ND	5.0	ug/L	10.00	09/04/2003 11:37	
Ethylbenzene	20	5.0	ug/L	10.00	09/04/2003 11:37	
Total xylenes	ND	10	ug/L	10.00	09/04/2003 11:37	
tert-Butyl alcohol (TBA)	460	50	ug/L	10.00	09/04/2003 11:37	
Methyl tert-butyl ether (MTBE)	810	5.0	ug/L	10.00	09/04/2003 11:37	
Surrogate(s)						
1,2-Dichloroethane-d4	113.0	76-130	%	10.00	09/04/2003 11:37	
Toluene-d8	104.4	78-115	%	10.00	09/04/2003 11:37	

Gas/BTEX Fuel Oxygenates by 8260B (C6-C12)

Blaine Tech Services, Inc.

Attn.: Leon Gearhart

1680 Rogers Avenue
San Jose, CA 95112-1105
Phone: (408) 573-0555 Fax: (408) 573-7771

Project: 030827-MD1
98995745

Received: 08/27/2003 15:07

Site: 6039 College Avenue, Oakland

Prep(s):	5030B	Test(s):	8260FAB
Sample ID:	MW-4	Lab ID:	2003-08-0846 - 2
Sampled:	08/27/2003 11:25	Extracted:	9/4/2003 11:58
Matrix:	Water	QC Batch#:	2003/09/04-01-68
Analysis Flag: 0 (See Legend and Note Section)			

Compound	Conc.	RL	Unit	Dilution	Analyzed	Flag
Gasoline	1500	1000	ug/L	20.00	09/04/2003 11:58	
Benzene	220	10	ug/L	20.00	09/04/2003 11:58	
Toluene	ND	10	ug/L	20.00	09/04/2003 11:58	
Ethylbenzene	31	10	ug/L	20.00	09/04/2003 11:58	
Total xylenes	ND	20	ug/L	20.00	09/04/2003 11:58	
tert-Butyl alcohol (TBA)	380	100	ug/L	20.00	09/04/2003 11:58	
Methyl tert-butyl ether (MTBE)	1100	10	ug/L	20.00	09/04/2003 11:58	
Surrogate(s)						
1,2-Dichloroethane-d4	108.7	76-130	%	20.00	09/04/2003 11:58	
Toluene-d8	103.6	78-115	%	20.00	09/04/2003 11:58	

Gas/BTEX Fuel Oxygenates by 8260B (C6-C12)

Blaine Tech Services, Inc.

Attn.: Leon Gearhart

1680 Rogers Avenue

San Jose, CA 95112-1105

Phone: (408) 573-0555 Fax: (408) 573-7771

Project: 030827-MD1

98995745

Received: 08/27/2003 15:07

Site: 6039 College Avenue, Oakland

Prep(s):	5030B	Test(s):	8260FAB
Sample ID:	MW-5	Lab ID:	2003-08-0846 - 3
Sampled:	08/27/2003 10:30	Extracted:	9/4/2003 12:18
Matrix:	Water	QC Batch#:	2003/09/04-01.68

Compound	Conc.	RL	Unit	Dilution	Analyzed	Flag
Gasoline	ND	50	ug/L	1.00	09/04/2003 12:18	
Benzene	ND	0.50	ug/L	1.00	09/04/2003 12:18	
Toluene	ND	0.50	ug/L	1.00	09/04/2003 12:18	
Ethylbenzene	ND	0.50	ug/L	1.00	09/04/2003 12:18	
Total xylenes	ND	1.0	ug/L	1.00	09/04/2003 12:18	
tert-Butyl alcohol (TBA)	180	5.0	ug/L	1.00	09/04/2003 12:18	
Methyl tert-butyl ether (MTBE)	19	0.50	ug/L	1.00	09/04/2003 12:18	
Surrogate(s)						
1,2-Dichloroethane-d4	106.5	76-130	%	1.00	09/04/2003 12:18	
Toluene-d8	104.1	78-115	%	1.00	09/04/2003 12:18	

Gas/BTEX Fuel Oxygenates by 8260B (C6-C12)

Blaine Tech Services, Inc.

Attn.: Leon Gearhart

1680 Rogers Avenue
San Jose, CA 95112-1105
Phone: (408) 573-0555 Fax: (408) 573-7771

Project: 030827-MD1
98995745

Received: 08/27/2003 15:07

Site: 6039 College Avenue, Oakland

Prep(s): 5030B	Test(s): 8260FAB
Sample ID: MW-6	Lab ID: 2003-08-0846 - 4
Sampled: 08/27/2003 10:05	Extracted: 9/5/2003 19:49
Matrix: Water	QC Batch#: 2003/09/05-2A.66
Analysis Flag: o (See Legend and Note Section)	

Compound	Conc.	RL	Unit	Dilution	Analyzed	Flag
Gasoline	130	130	ug/L	2.50	09/05/2003 19:49	
Benzene	ND	1.3	ug/L	2.50	09/05/2003 19:49	
Toluene	ND	1.3	ug/L	2.50	09/05/2003 19:49	
Ethylbenzene	ND	1.3	ug/L	2.50	09/05/2003 19:49	
Total xylenes	ND	2.5	ug/L	2.50	09/05/2003 19:49	
tert-Butyl alcohol (TBA)	880	13	ug/L	2.50	09/05/2003 19:49	
Methyl tert-butyl ether (MTBE)	28	1.3	ug/L	2.50	09/05/2003 19:49	
Surrogate(s)						
1,2-Dichloroethane-d4	109.2	76-130	%	2.50	09/05/2003 19:49	
Toluene-d8	99.7	78-115	%	2.50	09/05/2003 19:49	

Gas/BTEX Fuel Oxygenates by 8260B (C6-C12)

Blaine Tech Services, Inc.

Attn.: Leon Gearhart

1680 Rogers Avenue
San Jose, CA 95112-1105
Phone: (408) 573-0555 Fax: (408) 573-7771

Project: 030827-MD1
98995745

Received: 08/27/2003 15:07

Site: 6039 College Avenue, Oakland

Batch QC Report		
Prep(s): 5030B		Test(s): 8260FAB
Method Blank	Water	QC Batch # 2003/09/05-2A.66
MB: 2003/09/05-2A.66-051		Date Extracted: 09/05/2003 18:38

Compound	Conc.	RL	Unit	Analyzed	Flag
Gasoline	ND	50	ug/L	09/05/2003 18:38	
Benzene	ND	0.5	ug/L	09/05/2003 18:38	
Toluene	ND	0.5	ug/L	09/05/2003 18:38	
Ethylbenzene	ND	0.5	ug/L	09/05/2003 18:38	
Total xylenes	ND	1.0	ug/L	09/05/2003 18:38	
tert-Butyl alcohol (TBA)	ND	5.0	ug/L	09/05/2003 18:38	
Methyl tert-butyl ether (MTBE)	ND	0.5	ug/L	09/05/2003 18:38	
Surrogates(s)					
1,2-Dichloroethane-d4	94.0	76-130	%	09/05/2003 18:38	
Toluene-d8	107.8	78-115	%	09/05/2003 18:38	

Gas/BTEX Fuel Oxygenates by 8260B (C6-C12)

Blaine Tech Services, Inc.

Attn.: Leon Gearhart

1680 Rogers Avenue

San Jose, CA 95112-1105

Phone: (408) 573-0555 Fax: (408) 573-7771

Project: 030827-MD1

98995745

Received: 08/27/2003 15:07

Site: 6039 College Avenue, Oakland

Batch QC Report										
Prep(s): 5030B						Test(s): 8260FAB				
Laboratory Control Spike				Water			QC Batch # 2003/09/04-01.68			
LCS	2003/09/04-01.68-032			Extracted: 09/04/2003			Analyzed: 09/04/2003-09:32			
LCSD	2003/09/04-01.68-054			Extracted: 09/04/2003			Analyzed: 09/04/2003-09:54			
Compound	Conc. ug/L		Exp.Conc.	Recovery %		RPD	Ctrl.Limits %		Flags	
	LCS	LCSD		LCS	LCSD		%	Rec.	RPD	LCS
Benzene	24.7	23.8	25.0	98.8	95.2	3.7	69-129	20		
Toluene	25.8	24.7	25.0	103.2	98.8	4.4	70-130	20		
Methyl tert-butyl ether (MTBE)	24.8	24.7	25.0	99.2	98.8	0.4	65-165	20		
Surrogates(s)										
1,2-Dichloroethane-d4	531	513	500	106.2	102.6		76-114			
Toluene-d8	535	506	500	107.0	101.2		88-110			

Gas/BTEX Fuel Oxygenates by 8260B (C6-C12)

Blaine Tech Services, Inc.

Attn.: Leon Gearhart

1680 Rogers Avenue
San Jose, CA 95112-1105
Phone: (408) 573-0555 Fax: (408) 573-7771

Project: 030827-MD1
98995745

Received: 08/27/2003 15:07

Site: 6039 College Avenue, Oakland

Batch QC Report										
Prep(s): 5030B					Test(s): 8260FAB					
Laboratory Control Spike			Water			QC Batch # 2003/09/05-2A.66				
LCS	2003/09/05-2A.66-050		Extracted: 09/05/2003			Analyzed: 09/05/2003 17:50				
LCSD	2003/09/05-2A.66-014		Extracted: 09/05/2003			Analyzed: 09/05/2003 18:14				
Compound	Conc. ug/L		Exp.Conc.	Recovery %		RPD %	Ctrl.Limits %		Flags	
	LCS	LCSD		LCS	LCSD		Rec.	RPD	LCS	LCSD
Benzene	21.0	19.6	25	84.0	78.4	6.9	69-129	20		
Toluene	24.1	22.3	25	96.4	89.2	7.8	70-130	20		
Methyl tert-butyl ether (MTBE)	23.5	20.9	25	94.0	83.6	11.7	65-165	20		
Surrogates(s)										
1,2-Dichloroethane-d4	507	481	500	101.4	96.2		76-130			
Toluene-d8	541	518	500	108.2	103.6		78-115			

Gas/BTEX Fuel Oxygenates by 8260B (C6-C12)

Blaine Tech Services, Inc.

Attn.: Leon Gearhart

1680 Rogers Avenue

San Jose, CA 95112-1105

Phone: (408) 573-0555 Fax: (408) 573-7771

Project: 030827-MD1

98995745

Received: 08/27/2003 15:07

Site: 6039 College Avenue, Oakland

Legend and Notes

Analysis Flag

o

Reporting limits were raised due to high level of analyte present in the sample.

Result Flag

g

Hydrocarbon reported in the gasoline range does not match our gasoline standard.

SHELL Chain Of Custody Record

7757+

Lab Identification (if necessary):

Address:

City, State, Zip:

Shell Project Manager to be invoiced:

- SCIENCE & ENGINEERING
- TECHNICAL SERVICES
- CRMT HOUSTON

Karen Petryna

2003.08.0846

INCIDENT NUMBER (S&E ONLY)

9 8 9 9 5 7 4 5

SAP or CRMT NUMBER (TS/CRMT)

DATE: 8/27/07

PAGE: 1 of 1

Supplier Company Blaine Tech Services	LCO CODE BTSS	SITE ADDRESS (Street and City) 6039 College Avenue, Oakland	GLOBAL ID NO. T0600101272
ADDRESS 1680 Rogers Avenue, San Jose, CA 95112		BOP DELIVERABLE TO (Responsible Party or Company) Annal Kreml	PHONE NO. (510) 420-3335
CONSULTANT PROJECT NO. 03027-MD		E-MAIL ShellOaklandEDF@cambrisa-env.com	
CONTACT PERSON Leon Gearhart		LAB USE ONLY	
TELEPHONE 408-573-0555	FAX 408-573-7771	E-MAIL lgearhart@blainetech.com	

TURNAROUND TIME (BUSINESS DAYS) <input checked="" type="checkbox"/> 10 DAYS <input type="checkbox"/> 5 DAYS <input type="checkbox"/> 72 HOURS <input type="checkbox"/> 48 HOURS <input type="checkbox"/> 24 HOURS <input type="checkbox"/> LESS THAN 24 HOURS	REQUESTED ANALYSIS
<input type="checkbox"/> LA - RWQCB REPORT FORMAT <input type="checkbox"/> UST AGENCY	FIELD NOTES: Container/Preservative or PID Readings or Laboratory Notes <div style="font-size: 1.5em; text-align: center;">5.7°C</div> TEMPERATURE ON RECEIPT C°
SPECIAL INSTRUCTIONS OR NOTES: CHECK BOX IF EDD IS NOT NEEDED <input type="checkbox"/>	

LAB USE ONLY	Field Sample Identification	SAMPLING		MATRIX	NO. OF CONT.	TPH - Gas, Purgeable	BTEX	MTBE (S021B - 5ppb RL)	MTBE (S250B - 0.5ppb RL)	Oxygenates (S) by (S260B)	Ethanol (S260B)	Methanol	1,2-DCA (S260B)	EDS (S250B)	TPH	EPA 820	Oil & Grease (S220B/F)	TPH - Diesel, Extractable (S015m)
		DATE	TIME															
	MW-3	8/27/07	10:55	W	3	✓	✓	✓							✓			
	MW-4		11:25	L	3	✓	✓	✓							✓			
	MW-5		10:30	L	3	✓	✓	✓							✓			
	MW-6		10:05	L	3	✓	✓	✓							✓			

Released by (Signature) 	Received by (Signature) 	Date: 8/27/07	Time: 1507
Released by (Signature) 	Received by (Signature) 	Date: 8/27/07	Time: 1754

WELL GAUGING DATA

Project # 9 030827-MD1 Date 8/27/03 Client 98995745

Site 6039 College Ave. Oakland

Well ID	Well Size (in.)	Sheen / Odor	Depth to Immiscible Liquid (ft.)	Thickness of Immiscible Liquid (ft.)	Volume of Immiscibles Removed (ml)	Depth to water (ft.)	Depth to well bottom (ft.)	Survey Point: TOB TOB
MW-1	4					17.32	24.57	↓
MW-2	4					16.46	24.28	
MW-3	4					15.14	24.68	
MW-4	4	* Strong odor				16.14	24.46	
MW-5	4	* Strong odor				14.32	28.58	
MW-6	2					13.83	24.14	
* gauged with stinger in well								

SHELL WELL MONITORING DATA SHEET

BTS #: 030827-MD1	Site: 9899 5745
Sampler: John De Jong	Date: 8/27/03
Well I.D.: MW-4	Well Diameter: 2 3 <u>4</u> 6 8
Total Well Depth (TD): 24.46	Depth to Water (DTW): 16.14
Depth to Free Product:	Thickness of Free Product (feet):
Referenced to: <u>PVC</u> Grade	D.O. Meter (if req'd): YSI HACH
DTW with 80% Recharge [(Height of Water Column x 0.20) + DTW]: 17.80	

Purge Method: Bailer Waterwa Sampling Method: Bailer
 Disposable Bailer Peristaltic Disposable Bailer
 Positive Air Displacement Extraction Pump Extraction Port
Electric Submersible Other _____ Dedicated Tubing

5.4 (Gals.) X 3 = 16.2 Gals.
 Case Volume Specified Volumes Calculated Volume

Well Diameter	Multiplier	Well Diameter	Multiplier
1"	0.04	4"	0.65
2"	0.16	6"	1.47
3"	0.37	Other	radius ² * 0.163

Time	Temp (°F)	pH	Cond. (mS or <u>µS</u>)	Turbidity (NTUs)	Gals. Removed	Observations
1113	65.9	6.8	499	16.1	5.5	strong gas odor, clear
1114	65.2	6.7	535	24.7	11	
1116	65.1	6.7	499	25.9	6 16.5	

Did well dewater? Yes No Gallons actually evacuated: 16.5

Sampling Date: 8/27/03 Sampling Time: 1125 Depth to Water: 17.52

Sample I.D.: MW-4 Laboratory: STL Other _____

Analyzed for: TPH-G BTEX MTBE TPH-D Other: TBA

EB I.D. (if applicable): @ _____ Duplicate I.D. (if applicable):

Analyzed for: TPH-G BTEX MTBE TPH-D Other:

D.O. (if req'd):	Pre-purge:	mg/L	Post-purge:	mg/L
O.R.P. (if req'd):	Pre-purge:	mV	Post-purge:	mV

SHELL WELL MONITORING DATA SHEET

BTS #: 030827-MDI	Site: 9899 5745
Sampler: John De Jong	Date: 8/27/03
Well I.D.: MW-5	Well Diameter: 2 3 <u>4</u> 6 8
Total Well Depth (TD): 28.58	Depth to Water (DTW): 14.32
Depth to Free Product:	Thickness of Free Product (feet):
Referenced to: <u>PVC</u> Grade	D.O. Meter (if req'd): YSI HACH
DTW with 80% Recharge [(Height of Water Column x 0.20) + DTW]: 17.17	

Purge Method: Bailer	Waterra	Sampling Method: <u>Bailer</u>
Disposible Bailer	Peristaltic	Disposible Bailer
Positive Air Displacement	Extraction Pump	Extraction Port
<u>Electric Submersible</u>	Other _____	Dedicated Tubing
		Other: _____

9.3 (Gals.) X 3 = 27.9 Gals.
 Case Volume Specified Volumes Calculated Volume

Well Diameter	Multiplier	Well Diameter	Multiplier
1"	0.04	4"	0.65
2"	0.16	6"	1.47
3"	0.37	Other	radius ² * 0.163

Time	Temp (°F)	pH	Cond. (mS or <u>µS</u>)	Turbidity (NTUs)	Gals. Removed	Observations
1017	66.2	6.5	518	> 200	9.5	cloudy, tan, slight odor
1019	65.8	6.4	485	7200	19	
1021	65.5	6.4	477	7200	28	

Did well dewater? Yes No Gallons actually evacuated: 28

Sampling Date: 8/27/03 Sampling Time: 10:30 Depth to Water: 15.17

Sample I.D.: MW-5 Laboratory: STL Other _____

Analyzed for: TPH-G BTEX MTBE TPH-D Other: TBA

EB I.D. (if applicable): _____ @ _____ Time Duplicate I.D. (if applicable): _____

Analyzed for: TPH-G BTEX MTBE TPH-D Other: _____

D.O. (if req'd):	Pre-purge:	mg/L	Post-purge:	mg/L
O.R.P. (if req'd):	Pre-purge:	mV	Post-purge:	mV

SHELL WELL MONITORING DATA SHEET

BTS #: 030827-MD1	Site: 98995745
Sampler: John De Jong	Date: 8/27/03
Well I.D.: MW-6	Well Diameter: <u>2</u> 3 4 6 8
Total Well Depth (TD): 24.14	Depth to Water (DTW): 13.83
Depth to Free Product:	Thickness of Free Product (feet):
Referenced to: <u>PVC</u> Grade	D.O. Meter (if req'd): YSI HACH
DTW with 80% Recharge [(Height of Water Column x 0.20) + DTW]: 15.89	

Purge Method: Bailer Water: _____ Sampling Method: Bailer
 Disposable Bailer Peristaltic Disposable Bailer
 Positive Air Displacement Extraction Pump Extraction Port
 Electric Submersible Other _____ Dedicated Tubing

Other: _____

1.7 (Gals.) X 3 = 5.1 Gals.
 1 Case Volume Specified Volumes Calculated Volume

Well Diameter	Multiplier	Well Diameter	Multiplier
1"	0.04	4"	0.65
2"	0.16	6"	1.47
3"	0.37	Other	radius ² * 0.163

Time	Temp (°F)	pH	Cond. (mS or <u>µS</u>)	Turbidity (NTUs)	Gals. Removed	Observations
9:49	67.0	6.2	795	>200	1.7	cloudy, slight gas on top
9:52	66.9	6.2	713	7200	3.4	
9:55	66.7	6.2	735	7200	5.1	

Did well dewater? Yes No Gallons actually evacuated: 5.1

Sampling Date: 8/27/03 Sampling Time: 1005 Depth to Water: 13.92

Sample I.D.: MW-6 Laboratory: STL Other _____

Analyzed for: TPH-G BTEX MTBE TPH-D Other: TBA

EB I.D. (if applicable): _____ @ _____ Time Duplicate I.D. (if applicable): _____

Analyzed for: TPH-G BTEX MTBE TPH-D Other: _____

D.O. (if req'd):	Pre-purge:	mg/L	Post-purge:	mg/L
O.R.P. (if req'd):	Pre-purge:	mV	Post-purge:	mV