

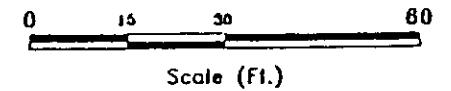


EXPLANATION

- Groundwater elevation (28 May 1997)
- 23.74 Groundwater Monitoring Well HMW-3 (3927 E. 14th St.)
- MW-1 Groundwater Monitoring Well (1234 40th Ave.)
- Groundwater elevation contours, 28 May 1997
Kier & Wright elevation surveyed 22 August 1996

Notes:

1. Base Map developed from survey map provided by Kier & Wright

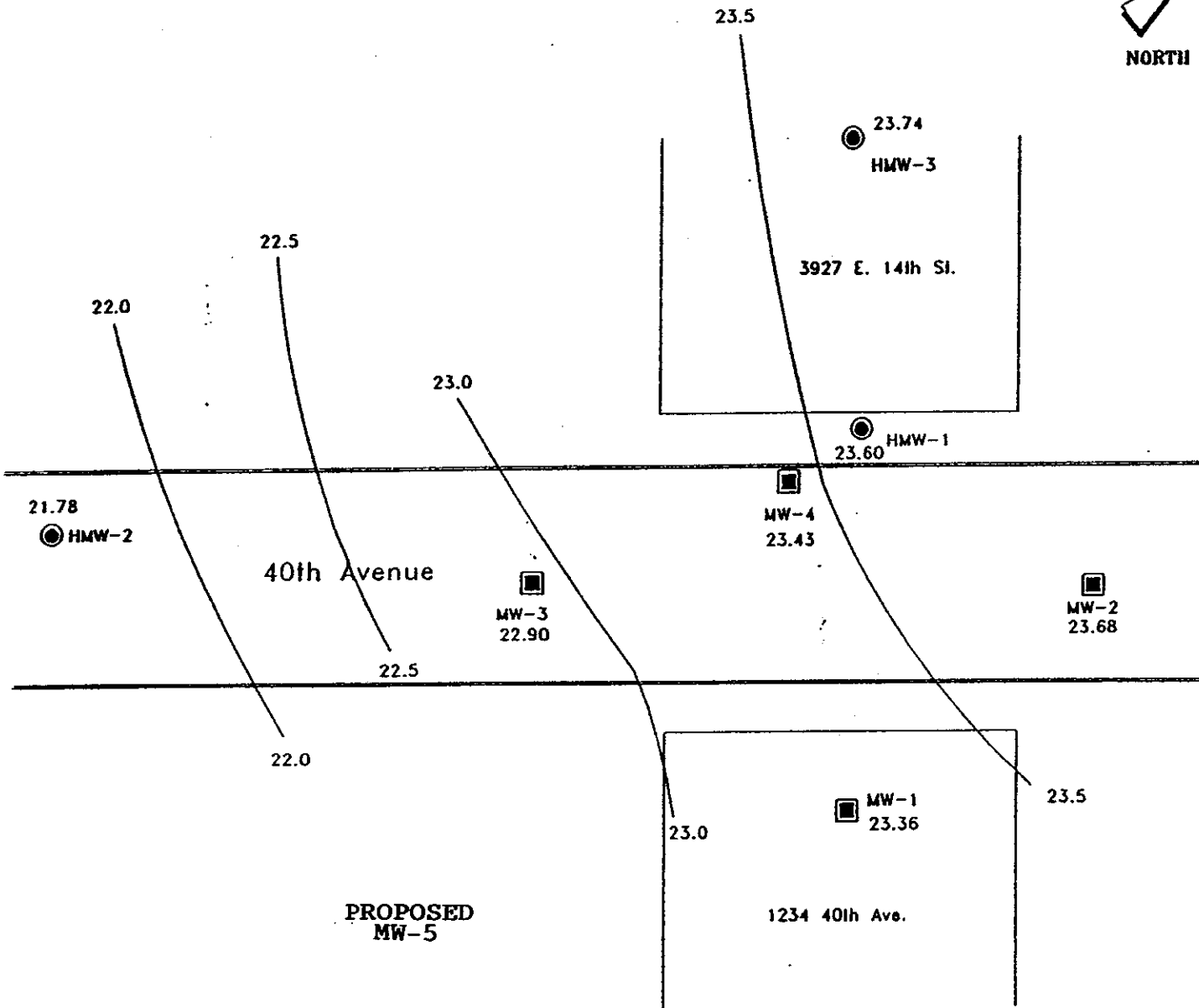


VATC ASSOCIATES INC.
ENVIRONMENTAL, GEOTECHNICAL AND MINING PROFESSIONALS

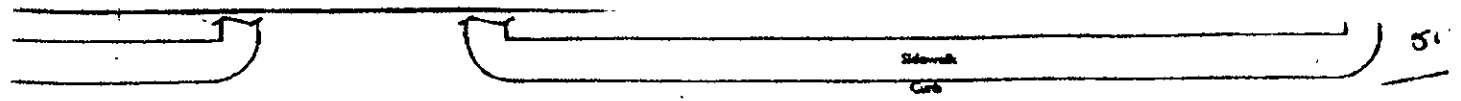
GROUNDWATER FLOW MAP
3927 E. 14th Street
Oakland, California

Project No. 61137.0002

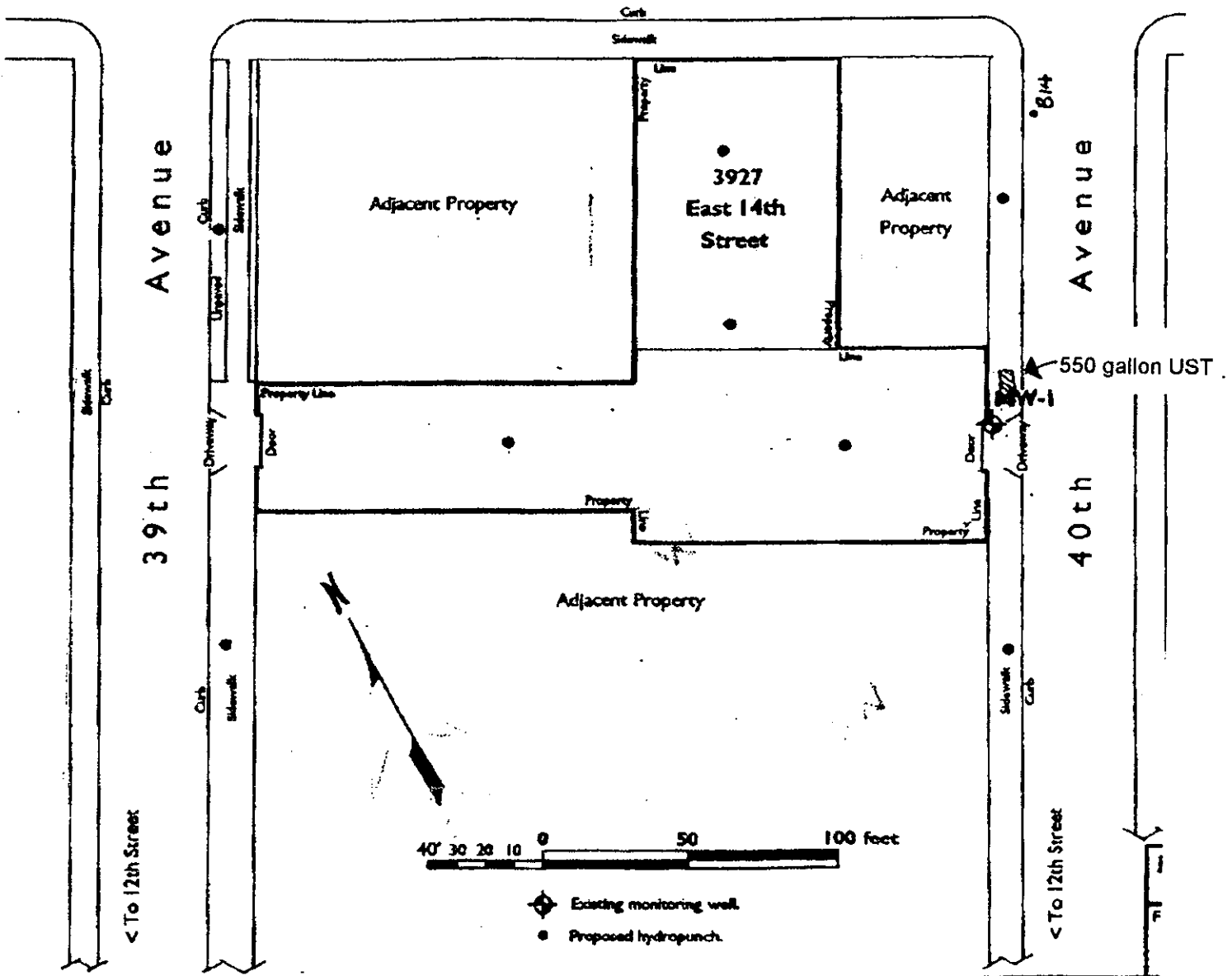
Figure 2



MAP "B"

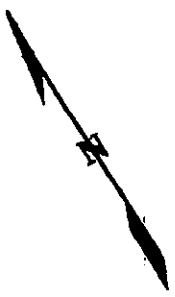


East 14th Street



HK2, INC./ SEMCO
 1751 Leslie Street
 San Mateo, California
 94402

Ruben Hausauer
 3927 E. 14th Street
 Oakland, California



Waste Oil UST
Excavation
Location

HMW-1
HMW-3

3927 E. 14th St.

Gasoline UST
Excavation
Location

MW-1

1234 40th Ave.

Waste Oil UST
Excavation
Location

Sidewalk

MW-2

MW-4

MW-3

40th Avenue

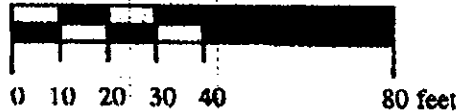
HMW-2

Sidewalk

PROPOSED WELL
HMW-4

Explanation

Approximate Scale: 1 inch = 40 feet



⊕ Groundwater Monitoring Well Location (Hausauer)
HMW-1

⊙ Groundwater Monitoring Well Location (Motor Partners)
MW-1

Map based from ATC Environmental and Gary Rogers, PH.D Environmental Consultant

ARTESIAN ENVIRONMENTAL
229 Tewksbury Avenue
Point Richmond, California 94801
Phone (510) 307-9943 Fax: (501) 232-2823

SITE MAP
Hausauer Property
3927 East 14th Street
Oakland, California

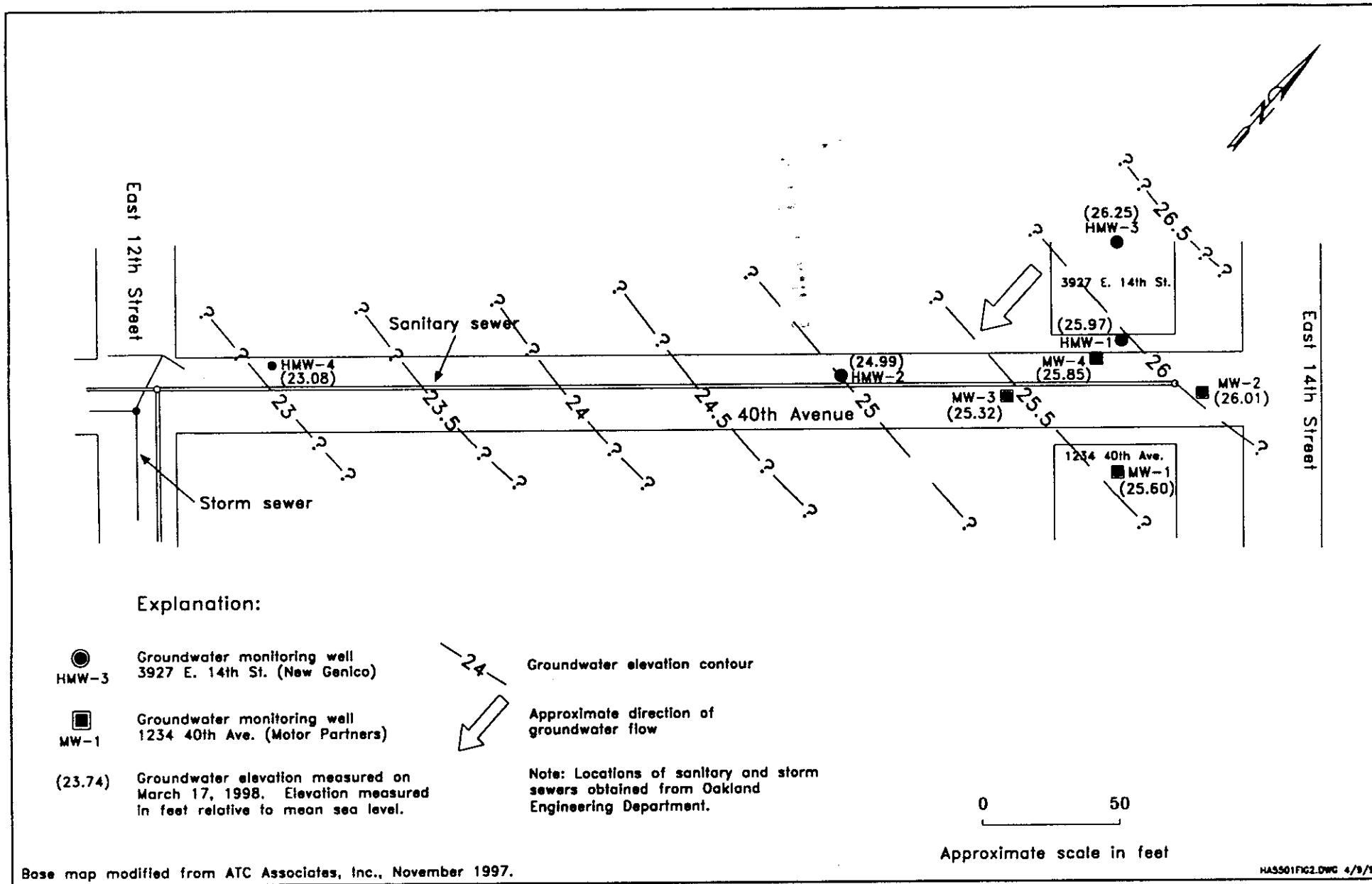
Project No.: 197-002-01

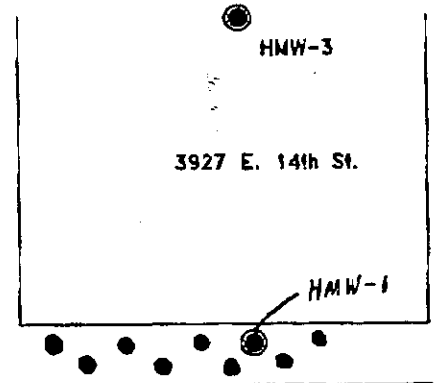
Date: 5/7/97

Prepared By: T. Fortner

Figure 2

MAP "A"





3927 E. 14th St.

HMW-3

HMW-1

HMW-4

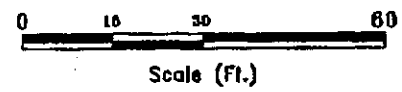
HMW-2

MW-4

40th Avenue

MW-3

MW-2



EXPLANATION

● HMW-3 Groundwater Monitoring Well (3927 E. 14th St.)

■ MW-1 Groundwater Monitoring Well (1234 40th Ave.)

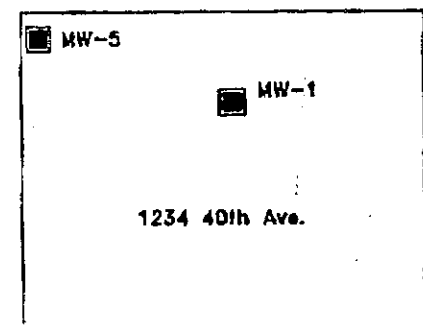
—○— Designation of sanitary sewer.

—●— Designation of storm sewer.

● Proposed Slurry Injection Point

Notes:

1. Base Map developed from survey map provided by Kler & Wright
2. Location of HMW-4 obtained from Artesian Environmental Project No.: 187-002-01 Date: 1/8/98
3. Location of MW-5 obtained from Aquatic & Environmental Applications, Project No.: 1004 Date: 3/27/98



1234 40th Ave.

MW-5

MW-1

VAIC ASSOCIATES INC.
ENVIRONMENTAL, GEOCHEMICAL AND MATERIALS PROFESSIONALS

SITE MAP
 3927 E. 14th Street
 Oakland, California

| | |
|------------------------|-----------|
| Project No. 61137.0005 | Figure 2. |
|------------------------|-----------|

< To Downtown Oakland

To San Leandro >

East 14th Street

Avenue

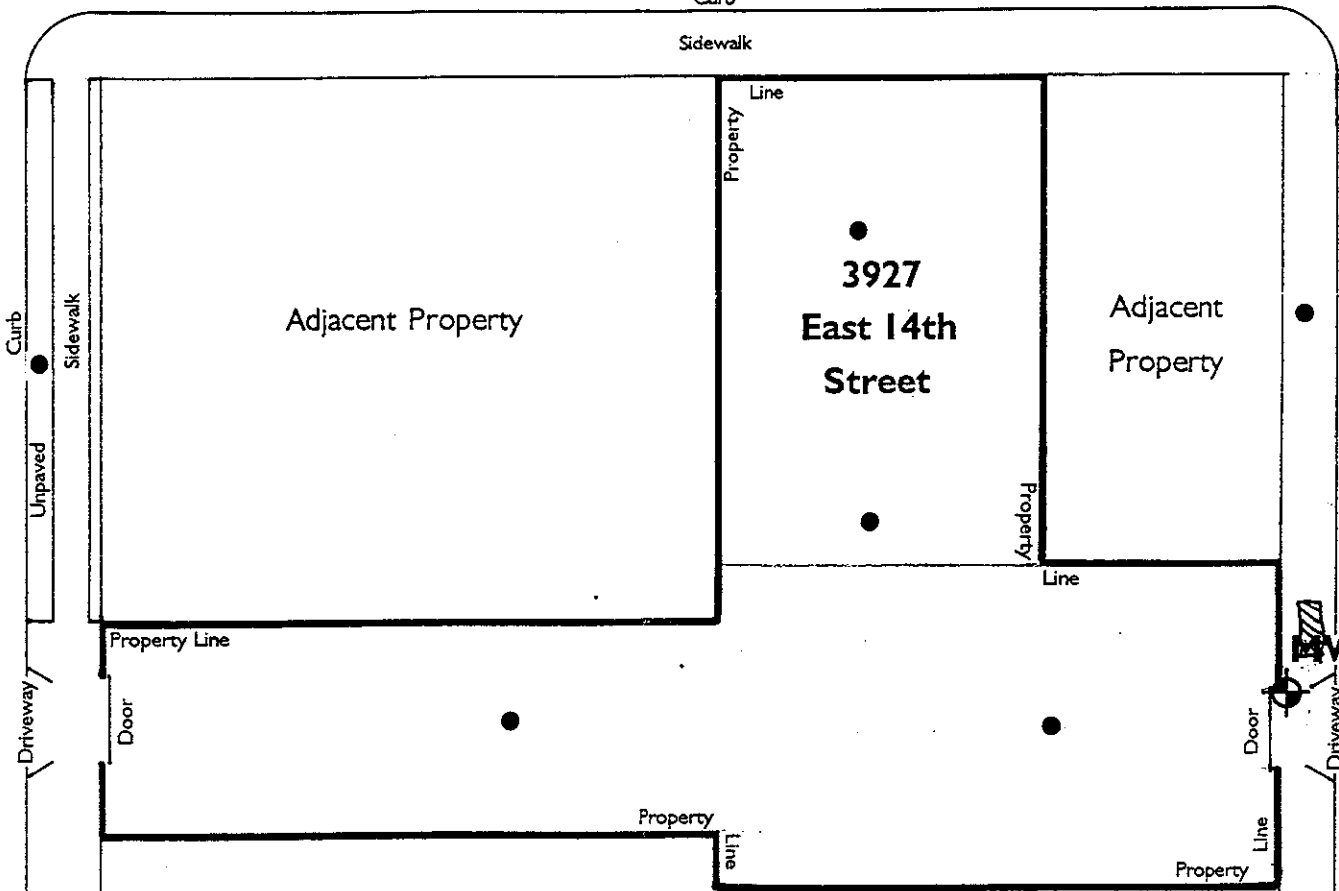
39th

< To 12th Street

Avenue

40th

< To 12th Street



- Existing monitoring well.
- Proposed hydropunch.

| | |
|--|---|
| John P. Cummings & Associates | Project #0392002.03 3927 EAST 14TH STREET, Oakland, California. |
|--|---|

Fig. 2 **SITE AREA MAP**