



ENVIRONMENTAL HEALTH SERVICES
ENVIRONMENTAL PROTECTION
1131 Harbor Bay Parkway, Suite 250
Alameda, CA 94502-6577
(510) 567-6700
FAX (510) 337-9335

July 10, 2013

**PUBLIC NOTIFICATION OF POTENTIAL
CASE CLOSURE
Unocal #6419**

**Site Location: 6401 Dublin Boulevard, Dublin
CA 94568**

**Fuel Leak Case RO0000459 and GeoTracker
Global ID T0600101443**

Summary – This fact sheet has been prepared to inform community members and other interested parties of potential case closure of a fuel leak case at the 76 service station located at the corner of Dublin Boulevard and Dougherty Road in Dublin, California. (Figure 1). The fuel leak case was opened by Alameda County Environmental Health (ACEH) in 1993 when a release of petroleum hydrocarbons was discovered during replacement of fuel and waste oil underground storage tanks (USTs) at the site. Based on data and reports submitted by the responsible parties it appears that the site qualifies for low-risk closure under the State Water Resource Control Board's (SWRCBs) Low-Threat Underground Storage Tank Case Closure Policy (Low Threat Closure Policy or Policy).

Background – The site was originally opened as a Unocal service station in 1973 and is currently owned by Pacific Convenience & Fuels and operated as 76 service station and car wash. Properties in the immediate site vicinity are used for commercial and residential purposes, including retail commercial and 233 residential units within the adjacent Tralee Village site.

Two generations of UST systems containing gasoline and waste oil have been installed at the site. The original tanks (or first generation tanks) were installed in 1973 in a common pit and consisted of one 550-gallon waste oil and two 10,000-gallon unleaded gasoline single wall steel USTs. In September 1993, the three first generation tanks and product lines were removed from the site during UST system upgrade activities. System upgrades included installation of

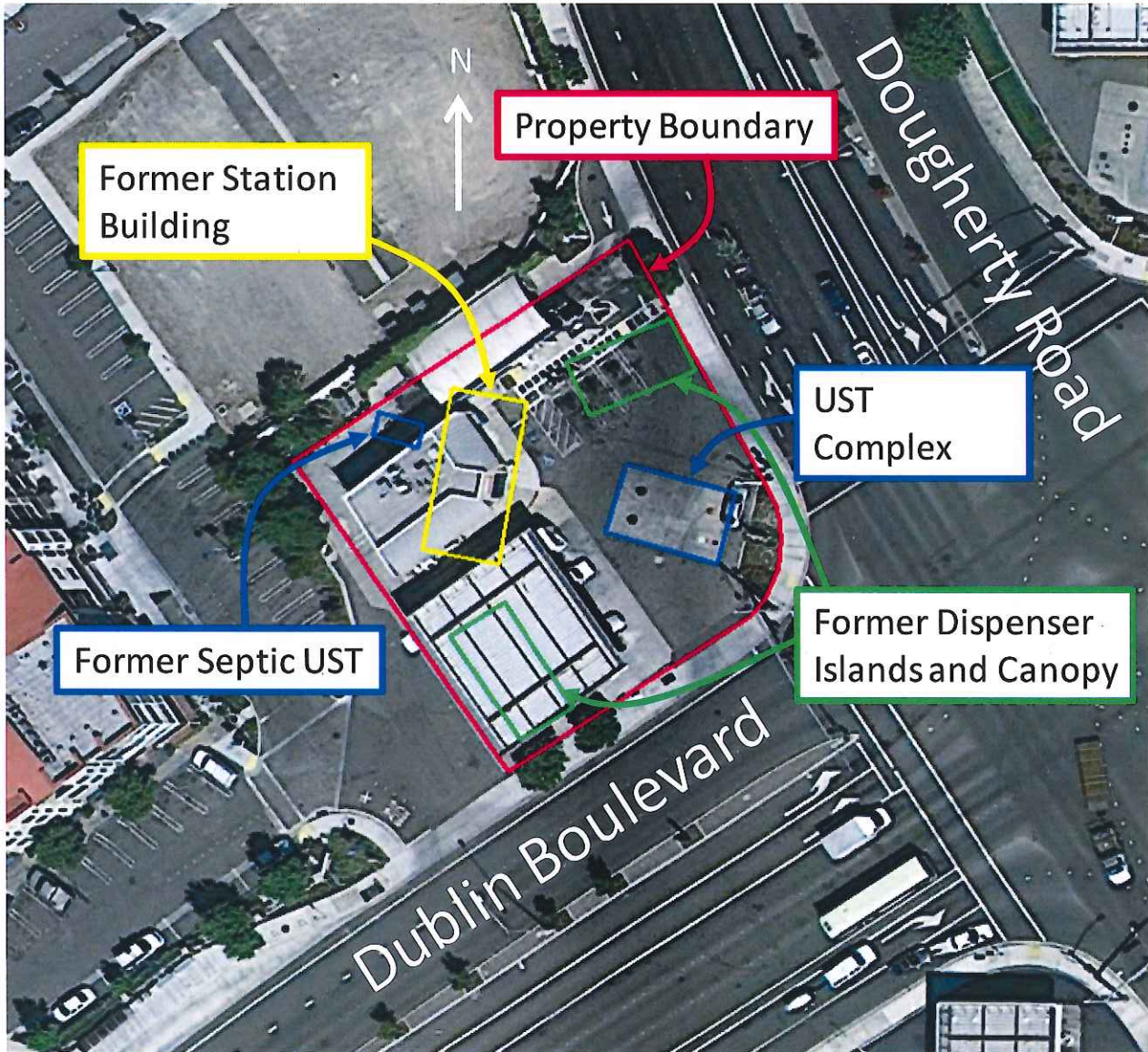
three double-walled replacement tanks or second generation tanks in the original pit (two 12,000-gallon gasoline tanks and one 550-gallon waste oil tank) and product piping. During the replacement activities a release of petroleum hydrocarbons was discovered, and fuel release case RO0000459 was opened with ACEH. In 1996, the second generation waste oil tank previously installed in 1993 was permanently removed from the site during station modifications activities including re-location of the fuel dispensers and canopy and addition of a convenience store and car wash facility. The two second generation 12,000 gallon gasoline tanks remain at the site and are located in a common pit east of the station building.

From 1993 until 2011 site investigation and cleanup activities have been conducted by the responsible parties to evaluate and remediate both onsite and off-site impacts to soil and groundwater as a result of unauthorized fuel releases at the site. ACEH has evaluated the site data presented the case files for compliance with the SWRCB's Low Threat Closure Policy, and has determined that the site meets the general and media specific criteria of the Policy. In accordance with the Policy, sites that meet the general and media-specific criteria are considered to not pose a threat to human health, safety, or the environment and are appropriate for closure pursuant to Health and Safety Code section 25296.10. Therefore, ACEH is considering potential closure of the fuel leak case RO0000459.

Next Step – The public is invited to review and comment on the proposed closure of the fuel leak case. The entire case file can be viewed via the internet on the ACEH website (<http://www.acgov.org/aceh/lop/ust.htm>) or on the State of California Water Resources Control Board GeoTracker website (<http://geotracker.swrcb.ca.gov>). Please send written comments to Dilan Roe at the address below; all comments will be forwarded to the responsible parties. **Comments received by August 16, 2013** will be considered and responded to prior to a final determination on the proposed case closure.

Additional information: Contact Dilan Roe of the Alameda County Department of Environmental Health, 1131 Harbor Bay Parkway, Alameda, CA 94502 at 510-567-6767 or by email at dilan.roe@acgov.org

Figure 1: Aerial View of Fuel Leak Case R00000459 Property (Google Earth, 2013)



All the Perks
6601 C Dublin Blvd
Dublin CA 94568

Dublin Smiles
6601 K&L Dublin Blvd
Dublin CA 94568

Fresh Millions
6599 F Dublin Blvd
Dublin CA 94568

Little Home Thai
6601 B Dublin Blvd
Dublin CA 94568

Nothing Bundt Cakes
6601 O&N Dublin Blvd
Dublin CA 94568

Tech Credit Union
6601 A Dublin Blvd
Dublin CA 94568

6484 Tralee Village Drive
Dublin CA 94568

6572 Tralee Village Drive
Dublin CA 94568

6584 Tralee Village Drive
Dublin CA 94568

6599 DUBLIN BLVD 206
Dublin CA 94568

Caps & Taps
6601 M Dublin Blvd
Dublin CA 94568

Edward Jones
6601 P Dublin Blvd
Dublin CA 94568

Hacienda Cleaners
6599 I Dublin Blvd
Dublin CA 94568

Luxor Nails
6599 A Dublin Blvd
Dublin CA 94568

Shea Homes
6601 J Dublin Blvd
Dublin CA 94568

Yanagi
6599 K&L Dublin Blvd
Dublin CA 94568

6492 Tralee Village Drive
Dublin CA 94568

6576 Tralee Village Drive
Dublin CA 94568

6599 DUBLIN BLVD 201
Dublin CA 94568

6599 DUBLIN BLVD 208
Dublin CA 94568

Cut & Beyond
6599 B Dublin Blvd
Dublin CA 94568

Extreme Pizza
6599 G Dublin Blvd
Dublin CA 94568

Life Coach
6599 N Dublin Blvd
Dublin CA 94568

Mobile Device Repair
6599 H Dublin Blvd
Dublin CA 94568

Subway
6599 J Dublin Blvd
Dublin CA 94568

Yogurt Walk
6601 I Dublin Blvd
Dublin CA 94568

6570 Tralee Village Drive
Dublin CA 94568

6580 Tralee Village Drive
Dublin CA 94568

6599 DUBLIN BLVD 204
Dublin CA 94568

6599 DUBLIN BLVD 217
Dublin CA 94568

6599 DUBLIN BLVD 219
Dublin CA 94568

6599 DUBLIN BLVD 221
Dublin CA 94568

6599 DUBLIN BLVD 223
Dublin CA 94568

6599 DUBLIN BLVD 224
Dublin CA 94568

6599 DUBLIN BLVD 226
Dublin CA 94568

6599 DUBLIN BLVD 227
Dublin CA 94568

6599 DUBLIN BLVD 228
Dublin CA 94568

6599 DUBLIN BLVD 229
Dublin CA 94568

6599 DUBLIN BLVD 231
Dublin CA 94568

6599 DUBLIN BLVD 233
Dublin CA 94568

6599 DUBLIN BLVD 235
Dublin CA 94568

6599 DUBLIN BLVD 237
Dublin CA 94568

6599 DUBLIN BLVD 239
Dublin CA 94568

6599 DUBLIN BLVD 301
Dublin CA 94568

6599 DUBLIN BLVD 303
Dublin CA 94568

6599 DUBLIN BLVD 304
Dublin CA 94568

6599 DUBLIN BLVD 305
Dublin CA 94568

6599 DUBLIN BLVD 306
Dublin CA 94568

6599 DUBLIN BLVD 307
Dublin CA 94568

6599 DUBLIN BLVD 308
Dublin CA 94568

6599 DUBLIN BLVD 309
Dublin CA 94568

6599 DUBLIN BLVD 311
Dublin CA 94568

6599 DUBLIN BLVD 313
Dublin CA 94568

6599 DUBLIN BLVD 315
Dublin CA 94568

6599 DUBLIN BLVD 317
Dublin CA 94568

6599 DUBLIN BLVD 319
Dublin CA 94568

6599 DUBLIN BLVD 321
Dublin CA 94568

6599 DUBLIN BLVD 323
Dublin CA 94568

6599 DUBLIN BLVD 324
Dublin CA 94568

6599 DUBLIN BLVD 325
Dublin CA 94568

6599 DUBLIN BLVD 326
Dublin CA 94568

6599 DUBLIN BLVD 327
Dublin CA 94568

6599 DUBLIN BLVD 328
Dublin CA 94568

6599 DUBLIN BLVD 329
Dublin CA 94568

6599 DUBLIN BLVD 331
Dublin CA 94568

6599 DUBLIN BLVD 333
Dublin CA 94568

6599 DUBLIN BLVD 335
Dublin CA 94568

6599 DUBLIN BLVD 337
Dublin CA 94568

6599 DUBLIN BLVD 339
Dublin CA 94568

6599 DUBLIN BLVD 401
Dublin CA 94568

6599 DUBLIN BLVD 403
Dublin CA 94568

6599 DUBLIN BLVD 404
Dublin CA 94568

6599 DUBLIN BLVD 405
Dublin CA 94568

6599 DUBLIN BLVD 406
Dublin CA 94568

6599 DUBLIN BLVD 407
Dublin CA 94568

6599 DUBLIN BLVD 408
Dublin CA 94568

6599 DUBLIN BLVD 409
Dublin CA 94568

6599 DUBLIN BLVD 411
Dublin CA 94568

6599 DUBLIN BLVD 413
Dublin CA 94568

6599 DUBLIN BLVD 413
Dublin CA 94568

6599 DUBLIN BLVD 415
Dublin CA 94568

6599 DUBLIN BLVD 417
Dublin CA 94568

6599 DUBLIN BLVD 419
Dublin CA 94568

6599 DUBLIN BLVD 421
Dublin CA 94568

6599 DUBLIN BLVD 423
Dublin CA 94568

6599 DUBLIN BLVD 424
Dublin CA 94568

6599 DUBLIN BLVD 425
Dublin CA 94568

6599 DUBLIN BLVD 426
Dublin CA 94568

6599 DUBLIN BLVD 427
Dublin CA 94568

6599 DUBLIN BLVD 428
Dublin CA 94568

6599 DUBLIN BLVD 429
Dublin CA 94568

6599 DUBLIN BLVD 431
Dublin CA 94568

6599 DUBLIN BLVD 433
Dublin CA 94568

6599 DUBLIN BLVD 435
Dublin CA 94568

6599 DUBLIN BLVD 437
Dublin CA 94568

6599 DUBLIN BLVD 439
Dublin CA 94568

6650 Tralee Village Drive
Dublin CA 94568

6654 Tralee Village Drive
Dublin CA 94568

6658 Tralee Village Drive
Dublin CA 94568

6666 Tralee Village Drive
Dublin CA 94568

6670 Tralee Village Drive
Dublin CA 94568

COLLEEN WINEY
ZONE 7 WATER AGENCY
100 N. CANYONS PKWY
LIVERMORE CA 94551