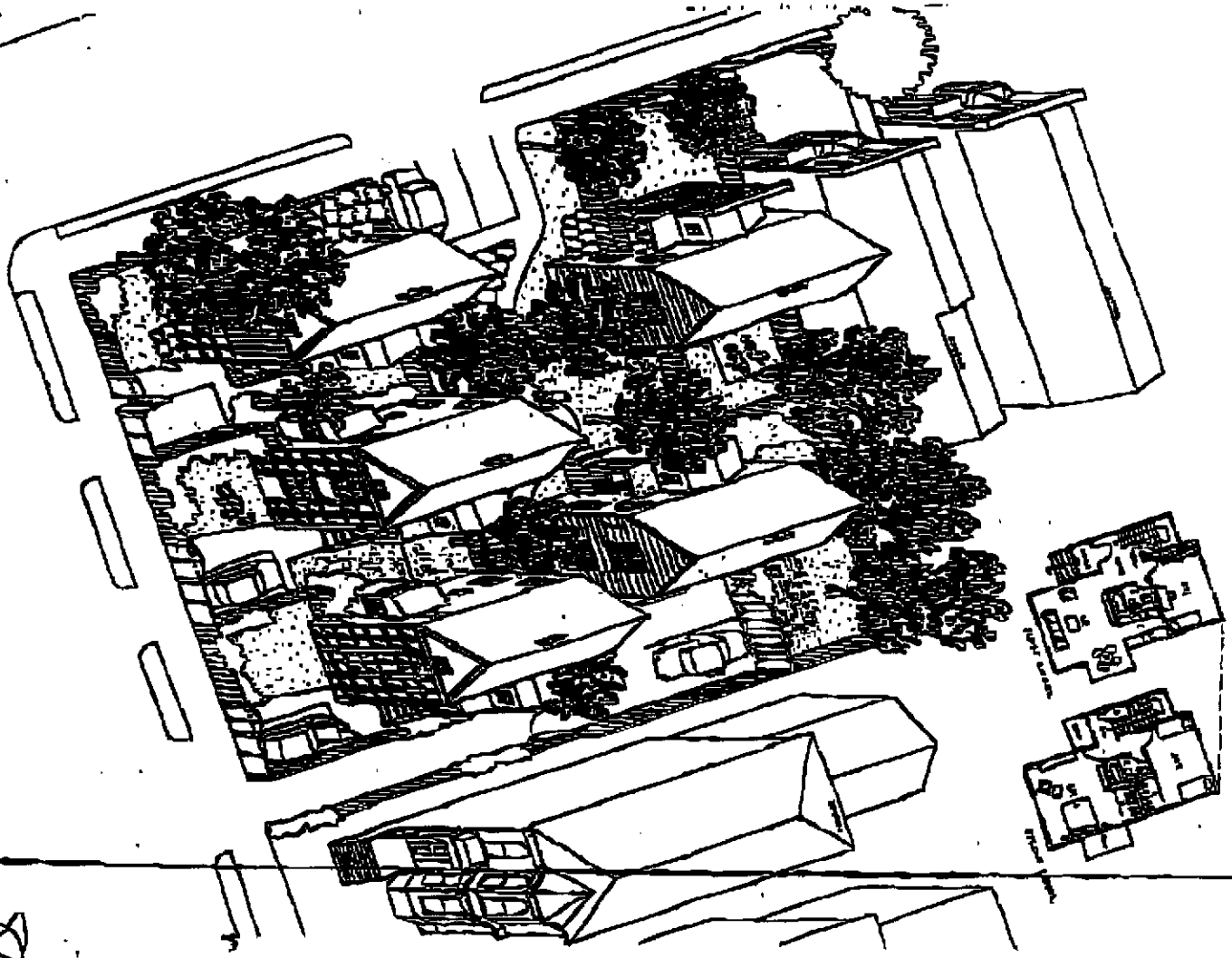
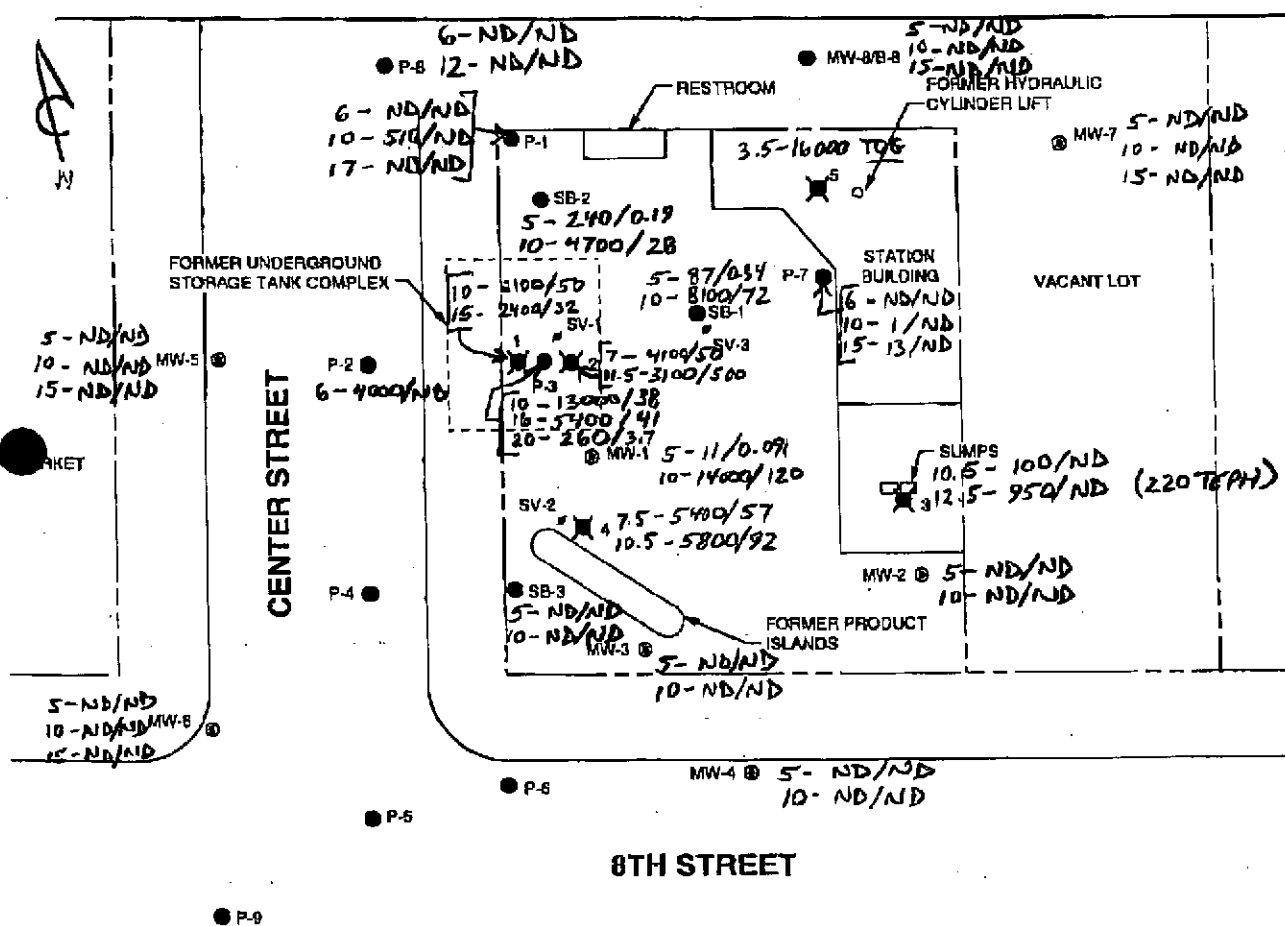


Post-it <sup>™</sup> Fax Note	7671	Date	5-2-97	# of pages	2
To	Jennifer Eberle	From	Ross Tinline		
Co./Dept.	Alameda County	Co.	Pacific		
Phone #	510 567 6709	Phone #	408 441 7500		
Fax #	510 337 9335	Fax #	408 441 7539		



800 Carter St



**LEGEND**

MW-1 ● GROUNDWATER MONITORING WELL LOCATION AND DESIGNATION

SB-1 ● SOIL BORING LOCATION AND DESIGNATION

1 ✱ TEST BORING LOCATION AND DESIGNATION

SV-2 ● PROPOSED SOIL VAPOR PROBE LOCATION AND DESIGNATION

7-4100/50 SOIL SAMPLE DEPTH AND CONCENTRATION OF TPPH-g / BENZENE IN SOIL IN Mg/kg.

SOURCE: MAP BY GROUNDWATER TECHNOLOGY; DATED: 3-7-95

 <p>PACIFIC ENVIRONMENTAL GROUP, INC.</p>	<p>SCALE</p>  <p>0 20 40 FEET</p>	<p>FORMER SIGNAL SERVICE STATION 60600</p> <p>800 Center Street at 8th Street</p> <p>Oakland, California</p>	<p>FIGURE: 1</p>
		<p>SITE MAP</p>	<p>PROJECT: 320-162.1B</p>

14081 441-7539