

RECEIVED

By Alameda County Environmental Health 9:31 am, Aug 09, 2017

August 7, 2017
Cardno 2783C.L10

Pro Lube
6301 San Pablo Boulevard
Oakland, California 94608

Cardno

601 N. McDowell Boulevard
Petaluma, CA 94954
USA

Phone: +1 800 382 9105
Fax: +1 707 789 0414
Contractor: #997036

www.cardno.com

SUBJECT Notification of Field Activities
Former Mobil Service Station 99105
6301 San Pablo Ave, Oakland, California

To Whom It May Concern:

At the request of ExxonMobil Environmental Services (EMES), on behalf of ExxonMobil Oil Corporation, Cardno is notifying you of upcoming environmental activities at the subject site currently scheduled for August 11, 2017. Cardno anticipates sampling groundwater in the wells associated with the site. Well locations are illustrated on the attached Generalized Site Plan.

Cardno appreciates your cooperation in ensuring that fieldwork occurs safely and efficiently. Cardno will attempt to minimize disruptions to station operations while on site.

Please contact Mr. Scott Perkins, Cardno's project manager for this site, at scott.perkins@cardno.com or (707) 766-2000 with questions.

Sincerely,

SCANNED
IMAGE

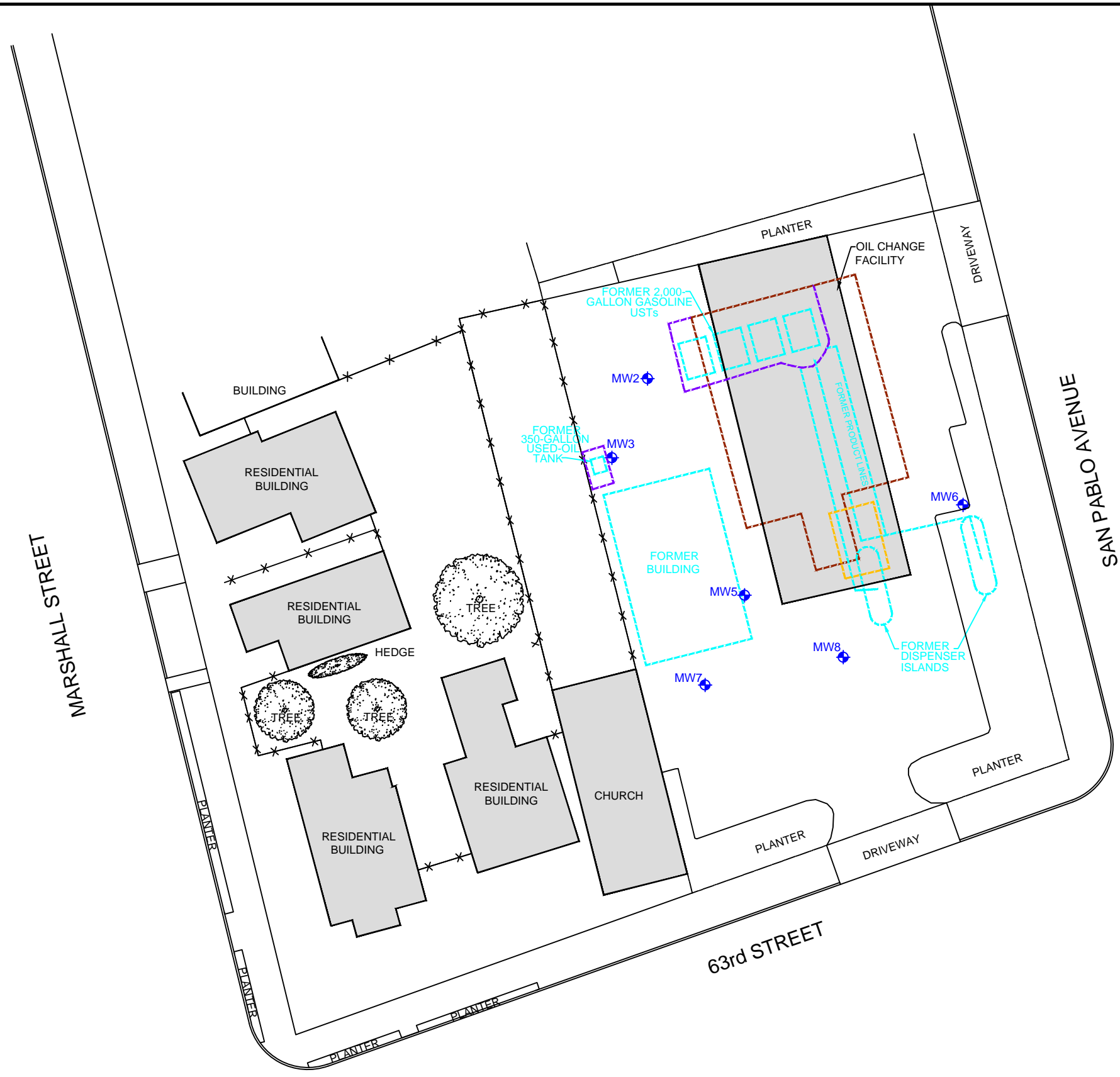

David R. Daniels
Senior Project Geologist
for Cardno
707 766 2000
Email: david.daniels@cardno.com

SCANNED
IMAGE

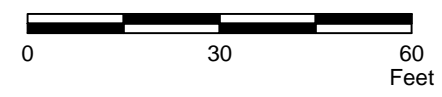

Scott Perkins
Project Manager
for Cardno
707 766 2000
Email: scott.perkins@cardno.com

Enclosure: Generalized Site Plan

cc: Ms. Jennifer C. Sedlachek, ExxonMobil Environmental Services Company
Ms. Karel Detterman, Alameda County Health Care Services Agency, Environmental Health Services



APPROXIMATE SCALE



FN 27830001

GENERALIZED SITE PLAN

FORMER MOBIL SERVICE STATION 99105
 6301 San Pablo Avenue
 Oakland, California

EXPLANATION

MW8
 Groundwater Monitoring Well

- 1994 Areas of Excavation
- 1996 Area of Excavation
- 1999 Area of Excavation

PROJECT NO.
2783

PLATE
1

