

JOHN H. DAILEY  
Consulting Geotechnical Engineer  
141 H Street, Suite A  
Petaluma, California 94952  
(707) 778-7978  
FAX (707) 778-8527

FAX (TELECOPIER) TRANSMITTAL COVER SHEET

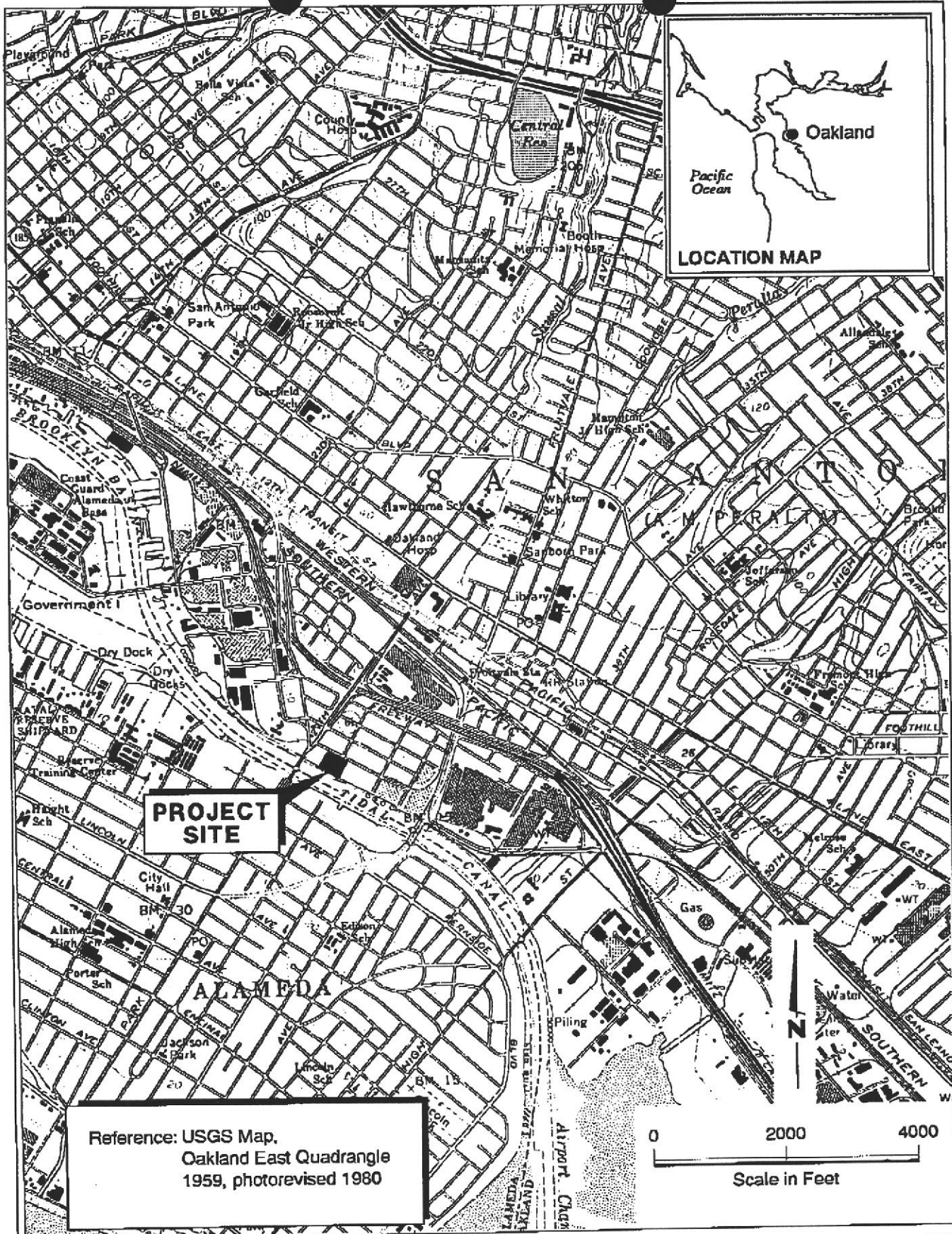
JOB NO: 9420.2  
TO: Barney Chan - Alameda County  
TELEPHONE NO.: (510) 337-9335  
DATE: 8/19/9  
FROM: John Dailey  
JOHN H. DAILEY, (707) 778-7978  
SUBJECT: Plates for 2901 Glascock Street  
Work Plan

JOHN H. DAILEY FAX (TELECOPIER) TELEPHONE NO. (707) 778-8527

NUMBER OF PAGES (INCLUDING THIS TRANSMITTAL COVER SHEET) 4

PLEASE NOTIFY SENDER IMMEDIATELY IF NOT RECEIVED PROPERLY

Will transmit new hard copy of Work Plan  
w/ Plates. Sorry for the inconvenience



**PROJECT SITE**

Reference: USGS Map,  
Oakland East Quadrangle  
1959, photorevised 1980

0 2000 4000  
Scale in Feet

**W. A. CRAIG, INC.**  
INDUSTRIAL AND ENVIRONMENTAL CONTRACTOR

**Site Location Map**  
2901 Glascock Street  
Oakland, California

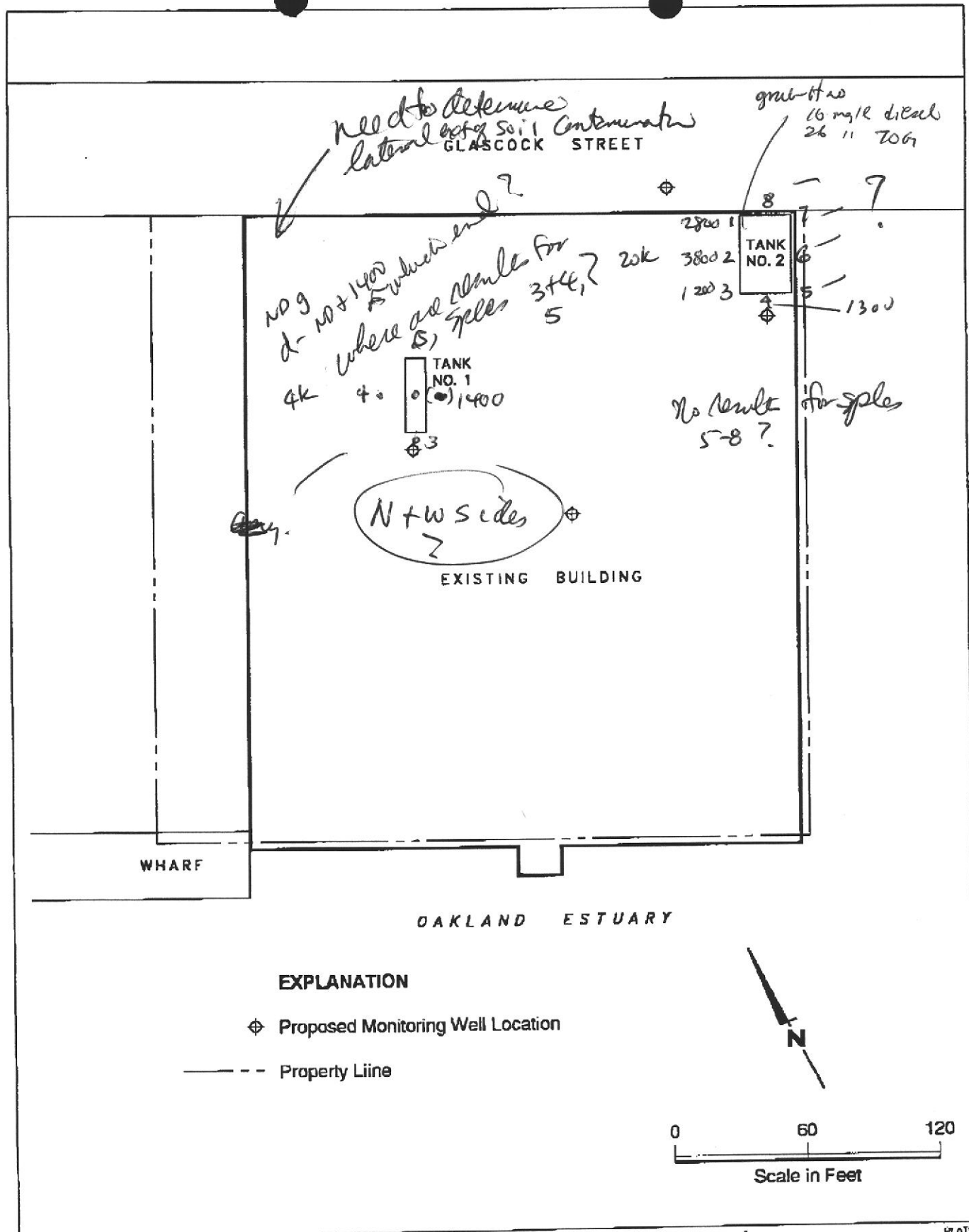
PLATE  
**1**

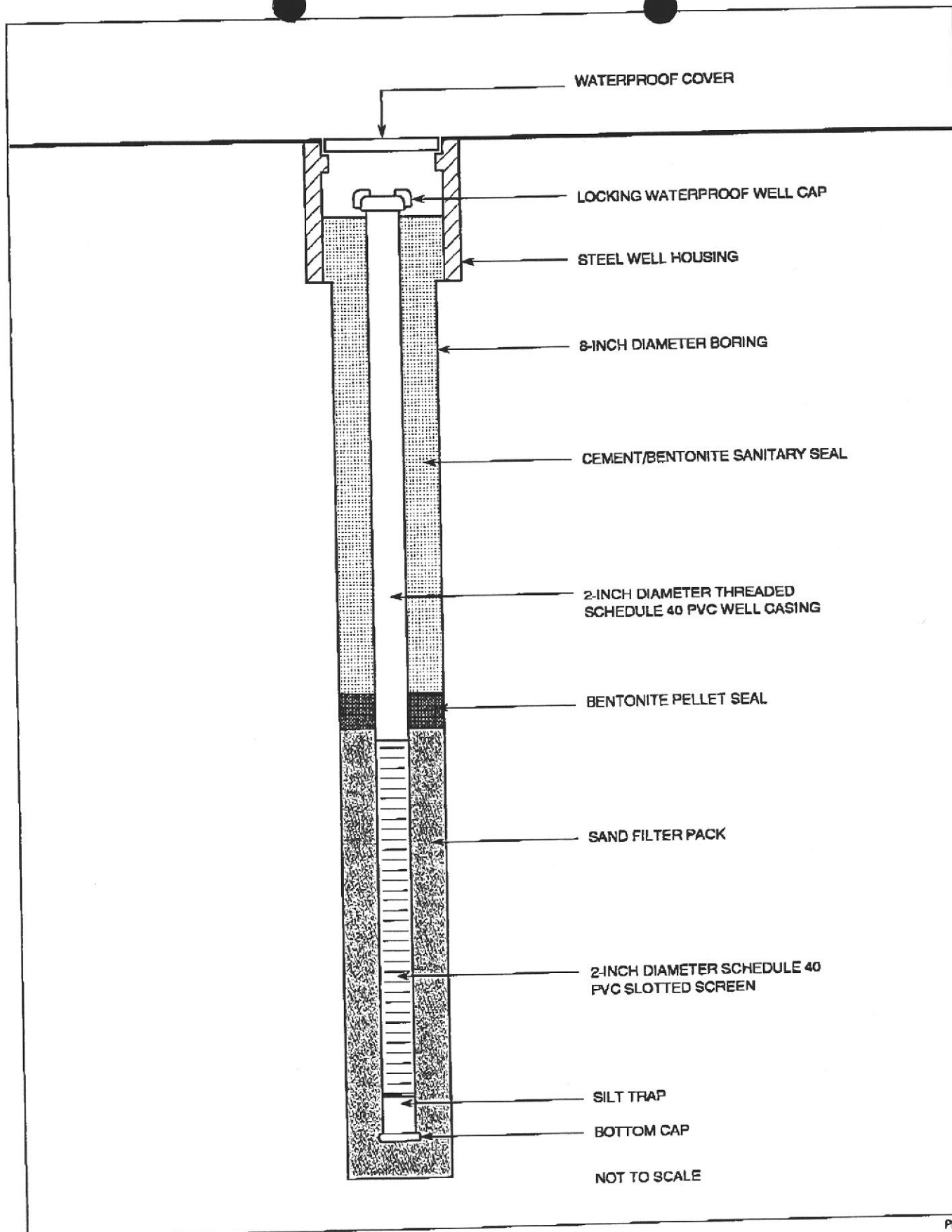
JOB NUMBER  
3406

REVIEWED BY  
*JHD*

DATE  
8/94

REVISED DATE





**W. A. CRAIG, INC.**  
 INDUSTRIAL AND ENVIRONMENTAL CONTRACTOR

**Typical Monitoring Well Detail**  
 2901 Glascock Street  
 Oakland, California

PLATE

**3**

JOB NUMBER  
 3406

REVIEWED BY *JMB*

DATE  
 8/94

REVISED DATE