

LOWNEY ASSOCIATES

Environmental/Geotechnical/Engineering Services

Transmittal

Date: August 27, 2003

Project No.: 1731-2G

To: Ms. Donna Drogos
ALAMEDA COUNTY HEALTH AGENCY
1131 Harbor Bay Parkway
Alameda, California 94502

RE: 2901 GLASCOCK STREET

Dear Donna,

A site map is enclosed showing the proposed ground water grab sample locations at 2901 Glascock Street. Analytical data tables also are enclosed. One location was selected near the former 20,000-gallon UST and former well MW-2. The other boring location was selected near former exploratory boring SB-7. Petroleum hydrocarbons were detected in soil samples collected from the ground water bearing zone in both of the former boring locations.

As requested, soil samples will be collected at the two proposed locations from within the top of the ground water zone, likely at a depth of approximately 10 feet. If these locations are acceptable to you, we will prepare a work plan for the sampling.

Please call me if you have any questions.

Very truly yours,


Lowney Associates
Peter Langtry, C.E.G.
Principal Environmental Geologist
plangtry@lowney.com

Copies: Addressee (1)
Signature Properties (1)
Attn: Ms. Mary Grace Houlihan

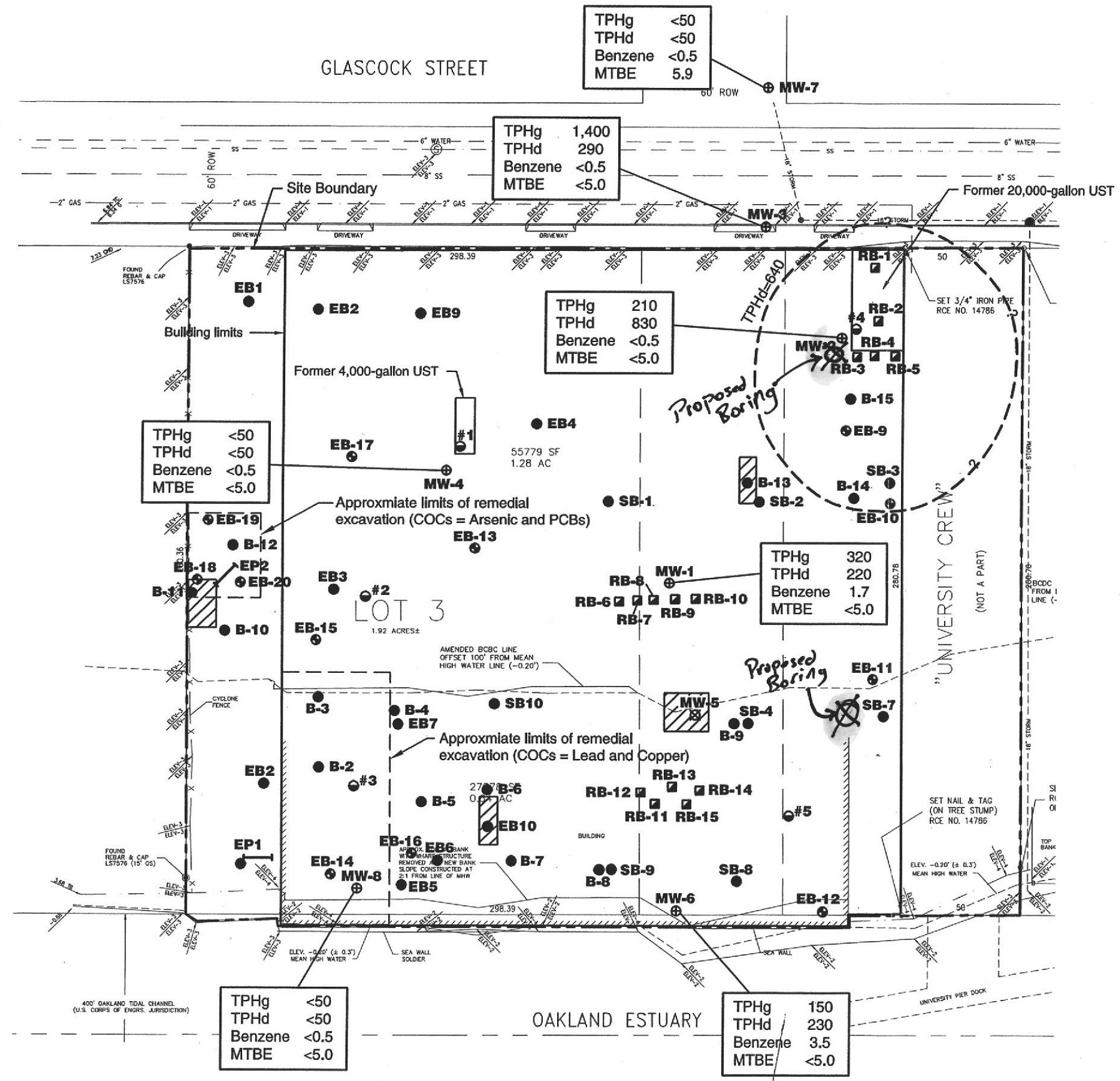
MOUNTAIN VIEW
405 Clyde Avenue
CA 94043
T: 650.967.2365
F: 650.967.2785

FAIRFIELD
2850 Cordelia Road
Suite 140
CA 94534
T: 707.423.2523
F: 707.428.1725

OAKLAND
167 Filbert Street
CA 94607
T: 510.267.1970
F: 510.267.1972

SAN RAMON
2258 Camino Ramon
CA 94583
T: 925.275.2550
F: 925.275.2555

FULLERTON
251 E. Imperial Hwy
Suite 470
CA 92835
T: 714.441.3090
F: 714.441.3091



- LEGEND**
- - Approximate location of exploratory boring (Lowney 2002)
 - ⊙ - Approximate location of exploratory boring (Lowney 2001)
 - ⊕ - Approximate location of extraction/monitoring well
 - △ - Approximate location of soil vapor boring
 - ▣ - Approximate location of remediation boring (1999)
 - - Approximate location of soil sample (1995)
 - ⊖ - Approximate location of test pit (1995)
 - ⊙ - Approximate location of soil sample (1993)
 - ⊗ - Approximate location of destroyed ground water monitoring well
 - ▨ - Soil excavation areas (1996)
 - - - - Ground water concentrations exceeding ecological cleanup goals

Note:
 Analytical results in parts per billion
 Ground water results from November 2002 ground water monitoring event



EXTENT OF CONTAMINATION
 2901 GLASCOCK STREET
 Oakland, California

LOWNEY ASSOCIATES
 Environmental/Geotechnical/Engineering Services

FIGURE 2
 1731-2G

Base by KCA Engineers.

Table B-1:
Total Petroleum Hydrocarbons and PCBs in Soil (ppm)
2901 Glascock Street

Boring/ Sample ID	Depth (feet)	Date Sampled	TPHg	TPHd	TPHmo	TPH o&g	TRPH	Benzene	Toluene	Ethyl- benzene	Xylene	MTBE	PCBs	PAHs	Consultant	Cleanup Goals Exceeded (Y/N)	Description
# 1	6	1/27/1993	<0.2	<1	--	--	--	<0.001	<0.005	<0.001	<0.001	--	--	--	PRE	N	
# 2	5	1/27/1993	<0.2	<1	--	--	--	<0.001	<0.005	<0.001	<0.005	--	--	--	PRE	N	
# 3	1.5	1/27/1993	<0.2	<1	--	--	--	<0.001	<0.001	<0.001	<0.01	--	--	--	PRE	N	
# 4	1.5	1/27/1993	<5	<25	--	--	--	<0.03	0.03	0.05	1.3	--	--	--	PRE	N	
# 5	1.5	1/27/1993	<0.5	<3	--	--	--	<0.003	<0.003	<0.003	<0.003	--	--	--	PRE	N	
1	9	2/23/1993	<1	<1	--	--	--	<0.005	<0.005	<0.005	<0.005	--	--	--	PRE	N	Confirmation samples from 4,000-gallon UST removal
2	9	2/23/1993	1	1,400	--	--	--	<0.005	<0.005	<0.005	<0.005	--	--	--	PRE	N	Confirmation samples from 4,000-gallon UST removal
1 soil	12	2/26/1993	--	2,800	--	1,400	--	<0.030	<0.030	0.49	0.09	--	--	--	PRE	N	Confirmation samples from 20,000-gallon UST removal
2 soil	12	2/26/1993	--	3,800	--	1,900	--	<0.030	<0.030	0.09	<0.030	--	--	--	PRE	N	Confirmation samples from 20,000-gallon UST removal
3 soil	12	2/26/1993	--	1,200	--	390	--	<0.030	<0.030	<0.030	<0.030	--	--	--	PRE	N	Confirmation samples from 20,000-gallon UST removal
4 soil	12	2/26/1993	--	1,300	--	520	--	<0.030	<0.030	<0.030	<0.030	--	--	--	PRE	N	Confirmation samples from 20,000-gallon UST removal
MW-1	5	9/23/1994	<1.0	<10	--	--	--	<0.005	<0.005	<0.005	<0.005	--	--	--	W. A. Craig Inc.	N	
MW-1	10	9/23/1994	48	300	--	--	--	<0.005	0.005	<0.005	0.086	--	--	--	W. A. Craig Inc.	N	
MW-1	15	9/23/1994	4.3	130	46	--	--	<0.005	<0.005	<0.005	<0.005	--	--	--	W. A. Craig Inc.	N	
MW-2	4.5	9/23/1994	26	250	--	--	--	<0.005	<0.005	0.017	0.021	--	--	--	W. A. Craig Inc.	N	
MW-2	9	9/23/1994	52	830	--	--	--	<0.005	0.018	<0.005	0.190	--	--	--	W. A. Craig Inc.	N	
MW-2	14.5	9/23/1994	50	7,900	3,900	--	--	0.039	0.022	0.61	0.84	--	--	--	W. A. Craig Inc.	N	
MW-3	5	9/23/1994	<1.0	<10	--	--	--	<0.005	<0.005	<0.005	<0.005	--	--	--	W. A. Craig Inc.	N	
MW-3	9.5	9/23/1994	110	780	--	--	--	<0.04	<0.04	<0.04	0.30	--	--	--	W. A. Craig Inc.	N	
MW-3	15	9/23/1994	<1.0	<10	<40	--	--	<0.005	<0.005	<0.005	<0.005	--	--	--	W. A. Craig Inc.	N	
MW-4	5	9/23/1994	<1.0	<10	--	--	--	<0.005	<0.005	<0.005	<0.005	--	--	--	W. A. Craig Inc.	N	
MW-4	9	9/23/1994	<1.0	<10	--	--	--	<0.005	<0.005	<0.005	<0.005	--	--	--	W. A. Craig Inc.	N	
MW-4	14	9/23/1994	1.9	<10	<40	--	--	<0.005	<0.005	<0.005	0.007	--	--	--	W. A. Craig Inc.	N	
SB-1	9	3/29/1995	100	500	230	--	--	<0.01	<0.01	<0.01	0.15	--	--	--	W. A. Craig Inc.	N	
SB-1	14	3/29/1995	24	220	99	--	--	<0.005	0.006	<0.005	0.043	--	--	--	W. A. Craig Inc.	N	
SB-2	8	3/29/1995	130	980	410	--	--	<0.005	0.020	<0.005	0.15	--	--	--	W. A. Craig Inc.	N	
SB-2	13	3/29/1995	56	300	120	--	--	<0.005	0.006	<0.005	0.098	--	--	--	W. A. Craig Inc.	N	
SB-3	7	3/29/1995	79	540	220	--	--	<0.05	<0.05	<0.05	<0.05	--	--	--	W. A. Craig Inc.	N	
SB-3	12	3/29/1995	42	210	81	--	--	<0.005	0.007	<0.005	0.076	--	--	--	W. A. Craig Inc.	N	
SB-3	15.5	3/29/1995	1.6	57	22	--	--	<0.005	<0.005	<0.005	0.008	--	--	--	W. A. Craig Inc.	N	
SB-4	8	3/29/1995	4.1	320	420	--	--	<0.005	<0.005	<0.005	0.008	--	--	--	W. A. Craig Inc.	N	
SB-4	13	3/29/1995	3.7	66	83	--	--	<0.005	<0.005	<0.005	<0.005	--	--	--	W. A. Craig Inc.	N	
SB-4	18	3/30/1995	1.4	1.5	<10	--	--	<0.005	<0.005	<0.005	<0.005	--	--	--	W. A. Craig Inc.	N	
SB-7	8	3/30/1995	1,700	1,100	280	--	--	3	9.9	19	81	--	--	--	W. A. Craig Inc.	N	
SB-7	11.5	3/30/1995	170	230	54	--	--	0.42	0.78	1.7	5.9	--	--	--	W. A. Craig Inc.	N	
SB-7	16.5	3/30/1995	5.4	21	<10	--	--	<0.005	0.021	0.030	0.077	--	--	--	W. A. Craig Inc.	N	
SB-8	8	3/30/1995	<1.0	10	34	--	--	<0.005	<0.005	<0.005	<0.005	--	--	--	W. A. Craig Inc.	N	
SB-8	13	3/30/1995	12	230	220	--	--	<0.005	0.008	0.005	0.022	--	--	--	W. A. Craig Inc.	N	
SB-8	17	3/30/1995	18	270	180	--	--	0.009	0.020	0.007	0.040	--	--	--	W. A. Craig Inc.	N	
SB-9	8	3/30/1995	56	960	570	--	--	<0.005	<0.005	0.010	0.035	--	--	--	W. A. Craig Inc.	N	
SB-9	12.5	3/30/1995	590	5700	2,300	--	--	<0.1	0.15	0.33	2.4	--	--	--	W. A. Craig Inc.	N	
SB-10	16.5	3/30/1995	<1.0	<1.0	<10	--	--	<0.005	<0.005	<0.005	<0.005	--	--	--	W. A. Craig Inc.	N	
EB-1	5	4/17/1995	<1.0	<1.0	--	--	--	<0.005	<0.005	<0.005	<0.005	--	--	--	W. A. Craig Inc.	N	
EB-2	4	4/17/1995	<1.0	<1.0	--	--	--	<0.005	<0.005	<0.005	<0.005	--	<0.1	--	W. A. Craig Inc.	N	
EB-3	3	4/17/1995	<1.0	<1.0	--	--	--	<0.005	<0.005	<0.005	<0.005	--	--	--	W. A. Craig Inc.	N	
EB-3	4	4/17/1995	<1.0	<1.0	--	--	--	<0.005	<0.005	<0.005	<0.005	--	--	--	W. A. Craig Inc.	N	
EB-5	4	4/17/1995	<1.0	<1.0	--	--	--	<0.005	<0.005	<0.005	<0.005	--	--	--	W. A. Craig Inc.	N	
EB-6	2	4/18/1995	<1.0	7.9	--	--	--	<0.005	<0.005	<0.005	<0.005	--	--	--	W. A. Craig Inc.	N	
EB-7	5.5	4/18/1995	<1.0	<1.0	--	--	<50	<0.005	<0.005	<0.005	<0.005	--	0.4	--	W. A. Craig Inc.	Y	Will be removed during August 2003
EB-8	5.5	4/18/1995	<1.0	1.8	--	--	--	<0.005	<0.005	<0.005	<0.005	--	--	--	W. A. Craig Inc.	N	
EB-9	5.5	4/18/1995	<1.0	<1.0	--	--	--	<0.005	<0.005	<0.005	<0.005	--	--	--	W. A. Craig Inc.	N	
EP-1	1	4/17/1995	<1.0	<1.0	--	--	--	<0.005	<0.005	<0.005	<0.005	--	<0.1	--	W. A. Craig Inc.	N	
EP-1	4	4/17/1995	<1.0	<1.0	--	--	--	<0.005	<0.005	<0.005	<0.005	--	--	--	W. A. Craig Inc.	N	
EP-2	4	4/17/1995	<1.0	<1.0	--	--	--	<0.005	<0.005	<0.005	<0.005	--	--	--	W. A. Craig Inc.	N	
Sand Blast	0	4/18/1995	--	<1.0	--	--	--	0.029	0.017	0.030	0.014	--	--	--	W. A. Craig Inc.	N	
Shavings	2	4/18/1995	--	20	--	--	--	0.86	1.4	1.9	4.7	--	--	--	W. A. Craig Inc.	N	
MW-5	8	4/27/1995	<1.0	<1.0	<10	--	--	<0.005	<0.005	<0.005	<0.005	--	--	--	W. A. Craig Inc.	N	
MW-5	12	4/27/1995	99	1,800	730	--	--	<0.005	0.017	0.023	0.20	--	--	--	W. A. Craig Inc.	N	

Table B-1:
Total Petroleum Hydrocarbons and PCBs in Soil (ppm)
2901 Glascock Street

Boring/ Sample ID	Depth (feet)	Date Sampled	TPHg	TPHd	TPHmo	TPH o&g	TRPH	Benzene	Toluene	Ethyl- benzene	Xylene	MTBE	PCBs	PAHs	Consultant	Cleanup Goals Exceeded (Y/N)	Description
MW-6	8	4/27/1995	8.7	620	390	--	--	<0.005	<0.005	<0.005	<0.005	--	--	--	W. A. Craig Inc.	N	
MW-6	12	4/27/1995	4.7	46	21	--	--	<0.005	<0.005	<0.005	0.005	--	--	--	W. A. Craig Inc.	N	
MW-7	10	4/27/1995	<1.0	<1.0	<10	--	--	<0.005	<0.005	<0.005	<0.005	--	--	--	W. A. Craig Inc.	N	
B-2	1	11/10/1995	--	--	--	--	--	--	--	--	--	--	0.66	--	PEG	Y	Will be removed during August 2003
B-3	6	11/10/1995	--	<200	720	--	--	--	--	--	--	--	--	--	PEG	N	
B-4	1	11/10/1995	--	--	--	--	--	--	--	--	--	--	0.03	--	PEG	N	
B-5	1	11/10/1995	--	--	--	--	--	--	--	--	--	--	<0.017	--	PEG	N	
B-6	1	11/10/1995	--	11	22	--	--	--	--	--	--	--	<0.017	--	PEG	N	
B-6	5	11/10/1995	--	<10	<10	--	--	--	--	--	--	--	--	--	PEG	N	
B-7	1	11/10/1995	--	32	45	--	--	--	--	--	--	--	0.019	--	PEG	N	
B-7	5	11/10/1995	--	<10	<10	--	--	--	--	--	--	--	--	--	PEG	N	
B-8	5	11/10/1995	--	<10	<10	--	--	--	--	--	--	--	--	--	PEG	N	
B-9	5	11/10/1995	--	12	<10	--	--	--	--	--	--	--	--	--	PEG	N	
B-10	1	11/10/1995	--	--	--	--	--	--	--	--	--	--	0.044	--	PEG	N	
B-11	1	11/10/1995	--	--	--	--	--	--	--	--	--	--	0.21	--	PEG	N	
B-12	1	11/10/1995	--	--	--	--	--	--	--	--	--	--	130	--	PEG	Y	Will be removed during August 2003
B-14	5	11/10/1995	--	<10	<10	--	--	--	--	--	--	--	--	--	PEG	N	
B-15	5	11/10/1995	--	<10	<10	--	--	--	--	--	--	--	--	--	PEG	N	
MW-8	1	11/10/1995	--	--	--	--	--	--	--	--	--	--	1.5	--	PEG	N	
B-13-N	3	10/1/1996	--	<10	<10	--	--	--	--	--	--	--	--	--	PEG	N	Confirmation sample
B-13-S	3	10/1/1996	--	26	48	--	--	--	--	--	--	--	--	--	PEG	N	Confirmation sample
B-13-E	3	10/1/1996	--	<10	<10	--	--	--	--	--	--	--	--	--	PEG	N	Confirmation sample
B-13-BT	5	10/1/1996	--	<10	<10	--	--	--	--	--	--	--	--	--	PEG	N	Confirmation sample
EB-10-N	3	10/1/1996	--	<10	<10	--	--	--	--	--	--	--	--	--	PEG	N	Confirmation sample
EB-10-S	3	10/1/1996	--	<10	<10	--	--	--	--	--	--	--	--	--	PEG	N	Confirmation sample
EB-10-E	3	10/1/1996	--	23	83	--	--	--	--	--	--	--	--	--	PEG	N	Confirmation sample
EB-10-W	3	10/1/1996	--	32	110	--	--	--	--	--	--	--	--	--	PEG	N	Confirmation sample
EB-10-BT	5	10/1/1996	--	<10	12	--	--	--	--	--	--	--	--	--	PEG	N	Confirmation sample
MW-5-N	3	10/1/1996	--	150	100	--	--	--	--	--	--	--	--	--	PEG	N	Confirmation sample
MW-5-S	3	10/1/1996	--	<10	<10	--	--	--	--	--	--	--	--	--	PEG	N	Confirmation sample
MW-5-E	3	10/1/1996	--	220	230	--	--	--	--	--	--	--	--	--	PEG	N	Confirmation sample
MW-5-W	3	10/1/1996	--	13	29	--	--	--	--	--	--	--	--	--	PEG	N	Confirmation sample
MW-5-BT	5	10/1/1996	--	22	15	--	--	--	--	--	--	--	--	--	PEG	N	Confirmation sample
EP2-N	1.5	10/1/1996	--	<10	<10	--	--	--	--	--	--	--	0.16	--	PEG	N	Confirmation sample
EP2-S	1.5	10/1/1996	--	<10	11	--	--	--	--	--	--	--	<0.033	--	PEG	N	Confirmation sample
EP2-E	1.5	10/1/1996	--	<10	<10	--	--	--	--	--	--	--	0.1	--	PEG	N	Confirmation sample
EP2-W-2	1.5	12/5/1996	--	--	--	--	--	--	--	--	--	--	35	--	PEG	Y	Confirmation sample. Collected from property line.
EP2-BT	3	10/1/1996	--	<10	<10	--	--	--	--	--	--	--	<0.033	--	PEG	N	Confirmation sample
EB-9	2-2½	10/1-2/01	--	--	--	--	--	--	--	--	--	--	<0.05	<RBSL	Lowney Associates	N	
EB-10	4-4½	10/1-2/01	--	--	--	--	--	--	--	--	--	--	<0.05	ND	Lowney Associates	N	
EB-11	4½-5	10/1-2/01	--	--	--	--	--	--	--	--	--	--	<0.05	ND	Lowney Associates	N	
EB-11	5½-6	10/1-2/01	--	--	--	--	--	--	--	--	--	--	<0.05	<RBSL	Lowney Associates	N	
EB-12	3-3½	10/1-2/01	--	--	--	--	--	--	--	--	--	--	<0.05	<RBSL	Lowney Associates	N	
EB-12	4-4½	10/1-2/01	--	--	--	--	--	--	--	--	--	--	<0.05	ND	Lowney Associates	N	
EB-14	4-4½	10/1-2/01	--	--	--	--	--	--	--	--	--	--	<0.05	ND	Lowney Associates	N	
EB-15	3-3½	10/1-2/01	--	--	--	--	--	--	--	--	--	--	0.062	<RBSL	Lowney Associates	N	
EB-16	3½-4	10/1-2/01	--	--	--	--	--	--	--	--	--	--	0.21	<RBSL	Lowney Associates	N	
EB-16	4½-5	10/1-2/01	--	--	--	--	--	--	--	--	--	--	0.11	<RBSL	Lowney Associates	N	
EB-17	2½-3	10/1-2/01	--	--	--	--	--	--	--	--	--	--	<0.05	ND	Lowney Associates	N	
EB-18	2-2½	10/1-2/01	--	--	--	--	--	--	--	--	--	--	0.37	<RBSL	Lowney Associates	Y	Will be removed during August 2003
EB-19	2½-3	10/1-2/01	--	--	--	--	--	--	--	--	--	--	0.39	<RBSL	Lowney Associates	Y	Will be removed during August 2003
EB-20	2½-3	10/1-2/01	--	--	--	--	--	--	--	--	--	--	0.12	<RBSL	Lowney Associates	N	

<RBSL - PAH concentrations are below respective residential PRG, City of Oakland RBSL, and CRWQCB RBSL concentrations

PRE - Pacific Rim Environmental

PEG - Pacific Environmental Group

Note: Table does not show samples excavated/ removed from the site.