

20-436



6602 Owens Dr. Suite 100  
Pleasanton, California 94588  
[www.atc-enviro.com](http://www.atc-enviro.com)  
925.460.5300  
Fax 925.463.2559

April 29, 2005

Mr. Robert Schultz  
Alameda County Health Care Services Agency  
1131 Harbor Bay Parkway  
Alameda, CA 94502-6577

Alameda County  
MAY 05 2005  
Environmental Health

**Re: Quarterly Summary Report – First Quarter 2005**  
76 Service Station No. 4186 / CoP No. WNO 1237  
1771 First Street  
Livermore, California

Dear Mr. Schultz:

On behalf of ConocoPhillips Company (ConocoPhillips), ATC Associates Inc. (ATC) is forwarding the quarterly summary report for the above referenced facility.

Sincerely,  
ATC ASSOCIATES INC.

David A. Evans  
Senior Project Manager

Janine Weber-Band, PhD, CEG #2286  
Principal Geologist



Attachment: Site Plan  
Quarterly Monitoring Report, prepared by TRC  
Quarterly Remedial Performance Summary First Quarter 2005 report, prepared by Secor

Cc: Ms. Shelby Lathrop, ConocoPhillips



**Shaw™** Shaw Environmental, Inc.

4005 Port Chicago Hwy  
Concord, California 94520

Mr. Robert Schultz  
Alameda County Health Agency  
1131 Harbor Bay Parkway  
Alameda, California 94502

Re: **Report Transmittal  
Quarterly Report  
First Quarter – 2005  
76 Service Station #4186  
1771 First Street  
Livermore, CA**

Dear Mr. Schultz:

I declare under penalty of perjury that to the best of my knowledge the information and/or recommendations contained in the attached report is/are true and correct.

If you have any questions or need additional information, please call me at (916) 558-7609.

Sincerely,

**Shelby Suzanne Lathrop**  
Project Manager  
Shaw Environmental, Inc.  
Approved service provider of ConocoPhillips -Risk Management & Remediation  
Cell: 707-592-1146

Client Contact Information:  
**ConocoPhillips**  
76 Broadway  
Sacramento, California 95818  
Client office: 916-558-7609  
Client fax: 916-558-7639

Attachment  
cc: Liz Sewell, ConocoPhillips



SECOR  
INTERNATIONAL  
INCORPORATED

www.sec.or.com  
3017 Kilgore Road, Suite 100  
Rancho Cordova, CA 95670  
916-861-0400 TEL  
916-861-0430 FAX

April 26, 2005

Ms. Shelby Lathrop  
ConocoPhillips  
76 Broadway  
Sacramento, CA 95818

**RE: Quarterly Remedial Performance Summary-First Quarter 2005**  
76 Service Station No. 4186  
1771 First Street  
Livermore, CA  
SECOR Project No.: 77CP.60004.04.4186

Dear Ms. Lathrop:

This letter, prepared by SECOR International Incorporated (SECOR) on behalf of ConocoPhillips, presents a remedial action performance summary for the ozone injection system operating at the site referenced above. Included in this report are tables and figures summarizing the system operation during the current quarter. Field data sheets and laboratory reports are included as Attachments A and B, respectively. A brief site background and the status of recent remedial activities are presented below.

### **SITE BACKGROUND**

The site is an operating 76 service station located at First Street between N and O Streets in Livermore, California. The current station configuration consists of a service station building, four product dispenser islands, and two underground storage tanks (USTs). There is an ozone injection remediation system on the sites that injects a mixture of ozone and air to ten sparge points. The system was put into operation on December 19, 2001. SECOR took over operation of the system in September 2003.

### **REMEDIAL PERFORMANCE SUMMARY**

#### **Ozone Injection Operation**

The ozone injection system consists of a panel mounted KVA C-Sparge™ System that produces up to 4 grams per hour (0.009 pounds per hour) of ozone. The system supplies ozone to ten sparge points in eight wells for seven minutes per well, 18 cycles per day. Operation of the ozone injection system was initiated on December 19, 2001. The system was non-operational for most of the quarter. The compressor piston was leaking ozone; a piston replacement kit was installed on February 28, 2005. On March 29 the system was found down due to a tripped breaker. Operational data is provided in Table 1.

#### **Ozone Injection Performance**

Monthly groundwater samples are collected from monitoring wells U-3 and U-6 and analyzed for total petroleum hydrocarbons as gasoline (TPHg), benzene, toluene, ethylbenzene, and total xylenes (BTEX), and methyl tert-butyl ether (MtBE). Results of

Quarterly Remedial Performance Summary  
April 26, 2005  
Page 2

monthly groundwater sampling events are summarized in Table 2. Concentration versus time graphs for dissolved TPHg, benzene, and MtBE in monitoring wells U-3 and U-6 are provided in Figures 2 and 3. Field data sheets are presented in Attachment A. Certified laboratory analytical reports and chain-of-custody documentation for the groundwater monitoring events conducted during the current quarter are provided in Attachment B.

If you have any questions, please contact us at (916) 861-0400.

Sincerely,  
**SECOR International Incorporated**

  
Amy Draffan  
Project Engineer

  
Rusty E. Benkosky, P.E.  
Senior Engineer



Attachments: Figure 1 – Site Plan  
Figure 2 – U-3 TPHg, Benzene, and MtBE Groundwater Concentrations  
Figure 3 – U-6 TPHg, Benzene, and MtBE Groundwater Concentrations

Table 1 – System Operation Data  
Table 2 – Groundwater Analytical Data

Attachment A – Field Data Sheets  
Attachment B – Certified Laboratory Analytical Reports and Chain of Custody Documentation

cc: Mr. Dan Truzzolino, DXT Services

RB/ad

---

**QUARTERLY SUMMARY REPORT**  
**First Quarter 2005**

76 Service Station No. 4186 / CoP No. WNO 1237  
1771 First Street  
Livermore, California

City/County ID#: Livermore  
County: Alameda

Alameda County  
MAY 9 2005  
Environmental Health

**PREVIOUS SITE ACTIVITY**

The subject site is an operating service station located on the southwest corner of First Street (State Highway 84) and N Street in Livermore, California. Properties in the immediate site vicinity are used for commercial purposes that include restaurants, automobile repair shops, and shopping facilities. The site contains four dispenser islands, a canopy, station building/convenience store, and two 10,000-gallon gasoline USTs.

June 1996 - Dispenser and piping replacement activities were completed.

September 1997 - A soil gas survey was conducted as part of a baseline site evaluation associated with the property transfer from Unocal Corporation to Tosco. Six soil gas probes were advanced and samples collected at 3 to 15 feet bgs in the vicinity of the UST complex, dispenser islands, and product lines.

April 1998 - A receptor survey was conducted from the Alameda County Zone 7 Water Agency. Two municipal wells were identified approximately 1,500 and 1,800 feet northwest of the site, and two domestic wells were located approximately 1,900 and 2,800 feet southwest and west of the site.

June 1998 - Monitor wells U-1 through U-3 were installed.

May 2000 - A site conceptual model was completed for the site. Results indicated a groundwater velocity of 46 feet per year.

February 2001 Offsite monitor wells U-4 and U-5 were installed

December 2001 - Ten onsite soil borings (U-6, U-7 and SP-1 through SP-8) were installed. Borings U-6 and U-7 were converted to monitor wells. Borings SP-1 through SP-8 were completed as sparge points with the installation of 2-inch diameter KVA sparge points attached to 1/2-inch blank schedule 80 PVC casing. The sparge points were constructed of 3-inch long microporous plastic. Sparge points SP-1 through SP-4 were installed to a depth of 45 feet bgs. Sparge points SP-6S and SP-7S were installed to a depth of 25 feet bgs. The remaining two sparge locations contained nested sparge points (SP-5, SP-5S, SP-8 and SP-8S) installed to 25 and 45 feet bgs in each boring, respectively.

---

An ozone remediation system was installed consisting of a "C-Sparge™" ozone microsparging unit. The C-Sparge™ unit included a control panel, an ozone generator, air compressor, and a programmable timer/controller.

January 2005 – ATC became the new lead site consultant.

### **SENSITIVE RECEPTORS**

Receptor Survey conducted from the Alameda County Zone 7 Water Agency. Two municipal wells were identified approximately 1,500 and 1,800 feet northwest of the site, and two domestic wells were located approximately 1,900 and 2,800 feet southwest and west of the site.

### **GROUNDWATER MONITORING AND SAMPLING**

Groundwater is currently monitored and sampled on a quarterly basis each year. During the March 23, 2005 monitoring and sampling event, groundwater depths ranging from 21.64 feet (U3) to 25.45 feet (U5) below top of casing (TOC). The groundwater flow direction was reported towards the west at a gradient of 0.04 ft/ft. Maximum dissolved groundwater concentrations were present as follows: TPHH (21,000 ug/L in U3), benzene (94 ug/L in U3), and methyl tertiary butyl ether (MtBE) (6,200 ug/L in U3).

### **REMEDIATION STATUS**

The ozone sparge system, manufactured by KVA, was placed into operation on December 19, 2001 and is designed to cycle the ozone/oxygen injection between 8 sparge points. A typical injection schedule for this site was design to operate at 18 times a day at 5 and 15 minutes per point per cycle. The system's current cycle frequency is 7 minutes.

To date the system has operated for 9,172 hours and has injected 83 pounds of ozone. For the first quarter of 2005, the system was operational for 7 hours. Equipment malfunctions, namely a faulty compressor piston, resulted in the down-time during this reporting period.

### **CHARACTERIZATION STATUS**

Based on current and historic data, the dissolved MtBE plume is not defined in the upgradient direction. The upgradient-most well, U-3, contained 6,200 ug/l MtBE during the Q1 2005 sampling event. The offsite, down gradient-most well, U-5, contained 0.65 ug/l of MtBE during Q4 2004. An overall decrease in MtBE concentration was observed across the site from Q4 2004 to Q1 2005. This may be attributed to an observed 8 feet (on average) water table increase since the last reporting period.

### **RECENT COORESPONDENCE**

No correspondence was prepared this quarter

### **THIS QUARTER ACTIVITIES (First Quarter 2005)**

1. ATC Associates Inc. (ATC) became the new lead consultant for the site.

## **WASTE DISPOSAL SUMMARY**

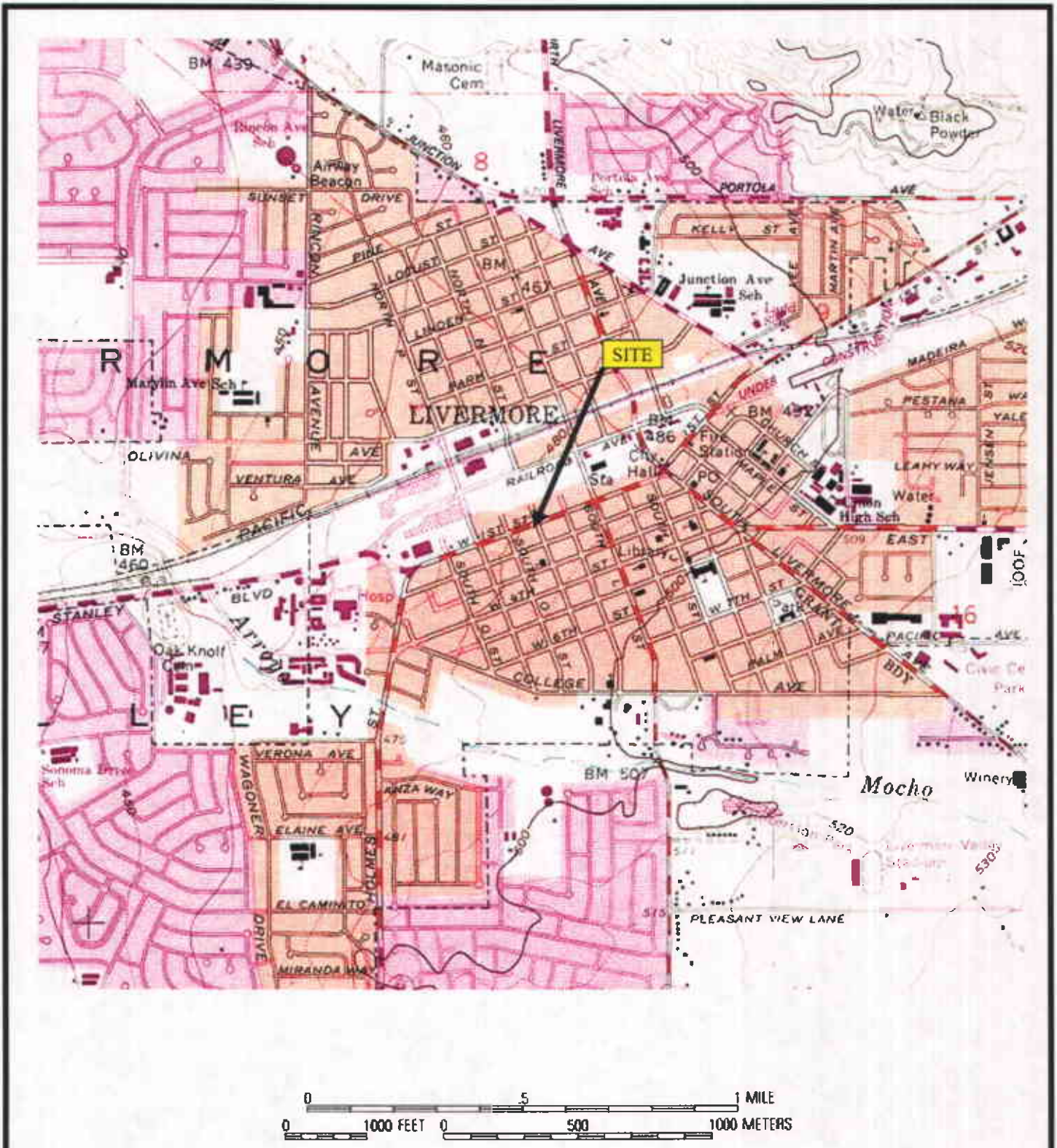
No waste was generated this quarter.

June 1996 - A total of 25 cubic yards of soils was excavated and disposed.

## **NEXT QUARTER ACTIVITIES (Second Quarter 2005)**

1. Additional onsite assessment requirements will be discussed with the lead regulatory agency to determine if any is required.
2. Once the ozone sparge system has been repaired, the operation and maintenance (O&M) frequency for the second quarter will be modified to increase maintenance visits, in order to improve system performance. The O&M frequency may return to monthly once the system has achieved a sufficient run-time percentage.
3. An engineering system review will be conducted to evaluate the effectiveness of the current ozone system. The equipment malfunctions (faulty pistons and tripped breakers) have been chronic and have significantly limited the system run-time and effectiveness.
4. Site background information will be checked to ensure that upgradient dissolved MTBE levels are not related to other potential gasoline plumes in the site vicinity.

**CONSULTANT:** ATC Associates Inc.

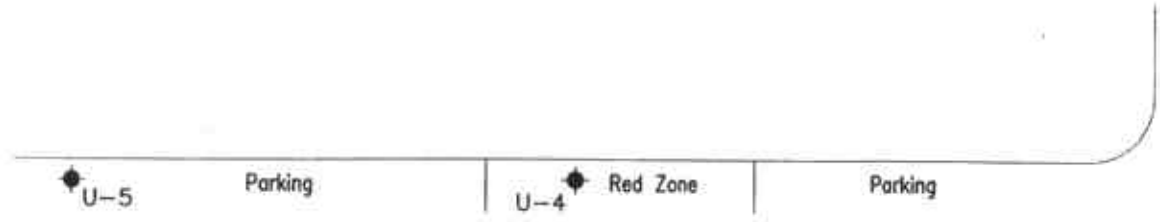


SOURCE: USGS LIVERMORE QUADRANGLE, CALIFORNIA (7.5 MINUTE SERIES) TOPOGRAPHIC MAP. OBTAINED FROM THE 2000 NATIONAL GEOGRAPHIC TOPO! SOFTWARE.

 <b>VATC</b> <small>ASSOCIATES, INC.</small>		
6602 Owens Drive, Suite 100 Pleasanton, CA 94588 (925) 460-5300		
PROJECT NO: 75.75118.1237		
DESIGNED BY: DE	SCALE: N/A	REVIEWED BY: DE
DRAWN BY: EC	DATE: 04/05	FILE: 4186 SITE VIC

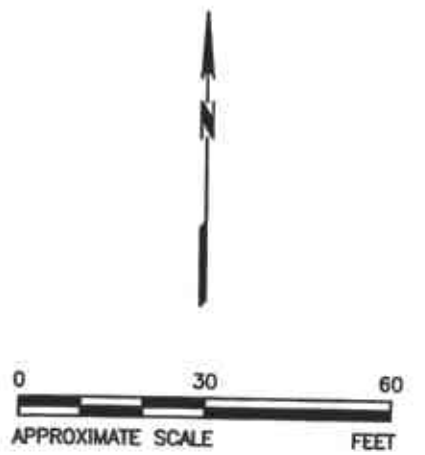
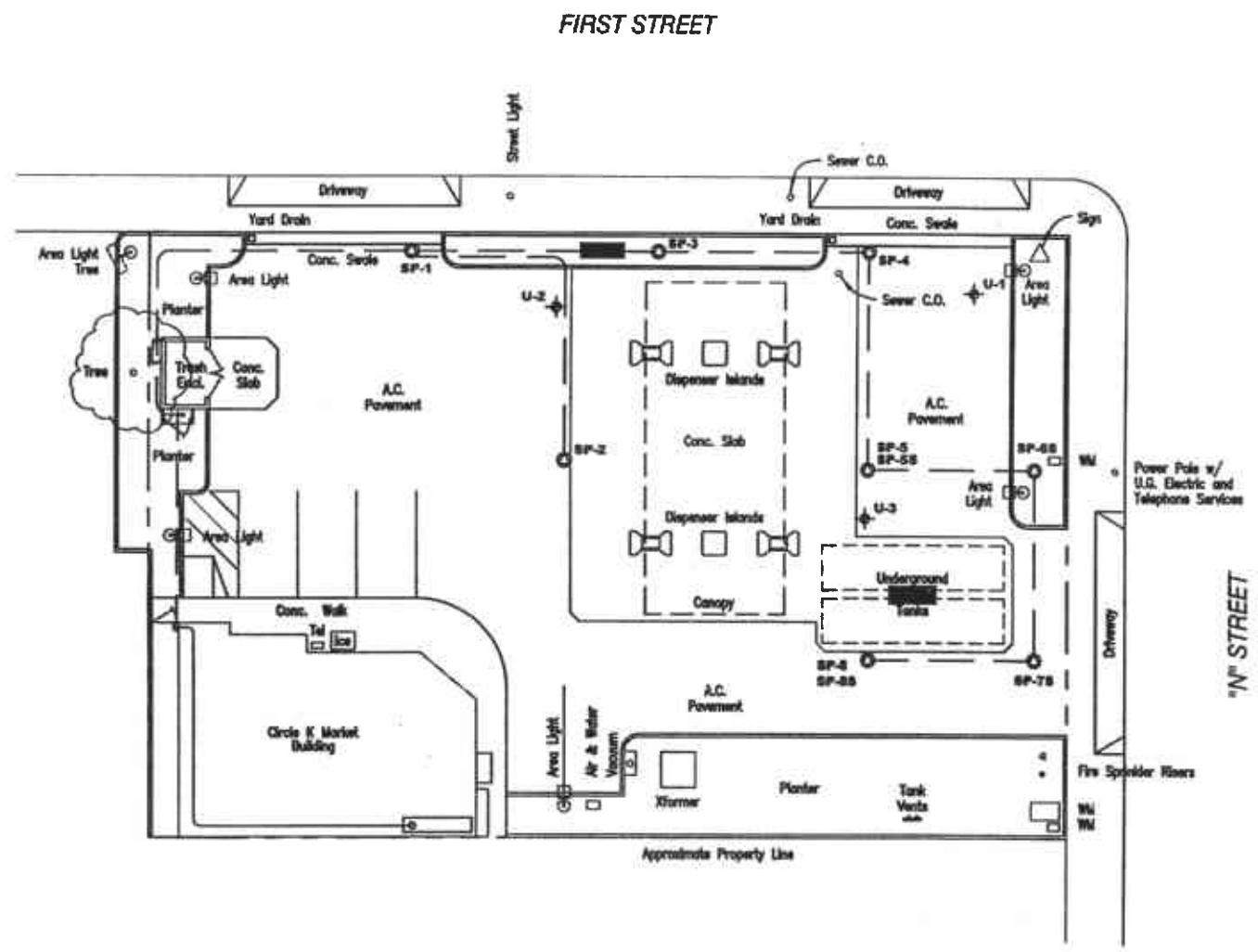
**FIGURE 1**  
**SITE VICINITY MAP**  
  
 76 STATION 4186  
 1771 FIRST STREET  
 LIVERMORE, CALIFORNIA






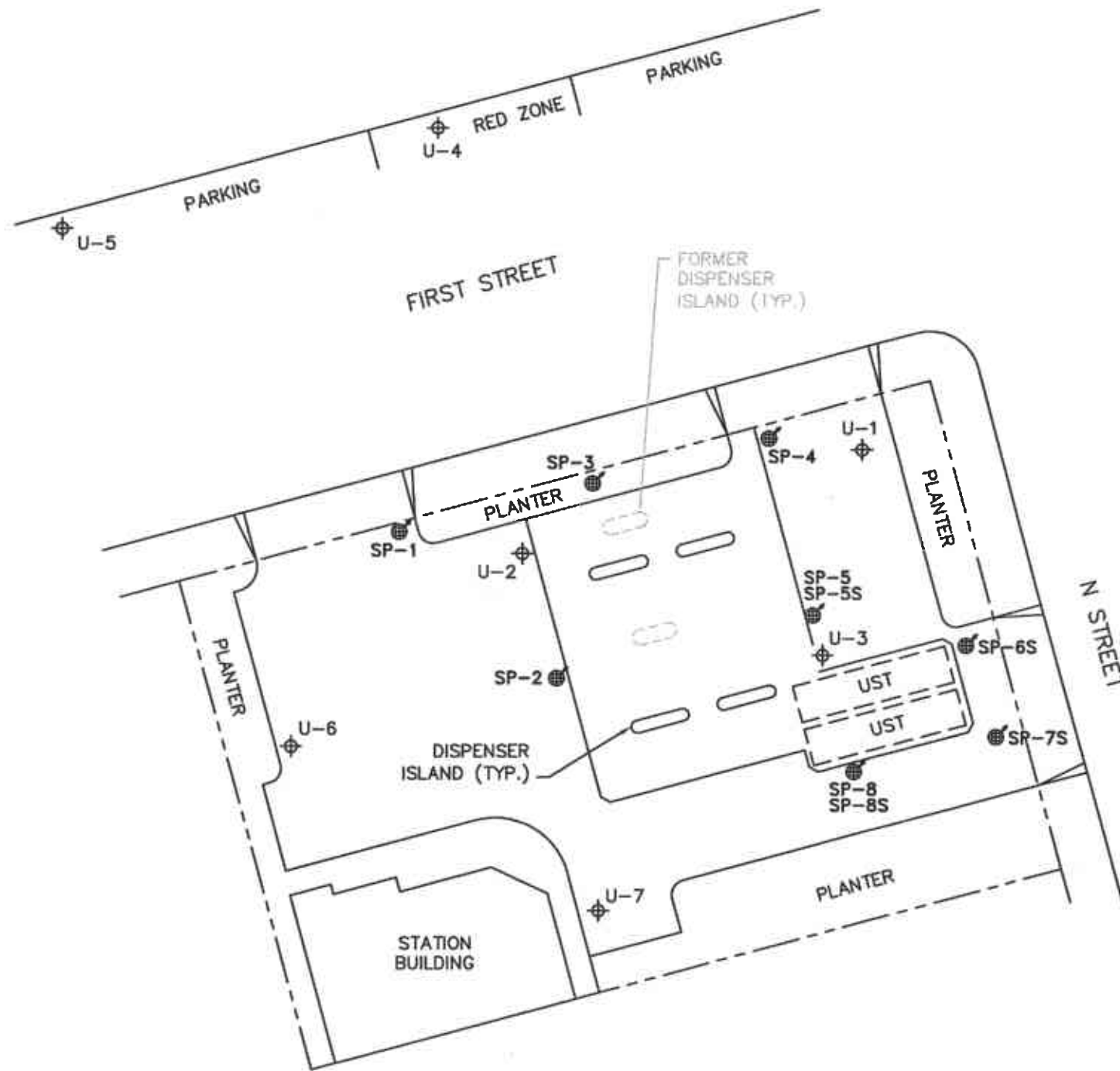
**LEGEND**

- ⊕ GROUNDWATER MONITORING WELL
- ⊙ OZONE SPARGE POINT
- UNDERGROUND OZONE SPARGE LINE



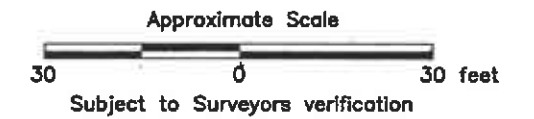
REFERENCE: THIS FIGURE IS BASED ON A 'SITE PLAN' PROVIDED BY GETTLER-RYAN INC., DATED JULY 2001, AND IS INTENDED FOR ILLUSTRATION ONLY.

DRAWN BY: DWR CHECKED: AD APPROVED: AD DATE: 4/2/04 JOB NO.: 77CP.60004.01.4188 CAD FILE: CP-SITEPLAN	PREPARED BY:  <b>SECOR</b> 3017 KILGORE ROAD, SUITE 100 RANCHO CORDOVA, CA 95670	PREPARED FOR: CONOCOPHILLIPS STATION NO. 4188  1771 FIRST STREET LIVERMORE, CALIFORNIA	FIGURE 1  SITE PLAN
--	---	---	---------------------------



**LEGEND**

- APPROXIMATE PROPERTY LINE
- U-7 ⊕ GROUNDWATER MONITOR WELL
- SP-1 ⊕ OZONE SPARGE POINT



BASE MAP REFERENCE:  
 MODIFIED FROM SITE PLAN SUPPLIED BY  
 MILLER BROOKS, ENVIRONMENTAL, INC.



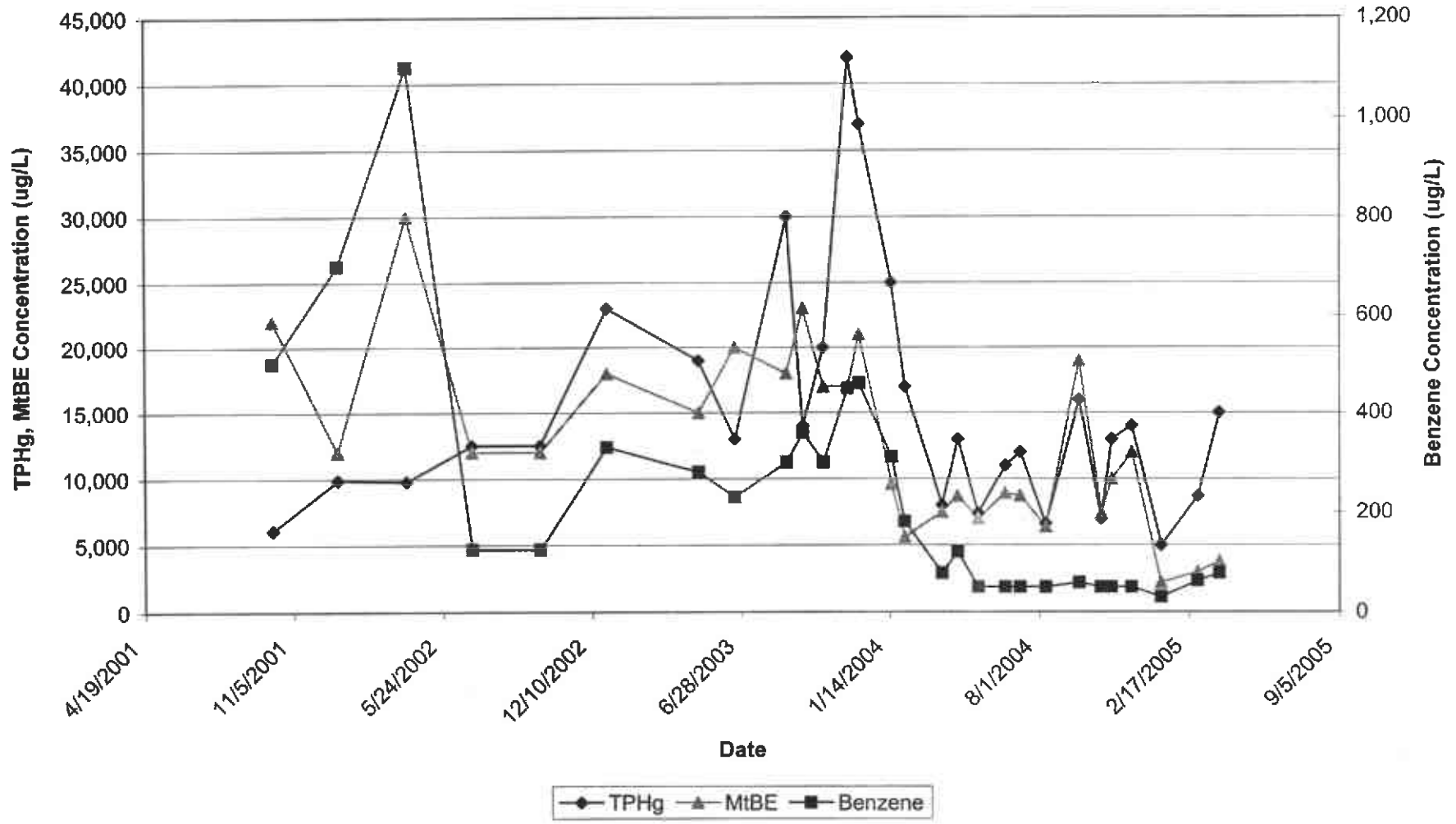
6602 Owens Drive, Suite 100  
 Pleasanton, CA 94588  
 (925) 460-5300

SCALE AS SHOWN	DRAWING DATE 04/19/05	ACAD FILE 4186-site plan
-------------------	--------------------------	-----------------------------

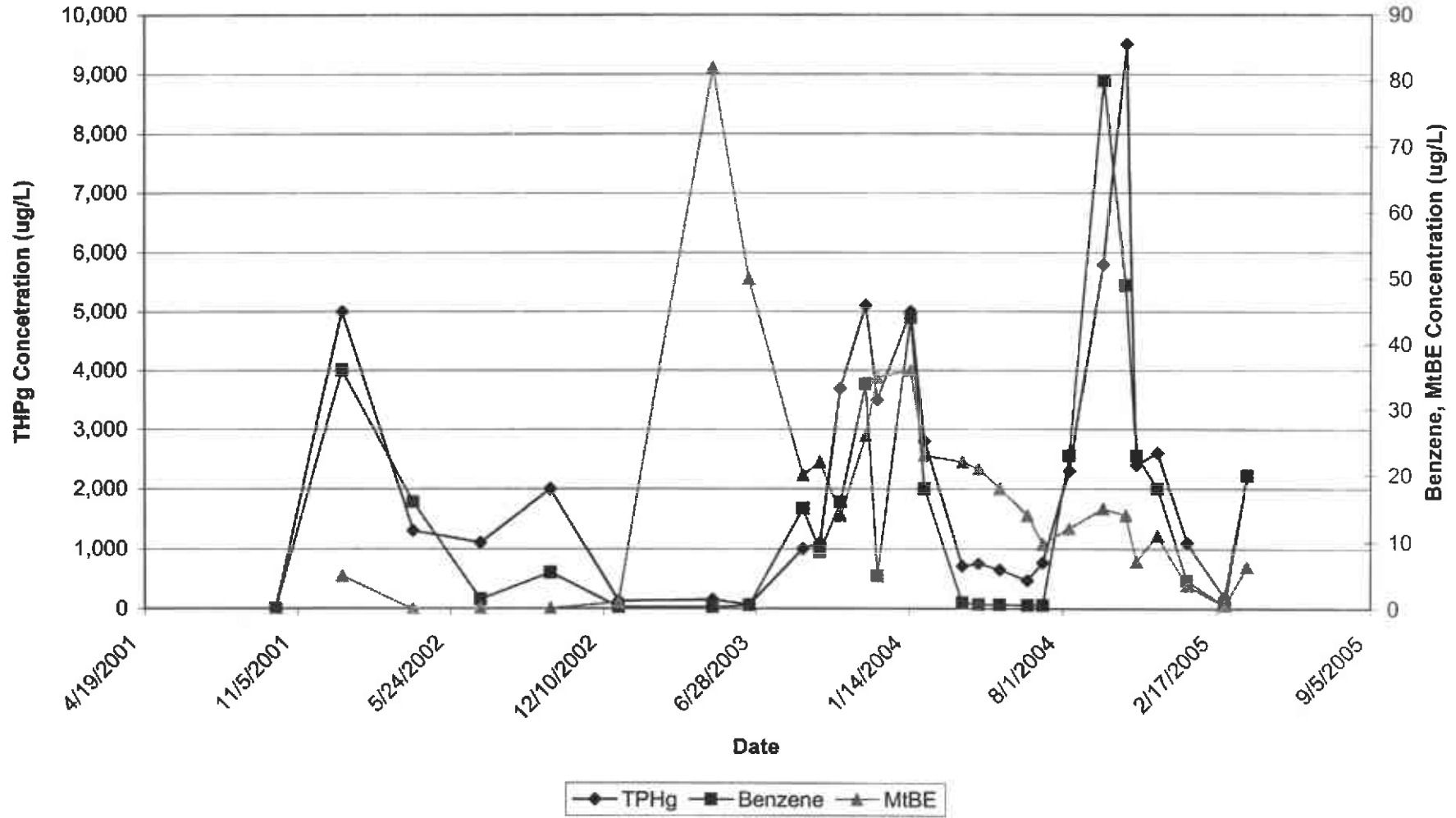
**SITE MAP**

CLIENT	CONOCOPHILLIPS	PM	DAE
LOCATION	76 STATION 4186 1771 FIRST STREET LIVERMORE, CALIFORNIA	PE	DA
DESIGNED	DRAWN BY: EC	PROJECT NO. 75.75118.1237	FIGURE 2

**Figure 2**  
**U-3 TPHg, Benzene, and MtBE Groundwater Concentrations**  
 76 Service Station No. 4186  
 1771 First Street, Livermore, California



**Figure 3**  
**U-6 TPHg, Benzene, and MtBE Groundwater Concentrations**  
 76 Service Station No. 4186  
 171 First Street, Livermore, California



**Table 1**  
**Ozone Injection - System Operation Data**  
 76 Service Station No. 4186  
 1771 First Street, Livermore, California

Date	Notes	OZONE SPARGE SYSTEM					OZ-1	OZ-2	OZ-3	OZ-4	OZ-5	OZ-6	OZ-7	OZ-8	OZ-9	OZ-10
		System Status on Arrival (On/Off)	System Status on Deprature (On/Off)	Hourmeter Reading	Periodic Online Factor	Cummulative Online Factor	Pressure (psi)	Pressure (psi)	Pressure (psi)	Pressure (psi)	Pressure (psi)	Pressure (psi)	Pressure (psi)	Pressure (psi)	Pressure (psi)	Pressure (psi)
06/18/03		On	On	6997.92	--	--	30	24	22	26	33	28	30	32	35	29
07/30/03		On	On	NA	--	--	40	35	42	38	36	39	22	20	28	45
08/28/03		Off	On	7127.87	0.09	0.09	36	48	22	42	37	33	35	40	60	35
09/18/03		On	On	7131.66	0.01	0.07	35.2	36.1	23.7	38.0	34.9	31.1	34.8	38.0	49.3	32.2
10/16/03		On	On	7148.57	0.03	0.06	35.0	40.0	24.2	38.2	18.5	31.4	35.1	36.6	45.8	34
11/18/03		On	Off	7152.34	0.01	0.05	37.0	36.5	28.0	35.0	18.0	33.0	38.0	19.0	52.0	35.0
12/03/03		Off	On	7153.15	0.00	0.04	38.0	38.2	26.5	39.2	40.9	33.8	39.1	40.0	48.2	36.8
01/16/04		Off	--	7409.58	0.37	0.11	44.0	48.0	27.5	48.0	39.0	37.0	--	43.0	54.0	40.0
02/05/04	a	Off	Off	7541.66	0.10	0.11	40.0	38.5	--	--	--	--	--	--	--	--
02/17/04		Off	On	7542.14	0.00	0.11	39.0	38.5	26.5	38.5	38.0	37.0	39.2	40.0	53.0	35.8
03/24/04	b	Off	On	7937.07	0.52	0.16	42.0	38.2	27.5	42.0	38.0	38.0	39.7	41.5	60.0	36.0
04/07/04		Off	On	8008.40	0.24	0.16	--	--	--	--	--	--	--	--	--	--
04/09/04		On	On	8047.53	0.93	0.17	--	--	--	--	--	--	--	--	--	--
04/14/04		Off	On	8053.63	0.06	0.17	40.8	38.3	27.2	41.2	37.8	37.0	37.1	40.4	60.0	36.1
04/16/04		On	On	8088.36	0.83	0.17	--	--	--	--	--	--	--	--	--	--
04/20/04	c	On	Off	8167.64	0.94	0.18	--	--	--	--	--	--	--	--	--	--
04/21/04		Off	On	8167.78	0.01	0.18	38.6	35.9	27.2	41.2	37.8	36.1	37.1	40.7	60.0	36.2
04/23/04		On	On	8204.68	0.88	0.19	37.9	34.0	29.1	34.8	35.2	35.2	36.3	25.8	60.0	34.5
05/11/04	b	Off	On	8253.45	0.13	0.18	40.8	45.3	27.0	40.2	24.8	36.2	25.0	23.0	66.3	35.8
05/13/04		On	On	8291.64	0.91	0.19	--	--	--	--	--	--	--	--	--	--
05/21/04		On	On	8441.19	0.89	0.20	37.7	35.2	27.5	35.0	25.2	34.9	24.8	23.6	60.0	36.8
06/16/04	b	Off	On	8505.37	0.12	0.20	41.2	41.5	27.8	43.0	24.8	37.2	25.8	24.5	60.0	37.6
07/06/04	b,d	Off	On	8554.82	0.13	0.19	40	44	27	40	24	36	24	24	Off	36
08/08/04	b,d,e	Off	On	9002.21	0.70	0.23	40	Off	28	44	23	36	26	24	Off	36
09/23/04	b,d,e	Off	On	9012.63	0.01	0.21	39	Off	29	43	24	35	25	24	Off	34
10/22/04	b,d,e	Off	On	9164.90	0.28	0.22	31	Off	21	34	18	28	19	16	Off	28
11/05/04	f	Off	Off	9165.08	0.00	0.21	30	Off	20	31	18	29	19	16	Off	26
12/02/04	g	Off	Off	9165.08	0.00	0.20	--	--	--	--	--	--	--	--	--	--
01/10/05	h	Off	Off	9165.15	0.00	0.19	--	--	--	--	--	--	--	--	--	--
02/28/05	i,d	Off	On	9165.26	0.00	0.17	41	44	27	45	23	38	24	22	Off	36
03/29/05	b	Off	On	9171.71	0.01	0.16	42	46	27	46	22	39	24	22	Off	36
Spurge time per cycle (min)							7	7	7	7	7	7	7	7	7	7

Reporting Period: First Quarter 2005 (12/02/04 to 03/29/05)

Total Hours Operational: 9,172

Total Pounds Ozone Injected: 83

Period Hours Operational: 7

Period Percent Operational: 00%

Period Pounds Ozone Injected: 0.1

**Definitions:**

psi Pounds per square inch  
 -- Data not available  
 NA Not applicable

**Notes:**

- System cycles program 18 times per day, for 87.5% utilization
- a = GFI switch would not reset.
- b = System's 16amp breaker was tripped
- c =installing Generator
- d = OZ-9 offline due to high pressure
- e = OZ-2 offline due to leaking check valve
- f = System shutdown due to ozone sensor switch.
- g = System off due to leaking compressor, no readings.
- h = Compressor not in panel, being repaired / replaced.
- i = Reinstalled compressor after installing new piston rebuild kit & new check valve on line # 2.

**Table 2**  
**Ozone Injection - Groundwater Monitoring Data**  
 76 Service Station No. 4186  
 1771 First Street, Livermore, California

Date	Notes	Monitoring Well: U-3								Monitoring Well: U-6							
		ORP (mV)	DO (mg/l)	TPHg (µg/L)	Benzene (µg/L)	Toluene (µg/L)	Ethylbenzene (µg/L)	Xylenes (total) (µg/L)	MtBE (µg/L)	ORP (mV)	DO (mg/l)	TPHg (µg/L)	Benzene (µg/L)	Toluene (µg/L)	Ethylbenzene (µg/L)	Xylenes (total) (µg/L)	MtBE (µg/L)
10/8/2001	a	NM	NM	6100	500	--	--	--	22,000	NM	NM	--	--	--	--	--	--
1/3/2002	a	NM	NM	9900	700	--	--	--	12,000	NM	NM	5,000	36	--	--	--	5.0
4/5/2002	a	NM	NM	9800	1,100	--	--	--	30,000	NM	NM	1,300	16	--	--	--	12.5
7/2/2002	a	NM	NM	12500	125	--	--	--	12,000	NM	NM	1,100	1.4	--	--	--	0.94
10/1/2002	a	NM	NM	12500	125	--	--	--	12,000	NM	NM	2,000	5.4	--	--	--	2.6
12/30/2002	a	NM	NM	23000	330	--	--	--	18,000	NM	NM	130	0.25	--	--	--	1.0
5/2/2003	a	NM	NM	19000	280	--	--	--	15,000	NM	NM	150	0.25	--	--	--	82
6/19/2003	a	NM	NM	13,000	230	<100	220	1,600	20,000	NM	NM	68	<0.50	<0.50	<0.50	<1.0	50
8/28/2003	a	NM	NM	30,000	300	<100	1,000	1,600	18,000	NM	NM	1,000	15	<1.0	76	11	20
9/19/2003		NM	NM	14,000	360	120	340	2,400	23,000	NM	NM	1,100	9	<2.5	25	<5.0	22
10/16/2003		NM	NM	20,000	300	93	250	1,800	17,000	NM	NM	3,700	16	<2.5	90	29	14
11/18/2003		NM	NM	42,000	450	140	1,500	5,100	17,000	NM	NM	5,100	34	2.8	190	150	26
12/3/2003		NM	NM	37,000	460	100	1,500	5,800	21,000	NM	NM	3,500	<5.0	<5.0	8.6	<10	35
1/16/2004		NM	NM	25,000	310	<100	110	2,900	9,600	NM	NM	5,000	44	5.6	100	52	36
2/3/2004		NM	NM	17,000	180	<20	670	1,900	5,600	NM	NM	2,800	18	<5.0	49	12	23
3/24/2004	b	-58	NM	8,000	78	<25	340	1,200	7,500	78	NM	710	0.92	<0.50	0.83	<1.0	22
4/14/2004		-4	NM	13,000	120	<50	470	1,400	8,700	37	NM	750	0.64	<0.50	<0.50	<1.0	21
5/11/2004		-79	NM	7,400	<50	<50	170	450	7,000	-40	NM	650	0.58	<0.50	0.95	<1.0	18
6/16/2004		-81	1.42	11,000	<50	<50	190	450	8,900	-51	1.35	470	<0.50	<0.50	<0.50	<1.0	14
7/6/2004	b	-54	5.81	12,000	<50	<50	290	550	8,700	-77	3.01	770	<0.50	<0.50	<0.50	<1.0	9.7
8/9/2004		-64	5.80	6,600	<50	<50	85	370	6,400	-73	5.81	2,300	23	3.0	72	54	12
9/23/2004		-64	c	16,000	59	<50	290	970	19,000	-74	c	5,800	80	<2.5	250	19	15
10/22/2004		-51	3.20	7,000	50	<25	210	270	7,400	-76	1.46	9,500	49	<5.0	92	<10	14
11/5/2004		-60	2.38	13,000	<50	<50	190	370	10,000	-56	2.88	2,400	23	0.75	42	1.5	7.2
12/2/2004		-57	5.73	14,000	<50	<50	290	160	12,000	-60	4.58	2,600	18	0.70	45	1.3	11
1/10/2005		7	3.61	<5,000	30	<0.50	3.8	180	2,200	-18	1.95	1,100	4.3	<0.50	12	2.5	3.6
2/28/2005	e	-55	5.09	8,700	62	<13	260	580	3,000	165	5.41	200	<0.50	<0.50	<0.50	<1.0	<0.50
3/29/2005		-48	6.91	15,000	78	<50	400	1,100	3,800	135	7.34	2,200	20	1.20	85	96	6.4

**Definitions:**

TPHg = Total petroleum hydrocarbons as gasoline  
 MtBE = Methyl tert-butyl ether  
 µg/L = Micrograms per liter  
 ORP = Oxidation Reduction Potential  
 mV = Millivolts  
 DO = Dissolved Oxygen  
 mg/l = Milligrams per liter

**Notes:**

NM Not Measured  
 -- Data not available  
 a Sampled by Gettler-Ryan, Inc.  
 b Hydrocarbon in gasoline range does not match laboratory gasoline standard.  
 c Data not recorded due to instrumentation malfunction  
 d Data not available at time of reporting  
 e Quantity of unknown hydrocarbon(s) in sample based on gasoline in well U-6.

**ATTACHMENT A  
FIELD DATA SHEETS**

Quarterly Remedial Performance Summary  
76 Service Station No. 4186  
1771 First Street  
Livermore, CA  
SECOR Project No.: 77CP.60004.01.4186

Initials	Date	Time In	System Status on Arrival On/Off	Electrical Meter Reading	Ozone Meter		Hourmeter	Ozone Readings			
					Brand	Range		Outside Compound (ppm)	Inside Compound (ppm)	Inside Shed/Panel (ppm)	Secondary Containment (ppm)
J	01/005	11:00	off	N/A			09165.15	No	Readings		
J	022805	08:40	off	N/A	ECOSENSOR	0-10ppm	09165.26	0.02	0.02	0.02	0.02
J	032805	12:40	off	N/A	ECOSENSOR	0-10ppm	09171.71	0.02	0.02	0.02	0.02

Initials	Date	Well Data																			
		OZ-1		OZ-2		OZ-3		OZ-4		OZ-5		OZ-6		OZ-7		OZ-8		OZ-9		OZ-10	
		Press	O <sub>3</sub>	Press	O <sub>3</sub>	Press	O <sub>3</sub>	Press	O <sub>3</sub>	Press	O <sub>3</sub>	Press	O <sub>3</sub>	Press	O <sub>3</sub>	Press	O <sub>3</sub>	Press	O <sub>3</sub>	Press	O <sub>3</sub>
J	01/005	Compressor NOT in panel being repaired/replaced																			
J	022805	41	0.02	44	0.02	27	0.02	45	0.02	23	0.02	38	0.02	24	0.02	22	0.02	off		36	0.02
J	032805	42	0.02	46	0.02	27	0.02	46	0.02	22	0.02	39	0.02	24	0.02	22	0.02	off		35	0.02

Units:      psi    ppm    psi    ppm    psi    ppm    psi    ppm    psi    ppm    psi    ppm    psi    ppm    psi    ppm    psi    ppm    psi    ppm    psi    ppm

Initials	Date	Weather Conditions (estimated)		Temp In Ozone Panel	Monthly Sampling				Time Out	System Status on Departure On/Off	Ozone Badge Color (White/Tan/Brown)
		Wind Dir.	Wind Speed		U-3		U-6				
					ORP (mV)	DO (ug/l)	ORP (mV)	DO (ug/l)			
J	01/005	S	0-5	40		3.61	7.8	1.95	12:00	off	
J	022805	S	0-5	45	-55	5.09	16.5	5.41	11:00	ON	blue
J	032805	S	5-10	55	-48	6.91	13.5	7.34	14:45	ON	blue





Frequency	Item to Inspect or Maintain	Date Performed			
Monthly	Check integrity of all hoses, fittings, piping, and valves	02-28-05	03-29-05		
Monthly	Measure Blower Running Amperage	10.4	9.6		
Monthly	Inspect electrical fittings and tighten as needed	02-28-05	03-29-05		
Monthly	Check controller operation	02-28-05	03-29-05		
As-Needed	Adjust controller program				
Monthly	Gross particle filter-visually inspect	02-28-05			
As-Needed	Gross particle filter-replace as necessary				
Monthly	Check flow and pressure on assemblies (system and wells)	02-28-05	03-29-05		
Monthly	Take ozone readings at compound and well boxes	02-28-05	03-29-05		
Monthly	Check wellhead connections				
Monthly	Check/test all safety override systems				
As-Needed	Sparge blower-repair as necessary				
As-Needed	Sparge blower-replace as necessary				

NOTES AND DESCRIPTION OF ACTIVITIES ON SITE

02-28-05; Reinstalled compressor after installing new piston rebuild kit  
 also installed new check valve on line #2  
 #9 left off pressure too high > 50 doesn't break through

03-29-05; System off; 16amp circuit breaker tripped

**ATTACHMENT B**  
**CERTIFIED LABORATORY ANALYTICAL REPORTS AND**  
**CHAIN-OF-CUSTODY DOCUMENTATION**

Quarterly Remedial Performance Summary

76 Service Station No. 4186

1771 First Street

Livermore, CA

SECOR Project No.: 77CP.60004.01.4186

**SECOR-Sacramento**

January 24, 2005

3017 Kilgore Road, Suite 100  
Rancho Cordova, CA 95670

Attn.: Amy Draffan  
Project: Conoco Philips Site # 4186  
Site: 1771 First St. Livermore, CA

Attached is our report for your samples received on 01/10/2005 14:08  
This report has been reviewed and approved for release. Reproduction of this report  
is permitted only in its entirety.

Please note that any unused portion of the samples will be discarded after  
02/24/2005 unless you have requested otherwise.

We appreciate the opportunity to be of service to you. If you have any questions,  
please call me at (925) 484-1919.

You can also contact me via email. My email address is: [asalimpour@stl-inc.com](mailto:asalimpour@stl-inc.com)

Sincerely,



Afsaneh Salimpour  
Project Manager

**Gas/BTEX/MTBE by 8260B**

SECOR-Sacramento

Attn.: Amy Draffan

3017 Kilgore Road, Suite 100  
Rancho Cordova, CA 95670  
Phone: (916) 861-0400 Fax: (916) 861-0430

Project: Conoco Philips Site # 4186

Received: 01/10/2005 14:08

Site: 1771 First St. Livermore, CA

**Samples Reported**

Sample Name	Date Sampled	Matrix	Lab #
U-3	01/10/2005 11:40	Water	1
U-6	01/10/2005 11:25	Water	2

Severn Trent Laboratories, Inc.

STL San Francisco \* 1220 Quarry Lane, Pleasanton, CA 94566

Tel 925 484 1919 Fax 925 484 1096 \* www.stl-inc.com \* CA DHS ELAP# 2496

01/21/2005 17:16

Gas/BTEX/MTBE by 8260B

SECOR-Sacramento

Attn.: Amy Draffan

3017 Kilgore Road, Suite 100  
Rancho Cordova, CA 95670  
Phone: (916) 861-0400 Fax: (916) 861-0430

Project: Conoco Phillips Site # 4186

Received: 01/10/2005 14:08

Site: 1771 First St. Livermore, CA

Prep(s): 5030B	Test(s): 8260B
Sample ID: U-3	Lab ID: 2005-01-0223 - 1
Sampled: 01/10/2005 11:40	Extracted: 1/13/2005 21:03 1/13/2005 20:31
Matrix: Water	QC Batch#: 2005/01/13-1A.07 2005/01/13-2C.64

Analysis Flag: L2 ( See Legend and Note Section )

Compound	Conc.	RL	Unit	Dilution	Analyzed	Flag
GRO (C6-C12)	ND	5000	ug/L	100.00	01/13/2005 20:31	
Benzene	30	0.50	ug/L	1.00	01/13/2005 21:03	
Toluene	ND	0.50	ug/L	1.00	01/13/2005 21:03	
Ethylbenzene	3.8	0.50	ug/L	1.00	01/13/2005 21:03	
Total xylenes	180	1.0	ug/L	1.00	01/13/2005 21:03	
Methyl tert-butyl ether (MTBE)	2200	50	ug/L	100.00	01/13/2005 20:31	
<b>Surrogate(s)</b>						
1,2-Dichloroethane-d4	103.2	73-130	%	100.00	01/13/2005 20:31	
1,2-Dichloroethane-d4	101.1	73-130	%	1.00	01/13/2005 21:03	
Toluene-d8	97.5	81-114	%	100.00	01/13/2005 20:31	
Toluene-d8	99.5	81-114	%	1.00	01/13/2005 21:03	

Gas/BTEX/MTBE by 8260B

SECOR-Sacramento

Attn.: Amy Draffan

3017 Kilgore Road, Suite 100  
Rancho Cordova, CA 95670  
Phone: (916) 861-0400 Fax: (916) 861-0430

Project: Conoco Philips Site # 4186

Received: 01/10/2005 14:08

Site: 1771 First St. Livermore, CA

Prep(s): 5030B	Test(s): 8260B
Sample ID: U-6	Lab ID: 2005-01-0223 - 2
Sampled: 01/10/2005 11:25	Extracted: 1/13/2005 19:25
Matrix: Water	QC Batch#: 2005/01/13-2C.64

Compound	Conc.	RL	Unit	Dilution	Analyzed	Flag
GRO (C6-C12)	1100	50	ug/L	1.00	01/13/2005 19:25	
Benzene	4.3	0.50	ug/L	1.00	01/13/2005 19:25	
Toluene	ND	0.50	ug/L	1.00	01/13/2005 19:25	
Ethylbenzene	12	0.50	ug/L	1.00	01/13/2005 19:25	
Total xylenes	2.5	1.0	ug/L	1.00	01/13/2005 19:25	
Methyl tert-butyl ether (MTBE)	3.6	0.50	ug/L	1.00	01/13/2005 19:25	
<b>Surrogate(s)</b>						
1,2-Dichloroethane-d4	95.4	73-130	%	1.00	01/13/2005 19:25	
Toluene-d8	101.6	81-114	%	1.00	01/13/2005 19:25	

Severn Trent Laboratories, Inc.

STL San Francisco \* 1220 Quarry Lane, Pleasanton, CA 94566

Tel 925 484 1919 Fax 925 484 1096 \* www.stl-inc.com \* CA DHS ELAP# 2496

01/21/2005 17:16

**Gas/BTEX/MTBE by 8260B**

SECOR-Sacramento

Attn.: Amy Draffan

3017 Kilgore Road, Suite 100  
Rancho Cordova, CA 95670  
Phone: (916) 861-0400 Fax: (916) 861-0430

Project: Conoco Philips Site # 4186

Received: 01/10/2005 14:08

Site: 1771 First St. Livermore, CA

**Batch QC Report**

Prep(s): 5030B

Test(s): 8260B

Method Blank

Water

QC Batch # 2005/01/13-1A.07

MB: 2005/01/13-1A.07-003

Date Extracted: 01/13/2005 15:38

Compound	Conc.	RL	Unit	Analyzed	Flag
Benzene	ND	0.5	ug/L	01/13/2005 15:38	
Toluene	ND	0.5	ug/L	01/13/2005 15:38	
Ethylbenzene	ND	0.5	ug/L	01/13/2005 15:38	
Total xylenes	ND	1.0	ug/L	01/13/2005 15:38	
<b>Surrogates(s)</b>					
1,2-Dichloroethane-d4	96.2	73-130	%	01/13/2005 15:38	
Toluene-d8	101.0	81-114	%	01/13/2005 15:38	

Severn Trent Laboratories, Inc.

STL San Francisco \* 1220 Quarry Lane, Pleasanton, CA 94566

Tel 925 484 1919 Fax 925 484 1096 \* www.stl-inc.com \* CA DHS ELAP# 2496

01/21/2005 17:16

Gas/BTEX/MTBE by 8260B

SECOR-Sacramento

Attn.: Amy Draffan

3017 Kilgore Road, Suite 100  
Rancho Cordova, CA 95670  
Phone: (916) 861-0400 Fax: (916) 861-0430

Project: Conoco Philips Site # 4186

Received: 01/10/2005 14:08

Site: 1771 First St. Livermore, CA

**Batch QC Report**

Prep(s): 5030B

Method Blank

MB: 2005/01/13-2C.64-057

Water

Test(s): 8260B

QC Batch # 2005/01/13-2C.64

Date Extracted: 01/13/2005 18:57

Compound	Conc.	RL	Unit	Analyzed	Flag
GRO (C6-C12)	ND	50	ug/L	01/13/2005 18:57	
Benzene	ND	0.5	ug/L	01/13/2005 18:57	
Toluene	ND	0.5	ug/L	01/13/2005 18:57	
Ethylbenzene	ND	0.5	ug/L	01/13/2005 18:57	
Total xylenes	ND	1.0	ug/L	01/13/2005 18:57	
Methyl tert-butyl ether (MTBE)	ND	0.5	ug/L	01/13/2005 18:57	
<b>Surrogates(s)</b>					
1,2-Dichloroethane-d4	96.6	73-130	%	01/13/2005 18:57	
Toluene-d8	101.4	81-114	%	01/13/2005 18:57	

Severn Trent Laboratories, Inc.

STL San Francisco \* 1220 Quarry Lane, Pleasanton, CA 94566

Tel 925 484 1919 Fax 925 484 1096 \* www.stl-inc.com \* CA DHS ELAP# 2496

01/21/2005 17:16



**Gas/BTEX/MTBE by 8260B**

SECOR-Sacramento

Attn.: Amy Draffan

3017 Kilgore Road, Suite 100  
 Rancho Cordova, CA 95670  
 Phone: (916) 861-0400 Fax: (916) 861-0430

Project: Conoco Philips Site # 4186

Received: 01/10/2005 14:08

Site: 1771 First St. Livermore, CA

**Batch QC Report**

Prep(s): 5030B

Test(s): 8260B

**Laboratory Control Spike**

**Water**

**QC Batch # 2005/01/13-1A.07**

LCS 2005/01/13-1A.07-002

Extracted: 01/13/2005

Analyzed: 01/13/2005 15:07

LCSD

Compound	Conc. ug/L		Exp.Conc.	Recovery %		RPD	Ctrl.Limits %			Flags	
	LCS	LCSD		LCS	LCSD		%	Rec.	RPD	LCS	LCSD
Benzene	24.0		25	96.0			69-129	20			
Toluene	25.2		25	100.8			70-130	20			
<b>Surrogates(s)</b>											
1,2-Dichloroethane-d4	503		500	100.6			73-130				
Toluene-d8	502		500	100.4			81-114				

Severn Trent Laboratories, Inc.

STL San Francisco \* 1220 Quarry Lane, Pleasanton, CA 94566

Tel 925 484 1919 Fax 925 484 1096 \* www.stl-inc.com \* CA DHS ELAP# 2496

01/21/2005 17:16

Gas/BTEX/MTBE by 8260B

SECOR-Sacramento

Attn.: Amy Draffan

3017 Kilgore Road, Suite 100  
Rancho Cordova, CA 95670  
Phone: (916) 861-0400 Fax: (916) 861-0430

Project: Conoco Philips Site # 4186

Received: 01/10/2005 14:08

Site: 1771 First St. Livermore, CA

**Batch QC Report**

Prep(s): 5030B

Test(s): 8260B

**Laboratory Control Spike**

**Water**

**QC Batch # 2005/01/13-2C.64**

LCS 2005/01/13-2C.64-050

Extracted: 01/13/2005

Analyzed: 01/13/2005 17:50

LCSD

Compound	Conc. ug/L		Exp. Conc.	Recovery %		RPD	Ctrl. Limits %		Flags	
	LCS	LCSD		LCS	LCSD		%	Rec.	RPD	LCS
Methyl tert-butyl ether (MTBE)	27.2		25	108.8			65-165	20		
Benzene	26.4		25	105.6			69-129	20		
Toluene	25.5		25	102.0			70-130	20		
<b>Surrogates(s)</b>										
1,2-Dichloroethane-d4	470		500	94.0			73-130			
Toluene-d8	493		500	98.6			81-114			

Severn Trent Laboratories, Inc.

STL San Francisco \* 1220 Quarry Lane, Pleasanton, CA 94566

Tel 925 484 1919 Fax 925 484 1096 \* www.stl-inc.com \* CA DHS ELAP# 2496

01/21/2005 17:16

Gas/BTEX/MTBE by 8260B

SECOR-Sacramento

Attn.: Amy Draffan

3017 Kilgore Road, Suite 100  
Rancho Cordova, CA 95670  
Phone: (916) 861-0400 Fax: (916) 861-0430

Project: Conoco Phillips Site # 4186

Received: 01/10/2005 14:08

Site: 1771 First St. Livermore, CA

**Batch QC Report**

Prep(s): 5030B

Test(s): 8260B

**Matrix Spike ( MS / MSD )**

**Water**

**QC Batch # 2005/01/13-1A.07**

MS/MSD

Lab ID: 2005-01-0194 - 004

MS: 2005/01/13-1A.07-005

Extracted: 01/13/2005

Analyzed: 01/13/2005 16:57

Dilution: 1.00

MSD: 2005/01/13-1A.07-006

Extracted: 01/13/2005

Analyzed: 01/13/2005 17:28

Dilution: 1.00

Compound	Conc. ug/L			Spk.Level ug/L	Recovery %			Limits %		Flags	
	MS	MSD	Sample		MS	MSD	RPD	Rec.	RPD	MS	MSD
Benzene	34.1	32.0	8.96	25	100.6	92.2	8.7	69-129	20		
Toluene	25.3	23.5	ND	25	101.2	94.0	7.4	70-130	20		
<b>Surrogate(s)</b>											
1,2-Dichloroethane-d4	521	520		500	104.2	104.0		73-130			
Toluene-d8	496	497		500	99.2	99.4		81-114			

Severn Trent Laboratories, Inc.

STL San Francisco \* 1220 Quarry Lane, Pleasanton, CA 94566

Tel 925 484 1919 Fax 925 484 1096 \* www.stl-inc.com \* CA DHS ELAP# 2496

01/21/2005 17:16

**Gas/BTEX/MTBE by 8260B**

SECOR-Sacramento

Attn.: Amy Draffan

3017 Kilgore Road, Suite 100  
Rancho Cordova, CA 95670  
Phone: (916) 861-0400 Fax: (916) 861-0430

Project: Conoco Philips Site # 4186

Received: 01/10/2005 14:08

Site: 1771 First St. Livermore, CA

**Batch QC Report**

Prep(s): 5030B

Test(s): 8260B

**Matrix Spike ( MS / MSD )**

**Water**

**QC Batch # 2005/01/13-2C.64**

U-6 >> MS

Lab ID: 2005-01-0223 - 002

MS: 2005/01/13-2C.64-047

Extracted: 01/13/2005

Analyzed: 01/13/2005 19:47

Dilution: 1.00

MSD: 2005/01/13-2C.64-009

Extracted: 01/13/2005

Analyzed: 01/13/2005 20:09

Dilution: 1.00

Compound	Conc. ug/L			Spk.Level ug/L	Recovery %			Limits %		Flags	
	MS	MSD	Sample		MS	MSD	RPD	Rec.	RPD	MS	MSD
Methyl tert-butyl ether	31.9	29.6	3.64	25	113.0	103.8	8.5	65-165	20		
Benzene	32.6	31.2	4.31	25	113.2	107.6	5.1	69-129	20		
Toluene	26.8	27.2	ND	25	107.2	108.8	1.5	70-130	20		
<b>Surrogate(s)</b>											
1,2-Dichloroethane-d4	490	491		500	98.0	98.2		73-130			
Toluene-d8	512	526		500	102.4	105.2		81-114			

Severn Trent Laboratories, Inc.

STL San Francisco \* 1220 Quarry Lane, Pleasanton, CA 94566

Tel 925 484 1919 Fax 925 484 1096 \* www.stl-inc.com \* CA DHS ELAP# 2496

01/21/2005 17:16

Gas/BTEX/MTBE by 8260B

SECOR-Sacramento

Attn.: Amy Draffan

3017 Kilgore Road, Suite 100  
Rancho Cordova, CA 95670  
Phone: (916) 861-0400 Fax: (916) 861-0430

Project: Conoco Philips Site # 4186

Received: 01/10/2005 14:08

Site: 1771 First St. Livermore, CA

---

**Legend and Notes**

---

**Analysis Flag**

L2

Reporting limits were raised due to high level of analyte present  
in the sample.

SEVERN  
ATWENTY

STL

STL San Francisco

### Sample Receipt Checklist

Submission #: 2005- 01-0225

Checklist completed by: (initials) HN Date: 01/10 /05

Courier name:  STL San Francisco  Client \_\_\_\_\_

Custody seals intact on shipping container/samples

Yes \_\_\_\_\_ No \_\_\_\_\_ Not Present

Chain of custody present?

Yes \_\_\_\_\_ No

Chain of custody signed when relinquished and received?

Yes  No \_\_\_\_\_

Chain of custody agrees with sample labels?

Yes  No \_\_\_\_\_

Samples in proper container/bottle?

Yes  No \_\_\_\_\_

Sample containers intact?

Yes  No \_\_\_\_\_

Sufficient sample volume for indicated test?

Yes  No \_\_\_\_\_

All samples received within holding time?

Yes  No \_\_\_\_\_

Container/Temp Blank temperature in compliance ( $4^{\circ}\text{C} \pm 2$ )?

Temp: 4 °C Yes  No \_\_\_\_\_

Potential reason for  $> 6^{\circ}\text{C}$  - Ice melted  Ice in bags  Not enough ice  Not enough blue ice  Samples in boxes

Sampled < 4hr. ago?  Ice not required (e.g. air or bulk sample)

Ice Present Yes  No \_\_\_\_\_

Water - VOA vials have zero headspace?

No VOA vials submitted Yes  No \_\_\_\_\_

(if bubble is present, refer to approximate bubble size and itemize in comments as S (small -  $\text{O}$ ), M (medium -  $\text{O}$ ) or L (large -  $\text{O}$ ))

Water - pH acceptable upon receipt?  Yes  No

pH adjusted - Preservative used:   $\text{HNO}_3$    $\text{HCl}$    $\text{H}_2\text{SO}_4$    $\text{NaOH}$    $\text{ZnOAc}$  - Lot #(s) \_\_\_\_\_

For any item check-listed "No", provided detail of discrepancy in comment section below:

Comments:

### Project Management [Routing for instruction of indicated discrepancy(ies)]

Project Manager: (initials) \_\_\_\_\_ Date: \_\_\_\_\_ / \_\_\_\_\_ /05

Client contacted:  Yes  No

Summary of discussion:

Corrective Action (per PM/Client):

STL-San Francisco

1220 Quarry Lane

Pleasanton, CA 94568

(925) 484-1919 (925) 484-1098 fax

# ConocoPhillips Chain Of Custody Record

99374

ConocoPhillips Site Manager:	ConocoPhillips Work Order Number:	DATE: 01-10-05
INVOICE REMITTANCE ADDRESS:	1237 SEC 550	PAGE: 1 of 1
2005-01-0223	CONOCOPHILLIPS Attn: Dee Hutchinson 3611 South Harbor, Suite 200 Santa Ana, CA 92704	

SAMPLING COMPANY: SECOR International Inc	VOID Value ID:	CONOCOPHILLIPS SITE NUMBER: 4186	GLOBAL ID NO.: T0600101493
ADDRESS: 3017 Kilgore Rd Suite 100, Rancho Cordova, CA 95670	SITE ADDRESS (Street and City): 1771 First St., Livermore, CA	CONOCOPHILLIPS SITE MANAGER:	
PROJECT CONTACT (Handcopy or PDF Report to): Amy Duffin	LDI DELIVERABLE TO (RP or Designee):	PHONE NO.:	E-MAIL:
TELEPHONE: (916) 861-0400	FAX: (916) 861-0430	LAB USE ONLY	
SAMPLER NAME(S) (Print): James Patton	CONSULTANT PROJECT NUMBER:		

REQUESTED ANALYSES

TURNAROUND TIME (CALENDAR DAYS):  
 14 DAYS  7 DAYS  72 HOURS  48 HOURS  24 HOURS  LESS THAN 24 HOURS

SPECIAL INSTRUCTIONS OR NOTES: CHECK BOX IF EDD IS NEEDED

Field Point name only required if different from Sample ID

LAB USE ONLY	Sample Identification/Field Point		SAMPLING		MATRIX	NO. OF CONT.	8015M - TPHd Extractable	8260B - TPHg/BTEX/MGE	8260B - TPHg/BTEX/8	8260B - TPHg/BTEX/8 Oxygenates	8260B - TPHg/BTEX/8 Oxygenates + methanol (8015M)	8260B - Full Scan VOCs (does not include oxygenates)	8279C - Semi-Volatiles	8015M/8021B - TPHg/BTEX/MGE	Lead	Total	DSTLC	DTCLP	FIELD NOTES: Container/Preservative or PID Readings or Laboratory Notes	TEMPERATURE ON RECEIPT C	
	Name*	DATE	TIME																		
	U-3	01/05	11:40	W	3		X														6
	U-6	01/05	11:25	W	3		X														

Requested by (Signature): 	Received by (Signature): 	Date: 1/10/05	Time: 14:08
Requested by (Signature):	Received by (Signature):	Date:	Time:
Requested by (Signature):	Received by (Signature):	Date:	Time:

**SECOR-Sacramento**

March 17, 2005

3017 Kilgore Road, Suite 100  
Rancho Cordova, CA 95670

Attn.: Amy Draffan

Project#: 77CP.60004.01.4186

Project: Conoco Philips Site # 4186

Site: 1771 First Street, Livermore, California

Attached is our report for your samples received on 03/02/2005 16:00

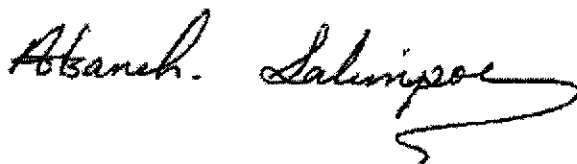
This report has been reviewed and approved for release. Reproduction of this report is permitted only in its entirety.

Please note that any unused portion of the samples will be discarded after 04/16/2005 unless you have requested otherwise.

We appreciate the opportunity to be of service to you. If you have any questions, please call me at (925) 484-1919.

You can also contact me via email. My email address is: [asalimpour@stl-inc.com](mailto:asalimpour@stl-inc.com)

Sincerely,



Afsaneh Salimpour  
Project Manager

Severn Trent Laboratories, Inc.

STL San Francisco \* 1220 Quarry Lane, Pleasanton, CA 94566

Tel 925 484 1919 Fax 925 484 1096 \* [www.stl-inc.com](http://www.stl-inc.com) \* CA DHS ELAP# 2496



## Gas/BTEX/MTBE by 8260B

SECOR-Sacramento

Attn.: Amy Draffan

3017 Kilgore Road, Suite 100  
Rancho Cordova, CA 95670  
Phone: (916) 861-0400 Fax: (916) 861-0430Project: 77CP.60004.01.4186  
Conoco Philips Site # 4186

Received: 03/02/2005 16:00

Site: 1771 First Street, Livermore, California

## Samples Reported

Sample Name	Date Sampled	Matrix	Lab #
U-3	02/28/2005 09:10	Water	1
U-6	02/28/2005 08:55	Water	2

## Gas/BTEX/MTBE by 8260B

SECOR-Sacramento

Attn.: Amy Draffan

3017 Kilgore Road, Suite 100  
Rancho Cordova, CA 95670  
Phone: (916) 861-0400 Fax: (916) 861-0430Project: 77CP.60004.01.4186  
Conoco Philips Site # 4186

Received: 03/02/2005 16:00

Site: 1771 First Street, Livermore, California

---

Prep(s): 5030B Test(s): 8260B  
Sample ID: U-3 Lab ID: 2005-03-0102 - 1  
Sampled: 02/28/2005 09:10 Extracted: 3/14/2005 20:36  
Matrix: Water QC Batch#: 2005/03/14-2C.62  
Analysis Flag: L2 ( See Legend and Note Section )

Compound	Conc.	RL	Unit	Dilution	Analyzed	Flag
GRO (C6-C12)	8700	1300	ug/L	25.00	03/14/2005 20:36	
Benzene	62	13	ug/L	25.00	03/14/2005 20:36	
Toluene	ND	13	ug/L	25.00	03/14/2005 20:36	
Ethylbenzene	260	13	ug/L	25.00	03/14/2005 20:36	
Total xylenes	580	25	ug/L	25.00	03/14/2005 20:36	
Methyl tert-butyl ether (MTBE)	3000	13	ug/L	25.00	03/14/2005 20:36	
<b>Surrogate(s)</b>						
1,2-Dichloroethane-d4	119.8	73-130	%	25.00	03/14/2005 20:36	
Toluene-d8	111.5	81-114	%	25.00	03/14/2005 20:36	

Gas/BTEX/MTBE by 8260B

SECOR-Sacramento

Attn.: Amy Draffan

3017 Kilgore Road, Suite 100  
Rancho Cordova, CA 95670  
Phone: (916) 861-0400 Fax: (916) 861-0430

Project: 77CP.60004.01.4186  
Conoco Philips Site # 4186

Received: 03/02/2005 16:00

Site: 1771 First Street, Livermore, California

Prep(s): 5030B Test(s): 8260B  
Sample ID: U-6 Lab ID: 2005-03-0102 - 2  
Sampled: 02/28/2005 08:55 Extracted: 3/14/2005 09:26  
Matrix: Water QC Batch#: 2005/03/14-1B.68

Compound	Conc.	RL	Unit	Dilution	Analyzed	Flag
GRO (C6-C12)	200	50	ug/L	1.00	03/14/2005 09:26	Q1
Benzene	ND	0.50	ug/L	1.00	03/14/2005 09:26	
Toluene	ND	0.50	ug/L	1.00	03/14/2005 09:26	
Ethylbenzene	ND	0.50	ug/L	1.00	03/14/2005 09:26	
Total xylenes	ND	1.0	ug/L	1.00	03/14/2005 09:26	
Methyl tert-butyl ether (MTBE)	ND	0.50	ug/L	1.00	03/14/2005 09:26	
<b>Surrogate(s)</b>						
1,2-Dichloroethane-d4	88.9	73-130	%	1.00	03/14/2005 09:26	
Toluene-d8	96.1	81-114	%	1.00	03/14/2005 09:26	

Severn Trent Laboratories, Inc.

STL San Francisco \* 1220 Quarry Lane, Pleasanton, CA 94566

Tel 925 484 1919 Fax 925 484 1096 \* www.stl-inc.com \* CA DHS ELAP# 2496

03/17/2005 12:56

Page 3 of 10

**Gas/BTEX/MTBE by 8260B**

SECOR-Sacramento

Attn.: Amy Draffan

3017 Kilgore Road, Suite 100  
Rancho Cordova, CA 95670  
Phone: (916) 861-0400 Fax: (916) 861-0430

Project: 77CP.60004.01.4186  
Conoco Philips Site # 4186

Received: 03/02/2005 16:00

Site: 1771 First Street, Livermore, California

**Batch QC Report**

Prep(s): 5030B

**Method Blank**

MB: 2005/03/14-1B.68-033

**Water**

Test(s): 8260B

**QC Batch # 2005/03/14-1B.68**

Date Extracted: 03/14/2005 07:33

Compound	Conc.	RL	Unit	Analyzed	Flag
GRO (C6-C12)	ND	50	ug/L	03/14/2005 07:33	
Methyl tert-butyl ether (MTBE)	ND	0.5	ug/L	03/14/2005 07:33	
Benzene	ND	0.5	ug/L	03/14/2005 07:33	
Toluene	ND	0.5	ug/L	03/14/2005 07:33	
Ethylbenzene	ND	0.5	ug/L	03/14/2005 07:33	
Total xylenes	ND	1.0	ug/L	03/14/2005 07:33	
<b>Surrogates(s)</b>					
1,2-Dichloroethane-d4	92.4	73-130	%	03/14/2005 07:33	
Toluene-d8	98.2	81-114	%	03/14/2005 07:33	

Severn Trent Laboratories, Inc.

STL San Francisco \* 1220 Quarry Lane, Pleasanton, CA 94566

Tel 925 484 1919 Fax 925 484 1096 \* www.stl-inc.com \* CA DHS ELAP# 2496

03/17/2005 12:56

**Gas/BTEX/MTBE by 8260B**

SECOR-Sacramento

Attn.: Amy Draffan

3017 Kilgore Road, Suite 100  
 Rancho Cordova, CA 95670  
 Phone: (916) 861-0400 Fax: (916) 861-0430

Project: 77CP.60004.01.4186  
 Conoco Philips Site # 4186

Received: 03/02/2005 16:00

Site: 1771 First Street, Livermore, California

**Batch QC Report**

Prep(s): 5030B

Method Blank

MB: 2005/03/14-2C.62-042

Water

Test(s): 8260B

QC Batch # 2005/03/14-2C.62

Date Extracted: 03/14/2005 18:42

Compound	Conc.	RL	Unit	Analyzed	Flag
GRO (C6-C12)	ND	50	ug/L	03/14/2005 18:42	
Methyl tert-butyl ether (MTBE)	ND	0.5	ug/L	03/14/2005 18:42	
Benzene	ND	0.5	ug/L	03/14/2005 18:42	
Toluene	ND	0.5	ug/L	03/14/2005 18:42	
Ethylbenzene	ND	0.5	ug/L	03/14/2005 18:42	
Total xylenes	ND	1.0	ug/L	03/14/2005 18:42	
<b>Surrogates(s)</b>					
1,2-Dichloroethane-d4	112.0	73-130	%	03/14/2005 18:42	
Toluene-d8	116.6	81-114	%	03/14/2005 18:42	S7

Gas/BTEX/MTBE by 8260B

SECOR-Sacramento

Attn.: Amy Draffan

3017 Kilgore Road, Suite 100  
Rancho Cordova, CA 95670  
Phone: (916) 861-0400 Fax: (916) 861-0430

Project: 77CP.60004.01.4186  
Conoco Philips Site # 4186

Received: 03/02/2005 16:00

Site: 1771 First Street, Livermore, California

**Batch QC Report**

Prep(s): 5030B

Test(s): 8260B

Laboratory Control Spike

Water

QC Batch # 2005/03/14-1B.68

LCS 2005/03/14-1B.68-009

Extracted: 03/14/2005

Analyzed: 03/14/2005 08:09

LCSD

Compound	Conc. ug/L		Exp.Conc.	Recovery %		RPD	Ctrl.Limits %		Flags	
	LCS	LCSD		LCS	LCSD		%	Rec.	RPD	LCS
Methyl tert-butyl ether (MTBE)	23.3		25	93.2			65-165	20		
Benzene	24.8		25	99.2			69-129	20		
Toluene	24.9		25	99.6			70-130	20		
<b>Surrogates(s)</b>										
1,2-Dichloroethane-d4	397		500	79.4			73-130			
Toluene-d8	490		500	98.0			81-114			

Severn Trent Laboratories, Inc.

STL San Francisco \* 1220 Quarry Lane, Pleasanton, CA 94566

Tel 925 484 1919 Fax 925 484 1096 \* www.stl-inc.com \* CA DHS ELAP# 2496

03/17/2005 12:56

Gas/BTEX/MTBE by 8260B

SECOR-Sacramento

Attn.: Amy Draffan

3017 Kilgore Road, Suite 100  
Rancho Cordova, CA 95670  
Phone: (916) 861-0400 Fax: (916) 861-0430

Project: 77CP.60004.01.4186  
Conoco Philips Site # 4186

Received: 03/02/2005 16:00

Site: 1771 First Street, Livermore, California

**Batch QC Report**

Prep(s): 5030B

Test(s): 8260B

**Laboratory Control Spike**

**Water**

**QC Batch # 2005/03/14-2C.62**

LCS 2005/03/14-2C.62-012

Extracted: 03/14/2005

Analyzed: 03/14/2005 19:12

LCSD

Compound	Conc. ug/L		Exp.Conc.	Recovery %		RPD	Ctrl.Limits %		Flags	
	LCS	LCSD		LCS	LCSD		%	Rec.	RPD	LCS
Methyl tert-butyl ether (MTBE)	30.8		25	123.2			65-165	20		
Benzene	28.5		25	114.0			69-129	20		
Toluene	27.9		25	111.6			70-130	20		
<b>Surrogates(s)</b>										
1,2-Dichloroethane-d4	509		500	101.8			73-130			
Toluene-d8	540		500	108.0			81-114			

Severn Trent Laboratories, Inc.

STL San Francisco \* 1220 Quarry Lane, Pleasanton, CA 94566

Tel 925 484 1919 Fax 925 484 1096 \* www.stl-inc.com \* CA DHS ELAP# 2496

03/17/2005 12:56

**Gas/BTEX/MTBE by 8260B**

SECOR-Sacramento

Attn.: Amy Draffan

3017 Kilgore Road, Suite 100  
Rancho Cordova, CA 95670  
Phone: (916) 861-0400 Fax: (916) 861-0430

Project: 77CP.60004.01.4186  
Conoco Philips Site # 4186

Received: 03/02/2005 16:00

Site: 1771 First Street, Livermore, California

**Batch QC Report**

Prep(s): 5030B

Test(s): 8260B

**Matrix Spike ( MS / MSD )**

**Water**

**QC Batch # 2005/03/14-1B.68**

U-6 >> MS

Lab ID: 2005-03-0102 - 002

MS: 2005/03/14-1B.68-044

Extracted: 03/14/2005

Analyzed: 03/14/2005 09:44

Dilution: 1.00

MSD: 2005/03/14-1B.68-001

Extracted: 03/14/2005

Analyzed: 03/14/2005 10:01

Dilution: 1.00

Compound	Conc. ug/L			Spk.Level ug/L	Recovery %			Limits %		Flags	
	MS	MSD	Sample		MS	MSD	RPD	Rec.	RPD	MS	MSD
Methyl tert-butyl ether	20.9	21.9	ND	25	83.6	87.6	4.7	65-165	20		
Benzene	23.2	23.8	ND	25	92.8	95.2	2.6	69-129	20		
Toluene	24.4	25.0	ND	25	97.6	100.0	2.4	70-130	20		
<b>Surrogate(s)</b>											
1,2-Dichloroethane-d4	384	390		500	76.8	78.0		73-130			
Toluene-d8	492	486		500	98.4	97.2		81-114			

Severn Trent Laboratories, Inc.

STL San Francisco \* 1220 Quarry Lane, Pleasanton, CA 94566

Tel 925 484 1919 Fax 925 484 1096 \* www.stl-inc.com \* CA DHS ELAP# 2496

03/17/2005 12:56



**Gas/BTEX/MTBE by 8260B**

SECOR-Sacramento

Attn.: Amy Draffan

3017 Kilgore Road, Suite 100  
Rancho Cordova, CA 95670  
Phone: (916) 861-0400 Fax: (916) 861-0430

Project: 77CP.60004.01.4186  
Conoco Phillips Site # 4186

Received: 03/02/2005 16:00

Site: 1771 First Street, Livermore, California

**Batch QC Report**

Prep(s): 5030B

Test(s): 8260B

**Matrix Spike ( MS / MSD )**

**Water**

**QC Batch # 2005/03/14-2C.62**

MS/MSD

Lab ID: 2005-03-0139 - 004

MS: 2005/03/14-2C.62-056

Extracted: 03/14/2005

Analyzed: 03/14/2005 21:56

Dilution: 1.00

MSD: 2005/03/14-2C.62-022

Extracted: 03/14/2005

Analyzed: 03/14/2005 22:22

Dilution: 1.00

Compound	Conc. ug/L			Spk.Level ug/L	Recovery %			Limits %		Flags	
	MS	MSD	Sample		MS	MSD	RPD	Rec.	RPD	MS	MSD
Methyl tert-butyl ether	36.7	29.0	1.51	25	140.8	110.0	24.6	65-165	20		R1
Benzene	28.0	25.9	ND	25	112.0	103.6	7.8	69-129	20		
Toluene	28.5	26.9	ND	25	114.0	107.6	5.8	70-130	20		
<b>Surrogate(s)</b>											
1,2-Dichloroethane-d4	558	547		500	111.6	109.4		73-130			
Toluene-d8	561	577		500	112.2	115.4		81-114			S7

Severn Trent Laboratories, Inc.

STL San Francisco \* 1220 Quarry Lane, Pleasanton, CA 94566

Tel 925 484 1919 Fax 925 484 1096 \* www.stl-inc.com \* CA DHS ELAP# 2496

03/17/2005 12:56

Gas/BTEX/MTBE by 8260B

SECOR-Sacramento

Attn.: Amy Draffan

3017 Kilgore Road, Suite 100  
Rancho Cordova, CA 95670  
Phone: (916) 861-0400 Fax: (916) 861-0430

Project: 77CP.60004.01.4186  
Conoco Philips Site # 4186

Received: 03/02/2005 16:00

Site: 1771 First Street, Livermore, California

---

**Legend and Notes**

---

**Analysis Flag**

L2

Reporting limits were raised due to high level of analyte present in the sample.

**Result Flag**

Q1

Quantit. of unknown hydrocarbon(s) in sample based on gasoline.

R1

Analyte RPD was out of QC limits.

S7

Surrogate recoveries higher than acceptance limits.

STL-San Francisco

# ConocoPhillips Chain Of Custody Record

102359

1220 Quarry Lane

Pleasanton, CA 94566

(925) 484-1919 (925) 484-1096 fax

ConocoPhillips Site Manager:

INVOICE REMITTANCE ADDRESS:

**205-03-0102**

CONOCOPHILLIPS  
Attn: Dee Hutchinson  
3611 South Harbor, Suite 200  
Santa Ana, CA. 92704

ConocoPhillips Work Order Number

1237SEC550

ConocoPhillips Cost Object

WNO 1237

DATE: 02-28-05

PAGE: 1 of 1

SAMPLING COMPANY: <b>SECOR International Inc</b>		Valid Value ID:	CONOCOPHILLIPS SITE NUMBER <b>4186</b>		GLOBAL ID NO.: <b>T0600101493</b>
ADDRESS: <b>3017 Kilgore Rd Suite 100, Rancho Cordova, CA 95670</b>			SITE ADDRESS (Street And City): <b>1771 First Street, Livermore, California</b>		CONOCOPHILLIPS SITE MANAGER: <b>Thomas Kessel</b>
PROJECT CONTACT (Hardcopy or PDF Report for): <b>Amy Draffan</b>			EDF DELIVERABLE TO (RP, or Designation): <b>Amy Draffan</b>	PHONE NO.: <b>(916) 861-0400 ext 235</b>	CAREER: <b>adraffan@secor.com</b>
TELEPHONE: <b>(916) 861-0400 x 235</b>	FAX: <b>(916) 861-0430</b>	E-MAIL: <b>adraffan@secor.com</b>	LAB USE ONLY		
SAMPLER NAME(S) (Print): <i>James Potter</i>		CONSULTANT PROJECT NUMBER: <b>77CP.60004.01.4186</b>		REQUESTED ANALYSES	

TURNAROUND TIME (CALENDAR DAYS):  
 14 DAYS  7 DAYS  72 HOURS  48 HOURS  24 HOURS  LESS THAN 24 HOURS

SPECIAL INSTRUCTIONS OR NOTES: CHECK BOX IF EDD IS NEEDED

\* Field Point name only required if different from Sample ID

SAMPLING DATE	SAMPLING TIME	MATRIX	NO. OF CONT.	8015m - TPHd Extractable	8260B - TPHg/BTEX/MIBE	8280B - TPHg/BTEX/B	Oxymetals	8280B - TPHg/BTEX/B oxygenates + methanol (8015M)	8260B - Full Scan VOCs (does not include oxygenates)	8270C - Semi-Volatiles	8015M / 8021B - TPHg/BTEX/MIBE	Lead	Total	STLC	DTCLP	FIELD NOTES: Contained Preservative or PID Readings or Laboratory Notes	
																TEMPERATURE ON RECEIPT (C)	
022905	0810	Water	3		X												
022905	0815	Water	3		X												

Received by (Signature): <i>[Signature]</i>	Received by (Signature): <i>[Signature]</i>	Date: 3-1-05	Time: 1535
Received by (Signature): <i>[Signature]</i>	Received by (Signature): <i>[Signature]</i>	Date: 3-2-05	Time: 1235
Received by (Signature): <i>[Signature]</i>	Received by (Signature): <i>[Signature]</i>	Date: 3-2-05	Time: 1600

**SECOR-Sacramento**

April 12, 2005

3017 Kilgore Road, Suite 100  
Rancho Cordova, CA 95670

Attn.: Amy Draffan

Project: Conoco Philips Site #4186

Site: 1771 First Street, Livermore, California

Attached is our report for your samples received on 03/29/2005 16:35

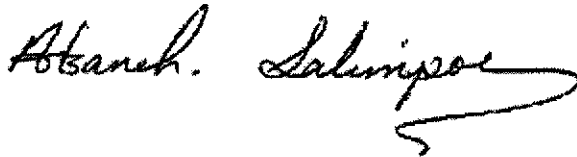
This report has been reviewed and approved for release. Reproduction of this report is permitted only in its entirety.

Please note that any unused portion of the samples will be discarded after 05/13/2005 unless you have requested otherwise.

We appreciate the opportunity to be of service to you. If you have any questions, please call me at (925) 484-1919.

You can also contact me via email. My email address is: [asalimpour@stl-inc.com](mailto:asalimpour@stl-inc.com)

Sincerely,



Afsaneh Salimpour  
Project Manager

Severn Trent Laboratories, Inc.

STL San Francisco \* 1220 Quarry Lane, Pleasanton, CA 94566  
Tel 925 484 1919 Fax 925 484 1096 \* [www.stl-inc.com](http://www.stl-inc.com) \* CA DHS ELAP# 2496

Gas/BTEX/MTBE by 8260B

SECOR-Sacramento

Attn.: Amy Draffan

3017 Kilgore Road, Suite 100  
Rancho Cordova, CA 95670  
Phone: (916) 861-0400 Fax: (916) 861-0430

Project: Conoco Philips Site #4186

Received: 03/29/2005 16:35

Site: 1771 First Street, Livermore, California

Samples Reported

Sample Name	Date Sampled	Matrix	Lab #
U-3	03/29/2005 13:10	Water	1
U-6	03/29/2005 12:50	Water	2

Gas/BTEX/MTBE by 8260B

SECOR-Sacramento

Attn.: Amy Draffan

3017 Kilgore Road, Suite 100  
Rancho Cordova, CA 95670  
Phone: (916) 861-0400 Fax: (916) 861-0430

Project: Conoco Phillips Site #4186

Received: 03/29/2005 16:35

Site: 1771 First Street, Livermore, California

Prep(s): 5030B Test(s): 8260B  
Sample ID: U-3 Lab ID: 2005-04-0007 - 1  
Sampled: 03/29/2005 13:10 Extracted: 4/8/2005 02:50  
Matrix: Water QC Batch#: 2005/04/07-2A.66  
Analysis Flag: L2 ( See Legend and Note Section )

Compound	Conc.	RL	Unit	Dilution	Analyzed	Flag
GRO (C6-C12)	15000	5000	ug/L	100.00	04/08/2005 02:50	
Benzene	78	50	ug/L	100.00	04/08/2005 02:50	
Toluene	ND	50	ug/L	100.00	04/08/2005 02:50	
Ethylbenzene	400	50	ug/L	100.00	04/08/2005 02:50	
Total xylenes	1100	100	ug/L	100.00	04/08/2005 02:50	
Methyl tert-butyl ether (MTBE)	3800	50	ug/L	100.00	04/08/2005 02:50	
<b>Surrogate(s)</b>						
1,2-Dichloroethane-d4	112.9	73-130	%	100.00	04/08/2005 02:50	
Toluene-d8	105.2	81-114	%	100.00	04/08/2005 02:50	

Severn Trent Laboratories, Inc.

STL San Francisco \* 1220 Quarry Lane, Pleasanton, CA 94566

Tel 925 484 1919 Fax 925 484 1096 \* www.stl-inc.com \* CA DHS ELAP# 2496

04/12/2005 15:55

Gas/BTEX/MTBE by 8260B

SECOR-Sacramento

Attn.: Amy Draffan

3017 Kilgore Road, Suite 100  
 Rancho Cordova, CA 95670  
 Phone: (916) 861-0400 Fax: (916) 861-0430

Project: Conoco Philips Site #4186

Received: 03/29/2005 16:35

Site: 1771 First Street, Livermore, California

Prep(s): 5030B	Test(s): 8260B
Sample ID: U-6	Lab ID: 2005-04-0007 - 2
Sampled: 03/29/2005 12:50	Extracted: 4/8/2005 03:15
Matrix: Water	QC Batch#: 2005/04/07-2A.66

Compound	Conc.	RL	Unit	Dilution	Analyzed	Flag
GRO (C6-C12)	2200	50	ug/L	1.00	04/08/2005 03:15	
Benzene	20	0.50	ug/L	1.00	04/08/2005 03:15	
Toluene	1.2	0.50	ug/L	1.00	04/08/2005 03:15	
Ethylbenzene	85	0.50	ug/L	1.00	04/08/2005 03:15	
Total xylenes	96	1.0	ug/L	1.00	04/08/2005 03:15	
Methyl tert-butyl ether (MTBE)	6.4	0.50	ug/L	1.00	04/08/2005 03:15	
<b>Surrogate(s)</b>						
1,2-Dichloroethane-d4	111.4	73-130	%	1.00	04/08/2005 03:15	
Toluene-d8	99.1	81-114	%	1.00	04/08/2005 03:15	

Severn Trent Laboratories, Inc.

STL San Francisco \* 1220 Quarry Lane, Pleasanton, CA 94566

Tel 925 484 1919 Fax 925 484 1096 \* www.stl-inc.com \* CA DHS ELAP# 2496

04/12/2005 15:55

Gas/BTEX/MTBE by 8260B

SECOR-Sacramento

Attn.: Amy Draffan

3017 Kilgore Road, Suite 100  
Rancho Cordova, CA 95670  
Phone: (916) 861-0400 Fax: (916) 861-0430

Project: Conoco Philips Site #4186

Received: 03/29/2005 16:35

Site: 1771 First Street, Livermore, California

**Batch QC Report**

Prep(s): 5030B

Test(s): 8260B

Method Blank

Water

QC Batch # 2005/04/07-2A.66

MB: 2005/04/07-2A.66-005

Date Extracted: 04/07/2005 19:05

Compound	Conc.	RL	Unit	Analyzed	Flag
GRO (C6-C12)	ND	50	ug/L	04/07/2005 19:05	
Benzene	ND	0.5	ug/L	04/07/2005 19:05	
Toluene	ND	0.5	ug/L	04/07/2005 19:05	
Ethylbenzene	ND	0.5	ug/L	04/07/2005 19:05	
Total xylenes	ND	1.0	ug/L	04/07/2005 19:05	
Methyl tert-butyl ether (MTBE)	ND	0.5	ug/L	04/07/2005 19:05	
<b>Surrogates(s)</b>					
1,2-Dichloroethane-d4	101.6	73-130	%	04/07/2005 19:05	
Toluene-d8	106.6	81-114	%	04/07/2005 19:05	

Severn Trent Laboratories, Inc.

STL San Francisco \* 1220 Quarry Lane, Pleasanton, CA 94566

Tel 925 484 1919 Fax 925 484 1096 \* www.stl-inc.com \* CA DHS ELAP# 2496

04/12/2005 15:55



Gas/BTEX/MTBE by 8260B

SECOR-Sacramento

Attn.: Amy Draffan

3017 Kilgore Road, Suite 100  
Rancho Cordova, CA 95670  
Phone: (916) 861-0400 Fax: (916) 861-0430

Project: Conoco Phillips Site #4186

Received: 03/29/2005 16:35

Site: 1771 First Street, Livermore, California

**Batch QC Report**

Prep(s): 5030B

Test(s): 8260B

**Laboratory Control Spike**

**Water**

**QC Batch # 2005/04/07-2A.66**

LCS 2005/04/07-2A.66-039

Extracted: 04/07/2005

Analyzed: 04/07/2005 18:39

LCSD

Compound	Conc. ug/L		Exp.Conc.	Recovery %		RPD	Ctrl.Limits %		Flags	
	LCS	LCSD		LCS	LCSD		%	Rec.	RPD	LCS
Methyl tert-butyl ether (MTBE)	26.4		25	105.6			65-165	20		
Benzene	22.8		25	91.2			69-129	20		
Toluene	27.4		25	109.6			70-130	20		
<b>Surrogates(s)</b>										
1,2-Dichloroethane-d4	468		500	93.6			73-130			
Toluene-d8	533		500	106.6			81-114			

Severn Trent Laboratories, Inc.

STL San Francisco \* 1220 Quarry Lane, Pleasanton, CA 94566

Tel 925 484 1919 Fax 925 484 1096 \* www.stl-inc.com \* CA DHS ELAP# 2496

04/12/2005 15:55

Page 5 of 7

Gas/BTEX/MTBE by 8260B

SECOR-Sacramento

Attn.: Amy Draffan

3017 Kilgore Road, Suite 100  
Rancho Cordova, CA 95670  
Phone: (916) 861-0400 Fax: (916) 861-0430

Project: Conoco Philips Site #4186

Received: 03/29/2005 16:35

Site: 1771 First Street, Livermore, California

**Batch QC Report**

Prep(s): 5030B

Test(s): 8260B

**Matrix Spike ( MS / MSD )**

**Water**

**QC Batch # 2005/04/07-2A.66**

MS/MSD

Lab ID: 2005-04-0020 - 001

MS: 2005/04/07-2A.66-004

Extracted: 04/07/2005

Analyzed: 04/07/2005 20:04

Dilution: 1.00

MSD: 2005/04/07-2A.66-029

Extracted: 04/07/2005

Analyzed: 04/07/2005 20:29

Dilution: 1.00

Compound	Conc. ug/L			Spk.Level ug/L	Recovery %			Limits %		Flags	
	MS	MSD	Sample		MS	MSD	RPD	Rec.	RPD	MS	MSD
Methyl tert-butyl ether	26.5	26.3	ND	25	106.0	105.2	0.8	65-165	20		
Benzene	22.7	22.1	ND	25	90.8	88.4	2.7	69-129	20		
Toluene	26.3	25.6	ND	25	105.2	102.4	2.7	70-130	20		
<b>Surrogate(s)</b>											
1,2-Dichloroethane-d4	503	500		500	100.6	100.0		73-130			
Toluene-d8	525	530		500	105.0	106.0		81-114			

Severn Trent Laboratories, Inc.

STL San Francisco \* 1220 Quarry Lane, Pleasanton, CA 94566

Tel 925 484 1919 Fax 925 484 1096 \* www.stl-inc.com \* CA DHS ELAP# 2496

04/12/2005 15:55

Gas/BTEX/MTBE by 8260B

SECOR-Sacramento

Attn.: Amy Draffan

3017 Kilgore Road, Suite 100  
Rancho Cordova, CA 95670  
Phone: (916) 861-0400 Fax: (916) 861-0430

Project: Conoco Philips Site #4186

Received: 03/29/2005 16:35

Site: 1771 First Street, Livermore, California

---

**Legend and Notes**

---

**Analysis Flag**

L2

Reporting limits were raised due to high level of analyte present in the sample.

# 2005 ConocoPhillips Custody Record

113709

STL-San Francisco

1220 Quarry Lane  
Pleasanton, CA 94566

(925) 484-1919 (925) 484-1056 fax

ConocoPhillips Site Manager:  
INVOICE REMITTANCE ADDRESS: CONOCOPHILLIPS  
Attn: Dee Hutchinson  
3611 South Harbor, Suite 200  
Santa Ana, CA. 92704

ConocoPhillips Work Order Number:  
1237SEC550  
ConocoPhillips Cost Object:  
WNO.1237

DATE: 03-29-05  
PAGE: 1 of 1

SAMPLER COMPANY: <b>SECOR International Inc</b>		CONOCOPHILLIPS SITE NUMBER: <b>4186</b>	GLOBAL ID NO.: <b>T0600101493</b>	
ADDRESS: <b>8017 Kilgore Rd Suite 100, Rancho Cordova, CA 95670</b>		SITE ADDRESS (Street and City): <b>1771 First Street, Livermore, California</b>		CONOCOPHILLIPS SITE MANAGER: <b>Thomas Kosel</b>
PROJECT CONTACT (primary or PDR Report job): <b>Amy Draffan</b>		EDF DELIVERABLE TO (RP or Designated): <b>Amy Draffan</b>	PHONE NO.: <b>(916) 861-0400 ext 235</b>	EMAIL: <b>adraffan@secor.com</b>
TELEPHONE: <b>(916) 861-0400 x 235</b>	FAX: <b>(916) 861-0430</b>	EMAIL: <b>adraffan@secor.com</b>		LAB USE ONLY
SAMPLER NAME(S) (Print): <b>James Patton</b>		CONSULTANT PROJECT NUMBER: <b>77CP.60004.01.4186</b>		

<b>REQUESTED ANALYSES</b>				
TURNAROUND TIME (CALENDAR DAYS): <input checked="" type="checkbox"/> 1 DAY <input type="checkbox"/> 7 DAYS <input type="checkbox"/> 72 HOURS <input type="checkbox"/> 48 HOURS <input type="checkbox"/> 24 HOURS <input type="checkbox"/> LESS THAN 24 HOURS				

SPECIAL INSTRUCTIONS OR NOTES: CHECK BOX IF EDIT IS NEEDED <input checked="" type="checkbox"/>	<b>FIELD NOTES:</b>  Container/Preservative or PID Readings or Laboratory Notes  TEMPERATURE ON RECEIPT: <b>6</b>
--	---

LAB USE ONLY	Sample Identification/Field Point Name*	SAMPLING		MATRIX	NO. OF CONT.	8015M - TPHd Extractable	8268B - TPHg/BTEX/MIBE	8268B - TPHg / BTEX / B Oxyaromatics	8280B - TPHg / BTEX / B oxygenates + methanol (M15M)	8280B - Full Scan VOCs (does not include oxygenates)	8270C - Semi-Volatiles	8015M / 8021B - TPHg/BTEX/MIBE	Lead	Total DBTL	DBCLP	
		DATE	TIME													
	U-3	03/29/05	13:10	Water	3		X									
	U-6	03/29/05	12:50	Water	3		X									

Requested by (Signature):	Received by (Signature):	Date: 3/29/05	Time: 1635
Requested by (Signature):	Received by (Signature):	Date:	Time:
Requested by (Signature):	Received by (Signature):	Date:	Time: