

DESERT PETROLEUM INC.

RECEIVED

10:01 am, Sep 07, 2010

Alameda County
Environmental Health

Mr. Jerry Wickham
Alameda County Health Care Services
Environmental Health Services
1131 Harbor Bay Parkway, Suite 250
Alameda, CA 94502-6577
(510) 567-6791
FACSMILE (510) 337-9335

July 20, 2010

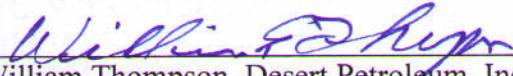
RE: The following report documents the Update Status Report, Former Desert Petroleum Site DP793" dated July 19, 2010, documents with Suspension of Sewer Discharge on June 30, 2010 at DP 793, 4035 Park Blvd., Oakland, California 94602.

Dear Mr. Wickham:

I have reviewed the enclosed report that I contracted Western Geo-Engineers to prepare.

I declare, under penalty of perjury, that the information and/or recommendations contained in the attached report are true and correct to the best of my knowledge.

Sincerely,



William Thompson, Desert Petroleum, Inc.



Date

JUNE 2010
UPDATE STATUS REPORT

FORMER DESERT SITE DP 793
4035 PARK BLVD.
OAKLAND, CA.

FOR
DESERT PETROLEUM

July 19, 2010

BY

-WEGE-
WESTERN GEO-ENGINEERS
1386 E. BEAMER STREET
WOODLAND, CALIFORNIA 95776
(530) 668-5300

TABLE OF CONTENTS

1.0 SITE LOCATION AND IDENTIFICATION NUMBERS..... 3
 2.0 SITE INVESTIGATION/REMEDIATION CHRONOLOGY 3
 3.0 LOCAL GEOLOGY 7
 3.1 Geomorphology.....7
 3.2 Stratigraphy7
 Station Property.....7
 Backyard Sewer Lateral Route.....8
 Brighton Avenue8
 4.0 COLLECTION AND ANALYSIS OF GROUNDWATER SAMPLES 8
 4.1 Depth to Water Measurements 8
 5.0 RESULTS OF GROUNDWATER MONITORING 8
 5.1 Groundwater Gradient and Flow Direction 8
 5.2 Results of Certified Analysis of Groundwater Samples 9
 Total Petroleum Hydrocarbons - gasoline.....9
 Benzene.....9
 MtBE.....9
 Toluene9
 Ethylbenzene9
 Xylenes10
 6.0 PURGING OF RECEPTOR TRENCH 10
 7.0 PUMPING ON-SITE WELL RS-5..... 10
 8.0 FREE PHASE FLOATING PRODUCT REMOVAL..... 10
 9.0 SUMMARY 11
 10.0 RECOMMENDATIONS 12
 11.0 TIME FRAME 12
 12.0 LIMITATIONS 12

List of Tables

- 1. Groundwater Elevation and Certified Analytical Results
- 2. Groundwater Pumped and Treated

List of Figures

- 1. Area Base Map "Geotracker"
- 2. Portion of USGS Oakland East 7.5 Minute Quadrangle
- 3. Sample Location Figure
- 4. Groundwater Gradient, June 30, 2010

List of Appendices

- A. METHODS AND PROCEDURES, QA/QC WITH FIELD NOTES
- B. CHARTS
- C. LABORATORY REPORT(S)

Mr. Bill Thompson
Desert Petroleum
P.O. Box 1601
Oxnard, California 93032
(805) 644-6784 FAX (805) 654-0720

July 19, 2010

Dear Mr. Thompson:

The following report documents the events that have occurred since the March 2010 Semi Annual sampling at DP793, 4035 Park Blvd., Oakland, California.

1.0 SITE LOCATION AND IDENTIFICATION NUMBERS

Former Desert Petroleum #793 is a non-active service station (USTs and associated piping removed June 23, 1994), located on the northwest corner of the intersection of Park Boulevard and Hampel Street at 4035 Park Blvd., Oakland, California (Figure 1). The site is located in projected section 32; T1S; R3W; MDB&M at an approximate elevation of 210 feet above mean sea level (Figure 2).

East Bay Municipal Utility District - Sewer Discharge Permit #50435501
Alameda County Local Oversight STID 1248
San Francisco Bay Regional Board (Region 2) Case # 01-0170
Facility/Leak Site ID# T0600100158

2.0 SITE INVESTIGATION/REMEDIATION CHRONOLOGY

November 30, 1989	Alameda County Health Department (Mr. Ariu Levi) notified Desert Petroleum that gasoline was trickling into a sewer on Brighton Avenue through a crack in the bottom of the sewer access. Desert Petroleum's area manager sent to site to reconstruct and audit tank inventories and sales records. The audit indicated overages on all tanks.
December 1, 1989	Desert Petroleum contacted the station tenant, Mr. Jason Gopad, and advised him to test the fuel tanks and associated piping.
December 5, 1989	The retail fueling facility was closed.
December 6, 1989	Mr. Gopad had the underground storage tanks tested. The test results were inconclusive.
December 7, 1989	All fuel was removed from the underground storage tanks. The product lines were tested by Walton Engineering. The regular leaded and super unleaded lines passed. The regular unleaded line failed. A 1/2 inch hole in the 2 inch unleaded supply line was located beneath the eastern pump island. An ultrasound investigation was conducted to determine the location of the onsite sewer line. An onsite soil gas survey was conducted and indicated

contamination associated with the pump islands and the sewer line on the western edge of the property.

December 8, 1989 Desert Petroleum submitted Unauthorized Release Report, drilling permits for site assessment obtained from Alameda County Flood Control and Water Conservation District, Zone 7, Underground Service Alert was notified.

December 11, 1989 Onsite drilling/sampling and well installation initiated, i.e., sample borings RS-1, RS-2, RS-3, RS-5 and RS-4. Groundwater monitoring wells installed into borings RS-1, RS-5, and RS-6. Vapor extraction well installed into boring RS-2.

December 12, 1989 Encroachment permit secured from the City of Oakland for assessment work in Brighton Avenue. Sample boring RS-4 drilled and sampled just east of the sewer access in Brighton Avenue to the 10 foot depth.

December 13, 1989 The area northeast of the sewer access was excavated with a backhoe. Gasoline appeared to be seeping from the backfill around the sewer line. A water supply line was inadvertently broke (USA markings incorrectly marked the location of this line). A vacuum truck was used to pump out the water/product from the excavation. Approximately 7,200 gallons of water/gasoline was manifested and sent to H & H Shipyard for treatment and disposal. The water line was repaired, perforated 4 inch PVC pipe was placed vertically into the excavation and the excavation backfilled with pea gravel from approximately the 8 foot depth to sub-grade, well RS-7. A portable vapor extraction unit connected to the sewer and RS-7 (operated during daylight hours).

December 15, 1989 RSI S.A.V.E. vapor extraction system installed and connected to onsite wells RS-1, RS-2, RS-5 and RS-6. It operated continuously for one week, then during daylight hours thereafter due to noise complaints from neighbors. Length of vapor extraction and amounts of hydrocarbons removed not documented.

July 24, 1990 Soil boring/sampling investigations near the sewer lateral in residential backyard 1227 Hampel Avenue.

August 21, 1990 Soil boring/sampling investigations near the sewer lateral in residential backyards 4006 Brighton Avenue and 4010/4012 Brighton Avenue.

December 1990 Commenced quarterly groundwater monitoring.

September 8, 1993 Levine - Fricke, conducted soil boring/sampling investigation at residences 4003 Park Blvd. and 4006 Brighton Avenue. Constructed monitor well at 4003 Park Blvd for property owner of 4003 Park Blvd (not a part of 4035 Park Blvd. site assessment/investigation).

June 23, 1994 Removed all USTs and associated piping from 4035 Park Blvd.

August 14, 1995 Over-excavated UST and dispenser areas at 4035 Park Blvd 1700 cubic yards of non-hazardous soil transported to and disposed at Forward Landfill, Stockton, California. Installed excavation well R3 (6 inch slotted PVC to 15 feet below surface) south of building, backfill excavation to 5 1/2 feet below surface with 1/4 inch pea gravel. Excavating removed monitor well RS-1.

August 16, 1995 Excavated and removed hydraulic hoists from station building.

August 31, 1995 Exploratory excavation at waste oil UST area, north of building and exploratory excavation west of building to 17 feet below surface. Installed excavation wells R1 in west excavation and R2 in north excavation.

September 5, 1995 Drill/sampled and installed replacement well for RS-1 (MW-1).

May 2, 1996 Soil Probe Survey and soil sample borings along sewer route from 4035 Park Blvd. through back yards, to Brighton Avenue. Temporary casing set in hand augered borings BH-1, BH-2, BH-3, BH-4 and BH-5. Conducted slug tests on BH-1, BH-2, BH-3 and BH-5. Not enough water entry into BH-4 to conduct test. The following hydraulic conductivities (k) were calculated; BH-1 = 0.15 ft/day, BH-2 = 2.9 ft/day, BH-3 = 0.11 ft/day, and BH-5 = 4.8 ft/day.

January 17, 1997 Soil Probe Survey Brighton Avenue

August 12, 1999 Installed receptor trench, Brighton Avenue. 148 cubic yards non hazardous gasoline contaminated soil transported and disposed of at Vacaville Landfill, Vacaville, California. Installed wells RS-8, RS-9 and RS-10.

October 7, 1999 Pumped 19,451 gallons of gasoline contaminated groundwater from receptor trench, stored in above ground 22,000 gallon Baker tank.

January 24, 2000 Obtained sewer discharge permit from East Bay Municipal Utility District, started discharge of water stored in Baker tank to city sewer.

May 4, 2000 Started weekly purging of receptor trench well T1 (4 hours once per week). Discharged purged water through water carbon and then to sewer.

February 15, 2001 Set submersible pump in RS-5 to pump continuously, continued once a week purging of receptor well T1 (46,121 gallons removed from receptor trench well).

July 19, 2001 Ceased pumping of RS-5 and weekly purging of T1; 62,511 gallons removed from T1 and 78,919 gallons removed from RS-5 (total 141,430 gallons of gasoline contaminated groundwater treated and disposed to sewer).

March 21, 2002 Resumed pumping at RS-5.

August 6, 2002 246,849 gallons of gasoline contaminated groundwater pumped, treated and disposed to sewer.

November 20, 2002 Commenced weekly hand bailing of free phase product from well RS-8.

December 12, 2002 Purged receptor trench of 1432 gallons gasoline tainted groundwater.

January 9, 2003 Purged receptor trench of 1349 gallons gasoline tainted groundwater.

January 30, 2003 Purged receptor trench of 1624 gallons gasoline tainted groundwater.

March 13, 2003 Purged receptor trench of 1413 gallons gasoline tainted groundwater.

April 3, 2003 Purged receptor trench of 1305 gallons gasoline tainted groundwater.

April 9, 2003 Demolished existing service station building.

April 15, 2003 Replaced RS05 groundwater recovery pump with WEGE pump, while RS05 pump is serviced.

May 1, 2003 Reinstalled RS05 groundwater recovery pump.
Submitted Workplan to Investigate Contaminated Soils Above and Below the Water Table at the Former Area of the Station Building, 4035 Park Blvd., Oakland, CA.

May 6, 2003 Purged receptor trench of 1589 gallons gasoline tainted groundwater.

May 21, 2003 Purged receptor trench of 2544 gallons gasoline tainted groundwater.

June 25, 2003 Purged receptor trench of 1796 gallons gasoline tainted groundwater.

July 17, 2003	Purged receptor trench of 1560 gallons gasoline tainted groundwater.
July 31, 2003	Notice to initiate Workplan submitted May 1, 2003
August 6, 2003	Alameda County Health, Scott Seery, phoned Western Geo-Engineers, notifying them not to proceed with workplan.
August 13, 2003	Purged receptor trench of 1574 gallons gasoline tainted groundwater.
September 4, 2003	Purged receptor trench of 1477 gallons gasoline tainted groundwater.
October 3, 2003	Purged receptor trench of 1285 gallons gasoline tainted groundwater.
October 16, 2003	Removed water carbon unit #1, placed new water carbon in #2 position and moved #2 water carbon into #1 position.
November 20, 2003	Purged receptor trench of 1303 gallons gasoline tainted groundwater.
December 18, 2003	Purged receptor trench of 1303 gallons gasoline tainted groundwater.
January 22, 2004	Purged receptor trench of 1175 gallons gasoline tainted groundwater.
February 26, 2004	Purged receptor trench of 102 gallons gasoline tainted groundwater.
March 30, 2004	Purged receptor trench of 975 gallons gasoline tainted groundwater.
April 29, 2004	Purged receptor trench of 1406 gallons gasoline tainted groundwater.
May 13, 2004	Turned pumping system off, removed lid from #1 carbon and removed scaling from top of carbon, replaced lid and restarted pump.
May 27, 2004	Purged receptor trench of 1647 gallons gasoline tainted groundwater.
June 30, 2004	Purged receptor trench of 1759 gallons gasoline tainted groundwater.
July 29, 2004	No electrical power to treatment compound; has been disconnected.
September 24, 2004	New power panel at site, need 100 feet extension cord to connect pump controller to power for RS-5.
September 28, 2004	Restarted pumping at RS-5. Performed 1/4ly well samplings. Purged receptor trench of 1911 gallons.
September 30, 2004	Containment berm full of water, inspected carbon #1, leaking from bottom. Turned system off and removed carbon from system.
October 15, 2004	Took delivery of new water carbon placed #2 carbon into #1 position, new carbon into #2 position, restarted pumping system.
December 8, 2004	Performed 1/4ly well samplings.
December 9-16, 2004	Direct push/cored 12 borings to obtain groundwater and soil samples.
March 8, 2005	Published Conceptual Model
March 23, 2005	Performed 1/4ly well samplings.
June 1, 2005	Performed 1/4ly well samplings.
September 21, 2005	Performed 1/4ly well samplings.
December 7, 2005	Performed 1/4ly well samplings.
February 13, 2006	Published Work Plan to: Over-excavate benzene contaminated soils; to connect the receptor trench to treatment compound; further define TPHg groundwater plume.
March 28, 2006	Performed 1/4ly well samplings.
June 21, 2006	Performed 1/4ly well samplings.
September 13, 2006	Performed 1/4ly well samplings.
October 19, 2006	Installed new water meter at carbon effluent, Meter # 82773286.
November 27, 2006	Destroyed monitor wells MW1, RS2 and RS6. Conducted hand auger soil and groundwater sampling downgradient of RS9.
December 21, 2006	Performed 1/4ly well samplings.
March 12, 2007	Performed 1/4ly well samplings.

June 20, 2007	Performed 1/4ly well samplings
September 26, 2007	Performed 1/4ly well samplings
October 5, 2007	Signed Proposal and Contract Agreement to connect intercept trench
December 18, 2007	Performed 1/4ly well samplings
February 28, 2008	Turned off groundwater pump and treatment system, pinhole leak in #1 water carbon.
March 3, 2008	Removed #1 water carbon, set-up #2 water carbon into #1 position and newly delivered water carbon into #2 position. Restarted groundwater pump and treatment system.
March 12, 2008	Cleaned and inspected RS5 pump, Performed 1/4ly well sampling
June 25, 2008	Obtained sewer discharge sample with EBMUD, monitored and sampled groundwater wells for 2 nd ¼ 2008 monitoring report.
September 17, 2008	Performed 1/4ly sampling of wells.
September 25, 2008	Pulled pump from RS5, needed extensive cleaning and service.
October 10, 2008	Reinstalled pump into RS5.
February 26, 2009	Cleaned #1 water carbon unit of bio film.
June 19, 2009	Obtained sewer discharge sample with EBMUD. Pulled pump from RS5, needed extensive cleaning and service.
September 1, 2009	Reinstalled pump into RS5
September 9, 2009	Received/installed new water carbon unit. Semi-Annual well samples.
December 19, 2009	Obtained sewer discharge sample as per EBMUD requirements.
March 24, 2010	Obtained semiannual monitor well samples.
June 30, 2010	Obtained semiannual sewer discharge sample and turn pump and treatment system off, suspending sewer discharge.

3.0 LOCAL GEOLOGY

3.1 Geomorphology

The site is located on the western slope of the Berkeley Hills. The Berkeley Hills are a northwest-southeast trending range within the Coastal Range Province of California. Erosion of the Coastal Ranges has filled the valleys within and bordering the Coastal Range with sequences of gravels, silts, sands, and clays.

3.2 Stratigraphy

Station Property

The native soil from surface to 13 feet below ground surface (BGS) consists of dark brown silty clay. The dark brown clay is underlain by light brown stiff clay that includes subrounded to rounded metavolcanic gravel. This clay extends to approximately 23 feet BGS at the northwest corner of the site. A fine to medium sand, clayey sand, and silty sand underlies the gravel and clay.

Backyard Sewer Lateral Route

Assessments performed along the sewer lateral as it leaves the site and routes through the residential area towards Brighton Avenue show the subsurface to consist of fill from a couple of inches thick to two feet thick. Beneath the fill is a sequence of clay formations that vary from light brown to dark gray to approximately the 6 foot depth. Silty clay then extends to approximately the 14-foot depth. Beneath the silty clay is sand with occasional gravel. This sand is 11 feet thick at RS5 and is underlain by silty clay.

Brighton Avenue

Construction of the receptor trench along the eastern curb area of Brighton Avenue revealed two separate sequences of lithology. North of the storm drain catch basin the sequence consists of; clay to the four foot depth, silty clay to the seven foot depth, fine silty sand to the 9 foot depth, medium sand to the 10 foot depth, silty clay to the 11 ½ foot depth, gravel to the 12 foot depth underlain by clay to the 16 foot depth. South of the storm catch basin is a sequence of silty clays and clays to depth.

Sandier sequence of sediments north of the storm water catch basin at Brighton Avenue compared to the sediments south of the storm water catch basin, indicate a facies change or a fault remnant striking east/west near the storm drain catch basin. A topographic lineation along the 200 foot contour is located in this area, see Figure 2.

4.0 COLLECTION AND ANALYSIS OF GROUNDWATER SAMPLES

Groundwater samples were collected on June 30, 2010. Samples were analyzed for Total Petroleum Hydrocarbons as gasoline, Benzene, Toluene, Ethylbenzene, Xylenes, the fuel oxygenant Methyl tert-Butyl Alcohol (MtBE) using EPA method 8260B, see Table 1. Figure 3 shows the positions of the groundwater monitoring wells, the receptor trench and previous sample locations.

4.1 Depth to Water Measurements

On June 30, 2010 depth to water was measured at each well using a product/water interface probe. Measurements are referenced to the surveyed elevation at the top of casing at each well. Table 1 shows the elevation of groundwater with respect to mean sea level for all wells through June 30, 2010. No depth to water measurements were obtained from the following wells do to their being none accessible; RS8, RS10, T1, T2, T3 and T4.

5.0 RESULTS OF GROUNDWATER MONITORING

5.1 Groundwater Gradient and Flow Direction

Figure 4 shows the groundwater elevation gradients and flow direction that were derived from the depth to water measurements of the monitor wells on June 30, 2010, see Table 1 and Appendix A and Appendix B.

The current flow direction is to the west, no pumping was occurring at RS5. The hydraulic gradient averages 0.096 feet/linear foot down gradient from well RS5 to the Brighton Avenue well RS07. The present flow direction and hydraulic gradient are consistent with previous

determinations by WEGE. Well LF1 has been removed by the property owner and is no longer available for sampling and/or depth to water measurements. Previous depth to water measurements showed that the groundwater gradient has a steep slope that extends south of RS5 and RS8 out to well LF1. This Northwest lineation is seen in previous groundwater gradient determinations and could be continuous to the change in lithology noted during the excavation of the intercept trench. The excavation south of T1 contained clay and the area north of T1 contained sands.

5.2 Results of Certified Analysis of Groundwater Samples

The results of the certified analyses of groundwater samples collected on June 30, 2010 are shown in Table 1. Groundwater samples were obtained from pumping well RS5.

Total Petroleum Hydrocarbons - gasoline

Total Petroleum Hydrocarbons-gasoline range (TPHg) has a laboratory lower detection limit (LLDL) of 50 ug/L. TPH-G concentrations above the LLDL were found in water samples from the pumping well (RS05) at 280 ug/L, Appendix C – Laboratory Report.

Benzene

Benzene has a LLDL of 0.5 ug/L. The recommended CPHG (California Public Health Goal) for Benzene is 1.5 ug/L. Benzene concentrations were found in the pumping well RS5 at 6.3 ug/L, Appendix C - Laboratory Report.

MtBE

MtBE has a LLDL of 0.5 ug/L. The recommended CPHG for MtBE is 13 ug/L. Analytical results for Fuel Oxygenant MtBE were below laboratory lower detection limits in pumping well RS5, Appendix C – Laboratory Report.

Toluene

Toluene has a LLDL of 0.5 ug/L. The recommended CPHG for toluene is 150 ug/L. Toluene was detected in pumping well RS5 at 1.1 ug/L.

Ethylbenzene

Ethylbenzene has a LLDL of 0.5 ug/L. The recommended CPHG for Ethylbenzene is 300 ug/L. Ethylbenzene was below LLDL for pumping well RS5.

Xylenes

Xylenes have a LLDL of 0.5 ug/L. The recommended CPHG for Xylenes is 1800 ug/L. Xylenes were detected in pumping well RS5 at 19 ug/.

6.0 PURGING OF RECEPTOR TRENCH

The last purging of the receptor (intercept) trench occurred on June 30, 2004. 93,553 gallons of groundwater have been pumped from the receptor trench and purged from the groundwater monitoring wells, see Table 2.

7.0 PUMPING ON-SITE WELL RS-5

On February 15, 2001 a submersible pump with a pump bypass was placed into RS-5. The pump rate was adjusted to 1.5 gpm and allowed to continuously pump from RS-5 for one week. 3223 gallons were pumped from RS-5 through the two, in series, water carbon units and discharged to the sewer. On February 22, 2001 the pump was inspected and showed a slimy growth covering the pump and discharge line that was below the water level. The pump was cleaned and placed back into RS-5 and continued to discharge from RS-5 through the water carbon units to sewer until July 19, 2001. On July 19, 2001 Desert Petroleum requested suspension of further pumping at the site. The pump was removed and the site secured. From February 15 through July 19, 2001, 78,919 gallons of gasoline contaminated groundwater was recovered from RS-5 and treated through carbon before being discharged to the sewer. Pumping from RS5 was resumed on March 21, 2002. The pumping system was turned off on June 23, 2010 due to the discovery of a pin hole leak in the #1 water carbon unit. The #1 water carbon was removed from the system and the system was not restarted until June 30, 2010 for a short period to obtain the required semiannual sewer discharge sample and the RS05 well sample. The system was then turned off and the groundwater pump, pump controller were removed from the site to prevent any further discharge. The sewer discharge permit was suspended at that time. As of June 30, 2010, 1,714,572 gallons of groundwater have been discharged to the sewer of which 1,621,019 gallons was pumped from RS5 and treated through two, in series, water carbon units prior to being discharge to the sanitary sewer, see Table 2.

The pumping from RS-5 has lowered the groundwater at this well by at least 12 feet, when compared to non pumping water measurements, see Charts - Appendix B. This creates a cone of influence out to offsite wells RS-8 and RS-10.

8.0 FREE PHASE FLOATING PRODUCT REMOVAL

Yellow Free Phase Floating Product was discovered in well RS8, 0.04 feet in thickness on August 6, 2002. Since all product storage and dispensing systems have been removed from the site (June 1994), it is thought that the product found in RS8, is residual from the November 1989 release and groundwater pumping at RS-5 is retrieving this residual product. Weekly bailing of the floating product from November 20, 2002 through December 12, 2002, (the last noted detection of free phase product in RS8) removed 0.014 gallons of degraded gasoline. This recovered degraded gasoline was stored on site in a 55 gallon 17H drum. Inspection of the 55 gallon drum on June 21, 2006 showed that the recovered gasoline had evaporated; the drum is now empty.

9.0 SUMMARY

Pumping from RS-5 has created a cone of influence off-site downgradient out to RS-8 and RS-10. Pumping has increased the dissolved oxygen in RS-5 and hydrocarbon concentrations have declined in R1, R2, R3, RS7, RS8, RS9, RS-10 and the Receptor Trench (T1). The sewer discharge permit was suspended on June 30, 2010 after obtaining the required samples. The groundwater submersible pump along with pump controller and water totalizing meter have been removed from the site.

The lowest hydrocarbon concentrations were observed May 31, 2001 while the weekly pumping of the trench well and the continuous pumping of RS5 were occurring; pumping from RS5 was discontinued between June 19, 2001 and March 21, 2002. The most recent sampling, March 24, 2010 shows continued decrease in hydrocarbons, see Table 1 and Charts in Appendix B.

Previous sampling on September 2, 1999, showed that aerobic bacteria (hydrocarbon degraders) exist in the groundwater associated with the hydrocarbon plume.

Soil core samples obtained from drilling activities December 2004 at 4035 Park Blvd showed high concentrations of TPHg and BTEX exist in the soils and shallow groundwater (8 ft to 32 ft below ground surface) beneath the area that was previously occupied by the station building. Water sampling of the December 2004 borings showed slow drainage, indicating low hydraulic conductivity in the silty clay and the clayey conglomerate formations. Previous slug test on temporary piezometers installed downgradient of the site, in the backyard of the surrounding residences, showed groundwater velocities ranging between 4 and 385 feet per year. Pumping of RS5 produces approximately 500 gallons per day (<0.5 gpm). To further slow the migration of the contaminants of concern, organic carbon analysis showed total organic carbon in the water bearing formations to range between 340 and 5700 mg/Kg. Along with the organic carbon, natural attenuation is occurring as evident from analysis for the electron acceptors (dissolved oxygen, nitrate, sulfate and ferric iron) along with the presence of biological indicators (carbon dioxide, methane, aerobic hydrocarbon degrading bacteria, and reduced nutrients ortho phosphate and ammonia as nitrogen).

Alameda County Health, in a letter dated November 16, 2005 concurred with the recommendations to remove the remaining on-site hydrocarbon source, continue existing groundwater extraction from well RS5 and to conduct continuous groundwater extraction from the intercept trench. These procedures were recommended by Western Geo-Engineers in their March 8, 2005 report "Soil and Groundwater Investigation with Conceptual Model".

A Work Plan detailing the above activities had been approved. The destruction of on-site monitoring wells MW1, RS2 and RS6 was completed in November 2006 along with the soil and groundwater sampling downgradient of monitor wells RS9. Bids received for connecting the intercept trench and construction of a permanent groundwater treatment facility have been received and the contract signed (McCoy Resource Corporation). McCoy has been unresponsive to starting

the work. Western Geo-Engineers acquired a secondary bid from RAH Environmental. RAH has been awarded the contract. The encroachment permit agreement with the City of Oakland, necessary for the construction of a conveyance pipe from the Brighton Avenue trench to a soon to be constructed treatment compound at 4035 Park Blvd. has been finalized. RAH had obtaining all necessary permits from The City of Oakland. Due to lack of funding and postponement of the work a refund of permit fees has been obtained. Currently Desert Petroleum does not have the finances to commence with the work. The current property owners indicate that they can obtain a loan to finance a portion of the onsite work to excavate the contaminated soils. A revised work plan that focuses on the onsite excavation work was generated and approved by Alameda County Environmental Health. This work was scheduled to commence in August 2010. Due to the unavailable funds, this work has also been postponed until funding is available that would allow the excavation work to be completed prior to October 15, City of Oakland stoppage of grading/excavation work.

Desert Petroleum has requested that new bid request be solicited on their behalf to perform the work necessary to construct the treatment compound and connect the intercept wells T1 and T2 with a conveyance pipe for groundwater recovery. This RFB is being sent to qualified contractors.

10.0 RECOMMENDATIONS

With a new property owner intending to build residential buildings on 4035 Park Blvd., the following recommendations are made by Western Geo-Engineers:

- Once financing has been obtained, commence with the permitting and installation of the intercept conveyance piping and construction of the new treatment compound.

11.0 TIME FRAME

July 2010	Request for Cost to construct treatment compound and connect intercept trench wells T1 and T2 for groundwater pumping/treatment.
September 2010	Semi annual well samplings

12.0 LIMITATIONS


This report is based upon the following:

- A. The observations of field personnel.
- B. The results of laboratory analyses performed by a state certified laboratory.
- C. Referenced documents.
- D. Our understanding of the regulations of the State of California, Alameda County and the City of Oakland.
- E. Changes in groundwater conditions can occur due to variations in rainfall, temperature, local and regional water use, and local construction practices.

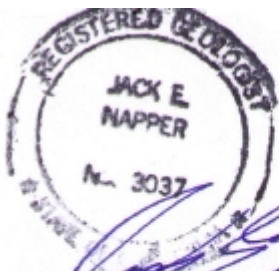
F. In addition, variations in the soil and groundwater conditions could exist beyond the points explored in this investigation.

State Certified Laboratory analytical results are included in this report. This laboratory follows EPA and State of California approved procedures; however, WEGE is not responsible for errors in these laboratory results. The services performed by Western Geo-Engineers have been conducted in a manner consistent with the level of care and skill ordinarily exercised by members of our profession currently practicing under similar conditions in the State of California and the Oakland area. Our work and/or supervision of remediation and/or abatement operations, active or preliminary, at this site is in no way meant to imply that we are owners or operators of this site. Known or suspected contamination of soil and/or groundwater must be reported to the appropriate agencies in a timely manner. No other warranty, expressed or implied, is made.

Sincerely,



George Converse
Project Geologist



Jack E. Napper
Ca. Reg. Geologist #3037

cc: Mr. J. Wickham, Alameda County Health (510) 567-6791
Mr. Kin Man Li, property owner (510) 599-7000
Geotracker

TABLE 1
GROUNDWATER ELEVATIONS AND CERTIFIED ANALYTICAL LABAORATAORY RESULTS FROM WATER SAMPLES
DESERT PETROLEUM, INC. SITE #793
4035 PARK BOULEVARD, OAKLAND, CALIFORNIA

ID#	DATE SAMPLED	(All concentrations in parts per billion [ug/L, ppb]) (AMSL = Above mean sea level)									
		WELL CASING ELEVATION (FEET AMSL)	DEPTH TO GROUND WATER (FEET)	GROUND WATER ELEVATION (FEET AMSL)	free phase prod. ft	TPH-G (UG/L)	BENZENE (UG/L) (1.5)	TOLUENE (UG/L) (150)	ETHYL-BENZENE (UG/L) (300)	XYLENES (UG/L) (1800)	MTBE (UG/L) (13)
(CALIFORNIA PUBLIC HEALTH GOAL)											
RS-01	12/14/1989	228.15	24.25	203.9		19000	2600	2700	200	1200	
RS-01	12/90					15000	3500	330	170	760	
RS-01	2/91					6900	910	200	39	540	
RS-01	6/91					1600	56	180	12	26	
RS-01	9/91					4100	730	7.6	5.1	24	
RS-01	12/91					8300	950	160	71	190	
RS-01	11/9/1992	228.15	17.05	211.1		1700	730	9.6	16	14	
RS-01	4/7/1994	228.15	13	215.15		860	84	12	16	110	
RS-01	6/19/1994	228.15	13.37	214.78		1400	150	12	52	87	
RS-01	9/17/1994	228.15	16.33	211.82		310	30	1.8	2.8	3.9	
RS-01	3/12/1995	228.15	4.66	223.49		ND	ND	ND	ND	ND	
RS-01	8/14/1995	DESTROYED BY OVER-EXCAVATION OF UST-DISPENSER AREAS (8/14/95)									
RS-01	9/5/1995	REPLACED WITH MW-1 9/5/95.									
MW-01	10/4/1995	229.5	12.38	217.12		ND	ND	ND	ND	ND	
MW-01	12/21/95	229.5	13.40	216.1		< 50	< 0.5	< 0.5	< 0.5	< 0.5	< 0.5
MW-01	03/27/96	229.5	5.53	223.97		< 50	< 0.5	< 0.5	< 0.5	< 2	< 50
MW-01	06/11/96	229.5	9.02	220.48		< 50	< 0.5	< 0.5	< 0.5	< 2	< 50
MW-01	09/04/96	229.5	11.84	217.66		< 50	< 0.5	< 0.5	< 0.5	< 2	< 5
MW-01	12/11/96	229.5	12.98	216.52		< 50	< 0.5	0.9	< 0.5	< 1	< 0.5
MW-01	2/21/97	229.5	9.50	220		< 50	< 0.5	0.9	< 0.5	< 1	< 0.5
MW-01	5/28/97	229.5	11.18	218.32		< 50	3	3	< 0.5	< 1	< 0.5
MW-01	9/2/1997	229.5	13.00	216.5		< 50	5	< 0.5	< 0.5	< 1	< 0.5
MW-01	11/24/1997	229.5	14.12	215.38		< 50	5	< 0.5	< 0.5	< 1	< 0.5
MW-01	2/25/1998	229.5	6.41	223.09		< 50	< 0.5	< 0.5	< 0.5	< 1	< 0.5
MW-01	7/8/1998	229.5	7.28	222.22		< 50	< 0.5	< 0.5	< 0.5	< 1	< 1
MW-01	9/16/1998	229.5	10.96	218.54		< 50	< 0.5	< 0.5	< 0.5	< 1	< 1
MW-01	11/24/1998	229.5	12.24	217.26		52	2.3	5.2	< 0.5	5.4	11
MW-01	2/23/1999	229.5	7.14	222.36		< 50	< 0.5	5	< 0.5	< 1	< 0.5
MW-01	5/5/1999	229.5	7.00	222.5		< 50	2	<0.5	< 0.5	< 1	8
MW-01	8/26/1999	229.5	11.41	218.09		<50	4.1	<0.5	< 0.5	< 1	<1
MW-01	11/10/1999	229.5	13.27	216.23		<50	<0.5	<0.5	< 0.5	< 1	<0.5
MW-01	2/9/2000	229.5	13.76	215.74		<50	<0.5	<0.5	0.5	< 1	0.5
MW-01	6/30/2000	229.5	10.63	218.87		<50	<0.5	<0.5	< 0.5	< 1	< 0.5
MW-01	8/8/2000	229.5	11.77	217.73		62	1	2	< 0.5	2	< 0.5
MW-01	11/16/2000	229.5	13.33	216.17		<50	<0.5	<0.5	< 0.5	< 1	< 0.5
MW-01	3/8/2001	229.5	12.30	217.2		<50	<0.5	<0.5	< 0.5	< 0.5	< 0.5
MW-01	5/31/2001	229.5	11.88	217.62		<50	<0.5	<0.5	< 0.5	< 0.5	< 0.5
MW-01	12/18/2001	229.5	13.74	215.76		<50	<0.5	<0.5	< 0.5	< 0.5	< 0.5
MW-01	2/19/2002	229.5	14.42	215.08		<50	<0.5	<0.5	< 0.5	< 0.5	< 0.5
MW-01	5/7/2002	229.5	10.78	218.72		<50	<0.5	<0.5	< 0.5	< 0.5	< 0.5
MW-01	8/6/2002	229.5	12.70	216.8		<50	<0.5	<0.5	< 0.5	< 0.5	< 0.5
MW-01	11/5/2002	229.5	15.00	214.5		<50	<0.5	<0.5	< 0.5	< 0.5	< 0.5
MW-01	12/12/2002	229.5	15.46	214.04							
MW-01	3/13/2003	229.5	14.51	214.99		<50	<0.5	<0.5	< 0.5	< 0.5	< 0.5
MW-01	5/6/2003	229.5	11.06	218.44		<50	<0.5	<0.5	< 0.5	< 0.5	< 0.5
MW-01	8/13/2003	229.5	13.13	216.37		<50	<0.5	<0.5	< 0.5	< 0.5	< 0.5
MW-01	11/20/2003	229.5	14.85	214.65		<50	<0.5	<0.5	< 0.5	< 0.5	< 0.5
MW-01	1/22/2004	229.5	13.65	215.85							
MW-01	3/30/2004	229.5	11.68	217.82		<50	<0.5	<0.5	< 0.5	< 0.5	< 0.5
MW-01	6/10/2004	229.5	13.08	216.42		<50	<0.5	<0.5	< 0.5	< 0.5	< 0.5
MW-01	9/28/2004	229.5	14.33	215.17		<50	<0.5	<0.5	< 0.5	< 0.5	< 0.5
MW-01	12/8/2004	229.5	14.67	214.83		<50	<0.5	<0.5	< 0.5	< 0.5	< 0.5
MW-01	3/23/2005	229.5	9.60	219.9		<50	<0.5	<0.5	< 0.5	< 0.5	< 0.5
MW-01	6/1/2005	229.5	8.64	220.86		<50	<0.5	<0.5	< 0.5	< 0.5	< 0.5
MW-01	9/21/2005	229.5	11.81	217.69		<50	1.3	<0.5	< 0.5	< 0.5	< 0.5
MW-01	12/7/2005	229.5	13.02	216.48		<50	1.7	<0.5	0.63	0.76	< 0.5
MW-01	3/28/2006	229.5	5.94	223.56		<50	<0.5	<0.5	< 0.5	< 0.5	< 0.5
MW-01	6/21/2006	229.5	7.63	221.87		<50	<0.5	<0.5	< 0.5	< 0.5	< 0.5
MW-01	9/13/2006	229.5	11.40	218.1		<50	<0.5	<0.5	< 0.5	< 0.5	< 0.5
MW-01	11/27/2006	well destroyed, Alameda County Public Works Permit #W2006-0971									
RS-02	12/14/1989	227.39									
RS-02	6/19/1994	227.39	10.89	216.50							

TABLE 1
GROUNDWATER ELEVATIONS AND CERTIFIED ANALYTICAL LABAORATAORY RESULTS FROM WATER SAMPLES
DESERT PETROLEUM, INC. SITE #793
4035 PARK BOULEVARD, OAKLAND, CALIFORNIA

ID#	DATE SAMPLED	(All concentrations in parts per billion [ug/L, ppb]) (AMSL = Above mean sea level)									
		WELL CASING ELEVATION (FEET AMSL)	DEPTH TO GROUND WATER (FEET)	GROUND WATER ELEVATION (FEET AMSL)	free phase prod. ft	TPH-G (UG/L)	BENZENE (UG/L) (1.5)	TOLUENE (UG/L) (150)	ETHYL-BENZENE (UG/L) (300)	XYLENES (UG/L) (1800)	MTBE (UG/L) (13)
(CALIFORNIA PUBLIC HEALTH GOAL)											
RS-02	3/12/1995	227.39	5.26	222.13		ND	ND	ND	ND	ND	
RS-02	10/4/1995	227.39	15.05	212.34		ND	ND	ND	ND	ND	
RS-02	12/21/95	227.39	9.95	217.44		< 50	< 0.5	< 0.5	< 0.5	< 0.5	< 0.5
RS-02	03/27/96	227.39	6.28	221.11		< 50	< 0.5	< 0.5	< 0.5	< 2	< 50
RS-02	06/11/96	227.39	8.00	219.39		< 50	1.2	2.8	< 0.5	< 2	< 50
RS-02	09/04/96	227.39	9.89	217.50		< 50	< 0.5	< 0.5	< 0.5	< 2	< 5
RS-02	12/11/96	227.39	8.38	219.01		< 50	< 0.5	< 0.5	< 0.5	< 1	6
RS-02	2/21/97	227.39	6.96	220.43		< 50	< 0.5	< 0.5	< 0.5	< 1	< 0.5 *
RS-02	5/28/97	227.39	10.02	217.37		< 50	3	3	< 0.5	< 1	< 0.5 *
RS-02	9/2/1997	227.39	11.46	215.93		< 50	< 0.5	< 0.5	< 0.5	< 1	< 0.5 *
RS-02	11/24/1997	227.39	10.43	216.96		< 50	< 0.5	1	< 0.5	3	< 0.5 *
RS-02	2/25/1998	227.39	3.57	223.82		< 50	< 0.5	< 0.5	< 0.5	< 1	< 0.5 *
RS-02	7/8/1998	227.39	8.83	218.56		< 50	< 0.5	< 0.5	< 0.5	< 1	< 1 *
RS-02	9/16/1998	227.39	10.60	216.79		< 50	< 0.5	< 0.5	< 0.5	< 1	< 1 *
RS-02	11/24/1998	227.39	13.27	214.12		140	2.8	19	2.6	3.3	15 *
RS-02	2/23/1999	227.39	4.06	223.33		< 50	< 0.5	< 0.5	< 0.5	< 1	< 0.5
RS-02	5/5/1999	227.39	7.70	219.69		< 50	0.7	< 0.5	< 0.5	< 1	6
RS-02	8/26/1999	227.39	11.42	215.97		200	15	23	1.7	23	9 *
RS-02	11/10/1999	227.39	15.94	211.45		< 50	< 0.5	< 0.5	< 0.5	< 1	< 0.5
RS-02	2/9/2000	227.39	8.91	218.48		< 50	< 0.5	< 0.5	< 0.5	< 1	< 0.5
RS-02	6/30/2000	227.39	9.79	217.60		52	2	< 0.5	< 0.5	< 1	< 0.5
RS-02	8/8/2000	227.39	10.71	216.68		60	< 0.5	< 0.5	< 0.5	< 1	< 0.5
RS-02	11/16/2000	227.39	10.39	217.00		< 50	< 0.5	< 0.5	< 0.5	< 1	< 0.5
RS-02	3/8/2001	227.39	6.62	220.77		< 50	< 0.5	< 0.5	< 0.5	< 0.5	< 0.5 ****
RS-02	5/31/2001	227.39	10.09	217.30		< 50	< 0.5	< 0.5	< 0.5	< 0.5	< 0.5 ****
RS-02	12/18/2001	227.39	6.99	220.40		< 50	< 0.5	< 0.5	< 0.5	< 0.5	< 0.5 ****
RS-02	2/19/2002	227.39	8.08	219.31		< 50	< 0.5	< 0.5	< 0.5	< 0.5	< 0.5 ****
RS-02	5/7/2002	227.39	9.27	218.12		< 50	< 0.5	< 0.5	< 0.5	< 0.5	< 0.5 ****
RS-02	8/6/2002	227.39	11.38	216.01		< 50	< 0.5	< 0.5	< 0.5	< 0.5	< 0.5 ****
RS-02	11/5/2002	227.39	17.09	210.30		< 50	< 0.5	< 0.5	< 0.5	< 0.5	< 0.5 ****
RS-02	12/12/2002	227.39	13.19	214.20							
RS-02	3/13/2003	227.39	8.93	218.46		< 50	< 0.5	< 0.5	< 0.5	< 0.5	< 0.5 ****
RS-02	5/6/2003	227.39	8.05	219.34		< 50	< 0.5	< 0.5	< 0.5	< 0.5	< 0.5 ****
RS-02	8/13/2003	227.39	11.16	216.23		< 50	< 0.5	< 0.5	< 0.5	< 0.5	< 0.5 ****
RS-02	11/20/2003	227.39	17.62	209.77		< 50	< 0.5	< 0.5	< 0.5	< 0.5	< 0.5 ****
RS-02	1/22/2004	227.39	7.40	219.99							
RS-02	3/30/2004	227.39	7.95	219.44		< 50	< 0.5	< 0.5	< 0.5	< 0.5	< 0.5 ****
RS-02	6/10/2004	227.39	10.56	216.83		< 50	< 0.5	< 0.5	< 0.5	< 0.5	< 0.5 ****
RS-02	9/28/2004	227.39	17.02	210.37		< 50	< 0.5	< 0.5	< 0.5	< 0.5	< 0.5 ****
RS-02	12/8/2004	227.39	9.80	217.59		< 50	< 0.5	< 0.5	< 0.5	< 0.5	< 0.5 ****
RS-02	3/23/2005	227.39	5.05	222.34		< 50	< 0.5	< 0.5	< 0.5	< 0.5	< 0.5 ****
RS-02	6/1/2005	227.39	8.60	218.79		< 50	< 0.5	< 0.5	< 0.5	< 0.5	< 0.5 ****
RS-02	9/21/2005	227.39	11.45	215.94		< 50	1.4	< 0.5	< 0.5	< 0.5	< 0.5 ****
RS-02	12/7/2005	227.39	10.82	216.57		< 50	< 0.5	< 0.5	< 0.5	< 0.5	< 0.5 ****
RS-02	3/28/2006	227.39	3.85	223.54		< 50	< 0.5	< 0.5	< 0.5	< 0.5	< 0.5 ****
RS-02	6/21/2006	227.39	8.86	218.53		< 50	< 0.5	< 0.5	< 0.5	< 0.5	< 0.5 ****
RS-02	9/13/2006	227.39	11.25	216.14		< 50	< 0.5	< 0.5	< 0.5	< 0.5	< 0.5 ****
RS-02	11/27/2006	well destroyed, Alameda County Public Works Permit #W2006-0972									
RS-05	12/14/1989	227.61	25.97	201.64		57000	3100	4300	670	3400	
RS-05	2/91	227.61			sheen						
RS-05	6/91	227.61			sheen						
RS-05	9/91	227.61			sheen						
RS-05	12/91	227.61			sheen						
RS-05	11/9/1992	227.61	20.73	206.88		50000	650	4800	1100	15000	
RS-05	4/7/1994	227.61	18.16	209.45		27000	5000	8700	550	2800	
RS-05	6/19/1994	227.61	18.11	209.5		20000	2100	5300	470	2500	
RS-05	9/17/1994	227.61	19.63	207.98		9300	230	340	110	700	
RS-05	3/12/1995	227.61	14.54	213.07		93000	6400	2000	19000	10000	
RS-05	10/4/1995	227.61	17.53	210.08		16000	420	2100	320	1800	
RS-05	12/21/95	227.61	17.47	210.14		48000	3500	9200	840	4800	56
RS-05	03/27/96	227.61	13.51	214.1		68000	4900	18000	1700	11000	< 3000
RS-05	06/11/96	227.61	14.25	213.36		66000	6300	20000	2100	12000	< 3000

TABLE 1
GROUNDWATER ELEVATIONS AND CERTIFIED ANALYTICAL LABAORATAORY RESULTS FROM WATER SAMPLES
DESERT PETROLEUM, INC. SITE #793
4035 PARK BOULEVARD, OAKLAND, CALIFORNIA

ID#	DATE SAMPLED	(All concentrations in parts per billion [ug/L, ppb]) (AMSL = Above mean sea level)									
		WELL CASING ELEVATION (FEET AMSL)	DEPTH TO GROUND WATER (FEET)	GROUND WATER ELEVATION (FEET AMSL)	free phase prod. ft	TPH-G (UG/L)	BENZENE (UG/L) (1.5)	TOLUENE (UG/L) (150)	ETHYL-BENZENE (UG/L) (300)	XYLENES (UG/L) (1800)	MTBE (UG/L) (13)
(CALIFORNIA PUBLIC HEALTH GOAL)											
RS-05	09/04/96	227.61	16.50	211.11		31000	2100	11000	1100	6800	400
RS-05	12/11/96	227.61	15.88	211.73		85000	7000	21000	1800	8900	570
RS-05	2/21/97	227.61	13.76	213.85	sheen	100000	5000	22000	1700	7300	<0.5
RS-05	5/28/97	227.61	15.77	211.84		52000	4500	19000	2100	10000	<0.5
RS-05	9/2/1997	227.61	17.47	210.14		38000	2200	9400	1300	5800	<0.5
RS-05	11/24/1997	227.61	18.67	208.94		45000	4000	16000	1900	9700	<0.5
RS-05	2/25/1998	227.61	10.53	217.08		160000	2700	31000	5300	28000	<0.5
RS-05	7/8/1998	227.61	13.75	213.86		45000	2800	12000	2000	8500	<10
RS-05	9/16/1998	227.61	15.80	211.81		49000	1400	7500	1700	8600	<5
RS-05	11/24/1998	227.61	16.64	210.97		89000	5300	15000	2800	13000	<10
RS-05	2/23/1999	227.61	12.36	215.25		19000	1900	11000	2500	4800	<25
RS-05	5/5/1999	227.61	12.78	214.83		78000	2000	10000	3000	15000	540
RS-05	8/26/1999	227.61	16.06	211.55		35000	870	4000	1900	8300	<1
RS-05	11/10/1999	227.61	17.54	210.07		40000	1000	5600	1800	8100	<0.5
RS-05	2/9/2000	227.61	16.31	211.3		46000	1400	6900	2700	11000	<0.5
RS-05	6/30/2000	227.61	15.15	212.46		37000	810	5200	2200	9100	<2.5
RS-05	8/8/2000	227.61	16.10	211.51		14000	330	500	1400	6500	<0.5
RS-05	11/16/2000	227.61	17.38	210.23		23000	430	2300	1100	4800	<0.5
RS-05	3/8/2001	227.61	27.72	199.89		11000	360	260	140	1500	2.6
RS-05	5/31/2001	227.61	22.96	204.65		7500	26	11	38	470	<5
RS-05	12/18/2001	227.61	15.61	212		12000	610	1200	100	1500	<5
RS-05	2/19/2002	227.61	14.80	212.81		22000	460	1700	680	4000	<5
RS-05	5/7/2002	227.61	31.77	195.84		700	150	10	19	67	5.2
RS-05	8/6/2002	227.61	31.77	195.84		< 50	<0.5	<0.5	<0.5	<0.5	<0.5
RS-05	11/5/2002	227.61	31.77	195.84		12000	150	360	21	890	<2
RS-05	12/12/2002	227.61	21.53	206.08							
RS-05	3/13/2003	227.61	36.70	190.91		240	5.5	1.9	2.3	9.6	1.4
RS-05	5/6/2003	227.61	14.52	213.09							
RS-05	8/13/2003	227.61	31.77	195.84		310	1.4	<0.5	1	2.9	<0.5
RS-05	11/20/2003	227.61	32.00	195.61		17000	150	720	240	1800	0.72
RS-05	1/22/2004	227.61	25.30	202.31							
RS-05	3/30/2004	227.61	21.90	205.71		4000	370	59	13	380	2.6
RS-05	6/10/2004	227.61	35.00	192.61		120	7	0.88	1.3	4.3	1.3
RS-05	9/28/2004	227.61	19.05	208.56		2600	110	89	75	56	<0.5
RS-05	12/8/2004	227.61	25.00	202.61		< 50	<0.5	<0.5	<0.5	<0.5	<0.5
RS-05	3/23/2005	227.61	26.05	201.56		7400	890	280	180	940	5.1
RS-05	6/1/2005	227.61	25.40	202.21		3500	380	85	59	360	3
RS-05	9/21/2005	227.61	19.00	208.61		790	34	4.7	0.86	99	<0.5
RS-05	12/7/2005	227.61	27.50	200.11		2200	65	30	24	200	1.3
RS-05	3/28/2006	227.61	19.60	208.01		5000	370	130	70	550	2.4
RS-05	6/21/2006	227.61	16.70	210.91		990	42	6.5	2.4	110	<0.5
RS-05	9/13/2006	227.61	31.00	196.61		240	11	3.2	1.2	11	0.85
RS-05	12/21/2006	227.61	28.00	199.61		4800	140	120	130	440	0.78
RS-05	3/12/2007	227.61	30.00	197.61		4300	160	130	110	600	1.5
RS-05	6/20/2007	227.61	30.00	197.61		160	7.5	3	2.2	13	0.58
RS-05	9/26/2007	227.61	22.80	204.81		2300	80	57	19	350	0.59
RS-05	12/18/2007	227.61	24.65	202.96		570	15	6.8	7.8	42	<0.5
RS-05	3/12/2008	227.61	20.50	207.11		4600	330	110	98	440	1.9
RS-05	6/25/2008	227.61	34.00	193.61		74	3.7	<0.5	0.5	2	0.7
RS-05	9/17/2008	227.61	23.45	204.16		280	4.4	1.5	0.55	18	<0.5
RS-05	12/17/2008	227.61	28.20	199.41		450	2.3	1.2	1.8	13	<0.5
RS-05	3/31/2009	227.61	34.00	193.61		800	120	14	2	54	2.7
RS-05	9/8/2009	227.61	22.30	205.31		1100	6.3	1	3.9	24	1.4
RS-05	3/24/2010	227.61	33.50	194.11		1700	200	29	10	110	2.6
RS-05	6/30/2010	227.61	16.03	211.58		280	6.3	1.1	<0.5	19	<0.5
RS-06	12/14/1989	227.22	22.52	204.7		11000	1400	1700	160	860	
RS-06	2/91	227.22			sheen						
RS-06	6/91	227.22				95000	4200	4200	650	3700	
RS-06	9/91	227.22			sheen						
RS-06	12/91	227.22				64000	3700	2300	730	4100	
RS-06	11/9/1992	227.22	19.43	207.79		19000	1600	710	500	1600	
RS-06	4/7/1994	227.22	14.42	212.8		16000	1200	1300	290	1100	

TABLE 1
GROUNDWATER ELEVATIONS AND CERTIFIED ANALYTICAL LABAORATAORY RESULTS FROM WATER SAMPLES
DESERT PETROLEUM, INC. SITE #793
4035 PARK BOULEVARD, OAKLAND, CALIFORNIA

ID#	DATE SAMPLED	(All concentrations in parts per billion [ug/L, ppb]) (AMSL = Above mean sea level)									
		WELL CASING ELEVATION (FEET AMSL)	DEPTH TO GROUND WATER (FEET)	GROUND WATER ELEVATION (FEET AMSL)	free phase prod. ft	TPH-G (UG/L)	BENZENE (UG/L) (1.5)	TOLUENE (UG/L) (150)	ETHYL-BENZENE (UG/L) (300)	XYLENES (UG/L) (1800)	MTBE (UG/L) (13)
(CALIFORNIA PUBLIC HEALTH GOAL)											
RS-06	6/19/1994	227.22	14.45	212.77		23000	1300	2200	590	2200	
RS-06	9/17/1994	227.22	19.52	207.7		24000	630	790	250	1100	
RS-06	3/12/1995	227.22	8.90	218.32		3200	450	13	82	230	
RS-06	10/4/1995	227.22	17.78	209.44		3700	170	250	38	290	
RS-06	12/21/95	227.22	14.98	212.24		3100	120	30	16	150	58
RS-06	03/27/96	227.22	10.00	217.22		6900	180	440	79	360	< 300
RS-06	06/11/96	227.22	12.00	215.22		7400	220	150	30	100	<1000
RS-06	09/04/96	227.22	15.00	212.22		1400	68	2.6	7.7	9.2	14
RS-06	12/11/96	227.22	12.36	214.86		1800	39	16	10	18	< 0.5
RS-06	2/21/97	227.22	10.00	217.22		2100	71	85	25	40	< 0.5
RS-06	5/28/97	227.22	13.56	213.66		1700	34	12	11	16	< 0.5
RS-06	9/2/1997	227.22	16.35	210.87		940	34	71	9	55	< 0.5
RS-06	11/24/1997	227.22	15.72	211.5		490	9	6	1	7	< 0.5
RS-06	2/25/1998	227.22	6.26	220.96		1400	22	47	5	52	< 0.5
RS-06	7/8/1998	227.22	11.41	215.81		1500	83	9	84	2	<10
RS-06	7/30/1998	227.22				<50	<0.5	<0.5	<0.5	<1	
RS-06	9/16/1998	227.22	13.42	213.8		990	23	<0.5	<0.5	<1	<1
RS-06	11/24/1998	227.22	15.91	211.31		3400	5.3	<0.5	<0.5	14	<0.5
RS-06	2/23/1999	227.22	7.00	220.22		1000	3.4	3.2	1.6	7.3	<0.5
RS-06	5/5/1999	227.22	10.29	216.93		1100	50	10	80	15	2
RS-06	8/26/1999	227.22	13.72	213.5		690	44	2.5	30	31	<5
RS-06	11/10/1999	227.22	13.90	213.32		1800	2	2	0.9	16	< 0.5
RS-06	2/9/2000	227.22	12.77	214.45		410	3	3	4	7	< 0.5
RS-06	6/30/2000	227.22	12.69	214.53		660	7	2	5	6	< 0.5
RS-06	8/8/2000	227.22	14.72	212.5		660	2	3	2	6	< 0.5
RS-06	11/16/2000	227.22	15.28	211.94		560	1	2	1	5	< 0.5
RS-06	3/8/2001	227.22	10.10	217.12		2200	<0.5	<0.5	<0.5	<0.5	<0.5
RS-06	5/31/2001	227.22	12.96	214.26		630	<0.5	<0.5	<0.5	<0.5	<5
RS-06	12/18/2001	227.22	10.88	216.34		56	0.53	<0.5	<0.5	0.56	<0.5
RS-06	2/19/2002	227.22	11.08	216.14		<50	<0.5	<0.5	0.6	<0.5	<0.5
RS-06	5/7/2002	227.22	12.31	214.91		240	<0.5	<0.5	<0.5	<0.5	<0.5
RS-06	8/6/2002	227.22	14.23	212.99		130	<0.5	<0.5	<0.5	<0.5	3
RS-06	11/5/2002	227.22	17.99	209.23		<50	<0.5	<0.5	<0.5	<0.5	<0.5
RS-06	12/12/2002	227.22	17.57	209.65							
RS-06	3/13/2003	227.22	11.82	215.4		120	<0.5	<0.5	<0.5	<0.5	<0.5
RS-06	5/6/2003	227.22	10.10	217.12		<50	<0.5	<0.5	<0.5	<0.5	<0.5
RS-06	8/13/2003	227.22	13.88	213.34		<50	<0.5	<0.5	<0.5	<0.5	<0.5
RS-06	11/20/2003	227.22	18.62	208.6		<50	<0.5	<0.5	<0.5	<0.5	<0.5
RS-06	1/22/2004	227.22	11.24	215.98							
RS-06	3/30/2004	227.22	10.72	216.5		<50	<0.5	<0.5	<0.5	<0.5	<0.5
RS-06	6/10/2004	227.22	13.52	213.7		<50	<0.5	<0.5	<0.5	<0.5	<0.5
RS-06	9/28/2004	227.22	17.95	209.27		<50	<0.5	<0.5	<0.5	<0.5	<0.5
RS-06	12/8/2004	227.22	14.80	212.42		<50	<0.5	<0.5	<0.5	<0.5	<0.5
RS-06	3/23/2005	227.22	7.62	219.6		<50	<0.5	<0.5	<0.5	<0.5	<0.5
RS-06	6/1/2005	227.22	10.72	216.5		<50	<0.5	<0.5	<0.5	<0.5	<0.5
RS-06	9/21/2005	227.22	13.22	214		<50	1.5	<0.5	<0.5	<0.5	<0.5
RS-06	12/7/2005	227.22	14.02	213.2		74	0.63	<0.5	<0.5	<0.5	<0.5
RS-06	3/28/2006	227.22	6.03	221.19		<50	<0.5	<0.5	<0.5	<0.5	<0.5
RS-06	6/21/2006	227.22	10.40	216.82		100	<0.5	<0.5	<0.5	<0.5	<0.5
RS-06	9/13/2006	227.22	12.82	214.4		<50	<0.5	<0.5	<0.5	<0.5	<0.5
RS-06	11/27/2006	well destroyed, Alameda County Public Works Permit #W2006-0973									
RS-07	12/14/1989	195.99									
RS-07	7/90	195.99				5600000	24000	210000	50000	740000	
RS-07	2/91	195.99			shhen						
RS-07	6/91	195.99			sheen						
RS-07	9/91	195.99			sheen						
RS-07	12/91	195.99				270000	11000	22000	2000	13000	
RS-07	11/9/1992	195.99	4.62	191.37		81000	12000	16000	1900	13000	
RS-07	4/7/1994	195.99	4.03	191.96		74000	16000	16000	1400	8500	
RS-07	6/19/1994	195.99	4.07	191.92		83000	22000	19000	1500	9500	
RS-07	9/17/1994	195.99	4.05	191.94		270000	13000	15000	2100	1100	
RS-07	3/12/1995	195.99	3.72	192.27		35000	5100	560	6300	3600	

TABLE 1
GROUNDWATER ELEVATIONS AND CERTIFIED ANALYTICAL LABAORATAORY RESULTS FROM WATER SAMPLES
DESERT PETROLEUM, INC. SITE #793
4035 PARK BOULEVARD, OAKLAND, CALIFORNIA

ID#	DATE SAMPLED	(All concentrations in parts per billion [ug/L, ppb]) (AMSL = Above mean sea level)									
		WELL CASING ELEVATION (FEET AMSL)	DEPTH TO GROUND WATER (FEET)	GROUND WATER ELEVATION (FEET AMSL)	free phase prod. ft	TPH-G (UG/L)	BENZENE (UG/L) (1.5)	TOLUENE (UG/L) (150)	ETHYL-BENZENE (UG/L) (300)	XYLENES (UG/L) (1800)	MTBE (UG/L) (13)
(CALIFORNIA PUBLIC HEALTH GOAL)											
RS-09	7/8/1998										
RS-09	9/16/1998										
RS-09	11/24/1998										
RS-09	2/23/1999										
RS-09	5/5/1999										
RS-09	8/26/1999	195.63	7.46	188.17		17000	3500	1200	360	1600	180 *
RS-09	11/10/1999	195.63	7.91	187.72		2800	520	62	46	130	<0.5
RS-09	2/9/2000	195.63	6.09	189.54		3400	650	74	64	130	<0.5
RS-09	6/30/2000	195.63	6.77	188.86		3000	600	79	74	120	<0.5
RS-09	8/8/2000	195.63	7.32	188.31		4900	500	430	160	530	<0.5
RS-09	11/16/2000	195.63	6.33	189.3		3000	350	220	90	220	<0.5
RS-09	3/8/2001	195.63	4.93	190.7		<50	3.4	<0.5	<0.5	<0.5	<0.5
RS-09	5/31/2001	195.63	4.01	191.62		510	96	6	6.2	9.1	5.5
RS-09	12/18/2001	195.63	4.81	190.82		210	11	1.8	3.9	7.6	<0.5
RS-09	2/19/2002	195.63	4.99	190.64		<50	<0.5	<0.5	<0.5	<0.5	<0.5
RS-09	5/7/2002	195.63	6.08	189.55		130	7.9	<0.5	1.2	<0.5	0.67
RS-09	8/6/2002	195.63	6.93	188.7		380	29	1.2	2.3	2.9	3.1
RS-09	11/5/2002	195.63	7.53	188.1		1800	240	9	27	110	8.6
RS-09	12/12/2002	195.63	7.23	188.4							
RS-09	3/13/2003	195.63	5.73	189.9		410	30	3	6	9.5	3.3
RS-09	5/6/2003	195.63	4.83	190.8		910	72	15	9.2	26	5.5
RS-09	8/13/2003	195.63	8.24	187.39		810	20	<0.5	2.4	1.6	3.6
RS-09	11/20/2003	195.63	6.99	188.64		3600	920	5.3	6.1	20	30
RS-09	1/22/2004	195.63	5.43	190.2							
RS-09	3/30/2004	195.63	5.07	190.56		1900	360	9.3	19	48	21
RS-09	6/10/2004	195.63	6.18	189.45		950	180	3	8.4	14	8.7
RS-09	9/28/2004	195.63	6.94	188.69		4900	1800	5.9	5	16	31
RS-09	12/8/2004	195.63	4.42	191.21		74	<0.5	<0.5	<0.5	<0.5	<0.5
RS-09	3/23/2005	195.63	4.10	191.53		540	99	1.1	1.1	4.5	3.6
RS-09	6/1/2005	195.63	5.12	190.51		3300	170	14	77	87	12
RS-09	9/21/2005	195.63	6.60	189.03		330	1.2	<0.5	<0.5	0.58	1.8
RS-09	12/7/2005	195.63	5.92	189.71		88	<0.5	<0.5	<0.5	0.58	1.2
RS-09	3/28/2006	195.63	3.76	191.87		360	11	0.72	3.6	2.5	7.1
RS-09	6/21/2006	195.63	5.40	190.23		860	23	2.9	7.2	21	7.4
RS-09	9/13/2006	195.63	6.45	189.18		350	2.4	<0.5	1.1	4.2	2.9
RS-09	12/21/2006	195.63	5.82	189.81		85	<0.5	<0.5	<0.5	<0.5	0.81
RS-09	3/12/2007	195.63	5.08	190.55		1000	25	12	14	40	7.5
RS-09	6/20/2007	195.63	6.67	188.96		1300	130	4.4	6	20	7.2
RS-09	9/26/2007	195.63	7.45	188.18		1800	310	2.3	5	24	6.3
RS-09	12/18/2007	195.63	6.05	189.58		97	2.5	<0.5	0.56	1.4	0.51
RS-09	3/12/2008	195.63	5.43	190.2		82	1.6	<0.5	<0.5	<0.5	<0.5
RS-09	6/25/2008	195.63	7.03	188.6		2500	450	14	20	81	2.8
RS-09	9/17/2008	195.63	7.81	187.82		3100	830	4.9	7.7	37	4.7
RS-09	12/17/2008	195.63	6.87	188.76		51	1.7	<0.5	<0.5	<0.5	<0.5
RS-09	3/31/2009	195.63	5.64	189.99		72	1	<0.5	<0.5	<0.5	<0.5
RS-09	9/8/2009	195.63	7.45	188.18		2800	700	2.9	5.4	21	2.7
RS-09	3/24/2010	195.63	5.26	190.37		57	3.7	<0.5	<0.5	0.58	<0.5
RS-09	6/30/2010	195.63	6.17	189.46		no samples					
RS-10	12/14/1989										
RS-10	09/04/96										
RS-10	12/11/96										
RS-10	2/21/97										
RS-10	5/28/97										
RS-10	9/2/1997										
RS-10	11/24/1997										
RS-10	2/25/1998										
RS-10	7/8/1998										
RS-10	9/16/1998										
RS-10	11/24/1998										
RS-10	2/23/1999										
RS-10	5/5/1999										
RS-10	8/26/1999	208.46	3.76	204.7		5100	160	340	190	1000	32 *

TABLE 1
GROUNDWATER ELEVATIONS AND CERTIFIED ANALYTICAL LABAORATAORY RESULTS FROM WATER SAMPLES
DESERT PETROLEUM, INC. SITE #793
4035 PARK BOULEVARD, OAKLAND, CALIFORNIA

ID#	DATE SAMPLED	(All concentrations in parts per billion [ug/L, ppb]) (AMSL = Above mean sea level)									
		WELL CASING ELEVATION (FEET AMSL) <small>(CALIFORNIA PUBLIC HEALTH GOAL)</small>	DEPTH TO GROUND WATER (FEET)	GROUND WATER ELEVATION (FEET AMSL)	free phase prod. ft	TPH-G (UG/L)	BENZENE (UG/L) (1.5)	TOLUENE (UG/L) (150)	ETHYL-BENZENE (UG/L) (300)	XYLENES (UG/L) (1800)	MTBE (UG/L) (13)
RS-10	11/10/1999	208.46	3.83	204.63		500	7	2	2	4	<0.5
RS-10	2/9/2000	208.46	0.31	208.15		100	4	3	1	6	<0.5
RS-10	6/30/2000	208.46	2.22	206.24		640	5	2	4	2	<0.5
RS-10	8/8/2000	208.46	2.46	206		460	2	2	2	7	<0.5
RS-10	11/16/2000	208.46	2.46	206		360	1	1	2	<1	<0.5
RS-10	3/8/2001	208.46	2.82	205.64		53	<0.5	<0.5	<0.5	<0.5	<0.5
RS-10	5/31/2001	208.46	4.93	203.53		210	<0.5	<0.5	1.5	5	<5
RS-10	12/18/2001	208.46	2.10	206.36		<50	<0.5	<0.5	<0.5	<0.5	<0.5
RS-10	2/19/2002	208.46	2.29	206.17		<50	<0.5	<0.5	<0.5	<0.5	<0.5
RS-10	5/7/2002	208.46	2.92	205.54		<50	<0.5	<0.5	<0.5	<0.5	<0.5
RS-10	8/6/2002	208.46	4.11	204.35		<50	<0.5	0.7	<0.5	1.6	<0.5
RS-10	11/5/2002	208.46	4.05	204.41		54	<0.5	1.2	<0.5	1.1	<0.5
RS-10	12/12/2002	208.46	6.81	201.65							
RS-10	3/13/2003	208.46	3.00	205.46		<50	<0.5	<0.5	<0.5	<0.5	<0.5
RS-10	5/6/2003	208.46	2.55	205.91		<50	<0.5	<0.5	<0.5	<0.5	<0.5
RS-10	8/13/2003	208.46	3.68	204.78		<50	<0.5	<0.5	<0.5	<0.5	<0.5
RS-10	11/20/2003	208.46	4.45	204.01		<50	<0.5	<0.5	<0.5	<0.5	<0.5
RS-10	1/22/2004	208.46									
RS-10	3/30/2004	208.46	3.05	205.41		<50	<0.5	<0.5	<0.5	<0.5	<0.5
RS-10	6/10/2004	208.46	4.85	203.61		<50	<0.5	<0.5	<0.5	<0.5	<0.5
RS-10	9/28/2004	208.46	6.75	201.71		<50	4.6	<0.5	<0.5	<0.5	<0.5
RS-10	12/8/2004	208.46	1.74	206.72		<50	<0.5	<0.5	<0.5	<0.5	<0.5
RS-10	3/23/2005	208.46	1.85	206.61		<50	<0.5	<0.5	<0.5	<0.5	<0.5
RS-10	6/1/2005	208.46	2.88	205.58		<50	<0.5	<0.5	<0.5	<0.5	<0.5
RS-10	9/21/2005	208.46	4.35	204.11		<50	<0.5	<0.5	<0.5	<0.5	<0.5
RS-10	12/7/2005	208.46	3.38	205.08		<50	<0.5	<0.5	<0.5	<0.5	<0.5
RS-10	3/28/2006	208.46	1.75	206.71		<50	<0.5	<0.5	<0.5	<0.5	<0.5
RS-10	6/21/2006	208.46	2.91	205.55		350	1.10	0.73	2.8	1.9	<0.5
RS-10	9/13/2006	208.46	4.18	204.28		<50	0.86	<0.5	<0.5	<0.5	<0.5
RS-10	12/21/2006	208.46	2.78	205.68		<50	0.86	<0.5	<0.5	<0.5	<0.5
RS-10	3/12/2007	208.46	2.80	205.66		<50	<0.5	<0.5	<0.5	<0.5	<0.5
RS-10	6/20/2007	208.46	4.25	204.21		<50	<0.5	<0.5	<0.5	<0.5	<0.5
RS-10	9/26/2007	208.46	4.38	204.08		150	<0.5	<0.5	2.8	16	<0.5
RS-10	12/18/2007	208.46	4.38	204.08		220	<0.5	<0.5	0.64	8.4	<0.5
RS-10	3/12/2008	208.46	2.97	205.49		<50	<0.5	<0.5	<0.5	<0.5	<0.5
RS-10	6/25/2008	208.46	6.93	201.53		360	0.82	1.1	<0.5	1	<0.5
RS-10	9/17/2008	208.46	6.97	201.49		120	1.1	<0.5	0.78	<0.5	<0.5
RS-10	12/17/2008	208.46	3.72	204.74		<50	<0.5	<0.5	<0.5	<0.5	<0.5
RS-10	3/31/2009	208.46	3.05	205.41		<50	<0.5	<0.5	<0.5	<0.5	<0.5
RS-10	9/8/2009	208.46	7.80	200.66		77	5.6	<0.5	<0.5	<0.5	<0.5
RS-10	3/24/2010	208.46	2.92	205.54		<50	<0.5	<0.5	<0.5	<0.5	<0.5
RS-10	6/30/2010	208.46				no access					
R1	12/14/1989										
R1	09/04/96	227.69	15.00	212.69		1800	1100	3	29	< 10	< 30
R1	12/11/96	227.69	10.30	217.39		<50	<0.5	< 0.5	< 0.5	< 1	4
R1	2/21/97	227.69	11.88	215.81		2500	670	9	3	13	<0.5
R1	5/28/97	227.69	14.03	213.66		24000	4300	36	2000	370	<0.5
R1	9/2/1997	227.69	14.98	212.71		4400	320	6	340	72	20
R1	11/24/1997	227.69	14.06	213.63		100	39	1	18	10	<0.5
R1	2/25/1998	227.69	8.93	218.76		1200	400	8	13	150	<0.5
R1	7/8/1998	227.69	11.36	216.33		68	14	< 0.5	< 0.5	< 1	<1
R1	9/16/1998	227.69	13.30	214.39		16000	3400	92	< 0.5	410	<1
R1	11/24/1998	227.69	10.72	216.97		340	19	1.6	35	9.7	<0.5
R1	2/23/1999	227.69	9.34	218.35		60	16	0.6	5.6	1.2	<0.5
R1	5/5/1999	227.69	11.30	216.39		1300	290	3	150	1	15
R1	8/26/1999	227.69	13.97	213.72		6500	630	<0.5	1300	<1	<1
R1	11/10/1999	227.69	13.73	213.96		480	12	4	22	9	<0.5
R1	2/9/2000	227.69	13.10	214.59		<50	8	<0.5	1	<1	<0.5
R1	6/30/2000	227.69	13.42	214.27		2600	350	35	1900	220	<0.5
R1	8/8/2000	227.69	14.25	213.44		10000	910	76	2100	390	<0.5
R1	3/8/2001	227.69	13.72	213.97		<50	<0.5	<0.5	<0.5	<0.5	<0.5
R1	3/8/2001	227.69	13.72	213.97		<50	<0.5	<0.5	<0.5	<0.5	<0.5

TABLE 1
GROUNDWATER ELEVATIONS AND CERTIFIED ANALYTICAL LABAORATAORY RESULTS FROM WATER SAMPLES
DESERT PETROLEUM, INC. SITE #793
4035 PARK BOULEVARD, OAKLAND, CALIFORNIA

ID#	DATE SAMPLED	(All concentrations in parts per billion [ug/L, ppb]) (AMSL = Above mean sea level)													
		WELL CASING ELEVATION (FEET AMSL) <small>(CALIFORNIA PUBLIC HEALTH GOAL)</small>	DEPTH TO GROUND WATER (FEET)	GROUND WATER ELEVATION (FEET AMSL)	free phase prod. ft	TPH-G (UG/L)	BENZENE (UG/L) (1.5)	TOLUENE (UG/L) (150)	ETHYL-BENZENE (UG/L) (300)	XYLENES (UG/L) (1800)	MTBE (UG/L) (13)				
R1	5/31/2001	227.69	15.77	211.92		3800	400	16	470	67	<5	****			
R1	12/18/2001	227.69	9.90	217.79		<50	<0.5	<0.5	1.5	<0.5	<0.5	****			
R1	2/19/2002	227.69	10.86	216.83		<50	<0.5	<0.5	<0.5	<0.5	<0.5	****			
R1	5/7/2002	227.69	16.17	211.52		53	3.3	<0.5	1	<0.5	<0.5	****			
R1	8/6/2002	227.69	16.83	210.86		<50	<0.5	<0.5	<0.5	<0.5	<0.5	****			
R1	11/5/2002	227.69	16.92	210.77	dry, groundwater deeper than 210.77 foot elevation										
R1	12/12/2002	227.69	16.94	210.75											
R1	3/13/2003	227.69	15.69	212		<50	4.5	<0.5	<0.5	<0.5	<0.5	<0.5	****		
R1	5/6/2003	227.69	10.75	216.94		<50	<0.5	<0.5	<0.5	<0.5	<0.5	<0.5	****		
R1	8/13/2003	227.69	16.04	211.65		430	17	<0.5	1.4	1.1	<0.5	****			
R1	11/20/2003	227.69	dry												
R1	1/22/2004	227.69	14.40	213.29											
R1	3/30/2004	227.69	14.05	213.64		<50	2.8	<0.5	<0.5	<0.5	<0.5	****			
R1	6/10/2004	227.69	15.85	211.84		3200	85	2.6	38	8.3	<0.5	****			
R1	9/28/2004	227.69	15.06	212.63		2000	35	2.2	12	4.4	<0.5	****			
R1	12/8/2004	227.69	9.70	217.99		<50	<0.5	<0.5	<0.5	<0.5	<0.5	****			
R1	3/23/2005	227.69	8.58	219.11		<50	<0.5	<0.5	<0.5	<0.5	<0.5	****			
R1	6/1/2005	227.69	13.30	214.39		330	12	<0.5	1.6	1.4	<0.5	****			
R1	9/21/2005	227.69	14.92	212.77		3400	20	1.3	13	4.4	<0.5	****			
R1	12/7/2005	227.69	15.50	212.19		1100	4.2	0.65	1.5	0.94	<0.5	****			
R1	3/28/2006	227.69	8.82	218.87		<50	<0.5	<0.5	<0.5	<0.5	<0.5	****			
R1	6/21/2006	227.69	11.35	216.34		<50	<0.5	<0.5	<0.5	<0.5	<0.5	****			
R1	9/13/2006	227.69	13.55	214.14		<50	<0.5	<0.5	<0.5	<0.5	<0.5	****			
R1	12/21/2006	227.69	14.35	213.34		<50	<0.5	<0.5	<0.5	<0.5	<0.5	****			
R1	3/12/2007	227.69	11.76	215.93		<50	<0.5	<0.5	<0.5	<0.5	<0.5	****			
R1	6/20/2007	227.69	13.48	214.21		<50	<0.5	<0.5	<0.5	<0.5	<0.5	****			
R1	9/26/2007	227.69	15.08	212.61		<50	<0.5	<0.5	<0.5	<0.5	<0.5	****			
R1	12/18/2007	227.69	15.25	212.44		<50	<0.5	<0.5	<0.5	<0.5	<0.5	****			
R1	3/12/2008	227.69	12.62	215.07		<50	<0.5	<0.5	<0.5	<0.5	<0.5	****			
R1	6/25/2008	227.69	15.92	211.77		<50	<0.5	<0.5	<0.5	<0.5	<0.5	****			
R1	9/17/2008	227.69			no sample water in shoe of casing, not representative										
R1	12/17/2008	227.69			no sample water in shoe of casing, not representative										
R1	3/31/2009	227.69	12.85	214.84		<50	<0.5	<0.5	<0.5	<0.5	<0.5	<0.5	****		
R1	9/8/2009	227.69	15.60	212.09		<50	<0.5	<0.5	<0.5	<0.5	<0.5	<0.5	****		
R1	3/24/2010	227.69	12.40	215.29		<50	<0.5	<0.5	<0.5	<0.5	<0.5	<0.5	****		
R1	6/30/2010	227.69	14.03	213.66		no samples									
R2	12/14/1989														
R2	09/04/96	230.68	13.44	217.24		14000	7600	<10	170	190	<100				
R2	12/11/96	230.68	12.42	218.26		488	300	1	<0.5	30	16				
R2	2/21/97	230.68	10.50	220.18		5700	2100	5	2	10	3	*			
R2	5/28/97	230.68	13.10	217.58		36000	14000	63	260	220	<0.5	*			
R2	9/2/1997	230.68	14.16	216.52		30000	12000	330	1000	790	47	*			
R2	11/24/1997	230.68	14.71	215.97		41000	15000	830	1500	4200	<0.5	*			
R2	2/25/1998	230.68	7.39	223.29		800	400	<0.5	<0.5	15	<0.5	*			
R2	7/8/1998	230.68	11.27	219.41		290	31	<0.5	1	<1	2	*			
R2	9/16/1998	230.68	13.73	216.95		6600	11000	24	<0.5	35	<1	*			
R2	11/24/1998	230.68	11.67	219.01		6100	<0.5	36	<0.5	21	<0.5	*			
R2	2/23/1999	230.68	7.55	223.13		1100	310	3	2	26	<0.5	*			
R2	5/5/1999	230.68	10.89	219.79		11000	5300	7	36	7	8	*			
R2	8/26/1999	227.28	13.14	214.14		6700	940	33	190	240	<1	*			
R2	11/10/1999	227.28	14.42	212.86		5100	2600	160	1800	8100	<0.5	*			
R2	2/9/2000	227.28	12.45	214.83		4700	1400	110	130	340	<0.5	*			
R2	6/30/2000	227.28	12.94	214.34		7100	3200	110	300	480	<0.5	*			
R2	8/8/2000	227.28	13.58	213.7		30000	13000	250	1000	2700	<0.5	*			
R2	11/16/2000	227.28	14.33	212.95		44000	17000	230	790	3600	<0.5	*			
R2	3/8/2001	227.28	11.15	216.13		2300	640	8.6	61	170	<2	****			
R2	5/31/2001	227.28	13.38	213.9		2200	580	12	72	100	<25	****			
R2	12/18/2001	227.28	12.35	214.93		4900	2000	120	44	280	<5	****			
R2	2/19/2002	227.28	11.32	215.96		2100	1200	<5	14	<5	<5	****			
R2	5/7/2002	227.28	13.15	214.13		2500	660	7.5	170	26	<2.5	****			
R2	8/6/2002	227.28	14.51	212.77		6300	1800	150	220	340	<5	****			
R2	11/5/2002	227.28	15.46	211.82		11000	3000	140	57	620	<20	****			

TABLE 1
GROUNDWATER ELEVATIONS AND CERTIFIED ANALYTICAL LABAORATAORY RESULTS FROM WATER SAMPLES
DESERT PETROLEUM, INC. SITE #793
4035 PARK BOULEVARD, OAKLAND, CALIFORNIA

ID#	DATE SAMPLED	(All concentrations in parts per billion [ug/L, ppb]) (AMSL = Above mean sea level)									
		WELL CASING ELEVATION (FEET AMSL)	DEPTH TO GROUND WATER (FEET)	GROUND WATER ELEVATION (FEET AMSL)	free phase prod. ft	TPH-G (UG/L)	BENZENE (UG/L) (1.5)	TOLUENE (UG/L) (150)	ETHYL-BENZENE (UG/L) (300)	XYLENES (UG/L) (1800)	MTBE (UG/L) (13)
(CALIFORNIA PUBLIC HEALTH GOAL)											
R2	12/12/2002	227.28	15.70	211.58							
R2	3/13/2003	227.28	12.96	214.32		580	200	1.2	5.4	3.8	<1
R2	5/6/2003	227.28	11.14	216.14		70	25	<0.5	<0.5	1.3	<0.5
R2	8/13/2003	227.28	14.01	213.27		1800	340	8	49	12	<2
R2	11/20/2003	227.28	15.35	211.93		8000	1400	46	57	490	<5
R2	1/22/2004	227.28	12.10	215.18							
R2	3/30/2004	227.28	11.48	215.8		<50	3	<0.5	<0.5	<0.5	<0.5
R2	6/10/2004	227.28	13.95	213.33		77	7.7	<0.5	<0.5	<0.5	<0.5
R2	9/28/2004	227.28	14.80	212.48		500	120	2	25	2.7	0.71
R2	12/8/2004	227.28	12.25	215.03		100	8.5	<0.5	<0.5	5	<0.5
R2	3/23/2005	227.28	7.82	219.46		57	8.4	<0.5	<0.5	<0.5	<0.5
R2	6/1/2005	227.28	12.14	215.14		85	5.2	<0.5	<0.5	<0.5	<0.5
R2	9/21/2005	227.28	13.97	213.31		900	120	1.3	2.5	4.8	<0.5
R2	12/7/2005	227.28	14.51	212.77		150	8.4	<0.5	<0.5	0.5	<0.5
R2	3/28/2006	227.28	7.30	219.98		<50	7.7	<0.5	<0.5	<0.5	<0.5
R2	6/21/2006	227.28	11.90	215.38		68	4.7	<0.5	<0.5	<0.5	<0.5
R2	9/13/2006	227.28	13.66	213.62		54	0.52	<0.5	<0.5	<0.5	<0.5
R2	12/21/2006	227.28	14.43	212.85		<50	<0.5	<0.5	<0.5	<0.5	<0.5
R2	3/12/2007	227.28	12.37	214.91		210	63	<0.5	1.8	<0.5	<0.5
R2	6/20/2007	227.28	14.08	213.2		1300	250	3.6	2.7	4.1	<0.5
R2	9/26/2007	227.28	15.41	211.87		230	28	<0.5	<0.5	2.5	<0.5
R2	12/18/2007	227.28	15.87	211.41		98	<0.5	<0.5	<0.5	2.5	<0.5
R2	3/12/2008	227.28	11.45	215.83		<50	0.59	<0.5	<0.5	<0.5	<0.5
R2	6/25/2008	227.28	14.98	212.3		79	11	<0.5	<0.5	<0.5	<0.5
R2	9/17/2008	227.28	16.03	211.25		87	1.8	<0.5	5.6	0.92	<0.5
R2	12/17/2008	227.28				no sample water in shoe of casing, not representative					
R2	3/31/2009	227.28	11.42	215.86		<50	5.5	<0.5	<0.5	<0.5	<0.5
R2	9/8/2009	227.28	15.50	211.78		56	<0.5	<0.5	<0.5	<0.5	<0.5
R2	3/24/2010	227.28	11.10	216.18		140	16	<0.5	<0.5	<0.5	<0.5
R2	6/30/2010	227.28	13.30	213.98		no samples					
R3	12/14/1989										
R3	09/04/96	230.32	9.90	220.42		<50	<0.5	<0.5	<0.5	<2	<5
R3	12/11/96	230.32	8.18	222.14		<50	<0.5	<0.5	<0.5	<1	5
R3	2/21/97	230.32	6.76	223.56		340	35	59	8	54	<0.5
R3	5/28/97	230.32	9.98	220.34		<50	<0.5	<0.5	<0.5	<1	<0.5
R3	9/2/1997	230.32	10.86	219.46		<50	4	<0.5	<0.5	<1	<0.5
R3	11/24/1997	230.32	11.20	219.12		not enough water to sample. No sample					
R3	2/25/1998	230.32	3.42	226.9		<50	<0.5	<0.5	<0.5	<1	<0.5
R3	7/8/1998	230.32	8.78	221.54		140	<0.5	<0.5	4	24	<1
R3	9/16/1998	230.32	10.38	219.94		<50	<0.5	<0.5	<0.5	<1	<1
R3	11/24/1998	230.32	11.12	219.2		not enough water to sample. No sample					
R3	2/23/1999	230.32	3.95	226.37		<50	<0.5	<0.5	<0.5	<1	<0.5
R3	5/5/1999	230.32	7.58	222.74		80	9	<0.5	<0.5	<1	6
R3	8/26/1999	227.25	10.76	216.49		<50	2	<0.5	<0.5	<1	1
R3	11/10/1999	227.25	11.09	216.16		140	3	4	1	11	<0.5
R3	2/9/2000	227.25	8.76	218.49		<50	2	<0.5	<0.5	<1	<0.5
R3	6/30/2000	227.25	9.67	217.58		<50	0.7	<0.5	1	1	<0.5
R3	8/8/2000	227.25	10.44	216.81		72	<0.5	<0.5	<0.5	<1	<0.5
R3	11/16/2000	227.25	10.26	216.99		110	4	1	<0.5	3	<0.5
R3	3/8/2001	227.25	6.54	220.71		<50	<0.5	<0.5	<0.5	<0.5	<0.5
R3	5/31/2001	227.25	10.01	217.24		<50	<0.5	<0.5	<0.5	<0.5	<0.5
R3	12/18/2001	227.25	6.79	220.46		<50	<0.5	<0.5	<0.5	<0.5	<0.5
R3	2/19/2002	227.25	7.86	219.39		<50	<0.5	<0.5	<0.5	<0.5	<0.5
R3	5/7/2002	227.25	9.20	218.05		<50	<0.5	<0.5	<0.5	<0.5	<0.5
R3	8/6/2002	227.25	10.62	216.63		<50	<0.5	<0.5	<0.5	<0.5	<0.5
R3	11/5/2002	227.25	11.07	216.18		<50	<0.5	<0.5	<0.5	<0.5	<0.5
R3	12/12/2002	227.25	11.28	215.97							
R3	3/13/2003	227.25	8.69	218.56		<50	<0.5	<0.5	<0.5	<0.5	<0.5
R3	5/6/2003	227.25	8.02	219.23		<50	<0.5	<0.5	<0.5	<0.5	<0.5
R3	8/13/2003	227.25	dry			DRY					
R3	11/20/2003	227.25	dry			DRY					
R3	1/22/2004	227.25	7.30	219.95							

TABLE 1
GROUNDWATER ELEVATIONS AND CERTIFIED ANALYTICAL LABAORATAORY RESULTS FROM WATER SAMPLES
DESERT PETROLEUM, INC. SITE #793
4035 PARK BOULEVARD, OAKLAND, CALIFORNIA

ID#	DATE SAMPLED	(All concentrations in parts per billion [ug/L, ppb]) (AMSL = Above mean sea level)											
		WELL CASING ELEVATION (FEET AMSL)	DEPTH TO GROUND WATER (FEET)	GROUND WATER ELEVATION (FEET AMSL)	free phase prod. ft	TPH-G (UG/L)	BENZENE (UG/L) (1.5)	TOLUENE (UG/L) (150)	ETHYL-BENZENE (UG/L) (300)	XYLENES (UG/L) (1800)	MTBE (UG/L) (13)		
(CALIFORNIA PUBLIC HEALTH GOAL)													
R3	3/30/2004	227.25	7.85	219.4		<50	<0.5	<0.5	<0.5	<0.5	<0.5	****	
R3	6/10/2004	227.25	10.30	216.95		<50	<0.5	<0.5	<0.5	<0.5	<0.5	****	
R3	9/28/2004	227.25	dry		DRY								
R3	12/8/2004	227.25	9.00	218.25		<50	<0.5	<0.5	<0.5	<0.5	<0.5	****	
R3	3/23/2005	227.25	4.90	222.35		<50	<0.5	<0.5	<0.5	<0.5	<0.5	****	
R3	6/1/2005	227.25	8.60	218.65		<50	<0.5	<0.5	<0.5	<0.5	<0.5	****	
R3	9/21/2005	227.25	10.80	216.45		<50	<0.5	<0.5	<0.5	<0.5	<0.5	****	
R3	12/7/2005	227.25	11.12	216.13		no sample water in shoe of casing, not representative							
R3	3/28/2006	227.25	3.72	223.53		<50	<0.5	<0.5	<0.5	<0.5	<0.5	****	
R3	6/21/2006	227.25	8.82	218.43		<50	<0.5	<0.5	<0.5	<0.5	<0.5	****	
R3	9/13/2006	227.25	10.52	216.73		<50	<0.5	<0.5	<0.5	<0.5	<0.5	****	
R3	12/21/2006	227.25	9.97	217.28		<50	<0.5	<0.5	<0.5	<0.5	<0.5	****	
R3	3/12/2007	227.25	7.45	219.8		<50	<0.5	<0.5	<0.5	<0.5	<0.5	****	
R3	6/20/2007	227.25	10.43	216.82		<50	<0.5	<0.5	<0.5	<0.5	<0.5	****	
R3	9/26/2007	227.25				no sample water in shoe of casing, not representative							
R3	12/18/2007	227.25				no sample water in shoe of casing, not representative							
R3	3/12/2008	227.25	7.93	219.32		<50	<0.5	<0.5	<0.5	<0.5	<0.5	****	
R3	6/25/2008	227.25	10.87	216.38		<50	<0.5	<0.5	<0.5	<0.5	<0.5	****	
R3	9/17/2008	227.25				no sample water in shoe of casing, not representative							
R3	12/17/2008	227.25				no sample water in shoe of casing, not representative							
R3	3/31/2009	227.25	7.27	219.98		<50	<0.5	<0.5	<0.5	<0.5	<0.5	****	
R3	9/8/2009	227.25	10.95	216.3		<50	<0.5	<0.5	<0.5	<0.5	<0.5	****	
R3	3/24/2010	227.25	7.22	220.03		<50	<0.5	<0.5	<0.5	<0.5	<0.5	****	
R3	6/30/2010	227.25	9.95	217.3		no samples							
T 1	12/14/1989												
T 1	09/04/96												
T 1	12/11/96												
T 1	2/21/97												
T 1	5/28/97												
T 1	9/2/1997												
T 1	11/24/1997												
T 1	2/25/1998												
T 1	7/8/1998												
T 1	9/16/1998												
T 1	11/24/1998												
T 1	2/23/1999												
T 1	5/5/1999												
T 1	8/26/1999	195.11	2.44	192.67		40000	7200	5000	950	8100	53	*	
T 1	11/10/1999	195.11	2.23	192.88		46000	5600	3600	910	6500	<0.5		
T 1	2/9/2000	195.11	2.22	192.89		35000	2900	5700	720	6600	<0.5		
T 1	6/30/2000	195.11	2.22	192.89		30000	3400	3200	950	4600	<5		
T 1	8/8/2000	195.11	2.73	192.38		8900	1600	760	260	870	<5		
T 1	11/16/2000	195.11	2.72	192.39		4000	1300	92	80	290	<0.5		
T 1	3/8/2001	195.11	2.12	192.99		25000	4400	3400	770	3200	26	****	
T 1	5/31/2001	195.11	2.30	192.81		8900	940	210	340	1500	<50	****	
T 1	12/18/2001	195.11	2.20	192.91		48000	3700	5500	1200	5300	24	****	
T 1	2/19/2002	195.11	1.96	193.15		64000	8600	6000	1700	6800	55	****	
T 1	5/7/2002	195.11	2.22	192.89		41000	9200	910	2000	6200	62	****	
T 1	8/6/2002	195.11	2.32	192.79		28000	5500	240	1300	2600	32	****	
T 1	11/5/2002	195.11	2.52	192.59		11000	3000	65	660	610	18	****	
T 1	12/12/2002	195.11	2.55	192.56									
T 1	3/13/2003	195.11	2.23	192.88		930	150	17	23	60	2.6	****	
T 1	5/6/2003	195.11	2.37	192.74		6800	1000	230	310	820	10	****	
T 1	8/13/2003	195.11	2.41	192.7		9600	1500	110	440	910	10	****	
T 1	11/20/2003	195.11	2.50	192.61		10000	1800	120	520	510	11	****	
T 1	1/22/2004	195.11											
T 1	3/30/2004	195.11				15000	1800	660	610	2000	8.6	****	
T 1	6/10/2004	195.11	2.40	192.71		5500	570	2	240	130	2.7	****	
T 1	9/28/2004	195.11	2.52	192.59		8700	2600	100	450	15	15	****	
T 1	12/8/2004	195.11	1.96	193.15		2900	820	32	14	47	6.9	****	
T 1	3/23/2005	195.11	car			2800	220	3	120	76	1.7	****	
T 1	6/1/2005	195.11	2.25	192.86		46000	14000	650	1900	2900	54	****	

TABLE 1
GROUNDWATER ELEVATIONS AND CERTIFIED ANALYTICAL LABAORATAORY RESULTS FROM WATER SAMPLES
DESERT PETROLEUM, INC. SITE #793
4035 PARK BOULEVARD, OAKLAND, CALIFORNIA

ID#	DATE SAMPLED	(All concentrations in parts per billion [ug/L, ppb]) (AMSL = Above mean sea level)										
		WELL CASING ELEVATION (FEET AMSL) (CALIFORNIA PUBLIC HEALTH GOAL)	DEPTH TO GROUND WATER (FEET)	GROUND WATER ELEVATION (FEET AMSL)	free phase prod. ft	TPH-G (UG/L)	BENZENE (UG/L) (1.5)	TOLUENE (UG/L) (150)	ETHYL-BENZENE (UG/L) (300)	XYLENES (UG/L) (1800)	MTBE (UG/L) (13)	
T 1	9/21/2005	195.11	2.42	192.69		17000	4500	81	620	200	28	****
T 1	12/7/2005	195.11	2.26	192.85		18000	4000	480	780	1100	25	****
T 1	3/28/2006	195.11	car			27000	4400	1600	890	2700	20	****
T 1	6/21/2006	195.11	2.48	192.63		14000	5200	310	270	680	19	****
T 1	9/13/2006	195.11	2.43	192.68		12000	5100	88	230	320	22	****
T 1	12/21/2006	195.11	2.28	192.83		18000	4600	620	850	2000	21	****
T 1	3/12/2007	195.11	2.24	192.87		19000	4700	750	870	2300	16	****
T 1	6/20/2007	195.11	2.47	192.64		12000	4300	130	170	250	18	****
T 1	9/26/2007	195.11	2.52	192.59		10000	4200	63	45	68	14	****
T 1	12/18/2007	195.11	1.75	193.36		12000	3000	450	360	480	15	****
T 1	3/12/2008	195.11	2.23	192.88		22000	6600	1200	960	2300	25	****
T 1	6/25/2008	195.11	2.55	192.56		13000	5200	160	300	280	18	****
T 1	9/17/2008	195.11	3.12	191.99		8600	3400	47	29	81	9.4	****
T 1	12/17/2008	195.11	2.32	192.79		5600	1500	130	140	310	4.9	****
T 1	3/31/2009	195.11	2.32	192.79		24000	5800	830	1300	3700	16	****
T 1	9/8/2009	195.11	2.90	192.21		7900	2700	57	50	180	7.8	****
T 1	3/24/2010	195.11	2.25	192.86		22000	5800	640	1200	2500	18	****
T 1	6/30/2010	195.11				no access, parked cars						
T 2	1/22/2004	195.3	2.54	192.76		see T1 for sample results						
T 2	3/30/2004	195.3	2.50	192.8		see T1 for sample results						
T 2	6/10/2004	195.3	2.60	192.7		see T1 for sample results						
T 2	9/28/2004	195.3	car			see T1 for sample results						
T 2	12/8/2004	195.3	2.04	193.26		see T1 for sample results						
T 2	3/23/2005	195.3	car			see T1 for sample results						
T 2	6/1/2005	195.3	car			see T1 for sample results						
T 2	9/21/2005	195.3	car			see T1 for sample results						
T 2	12/7/2005	195.3	car			see T1 for sample results						
T 2	3/28/2006	195.3	2.00	193.3		see T1 for sample results						
T 2	6/21/2006	195.3	car			see T1 for sample results						
T 2	9/13/2006	195.3	car			see T1 for sample results						
T 2	12/21/2006	195.3	car			see T1 for sample results						
T 2	3/12/2007	195.3	car			see T1 for sample results						
T 2	6/20/2007	195.3	car			see T1 for sample results						
T 2	9/26/2007	195.3	car			see T1 for sample results						
T 2	12/18/2007	195.3	car			see T1 for sample results						
T 2	3/12/2008	195.3	car			see T1 for sample results						
T 2	6/25/2008	195.3	car			see T1 for sample results						
T 2	9/17/2008	195.3	car			see T1 for sample results						
T 2	12/17/2008	195.3	car			see T1 for sample results						
T 2	3/31/2009	195.3	car			see T1 for sample results						
T 2	9/8/2009	195.3	car			see T1 for sample results						
T 2	3/24/2010	195.3	car			see T1 for sample results						
T 2	6/30/2010	195.3	car									
T 3	1/22/2004	202.38				see T1 for sample results						
T 3	6/10/2004	202.38	9.80	192.58		see T1 for sample results						
T 3	9/28/2004	202.38	9.90	192.48		see T1 for sample results						
T 3	12/8/2004	202.38	9.24	193.14		see T1 for sample results						
T 3	3/23/2005	202.38	car			see T1 for sample results						
T 3	6/1/2005	202.38	car			see T1 for sample results						
T 3	9/21/2005	202.38	car			see T1 for sample results						
T 3	12/7/2005	202.38	car			see T1 for sample results						
T 3	3/28/2006	202.38	car			see T1 for sample results						
T 3	6/21/2006	202.38	car			see T1 for sample results						
T 3	9/13/2006	202.38	car			see T1 for sample results						
T 3	12/21/2006	202.38	car			see T1 for sample results						
T 3	3/12/2007	202.38	car			see T1 for sample results						
T 3	6/20/2007	202.38	car			see T1 for sample results						
T 3	9/26/2007	202.38	car			see T1 for sample results						
T 3	12/18/2007	202.38	car			see T1 for sample results						
T 3	3/12/2008	202.38	car			see T1 for sample results						
T 3	6/25/2008	202.38	car			see T1 for sample results						

TABLE 1
GROUNDWATER ELEVATIONS AND CERTIFIED ANALYTICAL LABAORATAORY RESULTS FROM WATER SAMPLES
DESERT PETROLEUM, INC. SITE #793
4035 PARK BOULEVARD, OAKLAND, CALIFORNIA

ID#	DATE SAMPLED	(All concentrations in parts per billion [ug/L, ppb]) (AMSL = Above mean sea level)									
		WELL CASING ELEVATION (FEET AMSL)	DEPTH TO GROUND WATER (FEET)	GROUND WATER ELEVATION (FEET AMSL)	free phase prod. ft	TPH-G (UG/L)	BENZENE (UG/L) (1.5)	TOLUENE (UG/L) (150)	ETHYL-BENZENE (UG/L) (300)	XYLENES (UG/L) (1800)	MTBE (UG/L) (13)
(CALIFORNIA PUBLIC HEALTH GOAL)											
T 3	9/17/2008	202.38	car			see T1 for sample results					
T 3	12/17/2008	202.38	car			see T1 for sample results					
T 3	3/31/2009	202.38	car			see T1 for sample results					
T 3	9/8/2009	202.38	car			see T1 for sample results					
T 3	3/24/2010	202.38	car			see T1 for sample results					
T 3	6/30/2010	202.38	car								
T4	1/22/2004	197.48	4.70	192.78		see T1 for sample results					
T4	3/30/2004	197.48	4.66	192.82		see T1 for sample results					
T4	6/10/2004	197.48	4.76	192.72		see T1 for sample results					
T4	9/28/2004	197.48	4.86	192.62		see T1 for sample results					
T4	12/8/2004	197.48	4.21	193.27		see T1 for sample results					
T4	3/23/2005	197.48	4.35	193.13		see T1 for sample results					
T4	6/1/2005	197.48	car			see T1 for sample results					
T4	9/21/2005	197.48	car			see T1 for sample results					
T4	12/7/2005	197.48	car			see T1 for sample results					
T4	3/28/2006	197.48	car			see T1 for sample results					
T4	6/21/2006	197.48	car			see T1 for sample results					
T4	9/13/2006	197.48	car			see T1 for sample results					
T4	12/21/2006	197.48	car			see T1 for sample results					
T4	3/12/2007	197.48	car			see T1 for sample results					
T4	6/20/2007	197.48	car			see T1 for sample results					
T4	9/26/2007	197.48	car			see T1 for sample results					
T4	12/18/2007	197.48	car			see T1 for sample results					
T4	3/12/2008	197.48	car			see T1 for sample results					
T4	6/25/2008	197.48	car			see T1 for sample results					
T4	9/17/2008	197.48	car			see T1 for sample results					
T4	12/17/2008	197.48	car			see T1 for sample results					
T4	3/31/2009	197.48	car			see T1 for sample results					
T4	9/8/2009	197.48	car			see T1 for sample results					
T4	3/24/2010	197.48	car			see T1 for sample results					
T4	6/30/2010	197.48	car								
LF 1	1/22/2004	226.59	29.12	197.47							
LF 1	3/30/2004	226.59	26.45	200.14		<50	<0.5	<0.5	<0.5	<0.5	****
LF 1	6/10/2004	226.59	27.57	199.02		<50	<0.5	<0.5	<0.5	<0.5	****
LF 1	9/28/2004	226.59	28.72	197.87		<50	<0.5	<0.5	<0.5	<0.5	****
LF 1	12/8/2004	226.59	car								
LF 1	3/23/2005	226.59	car								
LF 1	6/1/2005	226.59	car								
LF 1	9/21/2005	226.59	car								
LF 1	12/7/2005	226.59	26.67	199.92		<50	<0.5	<0.5	<0.5	<0.5	****
LF 1	3/28/2006	226.59	25.25	201.34		<50	<0.5	<0.5	<0.5	<0.5	****
LF 1	6/21/2006	226.59	23.05	203.54		<50	<0.5	<0.5	<0.5	<0.5	****
LF 1	9/13/2006	226.59	29.23	197.36		<50	<0.5	<0.5	<0.5	<0.5	****
LF 1	12/21/2006	226.59	32.12	194.47		<50	<0.5	<0.5	<0.5	<0.5	****
LF 1	3/12/2007	226.59	31.47	195.12		<50	<0.5	<0.5	<0.5	<0.5	****
LF 1	6/20/2007	226.59	32.72	193.87		<50	<0.5	<0.5	<0.5	<0.5	****
LF 1	9/26/2007	226.59	31.82	194.77		<50	<0.5	<0.5	<0.5	<0.5	****
LF 1	12/18/2007	226.59			car						
LF 1	3/12/2008	226.59	32.06	194.53		<50	<0.5	<0.5	<0.5	<0.5	****
LF 1	6/25/2008	226.59			well is no longer there						

ND BELOW LABORATORY DETECTION LIMITS
TPH-G TOTAL PETROLEUM HYDROCARBONS AS GASOLINE
* MTBE results confirmed by EPA Method 8260 (GC/MS)
** LAB REPORT HAD RS-6 AND RS-7 MISLABELED, RESAMPLE ON 7/30/98 CONFIRMED.
WELL CASING ELEVATION SURVEY 8-27-99, WADE HAMMOND No.6163,BENCH MARK CITY OF OAKLAND #2814
**** SAMPLES ANALYZED USING EPA METHOD 8260B

TABLE 2
GROUNDWATER REMOVAL
FORMER DP #793
4035 PARK BLVD., OAKLAND, CALIFORNIA

DATE PURGED	METER READING IN GALLONS RS5	METER READING IN GALLONS TRENCH	DEPTH TO TOP OF WATER IN FEET T1	GALLONS PURGED T1 and/or 1/4ly samples in GALLONS	ACCUMULATED GALLONS REMOVED FROM TRENCH & WELLS in GALLONS	Accumulated gallons removed from RS5 Gallons	TOTAL GALLONS REMOVED	INFLUENT CONCENTRATIONS EPA METHOD 8020 - 8260B						Sample Location	
								TPHg ug/L	BENZENE ug/L	TOLUENE ug/L	ETHYL-BENZENE ug/L	XYLENES ug/L	MTBE ug/L		
1/7/2010	2717599.0	2717599.0		0	93498	1530255.4	1623753.2								
1/14/2010	2720962.5	2720962.5		0	93498	1533618.9	1627116.7								
1/22/2010	2725261.5	2725261.5		0	93498	1537917.9	1631415.7								
1/28/2010	2729187.5	2729187.5		0	93498	1541843.9	1635341.7								
2/3/2010	2732874.5	2732874.5		0	93498	1545530.9	1639028.7								
2/12/2010	2738225.5	2738225.5		0	93498	1550881.9	1644379.7								
2/17/2010	2741421.0	2741421.0		0	93498	1554077.4	1647575.2								
2/25/2010	2746707.5	2746707.5		0	93498	1559363.9	1652861.7								
3/2/2010	2750612.5	2750612.5		0	93498	1563268.9	1656766.7								
3/11/2010	2758072.5	2758072.5		0	93498	1570728.9	1664226.7								
3/16/2010	2762232.5	2762232.5		0	93498	1574888.9	1668386.7								
3/24/2010	2768886.5	2768886.5		55	93553	1581542.9	1675095.7	1700	200	29	10	110	2.6	RS-5	
4/1/2010	2774798.5	2774798.5		0	93553	1587399.9	1680952.7								
4/10/2010	2781930.5	2781930.5		0	93553	1594531.9	1688084.7								
4/18/2010	2787977.5	2787977.5		0	93553	1600578.9	1694131.7								
4/21/2010	2789784.5	2789784.5		0	93553	1602385.9	1695938.7								
4/28/2010	2793756.5	2793756.5		0	93553	1606357.9	1699910.7								
5/10/2010	2796994.5	2796994.5		0	93553	1609595.9	1703148.7	pull pump, very clogged, needs shop cleaning.							
6/10/2010	2796996.5	2796996.5		0	93553	1609597.9	1703150.7	reinstall pump after cleaning.							
6/18/2010	2804029.3	2804029.3		0	93553	1616630.7	1710183.5								
6/23/2010	2808403.5	2808403.5		0	93553	1621004.9	1714557.7	pin hole leak in carbon, turn system off.							
6/30/2010	2808417.9	2808417.9		0	93553	1621019.3	1714572.1	280	6.3	1.1	<0.5	19	<0.5	RS-5	
6/30/2010	turn system on to obtain samples, then turn system off, remove pump and pump controller.							suspend sewer discharge							

ug/L micrograms per liter (parts per billion) mg/Kg milligrams per kilogram (parts per million) * SAMPLED ON AUGUST 26, 1999
 mg/L milligrams per liter (parts per million) TPHg TOTAL PETROLEUM HYDROCARBONS GASOLINE RANGE T1 Receptor Trench Well
 WESTERN GEO-ENGINEERS MTBE METHYL TERTIARY BUTYL ETHER RS5 Monitor Well RS5 (pumping well)

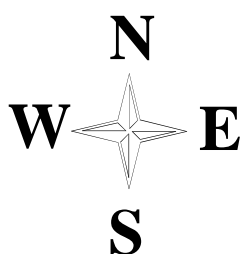
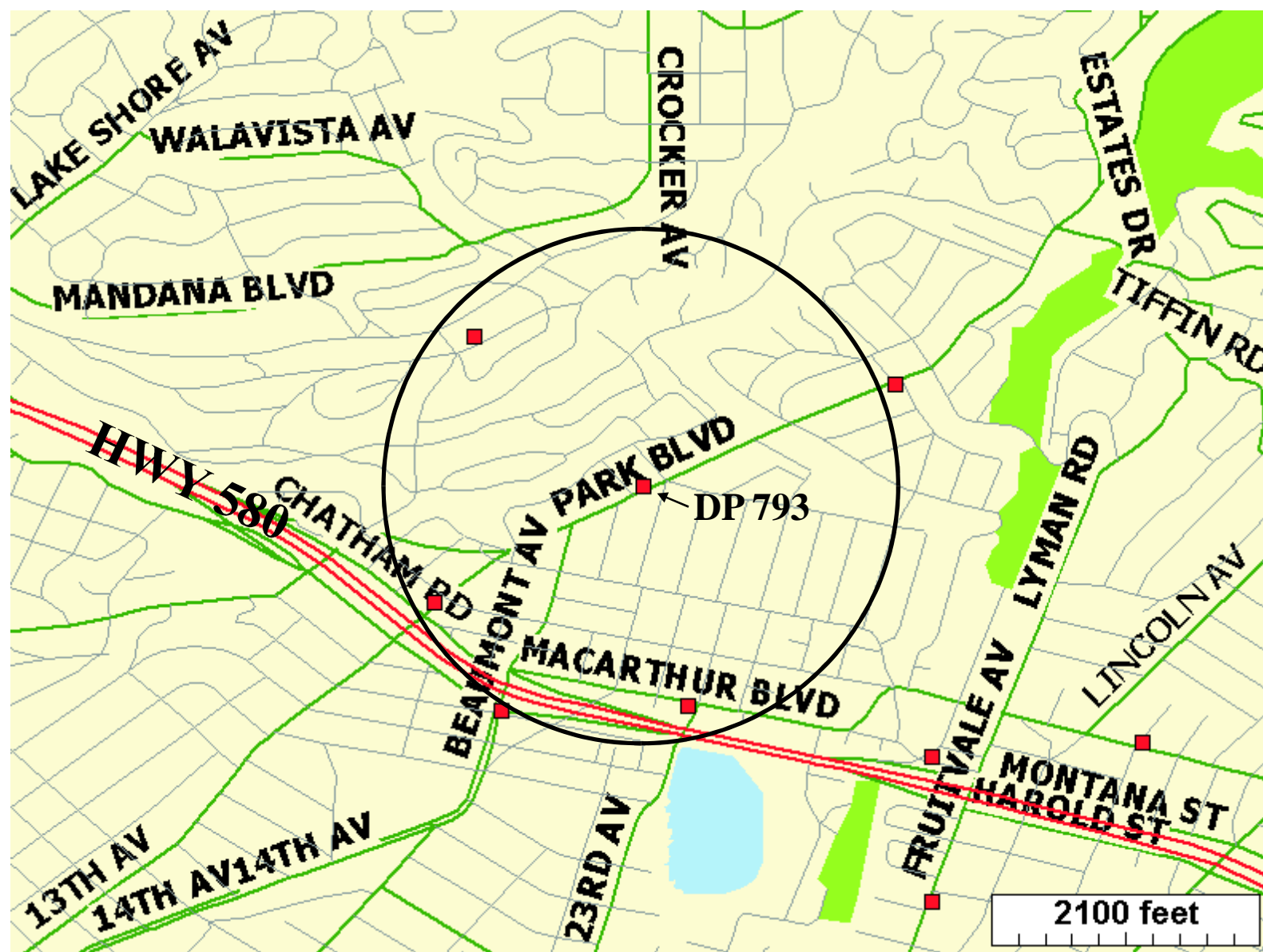


FIGURE 1
 GEOTRACKER
 AREA WELL & LUST MAP
 DP 793
 4035 PARK BLVD.
 OAKLAND, CA

- LUST SITES
- WELLS

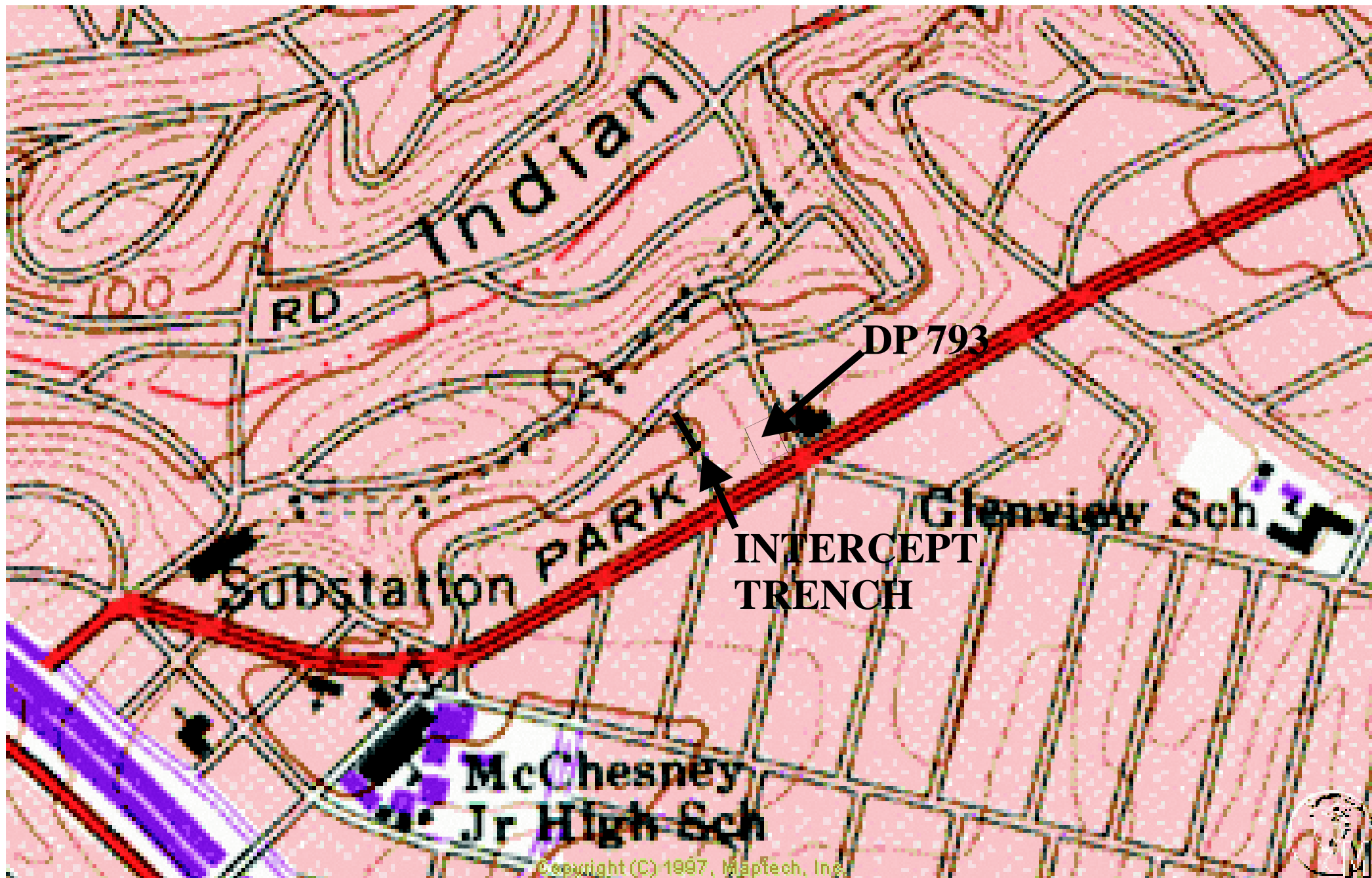


FIGURE 2
PORTION OF OAKLAND EAST 7.5 MINUTE USGS TOPOGRAPHIC MAP



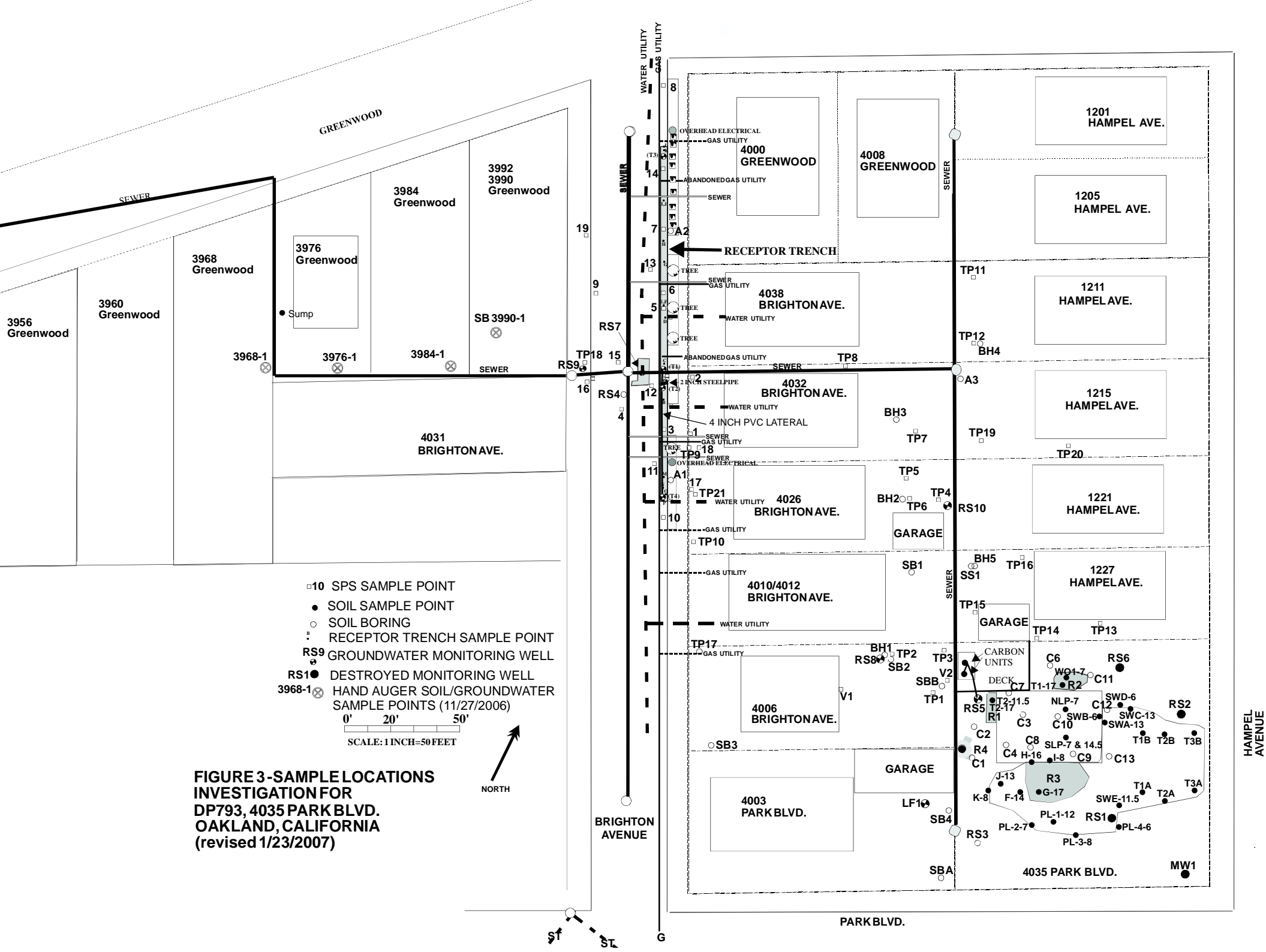


FIGURE 3-SAMPLE LOCATIONS INVESTIGATION FOR DP793, 4035 PARK BLVD. OAKLAND, CALIFORNIA (revised 1/23/2007)



ST ST G

HAMPEL AVENUE

PARK BLVD.

BRIGHTON AVENUE

4003 PARK BLVD.

4006 BRIGHTON AVE.

4010/4012 BRIGHTON AVE.

4026 BRIGHTON AVE.

4032 BRIGHTON AVE.

4038 BRIGHTON AVE.

4000 GREENWOOD

4008 GREENWOOD

1201 HAMPEL AVE.

1205 HAMPEL AVE.

1211 HAMPEL AVE.

1215 HAMPEL AVE.

1221 HAMPEL AVE.

1227 HAMPEL AVE.

4035 PARK BLVD.

MW1

GARAGE

LF10

SBA

SB4

SB3

V1

TP17

TP1

TP2

TP3

TP4

TP5

TP6

TP7

TP8

TP9

TP10

TP11

TP12

TP13

TP14

TP15

TP16

TP18

TP19

TP20

TP21

TP22

TP23

TP24

TP25

TP26

TP27

TP28

TP29

TP30

TP31

TP32

TP33

TP34

TP35

TP36

TP37

TP38

TP39

TP40

TP41

TP42

TP43

TP44

TP45

TP46

TP47

TP48

TP49

TP50

TP51

TP52

TP53

TP54

TP55

TP56

TP57

TP58

TP59

TP60

TP61

TP62

TP63

TP64

TP65

TP66

TP67

TP68

TP69

TP70

TP71

TP72

TP73

TP74

TP75

TP76

TP77

TP78

TP79

TP80

TP81

TP82

TP83

TP84

TP85

TP86

TP87

TP88

TP89

TP90

TP91

TP92

TP93

TP94

TP95

TP96

TP97

TP98

TP99

TP100

TP101

TP102

TP103

TP104

TP105

TP106

TP107

TP108

TP109

TP110

TP111

TP112

TP113

TP114

TP115

TP116

TP117

TP118

TP119

TP120

TP121

TP122

TP123

TP124

TP125

TP126

TP127

TP128

TP129

TP130

TP131

TP132

TP133

TP134

TP135

TP136

TP137

TP138

TP139

TP140

TP141

TP142

TP143

TP144

TP145

TP146

TP147

TP148

TP149

TP150

TP151

TP152

TP153

TP154

TP155

TP156

TP157

TP158

TP159

TP160

TP161

TP162

TP163

TP164

TP165

TP166

TP167

TP168

TP169

TP170

TP171

TP172

TP173

TP174

TP175

TP176

TP177

TP178

TP179

TP180

TP181

TP182

TP183

TP184

TP185

TP186

TP187

TP188

TP189

TP190

TP191

TP192

TP193

TP194

TP195

TP196

TP197

TP198

TP199

TP200

TP201

TP202

TP203

TP204

TP205

TP206

TP207

TP208

TP209

TP210

TP211

TP212

TP213

TP214

TP215

TP216

TP217

TP218

TP219

TP220

TP221

TP222

TP223

TP224

TP225

TP226

TP227

TP228

TP229

TP230

TP231

TP232

TP233

TP234

TP235

TP236

TP237

TP238

TP239

TP240

TP241

TP242

TP243

TP244

TP245

TP246

TP247

TP248

TP249

TP250

TP251

TP252

TP253

TP254

TP255

TP256

TP257

TP258

TP259

TP260

TP261

TP262

TP263

TP264

TP265

TP266

TP267

TP268

TP269

TP270

TP271

TP272

TP273

TP274

TP275

TP276

TP277

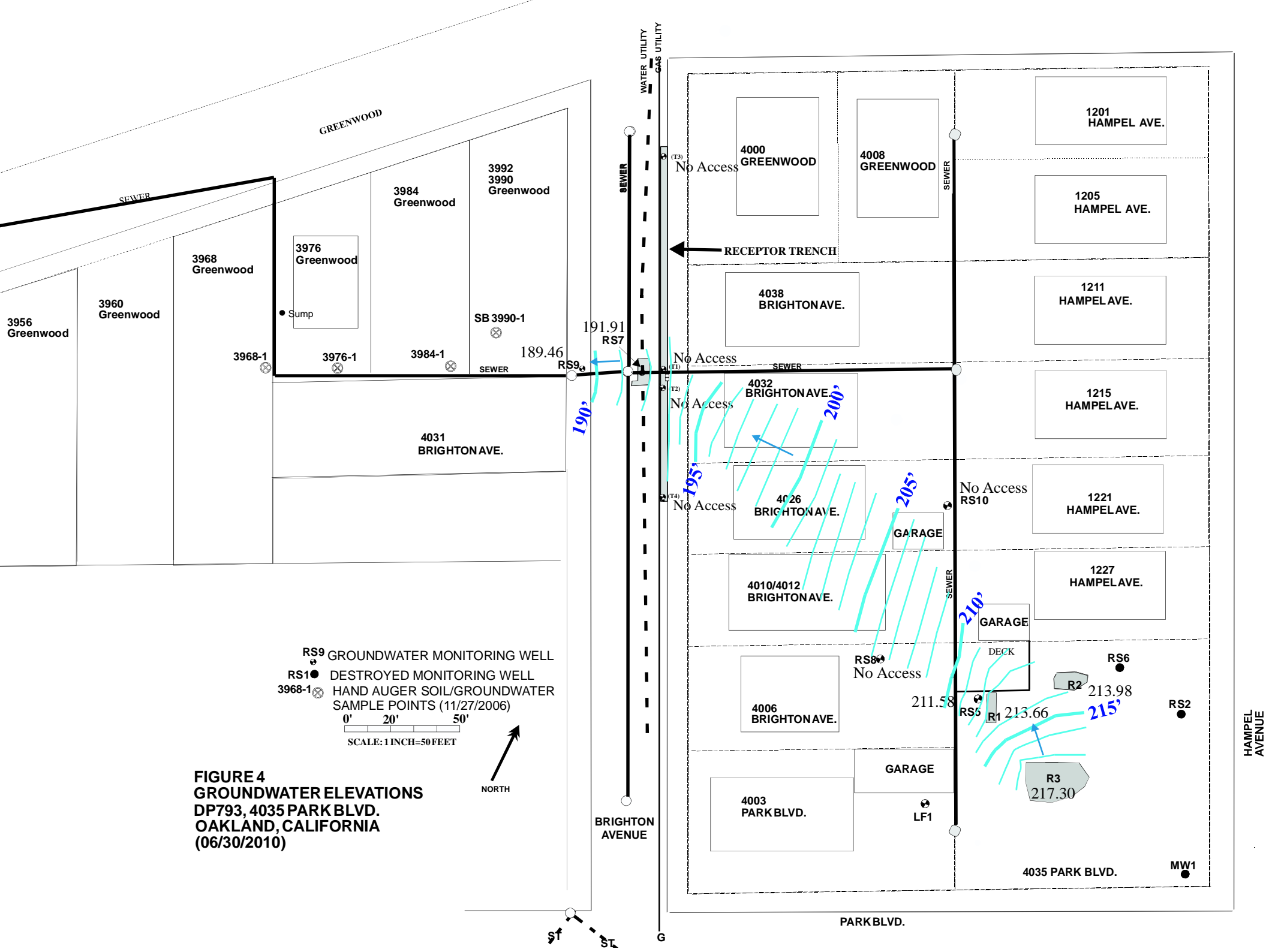
TP278

TP279

TP280

TP281

TP282</



**FIGURE 4
 GROUNDWATER ELEVATIONS
 DP793, 4035 PARK BLVD.
 OAKLAND, CALIFORNIA
 (06/30/2010)**

RS9 GROUNDWATER MONITORING WELL
 RS1 DESTROYED MONITORING WELL
 3968-1 HAND AUGER SOIL/GROUNDWATER
 SAMPLE POINTS (11/27/2006)

0' 20' 50'

SCALE: 1 INCH=50 FEET



ST ST G

HAMPEL AVENUE

APPENDIX A.

METHODS AND PROCEDURES, QA/QC

This Appendix documents the specific methods, procedures, and materials used to collect and analyze ground water samples.

Gauging and Measuring Monitor Wells.

Prior to sampling a well, WEGE personnel obtain two measurements: the depth to ground water and the product thickness using a battery powered depth to water-product interface probe and or by using a specially designed bailer. The probe is lowered into the well casing until the instrument signals that the top of water has been reached. The distance from the top of water to the top of casing is read from the tape calibrated in 0.01 foot intervals for accuracy to 0.01 foot, that is attached to the probe. The measured distance is subtracted from the established elevation at the top of casing to determine the elevation of ground water with respect to mean sea level.

The probe is washed with TSP and rinsed in distilled water before each measurement. WEGE has designed and built bailers that will collect a sample of the contents of a well to show the exact thickness of any floating product.

Purging Standing Water from Monitor Wells

If no product is present, WEGE personnel purge the well. This is accomplished by removing ground water from the well until the water quality parameters (temperature, pH, and conductivity) stabilize, or until the well is emptied of water. Periodic measurements of ground water temperature, pH, and conductivity were taken with a Hydac Monitor or other meter and recorded along with the volume of ground water removed from the well. Purging is done by one or more methods singularly or in combination. Bailers, pneumatic or electric sample pumps, or vacuum pump tanks or trucks may be used. The usual amount of water removed is three well volumes. The water collected during purging is either safely stored onsite for later disposition, transported to an approved onsite or offsite sewer discharge system, or an approved onsite or offsite treatment system.

Collection of Water Sample for Analysis

The well is allowed to recover after purging and a ground water sample is collected. A fresh bailer is used to collect enough water for the requirements of the laboratory for the analyses needed or required. The water samples are decanted from the bailer into the appropriate number and size containers. These containers are furnished pre-cleaned to exact EPA protocols, with and without preservatives added, by the analytical laboratory or a chemical supply company. The bottles are filled, with no headspace, and then capped with plastic caps with teflon liners.

The vials or bottles containing the ground water samples are labeled with site name, station, date, time, sampler, and analyses to be performed, and documented on a chain of custody form. They were placed in ziplock bags and stored in a chest cooled to 4°C with ice. The preserved samples are chain of custody delivered to the chosen laboratory.

Analytical Results

TPH is the abbreviations used for Total Petroleum Hydrocarbons used by the laboratories for water and soil analyses. The letter following TPH indicates a particular distinction or grouping for the results. The letters "g", "d", "k", or "o" indicates gasoline, diesel, kerosene, or oil, respectively, ie. TPH-d for diesel range TPH.

BTEX or MTBE are acronyms or abbreviations used for Benzene, Toluene, Ethylbenzene and all of the Xylenes (BTEX) and Methyl Tertiary Butyl Ether (MTBE), respectively.

MBTEX is the designation for the combination of the above five compounds.

The less than symbol, <, used with a "parts per value" indicates the lower detection limit for a given analytical result and the level, if present, of that particular analyte is below or less than that lower detection limit.

Other abbreviations commonly used are ppm, ppb, mg/Kg, ug/Kg, ml/l and ul/l are parts per million, parts per billion, milligrams per kilogram, micrograms per kilogram, milliliters per liter, microliters per liter, respectively.

Chain of Custody Documentation

All water samples that are collected by WEGE and transported to a certified analytical laboratory are accompanied by chain-of-custody (COC) documentation. This documentation is used to record the movement and custody of a sample from collection in the field to final analysis and storage. Samples to be analyzed at the certified laboratory were logged on the COC sheet provided by the laboratory. The same information provided on the sample labels (site name, sample location, date, time, and analysis to be performed) is also noted on the COC form. Each person relinquishing custody of the sample set signs the COC form indicating the date and time of the transfer to the recipient. A copy of the COC follows the samples or their extracts throughout the laboratory to aid the analyst in identifying the samples and to assure analysis within holding times.

Copies of the COC documentation are included with the laboratory results in Appendix B of this report.

FORMER DESERT PETROLEUM SITE DP 793
 4035 PARK BLVD.
 OAKLAND, CALIFORNIA 94602
 WASTE WATER DISCHARGE PERMIT NUMBER 5043550



WASTE WATER PRETREATMENT, 2 IN SERIES CARBON WATER SCRUB UNITS
 PEAK HOURLY DISCHARGE 2 GPM, DAILY 2880 GALLONS

DATE 6-30-10

REASON FOR SITE VISIT Suspend Sewer discharge

TRENCH WELL T1					
TIME	PID	DTW	pH	TEMP.	COND.
			None		
			None		
			None		

TRENCH WELL T2				
PID	DTW	pH	TEMP.	COND.
		None	None	
		None		
		None		

TRENCH WELL T3				
PID	DTW	pH	TEMP.	COND.
		None	None	
		None		
		None		

TRENCH WELL T4				
PID	DTW	pH	TEMP.	COND.
		None		
		None		
		None		

DEPTH TO WATER

TIME	RS1	RS2	RS5	RS6
	X	X	6.03	None
				None
				None

RS7	RS8	RS9	RS10
4.08	None	6.07	None
None		None	None
None		None	None

R1	R2	R3
14.63	13.30	9.95

TIME	PID	DTW	pH	TEMP.	COND.

COMMENTS Semi Annual Sample for Sewer discharge. Street system off. Remove pump, make make
Perms controls
 ELECTRIC METER 12830
 WATER METER 0602871.4
0602657.5

WASTEWATER		
INFLUENT	EFFLUENT	
TIME	8:00	8:16
pH	7.07	7.97
Conductivity	705	354
Temperature	20.5	22.1
PH	357	296

SAMPLE(S) Semi Annual Sewer

SITE MONITORED BY: Com Love

TIME
 pH
 Conductivity
 Temperature
 PH

WATER TREATMENT
 RS5 FLOW RATE _____ GALLONS/ _____ MINUTES
 T1 FLOW RATE _____ GALLONS/ _____ MINUTES
 T2 FLOW RATE _____ GALLONS/ _____ MINUTES

GALLONS PURGED _____
 GALLONS PURGED _____

PRESSURE WATER CARBONS #1 2-5 PSI #2 X PSI

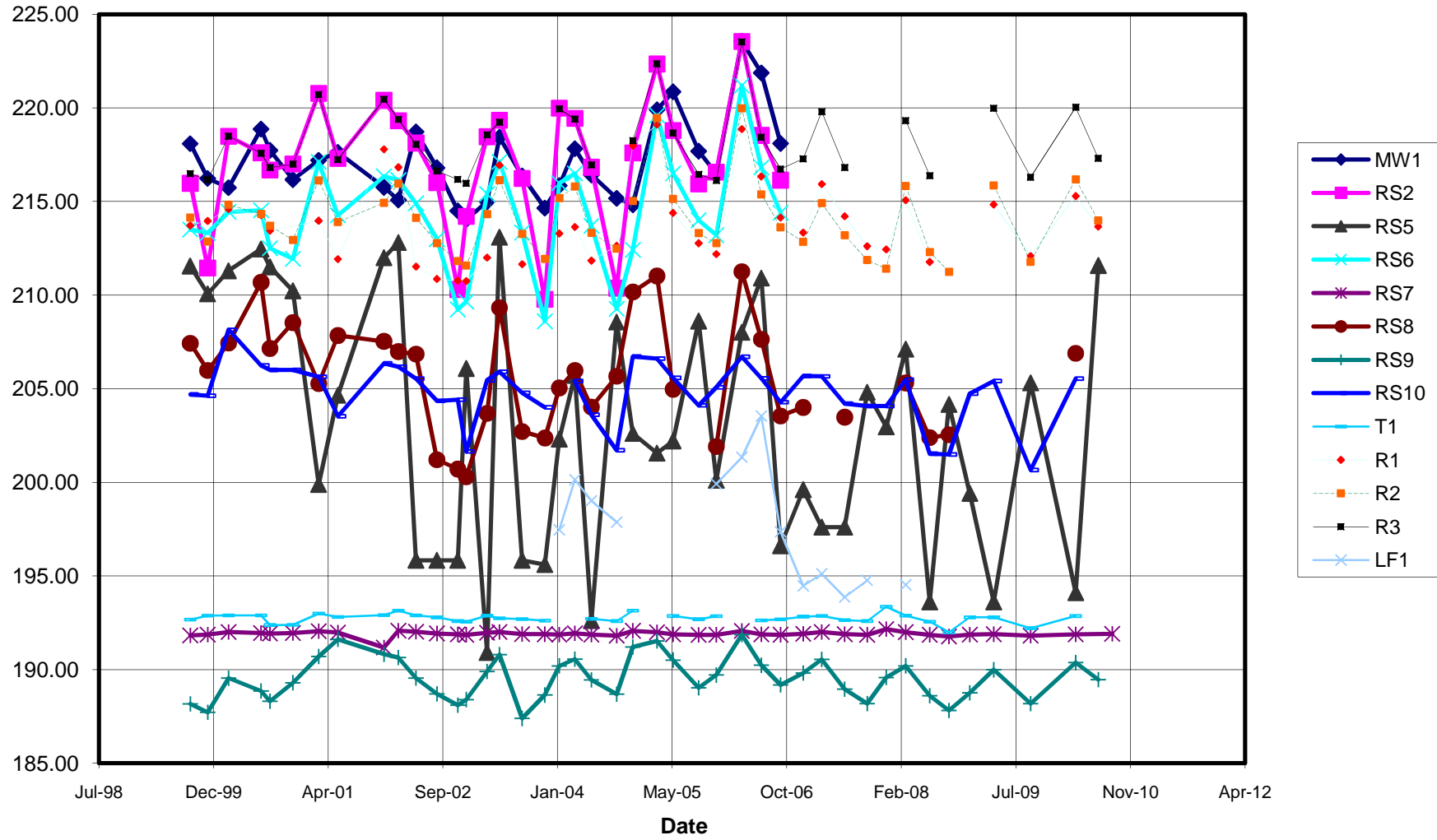
WATER PHASE CARBON UNITS INSPECTION COMMENTS #1 good - 2 Carbons need to be removed.

CONDITION OF COMPOUND COMMENTS _____
 Acceptance of water phase carbon units only if completely flooded with water yes no - return to carbon manufacturer
 Acceptance of water phase carbon units only if pH is less than 8.5 and containers are in good condition yes no - return to carbon manufacturer

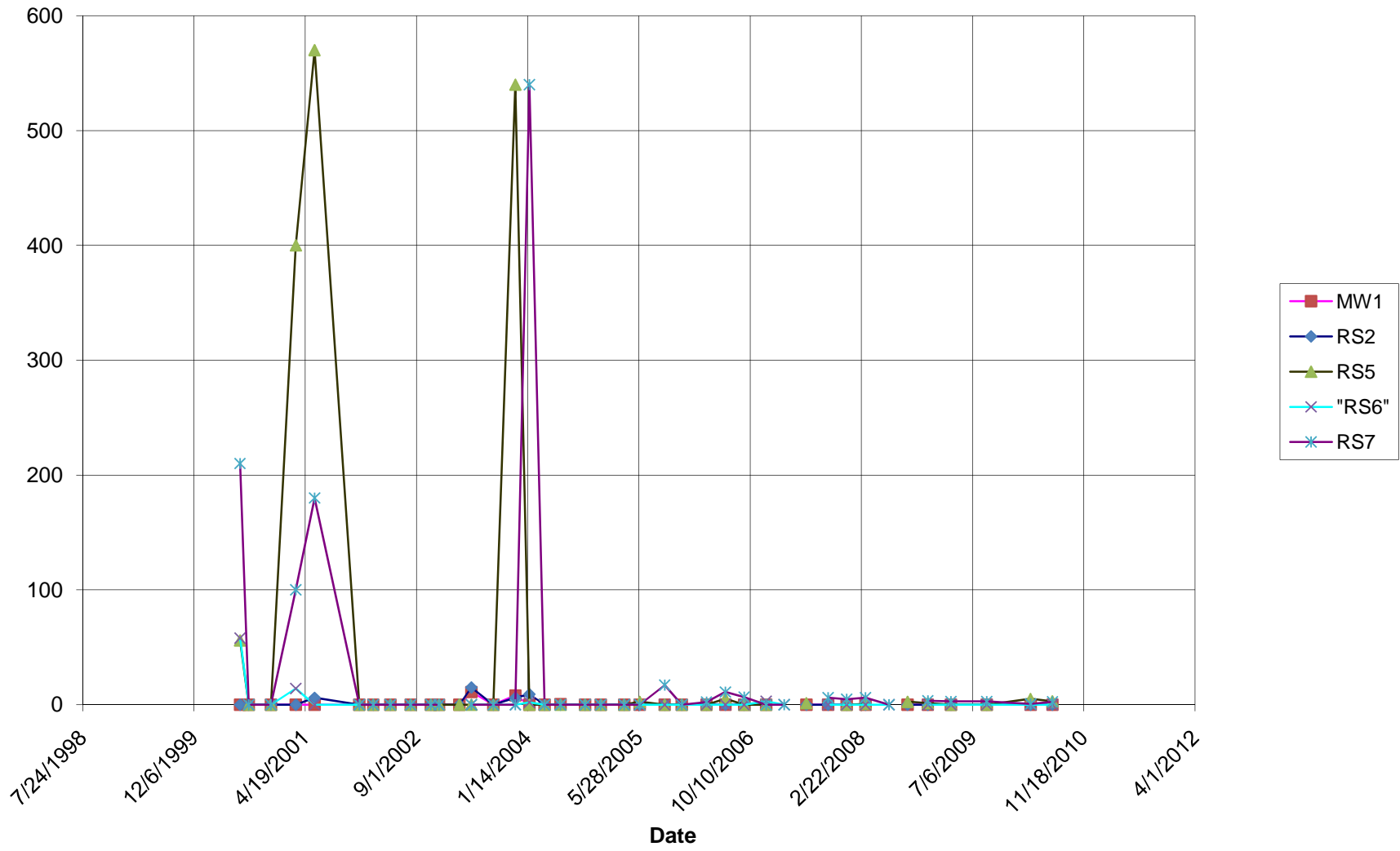
APPENDIX B.

GROUNDWATER ELEVATION CHART
TPHg, Benzene & MtBE IN WELLS CHARTS

Groundwater Elevation



MTBE IN WELLS



APPENDIX C.
LABORATORY REPORTS



Report Number : 73631

Date : 07/12/2010

Laboratory Results

George Converse
Western Geo-Engineers
1386 East Beamer St.
Woodland, CA 95776

Subject : 2 Water Samples
Project Name : DP 793
Project Number : June Sewer

Dear Mr. Converse,

Chemical analysis of the samples referenced above has been completed. Summaries of the data are contained on the following pages. Sample(s) were received under documented chain-of-custody. US EPA protocols for sample storage and preservation were followed. Testing procedures comply with the 2003 NELAC standard. All soil samples are reported on a total weight (wet weight) basis unless noted otherwise in the case narrative. Laboratory results relate only to the samples tested. This report may be freely reproduced in full, but may only be reproduced in part with the express permission of Kiff Analytical, LLC. Kiff Analytical, LLC is certified by the State of California under the National Environmental Laboratory Accreditation Program (NELAP), lab # 08263CA. If you have any questions regarding procedures or results, please call me at 530-297-4800.

Sincerely,

A handwritten signature in black ink, appearing to read "Jbel Kiff".

Jbel Kiff



Report Number : 73631

Date : 07/12/2010

Project Name : **DP 793**

Project Number : **June Sewer**

Sample : **Sewer**

Matrix : Water

Lab Number : 73631-01

Sample Date :06/30/2010

Parameter	Measured Value	Method Reporting Limit	Units	Analysis Method	Date/Time Analyzed
Benzene	< 0.50	0.50	ug/L	EPA 8260B	07/03/10 12:42
Toluene	< 0.50	0.50	ug/L	EPA 8260B	07/03/10 12:42
Ethylbenzene	< 0.50	0.50	ug/L	EPA 8260B	07/03/10 12:42
Total Xylenes	< 0.50	0.50	ug/L	EPA 8260B	07/03/10 12:42
1,2-Dichloroethane-d4 (Surr)	99.7		% Recovery	EPA 8260B	07/03/10 12:42
Toluene - d8 (Surr)	100		% Recovery	EPA 8260B	07/03/10 12:42

Sample : **RS 05**

Matrix : Water

Lab Number : 73631-02

Sample Date :06/30/2010

Parameter	Measured Value	Method Reporting Limit	Units	Analysis Method	Date/Time Analyzed
Benzene	6.3	0.50	ug/L	EPA 8260B	07/03/10 16:58
Toluene	1.1	0.50	ug/L	EPA 8260B	07/03/10 16:58
Ethylbenzene	< 0.50	0.50	ug/L	EPA 8260B	07/03/10 16:58
Total Xylenes	19	0.50	ug/L	EPA 8260B	07/03/10 16:58
Methyl-t-butyl ether (MTBE)	< 0.50	0.50	ug/L	EPA 8260B	07/03/10 16:58
TPH as Gasoline	280	50	ug/L	EPA 8260B	07/03/10 16:58
1,2-Dichloroethane-d4 (Surr)	100		% Recovery	EPA 8260B	07/03/10 16:58
Toluene - d8 (Surr)	99.8		% Recovery	EPA 8260B	07/03/10 16:58

QC Report : Method Blank Data

Project Name : **DP 793**

Project Number : **June Sewer**

Parameter	Measured Value	Method Reporting Limit	Units	Analysis Method	Date Analyzed
Benzene	< 0.50	0.50	ug/L	EPA 8260B	07/03/2010
Ethylbenzene	< 0.50	0.50	ug/L	EPA 8260B	07/03/2010
Toluene	< 0.50	0.50	ug/L	EPA 8260B	07/03/2010
Total Xylenes	< 0.50	0.50	ug/L	EPA 8260B	07/03/2010
1,2-Dichloroethane-d4 (Surr)	102		%	EPA 8260B	07/03/2010
Toluene - d8 (Surr)	99.8		%	EPA 8260B	07/03/2010
Benzene	< 0.50	0.50	ug/L	EPA 8260B	07/03/2010
Ethylbenzene	< 0.50	0.50	ug/L	EPA 8260B	07/03/2010
Toluene	< 0.50	0.50	ug/L	EPA 8260B	07/03/2010
Total Xylenes	< 0.50	0.50	ug/L	EPA 8260B	07/03/2010
Methyl-t-butyl ether (MTBE)	< 0.50	0.50	ug/L	EPA 8260B	07/03/2010
TPH as Gasoline	< 50	50	ug/L	EPA 8260B	07/03/2010
1,2-Dichloroethane-d4 (Surr)	97.5		%	EPA 8260B	07/03/2010
Toluene - d8 (Surr)	102		%	EPA 8260B	07/03/2010

Parameter	Measured Value	Method Reporting Limit	Units	Analysis Method	Date Analyzed
-----------	----------------	------------------------	-------	-----------------	---------------

QC Report : Matrix Spike/ Matrix Spike DuplicateProject Name : **DP 793**Project Number : **June Sewer**

Parameter	Spiked Sample	Sample Value	Spike Level	Spike Dup. Level	Spiked Sample Value	Duplicate Spiked Sample Value	Units	Analysis Method	Date Analyzed	Spiked Sample Percent Recov.	Duplicate Spiked Sample Percent Recov.	Relative Percent Diff.	Spiked Sample Percent Recov. Limit	Relative Percent Diff. Limit
Benzene	73631-01	<0.50	39.7	39.7	39.3	39.8	ug/L	EPA 8260B	7/3/10	99.1	100	1.15	80-120	25
Ethylbenzene	73631-01	<0.50	39.7	39.7	38.7	39.1	ug/L	EPA 8260B	7/3/10	97.5	98.6	1.16	80-120	25
P + M Xylene	73631-01	<0.50	39.7	39.7	38.2	38.4	ug/L	EPA 8260B	7/3/10	96.2	96.7	0.541	76.8-120	25
Toluene	73631-01	<0.50	39.7	39.7	39.7	40.0	ug/L	EPA 8260B	7/3/10	100	101	0.754	80-120	25
Benzene	73625-02	1.4	40.0	40.0	40.7	40.1	ug/L	EPA 8260B	7/3/10	98.3	96.8	1.55	80-120	25
Ethylbenzene	73625-02	15	40.0	40.0	57.8	56.4	ug/L	EPA 8260B	7/3/10	106	102	3.34	80-120	25
Methyl-t-butyl ether	73625-02	6.9	40.0	40.0	47.3	47.4	ug/L	EPA 8260B	7/3/10	101	101	0.0812	69.7-121	25
O-Xylene	73625-02	<0.50	40.0	40.0	42.9	42.2	ug/L	EPA 8260B	7/3/10	107	105	1.67	79.7-120	25
P + M Xylene	73625-02	24	40.0	40.0	66.3	65.4	ug/L	EPA 8260B	7/3/10	104	102	2.16	76.8-120	25

QC Report : Matrix Spike/ Matrix Spike Duplicate

Project Name : **DP 793**

Project Number : **June Sewer**

Parameter	Spiked Sample	Sample Value	Spike Level	Spike Dup. Level	Spiked Sample Value	Duplicate Spiked Sample Value	Units	Analysis Method	Date Analyzed	Spiked Sample Percent Recov.	Duplicate Spiked Sample Percent Recov.	Relative Percent Diff.	Spiked Sample Percent Recov. Limit	Relative Percent Diff. Limit
Toluene	73625-02	<0.50	40.0	40.0	42.0	42.1	ug/L	EPA 8260B	7/3/10	105	105	0.0794	80-120	25

QC Report : Laboratory Control Sample (LCS)Project Name : **DP 793**Project Number : **June Sewer**

Parameter	Spike Level	Units	Analysis Method	Date Analyzed	LCS Percent Recov.	LCS Percent Recov. Limit
Benzene	40.0	ug/L	EPA 8260B	7/3/10	103	80-120
Ethylbenzene	40.0	ug/L	EPA 8260B	7/3/10	104	80-120
P + M Xylene	40.0	ug/L	EPA 8260B	7/3/10	103	76.8-120
Toluene	40.0	ug/L	EPA 8260B	7/3/10	103	80-120
Benzene	39.9	ug/L	EPA 8260B	7/3/10	102	80-120
Ethylbenzene	39.9	ug/L	EPA 8260B	7/3/10	110	80-120
Methyl-t-butyl ether	39.9	ug/L	EPA 8260B	7/3/10	97.5	69.7-121
P + M Xylene	39.9	ug/L	EPA 8260B	7/3/10	114	76.8-120
TPH as Gasoline	513	ug/L	EPA 8260B	7/3/10	89.1	70.0-130
Toluene	39.9	ug/L	EPA 8260B	7/3/10	108	80-120

Project Contact (Hardcopy or PDF To): George Conner
 Company Address: 1386 E Beaman St
W E F E / Woodlawn, CA 95726
 Phone Number: 530 668 5700
 Fax Number: 530 662 0273
 Project #: Time Sewer P.O. #:
 Project Name: DP 793
 California EDF Report? Yes No
 Sampling Company Log Code:
 Global ID:
 EDF Deliverable To (Email Address):
 Bill to: paid ch # 9231 8/21/00
 Sampler Print Name: George Conner
 Sampler Signature: [Signature]

Chain-of-Custody Record and Analysis Request

Project Address:	Sampling		Container				Preservative			Matrix			MTBE @ 0.5 ppb (EPA 8260B)	BTEX (EPA 8260B)	TPH Gas (EPA 8260B)	5 Oxygenates (MTBE, DIPE, ETBE, TAME, TBA) (EPA 8260B)	7 Oxygenates (5 oxy + EtOH, MeOH) (EPA 8260B)	Lead Scav. (1,2 DCA & 1,2 EDB) (EPA 8260B)	Volatile Halocarbons (EPA 8260B)	Volatile Organics Full List (EPA 8260B)	Volatile Organics (EPA 524.2 Drinking Water)	TPH as Diesel (EPA 8015M)	TPH as Motor Oil (EPA 8015M)	CAM 17 Metals (EPA 200.7 / 6010)	5 Waste Oil Metals (Cd,Cr,Ni,Pb,Zn) (EPA 200.7 / 6010)	Mercury (EPA 245.1 / 7470 / 7471)	Total Lead (EPA 200.7 / 6010)	W.E.T. Lead (STLC)	CIRCLE METHOD	TAT				For Lab Use Only			
	Sample Designation	Date	Time	40 ml VOA	Sleeve	Poly	Glass	Tedlar	HCl	HNO ₃	None	Water																		Soil	Air	12 hr	24 hr		48 hr	72 hr	1 wk
<u>Out Hand</u>																																					
<u>Sewer</u>	<u>6/2/00</u>	<u>8:10</u>	<u>3</u>					<u>X</u>				<u>X</u>																								<u>ml 01</u>	
<u>RS 0.5</u>	<u>5</u>	<u>8:10</u>	<u>5</u>					<u>X</u>				<u>X</u>	<u>X</u>																							<u>5 02</u>	

Relinquished by: [Signature] Date: 7/2/00 Time: 1555
 Relinquished by: _____ Date: _____ Time: _____
 Relinquished by: _____ Date: 070210 Time: 1555 Received by Laboratory: Roz McFee Kiff Analytical

Remarks:
paid \$121.00 by check # 9231 on 070210.

