

RECEIVED

1:20 pm, Feb 15, 2008

Alameda County
Environmental Health

April 24, 2007

Mr. Jerry Wickham
Alameda County Health Care Services
Environmental Health Services
1131 Harbor Bay Parkway, Suite 250
Alameda, CA 94502-6577
(510) 567-6751
FACSIMILE (510) 337-9335

RE: The following report documents the "First Quarter 2007 Groundwater Sampling Report/Update Status, Former Desert Petroleum Site DP793" dated April 24, 2007, concerning groundwater monitor well samplings that occurred in March 2007 at DP 793, 4035 Park Blvd., Oakland, California 94602.

Dear Mr. Wickham:

I have reviewed the enclosed report that I contracted Western Geotechnical Engineers to prepare.

I declare, under penalty of perjury, that the information and/or recommendations contained in the attached report are true and correct to the best of my knowledge.

Sincerely,


William Thompson, Desert Petroleum, Inc

4/25/07
date

FIRST QUARTER 2007
GROUNDWATER SAMPLING REPORT

FORMER DESERT SITE DP 793
4035 PARK BLVD.
OAKLAND, CA.

FOR
DESERT PETROLEUM

April 24, 2007

BY

-WEGE-
WESTERN GEO-ENGINEERS
1386 E. BEAMER STREET
WOODLAND, CALIFORNIA 95776
(530) 668-5300

TABLE OF CONTENTS

1.0 SITE LOCATION AND IDENTIFICATION NUMBERS	3
2.0 SITE INVESTIGATION/REMEDIATION CHRONOLOGY.....	3
3.0 LOCAL GEOLOGY.....	7
3.1 Geomorphology.....	7
3.2 Stratigraphy.....	7
Station Property.....	7
Backyard Sewer Lateral Route.....	7
Brighton Avenue.....	7
4.0 COLLECTION AND ANALYSIS OF GROUNDWATER SAMPLES.....	8
4.1 Depth to Water Measurements.....	8
5.0 RESULTS OF QUARTERLY GROUNDWATER MONITORING.....	8
5.1 Groundwater Gradient and Flow Direction.....	8
5.2 Results of Certified Analysis of Groundwater Samples.....	8
TPHg - Figure 5.....	9
Benzene - Figure 5.....	9
Toluene.....	9
Ethylbenzene.....	9
Xylenes.....	9
MtBE – Figure 6.....	10
6.0 PURGING OF RECEPTOR TRENCH.....	10
7.0 PUMPING ON-SITE WELL RS-5.....	10
8.0 FREE PHASE FLOATING PRODUCT REMOVAL.....	10
9.0 SUMMARY.....	11
10.0 RECOMMENDATIONS.....	12
11.0 TIME FRAME.....	12
12.0 LIMITATIONS.....	12

List of Tables

1. Groundwater Elevation and Certified Analytical Results
2. Groundwater Pumped and Treated

List of Figures

1. Area Base Map "Geotracker"
2. Portion of USGS Oakland East 7.5 Minute Quadrangle
3. Sample Location Figure
4. Groundwater Gradient, March 12, 2007
5. Groundwater Plume, TPHg & Benzene, March 12, 2007
6. Groundwater Plume, TPHg & MtBE, March 12, 2007

List of Appendices

- A. METHODS AND PROCEDURES, QA/QC WITH FIELD NOTES
- B. CHARTS
- C. LABORATORY REPORT(S)

Mr. Bill Thompson
Desert Petroleum
P.O. Box 1601
Oxnard, California 93032
(805) 644-6784 FAX (805) 654-0720

April 24, 2007

Dear Mr. Thompson:

The following report documents the first quarter 2007 sampling at DP793, 4035 Park Blvd., Oakland, California.

1.0 SITE LOCATION AND IDENTIFICATION NUMBERS

Former Desert Petroleum #793 is a non-active service station (USTs and associated piping removed June 23, 1994), located on the northwest corner of the intersection of Park Boulevard and Hampel Street at 4035 Park Blvd., Oakland, California (Figure 1). The site is located in projected section 32; T1S; R3W; MDB&M at an approximate elevation of 210 feet above mean sea level (Figure 2).

East Bay Municipal Utility District - Sewer Discharge Permit #50435501
Alameda County Local Oversight STID 1248
San Francisco Bay Regional Board (Region 2) Case # 01-0170
Facility/Leak Site ID# T0600100158

2.0 SITE INVESTIGATION/REMEDiation CHRONOLOGY

November 30, 1989	Alameda County Health Department (Mr. Ariu Levi) notified Desert Petroleum that gasoline was trickling into a sewer on Brighton Avenue through a crack in the bottom of the sewer access. Desert Petroleum's area manager sent to site to reconstruct and audit tank inventories and sales records. The audit indicated overages on all tanks.
December 1, 1989	Desert Petroleum contacted the station tenant, Mr. Jason Gopad, and advised him to test the fuel tanks and associated piping.
December 5, 1989	The retail fueling facility was closed.
December 6, 1989	Mr. Gopad had the underground storage tanks tested. The test results were inconclusive.
December 7, 1989	All fuel was removed from the underground storage tanks. The product lines were tested by Walton Engineering. The regular leaded and super unleaded lines passed. The regular unleaded line failed. A 1/2 inch hole in the 2 inch unleaded supply line was located beneath the eastern pump island. An ultrasound investigation was conducted to determine the location of the onsite sewer line. An onsite soil gas survey was conducted and indicated contamination associated with the pump islands and the sewer line on the western edge of the property.

December 8, 1989 Desert Petroleum submitted Unauthorized Release Report, drilling permits for site assessment obtained from Alameda County Flood Control and Water Conservation District, Zone 7, Underground Service Alert was notified.

December 11, 1989 Onsite drilling/sampling and well installation initiated, i.e., sample borings RS-1, RS-2, RS-3, RS-5 and RS-4. Groundwater monitoring wells installed into borings RS-1, RS-5, and RS-6. Vapor extraction well installed into boring RS-2.

December 12, 1989 Encroachment permit secured from the City of Oakland for assessment work in Brighton Avenue. Sample boring RS-4 drilled and sampled just east of the sewer access in Brighton Avenue to the 10 foot depth.

December 13, 1989 The area northeast of the sewer access was excavated with a backhoe. Gasoline appeared to be seeping from the backfill around the sewer line. A water supply line was inadvertently broke (USA markings incorrectly marked the location of this line). A vacuum truck was used to pump out the water/product from the excavation. Approximately 7,200 gallons of water/gasoline was manifested and sent to H & H Shipyard for treatment and disposal. The water line was repaired, perforated 4 inch PVC pipe was placed vertically into the excavation and the excavation backfilled with pea gravel from approximately the 8 foot depth to sub-grade, well RS-7. A portable vapor extraction unit connected to the sewer and RS-7 (operated during daylight hours).

December 15, 1989 RSI S.A. V.E. vapor extraction system installed and connected to onsite wells RS-1, RS-2, RS-5 and RS-6. It operated continuously for one week, then during daylight hours thereafter due to noise complaints from neighbors. Length of vapor extraction and amounts of hydrocarbons removed not documented.

July 24, 1990 Soil boring/sampling investigations near the sewer lateral in residential backyard 1227 Hampel Avenue.

August 21, 1990 Soil boring/sampling investigations near the sewer lateral in residential backyards 4006 Brighton Avenue and 4010/4012 Brighton Avenue.

December 1990 Commenced quarterly groundwater monitoring.

September 8, 1993 Levine - Fricke, conducted soil boring/sampling investigation at residences 4003 Park Blvd. and 4006 Brighton Avenue. Constructed monitor well at 4003 Park Blvd for property owner of 4003 Park Blvd (not a part of 4035 Park Blvd. site assessment/investigation).

June 23, 1994 Removed all USTs and associated piping from 4035 Park Blvd.

August 14, 1995 Over-excavated UST and dispenser areas at 4035 Park Blvd, 1700 cubic yards of non-hazardous soil transported to and disposed at Forward Landfill, Stockton, California. Installed excavation well R3 (6 inch slotted PVC to 15 feet below surface) south of building, backfill excavation to 5 1/2 feet below surface with 1/4 inch pea gravel. Excavating removed monitor well RS-1.

August 16, 1995 Excavated and removed hydraulic hoists from station building.

August 31, 1995 Exploratory excavation at waste oil UST area, north of building and exploratory excavation west of building to 17 feet below surface. Installed excavation wells R1 in west excavation and R2 in north excavation.

September 5, 1995 Drill/sampled and installed replacement well for RS-1 (MW-1).

May 2, 1996 Soil Probe Survey and soil sample borings along sewer route from 4035 Park Blvd. through back yards, to Brighton Avenue. Temporary casing set in hand augered borings BH-1, BH-2, BH-3, BH-4 and BH-5. Conducted slug tests on BH-1, BH-2, BH-3 and BH-5. Not enough water entry into BH-4 to conduct test. The following hydraulic conductivities (k) were calculated; BH-1 = 0.15 ft/day, BH-2 = 2.9 ft/day, BH-3 = 0.11 ft/day, and BH-5 = 4.8 ft/day.

January 17, 1997 Soil Probe Survey Brighton Avenue
August 12, 1999 Installed receptor trench, Brighton Avenue. 148 cubic yards non hazardous gasoline contaminated soil transported and disposed of at Vacaville Landfill, Vacaville, California. Installed wells RS-8, RS-9 and RS-10.

October 7, 1999 Pumped 19,451 gallons of gasoline contaminated groundwater from receptor trench, stored in above ground 22,000 gallon Baker tank.

January 24, 2000 Obtained sewer discharge permit from East Bay Municipal Utility District, started discharge of water stored in Baker tank to city sewer.

May 4, 2000 Started weekly purging of receptor trench well T1 (4 hours once per week). Discharged purged water through water carbon and then to sewer.

February 15, 2001 Set submersible pump in RS-5 to pump continuously, continued once a week purging of receptor well T1 (46,121 gallons removed from receptor trench well).

July 19, 2001 Ceased pumping of RS-5 and weekly purging of T1; 62,511 gallons removed from T1 and 78,919 gallons removed from RS-5 (total 141,430 gallons of gasoline contaminated groundwater treated and disposed to sewer).

March 21, 2002 Resumed pumping at RS-5.
August 6, 2002 246,849 gallons of gasoline contaminated groundwater pumped, treated and disposed to sewer.

November 20, 2002 Commenced weekly hand bailing of free phase product from well RS-8.
December 12, 2002 Purged receptor trench of 1432 gallons gasoline tainted groundwater.
January 9, 2003 Purged receptor trench of 1349 gallons gasoline tainted groundwater.
January 30, 2003 Purged receptor trench of 1624 gallons gasoline tainted groundwater.
March 13, 2003 Purged receptor trench of 1413 gallons gasoline tainted groundwater.
April 3, 2003 Purged receptor trench of 1305 gallons gasoline tainted groundwater.
April 9, 2003 Demolished existing service station building.
April 15, 2003 Replaced RS05 groundwater recovery pump with WEGE pump, while RS05 pump is serviced.

May 1, 2003 Reinstalled RS05 groundwater recovery pump.
Submitted Workplan to Investigate Contaminated Soils Above and Below the Water Table at the Former Area of the Station Building, 4035 Park Blvd., Oakland, CA.

May 6, 2003 Purged receptor trench of 1589 gallons gasoline tainted groundwater.
May 21, 2003 Purged receptor trench of 2544 gallons gasoline tainted groundwater.
June 25, 2003 Purged receptor trench of 1796 gallons gasoline tainted groundwater.
July 17, 2003 Purged receptor trench of 1560 gallons gasoline tainted groundwater.
July 31, 2003 Notice to initiate Workplan submitted May 1, 2003
August 6, 2003 Alameda County Health, Scott Seery, phoned Western Geo-Engineers, notifying them not to proceed with workplan.

August 13, 2003	Purged receptor trench of 1574 gallons gasoline tainted groundwater.
September 4, 2003	Purged receptor trench of 1477 gallons gasoline tainted groundwater.
October 3, 2003	Purged receptor trench of 1285 gallons gasoline tainted groundwater.
October 16, 2003	Removed water carbon unit #1, placed new water carbon in #2 position and moved #2 water carbon into #1 position.
November 20, 2003	Purged receptor trench of 1303 gallons gasoline tainted groundwater.
December 18, 2003	Purged receptor trench of 1303 gallons gasoline tainted groundwater.
January 22, 2004	Purged receptor trench of 1175 gallons gasoline tainted groundwater.
February 26, 2004	Purged receptor trench of 102 gallons gasoline tainted groundwater.
March 30, 2004	Purged receptor trench of 975 gallons gasoline tainted groundwater.
April 29, 2004	Purged receptor trench of 1406 gallons gasoline tainted groundwater.
May 13, 2004	Turned pumping system off, removed lid from #1 carbon and removed scaling from top of carbon, replaced lid and restarted pump.
May 27, 2004	Purged receptor trench of 1647 gallons gasoline tainted groundwater.
June 30, 2004	Purged receptor trench of 1759 gallons gasoline tainted groundwater.
July 29, 2004	No electrical power to treatment compound; has been disconnected.
September 24, 2004	New power panel at site, need 100 feet extension cord to connect pump controller to power for RS-5.
September 28, 2004	Restarted pumping at RS-5. Performed 1/4ly well samplings. Purged receptor trench of 1911 gallons.
September 30, 2004	Containment berm full of water, inspected carbon #1, leaking from bottom. Turned system off and removed carbon from system.
October 15, 2004	Took delivery of new water carbon, placed #2 carbon into #1 position, new carbon into #2 position, restarted pumping system.
December 8, 2004	Performed 1/4ly well samplings.
December 9-16, 2004	Direct push/cored 12 borings to obtain groundwater and soil samples.
March 8, 2005	Published Conceptual Model
March 23, 2005	Performed 1/4ly well samplings.
June 1, 2005	Performed 1/4ly well samplings.
September 21, 2005	Performed 1/4ly well samplings.
December 7, 2005	Performed 1/4ly well samplings.
February 13, 2006	Published Work Plan to: Over-excavate benzene contaminated soils; to connect the receptor trench to treatment compound; further define TPHg groundwater plume.
March 28, 2006	Performed 1/4ly well samplings.
June 21, 2006	Performed 1/4ly well samplings.
September 13, 2006	Performed 1/4ly well samplings.
October 19, 2006	Installed new water meter at carbon effluent, Meter # 82773286.
November 27, 2006	Destroyed monitor wells MW1, RS2 and RS6. Conducted hand auger soil and groundwater sampling downgradient of RS9.
December 21, 2006	Performed 1/4ly well samplings.
March 12, 2007	Performed 1/4ly well samplings.

3.0 LOCAL GEOLOGY

3.1 Geomorphology

The site is located on the western slope of the Berkeley Hills. The Berkeley Hills are a northwest-southeast trending range within the Coastal Range Province of California. Erosion of the Coastal Ranges has filled the valleys within and bordering the Coastal Range with sequences of gravels, silts, sands, and clays.

3.2 Stratigraphy

Station Property

The native soil from surface to 13 feet below ground surface (BGS) consists of dark brown silty clay. The dark brown clay is underlain by light brown stiff clay that includes subrounded to rounded metavolcanic gravel. This clay extends to approximately 23 feet BGS at the northwest corner of the site. A fine to medium sand, clayey sand, and silty sand underlies the gravel and clay.

Backyard Sewer Lateral Route

Assessments performed along the sewer lateral as it leaves the site and routes through the residential area towards Brighton Avenue show the subsurface to consist of fill from a couple of inches thick to two feet thick. Beneath the fill is a sequence of clay formations that vary from light brown to dark gray to approximately the 6 foot depth. Silty clay then extends to approximately the 14-foot depth. Beneath the silty clay is sand with occasional gravel. This sand is 11 feet thick at RS5 and is underlain by silty clay.

Brighton Avenue

Construction of the receptor trench along the eastern curb area of Brighton Avenue revealed two separate sequences of lithology. North of the storm drain catch basin the sequence consists of; clay to the four foot depth, silty clay to the seven foot depth, fine silty sand to the 9 foot depth, medium sand to the 10 foot depth, silty clay to the 11 ½ foot depth, gravel to the 12 foot depth underlain by clay to the 16 foot depth. South of the storm catch basin is a sequence of silty clays and clays to depth.

Sandier sequence of sediments north of the storm water catch basin at Brighton Avenue compared to the sediments south of the storm water catch basin, indicate a facies change or a fault remnant striking east/west near the storm drain catch basin. A topographic lineation along the 200 foot contour is located in this area, see Figure 2.

4.0 COLLECTION AND ANALYSIS OF GROUNDWATER SAMPLES

Groundwater samples were collected on March 12, 2007. Samples were analyzed for Total Petroleum Hydrocarbons as gasoline, Benzene, Toluene, Ethylbenzene, Xylenes, the fuel oxygenant Methyl tert-Butyl Alcohol (MtBE) using EPA method 8260B, see Table 1. Figure 3 shows the positions of the groundwater monitoring wells, the receptor trench and previous sample locations.

4.1 Depth to Water Measurements

On March 12, 2007 depth to water was measured at each well using a product/water interface probe. Measurements are referenced to the surveyed elevation at the top of casing at each well. Table 1 shows the elevation of groundwater with respect to mean sea level for all wells through March 12, 2007.

5.0 RESULTS OF QUARTERLY GROUNDWATER MONITORING

5.1 Groundwater Gradient and Flow Direction

Figure 4 shows the groundwater elevation gradients and flow direction that were derived from the depth to water measurements of the monitor wells on March 12, 2007, prior to purging the wells for sampling, see Table 1 and Appendix A. On February 15, 2001 a submersible pump was placed into onsite well RS-5 to try to capture contaminated groundwater beneath the site and adjoining properties. The pump rate was set at approximately 2 gpm. The pump was removed from RS-5 on July 19, 2001. After evaluation of the effects the pumping had on remediating the site the pump was placed back into RS-5 on March 21, 2002. Pumping from RS5 lowered the water levels in RS-6, RS-8, RS-10, R1 and R2, see Appendix B. Table 1 shows the groundwater elevations for the wells during the assessment of this site.

The current flow direction is to the northwest and west with a cone of influence created by the pumping of RS5 and influencing out to downgradient well RS8. The hydraulic gradient averages 0.09 feet/linear foot down gradient from well RS10 to the intercept trench well T1. The present flow direction and hydraulic gradient are consistent with previous determinations by WEGE. Another striking feature of the groundwater gradient is the steep slope that extends south of RS5 and RS 8 out to well LF1. This Northwest lineation is seen in previous groundwater gradient determinations and could be continuous to the change in lithology noted during the excavation of the intercept trench. The excavation south of T1 contained clay and the area north of T1 contained sands.

5.2 Results of Certified Analysis of Groundwater Samples

The results of the certified analyses of groundwater samples collected on March 12, 2007 are shown in Table 1.

TPH-G concentrations in water samples from the eight monitor wells, the receptor trench well and two recovery wells ranged from 19000 ug/L at T1, to below laboratory lower detection limits of 50 ug/L in wells RS10, R1, R2, R3 and LF1.

Benzene concentrations were found in seven wells; the pumping well RS5 contained 160 ug/L, trench well T1 contained 4700 ug/L, RS7 contained 220 ug/L, R2 contained 62 ug/L and RS9 contained 25 ug/L. Wells RS10, R1, R3 and LF1 were below laboratory lower detection limits (0.5 ug/L), see Appendix C - Laboratory Report. Access to well RS8 was denied by the presence of the property owners dog.

Analytical results for Fuel Oxygenant MtBE were below laboratory lower detection limits in wells RS10, R1, R2, R3 and LF1. Well RS5 contained 1.5 ug/L MtBE, well RS7 contained 2.6 ug/L MtBE, well RS9 contained 7.5 ug/L MtBE and well T1 contained 16 ug/L MtBE, see Table 1.

Figure 5 (December 21, 2006) shows the lateral distribution of the hydrocarbon plume with benzene distinction in groundwater. Also depicted on Figure 5 is the groundwater sample results from the November 27, 2006 backyard hand auger sampling downgradient of RS9. Four hand auger grab water samples were obtained and all were below laboratory lower detection limits for TPHg and Benzene. A sump sample was obtained from 3976 Greenwood Avenue and showed 180 ug/L TPHg and 58 ug/L Toluene.

TPHg - Figure 5

Total Petroleum Hydrocarbons-gasoline range has a laboratory lower detection limit (LLDL) of 50 ug/L and was detected in wells R2, RS5, RS7, RS9 and T1 ranging from a low of 210 ug/L at R2 to a high of 19,000 ug/L at trench well T1.

Benzene - Figure 5

Benzene has a LLDL of 0.5 ug/L. The recommended CPHG (California Public Health Goal) for Benzene is 1.5 ug/L. Benzene was detected in wells R2, RS5, RS7, RS9 and T1 ranging from a low of 25 ug/L at RS9 to a high of 4700 ug/L at trench well T1.

Toluene

Toluene has a LLDL of 0.5 ug/L. The recommended CPHG for toluene is 150 ug/L. Toluene was detected in wells RS5, RS7, RS9, and T1, along with the sump sample from 3976 Greenwood Avenue, ranging from a low of 3.7 ug/L at well RS7 to a high of 750 ug/L at trench well T1.

Ethylbenzene

Ethylbenzene has a LLDL of 0.5 ug/L. The recommended CPHG for Ethylbenzene is 300 ug/L. Ethylbenzene was detected in wells RS5, RS7, RS9, R2 and T1, ranging from a low of 1.8 ug/L at well R2 to a high of 870 ug/L at trench well T1.

Xylenes

Xylenes have a LLDL of 0.5 ug/L. The recommended CPHG for Xylenes is 1800 ug/L. Xylenes were detected in wells RS5, RS7, RS9 and T1, ranging from a low of 35 ug/L at well RS7 to a high of 2300 ug/L at trench well T1, see Table 1 and Appendix C - Laboratory Report.

MtBE – Figure 6

MtBE has a LLDL of 0.5 ug/L. The recommended CPHG for MtBE is 13 ug/L. MtBE was detected in wells RS5, RS7, RS9 and T1, along with the hand auger boring at 3990/3992 Greenwood Avenue, ranging from a low of 1.5 ug/L at well RS5 to a high of 16 ug/L at trench well T1, see Table 1 and Appendix C - Laboratory Report.

6.0 PURGING OF RECEPTOR TRENCH

The last purging of the receptor (intercept) trench occurred on June 30, 2004. 93,311 gallons of groundwater have been pumped from the receptor trench and purged from the groundwater monitoring wells, see Table 2.

7.0 PUMPING ON-SITE WELL RS-5

On February 15, 2001 a submersible pump with a pump bypass was placed into RS-5. The pump rate was adjusted to 1.5 gpm and allowed to continuously pump from RS-5 for one week. 3223 gallons were pumped from RS-5 through the two, in series, water carbon units and discharged to the sewer. On February 22, 2001 the pump was inspected and showed a slimy growth covering the pump and discharge line that was below the water level. The pump was cleaned and placed back into RS-5 and continued to discharge from RS-5 through the water carbon units to sewer until July 19, 2001. On July 19, 2001 Desert Petroleum requested suspension of further pumping at the site. The pump was removed and the site secured. From February 15 through July 19, 2001, 78,919 gallons of gasoline contaminated groundwater was recovered from RS-5 and treated through carbon before being discharged to the sewer. Pumping from RS5 was resumed on March 21, 2002. As of March 12, 2007, 1,089,849 gallons of groundwater have been pumped from RS5 and treated through two, in series, water carbon units prior to being discharge to the sanitary sewer, see Table 2.

The pumping from RS-5 has lowered the groundwater at this well by at least 12feet, when compared to non pumping water measurements, see Chart - Appendix B. This creates a cone of influence out to offsite wells RS-8 and RS-10, see Figure 4

8.0 FREE PHASE FLOATING PRODUCT REMOVAL

Yellow Free Phase Floating Product was discovered in well RS8, 0.04 feet in thickness on August 6, 2002. Since all product storage and dispensing systems have been removed from the site (June 1994), it is thought that the product found in RS8, is residual from the November 1989 release and groundwater pumping at RS-5 is retrieving this residual product. Weekly bailing of the floating product from November 20, 2002 through December 12, 2002, (the last noted detection of free phase product in RS8) removed 0.014 gallons of degraded gasoline. This recovered degraded gasoline was stored on site in a 55 gallon 17H drum. Inspection of the 55 gallon drum on June 21, 2006 showed that the recovered gasoline had evaporated; the drum is now empty.

9.0 SUMMARY

Pumping from RS-5 has created a cone of influence off-site downgradient out to RS-8 and RS-10. Pumping has increased the dissolved oxygen in RS-5 and hydrocarbon concentrations have declined in R1, R2, R3, RS7, RS8, RS9, RS-10 and the Receptor Trench (T1).

The lowest hydrocarbon concentrations were observed May 31, 2001 while the weekly pumping of the trench well and the continuous pumping of RS5 were occurring. The most recent sampling, March 12, 2007 shows continued decrease in hydrocarbons to levels lower than the May 31, 2001 sample results at wells RS7, RS10, R1 and R2 see Charts in Appendix B.

Previous sampling on September 2, 1999, showed that aerobic bacteria (hydrocarbon degraders) exist in the groundwater associated with the hydrocarbon plume.

Soil core samples obtained from drilling activities December 2004 at 4035 Park Blvd showed high concentrations of TPHg and BTEX exist in the soils and shallow groundwater (8 ft to 32 ft below ground surface) beneath the area that was previously occupied by the station building. Water sampling of the December 2004 borings showed slow drainage, indicating low hydraulic conductivity in the silty clay and the clayey conglomerate formations. Previous slug test on temporary piezometers installed downgradient of the site, in the backyard of the surrounding residences, showed groundwater velocities ranging between 4 and 385 feet per year. Pumping of RS5 produces approximately 500 gallons per day (<0.5 gpm). To further slow the migration of the contaminants of concern, organic carbon analysis showed total organic carbon in the water bearing formations to range between 340 and 5700 mg/Kg. Along with the organic carbon, natural attenuation is occurring as evident from analysis for the electron acceptors (dissolved oxygen, nitrate, sulfate and ferric iron) along with the presence of biological indicators (carbon dioxide, methane, aerobic hydrocarbon degrading bacteria, and reduced nutrients ortho phosphate and ammonia as nitrogen).

Alameda County Health, in a letter dated November 16, 2005 concurred with the recommendations to remove the remaining on-site hydrocarbon source, continue existing groundwater extraction from well RS5 and to conduct continuous groundwater extraction from the intercept trench. These procedures were recommended by Western Geo-Engineers in their March 8, 2005 report "Soil and Groundwater Investigation with Conceptual Model".

A Work Plan detailing the above activities had been approved. The destruction of on-site monitoring wells MW1, RS2 and RS6 was completed in November 2006 along with the soil and groundwater sampling downgradient of monitor wells RS9. Bids received for connecting the intercept trench and construction of a permanent groundwater treatment facility along with the over-excavation of contaminated soils were too high. A new bid request package was developed and submitted to qualified contractors. Results from the new bids should be received in April 2007.

10.0 RECOMMENDATIONS

With a new property owner intending to build residential buildings on 4035 Park Blvd., the following recommendations are made by Western Geo-Engineers:

- Proceed with obtaining reasonable bids to over-excavate the contaminated soils and to connect the intercept trench to a groundwater treatment compound.

11.0 TIME FRAME

April 2007	Receive bids (cost estimates) to complete the construction of a new treatment compound, connect the intercept trench for continuous pumping and excavated and remove TPHg/Benzene contaminated soils from 4035 Park Blvd., Oakland, CA.
May 2007	Award the above described work to a qualified contractor.
June 2007	2 nd Quarter Well Monitoring.

12.0 LIMITATIONS

This report is based upon the following:

- A. The observations of field personnel.
- B. The results of laboratory analyses performed by a state certified laboratory.
- C. Referenced documents.
- D. Our understanding of the regulations of the State of California, Alameda County and the City of Oakland.
- E. Changes in groundwater conditions can occur due to variations in rainfall, temperature, local and regional water use, and local construction practices.
- F. In addition, variations in the soil and groundwater conditions could exist beyond the points explored in this investigation.

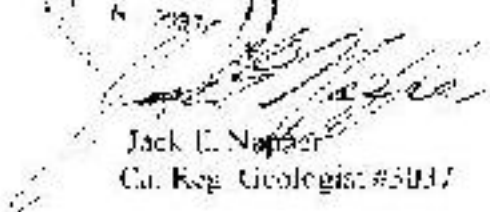
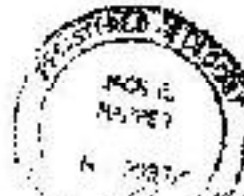
State Certified Laboratory analytical results are included in this report. This laboratory follows EPA and State of California approved procedures; however, WEGE is not responsible for errors in these laboratory results. Western Geo-Engineers is a corporation under California Registered Geologist #3037 and/or Contractors License #513857. The services performed by Western Geo-Engineers have been conducted in a manner consistent with the level of care and skill ordinarily exercised by members of our profession currently practicing under similar conditions in the State of California and the Oakland area. Our work and/or supervision of remediation and/or abatement operations, active or preliminary, at this site is in no way meant to imply that we are owners or operators of this site. Known or suspected contamination of soil and/or groundwater must be

reported to the appropriate agencies in a timely manner. No other warranty, expressed or implied, is made.

Sincerely,



George Converse
Geologist



Jack E. Napier
Cal. Reg. Geologist #5017

cc: Mr. Jerry Wickham, Alameda County Health (510) 567-6791
Mr. Leroy Griffin, Oakland Fire Dept.
Mr. Kin Man Li, property owner (510) 599-7000

TABLE 1
GROUNDWATER ELEVATIONS AND CERTIFIED ANALYTICAL LABORATORY RESULTS FROM WATER SAMPLES
DESERT PETROLEUM, INC. SITE #793
4035 PARK BOULEVARD, OAKLAND, CALIFORNIA

ID#	(All concentrations in parts per billion [ug/L, ppb]) (AMSL = Above mean sea level)										
	DATE SAMPLED	WELL CASING ELEVATION (FEET AMSL)	DEPTH TO GROUND WATER (FEET)	GROUND WATER ELEVATION (FEET AMSL)	TPH-G (UG/L)	BENZENE (UG/L) (1.5)	TOLUENE (UG/L) (150)	ETHYL-BENZENE (UG/L) (300)	XYLENES (UG/L) (1800)	MTBE (UG/L) (13)	
(CALIFORNIA PUBLIC HEALTH GOAL)											
RS-01	12/14/1989	228.15	24.25	203.9	19000	2600	2700	200	1200		
RS-01	12/90				15000	3500	330	170	760		
RS-01	2/91				6900	910	200	39	540		
RS-01	6/91				1600	56	180	12	26		
RS-01	9/91				4100	730	7.6	5.1	24		
RS-01	12/91				8300	950	160	71	190		
RS-01	11/9/1992	228.15	17.05	211.1	1700	730	9.6	16	14		
RS-01	4/7/1994	228.15	13	215.15	860	84	12	16	110		
RS-01	6/19/1994	228.15	13.37	214.78	1400	150	12	52	87		
RS-01	9/17/1994	228.15	16.33	211.82	310	30	1.8	2.8	3.9		
RS-01	3/12/1995	228.15	4.66	223.49	ND	ND	ND	ND	ND		
RS-01	8/14/1995	DESTROYED BY OVER-EXCAVATION OF UST-DISPENSER AREAS (8/14/95)									
RS-01	9/5/1995	REPLACED WITH MW-1 9/5/95.									
MW-01	10/4/1995	229.5	12.38	217.12	ND	ND	ND	ND	ND		
MW-01	12/21/95	229.5	13.40	216.1	< 50	< 0.5	< 0.5	< 0.5	< 0.5	< 0.5	
MW-01	03/27/96	229.5	5.53	223.97	< 50	< 0.5	< 0.5	< 0.5	< 2	< 50	
MW-01	06/11/96	229.5	9.02	220.48	< 50	< 0.5	< 0.5	< 0.5	< 2	< 50	
MW-01	09/04/96	229.5	11.84	217.66	< 50	< 0.5	< 0.5	< 0.5	< 2	< 5	
MW-01	12/11/96	229.5	12.98	216.52	< 50	< 0.5	0.9	< 0.5	< 1	< 0.5	
MW-01	2/21/97	229.5	9.50	220	< 50	< 0.5	0.9	< 0.5	< 1	< 0.5	
MW-01	5/28/97	229.5	11.18	218.32	< 50	3	3	< 0.5	< 1	< 0.5	
MW-01	9/2/1997	229.5	13.00	216.5	< 50	5	< 0.5	< 0.5	< 1	< 0.5	
MW-01	11/24/1997	229.5	14.12	215.38	< 50	5	< 0.5	< 0.5	< 1	< 0.5	
MW-01	2/25/1998	229.5	6.41	223.09	< 50	< 0.5	< 0.5	< 0.5	< 1	< 0.5	
MW-01	7/8/1998	229.5	7.28	222.22	< 50	< 0.5	< 0.5	< 0.5	< 1	< 1	
MW-01	9/16/1998	229.5	10.96	218.54	< 50	< 0.5	< 0.5	< 0.5	< 1	< 1	
MW-01	11/24/1998	229.5	12.24	217.26	52	2.3	5.2	< 0.5	5.4	11	
MW-01	2/23/1999	229.5	7.14	222.36	< 50	< 0.5	5	< 0.5	< 1	< 0.5	
MW-01	5/5/1999	229.5	7.00	222.5	< 50	2	<0.5	< 0.5	< 1	8	
MW-01	8/26/1999	229.5	11.41	218.09	<50	4.1	<0.5	< 0.5	< 1	<1	
MW-01	11/10/1999	229.5	13.27	216.23	<50	<0.5	<0.5	< 0.5	< 1	<0.5	
MW-01	2/9/2000	229.5	13.76	215.74	<50	<0.5	<0.5	0.5	< 1	0.5	
MW-01	6/30/2000	229.5	10.63	218.87	<50	<0.5	<0.5	< 0.5	< 1	< 0.5	
MW-01	8/8/2000	229.5	11.77	217.73	62	1	2	< 0.5	2	< 0.5	
MW-01	11/16/2000	229.5	13.33	216.17	<50	<0.5	<0.5	< 0.5	< 1	< 0.5	
MW-01	3/8/2001	229.5	12.30	217.2	<50	<0.5	<0.5	< 0.5	< 0.5	< 0.5	
MW-01	5/31/2001	229.5	11.88	217.62	<50	<0.5	<0.5	< 0.5	< 0.5	< 0.5	
MW-01	12/18/2001	229.5	13.74	215.76	<50	<0.5	<0.5	< 0.5	< 0.5	< 0.5	
MW-01	2/19/2002	229.5	14.42	215.08	<50	<0.5	<0.5	< 0.5	< 0.5	< 0.5	
MW-01	5/7/2002	229.5	10.78	218.72	<50	<0.5	<0.5	< 0.5	< 0.5	< 0.5	
MW-01	8/6/2002	229.5	12.70	216.8	<50	<0.5	<0.5	< 0.5	< 0.5	< 0.5	
MW-01	11/5/2002	229.5	15.00	214.5	<50	<0.5	<0.5	< 0.5	< 0.5	< 0.5	
MW-01	12/12/2002	229.5	15.46	214.04							
MW-01	3/13/2003	229.5	14.51	214.99	<50	<0.5	<0.5	< 0.5	< 0.5	< 0.5	
MW-01	5/6/2003	229.5	11.06	218.44	<50	<0.5	<0.5	< 0.5	< 0.5	< 0.5	
MW-01	8/13/2003	229.5	13.13	216.37	<50	<0.5	<0.5	< 0.5	< 0.5	< 0.5	
MW-01	11/20/2003	229.5	14.85	214.65	<50	<0.5	<0.5	< 0.5	< 0.5	< 0.5	
MW-01	1/22/2004	229.5	13.65	215.85							
MW-01	3/30/2004	229.5	11.68	217.82	<50	<0.5	<0.5	< 0.5	< 0.5	< 0.5	
MW-01	6/10/2004	229.5	13.08	216.42	<50	<0.5	<0.5	< 0.5	< 0.5	< 0.5	
MW-01	9/28/2004	229.5	14.33	215.17	<50	<0.5	<0.5	< 0.5	< 0.5	< 0.5	
MW-01	12/8/2004	229.5	14.67	214.83	<50	<0.5	<0.5	< 0.5	< 0.5	< 0.5	
MW-01	3/23/2005	229.5	9.60	219.9	<50	<0.5	<0.5	< 0.5	< 0.5	< 0.5	

TABLE 1
GROUNDWATER ELEVATIONS AND CERTIFIED ANALYTICAL LABORATORY RESULTS FROM WATER SAMPLES
DESERT PETROLEUM, INC. SITE #793
4035 PARK BOULEVARD, OAKLAND, CALIFORNIA

ID#	(All concentrations in parts per billion [ug/L, ppb]) (AMSL = Above mean sea level)											
	DATE SAMPLED	WELL CASING ELEVATION (FEET AMSL)	DEPTH TO GROUND WATER (FEET)	GROUND WATER ELEVATION (FEET AMSL)	TPH-G (UG/L)	BENZENE (UG/L) (1.5)	TOLUENE (UG/L) (150)	ETHYL-BENZENE (UG/L) (300)	XYLENES (UG/L) (1800)	MTBE (UG/L) (13)		
MW-01	6/1/2005	229.5	8.64	220.86	<50	<0.5	<0.5	< 0.5	< 0.5	< 0.5	****	
MW-01	9/21/2005	229.5	11.81	217.69	<50	1.3	<0.5	< 0.5	< 0.5	< 0.5	****	
MW-01	12/7/2005	229.5	13.02	216.48	<50	1.7	<0.5	0.63	0.76	< 0.5	****	
MW-01	3/28/2006	229.5	5.94	223.56	<50	<0.5	<0.5	< 0.5	< 0.5	< 0.5	****	
MW-01	6/21/2006	229.5	7.63	221.87	<50	<0.5	<0.5	< 0.5	< 0.5	< 0.5	****	
MW-01	9/13/2006	229.5	11.40	218.1	<50	<0.5	<0.5	< 0.5	< 0.5	< 0.5	****	
MW-01	11/27/2006	well destroyed, Alameda County Public Works Permit #W2006-0971										
RS-02	12/14/1989	227.39										
RS-02	6/19/1994	227.39	10.89	216.50								
RS-02	3/12/1995	227.39	5.26	222.13	ND	ND	ND	ND	ND			
RS-02	10/4/1995	227.39	15.05	212.34	ND	ND	ND	ND	ND			
RS-02	12/21/95	227.39	9.95	217.44	< 50	< 0.5	< 0.5	< 0.5	< 0.5	< 0.5		
RS-02	03/27/96	227.39	6.28	221.11	< 50	< 0.5	< 0.5	< 0.5	< 2	< 50		
RS-02	06/11/96	227.39	8.00	219.39	< 50	1.2	2.8	< 0.5	< 2	< 50		
RS-02	09/04/96	227.39	9.89	217.50	< 50	< 0.5	< 0.5	< 0.5	< 2	< 5		
RS-02	12/11/96	227.39	8.38	219.01	< 50	< 0.5	< 0.5	< 0.5	< 1	6		
RS-02	2/21/97	227.39	6.96	220.43	< 50	< 0.5	< 0.5	< 0.5	< 1	< 0.5	*	
RS-02	5/28/97	227.39	10.02	217.37	< 50	3	3	< 0.5	< 1	< 0.5	*	
RS-02	9/2/1997	227.39	11.46	215.93	< 50	< 0.5	< 0.5	< 0.5	< 1	< 0.5	*	
RS-02	11/24/1997	227.39	10.43	216.96	< 50	< 0.5	1	< 0.5	3	< 0.5	*	
RS-02	2/25/1998	227.39	3.57	223.82	< 50	< 0.5	< 0.5	< 0.5	< 1	< 0.5	*	
RS-02	7/8/1998	227.39	8.83	218.56	< 50	< 0.5	< 0.5	< 0.5	< 1	< 1	*	
RS-02	9/16/1998	227.39	10.60	216.79	< 50	< 0.5	< 0.5	< 0.5	< 1	< 1	*	
RS-02	11/24/1998	227.39	13.27	214.12	140	2.8	19	2.6	3.3	15	*	
RS-02	2/23/1999	227.39	4.06	223.33	< 50	< 0.5	< 0.5	< 0.5	< 1	< 0.5		
RS-02	5/5/1999	227.39	7.70	219.69	< 50	0.7	< 0.5	< 0.5	< 1	6		
RS-02	8/26/1999	227.39	11.42	215.97	200	15	23	1.7	23	9	*	
RS-02	11/10/1999	227.39	15.94	211.45	< 50	<0.5	<0.5	<0.5	< 1	<0.5		
RS-02	2/9/2000	227.39	8.91	218.48	< 50	<0.5	<0.5	<0.5	< 1	<0.5		
RS-02	6/30/2000	227.39	9.79	217.60	52	2	<0.5	<0.5	< 1	<0.5		
RS-02	8/8/2000	227.39	10.71	216.68	60	<0.5	<0.5	<0.5	< 1	<0.5		
RS-02	11/16/2000	227.39	10.39	217.00	< 50	<0.5	<0.5	<0.5	< 1	<0.5		
RS-02	3/8/2001	227.39	6.62	220.77	< 50	<0.5	<0.5	<0.5	<0.5	<0.5	****	
RS-02	5/31/2001	227.39	10.09	217.30	< 50	<0.5	<0.5	<0.5	<0.5	<0.5	****	
RS-02	12/18/2001	227.39	6.99	220.40	< 50	<0.5	<0.5	<0.5	<0.5	<0.5	****	
RS-02	2/19/2002	227.39	8.08	219.31	< 50	<0.5	<0.5	<0.5	<0.5	<0.5	****	
RS-02	5/7/2002	227.39	9.27	218.12	< 50	<0.5	<0.5	<0.5	<0.5	<0.5	****	
RS-02	8/6/2002	227.39	11.38	216.01	< 50	<0.5	<0.5	<0.5	<0.5	<0.5	****	
RS-02	11/5/2002	227.39	17.09	210.30	< 50	<0.5	<0.5	<0.5	<0.5	<0.5	****	
RS-02	12/12/2002	227.39	13.19	214.20								
RS-02	3/13/2003	227.39	8.93	218.46	< 50	<0.5	<0.5	<0.5	<0.5	<0.5	****	
RS-02	5/6/2003	227.39	8.05	219.34	< 50	<0.5	<0.5	<0.5	<0.5	<0.5	****	
RS-02	8/13/2003	227.39	11.16	216.23	< 50	<0.5	<0.5	<0.5	<0.5	<0.5	****	
RS-02	11/20/2003	227.39	17.62	209.77	< 50	<0.5	<0.5	<0.5	<0.5	<0.5	****	
RS-02	1/22/2004	227.39	7.40	219.99								
RS-02	3/30/2004	227.39	7.95	219.44	< 50	<0.5	<0.5	<0.5	<0.5	<0.5	****	
RS-02	6/10/2004	227.39	10.56	216.83	< 50	<0.5	<0.5	<0.5	<0.5	<0.5	****	
RS-02	9/28/2004	227.39	17.02	210.37	< 50	<0.5	<0.5	<0.5	<0.5	<0.5	****	
RS-02	12/8/2004	227.39	9.80	217.59	< 50	<0.5	<0.5	<0.5	<0.5	<0.5	****	
RS-02	3/23/2005	227.39	5.05	222.34	< 50	<0.5	<0.5	<0.5	<0.5	<0.5	****	
RS-02	6/1/2005	227.39	8.60	218.79	< 50	<0.5	<0.5	<0.5	<0.5	<0.5	****	
RS-02	9/21/2005	227.39	11.45	215.94	< 50	1.4	<0.5	<0.5	<0.5	<0.5	****	

TABLE 1
GROUNDWATER ELEVATIONS AND CERTIFIED ANALYTICAL LABORATORY RESULTS FROM WATER SAMPLES
DESERT PETROLEUM, INC. SITE #793
4035 PARK BOULEVARD, OAKLAND, CALIFORNIA

ID#	(All concentrations in parts per billion [ug/L, ppb]) (AMSL = Above mean sea level)										
	DATE SAMPLED	WELL CASING ELEVATION (FEET AMSL)	DEPTH TO GROUND WATER (FEET)	GROUND WATER ELEVATION (FEET AMSL)	TPH-G (UG/L)	BENZENE (UG/L) (1.5)	TOLUENE (UG/L) (150)	ETHYL-BENZENE (UG/L) (300)	XYLENES (UG/L) (1800)	MTBE (UG/L) (13)	
RS-02	12/7/2005	227.39	10.82	216.57	< 50	<0.5	<0.5	<0.5	<0.5	<0.5	****
RS-02	3/28/2006	227.39	3.85	223.54	< 50	<0.5	<0.5	<0.5	<0.5	<0.5	****
RS-02	6/21/2006	227.39	8.86	218.53	< 50	<0.5	<0.5	<0.5	<0.5	<0.5	****
RS-02	9/13/2006	227.39	11.25	216.14	< 50	<0.5	<0.5	<0.5	<0.5	<0.5	****
RS-02	11/27/2006	well destroyed, Alameda County Public Works Permit #W2006-0972									
RS-05	12/14/1989	227.61	25.97	201.64	57000	3100	4300	670	3400		
RS-05	2/91	227.61	FLOATING PRODUCT								
RS-05	6/91	227.61	FLOATING PRODUCT								
RS-05	9/91	227.61	FLOATING PRODUCT								
RS-05	12/91	227.61	FLOATING PRODUCT								
RS-05	11/9/1992	227.61	20.73	206.88	50000	650	4800	1100	15000		
RS-05	4/7/1994	227.61	18.16	209.45	27000	5000	8700	550	2800		
RS-05	6/19/1994	227.61	18.11	209.5	20000	2100	5300	470	2500		
RS-05	9/17/1994	227.61	19.63	207.98	9300	230	340	110	700		
RS-05	3/12/1995	227.61	14.54	213.07	93000	6400	2000	19000	10000		
RS-05	10/4/1995	227.61	17.53	210.08	16000	420	2100	320	1800		
RS-05	12/21/95	227.61	17.47	210.14	48000	3500	9200	840	4800	56	
RS-05	03/27/96	227.61	13.51	214.1	68000	4900	18000	1700	11000	< 3000	
RS-05	06/11/96	227.61	14.25	213.36	66000	6300	20000	2100	12000	< 3000	
RS-05	09/04/96	227.61	16.50	211.11	31000	2100	11000	1100	6800	400	
RS-05	12/11/96	227.61	15.88	211.73	85000	7000	21000	1800	8900	570	
RS-05	2/21/97	227.61	13.76	213.85	sheen100000	5000	22000	1700	7300	<0.5	*
RS-05	5/28/97	227.61	15.77	211.84	52000	4500	19000	2100	10000	<0.5	*
RS-05	9/2/1997	227.61	17.47	210.14	38000	2200	9400	1300	5800	<0.5	*
RS-05	11/24/1997	227.61	18.67	208.94	45000	4000	16000	1900	9700	<0.5	*
RS-05	2/25/1998	227.61	10.53	217.08	160000	2700	31000	5300	28000	<0.5	*
RS-05	7/8/1998	227.61	13.75	213.86	45000	2800	12000	2000	8500	<10	*
RS-05	9/16/1998	227.61	15.80	211.81	49000	1400	7500	1700	8600	<5	*
RS-05	11/24/1998	227.61	16.64	210.97	89000	5300	15000	2800	13000	<10	*
RS-05	2/23/1999	227.61	12.36	215.25	19000	1900	11000	2500	4800	<25	*
RS-05	5/5/1999	227.61	12.78	214.83	78000	2000	10000	3000	15000	540	*
RS-05	8/26/1999	227.61	16.06	211.55	35000	870	4000	1900	8300	<1	*
RS-05	11/10/1999	227.61	17.54	210.07	40000	1000	5600	1800	8100	<0.5	*
RS-05	2/9/2000	227.61	16.31	211.3	46000	1400	6900	2700	11000	<0.5	*
RS-05	6/30/2000	227.61	15.15	212.46	37000	810	5200	2200	9100	<2.5	*
RS-05	8/8/2000	227.61	16.10	211.51	14000	330	500	1400	6500	<0.5	*
RS-05	11/16/2000	227.61	17.38	210.23	23000	430	2300	1100	4800	<0.5	*
RS-05	3/8/2001	227.61	27.72	199.89	11000	360	260	140	1500	2.6	****
RS-05	5/31/2001	227.61	22.96	204.65	7500	26	11	38	470	<5	****
RS-05	12/18/2001	227.61	15.61	212	12000	610	1200	100	1500	<5	****
RS-05	2/19/2002	227.61	14.80	212.81	22000	460	1700	680	4000	<5	****
RS-05	5/7/2002	227.61	31.77	195.84	700	150	10	19	67	5.2	****
RS-05	8/6/2002	227.61	31.77	195.84	< 50	<0.5	<0.5	<0.5	<0.5	<0.5	****
RS-05	11/5/2002	227.61	31.77	195.84	12000	150	360	21	890	<2	****
RS-05	12/12/2002	227.61	21.53	206.08							
RS-05	3/13/2003	227.61	36.70	190.91	240	5.5	1.9	2.3	9.6	1.4	****
RS-05	5/6/2003	227.61	14.52	213.09							
RS-05	8/13/2003	227.61	31.77	195.84	310	1.4	<0.5	1	2.9	<0.5	****
RS-05	11/20/2003	227.61	32.00	195.61	17000	150	720	240	1800	0.72	****
RS-05	1/22/2004	227.61	25.30	202.31							
RS-05	3/30/2004	227.61	21.90	205.71	4000	370	59	13	380	2.6	****
RS-05	6/10/2004	227.61	35.00	192.61	120	7	0.88	1.3	4.3	1.3	****
RS-05	9/28/2004	227.61	19.05	208.56	2600	110	89	75	56	<0.5	****

TABLE 1
GROUNDWATER ELEVATIONS AND CERTIFIED ANALYTICAL LABORATORY RESULTS FROM WATER SAMPLES
DESERT PETROLEUM, INC. SITE #793
4035 PARK BOULEVARD, OAKLAND, CALIFORNIA

ID#	(All concentrations in parts per billion [ug/L, ppb]) (AMSL = Above mean sea level)										
	DATE SAMPLED	WELL CASING ELEVATION (FEET AMSL)	DEPTH TO GROUND WATER (FEET)	GROUND WATER ELEVATION (FEET AMSL)	TPH-G (UG/L)	BENZENE (UG/L) (1.5)	TOLUENE (UG/L) (150)	ETHYL-BENZENE (UG/L) (300)	XYLENES (UG/L) (1800)	MTBE (UG/L) (13)	
(CALIFORNIA PUBLIC HEALTH GOAL)											
RS-05	12/8/2004	227.61	25.00	202.61	< 50	<0.5	<0.5	<0.5	<0.5	<0.5	****
RS-05	3/23/2005	227.61	26.05	201.56	7400	890	280	180	940	5.1	****
RS-05	6/1/2005	227.61	25.40	202.21	3500	380	85	59	360	3	****
RS-05	9/21/2005	227.61	19.00	208.61	790	34	4.7	0.86	99	<0.5	****
RS-05	12/7/2005	227.61	27.50	200.11	2200	65	30	24	200	1.3	****
RS-05	3/28/2006	227.61	19.60	208.01	5000	370	130	70	550	2.4	****
RS-05	6/21/2006	227.61	16.70	210.91	5000	370	130	70	550	2.4	****
RS-05	9/13/2006	227.61	31.00	196.61	240	11	3.2	1.2	11	0.85	****
RS-05	12/21/2006	227.61	28.00	199.61	4800	140	120	130	440	0.78	****
RS-05	3/12/2007	227.61	30.00	197.61	4300	160	130	110	600	1.5	****
RS-06	12/14/1989	227.22	22.52	204.7	11000	1400	1700	160	860		
RS-06	2/91	227.22	FLOATING PRODUCT								
RS-06	6/91	227.22			95000	4200	4200	650	3700		
RS-06	9/91	227.22	FLOATING PRODUCT								
RS-06	12/91	227.22			64000	3700	2300	730	4100		
RS-06	11/9/1992	227.22	19.43	207.79	19000	1600	710	500	1600		
RS-06	4/7/1994	227.22	14.42	212.8	16000	1200	1300	290	1100		
RS-06	6/19/1994	227.22	14.45	212.77	23000	1300	2200	590	2200		
RS-06	9/17/1994	227.22	19.52	207.7	24000	630	790	250	1100		
RS-06	3/12/1995	227.22	8.90	218.32	3200	450	13	82	230		
RS-06	10/4/1995	227.22	17.78	209.44	3700	170	250	38	290		
RS-06	12/21/95	227.22	14.98	212.24	3100	120	30	16	150	58	
RS-06	03/27/96	227.22	10.00	217.22	6900	180	440	79	360	< 300	
RS-06	06/11/96	227.22	12.00	215.22	7400	220	150	30	100	<1000	
RS-06	09/04/96	227.22	15.00	212.22	1400	68	2.6	7.7	9.2	14	
RS-06	12/11/96	227.22	12.36	214.86	1800	39	16	10	18	< 0.5	
RS-06	2/21/97	227.22	10.00	217.22	2100	71	85	25	40	< 0.5	*
RS-06	5/28/97	227.22	13.56	213.66	1700	34	12	11	16	< 0.5	*
RS-06	9/2/1997	227.22	16.35	210.87	940	34	71	9	55	< 0.5	*
RS-06	11/24/1997	227.22	15.72	211.5	490	9	6	1	7	< 0.5	*
RS-06	2/25/1998	227.22	6.26	220.96	1400	22	47	5	52	< 0.5	*
RS-06	7/8/1998	227.22	11.41	215.81	1500	83	9	84	2	<10	*
RS-06	7/30/1998	227.22			<50	<0.5	<0.5	<0.5	<1		
RS-06	9/16/1998	227.22	13.42	213.8	990	23	<0.5	<0.5	<1	<1	*
RS-06	11/24/1998	227.22	15.91	211.31	3400	5.3	<0.5	<0.5	14	<0.5	
RS-06	2/23/1999	227.22	7.00	220.22	1000	3.4	3.2	1.6	7.3	<0.5	
RS-06	5/5/1999	227.22	10.29	216.93	1100	50	10	80	15	2	
RS-06	8/26/1999	227.22	13.72	213.5	690	44	2.5	30	31	<5	
RS-06	11/10/1999	227.22	13.90	213.32	1800	2	2	0.9	16	< 0.5	
RS-06	2/9/2000	227.22	12.77	214.45	410	3	3	4	7	< 0.5	
RS-06	6/30/2000	227.22	12.69	214.53	660	7	2	5	6	< 0.5	
RS-06	8/8/2000	227.22	14.72	212.5	660	2	3	2	6	< 0.5	
RS-06	11/16/2000	227.22	15.28	211.94	560	1	2	1	5	< 0.5	
RS-06	3/8/2001	227.22	10.10	217.12	2200	<0.5	<0.5	<0.5	<0.5	<0.5	****
RS-06	5/31/2001	227.22	12.96	214.26	630	<0.5	<0.5	<0.5	<0.5	<0.5	****
RS-06	12/18/2001	227.22	10.88	216.34	56	0.53	<0.5	<0.5	0.56	<0.5	****
RS-06	2/19/2002	227.22	11.08	216.14	<50	<0.5	<0.5	0.6	<0.5	<0.5	****
RS-06	5/7/2002	227.22	12.31	214.91	240	<0.5	<0.5	<0.5	<0.5	<0.5	****
RS-06	8/6/2002	227.22	14.23	212.99	130	<0.5	<0.5	<0.5	<0.5	<0.5	3****
RS-06	11/5/2002	227.22	17.99	209.23	<50	<0.5	<0.5	<0.5	<0.5	<0.5	****
RS-06	12/12/2002	227.22	17.57	209.65							
RS-06	3/13/2003	227.22	11.82	215.4	120	<0.5	<0.5	<0.5	<0.5	<0.5	****

TABLE 1
GROUNDWATER ELEVATIONS AND CERTIFIED ANALYTICAL LABORATORY RESULTS FROM WATER SAMPLES
DESERT PETROLEUM, INC. SITE #793
4035 PARK BOULEVARD, OAKLAND, CALIFORNIA

ID#	(All concentrations in parts per billion (ug/L, ppb) (AMSL = Above mean sea level))										
	DATE SAMPLED	WELL CASING ELEVATION (FEET AMSL)	DEPTH TO GROUND WATER (FEET)	GROUND WATER ELEVATION (FEET AMSL)	TPH-G (UG/L)	BENZENE (UG/L) (1.5)	TOLUENE (UG/L) (150)	ETHYL-BENZENE (UG/L) (300)	XYLENES (UG/L) (1800)	MTBE (UG/L) (13)	
(CALIFORNIA PUBLIC HEALTH GOAL)											
RS-06	5/6/2003	227.22	10.10	217.12	<50	<0.5	<0.5	<0.5	<0.5	<0.5	****
RS-06	8/13/2003	227.22	13.88	213.34	<50	<0.5	<0.5	<0.5	<0.5	<0.5	****
RS-06	11/20/2003	227.22	18.62	208.6	<50	<0.5	<0.5	<0.5	<0.5	<0.5	****
RS-06	1/22/2004	227.22	11.24	215.98							
RS-06	3/30/2004	227.22	10.72	216.5	<50	<0.5	<0.5	<0.5	<0.5	<0.5	****
RS-06	6/10/2004	227.22	13.52	213.7	<50	<0.5	<0.5	<0.5	<0.5	<0.5	****
RS-06	9/28/2004	227.22	17.95	209.27	<50	<0.5	<0.5	<0.5	<0.5	<0.5	****
RS-06	12/8/2004	227.22	14.80	212.42	<50	<0.5	<0.5	<0.5	<0.5	<0.5	****
RS-06	3/23/2005	227.22	7.62	219.6	<50	<0.5	<0.5	<0.5	<0.5	<0.5	****
RS-06	6/1/2005	227.22	10.72	216.5	<50	<0.5	<0.5	<0.5	<0.5	<0.5	****
RS-06	9/21/2005	227.22	13.22	214	<50	1.5	<0.5	<0.5	<0.5	<0.5	****
RS-06	12/7/2005	227.22	14.02	213.2	74	0.63	<0.5	<0.5	<0.5	<0.5	****
RS-06	3/28/2006	227.22	6.03	221.19	<50	<0.5	<0.5	<0.5	<0.5	<0.5	****
RS-06	6/21/2006	227.22	10.40	216.82	<50	<0.5	<0.5	<0.5	<0.5	<0.5	****
RS-06	9/13/2006	227.22	12.82	214.4	<50	<0.5	<0.5	<0.5	<0.5	<0.5	****
RS-06	11/27/2006	well destroyed, Alameda County Public Works Permit #W2006-0973									
RS-07	12/14/1989	195.99									
RS-07	7/90	195.99			560000	24000	210000	50000	740000		
RS-07	2/91	195.99	FLOATING PRODUCT								
RS-07	6/91	195.99	FLOATING PRODUCT								
RS-07	9/91	195.99	FLOATING PRODUCT								
RS-07	12/91	195.99			270000	11000	22000	2000	13000		
RS-07	11/9/1992	195.99	4.62	191.37	81000	12000	16000	1900	13000		
RS-07	4/7/1994	195.99	4.03	191.96	74000	16000	16000	1400	8500		
RS-07	6/19/1994	195.99	4.07	191.92	83000	22000	19000	1500	9500		
RS-07	9/17/1994	195.99	4.05	191.94	270000	13000	15000	2100	1100		
RS-07	3/12/1995	195.99	3.72	192.27	35000	5100	560	6300	3600		
RS-07	10/4/1995	195.99	4.03	191.96	96000	14000	14000	1300	7000		
RS-07	12/21/95	195.99	3.95	192.04	70000	9300	12000	860	5600	210	
RS-07	03/27/96	195.99	3.80	192.19	64000	8900	14000	1100	8300	< 3000	
RS-07	06/11/96	195.99	3.79	192.2	65000	12000	17000	1600	9700	<5000	
RS-07	09/04/96	195.99	3.99	192	20000	4900	2100	670	4400	100	
RS-07	12/11/96	195.99	3.78	192.21	17000	4400	7500	570	4600	180	
RS-07	2/21/97	195.99	3.82	192.17	93000	31000	47000	3800	23000	<0.5	*
RS-07	5/28/97	195.99	3.82	192.17	52000	12000	8200	2000	11000	<0.5	*
RS-07	9/2/1997	195.99	3.96	192.03	28000	6100	2800	950	3800	<50	*
RS-07	11/24/1997	195.99	3.76	192.23	18000	4300	5900	600	2900	<0.5	*
RS-07	2/25/1998	195.99	3.70	192.29	13000	4300	7100	1100	5800	<0.5	*
RS-07	7/8/1998	195.99	3.76	192.23	45000	10000	3400	2000	8000	<10	*
RS-07	7/30/1998	195.99			72000	12000	2100	2000	9100		
RS-07	9/16/1998	195.99	3.83	192.16	5000	6500	160	<2.5	500	<5	*
RS-07	11/24/1998	195.99	3.77	192.22	19000	2100	1100	500	2100	<0.5	
RS-07	2/23/1999	195.99	3.70	192.29	83000	6500	9900	1200	7000	<10	
RS-07	5/5/1999	195.99	3.88	192.11	47000	7400	4800	1300	7400	540	
RS-07	8/26/1999	195.99	4.16	191.83	15000	3400	91	950	970	<5	
RS-07	11/10/1999	195.99	4.12	191.87	10000	2900	170	630	1200	<0.5	
RS-07	2/9/2000	195.99	3.98	192.01	9400	1400	120	480	600	<0.5	
RS-07	6/30/2000	195.99	4.04	191.95	8200	3300	190	430	540	<0.5	
RS-07	8/8/2000	195.99	4.06	191.93	11000	2300	150	430	520	<0.5	
RS-07	11/16/2000	195.99	4.04	191.95	5400	1500	40	240	200	<0.5	
RS-07	3/8/2001	195.99	3.94	192.05	12000	3300	260	480	850	17	****
RS-07	5/31/2001	195.99	4.01	191.98	10000	1900	120	320	620	<100	****
RS-07	12/18/2001	195.99	4.81	191.18	2700	450	21	86	120	2.3	****

TABLE 1
GROUNDWATER ELEVATIONS AND CERTIFIED ANALYTICAL LABORATORY RESULTS FROM WATER SAMPLES
DESERT PETROLEUM, INC. SITE #793
4035 PARK BOULEVARD, OAKLAND, CALIFORNIA

ID#	(All concentrations in parts per billion [ug/L, ppb]) (AMSL = Above mean sea level)										
	DATE SAMPLED	WELL CASING ELEVATION (FEET AMSL)	DEPTH TO GROUND WATER (FEET)	GROUND WATER ELEVATION (FEET AMSL)	TPH-G (UG/L)	BENZENE (UG/L) (1.5)	TOLUENE (UG/L) (150)	ETHYL-BENZENE (UG/L) (300)	XYLENES (UG/L) (1800)	MTBE (UG/L) (13)	
(CALIFORNIA PUBLIC HEALTH GOAL)											
RS-07	2/19/2002	195.99	3.91	192.08	20000	2600	360	570	1900	11	****
RS-07	5/7/2002	195.99	3.97	192.02	9200	1400	120	360	780	6.6	****
RS-07	8/6/2002	195.99	4.06	191.93	8300	1300	71	250	480	<10	****
RS-07	11/5/2002	195.99	4.11	191.88	9300	1500	90	330	680	<10	****
RS-07	12/12/2002	195.99	4.13	191.86							
RS-07	3/13/2003	195.99	4.02	191.97	5500	990	51	180	330	6.1	****
RS-07	5/6/2003	195.99	3.98	192.01	4800	740	36	160	310	4.7	****
RS-07	8/13/2003	195.99	4.09	191.9	9400	1300	65	310	620	6.1	****
RS-07	11/20/2003	195.99	4.10	191.89	4800	700	13	110	110	<5	****
RS-07	1/22/2004	195.99	4.12	191.87							
RS-07	3/30/2004	195.99	4.05	191.94	3800	540	33	140	210	3.4	****
RS-07	6/10/2004	195.99	4.12	191.87	4000	740	22	82	130	2.8	****
RS-07	9/28/2004	195.99	4.18	191.81	5000	640	20	110	130	2.8	****
RS-07	12/8/2004	195.99	3.92	192.07	3700	290	18	130	190	0.56	****
RS-07	3/23/2005	195.99	4.00	191.99	4600	220	17	100	170	2.4	****
RS-07	6/1/2005	195.99	4.11	191.88	4700	660	41	140	290	3.7	****
RS-07	9/21/2005	195.99	4.14	191.85	4600	360	18	67	130	3.6	****
RS-07	12/7/2005	195.99	4.13	191.86	3400	160	10	89	86	1.2	****
RS-07	3/28/2006	195.99	3.93	192.06	1400	170	10	30	49	1.5	****
RS-07	6/21/2006	195.99	4.11	191.88	1400	170	10	30	49	1.5	****
RS-07	9/13/2006	195.99	4.13	191.86	4700	570	15	70	73	6	****
RS-07	12/21/2006	195.99	4.08	191.91	1600	100	3.7	37	30	1.1	****
RS-07	3/12/2007	195.99	3.98	192.01	1500	220	3.7	40	35	2.6	****
RS-08	12/14/1989										
RS-08	09/04/96										
RS-08	12/11/96										
RS-08	2/21/97										
RS-08	5/28/97										
RS-08	9/2/1997										
RS-08	11/24/1997										
RS-08	2/25/1998										
RS-08	7/8/1998										
RS-08	9/16/1998										
RS-08	11/24/1998										
RS-08	2/23/1999										
RS-08	5/5/1999										
RS-08	8/26/1999	214.67	7.25	207.42	160000	24000	35000	4200	24000	<5	
RS-08	11/10/1999	214.67	8.69	205.98	150000	21000	29000	3000	14000	<0.5	
RS-08	2/9/2000	214.67	7.23	207.44	14000	1900	3200	270	2300	<0.5	
RS-08	6/30/2000	214.67	3.99	210.68	6400	570	870	150	770	<0.5	
RS-08	8/8/2000	214.67	7.52	207.15	100000	24000	40000	2300	9900	<0.5	*
RS-08	11/16/2000	214.67	6.14	208.53	110000	14000	21000	2100	9600	<20	*
RS-08	3/8/2001	214.67	9.40	205.27	10000	740	840	220	990	<2	****
RS-08	5/31/2001	214.67	6.83	207.84	730	11	29	4.2	31	<5	****
RS-08	12/18/2001	214.67	7.14	207.53	4500	230	370	77	750	<0.5	****
RS-08	2/19/2002	214.67	7.69	206.98	780	33	21	5.1	45	<0.5	****
RS-08	5/7/2002	214.67	7.82	206.85	24000	1500	1800	830	2700	<10	****
RS-08	8/6/2002	214.67	13.46	201.21		0.04	feet floating product				
RS-08	11/5/2002	214.67	13.96	200.71		0.40	feet floating product				
RS-08	12/12/2002	214.67	14.38	200.29		0.08	feet floating product				
RS-08	3/13/2003	214.67	10.99	203.68	90000	1100	14000	2500	12000	<50	****
RS-08	5/6/2003	214.67	5.35	209.32	1600	6.7	46	21	170	<0.5	****

TABLE 1
GROUNDWATER ELEVATIONS AND CERTIFIED ANALYTICAL LABORATORY RESULTS FROM WATER SAMPLES
DESERT PETROLEUM, INC. SITE #793
4035 PARK BOULEVARD, OAKLAND, CALIFORNIA

ID#	(All concentrations in parts per billion [ug/L, ppb]) (AMSL = Above mean sea level)													
	DATE SAMPLED	WELL CASING ELEVATION (FEET AMSL)	DEPTH TO GROUND WATER (FEET)	GROUND WATER ELEVATION (FEET AMSL)	TPH-G (UG/L)	BENZENE (UG/L) (1.5)	TOLUENE (UG/L) (150)	ETHYL-BENZENE (UG/L) (300)	XYLENES (UG/L) (1800)	MTBE (UG/L) (13)				
(CALIFORNIA PUBLIC HEALTH GOAL)														
RS-08	8/13/2003	214.67	11.96	202.71	100000	1200	10000	2500	13000	<50	****			
RS-08	11/21/2003	214.67	12.30	202.37	100000	1700	10000	1700	12000	<25	****			
RS-08	1/22/2004	214.67	9.63	205.04										
RS-08	3/30/2004	214.67	8.70	205.97	18000	69	110	130	1200	<5	****			
RS-08	6/10/2004	214.67	10.65	204.02	33000	210	350	360	2300	<5	****			
RS-08	9/28/2004	214.67	9.00	205.67	6000	59	20	100	170	<1	****			
RS-08	12/8/2004	214.67	4.50	210.17	1100	<0.5	<0.5	<0.5	0.66	<0.5	****			
RS-08	3/23/2005	214.67	3.65	211.02	<50	<0.5	<0.5	<0.5	<0.5	<0.5	****			
RS-08	6/1/2005	214.67	9.70	204.97	4700	330	210	250	330	<0.5	****			
RS-08	9/21/2005	214.67			could not locate, under landscaping.									
RS-08	12/7/2005	214.67	12.76	201.91	30000	1100	1500	810	2800	<5	****			
RS-08	3/28/2006	214.67	3.42	211.25	<50	<0.5	<0.5	<0.5	<0.5	<0.5	****			
RS-08	6/21/2006	214.67	7.03	207.64	<50	<0.5	<0.5	<0.5	<0.5	<0.5	****			
RS-08	9/13/2006	214.67	11.13	203.54	29000	1600	2800	1300	4000	<2.5	****			
RS-08	12/21/2006	214.67	10.67	204	60000	1900	2000	1300	5200	<7	****			
RS-08	3/12/2007	214.67			dog in backyard, could not access well									
RS-09	12/14/1989													
RS-09	09/04/96													
RS-09	12/11/96													
RS-09	2/21/97													
RS-09	5/28/97													
RS-09	9/2/1997													
RS-09	11/24/1997													
RS-09	2/25/1998													
RS-09	7/8/1998													
RS-09	9/16/1998													
RS-09	11/24/1998													
RS-09	2/23/1999													
RS-09	5/5/1999													
RS-09	8/26/1999	195.63	7.46	188.17	17000	3500	1200	360	1600	180	*			
RS-09	11/10/1999	195.63	7.91	187.72	2800	520	62	46	130	<0.5				
RS-09	2/9/2000	195.63	6.09	189.54	3400	650	74	64	130	<0.5				
RS-09	6/30/2000	195.63	6.77	188.86	3000	600	79	74	120	<0.5				
RS-09	8/8/2000	195.63	7.32	188.31	4900	500	430	160	530	<0.5				
RS-09	11/16/2000	195.63	6.33	189.3	3000	350	220	90	220	<0.5				
RS-09	3/8/2001	195.63	4.93	190.7	<50	3.4	<0.5	<0.5	<0.5	<0.5	****			
RS-09	5/31/2001	195.63	4.01	191.62	510	96	6	6.2	9.1	5.5	****			
RS-09	12/18/2001	195.63	4.81	190.82	210	11	1.8	3.9	7.6	<0.5	****			
RS-09	2/19/2002	195.63	4.99	190.64	<50	<0.5	<0.5	<0.5	<0.5	<0.5	****			
RS-09	5/7/2002	195.63	6.08	189.55	130	7.9	<0.5	1.2	<0.5	0.67	****			
RS-09	8/6/2002	195.63	6.93	188.7	380	29	1.2	2.3	2.9	3.1	****			
RS-09	11/5/2002	195.63	7.53	188.1	1800	240	9	27	110	8.6	****			
RS-09	12/12/2002	195.63	7.23	188.4										
RS-09	3/13/2003	195.63	5.73	189.9	410	30	3	6	9.5	3.3	****			
RS-09	5/6/2003	195.63	4.83	190.8	910	72	15	9.2	26	5.5	****			
RS-09	8/13/2003	195.63	8.24	187.39	810	20	<0.5	2.4	1.6	3.6	****			
RS-09	11/20/2003	195.63	6.99	188.64	3600	920	5.3	6.1	20	30	****			
RS-09	1/22/2004	195.63	5.43	190.2										
RS-09	3/30/2004	195.63	5.07	190.56	1900	360	9.3	19	48	21	****			
RS-09	6/10/2004	195.63	6.18	189.45	950	180	3	8.4	14	8.7	****			
RS-09	9/28/2004	195.63	6.94	188.69	4900	1800	5.9	5	16	31	****			
RS-09	12/8/2004	195.63	4.42	191.21	74	<0.5	<0.5	<0.5	<0.5	<0.5	****			

TABLE 1
GROUNDWATER ELEVATIONS AND CERTIFIED ANALYTICAL LABAORATAORY RESULTS FROM WATER SAMPLES
DESERT PETROLEUM, INC. SITE #793
4035 PARK BOULEVARD, OAKLAND, CALIFORNIA

ID#	(All concentrations in parts per billion [ug/L, ppb]) (AMSL = Above mean sea level)									
	DATE SAMPLED	WELL CASING ELEVATION (FEET AMSL)	DEPTH TO GROUND WATER (FEET)	GROUND WATER ELEVATION (FEET AMSL)	TPH-G (UG/L)	BENZENE (UG/L) (1.5)	TOLUENE (UG/L) (150)	ETHYL-BENZENE (UG/L) (300)	XYLENES (UG/L) (1800)	MTBE (UG/L) (13)
	(CALIFORNIA PUBLIC HEALTH GOAL)									
RS-09	3/23/2005	195.63	4.10	191.53	540	99	1.1	1.1	4.5	3.6****
RS-09	6/1/2005	195.63	5.12	190.51	3300	170	14	77	87	12****
RS-09	9/21/2005	195.63	6.60	189.03	330	1.2	<0.5	<0.5	0.58	1.8****
RS-09	12/7/2005	195.63	5.92	189.71	88	<0.5	<0.5	<0.5	0.58	1.2****
RS-09	3/28/2006	195.63	3.76	191.87	360	11	0.72	3.6	2.5	7.1****
RS-09	6/21/2006	195.63	5.40	190.23	360	11	0.72	3.6	2.5	7.1****
RS-09	9/13/2006	195.63	6.45	189.18	350	2.4	<0.5	1.1	4.2	2.9****
RS-09	12/21/2006	195.63	5.82	189.81	85	<0.5	<0.5	<0.5	<0.5	0.81****
RS-09	3/12/2007	195.63	5.08	190.55	1000	25	12	14	40	7.5****
RS-10	12/14/1989									
RS-10	09/04/96									
RS-10	12/11/96									
RS-10	2/21/97									
RS-10	5/28/97									
RS-10	9/2/1997									
RS-10	11/24/1997									
RS-10	2/25/1998									
RS-10	7/8/1998									
RS-10	9/16/1998									
RS-10	11/24/1998									
RS-10	2/23/1999									
RS-10	5/5/1999									
RS-10	8/26/1999	208.46	3.76	204.7	5100	160	340	190	1000	32*
RS-10	11/10/1999	208.46	3.83	204.63	500	7	2	2	4	<0.5
RS-10	2/9/2000	208.46	0.31	208.15	100	4	3	1	6	<0.5
RS-10	6/30/2000	208.46	2.22	206.24	640	5	2	4	2	<0.5
RS-10	8/8/2000	208.46	2.46	206	460	2	2	2	7	<0.5
RS-10	11/16/2000	208.46	2.46	206	360	1	1	2	<1	<0.5
RS-10	3/8/2001	208.46	2.82	205.64	53	<0.5	<0.5	<0.5	<0.5	<0.5****
RS-10	5/31/2001	208.46	4.93	203.53	210	<0.5	<0.5	1.5	5	<5****
RS-10	12/18/2001	208.46	2.10	206.36	<50	<0.5	<0.5	<0.5	<0.5	<0.5****
RS-10	2/19/2002	208.46	2.29	206.17	<50	<0.5	<0.5	<0.5	<0.5	<0.5****
RS-10	5/7/2002	208.46	2.92	205.54	<50	<0.5	<0.5	<0.5	<0.5	<0.5****
RS-10	8/6/2002	208.46	4.11	204.35	<50	<0.5	0.7	<0.5	1.6	<0.5****
RS-10	11/5/2002	208.46	4.05	204.41	54	<0.5	1.2	<0.5	1.1	<0.5****
RS-10	12/12/2002	208.46	6.81	201.65						
RS-10	3/13/2003	208.46	3.00	205.46	<50	<0.5	<0.5	<0.5	<0.5	<0.5****
RS-10	5/6/2003	208.46	2.55	205.91	<50	<0.5	<0.5	<0.5	<0.5	<0.5****
RS-10	8/13/2003	208.46	3.68	204.78	<50	<0.5	<0.5	<0.5	<0.5	<0.5****
RS-10	11/20/2003	208.46	4.45	204.01	<50	<0.5	<0.5	<0.5	<0.5	<0.5****
RS-10	1/22/2004	208.46								
RS-10	3/30/2004	208.46	3.05	205.41	<50	<0.5	<0.5	<0.5	<0.5	<0.5****
RS-10	6/10/2004	208.46	4.85	203.61	<50	<0.5	<0.5	<0.5	<0.5	<0.5****
RS-10	9/28/2004	208.46	6.75	201.71	<50	4.6	<0.5	<0.5	<0.5	<0.5****
RS-10	12/8/2004	208.46	1.74	206.72	<50	<0.5	<0.5	<0.5	<0.5	<0.5****
RS-10	3/23/2005	208.46	1.85	206.61	<50	<0.5	<0.5	<0.5	<0.5	<0.5****
RS-10	6/1/2005	208.46	2.88	205.58	<50	<0.5	<0.5	<0.5	<0.5	<0.5****
RS-10	9/21/2005	208.46	4.35	204.11	<50	<0.5	<0.5	<0.5	<0.5	<0.5****
RS-10	12/7/2005	208.46	3.38	205.08	<50	<0.5	<0.5	<0.5	<0.5	<0.5****
RS-10	3/28/2006	208.46	1.75	206.71	<50	<0.5	<0.5	<0.5	<0.5	<0.5****
RS-10	6/21/2006	208.46	2.91	205.55	<50	<0.5	<0.5	<0.5	<0.5	<0.5****
RS-10	9/13/2006	208.46	4.18	204.28	<50	0.86	<0.5	<0.5	<0.5	<0.5****

TABLE 1
GROUNDWATER ELEVATIONS AND CERTIFIED ANALYTICAL LABAORATAORY RESULTS FROM WATER SAMPLES
DESERT PETROLEUM, INC. SITE #793
4035 PARK BOULEVARD, OAKLAND, CALIFORNIA

ID#	(All concentrations in parts per billion [ug/L, ppb]) (AMSL = Above mean sea level)									
	DATE SAMPLED	WELL CASING ELEVATION (FEET AMSL)	DEPTH TO GROUND WATER (FEET)	GROUND WATER ELEVATION (FEET AMSL)	TPH-G (UG/L)	BENZENE (UG/L) (1.5)	TOLUENE (UG/L) (150)	ETHYL-BENZENE (UG/L) (300)	XYLENES (UG/L) (1800)	MTBE (UG/L) (13)
RS-10	12/21/2006	208.46	2.78	205.68	<50	0.86	<0.5	<0.5	<0.5	<0.5 ****
RS-10	3/12/2007	208.46	2.80	205.66	<50	<0.5	<0.5	<0.5	<0.5	<0.5 ****
R1	12/14/1989									
R1	09/04/96	227.69	15.00	212.69	1800	1100	3	29	< 10	< 30
R1	12/11/96	227.69	10.30	217.39	<50	<0.5	< 0.5	< 0.5	< 1	4
R1	2/21/97	227.69	11.88	215.81	2500	670	9	3	13	<0.5 *
R1	5/28/97	227.69	14.03	213.66	24000	4300	36	2000	370	<0.5 *
R1	9/2/1997	227.69	14.98	212.71	4400	320	6	340	72	20
R1	11/24/1997	227.69	14.06	213.63	100	39	1	18	10	<0.5
R1	2/25/1998	227.69	8.93	218.76	1200	400	8	13	150	<0.5
R1	7/8/1998	227.69	11.36	216.33	68	14	< 0.5	< 0.5	< 1	<1 *
R1	9/16/1998	227.69	13.30	214.39	16000	3400	92	< 0.5	410	<1 *
R1	11/24/1998	227.69	10.72	216.97	340	19	1.6	35	9.7	<0.5
R1	2/23/1999	227.69	9.34	218.35	60	16	0.6	5.6	1.2	<0.5
R1	5/5/1999	227.69	11.30	216.39	1300	290	3	150	1	15
R1	8/26/1999	227.69	13.97	213.72	6500	630	<0.5	1300	<1	<1
R1	11/10/1999	227.69	13.73	213.96	480	12	4	22	9	<0.5
R1	2/9/2000	227.69	13.10	214.59	<50	8	<0.5	1	<1	<0.5
R1	6/30/2000	227.69	13.42	214.27	2600	350	35	1900	220	<0.5
R1	8/8/2000	227.69	14.25	213.44	10000	910	76	2100	390	<0.5
R1	3/8/2001	227.69	13.72	213.97	<50	<0.5	<0.5	<0.5	<0.5	<0.5 **
R1	3/8/2001	227.69	13.72	213.97	<50	<0.5	<0.5	<0.5	<0.5	<0.5 ****
R1	5/31/2001	227.69	15.77	211.92	3800	400	16	470	67	<5 ****
R1	12/18/2001	227.69	9.90	217.79	<50	<0.5	<0.5	1.5	<0.5	<0.5 ****
R1	2/19/2002	227.69	10.86	216.83	<50	<0.5	<0.5	<0.5	<0.5	<0.5 ****
R1	5/7/2002	227.69	16.17	211.52	53	3.3	<0.5	1	<0.5	<0.5 ****
R1	8/6/2002	227.69	16.83	210.86	<50	<0.5	<0.5	<0.5	<0.5	<0.5 ****
R1	11/5/2002	227.69	16.92	210.77	dry					

TABLE 1
GROUNDWATER ELEVATIONS AND CERTIFIED ANALYTICAL LABORATORY RESULTS FROM WATER SAMPLES
DESERT PETROLEUM, INC. SITE #793
4035 PARK BOULEVARD, OAKLAND, CALIFORNIA

ID#	(All concentrations in parts per billion [ug/L, ppb]) (AMSL = Above mean sea level)										
	DATE SAMPLED	WELL CASING ELEVATION (FEET AMSL)	DEPTH TO GROUND WATER (FEET)	GROUND WATER ELEVATION (FEET AMSL)	TPH-G (UG/L)	BENZENE (UG/L) (1.5)	TOLUENE (UG/L) (150)	ETHYL-BENZENE (UG/L) (300)	XYLENES (UG/L) (1800)	MTBE (UG/L) (13)	
(CALIFORNIA PUBLIC HEALTH GOAL)											
R2	5/28/97	230.68	13.10	217.58	36000	14000	63	260	220	<0.5	*
R2	9/2/1997	230.68	14.16	216.52	30000	12000	330	1000	790	47	*
R2	11/24/1997	230.68	14.71	215.97	41000	15000	830	1500	4200	<0.5	*
R2	2/25/1998	230.68	7.39	223.29	800	400	<0.5	<0.5	15	<0.5	*
R2	7/8/1998	230.68	11.27	219.41	290	31	< 0.5	1	< 1	2	*
R2	9/16/1998	230.68	13.73	216.95	6600	11000	24	<0.5	35	<1	*
R2	11/24/1998	230.68	11.67	219.01	6100	<0.5	36	<0.5	21	<0.5	*
R2	2/23/1999	230.68	7.55	223.13	1100	310	3	2	26	<0.5	*
R2	5/5/1999	230.68	10.89	219.79	11000	5300	7	36	7	8	*
R2	8/26/1999	227.28	13.14	214.14	6700	940	33	190	240	<1	*
R2	11/10/1999	227.28	14.42	212.86	5100	2600	160	1800	8100	<0.5	*
R2	2/9/2000	227.28	12.45	214.83	4700	1400	110	130	340	<0.5	*
R2	6/30/2000	227.28	12.94	214.34	7100	3200	110	300	480	<0.5	*
R2	8/8/2000	227.28	13.58	213.7	30000	13000	250	1000	2700	<0.5	*
R2	11/16/2000	227.28	14.33	212.95	44000	17000	230	790	3600	<0.5	*
R2	3/8/2001	227.28	11.15	216.13	2300	640	8.6	61	170	<2	****
R2	5/31/2001	227.28	13.38	213.9	2200	580	12	72	100	<25	****
R2	12/18/2001	227.28	12.35	214.93	4900	2000	120	44	280	<5	****
R2	2/19/2002	227.28	11.32	215.96	2100	1200	<5	14	<5	<5	****
R2	5/7/2002	227.28	13.15	214.13	2500	660	7.5	170	26	<2.5	****
R2	8/6/2002	227.28	14.51	212.77	6300	1800	150	220	340	<5	****
R2	11/5/2002	227.28	15.46	211.82	11000	3000	140	57	620	<20	****
R2	12/12/2002	227.28	15.70	211.58							
R2	3/13/2003	227.28	12.96	214.32	580	200	1.2	5.4	3.8	<1	****
R2	5/6/2003	227.28	11.14	216.14	70	25	<0.5	<0.5	1.3	<0.5	****
R2	8/13/2003	227.28	14.01	213.27	1800	340	8	49	12	<2	****
R2	11/20/2003	227.28	15.35	211.93	8000	1400	46	57	490	<5	****
R2	1/22/2004	227.28	12.10	215.18							
R2	3/30/2004	227.28	11.48	215.8	<50	3	<0.5	<0.5	<0.5	<0.5	****
R2	6/10/2004	227.28	13.95	213.33	77	7.7	<0.5	<0.5	<0.5	<0.5	****
R2	9/28/2004	227.28	14.80	212.48	500	120	2	25	2.7	0.71	****
R2	12/8/2004	227.28	12.25	215.03	100	8.5	<0.5	<0.5	5	<0.5	****
R2	3/23/2005	227.28	7.82	219.46	57	8.4	<0.5	<0.5	<0.5	<0.5	****
R2	6/1/2005	227.28	12.14	215.14	85	5.2	<0.5	<0.5	<0.5	<0.5	****
R2	9/21/2005	227.28	13.97	213.31	900	120	1.3	2.5	4.8	<0.5	****
R2	12/7/2005	227.28	14.51	212.77	150	8.4	<0.5	<0.5	0.5	<0.5	****
R2	3/28/2006	227.28	7.30	219.98	<50	7.7	<0.5	<0.5	<0.5	<0.5	****
R2	6/21/2006	227.28	11.90	215.38	<50	7.7	<0.5	<0.5	<0.5	<0.5	****
R2	9/13/2006	227.28	13.66	213.62	54	0.52	<0.5	<0.5	<0.5	<0.5	****
R2	12/21/2006	227.28	14.43	212.85	<50	<0.5	<0.5	<0.5	<0.5	<0.5	****
R2	3/12/2007	227.28	12.37	214.91	210	63	<0.5	1.8	<0.5	<0.5	****
R3	12/14/1989										
R3	09/04/96	230.32	9.90	220.42	<50	<0.5	<0.5	<0.5	<2	<5	
R3	12/11/96	230.32	8.18	222.14	<50	<0.5	<0.5	<0.5	<1	5	
R3	2/21/97	230.32	6.76	223.56	340	35	59	8	54	<0.5	*
R3	5/28/97	230.32	9.98	220.34	<50	<0.5	<0.5	<0.5	<1	<0.5	*
R3	9/2/1997	230.32	10.86	219.46	<50	4	<0.5	<0.5	<1	<0.5	*
R3	11/24/1997	230.32	11.20	219.12	not enough water to sample. No sample						
R3	2/25/1998	230.32	3.42	226.9	<50	<0.5	<0.5	<0.5	<1	<0.5	*
R3	7/8/1998	230.32	8.78	221.54	140	<0.5	<0.5	4	24	<1	*
R3	9/16/1998	230.32	10.38	219.94	<50	<0.5	<0.5	<0.5	<1	<1	*
R3	11/24/1998	230.32	11.12	219.2	not enough water to sample. No sample						

TABLE 1
GROUNDWATER ELEVATIONS AND CERTIFIED ANALYTICAL LABORATORY RESULTS FROM WATER SAMPLES
DESERT PETROLEUM, INC. SITE #793
4035 PARK BOULEVARD, OAKLAND, CALIFORNIA

ID#	(All concentrations in parts per billion [ug/L, ppb]) (AMSL = Above mean sea level)										
	DATE SAMPLED	WELL CASING ELEVATION (FEET AMSL)	DEPTH TO GROUND WATER (FEET)	GROUND WATER ELEVATION (FEET AMSL)	TPH-G (UG/L)	BENZENE (UG/L) (1.5)	TOLUENE (UG/L) (150)	ETHYL-BENZENE (UG/L) (300)	XYLENES (UG/L) (1800)	MTBE (UG/L) (13)	
(CALIFORNIA PUBLIC HEALTH GOAL)											
R3	2/23/1999	230.32	3.95	226.37	<50	<0.5	<0.5	<0.5	<1	<0.5	*
R3	5/5/1999	230.32	7.58	222.74	80	9	<0.5	<0.5	<1	6	
R3	8/26/1999	227.25	10.76	216.49	<50	2	<0.5	<0.5	<1	1	*
R3	11/10/1999	227.25	11.09	216.16	140	3	4	1	11	<0.5	
R3	2/9/2000	227.25	8.76	218.49	<50	2	<0.5	<0.5	<1	<0.5	
R3	6/30/2000	227.25	9.67	217.58	<50	0.7	<0.5	1	1	<0.5	
R3	8/8/2000	227.25	10.44	216.81	72	<0.5	<0.5	<0.5	<1	<0.5	
R3	11/16/2000	227.25	10.26	216.99	110	4	1	<0.5	3	<0.5	
R3	3/8/2001	227.25	6.54	220.71	<50	<0.5	<0.5	<0.5	<0.5	<0.5	****
R3	5/31/2001	227.25	10.01	217.24	<50	<0.5	<0.5	<0.5	<0.5	<0.5	****
R3	12/18/2001	227.25	6.79	220.46	<50	<0.5	<0.5	<0.5	<0.5	<0.5	****
R3	2/19/2002	227.25	7.86	219.39	<50	<0.5	<0.5	<0.5	<0.5	<0.5	****
R3	5/7/2002	227.25	9.20	218.05	<50	<0.5	<0.5	<0.5	<0.5	<0.5	****
R3	8/6/2002	227.25	10.62	216.63	<50	<0.5	<0.5	<0.5	<0.5	<0.5	****
R3	11/5/2002	227.25	11.07	216.18	<50	<0.5	<0.5	<0.5	<0.5	<0.5	****
R3	12/12/2002	227.25	11.28	215.97							
R3	3/13/2003	227.25	8.69	218.56	<50	<0.5	<0.5	<0.5	<0.5	<0.5	****
R3	5/6/2003	227.25	8.02	219.23	<50	<0.5	<0.5	<0.5	<0.5	<0.5	****
R3	8/13/2003	227.25	dry		DRY						
R3	11/20/2003	227.25	dry		DRY						
R3	1/22/2004	227.25	7.30	219.95							
R3	3/30/2004	227.25	7.85	219.4	<50	<0.5	<0.5	<0.5	<0.5	<0.5	****
R3	6/10/2004	227.25	10.30	216.95	<50	<0.5	<0.5	<0.5	<0.5	<0.5	****
R3	9/28/2004	227.25	dry		DRY						
R3	12/8/2004	227.25	9.00	218.25	<50	<0.5	<0.5	<0.5	<0.5	<0.5	****
R3	3/23/2005	227.25	4.90	222.35	<50	<0.5	<0.5	<0.5	<0.5	<0.5	****
R3	6/1/2005	227.25	8.60	218.65	<50	<0.5	<0.5	<0.5	<0.5	<0.5	****
R3	9/21/2005	227.25	10.80	216.45	<50	<0.5	<0.5	<0.5	<0.5	<0.5	****
R3	12/7/2005	227.25	11.12	216.13	no sample water in shoe of casing, not representative						
R3	3/28/2006	227.25	3.72	223.53	<50	<0.5	<0.5	<0.5	<0.5	<0.5	****
R3	6/21/2006	227.25	8.82	218.43	<50	<0.5	<0.5	<0.5	<0.5	<0.5	****
R3	9/13/2006	227.25	10.52	216.73	<50	<0.5	<0.5	<0.5	<0.5	<0.5	****
R3	12/21/2006	227.25	9.97	217.28	<50	<0.5	<0.5	<0.5	<0.5	<0.5	****
R3	3/12/2007	227.25	7.45	219.8	<50	<0.5	<0.5	<0.5	<0.5	<0.5	****
T 1	12/14/1989										
T 1	09/04/96										
T 1	12/11/96										
T 1	2/21/97										
T 1	5/28/97										
T 1	9/2/1997										
T 1	11/24/1997										
T 1	2/25/1998										
T 1	7/8/1998										
T 1	9/16/1998										
T 1	11/24/1998										
T 1	2/23/1999										
T 1	5/5/1999										
T 1	8/26/1999	195.11	2.44	192.67	40000	7200	5000	950	8100	53	*
T 1	11/10/1999	195.11	2.23	192.88	46000	5600	3600	910	6500	<0.5	
T 1	2/9/2000	195.11	2.22	192.89	35000	2900	5700	720	6600	<0.5	
T 1	6/30/2000	195.11	2.22	192.89	30000	3400	3200	950	4600	<5	
T 1	8/8/2000	195.11	2.73	192.38	8900	1600	760	260	870	<5	

TABLE 1
GROUNDWATER ELEVATIONS AND CERTIFIED ANALYTICAL LABAORATAORY RESULTS FROM WATER SAMPLES
DESERT PETROLEUM, INC. SITE #793
4035 PARK BOULEVARD, OAKLAND, CALIFORNIA

ID#	(All concentrations in parts per billion [ug/L, ppb]) (AMSL = Above mean sea level)									
	DATE SAMPLED	WELL CASING ELEVATION (FEET AMSL)	DEPTH TO GROUND WATER (FEET)	GROUND WATER ELEVATION (FEET AMSL)	TPH-G (UG/L)	BENZENE (UG/L) (1.5)	TOLUENE (UG/L) (150)	ETHYL-BENZENE (UG/L) (300)	XYLENES (UG/L) (1800)	MTBE (UG/L) (13)
(CALIFORNIA PUBLIC HEALTH GOAL)										
T 1	11/16/2000	195.11	2.72	192.39	4000	1300	92	80	290	<0.5
T 1	3/8/2001	195.11	2.12	192.99	25000	4400	3400	770	3200	26****
T 1	5/31/2001	195.11	2.30	192.81	8900	940	210	340	1500	<50****
T 1	12/18/2001	195.11	2.20	192.91	48000	3700	5500	1200	5300	24****
T 1	2/19/2002	195.11	1.96	193.15	64000	8600	6000	1700	6800	55****
T 1	5/7/2002	195.11	2.22	192.89	41000	9200	910	2000	6200	62****
T 1	8/6/2002	195.11	2.32	192.79	28000	5500	240	1300	2600	32****
T 1	11/5/2002	195.11	2.52	192.59	11000	3000	65	660	610	18****
T 1	12/12/2002	195.11	2.55	192.56						
T 1	3/13/2003	195.11	2.23	192.88	930	150	17	23	60	2.6****
T 1	5/6/2003	195.11	2.37	192.74	6800	1000	230	310	820	10****
T 1	8/13/2003	195.11	2.41	192.7	9600	1500	110	440	910	10****
T 1	11/20/2003	195.11	2.50	192.61	10000	1800	120	520	510	11****
T 1	1/22/2004	195.11								
T 1	3/30/2004	195.11			15000	1800	660	610	2000	8.6****
T 1	6/10/2004	195.11	2.40	192.71	5500	570	2	240	130	2.7****
T 1	9/28/2004	195.11	2.52	192.59	8700	2600	100	450	15	15****
T 1	12/8/2004	195.11	1.96	193.15	2900	820	32	14	47	6.9****
T 1	3/23/2005	195.11	car		2800	220	3	120	76	1.7****
T 1	6/1/2005	195.11	2.25	192.86	46000	14000	650	1900	2900	54****
T 1	9/21/2005	195.11	2.42	192.69	17000	4500	81	620	200	28****
T 1	12/7/2005	195.11	2.26	192.85	18000	4000	480	780	1100	25****
T 1	3/28/2006	195.11	car		27000	4400	1600	890	2700	20****
T 1	6/21/2006	195.11	2.48	192.63	27000	4400	1600	890	2700	20****
T 1	9/13/2006	195.11	2.43	192.68	12000	5100	88	230	320	22****
T 1	12/21/2006	195.11	2.28	192.83	18000	4600	620	850	2000	21****
T 1	3/12/2007	195.11	2.24	192.87	19000	4700	750	870	2300	16****
T 2	1/22/2004	195.3	2.54	192.76	see T1 for sample results					
T 2	3/30/2004	195.3	2.50	192.8	see T1 for sample results					
T 2	6/10/2004	195.3	2.60	192.7	see T1 for sample results					
T 2	9/28/2004	195.3	car		see T1 for sample results					
T 2	12/8/2004	195.3	2.04	193.26	see T1 for sample results					
T 2	3/23/2005	195.3	car		see T1 for sample results					
T 2	6/1/2005	195.3	car		see T1 for sample results					
T 2	9/21/2005	195.3	car		see T1 for sample results					
T 2	12/7/2005	195.3	car		see T1 for sample results					
T 2	3/28/2006	195.3	2.00	193.3	see T1 for sample results					
T 2	6/21/2006	195.3	car		see T1 for sample results					
T 2	9/13/2006	195.3	car		see T1 for sample results					
T 2	12/21/2006	195.3	car		see T1 for sample results					
T 2	3/12/2007	195.3	car		see T1 for sample results					
T 3	1/22/2004	202.38			see T1 for sample results					
T 3	6/10/2004	202.38	9.80	192.58	see T1 for sample results					
T 3	9/28/2004	202.38	9.90	192.48	see T1 for sample results					
T 3	12/8/2004	202.38	9.24	193.14	see T1 for sample results					
T 3	3/23/2005	202.38	car		see T1 for sample results					
T 3	6/1/2005	202.38	car		see T1 for sample results					
T 3	9/21/2005	202.38	car		see T1 for sample results					
T 3	12/7/2005	202.38	car		see T1 for sample results					
T 3	3/28/2006	202.38	car		see T1 for sample results					
T 3	6/21/2006	202.38	car		see T1 for sample results					

TABLE 1
GROUNDWATER ELEVATIONS AND CERTIFIED ANALYTICAL LABAORATAORY RESULTS FROM WATER SAMPLES
DESERT PETROLEUM, INC. SITE #793
4035 PARK BOULEVARD, OAKLAND, CALIFORNIA

ID#	(All concentrations in parts per billion [ug/L, ppb]) (AMSL = Above mean sea level)									
	DATE SAMPLED	WELL CASING ELEVATION (FEET AMSL)	DEPTH TO GROUND WATER (FEET)	GROUND WATER ELEVATION (FEET AMSL)	TPH-G (UG/L)	BENZENE (UG/L) (1.5)	TOLUENE (UG/L) (150)	ETHYL-BENZENE (UG/L) (300)	XYLENES (UG/L) (1800)	MTBE (UG/L) (13)
T 3	9/13/2006	202.38	car							
T 3	12/21/2006	202.38	car							
T 3	3/12/2007	202.38	car							
T 4	1/22/2004	197.48	4.70	192.78						
T 4	3/30/2004	197.48	4.66	192.82						
T 4	6/10/2004	197.48	4.76	192.72						
T 4	9/28/2004	197.48	4.86	192.62						
T 4	12/8/2004	197.48	4.21	193.27						
T 4	3/23/2005	197.48	4.35	193.13						
T 4	6/1/2005	197.48	car							
T 4	9/21/2005	197.48	car							
T 4	12/7/2005	197.48	car							
T 4	3/28/2006	197.48	car							
T 4	6/21/2006	197.48	car							
T 4	9/13/2006	197.48	car							
T 4	12/21/2006	197.48	car							
T 4	3/12/2007	197.48	car							
LF 1	1/22/2004	226.59	29.12	197.47						
LF 1	3/30/2004	226.59	26.45	200.14	<50	<0.5	<0.5	<0.5	<0.5	<0.5
LF 1	6/10/2004	226.59	27.57	199.02	<50	<0.5	<0.5	<0.5	<0.5	<0.5
LF 1	9/28/2004	226.59	28.72	197.87	<50	<0.5	<0.5	<0.5	<0.5	<0.5
LF 1	12/8/2004	226.59	car							
LF 1	3/23/2005	226.59	car							
LF 1	6/1/2005	226.59	car							
LF 1	9/21/2005	226.59	car							
LF 1	12/7/2005	226.59	26.67	199.92	<50	<0.5	<0.5	<0.5	<0.5	<0.5
LF 1	3/28/2006	226.59	25.25	201.34	<50	<0.5	<0.5	<0.5	<0.5	<0.5
LF 1	6/21/2006	226.59	23.05	203.54	<50	<0.5	<0.5	<0.5	<0.5	<0.5
LF 1	9/13/2006	226.59	29.23	197.36	<50	<0.5	<0.5	<0.5	<0.5	<0.5
LF 1	12/21/2006	226.59	32.12	194.47	<50	<0.5	<0.5	<0.5	<0.5	<0.5
LF 1	3/12/2007	226.59	31.47	195.12	<50	<0.5	<0.5	<0.5	<0.5	<0.5

ND BELOW LABORATORY DETECTION LIMITS
TPH-G TOTAL PETROLEUM HYDROCARBONS AS GASOLINE
* MTBE results confirmed by EPA Method 8260 (GC/MS)
** LAB REPORT HAD RS-6 AND RS-7 MISLABELED, RESAMPLE ON 7/30/98 CONFIRMED.
WELL CASING ELEVATION SURVEY 8-27-99, WADE HAMMOND No.6163,BENCH MARK CITY OF OAKLAND #2814
**** SAMPLES ANALYZED USING EPA METHOD 8260B

TABLE 2
GROUNDWATER REMOVAL
FORMER DP #793
4035 PARK BLVD., OAKLAND, CALIFORNIA

DATE PURGED	METER READING IN GALLONS RS5	METER READING IN GALLONS TRENCH	DEPTH TO TOP OF WATER IN FEET T1	GALLONS PURGED T1 and/or 1/4ly samples in GALLONS	ACCUMULATED GALLONS REMOVED FROM TRENCH & WELLS in GALLONS	Accumulated gallons removed from RS5 Gallons	TOTAL GALLONS REMOVED	INFLUENT CONCENTRATIONS EPA METHOD 8020 - 8260B						Sample Location	
								TPHg	BENZENE ug/L	TOLUENE ug/L	ETHYL-BENZENE ug/L	XYLENES ug/L	MTBE ug/L		
12/30/2004	1841818.0	1841818.0		0	92009	655963.4	747972.2								
1/14/2005	1854930.0	1855778.0		848	92857	669075.4	761932.2								
2/15/2005	1872001.8	1872001.8		0	92857	685299.2	778156.0								
3/23/2005	1903025.7	1903025.7		0	92857	716323.1	809179.9	7400	890	280	180	940	5.1	RS5	
4/13/2005	1915573.7	1915573.7		0	92857	728871.1	821727.9								
5/12/2005	1941964.2	1941964.2		0	92857	755261.6	848118.4								
6/7/2005	1962946.5	1962946.5		0	92857	776243.9	869100.7	3500	380	85	59	360	3	RS5	
7/19/2005	1997247.2	1997247.2		0	92857	810544.6	903401.4								
8/17/2005	2018578.5	2018578.5		0	92857	831875.9	924732.7								
9/21/2005	2027697.0	2027897.0		200	93057	840994.4	934051.2	790	34	4.7	0.89	99	<0.5	RS5	
10/20/2005	2036442.0	2036442.0		0	93057	849539.4	942596.2								
11/30/2005	2059176.2	2059176.2		0	93057	872273.6	965330.4								
12/26/2005	2076346.0	2076346.0		0	93057	889443.4	982500.2	2200	65	30	24	200	1.3	RS5	
1/26/2006	2101556.0	2101556.0		0	93057	914653.4	1007710.2								
2/28/2006	2128986.0	2128986.0		0	93057	942083.4	1035140.2								
3/22/2006	2145170.0	2145170.0		0	93057	958267.4	1051324.2	5000	370	130	70	550	2.4	RS5	
4/26/2006	2165192.0	2165192.0		0	93057	978289.4	1071346.2								
5/25/2006	2174462.0	2174462.0		0	93057	987559.4	1080616.2								
6/21/2006	2182331.0	2182485.0		154	93211	995428.4	1088639.2	990	42	6.5	2.4	110	<0.5	RS5	
7/28/2006	2193149.0	2193149.0		0	93211	1006092.4	1099303.2								
8/24/2006	2198715.0	2198715.0		0	93211	1011658.4	1104869.2								
9/7/2006	2198734.0	2198734.0		0	93211	1011677.4	1104888.2								installed new pump & motor.
10/6/2006	2205746.5	2205746.5		0	93211	1018689.9	1111900.7								
10/19/2006	2205756.5	2205756.5		0	93211	1018699.9	1111910.7								install new water totalizing meter
11/17/2006	2216741.5	2216741.5		0	93211	1029684.9	1122895.7								remove #1 water carbn unit, place #2 into #1 postion and new carbon into #2 position
12/28/2006	2240156.7	2240156.7		0	93211	1053100.1	1146310.9	4800	140	120	130	440	0.78	RS5	
1/25/2007	2252096.5	2252096.5		0	93211	1065039.9	1158250.7								
2/22/2007	2267063.5	2267063.5		0	93211	1080006.9	1173217.7								
3/12/2007	2276905.3	2277005.5		100	93311	1089848.7	1183159.7	4300	160	130	110	600	1.5	RS5	

ug/L micrograms per liter (parts per billion)
mg/L milligrams per liter (parts per million)
WESTERN GEO-ENGINEERS

< BELOW LABORATORY LOWER DETECTION LIMITS
mg/Kg milligrams per kilogram (parts per million)
TPHg TOTAL PETROLEUM HYDROCARBONS GASOLINE RANGE
MTBE METHYL TERTIARY BUTYL ETHER

* SAMPLED ON AUGUST 26, 1999
T1 Receptor Trench Well
RS5 Monitor Well RS5 (pumping well)

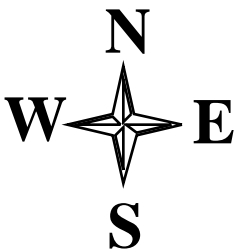
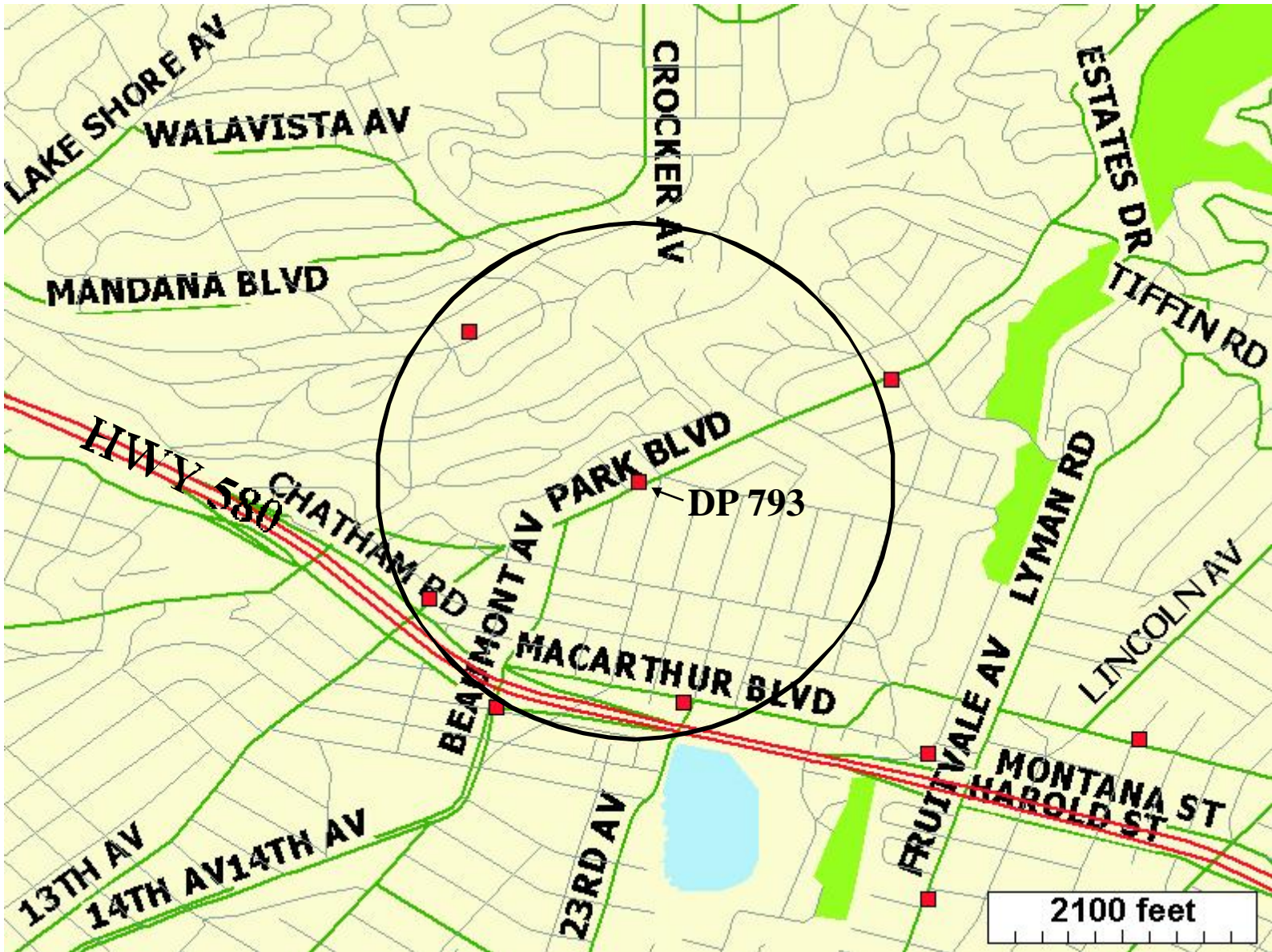


FIGURE 1
 GEOTRACKER
 AREA WELL & LUST MAP
 DP 793
 4035 PARK BLVD.
 OAKLAND, CA

- LUST SITES
- WELLS

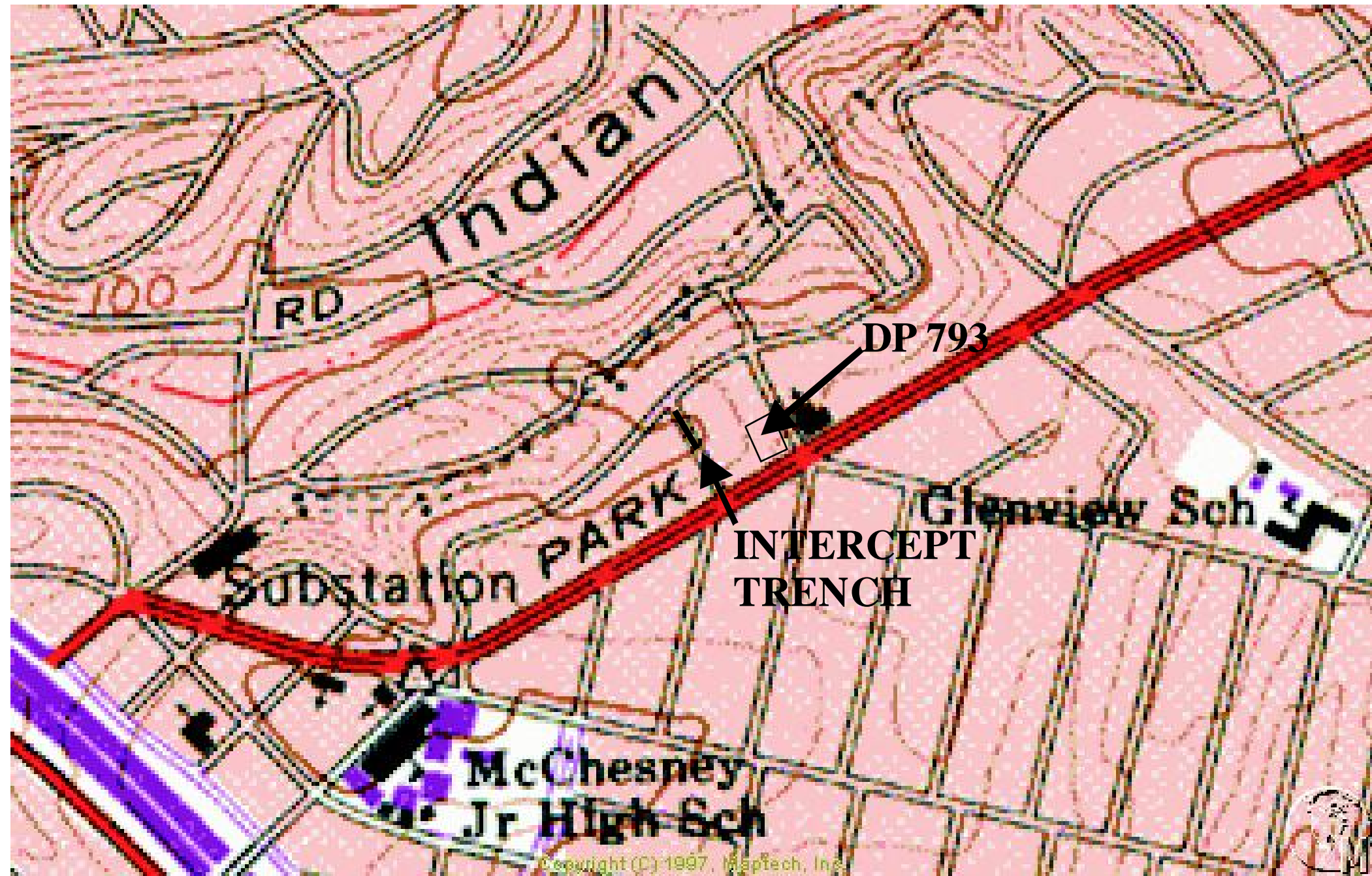


FIGURE 2
PORTION OF OAKLAND EAST 7.5 MINUTE USGS TOPOGRAPHIC MAP



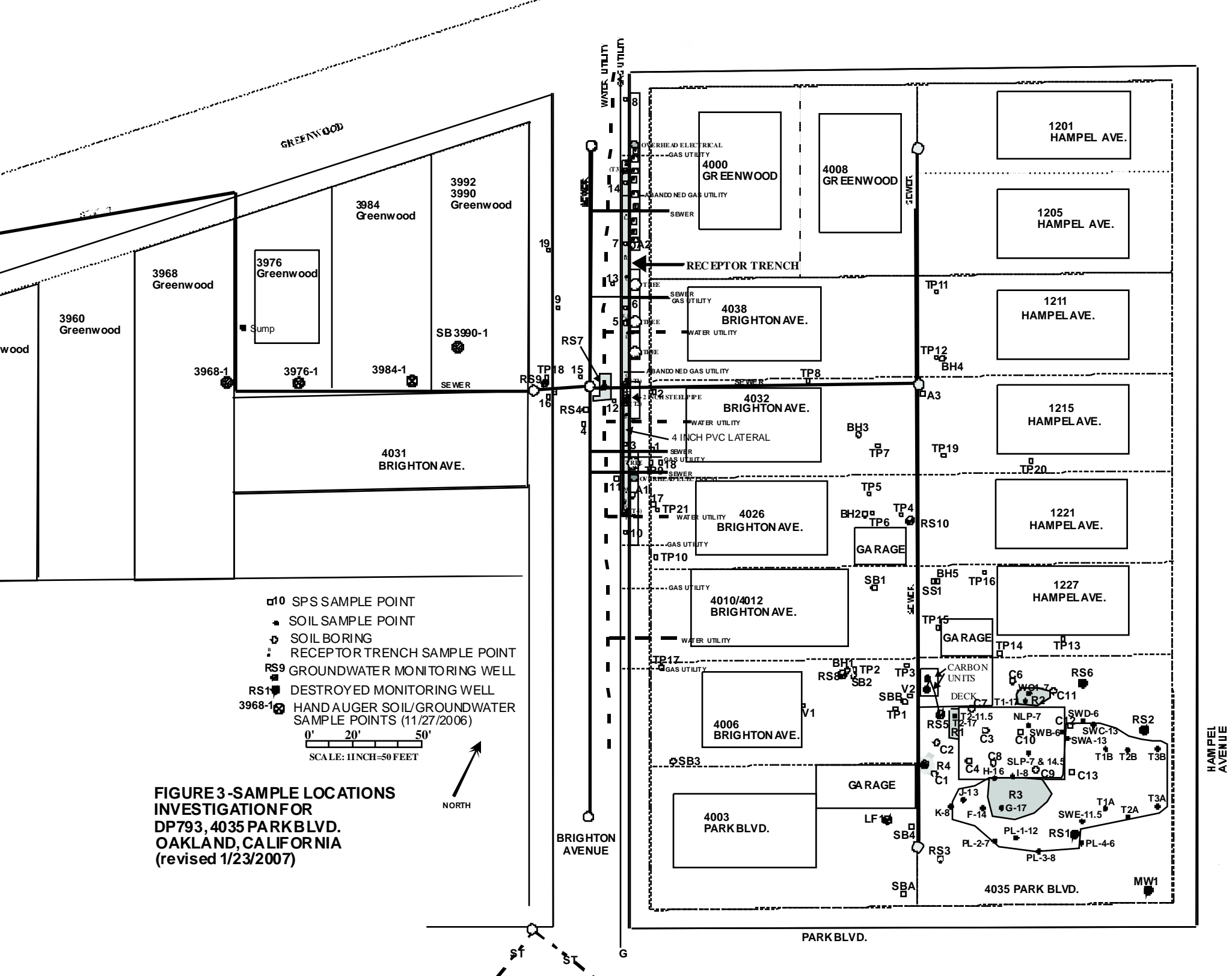


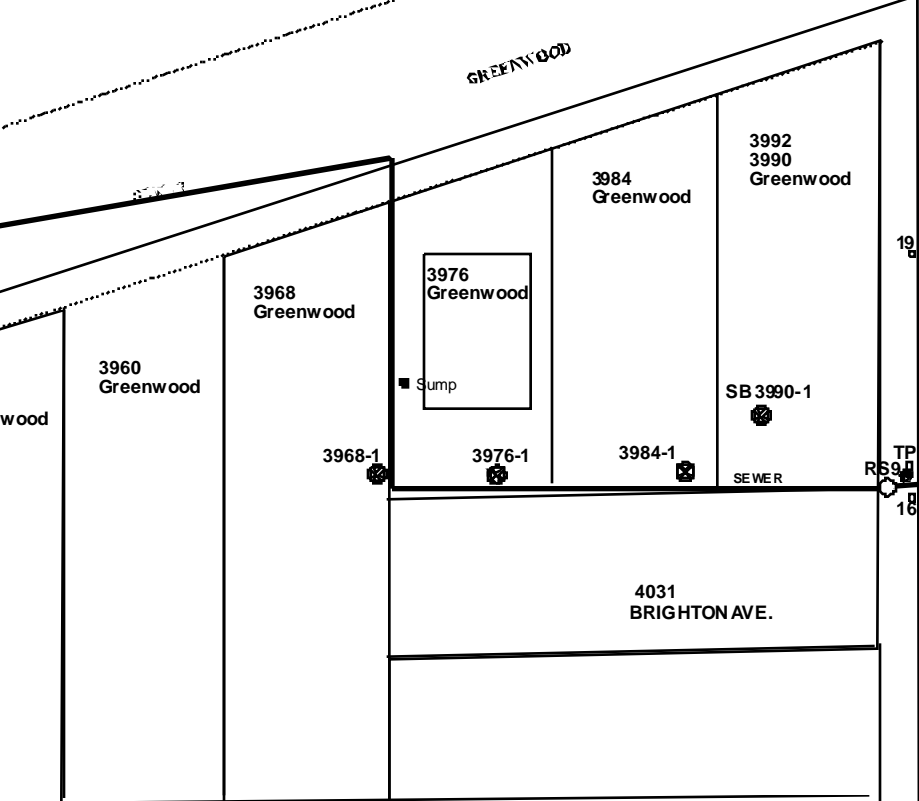
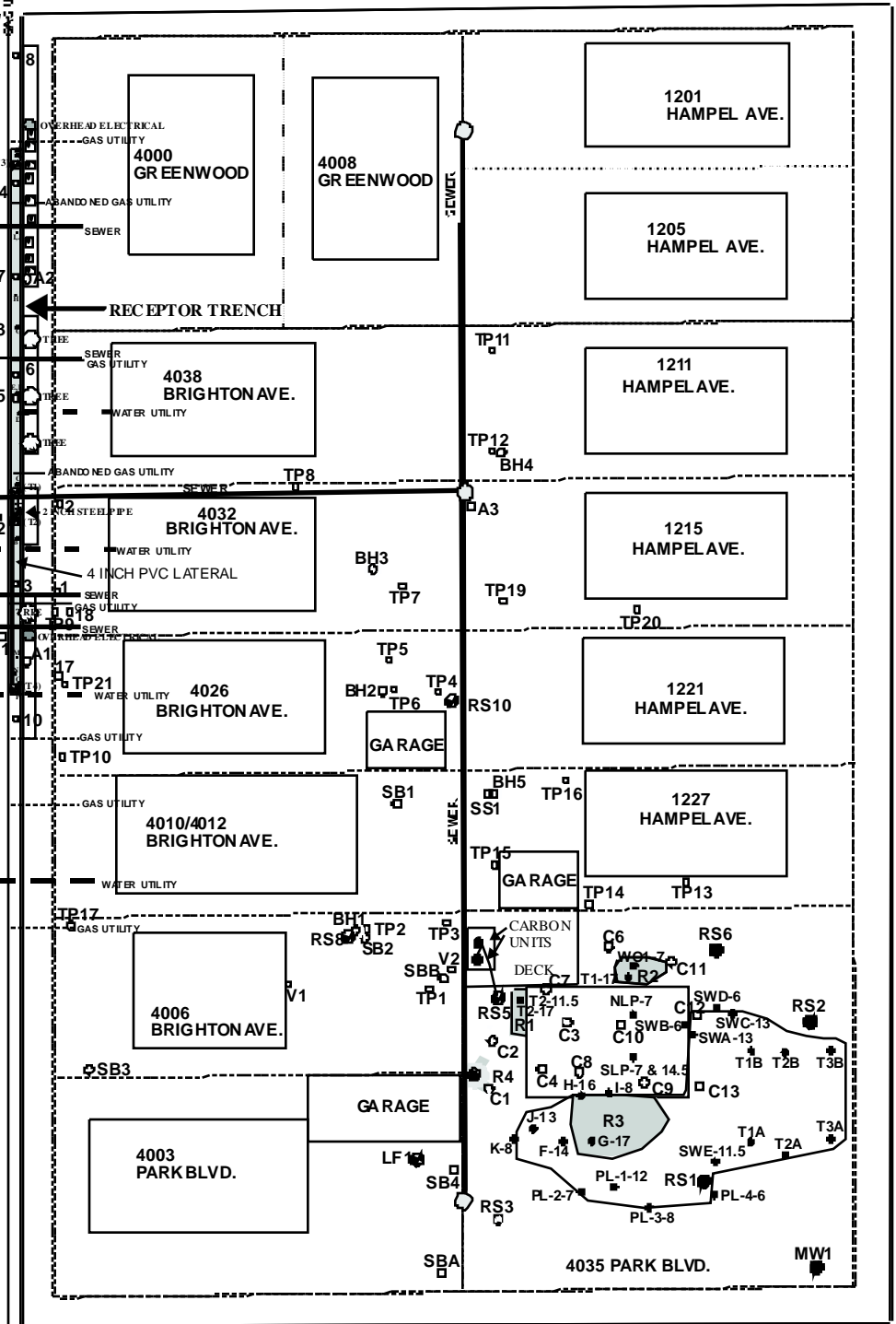
FIGURE 3-SAMPLE LOCATIONS INVESTIGATION FOR DP793, 4035 PARK BLVD. OAKLAND, CALIFORNIA (revised 1/23/2007)

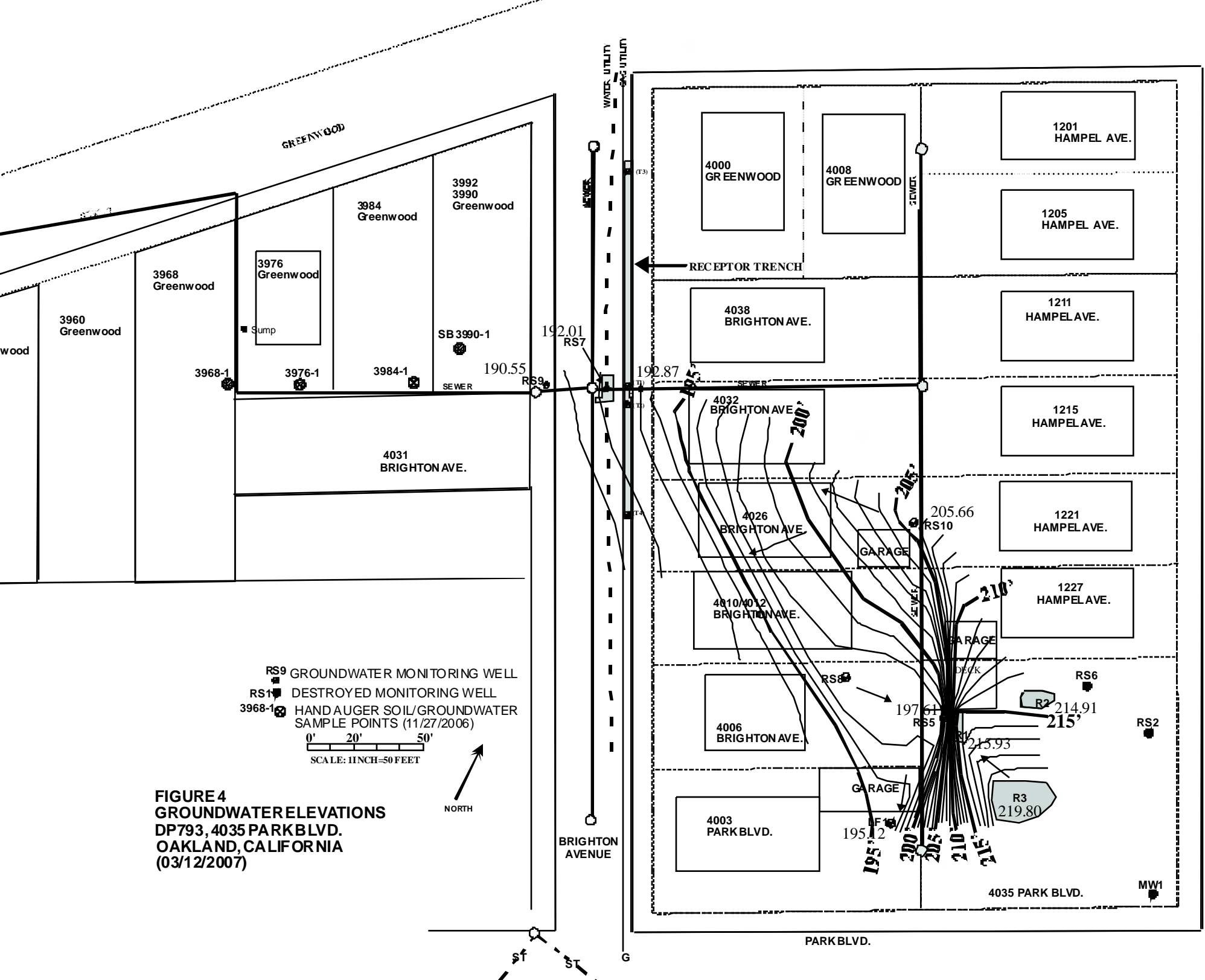


BRIGHTON AVENUE

PARK BLVD.

HAMPEL AVENUE





**FIGURE 4
GROUNDWATER ELEVATIONS
DP793, 4035 PARK BLVD.
OAKLAND, CALIFORNIA
(03/12/2007)**

RS9 GROUNDWATER MONITORING WELL
 RS1 DESTROYED MONITORING WELL
 3968-1 HAND AUGER SOIL/GROUNDWATER
 SAMPLE POINTS (11/27/2006)

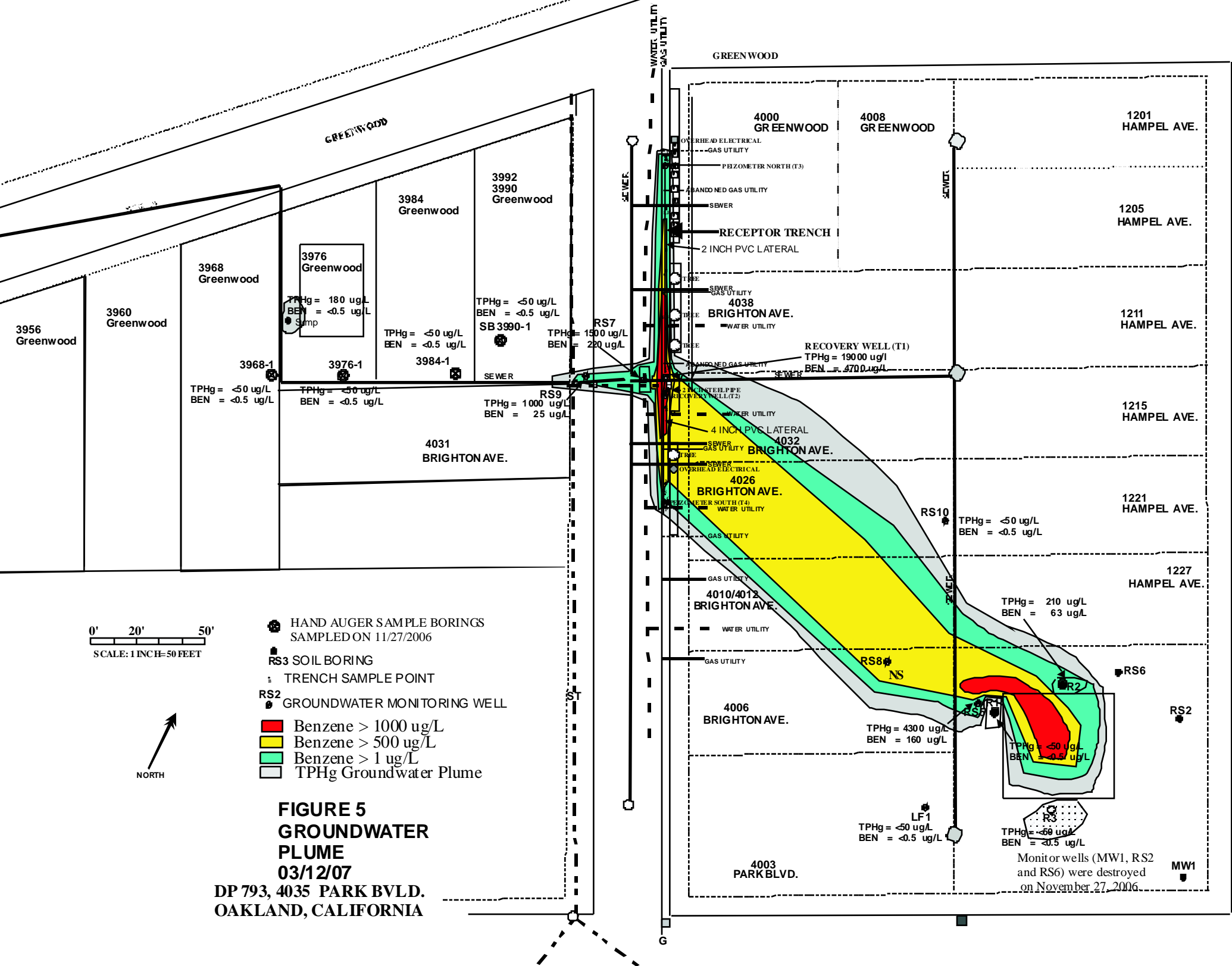
0' 20' 50'
 SCALE: 1 INCH = 50 FEET

NORTH

BRIGHTON AVENUE

PARK BLVD.

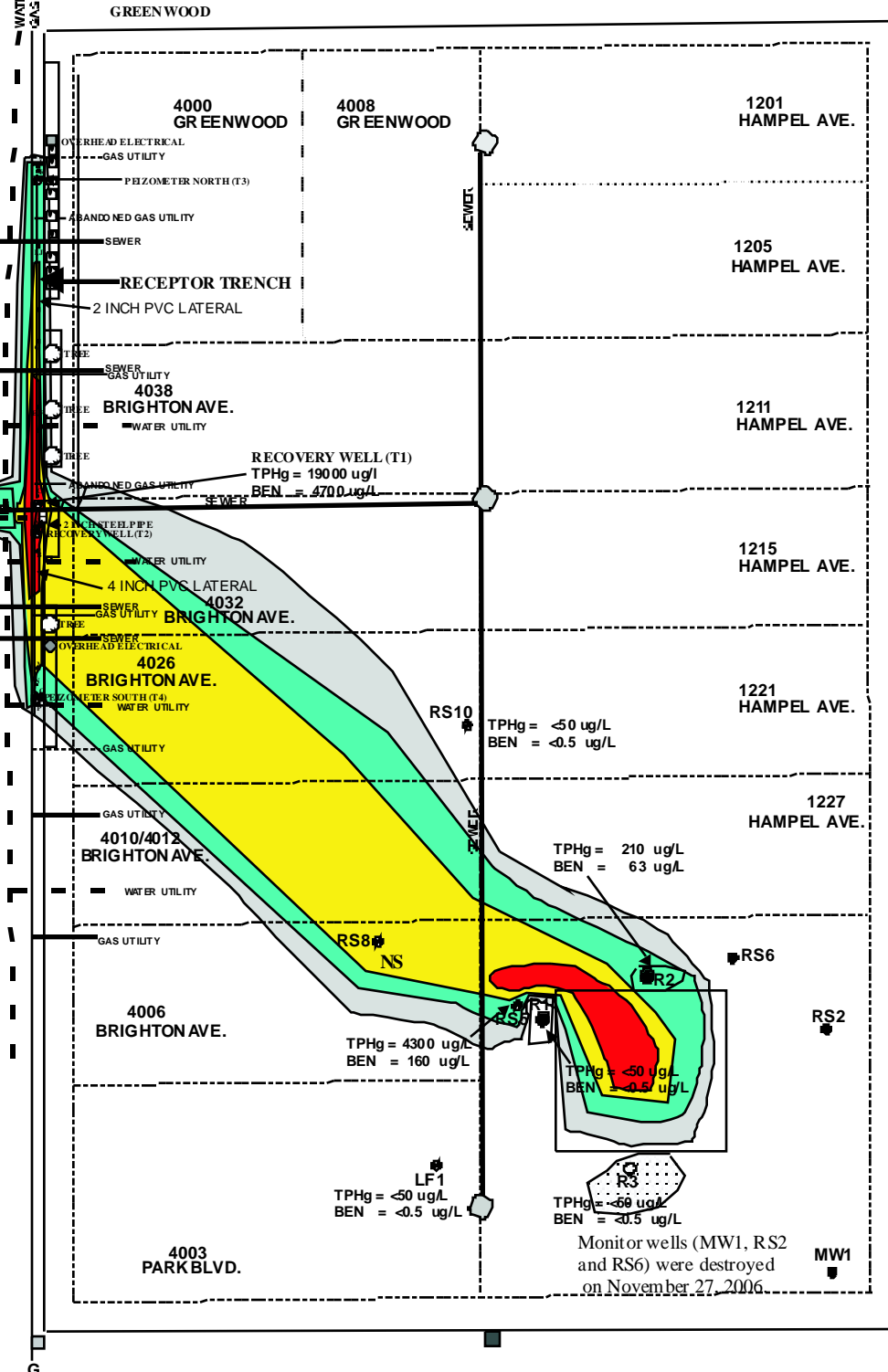
HAMPEL AVENUE

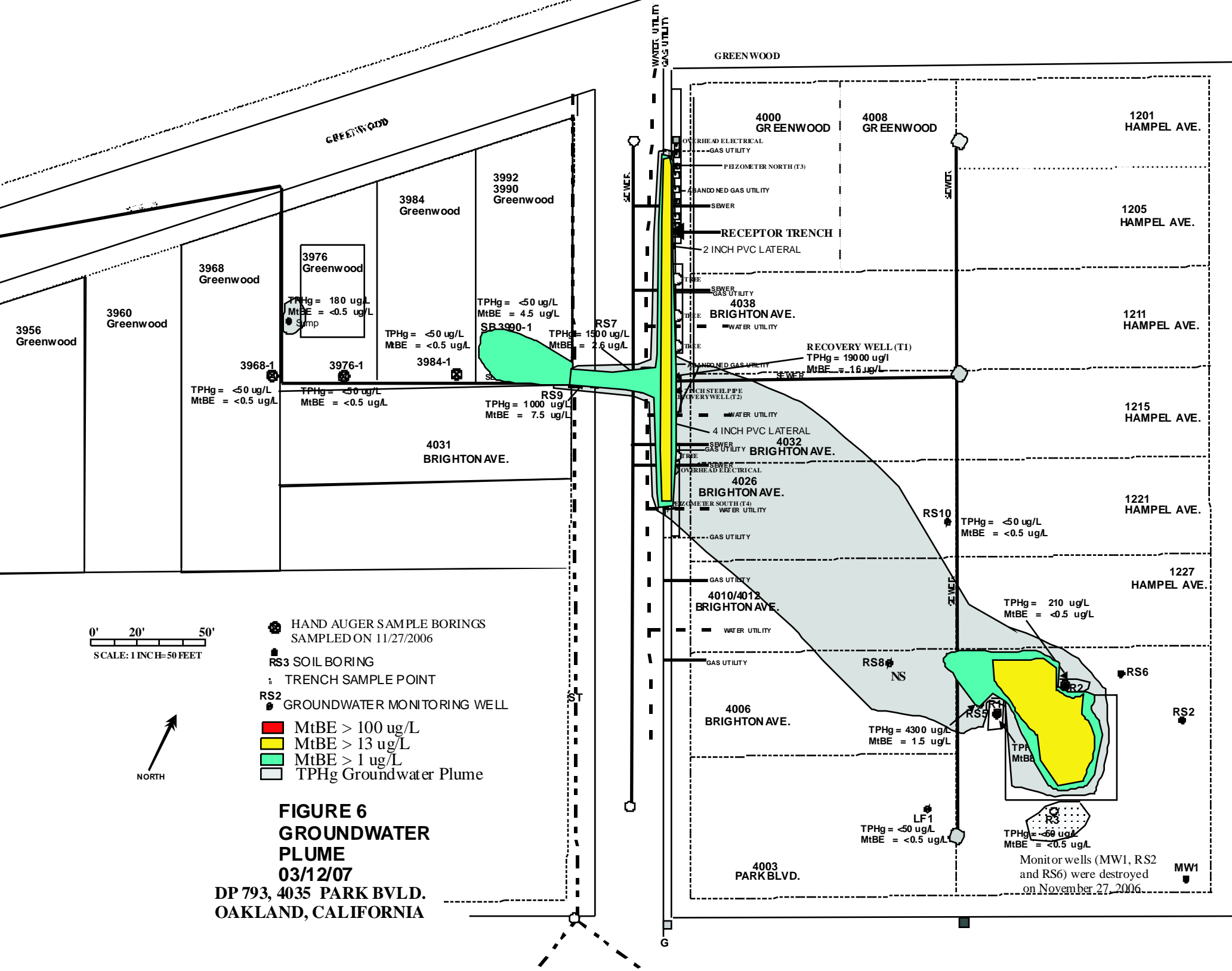


- HAND AUGER SAMPLE BORINGS SAMPLED ON 11/27/2006
- RS3 SOIL BORING
- TRENCH SAMPLE POINT
- RS2 GROUNDWATER MONITORING WELL
- Benzene > 1000 ug/L
- Benzene > 500 ug/L
- Benzene > 1 ug/L
- TPHg Groundwater Plume

**FIGURE 5
GROUNDWATER
PLUME
03/12/07
DP 793, 4035 PARK BLVD.
OAKLAND, CALIFORNIA**

0' 20' 50'
SCALE: 1 INCH=50 FEET





APPENDIX A.

METHODS AND PROCEDURES, QA/QC WITH FIELD NOTES

This Appendix documents the specific methods, procedures, and materials used to collect and analyze ground water samples.

Gauging and Measuring Monitor Wells.

Prior to sampling a well, WEGE personnel obtain two measurements: the depth to ground water and the product thickness using a battery powered depth to water-product interface probe and or by using a specially designed bailer. The probe is lowered into the well casing until the instrument signals that the top of water has been reached. The distance from the top of water to the top of casing is read from the tape calibrated in 0.01 foot intervals for accuracy to 0.01 foot, that is attached to the probe. The measured distance is subtracted from the established elevation at the top of casing to determine the elevation of ground water with respect to mean sea level.

The probe is washed with TSP and rinsed in distilled water before each measurement. WEGE has designed and built bailers that will collect a sample of the contents of a well to show the exact thickness of any floating product.

Purging Standing Water from Monitor Wells

If no product is present, WEGE personnel purge the well. This is accomplished by removing ground water from the well until the water quality parameters (temperature, pH, and conductivity) stabilize, or until the well is emptied of water. Periodic measurements of ground water temperature, pH, and conductivity were taken with a Hydac Monitor or other meter and recorded along with the volume of ground water removed from the well. Purging is done by one or more methods singularly or in combination. Bailers, pneumatic or electric sample pumps, or vacuum pump tanks or trucks may be used. The usual amount of water removed is three well volumes. The water collected during purging is either safely stored onsite for later disposition, transported to an approved onsite or offsite sewer discharge system, or an approved onsite or offsite treatment system.

Collection of Water Sample for Analysis

The well is allowed to recover after purging and a ground water sample is collected. A fresh bailer is used to collect enough water for the requirements of the laboratory for the analyses needed or required. The water samples are decanted from the bailer into the appropriate number and size containers. These containers are furnished pre-cleaned to exact EPA protocols, with and without preservatives added, by the analytical laboratory or a chemical supply company. The bottles are filled, with no headspace, and then capped with plastic caps with teflon liners.

The vials or bottles containing the ground water samples are labeled with site name, station, date, time, sampler, and analyses to be performed, and documented on a chain of custody form. They were placed in ziplock bags and stored in a chest cooled to 4^oC with ice. The preserved samples are chain of custody delivered to the chosen laboratory.

Analytical Results

TPH is the abbreviations used for Total Petroleum Hydrocarbons used by the laboratories for water and soil analyses. The letter following TPH indicates a particular distinction or grouping for the results. The letters "g", "d", "k", or "o" indicates gasoline, diesel, kerosene, or oil, respectively, ie. TPH-d for diesel range TPH.

BTEX or MTBE are acronyms or abbreviations used for Benzene, Toluene, Ethylbenzene and all of the Xylenes (BTEX) and Methyl Tertiary Butyl Ether (MTBE), respectively.

MBTEX is the designation for the combination of the above five compounds.

The less than symbol, <, used with a "parts per value" indicates the lower detection limit for a given analytical result and the level, if present, of that particular analyte is below or less than that lower detection limit.

Other abbreviations commonly used are ppm, ppb, mg/Kg, ug/Kg, ml/l and ul/l are parts per million, parts per billion, milligrams per kilogram, micrograms per kilogram, milliliters per liter, microliters per liter, respectively.

Chain of Custody Documentation

All water samples that are collected by WEGE and transported to a certified analytical laboratory are accompanied by chain-of-custody (COC) documentation. This documentation is used to record the movement and custody of a sample from collection in the field to final analysis and storage. Samples to be analyzed at the certified laboratory were logged on the COC sheet provided by the laboratory. The same information provided on the sample labels (site name, sample location, date, time, and analysis to be performed) is also noted on the COC form. Each person relinquishing custody of the sample set signs the COC form indicating the date and time of the transfer to the recipient. A copy of the COC follows the samples or their extracts throughout the laboratory to aid the analyst in identifying the samples and to assure analysis within holding times.

Copies of the COC documentation are included with the laboratory results in Appendix B of this report.



**WESTERN
GHO-ENGINEERS**
 CALIF. CONTRACTOR #13857
 REGISTERED GEOLOGIST S

1380 EAST STAMEN STREET
 WOODLAND, CA 95775-5000
 (530) 668-5300
 FAX (530) 662-6277
 wge@gho.com

**GROUNDWATER ELEVATION DATA
 AND PRODUCT THICKNESS MEASUREMENTS**

SITE: DP 293, 4035 Park Blvd., Oakland, CA

DATE: March 12, 2007

START TIME: 0900

MEASURED BY: George Converse

DTW METER USED: Solinst Model 122

WELL ID	Casing Elevation to Top	DEP. FROM WELL face below top of casing (ft)	DEPTH TO WATER (ft)	DEPTH TO TOP OF CLAY (ft)	Flow Class. (ft)	WATER ELEVATION IN FEET	Water Elevation
RS05	227.6	39.20	27-20		0		197.61
RS07	195.99	7.25	7.98		0		192.01
RS08	214.67	14.50	Clay				
RS10	195.63	3.50	5.08		0		192.55
RS10	208.46	9.80	2.80		0		205.66
RS01	227.69	16.8	11.76		0		215.93
RS02	227.28	15.92	12.97		0		214.31
RS03	227.25	11.74	7.45		0		219.80
RF1	225.59	38.70	31.47		0		195.12
TC1	195.11	10		Clay			192.87
TC2	193.30	10	2.24				192.06
TC3	202.38	10		Clay			
TC4	197.48	10		Clay			

NOTES: Global ID# TH000100158 Sampling Co. Log Code: WGEW



**WESTERN
GEO-ENGINEERS**
CALIF. CONTRACTOR #51987
REGISTERED GEOLOGISTS

1586 EAST BEAVER STREET
WOODLAND, CA 95776 6073
(930) 668-5300
FAX (930) 662-0273
wege@aol.com

WELL SAMPLE DATA SHEET

SITE: DP 709, 4035 PARK BLVD., OAKLAND, CA.
DATE: March 12, 2007 START TIME: 11:05
WELL ID#: RS07 SAMPLE BY: CONVERSE
CASING ELEVATION, IN FEET: 195.99 WATER COLUMN, IN FEET: 3.27
CASING TOTAL DEPTH, IN FEET: 7.25 GIL PURGE ONE CASING VOLUME: 9.163
CASING DIAMETER, IN INCHES: 4" (CASING MULTIPLIERS: 2 INCH = 0.165 gal/ft
DEPTH TO TOP OF FLUID: 3.98 2" = 0.625 L/FT 4 INCH = 0.55 gal/ft
1" = 2.46 L/FT 6 INCH = 1.17 gal/ft
DEPTH TO TOP OF WATER: 3.28 FT WATER: 748 GALLONS (CYBES LITERS)(L)
TOP OF WATER ELEVATION: _____ FREE PHASE PRODUCT THICKNESS: _____
PUMP TYPE: hand ball PUMP RATE: _____
DTW METER USED: SOLINST MODEL 123 PH, Cond, Temp meter used: HANNA HI 99130

2 8
3.27
6
16
1962
2) 255

TIME	INTAKE (INCH)	RATE (GPM)	COV. VOL. (GAL)	TEMP (°C)	PH (mV)	Specific Electrical Conductance (µS/cm)	Total Dissolved Solids (ppm)	Dissolved Oxygen (mg/L)	Remarks (color, odor, etc.)
11:02			1.0	15.8	6.70	198	379		clear
11:13			2.5	15.3	6.89	637	318		
11:16			3.5	15.0	6.85	605	302		
11:19			4.5	15.1	6.86	611	304		

PH = 4.05

FINAL VOLUME PURGED: 9.5 ANALYSIS INCLUDES: 2260B TPH, BTEX, MIBK
TIME SAMPLED: 11:28 SAMPLE CONTAINERS: 2-HCl PRESERVED
SAMPLE ID#: RS07 LABORATORY USE: KIEF Analytical
NOTES: _____



WESTERN
GEO-ENGINEERS
CALIF. CONTRACTOR #513637
REGISTERED GEOLOGISTS

1286 EAST BEAMER STREET
WOODLAND, CA 95776-6003
(530) 668-5500
FAX (530) 562-0273
wge@cal.net

WELL SAMPLE DATA SHEET

SITE # W-29A, 403E PARK BLVD., OAKLAND, CA.

DATE March 12, 2007

START TIME

WELL ID# W-29A/308

SAMPLE BY CONVERSE

CASING ELEVATION, IN FEET 195.63

WATER COLUMN, IN FEET

CASING TOTAL DEPTH, IN FEET 230.14

GAL PURGE ONE CASING VOLUME

CASING DIAMETER IN INCHES 3"

(CASING MULTIPLIERS: 2 INCH = 0.154 g/FT

DEPTH TO TOP OF FLUID

2" = 0.625 G/FT

4 INCH = 0.65 G/FT

4" = 2.48 G/FT

6 INCH = 1.47 G/FT

FT³ WATER 7.48 GALLONS (G) 28.3 LITERS (L)

DEPTH TO TOP OF WATER

FREE PHASE PRODUCT THICKNESS

TOP OF WATER ELEVATION

PUMP RATE

PUMP TYPE DISPOSABLE BAITER

DTW WATER USED SOLINST MODEL 122

pH, Cond, Temp meter used HANNA HI 99130

INCH	IN TAK-DEPTH	RATE OF FLOW LPM	CUM VOLUME GAL LITERS	TEMP (F)	pH (units)	Specific Electrical Conductance (uS/cm)	Total Dissolved Solids (ppm)	Chlorides (mg/L)	Remarks (color, odor, etc.)

FINAL VOLUME PURGED

ANALYSIS INCLUDES: RD60B TDRg, DTFX, MIBS

TIME SAMPLED

SAMPLE CONTAINERS 3-ICE PRESERVED

SAMPLE ID# W-29A 308

ACCYDA'S

LABORATORY USED: KIFT Analytical

NOTES



**WESTERN
GEO-ENGINEERS**
CALIF. CONTRACTOR #A513837
REGISTERED GEOLOGISTS

1186 EAST BEAMER BLVD #17
WOODBRIDGE, CA 97766-0700
(530) 668-5300
FAX (530) 662-1271
www.avege.com

WELL SAMPLE DATA SHEET

ST# DP 295, 4035 PARK BLVD., OAKLAND, CA.
DATE March 12, 2007 START TIME 8:50
WELL ID# R510 SAMPLE BY CONVERSE
CASING ELEVATION IN FEET 208.46 WATER COLUMN IN FEET 2.0
CASING TOTAL DEPTH IN FEET 9.8 GAL PURGE ONE CASING VOLUME 1.15
CASING DIAMETER IN INCHES 2" (CASING MULTI PLIERS: 2 INCH = 0.165 gal/ft
2" = 0.625 L/FT 4 INCH = 0.65 gal/ft
4" = 2.45 L/FT 6 INCH = 1.47 gal/ft)
DEPTH TO TOP OF FLUID 2.80 FT³ WATER 7.48 GALLONS (28.24 LITERS)
DEPTH TO TOP OF WATER 2.50 FREE PHASE PRODUCT THICKNESS _____
TOP OF WATER ELEVATION _____ PUMP RATE _____
PUMP TYPE DISPOSABLE BAILER PUMP RATE _____
D/W METER USED SOLINST MODEL 122 PH, Cond, Temp meter used HANNA HI 99130

TIME	INTAKE DEPTH	RATE GPM/LPM	CUM. VOL GAL/LITERS	TEMP (C)	pH (static)	Specific Electrical Conductance (µS/cm)	Total Dissolved Solids (ppm)	Dissolved Oxygen (mg/L)	Remarks (col, dir, etc.)
9:00	9.0		1.0	14.8	5.99	255	127		Clear to pump
10:00			1.5	14.5	6.05	290	125		Traced to 9:45 no change
10:05	7.0		2.75	14.5	6.05	249	124		
10:10			3.2	14.6	6.09	240	124		
									DTC = 6.10

FINAL VOLUME PURGED 3.75
TIME SAMPLED 10:10
SAMPLE ID# R510
NOTES _____

ANALYSIS INCLUDES: 8200B TPHe, DTEX, MIBE
SAMPLE CONTAINERS 3-HCL PRESERVED
10CC VOALS
LABORATORY USED KIEF Analytical

11 35



**WESTERN
GEO-ENGINEERS**
CALIF. CONTRACTOR 4513877
REGISTERED GEOLOGISTS

1385 EAST BEAMER STREET
WOODLAND CA 95775-6002
(530) 663-5300
FAX (530) 662-0271
www.avege.com

WELL SAMPLE DATA SHEET

SITE: DP 703 4035 PARK BLVD., OAKLAND, CA.

DATE: March 12, 2002 START TIME: _____

WELL ID# R1 SAMPLE BY CONVERSE

CASING ELEVATION IN FEET 227.69 WATER COLUMN IN FEET 5.04
 CASING TOTAL DEPTH IN FEET 16.80 GAL PURGE ONE CASING VOLUME 7.35 gal
 CASING DIAMETER IN INCHES 4" (CASING MULTIPLIERS: 2 INCH = 0.65 gal/FT
 4" = 2.46 gal/FT 4 INCH = 0.65 gal/FT
 6" = 3.56 gal/FT 6 INCH = 1.47 gal/FT)
 DEPTH TO TOP OF FLUID 11.76 FT³ WATER 5.44 GALLONS (20.6 LITERS)

DEPTH TO TOP OF WATER 11.76 PUMP TYPE Hand Bail
 TOP OF WATER ELEVATION _____ PUMP RATE _____
 DTW METER USED SOLENEC MODEL 122 ALL Cond. Temp meter used HANNA HI 9913D

TIME	INITIAL DEPTH	RATE GPM/LPM	CUM. VOL. GAL./LITERS	TEMP °C	Oil units	Specific Electrical Conductivity (µS/cm)	Total Dissolved Solids (ppm)	Residual Oxygen (mg/L)	Remarks (e.g. no oil)
1316			1.8	18.1	6.74	241	205		no oil
1405			5.0	17.7	6.67	396	178		}
1412			10.0	17.5	6.68	396	187		
<i>DTW = 11.76</i>									

FINAL VOLUME PURGED 10.2 gal
 TIME SAMPLED 1415
 SAMPLE ID# R1
 NOTES _____

ANALYSIS INCLUDES: 8260B TPH, BTEX, MtBE
 SAMPLE CONTAINERS 3-HCl PRESERVED
HCC VOA'S
 LABORATORY USED KIPP Analytical

1.47
7.35



**WESTERN
GEO-ENGINEERS**
CALIF. CONTRACTOR #513817
REGISTERED GEOLOGISTS

1280 EAST BEAMER STREET
WILMINGTON, CA 95790-0014
(930) 668-5300
FAX (930) 668-0277
wece@cal.net

2
4.3
1.47
50.1
1.12
5.7
57.81

WELL SAMPLE DATA SHEET

SITE: DE 703, 4025 PARK BLVD., OAKLAND, CA.
 DATE: March 12, 2007 START TIME: 12:50
 WELL ID# R3 SAMPLE BY: CONVERSE
 CASING ELEVATION, IN FEET 121.24 WATER COLUMN, IN FEET 4.29
 CASING TOTAL DEPTH, IN FEET 11.74 G/L PURGE ONR CASING VOLUME 0.338
 CASING DIAMETER IN INCHES 6" (CASING MULTIPLIERS: 2 INCH = 0.65 g/L FT
 4" = 2.60 L/FT 4 INCH = 0.65 g/L FT
 6" = 3.56 L/FT 6 INCH = 1.47 g/L FT)
 DEPTH TO TOP OF FLUID 7.45 FL³ WATER 7.48 GALLONS (28.3 LITERS/L)
 DEPTH TO TOP OF WATER 7.45 FREE PHASE PRODUCT THICKNESS _____
 TOP OF WATER ELEVATION _____ PUMP RATE _____
 PUMP TYPE Hand Bail
 DTW METER USED SOLINST MODEL 122 pH, Cond, Temp meter used HIANNA HI 99130

TIME	IN AKE DEPTH	RATE GFLW L/HR	CUM. VOL. GAL. LITERS	TEMP (C)	FI (units)	Viscosity (cP)	Total Dissolved Solids (PPM)	Dissolved Oxygen (mg/L)	Remarks (color, odor, etc.)
12:55			1.06	20.0	6.91	827	142		Clear
13:05			4	17.7	7.10	877	1439		{
13:12			8	17.5	7.15	878	439		}
13:18			12	17.6	7.14	882	440		
									DW = 7.78 ft

FINAL VOLUME PURGED 13.5 gfl ANALYSIS INCLUDES: 8260B TPHc, BTEX, M&B
 TIME SAMPLED 13:20 SAMPLE CONTAINERS J-101 PRESERVED
 SAMPLE ID# R3 40CC VOAS
 NOTES _____ LABORATORY USED KIT Analytical



**WESTERN
GEO-ENGINEERS**
CALL CONTRACTOR #513857
REGISTERED GEOLOGISTS

1386 EAST BLANCK STREET
WOODLAND CA 95776-9007
(530) 663-5300
FAX (530) 663-0273
weg@geol.net

WELL SAMPLE DATA SHEET

SITE: DP 793, 1035 PARK BLVD., OAKLAND, CA
 DATE: March 12, 2007 START TIME: 11:45
 WELL ID# RECEPTOR TRENCH #1, #2, #3, #4 SAMPLE BY: CONVERSE
 CASING ELEVATION, IN FEET: 12-105.30 WATER COLUMN, IN FEET: 2.76
 CASING TOTAL DEPTH, IN FEET: 10 GAL. PURGE ONE CASING VOLUME: 2.0
 CASING DIAMETER IN INCHES: 4" CASING MULTI-PURGES: 2 INCH = 0.165 G/FT
 DEPTH TO TOP OF FILLID: 2.24 2" = 0.625 L/FT 4 INCH = 0.65 G/FT
 4" = 2.46 L/FT 6 INCH = 1.47 G/FT
 DEPTH TO TOP OF WATER: 2.24 FT³ WATER: 7.48 GALLONS (C) 28.3 LITERS (L)
 TOP OF WATER ELEVATION: _____ FREE PHASE PRODUCT THICKNESS: _____
 PUMP TYPE: Hand Bail PUMP RATE: _____
 DTW METER USED: SOLINST MODEL 122 pH, Cond, Temp meter used: HANNA HI 99130

2850
103
4626
50445

TIME	INTAKE DEPTH	RATE GPM/LPM	TIME VOL GAL.	TEMP (°C)	pH	Spec. Cond. Electrical Conductance (µS/cm)	Total Dissolved Solids (TDS)	Dissolved Oxygen (mg/L)	Remarks (color, odor, etc.)
1145			0.25	18.5	6.75	976	470		clear
1150			3.0	17.5	6.71	962	490		}
1153			5.0	17.3	6.51	971	485		
1157			7.5	17.0	6.37	954	477		
1200			10.0	17.0	6.33	943	471		
1203			12.5	16.9	6.32	949	471		
1206			15.0	17.0	6.34	947	473		

7745 2.30

FINAL VOLUME PURGED: 15.125
 TIME SAMPLED: 1208
 SAMPLE ID# T1
 NOTES: _____

ANALYSIS INCLUDES: 3608 TPL, FLEX, NHF.
 SAMPLE CONTAINERS: 3-HCl PRESERVED
40CC VOA'S
 LABORATORY USED: KIEE Analytical



**WESTERN
GEO-ENGINEERS**
CALIF. CONTRACTOR #513857
REGISTERED GEOLOGISTS

1385 EAST BEAVER STREET
WOODLAND, CA 95775-6005
(530) 668-5300
FAX (530) 662-0370
www.wgeocal.com

WELL SAMPLE DATA SHEET

SITE: DP 703, 4035 PARK BLVD., OAKLAND, CA

DATE March 12, 2007 START TIME 0856
WELL ID# L8-01 SAMPLE BY CONVERSE
CASING ELEVATION, IN FEET 226.50 WATER COLUMN, IN FEET 7.23
CASING TOTAL DEPTH, IN FEET 38.70 GAL. PURGE ONE CASING VOLUME 1.19 gal
CASING DIAMETER IN INCHES 2" (CASING MULTIPLIERS: 2 INCH = 0.165 gal/FT
2" = 0.625 L/FT 4 INCH = 0.65 gal/FT
4" = 2.16 L/FT 5 INCH = 1.47 gal/FT)
DEPTH TO TOP OF FLUID 31.47 FT³ WATER 7.48 GALLONS (Q) 28.3 LITERS (L)
DEPTH TO TOP OF WATER 31.47 FREE PHASE PRODUCT THICKNESS _____
TOP OF WATER ELEVATION 195.03 PUMP RATE _____
PUMP TYPE Hand Bail
DTW METER USED SOLINST MODEL 122 pH Cond. Temperature used HANNA HI 99150

38.70
31.47
7.23
465
3615
11738
723
1192.93

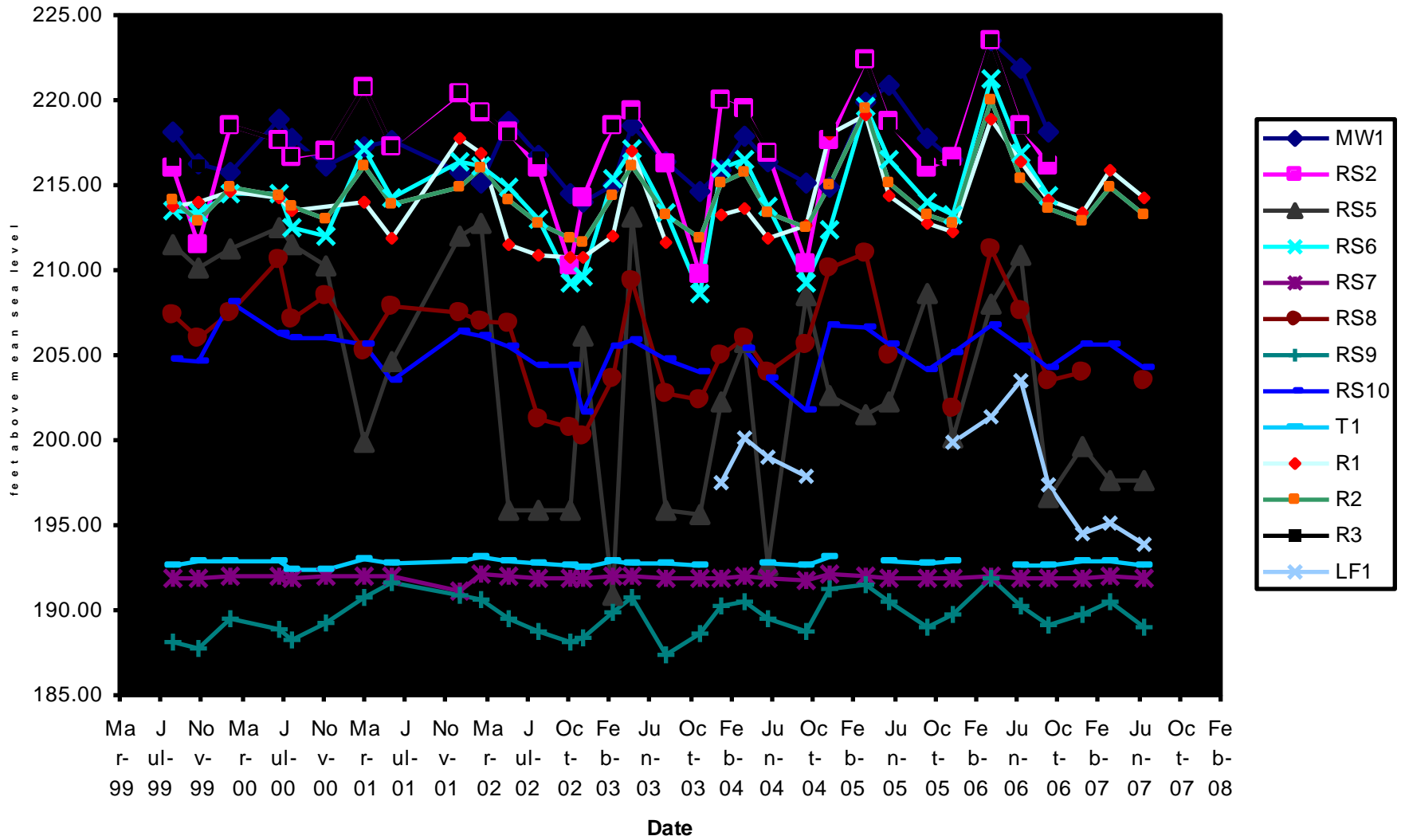
TIME	INTAKE DEPTH	RATE GPM	CUM. VOL. GAL. LITERS	TEMP (C)	pH	Cond. (µmhos/cm)	Temp. (F)	Remarks (pH, color, etc.)
0908	32		1.82g	19.8	6.52	504	291	white 10 min no color
0918	33		1.0	19.3	6.55	504	252	white 10 min no color
0922	36		2.5	19.0	6.56	512	257	}
0927	36		3.0	19.1	6.58	516	256	
DTW = 31.90								

FINAL VOLUME PURGED 3:25 ANALYSIS INCLUDES: SZ608 TPH, BTEX, MIBK
TIME SAMPLED: 0930 SAMPLE CONTAINERS 3-HCI PRESERVED
SAMPLE ID# L8-01 ABC VOA'S
LABORATORY USED KIT Analytical

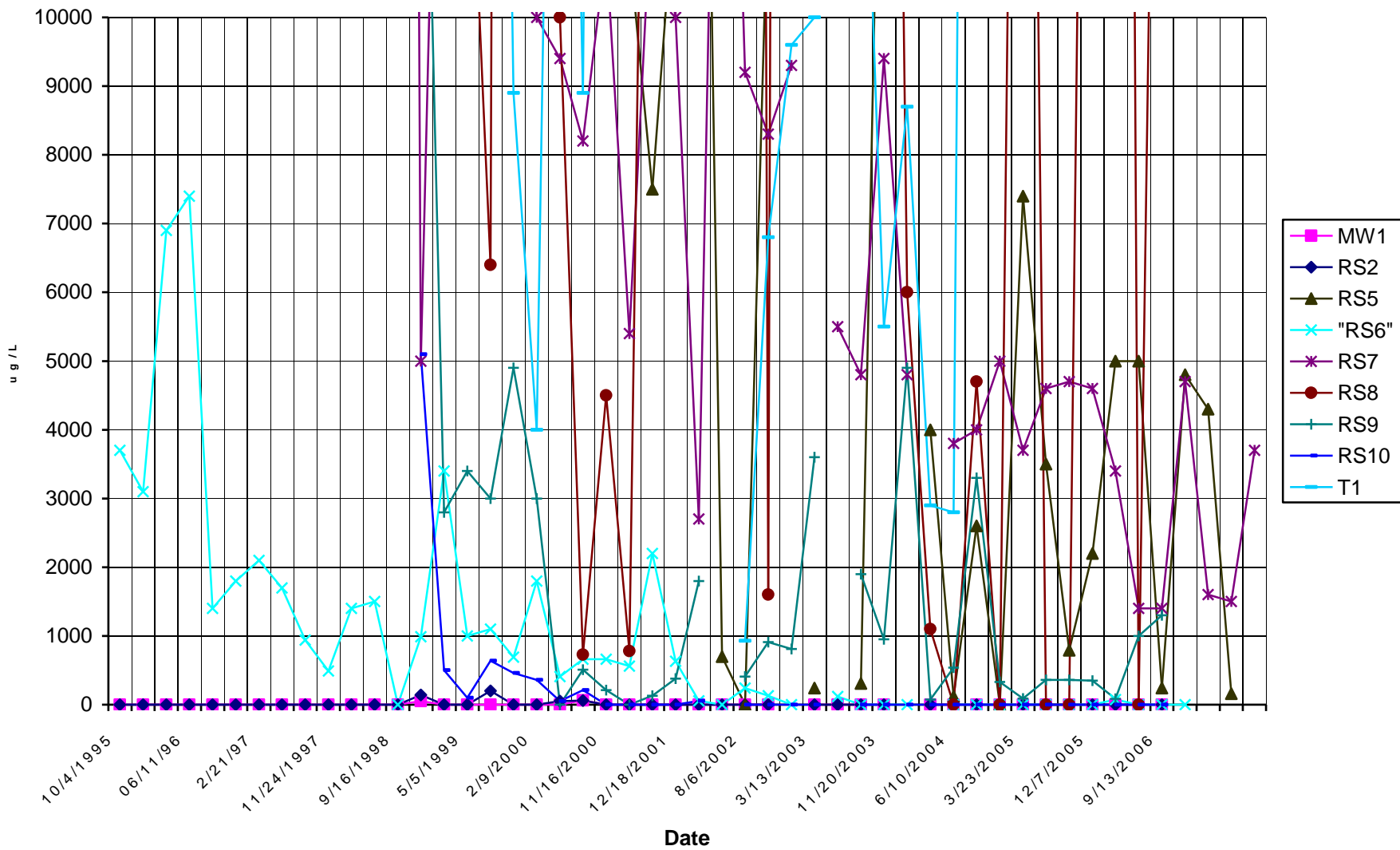
NOTES sample taken from 10 min. after well is shut in 10 min.

APPENDIX B.
GROUNDWATER ELEVATION CHART
TPHg & MtBE IN WELLS CHARTS

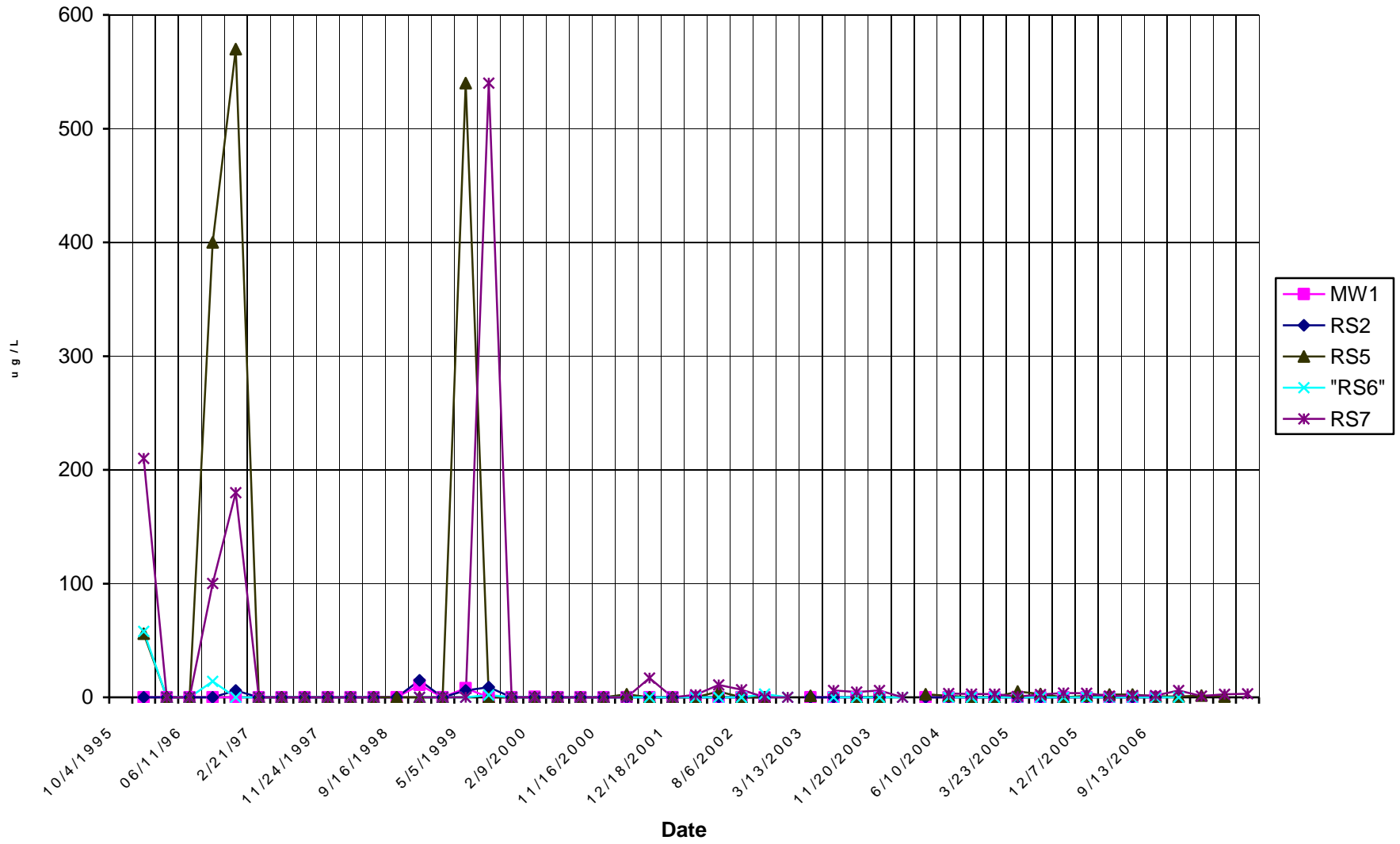
Groundwater Elevation



TPHg IN WELLS



MTBE IN WELLS



APPENDIX C.
LABORATORY REPORTS



Report Number : 55317

Date : 3/16/2007

George Converse
Western Geo-Engineers
1386 East Beamer Street
Woodland, CA 95776

Subject : 9 Water Samples
Project Name : DP793 1st 1/4 2007
Project Number : DP793

Dear Mr. Converse,

Chemical analysis of the samples referenced above has been completed. Summaries of the data are contained on the following pages. Sample(s) were received under documented chain-of-custody. US EPA protocols for sample storage and preservation were followed.

Kiff Analytical is certified by the State of California (# 2236). If you have any questions regarding procedures or results, please call me at 530-297-4800.

Sincerely,

A handwritten signature in black ink, appearing to read "Joel Kiff".

Joel Kiff



Report Number : 55317

Date : 3/16/2007

Project Name : **DP793 1st 1/4 2007**

Project Number : **DP793**

Sample : **RS05**

Matrix : Water

Lab Number : 55317-01

Sample Date :3/12/2007

Parameter	Measured Value	Method Reporting Limit	Units	Analysis Method	Date Analyzed
Benzene	160	0.50	ug/L	EPA 8260B	3/14/2007
Toluene	130	0.50	ug/L	EPA 8260B	3/14/2007
Ethylbenzene	110	0.50	ug/L	EPA 8260B	3/14/2007
Total Xylenes	600	1.0	ug/L	EPA 8260B	3/14/2007
Methyl-t-butyl ether (MTBE)	1.5	0.50	ug/L	EPA 8260B	3/14/2007
TPH as Gasoline	4300	100	ug/L	EPA 8260B	3/14/2007
Toluene - d8 (Surr)	85.8		% Recovery	EPA 8260B	3/14/2007
4-Bromofluorobenzene (Surr)	96.4		% Recovery	EPA 8260B	3/14/2007

Sample : **RS07**

Matrix : Water

Lab Number : 55317-02

Sample Date :3/12/2007

Parameter	Measured Value	Method Reporting Limit	Units	Analysis Method	Date Analyzed
Benzene	220	0.90	ug/L	EPA 8260B	3/13/2007
Toluene	3.7	0.90	ug/L	EPA 8260B	3/13/2007
Ethylbenzene	40	0.90	ug/L	EPA 8260B	3/13/2007
Total Xylenes	35	0.90	ug/L	EPA 8260B	3/13/2007
Methyl-t-butyl ether (MTBE)	2.6	0.90	ug/L	EPA 8260B	3/13/2007
TPH as Gasoline	1500	90	ug/L	EPA 8260B	3/13/2007
Toluene - d8 (Surr)	96.5		% Recovery	EPA 8260B	3/13/2007
4-Bromofluorobenzene (Surr)	96.7		% Recovery	EPA 8260B	3/13/2007

Approved By:

Joe Kiff



Report Number : 55317

Date : 3/16/2007

Project Name : **DP793 1st 1/4 2007**

Project Number : **DP793**

Sample : **RS09**

Matrix : Water

Lab Number : 55317-03

Sample Date :3/12/2007

Parameter	Measured Value	Method Reporting Limit	Units	Analysis Method	Date Analyzed
Benzene	25	0.50	ug/L	EPA 8260B	3/14/2007
Toluene	12	0.50	ug/L	EPA 8260B	3/14/2007
Ethylbenzene	14	0.50	ug/L	EPA 8260B	3/14/2007
Total Xylenes	40	0.50	ug/L	EPA 8260B	3/14/2007
Methyl-t-butyl ether (MTBE)	7.5	0.50	ug/L	EPA 8260B	3/14/2007
TPH as Gasoline	1000	50	ug/L	EPA 8260B	3/14/2007
Toluene - d8 (Surr)	90.7		% Recovery	EPA 8260B	3/14/2007
4-Bromofluorobenzene (Surr)	98.2		% Recovery	EPA 8260B	3/14/2007

Sample : **RS10**

Matrix : Water

Lab Number : 55317-04

Sample Date :3/12/2007

Parameter	Measured Value	Method Reporting Limit	Units	Analysis Method	Date Analyzed
Benzene	< 0.50	0.50	ug/L	EPA 8260B	3/14/2007
Toluene	< 0.50	0.50	ug/L	EPA 8260B	3/14/2007
Ethylbenzene	< 0.50	0.50	ug/L	EPA 8260B	3/14/2007
Total Xylenes	< 0.50	0.50	ug/L	EPA 8260B	3/14/2007
Methyl-t-butyl ether (MTBE)	< 0.50	0.50	ug/L	EPA 8260B	3/14/2007
TPH as Gasoline	< 50	50	ug/L	EPA 8260B	3/14/2007
Toluene - d8 (Surr)	85.7		% Recovery	EPA 8260B	3/14/2007
4-Bromofluorobenzene (Surr)	96.2		% Recovery	EPA 8260B	3/14/2007

Approved By:

Joe Kiff



Report Number : 55317

Date : 3/16/2007

Project Name : **DP793 1st 1/4 2007**

Project Number : **DP793**

Sample : **R1**

Matrix : Water

Lab Number : 55317-05

Sample Date :3/12/2007

Parameter	Measured Value	Method Reporting Limit	Units	Analysis Method	Date Analyzed
Benzene	< 0.50	0.50	ug/L	EPA 8260B	3/14/2007
Toluene	< 0.50	0.50	ug/L	EPA 8260B	3/14/2007
Ethylbenzene	< 0.50	0.50	ug/L	EPA 8260B	3/14/2007
Total Xylenes	< 0.50	0.50	ug/L	EPA 8260B	3/14/2007
Methyl-t-butyl ether (MTBE)	< 0.50	0.50	ug/L	EPA 8260B	3/14/2007
TPH as Gasoline	< 50	50	ug/L	EPA 8260B	3/14/2007
Toluene - d8 (Surr)	86.4		% Recovery	EPA 8260B	3/14/2007
4-Bromofluorobenzene (Surr)	94.9		% Recovery	EPA 8260B	3/14/2007

Sample : **R2**

Matrix : Water

Lab Number : 55317-06

Sample Date :3/12/2007

Parameter	Measured Value	Method Reporting Limit	Units	Analysis Method	Date Analyzed
Benzene	63	0.50	ug/L	EPA 8260B	3/14/2007
Toluene	< 0.50	0.50	ug/L	EPA 8260B	3/14/2007
Ethylbenzene	1.8	0.50	ug/L	EPA 8260B	3/14/2007
Total Xylenes	< 0.50	0.50	ug/L	EPA 8260B	3/14/2007
Methyl-t-butyl ether (MTBE)	< 0.50	0.50	ug/L	EPA 8260B	3/14/2007
TPH as Gasoline	210	50	ug/L	EPA 8260B	3/14/2007
Toluene - d8 (Surr)	85.2		% Recovery	EPA 8260B	3/14/2007
4-Bromofluorobenzene (Surr)	97.6		% Recovery	EPA 8260B	3/14/2007

Approved By:

Joe Kiff



Report Number : 55317

Date : 3/16/2007

Project Name : **DP793 1st 1/4 2007**

Project Number : **DP793**

Sample : **R3**

Matrix : Water

Lab Number : 55317-07

Sample Date :3/12/2007

Parameter	Measured Value	Method Reporting Limit	Units	Analysis Method	Date Analyzed
Benzene	< 0.50	0.50	ug/L	EPA 8260B	3/14/2007
Toluene	< 0.50	0.50	ug/L	EPA 8260B	3/14/2007
Ethylbenzene	< 0.50	0.50	ug/L	EPA 8260B	3/14/2007
Total Xylenes	< 0.50	0.50	ug/L	EPA 8260B	3/14/2007
Methyl-t-butyl ether (MTBE)	< 0.50	0.50	ug/L	EPA 8260B	3/14/2007
TPH as Gasoline	< 50	50	ug/L	EPA 8260B	3/14/2007
Toluene - d8 (Surr)	87.1		% Recovery	EPA 8260B	3/14/2007
4-Bromofluorobenzene (Surr)	94.8		% Recovery	EPA 8260B	3/14/2007

Sample : **T1**

Matrix : Water

Lab Number : 55317-08

Sample Date :3/12/2007

Parameter	Measured Value	Method Reporting Limit	Units	Analysis Method	Date Analyzed
Benzene	4700	9.0	ug/L	EPA 8260B	3/13/2007
Toluene	750	9.0	ug/L	EPA 8260B	3/13/2007
Ethylbenzene	870	9.0	ug/L	EPA 8260B	3/13/2007
Total Xylenes	2300	9.0	ug/L	EPA 8260B	3/13/2007
Methyl-t-butyl ether (MTBE)	16	9.0	ug/L	EPA 8260B	3/13/2007
TPH as Gasoline	19000	900	ug/L	EPA 8260B	3/13/2007
Toluene - d8 (Surr)	96.8		% Recovery	EPA 8260B	3/13/2007
4-Bromofluorobenzene (Surr)	98.2		% Recovery	EPA 8260B	3/13/2007

Approved By:

Joe Kiff



Report Number : 55317

Date : 3/16/2007

Project Name : **DP793 1st 1/4 2007**

Project Number : **DP793**

Sample : **LF1**

Matrix : Water

Lab Number : 55317-09

Sample Date :3/12/2007

Parameter	Measured Value	Method Reporting Limit	Units	Analysis Method	Date Analyzed
Benzene	< 0.50	0.50	ug/L	EPA 8260B	3/14/2007
Toluene	< 0.50	0.50	ug/L	EPA 8260B	3/14/2007
Ethylbenzene	< 0.50	0.50	ug/L	EPA 8260B	3/14/2007
Total Xylenes	< 0.50	0.50	ug/L	EPA 8260B	3/14/2007
Methyl-t-butyl ether (MTBE)	< 0.50	0.50	ug/L	EPA 8260B	3/14/2007
TPH as Gasoline	< 50	50	ug/L	EPA 8260B	3/14/2007
Toluene - d8 (Surr)	87.9		% Recovery	EPA 8260B	3/14/2007
4-Bromofluorobenzene (Surr)	95.3		% Recovery	EPA 8260B	3/14/2007

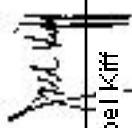
Approved By:

Joe Kiff

Report Number : 56317
 Date : 3/16/2007

QC Report : Method Blank Data
 Project Name : DP793 1st 1/4 2007
 Project Number : DP793

Parameter	Measured Value	Method Reporting Limit	Units	Analyst Method	Date Analyzed
Benzene		0.50	ug/L	EPA 8260B	3/13/2007
Toluene		0.50	ug/L	EPA 8260B	3/13/2007
Ethylbenzene		0.50	ug/L	EPA 8260B	3/13/2007
Total Xylenes		0.50	ug/L	EPA 8260B	3/13/2007
Methyl-Hydrocarbon (MTHC)		0.50	ug/L	EPA 8260B	3/13/2007
TPH as Gasoline		50	ug/L	EPA 8260B	3/13/2007
Toluene - d8 (Sum)			%	EPA 8260B	3/13/2007
p-Bromobenzene (Sum)			%	EPA 8260B	3/13/2007
Total Xylenes		0.50	ug/L	EPA 8260B	3/14/2007
TPH as Gasoline		50	ug/L	EPA 8260B	3/14/2007
Benzene		0.50	ug/L	EPA 8260B	3/13/2007
Toluene		0.50	ug/L	EPA 8260B	3/13/2007
Ethylbenzene		0.50	ug/L	EPA 8260B	3/13/2007
Total Xylenes		0.50	ug/L	EPA 8260B	3/13/2007
Methyl-Hydrocarbon (MTHC)		0.50	ug/L	EPA 8260B	3/13/2007
TPH as Gasoline		50	ug/L	EPA 8260B	3/13/2007
Toluene - d8 (Sum)			%	EPA 8260B	3/13/2007
p-Bromobenzene (Sum)			%	EPA 8260B	3/13/2007

Approved By:  Joel Kiff

KIFF ANALYTICAL, LLC
 2795 2nd Street, Suite 300 Davis, CA 95618 530-297-4800

Report Number : 56317

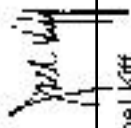
Date : 3/16/2007

QC Report : Matrix Spiked Matrix Spike Duplicate

Project Name : DP793 1st 1/4 2007

Project Number : DP793

Parameter	Spiked Sample	Sample value	Spike Level	Spike Dup. Level	Spiked Sample Value	Duplicate Spiked Sample Value	Units	Analysis Method	Date Analyzed	Spiked Sample		Duplicate Spiked Sample		Relative Percent Diff. Limit	
										Percent Recov.	Limit	Percent Recov.	Limit	Relative Percent Diff.	Limit
Benzene	<0.50	40.0	39.8	41.6	40.7	104	102	1.71	70-130	25	104	102	1.71	70-130	25
Toluene	<0.50	40.0	39.8	42.5	41.7	106	105	1.40	70-130	25	106	105	1.40	70-130	25
Tert-Butanol	<5.0	200	199	204	210	102	106	3.64	70-130	25	102	106	3.64	70-130	25
Methyl-t Butyl Ether	<0.50	40.0	39.8	33.6	34.8	84.1	87.2	3.70	70-130	25	84.1	87.2	3.70	70-130	25
Benzene	6.6	39.8	39.8	48.2	48.0	104	104	0.363	70-130	25	104	104	0.363	70-130	25
Toluene	56	39.8	39.8	90.9	93.7	87.7	94.9	7.92	70-130	25	87.7	94.9	7.92	70-130	25
Tert-Butanol	6.3	199	199	203	204	98.9	99.5	0.618	70-130	25	98.9	99.5	0.618	70-130	25
Methyl-t Butyl Ether	4.0	39.8	39.8	48.5	43.7	112	99.8	11.2	70-130	25	112	99.8	11.2	70-130	25
Benzene	<0.50	40.0	40.0	40.8	40.0	102	100	1.91	70-130	25	102	100	1.91	70-130	25
Toluene	<0.50	40.0	40.0	36.0	34.8	90.1	87.0	3.46	70-130	25	90.1	87.0	3.46	70-130	25
Tert-Butanol	<5.0	200	200	202	213	101	106	5.20	70-130	25	101	106	5.20	70-130	25
Methyl-t Butyl Ether	<0.50	40.0	40.0	45.2	45.2	113	113	0.136	70-130	25	113	113	0.136	70-130	25



Approved By: Joel Kiff

KIFF ANALYTICAL, LLC

2795 2nd Street, Suite 300 Davis, CA 95618 530-297-4800

Report Number : 56317


Date : 3/16/2007

QC Report : Laboratory Control Sample (LCS)

Project Name : **DP793 1st 1/4 2007**

Project Number : **DP793**

Parameter	Spike Level	Units	Analysis Method	Date Analyzed	LCS Percent Recov.	LCS Percent Recov. Limit
Benzene	40.0	✓			104	70-130
Toluene	40.0	✓			106	70-130
Tert-Butanol	200	✓			101	70-130
Methyl-t Butyl Ether	40.0	✓			80.7	70-130
Benzene	40.0	✓			110	70-130
Toluene	40.0	✓			106	70-130
Tert-Butanol	200	✓			101	70-130
Methyl-t Butyl Ether	40.0	✓			112	70-130
Benzene	40.0	✓			97.0	70-130
Toluene	40.0	✓			85.4	70-130
Tert-Butanol	200	✓			95.4	70-130
Methyl-t Butyl Ether	40.0	✓			105	70-130


Joel Kiff

Approved By:

KIFF ANALYTICAL, LLC

2795 2nd Street, Suite 300 Davis, CA 95618 530-297-4800



2785 2nd Street, Suite 300
 Davis, CA 95616
 Lab 530.297.4800
 Fax 530.297.4802

SRG # / Lab No. 5537

Page 1 of 1

Project Contact (Hardcopy or PDF To): Chloroform
 Company Address: 1386 E. Panama St, Colton, CA 95711
 Phone #: 530 668 5700 Fax #: 530 668 5700
 Project #: DP747 P.O. #: 1386 Panama St
 Project Name: DP747 1st 4/2007
 Project Address: Colton

California EDF Report? Yes No
 Sampling Company Log Code:
 Global ID:
 EDF Deliverable To (Email Address):
 Sampler Signatures: [Signature]

Sample Designation	Sampling		Container				Preservative				Matrix			
	Date	Time	Shave	Glass	Tedlar	HCl	HNO3	None	Ice	Water	Soil	Air		
RS 05	7/24/07	12:00	3			X			X					
RS 07		11:28												
RS 09		1:08												
RS 10		1:12												
R 1		1:13												
R 2		1:47												
R 3		1:20												
T 1		1:08												
LEI		0:00												

Chain-of-Custody Record and Analysis Request

Analysis Request

MTBE (EPA 8260) & 15 PCBs	MTBE (EPA 8260) & 15 PCBs	MTBE (EPA 8260) & 15 PCBs	THGAS (EPA 8260)	5 Oxygenates (EPA 8260)	7 Oxygenates (EPA 8260)	Lead PCBs (12 UCM & 12 EBR-EPA 8260)	Volatiles Hydrocarbons (EPA 8260)	Volatiles Organics Full List (EPA 8260)	Volatiles Organics EPA 8260 2 Drinking Water	TPH as Diesel (EPA 8260)	TPH as Motor Oil (EPA 8260)	Total Lead (EPA 8260)	W.E.T. Lead (EPA 8260)
X	X	X	X										

Remarks: For Lab Use Only: Sample Receipt

Temp °C: 7.5 Initials: H.K.K. Date: 03/20/07 Time: 12:35

Received by Laboratory: Kiff Analytical

Received by: Handip Kandola Time: 10:40 Date: 03/20/07

Received by: [Signature] Time: 7:10:07 Date: 03/20/07

Received by: [Signature] Time: Date: