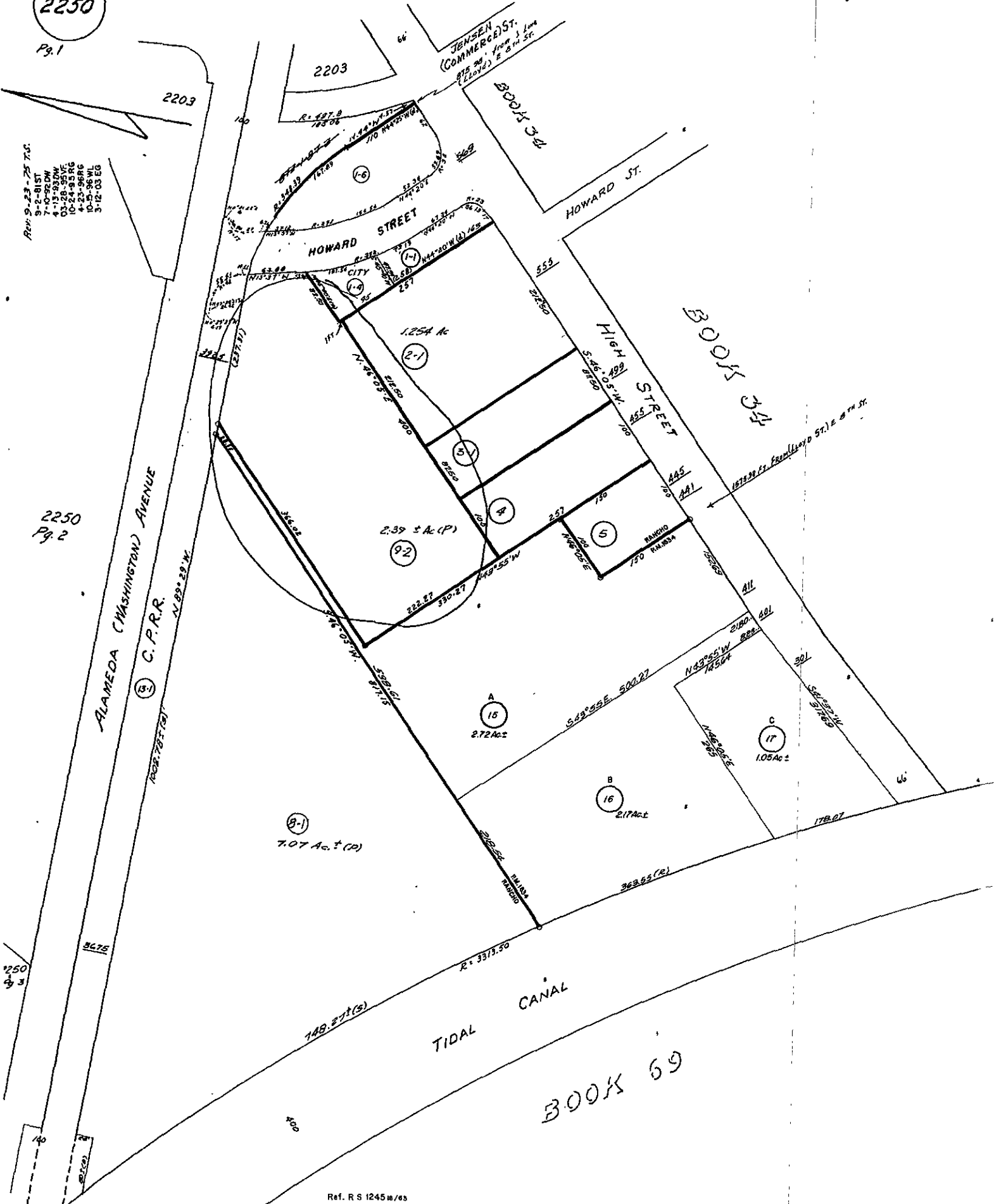


2250

Pg. 1

- Rev. 9-23-75 T.C.
- 9-2-81 ST
- 7-0-82 DW
- 4-1-83 DW
- 03-28-83 VE
- 10-24-85 RG
- 4-23-86 RC
- 10-9-86 WL
- 3-12-03 EG



2250 Pg. 2



COUNTY OF ALAMEDA
Assessor's Office

Property Value System

History

Value

Transfer

New Query

Parcel Number: 33-2250-9-2 Lien Date: 01/01/2005 Owner: RIF I ALAMEDA LLC
 Property Address: 3925 ALAMEDA AVE , OAKLAND, CA 94601-3931
 Parcel History

Mailing Name	Mailing Address	Document Date	Document Number	Value From Trans Tax	Parcel Count	Use
RIF I ALAMEDA LLC	11601 WILSHIRE BLVD STE 650, LOS ANGELES, CA 90025-0379	03/22/2004	2004-118371		1	4100
SMOOKE & SONS INVESTMENT CO c/o BOOKKEEPING GAYLENE	PO BOX 570030 , TARZANA, CA 91357- 0030	04/23/1980	1980-73048		2	4100

All information on this site is to be assumed accurate for property assessment purposes only, and is based upon the Assessor's knowledge of each property. Caution is advised for use other than its intended purpose.

The Alameda County Intranet site is best viewed in Internet Explorer Version 5.5 or later.
 Click [here](#) for more information regarding supported browsers.

Copyright © 2001 Alameda County

Property Detail**Alameda, CA RON THOMSEN, ASSESSOR**

Parcel # (APN): 033 -2250-009-02 Use Description:

Parcel Status:

Owner Name: SMOOKE
SONS INVESTMENT CO

Mailing Address: PO BOX 570030 TARZANA CA 91357-0030

Situs Address: 3925 ALAMEDA AVE OAKLAND CA 94601

Legal

Description:

ASSESSMENT

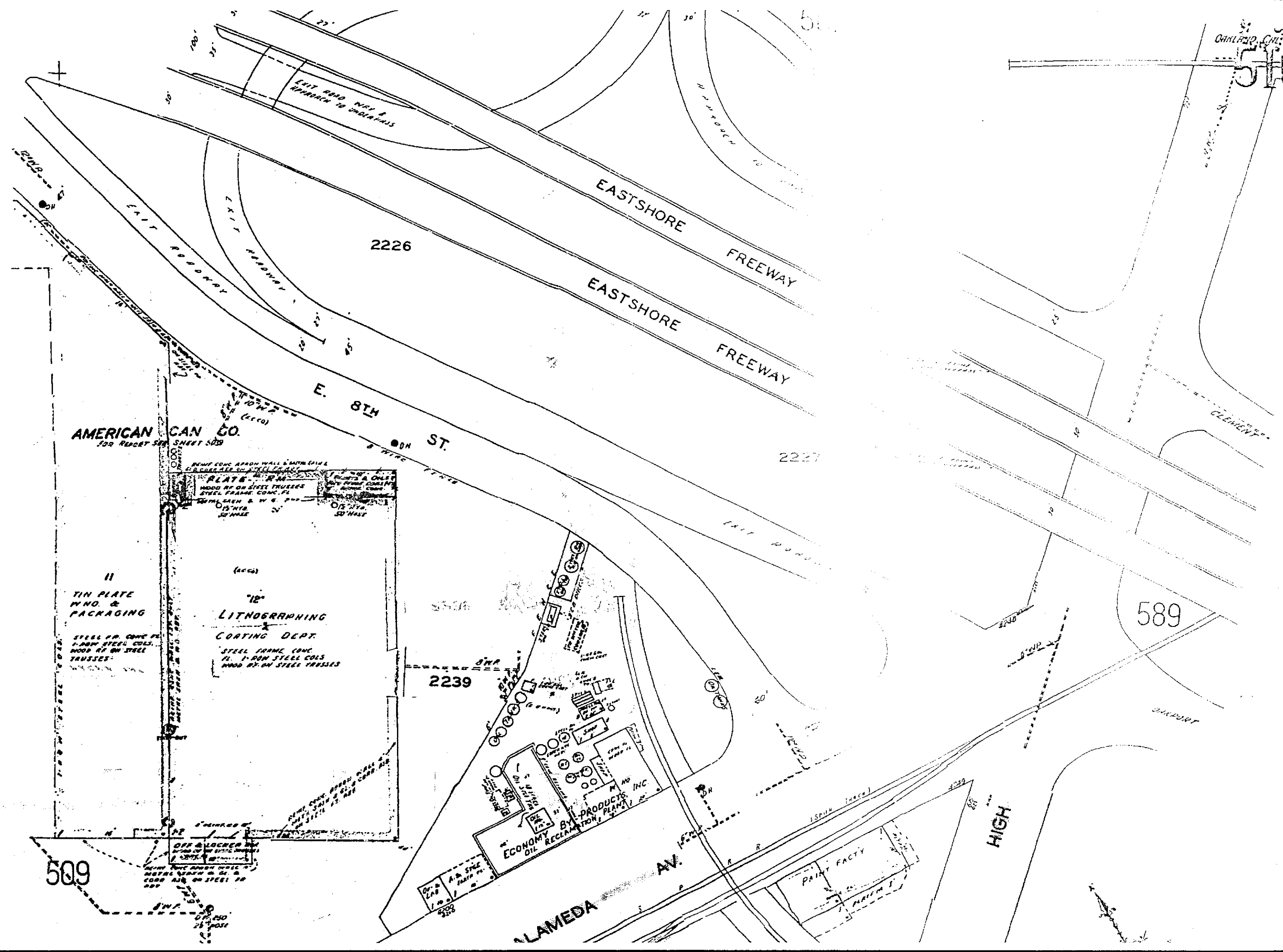
Total Value: \$849,035	Use Code: 410	Zoning:
Land Value: \$470,066	Tax Rate Area: 17032	
Impr Value: \$378,969	Year Assd: 2003	Improve Type:
Other Value:	Property Tax:	Price/SqFt:
% Improved 45%	Delinquent Yr	
Exempt Amt:	HO Exempt?: N	

SALES HISTORY

	<u>Sale 1</u>	<u>Sale 2</u>	<u>Sale 3</u>	<u>Transfer</u>
Recording Date:				04/23/1980
Recorded Doc #:				80*073048
Recorded Doc Type:				
Transfer Amount:				
Sale 1 Seller (Grantor):				
1st Trst Dd Amt:	Code1:		2nd Trst Dd Amt:	Code2:

PROPERTY CHARACTERISTICS

Lot Acres: 2.390	Year Built:	Fireplace:
Lot SqFt: 104,109	Effective Yr:	A/C:
Bldg/Liv Area:		Heating:
Units:	Total Rooms:	Pool:
Buildings:	Bedrooms:	
Stories:	Baths (Full):	Park Type:
Style:	Baths (Half):	Spaces:
Construct:		Site Inflnce:
Quality:	Garage SqFt:	
Building Class:		Timber Preserve:
Condition:		Ag Preserve:
Other Rooms:		



AMERICAN CAN CO.
339 REAR ST. SHEET 509

II
TIN PLATE
WIND. &
PACKAGING

STEEL FR. CONC. FL.
1-ROW STEEL COLS.
WOOD FR. ON STEEL
TRUSSES

REMOVE CONC. APRON WALL & BATH ROOM
& RECONSTRUCT TO MATCH ADJ. BLDG.
PLATE ROOM
WOOD FR. ON STEEL TRUSSES
STEEL FRAME CONC. FL.
STEEL FR. CONC. FL.
1-ROW STEEL COLS.
WOOD FR. ON STEEL
TRUSSES

(ACCS)
12'
**LITHOGRAPHING
&
COATING DEPT.**

STEEL FRAME CONC.
FL. 1-ROW STEEL COLS.
WOOD FR. ON STEEL
TRUSSES

OFF. & LOCKER
WOOD FR. ON STEEL TRUSSES
STEEL FR. CONC. FL.
1-ROW STEEL COLS.
WOOD FR. ON STEEL
TRUSSES

509

2239

ECONOMY OIL RECLAMATION PRODUCTS PLANT, INC.

OFF. & LAB
STEEL FR. CONC. FL.
1-ROW STEEL COLS.
WOOD FR. ON STEEL
TRUSSES

LAMEDA AV.

PAINT FACTY

HIGH

589

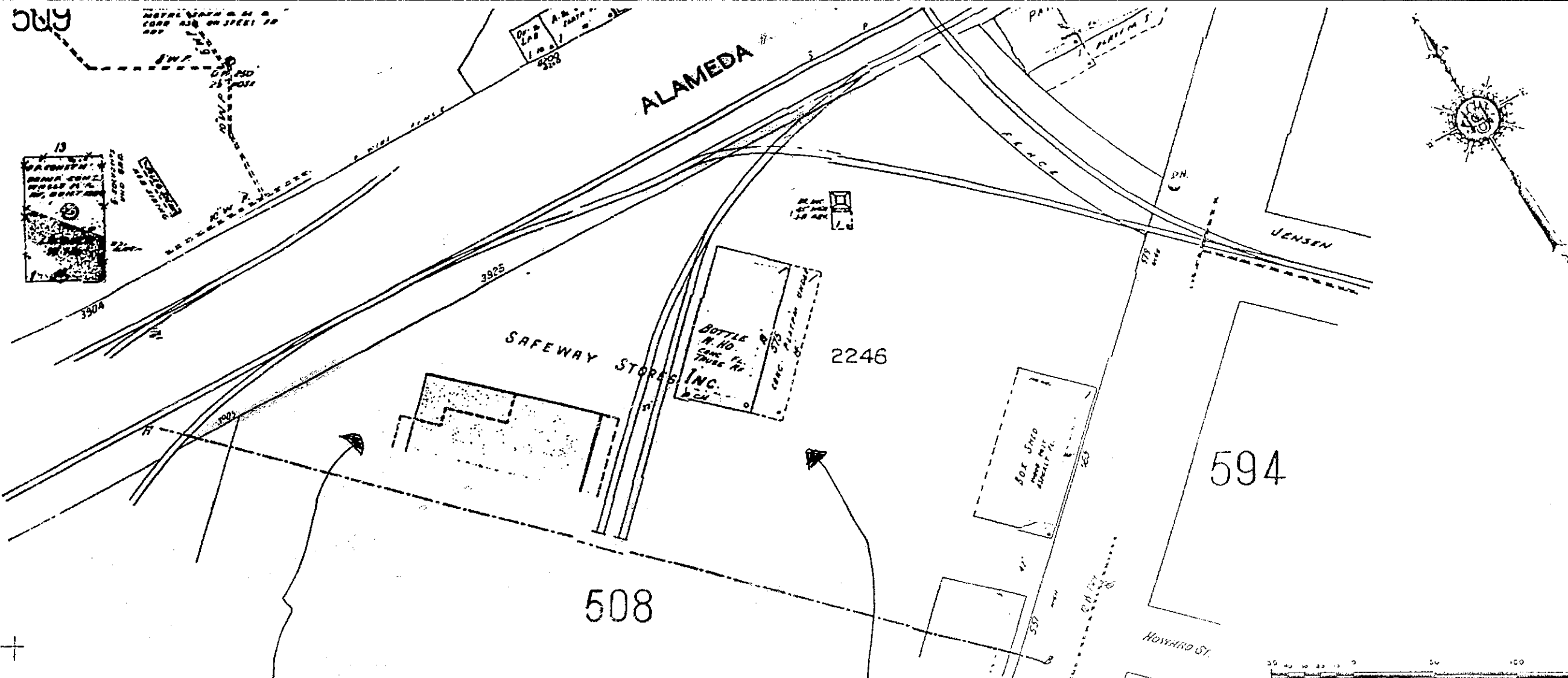
**EASTSHORE
FREEWAY**

**E. 8TH
ST.**

2226

**EASTSHORE
FREEWAY**

2227



3925 ALAMEDA AVE.
 (NORTH EAST PORTION OF PROPERTY)

569 HIGH STREET
 PROPERTY

EDR Sanborn, Inc.

This Sanborn™ map is a certified copy produced by EDR Sanborn, Inc. from its archives. Information on this map is derived from Sanborn field surveys conducted in:

Copyright © 1957 EDR Sanborn, Inc.
 EDR Sanborn, Inc. Research Associate

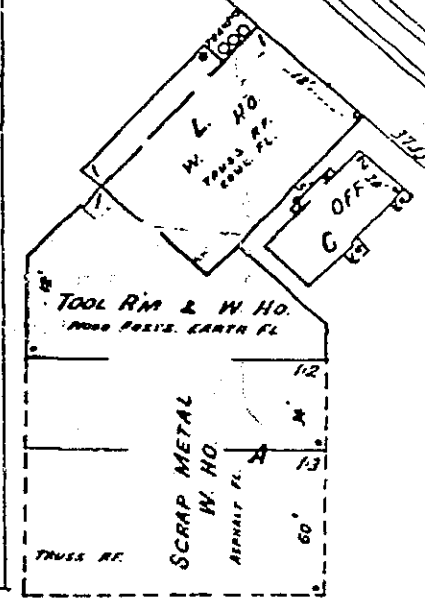
Reproduction in whole or in part of any EDR Sanborn, Inc. map may be prohibited without prior written permission from EDR Sanborn, Inc.

①



NO EXPOSURE
OFF. 10

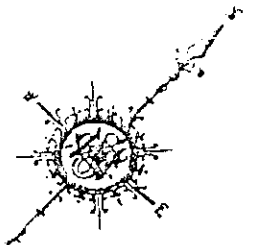
501



THE LEARNER CO.
PART TIME & DIST. PATROL WATCHMAN
POWER ELEC. HEAT BUTANE IN OFFICE
CITY WATER EXTG'RS

SCRAP METAL YARD

509



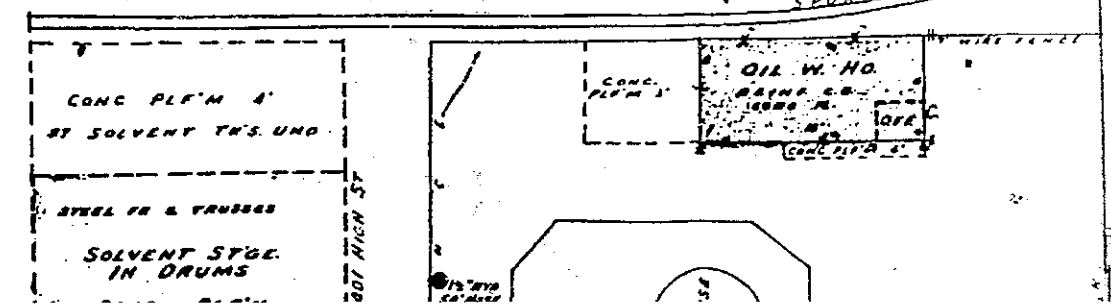
3925 ALAMEDA AVE
(SOUTHWEST PORTION)

U S Tidal Canal

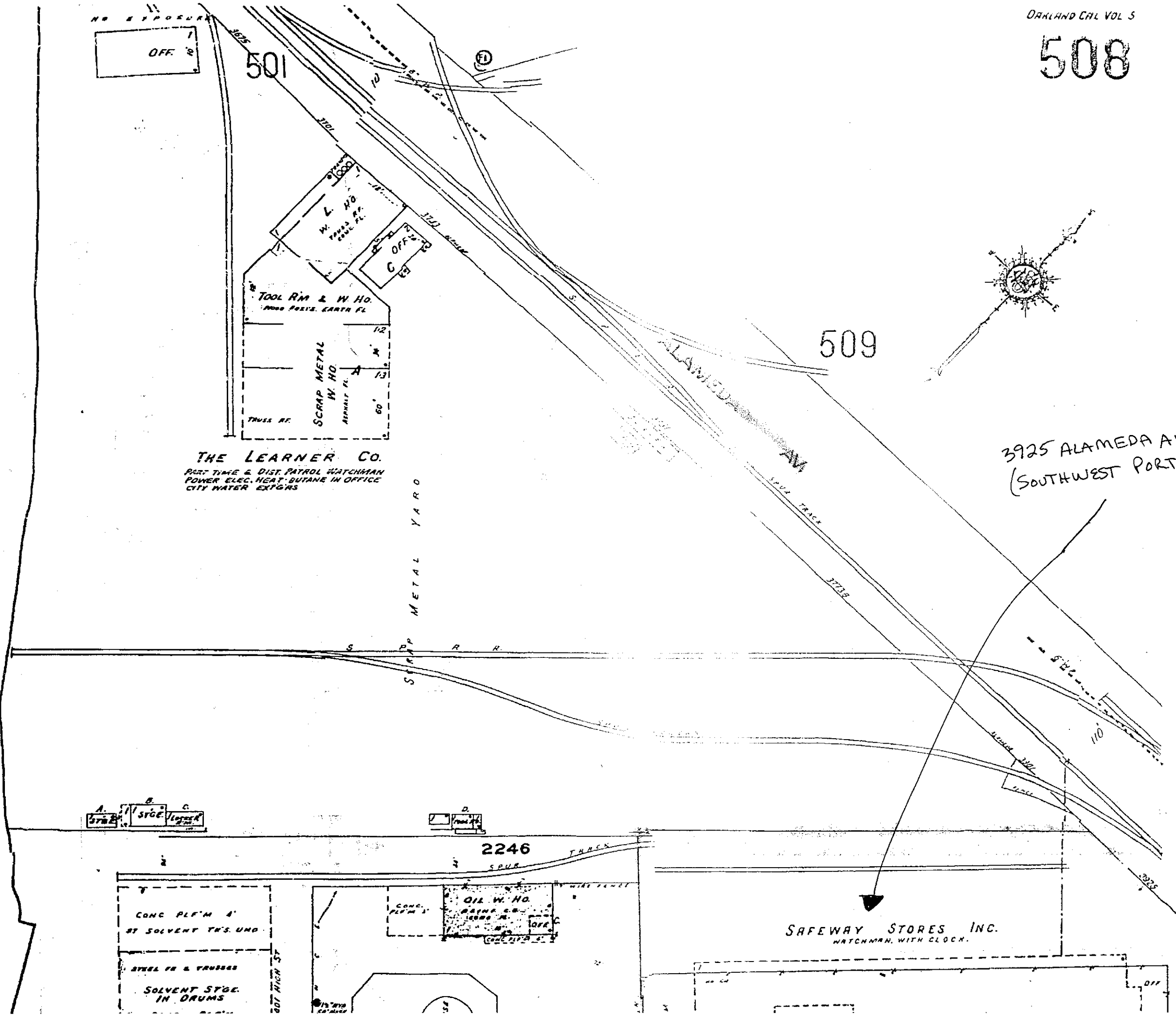
A. STGE. 3752
B. STGE. 3753
C. STGE. 3754

D. STGE. 3755

2246



SAFEWAY STORES INC.
WATCHMAN WITH CLOCK.



U S

AMERICAN MINERAL SPIRITS CO.
WESTERN DISTRIBUTING STA.

BY SOLVENT TNS UND
STEEL FR & FRAMES
SOLVENT STGE.
IN DRUMS
CONC. PLFM

STEEL SOLVENT TNS
25' HIGH PROTECTED
BY FORMITE

RICHFIELD OIL CORP'N.
CONSTN. & MAINTENANCE SUPPLY DEPOT

NO WATCHMAN CITY WATER
HEAT GAS. CHEM EXTER'S.

PAPER SUPPLIES
& EQUIPT. W. HO.
CONC. FL.

RICHFIELD OIL CORP'N.
DISTRIBUTING PLANT

NO WATCHMAN CITY WATER
HEAT GAS. CHEM EXTER'S.

STEEL OIL TNS ON CONC. BASE
PROTECTED BY FORMITE

SAFETY STORES INC.
WATCHMAN WITH CLOCK.

PRODUCE W. HO.
BEAN, CONC. PL
3-HO'S STEEL CO'S
PLASTIC WALLE 12-W 4 SHLTS

COLD STGE

WOOD & METAL
STAMPING

WOODEN'S
WAG. (AST)

STEEL & INSULATION SYBB.

CHUBBUCK CO. INC.
Bakery Oven Factory

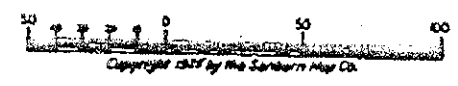
SLATER SHELVING SYSTEM
W. WATCHMAN

MACH. SHOP
OFF. 2ND

593

HIGH

594

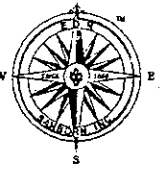


HULL
R'D

HOWARD ST

555 HIGH STREET
PROPERTY

PAINT SPRAY
BOOT-H



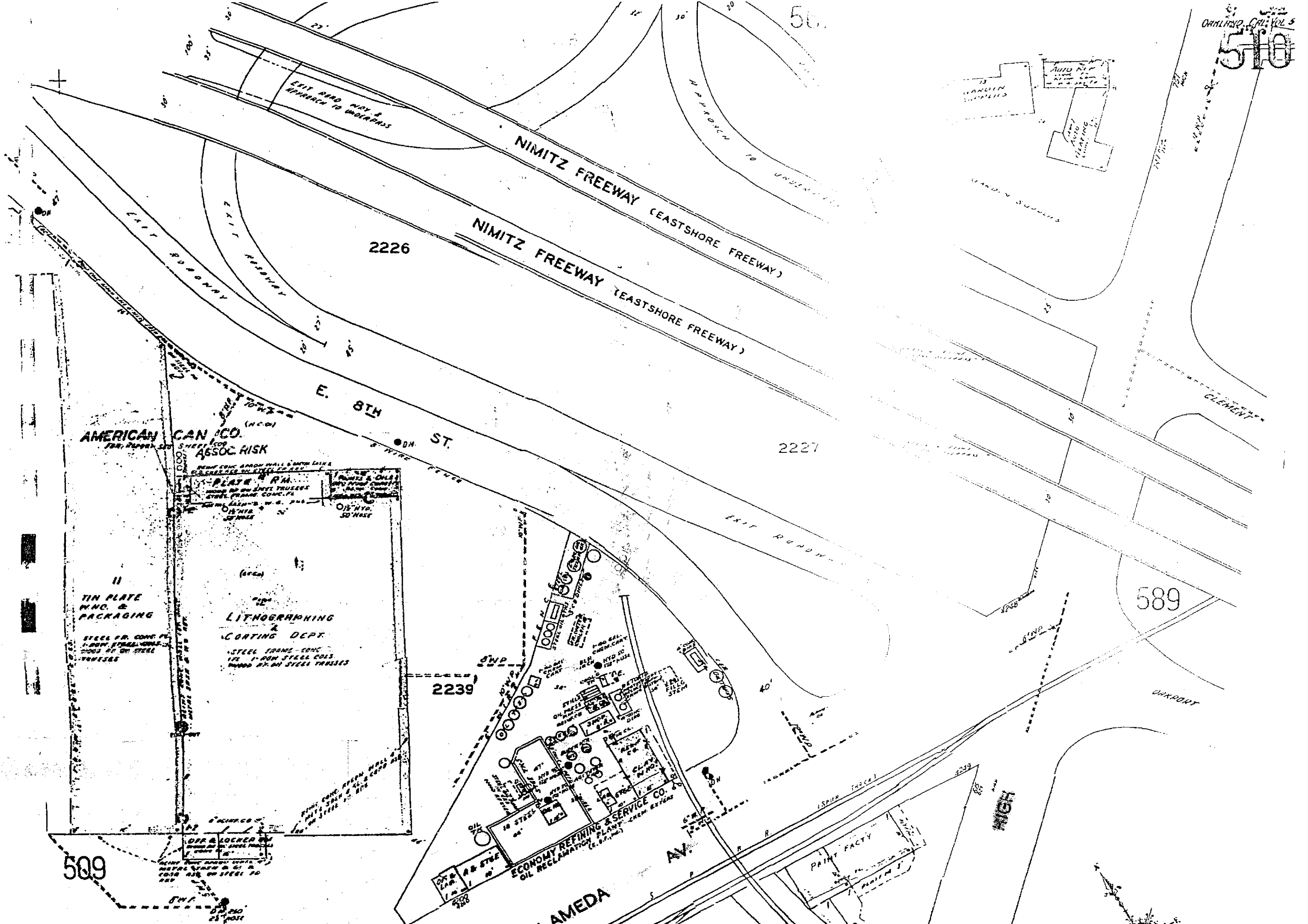
EDR Sanborn, Inc.

This Sanborn™ map is a certified copy produced
by EDR Sanborn, Inc. from its archives. Information
on this map is derived from Sanborn field surveys
conducted in:

Copyright © 1957 EDR Sanborn, Inc.
Year EDR Sanborn, Inc. Research Associate

2

Reproduction in whole or in part of any EDR Sanborn, Inc. map may be prohibited without prior written
permission from EDR Sanborn, Inc.



AMERICAN CAN CO.
 ASSOC. RISK

**TIN PLATE
 MFG. &
 PACKAGING**

**LITHOGRAPHING
 &
 COATING DEPT.**

ECONOMY REFINING & SERVICE CO.
 OIL RECLAMATION PLANT - CHEM. EFFLUENT

PAINT FACTORY

2226

2227

2239

589

509

NIMITZ FREEWAY (EASTSHORE FREEWAY)
 NIMITZ FREEWAY (EASTSHORE FREEWAY)

E. 8TH ST.
 8 WIDE LANE

AMEDA AV.
 25' HIGH

PLATE RM.
 100' x 100' STEEL TRUSSES
 STEEL FRAME CONC. FL.
 10' x 10' STEEL TRUSSES
 10' x 10' STEEL TRUSSES
 10' x 10' STEEL TRUSSES

STEEL FR. CONC. FL.
 100' x 100' STEEL TRUSSES
 10' x 10' STEEL TRUSSES

OFF & LOCKER RM.
 100' x 100' STEEL TRUSSES
 10' x 10' STEEL TRUSSES
 10' x 10' STEEL TRUSSES

STEEL FR. CONC. FL.
 100' x 100' STEEL TRUSSES
 10' x 10' STEEL TRUSSES
 10' x 10' STEEL TRUSSES
 10' x 10' STEEL TRUSSES
 10' x 10' STEEL TRUSSES

AUTO REPAIR
 AUTO REPAIR
 AUTO REPAIR

LAND SUPPLIES

WHPORT

CLEMENT

EXIT RAMP

EXIT RAMPWAY

EXIT RAMPWAY

EXIT RAMPWAY

EXIT RAMPWAY

EXIT RAMPWAY

EXIT RAMPWAY

EXIT RAMPWAY

EXIT RAMPWAY

EXIT RAMPWAY

EXIT RAMPWAY

EXIT RAMPWAY

EXIT RAMPWAY

EXIT RAMPWAY

EXIT RAMPWAY

EXIT RAMPWAY

EXIT RAMPWAY

EXIT RAMPWAY

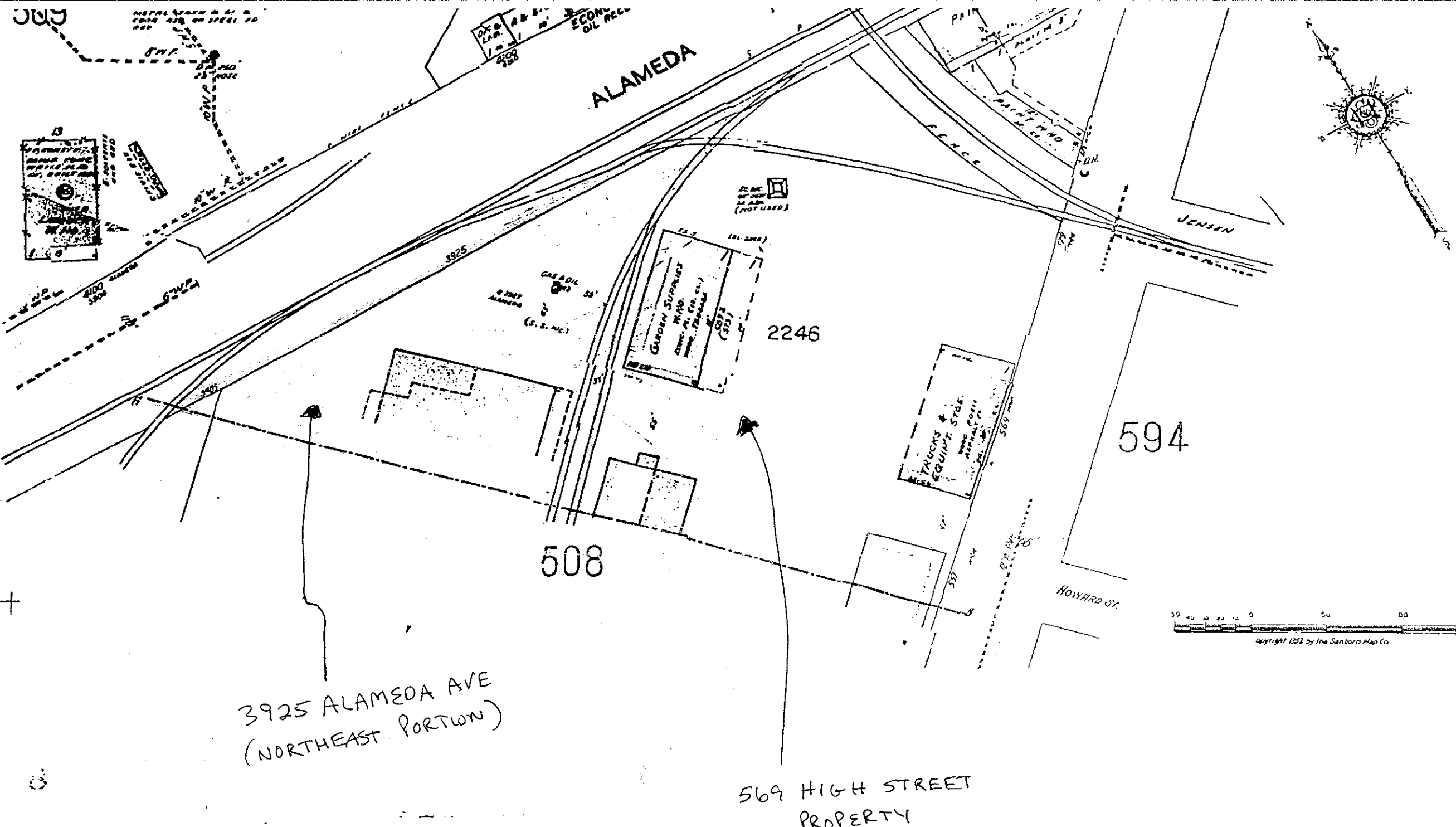
EXIT RAMPWAY

EXIT RAMPWAY

EXIT RAMPWAY

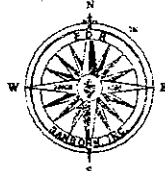
EXIT RAMPWAY

EXIT RAMPWAY



3925 ALAMEDA AVE
(NORTHEAST PORTION)

569 HIGH STREET
PROPERTY



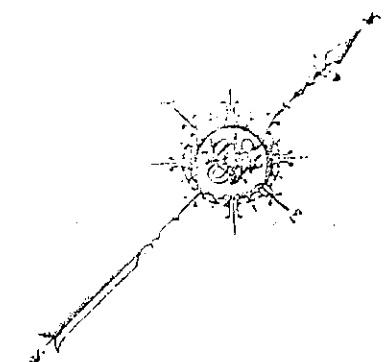
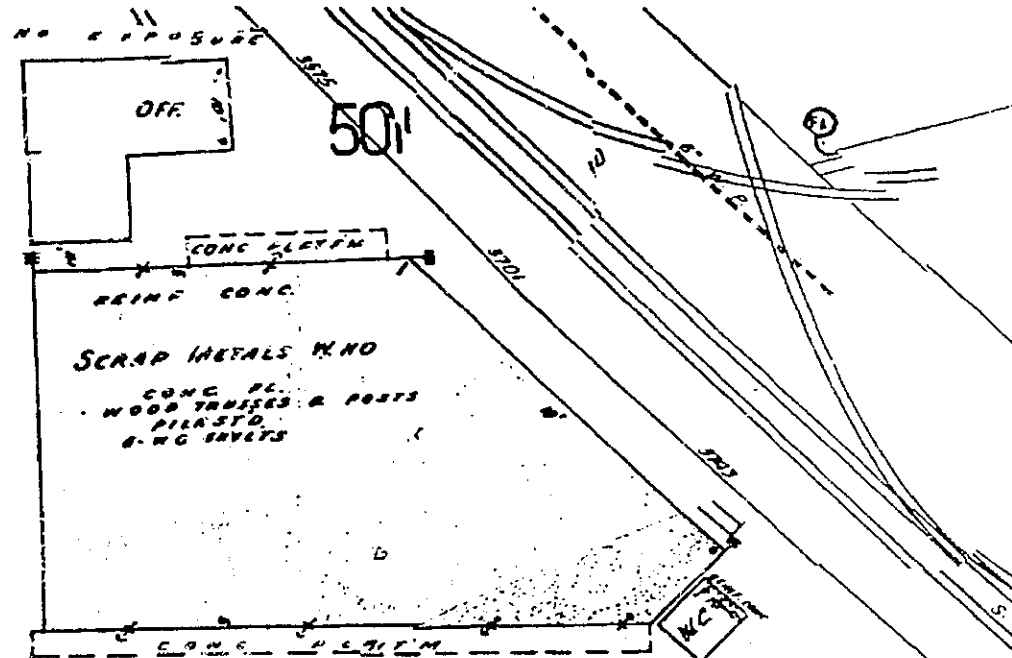
EDR Sanborn, Inc.

This Sanborn™ map is a certified copy produced by EDR Sanborn, Inc. from its archives. Information on this map is derived from Sanborn field surveys conducted in:

Copyright © 1969 EDR Sanborn, Inc.
Year EDR Sanborn, Inc. Research Associate

Reproduction in whole or in part of any EDR Sanborn, Inc. map may be prohibited without prior written permission from EDR Sanborn, Inc.

3



THE LEARNER CO.

PART TIME & DIST. PATROL WATCHMAN
POWER ELEC. HEAT. BUTANE IN OFF
CITY WATER ETC'S



(Tel. Co)

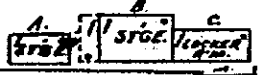


509

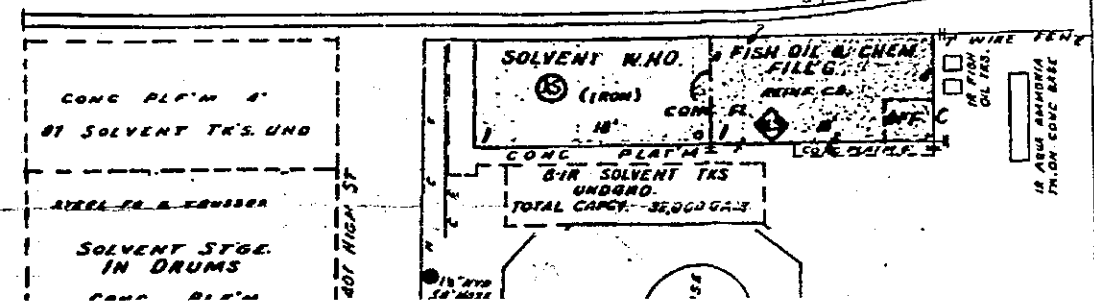
ALAMEDA

3925 ALAMEDA AVE
(SOUTHWEST PORTION)

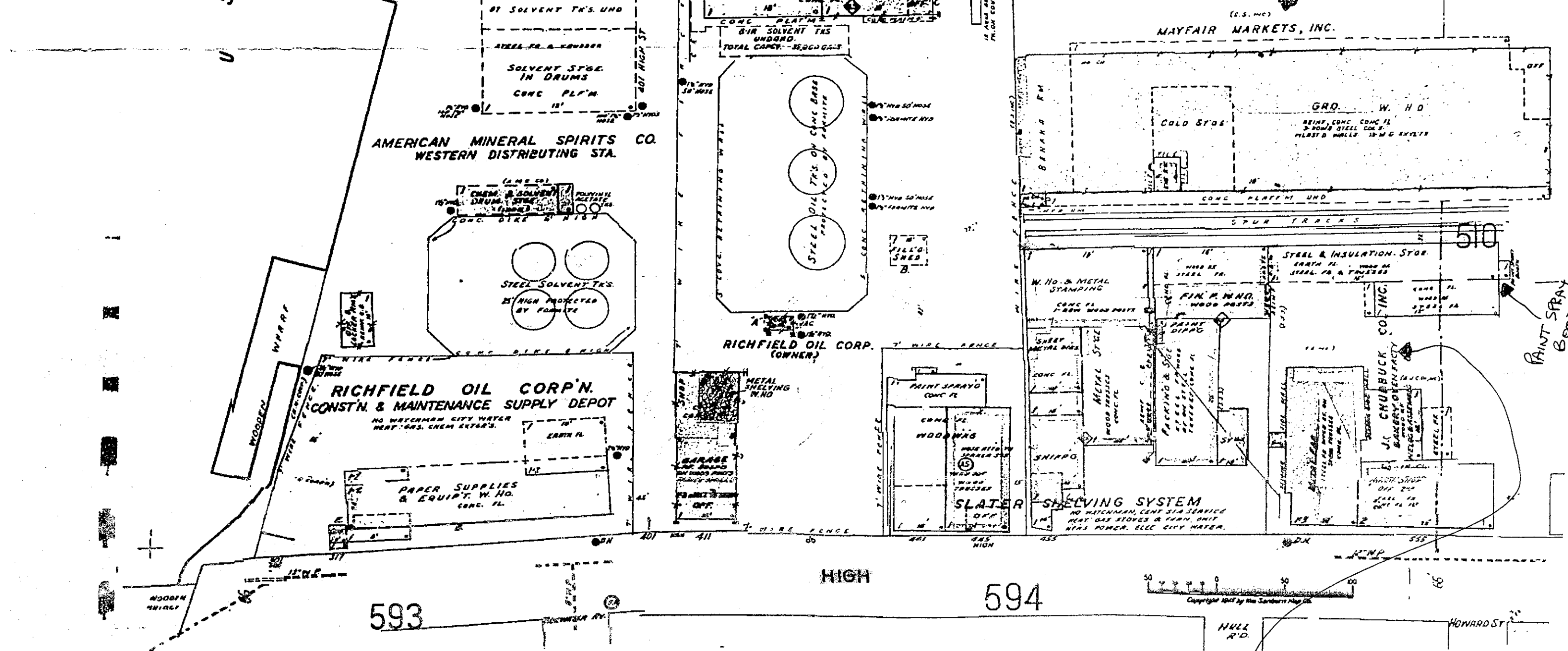
U S Tidal Canal



2246



MAYFAIR MARKETS, INC.



555 HIGH STREET PROPERTY

EDR Sanborn, Inc.

This Sanborn™ map is a certified copy produced by EDR Sanborn, Inc. from its archives. Information on this map is derived from Sanborn field surveys conducted in:

Copyright © 1969 EDR Sanborn, Inc.
Year EDR Sanborn, Inc. Research Associate

Reproduction in whole or in part of any EDR Sanborn, Inc. map may be prohibited without prior written permission from EDR Sanborn, Inc.

4