

3250 School St Oakland 5/25/95



Facing Maple Ave stained soil side of excavation facing west in gasoline UST pit.

3 ←

5-25-95



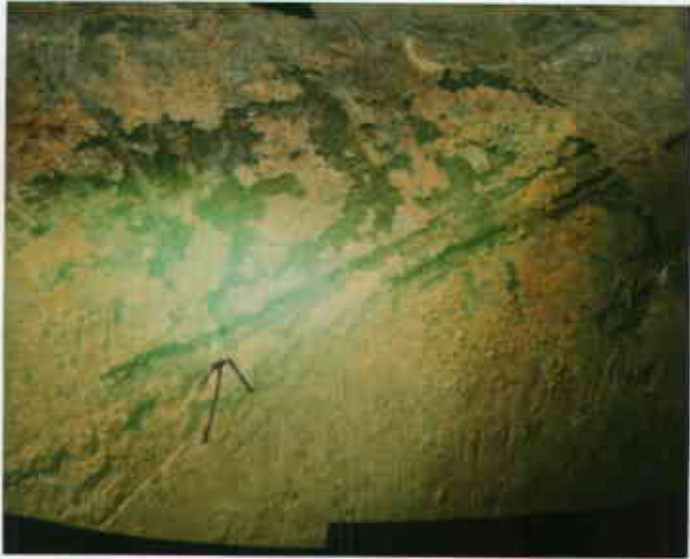
Facing Building - 3250 School St. Oakland slight staining noted on north/northeast wall of gas UST pit.

5/25/95



Facing School St. 3250 School St. Oakland stained soil in gasoline tank pit facing south/southwest.

5-24-95



Tank B heavy pitting & hole noted
3250 School St., Oakland

5/24/95



2 Gasoline USTs approx 750 gallon
(Tank A - background & Tank B foreground)
3250 School St. Oakland, CA

5-24-95



Ground Water noted under
Tank B at Not GW! GW not found to
depth of approx 14" ^{14" 1995}
"7 1/2" 3250 School St., Oakland

5-24-95



Tank A - no holes noted w/ slight
750 gallon gasoline pitting
3250 School St., Oakland, CA

5-24-95



Tank B - 750 gallon gasoline UST
3250 School St., Oakland

5/24/95



250 gallon Used-Oil UST (Tank C)
3250 School St., Oakland, CA

5/24/95



250 gallon Used Oil UST (Tank C)
3250 School St., Oakland, CA

5-24-95



~~Ground water~~ ^{Water} noted under Tank A
~~will not analyze~~
Samples collected GA-1 Not GW!
3250 School St., Oakland, CA