

Hunter
ENVIRONMENTAL SERVICES, INC.

Northern California Office
597 Center Avenue, Suite 350
Martinez, California 94553
415-372-3637 • 800-321-3637
FAX 415-372-3790

March 14, 1989

Project No. 02-258-003

Mr. Thomas Peacock
Alameda County
Hazardous Material Division
80 Swan Way #200
Oakland, California 94621

SUBJECT: Water Levels, Broadway VW

Dear Mr. Peacock:

The enclosed table is a record of water level data for the three ground-water monitoring wells at the Broadway Volkswagen facility located at 2740 Broadway, Oakland, California. A site map with well locations is also enclosed. This completes all requested information.

Per our phone conversation of March 9, 1989, you stated that once verification of water levels is received, site closure documentation will be sent by the County.

Please contact Sue Wickham at (415) 372-3637 with any questions or comments.

Very truly yours,

Susan S. Wickham

Susan S. Wickham, RG 3851
Project Hydrogeologist

SSW:vmf

Enclosures (2)

cc: SEMCO/Lois
Verelco/Mike Yang

*Spoke to Susan Wickham
She thought the case had
moved to closure.*

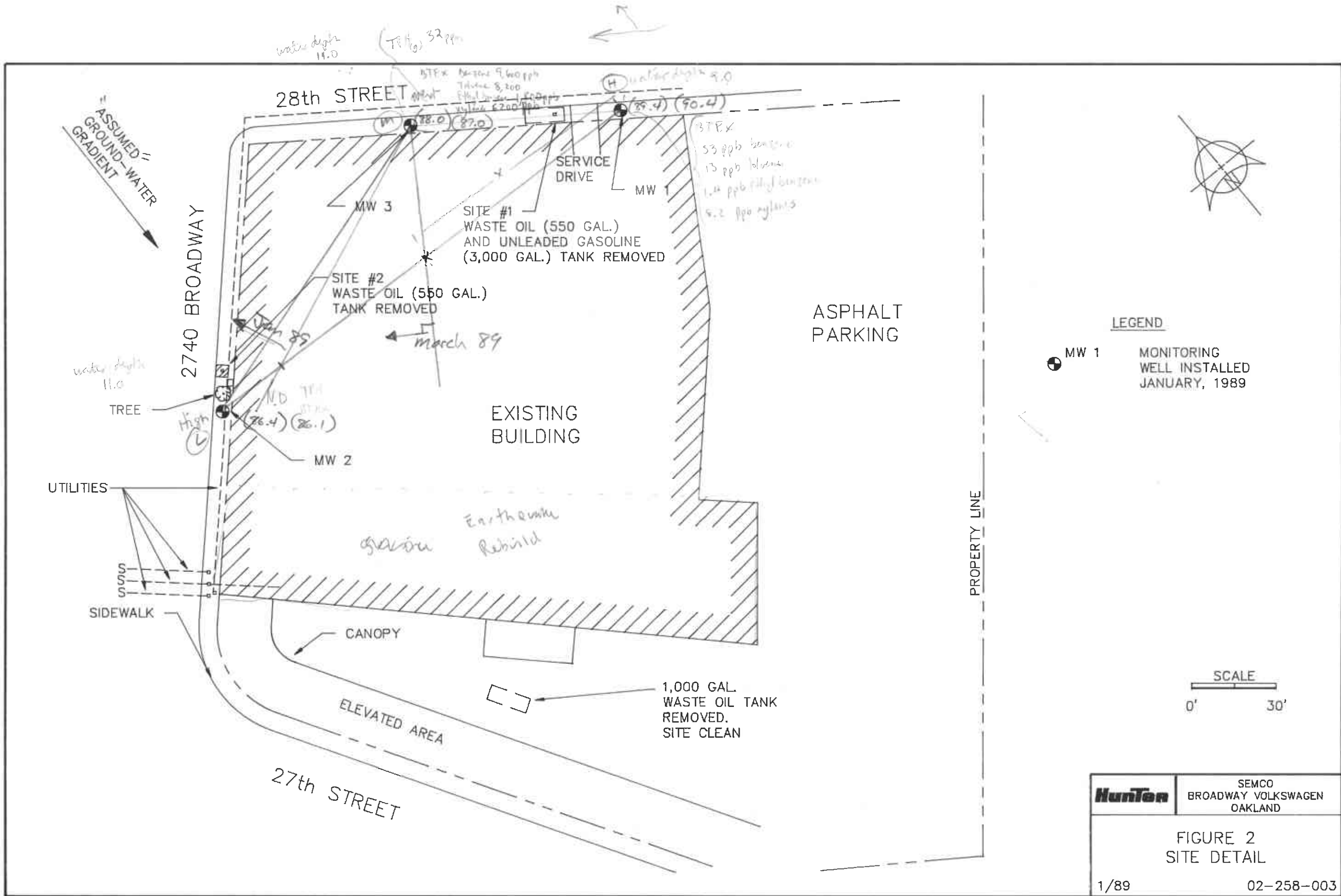
*I expressed my conflict
with the gradient map arrow
on the March 14, 1989 map.*

STATE OF CALIFORNIA
DEPARTMENT OF ENVIRONMENTAL HEALTH
AND AESTHETICS
1/31

TABLE 1 - GROUND WATER LEVELS/BROADWAY VOLKSWAGEN

Well No.	Date Surveyed	Relative Elev. of Well Reference Point* (Feet)	Relative Ground Water Elevation (Feet)	Depth of Water Below Ground Surface (Feet)
MW-1	1/21/89	97.9	90.4	7.5
MW-1	2/06/89	97.9	88.9	9.0
MW-1	3/13/89	97.9	89.4	8.5
MW-2	1/21/89	97.2	86.1	11.1
MW-2	2/06/89	97.2	86.2	11.0
MW-2	3/13/89	97.2	86.4	10.8
MW-3	1/21/89	98.7	87.0	11.7
MW-3	2/06/89	98.7	87.7	11.0
MW-3	3/13/89	98.7	88.0	10.7

*Reference point is notched at top of riser



Hunter	SEMCO BROADWAY VOLKSWAGEN OAKLAND
	FIGURE 2 SITE DETAIL
1/89	02-258-003