

Detterman, Mark, Env. Health

From: PDKing0000@aol.com
Sent: Monday, March 05, 2012 6:52 PM
To: Detterman, Mark, Env. Health
Subject: 2301 E 12th Street Oakland (Mel Senna Brake) Borehole SB19 Schedule
Attachments: 0404.R10 Figure 1 SB19.pdf

Categories: Red Category

Hi Mark,

Based on Union Pacific Rail Road (UPRR) permit fees of approximately \$5,000 we have re-located proposed borehole SB19 to a location in the sanitary sewer trench that is immediately outside the UPRR right-of-way. The proposed revised location is shown in the attached pdf

We are scheduled to hand auger in the sewer trench at location SB19 shown in the attached pdf (document 0404.R10 Figure 1 SB19.pdf) on Monday afternoon 3/12/12 for collection of a groundwater sample in accordance with procedures set forth in P&D's May 2, 2011 Subsurface Investigation Work Plan.

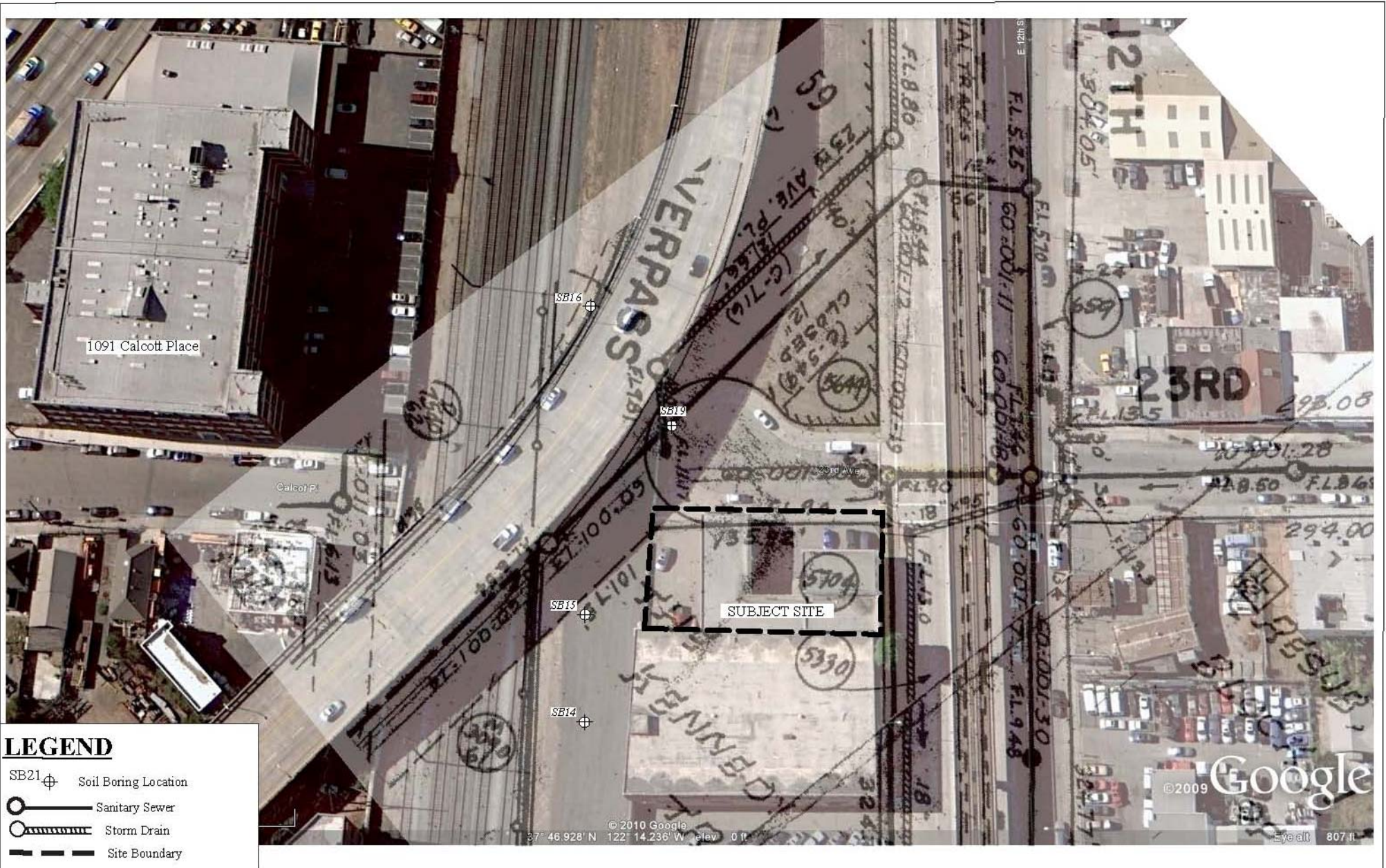
Please let me know if you have any questions or need any additional information. Thank you!

Paul

Paul H. King
Professional Geologist

P&D Environmental, Inc.
55 Santa Clara Avenue, Suite 240
Oakland, CA 94610

(510) 658-6916 telephone
(510) 834-0152 facsimile
(510) 387-6834 cellular
Paul.King@pdenviro.com



LEGEND

- SB21 ⊕ Soil Boring Location
- Sanitary Sewer
- ▬— Storm Drain
- - - Site Boundary

Figure 1
 Site Vicinity Aerial Photograph Showing Proposed Sample Collection Locations
 2301 East 12th Street
 Oakland, California



Base Map from:
 City of Oakland Storm Drain and Sanitary Sewer Map; and
 Google Earth, October 2009

P&D Environmental, Inc.
 55 Santa Clara Ave., Suite 240
 Oakland, CA 94610

