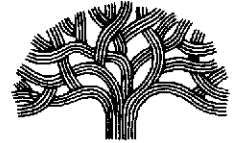




## CITY OF OAKLAND



DALZIEL BUILDING • 250 FRANK H. OGAWA PLAZA, SUITE 5301 • OAKLAND, CALIFORNIA 94612-2034

Public Works Agency  
Environmental Services

FAX (510) 238-7286  
TDD (510) 238-7644

September 7, 2000

Ms. Eva Chu  
Alameda County Department of Environmental Health  
1131 Harbor Bay Parkway  
Alameda, California 94502

**Subject: Request for Information; Off-Site Historical Land Use, 670 98<sup>th</sup>  
Avenue, Oakland, California (94411)**

Dear Ms. Chu:

Enclosed please find the subject information for your use. The information is submitted in response to your request to verify historical land use (i.e., lack of use as gasoline stations) of parcels across the street from the subject site. A limited Phase I environmental assessment was performed by Applied Geotechnology, Inc. (AGI) in 1993, which included documentation of historical land use addressing your information request. Pertinent sections of the report are provided for your ease in review, although a copy of the report should be in your files, since it included groundwater monitoring data.

The AGI report clearly identifies the properties across the street as "stores," "commercial buildings," or "residential" as early as 1926, with no indication of gasoline station use. All pertinent conditions shown on maps and historical aerial photos were noted in the report, and the lack of gasoline stations noted across the street means they did not exist.

Groundwater level data show the hydrologic gradient direction to be toward the west-northwest (i.e., generally toward the properties across the street) at the time of the AGI report. If you have any questions or require additional information, please call me at (510) 238-7695.

A handwritten signature in black ink, appearing to read "John B. Adams".

John B. Adams  
Environmental Program Specialist

cc: Andrew Clark-Clough

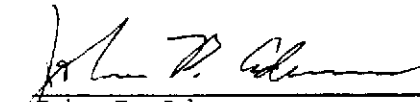
A Report Prepared For

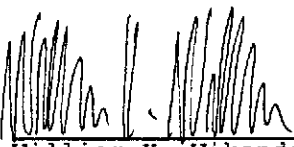
City of Oakland  
OPW Environmental Affairs  
1333 Broadway, Suite 330  
Oakland, California 94612

**LIMITED PHASE I ENVIRONMENTAL ASSESSMENT  
AND GROUNDWATER MONITORING  
670 AND 692 98th AVENUE  
OAKLAND, CALIFORNIA**

AGI Project No. 15,687.009.04

by

  
\_\_\_\_\_  
John B. Adams  
Environmental Scientist

  
\_\_\_\_\_  
William K. Wikander, P.E.  
Associate Engineer

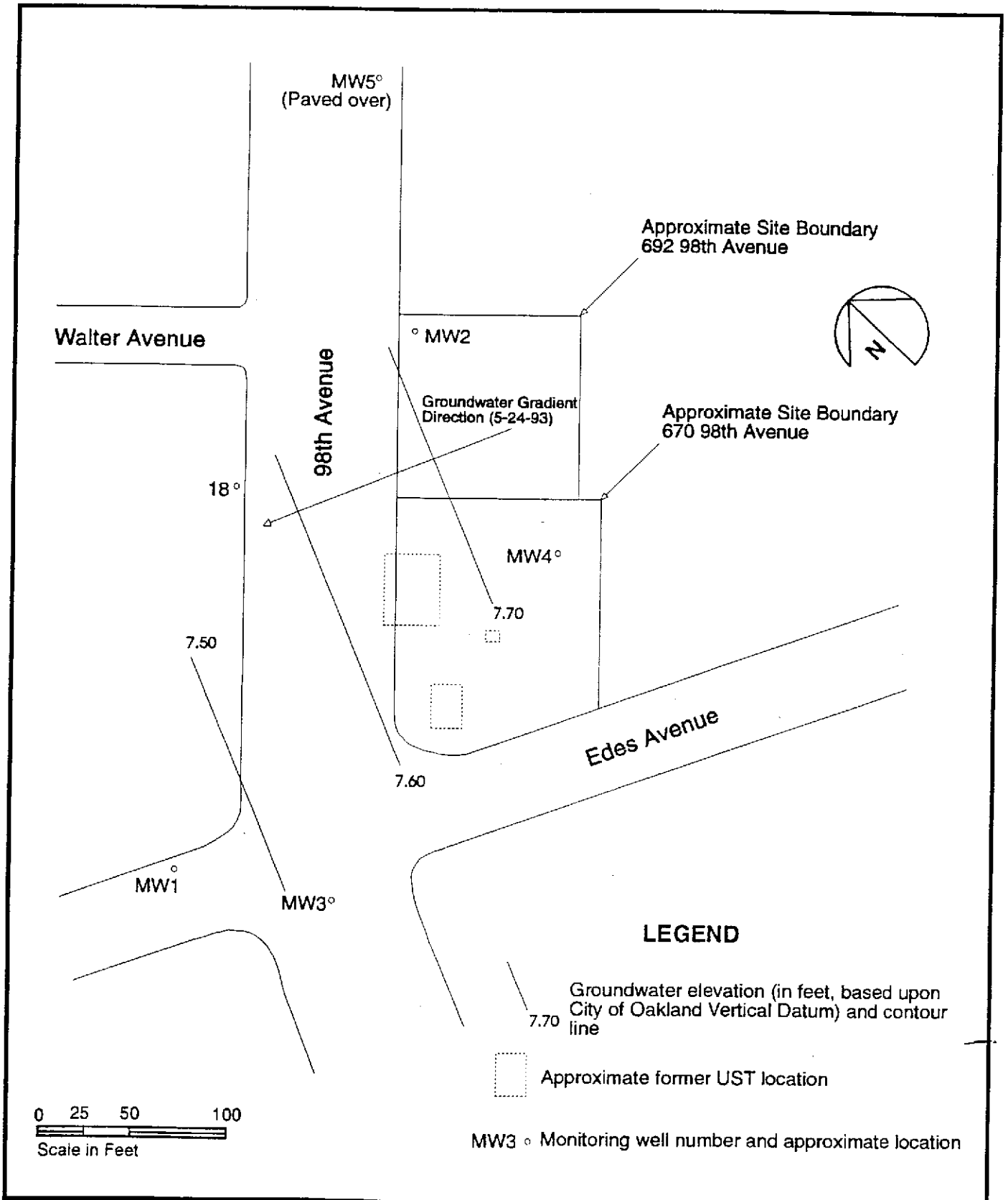
APPLIED GEOTECHNOLOGY INC.  
100 Hegenberger Road, Suite 210  
Oakland, California 94612  
510/568-9475

August 11, 1993

- ▶ A Phase II Environmental Assessment was performed by SCI during 1989 and 1990, in conjunction with a widening project at the south side of 98th Avenue. Several borings were drilled, and 6 groundwater monitoring wells were installed as part of the assessment. Hydrocarbon and solvent contamination was detected in groundwater samples from the monitoring wells. Free product was reportedly present in monitoring wells MW1 and 18. About 1,900 cubic yards of contaminated soil were removed from around the former UST locations, and disposed of off-site. A trench was installed along the north side of 98th Avenue to allow future extraction and remediation of contaminated water. Groundwater remediation has not been performed.

### 2.3 REGIONAL HISTORY

The area surrounding the subject properties has historically been a mixed residential, commercial, and industrial area. Over the years, the density of residential, commercial, and light industrial properties has increased. Many of the industrial properties currently appear to be unused, though most of the structures remain. Large industrial facilities such as Glass Pak, Inc. at 9401 San Leandro Street (formerly the Gerber Foods Plant location) still operate, but many of the heavy industrial facilities, such as the B&M Foundry at the northeast corner of the intersection of 100th Avenue and Pearmain Street, General Metals Corporation Foundry at the northeast corner of the intersection of 105th and Edes Avenues, and plating companies to the east of the subject properties, are no longer in operation.

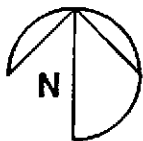
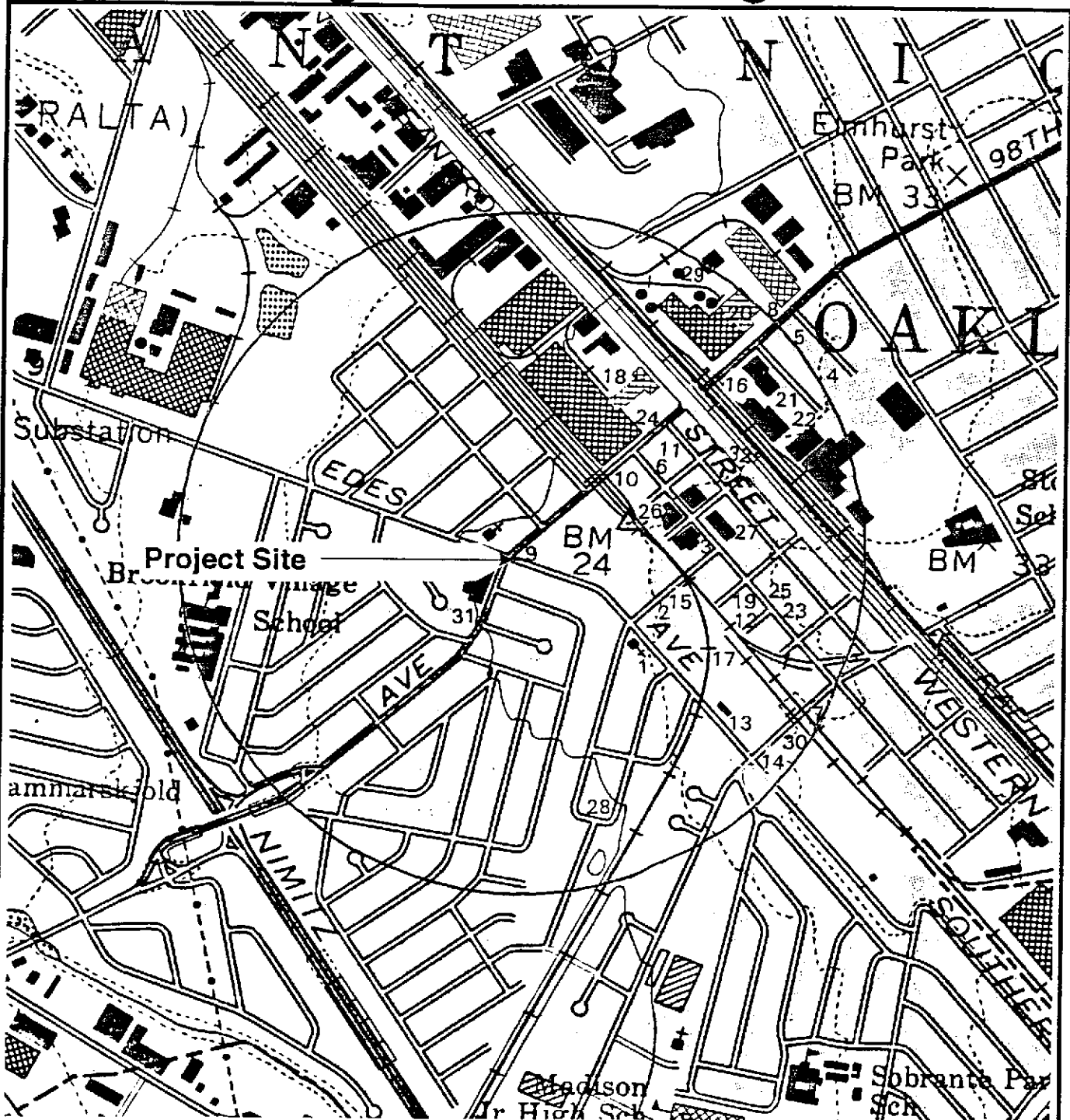


 **Applied Geotechnology Inc.**  
 Geotechnical Engineering  
 Geology & Hydrogeology

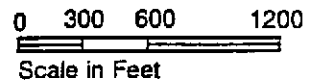
**Site Plan**  
 City of Oakland/670 and 692 98th Avenue  
 Oakland, California

FIGURE  
**2**

JOB NUMBER	DRAWN	APPROVED	DATE	REVISED	DATE
15,687.009.04	JBA		9 Jul 93		



(See Figure 4 for addresses associated with the above reference number locations)



**Applied Geotechnology Inc.**  
Geotechnical Engineering  
Geology & Hydrogeology

**Approximate Location Map**  
City of Oakland/670 and 692 98th Avenue  
Oakland, California

FIGURE  
**3**

JOB NUMBER	DRAWN	APPROVED	DATE	REVISED	DATE
15,687.009.04	JBA		13 Jul 93		

Ref. No.	Facility Name	Street Address	List/Map Source
1	Action Plating	10132 Edes Avenue	RCRA, FINDS, CERCLIS
2	Allen ABDOS Company	718 Douglas Avenue	FINDS, LUST
3	B&M Foundry	Pearmain & 100th	Sanborn Map
3	National Egg Case Company	Pearmain & 100th	Sanborn Map
4	Bal's Tree Service	9911 Gould Street	UST
5	Beretta Property	9838 Gould Street	UST, NBT, LUST
6	Call Ben Company	9828 Pearmain Street	FINDS
7	Chemicals & Supplies Company	751 105th Avenue	FINDS, DTSC
7	Holchem Inc.	751 105th Avenue	FINDS
8	CHK Manufacturing	960 98th Avenue	FINDS
9	City of Oakland	98th & Edes	LUST*
10	City of Oakland	816 98th Avenue	LUST
11	City of Oakland	9801 San Leandro Blvd	LUST
11	Thrifty Oil Station No. 61	9801 San Leandro Blvd	UST
12	Cornnuts, Inc.	10229 Pearmain Street	FINDS
13	Custom Coating Company	10441 Edes Avenue	DTSC
13	Southwestern Petroleum Corp.	10441 Edes Avenue	FINDS
14	Edes Industrial Park	701 105th Avenue	RCRA, FINDS
15	Edmund C. Olson	740 Douglas Avenue	UST
16	Fleischmann's Yeast, Inc.	921 98th Avenue	RCRA, FINDS, LUST
16	Nabisco Brands, Inc.	921 98th Avenue	RCRA, FINDS
17	General Metals Corp. Foundry	105th & Edes	Sanborn Map
18	Gerber Products Company	800 98th Avenue	Sanborn Map
19	Golden Gate Die Casting	10201 Pearmain Street	DTSC
20	Granny Goose Foods, Inc.	916 98th Avenue	UST
21	Granny Goose Foods - Vehicle	9846 Medford Avenue	UST
22	HTI Tank Wash	9957 Medford Avenue	CAL-EPA
23	K&L Plating	10306 Pearmain Street	RCRA, FINDS
23	Unocal Station No. 2720	10306 Pearmain Street	FINDS
24	Marine Engine Works	851 98th Avenue	Sanborn Map
25	Melrose Metal Finishing	10222 Pearmain Street	RCRA, FINDS, LUST
26	Miller Machine Company	9929 Pearmain Street	DTSC
27	Mortensens	10122 Pippin Street	UST
28	Pickie Factory	443 Hale Avenue	Sanborn Map
29	Standard Brands of California	900 98th Avenue	Sanborn Map
30	Stern Company	742 105th Avenue	FINDS
31	unidentified fuel station	619 98th Avenue	UST
32	Wells Fargo Bank	9999 San Leandro St.	LUST

Notes: See Figure 3 for map locations.

\* - Includes 670 and 692 98th Avenue.



**Applied Geotechnology Inc.**  
Geotechnical Engineering  
Geology & Hydrogeology

## Potential Contaminant Sources

City of Oakland/670 and 692 98th Avenue  
Oakland, California

FIGURE

**4**

JOB NUMBER  
15,687.009.04

DRAWN  
JBA

APPROVED

DATE  
13 Jul 93

REVISED

DATE