**MOBILE CHEM LABS INC.**

1678 Reliez Valley Road • Lafayette, CA 94549  
Phone (925) 945-1266 • Fax (925) 943-6884

**FACSIMILE COVER SHEET**DATE: 10-6-00

TIME: \_\_\_\_\_

TO: George NunfieldFROM: RON EVANSMobile Chem Labs, Inc.NUMBER OF PAGES INCLUDING COVER SHEET: 7

COMMENTS: I HAVE MARKED WHERE I WOULD  
THINK THE MTBE PEAK IS ON EACH  
CHROMAT. PLEASE REVIEW FOR YOURSELF  
& CALL ME IF YOU NEED MORE INFO.  
DATA FOR MTBE WAS ~~NOT~~ INTEGRATED.

SHOULD YOU HAVE ANY PROBLEMS IN RECEIVING THIS FAX, PLEASE DO NOT  
HESITATE TO CALL US AT THE ABOVE NUMBER.

CAN NOT QUANTITATE

21 PEAKS > AREA/HT REJECT

21 GROUP 1 PEAKS TOTAL AMOUNT 2386.9460

*New Shell 1000 ppb Gas*

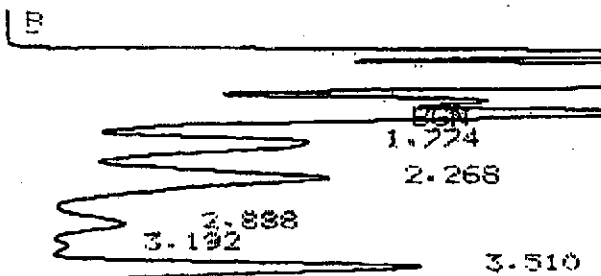
STANDARD  
*Standard*

RUN 3 12:24 94/03/31

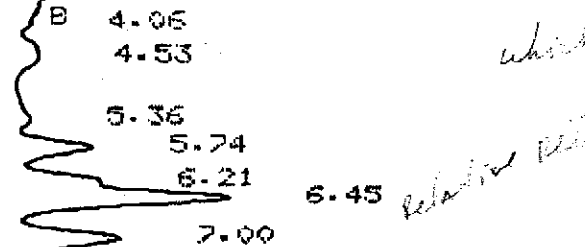
METHOD 3 P-T 8020-602 *FID*  
DETECTOR 1 ATTN 64

DETECTOR 2 *PIP* ATTN 256

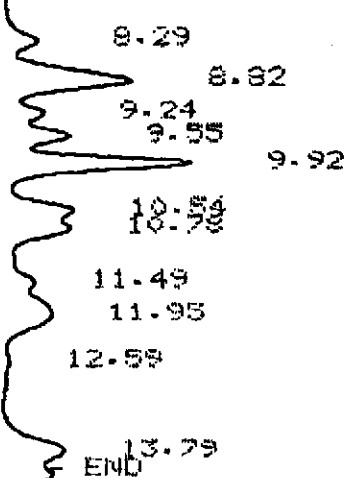
C 10



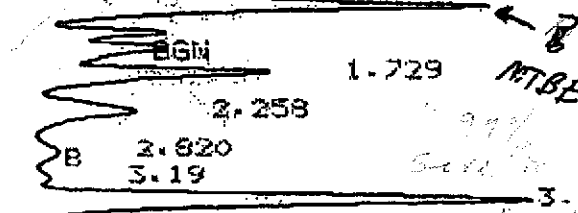
U 5



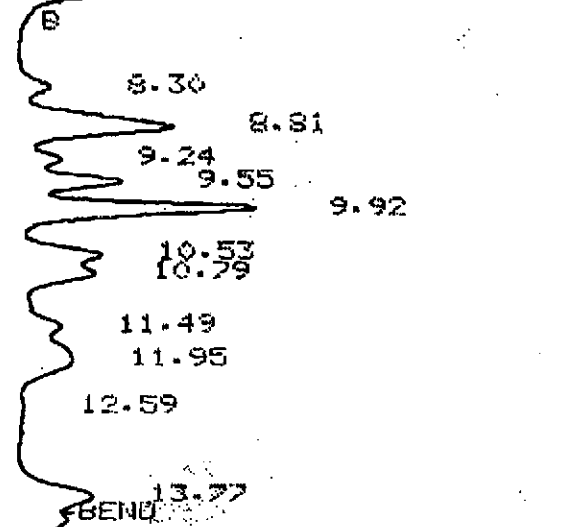
U 6



U 5



U 6



RUN 3 12:24 94/03/31

MW-1

034373

(Sml)

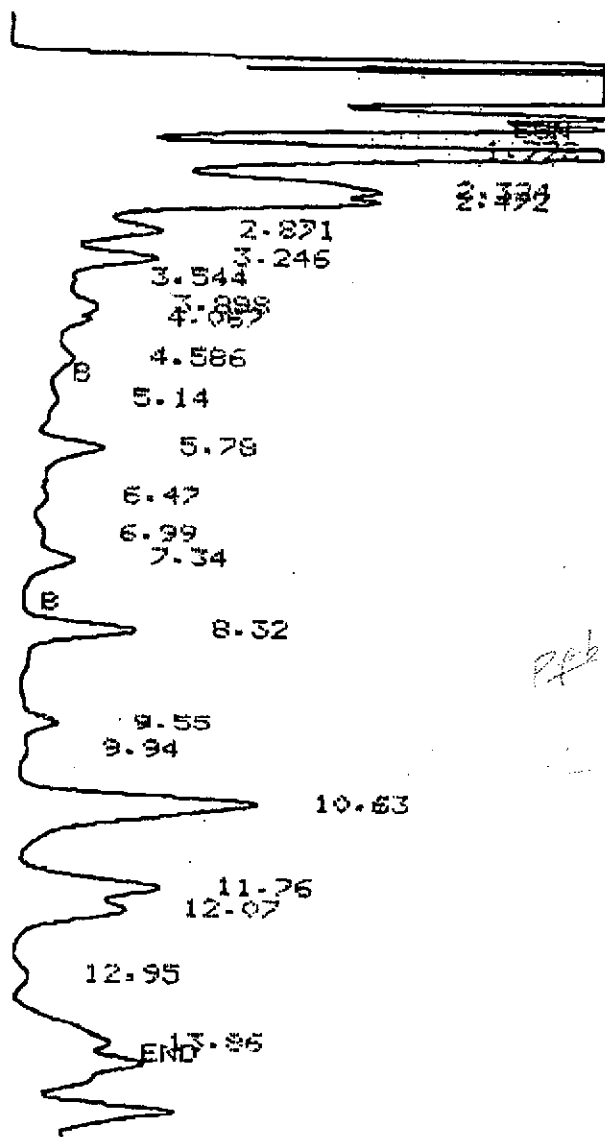
RUN 12 16:15 94/03/31

METHOD 3 P-T 8020-602

DETECTOR 1 ATTN 64

DETECTOR 2 ATTN 256

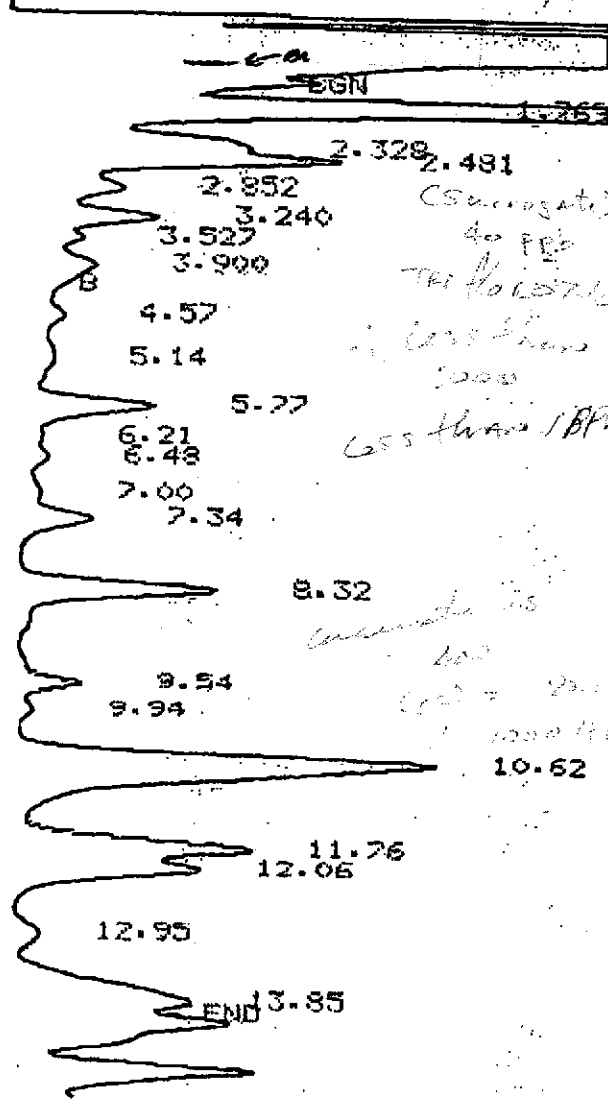
C 10



W 5

W 6

B



W 5

W 6

RUN 12 16:15 94/03/31

METHOD 3 P-T 8020-602 CALCULATION: EXT STD

DETECTOR 1

RT	AREA	BC	RRT	RF	AMOUNT	NAME	GF
1.778	170.3412	V	0.177	1.0000	170.3412		
2.324	17.7715	V	0.232	1.0000	17.7715		
2.472	5.7719	V	0.247	1.0000	5.7719		

MW-2

034374 (5ml)

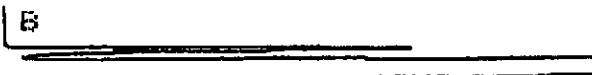
RUN 11 15:55 94/03/31

METHOD 3 P-T 8020-602

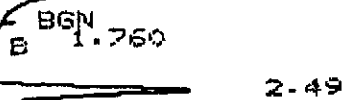
DETECTOR 1 ATTN 64

DETECTOR 2 ATTN 256

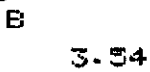
C 10



W 5



2.49



B

W 6

5.81

6.48

7.03

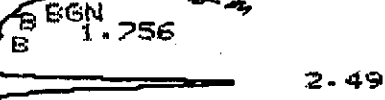
B

9.94

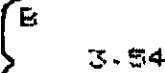
END



W 5



2.49



B

W 6

5.77

6.48

7.04

B

9.85

9.60

9.94

END

RUN 11 15:55 94/03/31

METHOD 3 P-T 8020-602 CALCULATION: EXT STD

DETECTOR 1

RUN DEVIATIONS

TIME	INJ/DET	DEVIATION	CHANGE	TYPE
0.72	2	PEAK	OVERRANGE	

MW-2 Spike 034374 (5ml) w/40 ppb BTEX

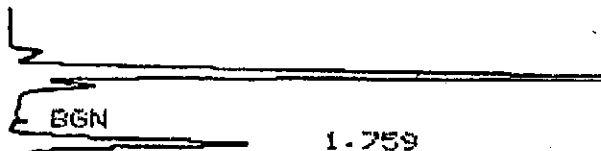
RUN 14 16:55 94/03/31

METHOD 3 P-T 8020-602

DETECTOR 1 ——— ATTN 64

DETECTOR 2 ——— ATTN 256

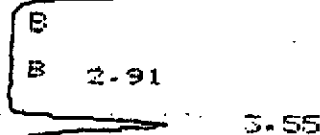
C 10



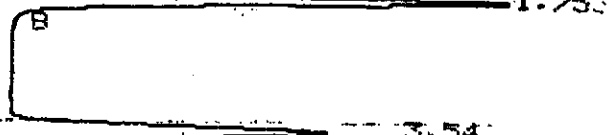
C 10



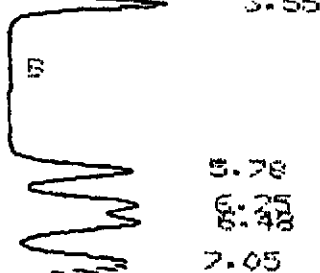
W 5



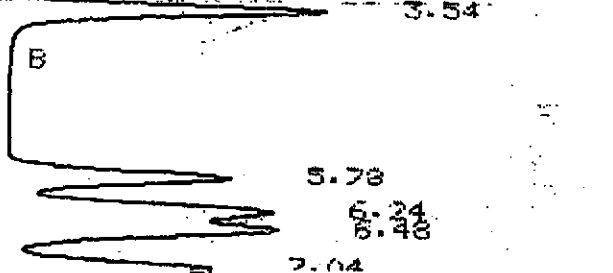
W 5



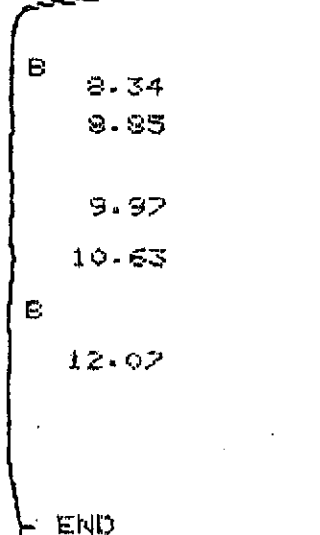
W 6



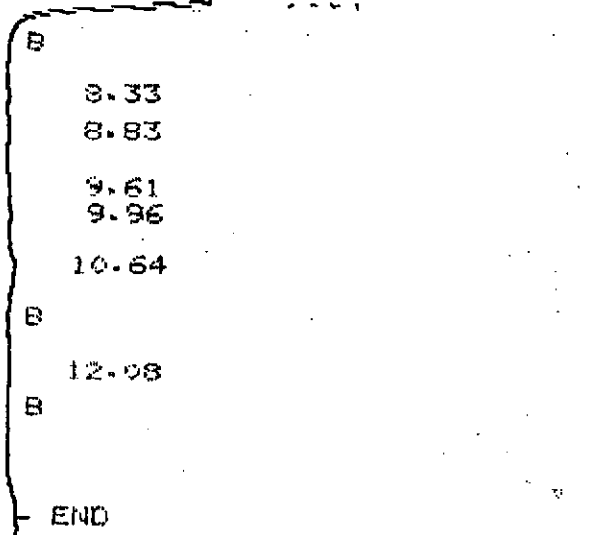
W 6



W 7



W 7



END

END

12 GROUP 1 PEAKS TOTAL AMOUNT 264.3653

MW-3 034375 (5ml)

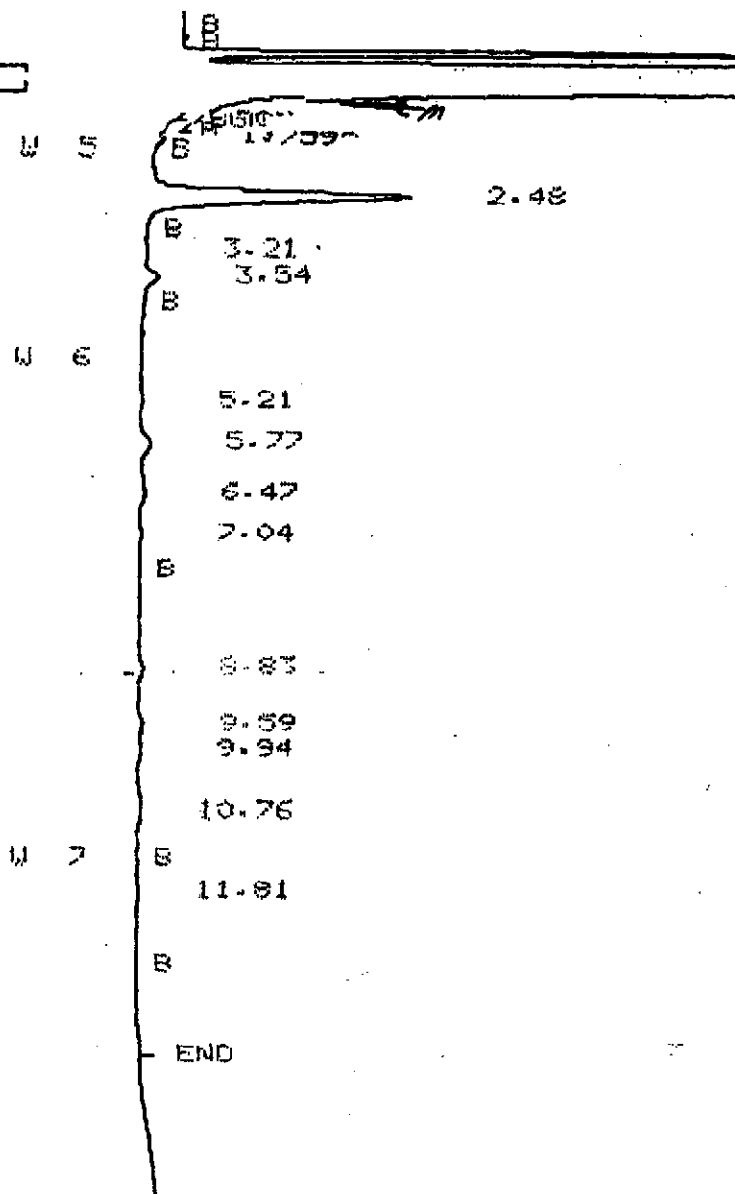
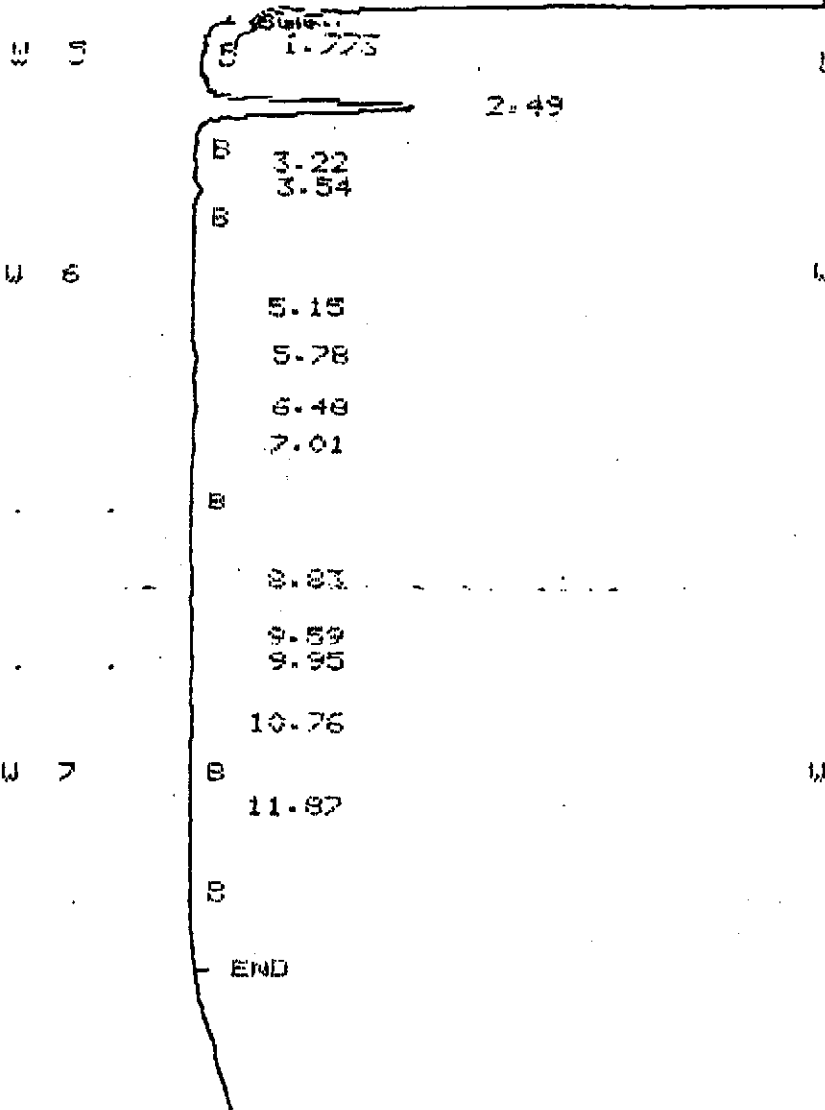
RUN 10 15:36 94/03/31

METHOD 3 P-T 8020-602

DETECTOR 1 ATTN 64

DETECTOR 2 ATTN 256

C 10



RUN 10 15:36 94/03/31

METHOD 3 P-T 8020-602 CALCULATION: EXT STD

DETECTOR 1

11 GROUP 1 PEAKS TOTAL AMOUNT 195.6296

DI-BUK

RUN 5 13:55 94/03/31

METHOD 3 P-T 8020-602

DETECTOR 1 ATTN 64

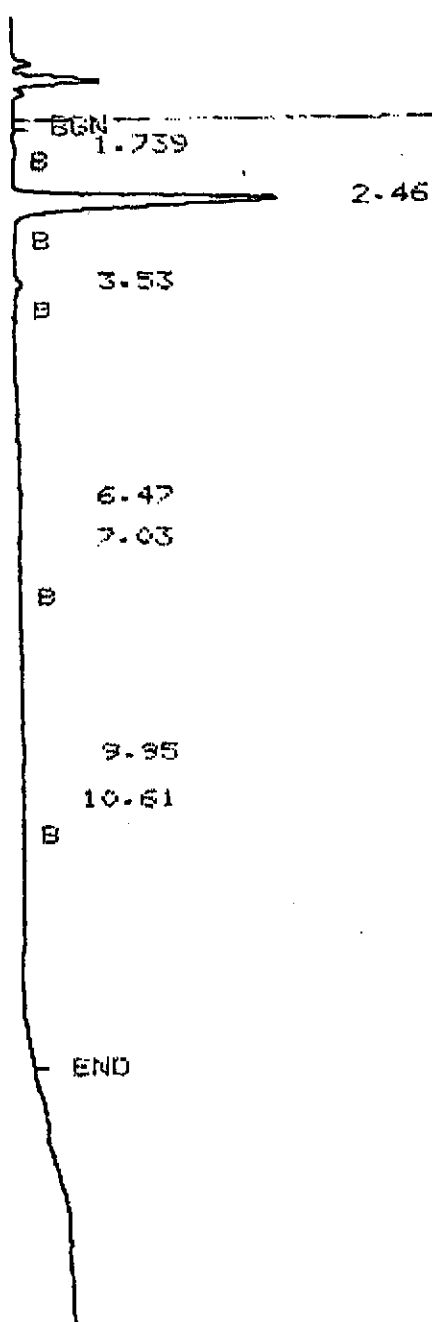
DETECTOR 2 ATTN 256

C 10

W 5

W 6

W 7



B

B

B

W 5

W 6

W 7

B

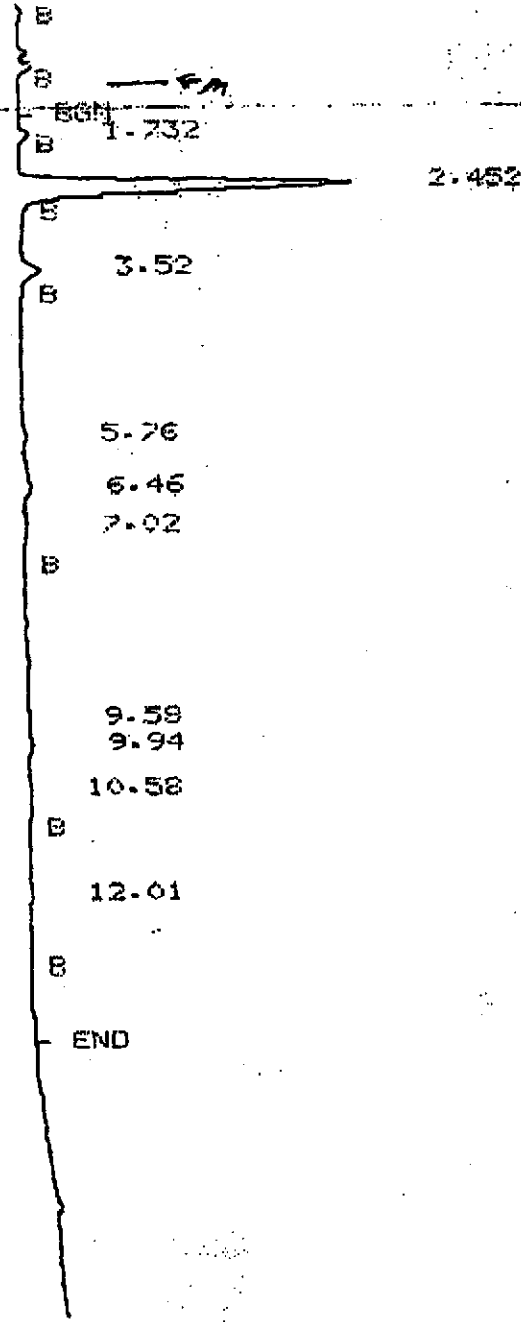
B

B

B

B

END



RUN 5 13:55 94/03/31

METHOD 3 P-T 8020-602 CALCULATION: EXT STD