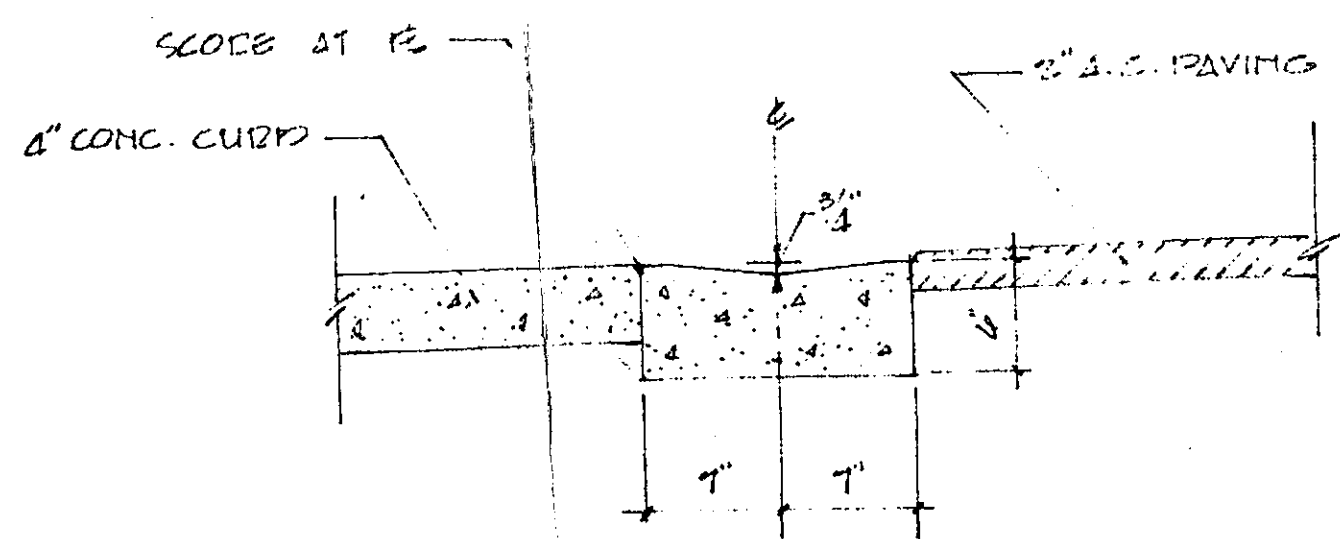


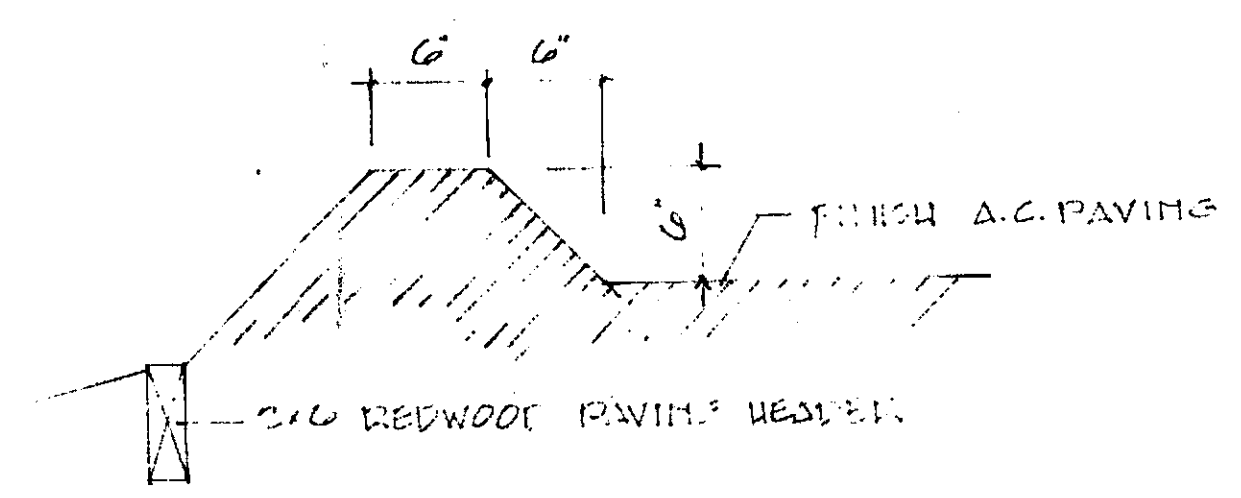
NOTE

1. FOR GEN'L NOTES SEE SCOPE OF WORK SH. T.



CONC. DRAIN TRENCH DETAIL

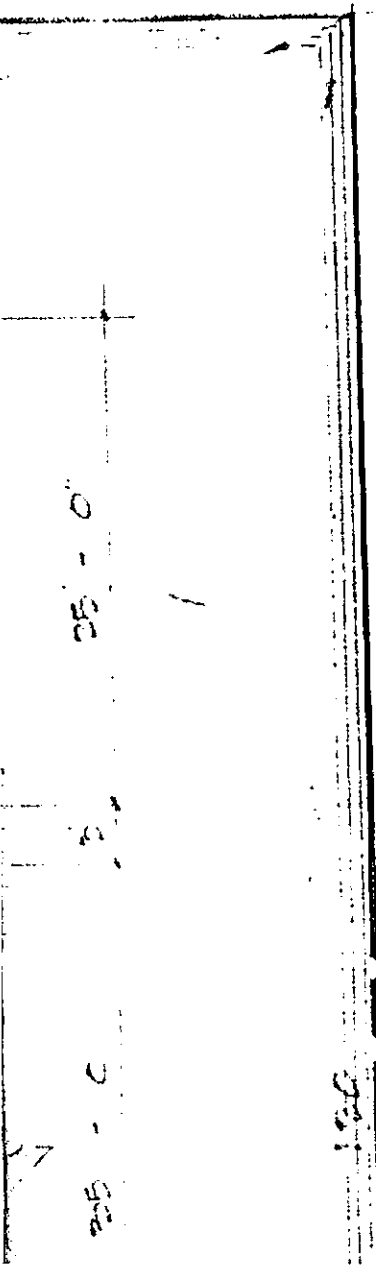
NO SCALE



A.C. DETAIL

NO SCALE

ENCL
SH. T.



PROPERTY →
SH. T.

711

VIA

GEN'L CONTR. TO REMOVE EXIST' DRIVEWAYS AS PER

10'-0" 2'-0"

2" A.C. PAVING ON A.C.P.D.

2-2" GASOLINE LINES W/ SW. JOINT AT TANK & DISPENSER

CONC. DRAIN TRENCH SEE DETAIL

5-15 WILSLICE 10 SIGN W/ 2-5'x7' PRICE SIGNS

NEW SIDEWALK 6'-30"

EXIST'G CURB AND GUTTER TO REMAIN

1 BOARD

CONC. DRAIN TRENCH SEE DETAIL

85'

GEN'L CONTR. TO REMOVE EXIST'G A.C. PAVEM

3'-0" 30'-0" 3'-0" 3'-6" 3'-6" 3'-0" 30'-0"

GEN'L CONTR. TO INSTALL NEW CONC. CURB GUTTER, SIDEWALK DRIVEWAYS AS PER LOC. REQ. SEE STREET IMPROVEMENT PLAN

WASHINGTON AVE.

27x55 STL. CANOPY

CASH BOX

SEL OIL SUP. CONTN

3/4" SLEEVE

A.W. REEL AT EACH END. (TYP.)

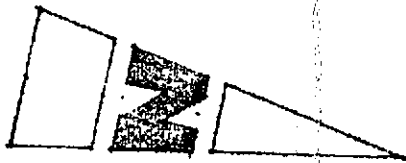
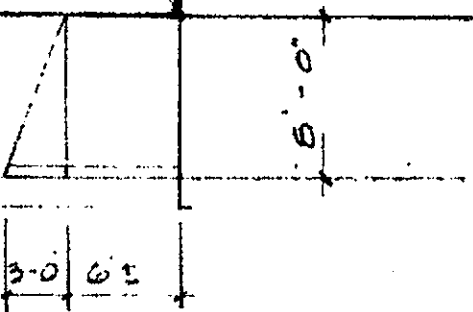
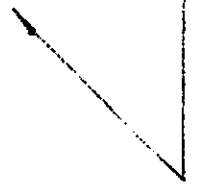
1/2" A.W. LINE TO EACH REEL (TYP.)

10'-0" 4'-0" 12'-6" 12'-6" 4'-0" 10'-0"

0'-0" 12'-0" 20'-0"

← A.C. PERM SEE DET.

SURF





NO.	REVISIONS	BY	APPR.
GULF OIL CORPORATION OF CALIFORNIA			
OPERATIONS DEPT. LOS ANGELES, CALIF.			
GENERAL ARRANGEMENT PLAN			
SERVICE STATION AT N.E. COR.			
WASHINGTON AVE AND VIA EMILIO			
ALAMEDA CO. CALIFORNIA			
DR. <u>K.T.</u> TR. _____ CH. _____ DES. ENG.			
APPROVED _____			S.S. # 1106
DATE <u>10-10-54</u>		SCALE <u>1"=40'-0"</u>	DWG. <u>6917</u>

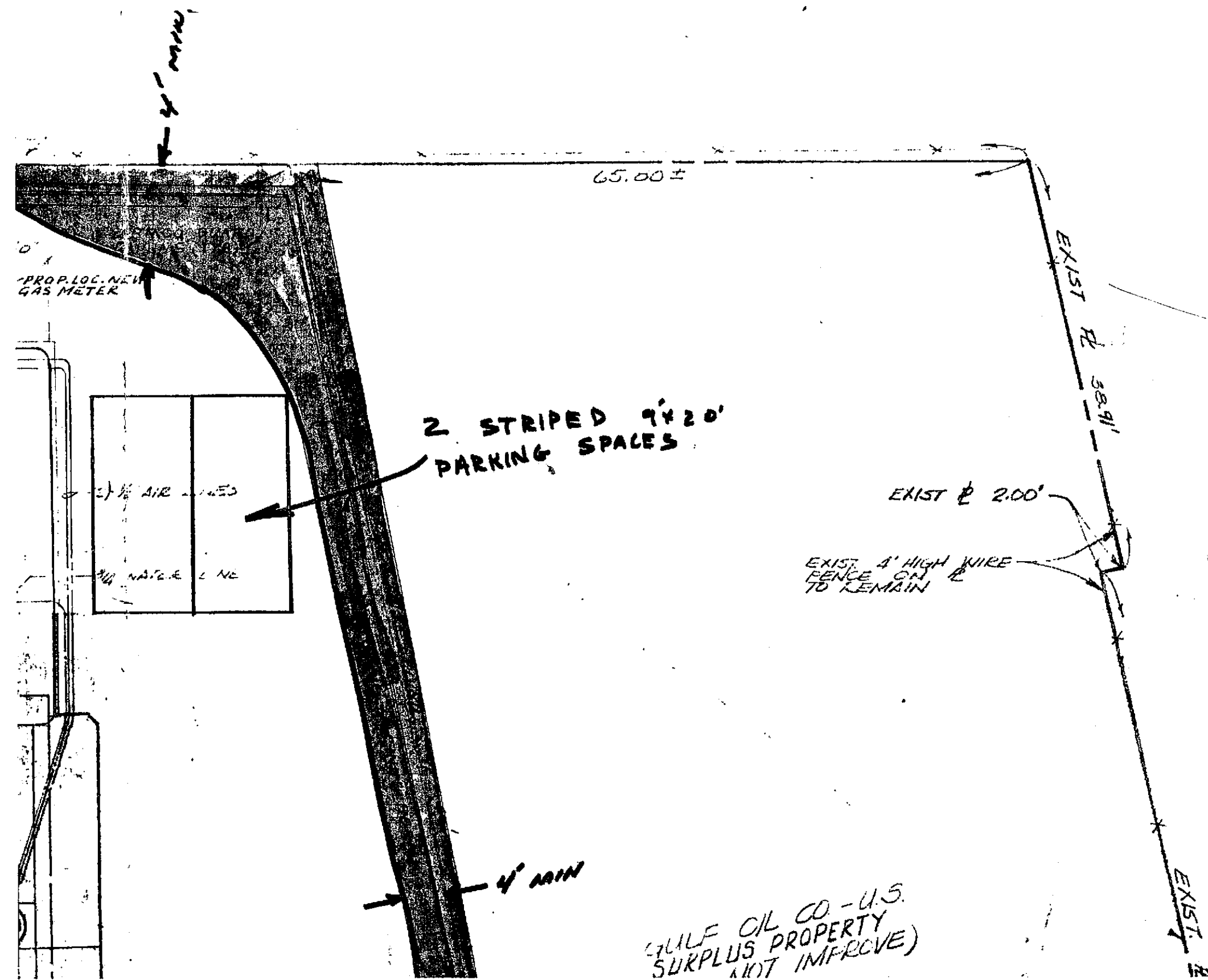
REFERENCE DRAWINGS

SH-1



NOTES :

1. For additional general notes, see standard drawing. 8203 JHT 1 & D-1106-G16
2. All new street work outside of property line to be done in accordance with governing authorities specifications.
3. All new concrete street work shown 
4. All new A/C street paving shown. 
5. Top of all submersible turbine pumps cannot be lower than 4" below finish yard grade.
6. I.D. sign must be flagged before installation by sign contractor with district manager and/or construction supervisor present and be responsible for same.
7. Hoist holes must be backfilled with clean, dry sand.
8. All concrete slabs for building, (exterior and interior) islands, tanks and trash enclosure must be reinforced with 6" x 6" 10 ga x 10 ga wire mesh.
9. General contractor to install "Echo Mountain Pink" stone veneer as produced and distributed by Western California 90058 (Mr. John Burman), Telephone: (213)-582-6117 cable "Kaibab."
10. Dimensions shown thus...(*) are very critical for the alignment of both building and canopy. General Contractor must hold to these dimensions.
11. All painting is to be performed as outlined in the new Gulf Oil co.--U.S. Painting and Color Guide (Western Region Section). Use paint scheme for "RANCH" style building.
12. BEFORE CONNECTING NEW 4" V.C. SEWER LINE TO EXIST. SEWER LATERAL GEN CONTR MUST FIELD CHECK EXIST. INVERT. ELEV. FOR FILLER. FILL IN.
13. GEN. CONTR. MUST REMOVE & ADAPT ALL EXIST. UTILITIES FOR NEW ELLG.



A/C YARD PAVING

25' x 52' STEEL CANOPY

MW-1

1/2" WATER LINE

CASH B OIL CABINETS

1 3 0 2 1 1 1

DS

6' MAX. DIA.

REMOVE EXIST. I.D. SIGN & PRICE PANELS & INSTALL NEW 10" GULF I.D. SIGN ON TOP OF EXIST. POLE & FOOTING.

AREA LIGHTS

6" A.C. PLANTER CURB 118.09'

PLANTER CURB (TYP)

6" CONC. PLANTER CURB DET'L'D ON DWG. B203 SHT. 11-A

ANTI-SYPHON VALVE

EXIST. CONC. SIDEWALK CURB & GUTTER
EXIST. CONC. CURB R=101'-5 1/2"
EXIST. CONC. CURB R=118'

EXTEND CONC. APPROACH 3'-0"

EXIST. CONC. APPROACH

EXIST. CONC. CURB & GUTTER

EXIST. R/W 184.92' EXIST. CONC. SIDEWALK

NEW CONC. SIDEWALK CURB

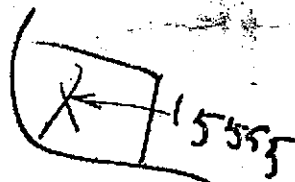
31'-0" ± NEW CONC. CURB

10'-6" ±

3'-0" PATCH A/C STREET PAVING

* 60'-0" TO C OF CANOPY COLUMN

15601

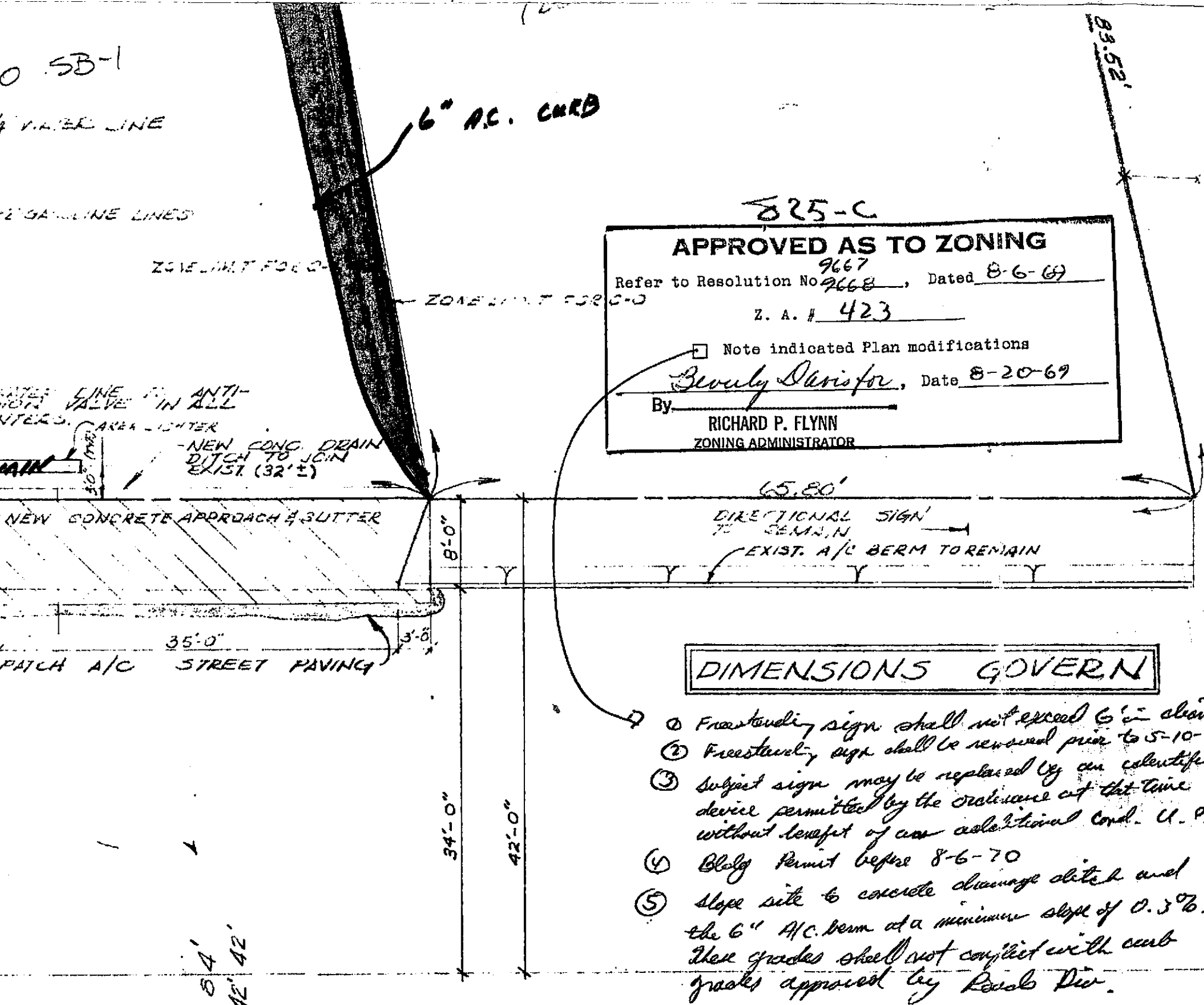


411-21-4

EXIST. A/C ST. PAVING

WASHINGTON AVE.

0 SB-1
 1/4 WATER LINE
 2" GAS LINE LINES



825-C

APPROVED AS TO ZONING

Refer to Resolution No. 9667, Dated 8-6-69
9668

Z. A. # 423

Note indicated Plan modifications

Bevoly Dvorin, Date 8-20-69

By RICHARD P. FLYNN
 ZONING ADMINISTRATOR

DIMENSIONS GOVERN

- ① Freestanding sign shall not exceed 6' in diameter
- ② Freestanding sign shall be removed prior to 5-10-72
- ③ Subject sign may be replaced by an identification device permitted by the ordinance at that time without benefit of an additional Cond. U. P.
- ④ Obtain Permit before 8-6-70
- ⑤ Slope site to concrete drainage ditch and the 6" A/C. berm at a minimum slope of 0.3%. These grades shall not conflict with curb grades approved by Public Div.

E-1106-C	12.3.0	Construction Drawings
8203	1	General Specifications
	2	Floor Plan
	2A & 2B	Elevations
	3	Concrete Floor Plan and Details
	3A	Fig. Layout
	4	Standard Concrete Details
	5	Plumbing Plan
	5A	Rest Room Interiors
	7	Electrical Plan
	7A	Wiring Diagram
	10	U. G. Tanks, Turbines and Dispa.
	11A/A	Miscellaneous Details
B148	4	Heating/Cooling Standard (PLAN "H")
B289	1-2	Shelving and Cabinet Details
B236	1	10" Dia. I. D. Sign Standard
		16" Dia. I. D. Sign Standard
		6" Dia. I. D. Sign Standard
DWG. #	SHT. #	REFERENCE DWGS.

NO.	REVISIONS	BY	APPR.
GULF OIL COMPANY - U.S.			
WESTERN REGION - LOS ANGELES, CALIF. OPERATIONS DEPARTMENT			
GENERAL ARRANGEMENT PLAN SERVICE STATION @ N.W. COR. OF WASHINGTON AVE. & VIA ENRICO ST. SAN LORENZO, CALIFORNIA			
DR. <u>RON</u>	CH. <u>GLENN</u>	DES. ENG.	
APPROVED			S.S. 1106
DATE <u>8-1-69</u>	SCALE <u>1" = 10'</u>	DWG. <u>E-1106-C/1</u>	

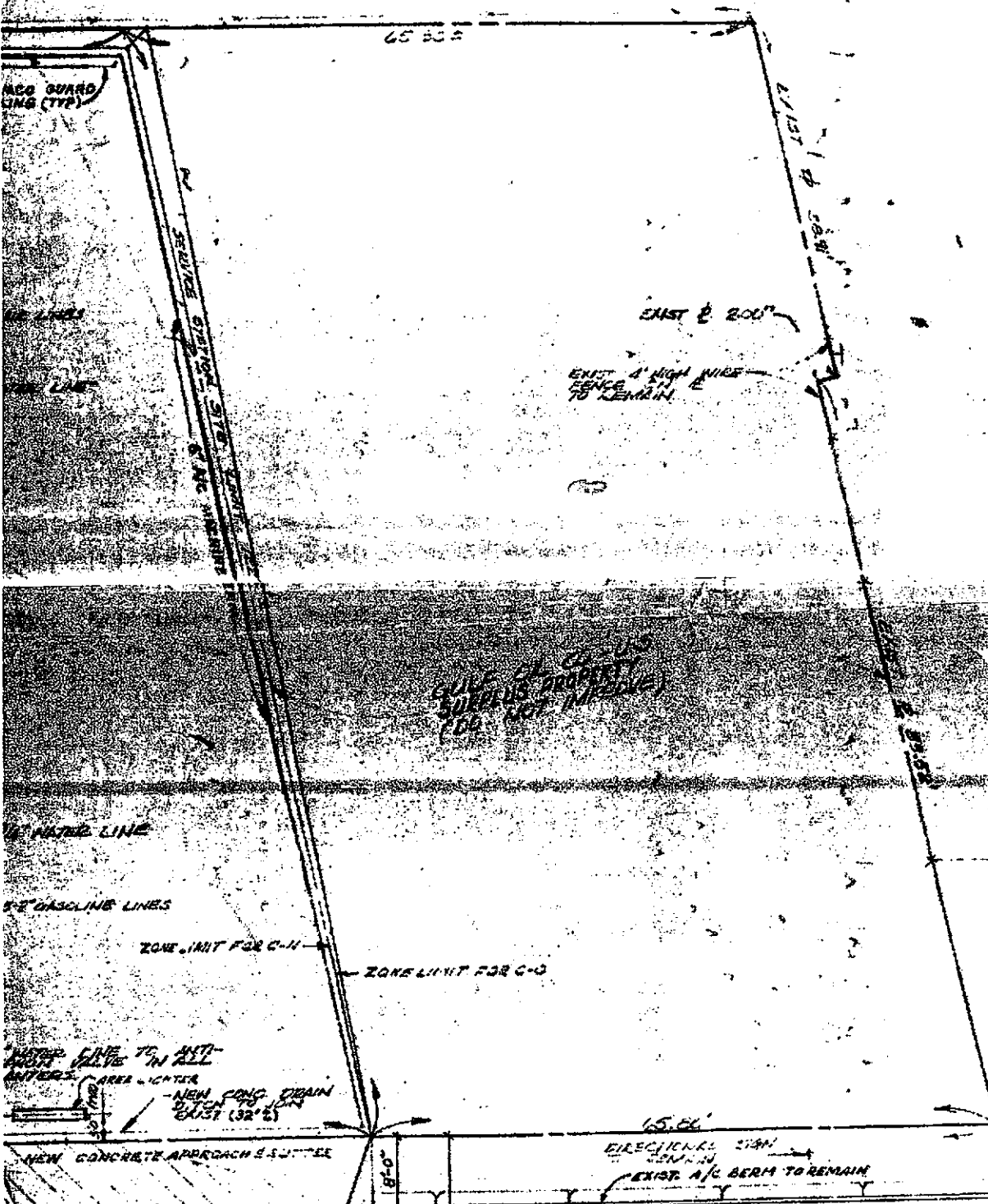
PROS. E. & P. 5089

GG



NOTES:

1. All work to be done in accordance with the specifications and drawings.
2. General contractor to obtain all necessary permits and licenses.
3. All materials to be of the highest quality and approved by the engineer.
4. All work to be completed within the specified time schedule.
5. All work to be done in accordance with the safety rules and regulations.
6. All work to be done in accordance with the environmental regulations.
7. All work to be done in accordance with the fire safety regulations.
8. All work to be done in accordance with the health and safety regulations.
9. All work to be done in accordance with the electrical safety regulations.
10. All work to be done in accordance with the plumbing safety regulations.
11. All work to be done in accordance with the mechanical safety regulations.
12. All work to be done in accordance with the structural safety regulations.
13. All work to be done in accordance with the civil engineering safety regulations.
14. All work to be done in accordance with the chemical safety regulations.
15. All work to be done in accordance with the biological safety regulations.
16. All work to be done in accordance with the geological safety regulations.
17. All work to be done in accordance with the atmospheric safety regulations.
18. All work to be done in accordance with the hydrological safety regulations.
19. All work to be done in accordance with the oceanographic safety regulations.
20. All work to be done in accordance with the limnological safety regulations.
21. All work to be done in accordance with the biogeographical safety regulations.
22. All work to be done in accordance with the paleontological safety regulations.
23. All work to be done in accordance with the archaeological safety regulations.
24. All work to be done in accordance with the geological safety regulations.
25. All work to be done in accordance with the paleontological safety regulations.
26. All work to be done in accordance with the archaeological safety regulations.
27. All work to be done in accordance with the geological safety regulations.
28. All work to be done in accordance with the paleontological safety regulations.
29. All work to be done in accordance with the archaeological safety regulations.
30. All work to be done in accordance with the geological safety regulations.
31. All work to be done in accordance with the paleontological safety regulations.
32. All work to be done in accordance with the archaeological safety regulations.
33. All work to be done in accordance with the geological safety regulations.
34. All work to be done in accordance with the paleontological safety regulations.
35. All work to be done in accordance with the archaeological safety regulations.
36. All work to be done in accordance with the geological safety regulations.
37. All work to be done in accordance with the paleontological safety regulations.
38. All work to be done in accordance with the archaeological safety regulations.
39. All work to be done in accordance with the geological safety regulations.
40. All work to be done in accordance with the paleontological safety regulations.
41. All work to be done in accordance with the archaeological safety regulations.
42. All work to be done in accordance with the geological safety regulations.
43. All work to be done in accordance with the paleontological safety regulations.
44. All work to be done in accordance with the archaeological safety regulations.
45. All work to be done in accordance with the geological safety regulations.
46. All work to be done in accordance with the paleontological safety regulations.
47. All work to be done in accordance with the archaeological safety regulations.
48. All work to be done in accordance with the geological safety regulations.
49. All work to be done in accordance with the paleontological safety regulations.
50. All work to be done in accordance with the archaeological safety regulations.



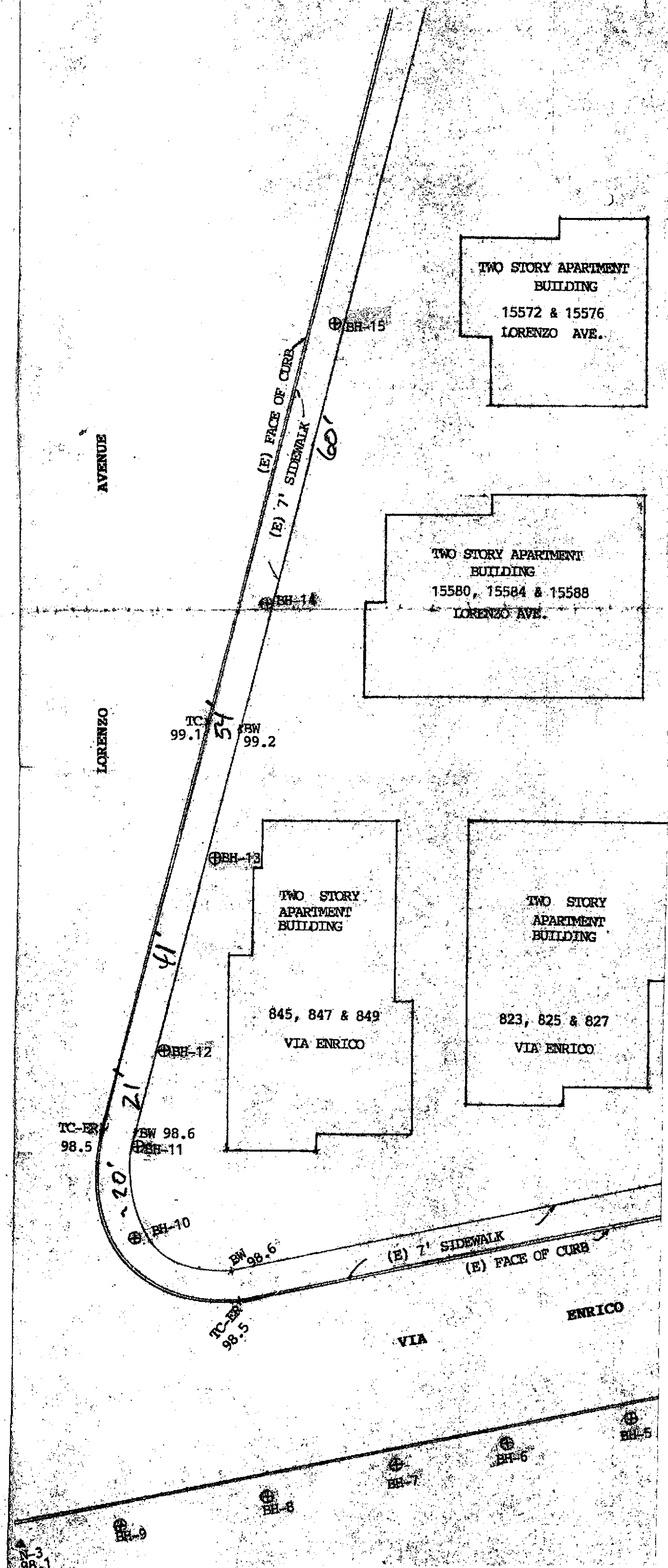
NO.	REV.	DESCRIPTION
1	1	Construction Drawings
2	1	Floor Plan
3	1	Elevations
4	1	Concrete Floor Plan and Details
5	1	Site Layout
6	1	Standard Concrete Details
7	1	Plumbing Plan
8	1	Rest Room Interiors
9	1	Electrical Plan
10	1	Wiring Diagram
11	1	G. G. Tanks, Baffles and Depts
12	1	Miscellaneous Details
13	1	Heating/Cooling Standard (PLAN)
14	1	Shelving and Cabinet Details
15	1	Site Plan
16	1	Site Plan
17	1	Site Plan
18	1	Site Plan
19	1	Site Plan
20	1	Site Plan
21	1	Site Plan
22	1	Site Plan
23	1	Site Plan
24	1	Site Plan
25	1	Site Plan
26	1	Site Plan
27	1	Site Plan
28	1	Site Plan
29	1	Site Plan
30	1	Site Plan
31	1	Site Plan
32	1	Site Plan
33	1	Site Plan
34	1	Site Plan
35	1	Site Plan
36	1	Site Plan
37	1	Site Plan
38	1	Site Plan
39	1	Site Plan
40	1	Site Plan
41	1	Site Plan
42	1	Site Plan
43	1	Site Plan
44	1	Site Plan
45	1	Site Plan
46	1	Site Plan
47	1	Site Plan
48	1	Site Plan
49	1	Site Plan
50	1	Site Plan

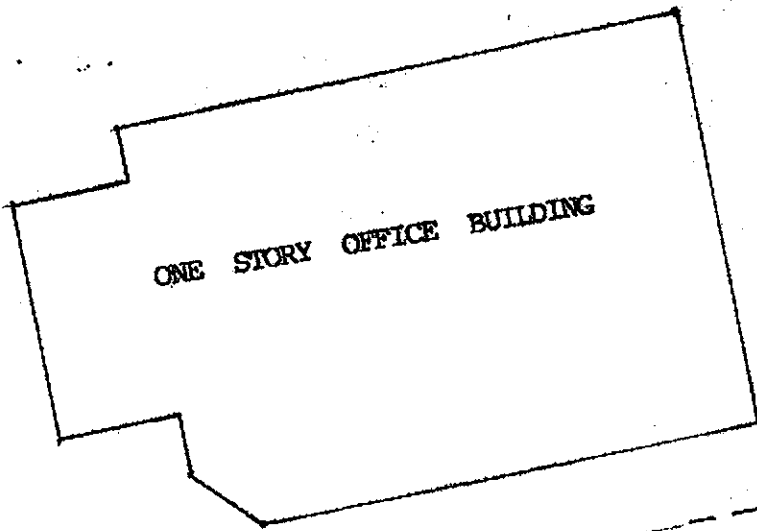
DIMENSIONS GOVERN

NO.	REVISIONS	BY	APPR.
GULF OIL COMPANY - U.S. WESTERN REGION - LOS ANGELES, CALIF. OPERATIONS DEPARTMENT			
GENERAL ARRANGEMENT PLAN SERVICE STATION @ N.W. COR. OF WASHINGTON AVE. & 1/4 ENRIQUEZ ST. SAN LORENZO, CALIFORNIA			
DR.	CH. GLEN	DES. ENG.	
APPROVED		8	8.8.1.06
DATE	4-1-69	SCALE	1" = 10'
DWG. D-110-12-1			

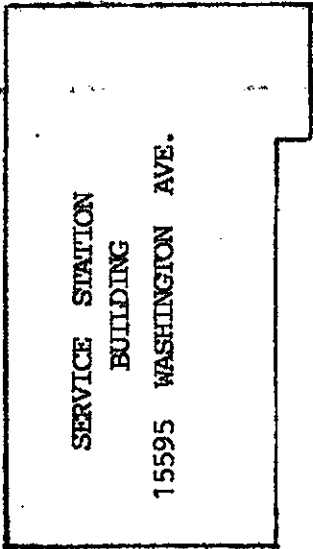
DATE 5-6-69

MW MONITORING WELL
BH BORE HOLE





ONE STORY OFFICE BUILDING



SERVICE STATION BUILDING
15595 WASHINGTON AVE.

FC/COR
101.9

(E) FENCE & PROP. LINE

MW-4
101.08

TC
100.5

BW
100.4

AVENUE

MW-5
101.54

N-1
100.4

(E) FENCE & PROP. LINE

MW-1
100.73

(E) 7' SIDEWALK

FACE OF CURB

WASHINGTON

MW-3
100.24

BW
100.1

TC-ER
100.00 TBM
(ASSUMED ELEVATION)

MW-2
99.62

TC
99.7

BW
99.5

N-2

TC-ER
99.4

BW
99.2

TC
99.1

STREET

BH-4

BH-3

BH-2

BH-1

MONITORING WELL LOCATIONS
15595 WASHINGTON AVENUE
SAN LORENZO, CALIFORNIA

SCALE: 1"=20' JUNE 10, 2000