

facsimile transmittal

To: Scott Forbes *Sequoia Labs* Fax: (707)792-0342  
From: Scott Seery *705* Date: 03/18/99  
Re: 15595 Washington Bl., San Lorenzo Pages: 5  
CC: Karen Petryna, Equiva Services LLC (559) 645-5643

Urgent     For Review     Please Comment     Please Reply     Please Recycl

Scott

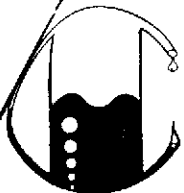
Thanks in advance for your help. Attached are copies of the most recent lab data (1994) before the project was resurrected in 1998. You said these reports may prove useful to you in deciding just how low a detection limit your equipment could safely handle in evaluating the presence of the other fuel analytes (TPH,BTEX).

You'll see that Mobil Chem Labs (MCL) did the 1994 work, and that the detection limits were pretty normal at that time. MtBE was not being reported back then. I spoke with MCL's lab director, Ron Evans (925-945-1266), today, and asked that he review the chromatograms for that data set to see whether it appeared MtBE was present.

So between the two labs, I should be able to get a forensic handle on the release history at this site.

Please call me at (510) 567-6783 if there is anything else I can provide to aid you. Thanks again!

Scott



# MOBILE CHEM LABS INC.

5011 Blum Road, Suite 1 • Martinez, CA 94553  
Phone (510) 372-3700 • Fax (510) 372-6955

624880329\1428\013405

Texaco Environmental Services  
108 Cutting Blvd.  
Richmond, CA 94804  
Attn: Rebecca Digerness  
Environmental Technician

Date Sampled: 03-24-94  
Date Received: 03-25-94  
Date Analyzed: 03-31-94

Sample Number

034373

Sample Description

Texaco - San Lorenzo  
15595 Washington  
MW-1 WATER

ANALYSIS

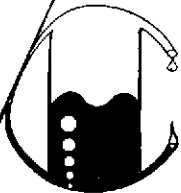
	Detection Limit	Sample Results
	ppb	ppb
Total Petroleum Hydrocarbons as Gasoline	50	1,300
Benzene	0.5	110
Toluene	0.5	<0.5
Xylenes	0.5	<0.5
Ethylbenzene	0.5	19

QA/QC: Duplicate Deviation is 9.2%

Note: Analysis was performed using EPA methods 5030 and TPH  
LUFT with method 602 used for BTX distinction.  
(ppb) = (µg/L)

MOBILE CHEM LABS

Ronald G. Evans  
Lab Director



# MOBILE CHEM LABS INC.

5011 Blum Road, Suite 1 • Martinez, CA 94553  
Phone (510) 372-3700 • Fax (510) 372-6955

624880329\1428\013405

Texaco Environmental Services  
108 Cutting Blvd.  
Richmond, CA 94804  
Attn: Rebecca Digerness  
Environmental Technician

Date Sampled: 03-24-94  
Date Received: 03-25-94  
Date Analyzed: 03-31-94

Sample Number

034374

Sample Description

Texaco - San Lorenzo  
15595 Washington  
MW-2 WATER

ANALYSIS

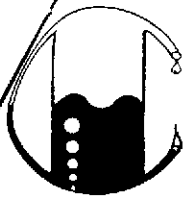
	<u>Detection Limit</u>	<u>Sample Results</u>
	ppb	ppb
Total Petroleum Hydrocarbons as Gasoline	50	<50
Benzene	0.5	<0.5
Toluene	0.5	<0.5
Xylenes	0.5	<0.5
Ethylbenzene	0.5	<0.5

QA/QC: Spike Recovery is 78%

Note: Analysis was performed using EPA methods 5030 and TPH  
LUFT with method 602 used for BTX distinction.  
(ppb) = (µg/L)

MOBILE CHEM LABS

Ronald G. Evans  
Lab Director



# MOBILE CHEM LABS INC.

5011 Blum Road, Suite 1 • Martinez, CA 94553  
Phone (510) 372-3700 • Fax (510) 372-6955

624880329\1428\013405

Texaco Environmental Services  
108 Cutting Blvd.  
Richmond, CA 94804  
Attn: Rebecca Digerness  
Environmental Technician

Date Sampled: 03-24-94  
Date Received: 03-25-94  
Date Analyzed: 03-31-94

Sample Number

034375

Sample Description

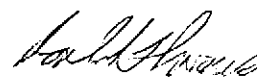
Texaco - San Lorenzo  
15595 Washington  
MW-3 WATER

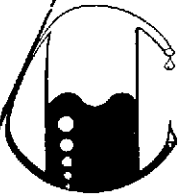
ANALYSIS

	Detection Limit	Sample Results
	ppb	ppb
Total Petroleum Hydrocarbons as Gasoline	50	<50
Benzene	0.5	<0.5
Toluene	0.5	<0.5
Xylenes	0.5	<0.5
Ethylbenzene	0.5	<0.5

Note: Analysis was performed using EPA methods 5030 and TPH  
LUFT with method 602 used for BTX distinction.  
(ppb) = ( $\mu\text{g/L}$ )

MOBILE CHEM LABS

  
Ronald G. Evans  
Lab Director



# MOBILE CHEM LABS INC.

5011 Blum Road, Suite 1 • Martinez, CA 94553  
Phone (510) 372-3700 • Fax (510) 372-6955

624880329\1428\013405

Texaco Environmental Services  
108 Cutting Blvd.  
Richmond, CA 94804  
Attn: Rebecca Digerness  
Environmental Technician

Date Sampled: 03-24-94  
Date Received: 03-25-94  
Date Analyzed: 03-31-94

Sample Number

034376

Sample Description

Texaco - San Lorenzo  
1595 Washington  
EB WATER

ANALYSIS

	<u>Detection Limit</u>	<u>Sample Results</u>
	ppb	ppb
Total Petroleum Hydrocarbons as Gasoline	50	<50
Benzene	0.5	<0.5
Toluene	0.5	<0.5
Xylenes	0.5	<0.5
Ethylbenzene	0.5	<0.5

Note: Analysis was performed using EPA methods 5030 and TPH  
LUFT with method 602 used for BTX distinction.  
(ppb) = ( $\mu\text{g/L}$ )

MOBILE CHEM LABS

Ronald G. Evans  
Lab Director



# MOBILE CHEM LABS INC.

5011 Blum Road, Suite 1 • Martinez, CA 94553  
Phone (510) 372-3700 • Fax (510) 372-6955

624880329\1428\013405

Texaco Environmental Services  
108 Cutting Blvd.  
Richmond, CA 94804  
Attn: Rebecca Digerness  
Environmental Technician

Date Sampled: 03-24-94  
Date Received: 03-25-94  
Date Analyzed: 03-31-94

Sample Number

034377

Sample Description

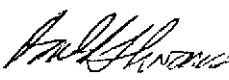
Texaco - San Lorenzo  
15595 Washington  
TB WATER

ANALYSIS

	Detection Limit	Sample Results
	ppb	ppb
Total Petroleum Hydrocarbons as Gasoline	50	<50
Benzene	0.5	<0.5
Toluene	0.5	<0.5
Xylenes	0.5	<0.5
Ethylbenzene	0.5	<0.5

Note: Analysis was performed using EPA methods 5030 and TPH  
LUFT with method 602 used for BTX distinction.  
(ppb) = ( $\mu\text{g/L}$ )

MOBILE CHEM LABS

  
Ronald G. Evans  
Lab Director