

January 21, 2003

Ted Klenk  
 City of Pleasanton Fire Department  
 4444 Railroad Street  
 Pleasanton, California 94566

Re: **Dispenser and Piping Upgrade Soil Sampling Report**  
 Shell-branded Service Station  
 3790 Hopyard Road  
 Pleasanton, California  
 Incident #: 98995842  
 Project #: 205-0497-002

Alameda County  
 Environmental Health  
 JAN 28 2003



Dear Mr. Klenk:

On behalf of Equilon Enterprises LLC dba Shell Oil Products US, Cambria Environmental Technology, Inc. (Cambria) is submitting this *Dispenser and Piping Upgrade Soil Sampling Report* presenting the results of sampling conducted during station upgrade activities at the referenced site. Presented below are a summary of the site conditions, sampling activities and analytical results.

## SITE CONDITIONS

**Location:** The site is an active Shell-branded service station located at the intersection of Hopyard Road and West Las Positas Boulevard in Pleasanton, California (Figure 1). The area surrounding the site is mixed residential and commercial.

**Upgrade Activities:** Fuel system equipment at this Shell-branded service station was recently upgraded by Paradiso Mechanical, Inc. (Paradiso) of San Leandro, California. Paradiso replaced and upgraded the fuel dispensers and product, vapor and vent lines. Additionally, Paradiso added dispenser pans under the new dispensers and replaced the underground storage tank (UST) fuel fill port sumps and all associated piping in the tank pit area above the USTs.

Oakland, CA  
 San Ramon, CA  
 Sonoma, CA

## SAMPLING ACTIVITIES AND SAMPLE ANALYSIS

Cambria  
 Environmental  
 Technology, Inc.

**Personnel Present:** Jason Gerke, Staff Geologist, Cambria  
 Mark Freitas, Construction Foreman, Paradiso

1144 65th Street  
 Suite B  
 Oakland, CA 94608  
 Tel (510) 420-0700  
 Fax (510) 420-9170

*Sample Date:* July 27, 2002.

*Sampling Requirements:* Cambria collected soil samples 1 to 2 feet within native soil beneath each dispenser and beneath every 20 feet of product piping (Figure 2). Paradiso scheduled an inspector from the Pleasanton Fire Department (PFD) for the early afternoon of July 27, 2002 to be present during the sampling activities. A PFD representative did not arrive at the site on July 27, 2002. Cambria proceeded with sampling in the late afternoon after Paradiso was unable to contact a PFD inspector. Mr. Mark Freitas reported to Cambria that a message was left with the PFD that Cambria would proceed with sampling, and that a sampling summary report would be submitted to the PFD unless otherwise requested.



*Dispenser and Pipeline Sampling:* One soil sample was collected beneath each of four removed dispensers (D-1 through D-4) and three soil samples (P-1 through P-3) were collected beneath piping removed (Figure 2). All soil samples were collected between 3.5 and 4.0 feet below grade (fbg). Cambria's standard procedures for dispenser and piping removal sampling are presented as Attachment A.

*Sample Analyses:* State-certified laboratory Kiff Analytical LLC of Davis, California analyzed the soil samples for total petroleum hydrocarbons as gasoline (TPHg), benzene, toluene, ethylbenzene and xylenes (BTEX), and methyl tertiary butyl ether (MTBE) by EPA Method 8260B. Soil analytical results are summarized in Table 1, and presented as Attachment B.

*Waste Handling:* Cambria inspected and sampled approximately 200 cubic yards of pea gravel stockpile generated from the dispenser, pipeline and upper tank pit area excavations. Cambria obtained one four-point composite sample for waste characterization and analyzed the sample for TPHg, BTEX, MTBE by EPA Method 8260B and for total threshold limit concentration lead. The stockpile was transported on August 15, 2002 to Forward Landfill in Manteca, California for disposal. A copy of the soil disposal confirmation is included as Attachment C.

## ANALYTICAL RESULTS

Hydrocarbons were detected in four of the seven soil samples collected. Maximum concentrations of 260 parts per million (ppm) TPHg and 0.079 ppm benzene were both detected in sample P-1 at 3.5 fbg. MTBE was not detected in any samples collected. Soil analytical results are summarized in Table 1, and the laboratory report is included as Attachment B.

The site is currently involved in ongoing investigation directed by the Alameda County Health Care Services Agency. Several active groundwater monitoring wells currently exist at the site, and the groundwater is monitored on a quarterly basis. The downgradient extent of TPHg and benzene in groundwater is defined by monitoring wells S-5, S-6, S-7, S-9, S-10, S-11 and S-12. In addition, permitting for the installation of a fixed groundwater extraction system is currently being conducted at the site.

**CLOSING**

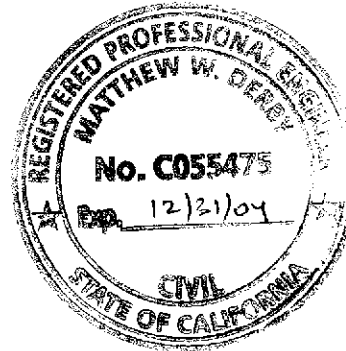


Please call Jacquelyn Jones at (510) 420-3316 if you have any questions or comments.

Sincerely,  
**Cambria Environmental Technology, Inc.**

Jacquelyn L. Jones  
Project Geologist

Matthew W. Derby, P.E.  
Senior Project Engineer

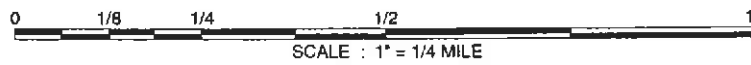
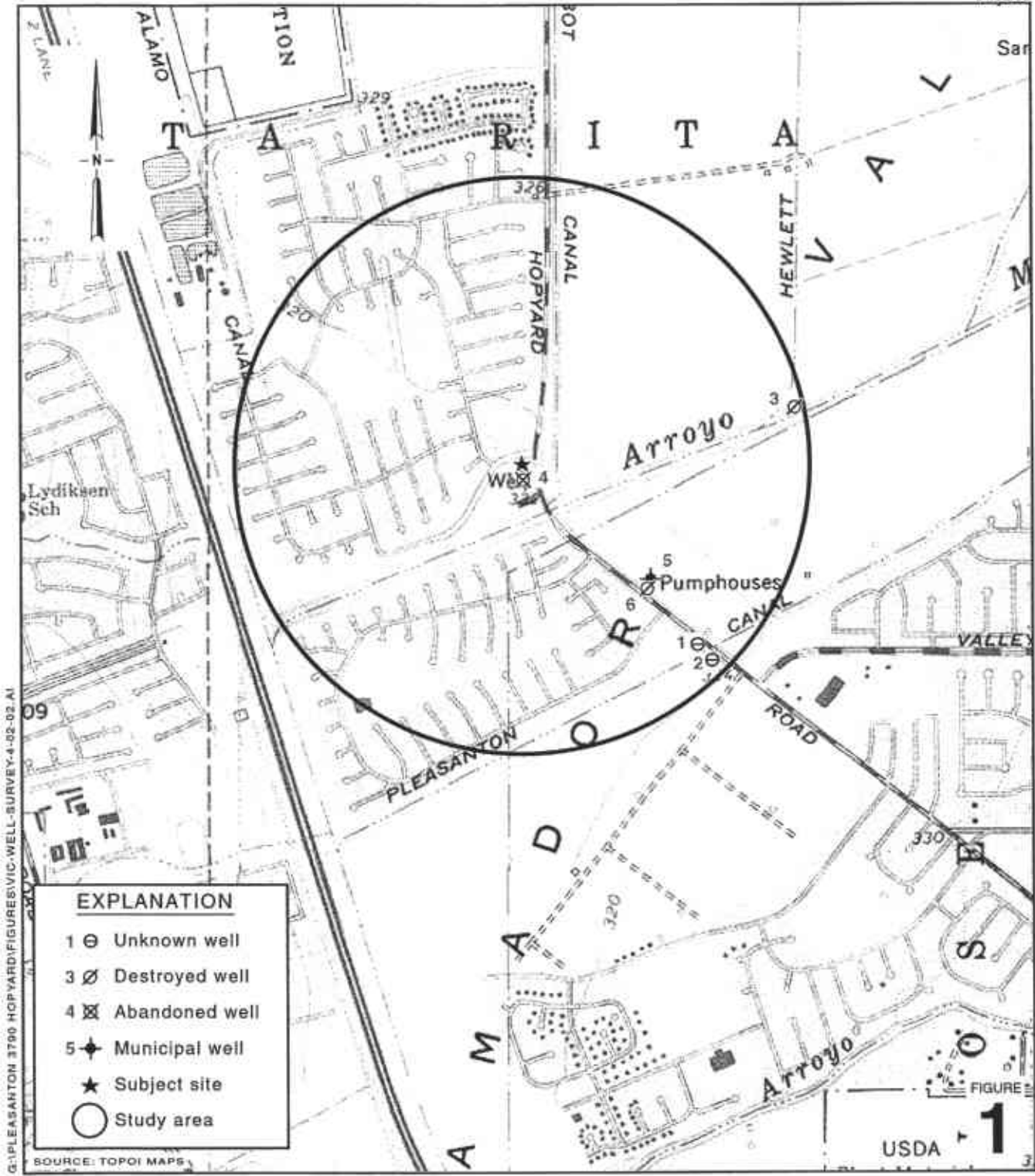


Figures: 1 - Vicinity /Area Well Survey Map  
2 - Soil Sample Location Map

Table: 1 - Soil Analytical Results

Attachments: A - Standard Piping and Dispenser Removal Sampling Procedures  
B - Laboratory Analytical Data  
C - Soil Disposal Confirmation

cc: Karen Petryna, Shell Oil Products US, P.O. Box 7869, Burbank, CA 91510-7869  
Perry Pineda, Shell Oil Products US, 1926 Contra Costa Blvd #166 Pleasant Hill,  
CA 94523  
Bill Stiles, 516 McGrath Court, Pleasant Hill, CA 94523  
Carol Mahoney, 5997 Parkside Drive, Pleasanton, CA 94588-5127  
S [REDACTED]



### Shell-branded Service Station

3790 Hopyard Road  
 Pleasanton, California  
 Incident #98995842



C A M B R I A

### Vicinity/Area Well Survey Map

1/2 Mile Radius

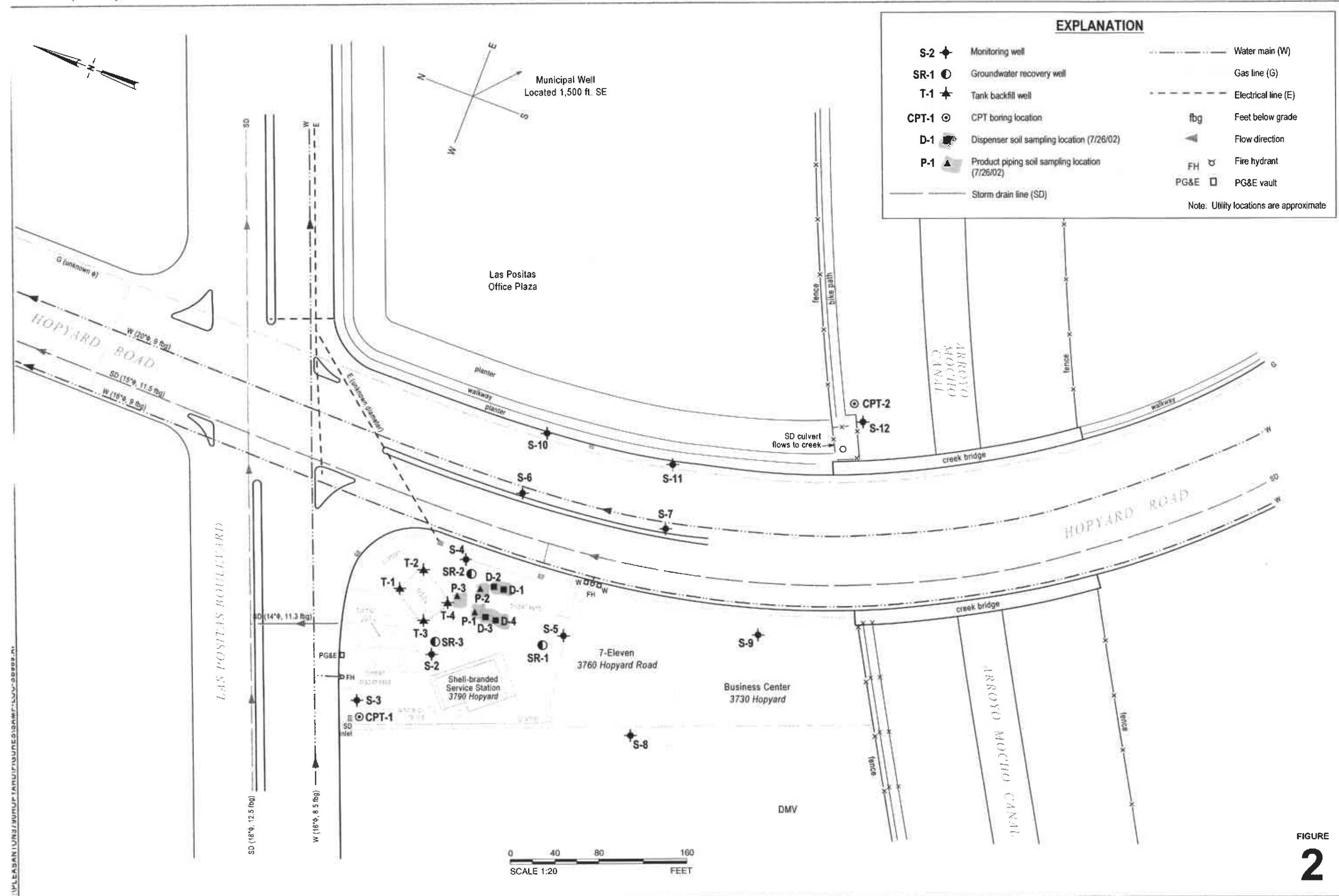


FIGURE  
**2**

S:\PLEASANTON\3790\3790\TARU\FIGURES\DRAWING\DWG-00202.DWG

# CAMBRIA

**Table 1. Soil Analytical Results - Shell-branded Service Station -3790 Hopyard Road, Pleasanton, California - Incident # - 98995842**

Sample ID	Date	Depth (feet below grade)	TPHg	MTBE	Benzene				Xylenes
					Toluene	Ethylbenzene	(ppm)		
D-1	July 26, 2002	3.5	<1.0	<0.5	<0.005	<0.005	<0.005	<0.005	
D-2	July 26, 2002	3.5	<1.0	<0.5	<0.005	<0.005	<0.005	<0.005	
D-3	July 26, 2002	3.5	4.0	<0.5	<0.005	<0.005	0.012	0.011	
D-4	July 26, 2002	3.5	1.8	<0.5	<0.005	<0.005	0.053	0.018	
P-1	July 26, 2002	3.5	260	<0.5	0.079	0.072	0.48	1.1	
P-2	July 26, 2002	3.5	<1.0	<0.5	<0.005	<0.005	<0.005	<0.005	
P-3	July 26, 2002	3.5	10	<0.5	0.0083	<0.005	0.26	<0.005	

**Notes and Abbreviations:**

TPHg = Total petroleum hydrocarbons as gasoline, analyzed by EPA Method 8260B

MTBE = Methyl tert-butyl ether, analyzed by EPA Method 8260B

Benzene, ethylbenzene, toluene, xylenes, analyzed by EPA Method 8260B

ppm = parts per million

<X = Below laboratory detection limit of X

## **ATTACHMENT A**

Standard Piping and Dispenser Removal Sampling Procedures

# CAMBRIA

## STANDARD PIPING AND DISPENSER REMOVAL SAMPLING PROCEDURES

Cambria Environmental Technology, Inc. (Cambria) has developed standard operating procedures for collecting soil samples during petroleum dispenser and piping removal. These procedures ensure that the samples are collected, handled, and documented in compliance with California Administration Code Title 23: Waters; Chapter 3: Water Resources Control Board; Subchapter 16: Underground Storage Tank Regulations (Title 23). Cambria's sampling procedures are based on guidelines contained in the California State Regional Water Quality Control Board Tri-Regional Staff Recommendations for Preliminary Evaluation and Investigation of Underground Tank Sites dated August 10, 1990.

### Piping and Dispenser Removal Sampling

The objective of sample collection during routine dispenser and piping removals is to determine whether hydrocarbons or other stored chemicals have been released to the subsurface. ~~We collect one soil sample from the native soil beneath each dispenser unit, at each piping elbow, and at every 20 ft of product piping, as applicable.~~

The soil samples are collected in steam cleaned brass or steel tubes from either a driven split-spoon type sampler or the bucket of a backhoe. When a backhoe is used, approximately three inches of soil are scraped from the surface and the tube is driven into the exposed soil.

Upon removal from the split-spoon sampler or the backhoe, the samples are trimmed flush, capped with Teflon sheets and plastic end caps, labeled, logged and refrigerated for delivery under chain of custody to a State certified analytic laboratory.



**ATTACHMENT B**

Laboratory Analytical Data



Report Number : 27733

Date : 8/6/02

Jacquelyn Jones  
Cambria Environmental Technology, Inc.  
1144 65th Street, Suite B  
Oakland, CA 94608

Subject : 2 Water Samples and 7 Soil Samples  
Project Name : 3790 Hopyard Road, Pleasanton  
Project Number : 244-0497  
P.O. Number : 98995842

Dear Ms. Jones,

Chemical analysis of the samples referenced above has been completed. Summaries of the data are contained on the following pages. Sample(s) were received under documented chain-of-custody. US EPA protocols for sample storage and preservation were followed.

Kiff Analytical is certified by the State of California (# 2236). If you have any questions regarding procedures or results, please call me at 530-297-4800.

Sincerely,

A handwritten signature in black ink that reads "Joel Kiff". The signature is written in a cursive style with a large initial "J".

Joel Kiff



Report Number : 27733

Date : 8/6/02

Subject : 2 Water Samples and 7 Soil Samples  
Project Name : 3790 Hopyard Road, Pleasanton  
Project Number : 244-0497  
P.O. Number : 98995842

## Case Narrative

Matrix Spike/Matrix Spike Duplicate Results associated with samples P-2, D-4, P-3, D-3, D-1, P-1 for the analyte Methyl-t-butyl ether were affected by the analyte concentrations already present in the un-spiked sample.

Approved By:  \_\_\_\_\_  
Joel Kiff

720 Olive Drive, Suite D Davis, CA 95616 916-297-4800



Report Number : 27733

Date : 8/6/02

Project Name : 3790 Hopyard Road, Pleasanton

Project Number : 244-0497

Sample : CPT-1-66

Matrix : Water

Lab Number : 27733-01

Sample Date : 7/26/02

Parameter	Measured Value	Method Reporting Limit	Units	Analysis Method	Date Analyzed
Benzene	< 0.50	0.50	ug/L	EPA 8260B	8/1/02
Toluene	1.6	0.50	ug/L	EPA 8260B	8/1/02
Ethylbenzene	< 0.50	0.50	ug/L	EPA 8260B	8/1/02
Total Xylenes	< 0.50	0.50	ug/L	EPA 8260B	8/1/02
Methyl-t-butyl ether (MTBE)	< 5.0	5.0	ug/L	EPA 8260B	8/1/02
TPH as Gasoline	< 50	50	ug/L	EPA 8260B	8/1/02
Toluene - d8 (Surr)	92.5		% Recovery	EPA 8260B	8/1/02
4-Bromofluorobenzene (Surr)	99.4		% Recovery	EPA 8260B	8/1/02


Sample : CPT-1-79

Matrix : Water

Lab Number : 27733-02

Sample Date : 7/26/02

Parameter	Measured Value	Method Reporting Limit	Units	Analysis Method	Date Analyzed
Benzene	< 0.50	0.50	ug/L	EPA 8260B	8/1/02
Toluene	1.6	0.50	ug/L	EPA 8260B	8/1/02
Ethylbenzene	< 0.50	0.50	ug/L	EPA 8260B	8/1/02
Total Xylenes	< 0.50	0.50	ug/L	EPA 8260B	8/1/02
Methyl-t-butyl ether (MTBE)	< 5.0	5.0	ug/L	EPA 8260B	8/1/02
TPH as Gasoline	< 50	50	ug/L	EPA 8260B	8/1/02
Toluene - d8 (Surr)	98.2		% Recovery	EPA 8260B	8/1/02
4-Bromofluorobenzene (Surr)	99.9		% Recovery	EPA 8260B	8/1/02

Approved By:  Joel Kiff



Report Number : 27733

Date : 8/6/02

Project Name : 3790 Hopyard Road, Pleasanton

Project Number : 244-0497

Sample : D-1

Matrix : Soil

Lab Number : 27733-03

Sample Date :7/26/02

Parameter	Measured Value	Method Reporting Limit	Units	Analysis Method	Date Analyzed
Benzene	< 0.005	0.005	mg/Kg	EPA 8260B	8/5/02
Toluene	< 0.005	0.005	mg/Kg	EPA 8260B	8/5/02
Ethylbenzene	< 0.005	0.005	mg/Kg	EPA 8260B	8/5/02
Total Xylenes	< 0.005	0.005	mg/Kg	EPA 8260B	8/5/02
Methyl-t-butyl ether (MTBE)	< 0.5	0.5	mg/Kg	EPA 8260B	8/5/02
TPH as Gasoline	< 1.0	1.0	mg/Kg	EPA 8260B	8/5/02
Toluene - d8 (Surr)	99.4		% Recovery	EPA 8260B	8/5/02
4-Bromofluorobenzene (Surr)	97.4		% Recovery	EPA 8260B	8/5/02

Sample : D-2

Matrix : Soil

Lab Number : 27733-04

Sample Date :7/26/02

Parameter	Measured Value	Method Reporting Limit	Units	Analysis Method	Date Analyzed
Benzene	< 0.005	0.005	mg/Kg	EPA 8260B	7/31/02
Toluene	< 0.005	0.005	mg/Kg	EPA 8260B	7/31/02
Ethylbenzene	< 0.005	0.005	mg/Kg	EPA 8260B	7/31/02
Total Xylenes	< 0.005	0.005	mg/Kg	EPA 8260B	7/31/02
Methyl-t-butyl ether (MTBE)	< 0.5	0.5	mg/Kg	EPA 8260B	7/31/02
TPH as Gasoline	< 1.0	1.0	mg/Kg	EPA 8260B	7/31/02
Toluene - d8 (Surr)	108		% Recovery	EPA 8260B	7/31/02
4-Bromofluorobenzene (Surr)	85.1		% Recovery	EPA 8260B	7/31/02

Approved By:  Joel Kiff



Report Number : 27733

Date : 8/6/02

Project Name : 3790 Hopyard Road, Pleasanton

Project Number : 244-0497

Sample : D-3

Matrix : Soil

Lab Number : 27733-05

Sample Date :7/26/02

Parameter	Measured Value	Method Reporting Limit	Units	Analysis Method	Date Analyzed
Benzene	< 0.005	0.005	mg/Kg	EPA 8260B	8/5/02
Toluene	< 0.005	0.005	mg/Kg	EPA 8260B	8/5/02
Ethylbenzene	0.012	0.005	mg/Kg	EPA 8260B	8/5/02
Total Xylenes	0.011	0.005	mg/Kg	EPA 8260B	8/5/02
Methyl-t-butyl ether (MTBE)	< 0.5	0.5	mg/Kg	EPA 8260B	8/5/02
TPH as Gasoline	4.0	1.0	mg/Kg	EPA 8260B	8/6/02
Toluene - d8 (Surr)	101		% Recovery	EPA 8260B	8/5/02
4-Bromofluorobenzene (Surr)	89.3		% Recovery	EPA 8260B	8/5/02

Sample : D-4

Matrix : Soil

Lab Number : 27733-06

Sample Date :7/26/02

Parameter	Measured Value	Method Reporting Limit	Units	Analysis Method	Date Analyzed
Benzene	< 0.005	0.005	mg/Kg	EPA 8260B	8/3/02
Toluene	< 0.005	0.005	mg/Kg	EPA 8260B	8/3/02
Ethylbenzene	0.053	0.005	mg/Kg	EPA 8260B	8/3/02
Total Xylenes	0.018	0.010	mg/Kg	EPA 8260B	8/3/02
Methyl-t-butyl ether (MTBE)	< 0.5	0.5	mg/Kg	EPA 8260B	8/3/02
TPH as Gasoline	1.8	1.0	mg/Kg	EPA 8260B	8/3/02
Toluene - d8 (Surr)	100		% Recovery	EPA 8260B	8/3/02
4-Bromofluorobenzene (Surr)	103		% Recovery	EPA 8260B	8/3/02

Approved By:  Joel Kiff



Report Number : 27733

Date : 8/6/02

Project Name : 3790 Hopyard Road, Pleasanton

Project Number : 244-0497

Sample : P-1

Matrix : Soil

Lab Number : 27733-07

Sample Date :7/26/02

Parameter	Measured Value	Method Reporting Limit	Units	Analysis Method	Date Analyzed
<b>Benzene</b>	<b>0.079</b>	0.050	mg/Kg	EPA 8260B	8/6/02
<b>Toluene</b>	<b>0.072</b>	0.050	mg/Kg	EPA 8260B	8/6/02
<b>Ethylbenzene</b>	<b>0.48</b>	0.050	mg/Kg	EPA 8260B	8/6/02
<b>Total Xylenes</b>	<b>1.1</b>	0.10	mg/Kg	EPA 8260B	8/6/02
<b>Methyl-t-butyl ether (MTBE)</b>	<b>&lt; 0.5</b>	0.5	mg/Kg	EPA 8260B	8/6/02
<b>TPH as Gasoline</b>	<b>260</b>	5.0	mg/Kg	EPA 8260B	8/6/02
Toluene - d8 (Surr)	97.6		% Recovery	EPA 8260B	8/6/02
4-Bromofluorobenzene (Surr)	92.7		% Recovery	EPA 8260B	8/6/02

Sample : P-2

Matrix : Soil

Lab Number : 27733-08

Sample Date :7/26/02

Parameter	Measured Value	Method Reporting Limit	Units	Analysis Method	Date Analyzed
<b>Benzene</b>	<b>&lt; 0.005</b>	0.005	mg/Kg	EPA 8260B	8/3/02
<b>Toluene</b>	<b>&lt; 0.005</b>	0.005	mg/Kg	EPA 8260B	8/3/02
<b>Ethylbenzene</b>	<b>&lt; 0.005</b>	0.005	mg/Kg	EPA 8260B	8/3/02
<b>Total Xylenes</b>	<b>&lt; 0.005</b>	0.005	mg/Kg	EPA 8260B	8/3/02
<b>Methyl-t-butyl ether (MTBE)</b>	<b>&lt; 0.5</b>	0.5	mg/Kg	EPA 8260B	8/3/02
<b>TPH as Gasoline</b>	<b>&lt; 1.0</b>	1.0	mg/Kg	EPA 8260B	8/3/02
Toluene - d8 (Surr)	98.5		% Recovery	EPA 8260B	8/3/02
4-Bromofluorobenzene (Surr)	102		% Recovery	EPA 8260B	8/3/02

Approved By:  Joel Kiff



Report Number : 27733

Date : 8/6/02

Project Name : 3790 Hopyard Road, Pleasanton

Project Number : 244-0497

Sample : P-3

Matrix : Soil

Lab Number : 27733-09

Sample Date : 7/26/02

Parameter	Measured Value	Method Reporting Limit	Units	Analysis Method	Date Analyzed
<b>Benzene</b>	<b>0.0083</b>	0.005	mg/Kg	EPA 8260B	8/5/02
<b>Toluene</b>	<b>&lt; 0.005</b>	0.005	mg/Kg	EPA 8260B	8/5/02
<b>Ethylbenzene</b>	<b>0.26</b>	0.005	mg/Kg	EPA 8260B	8/5/02
<b>Total Xylenes</b>	<b>&lt; 0.005</b>	0.005	mg/Kg	EPA 8260B	8/5/02
<b>Methyl-t-butyl ether (MTBE)</b>	<b>&lt; 0.5</b>	0.5	mg/Kg	EPA 8260B	8/5/02
<b>TPH as Gasoline</b>	<b>10</b>	1.0	mg/Kg	EPA 8260B	8/6/02
Toluene - d8 (Surr)	100		% Recovery	EPA 8260B	8/5/02
4-Bromofluorobenzene (Surr)	91.9		% Recovery	EPA 8260B	8/5/02

Approved By:  Joel Kiff



Report Number : 27733

Date : 8/6/02

**QC Report : Method Blank Data**

Project Name : **3790 Hopyard Road, Pleasanton**

Project Number : **244-0497**

Parameter	Measured Value	Method Reporting Limit	Units	Analysis Method	Date Analyzed
Benzene	< 0.005	0.005	mg/Kg	EPA 8260B	8/1/02
Toluene	< 0.005	0.005	mg/Kg	EPA 8260B	8/1/02
Ethylbenzene	< 0.005	0.005	mg/Kg	EPA 8260B	8/1/02
Total Xylenes	< 0.005	0.005	mg/Kg	EPA 8260B	8/1/02
Methyl-t-butyl ether (MTBE)	< 0.5	0.5	mg/Kg	EPA 8260B	8/1/02
TPH as Gasoline	< 1.0	1.0	mg/Kg	EPA 8260B	8/1/02
Toluene - d8 (Surr)	107		%	EPA 8260B	8/1/02
4-Bromofluorobenzene (Surr)	81.4		%	EPA 8260B	8/1/02
Benzene	< 0.005	0.005	mg/Kg	EPA 8260B	8/3/02
Toluene	< 0.005	0.005	mg/Kg	EPA 8260B	8/3/02
Ethylbenzene	< 0.005	0.005	mg/Kg	EPA 8260B	8/3/02
Total Xylenes	< 0.005	0.005	mg/Kg	EPA 8260B	8/3/02
Methyl-t-butyl ether (MTBE)	< 0.5	0.5	mg/Kg	EPA 8260B	8/3/02
TPH as Gasoline	< 1.0	1.0	mg/Kg	EPA 8260B	8/3/02
Toluene - d8 (Surr)	105		%	EPA 8260B	8/3/02
4-Bromofluorobenzene (Surr)	85.8		%	EPA 8260B	8/3/02
Benzene	< 0.50	0.50	ug/L	EPA 8260B	8/1/02
Toluene	< 0.50	0.50	ug/L	EPA 8260B	8/1/02
Ethylbenzene	< 0.50	0.50	ug/L	EPA 8260B	8/1/02
Total Xylenes	< 0.50	0.50	ug/L	EPA 8260B	8/1/02
Methyl-t-butyl ether (MTBE)	< 5.0	5.0	ug/L	EPA 8260B	8/1/02
TPH as Gasoline	< 50	50	ug/L	EPA 8260B	8/1/02
Toluene - d8 (Surr)	91.3		%	EPA 8260B	8/1/02
4-Bromofluorobenzene (Surr)	98.7		%	EPA 8260B	8/1/02

Parameter	Measured Value	Method Reporting Limit	Units	Analysis Method	Date Analyzed
Benzene	< 0.50	0.50	ug/L	EPA 8260B	8/1/02
Toluene	< 0.50	0.50	ug/L	EPA 8260B	8/1/02
Ethylbenzene	< 0.50	0.50	ug/L	EPA 8260B	8/1/02
Total Xylenes	< 0.50	0.50	ug/L	EPA 8260B	8/1/02
Methyl-t-butyl ether (MTBE)	< 5.0	5.0	ug/L	EPA 8260B	8/1/02
TPH as Gasoline	< 50	50	ug/L	EPA 8260B	8/1/02
Toluene - d8 (Surr)	97.5		%	EPA 8260B	8/1/02
4-Bromofluorobenzene (Surr)	99.9		%	EPA 8260B	8/1/02

Approved By: Joel Kiff



KIFF ANALYTICAL, LLC

720 Olive Drive, Suite D Davis, CA 95616 530-297-4800

Report Number : 27733


Date : 8/6/02

## QC Report : Matrix Spike/ Matrix Spike Duplicate

Project Name : 3790 Hopyard Road,

Project Number : 244-0497

Parameter	Spiked Sample	Sample Value	Spike Level	Spike Dup. Level	Spiked Sample Value	Duplicate Spiked Sample Value	Units	Analysis Method	Date Analyzed	Spiked Sample Percent Recov.	Duplicate Spiked Sample Percent Recov.	Relative Percent Diff.	Spiked Sample Percent Recov. Limit	Relative Percent Diff. Limit
Benzene	27742-03	<0.0050	0.0385	0.0386	0.0392	0.0382	mg/Kg	EPA 8260B	8/1/02	102	98.8	2.89	70-130	25
Toluene	27742-03	<0.0050	0.0385	0.0386	0.0418	0.0406	mg/Kg	EPA 8260B	8/1/02	108	105	2.86	70-130	25
Tert-Butanol	27742-03	<0.0050	0.193	0.193	0.169	0.173	mg/Kg	EPA 8260B	8/1/02	87.9	89.6	1.88	70-130	25
Methyl-t-Butyl Ether	27742-03	<0.0050	0.0385	0.0386	0.0346	0.0349	mg/Kg	EPA 8260B	8/1/02	89.8	90.5	0.777	70-130	25
Benzene	27733-03	<0.0050	0.0392	0.0400	0.0346	0.0373	mg/Kg	EPA 8260B	8/3/02	88.2	93.3	5.54	70-130	25
Toluene	27733-03	<0.0050	0.0392	0.0400	0.0365	0.0397	mg/Kg	EPA 8260B	8/3/02	93.1	99.2	6.39	70-130	25
Tert-Butanol	27733-03	0.038	0.196	0.200	0.189	0.205	mg/Kg	EPA 8260B	8/3/02	76.8	83.3	8.13	70-130	25
Methyl-t-Butyl Ether	27733-03	0.027	0.0392	0.0400	0.0526	0.0416	mg/Kg	EPA 8260B	8/3/02	64.5	35.7	57.5	70-130	25
Benzene	27733-01	<0.50	40.0	40.0	43.9	42.7	ug/L	EPA 8260B	8/1/02	110	107	2.86	70-130	25
Toluene	27733-01	1.6	40.0	40.0	42.8	42.8	ug/L	EPA 8260B	8/1/02	103	103	0.0243	70-130	25
Tert-Butanol	27733-01	<5.0	200	200	203	204	ug/L	EPA 8260B	8/1/02	102	102	0.403	70-130	25
Methyl-t-Butyl Ether	27733-01	<0.50	40.0	40.0	47.6	47.4	ug/L	EPA 8260B	8/1/02	119	119	0.295	70-130	25
Benzene	27733-02	<0.50	40.0	40.0	40.5	40.0	ug/L	EPA 8260B	8/1/02	101	100	1.07	70-130	25
Toluene	27733-02	1.6	40.0	40.0	41.3	41.2	ug/L	EPA 8260B	8/1/02	99.2	99.1	0.126	70-130	25
Tert-Butanol	27733-02	<5.0	200	200	196	202	ug/L	EPA 8260B	8/1/02	98.2	101	3.03	70-130	25
Methyl-t-Butyl Ether	27733-02	<0.50	40.0	40.0	40.5	41.3	ug/L	EPA 8260B	8/1/02	101	103	1.91	70-130	25

Approved By:  Joel Kiff

KIFF ANALYTICAL, LLC

720 Olive Drive, Suite D Davis, CA 95616 530-297-4800

**QC Report : Laboratory Control Sample (LCS)**

Project Name : **3790 Hopyard Road,**

Project Number : **244-0497**

Parameter	Spike Level	Units	Analysis Method	Date Analyzed	LCS Percent Recov.	LCS Percent Recov. Limit
Benzene	0.0368	mg/Kg	EPA 8260B	8/1/02	97.0	70-130
Toluene	0.0368	mg/Kg	EPA 8260B	8/1/02	104	70-130
Tert-Butanol	0.184	mg/Kg	EPA 8260B	8/1/02	89.0	70-130
Methyl-t-Butyl Ether	0.0368	mg/Kg	EPA 8260B	8/1/02	83.9	70-130
Benzene	0.0391	mg/Kg	EPA 8260B	8/3/02	98.2	70-130
Toluene	0.0391	mg/Kg	EPA 8260B	8/3/02	105	70-130
Tert-Butanol	0.195	mg/Kg	EPA 8260B	8/3/02	90.0	70-130
Methyl-t-Butyl Ether	0.0391	mg/Kg	EPA 8260B	8/3/02	88.9	70-130
Benzene	40.0	ug/L	EPA 8260B	8/1/02	109	70-130
Toluene	40.0	ug/L	EPA 8260B	8/1/02	101	70-130
Tert-Butanol	200	ug/L	EPA 8260B	8/1/02	103	70-130
Methyl-t-Butyl Ether	40.0	ug/L	EPA 8260B	8/1/02	116	70-130
Benzene	40.0	ug/L	EPA 8260B	8/1/02	99.5	70-130
Toluene	40.0	ug/L	EPA 8260B	8/1/02	98.6	70-130
Tert-Butanol	200	ug/L	EPA 8260B	8/1/02	96.4	70-130
Methyl-t-Butyl Ether	40.0	ug/L	EPA 8260B	8/1/02	99.0	70-130

KIFF ANALYTICAL, LLC

Approved By:

*Joel Kiff*  
 \_\_\_\_\_  
 Joel Kiff

# SHELL Chain Of Custody Record

720 Olive Drive, Suite D  
Davis, CA 95616

(530) 297-4800 (530) 297-4803 fax

Shell Project Manager to be involved:

- SCIENCE & ENGINEERING
- TECHNICAL SERVICES
- O&M HOUSTON

Karen Petryna

27733

INCIDENT NUMBER (SHELL)							
9	8	9	9	5	8	4	2
SAMPLER NUMBER (SHELL)							

DATE: 7/26/02

PAGE: 1 of 1

SAMPLING COMPANY: <b>Cambria Environmental Technology</b>		LOG CODE: <b>CETO</b>	SITE ADDRESS (Street and City): <b>3790 Hopyard Road, Pleasanton</b>		GLOBAL ID NO.: <b>T0600101257</b>
ADDRESS: <b>1144-65TH Street, Oakland, CA 94608</b>		EDP DELIVERABLE TO (Responsible Party or Design):		PHONE NO.:	CONSULTANT PROJECT NO.: <b>244-0497</b>
PROJECT CONTACT (Hardcopy or PDF Report to): <b>Jacquelyn Jones</b>		shelloaklandedf@cambria-env.com		SAMPLER NAME(S) (Print):	
TELEPHONE: <b>510-420-3316</b>	FAX: <b>510-420-9170</b>	EMAIL: <b>jones@cambria-env.com</b>		<b>Jason K. Gerke - 510-420-3320</b>	

TURNAROUND TIME (BUSINESS DAYS):  
 10 DAYS  5 DAYS  72 HOURS  48 HOURS  24 HOURS  LESS THAN 24 HOURS

LA - RWQCB REPORT FORMAT  UST AGENCY: \_\_\_\_\_

GC/MS MTBE CONFIRMATION: HIGHEST \_\_\_\_\_ HIGHEST per BORING \_\_\_\_\_ ALL \_\_\_\_\_

SPECIAL INSTRUCTIONS OR NOTES: CHECK BOX IF EDD IS NOT NEEDED

**REQUESTED ANALYSIS**

TPH - Gas, Purgeable	BTEX	MTBE (9021B - Spbb RL)	MTBE (9290B - 0.5ppb RL)	Oxygenates (5) by (9290B)	Ethanol (9290B)	Methanol	EDB & 1,2-DCA (9290B)	EPA 5035 Extraction for Volatiles	VOCs Halogenated/Aromatic (9021B)	TRPH (418.1)	Vapor VOCs BTEX / MTBE (TO-15)	Vapor VOCs Full List (TO-15)	Vapor TPH (ASTM 9416m)	Vapor Fixed Gases (ASTM D1946)	Test for Disposal (4B-_____)	TPH - Diesel, Extractable (9016m)	MTBE (9290B) Confirmation, See Note
----------------------	------	------------------------	--------------------------	---------------------------	-----------------	----------	-----------------------	-----------------------------------	-----------------------------------	--------------	--------------------------------	------------------------------	------------------------	--------------------------------	------------------------------	-----------------------------------	-------------------------------------

**FIELD NOTES:**  
Container/Preservative or PID Readings or Laboratory Notes

cc lab report to: jgerke@cambria-env.com

SAMPLE ID	Field Sample Identification		SAMPLING		MATRIX	NO. OF CONT.	TPH - Gas, Purgeable	BTEX	MTBE (9021B - Spbb RL)	MTBE (9290B - 0.5ppb RL)	Oxygenates (5) by (9290B)	Ethanol (9290B)	Methanol	EDB & 1,2-DCA (9290B)	EPA 5035 Extraction for Volatiles	VOCs Halogenated/Aromatic (9021B)	TRPH (418.1)	Vapor VOCs BTEX / MTBE (TO-15)	Vapor VOCs Full List (TO-15)	Vapor TPH (ASTM 9416m)	Vapor Fixed Gases (ASTM D1946)	Test for Disposal (4B-_____)	TPH - Diesel, Extractable (9016m)	MTBE (9290B) Confirmation, See Note	TEMPERATURE ON RECEIPT C°
	DATE	TIME																							
CPT-1-66	7/26/02	1050	Water	4		X	X	X																	01
CPT-1-79	"	1120	"	"		X	X	X																	02
D-1		1405	Soil	1		X	X	X																	03
D-2		1410				X	X	X																	04
D-3		1416				X	X	X																	05
D-4		1420				X	X	X																	06
P-1		1427				X	X	X																	07
P-2		1431				X	X	X																	08
P-3		1436				X	X	X																	09

Relinquished by: (Signature) <i>Jason K. Gerke</i>	Received by: (Signature) "Secure Location"	Date: 7/26/02	Time: 1530
Relinquished by: (Signature)	Received by: (Signature)	Date:	Time:
Relinquished by: (Signature)	Received by: (Signature) <i>Howard Brewer KIFF</i>	Date: 0730 02	Time: 1040



Report Number : 27732

Date : 08/11/2002

Jacquelyn Jones  
Cambria Environmental Technology, Inc.  
1144 65th Street, Suite B  
Oakland, CA 94608

Subject : 5 Soil Samples  
Project Name : 3790 Hopyard Road, Pleasanton  
Project Number : 244-04947  
P.O. Number : SAP# 135784

Dear Ms. Jones,

Chemical analysis of the samples referenced above has been completed. Summaries of the data are contained on the following pages. Sample(s) were received under documented chain-of-custody. US EPA protocols for sample storage and preservation were followed.

Kiff Analytical is certified by the State of California (# 2236). If you have any questions regarding procedures or results, please call me at 530-297-4800.

Sincerely,

A handwritten signature in black ink that reads "Joel Kiff". The signature is written in a cursive style with a large, looped "J" and "K".

Joel Kiff



Report Number : 27732

Date : 08/11/2002

Project Name : 3790 Hopyard Road, Pleasanton

Project Number : 244-04947

Sample : SP-1-A

Matrix : Soil

Lab Number : 27732-01

Sample Date :07/26/2002

Parameter	Measured Value	Method Reporting Limit	Units	Analysis Method	Date Analyzed
TPH as Gasoline	< 1.0	1.0	mg/Kg	EPA 8260B	07/31/2002
4-Bromofluorobenzene (Surr)	99.6		% Recovery	EPA 8260B	07/31/2002

Sample : SP-1-B

Matrix : Soil

Lab Number : 27732-02

Sample Date :07/26/2002

Parameter	Measured Value	Method Reporting Limit	Units	Analysis Method	Date Analyzed
TPH as Gasoline	< 1.0	1.0	mg/Kg	EPA 8260B	07/31/2002
4-Bromofluorobenzene (Surr)	84.7		% Recovery	EPA 8260B	07/31/2002

Sample : SP-1-C

Matrix : Soil

Lab Number : 27732-03

Sample Date :07/26/2002

Parameter	Measured Value	Method Reporting Limit	Units	Analysis Method	Date Analyzed
TPH as Gasoline	< 1.0	1.0	mg/Kg	EPA 8260B	07/31/2002
4-Bromofluorobenzene (Surr)	83.3		% Recovery	EPA 8260B	07/31/2002

Approved By:  Joel Kiff



Report Number : 27732

Date : 08/11/2002

Project Name : 3790 Hopyard Road, Pleasanton

Project Number : 244-04947

Sample : SP-1-D

Matrix : Soil

Lab Number : 27732-04

Sample Date :07/26/2002

Parameter	Measured Value	Method Reporting Limit	Units	Analysis Method	Date Analyzed
TPH as Gasoline	< 1.0	1.0	mg/Kg	EPA 8260B	07/31/2002
4-Bromofluorobenzene (Surr)	87.3		% Recovery	EPA 8260B	07/31/2002

Sample : SP-1-A,B,C,D

Matrix : Soil

Lab Number : 27732-05

Sample Date :07/26/2002

Parameter	Measured Value	Method Reporting Limit	Units	Analysis Method	Date Analyzed
Benzene	< 0.005	0.005	mg/Kg	EPA 8260B	07/31/2002
Toluene	< 0.005	0.005	mg/Kg	EPA 8260B	07/31/2002
Ethylbenzene	< 0.005	0.005	mg/Kg	EPA 8260B	07/31/2002
Total Xylenes	< 0.005	0.005	mg/Kg	EPA 8260B	07/31/2002
Methyl-t-butyl ether (MTBE)	< 0.5	0.5	mg/Kg	EPA 8260B	07/31/2002
Toluene - d8 (Surr)	109		% Recovery	EPA 8260B	07/31/2002
4-Bromofluorobenzene (Surr)	87.0		% Recovery	EPA 8260B	07/31/2002

Approved By:  Joel Kiff

Report Number : 27732

Date : 08/11/2002

**QC Report : Method Blank Data**

**Project Name : 3790 Hopyard Road, Pleasanton**

**Project Number : 244-04947**

<u>Parameter</u>	<u>Measured Value</u>	<u>Method Reporting Limit</u>	<u>Units</u>	<u>Analysis Method</u>	<u>Date Analyzed</u>
Benzene	< 0.005	0.005	mg/Kg	EPA 8260B	08/01/2002
Toluene	< 0.005	0.005	mg/Kg	EPA 8260B	08/01/2002
Ethylbenzene	< 0.005	0.005	mg/Kg	EPA 8260B	08/01/2002
Total Xylenes	< 0.005	0.005	mg/Kg	EPA 8260B	08/01/2002
Methyl-t-butyl ether (MTBE)	< 0.5	0.5	mg/Kg	EPA 8260B	08/01/2002
TPH as Gasoline	< 1.0	1.0	mg/Kg	EPA 8260B	08/01/2002
Toluene - d8 (Surr)	107		%	EPA 8260B	08/01/2002
4-Bromofluorobenzene (Surr)	81.4		%	EPA 8260B	08/01/2002

<u>Parameter</u>	<u>Measured Value</u>	<u>Method Reporting Limit</u>	<u>Units</u>	<u>Analysis Method</u>	<u>Date Analyzed</u>
------------------	-----------------------	-------------------------------	--------------	------------------------	----------------------

KIFF ANALYTICAL, LLC

720 Olive Drive, Suite D Davis, CA 95616 530-297-4800

Approved By: Joel Kiff





Report Number : 27732

Date : 08/11/2002

QC Report : Matrix Spike/ Matrix Spike Duplicate

Project Name : 3790 Hopyard Road,

Project Number : 244-04947

Parameter	Spiked Sample	Sample Value	Spike Level	Spike Dup. Level	Spiked Sample Value	Duplicate Spiked Sample Value	Units	Analysis Method	Date Analyzed	Spiked Sample Percent Recov.	Duplicate Spiked Sample Percent Recov.	Relative Percent Diff.	Spiked Sample Percent Recov. Limit	Relative Percent Diff. Limit
Benzene	27742-03	<0.0050	0.0385	0.0386	0.0392	0.0382	mg/Kg	EPA 8260B	8/1/02	102	98.8	2.89	70-130	25
Toluene	27742-03	<0.0050	0.0385	0.0386	0.0418	0.0406	mg/Kg	EPA 8260B	8/1/02	108	105	2.86	70-130	25
Tert-Butanol	27742-03	<0.0050	0.193	0.193	0.169	0.173	mg/Kg	EPA 8260B	8/1/02	87.9	89.6	1.88	70-130	25
Methyl-t-Butyl Ether	27742-03	<0.0050	0.0385	0.0386	0.0346	0.0349	mg/Kg	EPA 8260B	8/1/02	89.8	90.5	0.777	70-130	25

KIFF ANALYTICAL, LLC

720 Olive Drive, Suite D Davis, CA 95616 530-297-4800

Approved By:  Joel Kiff

Report Number : 27732

Date : 08/11/2002

**QC Report : Laboratory Control Sample (LCS)**


Project Name : **3790 Hopyard Road,**

Project Number : **244-04947**

Parameter	Spike Level	Units	Analysis Method	Date Analyzed	LCS Percent Recov.	LCS Percent Recov. Limit
Benzene	0.0368	mg/Kg	EPA 8260B	8/1/02	97.0	70-130
Toluene	0.0368	mg/Kg	EPA 8260B	8/1/02	104	70-130
Tert-Butanol	0.184	mg/Kg	EPA 8260B	8/1/02	89.0	70-130
Methyl-t-Butyl Ether	0.0368	mg/Kg	EPA 8260B	8/1/02	83.9	70-130

KIFF ANALYTICAL, LLC

720 Olive Drive, Suite D Davis, CA 95616 530-297-4800

Approved By:  \_\_\_\_\_  
Joel Kiff



HOUSTON LABORATORY  
8880 INTERCHANGE DRIVE  
HOUSTON, TX 77054  
(713) 660-0901

Shell Oil Products US

Certificate of Analysis Number:

**02080023**

<b>Report To:</b> KIFF Analytical Joel Kiff 720 Olive Drive Suite D Davis CA 95616- ph (530) 297-4800      fax:	<b>Project Name:</b> SAP#135784 <b>Site:</b> 3790 Hopyard Rd. <b>Site Address:</b> 3790 Hopyard Road Pleasanton CA <b>PO Number:</b> SAP# 135784 <b>State:</b> California <b>State Cert. No.:</b> 01142CA <b>Date Reported:</b> 8/13/2002
---	--

This Report Contains A Total Of 8 Pages

Excluding This Page

8/13/2002

Date



HOUSTON LABORATORY  
8880 INTERCHANGE DRIVE  
HOUSTON, TX 77054  
(713) 660-0901

Case Narrative for:  
Shell Oil Products US

Certificate of Analysis Number:  
**02080023**

<b>Report To:</b> KIFF Analytical Joel Kiff 720 Olive Drive Suite D Davis CA 95616- ph (530) 297-4800      fax:	<b>Project Name:</b> SAP#135784 <b>Site:</b> 3790 Hopyard Rd. <b>Site Address:</b> 3790 Hopyard Road Pleasanton CA <b>PQ Number:</b> SAP# 135784 <b>State:</b> California <b>State Cert. No.:</b> 01142CA <b>Date Reported:</b> 8/13/2002
---	--

Matrix spike (MS) and matrix spike duplicate (MSD) samples are chosen and tested at random from an analytical batch of "like" matrix to check for possible matrix effect. The MS and MSD will provide site specific matrix data only for those samples which are spiked by the laboratory. Since the MS and MSD are chosen at random from an analytical batch, the sample chosen for spike purposes may or may not have been a sample submitted in this sample delivery group. The validity of the analytical procedures for which data is reported in this analytical report is determined by the Laboratory Control Sample (LCS) and the Method Blank (MB). The Laboratory Control Sample (LCS) and the Method Blank (MB) are processed with the samples and the MS/MSD to ensure method criteria are achieved throughout the entire analytical process.

Any other exceptions associated with this report will be footnoted in the analytical result page(s) or the quality control summary page(s).

Please do not hesitate to contact us if you have any questions or comments pertaining to this data report. Please reference the above Certificate of Analysis Number.

This report shall not be reproduced except in full, without the written approval of the laboratory. The reported results are only representative of the samples submitted for testing.

SPL, Inc. is pleased to be of service to you. We anticipate working with you in fulfilling all your current and future analytical needs.

8/13/2002

Bernadette Fini  
Customer Service Manager

Date



HOUSTON LABORATORY  
 8880 INTERCHANGE DRIVE  
 HOUSTON, TX 77054  
 (713) 660-0901

**Shell Oil Products US**

Certificate of Analysis Number:

**02080023**

**Report To:** KIFF Analytical  
 Joel Kiff  
 720 Olive Drive  
 Suite D  
 Davis  
 CA  
 95616-  
 ph (530) 297-4800 fax: (530) 297-4803

**Project Name:** SAP#135784  
**Site:** 3790 Hopyard Rd.  
**Site Address:** 3790 Hopyard Road  
 Pleasanton CA  
**PO Number:** SAP# 135784  
**State:** California  
**State Cert. No.:** 01142CA  
**Date Reported:** 8/13/2002

**Fax To:**

Client Sample ID	Lab Sample ID	Matrix	Date Collected	Date Received	COC ID	HOLD
SP-1-A,B,C,D	02080023-01	Soil	7/26/2002 1:00:00 PM	8/1/2002 10:00:00 AM		<input type="checkbox"/>

Bernadette Fini  
 Customer Service Manager

8/13/2002

Date

Joel Grice  
 Laboratory Director  
 Ted Yen  
 Quality Assurance Officer



HOUSTON LABORATORY  
 8880 INTERCHANGE DRIVE  
 HOUSTON, TX 77054  
 (713) 660-0901

Client Sample ID: SP-1-A,B,C,D      Collected: 07/26/2002 13:00      SPL Sample ID: 02080023-01

Site: 3790 Hopyard Rd.

Analyses/Method	Result	Rep.Limit	Dil. Factor	QUAL	Date Analyzed	Analyst	Seq. #
<b>METALS BY METHOD 6010B, TOTAL</b>			<b>MCL</b>	<b>SW6010B</b>	<b>Units: mg/Kg</b>		
Lead	5	0.5	1		08/13/02 9:48	NS	1272763

Prep Method	Prep Date	Prep Initials
SW3050B	08/01/2002 15:00	MVE

**Bernadette Fini**  
**Project Manager**

**Qualifiers:**      ND/U - Not Detected at the Reporting Limit      >MCL - Result Over Maximum Contamination Limit(MCL)  
 B - Analyte detected in the associated Method Blank      D - Surrogate Recovery Unreportable due to Dilution  
 \* - Surrogate Recovery Outside Advisable QC Limits      MI - Matrix Interference  
 J - Estimated Value between MDL and PQL

# *Quality Control Documentation*



Quality Control Report

HOUSTON LABORATORY
8880 INTERCHANGE DRIVE
HOUSTON, TX 77054
(713) 660-0901

Shell Oil Products US

SAP#135784

Analysis: Metals by Method 6010B, Total
Method: SW6010B

WorkOrder: 02080023
Lab Batch ID: 21703-T

Method Blank

Samples in Analytical Batch:

RunID: TJAT\_020812D-1272755 Units: mg/Kg
Analysis Date: 08/13/2002 8:56 Analyst: NS
Preparation Date: 08/01/2002 15:00 Prep By: MVE Method SW3050B

Lab Sample ID: 02080023-01A
Client Sample ID: SP-1-A,B,C,D

Table with 3 columns: Analyte, Result, Rep Limit. Row: Lead, ND, 0.5

Laboratory Control Sample (LCS)

RunID: TJAT\_020812D-1272756 Units: mg/L
Analysis Date: 08/13/2002 9:02 Analyst: NS
Preparation Date: 08/01/2002 15:00 Prep By: MVE Method SW3050B

Table with 6 columns: Analyte, Spike Added, Result, Percent Recovery, Lower Limit, Upper Limit. Row: Lead, 1, 0.9692, 97, 80, 120

Matrix Spike (MS) / Matrix Spike Duplicate (MSD)

Sample Spiked: 02071090-01
RunID: TJAT\_020812D-1272758 Units: mg/Kg
Analysis Date: 08/13/2002 9:16 Analyst: NS
Preparation Date: 08/01/2002 15:00 Prep By: MVE Method SW3050B

Table with 12 columns: Analyte, Sample Result, MS Spike Added, MS Result, MS % Recovery, MSD Spike Added, MSD Result, MSD % Recovery, RPD, RPD Limit, Low Limit, High Limit. Row: Lead, 90.54, 100, 171.7, 81.15, 100, 175.5, 84.92, 4.541, 20, 75, 125

Qualifiers: ND/U - Not Detected at the Reporting Limit MI - Matrix Interference
B - Analyte detected in the associated Method Blank D - Recovery Unreportable due to Dilution
J - Estimated value between MDL and PQL \* - Recovery Outside Advisable QC Limits

The percent recoveries for QC samples are correct as reported. Due to significant figures and rounding, the reported RPD may differ from the displayed RPD values but is correct as reported.



*Sample Receipt Checklist  
And  
Chain of Custody*



HOUSTON LABORATORY  
8880 INTERCHANGE DRIVE  
HOUSTON, TX 77054  
(713) 660-0901

**Sample Receipt Checklist**

Workorder:	02080023	Received By:	NB
Date and Time Received:	8/1/2002 10:00:00 AM	Carrier name:	FedEx
Temperature:	4	Chilled by:	Water Ice

- 1. Shipping container/cooler in good condition?      Ye       No       Not Present
- 2. Custody seals intact on shipping container/cooler?      Ye       No       Not Present
- 3. Custody seals intact on sample bottles?      Ye       No       Not Present
- 4. Chain of custody present?      Ye       No
- 5. Chain of custody signed when relinquished and received?      Ye       No
- 6. Chain of custody agrees with sample labels?      Ye       No
- 7. Samples in proper container/bottle?      Ye       No
- 8. Sample containers intact?      Ye       No
- 9. Sufficient sample volume for indicated test?      Ye       No
- 10. All samples received within holding time?      Ye       No
- 11. Container/Temp Blank temperature in compliance?      Ye       No
- 12. Water - VOA vials have zero headspace      Ye       No       Not Applicable
- 13. Water - pH acceptable upon receipt?      Ye       No       Not Applicable

---

SPL Representative:       Contact Date & Time:

Client Name Contacted:

Non Conformance Issues:

Client Instructions:

---



720 Olive Drive, Suite D  
 Davis, CA 95616  
 Lab: 530.297.4800  
 Fax: 530.297.4803

02080023 BAF  
 Lab No. \_\_\_\_\_ Page 1 of 1

Project Contact (Hardcopy or PDF to):  
 Joel Kiff

EDF Report?  Yes  No

Chain-of-Custody Record and Analysis Request

Company/Address:  
 Kiff Analytical, LLC

Recommended but not mandatory to complete this section:  
 Sampling Company Log Code:

Analysis Request

Phone No.:

FAX No.:

Global ID:

Project Number:  
 244-04947

P.O. No.:  
 27732

EDF Deliverable to (Email Address):

Project Name:  
 3790 Hopyard Road, Pleasanton

E-mail address:  
 inbox@kiffanalytical.com

Project Address:

Sampling		Container			Preservative				Matrix	
Date	Time	Glass Jar	Poly	Anther	HCl	HNO3	ICE	NONE	WATER	SOIL

Sample Designation

SP-1 A,B,C,D	7/26/02	1300	1				X			X
--------------	---------	------	---	--	--	--	---	--	--	---

TtLC Lead	STLC Lead if TtLC : 50 mg/Kg	TCLP Lead if STLC : 5.0 mg/L	Date due:	For Lab Use Only
X	X	X	August 13, 2002	

Relinquished by:  
*Krista Kiff* / KIFF ANALYTICAL

Date: 07/31/02  
 Time: 1435

Received by:

Remarks: Please return shipped coolers with temperature blank.

Relinquished by:

Date:

Received by:

SAP# 135784

Relinquished by:

Date: 8/1/02

Received by Laboratory: *Chambers*

Bill to: Tim Dazey

46 rec 835626537769 816

CS DO



27732

ISSUED DATE: 05/23/97  
CANCELS ISSUE: 03/05/97  
ISSUED BY: RLG

**MATERIAL: MINIMUM SOIL ANALYSIS FOR UST SOIL WITH GASOLINE OR DIESEL CONTAMINATION**

**USE FOR ARIZONA, CALIFORNIA AND NEVADA WASTE ONLY!!!**

**NOTE: ANALYSES ARE BASED ON CHARACTERIZATION MINIMUM. YOU MUST BE SURE THAT THE FACILITY WILL TAKE THE FOLLOWING AS ACCEPTANCE. FURTHER ANALYSIS MAY BE REQUIRED FOR CHARACTERIZATION UPON REVIEW BY THE WASTE TEAM MEMBER OR TO MEET DISPOSAL SITE REQUIREMENTS. IF THE MATERIAL IS RETURNED TO CONSULTANT, COPIES OF ALL TRANSPORTATION DOCUMENTS MUST BE SENT TO THE WASTE DISPOSAL COORDINATOR FOR RECORDING WHEN PROJECT IS COMPLETE.**

**MINIMUM REQUIRED TESTING**

**Note: If material is to be sent to a BFI facility EPA METHOD 8010 must be run IN ADDITION to the following analysis prior to requesting profile approval:**

**TPH = TOTAL PETROLEUM HYDROCARBONS, DHS GC-FID MOD 8015  
GASOLINE OR DIESEL AS REQUIRED.**

**BTXE = EPA 8020 + MTBE**

**CAM METALS = TTLC LEAD, STLC LEAD IF TTLC => 50 MG/KG AND/OR  
ORGANIC LEAD IF TTLC => 13 MG/KG**

**AQUATIC BIOASSAY (FISH TOX) IS ONLY TO BE RUN ON SAMPLES WITH  
GREATER THAN 5000 PPM TPH. COMPOSITE A MAXIMUM OF 4 SAMPLES.**

**AQUATIC BIOASSAY (FISH TOX) = PART 800 OF "STANDARD METHODS FOR  
THE EXAMINATION OF WATER AND WASTEWATER (15TH EDITION)"**

**LABORATORY INSTRUCTIONS (MINIMUM GUIDELINES ONLY)**

- 8015/8020 TO BE BILLED AS "COMBO" WITHOUT EXCEPTION
- TPH REQUIRED FOR ALL SAMPLES.
- ALL OTHER TESTS REQUIRED TO BE RUN ON COMPOSITE(S). MAXIMUM 4 SAMPLES PER COMPOSITE.
- STLC REQUIRED FOR METALS WITH TTLC VALUE 10 X STLC MAXIMUM.
- ORGANIC ANALYSIS REQUIRED FOR TTLC LEAD OF 13 MG/KG OR GREATER.
- LABORATORY IS TO SUPPLY QA/QC INFORMATION WITH ALL ANALYTICAL REPORTS.
- MAIL OR FAX ALL ANALYSIS TO PERSON REQUESTING ANALYSIS.

PROCEDURE ORIGINAL DATE: 07/10/90  
PROCEDURE REVISED DATE: 03/05/97

**ATTACHMENT C**

Soil Disposal Confirmation

## Disposal Confirmation

Request for Transportation Received: 09/18/2002

### Consultant Information

Company: Cambria Environmental  
Contact: Dalie, Stewart  
Phone: 510-420-3320  
Fax: 510-420-6649

### Site Information

Station #: N/A  
Street Address: 3790 Hopyard Rd.  
City, State, ZIP: Pleasanton, CA 94566

Customer: Shell Oil Company RESA-0023-LDC  
RIPR #: 15452  
SAP # / Location: 135784  
Incident #: 98995842  
Location / WIC #: 2046138-0501  
Environmental Engineer: Petryna, Karen E.

Material Description: Soil Cuttings  
Estimated Quantity: 3 Yards  
Service Requested Date: 09/30/2002

Disposal Facility: Allied-BFI  
Contact: Griffith, Joe  
Phone: 800-204-4242  
Approval #: 2407  
Date of Disposal: 10/01/2002  
Actual Tonnage: 5 Yards

Transporter: Manley & Sons Trucking, Inc.  
Contact: Glenell Forbes  
Phone: 916 381-6864  
Fax: 916 381-1573  
Invoice: 50304A  
Date of Invoice: 10/09/2002