

*Memorandum
9/23/04
[Signature]*

P & D ENVIRONMENTAL

A Division of Paul H. King, Inc.
4020 Panama Court
Oakland, CA 94611
(510) 658-6916



FAX TRANSMITTAL
COVER SHEET

Date: 9/23/04 Job #: 0298
To: Amir Gholami
Company: ACDEH
From: Willi Welzenbach
P&D ENVIRONMENTAL

Number of pages in this transmittal, including this cover sheet: 3

SUBJECT: Alternate borehole locations - 2678 Coolidge, Oakland

MESSAGE: Attached you will find the following -
Site Vicinity Map of Approved Borehole
Locations (1 page) from the
Subsurface Investigation Work Plan (0298.W1)
and addendum (0298.L3)
for fuel leak site R00000357
Site Vicinity Map of Proposed
Borehole Locations (1 page)

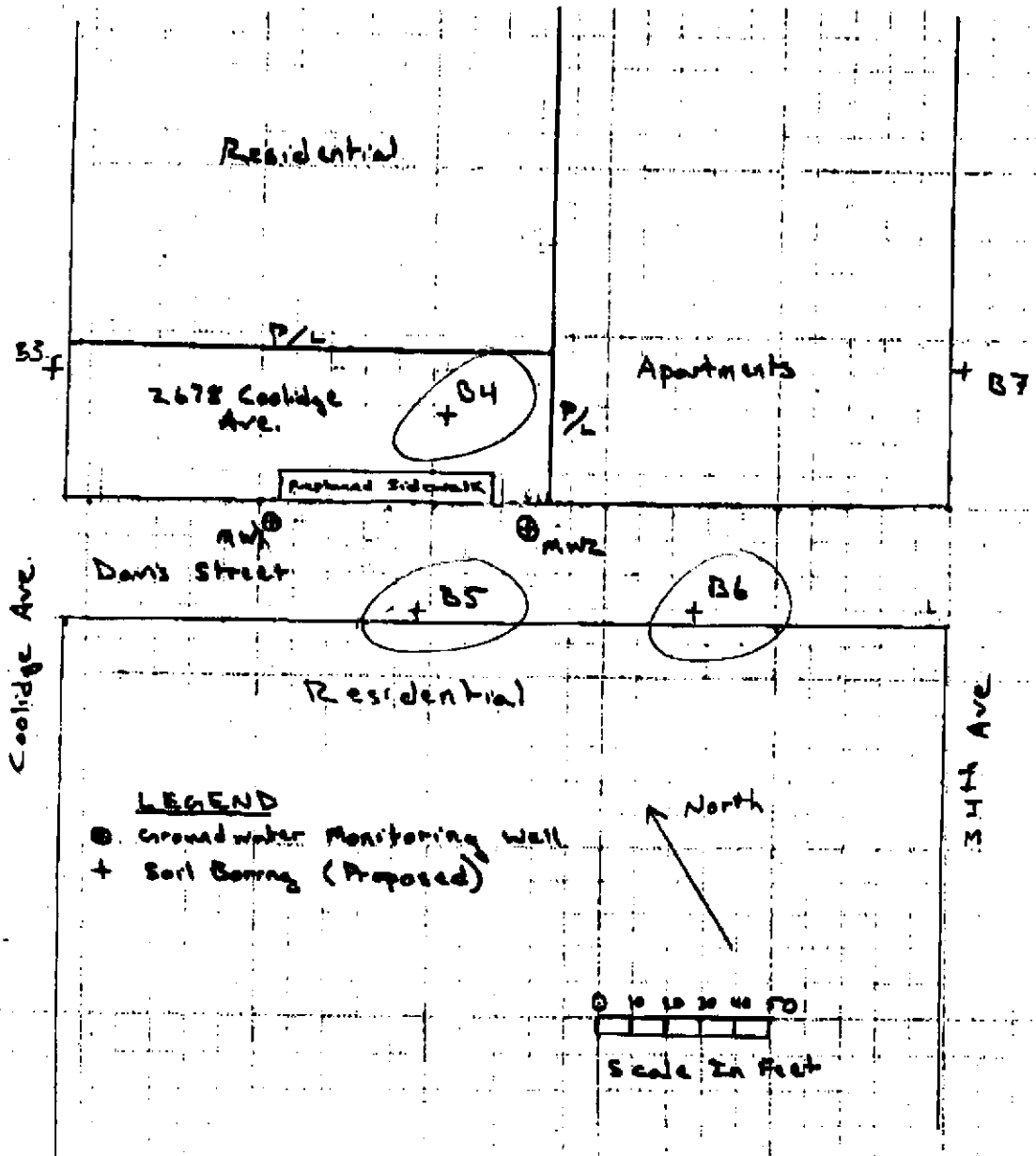
This submittal is due to contamination
encountered during drilling of borehole
B7 on 9/22/04.

If transmittal is incomplete, please call (510) 658-6916
P&D Environmental fax number: (510) 834-0152

DESTINATION FAX NUMBER: 510-337-9335

P & D ENVIRONMENTAL

A Division of Paul H. King, Inc.
4020 Panama Court
Oakland, CA 94611
(510) 658-6916



Based Map Prepared
By P&D Environmental
Using A Rolatope
January 18, 2003

Approved Borehole Locations
Figure 3
SITE VICINITY MAP
2678 Coolidge Ave.
Oakland, CA

(boreholes to be moved
are circled)

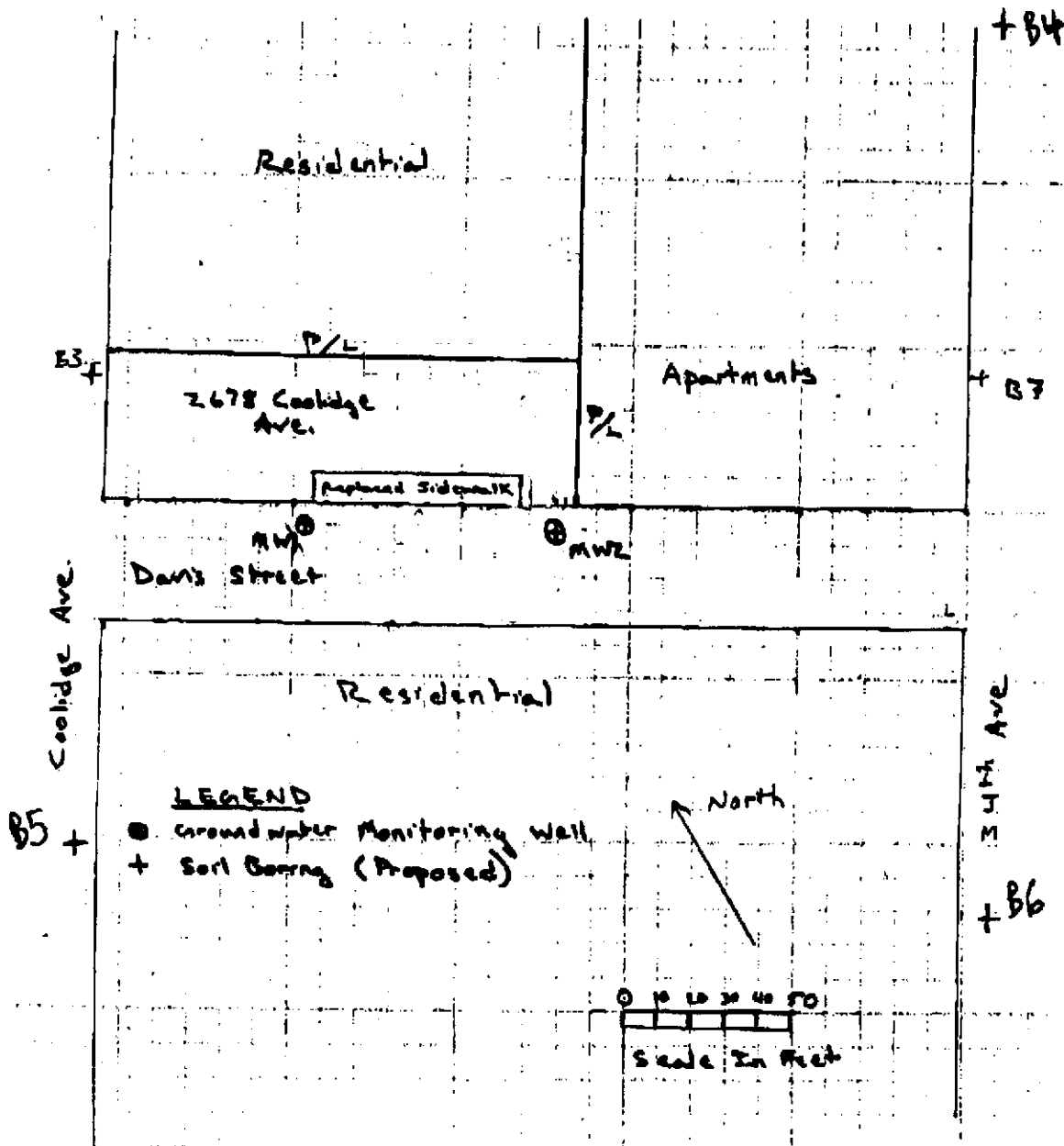
P & D ENVIRONMENTAL

A Division of Paul H. King, Inc.

4020 Panama Court

Oakland, CA 94611

(510) 658-6916



Based Map Prepared
 By P&D Environmental
 Using A Rolatope
 January 18, 2003

Proposed Borehole Locations
 Figure 3
 SITE VICINITY MAP
 2678 Coolidge Ave.
 Oakland, CA