

ENVIRONMENTAL
PROTECTION

99 APR 12 PM 3: 57



Chevron

April 3, 1999

Ms. Susan Hugo
Alameda County Health Care Services
Department of Environmental Health
1131 Harbor Bay Parkway, Suite 250
Alameda, CA 94502-6577

Chevron Products Company
6001 Bollinger Canyon Road
Building L, Room 1110
PO Box 6004
San Ramon, CA 94583-0904

Philip R. Briggs
Project Manager
Site Assessment & Remediation
Phone 925 842-9136
Fax 925 842-8370

**Re: Former Chevron Service Station #9-3864
5101 Telegraph Avenue, Oakland, CA**

Dear Ms. Hugo:

Enclosed is the Fourth Quarter Groundwater Monitoring Report for 1998 that was prepared by our consultant Blaine Tech Services, Inc. for the above noted site. Ground water samples were collected and analyzed for TPH-g, BTEX and MtBE constituents. Monitoring wells C-1, C-2 and C-4 have been abandoned. Note that title to monitoring well MW-4 has been transferred to Tri-Star Partnership, Inc., effective July 14, 1998, and will not be sampled in the future by Chevron.

Concentrations were below method detection limits for all constituents in monitoring wells MW-1, MW-2 and MW-5, while the benzene constituent increased in monitoring wells C-3 and MW-3 from the previous sampling event.

Depth to ground water varied from 11.44 feet to 14.55 feet below grade, with a direction of flow southwesterly.

Chevron has previously requested in the last three cover letters, that monitoring wells MW-1, MW-2 and MW-5 be sampled annually and wells C-3 and MW-3 be sampled semi-annually. As wells MW-2 and MW-5 have been below method detection limits for all of the constituents in the last thirteen sampling events while well MW-1 has been below method detection limits for all constituents in the last thirteen sampling events except for one detection of MtBE at 2.6 ppb. It has also been noted that well MW-1 is up gradient of the site while wells MW-2 and MW-5 are cross gradient of the site. Chevron also requested your concurrence in the installation of oxygen releasing compounds (ORC's) into wells C-3 and MW-3 to accelerate the natural attenuation process.

April 3, 1999
Ms. Susan Hugo
Former Chevron Service Station #9-3864
Page 2

Chevron believes these changes are appropriate to make at this location and will proceed to implement them unless we receive a response from your office by May 7th. The annual monitoring will be conducted in the 1st quarter while the semi-annual monitoring will be conducted in the 1st and 3rd quarters.

If you have any questions or comments, call me at (925) 842-9136.

Sincerely,
CHEVRON PRODUCTS COMPANY



Philip R. Briggs
Site Assessment and Remediation Project Manger

Enclosure

Cc. Mr. Bette Owen, Chevron

Mr. Chuck Headlee
RWQCB- San Francisco Bay Region
2101 Webster Street, Suite 500
Oakland, CA 94612

Messrs. Howard Schindler, Saul Gevertz and Jon Eager
Temescal Triangle Investors
4179 Piedmont Avenue
Oakland, CA 94611

Mr. Breece Sloan
2057 Vanderslice Avenue
Walnut Creek, CA 94596

Mr. John Gwynn
Gwynn-Schiels & Associates
300 Lakeside Drive, Suite 1980
Oakland, CA 94612

BLAINE
TECH SERVICES



1680 ROGERS AVENUE
SAN JOSE, CALIFORNIA 95112-1105
(408) 573-7771 FAX
(408) 573-0555 PHONE

April 1, 1999

Phil Briggs
Chevron U.S.A. Products Company
P.O. Box 6004
San Ramon, CA 94583-0904

4th Quarter 1998 Monitoring at 9-3864

Fourth Quarter 1998 Groundwater Monitoring at
Former Chevron Service Station Number 9-3864
5101 Telegraph Avenue
Oakland, CA

Monitoring Performed on December 23, 1998

Groundwater Sampling Report 981223-G-3

This report covers the routine monitoring of groundwater wells at this Chevron facility. Blaine Tech Services, Inc.'s work at the site includes inspection, gauging, evacuation, purgewater containment, sample collection and sample handling in accordance with standard procedures that conform to Regional Water Quality Control Board requirements.

Routine field data collection includes depth to water, total well depth, thickness of any separate immiscible layer, water column volume, calculated volume of a three-case volume purge, elapsed evacuation time, total volume of water removed, and standard water parameter instrument readings. Sample material is collected, contained, stored, and transported to the laboratory in conformance with EPA standards. Purgewater is, likewise, collected and transported to McKittrick Waste Treatment Site for disposal.

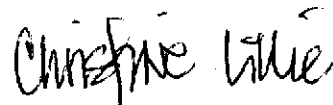
Basic field information is presented alongside analytical values excerpted from the laboratory report in the cumulative table of **WELL DATA AND ANALYTICAL RESULTS**. The full analytical report for the most recent samples is located in the **Analytical Appendix**. The table also contains new groundwater elevation calculations taken from the computer plotted gradient map which is located in the **Professional Engineering Appendix**.

At a minimum, Blaine Tech Services, Inc. field personnel are certified upon completion of a forty-hour Hazardous Materials and Emergency Response training course per 29 CFR 1910.120. Field personnel are also enrolled in annual eight hour refresher courses.

Blaine Tech Services, Inc. conducts sampling and documentation assignments of this type as an independent third party. In order to avoid compromising the objectivity necessary for the proper and disinterested performance of this work, Blaine Tech Services, Inc. concentrates on objective data collection and does not participate in the interpretation of analytical results, the definition of geological or hydrological conditions, the formulation of recommendations, or the marketing of remedial systems.

Please call if you have any questions.

Yours truly,

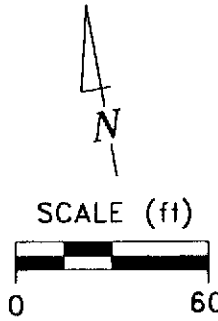
A handwritten signature in black ink that reads "Christine Lillie". The signature is written in a cursive, slightly slanted style.

Christine Lillie
project Coordinator

FPT/sb

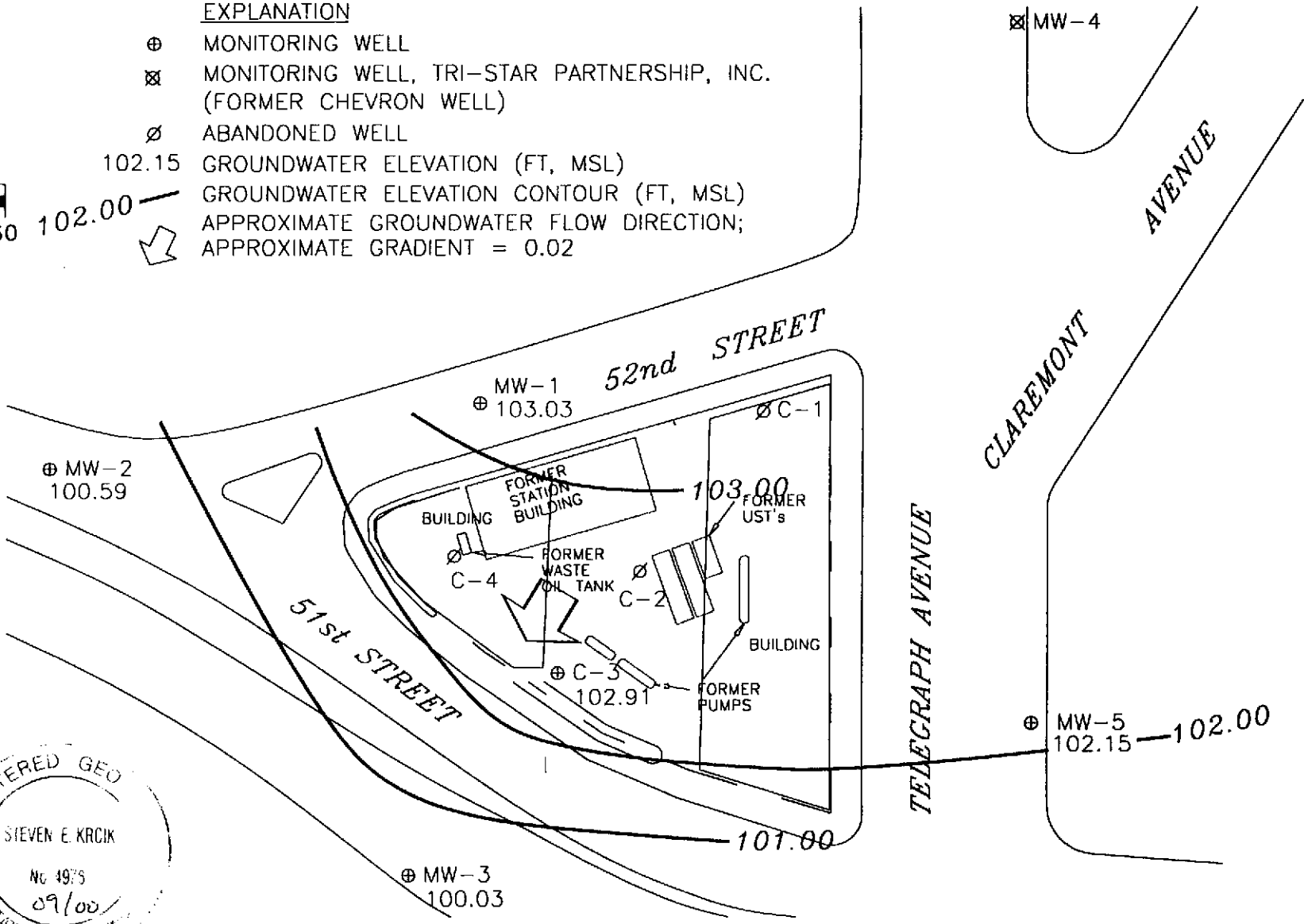
attachments: Professional Engineering Appendix
Cumulative Table of Well Data and Analytical Results
Analytical Appendix
Field Data Sheets

Professional Engineering Appendix



EXPLANATION

- ⊕ MONITORING WELL
- ⊗ MONITORING WELL, TRI-STAR PARTNERSHIP, INC. (FORMER CHEVRON WELL)
- ∅ ABANDONED WELL
- 102.15 GROUNDWATER ELEVATION (FT, MSL)
- GROUNDWATER ELEVATION CONTOUR (FT, MSL)
- ⇨ APPROXIMATE GROUNDWATER FLOW DIRECTION; APPROXIMATE GRADIENT = 0.02



Basemap from Geoconsultants, Inc.

PREPARED BY



Former Chevron Station 9-3864
5101 Telegraph Avenue
Oakland, California

GROUNDWATER ELEVATION CONTOUR MAP,
DECEMBER 23, 1998

FIGURE:
1
PROJECT:
DAC04

Table of Well Data and Analytical Results

Cumulative Table of Well Data and Analytical Results

Vertical Measurements are in feet.

Analytical results are in parts per billion (ppb)

DATE	Well Head Elev.	Ground Water Elev.	Depth To Water	Notes	TPH-Gasoline	Benzene	Toluene	Ethyl-Benzene	Xylene	MTBE
C-1										
12/06/90	117.45	102.11	15.34	--	1900	17	11	3.0	21	--
06/06/91	117.45	102.83	14.62	--	3400	21	15	11	18	--
12/04/91	117.45	102.97	14.48	--	2700	22	16	13	23	--
06/02/92	117.45	102.92	14.53	--	1900	170	170	13	83	--
09/16/92	117.45	102.52	14.93	--	810	5.8	5.7	2.0	6.3	--
12/21/92	117.45	103.72	13.73	--	75	2.4	2.9	1.4	4.7	--
03/11/93	117.45	103.62	13.83	--	150	2.4	20	3.3	23	--
06/11/93	117.45	103.26	14.19	--	400	4.3	2.3	1.0	3.5	--
09/13/93	117.45	102.85	14.60	--	4100	62	43	34	57	--
12/14/93	117.45	103.67	13.78	--	3100	9.5	4.5	1.2	11	--
03/16/94	117.45	103.44	14.01	--	410	6.3	3.1	1.3	4.5	--
06/17/94	117.45	102.90	14.55	--	3700	100	42	30	91	--
08/29/94	117.45	102.96	14.49	--	2600	15	<0.5	6.7	9.7	--
12/06/94	117.45	104.04	13.41	--	510	2.0	2.2	1.7	9.4	--
03/31/95	117.45	105.33	12.12	--	5440	9.0	2.3	2.0	3.6	--
06/24/95	117.45	103.45	14.00	--	260	5.8	1.0	0.94	0.88	--
09/12/95	117.45	103.42	14.03	--	650	14	1.1	1.6	2.4	--
12/29/95	117.45	104.50	12.95	--	990	32	6.3	4.0	3.2	46
02/29/96	117.45	105.27	12.18	--	840	2.5	<1.0	2.6	7.3	<5.0
06/26/96	117.45	103.72	13.73	--	290	3.6	0.73	1.0	1.1	9.9
09/12/96	117.45	103.32	14.13	--	1200	17	1.8	4.0	4.4	24
12/11/96	117.45	104.66	12.79	--	7700	<10	53	19	44	87
03/31/97	117.45	--	--	Abandoned	--	--	--	--	--	--

Cumulative Table of Well Data and Analytical Results

Vertical Measurements are in feet.

Analytical results are in parts per billion (ppb)

DATE	Well Head Elev.	Ground Water Elev.	Depth To Water	Notes	TPH-Gasoline	Benzene	Toluene	Ethyl-Benzene	Xylene	MTBE
C-2										
12/06/90	116.16	100.82	15.34	--	210	140	9.0	2.0	11	--
06/06/91	116.16	101.54	14.62	--	4800	340	23	19	23	--
12/04/91	116.16	100.73	15.43	--	3900	85	15	9.1	15	--
06/02/92	116.16	101.74	14.42	--	3300	76	9.2	14	15	--
09/16/92	116.16	101.35	14.81	--	3000	16	15	3.4	7.5	--
12/21/92	116.16	102.79	13.37	--	2200	21	12	7.1	15	--
03/11/93	116.16	102.69	13.47	--	2200	33	24	12	25	--
06/11/93	116.16	102.18	13.98	--	2600	21	25	11	26	--
09/13/93	116.16	101.61	14.55	--	2100	31	25	18	39	--
12/14/93	116.16	102.46	13.70	--	3800	<2.5	24	12	20	--
03/16/94	116.16	102.51	13.65	--	2600	12	15	10	17	--
06/17/94	116.16	102.87	13.29	--	2400	17	19	28	71	--
08/29/94	116.16	111.60	4.56	--	3000	29	15	20	4.2	--
12/06/94	116.16	102.98	13.18	--	1900	7.9	30	14	31	--
03/31/95	116.16	104.10	12.06	--	890	<1.3	<1.3	2.6	<1.3	--
06/24/95	116.16	102.19	13.97	--	730	4.8	<0.5	5.4	0.96	--
09/12/95	116.16	102.28	13.88	--	1600	<2.5	<2.5	5.4	<2.5	--
12/29/95	116.16	103.31	12.85	--	1000	9.1	2.7	8.7	2.7	19
02/29/96	116.16	104.09	12.07	--	850	<2.5	<2.5	8.7	11	<12
06/26/96	116.16	102.50	13.66	--	2500	14	<5.0	13	6.3	<25
09/12/96	116.16	102.25	13.91	--	1800	26	19	17	31	37
12/11/96	116.16	103.82	12.34	--	2800	<5.0	34	14	<5.0	41
03/31/97	116.16	--	--	Abandoned	--	--	--	--	--	--

Cumulative Table of Well Data and Analytical Results

Vertical Measurements are in feet.

Analytical results are in parts per billion (ppb)

DATE	Well Head Elev.	Ground Water Elev.	Depth To Water	Notes	TPH-Gasoline	Benzene	Toluene	Ethyl-Benzene	Xylene	MTBE
C-3										
12/06/90	115.70	98.84	16.86	--	210	2.0	<0.5	<0.5	1.0	--
12/06/90	115.70	--	--	Duplicate	220	2.0	0.6	<0.5	2.0	--
06/06/91	115.70	100.01	15.69	--	6400	310	21	16	21	--
09/16/92	115.70	99.81	15.89	--	7100	130	26	12	30	--
12/04/91	115.70	100.32	15.38	--	5100	120	18	17	20	--
06/02/92	115.70	100.30	15.40	--	6700	140	44	17	37	--
12/21/92	115.70	101.79	13.91	--	13,000	390	360	100	410	--
03/11/93	115.70	101.95	13.75	--	5100	86	20	12	23	--
06/11/93	115.70	101.03	14.67	--	7200	91	38	19	38	--
09/13/93	115.70	100.17	15.53	--	6800	100	52	41	75	--
12/14/93	115.70	101.30	14.40	--	8600	74	23	18	36	--
03/16/94	115.70	101.44	14.26	--	6000	100	42	27	30	--
06/17/94	115.70	100.60	15.10	--	15,000	170	120	120	270	--
08/29/94	115.70	100.30	15.40	--	26,000	51	<0.5	58	107	--
12/06/94	115.70	101.90	13.80	--	34,000	88	140	98	390	--
03/31/95	115.70	102.91	12.79	--	2800	42	<5.0	<5.0	6.6	--
06/24/95	115.70	100.84	14.86	--	5200	34	<10	<10	13	--
09/12/95	115.70	100.76	14.94	--	7000	45	<10	28	42	--
12/29/95	115.70	102.12	13.58	--	5100	20	<10	<10	19	<50
02/29/96	115.70	102.88	12.82	--	2600	15	<5.0	17	16	<25
06/26/96	115.70	101.32	14.38	--	4400	<10	<10	<10	<10	<50
09/12/96	115.70	100.75	14.95	--	5800	73	22	18	17	61
12/11/96	115.70	103.08	12.62	--	8800	81	<20	<20	37	200
03/31/97	115.70	100.70	15.00	--	8100	38	62	30	42	38
06/29/97	115.70	100.08	15.62	--	5800	<10	<10	<10	67	<50
09/30/97	115.70	100.70	15.00	--	6200	<10	28	21	27	130
12/12/97	115.70	103.68	12.02	--	330	1.6	1.1	<1.0	3.4	<5.0
02/19/98	115.70	103.26	12.44	--	110	1.7	<0.5	<0.5	0.51	<2.5
06/16/98	115.70	102.29	13.41	--	7400	63	16	<10	<10	170
08/31/98	115.70	101.70	14.00	--	4400	6.4	<2.5	5.4	16	15
12/23/98	115.70	102.91	12.79	--	11,000	83	37	69	76	86

Cumulative Table of Well Data and Analytical Results

Vertical Measurements are in feet.

Analytical results are in parts per billion (ppb)

DATE	Well Head Elev.	Ground Water Elev.	Depth To Water	Notes	TPH-Gasoline	Benzene	Toluene	Ethyl-Benzene	Xylene	MTBE
C-4										
12/06/90	116.10	98.42	17.68	--	<50	<0.5	<0.5	<0.5	<0.5	--
12/18/90	116.10	--	--	--	<50	<0.5	<0.5	<0.5	<0.5	--
06/06/91	116.10	99.61	16.49	--	<50	1.0	1.0	<0.5	0.7	--
12/04/91	116.10	99.28	16.82	--	70	6.5	9.8	1.7	8.6	--
06/02/92	116.10	99.18	16.92	--	70	3.0	4.4	1.8	9.0	--
09/16/92	116.10	98.39	17.71	--	<50	1.4	1.8	<0.5	1.1	--
12/21/92	116.10	100.74	15.36	--	<50	0.6	0.7	<0.5	1.5	--
03/11/93	116.10	100.61	15.49	--	<50	<0.5	<0.5	<0.5	<1.5	--
06/11/93	116.10	99.83	16.27	--	52	0.9	3.1	0.7	3.8	--
09/13/93	116.10	98.92	17.18	--	64	0.9	1.0	<0.5	1.7	--
12/14/93	116.10	101.03	15.07	--	<50	<0.5	0.8	<0.5	0.7	--
03/16/94	116.10	100.19	15.91	--	<50	<0.5	1.0	<0.5	0.8	--
06/17/94	116.10	99.46	16.64	--	230	0.6	2.2	2.2	11	--
08/29/94	116.10	99.05	17.05	--	<50	<0.5	<0.5	<0.5	<0.5	--
12/06/94	116.10	101.52	14.58	--	<50	<0.5	<0.5	<0.5	<0.5	--
03/31/95	116.10	102.26	13.84	--	<50	<0.5	<0.5	<0.5	<0.5	--
06/24/95	116.10	100.05	16.05	--	<50	<0.5	<0.5	<0.5	<0.5	--
09/12/95	116.10	99.87	16.23	--	<50	<0.5	<0.5	<0.5	<0.5	--
12/29/95	116.10	101.35	14.75	--	<50	<0.5	<0.5	<0.5	<0.5	<2.5
02/29/96	116.10	102.40	13.70	--	<50	<0.5	<0.5	<0.5	<0.5	<2.5
06/26/96	116.10	100.30	15.80	--	<50	<0.5	<0.5	<0.5	<0.5	<2.5
09/12/96	116.10	99.67	16.43	--	<50	<0.5	<0.5	<0.5	<0.5	<2.5
12/11/96	116.10	103.18	12.92	--	<50	<0.5	<0.5	<0.5	<0.5	<2.5
03/31/97	116.10	--	--	Abandoned	--	--	--	--	--	--

Cumulative Table of Well Data and Analytical Results

Vertical Measurements are in feet.

Analytical results are in parts per billion (ppb)

DATE	Well Head Elev.	Ground Water Elev.	Depth To Water	Notes	TPH-Gasoline	Benzene	Toluene	Ethyl-Benzene	Xylene	MTBE
MW-1										
09/20/93	115.05	102.37	12.68	--	<50	<0.5	<0.5	<0.5	<1.5	--
12/14/93	115.05	105.01	10.04	--	<50	<0.5	<0.5	<0.5	<0.5	--
03/16/94	115.05	103.10	11.95	--	<50	<0.5	1.7	<0.5	2.1	--
06/17/94	115.05	102.51	12.54	--	350	1.2	3.7	2.0	12	--
08/29/94	115.05	101.98	13.07	--	<50	<0.5	<0.5	<0.5	<0.5	--
12/06/94	115.05	104.45	10.60	--	140	0.9	2.8	1.1	4.2	--
03/31/95	115.05	104.74	10.31	--	<50	<0.5	<0.5	<0.5	<0.5	--
06/24/95	115.05	102.44	12.61	--	<50	<0.5	<0.5	<0.5	<0.5	--
09/12/95	115.05	102.00	13.05	--	<50	<0.5	<0.5	<0.5	<0.5	--
02/02/96	115.05	106.19	8.86	--	<50	<0.5	<0.5	<0.5	<0.5	<2.5
02/29/96	115.05	105.39	9.66	--	<50	<0.5	<0.5	<0.5	<0.5	<2.5
06/26/96	115.05	102.85	12.20	--	<50	<0.5	<0.5	<0.5	<0.5	<2.5
09/12/96	115.05	101.55	13.50	--	<50	<0.5	<0.5	<0.5	<0.5	<2.5
12/11/96	115.05	105.90	9.15	--	<50	<0.5	<0.5	<0.5	<0.5	<2.5
03/31/97	115.05	102.30	12.75	--	<50	<0.5	<0.5	<0.5	<0.5	<2.5
06/29/97	115.05	102.01	13.04	--	<50	<0.5	<0.5	<0.5	<0.5	<2.5
09/30/97	115.05	101.80	13.25	--	<50	<0.5	<0.5	<0.5	<0.5	<2.5
12/12/97	115.05	106.06	8.99	--	<50	<0.5	<0.5	<0.5	<0.5	<2.5
02/19/98	115.05	105.64	9.41	--	<50	<0.5	<0.5	<0.5	<0.5	<2.5
06/16/98	115.02	103.48	11.54	--	<50	<0.5	<0.5	<0.5	<0.5	2.6
08/31/98	115.02	102.51	12.51	--	<50	<0.5	<0.5	<0.5	<0.5	<2.5
12/23/98	115.02	103.03	11.99	--	<50	<0.5	<0.5	<0.5	<0.5	<2.5

Cumulative Table of Well Data and Analytical Results

Vertical Measurements are in feet.

Analytical results are in parts per billion (ppb)

DATE	Well Head Elev.	Ground Water Elev.	Depth To Water	Notes	TPH-Gasoline	Benzene	Toluene	Ethyl-Benzene	Xylene	MTBE
MW-2										
09/20/93	112.08	99.93	12.15	--	<50	<0.5	<0.5	<0.5	<1.5	--
12/14/93	112.08	97.36	14.72	--	<50	<0.5	<0.5	<0.5	<0.5	--
03/16/94	112.08	100.92	11.16	--	<50	<0.5	1.1	<0.5	0.9	--
06/17/94	112.08	100.41	11.67	--	330	1.4	3.3	1.9	11	--
08/29/94	112.08	100.08	12.00	--	<50	<0.5	<0.5	<0.5	<0.5	--
12/06/94	112.08	102.57	9.51	--	<50	<0.5	<0.5	<0.5	<0.5	--
03/31/95	112.08	103.24	8.84	--	<50	<0.5	<0.5	<0.5	<0.5	--
06/24/95	112.08	100.44	11.64	--	<50	<0.5	<0.5	<0.5	<0.5	--
09/12/95	112.08	100.00	12.08	--	<50	<0.5	<0.5	<0.5	<0.5	--
12/29/95	112.08	101.58	10.50	--	<50	<0.5	<0.5	<0.5	<0.5	<2.5
02/29/96	112.08	104.08	8.00	--	<50	<0.5	<0.5	<0.5	<0.5	<2.5
06/26/96	112.08	100.58	11.50	--	<50	<0.5	<0.5	<0.5	<0.5	<2.5
09/12/96	112.08	99.81	12.27	--	<50	<0.5	<0.5	<0.5	<0.5	<2.5
12/11/96	112.08	104.17	7.91	--	<50	<0.5	<0.5	<0.5	<0.5	<2.5
03/31/97	112.08	100.20	11.88	--	<50	<0.5	<0.5	<0.5	<0.5	<2.5
06/29/97	112.08	99.89	12.19	--	<50	<0.5	<0.5	<0.5	<0.5	<2.5
09/30/97	112.08	99.46	12.62	--	<50	<0.5	<0.5	<0.5	<0.5	<2.5
12/12/97	112.08	102.85	9.23	--	<50	<0.5	<0.5	<0.5	<0.5	<2.5
02/19/98	112.08	104.87	7.21	--	<50	<0.5	<0.5	<0.5	<0.5	<2.5
06/16/98	112.03	101.10	10.93	--	<50	<0.5	<0.5	<0.5	<0.5	<2.5
08/31/98	112.03	99.69	12.34	--	<50	<0.5	<0.5	<0.5	<0.5	<2.5
12/23/98	112.03	100.59	11.44	--	<50	<0.5	<0.5	<0.5	<0.5	<2.5

Cumulative Table of Well Data and Analytical Results

Vertical Measurements are in feet.

Analytical results are in parts per billion (ppb)

DATE	Well Head Elev.	Ground Water Elev.	Depth To Water	Notes	TPH-Gasoline	Benzene	Toluene	Ethyl-Benzene	Xylene	MTBE
MW-3										
09/20/93	113.67	97.25	16.42	--	6600	400	11	32	23	--
12/14/93	113.67	98.95	14.72	--	8400	390	9.4	13	<2.5	--
03/16/94	113.67	98.45	15.22	--	6900	260	30	32	27	--
06/17/94	113.67	97.62	16.05	--	10,000	190	61	58	190	--
08/29/94	113.67	97.44	16.23	--	7200	74	9.8	26	24	--
12/06/94	113.67	99.35	14.32	--	13,000	610	86	88	140	--
03/31/95	113.67	99.98	13.69	--	4300	120	<10	12	<10	--
06/24/95	113.67	98.02	15.65	--	6200	210	24	29	12	--
09/12/95	113.67	97.68	15.99	--	7200	190	<20	<20	<20	--
12/29/95	113.67	99.67	14.00	--	7100	200	<10	45	24	<50
02/29/96	113.67	100.91	12.76	--	1200	30	<5.0	<5.0	<5.0	<25
06/26/96	113.67	98.44	15.23	--	7900	180	<20	35	28	240
09/12/96	113.67	97.73	15.94	--	11,000	150	<5.0	35	28	170
12/11/96	113.67	99.86	13.81	--	7500	75	8.8	30	45	110
03/31/97	113.67	98.23	15.44	--	8700	100	<10	20	23	50
06/29/97	113.67	97.99	15.68	--	9300	120	28	22	19	150
09/30/97	113.67	97.76	15.91	--	8200	78	<10	22	25	96
12/12/97	113.67	100.82	12.85	--	68	1.8	<0.5	<0.5	<0.5	<2.5
02/19/98	113.67	100.41	13.26	--	220	5.6	1.5	<0.5	<0.5	6.1
06/16/98	113.63	99.12	14.51	--	7500	97	21	21	27	160
08/31/98	113.63	98.62	15.01	--	7600	24	<2.5	9.5	16	38
12/23/98	113.63	100.03	13.60	--	5800	69	<50	<50	<50	<250

Cumulative Table of Well Data and Analytical Results

Vertical Measurements are in feet.

Analytical results are in parts per billion (ppb)

DATE	Well Head Elev.	Ground Water Elev.	Depth To Water	Notes	TPH-Gasoline	Benzene	Toluene	Ethyl-Benzene	Xylene	MTBE
MW-4										
09/20/93	118.10	107.17	10.93	--	5800	16	4.2	35	48	--
12/14/93	118.10	108.33	9.77	--	7100	19	6.5	24	35	--
03/16/94	118.10	107.99	10.11	--	8500	83	43	60	70	--
06/17/94	118.10	107.20	10.90	--	21,000	150	20	140	350	--
08/29/94	118.10	107.28	10.82	--	10,000	86	71	44	85	--
12/06/94	118.10	108.70	9.40	--	13,000	68	56	67	110	--
03/31/95	118.10	109.31	8.79	--	6700	100	9.4	26	23	--
06/24/95	118.10	107.60	10.50	--	6300	<20	<20	<20	24	--
09/12/95	118.10	107.90	10.20	--	7100	65	16	<10	21	--
12/29/95	118.10	108.86	9.24	--	3300	<10	<10	12	14	720
02/29/96	118.10	111.85	6.25	--	5100	<10	37	23	21	85
06/26/96	118.10	107.92	10.18	--	6800	<20	<20	<20	<20	<100
09/12/96	118.10	107.53	10.57	--	13,000	150	<10	38	35	240
12/11/96	118.10	109.39	8.71	--	26,000	<20	<20	<20	170	<100
03/31/97	118.10	107.18	10.92	--	12,000	120	74	45	70	240
06/29/97	118.10	106.43	11.67	--	8800	24	<10	35	36	62
09/30/97	118.10	107.20	10.90	--	10,000	<10	<10	37	35	72
12/12/97	118.10	105.16	12.94	--	4600	95	41	20	25	91
02/19/98	118.10	110.33	7.77	--	5400	87	16	32	31	110
06/16/98	118.08	107.82	10.26	*	10,000	<20	<20	35	37	150

NO LONGER MONITORED OR SAMPLED

* Transfer of title to Tri-Star Partnership, Inc. effective July 14, 1998.

Cumulative Table of Well Data and Analytical Results

Vertical Measurements are in feet.

Analytical results are in parts per billion (ppb)

DATE	Well Head Elev.	Ground Water Elev.	Depth To Water	Notes	TPH-Gasoline	Benzene	Toluene	Ethyl-Benzene	Xylene	MTBE
MW-5										
09/20/93	116.74	101.43	15.31	--	590	25	1.8	0.6	2.0	--
12/14/93	116.74	102.19	14.55	--	210	11	6.3	2.3	6.1	--
03/16/94	116.74	101.77	14.97	--	270	12	16	4.8	17	--
06/17/94	116.74	101.36	15.38	--	220	24	17	6.7	28	--
08/29/94	116.74	101.54	15.20	--	1000	<0.5	<0.5	<0.5	<0.5	--
12/06/94	116.74	102.09	14.65	--	110	9.2	9.7	2.2	11	--
03/31/95	116.74	103.04	13.70	--	<50	<0.5	<0.5	<0.5	<0.5	--
06/24/95	116.74	101.95	14.79	--	<50	<0.5	<0.5	<0.5	<0.5	--
09/12/95	116.74	102.15	14.59	--	<50	<0.5	<0.5	<0.5	<0.5	--
12/29/95	116.74	101.76	14.98	--	<50	<0.5	<0.5	<0.5	<0.5	<2.5
02/29/96	116.74	103.07	13.67	--	<50	<0.5	<0.5	<0.5	<0.5	<2.5
06/26/96	116.74	102.50	14.24	--	<50	<0.5	<0.5	<0.5	<0.5	<2.5
09/12/96	116.74	102.12	14.62	--	<50	<0.5	<0.5	<0.5	<0.5	<2.5
12/11/96	116.74	102.93	13.81	--	<50	<0.5	<0.5	<0.5	<0.5	<2.5
03/31/97	116.74	101.29	15.45	--	<50	<0.5	<0.5	<0.5	<0.5	<2.5
06/29/97	116.74	102.07	14.67	--	<50	<0.5	<0.5	<0.5	<0.5	<2.5
09/30/97	116.74	101.89	14.85	--	<50	<0.5	<0.5	<0.5	<0.5	<2.5
12/12/97	116.74	102.99	13.75	--	<50	<0.5	<0.5	<0.5	<0.5	<2.5
02/19/98	116.74	103.68	13.06	--	<50	<0.5	<0.5	<0.5	<0.5	<2.5
06/16/98	116.70	102.35	14.35	--	<50	<0.5	<0.5	<0.5	<0.5	<2.5
08/31/98	116.70	101.54	15.16	--	<50	<0.5	<0.5	<0.5	<0.5	<2.5
12/23/98	116.70	102.15	14.55	--	<50	<0.5	<0.5	<0.5	<0.5	<2.5

Cumulative Table of Well Data and Analytical Results

Vertical Measurements are in feet.

Analytical results are in parts per billion (ppb)

DATE	Well Head Elev.	Ground Water Elev.	Depth To Water	Notes	TPH-Gasoline	Benzene	Toluene	Ethyl-Benzene	Xylene	MTBE
TRIP BLANK										
12/06/90	--	--	--	--	<50	<0.5	<0.5	<0.5	<0.5	--
12/18/90	--	--	--	--	<50	<0.5	<0.5	<0.5	<0.5	--
06/06/91	--	--	--	--	<50	<0.5	<0.5	<0.5	<0.5	--
12/04/91	--	--	--	--	<50	<0.5	<0.5	<0.5	<0.5	--
06/02/92	--	--	--	--	<50	<0.5	<0.5	<0.5	<0.5	--
09/16/92	--	--	--	--	<50	<0.5	<0.5	<0.5	<0.5	--
12/21/92	--	--	--	--	<50	<0.5	<0.5	<0.5	<0.5	--
03/11/93	--	--	--	--	<50	<0.5	<0.5	<0.5	<1.5	--
06/11/93	--	--	--	--	<50	<0.5	<0.5	<0.5	<1.5	--
09/13/93	--	--	--	--	<50	<0.5	<0.5	<0.5	<1.5	--
12/14/93	--	--	--	--	<50	<0.5	<0.5	<0.5	<0.5	--
03/16/94	--	--	--	--	<50	<0.5	<0.5	<0.5	<0.5	--
06/17/94	--	--	--	--	<50	<0.5	<0.5	<0.5	<0.5	--
08/29/94	--	--	--	--	<50	<0.5	<0.5	<0.5	<0.5	--
12/06/94	--	--	--	--	<50	<0.5	<0.5	<0.5	<0.5	--
03/31/95	--	--	--	--	<50	<0.5	<0.5	<0.5	<0.5	--
06/24/95	--	--	--	--	<50	<0.5	<0.5	<0.5	<0.5	--
09/12/95	--	--	--	--	<50	<0.5	<0.5	<0.5	<0.5	--
12/29/95	--	--	--	--	<50	<0.5	<0.5	<0.5	<0.5	--
02/29/96	--	--	--	--	<50	<0.5	<0.5	<0.5	<0.5	<2.5
06/26/96	--	--	--	--	<50	<0.5	<0.5	<0.5	<0.5	<2.5
09/12/96	--	--	--	--	<50	<0.5	<0.5	<0.5	<0.5	--
12/11/96	--	--	--	--	<50	<0.5	<0.5	<0.5	<0.5	<2.5
03/31/97	--	--	--	--	<50	<0.5	<0.5	<0.5	<0.5	<2.5
06/29/97	--	--	--	--	<50	<0.5	<0.5	<0.5	<0.5	<2.5
09/30/97	--	--	--	--	<50	<0.5	<0.5	<0.5	<0.5	<2.5
12/12/97	--	--	--	--	<50	<0.5	<0.5	<0.5	<0.5	<2.5
02/19/98	--	--	--	--	<50	<0.5	<0.5	<0.5	<0.5	<2.5
06/16/98	--	--	--	--	<50	<0.5	<0.5	<0.5	<0.5	<2.5
08/31/98	--	--	--	--	<50	<0.5	<0.5	<0.5	<0.5	<2.5
12/23/98	--	--	--	--	<50	<0.5	<0.5	<0.5	<0.5	2.9

Note: Blaine Tech Services, Inc. began routine monitoring of the groundwater wells at this site on March 31, 1995. Earlier field data and analytical results provided by Sierra Environmental.

ABBREVIATIONS:

TPH = Total Petroleum Hydrocarbons
 MTBE = Methyl t-butyl Ether

Analytical Appendix



Sequoia Analytical

680 Chesapeake Drive
404 N. Wiger Lane
819 Striker Avenue, Suite 8
1455 McDowell Blvd. North, Ste. D

Redwood City, CA 94063
Walnut Creek, CA 94598
Sacramento, CA 95834
Petaluma, CA 94954

(650) 364-9600
(925) 988-9600
(916) 921-9600
(707) 792-1865

FAX (650) 364-9233
FAX (925) 988-9673
FAX (916) 921-0100
FAX (707) 792-0342

Blaine Tech Services
1680 Rogers Avenue
San Jose, CA 95112
Attention: Christine Lillie

Project: Chevron 9-3864/981223-G3

Enclosed are the results from samples received at Sequoia Analytical on December 28, 1998.
The requested analyses are listed below:

<u>SAMPLE #</u>	<u>SAMPLE DESCRIPTION</u>	<u>DATE COLLECTED</u>	<u>TEST METHOD</u>
9812G94 -01	LIQUID, C-3	12/23/98	TPPH/BTEX/MTBE (Concord)
9812G94 -02	LIQUID, MW-1	12/23/98	TPPH/BTEX/MTBE (Concord)
9812G94 -03	LIQUID, MW-2	12/23/98	TPPH/BTEX/MTBE (Concord)
9812G94 -04	LIQUID, MW-3	12/23/98	TPPH/BTEX/MTBE (Concord)
9812G94 -05	LIQUID, MW-5	12/23/98	TPPH/BTEX/MTBE (Concord)
9812G94 -06	LIQUID, TB	12/23/98	TPPH/BTEX/MTBE (Concord)

Please contact me if you have any questions. In the meantime, thank you for the opportunity to work with you on this project.

Very truly yours,

SEQUOIA ANALYTICAL

Mike Gregory
Project Manager





Blaine Tech Services 1680 Rogers Avenue San Jose, CA 95112 Attention: Christine Lillie	Client Proj. ID: Chevron 9-3864/981223-G3 Sample Descript: C-3 Matrix: LIQUID Analysis Method: 8015Mod/8020 Lab Number: 9812G94-01	Sampled: 12/23/98 Received: 12/28/98 Analyzed: 01/07/99 Reported: 01/11/99
---	--	---

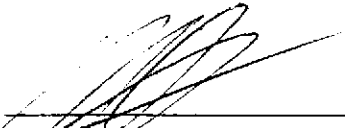
QC Batch Number: GC010799802009A
Instrument ID: HP9

Total Purgeable Hydrocarbons (TPPH) with BTEX and MTBE

Analyte	Detection Limit ug/L	Sample Results ug/L
TPPH as Gas	1000	11000
Methyl t-Butyl Ether	50	86
Benzene	10	83
Toluene	10	37
Ethyl Benzene	10	69
Xylenes (Total)	10	76
Chromatogram Pattern:		GAS
Surrogates	Control Limits %	% Recovery
Trifluorotoluene	70 130	99

Analytes reported as N.D. were not present above the stated limit of detection.

SEQUOIA ANALYTICAL - ELAP #1271



Mike Gregory
Project Manager





Blaine Tech Services 1680 Rogers Avenue San Jose, CA 95112	Client Proj. ID: Chevron 9-3864/981223-G3 Sample Descript: MW-1 Matrix: LIQUID Analysis Method: 8015Mod/8020 Lab Number: 9812G94-02	Sampled: 12/23/98 Received: 12/28/98 Analyzed: 01/06/99 Reported: 01/11/99
Attention: Christine Lillie		

QC Batch Number: GC010699802009A
Instrument ID: HP9

Total Purgeable Hydrocarbons (TPPH) with BTEX and MTBE

Analyte	Detection Limit ug/L	Sample Results ug/L
TPPH as Gas	50	N.D.
Methyl t-Butyl Ether	2.5	N.D.
Benzene	0.50	N.D.
Toluene	0.50	N.D.
Ethyl Benzene	0.50	N.D.
Xylenes (Total)	0.50	N.D.
Chromatogram Pattern:		
Surrogates	Control Limits %	% Recovery
Trifluorotoluene	70 130	97

Analytes reported as N.D. were not present above the stated limit of detection.

SEQUOIA ANALYTICAL - ELAP #1271


Mike Gregory
Project Manager





Blaine Tech Services 1680 Rogers Avenue San Jose, CA 95112 Attention: Christine Lillie	Client Proj. ID: Chevron 9-3864/981223-G3 Sample Descript: MW-2 Matrix: LIQUID Analysis Method: 8015Mod/8020 Lab Number: 9812G94-03	Sampled: 12/23/98 Received: 12/28/98 Analyzed: 01/06/99 Reported: 01/11/99
---	---	---

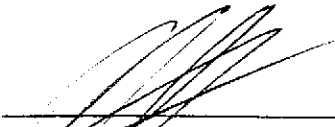
QC Batch Number: GC010699802009A
Instrument ID: HP9

Total Purgeable Hydrocarbons (TPPH) with BTEX and MTBE

Analyte	Detection Limit ug/L	Sample Results ug/L
TPPH as Gas	50	N.D.
Methyl t-Butyl Ether	2.5	N.D.
Benzene	0.50	N.D.
Toluene	0.50	N.D.
Ethyl Benzene	0.50	N.D.
Xylenes (Total)	0.50	N.D.
Chromatogram Pattern:		
Surrogates	Control Limits %	% Recovery
Trifluorotoluene	70 130	97

Analytes reported as N.D. were not present above the stated limit of detection.

SEQUOIA ANALYTICAL - ELAP #1271



Mike Gregory
Project Manager





Blaine Tech Services 1680 Rogers Avenue San Jose, CA 95112	Client Proj. ID: Chevron 9-3864/981223-G3 Sample Descript: MW-3 Matrix: LIQUID Analysis Method: 8015Mod/8020 Lab Number: 9812G94-04	Sampled: 12/23/98 Received: 12/28/98 Analyzed: 01/06/99 Reported: 01/11/99
Attention: Christine Lillie		

QC Batch Number: GC010699802009A
Instrument ID: HP9

Total Purgeable Hydrocarbons (TPPH) with BTEX and MTBE

Analyte	Detection Limit ug/L	Sample Results ug/L
TPPH as Gas	5000	5800
Methyl t-Butyl Ether	250	N.D.
Benzene	50	69
Toluene	50	N.D.
Ethyl Benzene	50	N.D.
Xylenes (Total)	50	N.D.
Chromatogram Pattern: Weathered Gas		C6-C12
Surrogates	Control Limits %	% Recovery
Trifluorotoluene	70 130	93

Analytes reported as N.D. were not present above the stated limit of detection.

SEQUOIA ANALYTICAL - ELAP #1271


Mike Gregory
Project Manager





Blaine Tech Services 1680 Rogers Avenue San Jose, CA 95112	Client Proj. ID: Chevron 9-3864/981223-G3 Sample Descript: MW-5 Matrix: LIQUID Analysis Method: 8015Mod/8020 Lab Number: 9812G94-05	Sampled: 12/23/98 Received: 12/28/98 Analyzed: 01/06/99 Reported: 01/11/99
Attention: Christine Lillie		

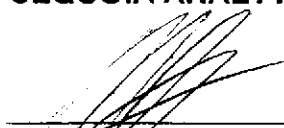
QC Batch Number: GC010699802009A
Instrument ID: HP9

Total Purgeable Hydrocarbons (TPPH) with BTEX and MTBE

Analyte	Detection Limit ug/L	Sample Results ug/L
TPPH as Gas	50	N.D.
Methyl t-Butyl Ether	2.5	N.D.
Benzene	0.50	N.D.
Toluene	0.50	N.D.
Ethyl Benzene	0.50	N.D.
Xylenes (Total)	0.50	N.D.
Chromatogram Pattern:		
Surrogates	Control Limits %	% Recovery
Trifluorotoluene	70 130	98

Analytes reported as N.D. were not present above the stated limit of detection.

SEQUOIA ANALYTICAL - ELAP #1271



Mike Gregory
Project Manager





Sequoia Analytical

680 Chesapeake Drive
404 N. Wiget Lane
819 Striker Avenue, Suite B
1455 McDowell Blvd. North, Ste. D

Redwood City, CA 94063
Walnut Creek, CA 94598
Sacramento, CA 95834
Petaluma, CA 94954

(650) 364-9600
(925) 988-9600
(916) 921-9600
(707) 792-1865

FAX (650) 364-9233
FAX (925) 988-9673
FAX (916) 921-0100
FAX (707) 792-0342

Blaine Tech Services 1680 Rogers Avenue San Jose, CA 95112	Client Proj. ID: Chevron 9-3864/981223-G3 Sample Descript: TB Matrix: LIQUID Analysis Method: 8015Mod/8020 Lab Number: 9812G94-06	Sampled: 12/23/98 Received: 12/28/98 Analyzed: 01/06/99 Reported: 01/11/99
--	---	---

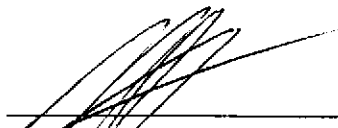
QC Batch Number: GC010699802009A
Instrument ID: HP9

Total Purgeable Hydrocarbons (TPPH) with BTEX and MTBE

Analyte	Detection Limit ug/L	Sample Results ug/L
TPPH as Gas	50	N.D.
Methyl t-Butyl Ether	2.5	2.9
Benzene	0.50	N.D.
Toluene	0.50	N.D.
Ethyl Benzene	0.50	N.D.
Xylenes (Total)	0.50	N.D.
Chromatogram Pattern:		
Surrogates	Control Limits %	% Recovery
Trifluorotoluene	70 130	99

Analytes reported as N.D. were not present above the stated limit of detection.

SEQUOIA ANALYTICAL - ELAP #1271



Mike Gregory
Project Manager





Sequoia
Analytical

680 Chesapeake Drive
404 N. Wiget Lane
819 Striker Avenue, Suite 8
1455 McDowell Blvd. North, Ste. D

Redwood City, CA 94063
Walnut Creek, CA 94598
Sacramento, CA 95834
Petaluma, CA 94954

(650) 364-9600
(925) 988-9600
(916) 921-9600
(707) 792-1865

FAX (650) 364-9233
FAX (925) 988-9673
FAX (916) 921-0100
FAX (707) 792-0342

Blaine Tech Services
1680 Rogers Avenue
San Jose, CA 95112
Attention: Christine Lillie

Client Proj. ID: Chevron 9-3864/981223-G3

Received: 12/28/98

Lab Proj. ID: 9812G94

Reported: 01/11/99

LABORATORY NARRATIVE

In order to properly interpret this report, it must be reproduced in its entirety. This report contains a total of 10 pages including the laboratory narrative, sample results, quality control, and related documents as required (cover page, COC, raw data, etc.).

TPH-GAS/BTEX:

Sample 9812G94-01 was diluted 20-fold.
Sample 9812G94-04 was diluted 100-fold.

MTBE NOTE:

Sample 9812G94-06 was analyzed for MTBE 1/6/99 on HP9 and had a confirmation analysis 1/7/99 on HP5.

SEQUOIA ANALYTICAL

Mike Gregory
Project Manager





Sequoia Analytical

680 Chesapeake Drive
404 N. Wiget Lane
819 Striker Avenue, Suite 8
1455 McDowell Blvd. North, Ste. D

Redwood City, CA 94063
Walnut Creek, CA 94598
Sacramento, CA 95834
Petaluma, CA 94954

(650) 364-9600
(925) 988-9600
(916) 921-9600
(707) 792-1865

FAX (650) 364-9233
FAX (925) 988-9673
FAX (916) 921-0100
FAX (707) 792-0342

Blaine Tech Services, Inc.
1680 Rogers Ave.
San Jose, CA 95112
Attention: Christine Lillie

Client Project ID: Chevron 9-3864/ 981223-G3
Matrix: Liquid

Work Order #: 9812G94 -01

Reported: Jan 12, 1999

QUALITY CONTROL DATA REPORT

Analyte:	Benzene	Toluene	Ethyl Benzene	Xylenes	BTEX as TPH
QC Batch#:	GC010799802009A	GC010799802009A	GC010799802009A	GC010799802009A	GC010799802009A
Analy. Method:	EPA 8020	EPA 8020	EPA 8020	EPA 8020	EPA 8015M
Prep. Method:	EPA 5030	EPA 5030	EPA 5030	EPA 5030	EPA 5030

Analyst:	C. Westwater	C. Westwater	C. Westwater	C. Westwater	C. Westwater
MS/MSD #:	8122388	8122388	8122388	8122388	8122388
Sample Conc.:	N.D.	N.D.	N.D.	N.D.	N.D.
Prepared Date:	1/7/99	1/7/99	1/7/99	1/7/99	1/7/99
Analyzed Date:	1/7/99	1/7/99	1/7/99	1/7/99	1/7/99
Instrument I.D.#:	HP9	HP9	HP9	HP9	HP9
Conc. Spiked:	20 µg/L	20 µg/L	20 µg/L	60 µg/L	330 µg/L
Result:	19	20	20	62	320
MS % Recovery:	95	100	100	103	97
Dup. Result:	20	21	21	62	330
MSD % Recov.:	100	105	105	103	100
RPD:	5.1	4.9	4.9	0.0	3.1
RPD Limit:	0-20	0-20	0-20	0-20	0-50

LCS #:	LCS010799	LCS010799	LCS010799	LCS010799	LCS010799
Prepared Date:	1/7/99	1/7/99	1/7/99	1/7/99	1/7/99
Analyzed Date:	1/7/99	1/7/99	1/7/99	1/7/99	1/7/99
Instrument I.D.#:	HP9	HP9	HP9	HP9	HP9
Conc. Spiked:	20 µg/L	20 µg/L	20 µg/L	60 µg/L	330 µg/L
LCS Result:	18	19	20	61	290
LCS % Recov.:	90	95	100	102	88

MS/MSD	60-140	60-140	60-140	60-140	
LCS	70-130	70-130	70-130	70-130	50-150
Control Limits					

SEQUOIA ANALYTICAL
Elap #1271

Mike Gregory
Project Manager

Please Note:

The LCS is a control sample of known, interferent-free matrix that is analyzed using the same reagents, preparation, and analytical methods employed for the samples. The matrix spike is an aliquot of sample fortified with known quantities of specific compounds and subjected to the entire analytical procedure. If the recovery of analytes from the matrix spike does not fall within specified control limits due to matrix interference, the LCS recovery is to be used to validate the batch.

** MS = Matrix Spike, MSD = MS Duplicate, RPD = Relative % Difference

9812G94.BLA < 1 >





Sequoia Analytical

680 Chesapeake Drive
404 N. Wiger Lane
819 Striker Avenue, Suite B
1455 McDowell Blvd. North, Ste. D

Redwood City, CA 94063
Walnut Creek, CA 94598
Sacramento, CA 95834
Petaluma, CA 94954

(650) 364-9600
(925) 988-9600
(916) 921-9600
(707) 792-1865

FAX (650) 364-9233
FAX (925) 988-9673
FAX (916) 921-0100
FAX (707) 792-0342

Blaine Tech Services, Inc.
1680 Rogers Ave.
San Jose, CA 95112
Attention: Christine Lillie

Client Project ID: Chevron 9-3864/ 981223-G3
Matrix: Liquid

Work Order #: 9812G94-02-06

Reported: Jan 12, 1999

QUALITY CONTROL DATA REPORT

Analyte:	Benzene	Toluene	Ethyl Benzene	Xylenes	BTEX as TPH
QC Batch#:	GC010699802009A	GC010699802009A	GC010699802009A	GC010699802009A	GC010699802009A
Analy. Method:	EPA 8020	EPA 8020	EPA 8020	EPA 8020	EPA 8015M
Prep. Method:	EPA 5030	EPA 5030	EPA 5030	EPA 5030	EPA 5030

Analyst:	C. Westwater	C. Westwater	C. Westwater	C. Westwater	C. Westwater
MS/MSD #:	8122258	8122258	8122258	8122258	8122258
Sample Conc.:	N.D.	N.D.	N.D.	N.D.	N.D.
Prepared Date:	1/6/99	1/6/99	1/6/99	1/6/99	1/6/99
Analyzed Date:	1/6/99	1/6/99	1/6/99	1/6/99	1/6/99
Instrument I.D.#:	HP9	HP9	HP9	HP9	HP9
Conc. Spiked:	20 µg/L	20 µg/L	20 µg/L	60 µg/L	330 µg/L
Result:	20	21	21	65	310
MS % Recovery:	100	105	105	108	94
Dup. Result:	20	21	22	66	310
MSD % Recov.:	100	105	110	110	94
RPD:	0.0	0.0	4.7	1.5	0.0
RPD Limit:	0-20	0-20	0-20	0-20	0-50

LCS #:	LCS010699	LCS010699	LCS010699	LCS010699	LCS010699
Prepared Date:	1/6/99	1/6/99	1/6/99	1/6/99	1/6/99
Analyzed Date:	1/6/99	1/6/99	1/6/99	1/6/99	1/6/99
Instrument I.D.#:	HP9	HP9	HP9	HP9	HP9
Conc. Spiked:	20 µg/L	20 µg/L	20 µg/L	60 µg/L	330 µg/L
LCS Result:	20	21	22	68	320
LCS % Recov.:	100	105	110	113	97

MS/MSD	60-140	60-140	60-140	60-140	
LCS	70-130	70-130	70-130	70-130	50-150
Control Limits					

SEQUOIA ANALYTICAL
Elap #1271

Mike Gregory
Project Manager

Please Note:

The LCS is a control sample of known, interferent-free matrix that is analyzed using the same reagents, preparation, and analytical methods employed for the samples. The matrix spike is an aliquot of sample fortified with known quantities of specific compounds and subjected to the entire analytical procedure. If the recovery of analytes from the matrix spike does not fall within specified control limits due to matrix interference, the LCS recovery is to be used to validate the batch.

** MS=Matrix Spike, MSD=MS Duplicate, RPD=Relative % Difference

9812G94.BLA <2>



Field Data Sheets

CHEVRON WELL MONITORING DATA SHEET

Project #: 981223-61	Station #: 9-3864
Sampler: MG	Date: 12/23/98
Well I.D.: C-3	Well Diameter: <u>2</u> 3 4 6 8
Total Well Depth: 29.10	Depth to Water: 12.79
Depth to Free Product:	Thickness of Free Product (feet):
Referenced to: <u>PVC</u> Grade	D.O. Meter (if req'd): YSI HACH

Well Diameter	Multiplier	Well Diameter	Multiplier
2"	0.16	5"	1.02
3"	0.37	6"	1.47
4"	0.65	Other	radius ² * 0.163

Purge Method: <input type="checkbox"/> Bailer <input checked="" type="checkbox"/> Disposable Bailer <input type="checkbox"/> Middleburg <input type="checkbox"/> Electric Submersible <input type="checkbox"/> Extraction Pump Other: _____	Sampling Method: <input type="checkbox"/> Bailer <input checked="" type="checkbox"/> Disposable Bailer <input type="checkbox"/> Extraction Port Other: _____
--	---

2.6	x	3	=	7.8	Gals.
1 Case Volume (Gals.)		Specified Volumes		Calculated Volume	

Time	Temp (°F)	pH	Cond.	Gals. Removed	Observations
1356	64.9	6.7	691	2.75	
1401	65.2	6.5	680	5.5	
1406	65.0	6.5	670	8.0	

Did well dewater? Yes <input type="checkbox"/> <u>No</u>	Gallons actually evacuated: 8.0	
Sampling Time: 1411	Sampling Date: 12/23/98	
Sample I.D.: C-3	Laboratory: <u>Sequoia</u> CORE N. Creek Assoc. Labs	
Analyzed for: <u>TPH-G</u> BTEX MTBE TPH-D Other:		
Duplicate I.D.: Analyzed for: TPH-G BTEX MTBE TPH-D Other:		
D.O. (if req'd):	Pre-purge: mg/L	Post-purge: mg/L
O.R.P. (if req'd):	Pre-purge: mV	Post-purge: mV

CHEVRON WELL MONITORING DATA SHEET

Project #: <u>981223-63</u>	Station #: <u>9-3864</u>
Sampler: <u>M6</u>	Date: <u>12/23/98</u>
Well I.D.: <u>MW-1</u>	Well Diameter: <u>2</u> 3 4 6 8 _____
Total Well Depth: <u>23.50</u>	Depth to Water: <u>11.99</u>
Depth to Free Product:	Thickness of Free Product (feet):
Referenced to: <u>PVC</u> Grade	D.O. Meter (if req'd): YSI HACH

Well Diameter	Multiplier	Well Diameter	Multiplier
2"	0.16	5"	1.02
3"	0.37	6"	1.47
4"	0.65	Other	radius ² * 0.163

Purge Method: Bailer Sampling Method: Bailer
 Disposable Bailer Disposable Bailer
 Middleburg Extraction Port
 Electric Submersible Other: _____
 Extraction Pump

<u>1.8</u>	x	<u>3</u>	=	<u>5.4</u>	Gals.
1 Case Volume (Gals.)		Specified Volumes		Calculated Volume	

Time	Temp (°F)	pH	Cond.	Gals. Removed	Observations
<u>1235</u>	<u>63.9</u>	<u>6.5</u>	<u>420</u>	<u>2.0</u>	
<u>1239</u>	<u>64.5</u>	<u>6.4</u>	<u>410</u>	<u>4.0</u>	
<u>1243</u>	<u>64.2</u>	<u>6.4</u>	<u>410</u>	<u>6.0</u>	

Did well dewater? Yes No Gallons actually evacuated: 6.0

Sampling Time: 1248 Sampling Date: 12/23/98

Sample I.D.: MW-1 Laboratory: Sequoia CORE N. Creek Assoc. Labs

Analyzed for: TPH-G BTEX MTBE TPH-D Other: _____

Duplicate I.D.: _____ Analyzed for: TPH-G BTEX MTBE TPH-D Other: _____

D.O. (if req'd):	Pre-purge:	mg/L	Post-purge:	mg/L
O.R.P. (if req'd):	Pre-purge:	mV	Post-purge:	mV

CHEVRON WELL MONITORING DATA SHEET

Project #: <u>981223-63</u>	Station #: <u>9-3864</u>
Sampler: <u>MG</u>	Date: <u>12/23/98</u>
Well I.D.: <u>MW-3</u>	Well Diameter: <u>2</u> 3 4 6 8 _____
Total Well Depth: <u>26.69</u>	Depth to Water: <u>13.60</u>
Depth to Free Product:	Thickness of Free Product (feet):
Referenced to: <u>PVC</u> Grade	D.O. Meter (if req'd): YSI HACH

Well Diameter	Multiplier	Well Diameter	Multiplier
2"	0.16	5"	1.02
3"	0.37	6"	1.47
4"	0.65	Other	radius ² * 0.163

Purge Method: <input type="checkbox"/> Bailer <input checked="" type="checkbox"/> Disposable Bailer Middleburg <input type="checkbox"/> Electric Submersible Extraction Pump Other: _____	Sampling Method: <input type="checkbox"/> Bailer <input checked="" type="checkbox"/> Disposable Bailer Extraction Port Other: _____
--	--

<u>2.1</u>	\times	<u>3</u>	$=$	<u>6.3</u>	Gals.
1 Case Volume (Gals.)		Specified Volumes		Calculated Volume	

Time	Temp (°F)	pH	Cond.	Gals. Removed	Observations
<u>1423</u>	<u>64.7</u>	<u>6.5</u>	<u>580</u>	<u>2.25</u>	<u>Odor</u>
<u>1427</u>	<u>65.1</u>	<u>6.3</u>	<u>620</u>	<u>4.9</u>	<u>↓</u>
<u>1431</u>	<u>64.5</u>	<u>6.3</u>	<u>650</u>	<u>6.5</u>	<u>↓</u>

Did well dewater? Yes <input type="checkbox"/> <u>No</u>	Gallons actually evacuated: <u>6.5</u>			
Sampling Time: <u>1436</u>	Sampling Date: <u>12/23/98</u>			
Sample I.D.: <u>MW-3</u>	Laboratory: <u>Sequoia</u> CORE N. Creek Assoc. Labs			
Analyzed for: <u>TPH-G BTEX MTBE</u> TPH-D Other:				
Duplicate I.D.: Analyzed for: TPH-G BTEX MTBE TPH-D Other:				
D.O. (if req'd):	Pre-purge:	mg/L	Post-purge:	mg/L
O.R.P. (if req'd):	Pre-purge:	mV	Post-purge:	mV

CHEVRON WELL MONITORING DATA SHEET

Project #: <u>98/223-63</u>	Station #: <u>9-3864</u>
Sampler: <u>MB</u>	Date: <u>12/23/98</u>
Well I.D.: <u>MW-5</u>	Well Diameter: <input checked="" type="radio"/> 2 3 4 6 8 <u> </u>
Total Well Depth: <u>21.62</u>	Depth to Water: <u>14.55</u>
Depth to Free Product:	Thickness of Free Product (feet):
Referenced to: <input checked="" type="radio"/> PVC Grade	D.O. Meter (if req'd): YSI HACH

Well Diameter	Multiplier	Well Diameter	Multiplier
2"	0.16	5"	1.02
3"	0.37	6"	1.47
4"	0.65	Other	radius ² * 0.163

Purge Method: Bailer Sampling Method: Bailer

Disposable Bailer Disposable Bailer

 Middleburg Extraction Port

 Electric Submersible Other: _____

 Extraction Pump

Other: _____

<u>1.1</u>	x	<u>3</u>	=	<u>3.3</u>	Gals.
1 Case Volume (Gals.)		Specified Volumes		Calculated Volume	

Time	Temp (°F)	pH	Cond.	Gals. Removed	Observations
<u>1338</u>	<u>67.0</u>	<u>6.5</u>	<u>370</u>	<u>1.25</u>	
<u>1340</u>	<u>67.4</u>	<u>6.4</u>	<u>360</u>	<u>2.5</u>	
<u>1342</u>	<u>67.8</u>	<u>6.5</u>	<u>360</u>	<u>3.5</u>	

Did well dewater? Yes No Gallons actually evacuated: 3.5

Sampling Time: 1347 Sampling Date: 12/23/98

Sample I.D.: MW-5 Laboratory: Sequoia CORE N. Creek Assoc. Labs

Analyzed for: TPH-G BTEX MTBE TPH-D Other:

Duplicate I.D.: Analyzed for: TPH-G BTEX MTBE TPH-D Other:

D.O. (if req'd):	Pre-purge:	mg/L	Post-purge:	mg/L
O.R.P. (if req'd):	Pre-purge:	mV	Post-purge:	mV