



Chevron

ENVIRONMENTAL
PROTECTION

00 JAN 14 PM 3:54

Chevron U.S.A. Products Company
6001 Bollinger Canyon Rd. Bldg. L
P. O. Box 6004
San Ramon, CA 94583-0804

Site Assessment and
Remediation Group
Phone (510) 842-9500
Fax (510) 842-8370

Date: January 5, 2000
To: Distribution
Re: Groundwater Monitoring Report , 9-5607

The enclosed groundwater monitoring report has been properly reviewed by a Chevron authorized representative. Agency guidelines have been followed. Blaine Tech Services is authorized to distribute the report directly to interested parties.

If you have any questions, please call me at (510) 842-8695.

Sincerely,

Brett Hunter
Site Assessment and Remediation
Project Manager

BLAINE
TECH SERVICES INC.



1680 ROGERS AVENUE
SAN JOSE, CALIFORNIA 95112-1105
(408) 573-7771 FAX
(408) 573-0555 PHONE

January 5, 2000

Brett Hunter
Chevron U.S.A. Products Company
P.O. Box 6004
San Ramon, CA 94583-0904

4th Quarter 1999 Monitoring at 9-5607

Fourth Quarter 1999 Groundwater Monitoring at
Chevron Service Station Number 9-5607
5269 Crow Canyon Road
Castro Valley, CA

Monitoring Performed on **November 1, 1999**

Groundwater Sampling Report 991101-F-1

This report covers the routine monitoring of groundwater wells at this Chevron facility. Blaine Tech Services, Inc.'s work at the site includes inspection, gauging, evacuation, purgewater containment, sample collection and sample handling in accordance with standard procedures that conform to Regional Water Quality Control Board requirements.

Routine field data collection includes depth to water, total well depth, thickness of any separate immiscible layer, water column volume, calculated volume of a three-case volume purge, elapsed evacuation time, total volume of water removed, and standard water parameter instrument readings. Sample material is collected, contained, stored, and transported to the laboratory in conformance with EPA standards. Purgewater is, likewise, collected and transported to McKittrick Waste Treatment Site for disposal.

Basic field information is presented alongside analytical values excerpted from the laboratory report in the cumulative table of **WELL DATA AND ANALYTICAL RESULTS**. The full analytical report for the most recent samples is located in the **Analytical Appendix**. The table also contains new groundwater elevation calculations taken from the computer plotted gradient map which is located in the **Professional Engineering Appendix**.

At a minimum, Blaine Tech Services, Inc. field personnel are certified upon completion of a forty-hour Hazardous Materials and Emergency Response training course per 29 CFR 1910.120. Field personnel are also enrolled in annual eight hour refresher courses.

Blaine Tech Services, Inc. conducts sampling and documentation assignments of this type as an independent third party. In order to avoid compromising the objectivity necessary for the proper and disinterested performance of this work, Blaine Tech Services, Inc. concentrates on objective data collection and does not participate in the interpretation of analytical results, the definition of geological or hydrological conditions, the formulation of recommendations, or the marketing of remedial systems.

Please call if you have any questions.

Yours truly,



Scott Boor
Project Coordinator

SDB/jbt

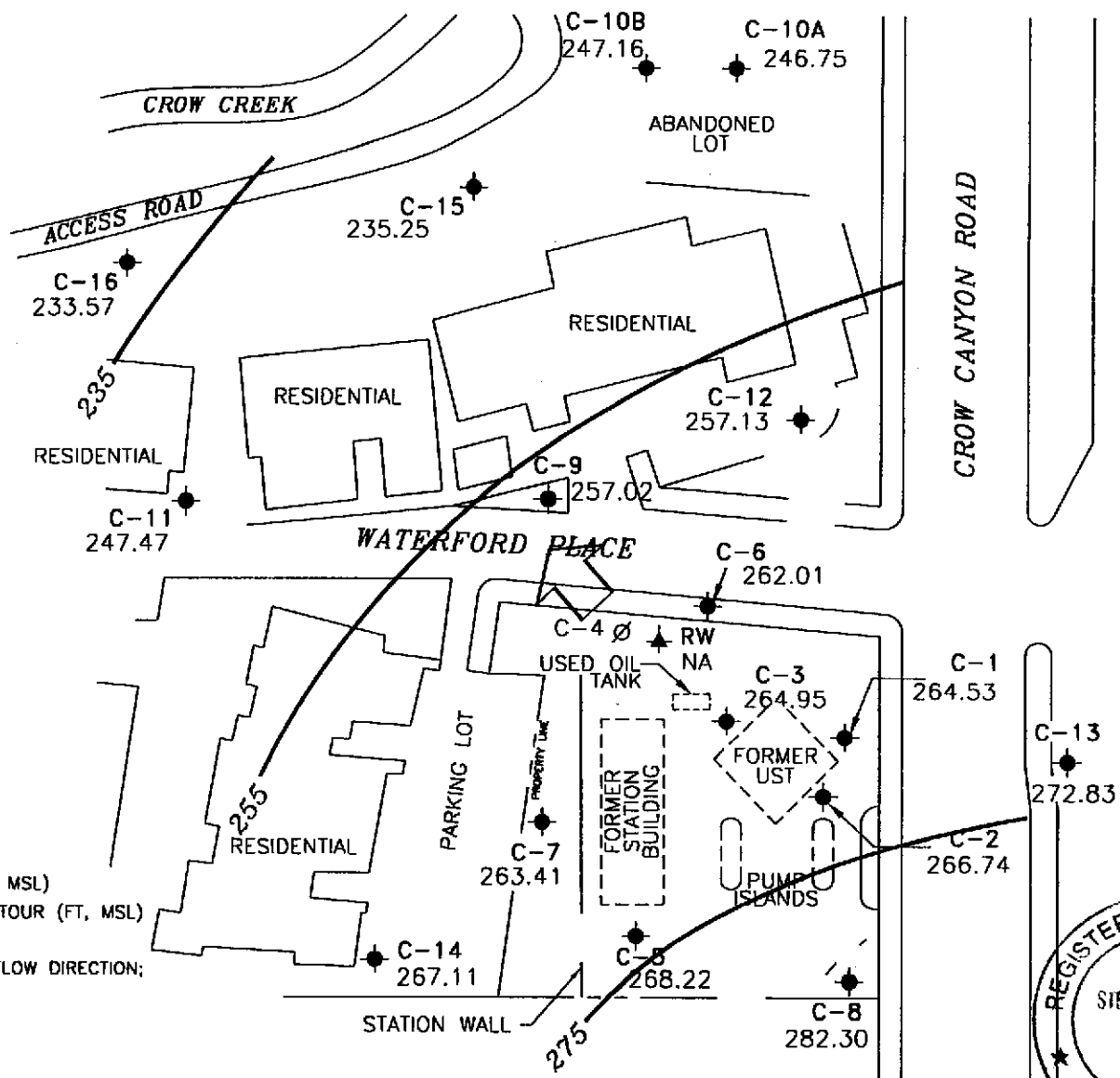
attachments: Professional Engineering Appendix
Cumulative Table of Well Data and Analytical Results
Analytical Appendix
Field Data Sheets

cc: Scott Seery, Alameda County Environmental Health
Kevin Hinckley
Diane Riggs, Forest Creek Townhomes Assoc.
Tim Utterback, Weiss Associates
Bette Owen, Chevron (w/o enclosure)

Professional Engineering Appendix



SCALE (ft)



EXPLANATION

- MONITORING WELL
- ABANDONED MONITORING WELL
- RECOVERY WELL
- 233.57 GROUNDWATER ELEVATION (FT, MSL)
- 255 GROUNDWATER ELEVATION CONTOUR (FT, MSL)
- NA DATA NOT AVAILABLE
- APPROXIMATE GROUNDWATER FLOW DIRECTION;
APPROXIMATE GRADIENT = 0.1



Basemap from Cambria Environmental Technology, Inc.

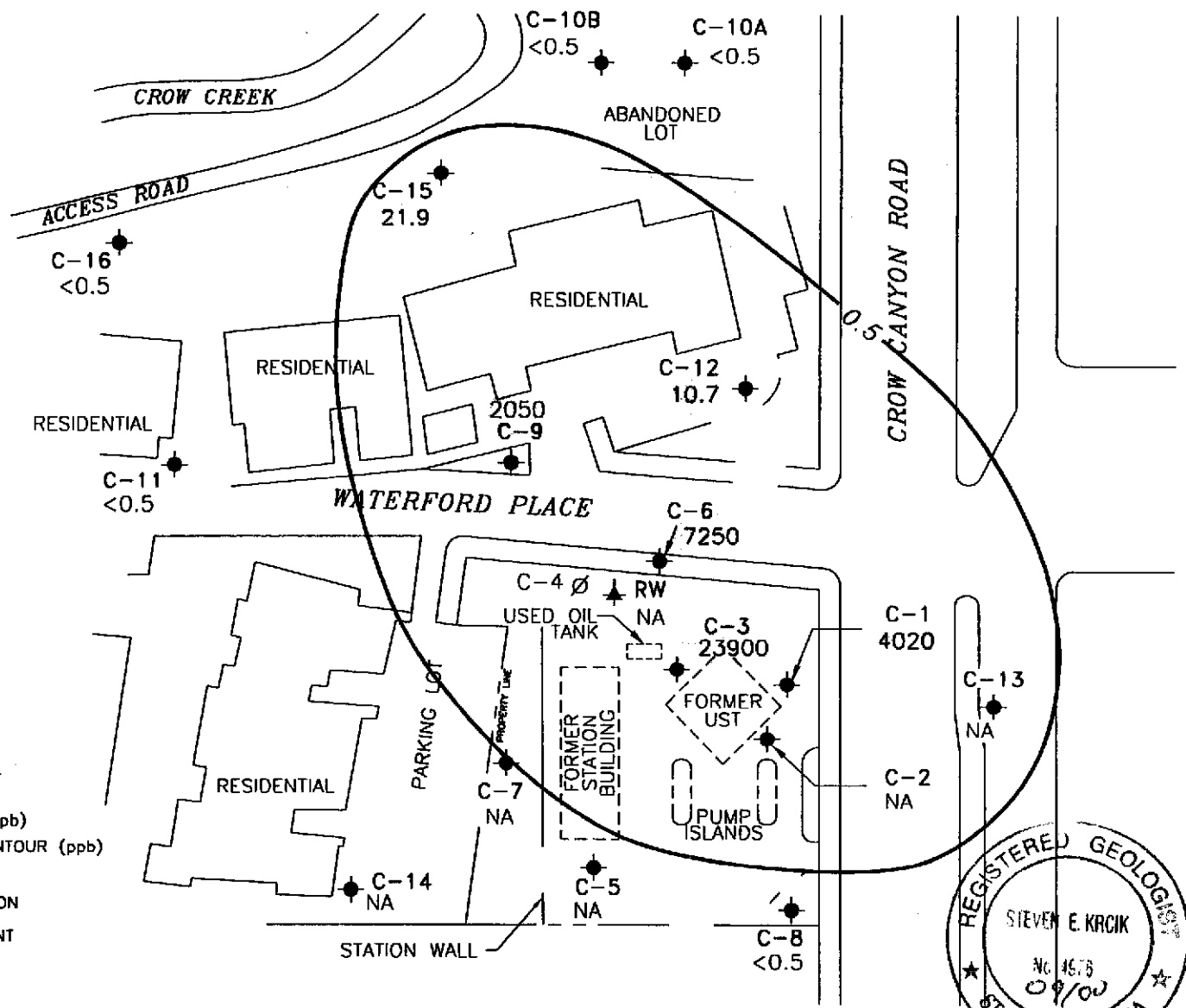
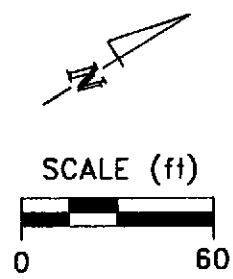
PREPARED BY

RRM
engineering contracting firm

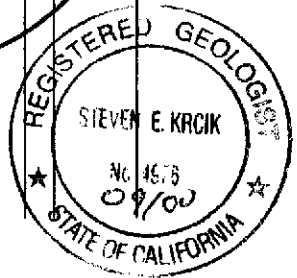
Chevron Station 9-5607
5269 Crow Canyon Road
Castro Valley, California

GROUNDWATER ELEVATION CONTOUR MAP,
NOVEMBER 1, 1999

FIGURE:
1
PROJECT:
DAC04



- EXPLANATION**
- MONITORING WELL
 - ∅ ABANDONED MONITORING WELL
 - ▲ RECOVERY WELL
 - <0.5 BENZENE CONCENTRATIONS (ppb)
 - 0.5 BENZENE CONCENTRATION CONTOUR (ppb)
 - NA DATA NOT AVAILABLE
 - SPH SEPARATE PHASE HYDROCARBON
- NOTE: CONTOURS BASED ON CURRENT AND HISTORIC DATA.



Basemap from Cambrio Environmental Technology, Inc.

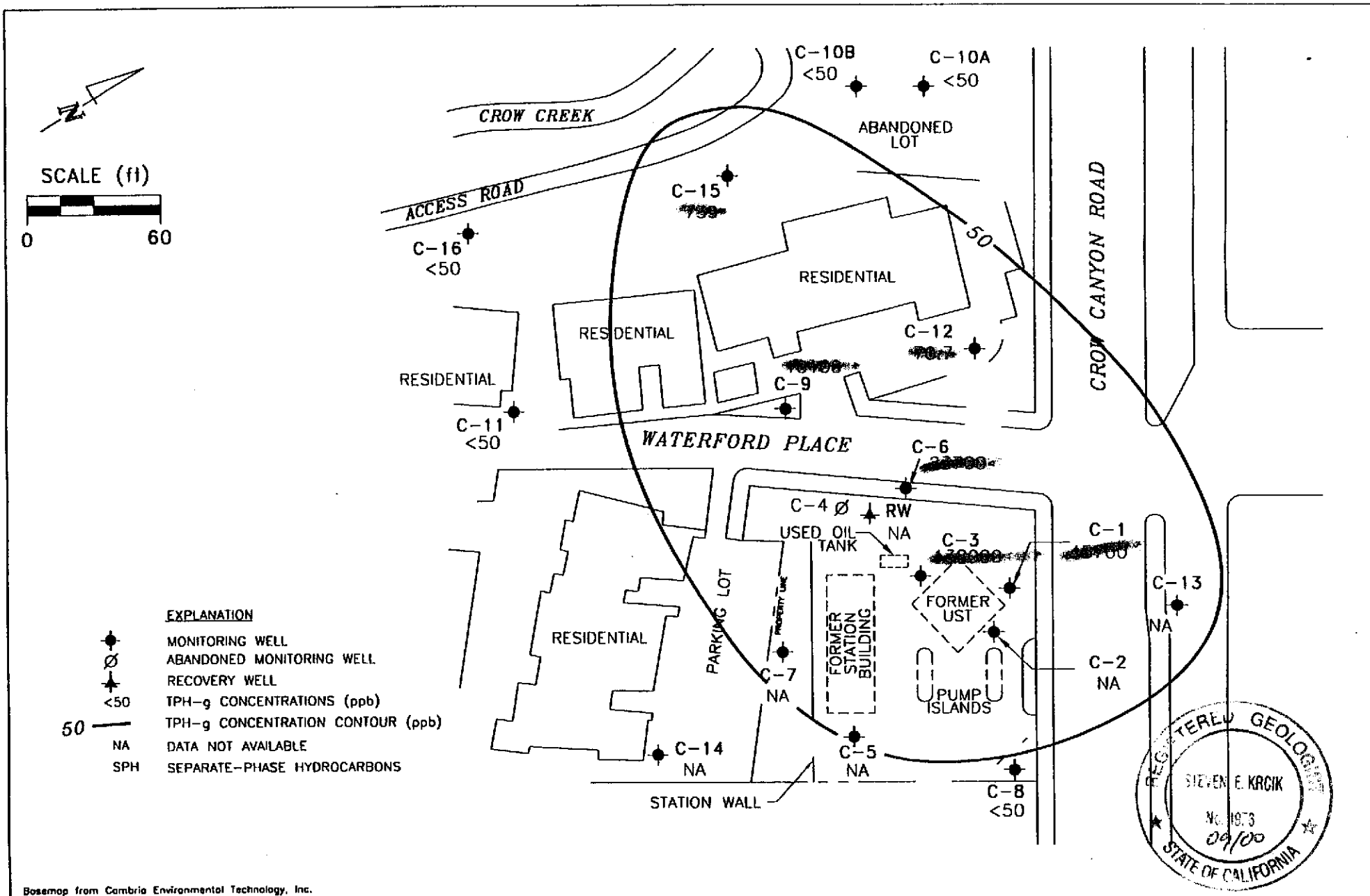
PREPARED BY

RRM
engineering contracting firm

Chevron Station 9-5607
5269 Crow Canyon Road
Castro Valley, California

BENZENE CONCENTRATION IN GROUNDWATER, NOVEMBER 1, 1999

FIGURE: **2**
PROJECT: DAC04



Basemap from Cambria Environmental Technology, Inc.

PREPARED BY

RRM
 engineering contracting firm

Chevron Station 9-5607
 5269 Crow Canyon Road
 Castro Valley, California

**TPH-GASOLINE CONCENTRATION IN
 GROUNDWATER, NOVEMBER 1, 1999**

**FIGURE:
 3
 PROJECT:
 DAC04**

Table of Well Data and Analytical Results

Cumulative Table of Well Data and Analytical Results

Vertical Measurements are in feet.			Volumetric Measurements are in gallons.				Analytical results are in parts per billion (ppb)							
DATE	Well Head Elev.	Ground Water Elev.	Depth To Water	SPH Thickness	SPH Remove	Total SPH Removed	Notes	TPH-Gasoline	Benzene	Toluene	Ethyl-Benzene	Xylene	MTBE	Organic Lead
C-1														
03/26/85	283.46	260.63	22.83	--	--	--	--	--	--	--	--	--	--	--
07/03/86	283.46	259.88	23.58	--	--	--	--	--	--	--	--	--	--	--
03/26/87	283.46	262.96	20.50	--	--	--	--	--	--	--	--	--	--	--
03/28/88	283.46	257.46	26.00	--	--	--	--	--	--	--	--	--	--	--
03/10/89	283.46	267.60	15.86	--	--	--	--	--	--	--	--	--	--	--
04/03/89	283.46	266.61	16.85	--	--	--	--	--	--	--	--	--	--	--
05/08/89	283.46	260.78	22.68	--	--	--	--	--	--	--	--	--	--	--
06/05/89	283.46	258.80	24.66	--	--	--	--	--	--	--	--	--	--	--
07/12/90	283.46	257.90	25.56	--	--	--	--	--	--	--	--	--	--	--
08/10/90	283.46	257.57	25.89	--	--	--	--	--	--	--	--	--	--	--
09/13/89	283.46	256.91	26.55	--	--	--	--	22,000	3600	1100	1000	3500	--	--
10/04/89	283.46	258.22	25.24	--	--	--	--	--	--	--	--	--	--	--
11/03/89	283.46	258.43	25.03	--	--	--	--	--	--	--	--	--	--	--
12/04/89	283.46	257.09	26.37	--	--	--	--	13,000	2000	550	610	1600	--	--
03/07/90	283.46	260.98	22.48	--	--	--	--	--	--	--	--	--	--	--
03/09/90	283.46	--	--	--	--	--	--	--	--	--	--	--	--	--
06/12/90	283.46	259.11	24.35	--	--	--	--	21,000	3500	1400	840	4000	--	--
09/20/90	283.46	257.19	26.27	--	--	--	--	23,000	2100	1200	860	5000	--	--
12/20/90	283.46	260.87	22.59	--	--	--	--	8200	760	410	260	1100	--	--
03/27/91	283.46	264.38	19.08	--	--	--	--	--	--	--	--	--	--	--
06/18/91	283.46	256.35	27.11	--	--	--	--	--	--	--	--	--	--	--
09/12/91	283.46	255.24	28.22	--	--	--	--	--	--	--	--	--	--	--
01/23/92	283.46	256.81	26.65	--	--	--	--	--	--	--	--	--	--	--
04/13/92	283.46	261.30	22.16	--	--	--	--	38,000	3100	1300	850	3100	--	--
08/03/92	283.46	257.31	26.15	--	--	--	--	13,000	1300	470	550	1600	--	ND
10/22/92	283.46	256.67	26.79	--	--	--	--	24,000	3500	1400	1500	4300	--	--
01/18/93	283.46	264.86	18.60	--	--	--	--	370,000	6900	8900	3100	23,000	--	--
04/19/93	283.46	262.34	21.12	--	--	--	--	51,000	8000	7000	1400	10,000	--	--
07/21-22/93	283.46	260.18	23.28	--	--	--	--	22,000	3400	1000	990	3100	--	--
10/25/93	283.46	258.80	24.66	--	--	--	--	14,000	2000	550	790	2300	--	--
01/21/94	283.46	262.99	20.47	--	--	--	--	1100	350	6.0	3.0	15	--	--
04/18/94	283.46	260.36	23.10	--	--	--	--	24,000	3200	1000	1000	3100	--	--
07/06-07/94	283.46	260.56	22.90	--	--	--	--	65,000	6500	4200	1600	9300	--	--
10/07/94	283.46	258.75	24.71	--	--	--	--	27,000	5100	1200	1400	4300	--	--

CONTINUED ON NEXT PAGE

Cumulative Table of Well Data and Analytical Results

Vertical Measurements are in feet.

Volumetric Measurements are in gallons.

Analytical results are in parts per billion (ppb)

DATE	Vertical Measurements are in feet.			Volumetric Measurements are in gallons.				Analytical results are in parts per billion (ppb)						
	Well Head Elev.	Ground Water Elev.	Depth To Water	SPH Thickness	SPH Removed	Total SPH Removed	Notes	TPH-Gasoline	Benzene	Toluene	Ethyl-Benzene	Xylene	MTBE	Organic Lead
C-1 (CONT'D)														
01/11/95	283.46	265.16	18.30	--	--	--	--	29,000	1300	1200	930	4000	--	--
04/24/95	283.46	266.52	16.94	--	--	--	--	75,000	8900	5000	1700	8400	--	--
07/31/95	283.46	262.90	20.56	--	--	--	--	56,000	11,000	2600	2500	11,000	--	--
10/02/95	283.46	272.88	10.58	--	--	--	--	44,000	7900	1100	2100	6500	--	--
01/16/96	283.46	261.71	21.75	--	--	--	--	29,000	5300	460	1000	2800	<500	--
04/18/96	283.46	264.51	18.95	--	--	--	--	59,000	7100	3000	2000	7600	<250	--
07/22/96	283.46	262.46	21.00	--	--	--	--	26,000	6100	610	1800	4700	<250	--
10/10/96	283.46	261.46	22.00	--	--	--	--	24,000	7100	600	1700	3200	<250	--
01/09/97	283.46	268.05	15.41	--	--	--	--	32,000	4600	820	1500	4000	670	--
04/15/97	283.46	264.12	19.34	--	--	--	--	100,000	11,000	4500	3200	13,000	1700	--
04/15/97	283.46	264.12	19.34	--	--	--	Confirmation run	--	--	--	--	--	<200	--
07/08/97	283.46	263.68	19.78	--	--	--	--	42,000	5500	880	2000	4800	920	--
10/22/97	283.46	265.13	18.33	--	--	--	--	29,000	5200	970	1800	4200	740	--
01/12/98	283.46	271.81	11.65	--	--	--	--	31,000	2700	960	2100	5700	<1000	--
04/21/98	283.46	271.17	12.29	--	--	--	--	60,000	3300	2100	3100	10,000	1400	--
07/08/98	283.46	264.89	18.57	--	--	--	--	33,000	4400	1500	2800	8200	<250	--
10/13/98	283.46	262.11	21.35	--	--	--	*	27,000	3900	580	2000	4200	210	--
01/27/99	283.46	262.91	20.55	--	--	--	--	1220	126	21.9	1.6	163	10.3	--
04/27/99	283.46	265.81	17.65	--	--	--	--	21,300	1720	226	1230	2060	<500	--
07/23/99	283.46	264.00	19.46	--	--	--	--	17,200	1440	257	1070	1960	<500	--
11/01/99	283.46	264.53	18.93	--	--	--	--	45,700	4020	1280	2690	8140	1250	--

* See Table of Additional Analyses.

Cumulative Table of Well Data and Analytical Results

Vertical Measurements are in feet.

Volumetric Measurements are in gallons.

Analytical results are in parts per billion (ppb)

DATE	Well Head Elev.	Ground Water Elev.	Depth To Water	Total			Notes	Analytical results are in parts per billion (ppb)						
				SPH Thickness	SPH Remove	SPH Removed		TPH-Gasoline	Benzene	Toluene	Ethyl-Benzene	Xylene	MTBE	Organic Lead
C-2														
03/26/85	284.37	--	--	--	--	--	--	--	--	--	--	--	--	--
07/03/86	284.37	264.68	19.69	--	--	--	--	--	--	--	--	--	--	--
03/26/87	284.37	268.92	15.45	--	--	--	--	--	--	--	--	--	--	--
03/28/88	284.37	263.45	20.92	--	--	--	--	--	--	--	--	--	--	--
03/10/89	284.37	271.57	12.80	--	--	--	--	--	--	--	--	--	--	--
04/03/89	284.37	270.11	14.26	--	--	--	--	--	--	--	--	--	--	--
05/08/89	284.37	265.95	18.42	--	--	--	--	--	--	--	--	--	--	--
06/05/89	284.37	264.28	20.09	--	--	--	--	--	--	--	--	--	--	--
07/12/90	284.37	263.58	20.79	--	--	--	--	--	--	--	--	--	--	--
08/10/90	284.37	262.97	21.40	--	--	--	--	--	--	--	--	--	--	--
09/13/89	284.37	262.51	21.86	--	--	--	--	320	62	4.0	10	14	--	--
10/04/89	284.37	264.48	19.89	--	--	--	--	--	--	--	--	--	--	--
11/03/89	284.37	263.61	20.76	--	--	--	--	--	--	--	--	--	--	--
12/04/89	284.37	263.55	20.82	--	--	--	--	1000	240	37	66	130	--	--
03/07/90	284.37	266.54	17.83	--	--	--	--	--	--	--	--	--	--	--
03/09/90	284.37	266.54	17.83	--	--	--	--	390	280	35	27	50	--	--
06/12/90	284.37	264.48	19.89	--	--	--	--	700	260	34	28	55	--	--
09/20/90	284.37	262.40	21.97	--	--	--	--	--	--	--	--	--	--	--
12/20/90	284.37	266.64	17.73	--	--	--	--	--	--	--	--	--	--	--
03/27/91	284.37	269.27	15.10	--	--	--	--	--	--	--	--	--	--	--
06/18/91	284.37	261.69	22.68	--	--	--	--	--	--	--	--	--	--	--
09/12/91	284.37	260.45	23.92	--	--	--	--	--	--	--	--	--	--	--
01/23/92	284.37	263.13	21.24	--	--	--	--	--	--	--	--	--	--	--
04/13/92	284.37	266.83	17.54	--	--	--	--	1100	120	76	17	72	--	--
08/03/92	284.37	262.32	22.05	--	--	--	--	--	--	--	--	--	--	--
10/22/92	284.37	261.34	23.03	--	--	--	--	--	--	--	--	--	--	--
01/18/93	284.37	269.51	14.86	--	--	--	--	70	6.4	ND	ND	ND	--	--
04/19/93	284.37	267.57	16.80	--	--	--	--	--	--	--	--	--	--	--
07/21-22/93	284.37	265.12	19.25	--	--	--	--	--	--	--	--	--	--	--
10/25/93	284.37	264.72	19.65	--	--	--	--	--	--	--	--	--	--	--
01/21/94	284.37	258.80	25.57	--	--	--	--	43,000	5100	1800	2000	6800	--	--
04/18/94	284.37	274.61	9.76	--	--	--	--	--	--	--	--	--	--	--
07/06-07/94	284.37	265.61	18.76	--	--	--	--	--	--	--	--	--	--	--
10/07/94	284.37	264.20	20.17	--	--	--	--	--	--	--	--	--	--	--

CONTINUED ON NEXT PAGE

Cumulative Table of Well Data and Analytical Results

Vertical Measurements are in feet.

Volumetric Measurements are in gallons.

Analytical results are in parts per billion (ppb)

DATE	Well Head Elev.	Ground Water Elev.	Depth To Water	Total			Notes	Analytical results are in parts per billion (ppb)						
				SPH Thickness	SPH Remove	SPH Removed		TPH-Gasoline	Benzene	Toluene	Ethyl-Benzene	Xylene	MTBE	Organic Lead
C-2 (CONT'D)														
01/11/95	284.37	270.33	14.04	--	--	--	Sampled annually	780	290	9.1	19	58	--	--
04/24/95	284.37	272.03	12.34	--	--	--	--	--	--	--	--	--	--	--
07/31/95	284.37	266.82	17.55	--	--	--	--	--	--	--	--	--	--	--
10/02/95	284.37	265.39	18.98	--	--	--	--	--	--	--	--	--	--	--
01/16/96	284.37	268.37	16.00	--	--	--	--	260	29	2.9	5.7	21	6.1	--
04/18/96	284.37	270.47	13.90	--	--	--	--	--	--	--	--	--	--	--
07/22/96	284.37	266.63	17.74	--	--	--	--	--	--	--	--	--	--	--
10/10/96	284.37	265.46	18.91	--	--	--	--	--	--	--	--	--	--	--
01/09/97	284.37	271.62	12.75	--	--	--	--	460	25	15	72	24	6.3	--
04/15/97	284.37	268.32	16.05	--	--	--	--	--	--	--	--	--	--	--
07/08/97	284.37	267.95	16.42	--	--	--	--	--	--	--	--	--	--	--
10/22/97	284.37	268.95	15.42	--	--	--	--	--	--	--	--	--	--	--
01/12/98	284.37	272.85	11.52	--	--	--	--	280	22	1.4	5.3	1.2	13	--
04/21/98	284.37	274.22	10.15	--	--	--	--	--	--	--	--	--	--	--
07/08/98	284.37	268.29	16.08	--	--	--	--	--	--	--	--	--	--	--
10/13/98	284.37	265.40	18.97	--	--	--	--	--	--	--	--	--	--	--
01/27/99	284.37	268.52	15.85	--	--	--	--	153	4.83	0.628	<0.5	<0.5	4.73	--
04/27/99	284.37	270.11	14.26	--	--	--	--	--	--	--	--	--	--	--
07/23/99	284.37	268.99	15.38	--	--	--	--	--	--	--	--	--	--	--
11/01/99	284.37	266.74	17.63	--	--	--	--	--	--	--	--	--	--	--

Cumulative Table of Well Data and Analytical Results

Vertical Measurements are in feet.

Volumetric Measurements are in gallons.

Analytical results are in parts per billion (ppb)

DATE	Well Head Elev.	Ground Water Elev.	Depth To Water	Total			Notes	Analytical results are in parts per billion (ppb)						
				SPH Thickness	SPH Remove	SPH Removed		TPH- Gasoline	Benzene	Toluene	Ethyl-Benzene	Xylene	MTBE	Organic Lead
C-3														
03/26/85	285.98	--	--	--	--	--	--	--	--	--	--	--	--	--
07/03/86	285.98	259.94	26.04	--	--	--	--	--	--	--	--	--	--	--
03/26/87	285.98	260.34	25.64	--	--	--	--	--	--	--	--	--	--	--
03/28/88	285.98	257.16	28.82	--	--	--	--	--	--	--	--	--	--	--
03/10/89	285.98	263.20	22.78	--	--	--	--	--	--	--	--	--	--	--
04/03/89	285.98	263.27	22.71	--	--	--	--	--	--	--	--	--	--	--
05/08/89	285.98	260.03	25.95	--	--	--	--	--	--	--	--	--	--	--
06/05/89	285.98	258.36	27.62	--	--	--	--	--	--	--	--	--	--	--
07/12/90	285.98	257.69	28.29	--	--	--	--	--	--	--	--	--	--	--
08/10/90	285.98	257.52	28.46	--	--	--	--	--	--	--	--	--	--	--
09/13/89	285.98	256.65	29.33	--	--	--	--	60,000	1400	6800	2300	10,000	--	--
10/04/89	285.98	257.01	28.97	--	--	--	--	--	--	--	--	--	--	--
11/03/89	285.98	257.26	28.72	--	--	--	--	--	--	--	--	--	--	--
12/04/89	285.98	256.97	29.01	--	--	--	--	56,000	1300	3300	1400	2700	--	--
03/07/90	285.98	258.29	27.69	--	--	--	--	--	--	--	--	--	--	--
03/09/90	285.98	258.29	27.69	--	--	--	--	42,000	1100	5700	1600	7900	--	--
06/12/90	285.98	257.89	28.09	--	--	--	--	160,000	1400	7100	3400	16,000	--	--
09/24/90	285.98	256.80	29.18	--	--	--	--	53,000	850	7700	2000	10,000	--	--
12/20/90	285.98	257.71	28.27	--	--	--	--	520	1200	5400	5400	33,000	--	--
03/27/91	285.98	261.18	24.80	--	--	--	--	92,000	1300	3100	1200	11,000	--	--
06/18/91	285.98	255.14	30.84	--	--	--	--	--	--	--	--	--	--	--
09/12/91	285.98	254.34	31.64	0.03	--	--	--	--	--	--	--	--	--	--
01/23/92	285.98	255.46	30.52	--	--	--	Sheen	--	--	--	--	--	--	--
04/13/92	285.98	259.04	26.94	0.01	--	--	--	--	--	--	--	--	--	--
08/03/92	285.98	255.98	30.00	--	--	--	--	220,000	1300	2800	3100	17,000	--	ND
10/22/92	285.98	255.38	30.62	0.03	--	--	--	--	--	--	--	--	--	--
01/18/93	285.98	262.07	23.91	--	--	--	--	1,000,000	2400	5300	10,000	61,000	--	--
04/19/93	285.98	260.98	25.00	--	--	--	--	94,000	33,000	22,000	1600	9200	--	--
07/21-22/93	285.98	259.43	26.55	--	--	--	--	44,000	2600	5500	1300	6900	--	--
10/25/93	285.98	257.26	28.72	--	--	--	--	35,000	3900	2400	1100	6600	--	--
01/21/94	285.98	256.32	29.66	--	--	--	--	120,000	4200	2200	2000	11,000	--	--
04/18/94	285.98	259.24	26.74	--	--	--	--	29,000	1200	310	520	2000	--	--
07/06-07/94	285.98	259.62	26.36	--	--	--	--	84,000	2700	1400	1400	9700	--	--
10/07/94	285.98	257.49	28.49	--	--	--	--	40,000	1600	390	1200	6100	--	--

CONTINUED ON NEXT PAGE

Cumulative Table of Well Data and Analytical Results

Vertical Measurements are in feet.			Volumetric Measurements are in gallons.				Analytical results are in parts per billion (ppb)							
DATE	Well Head Elev.	Ground Water Elev.	Depth To Water	SPH Thickness	SPH Remove	Total SPH Removed	Notes	TPH-Gasoline	Benzene	Toluene	Ethyl-Benzene	Xylene	MTBE	Organic Lead
C-3 (CONT'D)														
01/11/95	285.98	262.84	23.14	--	--	--	--	34,000	4200	910	720	3800	--	--
04/24/95	285.98	266.10	19.88	--	--	--	--	210,000	43,000	28,000	2400	13,000	--	--
07/31/95	285.98	261.30	24.68	--	--	--	--	110,000	33,000	17,000	2300	12,000	--	--
10/02/95	285.98	258.84	27.14	--	--	--	--	69,000	6700	4000	2000	11,000	--	--
01/16/96	285.98	261.60	24.38	--	--	--	--	40,000	2400	440	1200	5500	< 500	--
04/18/96	285.98	265.31	20.67	--	--	--	--	66,000	26,000	17,000	2200	12,000	1250	--
07/22/96	285.98	261.32	24.66	--	--	--	--	69,000	21,000	8800	1800	9900	1000	--
10/10/96	285.98	260.75	25.23	--	--	--	--	53,000	12,000	2600	1900	9300	< 500	--
01/09/97	285.98	267.74	18.24	--	--	--	--	73,000	17,000	6000	1700	7800	1250	--
04/15/97	285.98	263.96	22.02	--	--	--	--	160,000	28,000	17,000	2600	12,000	2500	--
07/08/97	285.98	263.02	22.96	0.03	--	--	--	--	--	--	--	--	--	--
10/22/97	285.98	264.08	21.90	--	--	--	--	59,000	13,000	5200	2100	11,000	1500	--
01/12/98	285.98	277.93	8.05	--	--	--	--	62,000	10,000	4100	1700	8000	1000	--
04/21/98	285.98	270.70	15.28	--	--	--	--	70,000	13,000	5800	1600	7100	1000	--
07/08/98	285.98	264.83	21.15	--	--	--	--	22,000	7300	2100	560	2900	< 25	--
10/13/98	285.98	268.38	17.60	--	--	--	--	390	32	4.8	26	42	2.9	--
01/27/99	285.98	262.31	23.67	--	--	--	--	57,100	18,400	2440	1660	8690	< 200	--
04/27/99	285.98	265.98	20.00	--	--	--	--	121,000	22,500	11,500	2970	14,500	2000	--
07/23/99	285.98	255.45	31.09	0.70	--	--	--	--	--	--	--	--	--	--
11/01/99	285.98	255.45	21.03	--	--	--	--	138,000	23,900	14,700	3970	18,400	1180	--

Cumulative Table of Well Data and Analytical Results

Vertical Measurements are in feet.

Volumetric Measurements are in gallons.

Analytical results are in parts per billion (ppb)

DATE	Well Head Elev.	Ground Water Elev.	Depth To Water	Total			Notes	Analytical results are in parts per billion (ppb)						
				SPH Thickness	SPH Remove	SPH Removed		TPH- Gasoline	Benzene	Toluene	Ethyl- Benzene	Xylene	MTBE	Organic Lead
C-4														
03/26/85	273.01	257.87	15.14	--	--	--	--	--	--	--	--	--	--	--
07/03/86	273.01	257.64	15.37	--	--	--	--	--	--	--	--	--	--	--
03/26/87	273.01	--	--	--	--	--	--	--	--	--	--	--	--	--
03/28/88	273.01	254.97	18.04	--	--	--	--	--	--	--	--	--	--	--
03/10/89	273.01	--	--	--	--	--	--	--	--	--	--	--	--	--
04/03/89	273.01	259.67	13.34	--	--	--	--	--	--	--	--	--	--	--
05/08/89	273.01	257.41	15.60	--	--	--	--	--	--	--	--	--	--	--
06/05/89	273.01	256.50	16.51	--	--	--	--	--	--	--	--	--	--	--
07/12/90	273.01	256.02	16.99	--	--	--	--	--	--	--	--	--	--	--
08/10/90	273.01	255.74	17.27	--	--	--	--	--	--	--	--	--	--	--
09/13/89	273.01	254.85	18.16	--	--	--	--	57,000	21,000	3100	3200	11,000	--	--
10/04/89	273.01	254.77	18.24	--	--	--	--	--	--	--	--	--	--	--
11/03/89	273.01	254.84	18.17	--	--	--	--	--	--	--	--	--	--	--
12/04/89	273.01	254.56	18.45	--	--	--	--	48,000	17,000	2200	2800	9800	--	--
03/07/90	273.01	255.81	17.20	--	--	--	--	--	--	--	--	--	--	--
03/09/90	273.01	255.81	17.20	--	--	--	--	43,000	20,000	2300	2800	11,000	--	--
06/12/90	273.01	256.35	16.66	--	--	--	--	82,000	21,000	2400	4000	16,000	--	--
09/24/90	273.01	254.90	18.11	--	--	--	--	--	--	--	--	--	--	--
12/20/90	273.01	--	--	--	--	--	Abandoned	--	--	--	--	--	--	--

Cumulative Table of Well Data and Analytical Results

Vertical Measurements are in feet.

Volumetric Measurements are in gallons.

Analytical results are in parts per billion (ppb)

DATE	Well Head Elev.	Ground Water Elev.	Depth To Water	Total			Notes	Analytical results are in parts per billion (ppb)						
				SPH Thickness	SPH Remove	SPH Removed		TPH-Gasoline	Benzene	Toluene	Ethyl-Benzene	Xylene	MTBE	Organic Lead
C-5														
03/26/85	287.95	262.62	25.33	--	--	--	--	--	--	--	--	--	--	--
07/03/86	287.95	261.54	26.41	--	--	--	--	--	--	--	--	--	--	--
03/26/87	287.95	262.99	24.96	--	--	--	--	--	--	--	--	--	--	--
03/28/88	287.95	258.15	29.80	--	--	--	--	--	--	--	--	--	--	--
03/10/89	287.95	262.06	25.89	--	--	--	--	--	--	--	--	--	--	--
04/03/89	287.95	263.57	24.38	--	--	--	--	--	--	--	--	--	--	--
05/08/89	287.95	260.15	27.80	--	--	--	--	--	--	--	--	--	--	--
06/05/89	287.95	258.53	29.42	--	--	--	--	--	--	--	--	--	--	--
07/12/90	287.95	258.09	29.86	--	--	--	--	--	--	--	--	--	--	--
08/10/90	287.95	258.18	29.77	--	--	--	--	--	--	--	--	--	--	--
09/13/89	287.95	257.00	30.95	--	--	--	--	310	ND	ND	ND	ND	--	--
10/04/89	287.95	256.47	31.48	--	--	--	--	--	--	--	--	--	--	--
11/03/89	287.95	256.63	31.32	--	--	--	--	--	--	--	--	--	--	--
12/04/89	287.95	256.25	31.70	--	--	--	--	ND	ND	ND	ND	ND	--	--
03/07/90	287.95	257.67	30.28	--	--	--	--	--	--	--	--	--	--	--
03/09/90	287.95	257.67	30.28	--	--	--	--	ND	ND	ND	ND	ND	--	--
06/12/90	287.95	257.47	30.48	--	--	--	--	90	ND	ND	ND	ND	--	--
09/24/90	287.95	256.17	31.78	--	--	--	--	ND	ND	ND	ND	ND	--	--
12/20/90	287.95	254.66	33.29	--	--	--	--	170	ND	ND	1.0	0.7	--	--
03/27/91	287.95	259.97	27.98	--	--	--	--	--	--	--	--	--	--	--
06/18/91	287.95	255.43	32.52	--	--	--	--	--	--	--	--	--	--	--
09/12/91	287.95	254.58	33.37	--	--	--	--	--	--	--	--	--	--	--
01/23/92	287.95	255.28	32.67	--	--	--	--	--	--	--	--	--	--	--
04/13/92	287.95	259.47	28.48	--	--	--	--	140	ND	ND	0.7	ND	--	--
08/03/92	287.95	255.45	32.50	--	--	--	--	ND	ND	ND	ND	ND	--	ND
10/22/92	287.95	253.97	33.98	--	--	--	--	--	--	--	--	--	--	--
01/18/93	287.95	260.93	27.02	--	--	--	--	230	6.6	2.2	3.4	2.2	--	--
04/19/93	287.95	263.14	24.81	--	--	--	--	--	--	--	--	--	--	--
07/21-22/93	287.95	258.89	29.06	--	--	--	--	130	ND	0.6	ND	ND	--	--
10/25/93	287.95	257.00	30.95	--	--	--	--	--	--	--	--	--	--	--
01/21/94	287.95	256.04	31.91	--	--	--	--	ND	ND	ND	ND	ND	--	--
04/18/94	287.95	257.80	30.15	--	--	--	--	--	--	--	--	--	--	--
07/06-07/94	287.95	258.91	29.04	--	--	--	--	ND	ND	ND	ND	ND	--	--
10/07/94	287.95	256.11	31.84	--	--	--	--	--	--	--	--	--	--	--

CONTINUED ON NEXT PAGE

Cumulative Table of Well Data and Analytical Results

Vertical Measurements are in feet.

Volumetric Measurements are in gallons.

Analytical results are in parts per billion (ppb)

DATE	Well Head Elev.	Ground Water Elev.	Depth To Water	Total			Notes	Analytical results are in parts per billion (ppb)						
				SPH Thickness	SPH Remove	SPH Removed		TPH-Gasoline	Benzene	Toluene	Ethyl-Benzene	Xylene	MTBE	Organic Lead
C-5 (CONT'D)														
01/11/95	287.95	262.97	24.98	--	--	--	Sampled biannually	700	1.1	6.0	1.5	2.1	--	--
04/24/95	287.95	266.17	21.78	--	--	--	--	--	--	--	--	--	--	--
07/31/95	287.95	--	--	--	--	--	Inaccessible	--	--	--	--	--	--	--
10/02/95	287.95	257.77	30.18	--	--	--	--	--	--	--	--	--	--	--
01/16/96	287.95	261.23	26.72	--	--	--	--	200	<0.5	<0.5	<0.5	1.3	<2.5	--
04/18/96	287.95	266.15	21.80	--	--	--	--	--	--	--	--	--	--	--
07/22/96	287.95	--	--	--	--	--	Inaccessible	--	--	--	--	--	--	--
10/10/96	287.95	261.17	26.78	--	--	--	--	--	--	--	--	--	--	--
01/09/97	287.95	268.93	19.02	--	--	--	--	190	0.63	<0.5	<0.5	<0.5	<2.5	--
04/15/97	287.95	264.64	23.31	--	--	--	--	--	--	--	--	--	--	--
07/08/97	287.95	--	--	--	--	--	Inaccessible	--	--	--	--	--	--	--
10/22/97	287.95	--	--	--	--	--	Inaccessible	--	--	--	--	--	--	--
01/12/98	287.95	269.37	18.58	--	--	--	--	200	1.1	0.57	1.3	2.5	<2.5	--
04/21/98	287.95	272.75	15.20	--	--	--	--	--	--	--	--	--	--	--
07/08/98	287.95	264.76	23.19	--	--	--	--	52*	<0.5	<0.5	<0.5	<0.5	<2.5	--
10/13/98	287.95	261.95	26.00	--	--	--	--	--	--	--	--	--	--	--
01/27/99	287.95	263.97	23.98	--	--	--	--	<50	<0.5	<0.5	<0.5	<0.5	<2.0	--
04/27/99	287.95	267.29	20.66	--	--	--	--	--	--	--	--	--	--	--
07/23/99	287.95	266.73	21.22	--	--	--	--	80.7	<0.5	<0.5	<0.5	<0.5	<5.0	--
11/01/99	287.95	268.22	19.73	--	--	--	--	--	--	--	--	--	--	--

* Chromatogram pattern indicates an unidentified hydrocarbon.

Cumulative Table of Well Data and Analytical Results

Vertical Measurements are in feet.

Volumetric Measurements are in gallons.

Analytical results are in parts per billion (ppb)

DATE	Well Head Elev.	Ground Water Elev.	Depth To Water	Total			Notes	Analytical results are in parts per billion (ppb)						
				SPH Thickness	SPH Remove	SPH Removed		TPH-Gasoline	Benzene	Toluene	Ethyl-Benzene	Xylene	MTBE	Organic Lead
C-6														
03/26/85	--	--	16.74	--	--	--	--	--	--	--	--	--	--	--
07/03/86	275.28	257.82	17.46	--	--	--	--	--	--	--	--	--	--	--
03/26/87	275.28	256.91	18.37	--	--	--	--	--	--	--	--	--	--	--
03/28/88	275.28	245.44	29.84	--	--	--	--	--	--	--	--	--	--	--
03/10/89	275.28	260.84	14.44	--	--	--	--	--	--	--	--	--	--	--
04/03/89	275.28	260.84	14.44	--	--	--	--	--	--	--	--	--	--	--
05/08/89	275.28	258.12	17.16	--	--	--	--	--	--	--	--	--	--	--
06/05/89	275.28	256.77	18.51	--	--	--	--	--	--	--	--	--	--	--
07/12/90	275.28	256.57	18.71	--	--	--	--	--	--	--	--	--	--	--
08/10/90	275.28	255.96	19.32	--	--	--	--	--	--	--	--	--	--	--
09/13/89	275.28	255.33	19.95	--	--	--	--	47	5600	3000	2400	10,000	--	--
10/04/89	275.28	255.41	19.87	--	--	--	--	--	--	--	--	--	--	--
11/03/89	275.28	255.93	19.35	--	--	--	--	--	--	--	--	--	--	--
12/04/89	275.28	255.69	19.59	--	--	--	--	40,000	8100	1800	1700	7500	--	--
03/07/90	275.28	256.89	18.39	--	--	--	--	--	--	--	--	--	--	--
03/09/90	275.28	256.89	18.39	--	--	--	--	73,000	23,000	5900	3400	17,000	--	--
06/12/90	275.28	256.41	18.87	--	--	--	--	85,000	19,000	6500	3400	16,000	--	--
09/24/90	275.28	255.29	19.99	--	--	--	--	72,000	15,000	3200	2600	11,000	--	--
12/20/90	275.28	253.71	21.57	--	--	--	--	100,000	11,000	4200	3400	16,000	--	--
03/27/91	275.28	258.96	16.32	--	--	--	--	100,000	11,000	4400	2300	11,000	--	--
06/18/91	275.28	251.95	23.33	--	--	--	--	--	--	--	--	--	--	--
09/12/91	275.28	251.32	23.96	--	--	--	--	--	--	--	--	--	--	--
01/23/92	275.28	263.20	12.08	--	--	--	--	--	--	--	--	--	--	--
04/13/92	275.28	255.43	19.85	--	--	--	Sheen	--	--	--	--	--	--	--
08/03/92	275.28	260.56	14.72	--	--	--	--	120,000	16,000	1100	2300	15,000	--	ND
10/22/92	275.28	260.37	14.91	--	--	--	--	63,000	7400	920	1800	14,000	--	--
01/18/93	275.28	259.84	15.44	--	--	--	--	77,000	13,000	1600	2700	12,000	--	--
04/19/93	275.28	266.03	9.25	--	--	--	--	56,000	14,000	1100	2400	9100	--	--
07/21-22/93	275.28	257.93	17.35	--	--	--	--	38,000	6600	610	1500	5800	--	--
10/25/93	275.28	254.25	21.03	--	--	--	--	42,000	11,000	800	2200	8200	--	--
01/21/94	275.28	253.71	21.57	--	--	--	--	57,000	11,000	940	2300	9800	--	--
04/18/94	275.28	257.17	18.11	--	--	--	--	48,000	9800	830	1900	7500	--	--
07/06-07/94	275.28	258.28	17.00	--	--	--	--	46,000	6800	610	900	6200	--	--
10/07/94	275.28	256.09	19.19	--	--	--	--	35,000	5900	410	1400	3800	--	--

CONTINUED ON NEXT PAGE

Cumulative Table of Well Data and Analytical Results

Vertical Measurements are in feet.

Volumetric Measurements are in gallons.

Analytical results are in parts per billion (ppb)

DATE	Well	Ground	Depth	Total			Notes	Analytical results are in parts per billion (ppb)						
	Head Elev.	Water Elev.	To Water	SPH Thickness	SPH Remove	SPH Removed		TPH-Gasoline	Benzene	Toluene	Ethyl-Benzene	Xylene	MTBE	Organic Lead
C-6 (CONT'D)														
01/11/95	275.28	256.64	18.64	--	--	--	--	54,000	1200	1100	2100	9500	--	--
04/24/95	275.28	262.72	12.56	--	--	--	--	81,000	12,000	1500	2400	9900	--	--
07/31/95	275.28	259.54	15.74	--	--	--	--	75,000	12,000	1200	2800	11,000	--	--
10/02/95	275.28	257.56	17.72	--	--	--	--	59,000	13,000	990	2800	10,000	--	--
01/16/96	275.28	259.81	15.47	--	--	--	--	63,000	10,000	650	2200	7500	<500	--
04/18/96	275.28	259.33	15.95	--	--	--	--	56,000	9800	590	1500	5800	660	--
07/22/96	275.28	--	--	--	--	--	Inaccessible	--	--	--	--	--	--	--
10/10/96	275.28	--	--	--	--	--	Inaccessible	--	--	--	--	--	--	--
01/09/97	275.28	--	--	--	--	--	Inaccessible	--	--	--	--	--	--	--
04/15/97	275.28	--	--	--	--	--	Inaccessible	--	--	--	--	--	--	--
07/08/97	275.28	--	--	--	--	--	Inaccessible	--	--	--	--	--	--	--
07/15/97	275.28	260.95	14.33	--	--	--	--	64,000	12,000	400	1500	4400	1000	--
10/22/97	275.28	261.80	13.48	--	--	--	--	49,000	15,000	570	1900	5600	1500	--
01/12/98	275.28	265.14	10.14	--	--	--	--	60,000	16,000	540	1800	5400	1000	--
04/21/98	275.28	267.73	7.55	--	--	--	--	51,000	16,000	310	1400	3400	1000	--
07/08/98	275.28	262.80	12.48	--	--	--	--	19,000	8200	150	720	1100	<250	--
10/13/98	275.28	259.82	15.46	--	--	--	--	46,000	12,000	490	1600	3600	<250	--
01/27/99	275.28	263.32	11.96	--	--	--	--	16,000	4440	132	688	1290	190	--
04/27/99	275.28	263.15	12.13	--	--	--	--	38,800	13,100	403	1540	3430	1250	--
07/23/99	275.28	261.82	13.46	--	--	--	--	33,400	9460	182	1030	2040	1000	--
11/01/99	275.28	262.01	13.27	--	--	--	--	23,700	7250	335	775	882	161	--

Cumulative Table of Well Data and Analytical Results

Vertical Measurements are in feet.

Volumetric Measurements are in gallons.

Analytical results are in parts per billion (ppb)

DATE	Well Head Elev.	Ground Water Elev.	Depth To Water	Volumetric Measurements			Notes	Analytical results						
				SPH Thickness	SPH Remove	Total SPH Removed		TPH-Gasoline	Benzene	Toluene	Ethyl-Benzene	Xylene	MTBE	Organic Lead
C-7														
03/26/85	--	--	9.61	--	--	--	--	--	--	--	--	--	--	--
07/03/86	270.70	259.96	10.74	--	--	--	--	--	--	--	--	--	--	--
03/26/87	270.70	260.62	10.08	--	--	--	--	--	--	--	--	--	--	--
03/28/88	270.70	256.91	13.79	--	--	--	--	--	--	--	--	--	--	--
03/10/89	270.70	260.28	10.42	--	--	--	--	--	--	--	--	--	--	--
04/03/89	270.70	261.56	9.14	--	--	--	--	--	--	--	--	--	--	--
05/08/89	270.70	258.79	11.91	--	--	--	--	--	--	--	--	--	--	--
06/05/89	270.70	259.16	11.54	--	--	--	--	--	--	--	--	--	--	--
07/12/90	270.70	257.25	13.45	--	--	--	--	--	--	--	--	--	--	--
08/10/90	270.70	257.33	13.37	--	--	--	--	--	--	--	--	--	--	--
09/13/89	270.70	256.10	14.60	--	--	--	--	410	1.3	ND	10	ND	--	--
10/04/89	270.70	255.53	15.17	--	--	--	--	--	--	--	--	--	--	--
11/03/89	270.70	255.42	15.28	--	--	--	--	--	--	--	--	--	--	--
12/04/89	270.70	255.00	15.70	--	--	--	--	1000	1.0	ND	5.0	ND	--	--
03/07/90	270.70	256.48	14.22	--	--	--	--	--	--	--	--	--	--	--
03/09/90	270.70	256.48	14.22	--	--	--	--	590	2.8	2.4	3.5	2.0	--	--
06/12/90	270.70	256.52	14.18	--	--	--	--	1200	ND	5.0	8.2	3.2	--	--
09/24/90	270.70	255.26	15.44	--	--	--	Sheen	400	1.4	1.9	1.4	2.2	--	--
09/24/90	270.70	255.26	15.44	--	--	--	Duplicate	580	ND	2.4	1.4	1.5	--	--
12/20/90	270.70	253.62	17.08	--	--	--	--	2300	ND	6.5	4.7	9.3	--	--
03/27/91	270.70	258.05	12.65	--	--	--	--	980	ND	2.4	9.1	3.0	--	--
06/18/91	270.70	254.26	16.44	--	--	--	--	--	--	--	--	--	--	--
09/12/91	270.70	253.65	17.05	--	--	--	--	1200	ND	3.1	6.5	2.7	--	--
01/23/92	270.70	253.78	16.92	--	--	--	--	--	--	--	--	--	--	--
04/13/92	270.70	257.70	13.00	--	--	--	--	830	ND	1.0	7.8	1.2	--	--
08/03/92	270.70	--	--	--	--	--	--	--	--	--	--	--	--	--
10/22/92	270.70	--	--	--	--	--	Could not locate	--	--	--	--	--	--	--
01/18/93	270.70	--	--	--	--	--	Could not locate	--	--	--	--	--	--	--
04/19/93	270.70	--	--	--	--	--	Could not locate	--	--	--	--	--	--	--
07/21-22/93	270.70	257.76	12.94	--	--	--	--	890	0.9	3.0	4.0	4.0	--	--
10/25/93	270.70	255.87	14.83	--	--	--	--	--	--	--	--	--	--	--
01/21/94	270.70	254.76	15.94	--	--	--	--	660	ND	6.0	1.0	3.0	--	--
04/18/94	270.70	255.72	14.98	--	--	--	--	--	--	--	--	--	--	--
07/06-07/94	270.70	257.76	12.94	--	--	--	--	960	ND	5.8	4.2	8.2	--	--
10/07/94	270.70	254.87	15.83	--	--	--	--	--	--	--	--	--	--	--

CONTINUED ON NEXT PAGE

Cumulative Table of Well Data and Analytical Results

Vertical Measurements are in feet.

Volumetric Measurements are in gallons.

Analytical results are in parts per billion (ppb)

DATE	Well Head Elev.	Ground Water Elev.	Depth To Water	Total			Notes	Analytical results are in parts per billion (ppb)						
				SPH Thickness	SPH Remove	SPH Removed		TPH-Gasoline	Benzene	Toluene	Ethyl-Benzene	Xylene	MTBE	Organic Lead
C-7 (CONT'D)														
01/11/95	270.70	261.45	9.25	--	--	--	Sampled biannually	900	<0.5	<0.5	2.3	1.3	--	--
04/24/95	270.70	264.00	6.70	--	--	--	--	--	--	--	--	--	--	--
07/31/95	270.70	259.46	11.24	--	--	--	--	690	<1.2	<1.2	<1.2	<1.2	--	--
10/02/95	270.70	256.68	14.02	--	--	--	--	--	--	--	--	--	--	--
01/16/96	270.70	259.48	11.22	--	--	--	--	<50	<0.5	<0.5	<0.5	<0.5	<2.5	--
04/18/96	270.70	264.05	6.65	--	--	--	--	--	--	--	--	--	--	--
07/22/96	270.70	259.60	11.10	--	--	--	--	360	4.4	2.0	<0.5	<0.5	17	--
10/10/96	270.70	259.35	11.35	--	--	--	--	--	--	--	--	--	--	--
01/09/97	270.70	266.82	3.88	--	--	--	--	69	<0.5	<0.5	<0.5	<0.5	<2.5	--
04/15/97	270.70	262.82	7.88	--	--	--	--	--	--	--	--	--	--	--
07/08/97	270.70	261.70	9.00	--	--	--	--	710	8.0	1.2	<0.5	<0.5	22	--
10/22/97	270.70	262.09	8.61	--	--	--	--	--	--	--	--	--	--	--
01/12/98	270.70	267.03	3.67	--	--	--	--	400	7.2	<1.0	1.6	1.3	16	--
04/21/98	270.70	270.19	0.51	--	--	--	--	--	--	--	--	--	--	--
07/08/98	270.70	263.72	6.98	--	--	--	--	<50	<0.5	<0.5	<0.5	<0.5	<2.5	--
10/13/98	270.70	261.58	9.12	--	--	--	--	--	--	--	--	--	--	--
01/27/99	270.70	262.15	8.55	--	--	--	--	<50	<0.5	<0.5	<0.5	<0.5	<2.0	--
04/27/99	270.70	265.75	4.95	--	--	--	--	--	--	--	--	--	--	--
07/23/99	270.70	265.60	5.10	--	--	--	--	500	7.84	0.983	1.71	0.658	<5.0	--
11/01/99	270.70	263.41	7.29	--	--	--	--	--	--	--	--	--	--	--

Cumulative Table of Well Data and Analytical Results

Vertical Measurements are in feet.

Volumetric Measurements are in gallons.

Analytical results are in parts per billion (ppb)

DATE	Well Head Elev.	Ground Water Elev.	Depth To Water	Total			Notes	TPH- Gasoline	Benzene	Toluene	Ethyl- Benzene	Xylene	MTBE	Organic Lead
				SPH Thickness	SPH Remove	SPH Removed								
C-8														
03/26/85	--	--	8.68	--	--	--	--	--	--	--	--	--	--	--
07/03/86	288.40	274.51	13.89	--	--	--	--	--	--	--	--	--	--	--
03/26/87	288.40	282.39	6.01	--	--	--	--	--	--	--	--	--	--	--
03/28/88	288.40	277.74	10.66	--	--	--	--	--	--	--	--	--	--	--
03/10/89	288.40	281.79	6.61	--	--	--	--	--	--	--	--	--	--	--
04/03/89	288.40	281.94	6.46	--	--	--	--	--	--	--	--	--	--	--
05/08/89	288.40	279.43	8.97	--	--	--	--	--	--	--	--	--	--	--
06/05/89	288.40	277.52	10.88	--	--	--	--	--	--	--	--	--	--	--
07/12/90	288.40	276.25	12.15	--	--	--	--	--	--	--	--	--	--	--
08/10/90	288.40	275.94	12.46	--	--	--	--	--	--	--	--	--	--	--
09/13/89	288.40	275.62	12.78	--	--	--	--	ND	ND	ND	ND	ND	--	--
10/04/89	288.40	275.89	12.51	--	--	--	--	--	--	--	--	--	--	--
11/03/89	288.40	273.77	14.63	--	--	--	--	--	--	--	--	--	--	--
12/04/89	288.40	278.81	9.59	--	--	--	--	64	0.6	0.6	ND	1.0	--	--
03/07/90	288.40	279.60	8.80	--	--	--	--	--	--	--	--	--	--	--
03/09/90	288.40	279.60	8.80	--	--	--	--	ND	ND	ND	ND	ND	--	--
06/12/90	288.40	279.46	8.94	--	--	--	--	120	2.5	1.2	1.0	1.4	--	--
09/24/90	288.40	274.86	13.54	--	--	--	--	--	--	--	--	--	--	--
12/20/90	288.40	279.07	9.33	--	--	--	--	--	--	--	--	--	--	--
03/27/91	288.40	282.30	6.10	--	--	--	--	54	0.7	ND	0.7	1.9	--	--
06/18/91	288.40	276.44	11.96	--	--	--	--	--	--	--	--	--	--	--
09/12/91	288.40	274.80	13.60	--	--	--	--	ND	ND	ND	ND	ND	--	--
09/12/91	288.40	274.80	13.60	--	--	--	Duplicate	ND	ND	ND	ND	ND	--	--
01/23/92	288.40	264.20	24.20	--	--	--	--	--	--	--	--	--	--	--
04/13/92	288.40	280.05	8.35	--	--	--	--	ND	ND	ND	ND	ND	--	--
08/03/92	288.40	275.82	12.58	--	--	--	--	ND	ND	ND	ND	ND	--	ND
10/22/92	288.40	275.30	13.10	--	--	--	--	ND	ND	ND	ND	ND	--	--
01/18/93	288.40	282.28	6.12	--	--	--	--	ND	ND	ND	ND	ND	--	--
04/19/93	288.40	281.35	7.05	--	--	--	--	ND	ND	ND	ND	ND	--	--
07/21-22/93	288.40	277.05	11.35	--	--	--	--	ND	ND	ND	ND	ND	--	--
10/25/93	288.40	275.55	12.85	--	--	--	--	ND	ND	ND	ND	ND	--	--
01/21/94	288.40	277.85	10.55	--	--	--	--	ND	ND	ND	ND	ND	--	--
04/18/94	288.40	278.89	9.51	--	--	--	--	ND	1.2	0.9	ND	1.6	--	--
07/06-07/94	288.40	277.02	11.38	--	--	--	--	ND	ND	ND	ND	ND	--	--
10/07/94	288.40	275.48	12.92	--	--	--	--	ND	ND	ND	ND	ND	--	--

CONTINUED ON NEXT PAGE

Cumulative Table of Well Data and Analytical Results

Vertical Measurements are in feet.

Volumetric Measurements are in gallons.

Analytical results are in parts per billion (ppb)

DATE	Well	Ground	Depth	Total			Notes	Analytical results are in parts per billion (ppb)						
	Head Elev.	Water Elev.	To Water	SPH Thickness	SPH Remove	SPH Removed		TPH-Gasoline	Benzene	Toluene	Ethyl-Benzene	Xylene	MTBE	Organic Lead
C-8 (CONT'D)														
01/11/95	288.40	283.04	5.36	--	--	--	--	<50	<0.5	<0.5	<0.5	<0.5	--	--
04/24/95	288.40	281.82	6.58	--	--	--	--	<50	<0.5	0.61	<0.5	0.51	--	--
07/31/95	288.40	278.94	9.46	--	--	--	--	<50	<0.5	<0.5	<0.5	<0.5	--	--
10/02/95	288.40	276.56	11.84	--	--	--	--	<50	<0.5	<0.5	<0.5	<0.5	--	--
01/16/96	288.40	281.40	7.00	--	--	--	--	<50	<0.5	<0.5	<0.5	<0.5	5.4	--
04/18/96	288.40	281.77	6.63	--	--	--	--	<50	<0.5	<0.5	<0.5	<0.5	<2.5	--
07/22/96	288.40	280.49	7.91	--	--	--	--	<50	<0.5	<0.5	<0.5	<0.5	<2.5	--
10/10/96	288.40	279.71	8.69	--	--	--	--	<50	<0.5	<0.5	<0.5	<0.5	<2.5	--
01/09/97	288.40	283.11	5.29	--	--	--	--	<50	<0.5	<0.5	<0.5	<0.5	<2.5	--
04/15/97	288.40	281.90	6.50	--	--	--	--	<50	<0.5	<0.5	<0.5	<0.5	<2.5	--
07/08/97	288.40	281.90	6.50	--	--	--	--	<50	<0.5	<0.5	<0.5	<0.5	<2.5	--
10/22/97	288.40	283.00	5.40	--	--	--	--	<50	<0.5	<0.5	<0.5	<0.5	<2.5	--
01/12/98	288.40	284.27	4.13	--	--	--	--	<50	<0.5	<0.5	<0.5	<0.5	<2.5	--
04/21/98	288.40	283.84	4.56	--	--	--	--	<50	<0.5	<0.5	<0.5	<0.5	<2.5	--
07/08/98	288.40	277.81	10.59	--	--	--	--	<50	<0.5	0.57	<0.5	<0.5	<2.5	--
10/13/98	288.40	276.32	12.08	--	--	--	--	<50	<0.5	<0.5	<0.5	<0.5	<2.5	--
01/27/99	288.40	276.89	11.51	--	--	--	--	<50	<0.5	<0.5	<0.5	<0.5	<2.0	--
04/27/99	288.40	282.40	6.00	--	--	--	--	<50	<0.5	<0.5	<0.5	<0.5	<5.0	--
07/23/99	288.40	282.13	6.27	--	--	--	--	<50	<0.5	<0.5	<0.5	<0.5	<5.0	--
11/01/99	288.40	282.30	6.10	--	--	--	--	<50	<0.5	<0.5	<0.5	<0.5	<2.5	--

Cumulative Table of Well Data and Analytical Results

Vertical Measurements are in feet.

Volumetric Measurements are in gallons.

Analytical results are in parts per billion (ppb)

DATE	Well Head Elev.	Ground Water Elev.	Depth To Water	Total			Notes	TPH- Gasoline	Benzene	Toluene	Ethyl- Benzene	Xylene	MTBE	Organic Lead
				SPH Thickness	SPH Remove	SPH Removed								
C-9														
07/03/86	268.46	254.57	13.89	--	--	--	--	--	--	--	--	--	--	--
03/26/87	268.46	254.72	13.74	--	--	--	--	--	--	--	--	--	--	--
03/28/88	268.46	253.47	14.99	--	--	--	--	--	--	--	--	--	--	--
03/10/89	268.46	255.07	13.39	--	--	--	--	--	--	--	--	--	--	--
04/03/89	268.46	255.62	12.84	--	--	--	--	--	--	--	--	--	--	--
05/08/89	268.46	254.08	14.38	--	--	--	--	--	--	--	--	--	--	--
06/05/89	268.46	253.10	15.36	--	--	--	--	--	--	--	--	--	--	--
07/12/90	268.46	252.81	15.65	--	--	--	--	--	--	--	--	--	--	--
08/10/90	268.46	252.66	15.80	--	--	--	--	--	--	--	--	--	--	--
09/13/89	268.46	251.93	16.53	--	--	--	42,000	14,000	1100	2800	4200	--	--	--
10/04/89	268.46	251.94	16.52	--	--	--	--	--	--	--	--	--	--	--
11/03/89	268.46	251.95	16.51	--	--	--	--	--	--	--	--	--	--	--
12/04/89	268.46	251.67	16.79	--	--	--	36,000	11,000	670	2500	3800	--	--	--
03/07/90	268.46	252.24	16.22	--	--	--	--	--	--	--	--	--	--	--
03/09/90	268.46	252.24	16.22	--	--	--	28,000	12,000	940	3000	4700	--	--	--
06/12/90	268.46	253.58	14.88	--	--	--	39,000	11,000	1600	2300	4800	--	--	--
09/24/90	268.46	252.16	16.30	--	--	--	120,000	13,000	1600	3700	6800	--	--	--
12/20/90	268.46	251.23	17.23	--	--	--	51,000	9300	560	2800	3300	--	--	--
12/20/90	268.46	251.23	17.23	--	--	--	44,000	12,000	580	2800	3500	--	--	--
03/27/91	268.46	254.68	13.78	--	--	--	56,000	3400	5000	1600	5600	--	--	--
06/18/91	268.46	249.82	18.64	--	--	--	--	--	--	--	--	--	--	--
09/12/91	268.46	--	--	--	--	--	--	--	--	--	--	--	--	--
10/24/95	268.46	250.39	18.07	--	--	--	30,000	7200	440	2500	1600	--	--	--
01/16/96	268.46	252.18	16.28	--	--	--	36,000	8200	700	2500	2100	< 500	--	--
07/08/98	268.46	256.46	12.00	--	--	--	20,000	4900	880	1100	2500	< 250	--	--
10/13/98	268.46	254.19	14.27	--	--	--	28,000	7100	1100	1300	2700	< 125	--	--
01/27/99	268.46	256.92	11.54	--	--	--	12,100	3490	249	654	1260	131	--	--
04/27/99	268.46	257.46	11.00	--	--	--	42,400	12,500	732	3060	2760	1000	--	--
07/23/99	268.46	257.16	11.30	--	--	--	28,800	7420	418	1900	1720	1000	--	--
11/01/99	268.46	257.02	11.44	--	--	--	10,100	2050	227	628	830	933	--	--

Cumulative Table of Well Data and Analytical Results

Vertical Measurements are in feet.

Volumetric Measurements are in gallons.

Analytical results are in parts per billion (ppb)

DATE	Well Head Elev.	Ground Water Elev.	Depth To Water	Total			Notes	Analytical results are in parts per billion (ppb)							
				SPH Thickness	SPH Remove	SPH Removed		TPH- Gasoline	Benzene	Toluene	Ethyl- Benzene	Xylene	MTBE	Organic Lead	
C-10A															
03/07/90	264.84	244.63	20.21	--	--	--	--	--	--	--	--	--	--	--	--
03/09/90	264.84	--	--	--	--	--	--	ND	1.6	0.7	0.8	3.5	--	--	--
06/12/90	264.84	245.14	19.70	--	--	--	--	ND	ND	ND	ND	ND	--	--	--
09/24/90	264.84	245.30	19.54	--	--	--	--	ND	ND	ND	ND	ND	--	--	--
12/20/90	264.84	245.00	19.84	--	--	--	--	ND	ND	ND	ND	ND	--	--	--
03/27/91	264.84	246.83	18.01	--	--	--	--	--	--	--	--	--	--	--	--
06/18/91	264.84	244.68	20.16	--	--	--	--	ND	ND	ND	ND	ND	--	--	--
09/12/91	264.84	244.27	20.57	--	--	--	--	ND	ND	ND	ND	ND	--	--	--
01/23/92	264.84	244.17	20.67	--	--	--	--	ND	ND	ND	ND	ND	--	--	--
04/13/92	264.84	245.44	19.40	--	--	--	--	53	0.9	1.3	ND	1.0	--	--	--
08/03/92	264.84	245.03	19.81	--	--	--	--	ND	ND	ND	ND	ND	--	ND	--
10/22/92	264.84	245.01	19.83	--	--	--	--	ND	ND	ND	ND	0.5	--	--	--
01/18/93	264.84	247.80	17.04	--	--	--	--	ND	ND	ND	ND	ND	--	--	--
04/19/93	264.84	247.07	17.77	--	--	--	--	ND	ND	ND	ND	ND	--	--	--
04/19/93	264.84	247.28	17.56	--	--	--	--	ND	ND	ND	ND	ND	--	--	--
10/25/93	264.84	247.07	17.77	--	--	--	--	ND	ND	ND	ND	ND	--	--	--
01/21/94	264.84	246.93	17.91	--	--	--	--	ND	ND	ND	ND	ND	--	--	--
04/18/94	264.84	247.81	17.03	--	--	--	--	ND	3.0	3.0	1.4	5.5	--	--	--
07/06-07/94	264.84	248.06	16.78	--	--	--	--	ND	ND	ND	ND	ND	--	--	--
10/07/94	264.84	247.63	17.21	--	--	--	--	ND	ND	ND	ND	ND	--	--	--
01/11/95	264.84	248.78	16.06	--	--	--	--	<50	<0.5	<0.5	<0.5	<0.5	<0.5	--	--
04/24/95	264.84	248.32	16.52	--	--	--	--	<50	<0.5	<0.5	<0.5	<0.5	<0.5	--	--
07/31/95	264.84	245.82	19.02	--	--	--	--	<50	<0.5	<0.5	<0.5	<0.5	<0.5	--	--
10/02/95	264.84	245.14	19.70	--	--	--	--	<50	<0.5	<0.5	<0.5	<0.5	<0.5	--	--
01/16/96	264.84	246.21	18.63	--	--	--	--	<50	<0.5	<0.5	<0.5	<0.5	<2.5	--	--
04/18/96	264.84	247.19	17.65	--	--	--	--	<50	<0.5	<0.5	<0.5	<0.5	<2.5	--	--
07/22/96	264.84	245.99	18.85	--	--	--	--	<50	<0.5	<0.5	<0.5	<0.5	<2.5	--	--
10/10/96	264.84	245.40	19.44	--	--	--	--	<50	<0.5	<0.5	<0.5	<0.5	<2.5	--	--
01/09/97	264.84	248.00	16.84	--	--	--	--	<50	<0.5	<0.5	<0.5	<0.5	<2.5	--	--
04/15/97	264.84	246.47	18.37	--	--	--	--	<50	<0.5	<0.5	<0.5	<0.5	<2.5	--	--
07/08/97	264.84	246.33	18.51	--	--	--	--	<50	<0.5	<0.5	<0.5	<0.5	<2.5	--	--
10/22/97	264.84	246.64	18.20	--	--	--	--	<50	<0.5	<0.5	<0.5	<0.5	<2.5	--	--

CONTINUED ON NEXT PAGE

Cumulative Table of Well Data and Analytical Results

Vertical Measurements are in feet.

Volumetric Measurements are in gallons.

Analytical results are in parts per billion (ppb)

DATE	Well Head Elev.	Ground Water Elev.	Depth To Water	Total			Notes	Analytical results are in parts per billion (ppb)							
				SPH Thickness	SPH Remove	SPH Removed		TPH-Gasoline	Benzene	Toluene	Ethyl-Benzene	Xylene	MTBE	Organic Lead	
C-10A (CONT'D)															
01/12/98	264.84	248.00	16.84	--	--	--	--	<50	<0.5	<0.5	<0.5	<0.5	<0.5	<2.5	--
04/21/98	264.84	248.04	16.80	--	--	--	--	<50	<0.5	<0.5	<0.5	<0.5	<0.5	<2.5	--
07/08/98	264.84	246.89	17.95	--	--	--	--	<50	<0.5	0.57	<0.5	<0.5	<0.5	<2.5	--
10/13/98	264.84	246.16	18.68	--	--	--	--	<50	1.3	<0.5	0.67	1.5	<2.5	--	
01/27/99	264.84	246.96	17.88	--	--	--	--	79.2	<0.5	<0.5	<0.5	<0.5	<2.0	--	
04/27/99	264.84	247.53	17.31	--	--	--	--	<50	<0.5	<0.5	<0.5	<0.5	<5.0	--	
07/23/99	264.84	246.27	18.57	--	--	--	--	<50	<0.5	<0.5	<0.5	<0.5	<5.0	--	
11/01/99	264.84	246.75	18.09	--	--	--	--	<50	<0.5	<0.5	<0.5	<0.5	<2.5	--	

Cumulative Table of Well Data and Analytical Results

Vertical Measurements are in feet.

Volumetric Measurements are in gallons.

Analytical results are in parts per billion (ppb)

DATE	Well	Ground	Depth	Total			Notes	Analytical results are in parts per billion (ppb)						
	Head Elev.	Water Elev.	To Water	SPH Thickness	SPH Remove	SPH Removed		TPH-Gasoline	Benzene	Toluene	Ethyl-Benzene	Xylene	MTBE	Organic Lead
C-10B														
03/07/90	264.85	243.41	21.44	--	--	--	--	--	--	--	--	--	--	--
06/12/90	264.85	244.91	19.94	--	--	--	--	ND	ND	ND	ND	ND	--	--
09/24/90	264.85	245.08	19.77	--	--	--	--	ND	ND	ND	ND	ND	--	--
12/20/90	264.85	244.85	20.00	--	--	--	--	ND	ND	ND	ND	ND	--	--
03/27/91	264.85	246.62	18.23	--	--	--	--	--	--	--	--	--	--	--
06/18/91	264.85	244.41	20.44	--	--	--	--	--	--	--	--	--	--	--
09/12/91	264.85	244.03	20.82	--	--	--	--	ND	ND	ND	ND	ND	--	--
01/23/92	264.85	243.93	20.92	--	--	--	--	ND	ND	ND	ND	ND	--	--
04/13/92	264.85	245.17	19.68	--	--	--	--	ND	ND	ND	ND	ND	--	--
08/03/92	264.85	244.78	20.07	--	--	--	--	ND	ND	ND	ND	ND	--	ND
10/22/92	264.85	244.73	20.12	--	--	--	--	ND	ND	ND	ND	ND	--	--
01/18/93	264.85	247.49	17.36	--	--	--	--	60	3.3	11	2.1	8.9	--	--
04/19/93	264.85	246.95	17.90	--	--	--	--	ND	ND	ND	ND	ND	--	--
07/21-22/93	264.85	246.99	17.86	--	--	--	--	ND	ND	ND	ND	ND	--	--
10/25/93	264.85	246.75	18.10	--	--	--	--	ND	ND	ND	ND	ND	--	--
01/21/94	264.85	246.62	18.23	--	--	--	--	ND	ND	ND	ND	ND	--	--
04/18/94	264.85	247.49	17.36	--	--	--	--	ND	ND	ND	ND	0.5	--	--
07/06-07/94	264.85	247.80	17.05	--	--	--	--	ND	ND	ND	ND	ND	--	--
10/07/94	264.85	247.31	17.54	--	--	--	--	ND	ND	ND	ND	ND	--	--
01/11/95	264.85	248.61	16.24	--	--	--	--	<50	<0.5	<0.5	<0.5	<0.5	--	--
04/24/95	264.85	247.95	16.90	--	--	--	--	<50	<0.5	<0.5	<0.5	<0.5	--	--
07/31/95	264.85	245.57	19.28	--	--	--	--	<50	<0.5	<0.5	<0.5	<0.5	--	--
10/02/95	264.85	244.91	19.94	--	--	--	--	<50	<0.5	<0.5	<0.5	<0.5	--	--
01/16/96	264.85	246.25	18.60	--	--	--	--	<50	<0.5	<0.5	<0.5	<0.5	<2.5	--
04/18/96	264.85	246.87	17.98	--	--	--	--	<50	<0.5	<0.5	<0.5	<0.5	<2.5	--
07/22/96	264.85	245.75	19.10	--	--	--	--	<50	<0.5	<0.5	<0.5	<0.5	<2.5	--
10/10/96	264.85	245.14	19.71	--	--	--	--	<50	<0.5	<0.5	<0.5	<0.5	<2.5	--
01/09/97	264.85	247.65	17.20	--	--	--	--	<50	<0.5	<0.5	<0.5	<0.5	<2.5	--
04/15/97	264.85	246.11	18.74	--	--	--	--	<50	<0.5	<0.5	<0.5	<0.5	<2.5	--
07/08/97	264.85	246.10	18.75	--	--	--	--	<50	<0.5	<0.5	<0.5	<0.5	<2.5	--
10/22/97	264.85	246.35	18.50	--	--	--	--	<50	<0.5	<0.5	<0.5	<0.5	<2.5	--
01/12/98	264.85	247.71	17.14	--	--	--	--	<50	<0.5	<0.5	<0.5	<0.5	<2.5	--
04/21/98	264.85	247.69	17.16	--	--	--	--	<50	<0.5	<0.5	<0.5	<0.5	<2.5	--
07/08/98	264.85	246.61	18.24	--	--	--	--	<50	<0.5	0.62	<0.5	<0.5	<2.5	--
10/13/98	264.85	245.93	18.92	--	--	--	--	<50	<0.5	<0.5	<0.5	<0.5	<2.5	--

CONTINUED ON NEXT PAGE

Cumulative Table of Well Data and Analytical Results

Vertical Measurements are in feet.

Volumetric Measurements are in gallons.

Analytical results are in parts per billion (ppb)

DATE	Vertical Measurements are in feet.			Volumetric Measurements are in gallons.				Analytical results are in parts per billion (ppb)						
	Well Head Elev.	Ground Water Elev.	Depth To Water	SPH Thickness	SPH Remove	Total SPH Removed	Notes	TPH-Gasoline	Benzene	Toluene	Ethyl-Benzene	Xylene	MTBE	Organic Lead
C-10B (CONT'D)														
01/27/99	264.85	246.74	18.11	--	--	--	--	<50	<0.5	<0.5	<0.5	<0.5	<2.0	--
04/27/99	264.85	247.26	17.59	--	--	--	--	<50	<0.5	<0.5	<0.5	<0.5	<5.0	--
07/23/99	264.85	246.70	18.15	--	--	--	--	<50	<0.5	<0.5	<0.5	<0.5	<5.0	--
11/01/99	264.85	247.16	17.69	--	--	--	--	<50	<0.5	<0.5	<0.5	<0.5	<2.5	--

Cumulative Table of Well Data and Analytical Results

Vertical Measurements are in feet.

Volumetric Measurements are in gallons.

Analytical results are in parts per billion (ppb)

DATE	Well Head Elev.	Ground Water Elev.	Depth To Water	Total			Notes	Analytical results are in parts per billion (ppb)						
				SPH Thickness	SPH Remove	SPH Removed		TPH-Gasoline	Benzene	Toluene	Ethyl-Benzene	Xylene	MTBE	Organic Lead
C-11														
03/07/90	265.30	242.56	22.74	--	--	--	--	--	--	--	--	--	--	--
03/09/90	265.30	--	--	--	--	--	--	ND	1.2	0.7	ND	1.4	--	--
06/12/90	265.30	243.32	21.98	--	--	--	--	ND	ND	ND	ND	ND	--	--
09/24/90	265.30	243.42	21.88	--	--	--	--	ND	ND	ND	ND	ND	--	--
12/20/90	265.30	242.12	23.18	--	--	--	--	ND	ND	ND	ND	ND	--	--
03/27/91	265.30	243.78	21.52	--	--	--	--	ND	ND	ND	ND	1.5	--	--
06/18/91	265.30	243.40	21.90	--	--	--	--	--	--	--	--	--	--	--
09/12/91	265.30	242.60	22.70	--	--	--	--	ND	ND	ND	ND	ND	--	--
01/23/92	265.30	241.84	23.46	--	--	--	--	ND	ND	ND	ND	ND	--	--
04/13/92	265.30	243.73	21.57	--	--	--	--	ND	ND	ND	ND	ND	--	--
08/03/92	265.30	242.63	22.67	--	--	--	--	ND	ND	ND	ND	ND	--	ND
10/22/92	265.30	242.01	23.29	--	--	--	--	ND	ND	ND	ND	ND	--	--
01/18/93	265.30	243.94	21.36	--	--	--	--	ND	ND	1.2	ND	2.2	--	--
04/19/93	265.30	245.33	19.97	--	--	--	--	ND	ND	ND	ND	ND	--	--
07/21-22/93	265.30	244.65	20.65	--	--	--	--	ND	ND	ND	ND	ND	--	--
10/25/93	265.30	244.55	20.75	--	--	--	--	ND	ND	ND	ND	ND	--	--
01/21/94	265.30	243.69	21.61	--	--	--	--	ND	ND	ND	ND	ND	--	--
04/18/94	265.30	244.52	20.78	--	--	--	--	ND	ND	ND	ND	ND	--	--
07/06-07/94	265.30	244.88	20.42	--	--	--	--	ND	ND	ND	ND	ND	--	--
10/07/94	265.30	243.70	21.60	--	--	--	--	ND	ND	ND	ND	ND	--	--
01/11/95	265.30	245.28	20.02	--	--	--	--	<50	<0.5	<0.5	<0.5	<0.5	--	--
04/24/95	265.30	247.58	17.72	--	--	--	--	<50	<0.5	<0.5	<0.5	<0.5	--	--
07/31/95	265.30	246.12	19.18	--	--	--	--	<50	<0.5	<0.5	<0.5	<0.5	--	--
10/02/95	265.30	244.88	20.42	--	--	--	--	<50	<0.5	<0.5	<0.5	<0.5	--	--
01/16/96	265.30	245.48	19.82	--	--	--	--	<50	<0.5	<0.5	<0.5	<0.5	<2.5	--
04/18/96	265.30	248.30	17.00	--	--	--	--	260	7.9	6.9	5.3	23	11	--
07/22/96	265.30	248.40	16.90	--	--	--	--	<50	<0.5	<0.5	<0.5	<0.5	<2.5	--
10/10/96	265.30	245.74	19.56	--	--	--	--	130	32	2.7	4.3	14	3.4	--
01/09/97	265.30	249.28	16.02	--	--	--	--	75	5.3	6.4	2.0	9.0	<2.5	--
04/15/97	265.30	247.35	17.95	--	--	--	--	<50	<0.5	<0.5	<0.5	<0.5	<2.5	--
07/08/97	265.30	245.55	19.75	--	--	--	--	<50	<0.5	<0.5	<0.5	<0.5	<2.5	--
10/22/97	265.30	245.74	19.56	--	--	--	--	<50	<0.5	<0.5	<0.5	<0.5	<2.5	--
01/12/98	265.30	246.97	18.33	--	--	--	--	<50	<0.5	<0.5	<0.5	<0.5	<2.5	--
04/21/98	265.30	248.62	16.68	--	--	--	--	<50	<0.5	<0.5	<0.5	<0.5	<2.5	--
07/08/98	265.30	246.76	18.54	--	--	--	--	<50	<0.5	0.58	<0.5	<0.5	<2.5	--
10/13/98	265.30	245.02	20.28	--	--	--	--	<50	<0.5	<0.5	<0.5	<0.5	<2.5	--

CONTINUED ON NEXT PAGE

Cumulative Table of Well Data and Analytical Results

Vertical Measurements are in feet.

Volumetric Measurements are in gallons.

Analytical results are in parts per billion (ppb)

DATE	Vertical Measurements are in feet.			Volumetric Measurements are in gallons.				Analytical results are in parts per billion (ppb)						
	Well Head Elev.	Ground Water Elev.	Depth To Water	SPH Thickness	SPH Remove	Total SPH Removed	Notes	TPH- Gasoline	Benzene	Toluene	Ethyl- Benzene	Xylene	MTBE	Organic Lead
C-11 (CONT'D)														
01/27/99	265.30	245.85	19.45	--	--	--	--	<50	<0.5	<0.5	<0.5	<0.5	<2.0	--
04/27/99	265.30	246.90	18.40	--	--	--	--	<50	<0.5	<0.5	<0.5	<0.5	<5.0	--
07/23/99	265.30	246.05	19.25	--	--	--	--	<50	<0.5	<0.5	<0.5	<0.5	<5.0	--
11/01/99	265.30	247.47	17.83	--	--	--	--	<50	<0.5	<0.5	<0.5	<0.5	<2.5	--

Cumulative Table of Well Data and Analytical Results

Vertical Measurements are in feet.

Volumetric Measurements are in gallons.

Analytical results are in parts per billion (ppb)

DATE	Well	Ground	Depth	Total			Notes	TPH- Gasoline	Benzene	Toluene	Ethyl- Benzene	Xylene	MTBE	Organic Lead
	Head Elev.	Water Elev.	To Water	SPH Thickness	SPH Remove	SPH Removed								
C-12														
03/07/90	269.66	254.74	14.92	--	--	--	--	--	--	--	--	--	--	--
03/09/90	269.66	--	--	--	--	--	1400	230	140	33	180	--	--	--
06/12/90	269.66	254.87	14.79	--	--	--	720	190	71	18	73	--	--	--
09/24/90	269.66	253.94	15.72	--	--	--	ND	1.1	ND	ND	0.6	--	--	--
12/20/90	269.66	254.40	15.26	--	--	--	810	210	26	8.2	23	--	--	--
03/27/91	269.66	257.55	12.11	--	--	--	2900	350	220	52	210	--	--	--
06/18/91	269.66	253.28	16.38	--	--	--	--	--	--	--	--	--	--	--
09/12/91	269.66	252.11	17.55	--	--	--	350	59	12	4.5	8.5	--	--	--
01/23/92	269.66	252.55	17.11	--	--	--	450	110	31	7.9	22	--	--	--
04/13/92	269.66	255.26	14.40	--	--	--	5000	1100	76	100	200	--	--	--
08/03/92	269.66	253.83	15.83	--	--	--	520	200	21	13	25	--	ND	--
10/22/92	269.66	253.52	16.14	--	--	--	1300	310	66	35	56	--	--	--
01/18/93	269.66	257.96	11.70	--	--	--	5600	1200	430	220	610	--	--	--
04/19/93	269.66	256.61	13.05	--	--	--	2000	600	99	96	170	--	--	--
07/21-22/93	269.66	256.82	12.84	--	--	--	540	95	36	18	56	--	--	--
10/25/93	269.66	255.63	14.03	--	--	--	350	90	29	20	50	--	--	--
01/21/94	269.66	255.51	14.15	--	--	--	450	73	18	14	37	--	--	--
04/18/94	269.66	256.71	12.95	--	--	--	370	70	21	12	39	--	--	--
07/06-07/94	269.66	257.35	12.31	--	--	--	840	200	35	28	66	--	--	--
10/07/94	269.66	256.31	13.35	--	--	--	830	85	29	17	63	--	--	--
01/11/95	269.66	258.43	11.23	--	--	--	2100	570	190	98	390	--	--	--
04/24/95	269.66	259.34	10.32	--	--	--	820	120	28	23	61	--	--	--
07/31/95	269.66	256.92	12.74	--	--	--	520	79	13	16	42	--	--	--
10/02/95	269.66	255.26	14.40	--	--	--	400	50	5.3	11	29	--	--	--
01/16/96	269.66	256.94	12.72	--	--	--	1900	490	32	60	120	<25	--	--
04/18/96	269.66	258.91	10.75	--	--	--	2900	640	54	100	190	68	--	--
07/22/96	269.66	256.46	13.20	--	--	--	730	150	13	26	75	9.5	--	--
10/10/96	269.66	255.95	13.71	--	--	--	270	58	4.4	7.7	31	<2.5	--	--
01/09/97	269.66	260.60	9.06	--	--	--	2900	550	67	94	300	63	--	--
04/15/97	269.66	258.13	11.53	--	--	--	2500	350	29	92	200	43	--	--
07/08/97	269.66	257.92	11.74	--	--	--	1400	190	17	54	120	21	--	--
10/22/97	269.66	258.78	10.88	--	--	--	2300	490	45	110	340	42	--	--
01/12/98	269.66	260.76	8.90	--	--	--	5000	840	89	220	610	<50	--	--
04/21/98	269.66	262.41	7.25	--	--	--	2400	410	39	79	270	130	--	--
07/08/98	269.66	258.95	10.71	--	--	--	<50	7.6	<0.5	2.0	2.9	<2.5	--	--
10/13/98	269.66	257.01	12.65	--	--	--	2600	460	34	120	240	11	--	--

CONTINUED ON NEXT PAGE

Cumulative Table of Well Data and Analytical Results

Vertical Measurements are in feet.

Volumetric Measurements are in gallons.

Analytical results are in parts per billion (ppb)

DATE	Vertical Measurements are in feet.			Volumetric Measurements are in gallons.				Analytical results are in parts per billion (ppb)						
	Well Head Elev.	Ground Water Elev.	Depth To Water	SPH Thickness	SPH Remove	Total SPH Removed	Notes	TPH- Gasoline	Benzene	Toluene	Ethyl- Benzene	Xylene	MTBE	Organic Lead
C-12 (CONT'D)														
01/27/99	269.66	257.41	12.25	--	--	--	--	96.9	6.88	<0.5	<0.5	<0.5	<2.0	--
04/27/99	269.66	259.46	10.20	--	--	--	--	2720	614	31.6	128	300	<50	--
07/23/99	269.66	258.27	11.39	--	--	--	--	1230	220	9.96	44.8	93.6	<20	--
11/01/99	269.66	257.13	12.53	--	--	--	--	70.7	10.7	1.02	<0.5	1.61	5.55	--

Cumulative Table of Well Data and Analytical Results

Vertical Measurements are in feet.

Volumetric Measurements are in gallons.

Analytical results are in parts per billion (ppb)

DATE	Well	Ground	Depth	Total			Notes	Analytical results are in parts per billion (ppb)						
	Head Elev.	Water Elev.	To Water	SPH Thickness	SPH Remove	SPH Removed		TPH-Gasoline	Benzene	Toluene	Ethyl-Benzene	Xylene	MTBE	Organic Lead
C-13														
03/07/90	284.32	273.14	11.18	--	--	--	--	--	--	--	--	--	--	--
03/09/90	284.32	--	--	--	--	--	--	ND	15	3.7	1.0	6.2	--	--
06/12/90	284.32	273.62	10.70	--	--	--	--	ND	2.6	ND	ND	ND	--	--
09/24/90	284.32	272.72	11.60	--	--	--	--	ND	2.4	ND	ND	ND	--	--
12/20/90	284.32	274.16	10.16	--	--	--	--	ND	1.6	ND	ND	ND	--	--
03/27/91	284.32	276.68	7.64	--	--	--	--	--	--	--	--	--	--	--
06/18/91	284.32	273.00	11.32	--	--	--	--	--	--	--	--	--	--	--
09/12/91	284.32	272.48	11.84	--	--	--	--	ND	ND	ND	ND	ND	--	--
01/23/92	284.32	273.77	10.55	--	--	--	--	--	--	--	--	--	--	--
04/13/92	284.32	273.36	10.96	--	--	--	--	ND	1.0	ND	ND	ND	--	--
08/03/92	284.32	273.42	10.90	--	--	--	--	ND	ND	ND	ND	ND	--	ND
10/22/92	284.32	273.14	11.18	--	--	--	--	--	--	--	--	--	--	--
01/18/93	284.32	276.92	7.40	--	--	--	--	290	54	10	5.4	12	--	--
04/19/93	284.32	275.39	8.93	--	--	--	--	--	--	--	--	--	--	--
07/21-22/93	284.32	273.57	10.75	--	--	--	--	ND	ND	ND	ND	ND	--	--
10/25/93	284.32	273.47	10.85	--	--	--	--	--	--	--	--	--	--	--
01/21/94	284.32	273.27	11.05	--	--	--	--	ND	ND	ND	ND	ND	--	--
04/18/94	284.32	273.61	10.71	--	--	--	--	--	--	--	--	--	--	--
07/06-07/94	284.32	273.67	10.65	--	--	--	--	ND	0.5	ND	ND	ND	--	--
10/07/94	284.32	273.24	11.08	--	--	--	--	--	--	--	--	--	--	--
01/11/95	284.32	278.94	5.38	--	--	--	Sampled bi-annually	120	15	<0.5	3.1	2.7	--	--
04/24/95	284.32	276.54	7.78	--	--	--	--	--	--	--	--	--	--	--
07/31/95	284.32	274.38	9.94	--	--	--	--	<50	<0.5	<0.5	<0.5	<0.5	--	--
10/02/95	284.32	273.74	10.58	--	--	--	--	--	--	--	--	--	--	--
01/16/96	284.32	274.52	9.80	--	--	--	--	<50	<0.5	<0.5	<0.5	<0.5	<2.5	--
04/18/96	284.32	276.57	7.75	--	--	--	--	--	--	--	--	--	--	--
07/22/96	284.32	274.82	9.50	--	--	--	--	59	18	<0.5	1.0	<0.5	<2.5	--
10/10/96	284.32	273.63	10.69	--	--	--	--	--	--	--	--	--	--	--
01/09/97	284.32	276.95	7.37	--	--	--	--	<50	0.6	<0.5	<0.5	<0.5	<2.5	--
04/15/97	284.32	275.63	8.69	--	--	--	--	--	--	--	--	--	--	--
07/08/97	284.32	276.12	8.20	--	--	--	Samples lost	--	--	--	--	--	--	--
07/15/97	284.32	276.02	8.30	--	--	--	--	<50	2.6	<0.5	<0.5	1.6	<2.5	--
10/22/97	284.32	276.79	7.53	--	--	--	--	--	--	--	--	--	--	--

CONTINUED ON NEXT PAGE

Cumulative Table of Well Data and Analytical Results

Vertical Measurements are in feet.

Volumetric Measurements are in gallons.

Analytical results are in parts per billion (ppb)

DATE	Well	Ground	Depth	Total			Notes	Analytical results are in parts per billion (ppb)						
	Head Elev.	Water Elev.	To Water	SPH Thickness	SPH Remove	SPH Removed		TPH-Gasoline	Benzene	Toluene	Ethyl-Benzene	Xylene	MTBE	Organic Lead
C-13 (CONT'D)														
01/12/98	284.32	278.38	5.94	--	--	--	--	<50	<0.5	<0.5	<0.5	<0.5	<2.5	--
04/21/98	284.32	277.35	6.97	--	--	--	--	--	--	--	--	--	--	--
07/08/98	284.32	274.45	9.87	--	--	--	--	<50	<0.5	<0.5	<0.5	<0.5	<2.5	--
10/13/98	284.32	273.51	10.81	--	--	--	--	--	--	--	--	--	--	--
01/27/99	284.32	273.06	11.26	--	--	--	--	<50	<0.5	<0.5	<0.5	<0.5	<2.0	--
04/27/99	284.32	275.42	8.90	--	--	--	--	--	--	--	--	--	--	--
07/23/99	284.32	275.00	9.32	--	--	--	--	158	14.9	<0.5	0.69	0.928	<5.0	--
11/01/99	284.32	272.83	11.49	--	--	--	--	--	--	--	--	--	--	--

Cumulative Table of Well Data and Analytical Results

Vertical Measurements are in feet.

Volumetric Measurements are in gallons.

Analytical results are in parts per billion (ppb)

DATE	Well Head Elev.	Ground Water Elev.	Depth To Water	Total			Notes	Analytical results are in parts per billion (ppb)						
				SPH Thickness	SPH Remove	SPH Removed		TPH-Gasoline	Benzene	Toluene	Ethyl-Benzene	Xylene	MTBE	Organic Lead
C-14														
03/07/90	270.74	255.56	15.18	--	--	--	--	--	--	--	--	--	--	--
03/09/90	270.74	--	--	--	--	--	--	ND	ND	ND	ND	ND	--	--
06/12/90	270.74	257.32	13.42	--	--	--	--	ND	ND	ND	ND	ND	--	--
09/24/90	270.74	257.90	12.84	--	--	--	--	ND	ND	ND	ND	ND	--	--
12/20/90	270.74	254.02	16.72	--	--	--	--	ND	1.7	0.7	ND	0.7	--	--
03/27/91	270.74	262.74	8.00	--	--	--	--	ND	ND	ND	ND	1.3	--	--
06/18/91	270.74	255.53	15.21	--	--	--	--	--	--	--	--	--	--	--
09/12/91	270.74	255.13	15.61	--	--	--	--	ND	ND	ND	ND	ND	--	--
01/23/92	270.74	246.10	24.64	--	--	--	--	--	--	--	--	--	--	--
04/13/92	270.74	258.53	12.21	--	--	--	--	ND	ND	ND	ND	ND	--	--
08/03/92	270.74	256.10	14.64	--	--	--	--	ND	ND	ND	ND	ND	--	ND
10/22/92	270.74	253.80	16.94	--	--	--	--	--	--	--	--	--	--	--
01/18/93	270.74	265.64	5.10	--	--	--	--	ND	ND	ND	ND	ND	--	--
04/19/93	270.74	263.86	6.88	--	--	--	--	--	--	--	--	--	--	--
07/21-22/93	270.74	259.58	11.16	--	--	--	--	ND	ND	ND	ND	ND	--	--
10/25/93	270.74	256.87	13.87	--	--	--	--	--	--	--	--	--	--	--
01/21/94	270.74	255.42	15.32	--	--	--	--	ND	ND	ND	ND	ND	--	--
04/18/94	270.74	254.85	15.89	--	--	--	--	--	--	--	--	--	--	--
07/06-07/94	270.74	258.66	12.08	--	--	--	--	ND	ND	ND	ND	ND	--	--
10/07/94	270.74	255.45	15.29	--	--	--	--	--	--	--	--	--	--	--
01/11/95	270.74	266.94	3.80	--	--	--	Sampled bi-annually	<50	<0.5	<0.5	<0.5	<0.5	<0.5	--
04/24/95	270.74	265.68	5.06	--	--	--	--	--	--	--	--	--	--	--
07/31/95	270.74	260.34	10.40	--	--	--	--	<50	<0.5	<0.5	<0.5	<0.5	<0.5	--
10/02/95	270.74	257.20	13.54	--	--	--	--	--	--	--	--	--	--	--
01/16/96	270.74	259.62	11.12	--	--	--	--	<50	<0.5	<0.5	<0.5	<0.5	<2.5	--
04/18/96	270.74	265.78	4.96	--	--	--	--	--	--	--	--	--	--	--
07/22/96	270.74	259.89	10.85	--	--	--	--	<50	<0.5	<0.5	<0.5	<0.5	<2.5	--
10/10/96	270.74	261.44	9.30	--	--	--	--	--	--	--	--	--	--	--
01/09/97	270.74	269.80	0.94	--	--	--	--	56	3.8	4.2	1.1	5.0	<2.5	--
04/15/97	270.74	263.59	7.15	--	--	--	--	--	--	--	--	--	--	--
07/08/97	270.74	261.44	9.30	--	--	--	--	<50	<0.5	<0.5	<0.5	<0.5	<2.5	--
10/22/97	270.74	261.17	9.57	--	--	--	--	--	--	--	--	--	--	--
01/12/98	270.74	268.45	2.29	--	--	--	--	<50	<0.5	<0.5	<0.5	<0.5	<2.5	--
04/21/98	270.74	270.70	0.04	--	--	--	--	--	--	--	--	--	--	--
07/08/98	270.74	264.85	5.89	--	--	--	--	<50	<0.5	<0.5	<0.5	<0.5	<2.5	--
10/13/98	270.74	260.38	10.36	--	--	--	--	--	--	--	--	--	--	--

CONTINUED ON NEXT PAGE

Cumulative Table of Well Data and Analytical Results

Vertical Measurements are in feet.

Volumetric Measurements are in gallons.

Analytical results are in parts per billion (ppb)

DATE	Vertical Measurements are in feet.			Volumetric Measurements are in gallons.				Analytical results are in parts per billion (ppb)						
	Well Head Elev.	Ground Water Elev.	Depth To Water	SPH Thickness	SPH Remove	Total SPH Removed	Notes	TPH-Gasoline	Benzene	Toluene	Ethyl-Benzene	Xylene	MTBE	Organic Lead
C-14 (CONT'D)														
01/27/99	270.74	263.42	7.32	--	--	--	--	<50	<0.5	<0.5	<0.5	<0.5	<2.0	--
04/27/99	270.74	267.98	2.76	--	--	--	--	--	--	--	--	--	--	--
07/23/99	270.74	269.59	1.15	--	--	--	--	<50	<0.5	<0.5	<0.5	<0.5	<5.0	--
11/01/99	270.74	267.11	3.63	--	--	--	--	--	--	--	--	--	--	--

Cumulative Table of Well Data and Analytical Results

Vertical Measurements are in feet.

Volumetric Measurements are in gallons.

Analytical results are in parts per billion (ppb)

DATE	Well Head Elev.	Ground Water Elev.	Depth To Water	Volumetric Measurements			Notes	Analytical Results (ppb)						
				SPH Thickness	SPH Remove	Total SPH Removed		TPH-Gasoline	Benzene	Toluene	Ethyl-Benzene	Xylene	MTBE	Organic Lead
C-15														
03/07/90	246.15	235.05	11.10	--	--	--	--	--	--	--	--	--	--	--
03/09/90	246.15	--	--	--	--	--	--	410	ND	1.4	0.5	0.6	--	--
06/12/90	246.15	235.37	10.78	--	--	--	--	420	11	ND	ND	ND	--	--
09/24/90	246.15	235.22	10.93	--	--	--	--	430	ND	1.5	ND	ND	--	--
12/20/90	246.15	235.07	11.08	--	--	--	--	300	1.3	1.1	0.6	1.5	--	--
03/27/91	246.15	237.65	8.50	--	--	--	--	520	4.6	1.1	ND	1.0	--	--
06/18/91	246.15	235.32	10.83	--	--	--	--	290	ND	1.1	ND	ND	--	--
06/18/91	246.15	235.32	10.83	--	--	--	Duplicate	320	ND	1.3	ND	ND	--	--
09/12/91	246.15	235.10	11.05	--	--	--	--	330	ND	0.9	ND	ND	--	--
01/23/92	246.15	235.35	10.80	--	--	--	--	210	ND	0.6	ND	ND	--	--
01/23/92	246.15	235.35	10.80	--	--	--	Duplicate	190	1.2	0.8	ND	ND	--	--
04/13/92	246.15	236.57	9.58	--	--	--	--	430	1.8	ND	ND	ND	--	--
08/03/92	246.15	234.94	11.21	--	--	--	--	640	ND	2.1	0.7	1.3	--	ND
10/22/92	246.15	234.50	11.65	--	--	--	--	420	ND	ND	ND	0.8	--	--
01/18/93	246.15	239.03	7.12	--	--	--	--	640	7.0	3.0	2.9	6.7	--	--
04/19/93	246.15	237.22	8.93	--	--	--	--	260	6.0	2.0	0.7	ND	--	--
07/21-22/93	246.15	236.37	9.78	--	--	--	--	580	ND	8.0	ND	0.6	--	--
10/25/93	246.15	236.41	9.74	--	--	--	--	240	ND	12	ND	0.6	--	--
01/21/94	246.15	235.78	10.37	--	--	--	--	420	0.6	ND	0.6	ND	--	--
04/18/94	246.15	236.19	9.96	--	--	--	--	550	1.0	4.6	0.6	ND	--	--
07/06-07/94	246.15	235.92	10.23	--	--	--	--	660	0.7	ND	ND	0.7	--	--
10/07/94	246.15	235.47	10.68	--	--	--	--	440	13	0.8	ND	1.2	--	--
01/11/95	246.15	238.84	7.31	--	--	--	--	750	2.5	<0.5	<0.5	0.6	--	--
04/24/95	246.15	237.41	8.74	--	--	--	--	850	<0.5	<0.5	<0.5	<0.5	--	--
07/31/95	246.15	235.41	10.74	--	--	--	--	640	<0.5	1.6	<0.5	<0.5	--	--
10/02/95	246.15	234.83	11.32	--	--	--	--	560	<0.5	<0.5	<0.5	<0.5	--	--
01/16/96	246.15	235.58	10.57	--	--	--	--	740	<0.5	<0.5	<0.5	<0.5	<2.5	--
04/18/96	246.15	237.55	8.60	--	--	--	--	760	<0.5	<0.5	<0.5	<0.5	<2.5	--
07/22/96	246.15	235.57	10.58	--	--	--	--	690	<0.5	1.6	<0.5	<0.5	7.9	--
10/10/96	246.15	234.97	11.18	--	--	--	--	870	7.0	2.1	<0.5	<0.5	11	--
01/09/97	246.15	238.83	7.32	--	--	--	--	370	2.6	1.1	<0.5	<0.5	4.6	--
04/15/97	246.15	235.76	10.39	--	--	--	--	510	22	<0.5	<0.5	<0.5	<2.5	--
07/08/97	246.15	235.68	10.47	--	--	--	--	490	71	6.8	22	48	7.0	--
10/22/97	246.15	235.01	11.14	--	--	--	--	790	2.3	1.8	<0.5	<0.5	5.1	--

CONTINUED ON NEXT PAGE

Cumulative Table of Well Data and Analytical Results

Vertical Measurements are in feet.

Volumetric Measurements are in gallons.

Analytical results are in parts per billion (ppb)

DATE	Well Head Elev.	Ground Water Elev.	Depth To Water	Total			Notes	Analytical results are in parts per billion (ppb)						
				SPH Thickness	SPH Remove	SPH Removed		TPH-Gasoline	Benzene	Toluene	Ethyl-Benzene	Xylene	MTBE	Organic Lead
C-15 (CONT'D)														
01/12/98	246.15	238.17	7.98	--	--	--	--	400	13	<1.0	<1.0	<1.0	<5.0	--
04/21/98	246.15	238.05	8.10	--	--	--	--	770	<0.5	0.6	0.82	0.51	<2.5	--
07/08/98	246.15	235.65	10.50	--	--	--	--	540	13	<0.5	<0.5	<0.5	<2.5	--
10/13/98	246.15	234.95	11.20	--	--	--	--	<50	<0.5	<0.5	<0.5	0.54	<2.5	--
01/27/99	246.15	235.53	10.62	--	--	--	--	769	<0.5	1.88	0.675	<0.5	4.35	--
04/27/99	246.15	236.91	9.24	--	--	--	--	612	2.57	1.79	<0.5	<0.5	<5.0	--
07/23/99	246.15	235.11	11.04	--	--	--	--	626	13.6	<0.5	<0.5	<0.5	<5.0	--
11/01/99	246.15	235.25	10.90	--	--	--	--	739	21.9	4.54	1.45	1.28	17.3	--

Cumulative Table of Well Data and Analytical Results

Vertical Measurements are in feet.

Volumetric Measurements are in gallons.

Analytical results are in parts per billion (ppb)

DATE	Well Head Elev.	Ground Water Elev.	Depth To Water	SPH Thickness	SPH Remove	Total SPH Removed	Notes	TPH-Gasoline	Benzene	Toluene	Ethyl-Benzene	Xylene	MTBE	Organic Lead
C-16														
03/07/90	246.69	228.19	18.50	--	--	--	--	--	--	--	--	--	--	--
03/09/90	246.69	--	--	--	--	--	--	ND	ND	ND	ND	ND	--	--
06/12/90	246.69	235.27	11.42	--	--	--	--	ND	ND	ND	ND	ND	--	--
09/24/90	246.69	235.30	11.39	--	--	--	--	ND	ND	ND	ND	ND	--	--
12/20/90	246.69	235.12	11.57	--	--	--	--	ND	ND	ND	ND	0.7	--	--
03/27/91	246.69	237.93	8.76	--	--	--	--	ND	ND	ND	ND	1.3	--	--
03/27/91	246.69	237.93	8.76	--	--	--	Duplicate	ND	ND	ND	ND	1.2	--	--
06/18/91	246.69	235.51	11.18	--	--	--	--	ND	ND	ND	ND	ND	--	--
09/12/91	246.69	234.74	11.95	--	--	--	--	ND	ND	ND	ND	ND	--	--
01/23/92	246.69	234.28	12.41	--	--	--	--	ND	ND	ND	ND	ND	--	--
04/13/92	246.69	236.00	10.69	--	--	--	--	ND	ND	ND	ND	ND	--	--
08/03/92	246.69	234.49	12.20	--	--	--	--	ND	ND	ND	ND	ND	--	ND
10/22/92	246.69	234.09	12.60	--	--	--	--	ND	ND	ND	ND	ND	--	--
01/18/93	246.69	237.69	9.00	--	--	--	--	ND	ND	ND	ND	ND	--	--
04/19/93	246.69	236.80	9.89	--	--	--	--	ND	ND	ND	ND	ND	--	--
07/21-22/93	246.69	236.44	10.25	--	--	--	--	ND	ND	ND	ND	ND	--	--
10/25/93	246.69	235.73	10.96	--	--	--	--	ND	ND	ND	ND	ND	--	--
01/21/94	246.69	234.93	11.76	--	--	--	--	ND	ND	0.7	ND	1.0	--	--
04/18/94	246.69	235.47	11.22	--	--	--	--	ND	ND	ND	ND	ND	--	--
07/06-07/94	246.69	235.32	11.37	--	--	--	--	ND	ND	ND	ND	ND	--	--
10/07/94	246.69	234.30	12.39	--	--	--	--	ND	ND	ND	ND	ND	--	--
01/11/95	246.69	237.73	8.96	--	--	--	--	<50	<0.5	<0.5	<0.5	<0.5	--	--
04/24/95	246.69	236.31	10.38	--	--	--	--	<50	<0.5	<0.5	<0.5	<0.5	--	--
07/31/95	246.69	235.37	11.32	--	--	--	--	<50	<0.5	<0.5	<0.5	<0.5	--	--
10/02/95	246.69	234.29	12.40	--	--	--	--	<50	<0.5	<0.5	<0.5	<0.5	--	--
01/16/96	246.69	235.15	11.54	--	--	--	--	<50	<0.5	<0.5	<0.5	<0.5	<2.5	--
04/18/96	246.69	236.09	10.60	--	--	--	--	<50	<0.5	<0.5	<0.5	<0.5	<2.5	--
07/22/96	246.69	235.12	11.57	--	--	--	--	<50	<0.5	<0.5	<0.5	<0.5	<2.5	--
10/10/96	246.69	234.25	12.44	--	--	--	--	<50	<0.5	<0.5	<0.5	<0.5	<2.5	--
01/09/97	246.69	237.16	9.53	--	--	--	--	<50	<0.5	<0.5	<0.5	<0.5	<2.5	--
04/15/97	246.69	234.66	12.03	--	--	--	--	<50	<0.5	<0.5	<0.5	<0.5	<2.5	--
07/08/97	246.69	234.51	12.18	--	--	--	--	<50	<0.5	<0.5	<0.5	<0.5	<2.5	--
10/22/97	246.69	233.94	12.75	--	--	--	--	<50	<0.5	<0.5	<0.5	<0.5	<2.5	--

CONTINUED ON NEXT PAGE

Cumulative Table of Well Data and Analytical Results

Vertical Measurements are in feet.

Volumetric Measurements are in gallons.

Analytical results are in parts per billion (ppb)

DATE	Well	Ground	Depth	Total			Notes	TPH- Gasoline	Benzene	Toluene	Ethyl- Benzene	Xylene	MTBE	Organic Lead
	Head Elev.	Water Elev.	To Water	SPH Thickness	SPH Remove	SPH Removed								
C-16 (CONT'D)														
01/12/98	246.69	236.34	10.35	--	--	--	--	<50	<0.5	<0.5	<0.5	<0.5	<2.5	--
04/21/98	246.69	236.06	10.63	--	--	--	--	<50	<0.5	<0.5	<0.5	<0.5	<2.5	--
07/08/98	246.69	234.62	12.07	--	--	--	--	<50	<0.5	0.51	<0.5	<0.5	<2.5	--
10/13/98	246.69	233.94	12.75	--	--	--	--	<50	<0.5	<0.5	<0.5	<0.5	<2.5	--
01/27/99	246.69	234.58	12.11	--	--	--	--	<50	<0.5	<0.5	<0.5	<0.5	<2.0	--
04/27/99	246.69	235.56	11.13	--	--	--	--	<50	<0.5	<0.5	<0.5	<0.5	<5.0	--
07/23/99	246.69	234.35	12.34	--	--	--	--	<50	<0.5	<0.5	<0.5	<0.5	<5.0	--
11/01/99	246.69	233.57	13.12	--	--	--	--	<50	<0.5	<0.5	<0.5	<0.5	<2.5	--

Cumulative Table of Well Data and Analytical Results

Vertical Measurements are in feet.

Volumetric Measurements are in gallons.

Analytical results are in parts per billion (ppb)

DATE	Well	Ground	Depth	Total			Notes	Analytical results are in parts per billion (ppb)								
	Head Elev.	Water Elev.	To Water	SPH Thickness	SPH Remove	SPH Removed		TPH-Gasoline	Benzene	Toluene	Ethyl-Benzene	Xylene	MTBE	Organic Lead		
RW																
12/04/89	--	--	--	--	--	--	--	62,000	29,000	1700	1800	8800	--	--		
03/07/90	274.52	256.02	18.50	--	--	--	--	--	--	--	--	--	--	--		
06/12/90	274.52	256.03	18.49	--	--	--	--	31,000	15,000	2000	560	3100	--	--		
09/24/90	274.52	--	--	--	--	--	--	--	--	--	--	--	--	--		
12/20/90	274.52	--	--	--	--	--	--	ND	0.5	ND	ND	1.2	--	--		
03/27/91	274.52	--	--	--	--	--	--	--	--	--	--	--	--	--		
06/18/91	274.52	--	--	--	--	--	--	--	--	--	--	--	--	--		
09/12/91	274.52	--	--	--	--	--	Insufficient water	--	--	--	--	--	--	--		
01/23/92	274.52	--	--	--	--	--	Insufficient water	--	--	--	--	--	--	--		
04/13/92	274.52	--	--	--	--	--	Insufficient water	--	--	--	--	--	--	--		
08/03/92	274.52	--	--	--	--	--	Insufficient water	--	--	--	--	--	--	--		
10/22/92	274.52	--	--	--	--	--	Insufficient water	--	--	--	--	--	--	--		
01/18/93	274.52	--	--	--	--	--	Insufficient water	--	--	--	--	--	--	--		
04/19/93	274.52	--	--	--	--	--	Insufficient water	--	--	--	--	--	--	--		
07/21-22/93	274.52	--	--	--	--	--	Insufficient water	--	--	--	--	--	--	--		
10/25/93	274.52	--	--	--	--	--	--	--	--	--	--	--	--	--		
01/21/94	274.52	--	--	--	--	--	--	--	--	--	--	--	--	--		
04/18/94	274.52	--	--	--	--	--	--	--	--	--	--	--	--	--		
07/06-07/94	274.52	--	--	--	--	--	--	--	--	--	--	--	--	--		
10/07/94	274.52	--	--	--	--	--	--	--	--	--	--	--	--	--		
10/24/95	274.52	256.63	17.89	--	--	--	--	37,000	11,000	380	1100	3000	--	--		
01/16/96	274.52	259.09	15.43	--	--	--	--	59,000	17,000	660	1600	5400	1000	--		

NO LONGER MONITORED OR SAMPLED

Cumulative Table of Well Data and Analytical Results

Vertical Measurements are in feet.

Volumetric Measurements are in gallons.

Analytical results are in parts per billion (ppb)

DATE	Well	Ground	Depth	Total			Notes	Analytical results are in parts per billion (ppb)						
	Head Elev.	Water Elev.	To Water	SPH Thickness	SPH Remove	SPH Removed		TPH- Gasoline	Benzene	Toluene	Ethyl- Benzene	Xylene	MTBE	Organic Lead
TRIP BLANK														
01/11/95	--	--	--	--	--	--	--	<50	<0.5	<0.5	<0.5	<0.5	--	--
04/24/95	--	--	--	--	--	--	--	<50	<0.5	<0.5	<0.5	<0.5	--	--
07/31/95	--	--	--	--	--	--	--	<50	<0.5	<0.5	<0.5	<0.5	--	--
10/02/95	--	--	--	--	--	--	--	<50	<0.5	<0.5	<0.5	<0.5	--	--
01/16/96	--	--	--	--	--	--	--	<50	<0.5	<0.5	<0.5	<0.5	--	--
04/18/96	--	--	--	--	--	--	--	<50	<0.5	<0.5	<0.5	<0.5	--	--
07/22/96	--	--	--	--	--	--	--	<50	<0.5	<0.5	<0.5	<0.5	--	--
10/10/96	--	--	--	--	--	--	--	<50	<0.5	<0.5	<0.5	<0.5	--	--
01/09/97	--	--	--	--	--	--	--	<50	<0.5	<0.5	<0.5	<0.5	<2.5	--
04/15/97	--	--	--	--	--	--	--	<50	<0.5	<0.5	<0.5	<0.5	<2.5	--
07/08/97	--	--	--	--	--	--	--	<50	<0.5	<0.5	<0.5	<0.5	<2.5	--
07/15/97	--	--	--	--	--	--	--	<50	<0.5	<0.5	<0.5	<0.5	<2.5	--
10/22/97	--	--	--	--	--	--	--	<50	<0.5	<0.5	<0.5	<0.5	<2.5	--
01/12/98	--	--	--	--	--	--	--	<50	<0.5	<0.5	<0.5	<0.5	<2.5	--
04/21/98	--	--	--	--	--	--	--	<50	<0.5	<0.5	<0.5	<0.5	<2.5	--
07/08/98	--	--	--	--	--	--	--	<50	<0.5	<0.5	<0.5	<0.5	<2.5	--
10/13/98	--	--	--	--	--	--	--	<50	<0.5	<0.5	<0.5	<0.5	<2.5	--
01/27/99	--	--	--	--	--	--	--	<50	<0.5	<0.5	<0.5	<0.5	<2.0	--
04/27/99	--	--	--	--	--	--	--	<50	<0.5	<0.5	<0.5	<0.5	<5.0	--
07/23/99	--	--	--	--	--	--	--	<50	<0.5	<0.5	<0.5	<0.5	<5.0	--
11/01/99	--	--	--	--	--	--	--	<50	<0.5	<0.5	<0.5	<0.5	<2.5	--

Cumulative Table of Well Data and Analytical Results

ADDITIONAL ANALYSES

Analytical values are in parts per billion (ppb)

DATE	Notes	Ethanol	t- Butanol	MTBE	DIPE	ETBE	TAME
C-1							
10/13/98	--	10,000	<2000	<40	<40	<40	<40

Note: Blaine Tech Services, Inc. began routine monitoring of the groundwater wells at this site on November 1, 1994.
 Earlier field data and analytical results are drawn from the November 4, 1994 Groundwater Technology, Inc. report.

ABBREVIATIONS:

TPH = Total Petroleum Hydrocarbons

ND = Not detected at or above the minimum quantitation limit. See laboratory reports for minimum quantitation limits.

MTBE = Methyl t-butyl ether

DIPE = Di-Isopropyl Ether

ETBE = Ethyl t-Butyl Ether

TAME = t-Amyl Methyl Ether

Analytical Appendix



November 17, 1999

Scott Boor
Blaine Tech Services (Chev)
1680 Rogers Avenue
San Jose, CA 95112

RE: Chevron 9-5607/M911052

Dear Scott Boor

Enclosed are the results of analyses for sample(s) received by the laboratory on November 2, 1999. If you have any questions concerning this report, please feel free to contact me.

Sincerely,

Wendy Bonnes
Project Manager

CA ELAP Certificate Number 1210





Blaine Tech Services (Chev)
1680 Rogers Avenue
San Jose, CA 95112

Project: Chevron 9-5607 (Crow Canyon Rd., Castro Valley)
Project Number: 991101 F1
Project Manager: Scott Boor

Sampled: 11/1/99
Received: 11/2/99
Reported: 11/17/99

ANALYTICAL REPORT FOR M911052

Sample Description	Laboratory Sample Number	Sample Matrix	Date Sampled
C-1	M911052-01	Water	11/1/99
C-3	M911052-02	Water	11/1/99
C-6	M911052-03	Water	11/1/99
C-8	M911052-04	Water	11/1/99
C-9	M911052-05	Water	11/1/99
C-10A	M911052-06	Water	11/1/99
C-10B	M911052-07	Water	11/1/99
C-11	M911052-08	Water	11/1/99
C-12	M911052-09	Water	11/1/99
C-15	M911052-10	Water	11/1/99
C-16	M911052-11	Water	11/1/99
TB	M911052-12	Water	11/1/99





Blaine Tech Services (Chev) 1680 Rogers Avenue San Jose, CA 95112	Project: Chevron 9-5607 (Crow Canyon Rd., Castro Valley) Project Number: 991101 F1 Project Manager: Scott Boor	Sampled: 11/1/99 Received: 11/2/99 Reported: 11/17/99
---	--	---

**Total Purgeable Hydrocarbons (C6-C12), BTEX and MTBE by DHS LUFT
Sequoia Analytical - Morgan Hill**

Analyte	Batch Number	Date Prepared	Date Analyzed	Surrogate Limits	Reporting Limit	Result	Units	Notes*
C-1				M911052-01		Water		
Purgeable Hydrocarbons	9110376	11/11/99	11/11/99		10000	45700	ug/l	1,D
Benzene	"	"	"		100	4020	"	D
Toluene	"	"	"		100	1280	"	D
Ethylbenzene	"	"	"		100	2690	"	D
Xylenes (total)	"	"	"		100	8140	"	D
Methyl tert-butyl ether	"	"	11/10/99		50.0	1250	"	2,D
Surrogate: a,a,a-Trifluorotoluene	"	"	11/11/99	70.0-130		116	%	
C-3				M911052-02		Water		
Purgeable Hydrocarbons	9110376	11/11/99	11/11/99		20000	138000	ug/l	1,D
Benzene	"	"	"		200	23900	"	D
Toluene	"	"	"		200	14700	"	D
Ethylbenzene	"	"	"		200	3970	"	D
Xylenes (total)	"	"	"		200	18400	"	D
Methyl tert-butyl ether	"	"	11/10/99		250	1180	"	2,D
Surrogate: a,a,a-Trifluorotoluene	"	"	11/11/99	70.0-130		140	%	3
C-6				M911052-03		Water		
Purgeable Hydrocarbons	9110376	11/11/99	11/11/99		10000	23700	ug/l	1,D
Benzene	"	"	"		100	7250	"	D
Toluene	"	"	"		100	335	"	D
Ethylbenzene	"	"	"		100	775	"	D
Xylenes (total)	"	"	"		100	882	"	D
Methyl tert-butyl ether	"	"	11/10/99		25.0	161	"	2,D
Surrogate: a,a,a-Trifluorotoluene	"	"	11/11/99	70.0-130		120	%	
C-8				M911052-04		Water		
Purgeable Hydrocarbons	9110334	11/10/99	11/10/99		50.0	ND	ug/l	
Benzene	"	"	"		0.500	ND	"	
Toluene	"	"	"		0.500	ND	"	
Ethylbenzene	"	"	"		0.500	ND	"	
Xylenes (total)	"	"	"		0.500	ND	"	
Methyl tert-butyl ether	"	"	"		2.50	ND	"	
Surrogate: a,a,a-Trifluorotoluene	"	"	"	70.0-130		107	%	
C-9				M911052-05		Water		
Purgeable Hydrocarbons	9110376	11/11/99	11/11/99		5000	10100	ug/l	1,D
Benzene	"	"	"		50.0	2050	"	D
Toluene	"	"	"		50.0	227	"	D
Ethylbenzene	"	"	"		50.0	628	"	D
Xylenes (total)	"	"	"		50.0	830	"	D





Blaine Tech Services (Chev)
1680 Rogers Avenue
San Jose, CA 95112

Project: Chevron 9-5607 (Crow Canyon Rd., Castro Valley)
Project Number: 991101 F1
Project Manager: Scott Boor

Sampled: 11/1/99
Received: 11/2/99
Reported: 11/17/99

**Total Purgeable Hydrocarbons (C6-C12), BTEX and MTBE by DHS LUFT
Sequoia Analytical - Morgan Hill**

Analyte	Batch Number	Date Prepared	Date Analyzed	Surrogate Limits	Reporting Limit	Result	Units	Notes*
C-9 (continued)				M911052-05			Water	
Methyl tert-butyl ether	9110376	11/11/99	11/11/99		250	933	ug/l	D
Surrogate: a,a,a-Trifluorotoluene	"	"	"	70.0-130		117	%	
C-10A				M911052-06			Water	
Purgeable Hydrocarbons	9110334	11/10/99	11/10/99		50.0	ND	ug/l	
Benzene	"	"	"		0.500	ND	"	
Toluene	"	"	"		0.500	ND	"	
Ethylbenzene	"	"	"		0.500	ND	"	
Xylenes (total)	"	"	"		0.500	ND	"	
Methyl tert-butyl ether	"	"	"		2.50	ND	"	
Surrogate: a,a,a-Trifluorotoluene	"	"	"	70.0-130		111	%	
C-10B				M911052-07			Water	
Purgeable Hydrocarbons	9110333	11/10/99	11/10/99		50.0	ND	ug/l	
Benzene	"	"	"		0.500	ND	"	
Toluene	"	"	"		0.500	ND	"	
Ethylbenzene	"	"	"		0.500	ND	"	
Xylenes (total)	"	"	"		0.500	ND	"	
Methyl tert-butyl ether	"	"	"		2.50	ND	"	
Surrogate: a,a,a-Trifluorotoluene	"	"	"	70.0-130		99.0	%	
C-11				M911052-08			Water	
Purgeable Hydrocarbons	9110332	11/10/99	11/10/99		50.0	ND	ug/l	
Benzene	"	"	"		0.500	ND	"	
Toluene	"	"	"		0.500	ND	"	
Ethylbenzene	"	"	"		0.500	ND	"	
Xylenes (total)	"	"	"		0.500	ND	"	
Methyl tert-butyl ether	"	"	"		2.50	ND	"	
Surrogate: a,a,a-Trifluorotoluene	"	"	"	70.0-130		89.9	%	
C-12				M911052-09			Water	
Purgeable Hydrocarbons	9110332	11/10/99	11/10/99		50.0	70.7	ug/l	1
Benzene	"	"	"		0.500	10.7	"	
Toluene	"	"	"		0.500	1.02	"	
Ethylbenzene	"	"	"		0.500	ND	"	
Xylenes (total)	"	"	"		0.500	1.61	"	
Methyl tert-butyl ether	"	"	"		2.50	5.55	"	
Surrogate: a,a,a-Trifluorotoluene	"	"	"	70.0-130		108	%	
C-15				M911052-10			Water	
Purgeable Hydrocarbons	9110332	11/10/99	11/10/99		50.0	739	ug/l	1





Blaine Tech Services (Chev) 1680 Rogers Avenue San Jose, CA 95112	Project: Chevron 9-5607 (Crow Canyon Rd., Castro Valley) Project Number: 991101 F1 Project Manager: Scott Boor	Sampled: 11/1/99 Received: 11/2/99 Reported: 11/17/99
---	--	---

**Total Purgeable Hydrocarbons (C6-C12), BTEX and MTBE by DHS LUFT
Sequoia Analytical - Morgan Hill**

Analyte	Batch Number	Date Prepared	Date Analyzed	Surrogate Limits	Reporting Limit	Result	Units	Notes*
C-15 (continued)				<u>M911052-10</u>			<u>Water</u>	
Benzene	9110332	11/10/99	11/10/99		0.500	21.9	ug/l	
Toluene	"	"	"		0.500	4.54	"	
Ethylbenzene	"	"	"		0.500	1.45	"	
Xylenes (total)	"	"	"		0.500	1.28	"	
Methyl tert-butyl ether	"	"	"		2.50	17.3	"	
Surrogate: a,a,a-Trifluorotoluene	"	"	"	70.0-130		300	%	3
C-16				<u>M911052-11</u>			<u>Water</u>	
Purgeable Hydrocarbons	9110374	11/11/99	11/11/99		50.0	ND	ug/l	
Benzene	"	"	"		0.500	ND	"	
Toluene	"	"	"		0.500	ND	"	
Ethylbenzene	"	"	"		0.500	ND	"	
Xylenes (total)	"	"	"		0.500	ND	"	
Methyl tert-butyl ether	"	"	"		2.50	ND	"	
Surrogate: a,a,a-Trifluorotoluene	"	"	"	70.0-130		113	%	
TB				<u>M911052-12</u>			<u>Water</u>	
Purgeable Hydrocarbons	9110374	11/11/99	11/11/99		50.0	ND	ug/l	
Benzene	"	"	"		0.500	ND	"	
Toluene	"	"	"		0.500	ND	"	
Ethylbenzene	"	"	"		0.500	ND	"	
Xylenes (total)	"	"	"		0.500	ND	"	
Methyl tert-butyl ether	"	"	"		2.50	ND	"	
Surrogate: a,a,a-Trifluorotoluene	"	"	"	70.0-130		109	%	





Blaine Tech Services (Chev) 1680 Rogers Avenue San Jose, CA 95112	Project: Chevron 9-5607 (Crow Canyon Rd., Castro Valley) Project Number: 991101 F1 Project Manager: Scott Boor	Sampled: 11/1/99 Received: 11/2/99 Reported: 11/17/99
---	--	---

**Total Purgeable Hydrocarbons (C6-C12), BTEX and MTBE by DHS LUFT/Quality Control
Sequoia Analytical - Morgan Hill**

Analyte	Date Analyzed	Spike Level	Sample Result	QC Result	Units	Reporting Limit Recov. Limits	Recov. %	RPD Limit	RPD %	Notes*
Batch: 9110332			Date Prepared: 11/10/99			Extraction Method: EPA 5030B (P/T)				
Blank			9110332-BLK1							
Purgeable Hydrocarbons	11/10/99			ND	ug/l	50.0				
Benzene	"			ND	"	0.500				
Toluene	"			ND	"	0.500				
Ethylbenzene	"			ND	"	0.500				
Xylenes (total)	"			ND	"	0.500				
Methyl tert-butyl ether	"			ND	"	2.50				
Surrogate: a,a,a-Trifluorotoluene	"	10.0		10.2	"	70.0-130	102			
LCS			9110332-BS1							
Purgeable Hydrocarbons	11/10/99	250		228	ug/l	70.0-130	91.2			
Surrogate: a,a,a-Trifluorotoluene	"	10.0		11.7	"	70.0-130	117			
Matrix Spike			9110332-MS1		M911312-02					
Purgeable Hydrocarbons	11/10/99	250	ND	224	ug/l	60.0-140	89.6			
Surrogate: a,a,a-Trifluorotoluene	"	10.0		11.7	"	70.0-130	117			
Matrix Spike Dup			9110332-MSD1		M911312-02					
Purgeable Hydrocarbons	11/10/99	250	ND	225	ug/l	60.0-140	90.0	25.0	0.445	
Surrogate: a,a,a-Trifluorotoluene	"	10.0		12.1	"	70.0-130	121			
Batch: 9110333			Date Prepared: 11/10/99			Extraction Method: EPA 5030B (P/T)				
Blank			9110333-BLK1							
Purgeable Hydrocarbons	11/10/99			ND	ug/l	50.0				
Benzene	"			ND	"	0.500				
Toluene	"			ND	"	0.500				
Ethylbenzene	"			ND	"	0.500				
Xylenes (total)	"			ND	"	0.500				
Methyl tert-butyl ether	"			ND	"	2.50				
Surrogate: a,a,a-Trifluorotoluene	"	10.0		10.3	"	70.0-130	103			
LCS			9110333-BS1							
Purgeable Hydrocarbons	11/10/99	250		215	ug/l	70.0-130	86.0			
Surrogate: a,a,a-Trifluorotoluene	"	10.0		9.30	"	70.0-130	93.0			
LCS Dup			9110333-BSD1							
Purgeable Hydrocarbons	11/10/99	250		226	ug/l	70.0-130	90.4	25.0	4.99	
Surrogate: a,a,a-Trifluorotoluene	"	10.0		9.32	"	70.0-130	93.2			





Blaine Tech Services (Chev) 1680 Rogers Avenue San Jose, CA 95112	Project: Chevron 9-5607 (Crow Canyon Rd., Castro Valley) Project Number: 991101 F1 Project Manager: Scott Boor	Sampled: 11/1/99 Received: 11/2/99 Reported: 11/17/99
---	--	---

**Total Purgeable Hydrocarbons (C6-C12), BTEX and MTBE by DHS LUFT/Quality Control
Sequoia Analytical - Morgan Hill**

Analyte	Date Analyzed	Spike Level	Sample Result	QC Result	Reporting Limit Units	Recov. %	RPD Limit	RPD %	Notes*
Batch: 9110334									
Blank									
Date Prepared: 11/10/99									
Extraction Method: EPA 5030B (P/T)									
9110334-BLK1									
Purgeable Hydrocarbons	11/10/99			ND	ug/l	50.0			
Benzene	"			ND	"	0.500			
Toluene	"			ND	"	0.500			
Ethylbenzene	"			ND	"	0.500			
Xylenes (total)	"			ND	"	0.500			
Methyl tert-butyl ether	"			ND	"	2.50			
Surrogate: a,a,a-Trifluorotoluene	"	10.0		9.69	"	70.0-130	96.9		
LCS									
9110334-BS1									
Purgeable Hydrocarbons	11/10/99	250		267	ug/l	70.0-130	107		
Surrogate: a,a,a-Trifluorotoluene	"	10.0		13.4	"	70.0-130	134		3
Matrix Spike									
9110334-MS1 M911047-01									
Purgeable Hydrocarbons	11/10/99	250	ND	330	ug/l	60.0-140	132		
Surrogate: a,a,a-Trifluorotoluene	"	10.0		11.9	"	70.0-130	119		
Matrix Spike Dup									
9110334-MSD1 M911047-01									
Purgeable Hydrocarbons	11/10/99	250	ND	274	ug/l	60.0-140	110	25.0	18.2
Surrogate: a,a,a-Trifluorotoluene	"	10.0		10.6	"	70.0-130	106		
Batch: 9110374									
Blank									
Date Prepared: 11/11/99									
Extraction Method: EPA 5030B (P/T)									
9110374-BLK1									
Purgeable Hydrocarbons	11/11/99			ND	ug/l	50.0			
Benzene	"			ND	"	0.500			
Toluene	"			ND	"	0.500			
Ethylbenzene	"			ND	"	0.500			
Xylenes (total)	"			ND	"	0.500			
Methyl tert-butyl ether	"			ND	"	2.50			
Surrogate: a,a,a-Trifluorotoluene	"	10.0		11.7	"	70.0-130	117		
LCS									
9110374-BS1									
Benzene	11/11/99	10.0		9.06	ug/l	70.0-130	90.6		
Toluene	"	10.0		9.00	"	70.0-130	90.0		
Ethylbenzene	"	10.0		8.82	"	70.0-130	88.2		
Xylenes (total)	"	30.0		27.7	"	70.0-130	92.3		
Surrogate: a,a,a-Trifluorotoluene	"	10.0		11.0	"	70.0-130	110		
Matrix Spike									
9110374-MS1 M911052-11									
Benzene	11/11/99	10.0	ND	9.19	ug/l	60.0-140	91.9		
Toluene	"	10.0	ND	9.23	"	60.0-140	92.3		





Blaine Tech Services (Chev) 1680 Rogers Avenue San Jose, CA 95112	Project: Chevron 9-5607 (Crow Canyon Rd., Castro Valley) Project Number: 991101 F1 Project Manager: Scott Boor	Sampled: 11/1/99 Received: 11/2/99 Reported: 11/17/99
---	--	---

**Total Purgeable Hydrocarbons (C6-C12), BTEX and MTBE by DHS LUFT/Quality Control
Sequoia Analytical - Morgan Hill**

Analyte	Date Analyzed	Spike Level	Sample Result	QC Result	Units	Reporting Limit Recov. Limits	Recov. %	RPD Limit	RPD %	Notes*
Matrix Spike (continued)										
	9110374-MS1	M911052-11								
Ethylbenzene	11/11/99	10.0	ND	9.26	ug/l	60.0-140	92.6			
Xylenes (total)	"	30.0	ND	28.3	"	60.0-140	94.3			
Surrogate: a,a,a-Trifluorotoluene	"	10.0		11.2	"	70.0-130	112			
Matrix Spike Dup										
	9110374-MSD1	M911052-11								
Benzene	11/11/99	10.0	ND	9.60	ug/l	60.0-140	96.0	25.0	4.36	
Toluene	"	10.0	ND	9.67	"	60.0-140	96.7	25.0	4.66	
Ethylbenzene	"	10.0	ND	9.68	"	60.0-140	96.8	25.0	4.44	
Xylenes (total)	"	30.0	ND	29.6	"	60.0-140	98.7	25.0	4.56	
Surrogate: a,a,a-Trifluorotoluene	"	10.0		10.7	"	70.0-130	107			
Batch: 9110376										
Blank										
Purgeable Hydrocarbons	Date Prepared: 11/11/99			Extraction Method: EPA 5030B (P/T)						
	9110376-BLK1									
	11/11/99			ND	ug/l	50.0				
Benzene	"			ND	"	0.500				
Toluene	"			ND	"	0.500				
Ethylbenzene	"			ND	"	0.500				
Xylenes (total)	"			ND	"	0.500				
Methyl tert-butyl ether	"			ND	"	2.50				
Surrogate: a,a,a-Trifluorotoluene	"	10.0		9.55	"	70.0-130	95.5			
LCS										
	9110376-BS1									
Benzene	11/11/99	10.0		8.78	ug/l	70.0-130	87.8			
Toluene	"	10.0		8.59	"	70.0-130	85.9			
Ethylbenzene	"	10.0		9.34	"	70.0-130	93.4			
Xylenes (total)	"	30.0		27.8	"	70.0-130	92.7			
Surrogate: a,a,a-Trifluorotoluene	"	10.0		9.87	"	70.0-130	98.7			
Matrix Spike										
	9110376-MS1	M911250-11								
Benzene	11/12/99	10.0	ND	9.39	ug/l	60.0-140	93.9			
Toluene	"	10.0	ND	9.47	"	60.0-140	94.7			
Ethylbenzene	"	10.0	ND	10.0	"	60.0-140	100			
Xylenes (total)	"	30.0	ND	29.7	"	60.0-140	99.0			
Surrogate: a,a,a-Trifluorotoluene	"	10.0		8.78	"	70.0-130	87.8			
Matrix Spike Dup										
	9110376-MSD1	M911250-11								
Benzene	11/12/99	10.0	ND	8.92	ug/l	60.0-140	89.2	25.0	5.13	
Toluene	"	10.0	ND	9.04	"	60.0-140	90.4	25.0	4.65	
Ethylbenzene	"	10.0	ND	9.32	"	60.0-140	93.2	25.0	7.04	
Xylenes (total)	"	30.0	ND	28.1	"	60.0-140	93.7	25.0	5.50	
Surrogate: a,a,a-Trifluorotoluene	"	10.0		9.11	"	70.0-130	91.1			





Blaine Tech Services (Chev) 1680 Rogers Avenue San Jose, CA 95112	Project: Chevron 9-5607 (Crow Canyon Rd., Castro Valley) Project Number: 991101 F1 Project Manager: Scott Boor	Sampled: 11/1/99 Received: 11/2/99 Reported: 11/17/99
---	--	---

Notes and Definitions

#	Note
---	------

- D Data reported from a dilution.
- 1 Chromatogram Pattern: Gasoline C6-C12
- 2 Sample was analyzed at a second dilution per clients request.
- 3 The surrogate recovery for this sample cannot be accurately quantified due to interference from coeluting organic compounds present in the sample.
- DET Analyte DETECTED
- ND Analyte NOT DETECTED at or above the reporting limit
- NR Not Reported
- dry Sample results reported on a dry weight basis
- Recov. Recovery
- RPD Relative Percent Difference



Fax copy of Lab Report and COC to Chevron Contact:

Yes
 No

Chain-of-Custody-Record

Chevron Products Co. P.O. BOX 6004 San Ramon, CA 94583 FAX (925)842-8370	Chevron Facility Number <u>9-5607</u>	Chevron Contact Name) <u>Brett Hunter</u>
	Facility Address <u>5269 Crow Canyon Rd., Castro Valley</u>	(Phone) <u>(925) 842-8695</u>
	Consultant Project Number <u>991101 FI</u>	Laboratory Name <u>Sequoia</u>
	Consultant Name <u>Blaine Tech Services, Inc.</u>	Laboratory Service Order <u>9144488</u>
	Address <u>1680 Rogers Ave., San Jose</u>	Laboratory Service Code <u>ZZ02800</u>
	Project Contact (Name) <u>Scott Boor</u>	Samples collected by (Name) <u>MIKE STEWART</u>
	(Phone) <u>408-573-0555</u> (Fax) <u>408-573-7771</u>	Signature <u>[Signature]</u>

Sample Number	Number of Containers	Matrix S = Soil W = Water C = Charcoal	Sample Preservation	Date/Time	State Method: <input type="checkbox"/> CA <input type="checkbox"/> OR <input type="checkbox"/> WA <input type="checkbox"/> NW Series <input type="checkbox"/> CO <input type="checkbox"/> UT													Remarks
					BTEX/MTBE + TPH GAS (8020 + 8015)	BTEX + TPH GAS (8020 + 8015)	TPH Diesel (8015)	Oxygenates (8260)	Purgeable Halocarbons (8010)	Purgeable Organics (8270)	Extractable Organics (8270)	Oil and Grease (5520)	Metals (ICAP or AA) Cd, Cr, Pb, Zn, Ni	BTEX (8020)	BTEX/MTBE/Naph. (8020)	TPH - HCID	TPH - D Extended	
✓ C-1	✓ 3	W		11-1-99/1128	X													1
✓ C-3	✓ 3	W		1325	X													2
✓ C-6	✓ 3	W		1224	X													3
✓ C-8	✓ 3	W		1028	X													4
✓ C-9	✓ 3	W		1200	X													5
✓ C-10A	✓ 3	W		949	X													6
✓ C-10B	✓ 3	W		930	X													7
✓ C-11	✓ 3	W		1007	X													8
✓ C-12	✓ 3	W		1113	X													9
✓ C-15	✓ 3	W		1050	X													10
✓ C-16	✓ 3	W		1255	X													11
✓ TB	✓ 2	W			X													12

11-11-05 2

COC-3-DWG07-9B/HCH

Relinquished By (Signature) <u>[Signature]</u>	Organization <u>BTS</u>	Date/Time	Received By (Signature) <u>[Signature]</u>	Organization	Date/Time <u>10/5/</u>	Iced Y/N	Turn Around Time (Circle One) 24 Hrs. 48 Hrs. 5 Days 10 Days As Contracted
Relinquished By (Signature) <u>[Signature]</u>	Organization	Date/Time	Received By (Signature) <u>[Signature]</u>	Organization	Date/Time <u>11-2</u>	Iced Y/N	
Relinquished By (Signature) <u>[Signature]</u>	Organization	Date/Time	Received For Laboratory By (Signature)		Date/Time <u>11-2 12:10</u>	Iced Y/N	

Field Data Sheets

CHEVRON WELL MONITORING DATA SHEET

Project #: 991101 F1	Station #: 9-5607
Sampler: MIKE S.	Date: 11-1-99
Well I.D.: C-1	Well Diameter: 2 3 (4) 6 8
Total Well Depth: 43.28	Depth to Water: 18.93 18.93
Depth to Free Product:	Thickness of Free Product (feet):
Referenced to: (PVC) Grade	D.O. Meter (if req'd): YSI HACH

Well Diameter	Multiplier	Well Diameter	Multiplier
2"	0.16	5"	1.02
3"	0.37	6"	1.47
4"	0.65	Other	radius ² * 0.163

Purge Method: Bailer Disposable Bailer Middleburg Electric Submersible Extraction Pump Other: _____

Sampling Method: Bailer Disposable Bailer Extraction Port Other: _____

<u>15.8</u>	x	<u>3</u>	=	<u>47.4</u>	Gals.
1 Case Volume (Gals.)		Specified Volumes		Calculated Volume	

Time	Temp (°F)	pH	Cond.	Gals. Removed	Observations
1121	70.6	6.7	1345	16	0007
1123	70.5	6.7	1340	32	↓
1125	70.1	6.7	1342	48	↓
					seen on samples

Did well dewater? Yes No Gallons actually evacuated: **48**

Sampling Time: **1128** Sampling Date: **11-1-99**

Sample I.D.: **C-1** Laboratory: **(Sequoia)** CORE N. Creek Assoc. Labs

Analyzed for: **(TPH-G)** **(BTEX)** **(MTBE)** TPH-D Other: _____

Duplicate I.D.: Analyzed for: TPH-G BTEX MTBE TPH-D Other: _____

D.O. (if req'd):	Pre-purge:	mg/L	Post-purge:	mg/L
O.R.P. (if req'd):	Pre-purge:	mV	Post-purge:	mV

CHEVRON WELL MONITORING DATA SHEET

Project #: <u>991101 FI</u>	Station #: <u>9-5607</u>
Sampler: <u>Mike S.</u>	Date: <u>11-1-99</u>
Well I.D.: <u>C-3</u>	Well Diameter: 2 3 <u>4</u> 6 8
Total Well Depth: <u>31.82</u>	Depth to Water: <u>21.03</u>
Depth to Free Product: <u>(No product detected)</u>	Thickness of Free Product (feet):
Referenced to: <u>PVC</u> Grade	D.O. Meter (if req'd): YSI HACH

Well Diameter	Multiplier	Well Diameter	Multiplier
2"	0.16	5"	1.02
3"	0.37	6"	1.47
4"	0.65	Other	radius ² * 0.163

Purge Method: Bailer Disposable Bailer Middleburg Electric Submersible Extraction Pump

Other: _____

Sampling Method: Bailer Disposable Bailer Extraction Port

Other: _____

<u>7.0</u>	x	<u>3</u>	=	<u>21.0</u>	Gals.
1 Case Volume (Gals.)		Specified Volumes		Calculated Volume	

Time	Temp (°F)	pH	Cond.	Gals. Removed	Observations
1318	69.0	6.6	1826	7	odor
1319	69.1	6.6	1840	14	↓
1320	69.0	6.6	1839	21	Heavy sheen on samples
		<u>(NO SPH'S Detected)</u>			

Did well dewater? Yes No Gallons actually evacuated: 21

Sampling Time: 1325 Sampling Date: 11-1-99

Sample I.D.: C-3 Laboratory: Sequoia CORE N. Creek Assoc. Labs

Analyzed for: TPH-G BTEX MTBE TPH-D Other: _____

Duplicate I.D.: _____ Analyzed for: TPH-G BTEX MTBE TPH-D Other: _____

D.O. (if req'd):	Pre-purge:	mg/L	Post-purge:	mg/L
	O.R.P. (if req'd):	Pre-purge:	mV	Post-purge:

CHEVRON WELL MONITORING DATA SHEET

Project #: <u>991101 F1</u>	Station #: <u>9-5607</u>
Sampler: <u>Mike S.</u>	Date: <u>11-1-99</u>
Well I.D.: <u>C-6</u>	Well Diameter: 2 3 <u>4</u> 6 8
Total Well Depth: <u>30.01</u>	Depth to Water: <u>13.27</u>
Depth to Free Product:	Thickness of Free Product (feet):
Referenced to: <u>PVC</u> Grade	D.O. Meter (if req'd): YSI HACH

Well Diameter	Multiplier	Well Diameter	Multiplier
2"	0.16	5"	1.02
3"	0.37	6"	1.47
4"	0.65	Other	radius ² * 0.163

Purge Method: Bailer
 Disposable Bailer
 Middleburg
 Electric Submersible
 Extraction Pump
 Other: _____

Sampling Method: Bailer
 Disposable Bailer
 Extraction Port
 Other: _____

<u>10.8</u>	x	<u>3</u>	=	<u>32.6</u>	Gals.
1 Case Volume (Gals.)		Specified Volumes		Calculated Volume	

Time	Temp (°F)	pH	Cond.	Gals. Removed	Observations
1217	67.1	6.8	1584	11	odor
1219	66.7	6.7	1583	22	
1221	66.5	6.7	1581	33	

Did well dewater? Yes No Gallons actually evacuated: 33

Sampling Time: 1224 Sampling Date: 11-1-99

Sample I.D.: C-6 Laboratory: Sequoia CORE N. Creek Assoc. Labs

Analyzed for: TPH-G BTEX MTBE TPH-D Other: _____

Duplicate I.D.: _____ Analyzed for: TPH-G BTEX MTBE TPH-D Other: _____

D.O. (if req'd):	Pre-purge:	mg/L	Post-purge:	mg/L
O.R.P. (if req'd):	Pre-purge:	mV	Post-purge:	mV

CHEVRON WELL MONITORING DATA SHEET

Project #: 991101 F1	Station #: 9-5607
Sampler: MIKE S.	Date: 11-1-99
Well I.D.: C-8	Well Diameter: (2) 3 4 6 8
Total Well Depth: 2500	Depth to Water: 6.10
Depth to Free Product:	Thickness of Free Product (feet):
Referenced to: PVC Grade	D.O. Meter (if req'd): YSI HACH

Well Diameter	Multiplier	Well Diameter	Multiplier
2"	0.16	5"	1.02
3"	0.37	6"	1.47
4"	0.65	Other	radius ² * 0.163

Purge Method: Bailer
 Disposable Bailer
 Middleburg
 Electric Submersible
 Extraction Pump

Sampling Method: Bailer
 Disposable Bailer
 Extraction Port
 Other: _____

Other: _____

3.0	x	3	=	9.0	Gals.
1 Case Volume (Gals.)		Specified Volumes		Calculated Volume	

Time	Temp (°F)	pH	Cond.	Gals. Removed	Observations
1020	71.0	7.1	849	3	
1023	71.1	7.0	845	6	
1026	71.1	7.0	845	9	

Did well dewater? Yes No Gallons actually evacuated: **9**

Sampling Time: **1028** Sampling Date: **11-1-99**

Sample I.D.: **C-8** Laboratory: **Sequoia** CORE N. Creek Assoc. Labs

Analyzed for: TPH-G BTEX MTBE TPH-D Other:

Duplicate I.D.: Analyzed for: TPH-G BTEX MTBE TPH-D Other:

D.O. (if req'd):	Pre-purge:	mg/L	Post-purge:	mg/L
------------------	------------	------	-------------	------

O.R.P. (if req'd):	Pre-purge:	mV	Post-purge:	mV
--------------------	------------	----	-------------	----

CHEVRON WELL MONITORING DATA SHEET

Project #: <u>991101E1</u>	Station #: <u>9-5607</u>
Sampler: <u>Mike S.</u>	Date: <u>11-1-99</u>
Well I.D.: <u>C-9</u>	Well Diameter: 2 3 4 6 8 <u> </u>
Total Well Depth: <u>28.35</u>	Depth to Water: <u>11.44</u>
Depth to Free Product:	Thickness of Free Product (feet):
Referenced to: <u>PVO</u> Grade	D.O. Meter (if req'd): YSI HACH

Well Diameter	Multiplier	Well Diameter	Multiplier
2"	0.16	5"	1.02
3"	0.37	6"	1.47
4"	0.65	Other	radius ² * 0.163

Purge Method: Bailer Disposable Bailer Middleburg Electric Submersible Extraction Pump

Other: _____

Sampling Method: Bailer Disposable Bailer Extraction Port

Other: _____

<u>10.9</u>	x	<u>3</u>	=	<u>32.7</u>	Gals.
1 Case Volume (Gals.)		Specified Volumes		Calculated Volume	

Time	Temp (°F)	pH	Cond.	Gals. Removed	Observations
1150	68.9	7.1	1529	11	ODOR
1152	68.5	7.0	1563	22	ODOR
1154	68.0	7.0	1561	33	ODOR
* "Removed pump to purge and sample"					

Did well dewater? Yes No Gallons actually evacuated: 33

Sampling Time: 1200 Sampling Date: 11-1-99

Sample I.D.: C-9 Laboratory: Sequoia CORE N. Creek Assoc. Labs

Analyzed for: TPH-G BTEX MIBE TPH-D Other:

Duplicate I.D.: Analyzed for: TPH-G BTEX MIBE TPH-D Other:

D.O. (if req'd):	Pre-purge:	mg/L	Post-purge:	mg/L
	O.R.P. (if req'd):	mV	Post-purge:	mV

CHEVRON WELL MONITORING DATA SHEET

Project #: 991101 F1	Station #: 9-5607
Sampler: Mike S.	Date: 11-1-99
Well I.D.: C-10A	Well Diameter: 2 (3) 4 6 8
Total Well Depth: 22.74	Depth to Water: 18.09
Depth to Free Product:	Thickness of Free Product (feet):
Referenced to: (PVC) Grade	D.O. Meter (if req'd): YSI HACH

Well Diameter	Multiplier	Well Diameter	Multiplier
2"	0.16	5"	1.02
3"	0.37	6"	1.47
4"	0.65	Other	radius ² * 0.163

Purge Method: Bailer
 Disposable Bailer
 Middleburg
 Electric Submersible
 Extraction Pump
 Other: _____

Sampling Method: Bailer
 Disposable Bailer
 Extraction Port
 Other: _____

<u>1.7</u>	x	<u>3</u>	=	<u>5.1</u>	Gals.
1 Case Volume (Gals.)		Specified Volumes		Calculated Volume	

Time	Temp (°F)	pH	Cond.	Gals. Removed	Observations
941	67.9	7.3	1057	2	
943	68.1	7.3	1051	4	
945	68.0	7.3	1053	6	

Did well dewater? Yes No Gallons actually evacuated: **6**

Sampling Time: **949** Sampling Date: **11-1-99**

Sample I.D.: **C-10A** Laboratory: **(Sequia) CORE N. Creek Assoc. Labs**

Analyzed for: ~~TPH-G~~ ~~BTEX~~ **(MTBE)** TPH-D Other: _____

Duplicate I.D.: _____ Analyzed for: TPH-G BTEX MTBE TPH-D Other: _____

D.O. (if req'd):	Pre-purge:	mg/L	Post-purge:	mg/L
O.R.P. (if req'd):	Pre-purge:	mV	Post-purge:	mV

CHEVRON WELL MONITORING DATA SHEET

Project #: <u>991101FI</u>	Station #: <u>9-5607</u>
Sampler: <u>Mike S.</u>	Date: 11-1-99 <u>11-1-99</u>
Well I.D.: <u>C-10B</u>	Well Diameter: 2 <u>(3)</u> 4 6 8 <u> </u>
Total Well Depth: <u>34.40</u>	Depth to Water: <u>17.69</u>
Depth to Free Product:	Thickness of Free Product (feet):
Referenced to: <u>PVC</u> Grade	D.O. Meter (if req'd): YSI HACH

Well Diameter	Multiplier	Well Diameter	Multiplier
2"	0.16	5"	1.02
3"	0.37	6"	1.47
4"	0.65	Other	radius ² * 0.163

Purge Method: Bailer
 Disposable Bailer
 Middleburg
 Electric Submersible
 Extraction Pump
 Other: _____

Sampling Method: Bailer
 Disposable Bailer
 Extraction Port
 Other: _____

<u>6.1</u>	X	<u>3</u>	=	<u>18.5</u>	Gals.
I Case Volume (Gals.)		Specified Volumes		Calculated Volume	

Time	Temp (°F)	pH	Cond.	Gals. Removed	Observations
<u>920</u>	<u>67.1</u>	<u>7.4</u>	<u>927</u>	<u>7</u>	
<u>921</u>	<u>67.0</u>	<u>7.4</u>	<u>917</u>	<u>14</u>	
<u>922</u>	<u>67.1</u>	<u>7.3</u>	<u>909</u>	<u>19</u>	

Did well dewater? Yes (No) Gallons actually evacuated: 19

Sampling Time: 930 Sampling Date: 11-1-99

Sample I.D.: C-10B Laboratory: Séquoia CORE N. Creek Assoc. Labs

Analyzed for: TPH-G BTEX MTBE TPH-D Other: _____

Duplicate I.D.: Analyzed for: TPH-G BTEX MTBE TPH-D Other: _____

D.O. (if req'd):	Pre-purge:	mg/L	Post-purge:	mg/L
	O.R.P. (if req'd):	mV	Post-purge:	mV

CHEVRON WELL MONITORING DATA SHEET

Project #: 991101 F1	Station #: 9-5607
Sampler: Mike S.	Date: 11-1-99
Well I.D.: C-11	Well Diameter: 2 (3) 4 6 8
Total Well Depth: 33.50	Depth to Water: 33.50 17.83
Depth to Free Product:	Thickness of Free Product (feet):
Referenced to: (PVC) Grade	D.O. Meter (if req'd): YSI HACH

Well Diameter	Multiplier	Well Diameter	Multiplier
2"	0.16	5"	1.02
3"	0.37	6"	1.47
4"	0.65	Other	radius ² * 0.163

Purge Method: Bailer Disposable Bailer Middleburg Electric Submersible Extraction Pump Other: _____

Sampling Method: Bailer Disposable Bailer Extraction Port Other: _____

<u>5.7</u>	x	<u>3</u>	=	<u>17.3</u>	Gals.
1 Case Volume (Gals.)		Specified Volumes		Calculated Volume	

Time	Temp (°F)	pH	Cond.	Gals. Removed	Observations
1000	69.3	7.0	1571	6	
1001	69.3	7.1	1575	12	
1002	69.1	7.0	1579	18	

Did well dewater? Yes **(No)** Gallons actually evacuated: **18**

Sampling Time: **1007** Sampling Date: **11-1-99**

Sample I.D.: **C-11** Laboratory: **(Sequoia)** CORE N. Creek Assoc. Labs

Analyzed for: **(TPH-G)** ~~BTEX~~ ~~MTBE~~ TPH-D Other:

Duplicate I.D.: Analyzed for: TPH-G BTEX MTBE TPH-D Other:

D.O. (if req'd):	Pre-purge:	mg/L	Post-purge:	mg/L
O.R.P. (if req'd):	Pre-purge:	mV	Post-purge:	mV

CHEVRON WELL MONITORING DATA SHEET

Project #: <u>991101 E1</u>	Station #: <u>9-5607</u>
Sampler: <u>Mike S.</u>	Date: <u>11-1-99</u>
Well I.D.: <u>C-12</u>	Well Diameter: 2 3 4 6 8 <u> </u>
Total Well Depth: <u>29.51</u>	Depth to Water: <u>17.53</u>
Depth to Free Product:	Thickness of Free Product (feet):
Referenced to: <u>PVC</u> Grade	D.O. Meter (if req'd): YSI HACH

Well Diameter	Multiplier	Well Diameter	Multiplier
2"	0.16	5"	1.02
3"	0.37	6"	1.47
4"	0.65	Other	radius ² * 0.163

Purge Method: Bailer
 Disposable Bailer
 Middleburg
 Electric Submersible Extraction Pump
 Other: _____

Sampling Method: Bailer
 Disposable Bailer
 Extraction Port
 Other: _____

<u>6.2</u>	X	<u>3</u>	=	<u>18.8</u>	Gals.
1 Case Volume (Gals.)		Specified Volumes		Calculated Volume	

Time	Temp (°F)	pH	Cond.	Gals. Removed	Observations
1107	69.9	6.7	687	7	odor
1108	69.5	6.7	683	14	↓
1109	69.3	6.7	683	19	

Did well dewater? Yes No Gallons actually evacuated: 19

Sampling Time: 1113 Sampling Date: 11-1-99

Sample I.D.: C-12 Laboratory: Sequoia CORE N. Creek Assoc. Labs

Analyzed for: TPH-G BTEX MTBE TPH-D Other: _____

Duplicate I.D.: _____ Analyzed for: TPH-G BTEX MTBE TPH-D Other: _____

D.O. (if req'd):	Pre-purge:	mg/L	Post-purge:	mg/L
	O.R.P. (if req'd):	Pre-purge:	mV	Post-purge:

CHEVRON WELL MONITORING DATA SHEET

Project #: <u>991101 F1</u>	Station #: <u>9-S607</u>
Sampler: <u>Mike S.</u>	Date: 11-1-99 <u>11-1-99</u>
Well I.D.: <u>C-15</u>	Well Diameter: 2 <u>(3)</u> 4 6 8 <u> </u>
Total Well Depth: <u>19.45</u>	Depth to Water: <u>10.90</u>
Depth to Free Product:	Thickness of Free Product (feet):
Referenced to: <u>(PVC)</u> Grade	D.O. Meter (if req'd): YSI HACH

Well Diameter	Multiplier	Well Diameter	Multiplier
2"	0.16	5"	1.02
3"	0.37	6"	1.47
4"	0.65	Other	radius ² * 0.163

Purge Method: Bailer Sampling Method: Bailer

~~X~~ Disposable Bailer ~~X~~ Disposable Bailer

Middleburg Extraction Port

Electric Submersible Other: _____

Extraction Pump

Other: _____

<u>3.1</u>	x	<u>3</u>	=	<u>94</u>	Gals.
1 Case Volume (Gals.)		Specified Volumes		Calculated Volume	

Time	Temp (°F)	pH	Cond.	Gals. Removed	Observations
<u>1040</u>	<u>68.1</u>	<u>6.8</u>	<u>1659</u>	<u>4</u>	
<u>1043</u>	<u>68.0</u>	<u>6.7</u>	<u>1654</u>	<u>8</u>	
<u>1046</u>	<u>67.5</u>	<u>6.6</u>	<u>1654</u>	<u>10</u>	

Did well dewater? Yes (No) Gallons actually evacuated: 10

Sampling Time: 1050 Sampling Date: 11-1-99

Sample I.D.: C-15 Laboratory: (Sequoia) CORE N. Creek Assoc. Labs

Analyzed for: (TPH-G) (BTEX) (MTBE) TPH-D . Other:

Duplicate I.D.: Analyzed for: TPH-G BTEX MTBE TPH-D . Other:

D.O. (if req'd):	Pre-purge:	mg/L	Post-purge:	mg/L
O.R.P. (if req'd):	Pre-purge:	mV	Post-purge:	mV

CHEVRON WELL MONITORING DATA SHEET

Project #: <u>991001 FI</u>	Station #: <u>9-5607</u>
Sampler: <u>mikes</u>	Date: <u>11-1-99</u>
Well I.D.: <u>C-16</u>	Well Diameter: 2 <u>3</u> 4 6 8
Total Well Depth: <u>30.82</u>	Depth to Water: <u>13.12</u>
Depth to Free Product:	Thickness of Free Product (feet):
Referenced to: <u>PVO</u> Grade	D.O. Meter (if req'd): YSI HACH

Well Diameter	Multiplier	Well Diameter	Multiplier
2"	0.16	5"	1.02
3"	0.37	6"	1.47
4"	0.65	Other	radius ² * 0.163

Purge Method: Bailer Sampling Method: Bailer
 Disposable Bailer Disposable Bailer
 Middleburg Extraction Port
 Electric Submersible Other: _____
 Extraction Pump

<u>65</u>	X	<u>3</u>	=	<u>19.6</u>	Gals.
1 Case Volume (Gals.)		Specified Volumes		Calculated Volume	

Time	Temp (°F)	pH	Cond.	Gals. Removed	Observations
1248	70.1	7.2	1307	7	000R
1249	70.4	7.2	1309	14	
1251	70.3	7.1	1314	20	↓

Did well dewater? Yes No Gallons actually evacuated: 20

Sampling Time: 1255 Sampling Date: 11-1-99

Sample I.D.: C-16 Laboratory: Sequoia CORE N. Creek Assoc. Labs

Analyzed for: TPH-G BTEX MTBE TPH-D Other:

Duplicate I.D.: Analyzed for: TPH-G BTEX MTBE TPH-D Other:

D.O. (if req'd):	Pre-purge:	mg/L	Post-purge:	mg/L
O.R.P. (if req'd):	Pre-purge:	mV	Post-purge:	mV