

Chevron



Chevron

PROTECTION

99 APR -5 PM 4: 02

Chevron U.S.A. Products Company
6001 Bollinger Canyon Rd. Bldg. L
P. O. Box 6004
San Ramon, CA 94583-0804

**Site Assessment and
Remediation Group**
Phone (510) 842-9500
Fax (510) 842-8370

Date: April 1, 1999
To: Distribution
Re: Groundwater Monitoring Report

The enclosed groundwater monitoring report has been properly reviewed by a Chevron authorized representative. Agency guidelines have been followed. Blaine Tech Services is authorized to distribute the report directly to interested parties.

If you have any questions, please call me at (510) 842-8695.

Sincerely,

A handwritten signature in cursive script that reads "Brett L. Hunter".

Brett Hunter
Site Assessment and Remediation
Project Manager



1680 ROGERS AVENUE
SAN JOSE, CALIFORNIA 95112-1105
(408) 573-7771 FAX
(408) 573-0555 PHONE

April 1, 1999

Brett Hunter
Chevron U.S.A. Products Company
P.O. Box 6004
San Ramon, CA 94583-0904

1st Quarter 1999 Monitoring at 9-5607

First Quarter 1999 Groundwater Monitoring at
Chevron Service Station Number 9-5607
5269 Crow Canyon Road
Castro Valley, CA

Monitoring Performed on January 27, 1999

Groundwater Sampling Report 990127-P-1

This report covers the routine monitoring of groundwater wells at this Chevron facility. Blaine Tech Services, Inc.'s work at the site includes inspection, gauging, evacuation, purgewater containment, sample collection and sample handling in accordance with standard procedures that conform to Regional Water Quality Control Board requirements.

Routine field data collection includes depth to water, total well depth, thickness of any separate immiscible layer, water column volume, calculated volume of a three-case volume purge, elapsed evacuation time, total volume of water removed, and standard water parameter instrument readings. Sample material is collected, contained, stored, and transported to the laboratory in conformance with EPA standards. Purgewater is, likewise, collected and transported to McKittrick Waste Treatment Site for disposal.

Basic field information is presented alongside analytical values excerpted from the laboratory report in the cumulative table of **WELL DATA AND ANALYTICAL RESULTS**. The full analytical report for the most recent samples is located in the **Analytical Appendix**. The table also contains new groundwater elevation calculations taken from the computer plotted gradient

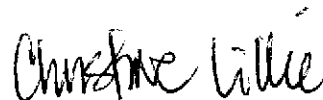
map which is located in the **Professional Engineering Appendix**.

At a minimum, Blaine Tech Services, Inc. field personnel are certified upon completion of a forty-hour Hazardous Materials and Emergency Response training course per 29 CFR 1910.120. Field personnel are also enrolled in annual eight hour refresher courses.

Blaine Tech Services, Inc. conducts sampling and documentation assignments of this type as an independent third party. In order to avoid compromising the objectivity necessary for the proper and disinterested performance of this work, Blaine Tech Services, Inc. concentrates on objective data collection and does not participate in the interpretation of analytical results, the definition of geological or hydrological conditions, the formulation of recommendations, or the marketing of remedial systems.

Please call if you have any questions.

Yours truly,



Christine Lillie
Project Coordinator

CAL/sb

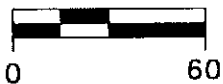
attachments: Professional Engineering Appendix
Cumulative Table of Well Data and Analytical Results
Analytical Appendix
Field Data Sheets

cc: Scott Seery, Alameda County Environmental Health
Kevin Hinckley
Diane Riggs, Forest Creek Townhomes Assoc.
Tim Utterback, Weiss Associates
Bette Owen, Chevron (w/o enclosure)

**Professional
Engineering –
Appendix**

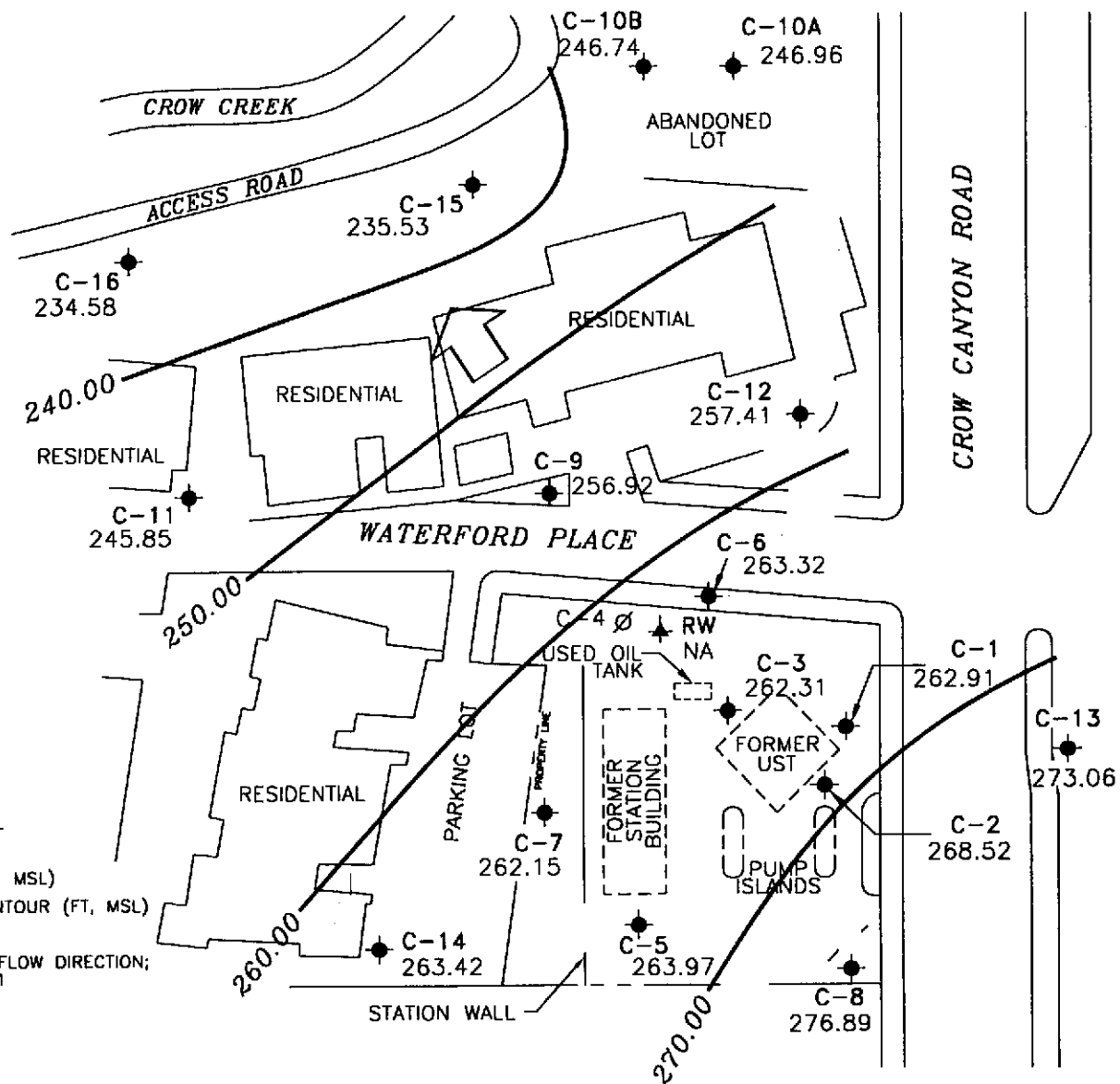


SCALE (ft)



EXPLANATION

- MONITORING WELL
- ABANDONED MONITORING WELL
- RECOVERY WELL
- 245.85 GROUNDWATER ELEVATION (FT, MSL)
- 260.00 GROUNDWATER ELEVATION CONTOUR (FT, MSL)
- NA DATA NOT AVAILABLE
- APPROXIMATE GROUNDWATER FLOW DIRECTION;
APPROXIMATE GRADIENT = 0.1



Basemap from Cambria Environmental Technology, Inc.

PREPARED BY



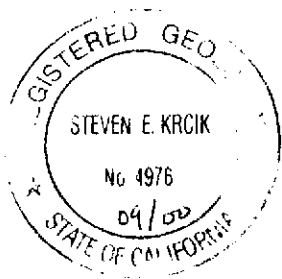
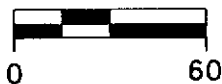
Chevron Station 9-5607
5269 Crow Canyon Road
Castro Valley, California

GROUNDWATER ELEVATION CONTOUR MAP,
JANUARY 27, 1999

FIGURE:
1
PROJECT:
DAC04



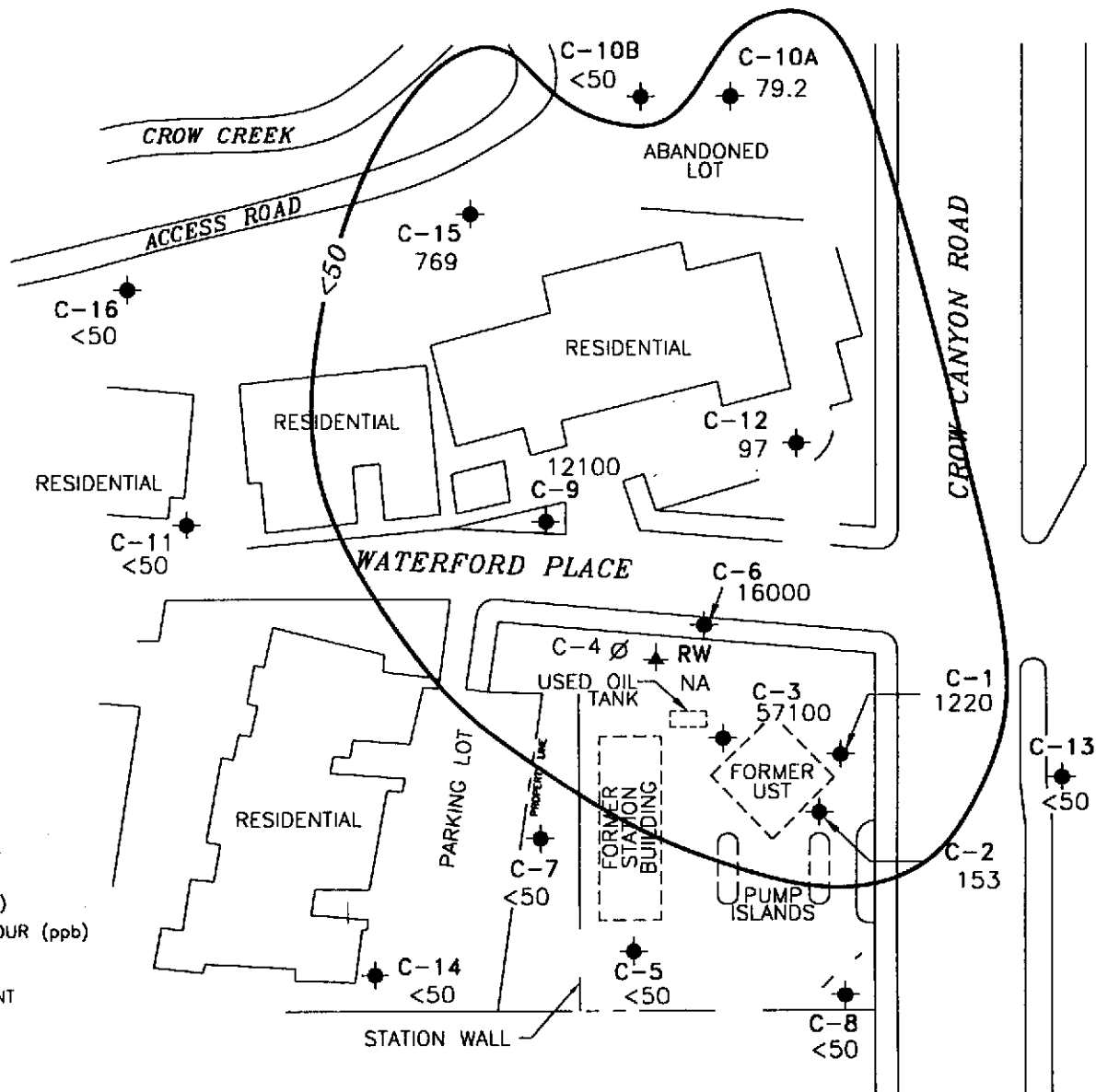
SCALE (ft)



EXPLANATION

- MONITORING WELL
- ABANDONED MONITORING WELL
- ★ RECOVERY WELL
- <50 TPH-g CONCENTRATIONS (ppb)
- <50 TPH-g CONCENTRATION CONTOUR (ppb)
- NA DATA NOT AVAILABLE

NOTE: CONTOURS BASED ON CURRENT AND HISTORIC DATA.



Basemap from Cambria Environmental Technology, Inc.

PREPARED BY



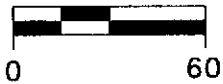
Chevron Station 9-5607
5269 Crow Canyon Road
Castro Valley, California

**TPH-GASOLINE CONCENTRATION IN
GROUNDWATER, JANUARY 27, 1999**

**FIGURE:
2
PROJECT:
DAC04**

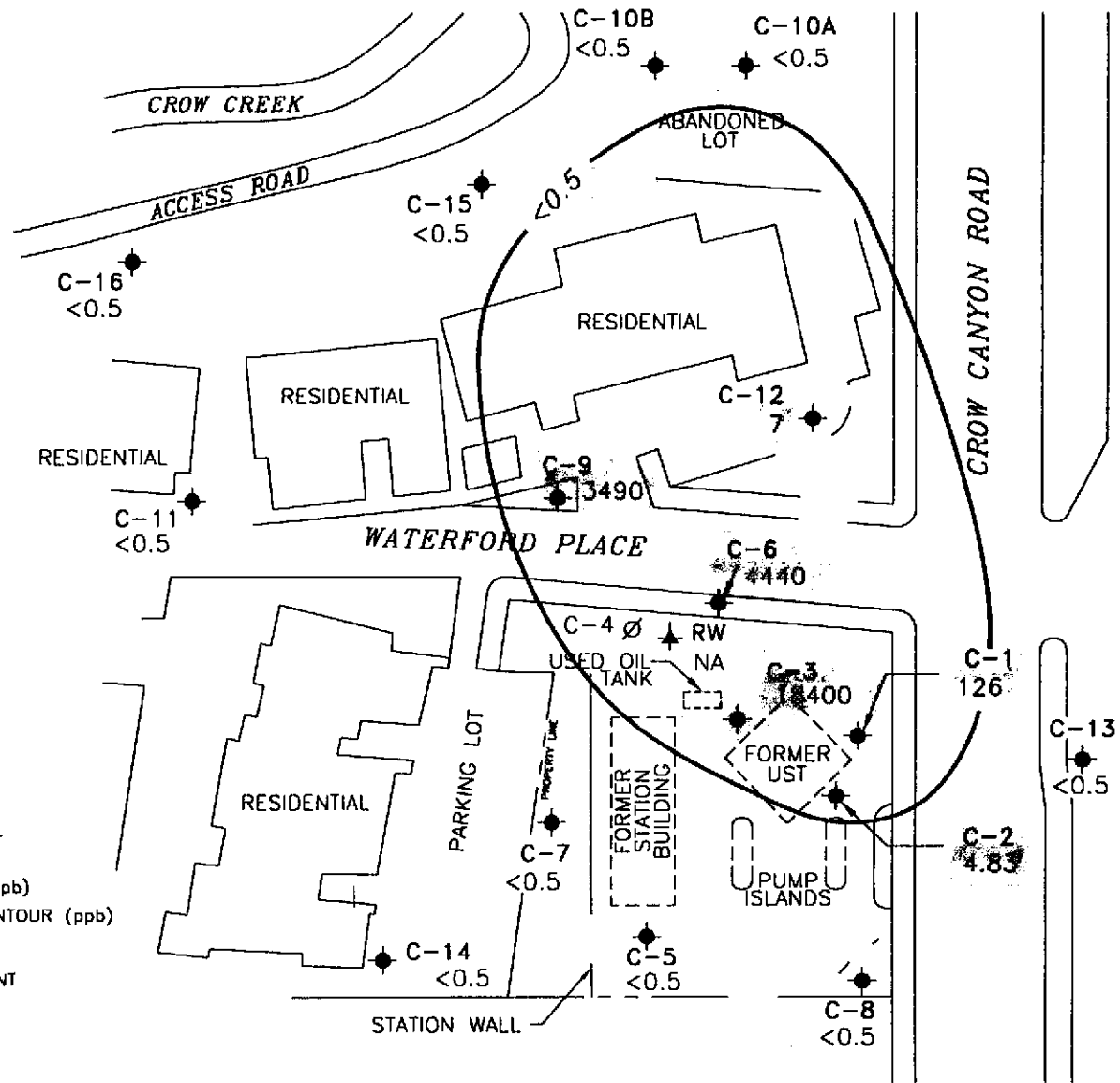


SCALE (ft)



EXPLANATION

- MONITORING WELL
 - ABANDONED MONITORING WELL
 - RECOVERY WELL
 - BENZENE CONCENTRATIONS (ppb)
 - BENZENE CONCENTRATION CONTOUR (ppb)
 - NA DATA NOT AVAILABLE
- NOTE: CONTOURS BASED ON CURRENT AND HISTORIC DATA.



Basemap from Cambrio Environmental Technology, Inc.

PREPARED BY



Chevron Station 9-5607
5269 Crow Canyon Road
Castro Valley, California

**BENZENE CONCENTRATION IN
GROUNDWATER, JANUARY 27, 1999**

**FIGURE:
3
PROJECT:
DAC04**

Table of Well Data and Analytical Results

Cumulative Table of Well Data and Analytical Results

Vertical Measurements are in feet.

Volumetric Measurements are in gallons.

Analytical results are in parts per billion (ppb)

DATE	Well Head Elev.	Ground Water Elev.	Depth To Water	SPH Thickness	Total		Notes	Analytical results are in parts per billion (ppb)						
					SPH Removed	SPH Removed		TPH-Gasoline	Benzene	Toluene	Ethyl-Benzene	Xylene	MTBE	Organic Lead
C-1														
03/26/85	283.46	260.63	22.83	--	--	--	--	--	--	--	--	--	--	--
07/03/86	283.46	259.88	23.58	--	--	--	--	--	--	--	--	--	--	--
03/26/87	283.46	262.96	20.50	--	--	--	--	--	--	--	--	--	--	--
03/28/88	283.46	257.46	26.00	--	--	--	--	--	--	--	--	--	--	--
03/10/89	283.46	267.60	15.86	--	--	--	--	--	--	--	--	--	--	--
04/03/89	283.46	266.61	16.85	--	--	--	--	--	--	--	--	--	--	--
05/08/89	283.46	260.78	22.68	--	--	--	--	--	--	--	--	--	--	--
06/05/89	283.46	258.80	24.66	--	--	--	--	--	--	--	--	--	--	--
07/12/90	283.46	257.90	25.56	--	--	--	--	--	--	--	--	--	--	--
08/10/90	283.46	257.57	25.89	--	--	--	--	--	--	--	--	--	--	--
09/13/89	283.46	256.91	26.55	--	--	--	--	22,000	3600	1100	1000	3500	--	--
10/04/89	283.46	258.22	25.24	--	--	--	--	--	--	--	--	--	--	--
11/03/89	283.46	258.43	25.03	--	--	--	--	--	--	--	--	--	--	--
12/04/89	283.46	257.09	26.37	--	--	--	--	13,000	2000	550	610	1600	--	--
03/07/90	283.46	260.98	22.48	--	--	--	--	--	--	--	--	--	--	--
03/09/90	283.46	--	--	--	--	--	--	--	--	--	--	--	--	--
06/12/90	283.46	259.11	24.35	--	--	--	--	21,000	3500	1400	840	4000	--	--
09/20/90	283.46	257.19	26.27	--	--	--	--	23,000	2100	1200	860	5000	--	--
12/20/90	283.46	260.87	22.59	--	--	--	--	8200	760	410	260	1100	--	--
03/27/91	283.46	264.38	19.08	--	--	--	--	--	--	--	--	--	--	--
06/18/91	283.46	256.35	27.11	--	--	--	--	--	--	--	--	--	--	--
09/12/91	283.46	255.24	28.22	--	--	--	--	--	--	--	--	--	--	--
01/23/92	283.46	256.81	26.65	--	--	--	--	--	--	--	--	--	--	--
04/13/92	283.46	261.30	22.16	--	--	--	--	38,000	3100	1300	850	3100	--	--
08/03/92	283.46	257.31	26.15	--	--	--	--	13,000	1300	470	550	1600	--	ND
10/22/92	283.46	256.67	26.79	--	--	--	--	24,000	3500	1400	1500	4300	--	--
01/18/93	283.46	264.86	18.60	--	--	--	--	370,000	6900	8900	3100	23,000	--	--
04/19/93	283.46	262.34	21.12	--	--	--	--	51,000	8000	7000	1400	10,000	--	--
07/21-22/93	283.46	260.18	23.28	--	--	--	--	22,000	3400	1000	990	3100	--	--
10/25/93	283.46	258.80	24.66	--	--	--	--	14,000	2000	550	790	2300	--	--
01/21/94	283.46	262.99	20.47	--	--	--	--	1100	350	6.0	3.0	15	--	--
04/18/94	283.46	260.36	23.10	--	--	--	--	24,000	3200	1000	1000	3100	--	--
07/06-07/94	283.46	260.56	22.90	--	--	--	--	65,000	6500	4200	1600	9300	--	--
10/07/94	283.46	258.75	24.71	--	--	--	--	27,000	5100	1200	1400	4300	--	--

CONTINUED ON NEXT PAGE

Cumulative Table of Well Data and Analytical Results

Vertical Measurements are in feet.

Analytical results are in parts per billion (ppb)

DATE	Well Head Elev.	Ground Water Elev.	Depth To Water	SPH Thickness	SPH Removed	Total SPH Removed	Notes	TPH-Gasoline	Benzene	Toluene	Ethyl-Benzene	Xylene	MTBE	Organic Lead
C-1 (CONT'D)														
01/11/95	283.46	265.16	18.30	--	--	--	--	29,000	1300	1200	930	4000	--	--
04/24/95	283.46	266.52	16.94	--	--	--	--	75,000	8900	5000	1700	8400	--	--
07/31/95	283.46	262.90	20.56	--	--	--	--	56,000	11,000	2600	2500	11,000	--	--
10/02/95	283.46	272.88	10.58	--	--	--	--	44,000	7900	1100	2100	6500	--	--
01/16/96	283.46	261.71	21.75	--	--	--	--	29,000	5300	460	1000	2800	<500	--
04/18/96	283.46	264.51	18.95	--	--	--	--	59,000	7100	3000	2000	7600	<250	--
07/22/96	283.46	262.46	21.00	--	--	--	--	26,000	6100	610	1800	4700	<250	--
10/10/96	283.46	261.46	22.00	--	--	--	--	24,000	7100	600	1700	3200	<250	--
01/09/97	283.46	268.05	15.41	--	--	--	--	32,000	4600	820	1500	4000	670	--
04/15/97	283.46	264.12	19.34	--	--	--	--	100,000	11,000	4500	3200	13,000	1700	--
04/15/97	283.46	264.12	19.34	--	--	--	Confirmation run	--	--	--	--	--	<200	--
07/08/97	283.46	263.68	19.78	--	--	--	--	42,000	5500	880	2000	4800	920	--
10/22/97	283.46	265.13	18.33	--	--	--	--	29,000	5200	970	1800	4200	740	--
01/12/98	283.46	271.81	11.65	--	--	--	--	31,000	2700	960	2100	5700	<1000	--
04/21/98	283.46	271.17	12.29	--	--	--	--	60,000	3300	2100	3100	10,000	1400	--
07/08/98	283.46	264.89	18.57	--	--	--	--	33,000	4400	1500	2800	8200	<250	--
10/13/98	283.46	262.11	21.35	--	--	--	*	27,000	3900	580	2000	4200	210	--
01/27/99	283.46	262.91	20.55	--	--	--	*	1220	126	21.9	1.6	163	10.3	--

* See Table of Additional Analyses

Cumulative Table of Well Data and Analytical Results

Vertical Measurements are in feet.

Analytical results are in parts per billion (ppb)

DATE	Well Head Elev.	Ground Water Elev.	Depth To Water	SPH Thickness	SPH Removed	Total SPH Removed	Notes	TPH- Gasoline	Benzene	Toluene	Ethyl- Benzene	Xylene	MTBE	Organic Lead	
C-2															
03/26/85	284.37	--	--	--	--	--	--	--	--	--	--	--	--	--	--
07/03/86	284.37	264.68	19.69	--	--	--	--	--	--	--	--	--	--	--	--
03/26/87	284.37	268.92	15.45	--	--	--	--	--	--	--	--	--	--	--	--
03/28/88	284.37	263.45	20.92	--	--	--	--	--	--	--	--	--	--	--	--
03/10/89	284.37	271.57	12.80	--	--	--	--	--	--	--	--	--	--	--	--
04/03/89	284.37	270.11	14.26	--	--	--	--	--	--	--	--	--	--	--	--
05/08/89	284.37	265.95	18.42	--	--	--	--	--	--	--	--	--	--	--	--
06/05/89	284.37	264.28	20.09	--	--	--	--	--	--	--	--	--	--	--	--
07/12/90	284.37	263.58	20.79	--	--	--	--	--	--	--	--	--	--	--	--
08/10/90	284.37	262.97	21.40	--	--	--	--	--	--	--	--	--	--	--	--
09/13/89	284.37	262.51	21.86	--	--	--	--	320	62	4.0	10	14	--	--	--
10/04/89	284.37	264.48	19.89	--	--	--	--	--	--	--	--	--	--	--	--
11/03/89	284.37	263.61	20.76	--	--	--	--	--	--	--	--	--	--	--	--
12/04/89	284.37	263.55	20.82	--	--	--	--	1000	240	37	66	130	--	--	--
03/07/90	284.37	266.54	17.83	--	--	--	--	--	--	--	--	--	--	--	--
03/09/90	284.37	266.54	17.83	--	--	--	--	390	280	35	27	50	--	--	--
06/12/90	284.37	264.48	19.89	--	--	--	--	700	260	34	28	55	--	--	--
09/20/90	284.37	262.40	21.97	--	--	--	--	--	--	--	--	--	--	--	--
12/20/90	284.37	266.64	17.73	--	--	--	--	--	--	--	--	--	--	--	--
03/27/91	284.37	269.27	15.10	--	--	--	--	--	--	--	--	--	--	--	--
06/18/91	284.37	261.69	22.68	--	--	--	--	--	--	--	--	--	--	--	--
09/12/91	284.37	260.45	23.92	--	--	--	--	--	--	--	--	--	--	--	--
01/23/92	284.37	263.13	21.24	--	--	--	--	--	--	--	--	--	--	--	--
04/13/92	284.37	266.83	17.54	--	--	--	--	1100	120	76	17	72	--	--	--
08/03/92	284.37	262.32	22.05	--	--	--	--	--	--	--	--	--	--	--	--
10/22/92	284.37	261.34	23.03	--	--	--	--	--	--	--	--	--	--	--	--
01/18/93	284.37	269.51	14.86	--	--	--	--	70	6.4	ND	ND	ND	--	--	--
04/19/93	284.37	267.57	16.80	--	--	--	--	--	--	--	--	--	--	--	--
07/21-22/93	284.37	265.12	19.25	--	--	--	--	--	--	--	--	--	--	--	--
10/25/93	284.37	264.72	19.65	--	--	--	--	--	--	--	--	--	--	--	--
01/21/94	284.37	258.80	25.57	--	--	--	--	43,000	5100	1800	2000	6800	--	--	--
04/18/94	284.37	274.61	9.76	--	--	--	--	--	--	--	--	--	--	--	--
07/06-07/94	284.37	265.61	18.76	--	--	--	--	--	--	--	--	--	--	--	--
10/07/94	284.37	264.20	20.17	--	--	--	--	--	--	--	--	--	--	--	--

CONTINUED ON NEXT PAGE

Cumulative Table of Well Data and Analytical Results

Vertical Measurements are in feet.

Analytical results are in parts per billion (ppb)

DATE	Well	Ground	Depth	Total			Notes	TPH- Gasoline	Benzene	Toluene	Ethyl- Benzene	Xylene	MTBE	Organic Lead
	Head Elev.	Water Elev.	To Water	SPH Thickness	SPH Removed	SPH Removed								
C-2 (CONT'D)														
01/11/95	284.37	270.33	14.04	--	--	--	Sampled annually	780	290	9.1	19	58	--	--
04/24/95	284.37	272.03	12.34	--	--	--	--	--	--	--	--	--	--	--
07/31/95	284.37	266.82	17.55	--	--	--	--	--	--	--	--	--	--	--
10/02/95	284.37	265.39	18.98	--	--	--	--	--	--	--	--	--	--	--
01/16/96	284.37	268.37	16.00	--	--	--	--	260	29	2.9	5.7	21	6.1	--
04/18/96	284.37	270.47	13.90	--	--	--	--	--	--	--	--	--	--	--
07/22/96	284.37	266.63	17.74	--	--	--	--	--	--	--	--	--	--	--
10/10/96	284.37	265.46	18.91	--	--	--	--	--	--	--	--	--	--	--
01/09/97	284.37	271.62	12.75	--	--	--	--	460	25	15	72	24	6.3	--
04/15/97	284.37	268.32	16.05	--	--	--	--	--	--	--	--	--	--	--
07/08/97	284.37	267.95	16.42	--	--	--	--	--	--	--	--	--	--	--
10/22/97	284.37	268.95	15.42	--	--	--	--	--	--	--	--	--	--	--
01/12/98	284.37	272.85	11.52	--	--	--	--	280	22	1.4	5.3	1.2	13	--
04/21/98	284.37	274.22	10.15	--	--	--	--	--	--	--	--	--	--	--
07/08/98	284.37	268.29	16.08	--	--	--	--	--	--	--	--	--	--	--
10/13/98	284.37	265.40	18.97	--	--	--	--	--	--	--	--	--	--	--
01/27/99	284.37	268.52	15.85	--	--	--	--	153	4.83	0.628	<0.5	<0.5	4.73	--

Cumulative Table of Well Data and Analytical Results

Vertical Measurements are in feet.

Analytical results are in parts per billion (ppb)

DATE	Well	Ground	Depth	Total			Notes	TPH- Gasoline	Benzene	Toluene	Ethyl- Benzene	Xylene	MTBE	Organic Lead
	Head Elev.	Water Elev.	To Water	SPH Thickness	SPH Removed	SPH Removed								
C-3														
03/26/85	285.98	--	--	--	--	--	--	--	--	--	--	--	--	--
07/03/86	285.98	259.94	26.04	--	--	--	--	--	--	--	--	--	--	--
03/26/87	285.98	260.34	25.64	--	--	--	--	--	--	--	--	--	--	--
03/28/88	285.98	257.16	28.82	--	--	--	--	--	--	--	--	--	--	--
03/10/89	285.98	263.20	22.78	--	--	--	--	--	--	--	--	--	--	--
04/03/89	285.98	263.27	22.71	--	--	--	--	--	--	--	--	--	--	--
05/08/89	285.98	260.03	25.95	--	--	--	--	--	--	--	--	--	--	--
06/05/89	285.98	258.36	27.62	--	--	--	--	--	--	--	--	--	--	--
07/12/90	285.98	257.69	28.29	--	--	--	--	--	--	--	--	--	--	--
08/10/90	285.98	257.52	28.46	--	--	--	--	--	--	--	--	--	--	--
09/13/89	285.98	256.65	29.33	--	--	--	60,000	1400	6800	2300	10,000	--	--	--
10/04/89	285.98	257.01	28.97	--	--	--	--	--	--	--	--	--	--	--
11/03/89	285.98	257.26	28.72	--	--	--	--	--	--	--	--	--	--	--
12/04/89	285.98	256.97	29.01	--	--	--	56,000	1300	3300	1400	2700	--	--	--
03/07/90	285.98	258.29	27.69	--	--	--	--	--	--	--	--	--	--	--
03/09/90	285.98	258.29	27.69	--	--	--	42,000	1100	5700	1600	7900	--	--	--
06/12/90	285.98	257.89	28.09	--	--	--	160,000	1400	7100	3400	16,000	--	--	--
09/24/90	285.98	256.80	29.18	--	--	--	53,000	850	7700	2000	10,000	--	--	--
12/20/90	285.98	257.71	28.27	--	--	--	520	1200	5400	5400	33,000	--	--	--
03/27/91	285.98	261.18	24.80	--	--	--	92,000	1300	3100	1200	11,000	--	--	--
06/18/91	285.98	255.14	30.84	--	--	--	--	--	--	--	--	--	--	--
09/12/91	285.98	254.34	31.64	0.03	--	--	--	--	--	--	--	--	--	--
01/23/92	285.98	255.46	30.52	--	--	--	--	--	--	--	--	--	--	--
04/13/92	285.98	259.04	26.94	0.01	--	--	--	--	--	--	--	--	--	--
08/03/92	285.98	255.98	30.00	--	--	--	220,000	1300	2800	3100	17,000	--	ND	--
10/22/92	285.98	255.38	30.62	0.03	--	--	--	--	--	--	--	--	--	--
01/18/93	285.98	262.07	23.91	--	--	--	1,000,000	2400	5300	10,000	61,000	--	--	--
04/19/93	285.98	260.98	25.00	--	--	--	94,000	33,000	22,000	1600	9200	--	--	--
07/21-22/93	285.98	259.43	26.55	--	--	--	44,000	2600	5500	1300	6900	--	--	--
10/25/93	285.98	257.26	28.72	--	--	--	35,000	3900	2400	1100	6600	--	--	--
01/21/94	285.98	256.32	29.66	--	--	--	120,000	4200	2200	2000	11,000	--	--	--
04/18/94	285.98	259.24	26.74	--	--	--	29,000	1200	310	520	2000	--	--	--
07/06-07/94	285.98	259.62	26.36	--	--	--	84,000	2700	1400	1400	9700	--	--	--
10/07/94	285.98	257.49	28.49	--	--	--	40,000	1600	390	1200	6100	--	--	--

CONTINUED ON NEXT PAGE

Cumulative Table of Well Data and Analytical Results

Vertical Measurements are in feet.

Analytical results are in parts per billion (ppb)

DATE	Well	Ground	Depth	Total			Notes	TPH- Gasoline	Benzene	Toluene	Ethyl- Benzene	Xylene	MTBE	Organic Lead
	Head Elev.	Water Elev.	To Water	SPH Thickness	SPH Removed	SPH Removed								
C-3 (CONT'D)														
01/11/95	285.98	262.84	23.14	--	--	--	--	34,000	4200	910	720	3800	--	--
04/24/95	285.98	266.10	19.88	--	--	--	--	210,000	43,000	28,000	2400	13,000	--	--
07/31/95	285.98	261.30	24.68	--	--	--	--	110,000	33,000	17,000	2300	12,000	--	--
10/02/95	285.98	258.84	27.14	--	--	--	--	69,000	6700	4000	2000	11,000	--	--
01/16/96	285.98	261.60	24.38	--	--	--	--	40,000	2400	440	1200	5500	<500	--
04/18/96	285.98	265.31	20.67	--	--	--	--	66,000	26,000	17,000	2200	12,000	<1250	--
07/22/96	285.98	261.32	24.66	--	--	--	--	69,000	21,000	8800	1800	9900	<1000	--
10/10/96	285.98	260.75	25.23	--	--	--	--	53,000	12,000	2600	1900	9300	<500	--
01/09/97	285.98	267.74	18.24	--	--	--	--	73,000	17,000	6000	1700	7800	<1250	--
04/15/97	285.98	263.96	22.02	--	--	--	--	160,000	28,000	17,000	2600	12,000	<2500	--
07/08/97	285.98	263.02	22.96	0.03	--	--	--	--	--	--	--	--	--	--
10/22/97	285.98	264.08	21.90	--	--	--	--	59,000	13,000	5200	2100	11,000	1500	--
01/12/98	285.98	277.93	8.05	--	--	--	--	62,000	10,000	4100	1700	8000	1000	--
04/21/98	285.98	270.70	15.28	--	--	--	--	70,000	13,000	5800	1600	7100	<1000	--
07/08/98	285.98	264.83	21.15	--	--	--	--	22,000	7300	2100	560	2900	<25	--
10/13/98	285.98	268.38	17.60	--	--	--	--	390	32	4.8	26	42	2.9	--
01/27/99	285.98	262.31	23.67	--	--	--	--	57,100	18,400	2440	1660	8690	<200	--

Cumulative Table of Well Data and Analytical Results

Vertical Measurements are in feet.

Analytical results are in parts per billion (ppb)

DATE	Well	Ground	Depth	Total			Notes	Analytical results are in parts per billion (ppb)							
	Head Elev.	Water Elev.	To Water	SPH Thickness	SPH Removed	SPH Removed		TPH-Gasoline	Benzene	Toluene	Ethyl-Benzene	Xylene	MTBE	Organic Lead	
C-4															
03/26/85	273.01	257.87	15.14	--	--	--	--	--	--	--	--	--	--	--	--
07/03/86	273.01	257.64	15.37	--	--	--	--	--	--	--	--	--	--	--	--
03/26/87	273.01	--	--	--	--	--	--	--	--	--	--	--	--	--	--
03/28/88	273.01	254.97	18.04	--	--	--	--	--	--	--	--	--	--	--	--
03/10/89	273.01	--	--	--	--	--	--	--	--	--	--	--	--	--	--
04/03/89	273.01	259.67	13.34	--	--	--	--	--	--	--	--	--	--	--	--
05/08/89	273.01	257.41	15.60	--	--	--	--	--	--	--	--	--	--	--	--
06/05/89	273.01	256.50	16.51	--	--	--	--	--	--	--	--	--	--	--	--
07/12/90	273.01	256.02	16.99	--	--	--	--	--	--	--	--	--	--	--	--
08/10/90	273.01	255.74	17.27	--	--	--	--	--	--	--	--	--	--	--	--
09/13/89	273.01	254.85	18.16	--	--	--	--	57,000	21,000	3100	3200	11,000	--	--	
10/04/89	273.01	254.77	18.24	--	--	--	--	--	--	--	--	--	--	--	--
11/03/89	273.01	254.84	18.17	--	--	--	--	--	--	--	--	--	--	--	--
12/04/89	273.01	254.56	18.45	--	--	--	--	48,000	17,000	2200	2800	9800	--	--	
03/07/90	273.01	255.81	17.20	--	--	--	--	--	--	--	--	--	--	--	--
03/09/90	273.01	255.81	17.20	--	--	--	--	43,000	20,000	2300	2800	11,000	--	--	
06/12/90	273.01	256.35	16.66	--	--	--	--	82,000	21,000	2400	4000	16,000	--	--	
09/24/90	273.01	254.90	18.11	--	--	--	--	--	--	--	--	--	--	--	--
12/20/90	273.01	--	--	--	--	--	Abandoned	--	--	--	--	--	--	--	--

Cumulative Table of Well Data and Analytical Results

Vertical Measurements are in feet.

Analytical results are in parts per billion (ppb)

DATE	Well	Ground	Depth	Total			Notes	TPH- Gasoline	Benzene	Toluene	Ethyl- Benzene	Xylene	MTBE	Organic Lead
	Head Elev.	Water Elev.	To Water	SPH Thickness	SPH Removed	SPH Removed								
C-5														
03/26/85	287.95	262.62	25.33	--	--	--	--	--	--	--	--	--	--	--
07/03/86	287.95	261.54	26.41	--	--	--	--	--	--	--	--	--	--	--
03/26/87	287.95	262.99	24.96	--	--	--	--	--	--	--	--	--	--	--
03/28/88	287.95	258.15	29.80	--	--	--	--	--	--	--	--	--	--	--
03/10/89	287.95	262.06	25.89	--	--	--	--	--	--	--	--	--	--	--
04/03/89	287.95	263.57	24.38	--	--	--	--	--	--	--	--	--	--	--
05/08/89	287.95	260.15	27.80	--	--	--	--	--	--	--	--	--	--	--
06/05/89	287.95	258.53	29.42	--	--	--	--	--	--	--	--	--	--	--
07/12/90	287.95	258.09	29.86	--	--	--	--	--	--	--	--	--	--	--
08/10/90	287.95	258.18	29.77	--	--	--	--	--	--	--	--	--	--	--
09/13/89	287.95	257.00	30.95	--	--	--	--	310	ND	ND	ND	ND	--	--
10/04/89	287.95	256.47	31.48	--	--	--	--	--	--	--	--	--	--	--
11/03/89	287.95	256.63	31.32	--	--	--	--	--	--	--	--	--	--	--
12/04/89	287.95	256.25	31.70	--	--	--	--	--	--	--	--	--	--	--
03/07/90	287.95	257.67	30.28	--	--	--	--	ND	ND	ND	ND	ND	--	--
03/09/90	287.95	257.67	30.28	--	--	--	--	ND	ND	ND	ND	ND	--	--
06/12/90	287.95	257.47	30.48	--	--	--	--	90	ND	ND	ND	ND	--	--
09/24/90	287.95	256.17	31.78	--	--	--	--	ND	ND	ND	ND	ND	--	--
12/20/90	287.95	254.66	33.29	--	--	--	--	170	ND	ND	1.0	0.7	--	--
03/27/91	287.95	259.97	27.98	--	--	--	--	--	--	--	--	--	--	--
06/18/91	287.95	255.43	32.52	--	--	--	--	--	--	--	--	--	--	--
09/12/91	287.95	254.58	33.37	--	--	--	--	--	--	--	--	--	--	--
01/23/92	287.95	255.28	32.67	--	--	--	--	--	--	--	--	--	--	--
04/13/92	287.95	259.47	28.48	--	--	--	--	140	ND	ND	0.7	ND	--	--
08/03/92	287.95	255.45	32.50	--	--	--	--	ND	ND	ND	ND	ND	--	ND
10/22/92	287.95	253.97	33.98	--	--	--	--	--	--	--	--	--	--	--
01/18/93	287.95	260.93	27.02	--	--	--	--	230	6.6	2.2	3.4	2.2	--	--
04/19/93	287.95	263.14	24.81	--	--	--	--	--	--	--	--	--	--	--
07/21-22/93	287.95	258.89	29.06	--	--	--	--	130	ND	0.6	ND	ND	--	--
10/25/93	287.95	257.00	30.95	--	--	--	--	--	--	--	--	--	--	--
01/21/94	287.95	256.04	31.91	--	--	--	--	ND	ND	ND	ND	ND	--	--
04/18/94	287.95	257.80	30.15	--	--	--	--	--	--	--	--	--	--	--
07/06-07/94	287.95	258.91	29.04	--	--	--	--	ND	ND	ND	ND	ND	--	--
10/07/94	287.95	256.11	31.84	--	--	--	--	--	--	--	--	--	--	--

CONTINUED ON NEXT PAGE

Cumulative Table of Well Data and Analytical Results

Vertical Measurements are in feet.

Analytical results are in parts per billion (ppb)

DATE	Well	Ground	Depth	Total			Notes	TPH- Gasoline	Benzene	Toluene	Ethyl- Benzene	Xylene	MTBE	Organic Lead
	Head Elev.	Water Elev.	To Water	SPH Thickness	SPH Removed	SPH Removed								
C-5 (CONT'D)														
01/11/95	287.95	262.97	24.98	--	--	--	Sampled biannually	700	1.1	6.0	1.5	2.1	--	--
04/24/95	287.95	266.17	21.78	--	--	--	--	--	--	--	--	--	--	--
07/31/95	287.95	--	--	--	--	--	Inaccessible	--	--	--	--	--	--	--
10/02/95	287.95	257.77	30.18	--	--	--	--	--	--	--	--	--	--	--
01/16/96	287.95	261.23	26.72	--	--	--	--	200	<0.5	<0.5	<0.5	1.3	<2.5	--
04/18/96	287.95	266.15	21.80	--	--	--	--	--	--	--	--	--	--	--
07/22/96	287.95	--	--	--	--	--	Inaccessible	--	--	--	--	--	--	--
10/10/96	287.95	261.17	26.78	--	--	--	--	--	--	--	--	--	--	--
01/09/97	287.95	268.93	19.02	--	--	--	--	190	0.63	<0.5	<0.5	<0.5	<2.5	--
04/15/97	287.95	264.64	23.31	--	--	--	--	--	--	--	--	--	--	--
07/08/97	287.95	--	--	--	--	--	Inaccessible	--	--	--	--	--	--	--
10/22/97	287.95	--	--	--	--	--	Inaccessible	--	--	--	--	--	--	--
01/12/98	287.95	269.37	18.58	--	--	--	--	200	1.1	0.57	1.3	2.5	<2.5	--
04/21/98	287.95	272.75	15.20	--	--	--	--	--	--	--	--	--	--	--
07/08/98	287.95	264.76	23.19	--	--	--	--	52*	<0.5	<0.5	<0.5	<0.5	<2.5	--
10/13/98	287.95	261.95	26.00	--	--	--	--	--	--	--	--	--	--	--
01/27/99	287.95	263.97	23.98	--	--	--	--	<50	<0.5	<0.5	<0.5	<0.5	<2.0	--

* Chromatogram pattern indicates an unidentified hydrocarbon.

Cumulative Table of Well Data and Analytical Results

Vertical Measurements are in feet.

Analytical results are in parts per billion (ppb)

DATE	Well Head Elev.	Ground Water Elev.	Depth To Water	SPH Thickness	SPH Removed	Total SPH Removed	Notes	TPH-Gasoline	Benzene	Toluene	Ethyl-Benzene	Xylene	MTBE	Organic Lead
C-6														
03/26/85	--	--	16.74	--	--	--	--	--	--	--	--	--	--	--
07/03/86	275.28	257.82	17.46	--	--	--	--	--	--	--	--	--	--	--
03/26/87	275.28	256.91	18.37	--	--	--	--	--	--	--	--	--	--	--
03/28/88	275.28	245.44	29.84	--	--	--	--	--	--	--	--	--	--	--
03/10/89	275.28	260.84	14.44	--	--	--	--	--	--	--	--	--	--	--
04/03/89	275.28	260.84	14.44	--	--	--	--	--	--	--	--	--	--	--
05/08/89	275.28	258.12	17.16	--	--	--	--	--	--	--	--	--	--	--
06/05/89	275.28	256.77	18.51	--	--	--	--	--	--	--	--	--	--	--
07/12/90	275.28	256.57	18.71	--	--	--	--	--	--	--	--	--	--	--
08/10/90	275.28	255.96	19.32	--	--	--	--	--	--	--	--	--	--	--
09/13/89	275.28	255.33	19.95	--	--	--	--	47	5600	3000	2400	10,000	--	--
10/04/89	275.28	255.41	19.87	--	--	--	--	--	--	--	--	--	--	--
11/03/89	275.28	255.93	19.35	--	--	--	--	--	--	--	--	--	--	--
12/04/89	275.28	255.69	19.59	--	--	--	--	40,000	8100	1800	1700	7500	--	--
03/07/90	275.28	256.89	18.39	--	--	--	--	--	--	--	--	--	--	--
03/09/90	275.28	256.89	18.39	--	--	--	--	73,000	23,000	5900	3400	17,000	--	--
06/12/90	275.28	256.41	18.87	--	--	--	--	85,000	19,000	6500	3400	16,000	--	--
09/24/90	275.28	255.29	19.99	--	--	--	--	72,000	15,000	3200	2600	11,000	--	--
12/20/90	275.28	253.71	21.57	--	--	--	--	100,000	11,000	4200	3400	16,000	--	--
03/27/91	275.28	258.96	16.32	--	--	--	--	100,000	11,000	4400	2300	11,000	--	--
06/18/91	275.28	251.95	23.33	--	--	--	--	--	--	--	--	--	--	--
09/12/91	275.28	251.32	23.96	--	--	--	--	--	--	--	--	--	--	--
01/23/92	275.28	263.20	12.08	--	--	--	--	--	--	--	--	--	--	--
04/13/92	275.28	255.43	19.85	--	--	--	Sheen	--	--	--	--	--	--	--
08/03/92	275.28	260.56	14.72	--	--	--	--	120,000	16,000	1100	2300	15,000	--	ND
10/22/92	275.28	260.37	14.91	--	--	--	--	63,000	7400	920	1800	14,000	--	--
01/18/93	275.28	259.84	15.44	--	--	--	--	77,000	13,000	1600	2700	12,000	--	--
04/19/93	275.28	266.03	9.25	--	--	--	--	56,000	14,000	1100	2400	9100	--	--
07/21-22/93	275.28	257.93	17.35	--	--	--	--	38,000	6600	610	1500	5800	--	--
10/25/93	275.28	254.25	21.03	--	--	--	--	42,000	11,000	800	2200	8200	--	--
01/21/94	275.28	253.71	21.57	--	--	--	--	57,000	11,000	940	2300	9800	--	--
04/18/94	275.28	257.17	18.11	--	--	--	--	48,000	9800	830	1900	7500	--	--
07/06-07/94	275.28	258.28	17.00	--	--	--	--	46,000	6800	610	900	6200	--	--
10/07/94	275.28	256.09	19.19	--	--	--	--	35,000	5900	410	1400	3800	--	--

CONTINUED ON NEXT PAGE

Cumulative Table of Well Data and Analytical Results

Vertical Measurements are in feet.

Analytical results are in parts per billion (ppb)

DATE	Well	Ground	Depth	Total			Notes	Analytical results are in parts per billion (ppb)						
	Head Elev.	Water Elev.	To Water	SPH Thickness	SPH Removed	SPH Removed		TPH-Gasoline	Benzene	Toluene	Ethyl-Benzene	Xylene	MTBE	Organic Lead
C-6 (CONT'D)														
01/11/95	275.28	256.64	18.64	--	--	--	--	54,000	1200	1100	2100	9500	--	--
04/24/95	275.28	262.72	12.56	--	--	--	--	81,000	12,000	1500	2400	9900	--	--
07/31/95	275.28	259.54	15.74	--	--	--	--	75,000	12,000	1200	2800	11,000	--	--
10/02/95	275.28	257.56	17.72	--	--	--	--	59,000	13,000	990	2800	10,000	--	--
01/16/96	275.28	259.81	15.47	--	--	--	--	63,000	10,000	650	2200	7500	<500	--
04/18/96	275.28	259.33	15.95	--	--	--	--	56,000	9800	590	1500	5800	660	--
07/22/96	275.28	--	--	--	--	--	Inaccessible	--	--	--	--	--	--	--
10/10/96	275.28	--	--	--	--	--	Inaccessible	--	--	--	--	--	--	--
01/09/97	275.28	--	--	--	--	--	Inaccessible	--	--	--	--	--	--	--
04/15/97	275.28	--	--	--	--	--	Inaccessible	--	--	--	--	--	--	--
07/08/97	275.28	--	--	--	--	--	Inaccessible	--	--	--	--	--	--	--
07/15/97	275.28	260.95	14.33	--	--	--	--	64,000	12,000	400	1500	4400	<1000	--
10/22/97	275.28	261.80	13.48	--	--	--	--	49,000	15,000	570	1900	5600	1500	--
01/12/98	275.28	265.14	10.14	--	--	--	--	60,000	16,000	540	1800	5400	<1000	--
04/21/98	275.28	267.73	7.55	--	--	--	--	51,000	16,000	310	1400	3400	<1000	--
07/08/98	275.28	262.80	12.48	--	--	--	--	19,000	8200	150	720	1100	<250	--
10/13/98	275.28	259.82	15.46	--	--	--	--	46,000	12,000	490	1600	3600	<250	--
01/27/99	275.28	263.32	11.96	--	--	--	--	16,000	4440	132	688	1290	190	--

Cumulative Table of Well Data and Analytical Results

Vertical Measurements are in feet.

Analytical results are in parts per billion (ppb)

DATE	Well Head Elev.	Ground Water Elev.	Depth To Water	SPH Thickness	SPH Removed	Total SPH Removed	Notes	TPH-Gasoline	Benzene	Toluene	Ethyl-Benzene	Xylene	MTBE	Organic Lead
C-7														
03/26/85	--	--	9.61	--	--	--	--	--	--	--	--	--	--	--
07/03/86	270.70	259.96	10.74	--	--	--	--	--	--	--	--	--	--	--
03/26/87	270.70	260.62	10.08	--	--	--	--	--	--	--	--	--	--	--
03/28/88	270.70	256.91	13.79	--	--	--	--	--	--	--	--	--	--	--
03/10/89	270.70	260.28	10.42	--	--	--	--	--	--	--	--	--	--	--
04/03/89	270.70	261.56	9.14	--	--	--	--	--	--	--	--	--	--	--
05/08/89	270.70	258.79	11.91	--	--	--	--	--	--	--	--	--	--	--
06/05/89	270.70	259.16	11.54	--	--	--	--	--	--	--	--	--	--	--
07/12/90	270.70	257.25	13.45	--	--	--	--	--	--	--	--	--	--	--
08/10/90	270.70	257.33	13.37	--	--	--	--	--	--	--	--	--	--	--
09/13/89	270.70	256.10	14.60	--	--	--	--	410	1.3	ND	10	ND	--	--
10/04/89	270.70	255.53	15.17	--	--	--	--	--	--	--	--	--	--	--
11/03/89	270.70	255.42	15.28	--	--	--	--	--	--	--	--	--	--	--
12/04/89	270.70	255.00	15.70	--	--	--	--	1000	1.0	ND	5.0	ND	--	--
03/07/90	270.70	256.48	14.22	--	--	--	--	--	--	--	--	--	--	--
03/09/90	270.70	256.48	14.22	--	--	--	--	590	2.8	2.4	3.5	2.0	--	--
06/12/90	270.70	256.52	14.18	--	--	--	--	1200	ND	5	8.2	3.2	--	--
09/24/90	270.70	255.26	15.44	--	--	--	Sheen	400	1.4	1.9	1.4	2.2	--	--
09/24/90	270.70	255.26	15.44	--	--	--	Duplicate	580	ND	2.4	1.4	1.5	--	--
12/20/90	270.70	253.62	17.08	--	--	--	--	2300	ND	6.5	4.7	9.3	--	--
03/27/91	270.70	258.05	12.65	--	--	--	--	980	ND	2.4	9.1	3.0	--	--
06/18/91	270.70	254.26	16.44	--	--	--	--	--	--	--	--	--	--	--
09/12/91	270.70	253.65	17.05	--	--	--	--	1200	ND	3.1	6.5	2.7	--	--
01/23/92	270.70	253.78	16.92	--	--	--	--	--	--	--	--	--	--	--
04/13/92	270.70	257.70	13.00	--	--	--	--	830	ND	1.0	7.8	1.2	--	--
08/03/92	270.70	--	--	--	--	--	--	--	--	--	--	--	--	--
10/22/92	270.70	--	--	--	--	--	Could not locate	--	--	--	--	--	--	--
01/18/93	270.70	--	--	--	--	--	Could not locate	--	--	--	--	--	--	--
04/19/93	270.70	--	--	--	--	--	Could not locate	--	--	--	--	--	--	--
07/21-22/93	270.70	257.76	12.94	--	--	--	--	890	0.9	3.0	4.0	4.0	--	--
10/25/93	270.70	255.87	14.83	--	--	--	--	--	--	--	--	--	--	--
01/21/94	270.70	254.76	15.94	--	--	--	--	660	ND	6.0	1.0	3.0	--	--
04/18/94	270.70	255.72	14.98	--	--	--	--	--	--	--	--	--	--	--
07/06-07/94	270.70	257.76	12.94	--	--	--	--	960	ND	5.8	4.2	8.2	--	--
10/07/94	270.70	254.87	15.83	--	--	--	--	--	--	--	--	--	--	--

CONTINUED ON NEXT PAGE

Cumulative Table of Well Data and Analytical Results

Vertical Measurements are in feet.

Analytical results are in parts per billion (ppb)

DATE	Well Head Elev.	Ground Water Elev.	Depth To Water	SPH Thickness	SPH Removed	Total SPH Removed	Notes	TPH-Gasoline	Benzene	Toluene	Ethyl-Benzene	Xylene	MTBE	Organic Lead
C-7 (CONT'D)														
01/11/95	270.70	261.45	9.25	--	--	--	Sampled biannually	900	<0.5	<0.5	2.3	1.3	--	--
04/24/95	270.70	264.00	6.70	--	--	--	--	--	--	--	--	--	--	--
07/31/95	270.70	259.46	11.24	--	--	--	--	690	<1.2	<1.2	<1.2	<1.2	--	--
10/02/95	270.70	256.68	14.02	--	--	--	--	--	--	--	--	--	--	--
01/16/96	270.70	259.48	11.22	--	--	--	--	<50	<0.5	<0.5	<0.5	<0.5	<2.5	--
04/18/96	270.70	264.05	6.65	--	--	--	--	--	--	--	--	--	--	--
07/22/96	270.70	259.60	11.10	--	--	--	--	360	4.4	2.0	<0.5	<0.5	17	--
10/10/96	270.70	259.35	11.35	--	--	--	--	--	--	--	--	--	--	--
01/09/97	270.70	266.82	3.88	--	--	--	--	69	<0.5	<0.5	<0.5	<0.5	<2.5	--
04/15/97	270.70	262.82	7.88	--	--	--	--	--	--	--	--	--	--	--
07/08/97	270.70	261.70	9.00	--	--	--	--	710	8.0	1.2	<0.5	<0.5	22	--
10/22/97	270.70	262.09	8.61	--	--	--	--	--	--	--	--	--	--	--
01/12/98	270.70	267.03	3.67	--	--	--	--	400	7.2	<1.0	1.6	1.3	16	--
04/21/98	270.70	270.19	0.51	--	--	--	--	--	--	--	--	--	--	--
07/08/98	270.70	263.72	6.98	--	--	--	--	<50	<0.5	<0.5	<0.5	<0.5	<2.5	--
10/13/98	270.70	261.58	9.12	--	--	--	--	--	--	--	--	--	--	--
01/27/99	270.70	262.15	8.55	--	--	--	--	<50	<0.5	<0.5	<0.5	<0.5	<2.0	--

Cumulative Table of Well Data and Analytical Results

Vertical Measurements are in feet.

Analytical results are in parts per billion (ppb)

DATE	Well Head Elev.	Ground Water Elev.	Depth To Water	SPH Thickness	SPH Removed	Total SPH Removed	Notes	TPH-Gasoline	Benzene	Toluene	Ethyl-Benzene	Xylene	MTBE	Organic Lead
C-8														
03/26/85	--	--	8.68	--	--	--	--	--	--	--	--	--	--	--
07/03/86	288.40	274.51	13.89	--	--	--	--	--	--	--	--	--	--	--
03/26/87	288.40	282.39	6.01	--	--	--	--	--	--	--	--	--	--	--
03/28/88	288.40	277.74	10.66	--	--	--	--	--	--	--	--	--	--	--
03/10/89	288.40	281.79	6.61	--	--	--	--	--	--	--	--	--	--	--
04/03/89	288.40	281.94	6.46	--	--	--	--	--	--	--	--	--	--	--
05/08/89	288.40	279.43	8.97	--	--	--	--	--	--	--	--	--	--	--
06/05/89	288.40	277.52	10.88	--	--	--	--	--	--	--	--	--	--	--
07/12/90	288.40	276.25	12.15	--	--	--	--	--	--	--	--	--	--	--
08/10/90	288.40	275.94	12.46	--	--	--	--	--	--	--	--	--	--	--
09/13/89	288.40	275.62	12.78	--	--	--	--	ND	ND	ND	ND	ND	--	--
10/04/89	288.40	275.89	12.51	--	--	--	--	--	--	--	--	--	--	--
11/03/89	288.40	273.77	14.63	--	--	--	--	--	--	--	--	--	--	--
12/04/89	288.40	278.81	9.59	--	--	--	--	64	0.6	0.6	ND	1.0	--	--
03/07/90	288.40	279.60	8.80	--	--	--	--	--	--	--	--	--	--	--
03/09/90	288.40	279.60	8.80	--	--	--	--	ND	ND	ND	ND	ND	--	--
06/12/90	288.40	279.46	8.94	--	--	--	--	120	2.5	1.2	1.0	1.4	--	--
09/24/90	288.40	274.86	13.54	--	--	--	--	--	--	--	--	--	--	--
12/20/90	288.40	279.07	9.33	--	--	--	--	--	--	--	--	--	--	--
03/27/91	288.40	282.30	6.10	--	--	--	--	54	0.7	ND	0.7	1.9	--	--
06/18/91	288.40	276.44	11.96	--	--	--	--	--	--	--	--	--	--	--
09/12/91	288.40	274.80	13.60	--	--	--	--	ND	ND	ND	ND	ND	--	--
09/12/91	288.40	274.80	13.60	--	--	--	Duplicate	ND	ND	ND	ND	ND	--	--
01/23/92	288.40	264.20	24.20	--	--	--	--	--	--	--	--	--	--	--
04/13/92	288.40	280.05	8.35	--	--	--	--	ND	ND	ND	ND	ND	--	--
08/03/92	288.40	275.82	12.58	--	--	--	--	ND	ND	ND	ND	ND	--	ND
10/22/92	288.40	275.30	13.10	--	--	--	--	ND	ND	ND	ND	ND	--	--
01/18/93	288.40	282.28	6.12	--	--	--	--	ND	ND	ND	ND	ND	--	--
04/19/93	288.40	281.35	7.05	--	--	--	--	ND	ND	ND	ND	ND	--	--
07/21-22/93	288.40	277.05	11.35	--	--	--	--	ND	ND	ND	ND	ND	--	--
10/25/93	288.40	275.55	12.85	--	--	--	--	ND	ND	ND	ND	ND	--	--
01/21/94	288.40	277.85	10.55	--	--	--	--	ND	ND	ND	ND	ND	--	--
04/18/94	288.40	278.89	9.51	--	--	--	--	ND	1.2	0.9	ND	1.6	--	--
07/06-07/94	288.40	277.02	11.38	--	--	--	--	ND	ND	ND	ND	ND	--	--
10/07/94	288.40	275.48	12.92	--	--	--	--	ND	ND	ND	ND	ND	--	--

CONTINUED ON NEXT PAGE

Cumulative Table of Well Data and Analytical Results

Vertical Measurements are in feet.

Analytical results are in parts per billion (ppb)

DATE	Well Head Elev.	Ground Water Elev.	Depth To Water	SPH Thickness	Total		Notes	TPH- Gasoline	Benzene	Toluene	Ethyl- Benzene	Xylene	MTBE	Organic Lead
					SPH Removed	SPH Removed								
C-8 (CONT'D)														
01/11/95	288.40	283.04	5.36	--	--	--	--	<50	<0.5	<0.5	<0.5	<0.5	--	--
04/24/95	288.40	281.82	6.58	--	--	--	--	<50	<0.5	0.61	<0.5	0.51	--	--
07/31/95	288.40	278.94	9.46	--	--	--	--	<50	<0.5	<0.5	<0.5	<0.5	--	--
10/02/95	288.40	276.56	11.84	--	--	--	--	<50	<0.5	<0.5	<0.5	<0.5	--	--
01/16/96	288.40	281.40	7.00	--	--	--	--	<50	<0.5	<0.5	<0.5	<0.5	5.4	--
04/18/96	288.40	281.77	6.63	--	--	--	--	<50	<0.5	<0.5	<0.5	<0.5	<2.5	--
07/22/96	288.40	280.49	7.91	--	--	--	--	<50	<0.5	<0.5	<0.5	<0.5	<2.5	--
10/10/96	288.40	279.71	8.69	--	--	--	--	<50	<0.5	<0.5	<0.5	<0.5	<2.5	--
01/09/97	288.40	283.11	5.29	--	--	--	--	<50	<0.5	<0.5	<0.5	<0.5	<2.5	--
04/15/97	288.40	281.90	6.50	--	--	--	--	<50	<0.5	<0.5	<0.5	<0.5	<2.5	--
07/08/97	288.40	281.90	6.50	--	--	--	--	<50	<0.5	<0.5	<0.5	<0.5	<2.5	--
10/22/97	288.40	283.00	5.40	--	--	--	--	<50	<0.5	<0.5	<0.5	<0.5	<2.5	--
01/12/98	288.40	284.27	4.13	--	--	--	--	<50	<0.5	<0.5	<0.5	<0.5	<2.5	--
04/21/98	288.40	283.84	4.56	--	--	--	--	<50	<0.5	<0.5	<0.5	<0.5	<2.5	--
07/08/98	288.40	277.81	10.59	--	--	--	--	<50	<0.5	0.57	<0.5	<0.5	<2.5	--
10/13/98	288.40	276.32	12.08	--	--	--	--	<50	<0.5	<0.5	<0.5	<0.5	<2.5	--
01/27/99	288.40	276.89	11.51	--	--	--	--	<50	<0.5	<0.5	<0.5	<0.5	<2.0	--

Cumulative Table of Well Data and Analytical Results

Vertical Measurements are in feet.

Analytical results are in parts per billion (ppb)

DATE	Well	Ground	Depth	Total			Notes	TPH- Gasoline	Benzene	Toluene	Ethyl- Benzene	Xylene	MTBE	Organic Lead
	Head Elev.	Water Elev.	To Water	SPH Thickness	SPH Removed	SPH Removed								
C-9														
07/03/86	268.46	254.57	13.89	--	--	--	--	--	--	--	--	--	--	--
03/26/87	268.46	254.72	13.74	--	--	--	--	--	--	--	--	--	--	--
03/28/88	268.46	253.47	14.99	--	--	--	--	--	--	--	--	--	--	--
03/10/89	268.46	255.07	13.39	--	--	--	--	--	--	--	--	--	--	--
04/03/89	268.46	255.62	12.84	--	--	--	--	--	--	--	--	--	--	--
05/08/89	268.46	254.08	14.38	--	--	--	--	--	--	--	--	--	--	--
06/05/89	268.46	253.10	15.36	--	--	--	--	--	--	--	--	--	--	--
07/12/90	268.46	252.81	15.65	--	--	--	--	--	--	--	--	--	--	--
08/10/90	268.46	252.66	15.80	--	--	--	--	--	--	--	--	--	--	--
09/13/89	268.46	251.93	16.53	--	--	--	--	42,000	14,000	1100	2800	4200	--	--
10/04/89	268.46	251.94	16.52	--	--	--	--	--	--	--	--	--	--	--
11/03/89	268.46	251.95	16.51	--	--	--	--	--	--	--	--	--	--	--
12/04/89	268.46	251.67	16.79	--	--	--	--	36,000	11,000	670	2500	3800	--	--
03/07/90	268.46	252.24	16.22	--	--	--	--	--	--	--	--	--	--	--
03/09/90	268.46	252.24	16.22	--	--	--	--	28,000	12,000	940	3000	4700	--	--
06/12/90	268.46	253.58	14.88	--	--	--	--	39,000	11,000	1600	2300	4800	--	--
09/24/90	268.46	252.16	16.30	--	--	--	--	120,000	13,000	1600	3700	6800	--	--
12/20/90	268.46	251.23	17.23	--	--	--	--	51,000	9300	560	2800	3300	--	--
12/20/90	268.46	251.23	17.23	--	--	--	Duplicate	44,000	12,000	580	2800	3500	--	--
03/27/91	268.46	254.68	13.78	--	--	--	--	56,000	3400	5000	1600	5600	--	--
06/18/91	268.46	249.82	18.64	--	--	--	--	--	--	--	--	--	--	--
09/12/91	268.46	--	--	--	--	--	Inaccessible	--	--	--	--	--	--	--
10/24/95	268.46	250.39	18.07	--	--	--	--	30,000	7200	440	2500	1600	--	--
01/16/96	268.46	252.18	16.28	--	--	--	--	36,000	8200	700	2500	2100	<500	--
07/08/98	268.46	256.46	12.00	--	--	--	--	20,000	4900	880	1100	2500	<250	--
10/13/98	268.46	254.19	14.27	--	--	--	--	28,000	7100	1100	1300	2700	<125	--
01/27/99	268.46	256.92	11.54	--	--	--	--	12,100	3490	249	654	1260	131	--

Cumulative Table of Well Data and Analytical Results

Vertical Measurements are in feet.

Analytical results are in parts per billion (ppb)

DATE	Well	Ground	Depth	Total			Notes	TPH- Gasoline	Benzene	Toluene	Ethyl- Benzene	Xylene	MTBE	Organic Lead
	Head Elev.	Water Elev.	To Water	SPH Thickness	SPH Removed	SPH Removed								
C-10A														
03/07/90	264.84	244.63	20.21	--	--	--	--	--	--	--	--	--	--	--
03/09/90	264.84	--	--	--	--	--	--	ND	1.6	0.7	0.8	3.5	--	--
06/12/90	264.84	245.14	19.70	--	--	--	--	ND	ND	ND	ND	ND	--	--
09/24/90	264.84	245.30	19.54	--	--	--	--	ND	ND	ND	ND	ND	--	--
12/20/90	264.84	245.00	19.84	--	--	--	--	ND	ND	ND	ND	ND	--	--
03/27/91	264.84	246.83	18.01	--	--	--	--	--	--	--	--	--	--	--
06/18/91	264.84	244.68	20.16	--	--	--	--	ND	ND	ND	ND	ND	--	--
09/12/91	264.84	244.27	20.57	--	--	--	--	ND	ND	ND	ND	ND	--	--
01/23/92	264.84	244.17	20.67	--	--	--	--	ND	ND	ND	ND	ND	--	--
04/13/92	264.84	245.44	19.40	--	--	--	--	53	0.9	1.3	ND	1.0	--	--
08/03/92	264.84	245.03	19.81	--	--	--	--	ND	ND	ND	ND	ND	--	ND
10/22/92	264.84	245.01	19.83	--	--	--	--	ND	ND	ND	ND	0.5	--	--
01/18/93	264.84	247.80	17.04	--	--	--	--	ND	ND	ND	ND	ND	--	--
04/19/93	264.84	247.07	17.77	--	--	--	--	ND	ND	ND	ND	ND	--	--
04/19/93	264.84	247.28	17.56	--	--	--	--	ND	ND	ND	ND	ND	--	--
10/25/93	264.84	247.07	17.77	--	--	--	--	ND	ND	ND	ND	ND	--	--
01/21/94	264.84	246.93	17.91	--	--	--	--	ND	ND	ND	ND	ND	--	--
04/18/94	264.84	247.81	17.03	--	--	--	--	ND	3.0	3.0	1.4	5.5	--	--
07/06-07/94	264.84	248.06	16.78	--	--	--	--	ND	ND	ND	ND	ND	--	--
10/07/94	264.84	247.63	17.21	--	--	--	--	ND	ND	ND	ND	ND	--	--
01/11/95	264.84	248.78	16.06	--	--	--	--	<50	<0.5	<0.5	<0.5	<0.5	--	--
04/24/95	264.84	248.32	16.52	--	--	--	--	<50	<0.5	<0.5	<0.5	<0.5	--	--
07/31/95	264.84	245.82	19.02	--	--	--	--	<50	<0.5	<0.5	<0.5	<0.5	--	--
10/02/95	264.84	245.14	19.70	--	--	--	--	<50	<0.5	<0.5	<0.5	<0.5	--	--
01/16/96	264.84	246.21	18.63	--	--	--	--	<50	<0.5	<0.5	<0.5	<0.5	<2.5	--
04/18/96	264.84	247.19	17.65	--	--	--	--	<50	<0.5	<0.5	<0.5	<0.5	<2.5	--
07/22/96	264.84	245.99	18.85	--	--	--	--	<50	<0.5	<0.5	<0.5	<0.5	<2.5	--
10/10/96	264.84	245.40	19.44	--	--	--	--	<50	<0.5	<0.5	<0.5	<0.5	<2.5	--
01/09/97	264.84	248.00	16.84	--	--	--	--	<50	<0.5	<0.5	<0.5	<0.5	<2.5	--
04/15/97	264.84	246.47	18.37	--	--	--	--	<50	<0.5	<0.5	<0.5	<0.5	<2.5	--
07/08/97	264.84	246.33	18.51	--	--	--	--	<50	<0.5	<0.5	<0.5	<0.5	<2.5	--
10/22/97	264.84	246.64	18.20	--	--	--	--	<50	<0.5	<0.5	<0.5	<0.5	<2.5	--

CONTINUED ON NEXT PAGE

Cumulative Table of Well Data and Analytical Results

Vertical Measurements are in feet.

Analytical results are in parts per billion (ppb)

DATE	Well	Ground	Depth	Total			Notes	TPH- Gasoline	Benzene	Toluene	Ethyl- Benzene	Xylene	MTBE	Organic Lead
	Head Elev.	Water Elev.	To Water	SPH Thickness	SPH Removed	SPH Removed								
C-10A (CONT'D)														
01/12/98	264.84	248.00	16.84	--	--	--	--	<50	<0.5	<0.5	<0.5	<0.5	<2.5	--
04/21/98	264.84	248.04	16.80	--	--	--	--	<50	<0.5	<0.5	<0.5	<0.5	<2.5	--
07/08/98	264.84	246.89	17.95	--	--	--	--	<50	<0.5	0.57	<0.5	<0.5	<2.5	--
10/13/98	264.84	246.16	18.68	--	--	--	--	<50	1.3	<0.5	0.67	1.5	<2.5	--
01/27/99	264.84	246.96	17.88	--	--	--	--	79.2	<0.5	<0.5	<0.5	<0.5	<2.0	--

Cumulative Table of Well Data and Analytical Results

Vertical Measurements are in feet.

Analytical results are in parts per billion (ppb)

DATE	Well Head Elev.	Ground Water Elev.	Depth To Water	SPH Thickness	SPH Removed	Total SPH Removed	Notes	TPH-Gasoline	Benzene	Toluene	Ethyl-Benzene	Xylene	MTBE	Organic Lead
C-10B														
03/07/90	264.85	243.41	21.44	--	--	--	--	--	--	--	--	--	--	--
06/12/90	264.85	244.91	19.94	--	--	--	--	ND	ND	ND	ND	ND	--	--
09/24/90	264.85	245.08	19.77	--	--	--	--	ND	ND	ND	ND	ND	--	--
12/20/90	264.85	244.85	20.00	--	--	--	--	ND	ND	ND	ND	ND	--	--
03/27/91	264.85	246.62	18.23	--	--	--	--	--	--	--	--	--	--	--
06/18/91	264.85	244.41	20.44	--	--	--	--	--	--	--	--	--	--	--
09/12/91	264.85	244.03	20.82	--	--	--	--	ND	ND	ND	ND	ND	--	--
01/23/92	264.85	243.93	20.92	--	--	--	--	ND	ND	ND	ND	ND	--	--
04/13/92	264.85	245.17	19.68	--	--	--	--	ND	ND	ND	ND	ND	--	--
08/03/92	264.85	244.78	20.07	--	--	--	--	ND	ND	ND	ND	ND	--	ND
10/22/92	264.85	244.73	20.12	--	--	--	--	ND	ND	ND	ND	ND	--	--
01/18/93	264.85	247.49	17.36	--	--	--	--	60	3.3	11	2.1	8.9	--	--
04/19/93	264.85	246.95	17.90	--	--	--	--	ND	ND	ND	ND	ND	--	--
07/21-22/93	264.85	246.99	17.86	--	--	--	--	ND	ND	ND	ND	ND	--	--
10/25/93	264.85	246.75	18.10	--	--	--	--	ND	ND	ND	ND	ND	--	--
01/21/94	264.85	246.62	18.23	--	--	--	--	ND	ND	ND	ND	ND	--	--
04/18/94	264.85	247.49	17.36	--	--	--	--	ND	ND	ND	ND	0.5	--	--
07/06-07/94	264.85	247.80	17.05	--	--	--	--	ND	ND	ND	ND	ND	--	--
10/07/94	264.85	247.31	17.54	--	--	--	--	ND	ND	ND	ND	ND	--	--
01/11/95	264.85	248.61	16.24	--	--	--	--	<50	<0.5	<0.5	<0.5	<0.5	--	--
04/24/95	264.85	247.95	16.90	--	--	--	--	<50	<0.5	<0.5	<0.5	<0.5	--	--
07/31/95	264.85	245.57	19.28	--	--	--	--	<50	<0.5	<0.5	<0.5	<0.5	--	--
10/02/95	264.85	244.91	19.94	--	--	--	--	<50	<0.5	<0.5	<0.5	<0.5	--	--
01/16/96	264.85	246.25	18.60	--	--	--	--	<50	<0.5	<0.5	<0.5	<0.5	<2.5	--
04/18/96	264.85	246.87	17.98	--	--	--	--	<50	<0.5	<0.5	<0.5	<0.5	<2.5	--
07/22/96	264.85	245.75	19.10	--	--	--	--	<50	<0.5	<0.5	<0.5	<0.5	<2.5	--
10/10/96	264.85	245.14	19.71	--	--	--	--	<50	<0.5	<0.5	<0.5	<0.5	<2.5	--
01/09/97	264.85	247.65	17.20	--	--	--	--	<50	<0.5	<0.5	<0.5	<0.5	<2.5	--
04/15/97	264.85	246.11	18.74	--	--	--	--	<50	<0.5	<0.5	<0.5	<0.5	<2.5	--
07/08/97	264.85	246.10	18.75	--	--	--	--	<50	<0.5	<0.5	<0.5	<0.5	<2.5	--
10/22/97	264.85	246.35	18.50	--	--	--	--	<50	<0.5	<0.5	<0.5	<0.5	<2.5	--
01/12/98	264.85	247.71	17.14	--	--	--	--	<50	<0.5	<0.5	<0.5	<0.5	<2.5	--
04/21/98	264.85	247.69	17.16	--	--	--	--	<50	<0.5	<0.5	<0.5	<0.5	<2.5	--
07/08/98	264.85	246.61	18.24	--	--	--	--	<50	<0.5	0.62	<0.5	<0.5	<2.5	--
10/13/98	264.85	245.93	18.92	--	--	--	--	<50	<0.5	<0.5	<0.5	<0.5	<2.5	--
01/27/99	264.85	246.74	18.11	--	--	--	--	<50	<0.5	<0.5	<0.5	<0.5	<2.0	--

Cumulative Table of Well Data and Analytical Results

Vertical Measurements are in feet.

Analytical results are in parts per billion (ppb)

DATE	Well	Ground	Depth	Total			Notes	TPH- Gasoline	Benzene	Toluene	Ethyl- Benzene	Xylene	MTBE	Organic Lead
	Head Elev.	Water Elev.	To Water	SPH	SPH	SPH								
				Thickness	Removed	Removed								
C-11														
03/07/90	265.30	242.56	22.74	--	--	--	--	--	--	--	--	--	--	--
03/09/90	265.30	--	--	--	--	--	--	ND	1.2	0.7	ND	1.4	--	--
06/12/90	265.30	243.32	21.98	--	--	--	--	ND	ND	ND	ND	ND	--	--
09/24/90	265.30	243.42	21.88	--	--	--	--	ND	ND	ND	ND	ND	--	--
12/20/90	265.30	242.12	23.18	--	--	--	--	ND	ND	ND	ND	ND	--	--
03/27/91	265.30	243.78	21.52	--	--	--	--	ND	ND	ND	ND	1.5	--	--
06/18/91	265.30	243.40	21.90	--	--	--	--	--	--	--	--	--	--	--
09/12/91	265.30	242.60	22.70	--	--	--	--	ND	ND	ND	ND	ND	--	--
01/23/92	265.30	241.84	23.46	--	--	--	--	ND	ND	ND	ND	ND	--	--
04/13/92	265.30	243.73	21.57	--	--	--	--	ND	ND	ND	ND	ND	--	--
08/03/92	265.30	242.63	22.67	--	--	--	--	ND	ND	ND	ND	ND	--	ND
10/22/92	265.30	242.01	23.29	--	--	--	--	ND	ND	ND	ND	ND	--	--
01/18/93	265.30	243.94	21.36	--	--	--	--	ND	ND	1.2	ND	2.2	--	--
04/19/93	265.30	245.33	19.97	--	--	--	--	ND	ND	ND	ND	ND	--	--
07/21-22/93	265.30	244.65	20.65	--	--	--	--	ND	ND	ND	ND	ND	--	--
10/25/93	265.30	244.55	20.75	--	--	--	--	ND	ND	ND	ND	ND	--	--
01/21/94	265.30	243.69	21.61	--	--	--	--	ND	ND	ND	ND	ND	--	--
04/18/94	265.30	244.52	20.78	--	--	--	--	ND	ND	ND	ND	ND	--	--
07/06-07/94	265.30	244.88	20.42	--	--	--	--	ND	ND	ND	ND	ND	--	--
10/07/94	265.30	243.70	21.60	--	--	--	--	ND	ND	ND	ND	ND	--	--
01/11/95	265.30	245.28	20.02	--	--	--	--	<50	<0.5	<0.5	<0.5	<0.5	--	--
04/24/95	265.30	247.58	17.72	--	--	--	--	<50	<0.5	<0.5	<0.5	<0.5	--	--
07/31/95	265.30	246.12	19.18	--	--	--	--	<50	<0.5	<0.5	<0.5	<0.5	--	--
10/02/95	265.30	244.88	20.42	--	--	--	--	<50	<0.5	<0.5	<0.5	<0.5	--	--
01/16/96	265.30	245.48	19.82	--	--	--	--	<50	<0.5	<0.5	<0.5	<0.5	<2.5	--
04/18/96	265.30	248.30	17.00	--	--	--	--	260	7.9	6.9	5.3	23	11	--
07/22/96	265.30	248.40	16.90	--	--	--	--	<50	<0.5	<0.5	<0.5	<0.5	<2.5	--
10/10/96	265.30	245.74	19.56	--	--	--	--	130	32	2.7	4.3	14	3.4	--
01/09/97	265.30	249.28	16.02	--	--	--	--	75	5.3	6.4	2.0	9.0	<2.5	--
04/15/97	265.30	247.35	17.95	--	--	--	--	<50	<0.5	<0.5	<0.5	<0.5	<2.5	--
07/08/97	265.30	245.55	19.75	--	--	--	--	<50	<0.5	<0.5	<0.5	<0.5	<2.5	--
10/22/97	265.30	245.74	19.56	--	--	--	--	<50	<0.5	<0.5	<0.5	<0.5	<2.5	--

CONTINUED ON NEXT PAGE

Cumulative Table of Well Data and Analytical Results

Vertical Measurements are in feet.

Analytical results are in parts per billion (ppb)

DATE	Well	Ground	Depth	Total			Notes	TPH- Gasoline	Benzene	Toluene	Ethyl- Benzene	Xylene	MTBE	Organic Lead
	Head Elev.	Water Elev.	To Water	SPH Thickness	SPH Removed	SPH Removed								
C-11(CONT'D)														
01/12/98	265.30	246.97	18.33	--	--	--	--	<50	<0.5	<0.5	<0.5	<0.5	<2.5	--
04/21/98	265.30	248.62	16.68	--	--	--	--	<50	<0.5	<0.5	<0.5	<0.5	<2.5	--
07/08/98	265.30	246.76	18.54	--	--	--	--	<50	<0.5	0.58	<0.5	<0.5	<2.5	--
10/13/98	265.30	245.02	20.28	--	--	--	--	<50	<0.5	<0.5	<0.5	<0.5	<2.5	--
01/27/99	265.30	245.85	19.45	--	--	--	--	<50	<0.5	<0.5	<0.5	<0.5	<2.0	--

Cumulative Table of Well Data and Analytical Results

Vertical Measurements are in feet.

Analytical results are in parts per billion (ppb)

DATE	Well Head Elev.	Ground Water Elev.	Depth To Water	SPH Thickness	SPH Removed	Total SPH Removed	Notes	TPH-Gasoline	Benzene	Toluene	Ethyl-Benzene	Xylene	MTBE	Organic Lead
C-12														
03/07/90	269.66	254.74	14.92	--	--	--	--	--	--	--	--	--	--	--
03/09/90	269.66	--	--	--	--	--	--	1400	230	140	33	180	--	--
06/12/90	269.66	254.87	14.79	--	--	--	--	720	190	71	18	73	--	--
09/24/90	269.66	253.94	15.72	--	--	--	--	ND	1.1	ND	ND	0.6	--	--
12/20/90	269.66	254.40	15.26	--	--	--	--	810	210	26	8.2	23	--	--
03/27/91	269.66	257.55	12.11	--	--	--	--	2900	350	220	52	210	--	--
06/18/91	269.66	253.28	16.38	--	--	--	--	--	--	--	--	--	--	--
09/12/91	269.66	252.11	17.55	--	--	--	--	350	59	12	4.5	8.5	--	--
01/23/92	269.66	252.55	17.11	--	--	--	--	450	110	31	7.9	22	--	--
04/13/92	269.66	255.26	14.40	--	--	--	--	5000	1100	76	100	200	--	--
08/03/92	269.66	253.83	15.83	--	--	--	--	520	200	21	13	25	--	ND
10/22/92	269.66	253.52	16.14	--	--	--	--	1300	310	66	35	56	--	--
01/18/93	269.66	257.96	11.70	--	--	--	--	5600	1200	430	220	610	--	--
04/19/93	269.66	256.61	13.05	--	--	--	--	2000	600	99	96	170	--	--
07/21-22/93	269.66	256.82	12.84	--	--	--	--	540	95	36	18	56	--	--
10/25/93	269.66	255.63	14.03	--	--	--	--	350	90	29	20	50	--	--
01/21/94	269.66	255.51	14.15	--	--	--	--	450	73	18	14	37	--	--
04/18/94	269.66	256.71	12.95	--	--	--	--	370	70	21	12	39	--	--
07/06-07/94	269.66	257.35	12.31	--	--	--	--	840	200	35	28	66	--	--
10/07/94	269.66	256.31	13.35	--	--	--	--	830	85	29	17	63	--	--
01/11/95	269.66	258.43	11.23	--	--	--	--	2100	570	190	98	390	--	--
04/24/95	269.66	259.34	10.32	--	--	--	--	820	120	28	23	61	--	--
07/31/95	269.66	256.92	12.74	--	--	--	--	520	79	13	16	42	--	--
10/02/95	269.66	255.26	14.40	--	--	--	--	400	50	5.3	11	29	--	--
01/16/96	269.66	256.94	12.72	--	--	--	--	1900	490	32	60	120	<25	--
04/18/96	269.66	258.91	10.75	--	--	--	--	2900	640	54	100	190	68	--
07/22/96	269.66	256.46	13.20	--	--	--	--	730	150	13	26	75	9.5	--
10/10/96	269.66	255.95	13.71	--	--	--	--	270	58	4.4	7.7	31	<2.5	--
01/09/97	269.66	260.60	9.06	--	--	--	--	2900	550	67	94	300	63	--
04/15/97	269.66	258.13	11.53	--	--	--	--	2500	350	29	92	200	43	--
07/08/97	269.66	257.92	11.74	--	--	--	--	1400	190	17	54	120	21	--
10/22/97	269.66	258.78	10.88	--	--	--	--	2300	490	45	110	340	42	--

CONTINUED ON NEXT PAGE

Cumulative Table of Well Data and Analytical Results

Vertical Measurements are in feet.

Analytical results are in parts per billion (ppb)

DATE	Well	Ground	Depth	Total			Notes	TPH- Gasoline	Benzene	Toluene	Ethyl- Benzene	Xylene	MTBE	Organic Lead
	Head Elev.	Water Elev.	To Water	SPH Thickness	SPH Removed	SPH Removed								
C-12 (CONT'D)														
01/12/98	269.66	260.76	8.90	--	--	--	--	5000	840	89	220	610	<50	--
04/21/98	269.66	262.41	7.25	--	--	--	--	2400	410	39	79	270	130	--
07/08/98	269.66	258.95	10.71	--	--	--	--	<50	7.6	<0.5	2.0	2.9	<2.5	--
10/13/98	269.66	257.01	12.65	--	--	--	--	2600	460	34	120	240	11	--
01/27/99	269.66	257.41	12.25	--	--	--	--	96.9	6.88	<0.5	<0.5	<0.5	<2.0	--

Cumulative Table of Well Data and Analytical Results

Vertical Measurements are in feet.

Analytical results are in parts per billion (ppb)

DATE	Well Head Elev.	Ground Water Elev.	Depth To Water	SPH Thickness	SPH Removed	Total SPH Removed	Notes	Analytical results are in parts per billion (ppb)								
								TPH-Gasoline	Benzene	Toluene	Ethyl-Benzene	Xylene	MTBE	Organic Lead		
C-13																
03/07/90	284.32	273.14	11.18	--	--	--	--	--	--	--	--	--	--	--	--	--
03/09/90	284.32	--	--	--	--	--	--	ND	15	3.7	1.0	6.2	--	--	--	--
06/12/90	284.32	273.62	10.70	--	--	--	--	ND	2.6	ND	ND	ND	--	--	--	--
09/24/90	284.32	272.72	11.60	--	--	--	--	ND	2.4	ND	ND	ND	--	--	--	--
12/20/90	284.32	274.16	10.16	--	--	--	--	ND	1.6	ND	ND	ND	--	--	--	--
03/27/91	284.32	276.68	7.64	--	--	--	--	--	--	--	--	--	--	--	--	--
06/18/91	284.32	273.00	11.32	--	--	--	--	--	--	--	--	--	--	--	--	--
09/12/91	284.32	272.48	11.84	--	--	--	--	ND	ND	ND	ND	ND	--	--	--	--
01/23/92	284.32	273.77	10.55	--	--	--	--	--	--	--	--	--	--	--	--	--
04/13/92	284.32	273.36	10.96	--	--	--	--	ND	1.0	ND	ND	ND	--	--	--	--
08/03/92	284.32	273.42	10.90	--	--	--	--	ND	ND	ND	ND	ND	--	--	--	ND
10/22/92	284.32	273.14	11.18	--	--	--	--	--	--	--	--	--	--	--	--	--
01/18/93	284.32	276.92	7.40	--	--	--	--	290	54	10	5.4	12	--	--	--	--
04/19/93	284.32	275.39	8.93	--	--	--	--	--	--	--	--	--	--	--	--	--
07/21-22/93	284.32	273.57	10.75	--	--	--	--	ND	ND	ND	ND	ND	--	--	--	--
10/25/93	284.32	273.47	10.85	--	--	--	--	--	--	--	--	--	--	--	--	--
01/21/94	284.32	273.27	11.05	--	--	--	--	ND	ND	ND	ND	ND	--	--	--	--
04/18/94	284.32	273.61	10.71	--	--	--	--	--	--	--	--	--	--	--	--	--
07/06-07/94	284.32	273.67	10.65	--	--	--	--	ND	0.5	ND	ND	ND	--	--	--	--
10/07/94	284.32	273.24	11.08	--	--	--	--	--	--	--	--	--	--	--	--	--
01/11/95	284.32	278.94	5.38	--	--	--	Sampled bi-annually	120	15	<0.5	3.1	2.7	--	--	--	--
04/24/95	284.32	276.54	7.78	--	--	--	--	--	--	--	--	--	--	--	--	--
07/31/95	284.32	274.38	9.94	--	--	--	--	<50	<0.5	<0.5	<0.5	<0.5	--	--	--	--
10/02/95	284.32	273.74	10.58	--	--	--	--	--	--	--	--	--	--	--	--	--
01/16/96	284.32	274.52	9.80	--	--	--	--	<50	<0.5	<0.5	<0.5	<0.5	<2.5	--	--	--
04/18/96	284.32	276.57	7.75	--	--	--	--	--	--	--	--	--	--	--	--	--
07/22/96	284.32	274.82	9.50	--	--	--	--	59	18	<0.5	1.0	<0.5	<2.5	--	--	--
10/10/96	284.32	273.63	10.69	--	--	--	--	--	--	--	--	--	--	--	--	--
01/09/97	284.32	276.95	7.37	--	--	--	--	<50	0.60	<0.5	<0.5	<0.5	<2.5	--	--	--
04/15/97	284.32	275.63	8.69	--	--	--	--	--	--	--	--	--	--	--	--	--
07/08/97	284.32	276.12	8.20	--	--	--	Samples lost	--	--	--	--	--	--	--	--	--
07/15/97	284.32	276.02	8.30	--	--	--	--	<50	2.6	<0.5	<0.5	1.6	<2.5	--	--	--
10/22/97	284.32	276.79	7.53	--	--	--	--	--	--	--	--	--	--	--	--	--

CONTINUED ON NEXT PAGE

Cumulative Table of Well Data and Analytical Results

Vertical Measurements are in feet.

Analytical results are in parts per billion (ppb)

DATE	Well	Ground	Depth	Total			Notes	TPH- Gasoline	Benzene	Toluene	Ethyl- Benzene	Xylene	MTBE	Organic Lead
	Head Elev.	Water Elev.	To Water	SPH Thickness	SPH Removed	SPH Removed								
C-13														
01/12/98	284.32	278.38	5.94	--	--	--	--	<50	<0.5	<0.5	<0.5	<0.5	<2.5	--
04/21/98	284.32	277.35	6.97	--	--	--	--	--	--	--	--	--	--	--
07/08/98	284.32	274.45	9.87	--	--	--	--	<50	<0.5	<0.5	<0.5	<0.5	<2.5	--
10/13/98	284.32	273.51	10.81	--	--	--	--	--	--	--	--	--	--	--
01/27/99	284.32	273.06	11.26	--	--	--	--	<50	<0.5	<0.5	<0.5	<0.5	<2.0	--

Cumulative Table of Well Data and Analytical Results

Vertical Measurements are in feet.

Analytical results are in parts per billion (ppb)

DATE	Well Head Elev.	Ground Water Elev.	Depth To Water	SPH Thickness	SPH Removed	Total SPH Removed	Notes	Analytical results are in parts per billion (ppb)						
								TPH-Gasoline	Benzene	Toluene	Ethyl-Benzene	Xylene	MTBE	Organic Lead
C-14														
03/07/90	270.74	255.56	15.18	--	--	--	--	--	--	--	--	--	--	--
03/09/90	270.74	--	--	--	--	--	--	ND	ND	ND	ND	ND	--	--
06/12/90	270.74	257.32	13.42	--	--	--	--	ND	ND	ND	ND	ND	--	--
09/24/90	270.74	257.90	12.84	--	--	--	--	ND	ND	ND	ND	ND	--	--
12/20/90	270.74	254.02	16.72	--	--	--	--	ND	1.7	0.7	ND	0.7	--	--
03/27/91	270.74	262.74	8.00	--	--	--	--	ND	ND	ND	ND	1.3	--	--
06/18/91	270.74	255.53	15.21	--	--	--	--	--	--	--	--	--	--	--
09/12/91	270.74	255.13	15.61	--	--	--	--	ND	ND	ND	ND	ND	--	--
01/23/92	270.74	246.10	24.64	--	--	--	--	--	--	--	--	--	--	--
04/13/92	270.74	258.53	12.21	--	--	--	--	ND	ND	ND	ND	ND	--	--
08/03/92	270.74	256.10	14.64	--	--	--	--	ND	ND	ND	ND	ND	--	ND
10/22/92	270.74	253.80	16.94	--	--	--	--	--	--	--	--	--	--	--
01/18/93	270.74	265.64	5.10	--	--	--	--	ND	ND	ND	ND	ND	--	--
04/19/93	270.74	263.86	6.88	--	--	--	--	--	--	--	--	--	--	--
07/21-22/93	270.74	259.58	11.16	--	--	--	--	ND	ND	ND	ND	ND	--	--
10/25/93	270.74	256.87	13.87	--	--	--	--	--	--	--	--	--	--	--
01/21/94	270.74	255.42	15.32	--	--	--	--	ND	ND	ND	ND	ND	--	--
04/18/94	270.74	254.85	15.89	--	--	--	--	--	--	--	--	--	--	--
07/06-07/94	270.74	258.66	12.08	--	--	--	--	ND	ND	ND	ND	ND	--	--
10/07/94	270.74	255.45	15.29	--	--	--	--	--	--	--	--	--	--	--
01/11/95	270.74	266.94	3.80	--	--	--	Sampled bi-annually	<50	<0.5	<0.5	<0.5	<0.5	<0.5	--
04/24/95	270.74	265.68	5.06	--	--	--	--	--	--	--	--	--	--	--
07/31/95	270.74	260.34	10.40	--	--	--	--	<50	<0.5	<0.5	<0.5	<0.5	--	--
10/02/95	270.74	257.20	13.54	--	--	--	--	--	--	--	--	--	--	--
01/16/96	270.74	259.62	11.12	--	--	--	--	<50	<0.5	<0.5	<0.5	<0.5	<2.5	--
04/18/96	270.74	265.78	4.96	--	--	--	--	--	--	--	--	--	--	--
07/22/96	270.74	259.89	10.85	--	--	--	--	<50	<0.5	<0.5	<0.5	<0.5	<2.5	--
10/10/96	270.74	261.44	9.30	--	--	--	--	--	--	--	--	--	--	--
01/09/97	270.74	269.80	0.94	--	--	--	--	56	3.8	4.2	1.1	5.0	<2.5	--
04/15/97	270.74	263.59	7.15	--	--	--	--	--	--	--	--	--	--	--
07/08/97	270.74	261.44	9.30	--	--	--	--	<50	<0.5	<0.5	<0.5	<0.5	<2.5	--
10/22/97	270.74	261.17	9.57	--	--	--	--	--	--	--	--	--	--	--

CONTINUED ON NEXT PAGE

Cumulative Table of Well Data and Analytical Results

Vertical Measurements are in feet.

Analytical results are in parts per billion (ppb)

DATE	Well Head Elev.	Ground Water Elev.	Depth To Water	SPH Thickness	SPH Removed	Total SPH Removed	Notes	TPH-Gasoline	Benzene	Toluene	Ethyl-Benzene	Xylene	MTBE	Organic Lead
C-14 (CONT'D)														
01/12/98	270.74	268.45	2.29	--	--	--	--	<50	<0.5	<0.5	<0.5	<0.5	<2.5	--
04/21/98	270.74	270.70	0.04	--	--	--	--	--	--	--	--	--	--	--
07/08/98	270.74	264.85	5.89	--	--	--	--	<50	<0.5	<0.5	<0.5	<0.5	<2.5	--
10/13/98	270.74	260.38	10.36	--	--	--	--	--	--	--	--	--	--	--
01/27/99	270.74	263.42	7.32	--	--	--	--	<50	<0.5	<0.5	<0.5	<0.5	<2.0	--

Cumulative Table of Well Data and Analytical Results

Vertical Measurements are in feet.

Analytical results are in parts per billion (ppb)

DATE	Well Head Elev.	Ground Water Elev.	Depth To Water	SPH Thickness	SPH Removed	Total SPH Removed	Notes	TPH-Gasoline	Benzene	Toluene	Ethyl-Benzene	Xylene	MTBE	Organic Lead
C-15														
03/07/90	246.15	235.05	11.10	--	--	--	--	--	--	--	--	--	--	--
03/09/90	246.15	--	--	--	--	--	--	410	ND	1.4	0.5	0.6	--	--
06/12/90	246.15	235.37	10.78	--	--	--	--	420	11	ND	ND	ND	--	--
09/24/90	246.15	235.22	10.93	--	--	--	--	430	ND	1.5	ND	ND	--	--
12/20/90	246.15	235.07	11.08	--	--	--	--	300	1.3	1.1	0.6	1.5	--	--
03/27/91	246.15	237.65	8.50	--	--	--	--	520	4.6	1.1	ND	1.0	--	--
06/18/91	246.15	235.32	10.83	--	--	--	--	290	ND	1.1	ND	ND	--	--
06/18/91	246.15	235.32	10.83	--	--	--	Duplicate	320	ND	1.3	ND	ND	--	--
09/12/91	246.15	235.10	11.05	--	--	--	--	330	ND	0.9	ND	ND	--	--
01/23/92	246.15	235.35	10.80	--	--	--	--	210	ND	0.6	ND	ND	--	--
01/23/92	246.15	235.35	10.80	--	--	--	Duplicate	190	1.2	0.8	ND	ND	--	--
04/13/92	246.15	236.57	9.58	--	--	--	--	430	1.8	ND	ND	ND	--	--
08/03/92	246.15	234.94	11.21	--	--	--	--	640	ND	2.1	0.7	1.3	--	ND
10/22/92	246.15	234.50	11.65	--	--	--	--	420	ND	ND	ND	0.8	--	--
01/18/93	246.15	239.03	7.12	--	--	--	--	640	7.0	3.0	2.9	6.7	--	--
04/19/93	246.15	237.22	8.93	--	--	--	--	260	6.0	2.0	0.7	ND	--	--
07/21-22/93	246.15	236.37	9.78	--	--	--	--	580	ND	8.0	ND	0.6	--	--
10/25/93	246.15	236.41	9.74	--	--	--	--	240	ND	12	ND	0.6	--	--
01/21/94	246.15	235.78	10.37	--	--	--	--	420	0.6	ND	0.6	ND	--	--
04/18/94	246.15	236.19	9.96	--	--	--	--	550	1.0	4.6	0.6	ND	--	--
07/06-07/94	246.15	235.92	10.23	--	--	--	--	660	0.7	ND	ND	0.7	--	--
10/07/94	246.15	235.47	10.68	--	--	--	--	440	13	0.8	ND	1.2	--	--
01/11/95	246.15	238.84	7.31	--	--	--	--	750	2.5	<0.5	<0.5	0.6	--	--
04/24/95	246.15	237.41	8.74	--	--	--	--	850	<0.5	<0.5	<0.5	<0.5	--	--
07/31/95	246.15	235.41	10.74	--	--	--	--	640	<0.5	1.6	<0.5	<0.5	--	--
10/02/95	246.15	234.83	11.32	--	--	--	--	560	<0.5	<0.5	<0.5	<0.5	--	--
01/16/96	246.15	235.58	10.57	--	--	--	--	740	<0.5	<0.5	<0.5	<0.5	<2.5	--
04/18/96	246.15	237.55	8.60	--	--	--	--	760	<0.5	<0.5	<0.5	<0.5	<2.5	--
07/22/96	246.15	235.57	10.58	--	--	--	--	690	<0.5	1.6	<0.5	<0.5	7.9	--
10/10/96	246.15	234.97	11.18	--	--	--	--	870	7.0	2.1	<0.5	<0.5	11	--
01/09/97	246.15	238.83	7.32	--	--	--	--	370	2.6	1.1	<0.5	<0.5	4.6	--
04/15/97	246.15	235.76	10.39	--	--	--	--	510	22	<0.5	<0.5	<0.5	<2.5	--
07/08/97	246.15	235.68	10.47	--	--	--	--	490	71	6.8	22	48	7.0	--
10/22/97	246.15	235.01	11.14	--	--	--	--	790	2.3	1.8	<0.5	<0.5	5.1	--

CONTINUED ON NEXT PAGE

Cumulative Table of Well Data and Analytical Results

Vertical Measurements are in feet.

Analytical results are in parts per billion (ppb)

DATE	Well Head Elev.	Ground Water Elev.	Depth To Water	SPH Thickness	SPH Removed	Total SPH Removed	Notes	TPH-Gasoline	Benzene	Toluene	Ethyl-Benzene	Xylene	MTBE	Organic Lead
C-15 (CONT'D)														
01/12/98	246.15	238.17	7.98	--	--	--	--	400	13	<1.0	<1.0	<1.0	<5.0	--
04/21/98	246.15	238.05	8.10	--	--	--	--	770	<0.5	0.60	0.82	0.51	<2.5	--
07/08/98	246.15	235.65	10.50	--	--	--	--	540	13	<0.5	<0.5	<0.5	<2.5	--
10/13/98	246.15	234.95	11.20	--	--	--	--	<50	<0.5	<0.5	<0.5	0.54	<2.5	--
01/27/99	246.15	235.53	10.62	--	--	--	--	769	<0.5	1.88	0.675	<0.5	4.35	--

Cumulative Table of Well Data and Analytical Results

Vertical Measurements are in feet.

Analytical results are in parts per billion (ppb)

DATE	Well	Ground	Depth	Total			Notes	TPH- Gasoline	Benzene	Toluene	Ethyl- Benzene	Xylene	MTBE	Organic Lead
	Head Elev.	Water Elev.	To Water	SPH Thickness	SPH Removed	SPH Removed								
C-16														
03/07/90	246.69	228.19	18.50	--	--	--	--	--	--	--	--	--	--	--
03/09/90	246.69	--	--	--	--	--	--	ND	ND	ND	ND	ND	--	--
06/12/90	246.69	235.27	11.42	--	--	--	--	ND	ND	ND	ND	ND	--	--
09/24/90	246.69	235.30	11.39	--	--	--	--	ND	ND	ND	ND	ND	--	--
12/20/90	246.69	235.12	11.57	--	--	--	--	ND	ND	ND	ND	0.7	--	--
03/27/91	246.69	237.93	8.76	--	--	--	--	ND	ND	ND	ND	1.3	--	--
03/27/91	246.69	237.93	8.76	--	--	--	Duplicate	ND	ND	ND	ND	1.2	--	--
06/18/91	246.69	235.51	11.18	--	--	--	--	ND	ND	ND	ND	ND	--	--
09/12/91	246.69	234.74	11.95	--	--	--	--	ND	ND	ND	ND	ND	--	--
01/23/92	246.69	234.28	12.41	--	--	--	--	ND	ND	ND	ND	ND	--	--
04/13/92	246.69	236.00	10.69	--	--	--	--	ND	ND	ND	ND	ND	--	--
08/03/92	246.69	234.49	12.20	--	--	--	--	ND	ND	ND	ND	ND	--	ND
10/22/92	246.69	234.09	12.60	--	--	--	--	ND	ND	ND	ND	ND	--	--
01/18/93	246.69	237.69	9.00	--	--	--	--	ND	ND	ND	ND	ND	--	--
04/19/93	246.69	236.80	9.89	--	--	--	--	ND	ND	ND	ND	ND	--	--
07/21-22/93	246.69	236.44	10.25	--	--	--	--	ND	ND	ND	ND	ND	--	--
10/25/93	246.69	235.73	10.96	--	--	--	--	ND	ND	ND	ND	ND	--	--
01/21/94	246.69	234.93	11.76	--	--	--	--	ND	ND	0.7	ND	1.0	--	--
04/18/94	246.69	235.47	11.22	--	--	--	--	ND	ND	ND	ND	ND	--	--
07/06-07/94	246.69	235.32	11.37	--	--	--	--	ND	ND	ND	ND	ND	--	--
10/07/94	246.69	234.30	12.39	--	--	--	--	ND	ND	ND	ND	ND	--	--
01/11/95	246.69	237.73	8.96	--	--	--	--	<50	<0.5	<0.5	<0.5	<0.5	--	--
04/24/95	246.69	236.31	10.38	--	--	--	--	<50	<0.5	<0.5	<0.5	<0.5	--	--
07/31/95	246.69	235.37	11.32	--	--	--	--	<50	<0.5	<0.5	<0.5	<0.5	--	--
10/02/95	246.69	234.29	12.40	--	--	--	--	<50	<0.5	<0.5	<0.5	<0.5	--	--
01/16/96	246.69	235.15	11.54	--	--	--	--	<50	<0.5	<0.5	<0.5	<0.5	<2.5	--
04/18/96	246.69	236.09	10.60	--	--	--	--	<50	<0.5	<0.5	<0.5	<0.5	<2.5	--
07/22/96	246.69	235.12	11.57	--	--	--	--	<50	<0.5	<0.5	<0.5	<0.5	<2.5	--
10/10/96	246.69	234.25	12.44	--	--	--	--	<50	<0.5	<0.5	<0.5	<0.5	<2.5	--
01/09/97	246.69	237.16	9.53	--	--	--	--	<50	<0.5	<0.5	<0.5	<0.5	<2.5	--
04/15/97	246.69	234.66	12.03	--	--	--	--	<50	<0.5	<0.5	<0.5	<0.5	<2.5	--
07/08/97	246.69	234.51	12.18	--	--	--	--	<50	<0.5	<0.5	<0.5	<0.5	<2.5	--
10/22/97	246.69	233.94	12.75	--	--	--	--	<50	<0.5	<0.5	<0.5	<0.5	<2.5	--

CONTINUED ON NEXT PAGE

Cumulative Table of Well Data and Analytical Results

Vertical Measurements are in feet.

Analytical results are in parts per billion (ppb)

DATE	Well	Ground	Depth	Total			Notes	TPH- Gasoline	Benzene	Toluene	Ethyl- Benzene	Xylene	MTBE	Organic Lead
	Head Elev.	Water Elev.	To Water	SPH Thickness	SPH Removed	SPH Removed								
C-16 (CONT'D)														
01/12/98	246.69	236.34	10.35	--	--	--	--	<50	<0.5	<0.5	<0.5	<0.5	<2.5	--
04/21/98	246.69	236.06	10.63	--	--	--	--	<50	<0.5	<0.5	<0.5	<0.5	<2.5	--
07/08/98	246.69	234.62	12.07	--	--	--	--	<50	<0.5	0.51	<0.5	<0.5	<2.5	--
10/13/98	246.69	233.94	12.75	--	--	--	--	<50	<0.5	<0.5	<0.5	<0.5	<2.5	--
01/27/99	246.69	234.58	12.11	--	--	--	--	<50	<0.5	<0.5	<0.5	<0.5	<2.0	--

Cumulative Table of Well Data and Analytical Results

Vertical Measurements are in feet.

Analytical results are in parts per billion (ppb)

DATE	Well	Ground	Depth	Total			Notes	TPH- Gasoline	Benzene	Toluene	Ethyl- Benzene	Xylene	MTBE	Organic Lead
	Head Elev.	Water Elev.	To Water	SPH Thickness	SPH Removed	SPH Removed								
RW														
12/04/89	--	--	--	--	--	--	--	62,000	29,000	1700	1800	8800	--	--
03/07/90	274.52	256.02	18.50	--	--	--	--	--	--	--	--	--	--	--
06/12/90	274.52	256.03	18.49	--	--	--	--	31,000	15,000	2000	560	3100	--	--
09/24/90	274.52	--	--	--	--	--	--	--	--	--	--	--	--	--
12/20/90	274.52	--	--	--	--	--	--	ND	0.5	ND	ND	1.2	--	--
03/27/91	274.52	--	--	--	--	--	--	--	--	--	--	--	--	--
06/18/91	274.52	--	--	--	--	--	--	--	--	--	--	--	--	--
09/12/91	274.52	--	--	--	--	--	Insufficient water	--	--	--	--	--	--	--
01/23/92	274.52	--	--	--	--	--	Insufficient water	--	--	--	--	--	--	--
04/13/92	274.52	--	--	--	--	--	Insufficient water	--	--	--	--	--	--	--
08/03/92	274.52	--	--	--	--	--	Insufficient water	--	--	--	--	--	--	--
10/22/92	274.52	--	--	--	--	--	Insufficient water	--	--	--	--	--	--	--
01/18/93	274.52	--	--	--	--	--	Insufficient water	--	--	--	--	--	--	--
04/19/93	274.52	--	--	--	--	--	Insufficient water	--	--	--	--	--	--	--
07/21-22/93	274.52	--	--	--	--	--	Insufficient water	--	--	--	--	--	--	--
10/25/93	274.52	--	--	--	--	--	--	--	--	--	--	--	--	--
01/21/94	274.52	--	--	--	--	--	--	--	--	--	--	--	--	--
04/18/94	274.52	--	--	--	--	--	--	--	--	--	--	--	--	--
07/06-07/94	274.52	--	--	--	--	--	--	--	--	--	--	--	--	--
10/07/94	274.52	--	--	--	--	--	--	--	--	--	--	--	--	--
10/24/95	274.52	256.63	17.89	--	--	--	--	37,000	11,000	380	1100	3000	--	--
01/16/96	274.52	259.09	15.43	--	--	--	--	59,000	17,000	660	1600	5400	<1000	--

NO LONGER MONITORED OR SAMPLED

Cumulative Table of Well Data and Analytical Results

Vertical Measurements are in feet.

Analytical results are in parts per billion (ppb)

DATE	Well Head Elev.	Ground Water Elev.	Depth To Water	SPH Thickness	SPH Removed	Total SPH Removed	Notes	TPH-Gasoline	Benzene	Toluene	Ethyl-Benzene	Xylene	MTBE	Organic Lead
TRIP BLANK														
01/11/95	--	--	--	--	--	--	--	<50	<0.5	<0.5	<0.5	<0.5	--	--
04/24/95	--	--	--	--	--	--	--	<50	<0.5	<0.5	<0.5	<0.5	--	--
07/31/95	--	--	--	--	--	--	--	<50	<0.5	<0.5	<0.5	<0.5	--	--
10/02/95	--	--	--	--	--	--	--	<50	<0.5	<0.5	<0.5	<0.5	--	--
01/16/96	--	--	--	--	--	--	--	<50	<0.5	<0.5	<0.5	<0.5	--	--
04/18/96	--	--	--	--	--	--	--	<50	<0.5	<0.5	<0.5	<0.5	--	--
07/22/96	--	--	--	--	--	--	--	<50	<0.5	<0.5	<0.5	<0.5	--	--
10/10/96	--	--	--	--	--	--	--	<50	<0.5	<0.5	<0.5	<0.5	--	--
01/09/97	--	--	--	--	--	--	--	<50	<0.5	<0.5	<0.5	<0.5	<2.5	--
04/15/97	--	--	--	--	--	--	--	<50	<0.5	<0.5	<0.5	<0.5	<2.5	--
07/08/97	--	--	--	--	--	--	--	<50	<0.5	<0.5	<0.5	<0.5	<2.5	--
07/15/97	--	--	--	--	--	--	--	<50	<0.5	<0.5	<0.5	<0.5	<2.5	--
10/22/97	--	--	--	--	--	--	--	<50	<0.5	<0.5	<0.5	<0.5	<2.5	--
01/12/98	--	--	--	--	--	--	--	<50	<0.5	<0.5	<0.5	<0.5	<2.5	--
04/21/98	--	--	--	--	--	--	--	<50	<0.5	<0.5	<0.5	<0.5	<2.5	--
07/08/98	--	--	--	--	--	--	--	<50	<0.5	<0.5	<0.5	<0.5	<2.5	--
10/13/98	--	--	--	--	--	--	--	<50	<0.5	<0.5	<0.5	<0.5	<2.5	--
01/27/99	--	--	--	--	--	--	--	<50	<0.5	<0.5	<0.5	<0.5	<2.0	--

* See Table of Additional Analyses.

Cumulative Table of Well Data and Analytical Results

ADDITIONAL ANALYSES

Analytical values are in parts per billion (ppb)

DATE	Notes	Ethanol	t- Butanol	MTBE	DIPE	ETBE	TAME
C-1							
10/13/98	--	<10,000	<2000	<40	<40	<40	<40

Note: Blaine Tech Services, Inc. began routine monitoring of the groundwater wells at this site on November 1, 1994.
Earlier field data and analytical results are drawn from the November 4, 1994 Groundwater Technology, Inc. report.

ABBREVIATIONS:

TPH = Total Petroleum Hydrocarbons

ND = Not detected at or above the minimum quantitation limit. See laboratory reports for minimum quantitation limits.

MTBE = Methyl t-butyl ether

DIPE = Di-Isopropyl Ether

ETBE = Ethyl t-Butyl Ether

TAME = t-Amyl Methyl Ether

Analytical Appendix



Sequoia
Analytical

680 Chesapeake Drive
404 N. Wiget Lane
819 Striker Avenue, Suite 8
1455 McDowell Blvd. North, Ste. D

Redwood City, CA 94063
Walnut Creek, CA 94598
Sacramento, CA 95834
Petaluma, CA 94954

(650) 364-9600
(925) 988-9600
(916) 921-9600
(707) 792-1865

FAX (650) 364-9233
FAX (925) 988-9673
FAX (916) 921-0100
FAX (707) 792-0342

February 12, 1999

Christine Lillie
Blaine Tech/Chevron
1680 Rogers Ave.
San Jose, CA 95112

RE: Chevron/P902081

Dear Christine Lillie

Enclosed are the results of analyses for sample(s) received by the laboratory on January 29, 1999. If you have any questions concerning this report, please feel free to contact me.

Sincerely,

Matt Sakai
Project Manager

CA ELAP Certificate Number 2245





Blaine Tech/Chevron
1680 Rogers Ave.
San Jose, CA 95112

Project: Chevron
Project Number: 9-5607/990127-P1
Project Manager: Christine Lillie

Sampled: 1/27/99
Received: 1/29/99
Reported: 2/12/99

ANALYTICAL REPORT FOR P902081

Sample Description	Laboratory Sample Number	Sample Matrix	Date Sampled
C-1	P902081-01	Water	1/27/99
C-2	P902081-02	Water	1/27/99
C-3	P902081-03	Water	1/27/99
C-5	P902081-04	Water	1/27/99
C-6	P902081-05	Water	1/27/99
C-7	P902081-06	Water	1/27/99
C-8	P902081-07	Water	1/27/99
C-9	P902081-08	Water	1/27/99
C-10A	P902081-09	Water	1/27/99
C-10B	P902081-10	Water	1/27/99
C-11	P902081-11	Water	1/27/99
C-12	P902081-12	Water	1/27/99
C-13	P902081-13	Water	1/27/99
C-14	P902081-14	Water	1/27/99
C-15	P902081-15	Water	1/27/99
C-16	P902081-16	Water	1/27/99
TB	P902081-17	Water	1/27/99





Blaine Tech/Chevron 1680 Rogers Ave. San Jose, CA 95112	Project: Chevron Project Number: 9-5607/990127-P1 Project Manager: Christine Lillie	Sampled: 1/27/99 Received: 1/29/99 Reported: 2/12/99
---	---	--

**Total Petroleum Hydrocarbons as Gasoline and BTEX by EPA 8015M/8020M
Sequoia Analytical - Petaluma**

Analyte	Batch Number	Date Prepared	Date Analyzed	Surrogate Limits	Reporting Limit	Result	Units	Notes*
C-1				P902081-01			Water	
Gasoline	9020249	2/10/99	2/10/99		100	1220	ug/l	
Benzene	"	"	"		1.00	126	"	
Toluene	"	"	"		1.00	21.9	"	
Ethylbenzene	"	"	"		1.00	1.60	"	
Xylenes (total)	"	"	"		1.00	163	"	
Methyl tert-butyl ether	"	"	"		4.00	10.3	"	
Surrogate: a,a,a-Trifluorotoluene	"	"	"	65.0-135		104	%	
Surrogate: 4-Bromofluorobenzene	"	"	"	65.0-135		97.0	"	
C-2				P902081-02			Water	
Gasoline	9020249	2/10/99	2/10/99		50.0	153	ug/l	
Benzene	"	"	"		0.500	4.83	"	
Toluene	"	"	"		0.500	0.628	"	
Ethylbenzene	"	"	"		0.500	ND	"	
Xylenes (total)	"	"	"		0.500	ND	"	
Methyl tert-butyl ether	"	"	"		2.00	4.73	"	
Surrogate: a,a,a-Trifluorotoluene	"	"	"	65.0-135		112	%	
Surrogate: 4-Bromofluorobenzene	"	"	"	65.0-135		79.3	"	
C-3				P902081-03			Water	
Gasoline	9020249	2/10/99	2/10/99		5000	57100	ug/l	
Benzene	"	"	"		50.0	18400	"	
Toluene	"	"	"		50.0	2440	"	
Ethylbenzene	"	"	"		50.0	1660	"	
Xylenes (total)	"	"	"		50.0	8690	"	
Methyl tert-butyl ether	"	"	"		200	ND	"	
Surrogate: a,a,a-Trifluorotoluene	"	"	"	65.0-135		98.7	%	
Surrogate: 4-Bromofluorobenzene	"	"	"	65.0-135		94.7	"	
C-5				P902081-04			Water	
Gasoline	9020249	2/10/99	2/10/99		50.0	ND	ug/l	
Benzene	"	"	"		0.500	ND	"	
Toluene	"	"	"		0.500	ND	"	
Ethylbenzene	"	"	"		0.500	ND	"	
Xylenes (total)	"	"	"		0.500	ND	"	
Methyl tert-butyl ether	"	"	"		2.00	ND	"	
Surrogate: a,a,a-Trifluorotoluene	"	"	"	65.0-135		102	%	
Surrogate: 4-Bromofluorobenzene	"	"	"	65.0-135		94.3	"	
C-6				P902081-05			Water	
Gasoline	9020249	2/10/99	2/10/99		1000	16000	ug/l	





Blaine Tech/Chevron 1680 Rogers Ave. San Jose, CA 95112	Project: Chevron Project Number: 9-5607/990127-P1 Project Manager: Christine Lillie	Sampled: 1/27/99 Received: 1/29/99 Reported: 2/12/99
---	---	--

**Total Petroleum Hydrocarbons as Gasoline and BTEX by EPA 8015M/8020M
Sequoia Analytical - Petaluma**

Analyte	Batch Number	Date Prepared	Date Analyzed	Surrogate Limits	Reporting Limit	Result	Units	Notes*
C-6 (continued)		P902081-05					Water	
Benzene	9020249	2/10/99	2/10/99		10.0	4440	ug/l	
Toluene	"	"	"		10.0	132	"	
Ethylbenzene	"	"	"		10.0	688	"	
Xylenes (total)	"	"	"		10.0	1290	"	
Methyl tert-butyl ether	"	"	"		40.0	190	"	
Surrogate: a,a,a-Trifluorotoluene	"	"	"	65.0-135		103	%	
Surrogate: 4-Bromofluorobenzene	"	"	"	65.0-135		94.0	"	
C-7		P902081-06					Water	
Gasoline	9020249	2/10/99	2/10/99		50.0	ND	ug/l	
Benzene	"	"	"		0.500	ND	"	
Toluene	"	"	"		0.500	ND	"	
Ethylbenzene	"	"	"		0.500	ND	"	
Xylenes (total)	"	"	"		0.500	ND	"	
Methyl tert-butyl ether	"	"	"		2.00	ND	"	
Surrogate: a,a,a-Trifluorotoluene	"	"	"	65.0-135		98.3	%	
Surrogate: 4-Bromofluorobenzene	"	"	"	65.0-135		93.3	"	
C-8		P902081-07					Water	
Gasoline	9020249	2/10/99	2/10/99		50.0	ND	ug/l	
Benzene	"	"	"		0.500	ND	"	
Toluene	"	"	"		0.500	ND	"	
Ethylbenzene	"	"	"		0.500	ND	"	
Xylenes (total)	"	"	"		0.500	ND	"	
Methyl tert-butyl ether	"	"	"		2.00	ND	"	
Surrogate: a,a,a-Trifluorotoluene	"	"	"	65.0-135		101	%	
Surrogate: 4-Bromofluorobenzene	"	"	"	65.0-135		91.7	"	
C-9		P902081-08					Water	
Gasoline	9020249	2/10/99	2/10/99		1000	12100	ug/l	
Benzene	"	"	"		10.0	3490	"	
Toluene	"	"	"		10.0	249	"	
Ethylbenzene	"	"	"		10.0	654	"	
Xylenes (total)	"	"	"		10.0	1260	"	
Methyl tert-butyl ether	"	"	"		40.0	131	"	
Surrogate: a,a,a-Trifluorotoluene	"	"	"	65.0-135		101	%	
Surrogate: 4-Bromofluorobenzene	"	"	"	65.0-135		91.7	"	
C-10A		P902081-09					Water	
Gasoline	9020249	2/10/99	2/10/99		50.0	79.2	ug/l	
Benzene	"	"	"		0.500	ND	"	





Blaine Tech/Chevron 1680 Rogers Ave. San Jose, CA 95112	Project: Chevron Project Number: 9-5607/990127-P1 Project Manager: Christine Lillie	Sampled: 1/27/99 Received: 1/29/99 Reported: 2/12/99
---	---	--

**Total Petroleum Hydrocarbons as Gasoline and BTEX by EPA 8015M/8020M
Sequoia Analytical - Petaluma**

Analyte	Batch Number	Date Prepared	Date Analyzed	Surrogate Limits	Reporting Limit	Result	Units	Notes*
C-10A (continued)				P902081-09			Water	
Toluene	9020249	2/10/99	2/10/99		0.500	ND	ug/l	
Ethylbenzene	"	"	"		0.500	ND	"	
Xylenes (total)	"	"	"		0.500	ND	"	
Methyl tert-butyl ether	"	"	"		2.00	ND	"	
Surrogate: a,a,a-Trifluorotoluene	"	"	"	65.0-135		93.7	%	
Surrogate: 4-Bromofluorobenzene	"	"	"	65.0-135		89.7	"	
C-10B				P902081-10			Water	
Gasoline	9020249	2/10/99	2/10/99		50.0	ND	ug/l	
Benzene	"	"	"		0.500	ND	"	
Toluene	"	"	"		0.500	ND	"	
Ethylbenzene	"	"	"		0.500	ND	"	
Xylenes (total)	"	"	"		0.500	ND	"	
Methyl tert-butyl ether	"	"	"		2.00	ND	"	
Surrogate: a,a,a-Trifluorotoluene	"	"	"	65.0-135		99.7	%	
Surrogate: 4-Bromofluorobenzene	"	"	"	65.0-135		93.3	"	
C-11				P902081-11			Water	
Gasoline	9020249	2/10/99	2/10/99		50.0	ND	ug/l	
Benzene	"	"	"		0.500	ND	"	
Toluene	"	"	"		0.500	ND	"	
Ethylbenzene	"	"	"		0.500	ND	"	
Xylenes (total)	"	"	"		0.500	ND	"	
Methyl tert-butyl ether	"	"	"		2.00	ND	"	
Surrogate: a,a,a-Trifluorotoluene	"	"	"	65.0-135		101	%	
Surrogate: 4-Bromofluorobenzene	"	"	"	65.0-135		96.3	"	
C-12				P902081-12			Water	
Gasoline	9020249	2/10/99	2/10/99		50.0	96.9	ug/l	
Benzene	"	"	"		0.500	6.88	"	
Toluene	"	"	"		0.500	ND	"	
Ethylbenzene	"	"	"		0.500	ND	"	
Xylenes (total)	"	"	"		0.500	ND	"	
Methyl tert-butyl ether	"	"	"		2.00	ND	"	
Surrogate: a,a,a-Trifluorotoluene	"	"	"	65.0-135		101	%	
Surrogate: 4-Bromofluorobenzene	"	"	"	65.0-135		93.3	"	
C-13				P902081-13			Water	
Gasoline	9020249	2/10/99	2/10/99		50.0	ND	ug/l	
Benzene	"	"	"		0.500	ND	"	
Toluene	"	"	"		0.500	ND	"	





Blaine Tech/Chevron 1680 Rogers Ave. San Jose, CA 95112	Project: Chevron Project Number: 9-5607/990127-P1 Project Manager: Christine Lillie	Sampled: 1/27/99 Received: 1/29/99 Reported: 2/12/99
---	---	--

**Total Petroleum Hydrocarbons as Gasoline and BTEX by EPA 8015M/8020M
Sequoia Analytical - Petaluma**

Analyte	Batch Number	Date Prepared	Date Analyzed	Surrogate Limits	Reporting Limit	Result	Units	Notes*
C-13 (continued)				<u>P902081-13</u>			<u>Water</u>	
Ethylbenzene	9020249	2/10/99	2/10/99		0.500	ND	ug/l	
Xylenes (total)	"	"	"		0.500	ND	"	
Methyl tert-butyl ether	"	"	"		2.00	ND	"	
Surrogate: a,a,a-Trifluorotoluene	"	"	"	65.0-135		101	%	
Surrogate: 4-Bromofluorobenzene	"	"	"	65.0-135		94.7	"	
C-14				<u>P902081-14</u>			<u>Water</u>	
Gasoline	9020249	2/10/99	2/10/99		50.0	ND	ug/l	
Benzene	"	"	"		0.500	ND	"	
Toluene	"	"	"		0.500	ND	"	
Ethylbenzene	"	"	"		0.500	ND	"	
Xylenes (total)	"	"	"		0.500	ND	"	
Methyl tert-butyl ether	"	"	"		2.00	ND	"	
Surrogate: a,a,a-Trifluorotoluene	"	"	"	65.0-135		96.7	%	
Surrogate: 4-Bromofluorobenzene	"	"	"	65.0-135		85.3	"	
C-15				<u>P902081-15</u>			<u>Water</u>	
Gasoline	9020248	2/10/99	2/10/99		50.0	769	ug/l	
Benzene	"	"	"		0.500	ND	"	
Toluene	"	"	"		0.500	1.88	"	
Ethylbenzene	"	"	"		0.500	0.675	"	
Xylenes (total)	"	"	"		0.500	ND	"	
Methyl tert-butyl ether	"	"	"		2.00	4.35	"	
Surrogate: a,a,a-Trifluorotoluene	"	"	"	65.0-135		96.3	%	
Surrogate: 4-Bromofluorobenzene	"	"	"	65.0-135		93.0	"	
C-16				<u>P902081-16</u>			<u>Water</u>	
Gasoline	9020248	2/10/99	2/10/99		50.0	ND	ug/l	
Benzene	"	"	"		0.500	ND	"	
Toluene	"	"	"		0.500	ND	"	
Ethylbenzene	"	"	"		0.500	ND	"	
Xylenes (total)	"	"	"		0.500	ND	"	
Methyl tert-butyl ether	"	"	"		2.00	ND	"	
Surrogate: a,a,a-Trifluorotoluene	"	"	"	65.0-135		99.3	%	
Surrogate: 4-Bromofluorobenzene	"	"	"	65.0-135		93.3	"	
TB				<u>P902081-17</u>			<u>Water</u>	
Gasoline	9020248	2/10/99	2/11/99		50.0	ND	ug/l	
Benzene	"	"	"		0.500	ND	"	
Toluene	"	"	"		0.500	ND	"	
Ethylbenzene	"	"	"		0.500	ND	"	





**Sequoia
Analytical**

680 Chesapeake Drive
404 N. Wiget Lane
819 Striker Avenue, Suite B
1455 McDowell Blvd. North, Ste. D

Redwood City, CA 94063
Walnut Creek, CA 94598
Sacramento, CA 95834
Petaluma, CA 94954

(650) 364-9600
(925) 988-9600
(916) 921-9600
(707) 792-1865

FAX (650) 364-9233
FAX (925) 988-9673
FAX (916) 921-0100
FAX (707) 792-0342

Blaine Tech/Chevron 1680 Rogers Ave. San Jose, CA 95112	Project: Chevron Project Number: 9-5607/990127-P1 Project Manager: Christine Lillie	Sampled: 1/27/99 Received: 1/29/99 Reported: 2/12/99
---	---	--

**Total Petroleum Hydrocarbons as Gasoline and BTEX by EPA 8015M/8020M
Sequoia Analytical - Petaluma**

Analyte	Batch Number	Date Prepared	Date Analyzed	Surrogate Limits	Reporting Limit	Result	Units	Notes*
TB (continued)				<u>P902081-17</u>			<u>Water</u>	
Xylenes (total)	9020248	2/10/99	2/11/99		0.500	ND	ug/l	
Methyl tert-butyl ether	"	"	"		2.00	ND	"	
Surrogate: a,a,a-Trifluorotoluene	"	"	"	65.0-135		94.7	%	
Surrogate: 4-Bromofluorobenzene	"	"	"	65.0-135		90.7	"	





Blaine Tech/Chevron 1680 Rogers Ave. San Jose, CA 95112	Project: Chevron Project Number: 9-5607/990127-P1 Project Manager: Christine Lillie	Sampled: 1/27/99 Received: 1/29/99 Reported: 2/12/99
---	---	--

**Total Petroleum Hydrocarbons as Gasoline and BTEX by EPA 8015M/8020M/Quality Control
Sequoia Analytical - Petaluma**

Analyte	Date Analyzed	Spike Level	Sample Result	QC Result	Units	Reporting Limit Recov. Limits	Recov. %	RPD Limit	RPD %	Notes*
Batch: 9020248		Date Prepared: 2/10/99		Extraction Method: EPA 5030 waters						
Blank		9020248-BLK1								
Gasoline	2/10/99			ND	ug/l	50.0				
Benzene	"			ND	"	0.500				
Toluene	"			ND	"	0.500				
Ethylbenzene	"			ND	"	0.500				
Xylenes (total)	"			ND	"	0.500				
Methyl tert-butyl ether	"			ND	"	2.00				
Surrogate: a,a,a-Trifluorotoluene	"	300		302	"	65.0-135	101			
Surrogate: 4-Bromofluorobenzene	"	300		267	"	65.0-135	89.0			
LCS		9020248-BS1								
Gasoline	2/10/99	1000		933	ug/l	65.0-135	93.3			
Surrogate: 4-Bromofluorobenzene	"	300		267	"	65.0-135	89.0			
Matrix Spike		9020248-MS1		P902007-01						
Gasoline	2/10/99	1000	ND	1050	ug/l	65.0-135	105			
Surrogate: 4-Bromofluorobenzene	"	300		269	"	65.0-135	89.7			
Matrix Spike Dup		9020248-MSD1		P902007-01						
Gasoline	2/10/99	1000	ND	1020	ug/l	65.0-135	102	20.0	2.90	
Surrogate: 4-Bromofluorobenzene	"	300		262	"	65.0-135	87.3			
Batch: 9020249		Date Prepared: 2/10/99		Extraction Method: EPA 5030 waters						
Blank		9020249-BLK1								
Gasoline	2/10/99			ND	ug/l	50.0				
Benzene	"			ND	"	0.500				
Toluene	"			ND	"	0.500				
Ethylbenzene	"			ND	"	0.500				
Xylenes (total)	"			ND	"	0.500				
Methyl tert-butyl ether	"			ND	"	2.00				
Surrogate: a,a,a-Trifluorotoluene	"	300		302	"	65.0-135	101			
Surrogate: 4-Bromofluorobenzene	"	300		280	"	65.0-135	93.3			
LCS		9020249-BS1								
Gasoline	2/10/99	1000		1020	ug/l	65.0-135	102			
Surrogate: 4-Bromofluorobenzene	"	300		266	"	65.0-135	88.7			
Matrix Spike		9020249-MS1		P902081-02						
Gasoline	2/10/99	1000	153	944	ug/l	65.0-135	79.1			
Surrogate: 4-Bromofluorobenzene	"	300		287	"	65.0-135	95.7			





Blaine Tech/Chevron 1680 Rogers Ave. San Jose, CA 95112	Project: Chevron Project Number: 9-5607/990127-P1 Project Manager: Christine Lillie	Sampled: 1/27/99 Received: 1/29/99 Reported: 2/12/99
---	---	--

**Total Petroleum Hydrocarbons as Gasoline and BTEX by EPA 8015M/8020M/Quality Control
Sequoia Analytical - Petaluma**

Analyte	Date Analyzed	Spike Level	Sample Result	QC Result	Units	Reporting Limit Recov. Limits	Recov. %	RPD Limit	RPD %	Notes*
Matrix Spike Dup	9020249-MSD1	P902081-02								
Gasoline	2/10/99	1000	153	1040	ug/l	65.0-135	88.7	20.0	11.4	
Surrogate: 4-Bromofluorobenzene	"	300		276	"	65.0-135	92.0			





Blaine Tech/Chevron 1680 Rogers Ave. San Jose, CA 95112	Project: Chevron Project Number: 9-5607/990127-P1 Project Manager: Christine Lillie	Sampled: 1/27/99 Received: 1/29/99 Reported: 2/12/99
---	---	--

Notes and Definitions

#	Note
DET	Analyte DETECTED
ND	Analyte NOT DETECTED at or above the reporting limit
NR	Not Reported
dry	Sample results reported on a dry weight basis
Recov.	Recovery
RPD	Relative Percent Difference



**Field
Data
Sheets** —

WELL GAUGING DATA

Project # 990127-P1 Date 1-27-99 Client Chevron

Site 5269 Crow Canyon Road.

Well ID	Well Size (in.)	Sheen / Odor	Depth to Immiscible Liquid (ft.)	Thickness of Immiscible Liquid (ft.)	Volume of Immiscibles Removed (ml)	Depth to water (ft.)	Depth to well bottom (ft.)	Survey Point: TOB or TOC	
C-1	4					20.55	43.05		
C-2	4					15.85	44.65		
C-3	4					23.67	31.80		
C-5	4					23.98	32.10		
C-6	4					11.96	30.04		
C-7	2					8.55	26.35		
C-8	2					11.51	25.15		
C-9	4					11.54	—		Extraction System
C-10A	3					17.88	22.73		
C-10B	3					18.11	34.20		
C-11	3					19.45	33.64		
C-12	3					12.25	29.68		
C-13	3					11.26	28.35		
C-14	3					7.32	24.40		
C-15	3					10.62	19.72		
C-16	3					12.11	30.62		

CHEVRON WELL MONITORING DATA SHEET

Project #: <u>990127-PI</u>	Station #: <u>9-5607</u>
Sampler: <u>PAV1</u>	Date: <u>1-27-99</u>
Well I.D.: <u>C-3</u>	Well Diameter: 2 3 <u>(4)</u> 6 8
Total Well Depth: <u>31.80</u>	Depth to Water: <u>23.67</u>
Depth to Free Product:	Thickness of Free Product (feet):
Referenced to: <u>(PVC)</u> Grade	D.O. Meter (if req'd): YSI HACH

Well Diameter	Multiplier	Well Diameter	Multiplier
2"	0.16	5"	1.02
3"	0.37	6"	1.47
4"	0.65	Other	radius ² * 0.163

Purge Method: Bailer
 Disposable Bailer
~~Middleburg~~
~~Electric Submersible~~
 Extraction Pump
 Other: _____

Sampling Method: Bailer
(Disposable Bailer)
 Extraction Port
 Other: _____

<u>5</u>	x	<u>3</u>	=	<u>15</u>	Gals.
1 Case Volume (Gals.)		Specified Volumes		Calculated Volume	

Time	Temp (°F)	pH	Cond.	Gals. Removed	Observations
<u>12:42</u>	<u>65.4</u>	<u>6.7</u>	<u>1750</u>	<u>5</u>	
<u>12:43</u>	<u>68.2</u>	<u>6.7</u>	<u>1725</u>	<u>10</u>	
<u>12:44</u>	<u>64.6</u>	<u>6.6</u>	<u>1685</u>	<u>15</u>	

Did well dewater? Yes (No) Gallons actually evacuated: 15

Sampling Time: 12:50 Sampling Date: 1-27-99

Sample I.D.: C-3 Laboratory: (Sequoia) CORE N. Creek Assoc. Labs

Analyzed for: (TPH-G BTEX MTBE) TPH-D Other:

Duplicate I.D.: Analyzed for: TPH-G BTEX MTBE TPH-D Other:

D.O. (if req'd):	Pre-purge:	mg/L	Post-purge:	mg/L
O.R.P. (if req'd):	Pre-purge:	mV	Post-purge:	mV

CHEVRON WELL MONITORING DATA SHEET

Project #: 990127-PI	Station #: 9-5607
Sampler: PAUL	Date: 1-27-99
Well I.D.: C-5	Well Diameter: 2 3 <u>4</u> 6 8
Total Well Depth: 32.10	Depth to Water: 23.98
Depth to Free Product:	Thickness of Free Product (feet):
Referenced to: <u>PVC</u> Grade	D.O. Meter (if req'd): YSI HACH

Well Diameter	Multiplier	Well Diameter	Multiplier
2"	0.16	5"	1.02
3"	0.37	6"	1.47
4"	0.65	Other	radius ² * 0.163

Purge Method: Bailer
 Disposable Bailer
 Middleburg
Electric Submersible
 Extraction Pump

Other: _____

Sampling Method: Bailer
Disposable Bailer
 Extraction Port

Other: _____

<u>5</u>	x	<u>3</u>	=	<u>15</u>	Gals.
1 Case Volume (Gals.)		Specified Volumes		Calculated Volume	

Time	Temp (°F)	pH	Cond.	Gals. Removed	Observations
11:59	65.6	7.2	1275	5	
12:00	65.4	7.2	1175	10	
12:01	64.8	7.0	1000	15	

Did well dewater? Yes No Gallons actually evacuated: 15

Sampling Time: 12:06 Sampling Date: 1-27-99

Sample I.D.: C-5 Laboratory: Sequoia CORE N. Creek Assoc. Labs

Analyzed for: TPH-G BTEX MTBE TPH-D Other: _____

Duplicate I.D.: _____ Analyzed for: TPH-G BTEX MTBE TPH-D Other: _____

D.O. (if req'd):	Pre-purge:	mg/L	Post-purge:	mg/L
O.R.P. (if req'd):	Pre-purge:	mV	Post-purge:	mV

CHEVRON WELL MONITORING DATA SHEET

Project #: <u>990127-PI</u>	Station #: <u>9-5607</u>
Sampler: <u>PAUL</u>	Date: <u>1-27-99</u>
Well I.D.: <u>C-7</u>	Well Diameter: <u>(2)</u> 3 4 6 8
Total Well Depth: <u>26.35</u>	Depth to Water: <u>8.55</u>
Depth to Free Product:	Thickness of Free Product (feet):
Referenced to: <u>(PVC)</u> Grade	D.O. Meter (if req'd): YSI HACH

Well Diameter	Multiplier	Well Diameter	Multiplier
<u>2"</u>	0.16	5"	1.02
3"	0.37	6"	1.47
4"	0.65	Other	radius ² * 0.163

Purge Method: Bailer
Disposable Bailer
 Middleburg
 Electric Submersible
 Extraction Pump
 Other: _____

Sampling Method: Bailer
Disposable Bailer
 Extraction Port
 Other: _____

<u>2.5</u>	x	<u>3</u>	=	<u>7.5</u>	Gals.
1 Case Volume (Gals.)		Specified Volumes		Calculated Volume	

Time	Temp (°F)	pH	Cond.	Gals. Removed	Observations
<u>10:57</u>	<u>64.2</u>	<u>7.2</u>	<u>975</u>	<u>2.5</u>	
<u>11:01</u>	<u>63.8</u>	<u>7.2</u>	<u>900</u>	<u>5.0</u>	
<u>11:05</u>	<u>63.6</u>	<u>7.3</u>	<u>850</u>	<u>7.5</u>	

Did well dewater? Yes (No) Gallons actually evacuated: 7.5

Sampling Time: 11:10 Sampling Date: 1-27-99

Sample I.D.: C-7 Laboratory: (Sequoia) CORE N. Creek Assoc. Labs

Analyzed for: (TPH-G BTEX MTBE) TPH-D Other:

Duplicate I.D.: Analyzed for: TPH-G BTEX MTBE TPH-D Other:

D.O. (if req'd):	Pre-purge:	mg/L	Post-purge:	mg/L
O.R.P. (if req'd):	Pre-purge:	mV	Post-purge:	mV

CHEVRON WELL MONITORING DATA SHEET

Project #: <u>990127-P1</u>	Station #: <u>9-5607</u>
Sampler: <u>PAUL</u>	Date: <u>1-27-99</u>
Well I.D.: <u>C-8</u>	Well Diameter: <u>(2)</u> 3 4 6 8
Total Well Depth: <u>25.15</u>	Depth to Water: <u>11.51</u>
Depth to Free Product:	Thickness of Free Product (feet):
Referenced to: <u>(PVC)</u> Grade	D.O. Meter (if req'd): YSI HACH

Well Diameter	Multiplier	Well Diameter	Multiplier
<u>2</u> "	0.16	5"	1.02
3"	0.37	6"	1.47
4"	0.65	Other	radius ² * 0.163

Purge Method: Bailer
 Disposable Bailer
 Middleburg
 Electric Submersible
 Extraction Pump
 Other: _____

Sampling Method: Bailer
 Disposable Bailer
 Extraction Port
 Other: _____

<u>2.0</u>	x	<u>3</u>	=	<u>6.0</u>	Gals.
1 Case Volume (Gals.)		Specified Volumes		Calculated Volume	

Time	Temp (°F)	pH	Cond.	Gals. Removed	Observations
10:32	64.2	7.4	1000	2	
10:35	63.6	7.4	950	4	
10:38	63.4	7.6	875	6	

Did well dewater? Yes No Gallons actually evacuated: 6

Sampling Time: 10:42 Sampling Date: 1-27-99

Sample I.D.: C-8 Laboratory: (Sequoia) CORE N. Creek Assoc. Labs

Analyzed for: (TPH-G BTEX MTBE) TPH-D Other: _____

Duplicate I.D.: _____ Analyzed for: TPH-G BTEX MTBE TPH-D Other: _____

D.O. (if req'd):	Pre-purge:	mg/L	Post-purge:	mg/L
O.R.P. (if req'd):	Pre-purge:	mV	Post-purge:	mV

CHEVRON WELL MONITORING DATA SHEET

Project #: <u>990127-P1</u>	Station #: <u>9-5607</u>
Sampler: <u>PAUL</u>	Date: <u>1-27-99</u>
Well I.D.: <u>C-9</u>	Well Diameter: 2 3 <u>(4)</u> 6 8
Total Well Depth:	Depth to Water: <u>11.54</u>
Depth to Free Product:	Thickness of Free Product (feet):
Referenced to: <u>PVC</u> Grade	D.O. Meter (if req'd): YSI HACH

Well Diameter	Multiplier	Well Diameter	Multiplier
2"	0.16	5"	1.02
3"	0.37	6"	1.47
4"	0.65	Other	radius ² * 0.163

Purge Method: Bailer Disposable Bailer Middleburg Electric Submersible Extraction Pump

Other: _____

Sampling Method: Bailer Disposable Bailer Extraction Port

Other: _____

1 Case Volume (Gals.)	<u>Grabs</u> Specified Volumes	<u>Sample</u> Calculated Volume
-----------------------	--------------------------------	---------------------------------

Time	Temp (°F)	pH	Cond.	Gals. Removed	Observations
13:45	64.4	7.2	1000		
		* System not running unable to remove Pump			

Did well dewater? Yes No Gallons actually evacuated: _____

Sampling Time: 13:50 Sampling Date: 1-27-99

Sample I.D.: C-9 Laboratory: Sequoia CORE N. Creek Assoc. Labs

Analyzed for: TPH-G BTEX MTBE TPH-D Other: _____

Duplicate I.D.: _____ Analyzed for: TPH-G BTEX MTBE TPH-D Other: _____

D.O. (if req'd):	Pre-purge:	mg/L	Post-purge:	mg/L
O.R.P. (if req'd):	Pre-purge:	mV	Post-purge:	mV

CHEVRON WELL MONITORING DATA SHEET

Project #: 990127-P1	Station #: 9-5607
Sampler: PAUL	Date: 1-27-99
Well I.D.: C-10B	Well Diameter: 2 (3) 4 6 8
Total Well Depth: 34.20	Depth to Water: 18.11
Depth to Free Product:	Thickness of Free Product (feet):
Referenced to: PVC Grade	D.O. Meter (if req'd): YSI HACH

Well Diameter	Multiplier	Well Diameter	Multiplier
2"	0.16	5"	1.02
(3)	0.37	6"	1.47
4"	0.65	Other	radius ² * 0.163

Purge Method: Bailer Sampling Method: Bailer

Disposable Bailer ~~Disposable Bailer~~

Middleburg Extraction Port

~~Electric Submersible~~ Other: _____

Extraction Pump

Other: _____

6	X	3	=	18	Gals.
1 Case Volume (Gals.)		Specified Volumes		Calculated Volume	

Time	Temp (°F)	pH	Cond.	Gals. Removed	Observations
8:47	63.4	7.0	1000	6	
8:48	63.0	7.0	1050	12	
8:49	62.8	7.0	1075	18	

Did well dewater? Yes No Gallons actually evacuated: 18

Sampling Time: 8:55 Sampling Date: 1-27-99

Sample I.D.: C-10B Laboratory: Sequoia CORE N. Creek Assoc. Labs

Analyzed for: TPH-G BTEX MTBE TPH-D Other:

Duplicate I.D.: Analyzed for: TPH-G BTEX MTBE TPH-D Other:

D.O. (if req'd):	Pre-purge:	mg/L	Post-purge:	mg/L
O.R.P. (if req'd):	Pre-purge:	mV	Post-purge:	mV

CHEVRON WELL MONITORING DATA SHEET

Project #: 990127-P1	Station #: 9-5607
Sampler: PAUL	Date: 1-27-99
Well I.D.: C-11	Well Diameter: 2 (3) 4 6 8
Total Well Depth: 33.64	Depth to Water: 19.45
Depth to Free Product:	Thickness of Free Product (feet):
Referenced to: <u>PVC</u> Grade	D.O. Meter (if req'd): YSI HACH

Well Diameter	Multiplier	Well Diameter	Multiplier
2"	0.16	5"	1.02
<u>3"</u>	0.37	6"	1.47
4"	0.65	Other	radius ² * 0.163

Purge Method: Bailer
 Disposable Bailer
 Middleburg
Electric Submersible
 Extraction Pump
 Other: _____

Sampling Method: Bailer
~~Disposable Bailer~~
 Extraction Port
 Other: _____

<u>5.2</u>	x	<u>3</u>	=	<u>15.6</u>	Gals.
1 Case Volume (Gals.)		Specified Volumes		Calculated Volume	

Time	Temp (°F)	pH	Cond.	Gals. Removed	Observations
10:12	63.8	6.7	1500	5	
10:13	63.4	6.7	1475	10	
10:14	62.6	6.8	1450	15	

Did well dewater? Yes No Gallons actually evacuated: 15

Sampling Time: 10:20 Sampling Date: 1-27-99

Sample I.D.: C-11 Laboratory: Sequoia CORE N. Creek Assoc. Labs

Analyzed for: TPH-G BTEX MTBE TPH-D Other: _____

Duplicate I.D.: _____ Analyzed for: TPH-G BTEX MTBE TPH-D Other: _____

D.O. (if req'd):	Pre-purge:	mg/L	Post-purge:	mg/L
O.R.P. (if req'd):	Pre-purge:	mV	Post-purge:	mV

CHEVRON WELL MONITORING DATA SHEET

Project #: 990127-P1	Station #: 9-5607
Sampler: PAUL	Date: 1-27-99
Well I.D.: C-12	Well Diameter: 2 (3) 4 6 8
Total Well Depth: 29.68	Depth to Water: 12.25
Depth to Free Product:	Thickness of Free Product (feet):
Referenced to: PVC Grade	D.O. Meter (if req'd): YSI HACH

Well Diameter	Multiplier	Well Diameter	Multiplier
2"	0.16	5"	1.02
3"	0.37	6"	1.47
4"	0.65	Other	radius ² * 0.163

Purge Method: Bailer
 Disposable Bailer
 Middleburg
 Electric Submersible
 Extraction Pump
 Other: _____

Sampling Method: Bailer
 Disposable Bailer
 Extraction Port
 Other: _____

0.4	x	3	=	19.3	Gals.
1 Case Volume (Gals.)		Specified Volumes		Calculated Volume	

Time	Temp (°F)	pH	Cond.	Gals. Removed	Observations
13:06	66.2	7.0	1000	7	
13:07	65.6	7.0	1100	14	
13:08	64.8	6.9	1175	21	

Did well dewater? Yes No Gallons actually evacuated: 21

Sampling Time: 13:13 Sampling Date: 1-27-99

Sample I.D.: C-12 Laboratory: Sequoia CORE N. Creek Assoc. Labs

Analyzed for: TPH-G BTEX MTBE TPH-D Other:

Duplicate I.D.: Analyzed for: TPH-G BTEX MTBE TPH-D Other:

D.O. (if req'd): Pre-purge: mg/L Post-purge: mg/L

O.R.P. (if req'd): Pre-purge: mV Post-purge: mV

CHEVRON WELL MONITORING DATA SHEET

Project #: 990127-PI	Station #: 9-5607
Sampler: PAUL	Date: 1-27-99
Well I.D.: C-14	Well Diameter: 2 (3) 4 6 8
Total Well Depth: 24.40	Depth to Water: 7.32
Depth to Free Product:	Thickness of Free Product (feet):
Referenced to: PVC Grade	D.O. Meter (if req'd): YSI HACH

Well Diameter	Multiplier	Well Diameter	Multiplier
2"	0.16	5"	1.02
(3)	0.37	6"	1.47
4"	0.65	Other	radius ² * 0.163

Purge Method: Bailer
 Disposable Bailer
 Middleburg
Electric Submersible
 Extraction Pump
 Other: _____

Sampling Method: Bailer
Disposable Bailer
 Extraction Port
 Other: _____

6.3	x	3	=	18.9	Gals.
1 Case Volume (Gals.)		Specified Volumes		Calculated Volume	

Time	Temp (°F)	pH	Cond.	Gals. Removed	Observations
11:21	63.2	7.4	750	6	
11:22	62.8	7.2	700	12	
11:23	62.6	7.2	675	18	

Did well dewater? Yes No Gallons actually evacuated: 18

Sampling Time: 11:27 Sampling Date: 1-27-99

Sample I.D.: C-14 Laboratory: Sequoia CORE N. Creek Assoc. Labs

Analyzed for: TPH-G BTEX MTBE TPH-D Other: _____

Duplicate I.D.: Analyzed for: TPH-G BTEX MTBE TPH-D Other: _____

D.O. (if req'd):	Pre-purge:	mg/L	Post-purge:	mg/L
O.R.P. (if req'd):	Pre-purge:	mV	Post-purge:	mV

CHEVRON WELL MONITORING DATA SHEET

Project #: <u>990127-P1</u>	Station #: <u>9-5607</u>
Sampler: <u>PAUL</u>	Date: <u>1-27-99</u>
Well I.D.: <u>C-15</u>	Well Diameter: 2 <u>(3)</u> 4 6 8 <u> </u>
Total Well Depth: <u>19.72</u>	Depth to Water: <u>10.62</u>
Depth to Free Product:	Thickness of Free Product (feet):
Referenced to: <u>(PVC)</u> Grade	D.O. Meter (if req'd): YSI HACH

Well Diameter	Multiplier	Well Diameter	Multiplier
2"	0.16	5"	1.02
3"	0.37	6"	1.47
4"	0.65	Other	radius ² * 0.163

Purge Method: Bailer
(Disposable Bailer)
 Middleburg
 Electric Submersible
 Extraction Pump
 Other:

Sampling Method: Bailer
(Disposable Bailer)
 Extraction Port
 Other:

<u>3.0</u>	x	<u>3</u>	=	<u>9.0</u>	Gals.
1 Case Volume (Gals.)		Specified Volumes		Calculated Volume	

Time	Temp (°F)	pH	Cond.	Gals. Removed	Observations
9:22	62.4	7.2	1275	3	
9:26	62.0	7.2	1256	6	
9:30	61.8	7.0	1200	9	

Did well dewater? Yes No Gallons actually evacuated: 9

Sampling Time: 9:35 Sampling Date: 1-27-99

Sample I.D.: C-15 Laboratory: (Sequoia) CORE N. Creek Assoc. Labs

Analyzed for: (TPH-G BTEX MTBE) TPH-D Other:

Duplicate I.D.: Analyzed for: TPH-G BTEX MTBE TPH-D Other:

D.O. (if req'd):	Pre-purge:	mg/L	Post-purge:	mg/L
O.R.P. (if req'd):	Pre-purge:	mV	Post-purge:	mV

CHEVRON WELL MONITORING DATA SHEET

Project #: 990127-P1	Station #: 9-5607
Sampler: PAUL	Date: 1-27-99
Well I.D.: C-16	Well Diameter: 2 (3) 4 6 8
Total Well Depth: 30.62	Depth to Water: 12.11
Depth to Free Product:	Thickness of Free Product (feet):
Referenced to: PVC Grade	D.O. Meter (if req'd): YSI HACH

Well Diameter	Multiplier	Well Diameter	Multiplier
2"	0.16	5"	1.02
3"	0.37	6"	1.47
4"	0.65	Other	radius ² * 0.163

Purge Method: Bailer Sampling Method: Bailer
 Disposable Bailer Disposable Bailer
 Middleburg Extraction Port
 Electric Submersible Other: _____
 Extraction Pump

7	x	3	=	21	Gals.
1 Case Volume (Gals.)		Specified Volumes		Calculated Volume	

Time	Temp (°F)	pH	Cond.	Gals. Removed	Observations
9:37	69.8	7.0	1100	7	
9:48	64.4	7.0	1200	14	
9:59	63.8	6.9	1275	21	

Did well dewater? Yes No Gallons actually evacuated: 21

Sampling Time: 9:55 Sampling Date: 1-27-99

Sample I.D.: C-16 Laboratory: Sequoia CORE N. Creek Assoc. Labs

Analyzed for: TPH-G BTEX MTBE TPH-D Other:

Duplicate I.D.: Analyzed for: TPH-G BTEX MTBE TPH-D Other:

D.O. (if req'd):	Pre-purge:	mg/L	Post-purge:	mg/L
O.R.P. (if req'd):	Pre-purge:	mV	Post-purge:	mV